


3-1984

## Landmark Report (Vol. 4, no. 9)

Kentucky Library Research Collections  
Western Kentucky University, [spcol@wku.edu](mailto:spcol@wku.edu)

Follow this and additional works at: [http://digitalcommons.wku.edu/landmark\\_report](http://digitalcommons.wku.edu/landmark_report)

 Part of the [Cultural Resource Management and Policy Analysis Commons](#), [Historic Preservation and Conservation Commons](#), and the [Public History Commons](#)

---

### Recommended Citation

Kentucky Library Research Collections, "Landmark Report (Vol. 4, no. 9)" (1984). *Landmark Report*. Paper 42.  
[http://digitalcommons.wku.edu/landmark\\_report/42](http://digitalcommons.wku.edu/landmark_report/42)

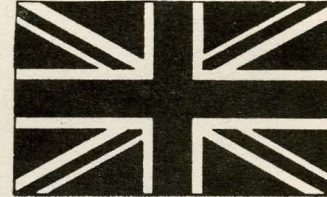
This Newsletter is brought to you for free and open access by TopSCHOLAR®. It has been accepted for inclusion in Landmark Report by an authorized administrator of TopSCHOLAR®. For more information, please contact [topscholar@wku.edu](mailto:topscholar@wku.edu).

# LANDMARK REPORT

Vol. 4 No. 9 of **Bowling Green & Warren County** MAR. 1984

## LANDMARK ANNUAL MEETING \_\_\_\_\_

Make your plans to attend Landmark's Annual Meeting on Wednesday, May 2, 1984 at 7:30 p.m. at the Decorators' Show House, 1253 State Street. Annual Meeting Chairman, Carol Burford, is planning a special viewing of the Show House and a wine and cheese reception. Election of officers and board members for the coming year will be held in addition to presentation of 1984 Landmark and Heritage Awards. Reservations for the Annual Meeting are \$5.00 per person. Invitations to Landmark members and guests will be mailed next month.



## British Architectural Heritage Tour

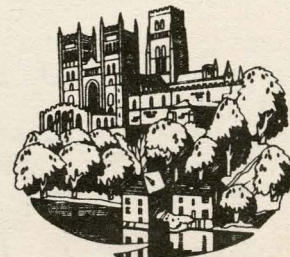
Plans are continuing for the British Architectural Heritage Tour to be conducted June 8-24, 1984. Total cost of the tour per person is \$1,750 double and \$1,850 single. Twelve participants from Bowling Green, Hopkinsville, Louisville and Lexington are currently registered. Please remember that the April 20th deadline for registration is quickly approaching. Anyone interested in participating should contact the Landmark Association at 781-8106. A special tour preview will be presented at the March membership meeting at 7:30 p.m. on Wednesday, March 28th at the Bowling Green Public Library.

## LANDMARK MARCH MEETING \_\_\_\_\_

Landmark's March general membership meeting will be held at the Bowling Green Public Library on Wednesday, March 28, 1984 at 7:30 p.m.

Those attending this meeting will be given a preview of Landmark's British Architectural Heritage Tour. Dr. Norman Hunter will present a slide program highlighting the major stops included during the tour. Anyone interested in participating in the British Architectural Heritage Tour should be sure to attend.

Following the presentation, a tour will be conducted through the Walter Gaines House, 1220 State Street. Designed by Henry McGoodwin for Walter Gaines in 1895, this residence is currently owned by Dr. Stan Cooke.







WILLIAM VOLTAIRE LOVING HOUSE  
1253 STATE STREET CA. 1840

### Decorators' Show House 1984

Decorators' Show House, co-sponsored by Landmark and the Arts Alliance, will feature approximately fourteen local and out-of-town interior and landscape designers who will display their talents at the William Voltaire Loving House, 1253 State Street. This event, scheduled to begin April 29th and lasting through May 13th, will open with an afternoon "Preview Tea" on April 29th from 3:00 p.m. to 5:00 p.m. at the Show House. Tickets for the tea will be available at \$10.00 per person. A "Preview Party" will be hosted by Mr. O.V. Clark on April 29th from 7:00 p.m. to 9:00 p.m. at the John B. Clark House, 1234 State Street. Tickets for the party will be available at \$25.00 per person. Tickets for each event will include unlimited visits through the Show House.

Decorators' Show House 1984 will be open to the public from April 29 through May 13, 1984 during the following hours:

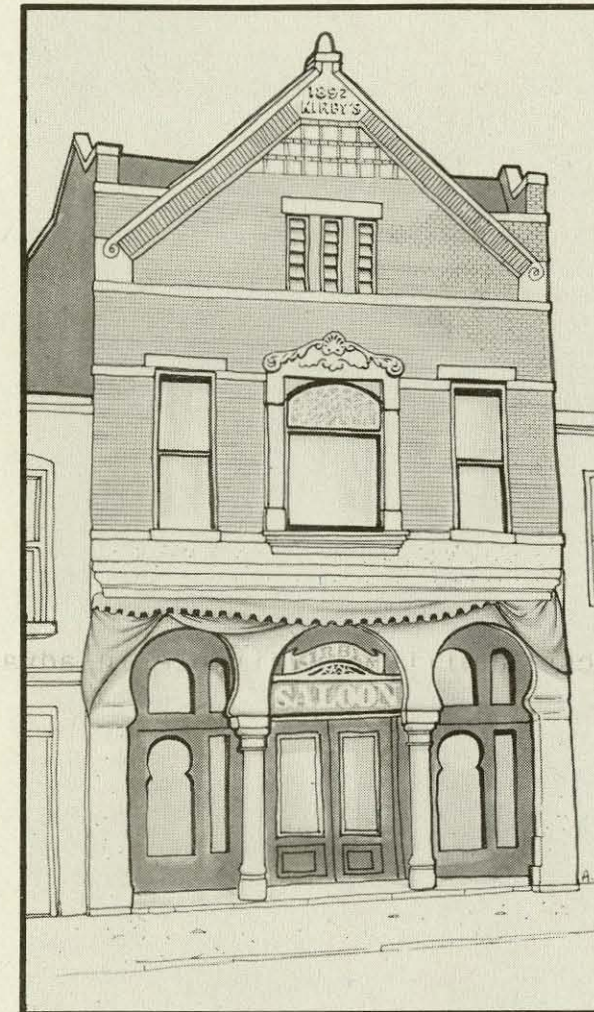
Monday - Saturday	10AM-4PM
Sunday	1PM-5PM
Tuesday and Thursday	7PM-9PM
Other times by appointment.	

Tickets will be available in advance for \$4.00, \$5.00 at the door and \$3.00 for students. For further information, contact Regina Newell at (502) 781-3880. Proceeds from this event will be used to support the on-going programs for the Landmark Association and Arts Alliance.

### Show House Boutique

A boutique at the Decorators' Show House will be offering items for sale to the general public. Anyone wanting to donate appropriate items for the boutique is encouraged to bring their donation to the Show House on April 4th or 5th from 10:00 a.m. to 1:00 p.m. Appropriate items for donation include jewelry, paintings, candlesticks and candelabra, vases, figurines, antique glassware and china, and suitable craft items. Donors will be provided a receipt verifying the donation for tax purposes. For further information, contact the Capitol Arts Center office at 782-2787.

## ARCHITECTURE OF WARREN COUNTY, KENTUCKY 1790-1940



During 1978, the Kentucky Heritage Council surveyed Warren County as part of a ten year program to identify the state's buildings, structures, sites and objects that represent our cultural heritage. In Warren County, 420 sites were studied representing a broad range of material culture indicative of common trends in the area. As a result of that survey, several buildings and districts were placed on the National Register of Historic Places.

Landmark has compiled and edited information pertaining to the county survey for presentation to the general public. Since establishment of the Landmark Association, this organization has attempted to create an awareness and appreciation of the county's cultural resources. *Architecture of Warren County, Kentucky 1790-1940* is a continuation of that endeavor, designed to provide an architectural overview of these resources. Our rich cultural heritage includes not only residential buildings, but commercial and ecclesiastical structures, public buildings, locks and dams, bridges, fortifications and archaeological sites as well. This catalog serves to illustrate 244 resources recorded, ranging from the common forms typical of the area, to the rare or unusual. Hopefully, this publication will

create a greater awareness and appreciation of the county's resources and encourage further documentation of those resources yet to be identified and studied.

In addition to historical and architectural overviews of Warren County, this 350 page catalog has several sections highlighting Oakland, Smiths Grove and the Smiths Grove Historic District, Woodburn, the Brinton B. Davis Thematic Resource, Upper East Main Street Historic District, Downtown Commercial Historic District, St. Joseph's Historic District, and College Hill Historic District. Illustrated with over 250 photographs, this guide also contains several special features including a full list of surveyed properties not pictured, a select bibliography of architectural and local history materials, an architect index, contractor index, style index, building form index, and a fold-out copy of the 1877 D.G. Beers and Company Map of Warren County.

Available in May, *Architecture of Warren County, Kentucky 1790-1940* will have a cover price of \$10.00. As a benefit of membership, Landmark members will be able to purchase this catalog at \$7.50, a 25% discount off the full cover price. These catalogs will be available at the Landmark office or they may be purchased through the mail for an additional \$1.30 for postage. For further information, contact the Landmark office, P.O. Box 1812, Bowling Green, Kentucky 42101, (502) 781-8106.



## DOWNTOWN REVITALIZATION

## JOSEPHINE CALVERT DIARY



COOKE BUILDING

433 PARK ROW

CA. 1885

Mr. Alan Baker has begun rehabilitation of the Cooke Building, 433 Park Row. Constructed circa 1885, this two story, seven bay commercial row building was the location of Sheppard's China Hall and the Southern Progress, a weekly newspaper and printing shop. Since 1901, the property has had a long history of housing dry goods, shoe and clothing shops. Altered during the 1950's, the building's facade was covered with concrete panels.

Currently, the structure is divided into two ownerships. Mr. Baker plans to revitalize his half to its original appearance. Rehabilitation will involve removal of the concrete panels to expose the upper facade and window openings, construction of a new first floor storefront and replacement of cornice, windows and limestone sills on the second floor. Reuse of the building will include Frozen Row Photograph Studio-Gallery on the second floor and retail lease on the first floor.

The Diary of Josephine Calvert, the day-by-day recollections of a young lady who grew up Victorian, in Bowling Green during the 1870's and 1880's, has been published in a fully annotated and illustrated edition by the Kentucky Museum.

Published with over 50 photographs and essays on Victorian life, the 60-page diary is the centerpiece of research and interpretation for the museum's major exhibit, "Growing Up Victorian: A Kentucky Childhood." Nine pages of full color photographs in the diary depict scenes from the exhibit. The volume sells for \$8.00 at the Museum Store.

Begun in November, 1878, when Josephine was 14 years old, and continued until 1881, when she was 16, the diary "is a microcosm of late 19th century life in Bowling Green and Warren County," according to an introductory essay by Deborah Smith, museum registrar and curator of the "Growing Up Victorian" exhibit.

"At the time it was written, perhaps, only another adolescent girl could have cared about Josie's burnt biscuits, her excursions up town, or her opinions about the new baby," the essay declares, "One hundred years later, these little events are no longer common or obvious, and the descriptions of 344 days in the life of a child in the child's own words, become a rare research find."

The Kentucky Museum is located on the campus of Western Kentucky University. Hours are 9:30 to 4:00 Tuesday through Saturday, and 1:00 to 4:30p.m. on Sunday. Admission is free and parking is available adjacent to the building off Kentucky Street.

For more information, call (502) 745-2592.

---

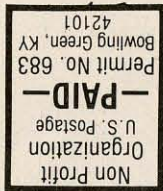
**PLEASE NOTE: THERE WILL  
BE NO APRIL LANDMARK  
MEETING**

---



Western Kentucky University  
Bowling Green, Ky. 42101

MAR 22 1984



LANDMARK ASSOCIATION  
914 1/2 State Street P.O. Box 1812  
Bowling Green, Kentucky 42101  
502/781-8106



## Calendar of Events

- Mar. 28: LANDMARK MONTHLY MEETING  
7:30 PM BG Public Library
- Apr. 6-8: Oriental Rug Show and Sale  
Houchens Center for Women  
1115 Adams Street
- Apr. 18: LANDMARK BOARD MEETING  
7:30 PM Landmark office

- Apr. 29-May 13: DECORATORS' SHOW HOUSE  
(William Voltaire Loving House)  
1253 State Street  
Mon.-Sat. 10AM-4PM  
Sunday 1PM-5PM  
Tues. & Thurs. 7PM-9PM
- May 2: LANDMARK ANNUAL MEETING  
Decorators' Show House  
(William Voltaire Loving House)  
1253 State Street  
7:30 PM
- May 19: Bowling Green Garden Club  
Open House

**LANDMARK REPORT** is a publication of the Landmark Association of Bowling Green and Warren County, Inc., a non-profit corporation organized to promote historic preservation/economic development. Landmark, a participating agency in the Kentucky Main Street Program, is supported by the membership of concerned citizens.

John Parker  
President

Richard M. Pfefferkorn  
Executive Vice President

Kevin A. Hunter  
Staff Assistant

### Board of Directors

Tom Babik  
David Faxon  
David Garvin  
Alma Hall  
Riley Handy  
Romanza Johnson  
Jack Kesler  
Richard Kirby  
Bob Marko  
Gary Murphy

John Parker  
Jim Parrish  
Charles Ray  
Janet Schwarzkopf  
Jay Sloan  
Herb Smith, Jr.  
Sandra Smith  
Rick Voakes  
Richard Wiesemann