

10-1-1925

Opening of the Louisville and Nashville Passenger Station

Kentucky Library Research Collections
Western Kentucky University, spcol@wku.edu

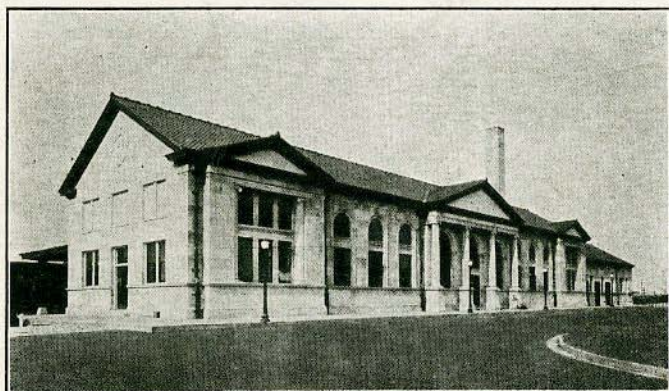
Follow this and additional works at: http://digitalcommons.wku.edu/dlsc_kl_non_mat

Recommended Citation

Kentucky Library Research Collections, "Opening of the Louisville and Nashville Passenger Station" (1925). *Kentucky Library Research Collections*. Paper 41.
http://digitalcommons.wku.edu/dlsc_kl_non_mat/41

This Other is brought to you for free and open access by TopSCHOLAR®. It has been accepted for inclusion in Kentucky Library Research Collections by an authorized administrator of TopSCHOLAR®. For more information, please contact topscholar@wku.edu.

OPENING
OF THE NEW
LOUISVILLE AND NASHVILLE
PASSENGER STATION
BOWLING GREEN, KY.



RESTAURANT SERVICE
OPERATED BY THE
CRESCENT NEWS AND HOTEL CO.
OCTOBER 1, 1925

HISTORICAL



November 1st, 1859, the first train of the Louisville and Nashville Railroad passed through Bowling Green enroute from Louisville to Nashville. Few indeed are there who remember that notable event; the tiny, wood-burning engines, small cars, running at a terrific speed of 10 to 15 miles per hour—the building designated as a depot in keeping with the equipment. Bowling Green was young then, only a village with perhaps a few hundred people. But Bowling Green has grown since—in fact, you might almost say she has grown up. Modern brick and stone buildings have taken the place of the small cabins of more than half a century ago; beautiful streets, paved with asphalt, produced in its own state, have replaced the dirt roads of the '50's. Automobiles and trucks have taken over the burden of the horse and mule.

As Bowling Green has grown and prospered, so has the "Old Reliable" grown and prospered and the equipment and facilities of today are as much in contrast to that of 70 years ago, as is the City of Bowling Green of today as compared with the Bowling Green of '59. Year by year, increasing its facilities and equipment to meet the demands of transportation, the L. & N. has kept abreast of the times. The Pan-American, one of the finest trains in the country, passing through Bowling Green daily on its journeys North and South, bears eloquent testimony to its progress.

The latest local achievement of the "Old Reliable" is the beautiful new passenger station. Long has Bowling Green desired a new station, patiently has she waited, and well has patience and vigil been rewarded. Her fondest dream has come true—her "castle in the air" has materialized. Of Ionic treatment architecture, built of the stone bearing the city's name, and taken from a quarry just on its outskirts. The platform and roads paved with asphalt, also produced locally, designed to meet every need of the traveler, the magnificent new structure is indeed something of which the city may well be proud.

One of the interesting features of the new station is the splendid new dining room of the Crescent News & Hotel Company. Beautiful new linens, silver, china, fixtures and equipment in harmony with the surroundings have been installed. The dining room at Bowling Green has long been famous for the excellency of its meals and it is today prepared to serve its patrons, if possible, even better than in the past.

It is our wish that Bowling Green may enjoy to the fullest its new station and that it will closer cement the bonds of friendship which have long existed between the Louisville and Nashville Railroad and the City of Bowling Green.

SPECIAL DINNER

SERVED FROM 11:00 A. M. TO 9:00 P. M.

\$1.00 PER PLATE

Celery

Radishes

••

Fruit Cocktail

••

Cream of Celery Soup

••

Smothered Young Milk Fed Chicken

••

Whipped Potatoes

New String Beans

••

Corn Sticks

Hot Biscuits

••

Head Lettuce, Thousand Island Dressing

••

Neapolitan Ice Cream

Cake

••

Tea

Coffee

Milk

KL SpheMem C-1113

1986.9.267

Gift of Elizabeth Coombe

