

10-5-1929

UA19/17/4 Football Program - WKU vs Ball Statee

WKU Athletics

Follow this and additional works at: http://digitalcommons.wku.edu/dlsc_ua_records

Recommended Citation

WKU Athletics, "UA19/17/4 Football Program - WKU vs Ball Statee" (1929). *WKU Archives Records*. Paper 596.
http://digitalcommons.wku.edu/dlsc_ua_records/596

This Other is brought to you for free and open access by TopSCHOLAR®. It has been accepted for inclusion in WKU Archives Records by an authorized administrator of TopSCHOLAR®. For more information, please contact topscholar@wku.edu.

A Good Place To Eat

Helm Hotel Coffee Shoppe

Lunch - 50c Dinner - 75c

FOR REAL SERVICE

GO TO
LONGSTAFF'S

SODAS :- CANDIES :- DRUGS

LONGSTAFF'S DRUG STORE

446 MAIN STREET

PHONE 180

Western Lunch Room

B. TICHENOR, Prop.

Headquarters for Everybody Plate Lunch 30c

Short Orders Sandwiches

Soda Fountain, Drinks and Ice Cream

1505 Center Street

Phone 1581

DRY CLEANING AND PRESSING

REPAIRING :- ALTERING

"WELL PRESSED IS WELL DRESSED"

STUDENTS' PRESSING CLUB

A. L. MILLER, PROP.

1409 CENTER ST.

BOWLING GREEN, KY.

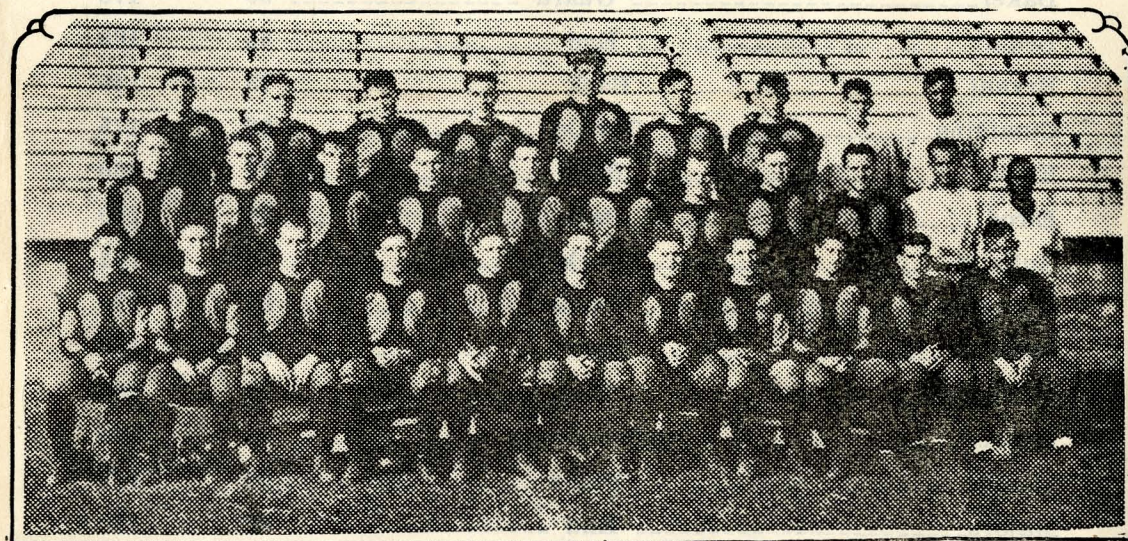
[1929]

PROGRAM

Ball Teachers College

VS.

Western Teachers College



VARSAITY 1929

CHAMPIONS

WESTERN STADIUM

Saturday, October 5--2:30 P. M.

D419

LINE UP

WESTERN

Name	Position	No. Jersey	Weight
Baldwin	Guard	87	170
Briggs	End	91	160
Bradshaw	Tackle	95	175
Baker	Guard	99	178
Beam	End	85	160
Bryant	Back	73	145
Cummins	Tackle	90	175
Elrod	Back	71	160
Elrod	Back	88	160
Gullette	Back	75	162
Hamilton	Center	94	170
Jameson	Guard	92	160
McNamara	End	74	160
Moore	Quarterback	68	148
Martin	Center	96	182
Majors	End	86	150
Oakley	Quarterback	67	165
Oliver	Back	66	155
Pendergrass	Tackle	89	175
Reynolds	End	79	160
Stansbury	End	78	170
Stevens	Tackle	77	170
Vaughn	Back	72	165

BALL

Name	Position	Weight
Toler	Left End	175
Derck	Left Tackle	220
Wiggins	Left Guard	200
Leakey	Center	195
Shivly	Right Guard	198
Farris	Right Tackle	188
C. Johnson	Right End	178
Lindzy	Quarter	168
Young	Left Half	176
Liggett (captain)	Fullback	190
Brady	Right Half	170

Reserves

Name	Weight	Name	Weight
Roetkin	150	E. Johnson	155
Jeffrey	180	Eurdick	175
Fravel	165	Hodge	150
Butler	155	Mitchell	150
Earl	180	Smith	160
Teal	200		

OFFICIALS

Doak, Pittsburgh, referee; Taylor, Georgetown, umpire; Hovater, Alabama, rear linesman; Bo Brown, Tennessee, field judge.

NEXT GAME—OCTOBER 26, BETHEL vs. WESTERN

Home Coming Game—Center, November 2

Read Ads on Next Page