

10-4-1947

UA19/17/4 Football Program - WKU vs Arkansas State

WKU Athletics

Follow this and additional works at: http://digitalcommons.wku.edu/dlsc_ua_records

Recommended Citation

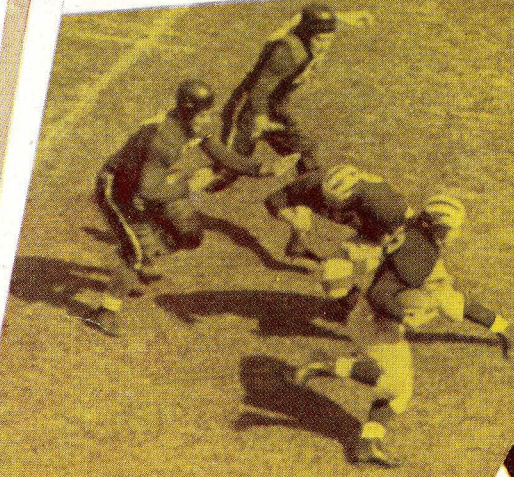
WKU Athletics, "UA19/17/4 Football Program - WKU vs Arkansas State" (1947). *WKU Archives Records*. Paper 645.
http://digitalcommons.wku.edu/dlsc_ua_records/645

This Other is brought to you for free and open access by TopSCHOLAR®. It has been accepted for inclusion in WKU Archives Records by an authorized administrator of TopSCHOLAR®. For more information, please contact topscholar@wku.edu.

OPENING HOME GAME OF 1947

BOWLING
GREEN
KENTUCKY

WESTERN
STADIUM



SATURDAY NIGHT

OCTOBER 4, 1947

LON KELLER

WESTERN vs.
ARKANSAS STATE

THE THINKING FELLOW CALLS A YELLOW CAB

Prompt and Courteous Service

YELLOW CAB CO.

Phone 1000

More And More Students Are Finding

NORMAN'S

A Good Place To Shop

Helm Hotel Coffee Shop

Bowling Green's Smart Eating Place

Everything For The Athlete

Warren County Hardware Company

Phone 328

934 State Street

BEST WISHES TO THE... *Hilltoppers*

From the

"Kentucky's Best Football Team"

BOWLING GREEN LAUNDRY COMPANY

Phone 700

"Kentucky's Best Cleaners"

929 Center

DRINK

Coca-Cola

TRADE-MARK REG. U. S. PAT. OFF.

All games have their tense moments — So does every-day work. Take time out for a bottle of ice-cold Coca-Cola. Its energy-giving refreshment sends you back to work or play feeling fit.

Bowling Green Coca-Cola Bottling Co.

Western's Coaching Staff Of 1947



JACK CLAYTON

JESSE THOMAS

FRANK GRIFFIN

Western Football Coach Jesse Thomas got out his bridge pad and pencil last week and enlisted the aid of bayou drawling Jack Clayton (left) and boxer Frank Griffin to arrive at a formula for trumping Arkansas State College when the Hilltoppers tangle with the Indians tonight in the Western Stadium. Clayton, a Louisianian, is the line coach, while Griffin, former Western wingman, tutors the ends.



NUMBER, PLEASE! — '47 RULE CHANGES LIBERALIZE SUBSTITUTION

BY CAL SMALL

THE FOOTBALL RULES committee of the National Collegiate Athletic Association is all for giving the weary footballer a break. Time was when Joe Ruggedrock, Class '03, could cavort through a full game of bruising football. Maybe modern pig-skin-toters are not of the same strenuous stuff as the tireless titans of the past, perhaps the tempo of the game has picked up, but the fact remains there are very few sixty-minute men left today. The tendency is for major schools to have two almost equally balanced teams splitting up the action, with a dozen or so more hulking lads ready to stem the breach if need be.

In tune with the times, the football rules committee has gradually been recognizing this revolution in football technique. Colleges last fall were able to substitute without limit while time was out, and the public was treated to the spectacle of whole teams exchanging places at critical junctures. Some schools had an "offensive" and a "defensive" eleven. Algernon Fancypants could treat the crowd to some stylish dippy-doodle on offense and then sit it out when the opposition took over.

Now the rule-makers of the N.C.A.A. have gone even the unlimited substitution rule one better. They are taking the unprecedented step of allowing a college team to substitute one player while time is in. The ball must be dead (i.e.—no scrimmage going on), but a team does not have to use up valuable time-outs in making necessary or strategic substitutions. So this fall the football fan will go in for plenty of program flipping as grid mentors try to out push-button each other.

Also continuing the trend of recent years, the rules committee gave the offense another shot in the a.m. For years fans and players alike were irritated by the cramping confines of plays close to the sidelines. Finally an inbounds line was moved in fifteen yards and there was less tight-rope running down the narrow corridor between inbounds and offside lines. Still, coaches specializing in bold, sweeping plays, long-distance passes, or quick-striking T-tactics, campaigned for more of the wide, open spaces. This year the committee ruled to move the inbounds line from fifteen yards in to a line one-third the width of the field (17.8 yards). As a

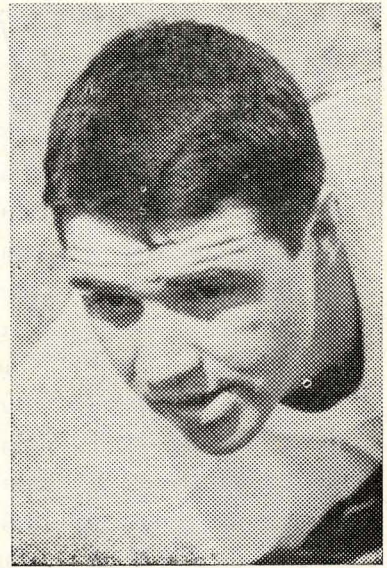
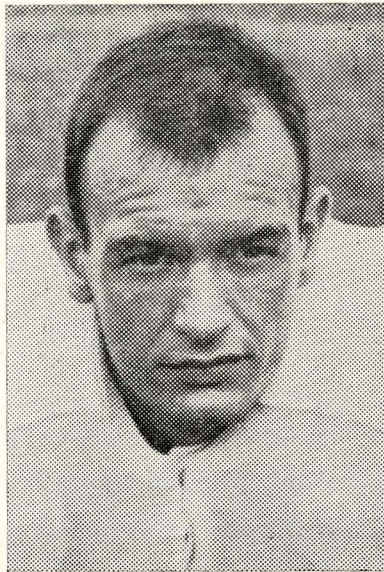
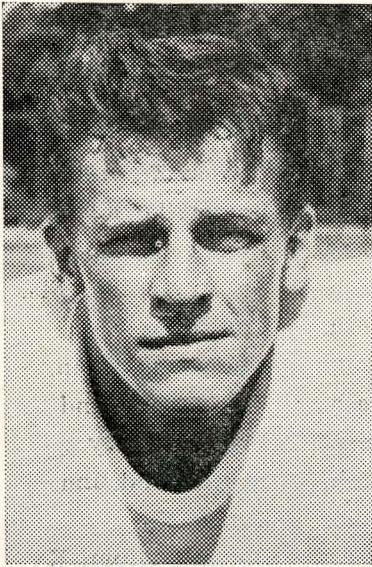
result, spectators this year can look for more wide-sweeping maneuvers on the "short side."

In line with its constant attempt to prevent certain abuses as well as improve the quality of the game the committee decided that a shift play which simulates a regular play will be ruled a false start. This involves two or more players and refers to either a fake pass, fake run or feint in the charge. "Cutie tactics" of the sort had been used to draw opposing players into a premature charge and a resulting off-side penalty. Now a planned fake of this sort will bounce back on the attacking team in the form of a penalty if too much time is consumed in getting a legitimate play started.

In its never-ending fight to cut down on the number of injuries sustained on the football field, the rules committee ruled that if a kick is attempted on a try for point after touchdown and the kick is blocked or deflected the ball becomes dead. This will prevent the mad scrambling around after a "loose" ball on such kicks. Along this line, the committee rewrote the rules with respect to illegal use of the hands in an effort to tighten up on their enforcement and prevent injuries.

The last two rulings of the N.C.A.A. group referred to penalties. It was decided that on disqualification fouls, although the player would still be removed from the game, the penalty would be changed from half the distance to the goal line to fifteen yards. A ruling was passed also that after a ball has been kicked across the scrimmage line and before it has been touched by any player, penalties on all fouls except unnecessary roughness and illegal use of the hands will be inflicted at the point of the foul.

The committee made two other important decisions. One was to provide a general recodification of the football rules, which have grown like Topsy, and are a hodgepodge of inconsistencies. The other was to recommend a specific system for unity in the numbering of players. What with substitutions galore, the fan will need a precision instrument to keep players straight. The committee urged that ends be numbered in the eighties, tackles in the seventies, guards in the sixties, centers in the fifties, backs in the tens, twenties, thirties and forties. Number please!

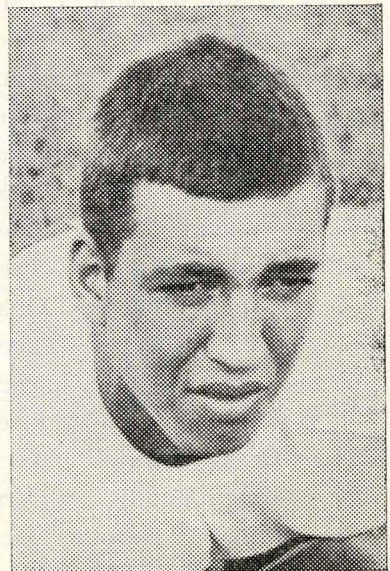
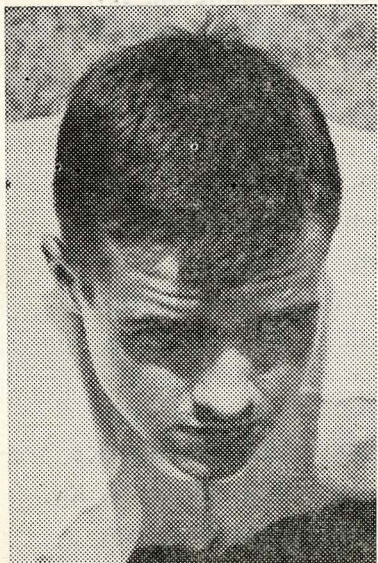


HILLTOPPERS

Top row, left to right: James Pickens, Pat McNeil, Louis Snider.

Center row, left to right: Nick Diachenko, Lewis Bean.

Bottom row, left to right: Lawrence Gilbert, Kenneth Arnold, Frank Wallheiser.

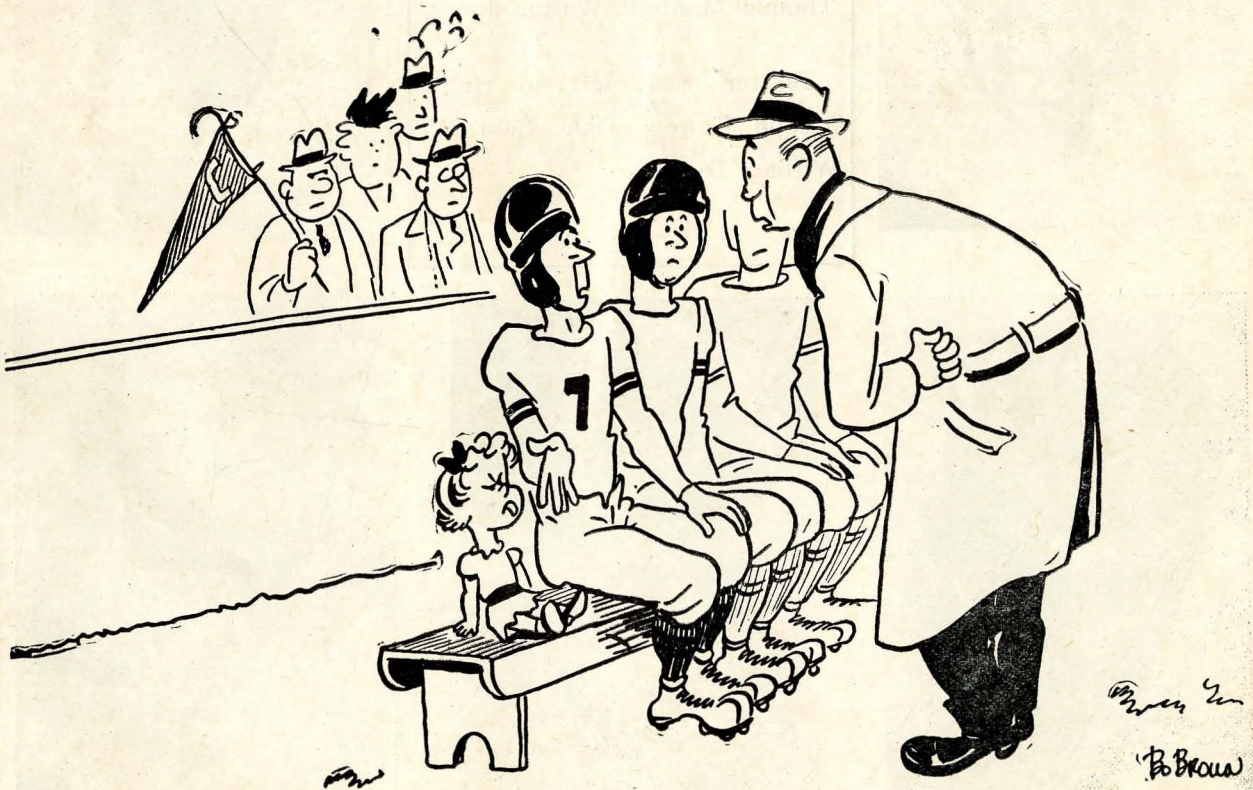


Western's Roster

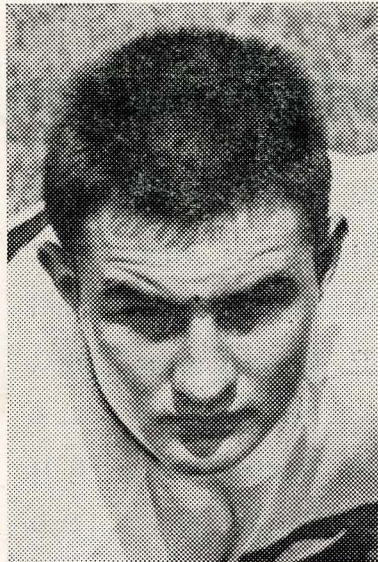
No.	Name	Pos.	Height	Age	Wt.	Class	Home Address
20	Diecken, John	Back	5'10 "	21	170	Fresh.	Evansville, Ind.
23	Klier, Kenneth	Back	6'	22	174	Fresh.	Louisville, Ky.
24	Taylor, Hal	Back	5'10½"	20	175	Fresh.	Louisville, Ky.
25	Lanier, John	Center	6' 2½"	24	185	Fresh.	St. Augustine, Fla.
27	Hile, Gilbert	Guard	5'10½"	20	180	Fresh.	Louisville, Ky.
28	Fowlkes, Danny	End	6' 2 "	19	175	Soph.	Dyersburg, Tenn.
29	Treber, Andrew	Back	5'11 "	18	175	Fresh.	South Bend, Ind.
30	Pickens, James	Back	6' 1½"	20	180	Fresh.	Princeton, Ky.
31	Glod, Gene	Back	5'10 "	19	185	Fresh.	South Bend, Ind.
33	Mills, Ray	Back	5'11 "	24	170	Senior	Lynch, Ky.
34	Talley, Joseph	Guard	5'11½"	17	195	Fresh.	Bowling Green, Ky.
36	Robinson, Arnold	Guard	5'10 "	21	185	Soph.	Louisville, Ky.
37	Haynes, James	Guard	5' 9 "	24	178	Senior	Pensacola, Fla.
38	Lanham, Clifton	End	6'	26	170	Fresh.	Louisville, Ky.
39	Underwood, S.	Back	5'10 "	23	175	Soph.	Lexington, Ky.
40	Jones, Walton	Back	5' 8½"	20	165	Soph.	Louisville, Ky.
41	Gilbert, Lawrence	Guard	5'11 "	17	190	Fresh.	Bowling Green, Ky.
42	Diachenko, Nick	Center	6'	22	191	Soph.	Gary, W. Va.
43	Hina, Roy	Guard	5'11 "	18	182	Fresh.	Sturgis, Ky.
44	McNeil, Pat	Back	6'	20	173	Soph.	Louisville, Ky.
45	McChes'y, James	End	6' 2 "	18	184	Fresh.	Marion, Ky.
46	Threet, Hoyte	Tackle	6' 2 "	20	198	Fresh.	Shelbyville, Tenn.
47	Blanton, Owen	Guard	5' 9 "	18	190	Fresh.	Shelbyville, Tenn.
48	Browning, Jewel	End	6' 1 "	24	198	Soph.	Madisonville, Ky.
49	Clayton, Fred	Back	6' 1 "	22	186	Soph.	Madisonville, Ky.
50	Lach, Edward	Back	5' 9 "	18	180	Fresh.	South Bend, Ind.
51	Montelli, Thos.	End	6' 2 "	23	194	Soph.	Gary, W. Va.
52	Summers, Thos.	End	6' 1½"	25	195	Junior	Columbia, Tenn.
53	Dunn, William	Tackle	6'	20	188	Fresh.	Lexington, Ky.
54	Cowan, James	End	6' 2 "	18	195	Fresh.	Morganfield, Ky.
56	Lloyd, Jerry	Tackle	6' 2 "	18	195	Fresh.	Louisville, Ky.
57	Wallheiser, Frank	End	6' 5 "	19	195	Soph.	Shelbyville, Tenn.
58	Snider, Louis	Guard	5' 9½"	18	188	Soph.	Louisville, Ky.
59	Schrenk, Dale	Back	5'10½"	20	195	Soph.	Seymour, Ind.
60	Hancken, John	Back	5' 8½"	17	190	Fresh.	Birmingham, Ala.
61	Arnold, Kenneth	Tackle	6'	22	198	Soph.	Fairdale, Ky.
63	Green, Albert	Guard	5'10½"	19	198	Fresh.	Louisville, Ky.
64	Wells, Robert	Tackle	6'	18	205	Fresh.	St. Augustine, Fla.
65	Shireman, Wm.	Tackle	6' ½"	18	217	Fresh.	Louisville, Ky.
66	McCullum, Larry	Back	5' 8 "	22	200	Soph.	Princeton, Ky.
67	Bean, Lewis	Tackle	6'	23	224	Soph.	Madisonville, Ky.
68	Keys, Buddy	Center	6' 3 "	23	198	Senior	Tompkinsville, Ky.
69	Murphy, Harold	Back	5'11 "	22	204	Soph.	Lancaster, Ky.

Arkansas State Roster

20 Shaw, Joe	Q.	33 Ackerman, Cecil	5. E.	47 Wilhelm, Benny	L. T.
21 Phelps, Dick	L. H.	34 Landers, Billy	L. H.	48 Foster, George	C.
22 Dickey, John	C.	35 Bennett, Charles	L. G.	49 Ruyle, A. D.	C.
23 Hinson, Jimmy	L. H.	37 Reavy, George	R. G.	50 Blue, Robert	L. G.
24 Luketich, Don	Q.	38 Perry, Bill	L. E.	51 Bolton, Everette	L. E.
25 Shearburn, V. V.	R. H.	39 Austin, Pelham	R. H.	52 Drury, Bill	R. T.
26 Johnson, S. T.	R. E.	40 Gerring, Russ	F. B.	53 Cashen, LeRoy	L. G.
27 Doane, Keith	R. E.	41 Corcoran, Edward	R. E.	54 Hudson, Dale	R. T.
28 Powers, Howard	F. B.	42 Dillon, Charles	C.	55 Smith, Schuyler	L. G.
29 Patterson, Gerald	L. T.	43 Clark, Bill	R. T.	56 Larche, Harry	R. G.
30 Rotton, Clifford	R. H.	44 Hayden, Lewis	L. H.	57 McGuire, John	L. H.
31 Cobb, John	L. G.	45 Jeffress, Maurice	R. H.	58 Holland, Jimmy	R. G.
31 Alshouse, Lewis	F. B.	46 Manns, Robert	L. T.	59 Watson, Bill	R. T.



"My wife had to go out and we couldn't get a 'sitter'!"

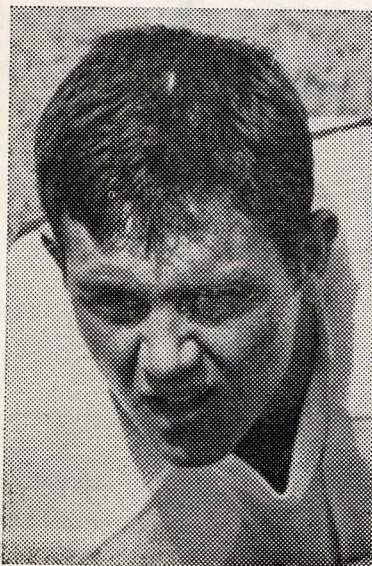
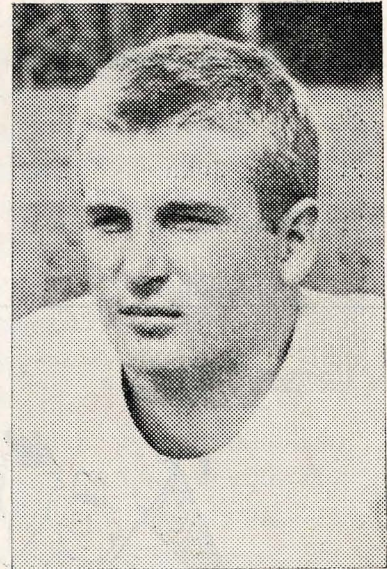


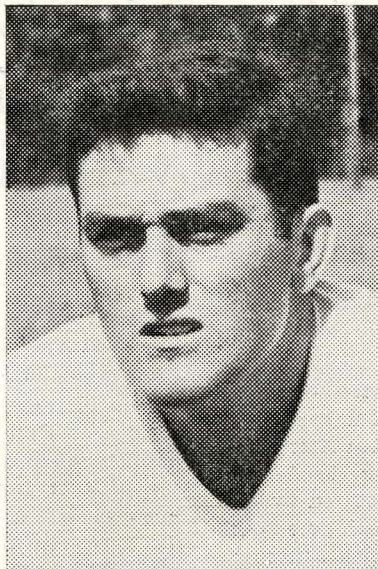
HILLTOPPERS

Top row, left to right: Shirley Underwood, Roy Hina, Jerry Lloyd.

Center row, left to right: Thomas Montelli, Walton Jones.

Bottom row, left to right: Joseph Talley, Dale Schrenk, William Dunn.



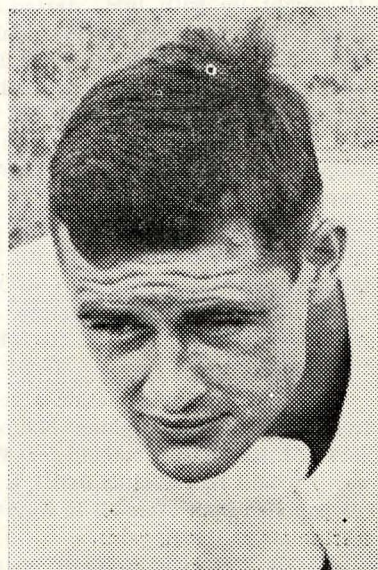
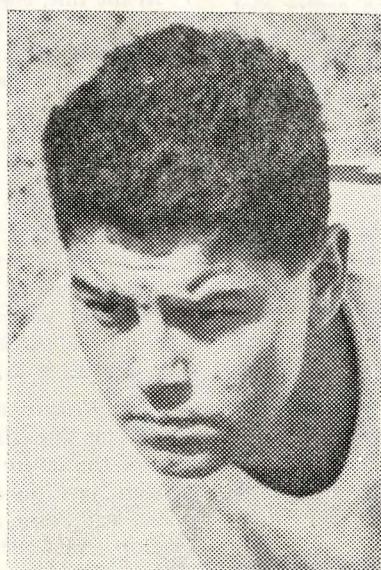
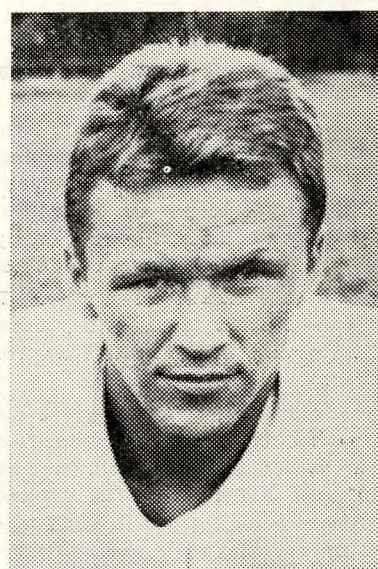


HILLTOPPERS

Top row, left to right: Clifton Lanham, Harold Murphy, James Haynes.

Center row, left to right: Fred Clayton, John Diecken.

Bottom row, left to right: Danny Fowlkes, Thomas Summers, Jewel Browning.



Hilltoppers Turn In Outstanding Performance In Opening Game Against Evansville

Western's Hilltoppers played their first football game of the 1947 season last week when they tangled with the Evansville College Purple Aces. All pre-game dope had the Toppers beaten by at least two touchdowns. The Aces were supposed to be loaded this season, making a bid for the bigtime.

Coach Jesse Thomas's squad of freshmen and sophomore performers didn't know about Evansville's plans though and held the highly touted Aces to 0-0 tie. From the opening gun they fought the Aces all over the field and came within an "Ace" on two occasions of shoving over a touchdown. Each time Coach Don Ping's charges came within scoring range the threat was halted cold by a line which refused to let an inch be gained and by a fast moving secondary which pulled down passes to set up scoring threats of their own.

In that hard fighting line Coach Thomas started Clifton Lanham, a 170-pound, six foot lad from Louisville, at the left end. Jewell Browning a 198-pound, six foot one incher from Madisonville held the right end. It was Browning who caught one of Jim Pickens' long passes to put the Hilltoppers on the Evansville seven-yard line. Here a penalty for un-necessary roughness threw Western back and halted the threat.

At the tackles Lewis "Red" Bean, a burley 224-pounder from Madisonville, and Kenneth Arnold, a 198 pounds of dynamite from Fairdale, Ky., got the call.

Louis Snider, weighing 188 pounds, standing five feet ten inches tall and hailing from Louisville, started at the left guard position. Over at right tackle James Haynes, a Pensacola, Fla., 178-pounder standing five feet nine inches, was in there when the opening gun sounded. Haynes is also a senior.

Buddy Keys, one of the three seniors on the squad and a wearer of the Red and Grey before World War II caught up with him, started at the center slot. Buddy tips the scales at 198 pounds and stands six feet three inches tall. He hails from Tompkinsville. Against the Aces he was a power both on offense and defense. The long, lanky boy, who was at one time an end, hauled down an Evansville pass to start the Hilltoppers on a surge down the field which was finally stopped just short of the goal.

The Western starting backfield was not named until just prior to the Evansville tilt. Coach Thomas had at least eight men who were as hot as a two-dollar pistol in the scrimmage sessions. Against the Purple Aces they were equally as hot when the coach sent them in.

The first four to see action were Ray Mills, a senior from Lynch, Ky., weighing 170 pounds, at quarterback. Mills played football for Western before the war. At right half Walton Jones, a five foot nine inch, 165 pounder from Male Hi in Louisville, opened up by tearing off nice long gains.

At left half Dale Schrenk, a 195 pound, five foot

eleven inch lad from Seymour, Ind., matched his running mate, Jones.

Fred Clayton, a 186 pounds of human TNT, standing six foot one inch and hailing from Madisonville, time and time again exploded through the Ace line from his fullback post.

Jim Pickens came in the game after the first few minutes to start tossing passes from the quarterback position. Although a freshman, the six foot two inch 180 pounder from Princeton demonstrated that he knew what to do once in action as he ran and passed like a veteran. He halted Evansville's most dangerous threat midway the second quarter when he intercepted a pass labeled "touchdown" on the Western goal and carried the ball back to his own 32 yard line.

Pat McNeil came in at the halfback spot and flashed some beautiful running to add to Evansville's worries as they saw their opportunities for a victory grow dimmer and dimmer. McNeil is a returnee from the 1946 squad. He hails from Louisville, weighs 173 pounds and stands an even six feet.

Edward Lach, a 180-pound five foot nine-inch lad from South Bend, Ind., relieved Jones and made Coach Thomas' heart glow with his performance although handicapped by an injured shoulder suffered in practice.

In the kicking department Harold Murphy, a 204 pound lad standing five feet, nine inches tall from Lancaster, Ky., proved that Coach Thomas knew what he was doing when he made a booting specialist of the big boy. The only plays Murphy saw action in were the ones when the Hilltoppers had to kick. Seven times he came through, each time with long booming kicks which kept the Aces back in their own territory. Once he put the Aces back to their own one-foot line with a long high 50-yard boot.

In the line, Joe Talley, a 195-pound six foot Bowling Green boy, saw plenty of service at tackle. Hoyte Threet, a 198-pound six foot two-incher from Shelbyville, Tenn also played a lot of tackle.

Danny Fowlkes, a 175-pound six foot two-inch boy from Dyersburg, Tenn. and Frank Wallheiser, a long six foot five incher weighing 198 pounds from Shelbyville, Tenn., took ample care of the ends when Browning and Lanham were out.

Western's reserve power was proven Friday night as Albert Green, Roy Hina, Nick Diachenko, James McChesney, William Shireman, William Dunn and Gilbert Hile played heads-up inspired football when they went in to assist in the Western line.

The Western-Evansville game started the 1947 season for the Hilltoppers in great style. The fine play of the entire team proved to everyone that the Toppers have come a long way since football was resumed last season following the war. Coaches Thomas, Clayton and Griffin and all the Hilltopper squad of '47 "are on the way."

If You Can't Travel With The Hilltoppers
Tune In

W L B J

MEMBER

MUTUAL BROADCASTING SYSTEM

SOON—WBON—WLBJ's New FM Station

Bettersworth Motor Company

CADILLAC - OLDS - GMC TRUCKS

Sales & Service

Phone 1556 and 1274

1036 State St.

Compliments of

American National Bank

Safe And Friendly

Since 1886

Compliments

of

PARK CITY HOTEL

We're Behind You Hilltoppers

BROWN ICE CREAM AND MILK COMPANY

- GRADE "A" PASTEURIZED MILK •
- ICE CREAM • AND BUTTER •

Burton & Burton
QUALITY CLEANERS

Joe McFarland, Owner

Complete Laundry & Dry Cleaning Service

1122 Center Street



Phone 520

FELDMANS

"The Store For Thrifty Women"

431 Park Row

Phone 13



A B

VOTED TOPS in the COLLEGES from COAST to COAST

Always Buy CHESTER



CHESTERFIELD

Probable WESTERN Lineup

FB Clayton 49						
LHB McNeil or Jones 44 40						RHB Schrenk 59
QB Mills or Pickens 33 30						
LE Browning 48						RE Lanham or Fowlkes 38 28
LT Arnold 61	LG Snider 58	C Keys 68	RG Haynes 37	RT Bean 67		
SQUAD LIST						
20 Diecken, b	40 Jones, b	54 Cowan, e				
23 Klier, b	41 Gilbert, g	56 Lloyd, t				
24 Taylor, b	42 Diachenko, c	57 Wallheiser, e				
25 Lanier, c	43 Hina, g	58 Snider, g				
27 Hile, g	44 McNeil, b	59 Schrenk, b				
28 Fowlkes, e	45 McChesney, e	60 Hancken b				
29 Treber, b	46 Threet, t	61 Arnold, t				
30 Pickens, b	47 Blanton, g	63 Green, g				
31 Glod, b	48 Browning, e	64 Wells, t				
33 Mills, b	49 Clayton, b	65 Shireman, t				
34 Talley, g	50 Lach, b	66 McCullum, b				
36 Robinson, g	51 Montelli, e	67 Bean, t				
37 Haynes, g	52 Summers, e	68 Keys, c				
38 Lanham, e	53 Dunn, t	69 Murphy, b				
39 Underwood, b						
OFFICIALS Hickman Duncan, Referee John Uhlian, Umpire						

SCORE	1	2	3	4	TOTAL
WESTERN	7	0	0	0	14
ARKANSAS	7	7	0	0	14

Probable ARKANSAS STATE Lineup

FB Powers 28						
LHB Hayden 44						RHB Rotton 30
QB Luketich 24						
LE Bolton 51	LT Wilhelm 47	LG Smith 55	C Dickey 22	RG Larche 56	RT Hudson 54	RE Doane 27
SQUAD LIST						
20 Shaw, b	33 Ackerman, e	47 Wilhelm, t				
21 Phelps, b	34 Landers, b	48 Foster, c				
22 Dickey, c	35 Bennett, g	49 Ruyle, c				
23 Hinson, b	37 Reavy, g	50 Blue, g				
24 Luketich, b	38 Perry, e	51 Bolton, e				
25 Shearburn, b	39 Austin, b	52 Drury, t				
26 Johnson, e	40 Gerring, b	53 Cashen, g				
27 Doane, e	41 Corcoran, e	54 Hudson, t				
28 Powers, b	42 Dillon, c	55 Smith, g				
29 Patterson, t	43 Clark, t	56 Larche, g				
30 Rotton, b	44 Hayden, b	57 McGuire, b				
31 Cobb, g	45 Jeffress, b	58 Holland, g				
32 Alshouse, b	46 Manns, t	59 Watson, t				
OFFICIALS Pete Gracey, Linesman Webb Porter, Field Judge						

A ALWAYS MILDER
B BETTER TASTING
C COOLER SMOKING

*The sum-total
of smoking
pleasure*

AS USUAL OLD FRIENDS
WILL MEET AT THE
UNIVERSITY INN
Steaks And Freezer Fresh Ice Cream
Are Our Specialties

Compliments of
Citizens National Bank
Bowling Green, Kentucky

Compliments of
BOWLING GREEN
Concrete Products Co.

Phone 2220 16th St. and R. R.

Make The
MANSARD HOTEL

Your Home

In

Bowling Green

Geo. Williamson, Jr., Mgr.

Specializing In Chronic Diseases
Dr. Foy McCormack
Chiropractic Clinic
943 State Street
Bowling Green, Ky.

Dollar Bros. Shoe Co.
FINE SHOES
Fitted By X-Ray
Bowling Green, Ky. Phone 486

NationalStores
INCORPORATED

Compliments
of
VANS CAFE

Good Food 829 State St.

Bowling Green Bank & Trust Co.
Bowling Green, Ky.

*"A Growing Bank & Trust Co.
In A Growing Community"*

Introducing Arkansas State College And It's Athletic Program

Arkansas State College of which W. J. Edens former member of the Western faculty is president is located at State College, Arkansas just one mile outside the city of Jonesboro. Situated on the foothills of Crowley's Ridge, Arkansas State serves the greatest agricultural area in Arkansas and one of the greatest in the country.

Originally founded as an agricultural school in 1909, when the State Legislature, created four such schools in the state, the college has grown in size and scope to its present level. The college now has an enrollment of nearly 1300 students, and offers the A.B., B.S., and the B.S.E. degrees.

The steady growth of Arkansas State College has necessitated a constantly expanding program. In 1925, by an act of the State Legislature, the name of the institution was changed to the State Agriculture and Mechanical College. By the same act, authority was given the Board of Trustees and the faculty to extend the curricula, offer senior college work, and grant the baccalaureate degree. In 1933, by another act of the Legislature, the name of the college was again changed, this time to Arkansas State College. In the same year it was admitted to the North Central Association of Colleges and Secondary Schools.

State has a faculty of approximately 80 members and is the only institution, of higher learning, in the state that has a modern training school building where a program of work is conducted from the kindergarten through high school.

Athletically speaking, Arkansas State College participates in four intercollegiate sports, football, basketball, baseball and track. After an athletic lull during the war years, the institution has again entered intercollegiate competition with a greatly expanded program.

Last year the Indians played a ten game football schedule during which they won four, lost three and tied three. Victories were over Illinois Wesleyan, Arkansas State Teachers, Southern Illinois University, and Centre College. The three ties were against Monti-

cello A & M, Henderson State, and Evansville College. The Indians lost to Southeast Missouri, Bradley Tech, and Xavier.

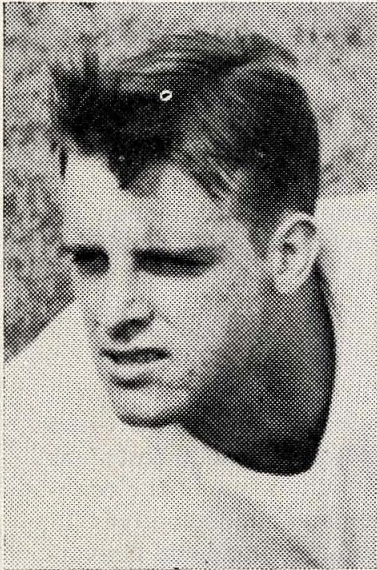
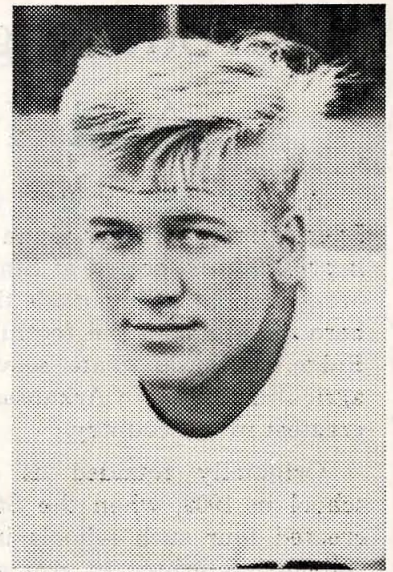
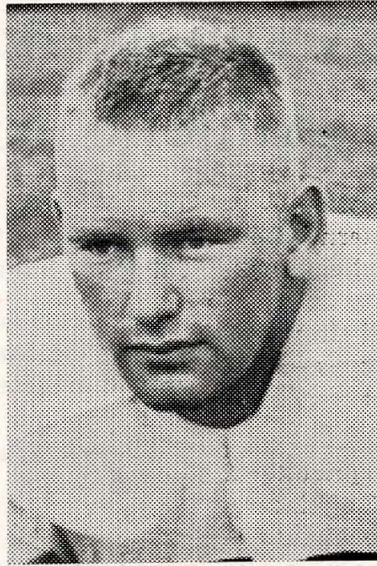
In basketball, State is the present champion of the State of Arkansas. The Indians won the State Inter-Collegiate Tournament last year and played in the National Inter-Collegiate Tournament, held at Kansas City, losing in the first round to Beloit College 75-60.

In the other two sports, in which the college takes part, baseball and track, the Indians played losing schedules. The baseball team came close to an even break with an 8 and 7 record. In four meets, the track team failed to come through with a single team victory.

The 1947 Football practice got under way on Sept. 1 with approximately 75 men reporting to Coach Forrest W. England and his assistant John Rauth. Since then, the squad has been trimmed until it now consists of 60 men.

The Indians feature a "T" formation with variations that Coach England seems to be able to concoct almost at will. "Frosty" as Coach England is known, is one of the country's leading exponents of the deceptive "T" being a disciple of Ray Elliot of the University of Illinois. England graduated from Illinois College in 1935 during the days that Elliot coached there. He coached for several years in Illinois schools, and at University City, Missouri. He came to Arkansas State College a little more than a year ago, and in that time has brought the Tribe to the fore as a football power in this area.

Coach John Rauth is a graduate of McKendree College, where he lettered in football, basketball, and track for four years. He played one year of professional football with the St. Louis Gunners and then went into the coaching game. He came to State College late this summer from Harrisburg, Illinois. His great experience as a college and professional lineman is giving Coach England an immeasurable amount of assistance in the developing of a strong line.

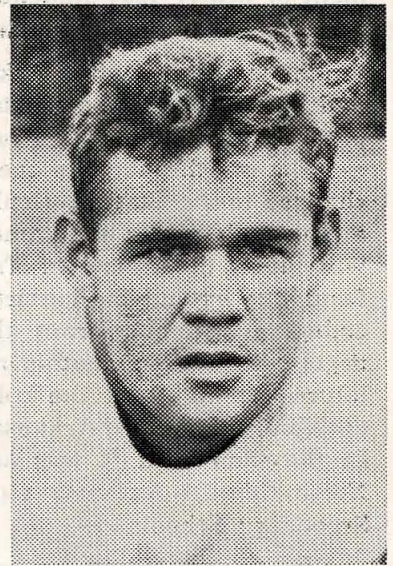


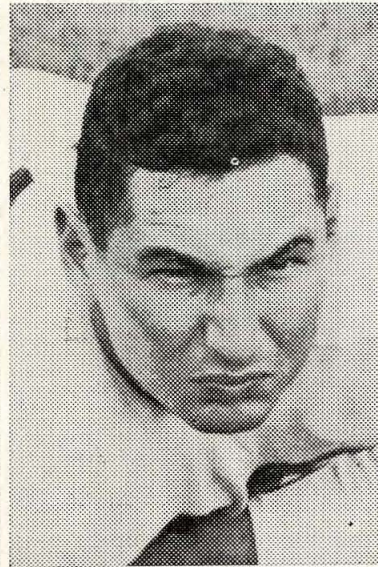
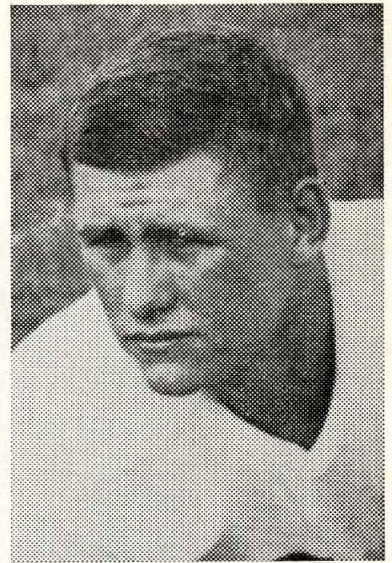
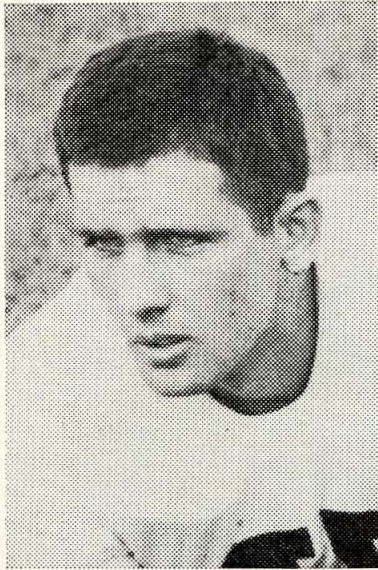
HILLTOPPERS

Top row, left to right: Andrew Treber, John Hancken, Kenneth Klier.

Center row, left to right: Albert Green, Hal Taylor.

Bottom row, left to right: Edward Lach, Larry McCullum, Owen Blanton.



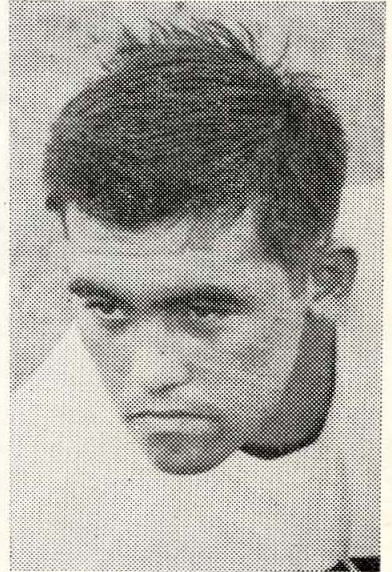


HILLTOPPERS

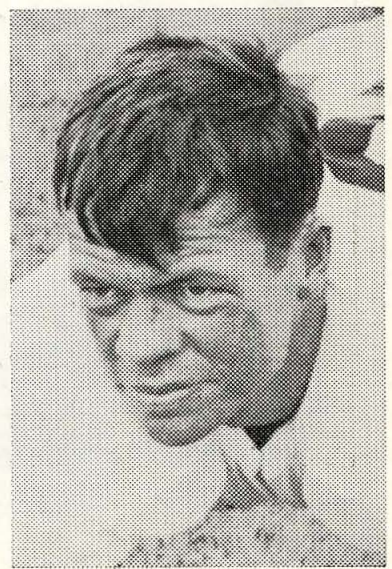
Top row, left to right: James McChesney, Robert Wells, James Cowan.

Center row, left to right: Arnold Robinson, William Shireman.

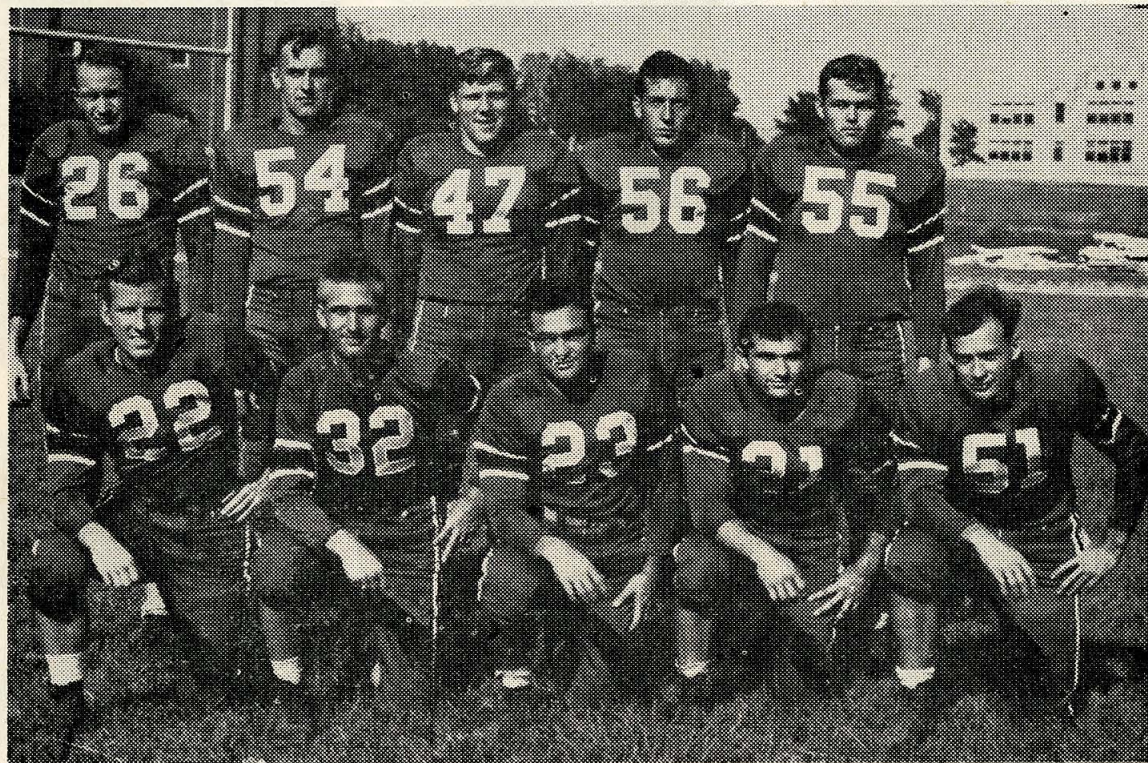
Bottom row, left to right: Hoyte Threet, John Lanier.



W



Arkansas State Veteran Linemen



Pictured above are ten veteran linemen of Arkansas State College. All ten of these men made letters for the Indians during 1946 and are expecting to carry the brunt of the line work for Arkansas State this season. They are, front row, left to right: Dickey, Wilkerson, Melio, Phelps, and Bolton.

Back row, left to right; Johnson, Hudson, Wilhelm, Larche, and Smith.



Dr. W. J. Edens

At left is Dr. W. J. Edens, president of Arkansas State College. President Edens, who accompanied Arkansas State to Bowling Green and who is present at tonight's game with Western's president, Dr. Paul L. Garrett, was a member of the Western faculty for many years.

Arkansas State Lettermen Backs



The half dozen football stalwarts at the top of the page are veteran backfield men of Arkansas State and will all be seen in action in tonight's game. They are, left to right: Landers, Hayden, Jeffers, Rotton, Powers, and Shearburn.

At right is Coach Forrest "Frosty" England. This is Coach England's second year with the Indians. He graduated from Illinois College in 1935. Assisting him is John Rauth, a graduate of McHenry College.



Coach "Frosty" England

BOWL 'EM OVER HILLTOPPERS

HOWARD *Jewelers*

"Where You Get It On Credit"

Compliments of

Biggs Furniture Co.

310 Main St.

Phone 160

AFTER THE GAMES MEET AT

ARCHWAY INN

We Cater To Private Parties—

Banquets — Dances

527 State St.

Phone 968-W

"First In Fine Photography"

Franklin's Studio

CHES. JOHNSON, OWNER

Phone 212

930½ State

Compliments of

American Hardware Co.

1023 State St.

PENALTIES

1. Taking more than four times out during either half.
2. Illegal delay of game.
3. Failure of substitute to report to an official.
4. Violation of kickoff formation.
12. Team not ready to play at scheduled time.
13. Violation of rules during intermission.
14. Illegal return of suspended or disqualified player.
15. Failure to stop at least one second on shift play.
24. Striking, kneeling, or kicking opponent — half the distance to the goal and disqualification of offending player.
25. Foul within one yard line — half the distance to the goal.
26. Interference by defensive team on forward pass—first down for passing team at spot of foul.

LOSS OF FIVE YARDS

5. Illegal return or withdrawal of eligible players.
6. Failure to maintain proper alignment of offensive team before ball is snapped. Also, backfield man illegally in motion.

LOSS OF FIFTEEN YARDS

16. Intentional grounding of forward pass.
17. Interference by member of passing team with defensive player on an interception. (Also loss of a down.)
18. Illegal use of hands and arms by offensive player.

OTHER PENALTIES

27. Illegal forward pass — five yards from spot of pass, also loss of down.
28. Flagrant roughing of kicker — disqualification, plus fifteen yards.
29. Flagrant unsportsmanlike conduct — disqualification, plus fifteen yards.

7. Offside by either team, or encroachment on neutral zone.
8. Attempt to draw opponents off-side.
9. Flying block or flying tackle.
10. Illegal use of hands and arms by defensive player.
11. Crawling by runner.
19. Defensive player striking opponent above shoulders.
20. Roughing the kicker.
21. Piling up, hurdling, clipping.
22. Tackling player out of bounds.
23. Coaching from the sidelines.
30. Forward pass becoming incomplete beyond the line of scrimmage by touching or being touched by an ineligible player—loss of fifteen yards from spot of preceding down, play to count as down.
31. Illegal touching of kicked ball inside opponent's 10 yard line—touchback.

1. OFF-SIDE
Penalty - 5 yards.

2. ILLEGAL POSITION OR PROCEDURE
Penalty - 5 yards from where ball was put in play.

3. ILLEGAL MOTION OR SHIFT
Penalty - 5 yards.
If from shift or huddle - 15 yards.

4. ILLEGAL DELAY OR EXTRA TIME OUT
Penalty - 5 yards.

5. UNNECESSARY ROUGHNESS
Penalty - 15 yards.
Military salute also used for clipping, followed by striking the back of the knee with hand. Penalty - 15 yards.
Signal also used for disqualification fouls and for running into or roughing the kicker. In the latter case, the military salute is followed by swinging the leg as though punting.

6. UNSPORTSMANLIKE CONDUCT
Penalty - 15 yards. For flagrant unsportsmanlike conduct - 15 yard penalty and disqualification.

7. ILLEGAL USE OF HANDS OR ARMS
Penalty, by offense 15 yards; by defense - 5 yards.

8. INTENTIONAL GROUNDING
Penalty - loss of down and 15 yard penalty from spot of preceding down.

9. ILLEGALLY PASSING OR HANDING BALL FORWARD
Penalty - 5 yards.

10. FORWARD PASS OR FAIR CATCH INTERFERENCE
If penalty on offense - 15 yards and loss of down interference by defense, ball to offense on spot of foul as first down.

11. BALL ILLEGALLY TOUCHED, KICKED OR BATTED

12. INCOMPLETE FORWARD PASS; PENALTY DECLINED; NO PLAY OR NO SCORE

13. CRAWLING; HELPING THE RUNNER OR INTERLOCKED INTERFERENCE
Penalty for helping ball-carrier - 15 yards, otherwise 5 yards.

14. BALL DEAD

15. TOUCHDOWN OR FIELD GOAL

16. SAFETY

17. TIME OUT

18. FIRST DOWN

19. START THE CLOCK OR NO MORE TIME-OUTS ALLOWED

Big 7 Furniture Stores

"Quality Furniture For Less Money"

Bowling Green, Kentucky

It's HERMAN LOWE & CO.

In Bowling Green For

Wilson Sports Equipment
Moore's Paint—Photo Supplies
Everything For Sports
Corner State and Tenth Sts.

Next Time Try Shell! !

Mobley Oil Co.

Distributors of

Shell Gasoline, Oils and Fuel Oils

Louisville Pike

Phone 424

Best Wishes HILLTOPPERS

For A Successful Season

From The

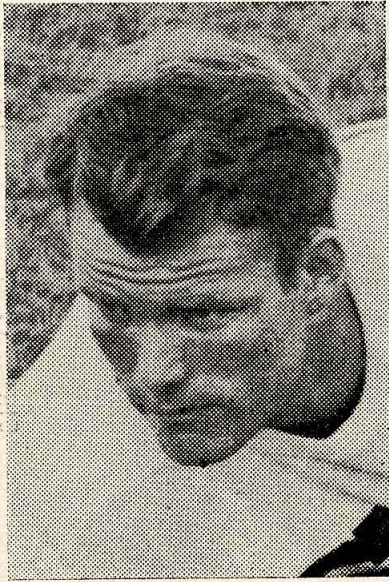
Derby

Underwear Co.

And Its Employees



The members of Western's 1947 football squad are termed long on determination and spirit but short in experience. Twenty-five of the group are freshmen and 20 are sophomores. The squad members are (left to right, front row): Tom Summers, Pat McNeil, Tom Battle, John Lanier, Albert Green, Lewis Bean, Hal Taylor, Bill Shireman, Kenneth Arnold, Dale Schrenk, Hoyt Threet, and Owen Blanton; (second row): Roy Hina, Kenneth Klier, John Diecken, John Hancken, Ed Lach, R. L. Wilson, Louis Snider, Cecil Greenwell, Shirley Underwood, Ray Mills, Walton Jones, Bill Dunn, Andy Treber, Jim Haynes; (third row): Head Coach Jesse Thomas, Line Coach Jack Clayton, End Coach Frank Griffin, Bobo Davenport, Butch Gilbert, Tom Montelli, Frank Wallheiser, Jerry Lloyd, Jim McChesney, Danny Fowikes, Buddy Keys, Student Managers Dan Ward, Clyde Smith, and Tommy Gray; (back row): Bob Wells, Jim Cowan, Clifton Lanham, Larry McCullum, Harold Murphy, Jim Pickens, Fred Clayton, Arnold Robinson, Joe Talley, Nick Diachenko, and Jewel Browning.



BUDDY KEYS

At the left is Buddy Keys and on the right is Ray Mills. Both are seniors and are the only two members of the Hilltopper squad who played for Western before the war.



RAY MILLS

1947 FOOTBALL SCHEDULE

Date	Opponent	Where Played
*Sept. 26	—Evansville CollegeEvansville, Ind.
*Oct. 4	—Arkansas StateHome
*Oct. 11	—Tennessee Polytechnic Home
Oct. 18	—Bradley (Homecoming)Home
*Oct. 24	—LouisvilleLouisville, Ky
Nov. 1	—West MichiganKalamazoo, Mich.
*Nov. 8	—Morehead StateHome
*Nov. 15	—Eastern StateRichmond, Ky.
Nov. 22	—Murray StateMurray, Ky.
*Night Games		

Pushin's

HOME OF—
HART, SCHAFFNER & MARX CLOTHES
FLORSHEIM, FRIENDLY AND FORTUNE SHOES

After the game meet your buddies at the

HILLTOPPER'S LUNCH

KIRBY BROS. APPLIANCE CO. PHILCO RADIOS

Appliances

Phone 280

Across from B. G. High

1148 Center

AFTER THE GAME IT'S THE

GOALPOST

"HUB OF THE HILL"

COMPLIMENTS OF

Carpenter-Dent-Sublett Company

C. D. S. NO. 1
Emory Dukes, Mgr.
401 Park Row

C. D. S. NO. 2
A. R. Douglas, Mgr.
901 College Street

C. D. S. NO. 6
Leichhardt Bros., Mgrs.
Main and State Streets

C. D. S. NO. 4
M. A. Vaughn, Mgr.
10th and State Sts.

BORDERS PURE MILK COMPANY

Phone 891

Meet Me At
PEARSON
DRUGS
After The Game

Phone 34 College & Main

Good Luck Hilltoppers

From

Lt. Harold R. Cornwell

Post 1298, Veterans of Foreign Wars



Dodge

Compliments of

Plymouth

Leachman - Potter Motor Co.

Phone 560

Harry Leachman

Harry Potter

Everybody Reads The

Park City Daily News

"First In Southern Kentucky"

Good Luck Hilltoppers

Compliments of

J. C. Penney Co.

Outfitters for the Entire Family

The Buel Rogers Co.

INCORPORATED

410 10th St.

*Across From The Court
House*

Norge Household
Bendix Home Appliances

Air Conditioning and
Refrigeration Headquarters