

9-23-1950

# UA19/17/4 Football Program - WKU vs Howard University

WKU Athletics

Follow this and additional works at: [http://digitalcommons.wku.edu/dlsc\\_ua\\_records](http://digitalcommons.wku.edu/dlsc_ua_records)

---

## Recommended Citation

WKU Athletics, "UA19/17/4 Football Program - WKU vs Howard University" (1950). *WKU Archives Records*. Paper 657.  
[http://digitalcommons.wku.edu/dlsc\\_ua\\_records/657](http://digitalcommons.wku.edu/dlsc_ua_records/657)

This Other is brought to you for free and open access by TopSCHOLAR®. It has been accepted for inclusion in WKU Archives Records by an authorized administrator of TopSCHOLAR®. For more information, please contact [topscholar@wku.edu](mailto:topscholar@wku.edu).

# OPENING HOME GAME OF 1950

Bowling  
Green  
Kentucky

Western  
Stadium



## WESTERN

HOWARD COLLEGE  
SEPT. 23

VS.

MARSHALL COLLEGE  
OCT. 7

## HOWARD

SATURDAY NIGHT

7:30 P. M.

SEPTEMBER 23, 1950

GEORGETOWN COLLEGE  
OCT. 21

EASTERN  
(Homecoming)  
NOV. 11

MURRAY  
NOV. 18

Nº 1665

FIFTEEN CENTS

For Howard

WKCT

NEWS  
MUSIC  
SPORTS

Everybody Reads The

# Park City Daily News

*"First In Southern Kentucky"*

WKCT

1,000 WATTS  
930  
On Your Dial

## Carpenter - Dent - Sublett Company

**C. D. S. NO. 1**  
Emory Dukes, Mgr.  
401 Park Row

**C. D. S. NO. 2**  
A. R. Douglas, Mgr.  
901 College Street

**C. D. S. NO. 6**  
Leichhardt Bros., Mgrs.  
Main and State Streets

**C. D. S. NO. 4**  
M. A. Vaughn, Mgr.  
10th and State Sts.

Make  
HERMAN

# Lowe's

Your Sport  
Headquarters

946 Corner State & Tenth Sts.  
Sports ● Hardware ● Paints  
Telephone 227

AS USUAL OLD FRIENDS  
WILL MEET AT THE

## UNIVERSITY INN

Steaks And Freezer Fresh Ice Cream  
Are Our Specialties

# Pushin's

*"Southern Kentucky's Leading Department Store"*

Welcome Western Students

## Citizens National Bank

Bowling Green, Kentucky

## FIELDS CLEANERS

CLEANING BY THE NEW  
SEC-C-MATIC PROCESS

1117 Broadway

Phone 2200

BEST WISHES TO THE... *Hilltoppers*

From the

*"Kentucky's Best Football Team"*

## BOWLING GREEN LAUNDRY COMPANY

Phone 700

*"Kentucky's Best Cleaners"*

929 Center

(This football program published by the College Heights Herald, Official publication of the Western Ky. State College Alumni Association)

## HILLTOPPER COACHING STAFF



**ASSISTANT COACH  
TURNER ELROD**

**HEAD COACH  
JACK CLAYTON**

**ASSISTANT COACH  
FRANK GRIFFIN**

Western's coaching staff has been hard at work since Sept. 1 when practice opened re-moulding a football machine which was hard hit by graduation last season. Twenty-five members from last year's squad graduated in June but Head Coach Jack Clayton is depending on several up-and-coming sophomores who as freshmen last season showed exceptional promise.

The three coaches are watching the squad in a rough scrimmage in the Western Stadium. From the showings made in such heavy practice sessions, the coaches made the decision as to what players would be in the starting lineups for tonight's game with Howard College which officially opens the 1950 football campaign for the Hilltoppers.

Next Saturday night the Hilltoppers travel to Evansville for the annual meeting with the Evansville College Purple Aces. The following Saturday night Coach Clayton and his crew will be back here in the Western Stadium for a clash with the powerful Marshall College Thundering Herd.

*If You Can't Travel With The Hilltoppers*

*Tune In*

**WLBJ** OR **WBON** —WLBJ'S New FM Station

MEMBER

MUTUAL BROADCASTING SYSTEM  
SOON SOUTHERN KENTUCKY'S MOST POWERFUL STATION

# ALLEN MOTOR COMPANY

Your CHRYSLER—PLYMOUTH Dealer For 26 Years

416-418 11th St.

"Better Used Cars"

Phone 1584 or 2112

## WESTERN'S SENIORS



Al Green—Guard



Owen Blanton—Guard



Joe Talley—Guard



Henry Cowan—End



Butch Gilbert—Center

### The Optical Shop

John B. Cooke,  
Your Optician

Telephone 982

513 E. Main St.

### PARK CITY HOTEL

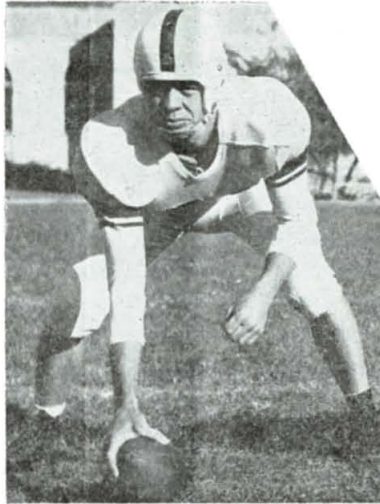
We're Behind You Hilltoppers

THE  
GOALPOST  
"HUB OF THE HILL"

WESTERN'S SENIORS



James McChesney—End



John Lanier—Center



Roy Hina—Guard



Hoyte Threet—Tackle



Gene Glod—Back

More And More Students Are Finding

**NORMAN'S**

A Good Place To Shop

# Bowling Green Bank and Trust Co.

Bowling Green, Ky.

General Banking

Phones 681 or 682

Trust Service

*"A Growing Bank And Trust Company In A Growing Community"*

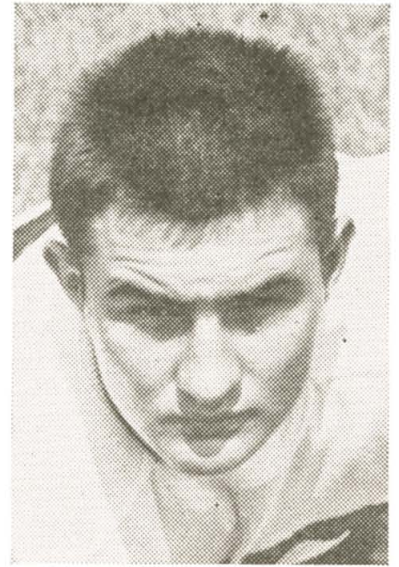
## Hilltopper Co-Captains For 1950 Season



**JOE TALLEY**

When the Hilltoppers voted to elect a captain for this year's team two rugged senior linemen ended up in a tie for the honor. Thus the Western eleven will be represented this season by two men, Joe Talley and Roy Hina.

Hina is a 195-pound guard from Sturgis, Kentucky. He has plenty of fight and ability which he has ably demonstrated over the past three seasons as mainstay in the Hilltopper line. He hits hard and is a vicious performer either on offense or defense.



**ROY HINA**

Talley is a 200-pound product of Bowling Green high school. For the past three seasons he has starred at a guard post but this season Coach Clayton moved the burly six-footer over to tackle to strengthen a soft spot left open when last year's starting tackles graduated in June.

These two top notch linemen playing along side each other in the Western line should provide plenty of inspired leadership for a young team largely composed of sophomores and freshmen.

Coach Jack Clayton when he learned of the choice for co-captains said, "It was a fine selection. They should make us a great pair of leaders."

Both Talley and Hina are the type of football players who like the game and never quit trying no matter how rough the going gets. Neither man is ever ready to concede defeat.

## Helm Hotel Coffee Shop

Bowling Green's Smart Eating Place

Have a Coke

DRINK

Coca-Cola

TRADE-MARK ®

Probable Western Line-up (Offense)

LE Osborne 36	LT Threet 54	LG Hina 43	C Davison 51	RG Blanton 42	RT Talley 53	RE McChesney 57
			QB Feix 66			
			LH Chapman 29	RH Sowers 49		
			FB Watson 50			

Probable Howard Line-up

LE H. Foote 46	LT T. Smith 51 or Norred 43	LG Baneroft 24	C J. Smith 27	RG Maze 22	RT P. Foote 44 or T. Wade 45	RE Roberts 42
			QB B. Bowden 7			
			LH McClendon 2	RH W. Wallace 21		
			FB Banks 20			

OFFICIALS

Hickman Duncan (Nashville); John L. Uhlian, (Nashville); Hugh Howser (Nashville); Tom Ellis (Covington, Ky.)

See page 10 for Howard offense and Western defense



Bowling Green Coca-Cola Bottling Works, Inc.



## WESTERN SQUAD

20—Smith, B. '53	B	19	5' 7"	185
21—Lanier '51	C	27	6' 2"	180
22—Goodman '53	E	18	6' 0"	175
23—Mahan '53	G	18	5'10"	195
24—Price '53	T	21	6' 0"	210
25—Martin '54	E	22	6' 2"	185
26—Gill '54	E	18	6' 3"	190
27—Ploumis '54	E	18	6' 3"	190
28—Simpson '53	B	18	5'11"	170
29—Chapman '52	B	24	5' 8"	165
30—Smith, D. '52	B	20	5' 7"	185
31—Gilbert '51	C	20	6' 0"	215
32—Schirtzinger '54	G	18	5'10"	165
33—Robinson '53	G	22	5'11"	210
34—Haddock '54	T	18	6' 0"	195
35—Sauer '53	C-G	19	5'11"	180
36—Osborne '53	E	19	6' 0"	185
37—Bogdon '53	E	21	6' 0"	185
39—Scott '54	B	18	5'11"	170
40—Glod '51	B	21	5'10"	175
41—Crouch '54	C	18	5'11"	180
42—Blanton '51	G	20	5' 9"	185
43—Hina '51	G	21	5'11½"	195
44—Holzknecht '54	B	18	5' 5"	145
45—Weaver '54	T	18	6' 1"	190
46—Cowan '51	E	20	6' 3"	210
47—Sacca '53	E-T	20	6' 1"	200
48—Bilyeu '54	B	18	5' 6"	145
49—Sowers '53	B	18	5'11"	170
50—Watson '53	B	22	6'1½"	160
51—Davison '53	C	19	5'11"	224
52—Satterly '54	G	18	5' 5"	185
53—Talley '51	T-G	21	6' 0"	200
54—Threet '51	T	22	6' 0"	210
55—Embreton '54	T	18	6' 1"	190
56—Busse '54	E	18	6' 0"	180
57—McChesney '51	T-E	21	6' 3"	195
58—Nutter '53	B	20	6' 0"	170
59—Eimer '52	B	19	6' 0"	170
60—McFadden '54	B	18	5'11"	175
61—Rue '53	C	19	6' 1"	200
62—Newcom '53	G	21	5' 9"	180
63—Sanders '54	G	18	5' 6"	170
64—Green '51	T-G	21	5'11"	205
65—Henry '54	T	18	6' 2"	185
66—Feix '53	B	18	5'10"	160
67—Tate '54	E	18	6' 2"	185
68—Short '52	B	21	5'10"	155
69—Stevens '53	B	18	5'11"	160
74—Groschelle '53	C	18	6' 4"	271

# THE LARGEST SE IN AMERICA

BY LATEST NA



**A** *Always* **B** *Buy* **MUCH**  
**MILDER**

# LLING CIGARETTE S COLLEGES

ATIONAL SURVEY



## HOWARD SQUAD

1—Bancroft, Billy '51	G	18	5'11"	170
2—McClendon '52	B	22	5' 9"	170
3—Jefferson '53	B	19	5'11"	150
4—Hearn '53	G	20	5'10"	175
5—Griffith '54	E	20	5'11"	170
6—Marsh '54	C	17	5'11"	162
7—Bowden '53	B	20	5' 8"	160
8—Pappas '53	B	20	5' 8"	150
9—Stacy '54	B	20	5'10"	160
20—Banks '53	B	23	6' 0"	175
21—Wallace, W. '53	B	22	5'10"	175
22—Maze '52	G	23	5' 8"	180
23—Wallace, J. '54	B	19	5' 8"	165
24—Bancroft, Ben '54	G	18	5'11"	170
25—Hanes '51	B	23	6' 0"	180
26—Skelton '52	G	21	5' 8"	180
27—Smith, J. '54	C	20	5'11"	165
28—Johnson, F. '54	G	21	5' 9"	179
29—Maples '52	E	20	6' 3"	180
30—Davis '51	C	23	5'10"	190
31—Sarkiss '54	G	19	5' 9"	180
40—Jones '51	B	29	5'10"	185
41—Johnson, B. '53	B	20	6' 1"	194
42—Roberts '52	E	20	6' 2"	185
43—Norred '54	T	17	5'11"	210
44—Foote, P. '52	T	22	6' 1"	187
45—Wade '51	T	23	5'11"	205
46—Foote, H. '51	E	22	6' 2"	190
47—Thompson '54	E	19	6' 4"	185
50—Cutcliffe '53	B	22	5' 9"	160
51—Smith, T. '53	T	20	6' 2"	220
52—Carlilse '54	T	20	6' 2"	220
DeCarlo '53	T-G	20	5' 7"	190
Sims '53	G	20	6' 1"	208
Slatsky '53	E	23	5'10"	160
Weldon '52	T	24	6' 2"	225

# CHESTERFIELD

Have a Coke

DRINK

Coca-Cola

TRADE MARK



Probable Howard Line-up

LE	LT	LG	C	RG	RT	RE
H. Foote	T. Smith	Bancroft	J. Smith	Maze	P. Foote	Roberts
46	51	24	27	22	44	42
	or Norred				or T. Wade	
	43				45	
			QB			
			B. Bowden			
			7			
	LH			RH		
	McClendon			W. Wallace		
	2			21		
			FB			
			Banks			
			20			

Probable Western Line-up (Defense)

LE	LT	LG	C	RG	RT	RE
Sacca	Price	Hina	Gilbert	Groschelle	Green	Bogdon
47	24	43	31	74	64	37
			QB			
			Stevens			
			69			
	LH			RH		
	Glod			Simpson		
	40			28		
			FB			
			D. Smith			
			30			

OFFICIALS

Hickman Duncan (Nashville); John L. Uhllan (Nashville); Hugh Howser (Nashville); and Tom Ellis (Covington, Ky.)

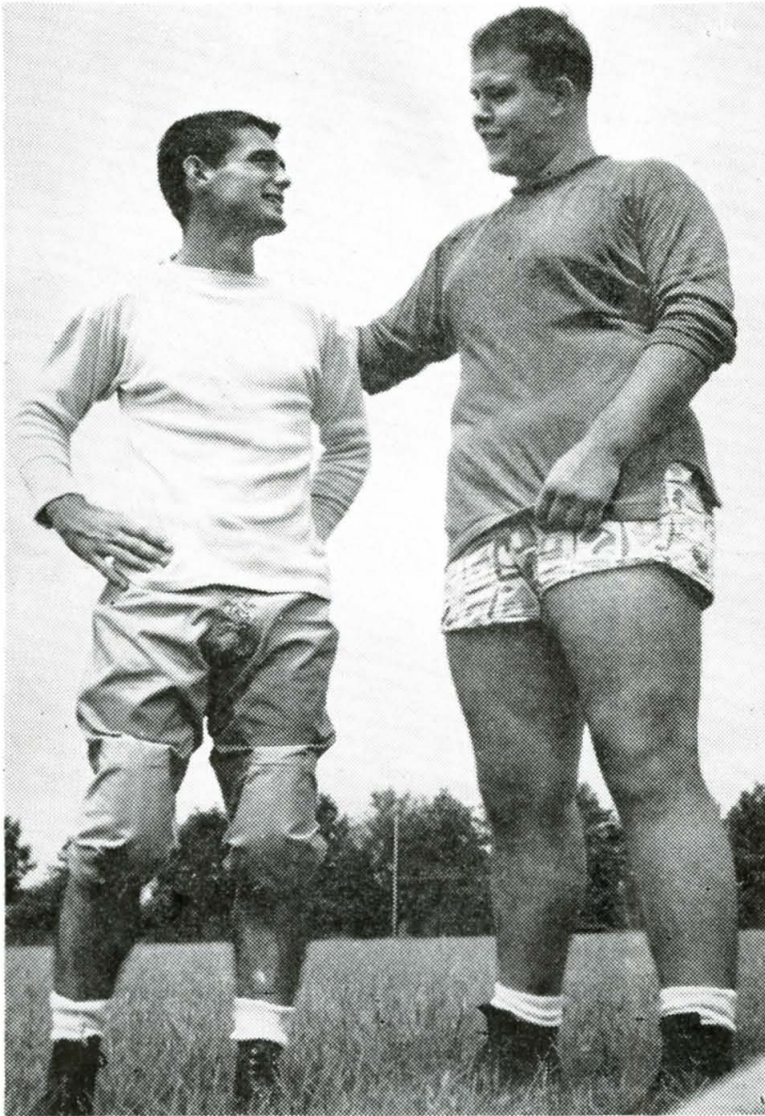
See page 7 for Western offense and Howard defense

Bowling Green Coca-Cola Bottling Works, Inc.

# BROWN ICE CREAM AND MILK COMPANY

- GRADE "A" PASTEURIZED MILK •
- ICE CREAM • AND BUTTER •

## Western's Largest And Smallest



**BOBBY BILYEU**

**FRANK GROSCHELL**

When the Western football squad opened fall practice on the first day of September the largest member of the squad, Frank Groschell, got together with the smallest member, Bobby Bilyeu, to give the little All-Stater some words of advice on what is expected of a freshman high school All-State member of the Hilltopper squad.

Groschell should know what he was talking about as he was an All-State tackle at Somerset high school before coming to Western in the fall of 1949.

Bilyeu, who starred for El Donaldson's Bowling Green high Purples last season as a speedy half-back, weighs 145 pounds and tands five feet, nine inches tall.

The giant Groschell who has moved to an offensive center post this season wieghs 255 pounds and stands six feet, five inches tall.

Both players have been looking exceptional well in the pre-season practice sessions. Bilyeu, whom all high school football fans throughout south central Kentucky will remember for his thrilling long touchdown runs, has been somewhat hampered by a pulled muscle, but he has shown that he can go when given a little blocking.

Southern  
Kentucky's



Largest  
Diamond Store

**Howard Jewelers Inc.**

Main Bus Stop On The Square  
*"It's Easy To Pay The Howard Way"*

**Dollar Bros. Shoe Co.**

FINE SHOES  
Fitted by X-Ray

Bowling Green, Ky.

Phone 486

# KIRBY BROTHERS

AMUSEMENT MACHINES — RADIOS  
APPLIANCES — RECORDS

Bowling Green, Ky.

Phone 280

1148 Center Street

# LEON'S

★ ★ On Park Row ★ ★

The Store Of Smart Apparel

**1. OFF-SIDE**  
Penalty - 5 yards

**2. ILLEGAL POSITION OR PROCEDURE**  
Penalty - 5 yards from where ball was put in play

**3. ILLEGAL MOTION OR SHIFT**  
Penalty - 5 yards  
If from shift or huddle - 15 yards

**4. ILLEGAL DELAY OR EXTRA TIME OUT**  
Penalty - 5 yards

**5. UNNECESSARY ROUGHNESS**  
Penalty - 15 yards

Military salute also used for clipping, followed by striking the back of the knee with hand  
Penalty - 15 yards

Signal also used for disqualification fouls and for turning into or roughing the kicker. In the latter case, the military salute is followed by swinging the leg as though kicking

**6. UNSPORTSMANLIKE CONDUCT**  
Penalty - 15 yards. For flagrant unsportsmanlike conduct - 15 yard penalty and disqualification

**7. ILLEGAL USE OF HANDS OR ARMS**  
Penalty, by offense 15 yards; by defense - 5 yards

**8. INTENTIONAL GROUNDING**  
Penalty - loss of down and 15 yard penalty from spot of preceding down

**9. ILLEGALLY PASSING OR HANDING BALL FORWARD**  
Penalty - 5 yards

**10. FORWARD PASS OR FAIR CATCH INTERFERENCE**  
If penalty on offense - 15 yards and loss of down; interference by defense, ball to offense on spot of foul as first down

**11. BALL ILLEGALLY TOUCHED, KICKED OR BATTED**

**12. INCOMPLETE FORWARD PASS; PENALTY DECLINED; NO PLAY OR NO SCORE**

**13. CRAWLING; HELPING THE RUNNER OR INTERLOCKED INTERFERENCE**  
Penalty for helping ball-carrier - 15 yards; otherwise 5 yards

**14. BALL DEAD**

**15. TOUCHDOWN OR FIELD GOAL**

**16. SAFETY**

**17. TIME OUT**

**18. FIRST DOWN**

**19. START THE CLOCK OR NO MORE TIME-OUTS ALLOWED**

## Big 7 Furniture Stores

"Quality Furniture For Less Money"

Bowling Green, Kentucky

## American Hardware Co.

1023 State St.

Bowling Green, Kentucky

THE THINKING FELLOW CALLS A YELLOW CAB

Prompt and Courteous Service

# YELLOW CAB CO.

Phone 1000

# Western And Howard Meet For Seventh Time

Tonight's opening game of the 1950 season brings together two teams which have been frequent opponents since 1934. The two elevens have met six times previously with the Hilltoppers taking two games, the Bulldogs three and one resulted in a 0-0 tie.

Last season the Birmingham, Ala. team invaded the Hilltop for the fifth game of the season. Dad's Night was celebrated by the Hilltoppers that evening and the fathers of the Western gridgers saw their sons cart off a 20-0 victory, the most one-sided win registered by either team in the history of the series.

Prior to last year's great victory the Hilltoppers had been on the short end of the score most of the way. In 1941 when the Bulldogs came in for the last meeting between the two teams until 1949, the southerners scored a 20-7 triumph in the Western Stadium before a Dad's Day crowd of 3,000 fans.

The Hilltoppers were unable to stop Jimmy Tarrent, one of the sparkiest sparkplugs ever to play on Western soil. He repeatedly circled the Western ends for nice gains, played brilliantly in the safety position, did a neat job of kicking and hit with 14 of his 21 bullet-like passes.

The first meeting with Howard came on Homecoming Day, 1934. It was in this game that the 0-0 tie resulted. The following year found the Birmingham eleven back in the Western Stadium for Homecoming Day. This time the Hilltoppers absorbed the worst licking in the history of Homecoming tilts by a 19-0 count.

In 1936 the Bulldogs eked out a 14-6 victory in the Western Stadium in a hard-fought ballgame which was not decided until the final gun sounded. The following year found the two schools not playing each other but in 1938 they took up the gridiron battle again.

The Bulldogs came back to the Western Stadium where they had never been beaten

but the Hilltoppers refused to be humbled this time. They came through with a 6-0 win, the first registered over the southern eleven. Howard came in with a highly touted triple-threat man in Clyde White but the Hilltoppers bottled him up tight.

Western's lone score came after Raymond VanMeter recovered a fumble by White. With Duke Dulaney tossing to Curly Pitman and George Bibich barreling through the line for long gains, Western went from the Howard 45-yard stripe to the three from where Bibich carried the ball over. Thus the Hilltoppers cracked into the win column for the first time against the Bulldogs from Birmingham.

It was not until 1941 that Western and Howard met again. This time the Bulldogs brought in another berated triple-threat man in Tarrent and he lived up to his advance notices with devastating results.

To date Howard has outscored Western 53 points to 39. In registering last year's victory the Hilltoppers scored more points in the one game than the Western elevens had been able to notch in the five previous meetings. In tonight's game the new Hilltopper edition will be trying to cut down even further that difference in points and get away to an auspicious start for the 1950 campaign.

Howard was a football power among schools throughout the South before World War II. Last year marked the first season the Bulldogs had actively entered the football arena since the war. With the great victorious tradition built up during the thirties to urge them on the Bulldogs promise to be a potent threat to any team this year.

Western also carries into tonight's game a great victory heritage handed down by great Hilltopper elevens since 1913. Both elevens will be seeking to re-establish the gridiron glory known before World War II interrupted and called away some of their greatest stars. Tonight's meeting will bring together two teams surging to get away to a flying start on the 1950 season.

# TROY LAUNDRY

Phone 179

429 E. Main

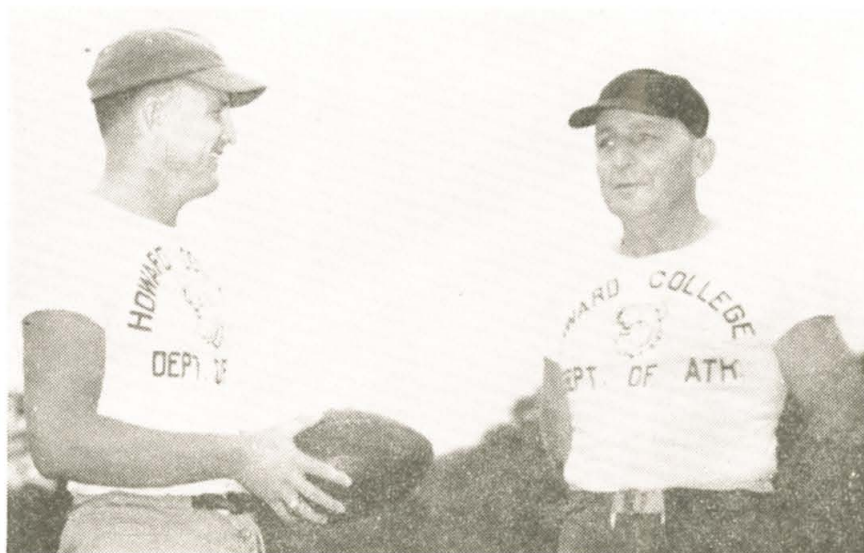
Bowling Green, Ky.

# Biggs Furniture Co.

310 Main St.

Phone 160

## Howard College Bulldogs



Head Coach Earl Gartman

Line Coach Claude Pevey



Wade Wallace  
Right Halfback

# BORDERS PURE MILK COMPANY

Phone 891

For All Your Needs Come To

## HOLLAND DRUG CO.

Phone 81

100 Main St.

## American National Bank

Safe And Friendly

Since 1886



The Fairfield

*Behind these lovely doors...  
the world's finest television*

## RCA VICTOR 16-INCH



When you choose your television set, remember, you're making a *long term* investment. That's why today so many value-conscious television buyers are choosing the RCA Victor 6T71. Its big 16-inch pictures are the clearest. They're *locked in place* by the Eye Witness Picture Synchronizer. The new, powerful chassis performs even in weak signal areas. "Golden Throat" tone system. A phono-jack to plug in your favorite record attachment, most likely the RCA Victor "45." And when it comes to beauty, the RCA Victor 6T71 will seem new to you for years to come. When you choose the RCA Victor 6T71 you get long term satisfaction, enjoyment and beauty. Be sure to see the exciting Fairfield, Model 6T71. Be sure to ask about the RCA Victor Factory-Service Contract, too.

# Warren County Hardware Co.

Bowling Green, Ky.

934 State St.

Phone 328



DODGE - PLYMOUTH

## Leachman-Potter Motor Co.

927 Center St.  
Phone 2650

Harry Leachman

"Exclusive Hotpoint Headquarters"

## Leachman-Potter Inc.

10th & Center Streets  
GOODRICH TIRES  
Phone 2750

Harry Potter

Good Luck Hilltoppers

## J. C. Penney Co.

*Outfitters for the Entire Family*

Try Shell Premium  
The Most Powerful  
Gasoline Your Car  
Can Use

U. S. Royal and Seiberling Tires  
Oil Heat Specialists

## MOBLEY OIL CO., Inc.

Louisville Road

Phone 424

Meet Me At

## PEARSON

## DRUGS

After The Game

Phone 34

College & Main

GO HILLTOPPERS!



## Garnett Sporting Goods Co.



432 10th St.

Phone 307

"Everything For The Athlete"

Make The

## MANSARD HOTEL

Your Home in Bowling Green

Geo. Williamson, Mgr.

PHONE 520

## McFarland's

CLEANERS—LAUNDRY

MAIN PLANT  
1122-24 CENTER ST.



BRANCH OFFICE  
THIRD & COLLEGE