

10-13-1951

UA19/17/4 Football Program - WKU vs Morehead State University


WKU Athletic Public Relations

Follow this and additional works at: http://digitalcommons.wku.edu/dlsc_ua_records

Recommended Citation

WKU Athletic Public Relations, "UA19/17/4 Football Program - WKU vs Morehead State University" (1951). *WKU Archives Records*. Paper 664.
http://digitalcommons.wku.edu/dlsc_ua_records/664

This Other is brought to you for free and open access by TopSCHOLAR®. It has been accepted for inclusion in WKU Archives Records by an authorized administrator of TopSCHOLAR®. For more information, please contact topscholar@wku.edu.



Western
stadium

Bowling
Green
Kentucky

No 1301

WESTERN
VS.
MOREHEAD

7:30 P. M.
SATURDAY NIGHT
OCTOBER 13, 1951

VAN KELLER

10 CENTS

**Be Happy -
Go Lucky!**

EILEEN WILSON, Lucky Star of TV and Radio, says:
At football games I love to cheer
"Go team!" and "Hip Hooray!"
But for a better taste I shout,
"Go Lucky Strike today!"
(Luckies taste better than any other cigarette!)



**LUCKIES TASTE BETTER
THAN ANY OTHER CIGARETTE !**

**L.S./M.F.T.-
Lucky Strike Means Fine Tobacco**

(This football program is published by the College Heights Herald, Official publication of the Western Ky. State College Alumni Association)

Represented for National Advertising by DON SPENCER COMPANY, INC., 271 Madison Ave., New York City.

HILLTOPPER COACHING STAFF



HEAD COACH JACK CLAYTON

ASST. COACH TURNER ELROD

ASST. COACH FRANK GRIFFIN

Tonight the Hilltoppers are seeking to get back on the victory trail at the expense of Coach Ellis Johnson's Morehead Eagles in an Ohio Valley Conference game. Last week at Huntington, West Virginia, the Marshall College Thundering Herd derailed the Western powerhouse, 35-21, in an OVC tilt to hand the Hilltoppers their initial loss of the season. Previously the Hilltoppers had smashed Bethel College, 56-0, and Evansville College, 41-7, to rank among the small college scoring and ground gaining leaders in the nation.

Last year the Hilltoppers did not hit their stride until Marshall had beaten them 47-13 in the Western Stadium in Western's third game of the season. After that loss to the Thundering Herd the Hilltoppers surged back to win five games in a row before battling Murray, the loop champion, to a 27-27 tie.

Coach Jack Clayton and his assistants have been wondering all this past week as they drove the squad through hard practice sessions if that same thing will happen again this season. Last year the Hilltoppers started their streak against Morehead and tonight they have the opportunity to begin another string of wins with the Eagles the first to fall.

AGAIN—ALL WESTERN FOOTBALL AND BASKETBALL GAMES
BROADCAST OVER ASHLAND-AETNA SPORTS NETWORK
ORIGINATED BY

WLBJ NOW 5000 WATTS

Paul
The Most Powerful Radio Station In Southern And Western Kentucky

ALLEN MOTOR COMPANY

Your CHRYSLER-PLYMOUTH Dealer For 27 Years

paid

416-418 11th St.

"Better Used Cars"

Dial 4387 or 4388

WESTERN'S SENIORS



James McChesney
End or Tackle



Co-Captain Sam Short
Halfback



Dewey Smith
Back

FIELDS CLEANERS

CLEANING BY THE NEW
SEC-O-MATIC PROCESS

1117 Broadway

Dial 8312

LEON'S

★ ★ On Park Row ★ ★

The Store Of Smart Apparel

The Optical Shop

John B. Cooke
Your Optician

Dial 6556

513 E. Main St.

paid MEET ME AT
Pearson Drugs

AFTER THE GAME

Dial 9058

College & Main



Paid THE
GOALPOST
 "HUB OF THE HILL"



WESTERN'S SENIORS



Bob Eimer
 Back



Co-Captain Lawrence Gilbert
 Center



Owen Blanton
 Tackle

DIAL 4301

McFarland's
 CLEANERS — LAUNDRY

MAIN PLANT
 1122-24 CENTER ST.



BRANCH OFFICE
 THIRD & COLLEGE

More And More Students Are Finding

Paid

NORMAN'S

A Good Place To Shop

Bowling Green Bank and Trust Co.

Bowling Green, Ky.

General Banking

Dial 4348 - 4349

Paik
Trust Service

"A Growing Bank And Trust Company In A Growing Community"

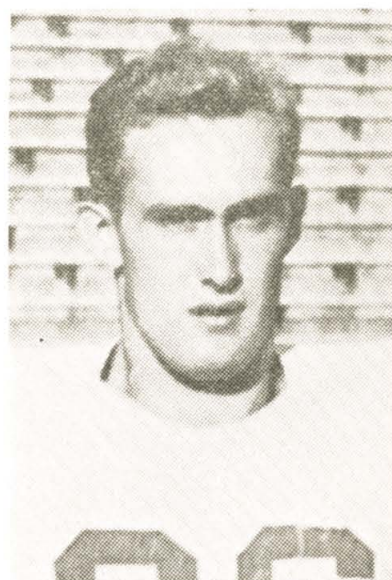
WESTERN'S SOPHOMORES



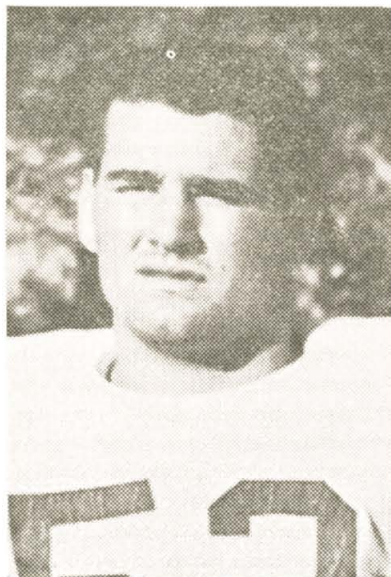
BILL PLOUMIS—END



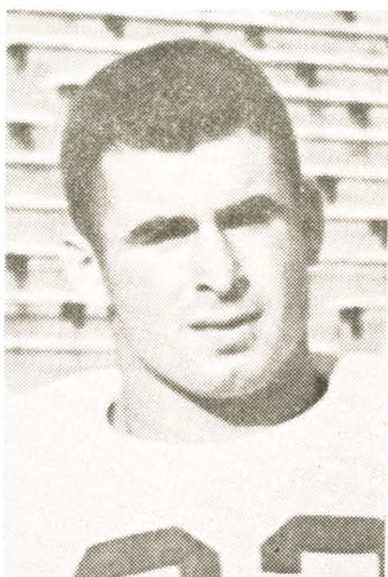
GLIN EMERTON—TACKLE



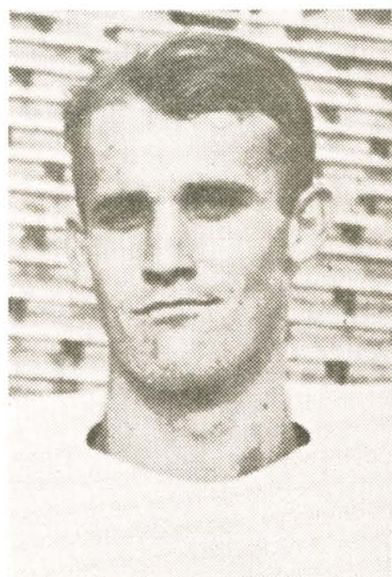
JOE GOODMAN—END



MARVIN SATTERLY—GUARD



CECIL SCHIRTZINGER—CENTER



JOHN GILL—END

Helm Hotel Coffee Shop

Bowling Green's Smart Eating Place

DRINK

Coca-Cola

add Zest

PROBABLE WESTERN LINE-UP (OFFENSE)

LE Ploumis 27	LT Price 24	LG Sauer 43	C Gilbert 51	RG Satterly 52	RT Blanton 25	RE Simpson 56
			QB Feix 66			
			LH Short 68	RH Sowders 49		
			FB Watson 50			

PROBABLE MOREHEAD LINE-UP (DEFENSE)

LE Harper 82	LT Bailey 91	LG Slatterly 80	C Fraley 87	RG Rammelsburg 58	RT Layne 90	RE Wade 77
			QB Porter 84			
			LH Pendergraft 88	RH Pitakos 66		
			FB Peters 83			

OFFICIALS

Referee: Raymond Kraesig, Louisville; Umpire: John Showalter, Georgetown; Head Linesman: John Uhlian, Nashville; Field Judge: Bobby Worrell, Nashville.

See line-ups on page 10 for Morehead offense and Western defense



Bowling Green Coca-Cola Bottling Works, Inc.

**Western Kentucky
State College Squad**

No.	Name	Po.	Age	Hgt.	Wt.
21	Apperson, '55	C	18	6'1"	165
22	Nutter, H., '55	B	19	5'10"	155
23	Mahan, '52	G	19	5'10"	190
24	Price, '52	T	22	6'	200
25	Blanton, '52	T	22	5'10"	204
26	Gill '54	E	19	6'2"	190
27	Ploumis, '54	E	19	6'4"	212
28	Henry, '55	B	19	5'10"	165
29	Chapman, '54	B	25	5'8"	165
30	Smith, D. '52	B	21	5'9"	180
31	Henry, '55	B	18	5'10"	165
32	Schirtzinger, '54	C	20	5'10"	165
33	Sanders, '55	B	20	5'10"	165
34	Passafiume, '55	T	17	5'10"	205
35	Emerton, '54	T	20	6'	193
36	Goodman, '54	E	20	6'	180
37	Sparks, '55	E	18	5'11"	170
38	Magers, '53	B	20	5'8½"	165
39	White, '55	B	19	5'7"	150
40	Thorpe, '54	B	21	6'1½"	210
41	Hina, '55	C	18	6'	175
42	Bradford, '55	B	19	6'	185
43	Sauer, '54	G	21	5'10"	175
44	Holzknicht, '54	Q	18	5'8"	175
45	Ware, '55	T	18	6'	230
46	Binkley, '55	E	19	5'11"	170
47	Mercer, '55	E	19	6'2"	160
48	Bilyeu, '54	B	18	5'7"	148
49	Sowers, '53	B	20	5'11"	175
50	Watson, '53	B	24	6'1½"	155
51	Gilbert, '52	C	21	6'	212
52	Satterly, '54	G	19	5'8"	196
53	Veech, '55	G	17	5'10"	185
54	Hill, '55	T	18	5'11"	195
55	McKenzie, '55	T	19	5'10"	190
56	Simpson, '53	E	20	6'	180
57	McChesney, '52	E	22	6'3"	195
58	Nutter, R., '53	B	21	6'	170
59	Eimer, '52	B	21	6'	175
60	McFadden, '54	B	20	5'10"	191
61	Rue, '53	C	20	6'1"	200
62	Newcom, '53	G	23	5'9"	180
63	Hardy, '55	B	18	5'10"	165
64	Frederick, '55	T	18	6'1"	195
65	Henry, '54	T	21	6'4"	200
66	Feix, '53	Q	20	5'9"	149
67	Tate, '54	E	21	6'2"	190
68	Short, '52	B	23	5'10"	147
69	Stevens, '53	B	20	5'10½"	160
70	Hale, '55	B	18	5'9"	165
74	Smith, H. '55	T	18	6'½"	185

**SCIENCE
DISCOVERED IT
YOU CAN
PROVE IT-**



**"NO UNP
AFTER-**

WHEN YOU
CHESTE

**MORE COLLEGE ME
CHESTERFIELD THAN A**



Morehead Kentucky State College Squad

No.	Name	Po.	Age	Hgt.	Wt.
50	Reed	E	18	6'2"	160
52	Perpich	B	19	5'9"	165
55	Gobel	B	19	5'11"	170
58	Rammelsburg	G	20	5'8"	175
60	Bloss	B	20	5'10"	165
61	Hoffman	E	18	5'11"	170
65	Adams	E	20	5'10"	175
66	Pitakos	B	20	5'10"	170
67	Adkins	B	18	5'9"	170
69	Bates	G	20	5'8"	180
73	Potter	C	19	5'11"	190
76	Delonga	E	19	6'2"	190
77	Wade	E	20	6'	190
80	Slattery	G	20	5'10"	190
81	Spencer	T	19	6'	180
82	Harper	E	18	6'	195
83	Peters	B	18	6'	205
84	Porter	B	20	6'1"	205
87	Fraley	C	20	5'10"	185
88	Pendergraft	B	20	6'	190
89	Schrader	T	20	6'	190
90	Layne	T	20	6'2"	210
91	Bailey	T	21	6'	215

**PLEASANT
TASTE"**

YOU SMOKE

CHESTERFIELD

**AND WOMEN BUY
ANY OTHER CIGARETTE**

DRINK

Coca-Cola

add Zest

PROBABLE MOREHEAD LINE-UP (OFFENSE)

LE Harper 82	LT Eailey 91	LG Slatterly 80	C Fraley 87	RG Rammelsburg 58	RT Layne 9)	RE Wade 77
--------------------	--------------------	-----------------------	-------------------	-------------------------	-------------------	------------------

QB
Porter
84

LH
Pendergraft
88

RH
Pitakos
66

FB
Peters
83

PROBABLE WESTERN LINE-UP (DEFENSE)

LE Simpson 56	LT Price 24	LG Satterly 52	C Gilbert 51	RG Sauer 43	RT Blanton 25	RE Tate 67
---------------------	-------------------	----------------------	--------------------	-------------------	---------------------	------------------

QB
Stevens
69

LH
R. Nutter
58

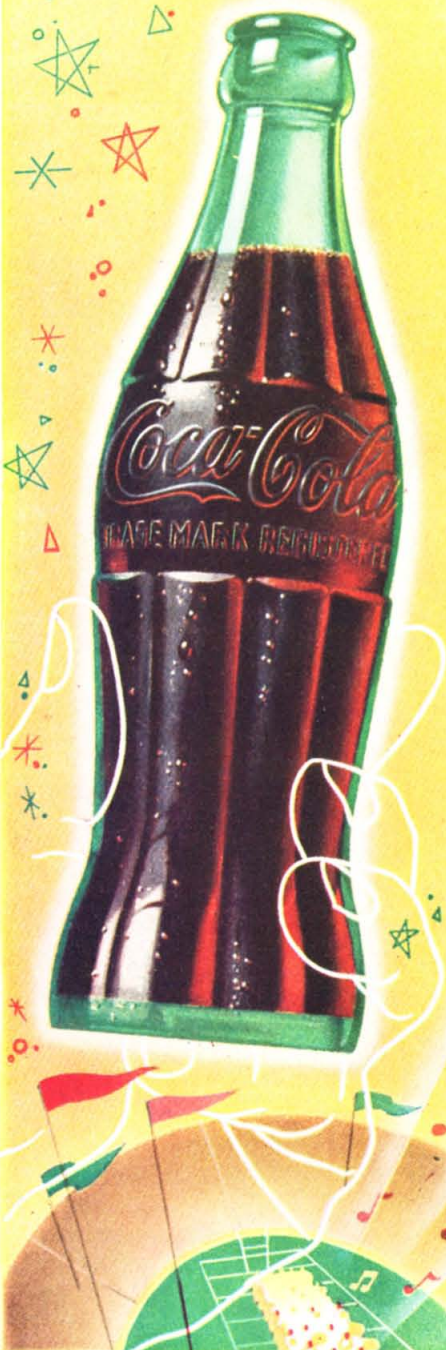
RH
Bilyeu
48

FB
D. Smith
30

OFFICIALS

Referee: Raymond Kraesig, Louisville; Umpire: John Showalter, Georgetown; Head Linesman: John Uhlian, Nashville; Field Judge: Bobby Worrell, Nashville.

See line-ups on page 7 for Morehead defense and Western offense

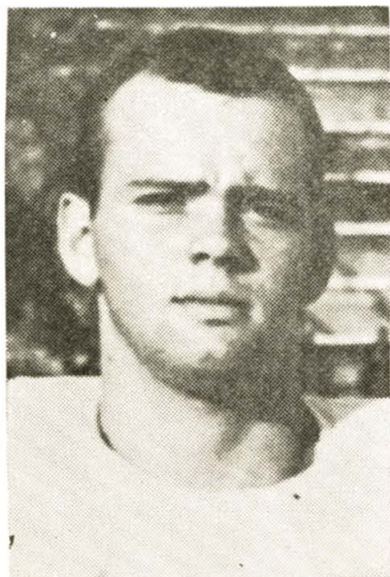


Bowling Green Coca-Cola Bottling Works, Inc.

BROWN ICE CREAM AND MILK COMPANY

- GRADE "A" PASTEURIZED MILK • *Paid*
- ICE CREAM • AND BUTTER •

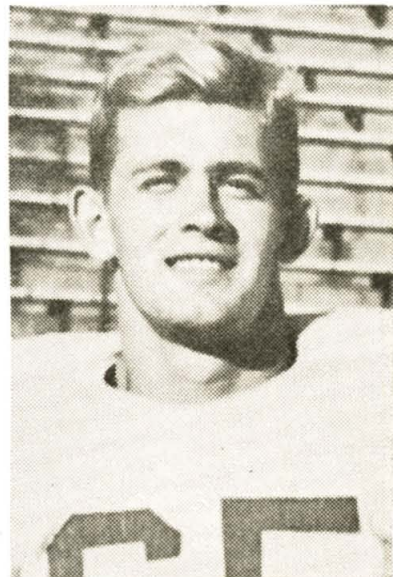
WESTERN'S SOPHOMORES



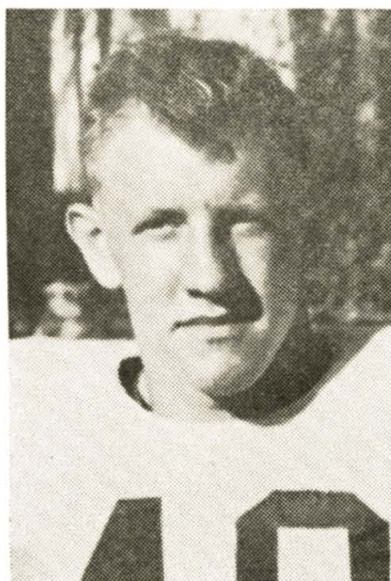
RONNIE HOLZKNECHT—BACK



BILL McKENZIE—TACKLE



HERB HENRY—TACKLE



JACK THORPE—BACK



GEORGE SAUER—GUARD

THE THINKING FELLOW CALLS A YELLOW CAB

Prompt and Courteous Service

YELLOW CAB CO.

U-Drive-It Cars and Trucks Also Available

Dial 3232

AS USUAL OLD FRIENDS
WILL MEET AT THE
UNIVERSITY INN

Steaks And Freezer Fresh Ice Cream
Are Our Specialties

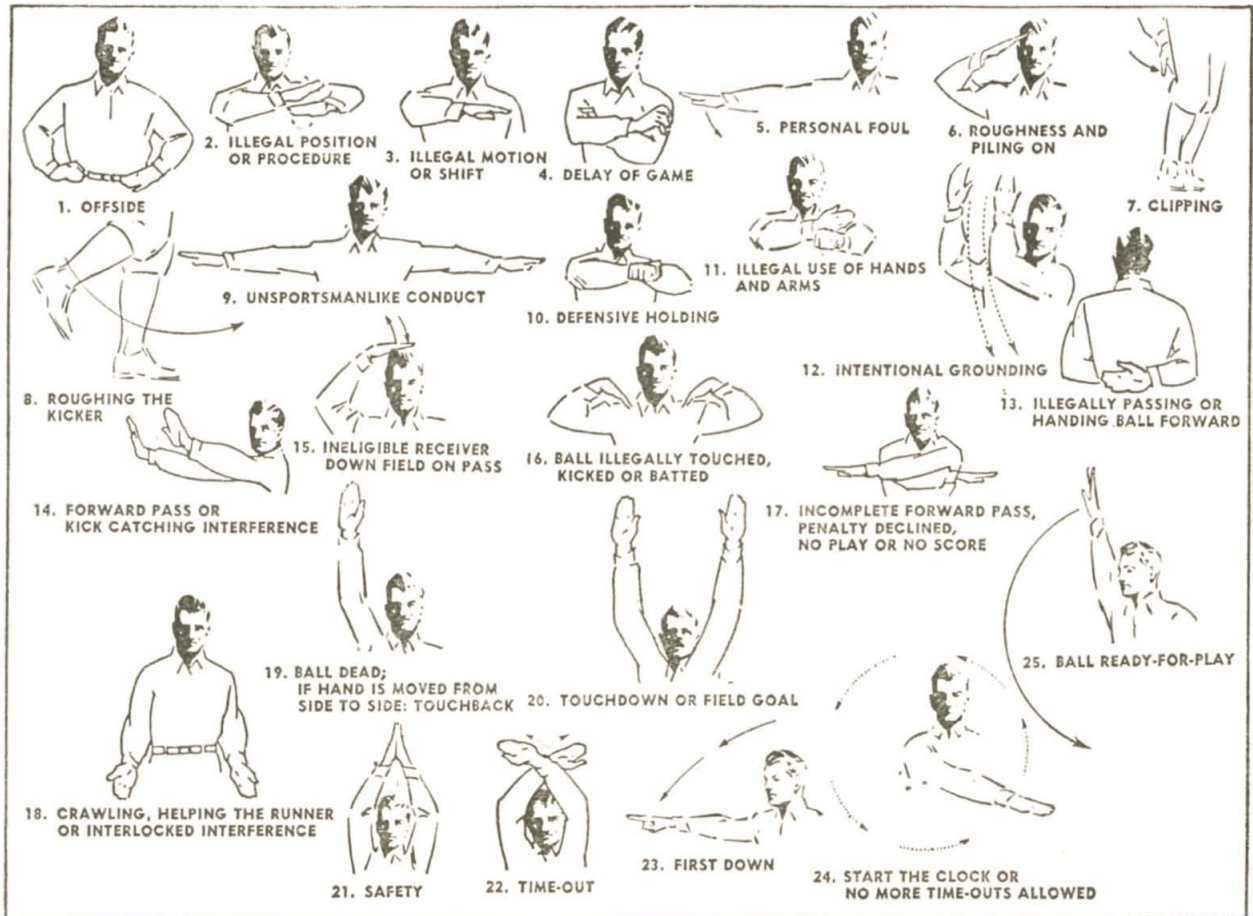
paid GO HILLTOPPERS!
**Garnett Sporting
Goods Co.**

432 10th St.

"Everything For The Athlete"



Dial 8571



paid
Pushin's

"Southern Kentucky's Leading Department Store"

BEST WISHES TO THE ... *paid* **Hilltoppers**

From the

"Kentucky's Best Football Team"

BOWLING GREEN LAUNDRY COMPANY

Dial 5604

"Kentucky's Best Cleaners"

929 Center

Western and Morehead Meet For 10th Time

Morehead's Eagles invade the Western Stadium tonight for the Hilltoppers' third Ohio Valley Conference game of the season and the renewal of a fierce gridiron rivalry begun back in 1939.

Over the past 12 years the two elevens have met nine times. Western has won seven of the clashes, Morehead one and one resulted in a 0-0 tie.

Last year Morehead boasted one of the most powerful early-season teams in the OVC on the basis of lop-sided victories scored over Evansville and Marshall. The aerial attack which Chuck Porter unleashed seemed almost unbeatable after what had happened to the early season opposition.

Western had been tied 7-7 by Evansville and beaten 47-13 by Marshall on successive weekends before the Hilltoppers prepared to invade Morehead for a meeting with Coach Ellis Johnson's aerial circus. The Hilltoppers rated about a 70-point underdog on paper.

Still smarting from that Marshall drubbing the previous week, the Hilltoppers tore into the Eagles right from the opening gun. When the smoke of battle had cleared away Western had performed the impossible and beaten Morehead 23-21.

The two elevens met for the first time back in 1939 on a cold, rainy afternoon in the Western Stadium which saw Western score two lone points in the first quarter. Morehead's Garland Collins let a bad pass from center get away from him and Curly Pitman tackled him in the Eagle end zone. From there on it was a kicking duel between Western's Red Oliver and the Eagles' "Jug" Varney and Collins. Western kicked 21 times for an average of 42 yards per boot and Morehead booted 20 times for an average of 36 yards per try.

The next year at Morehead the two teams fought all over the field ending up in a 0-0 deadlock.

At Ashland in 1941, the Hilltoppers cut loose to win 14-0. The first touchdown to be scored in the three meetings between the two elevens came in the first quarter when Dick Crouch passed to Bob Wilson in the Eagle end zone. The second marker came in the final period when Al Zimmerman intercepted a Morehead aerial and raced

31 yards to score. John Mazola made both extra points.

Back in the Western Stadium in 1942, the two rivals met for the last time until after the war. It was a slam-bang battle for three quarters with Western getting a safety and a touchdown in the final frame to win 9-0.

Hardin Shelby, a freshman back from Clarksville, Tenn., who lost his life in World War II, was the star of that game. He personally accounted for 86 of the 151 yards the Hilltoppers picked up on the ground.

During 1943, '44 and '45 the two schools discontinued football but in 1946 both picked up where they left off in 1942. The only difference was that Western did not dominate as in the first four meetings.

Morehead came back with a roar to break up the myth of having never crossed the Western goal line as the Eagles ran wild to stomp the Hilltoppers 36-7 for the greatest score ever registered in the history of the series. The game was played at Morehead and the victory was especially sweet to the previously scoreless Eagles.

Before the home fans in the Western Stadium in 1947 the Hilltoppers took command again winning 20-6. Pat McNeil, Fred Clayton and Ed Lach were the big guns in the Western attack. The score was tied 6-6 at halftime but Western got a marker in each of the two remaining periods.

It was the same story in 1948 at Morehead although the Eagles were favored to win this one. The Hilltoppers really got their new T-formation operating as Sonny Jones breezed for one touchdown in the opening period and Jim Pickens tossed to Frank Wallheiser for another in the second quarter after Joe Talley had recovered an Eagle fumble.

Morehead was not through, however. A quick marker as the half was ending and another as the second half was opening put the Eagles in front, 14-13. Western recovered and blasted over another touchdown to win 19-14.

Back in the Western Stadium in 1949 the Hilltoppers scored an impressive 19-0 win to maintain Western's mastery over the Eagles. The score does not indicate how rough a battle it was as the Eagles fought right down to the wire just as they always do when playing Western.

Expert Repair Service

"Exclusive Hotpoint Headquarters"

Leachman-Potter Motor Co.

Leachman-Potter Inc.

10th & Center Streets
DODGE - PLYMOUTH
Dial 3255

10th & Center Streets
GOODRICH TIRES
Dial 4308

Harry Leachman

Harry Potter

Biggs Furniture Co.

Main St. Just Off The Square

GO! HILLTOPPERS!! GO!

FELDMANS

431 Park Row

Dial 4542

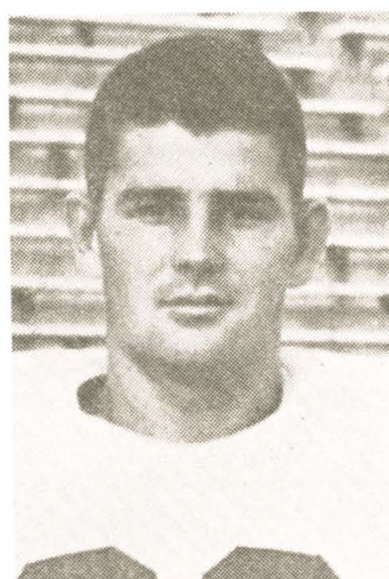
WESTERN'S SOPHOMORES



BILL TATE—END



BOBBY BILYEU—BACK



GENE McFADDEN—BACK

For All Your Needs Come To

HOLLAND DRUG CO.

Dial 9470

100 Main St.

Make The

MANSARD HOTEL

Your Home in Bowling Green

Geo. Williamson, Mgr.

paid

Go Hilltoppers Go! We're For You

Warren County Hardware Company

TELEVISION HEADQUARTERS

Dial 4358

934 State Street

WKCT
NEWS
MUSIC
COVERAGE
Day & Night

Everybody Reads The
Park City Daily News

"First in Southern Kentucky"

WKCT
1,000 WATTS
930
On Your Dial
Day & Night

Good Luck Hilltoppers

Paid

J. C. Penney Co.

Outfitters for the Entire Family

Try Shell Premium
The Most Powerful
Gasoline Your Car
Can Use

U. S. Royal and Seiberling Tires
Oil Heat Specialists

MOBLEY OIL CO., Inc.

Louisville Road

Dial 5205

Paid
Big 7 Furniture Stores

'Quality Furniture For Less Money''

Bowling Green, Kentucky

American National Bank

Safe And Friendly

Since 1886

Carpenter-Dent-Sublett Company

C. D. S. NO. 1
Emory Dukes, Mgr.
401 Park Row

C. D. S. NO. 2
A. R. Douglas, Mgr.
901 Collge Street

C. D. S. NO. 6
Leichhardt Bros., Mgrs.
Main and State Streets

C. D. S. NO. 4
M. A. Vaughn, Mgr.
10th and State Sts.

KIRBY BROTHERS

AMUSEMENT MACHINES — RADIOS
RECORDS

Bowling Green, Ky.

Dial 7525

1148 Center Street

Southern
Kentucky's



Paid
Largest

Diamond Store

Howard Jewelers Inc.

Main Bus Stop On The Square
"It's Easy To Pay The Howard Way"

America's most
popular cigarette



FLAVOR

MILDNESS

