

9-29-1962

## UA19/17/1/4 Football Program - WKU vs Middle Tennessee State University

WKU Athletic Media Relations

Follow this and additional works at: [http://digitalcommons.wku.edu/dlsc\\_ua\\_records](http://digitalcommons.wku.edu/dlsc_ua_records)

---

### Recommended Citation

WKU Athletic Media Relations, "UA19/17/1/4 Football Program - WKU vs Middle Tennessee State University" (1962). *WKU Archives Records*. Paper 786.  
[http://digitalcommons.wku.edu/dlsc\\_ua\\_records/786](http://digitalcommons.wku.edu/dlsc_ua_records/786)

This Other is brought to you for free and open access by TopSCHOLAR®. It has been accepted for inclusion in WKU Archives Records by an authorized administrator of TopSCHOLAR®. For more information, please contact [topscholar@wku.edu](mailto:topscholar@wku.edu).



No 1487

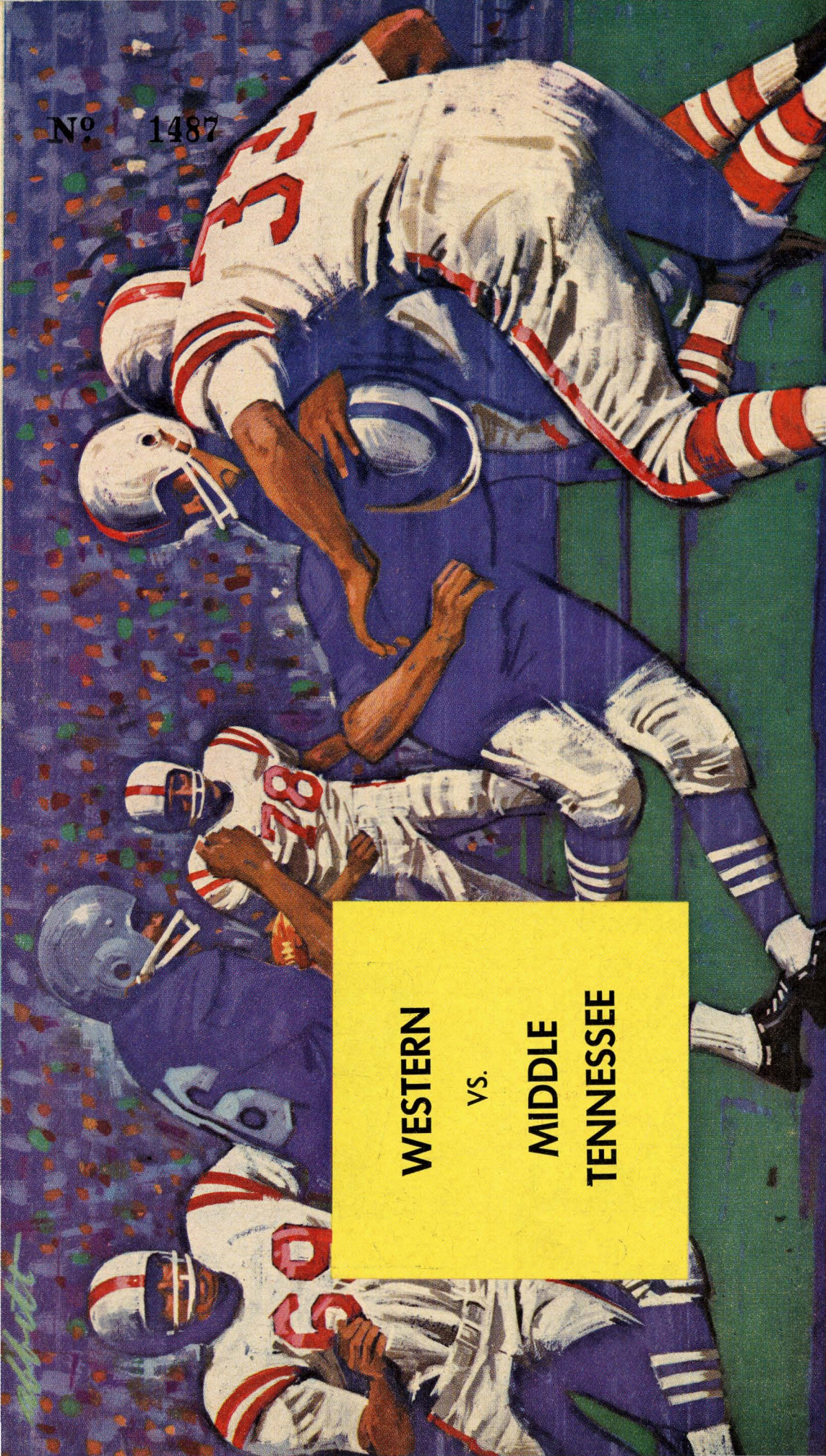
**WESTERN**  
vs.  
**MIDDLE**  
**TENNESSEE**

**SEPTEMBER 29, 1962**

**7:30 P.M.**

**OFFICIAL  
PROGRAM**

**TWENTY FIVE CENTS**





GAS-OIL

Shipleys Standard  
SERVICE STATION

"We Try"

1248 Center

VI 3-9106

It's HERMAN

**Lowe's**

CORNER STATE AND 10TH

FOR **SPORTS**

HARDWARE  
&  
PAINT

BEST OF LUCK TOPPERS

**AMERICAN NATIONAL  
BANK & TRUST CO.**

3 Convenient Locations

922 State St.

437 10th St.

Smiths Grove, Ky.

*Borders*

**PURE MILK  
COMPANY**

"QUALITY TESTED"

MILK—ICE CREAM

**GERARD-BRADLEY**

FUNERAL CHAPEL

EXCLUSIVE  
AMBULANCE  
SERVICE

DISTINCTIVE  
FUNERAL  
SERVICE

319 E. 10th ST.

BOWLING GREEN

COMPLIMENTS OF

**KELLEY OFFICE  
EQUIPMENT CO.**

TYPEWRITERS—SCHOOL SUPPLIES  
PRINTING

436 E. 10th St.

VI 2-2456

Football Fans!

Visit Us For A  
Complete Weekend  
Of Comfort And  
Relaxation

**Holiday  
Inn®**

of Bowling Green, Ky.

31-W By-Pass

Dial 842-9453



Your Host from Coast to Coast®



(This football program is published by the College Heights Herald, Official publication of the Western Kentucky State College Alumni Association)

Represented for National Advertising by SPENCER ADVERTISING COMPANY, INC., 271 Madison Ave., New York City

## Win Over Middle-Tennessee Is A Must Game For Toppers

If Western Kentucky's Hilltoppers are going to make any sort of strong showing in the Ohio Valley Conference football race, they'll have to start their bid tonight.

And, according to a pre-season poll of the league's coaches, they draw the toughest opponent the OVC has to offer—Middle Tennessee State College's Blue Raiders.

The Raiders were picked by the head coaches around the loop as the favorite for the title they missed by one point, a 7-6 loss to arch-rival Tennessee Tech, a year ago.

MTSC has won both its tests so far, defeating Austin Peay in a game that doesn't count in the official league standings, and stopping Morehead last week for a 1-0 OVC record.

Western, on the other hand, was dumped by determined and surprisingly strong East Tennessee squad, 27-7, last Saturday after toppling non-conference Southeast Missouri in the season opener, 28-7.

The Hilltoppers were picked for third in the loop, but the loss right at the outset of the conference slate makes their task a difficult one, indeed.

Next Saturday, October 6, the Hilltoppers will play their first afternoon game at home when they host the Governors of Austin Peay State College from Clarksville, Tennessee. The game should be one of the most colorful of the season as it will be highlighted by the annual gala High School Band Day and the YMCA Cheerleaders Clinic.

The Toppers travel to Cookeville, Tenn., to battle the Tennessee Tech Golden Eagles, on October 13.

Then comes the big day of the season for students and alumni alike, the HOMECOMING BATTLE against Eastern Kentucky State College. Game time is slated for 2:00 p.m.

Western's gridders wind up the season with a pair of away games, one on November 3, against Morehead State College and the finale, with traditional rival, Murray State College on Nov. 10.

### Ferrell's DRIVE-IN

Specializing In

Southern Fried Chicken—Sea Food

Old Russellville Rd. VI 3-8955

Reservations for Special Parties—Clubs etc.

GOOD  PRODUCTS  
"At the Sign of the Orange Disc"

• Gulf Crest • Super No-Nox • Gulfpride Oil

**Gulf Smith & Minton Oil Co.**

800 Power

VI 2-5657

## lois-glyn

912 State Street  
Phone VI 2-5707

The Oldest Beauty Shop  
in the City—with our every  
Service 'You will be delighted'

**One-Hour  
MARTINIZING  
CLEANERS**

We Give Top Value Stamps  
Plus 3-Hour Shirt Laundry  
Fast Service

Dial VI 2-1362

More And More  
Students Are Finding



A Good Place to Shop



# SUNSET INN

★ SEA FOODS ★ CHARCOAL STEAKS ★ BROASTED CHICKEN  
★ PRIME RIBS ★ KOSHER FOODS ★ PIZZA ★ SPAGHETTI

Hours 11 a.m. to 12 p.m.

Phone 834-4676

## CARPENTER-DENT-SUBLETT DRUG COMPANY

Store No. 1  
401 Park Row

Store No. 4  
1002 State St.

Store No. 2  
901 College

Store No. 7  
31-W By-Pass

AMBULANCE SERVICE  
AIR CONDITIONED  
AND  
OXYGEN EQUIPPED  
CADILLAC

## BURGESS-MOODY FUNERAL HOME

512 E. 12th St.

VI 2-5105

## BOWLING GREEN LAUNDRY AND DRY CLEANERS

WE KNOW THE SCORE

Phone VI 2-5604

10th and Center

FOLLOW THE HILLTOPPERS  
At Home And Away Over

## W B G N

Bob Proctor, Sportscaster

913½ College St.

Phone VI 2-1638



See How Super Shell's 9  
Ingredients Can Give YOUR  
Car TOP PERFORMANCE

## BROWNING OIL CO.

"Your Home-Owned Shell Oil Jobber"

Louisville Rd.

VI 2-2454

Quality Petroleum  
Lubricants For  
Every Automotive and  
Industrial Use.



"Where To Buy Them"

## SINCLAIR REFINING CO.

6th St.

Dial VI 2-5848

## WILLIAMS DRUG CO.

"The Prescription Store"

900 State St.

Free Delivery

Phone VI 3-3258

YOU ARE ALWAYS WELCOME HERE

"When You Say It With Flowers  
Say It With Ours"

## COLONY SHOP

31-W By-Pass

Shopping Center

Phone VI 2-1380

## DURBIN'S DEPARTMENT STORE

LADIES' and MEN'S WEAR

923-927 College St.

## TOWN TOWERS

Motor Hotel And Restaurant

Specializing In

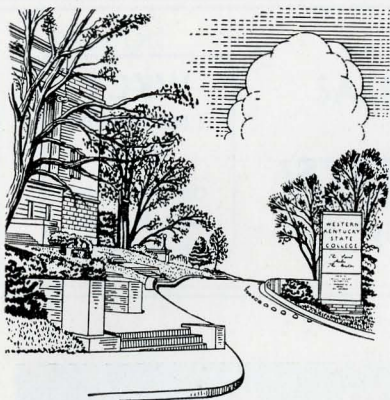
★ CHARCOAL STEAKS ★ CHOPS  
★ FINE SEA FOOD

N. 31-W By-Pass

Phone VI 3-8145

FOOD and LODGING  
for DISCERNING PEOPLE





# WESTERN KENTUCKY STATE COLLEGE

Tradition wealthy Western, located on the crest of the big hill, overlooks the city of Bowling Green, Kentucky, with (concentrated population of 32,000) and a fringe population of several thousand more. The central portion of the campus, known as College Heights, commands an impressive view of the Barren River Valley and surrounding hills. Embracing an area of 141 acres, the college campus has thirty-one beautiful buildings. A farm of 65 acres adjoining the campus provides instructional facilities in agriculture; another farm of 600 acres is maintained for production and research purposes.

Rich in local and state history, Bowling Green was an important center in the early settlement of the western part of the state. In 1861, first year of the Civil War, General Albert Sidney Johnston established headquarters here for the Confederate Army of the West. A battle was fought in Bowling Green, and the city was for a short time the Confederate capital of Kentucky.

The Fort, spawned by General Johnston, was later occupied and held by Union troops. Among its commanders was General Benjamin Harrison, who later became the twenty-third President of the United States. The Fort, now preserved and incorporated into the carefully planned landscape of the campus, remains a highly valued and treasured memorial in the midst of the college grounds.

Conceived in 1906 for the sole purpose of teacher training, Western now offers three undergraduate degrees and the master's degree with course offerings in twenty-four different departments. On June 1, 1961, the Graduate Division began offering graduate curricula leading to advanced certificates for teachers and school leaders based upon the twenty-four hours beyond the master's degree. In addition, pre-professional work leading to entrance in professional and technical colleges for advanced study is also offered.

Now with an enrollment of more than 5,000 students, Western as a co-educational institution, is in the midst of the greatest building program in the history of the college. A six-story dormitory, presently the tallest building in the city, was occupied by women at the beginning of the fall term, and plans for an additional 11-story "skyscraper" dormitory for men and another four-story dormitory for women are well underway. Now under construction is the \$2.9 million dollar Academic-Athletic Building, which will house the E. A. Diddle Arena with a maximum seating capacity of 13,000, plus a smaller gymnasium, swimming pool, thirty master classrooms, and a portable stage. Scheduled for completion by September, 1963, the edifice will be one of the largest of its type in the United States.

The Western stadium, located in a natural setting on the east side of the campus, has a seating capacity of 5,500. Crowned by a majestic colonnade at the top of the stadium, the football arena is one of the most striking attractions on the Western campus.

In addition to football, a complete schedule of intercollegiate athletics is played in basketball, baseball, track, tennis and golf at Western.

PROGRESS at all levels has made EDUCATIONAL EXCELLENCE Western's most important product.

Where opticianary is a pride —  
Not merely a practice



## GLASSES

Prescriptions Filled • Contact Lenses  
Your Glasses or Broken Lenses Duplicated • Distinctive Frame Selection

### TUCKER OPTICAL

934 State Street

## PLAZA **Rexall** PHARMACY PRESCRIPTIONS

FOR PROMPT FREE DELIVERY

DIAL VI 2-1616

FREE PARKING FOR OVER 300 CARS

Owned & Operated By Albert Douglas—John Henry  
3 Blocks From Western Campus—At Cabell Dr.  
PLAZA SHOPPING CENTER—31-W BY-PASS



**WKCT**  
NEWS  
MUSIC  
COVERAGE  
Day & Night

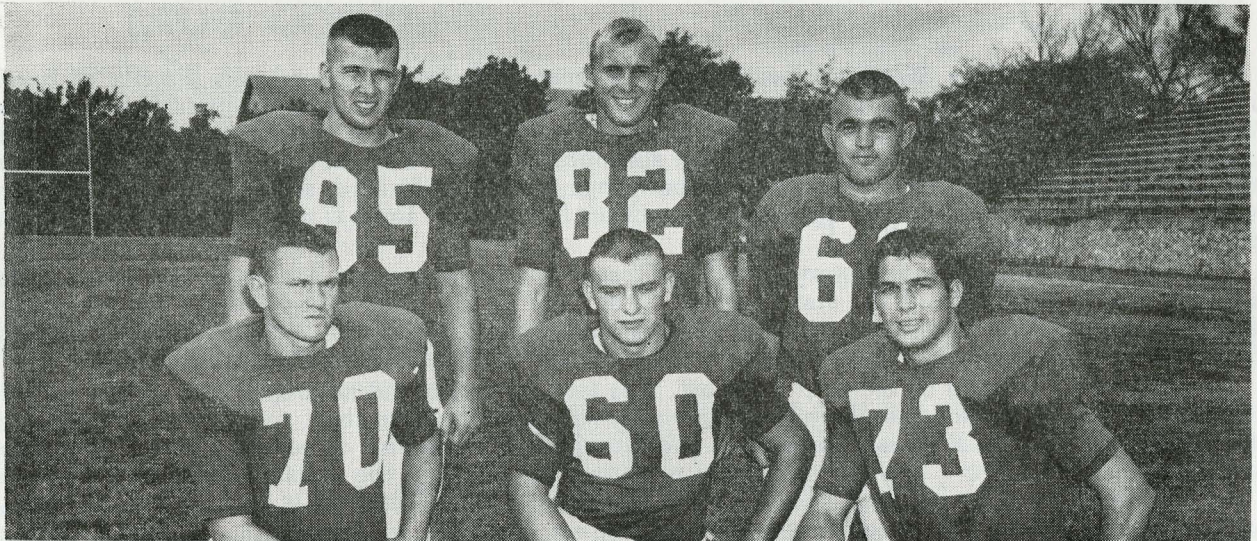
FOR TOP SPORT COVERAGE  
READ THE

# Park City Daily News

"Read By More Than 52,000 People Daily"

**WKCT**  
1,000 WATTS  
930  
On Your Dial  
Day & Night

## HILLTOPPER SENIORS



Kneeling, from left—Barry Poole, John Bariola, and Jim Taylor; Standing, from left — Bill Mumford, Lee Murray and Ollie Newell.

### Freddie's Restaurant

BAR-B-Q—RIBS  
STEAKS—SEA FOODS  
SOUTHERN FRIED CHICKEN

Open 8 a.m. to 12 Midnight  
Phone VI 3-9175

### GOLDEN ——— ———— FARLEY MEN'S AND BOYS' SHOP

"For Those Who Care"

436 Main

VI 2-7939

### ONE STOP CLEANING SERVICE EDGEHILL WASHETTE

and  
DRY CLEANERS

COIN-OP MACHINES—DIAPER SERVICE  
RUSSELLVILLE ROAD "OPEN 24 HOURS"  
PHONE VI 3-3629—2-1282

### SPARKS By-Pass Barber Shop

"We Need Your Head In Our Business"

4 Barbers To Serve You  
Open 8 a.m. to 6 p.m.

Year-round  
31-W By-Pass

Air Conditioning  
VI 2-5105

### KIRTLEY TV & RADIO CO.

HI-FI & STEREOPHONIC  
SERVICE

RCA TV & STEREOS  
RADIO & TV REPAIRS

728 College

VI 2-7300

### THERE'S A ROCKET TO FIT YOUR POCKET!

Quality Built! Quality Sold!  
Quality Serviced!

**Bettsworth Motor Co. Inc.**

1036 State

Dial VI 2-7321



FALCON

THUNDERBIRD

SALES

SERVICE



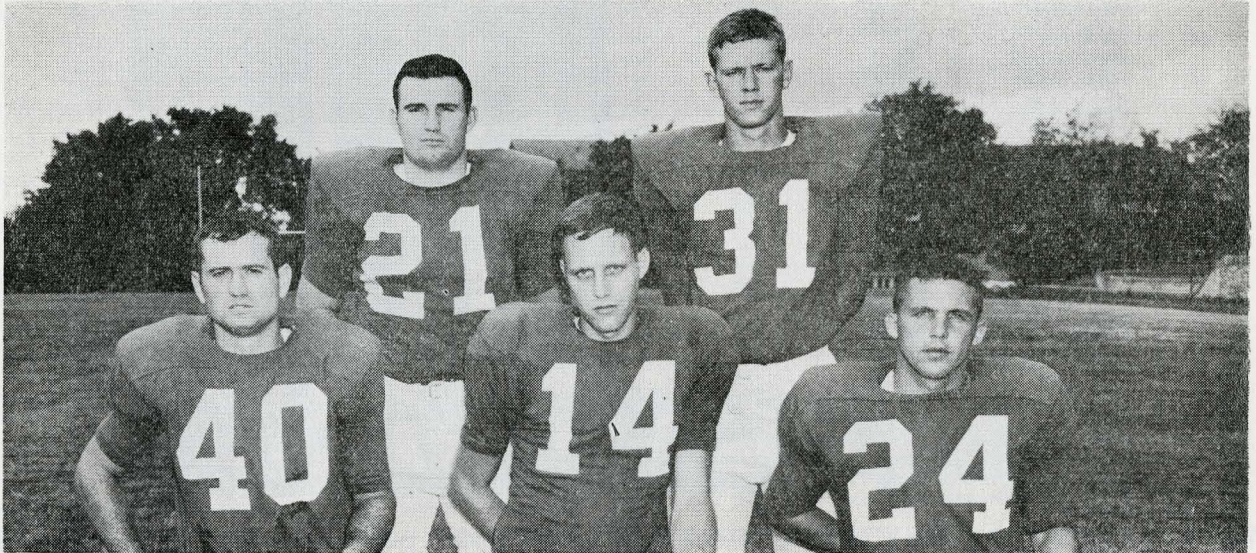
# Wallace Motors, Inc.

601 State St.

'SUPREME SERVICE'

Phone VI 3-9041

## HILLTOPPER SENIORS



Kneeling from left—Buzzy Best, Jim Daily, and Bobby Mitchell; Standing, from left—Lloyd Nash and Joe Jagers.

### GLASSES—CONTACT LENSES

PRESCRIPTIONS FILLED  
FAST ONE DAY SERVICE

### COOKE OPTICIANS

513 East Main

Dial VI 3-6556

ENJOY

### Tom's

MAKE HUNGER A JOY



### TOM'S TOASTED PEANUTS

Old Louisville Rd.

VI 3-6943

★ ★ TREAT ★ ★

Yourselves to HUNT'S Delicious  
BARBECUE PORK, BEEF and BEANS

**Student Special Each Noon—**

Also serving steaks, chops, seafood, short orders.

### HUNT'S ONE STOP

31-W By-Pass

KENTUCKY WILDCATS  
FOOTBALL ON

### RADIO WKCT

Brought To You By



DEALERS

DEALERS

### YELLOW CAB CO.

Dial VI 3-3232

"The Thinking Fellow Rides A Yellow"

817 State St. Bowling Green

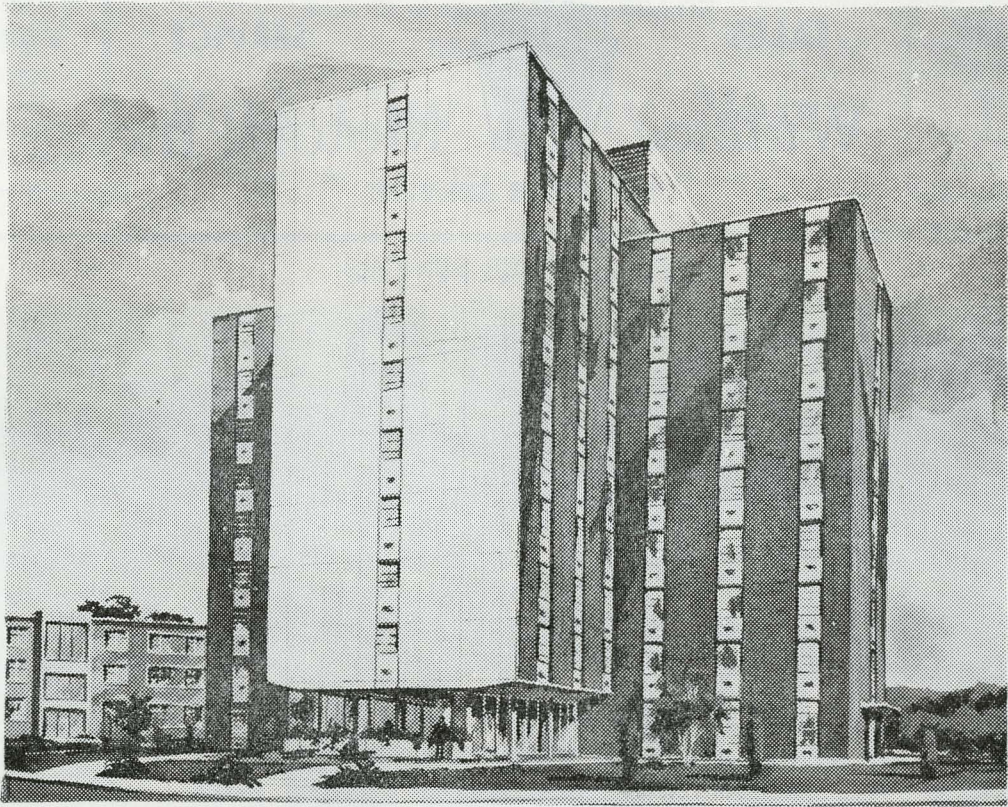
### Hertz U-Drive-It Co.

Dial VI 3-3503

"A Service For Your Convenience"



## 'SKYSCRAPER' MEN'S DORMITORY



WESTERN'S NEW 11-STORY MEN'S DORMITORY now under construction on the old football practice field will be the tallest building in Southern Kentucky and will be built of re-inforced concrete and finished in colonial brick. The contract for its construction was awarded to the Robert C. Crouch Company, Memphis, Tenn., the low bidder with a total construction bid of \$1,197,700. The huge structure will contain bedroom space for 410 men, apartments for the director and assistant director, central elevator service, all necessary supporting auxiliary space and will be fully air-conditioned.

Estimated total cost of the edifice is \$1,300,000. This cost is to include furnishings, landscaping and planting, walkways and utility facilities along with last-minute pre-occupancy details which may come under the category of necessities. Frank Cain, Bowling Green, and Ben Johnson, Owensboro, are the architects.

The dormitory will serve as an anchor for future buildings to be constructed around the eastern sector of the campus in the same architectural motif.

### PAUL RUTLEDGE

WILL MAKE YOUR  
**SENIOR PORTRAITS**

between now and NOV. 21st  
Call Early For Appointment

Located Near Crescent Bowl—VI 2-5048

### NEKI HOKEY

Who knows? It may mean "Hello" or "Good Bye". But we will say "Hello" and give you the "Best Buy" in Laundry.

**Allen's Launderette**

204 Woodford

Dial VI 2-7414

### Harry Leachman Motors

**BUICK—RAMBLER**

Guaranteed Used Cars

10th and Center

Phone VI 3-3255

### Deemer's Flowers

Corsages—Cut Flowers

'MUMS for the GAME'

Flowers By Wire

'Your Student Florist'

861 Fairview

Phone VI 3-4334



# BOWLING GREEN BANK and TRUST CO.

Complete Banking—Trust Service

Main Office  
903 College St.

Branch Office  
31-W By-Pass

## WESTERN KENTUCKY 1962 HILLTOPPER FOOTBALL ROSTER

| No. | Name             | Pos. | Ht.  | Wt. | Age | Class | Home Town              |
|-----|------------------|------|------|-----|-----|-------|------------------------|
| 10  | William Straub   | QB   | 5-7  | 175 | 22  | Jr.   | Fort Thomas, Ky.       |
| 11  | Sharon Miller    | QB   | 5-11 | 160 | 19  | Soph. | Mt. Carmel, Ill.       |
| 14  | Jim Daily        | QB   | 6-4  | 180 | 22  | Sr.   | New Albany, Ind.       |
| 20  | Woody Barwick    | HB   | 5-11 | 175 | 22  | Sr.   | Oak Ridge, Tenn.       |
| 21  | Lloyd Nash       | FB   | 5-10 | 190 | 21  | Sr.   | Owensboro, Ky.         |
| 22  | Carson Culler    | HB   | 5-10 | 170 | 21  | Jr.   | Garrett, Ind.          |
| 24  | Larry Johnson    | HB   | 5-10 | 180 | 18  | Fr.   | Russellville, Ky.      |
| 25  | Bobby Mitchell   | HB   | 5-7  | 165 | 21  | Sr.   | Oak Ridge, Tenn.       |
| 30  | Jim Burt         | HB   | 6-3  | 190 | 19  | Soph. | Fort Thomas, Ky.       |
| 31  | Joe Jagers       | FB   | 6-0  | 185 | 22  | Sr.   | Princeton, Ky.         |
| 33  | John Burt        | FB   | 5-11 | 180 | 20  | Fr.   | Fort Thomas, Ky.       |
| 35  | Dave Peak        | FB   | 5-11 | 190 | 20  | Soph. | Louisville, Ky.        |
| 40  | Buzzy Best       | HB   | 6-0  | 190 | 22  | Sr.   | Elizabethtown, Ky.     |
| 43  | Sam Clark        | HB   | 5-11 | 165 | 19  | Soph. | Tompkinsville, Ky.     |
| 50  | Thomas Murrell   | C    | 6-0  | 215 | 19  | Soph. | Mt. Lebanon, Ohio      |
| 52  | Gary Kelley      | C    | 5-11 | 205 | 20  | Jr.   | Cleveland, Tenn.       |
| 54  | Bob Westmoreland | C    | 6-1  | 225 | 22  | Jr.   | Celina, Tenn.          |
| 60  | John Bariola     | G    | 6-0  | 200 | 22  | Sr.   | Moorhead, Miss.        |
| 61  | Ollie Newell     | G    | 5-8  | 185 | 22  | Sr.   | Point Pleasant, W. Va. |
| 63  | Ed Crum          | G    | 5-11 | 205 | 20  | Soph. | Louisville, Ky.        |
| 64  | Kenneth Frick    | G    | 6-0  | 200 | 20  | Soph. | Fern Creek, Ky.        |
| 65  | Joseph Bugel     | G    | 6-1  | 215 | 23  | Sr.   | Munhall, Pa.           |
| 66  | Fred Miller      | G    | 6-1  | 200 | 22  | Jr.   | Louisville, Ky.        |
| 67  | Robert Holman    | G    | 6-0  | 190 | 19  | Jr.   | Louisville, Ky.        |
| 70  | Barry Poole      | T    | 6-0  | 205 | 21  | Sr.   | Madisonville, Ky.      |
| 71  | Harold Chambers  | T    | 6-3  | 230 | 23  | Jr.   | Danville, Ky.          |
| 72  | Robert Gephart   | T    | 6-3  | 225 | 22  | Jr.   | Louisville, Ky.        |
| 73  | Jim Taylor       | T    | 6-2  | 200 | 22  | Sr.   | Clarksville, Tenn.     |
| 75  | Walter Hawkins   | C    | 6-0  | 220 | 22  | Jr.   | Elizabethtown, Ky.     |
| 77  | Paul Finneseth   | T    | 6-1  | 220 | 22  | Jr.   | Fort Thomas, Ky.       |
| 80  | Kenneth Waller   | E    | 6-1  | 190 | 20  | Soph. | Jeffersonville, Ind.   |
| 81  | Stan Napper      | E    | 6-2  | 195 | 20  | Soph. | Owensboro, Ky.         |
| 82  | Lee Murray       | E    | 6-1  | 185 | 21  | Sr.   | Russellville, Ala.     |
| 83  | Glenn Blackburn  | QB   | 5-10 | 170 | 20  | Soph. | Greenville, Ky.        |
| 85  | Bill Mumford     | E    | 5-11 | 180 | 21  | Sr.   | Troy, Ohio             |
| 86  | Ken Smith        | E    | 6-0  | 185 | 20  | Soph. | Louisville, Ky.        |
|     | John Baird       | HB   | 6-0  | 180 | 18  | Fr.   | Mt. Carmel, Ill.       |
|     | Jeff Green       | T    | 6-4  | 200 | 19  | Soph. | Highland Park, Ill.    |
|     | Douglas Moore    | T    | 6-0  | 185 | 18  | Fr.   | Fort Thomas, Ky.       |
|     | Elmer Murray     | FB   | 5-11 | 190 | 18  | Fr.   | Russellville, Ala.     |
|     | William Montford | HB   | 5-11 | 185 | 18  | Fr.   | Fort Thomas, Ky.       |
|     | Jim Meyer        | T    | 6-3  | 210 | 19  | Fr.   | Evansville, Ind.       |
|     | Jerry Matthews   | E    | 6-0  | 190 | 18  | Fr.   | Athens, Ga.            |
|     | Jerry Perry      | E    | 6-0  | 185 | 18  | Fr.   | Elizabethtown, Ky.     |
|     | Woodrow Simmons  | C    | 6-5  | 215 | 18  | Fr.   | Glasgow, Ky.           |
|     | Robert Taylor    | G    | 5-11 | 185 | 18  | Fr.   | Athens, Ga.            |
|     | James Thompson   | G    | 6-1  | 225 | 19  | Fr.   | Temple Hill, Ky.       |
|     | Don Ansert       | HB   | 5-11 | 155 | 18  | Fr.   | Louisville, Ky.        |
|     | Dossie Hutchins  | G    | 6-0  | 190 | 20  | Fr.   | Russellville, Ala.     |
|     | Jim Medley       | QB   | 6-0  | 170 | 19  | Soph. | Louisville, Ky.        |
|     | Dave Schalk      | E    | 6-0  | 185 | 19  | Soph. | Louisville, Ky.        |

EVERY LAUNDRY AND DRY CLEANING SERVICE FOR THE STUDENT

MAIN PLANT  
1122-24 CENTER ST.

# McFarland's

BRANCH OFFICE  
THIRD & COLLEGE

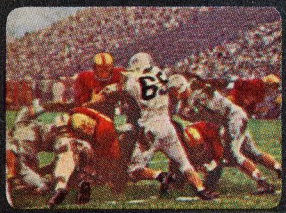
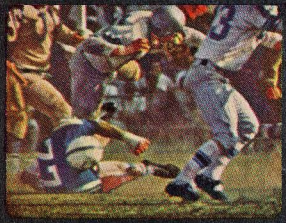
CLEANERS — LAUNDRY

PHONE VI 3-4301



# ZING!

with



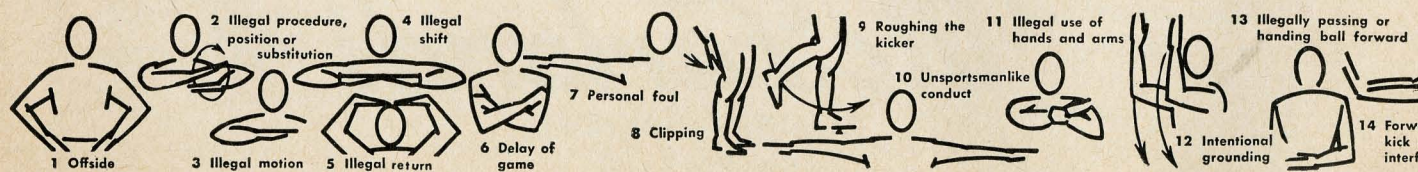
## Western's Probable Starting Line-Up

- 82 Lee Murray .....LE
- 77 Paul Finneseth .....LT
- 65 Joseph Bugel .....LG
- 54 Bob Westmoreland .....C
- 60 John Bariola .....RG
- 73 Jim Taylor .....RT
- 85 Bill Mumford .....RE
- 14 Jim Daily .....QB
- 30 Jim Burt .....RH
- 22 Carson Culler .....RH
- 33 John Burt .....FB

- |                 |              |            |
|-----------------|--------------|------------|
| 10 Straub       | 60 Bariola   | 85 Mumford |
| 11 Miller       | 61 Newell    | 86 Smith   |
| 14 Daily        | 63 Crum      | Baird      |
| 20 Barwick      | 64 Frick     | Green      |
| 21 Nash         | 65 Bugel     | Moore      |
| 22 Culler       | 66 Miller    | Murray     |
| 24 Johnson      | 67 Holman    | Monford    |
| 25 Mitchell     | 70 Poole     | Meyer      |
| 30 Burt, Jim    | 71 Chambers  | Matthews   |
| 31 Jagers       | 72 Gephart   | Perry      |
| 33 Burt         | 73 Taylor    | Simmons    |
| 35 Peak         | 75 Hawkins   | Taylor     |
| 40 Best         | 77 Finneseth | Thompson   |
| 43 Clark        | 80 Waller    | Ansert     |
| 50 Murrell      | 81 Napper    | Hutchins   |
| 52 Kelley       | 82 Murray    | Medley     |
| 54 Westmoreland | 83 Blackburn | Schalk     |

### OFFICIALS

Referee: John Duval (Vanderbilt). Umpire: Bill Pack (Tullahoma, Tenn.). Head Linesman: James Miller (Clemson). Field Judge: George W. Babb (University of Tennessee). Clock Operator: Dick Garrison. Scoreboard Operator: Lisle Sherrill.





# Enjoy that **REFRESHING** **NEW FEELING** with **COKE**

TRADE-MARK ®



## Middle Tenn. Probable Starting Line-Up

|    |                 |         |
|----|-----------------|---------|
| 82 | George Dykes    | .....LE |
| 70 | Jack Armstrong  | .....LT |
| 60 | Ronnie Camp     | .....LG |
| 50 | Billy Joe Evans | .....C  |
| 64 | Joe Drennan     | .....RG |
| 77 | Wayne Winters   | .....RT |
| 86 | Bill Settle     | .....RE |
| 18 | Louie Alford    | .....QB |
| 22 | Jim Harvey      | .....LH |
| 23 | Charles Rice    | .....RH |
| 42 | Phil Grammer    | .....FB |

|    |               |    |              |    |            |
|----|---------------|----|--------------|----|------------|
| 10 | Kerr, QB      | 44 | Hobbs, FB    | 72 | Hayes, T   |
| 14 | Morris, QB    | 46 | Petty, FB-HB | 73 | Pierce, T  |
| 16 | Donnelly, E   | 50 | Evans, C     | 74 | Blair, T   |
| 18 | Alford, QB    | 52 | Geren, C     | 75 | Short, T   |
| 20 | Boles, HB     | 54 | George, C    | 76 | Gupton, T  |
| 22 | Harvey, HB    | 56 | Matusek, C   | 77 | Winters, T |
| 23 | Rice, HB      | 60 | Camp, G      | 78 | Smith, T   |
| 24 | Donoho, HB    | 61 | Brown, G     | 80 | Allen, E   |
| 25 | Pope, HB      | 62 | Karabasz, G  | 82 | Dykes, E   |
| 26 | Pickel, HB    | 63 | Pigue, G     | 83 | Yeaman, E  |
| 27 | Myrick, HB    | 64 | Drennan, G   | 84 | Haley, E   |
| 28 | Broadbent, HB | 65 | Leahon, G    | 85 | Smith, E   |
| 29 | Harris, HB    | 66 | Clayborne, G | 86 | Settle, E  |
| 40 | Geary, FB     | 67 | Atchley, G   | 88 | Hill, E    |
| 42 | Grammer, FB   | 70 | Armstrong, T | 89 | Whaley, E  |



Bowling Green Coca-Cola Bottling Works,  
Bowling Green, Kentucky

5 Ineligible receiver  
downfield on pass

17 Incomplete forward pass,  
penalty declined, no play  
or no score

18 Helping runner or  
interlocked interference

19 Ball dead;  
if hand is moved  
from side to side:  
touchback

22 Time-out

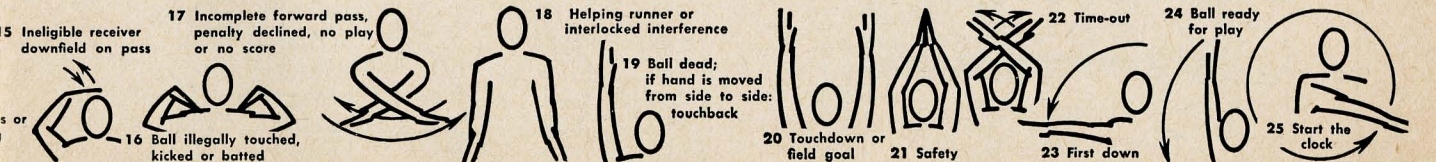
24 Ball ready  
for play

25 Start the  
clock

20 Touchdown or  
field goal

21 Safety

23 First down





AGAIN—ALL WESTERN FOOTBALL GAMES  
BROADCAST BY BUD TYLER AND JIM PICKENS

5000 Watts

**WLBJ**

1410 K. C.

VI 3-3212

First In Bowling Green

VI 3-3212

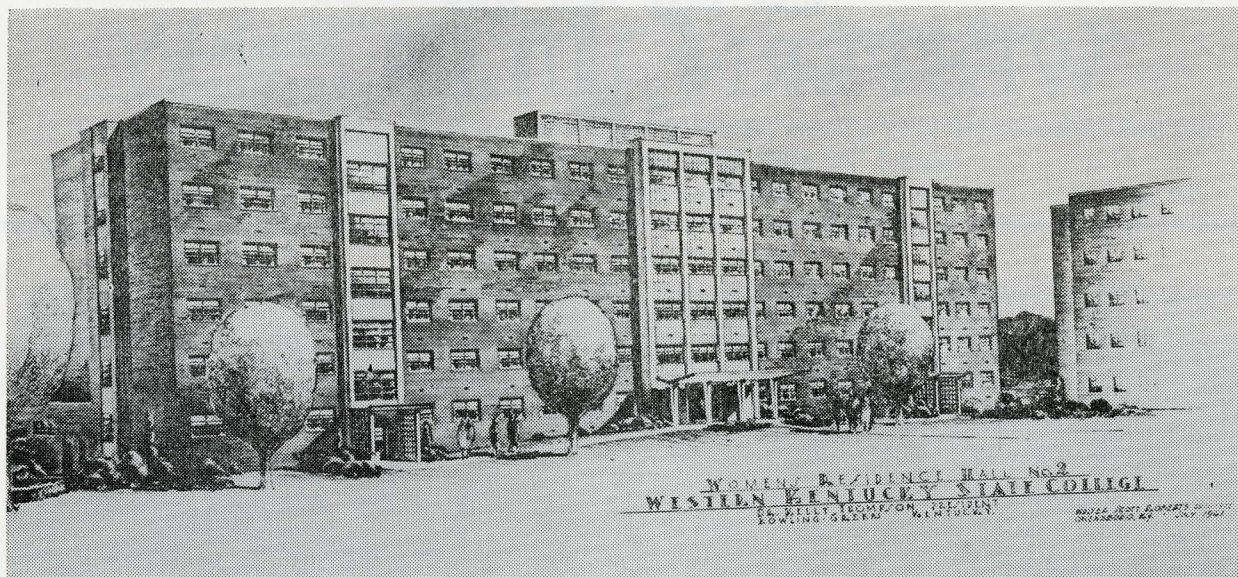
*The Most Powerful Radio Station In Southern And Western Kentucky*

## MIDDLE TENNESSEE STATE COLLEGE 1962 FOOTBALL ROSTER

| No.                   | Player          | Class | Ht.    | Wt. | Age | Ltr. | Hometown             |
|-----------------------|-----------------|-------|--------|-----|-----|------|----------------------|
| <b>(QUARTERBACKS)</b> |                 |       |        |     |     |      |                      |
| 10                    | Bob Kerr        | Jr.   | 6'1"   | 175 | 21  | 0    | Chapel Hill, Tenn.   |
| 14                    | Ted Morris      | Fr.   | 5'11"  | 170 | 18  | 0    | Murfreesboro, Tenn.  |
| 18                    | Louis Alford    | Soph. | 6'0"   | 185 | 20  | 0    | Cleveland, Tenn.     |
| <b>(HALFBACKS)</b>    |                 |       |        |     |     |      |                      |
| 20                    | Maxie Boles     | Fr.   | 5'8"   | 165 | 20  | 0    | Huntsville, Ala.     |
| 22                    | Jim Harvey      | Soph. | 5'10"  | 170 | 20  | 1    | Lenoir City, Tenn.   |
| 23                    | Charles Rice    | Sr.   | 5'10½" | 175 | 22  | 2    | Nashville, Tenn.     |
| 24                    | Glen Donoho     | Fr.   | 5'10½" | 165 | 18  | 0    | LaFayette, Tenn.     |
| 25                    | Jackie Pope     | Jr.   | 5'8"   | 165 | 21  | Trf  | Oak Ridge, Tenn.     |
| 26                    | Don Pickel      | Soph. | 5'11"  | 180 | 20  | 0    | Pigeon Forge, Tenn.  |
| 27                    | Ronnie Myrick   | Fr.   | 5'8"   | 160 | 21  | 0    | Marietta, Ga.        |
| 28                    | Jerry Broadbent | Fr.   | 5'8"   | 155 | 18  | 0    | Nashville, Tenn.     |
| 29                    | Earl Harris     | Soph. | 5'10"  | 170 | 20  | 0    | Chapel Hill, Tenn.   |
| <b>(FULLBACKS)</b>    |                 |       |        |     |     |      |                      |
| 40                    | Don Geary       | Fr.   | 5'11"  | 180 | 19  | 0    | Nashville, Tenn.     |
| 42                    | Phil Grammer    | Jr.   | 5'10"  | 180 | 21  | 2    | Nashville, Tenn.     |
| 44                    | Bill Hobbs      | Jr.   | 5'10"  | 205 | 21  | 1    | Whitwell, Tenn.      |
| 46                    | David Petty     | Soph. | 5'11"  | 190 | 20  | 0    | Gainesboro, Tenn.    |
| <b>(CENTERS)</b>      |                 |       |        |     |     |      |                      |
| 50                    | Billy Joe Evans | Sr.   | 6'0"   | 210 | 21  | 3    | Lynchburg, Tenn.     |
| 52                    | Vern Green      | Fr.   | 5'11"  | 190 | 18  | 0    | Cleveland, Tenn.     |
| 54                    | Mickey George   | Soph. | 5'9"   | 190 | 19  | 0    | Decherd, Tenn.       |
| 56                    | Tony Matusek    | Sr.   | 6'1"   | 205 | 22  | 1    | Hixson, Tenn.        |
| <b>(GUARDS)</b>       |                 |       |        |     |     |      |                      |
| 60                    | Ronnie Camp     | Soph. | 6'0"   | 200 | 21  | 1    | Marietta, Ga.        |
| 61                    | Duane Brown     | Soph. | 5'10"  | 195 | 20  | 1    | Nashville, Tenn.     |
| 62                    | Vic Karabas     | Sr.   | 6'2"   | 195 | 24  | Trf  | Nashville, Tenn.     |
| 63                    | Eddie Pigue     | Soph. | 5'10"  | 182 | 21  | 1    | Nashville, Tenn.     |
| 64                    | Joe Drennan     | Sr.   | 5'11"  | 200 | 22  | 3    | Nashville, Tenn.     |
| 65                    | Larry Leahon    | Soph. | 5'11"  | 200 | 20  | 1    | Largo, Fla.          |
| 66                    | L. E. Clayborne | Soph. | 6'1"   | 205 | 20  | 0    | LaFayette, Tenn.     |
| 67                    | Keith Atchley   | Fr.   | 5'11"  | 190 | 19  | 0    | Sevierville, Tenn.   |
| <b>(TACKLES)</b>      |                 |       |        |     |     |      |                      |
| 70                    | Jack Armstrong  | Soph. | 6'1"   | 215 | 20  | 1    | Sevierville, Tenn.   |
| 72                    | Gerald Hayes    | Jr.   | 6'3"   | 210 | 22  | 1    | LaFayette, Ga.       |
| 73                    | Ron Pierce      | Fr.   | 6'6½"  | 230 | 18  | 0    | Carthage, Tenn.      |
| 74                    | David Blair     | Jr.   | 6'0"   | 205 | 21  | 0    | Columbia, Tenn.      |
| 75                    | Calvin Short    | Jr.   | 6'0"   | 210 | 21  | 1    | Joelton, Tenn.       |
| 76                    | Charles Gupton  | Jr.   | 6'2"   | 235 | 22  | 0    | White's Creek, Tenn. |
| 77                    | Wayne Winters   | Sr.   | 6'2"   | 235 | 23  | 2    | Joelton, Tenn.       |
| 78                    | Howard Smith    | Jr.   | 5'10"  | 220 | 22  | 1    | Murfreesboro, Tenn.  |
| <b>(ENDS)</b>         |                 |       |        |     |     |      |                      |
| 16                    | James Donnelly  | Fr.   | 5'10"  | 185 | 19  | 0    | Nashville, Tenn.     |
| 80                    | Jerry Allen     | Soph. | 6'2"   | 195 | 19  | 0    | Sparta, Tenn.        |
| 82                    | George Dykes    | Jr.   | 6'3"   | 200 | 22  | 1    | Oak Ridge, Tenn.     |
| 83                    | Scotty Yeaman   | Fr.   | 6'4"   | 185 | 18  | 0    | Carthage, Tenn.      |
| 84                    | Bobby Haley     | Fr.   | 6'1"   | 180 | 19  | 0    | Nashville, Tenn.     |
| 85                    | Jerry Smith     | Fr.   | 6'0"   | 180 | 18  | 0    | Shelbyville, Tenn.   |
| 86                    | Bill Settle     | Jr.   | 6'2"   | 195 | 22  | 2    | Nashville, Tenn.     |
| 88                    | Gray Hill       | Fr.   | 6'3"   | 195 | 19  | 0    | Shelbyville, Tenn.   |
| 89                    | Gary Whaley     | Jr.   | 5'11"  | 170 | 20  | 2    | Pigeon Forge, Tenn.  |



## SIX-STORY RESIDENCE HALL FOR WOMEN



Another progressive step in Western's building program was culminated this year with the completion in August of a new six-story residence hall for women and its occupancy by 404 students at the opening of the fall term. The new \$1,284,400 dormitory, a brick and stone structure, is the first of three women's residence halls planned for construction between the Kentucky Building and the college heating plant.

The six story dormitory will serve as the anchor for three sides of a quadrangle, the fourth side being left open to the Russellville Road. Eventually located at right angles to the six-story dormitory will be two smaller, four-story dorms, each of which will house 200 women students.

### *Complete Beauty Service*

Complete Line of Ex-Cel-Cis Cosmetics

- We Specialize in Hair Coloring

Open Evenings—Mon., Tue., Thurs., Fri.

By Appointment

### **BROADWAY BEAUTY SALON**

929 Broadway

VI 3-3214

### **ALLEN'S SHOES**

FLATS—TENNIS—DRESS

At Popular Prices

Sizes AAAA to B

433 Park Row

Phone VI 2-3406

Before and After the Game Meet  
Your Friends At The

### **DIXIE CAFE**

- Pizza ● Spaghetti ● Charcoal Steaks
- Seafood ● Plate Lunches

Open 'til 12 P.M.

On the Square Downtown Bowling Green

STUDENTS CLEANING AND LAUNDRY  
CENTER

### *Thrifty*

**DRY CLEANERS**

220 13th St.

VI 3-3066

### *Holland's Pharmacy*

SERVICE — SATISFACTION

PURITY

ACCURACY

31-W By-Pass

### **LEON'S**

★ On Park Row ★

Your Fashion Store

In Bowling Green

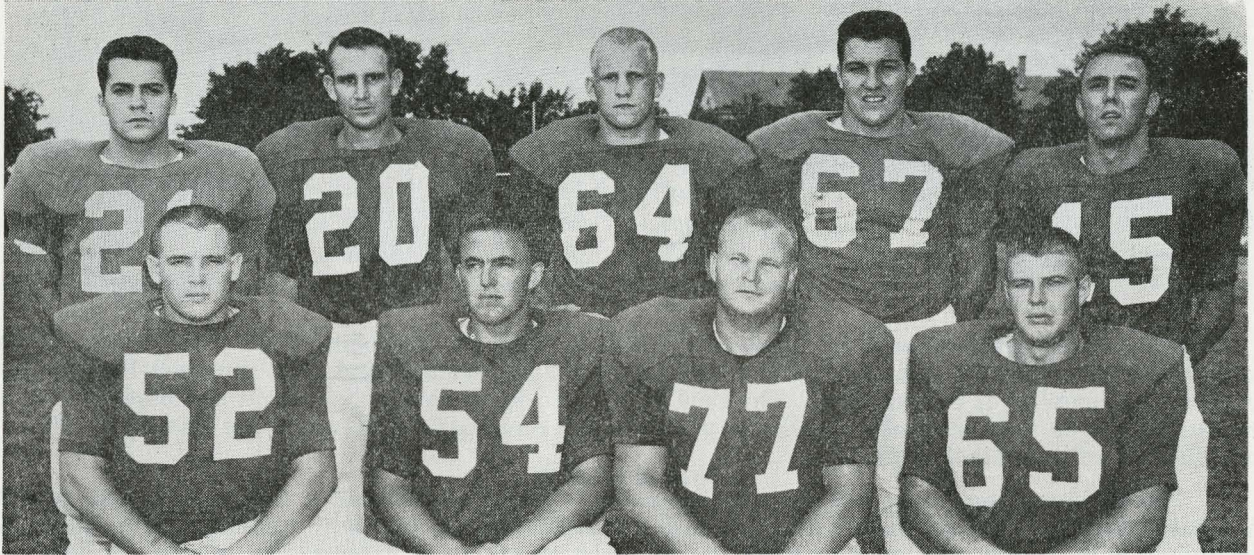


MAKE WESTERN HILLS RESTAURANT AND MOTEL YOUR  
HOME AWAY FROM HOME

# WESTERN HILLS MOTEL AND RESTAURANT

TEMPTING FOODS  
JUST WEST OF THE CAMPUS  
BOWLING GREEN'S FINEST MOTEL/RESTAURANT

## HILLTOPPER JUNIORS



Kneeling, from left—Gary Kelley, Bobby Westmoreland, Paul Finneseth, and Joe Bugel; Standing, from left—Nick Zercios, Woody Barwick, Kenneth Frick, Bob Holman, and William Straub.

### Smart Shoppers Go to Thrifty Dress Shop

915 College—Dial VI 3-9878

- Suits • Coats • Dresses • Lingerie
- Sportswear • Gloves • Hosiery

### Reynold's Nursing Home

featuring REGISTERED NURSE

- 24 Hr. Service • Physician On Call
  - Excellent Food • Refined Atmosphere
- Private and Semi-Private Rooms

1146 Center

VI 3-3638



926 E. 10th St. Dial 842-0149 or VI 3-8383

Get the best in Dry Cleaning and Laundry

Exclusive Women's Apparel And

# Fashion House

1021 Broadway

Dial VI 2-1542

## National Stores

"Two Stores on the Square"

Store No. 1—427-429 Park Row

Store No. 2—907 College St.

Bowling Green, Ky.

MORE MEN AND BOYS WEAR  
FRUIT OF THE LOOM THAN  
ANY OTHER BRAND

## UNION UNDERWEAR COMPANY

900 Church St.

Bowling Green, Ky.



# W L T V

CHANNEL

# 13

Bowling Green, Ky.

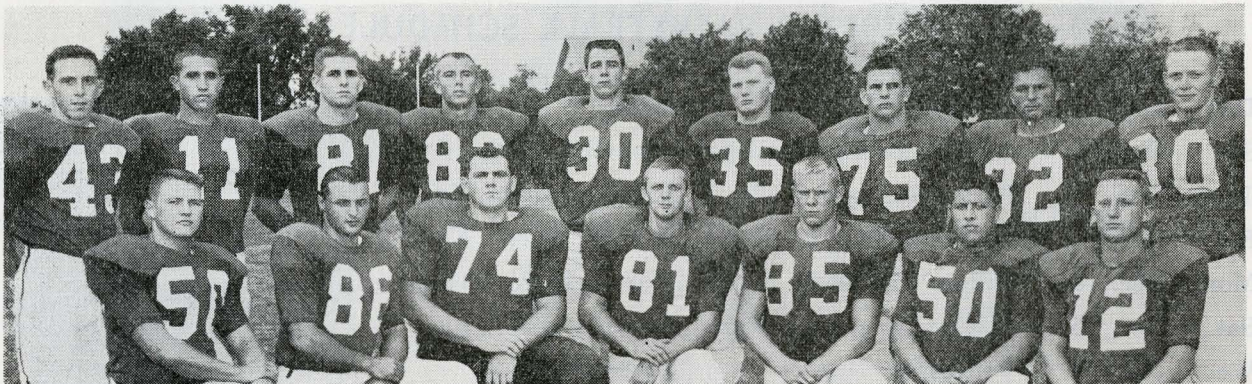
LIVE LOCAL and AREA SHOWS — featuring — SYNDICATED NETWORK SHOWS  
Complete Viewing Coverage of 178,000 TV Homes

Dial 842-0338

P.O. Box 15

Dial 842-9471

## HILLTOPPER SOPHOMORES



Kneeling, from left—Tom Murrell, Tom Carboti, John Hopper, Stan Napper, Jeff Green, Walter Hawkins, and Jim Medley. Standing, from left—Sam Clark, Sharon Miller, Jim Wilder, Glenn Blackburn, Jim Burt, Clarence Peak, Ed Crum, David Corbett, and Ken Waller.

## KENTUCKY TIRE EXCHANGE

"COME VISIT OUR NEW LOCATION"

1st & College

VI 3-6353



Come See The Newest And Most Complete  
Sportswear Department In Bowling Green  
On The Square Dial VI 2-7522

## PEARSON DRUG COMPANY

FREE DELIVERY

Corner Main & College  
Phone 843-9058

## STATE FARM MUTUAL

Auto—Life—Fire Insurance  
Rock Bottom Rates—7000 Agents  
In U.S. and Canada

|             |             |          |
|-------------|-------------|----------|
| T. A. FAXON | 508 E. MAIN | 842-0154 |
| J. A. MOSS  | 871 B'WAY   | 842-2272 |
| RAY THOMAS  | 871 B'WAY   | 242-2272 |

RABOLD has 'em——  
Nationally Advertised Men's Wear  
SHOES—CLOTHING—HATS  
Big Showing of  
Sweaters—Pants—Raincoats

## RABOLD'S

MAIN ST.  
ON THE SQUARE



Ray—Downing—Oldham



# DOLLAR GENERAL STORE

BOWLING GREEN'S MOST UNUSUAL STORE

'Where Students Can Buy At Discount Prices'

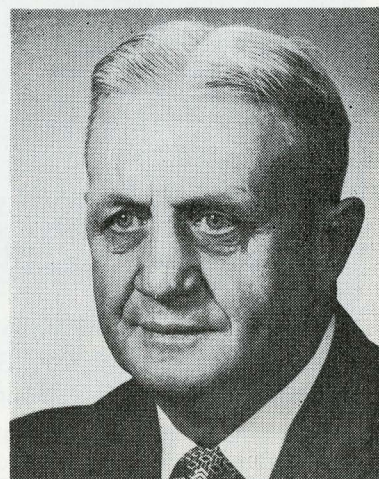
316 East Main St.

"We Have Everything"

Phone VI 2-7827

## FOLLOW YOUR HILLTOPPERS ON THE HARDWOOD 1962-63 BASKETBALL SCHEDULE

| Day       | Date        | Opponent                               | Place               |
|-----------|-------------|--|---------------------|
| Sat.      | Dec. 1      | David Lipscomb College                 | Nashville, Tenn.    |
| Tues.     | Dec. 4      | Texas Wesleyan College                 | Bowling Green, Ky.  |
| Fri.      | Dec. 7      | Southwestern La. Univ.                 | Bowling Green, Ky.  |
| Mon.      | Dec. 10     | *Middle Tennessee State                | Murfreesboro, Tenn. |
| Sat.      | Dec. 15     | Bowling Green (O) Univ.                | Bowling Green, Ky.  |
| Wed.      | Jan. 2      | Vanderbilt Univ.                       | Nashville, Tenn.    |
| Sat.      | Jan. 5      | *Eastern Kentucky State                | Bowling Green, Ky.  |
| Tues.     | Jan. 8      | *Tennessee Tech                        | Cookeville, Tenn.   |
| Sat.      | Jan. 12     | *Murray State                          | Bowling Green, Ky.  |
| Mon.      | Jan. 14     | Southern Illinois Univ.                | Bowling Green, Ky.  |
| Thurs.    | Jan. 17     | *Morehead State                        | Morehead, Ky.       |
| Sat.      | Jan. 26     | La Salle College                       | Bowling Green, Ky.  |
| Wednesday | January 30  | University of Louisville, Freedom Hall | Louisville, Ky.     |
| Saturday  | February 2  | *Tennessee Tech                        | Bowling Green, Ky.  |
| Tuesday   | February 5  | *Morehead State                        | Bowling Green, Ky.  |
| Saturday  | February 9  | *East Tennessee State                  | Johnson City, Tenn. |
| Tuesday   | February 12 | *Middle Tennessee State                | Bowling Green, Ky.  |
| Saturday  | February 16 | *Murray State                          | Murray, Ky.         |
| Tuesday   | February 19 | Southern Illinois University           | Carbondale, Ill.    |
| Saturday  | February 23 | *Eastern Kentucky State                | Richmond, Ky.       |
| Tuesday   | February 26 | *East Tennessee State                  | Bowling Green, Ky.  |
| Saturday  | March 2     | De Paul University                     | Chicago, Ill.       |



COACH E. A. DIDDLE

\* Indicates Ohio Valley Conference games.

APPAREL FABRICS—BLANKETS—COTTON  
WOOL REMNANTS—DRAPERY MATERIAL

**Springfield Woolen Mills  
Outlet Store**

31-W By-Pass Bowling Green Dial VI 2-7688

**TUCKER DRUG CO.**

COMPLETE PRESCRIPTION SERVICE

FREE DELIVERY

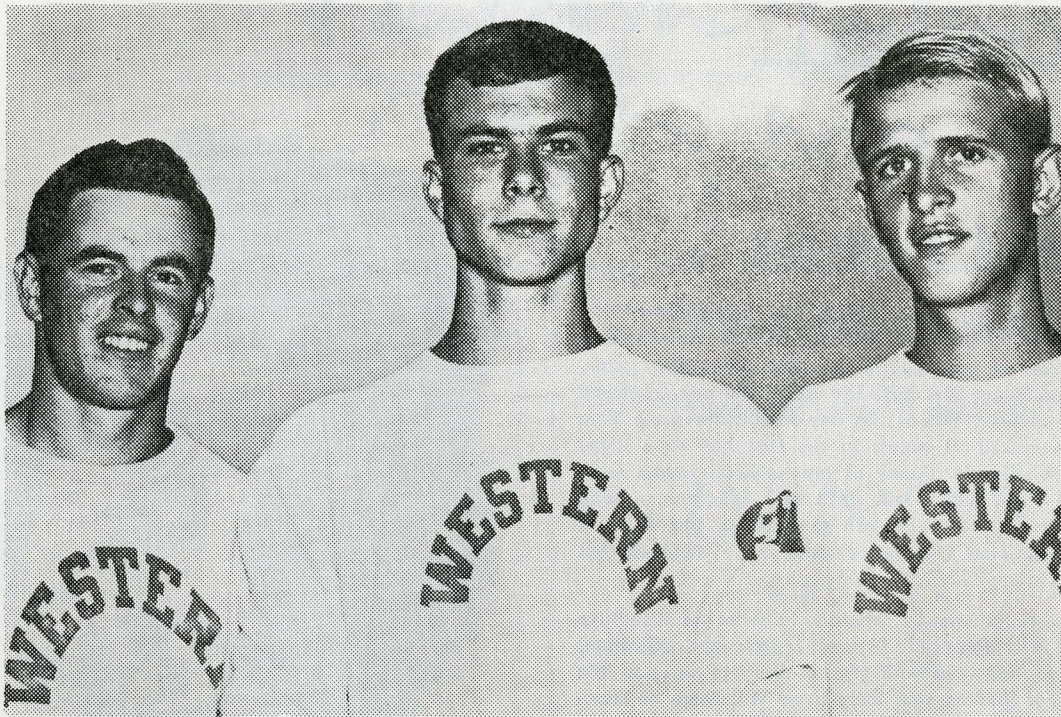
FREE PARKING

240 E. Main

VI 3-9066



## WESTERN VS. BELLARMINE AT HALFTIME



CARRY WESTERN'S CROSS-COUNTRY HOPES — This trio is expected to carry a big load for Western Kentucky's first cross-country team when it faces Bellarmine College of Louisville during the half-time break of the football game with Middle Tennessee in Western Stadium Sept. 29. From left, they are Mike Roberts, team captain and senior from Rockport, Ind.; Jerome Beazley, freshman from Anderson, Ind.; and Tom Graham, freshman from Scottsburg, Ind.

### • *First Federal Savings* •

AND LOAN ASSOCIATION OF BOWLING GREEN, KY.

CURRENT DIVIDEND

**4  $\frac{1}{2}$  %**

PAID QUARTERLY

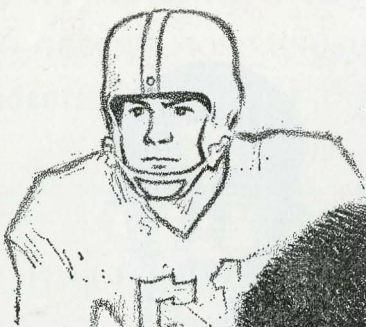


SAVE WITH CONFIDENCE  
551 EAST 10th ST.

INSURED SAFETY  
DIAL VI 2-0366



# Football and Fitness



Football has given me some of the most pleasant and exciting moments of my life, from a Harvard-Yale game I saw 40 years ago to last year's Army-Navy game. I remember my 21st birthday not as the day I became eligible to vote, but as the day Michigan's great Tom Harmon scored 21 points in the first half of a game against California. Many of my boyhood heroes were football stars, and I still thrill to a long run, a solid block, or a good tackle. In short, I am like a lot of other Americans who never quite made the team but love the game.

I sometimes wonder whether those of us who love football fully appreciate its great lesson: that dedication, discipline, and teamwork are necessary to success. We take it for granted that the players will spare no sacrifice to become alert, strong, and skilled, that they will give their best on the field. This is as it should be, and we must never expect less, but I am extremely anxious that its implications not be lost upon us.

In a large sense, all of us are engaged in a struggle more fiercely-contested, and far more important to our future, than you are witnessing here today. It is the struggle for the hearts, the minds, and the souls of men, and there are no spectators—only players. It is a struggle which will test our courage, our strength, and our stamina, and only if we are physically, mentally, and spiritually fit can we win.

In the past, on many occasions, I have expressed the belief that physical fitness is necessary to all other forms of excellence, that only the active, vigorous person can fully realize his potential. I have constantly urged parents, schools, and communities to provide their youngsters the vigorous activity necessary to healthy development. I repeat this plea now.

The young men on the field today did five or ten minutes of calisthenics just to prepare for 60 minutes of hard football. The exercises loosen their muscles, key their senses, and put them in the proper frame of mind to play. Yet, many American boys and girls cannot do one pullup, or even raise themselves to a sitting position without using their hands. Perhaps some of them are in the stands today.

A recent survey of the schools revealed that one-fourth of our children are physically underdeveloped, and that half are substandard in some phase of strength, stamina, agility, or flexibility. At the time, I described these statistics as "shocking." I will go even further: they indicate a threat to the continued vigor, growth, and freedom of America.



Fortunately, there is a way to solve our fitness problem. Working with 19 leading educational and medical organizations, my Council on Youth Fitness has outlined a program which, if adopted in every school, will enable our children to build the strength and energy which are their rightful heritage. The program suggests (1) a health appraisal for every child; (2) a physical screening process to identify underdeveloped children; (3) at least 15 minutes of vigorous activity as part of a daily physical education program, and (4) periodic achievement tests to measure progress and provide incentive.

I strongly urge you to see that your child has the opportunity to participate in such a program. Not just so that he might become a football player someday—although that would be fine, too—but so that he will be able to live imaginatively, confidently, and usefully.

Remember, all of our children are on your team. We can do no less than to see that they are fit—fit to learn, fit to understand, fit to grow in grace and stature, and fit to serve our nation in its hour of need.

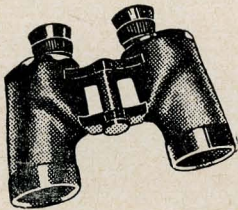


# Pushin's

"Southern Kentucky's Leading Department Store"

## BINOCULARS!

*The Perfect Gift For Football Fans!*



As Low As  
\$31.05  
With Genuine  
Leather Case!  
Three Year  
Guarantee.

As Low As  
**\$31<sup>05</sup>** with Genuine Leather Case

## CHES JOHNSON

928 PHOTO CENTER State St.

Go with the Crowd  
after the Game!

"Home of the Rebel Boy"

## DENO'S DRIVE-IN

31-W By-Pass

Phone VI 2-1912

Felix E.

Robert G.

## ALLEN MOTOR CO.

Your Chrysler-Plymouth Dealer

MOST DEPENDABLE NAME IN THE BUSINESS

416-11th

Phone VI 3-4387



## NEHI BOTTLING CO.

1001 Adams St.  
VI 3-9501

BETTER TASTE CALLS FOR RC

CONGRATULATIONS TOPPERS!

## CITIZENS NATIONAL BANK

## ELM GROVE DAIRY

"YOU CAN WHIP OUR CREAM  
YOU CAN'T BEAT OUR MILK"

Elm Grove Drive

VI 3-3747

## A. C. HUNKER

*Fine Jewelers*

REPAIRS  
DIAMONDS  
WATCHES  
GIFTS

FRATERNITY JEWELRY  
434 E. Main St.

## Hall's MEN'S SHOP

Recognized Nationally Advertised  
Brands Exclusively

444 Main

George Haneline

W. E. Abell





Take a puff...it's Springtime!



# Salem refreshes your taste —air-softens— every puff

In the rich taste of a Salem cigarette, you'll notice a softness very like the clear, mild springtime air. You'll find Salem refreshes your taste, just as springtime refreshes you.

● menthol fresh

● rich tobacco taste

● modern filter, too

Created by R. J. Reynolds Tobacco Company

D552