

2-5-1968

UA19/17/1/2 Basketball Program - WKU vs Murray State University

WKU Athletic Media Relations

Follow this and additional works at: http://digitalcommons.wku.edu/dlsc_ua_records

Recommended Citation

WKU Athletic Media Relations, "UA19/17/1/2 Basketball Program - WKU vs Murray State University" (1968). *WKU Archives Records*. Paper 1876.
http://digitalcommons.wku.edu/dlsc_ua_records/1876

This Other is brought to you for free and open access by TopSCHOLAR®. It has been accepted for inclusion in WKU Archives Records by an authorized administrator of TopSCHOLAR®. For more information, please contact topscholar@wku.edu.

HILLTOPPER

TIP-OFF

ILLUSTRATED

Western Ky. University — Bowling Green, Ky. — Official Program 25c



BANKS GOES HIGH FOR TWO

Western vs. Murray State University

FEBRUARY 5, 1968

E. A. DIDDLE ARENA

7:30 P.M.

You'll Always Find

AMERICA'S MOST FAMOUS
NAME BRANDS

AT

The logo for Pushin's is presented within a hand-drawn, slightly irregular banner shape. The word "Pushin's" is written in a bold, cursive script font, centered within the banner.

**The Fashion Center Of
Southern Kentucky**

400 EAST MAIN ST.

BOWLING GREEN, KY.

FELIX E. ROBERT G.
**ALLEN MOTOR
 COMPANY**

Your
 CHRYSLER-PLYMOUTH-
 VALIANT
 Dealer

416 11th
 Phone 843-4387

•
**MOST DEPENDABLE
 NAME IN THE
 BUSINESS**

"QUALITY TESTED"

Borders

**PURE MILK
 COMPANY**

Supreme Ice Cream

Always Shop

LEON'S
 • • On Park Row • •

Your Fashion Store

HILLTOPPER BASKETBALL



PROGRAM CONTENTS

	Page
Western in Review	2
Basketball Coaching Staff	3
Meet the Hilltoppers	4-5
Hilltopper Hot Line	7
Hilltopper Scoreboard	8
Visitor's Roster & Scorecard	9
Freshman Roster & Scorecard	10
Freshman Picture & Schedule	11
Basketball in Review	12
Hilltopper 100 Club	13
Basketball Records	14
Western Team Picture	15
Athletics Looks to the Future	16
Past All-Americans	
Inside Back Cover	
Hilltopper Schedule	
Outside Back Cover	

HILLTOPPER TIP-OFF ILLUSTRATED is the official souvenir program for all 1967-1968 home basketball games at Western Kentucky University: Prepared by the Office of Public Affairs and Public Relations, Robert G. Cochran, Dean; Written by Allen W. Stilley; Distribution, Larry Dykes.

What's Your
 Favorite?
 Basketball



Or
 Football



No Matter What
 You May Prefer
 It Will Be Covered
 On Our Sports Pages

Daily News

Everything Photographic
for
Bowling Green
and
Western



CAMERAS

KODAK FILM



MOVIE & SLIDE
PROJECTORS



FAMILY
PORTRAITS

SENIOR PICTURES



CHES
JOHNSON
Photo Center

928 State Street



EDUCATION FOR LEADERSHIP

**WESTERN
KENTUCKY
UNIVERSITY**

- ...IS located in Bowling Green.
- ...WAS founded in 1906.
- ...HAS a student body of 10,197.
- ...IS a multi-purpose university offering curricula in teacher, liberal arts and sciences, professional and pre-professional education.
- ...OFFERS a joint doctoral program in cooperation with the University of Kentucky and George Peabody College for Teachers.
- ...OFFERS 8 Master's degrees.
- ...OFFERS 32 academic majors, 37 academic minors, and 13 areas of concentration in its undergraduate program.
- ...OFFERS 10 special two-year programs.
- ...HAS served the educational interests of the Commonwealth of Kentucky and the nation for the past 60 years.
- ...HAS a focus on the future.



Dr. Kelly Thompson



Ted Hornback

WE'RE SERVING

THE CITY

WHICH BACKS

THE TEAM

THAT HAS THE

P O W E R

GO

HILLTOPPERS



**Electric Plant
Board**

Oldham, Sydnor Form Solid Coaching Nucleus

Head Basketball Coach JOHN OLDHAM

In three seasons as head coach at Western, John Oldham has posted an impressive 66-15 record and has guided the Hilltoppers to a post-season tournament berth every season. Oldham, who coached nine seasons at Tennessee Tech, has an enviable 12-year coaching record of 184-98. Now in his 13th season as a collegiate coach, Oldham is recognized as one of the nation's top basketball strategists.

Oldham graduated from Western in 1949 after a spectacular athletic career, before playing professional basketball, and coaching on the high school level before reaching the collegiate level. Oldham succeeded E. A. Diddle following the 1963-64 season.



Assistant Basketball Coach BUCK SYDNOR

Wallace B. (Buck) Sydnor was a veteran of 15 years of high school coaching before returning to Western in the fall of 1964. Sydnor's main responsibility is to develop the potential of the Hilltopper freshmen in addition to his usual coaching, scouting, and recruiting duties. He was an outstanding guard on the first two Western teams to play in the NIT in 1943 and 1944. He is a well-versed instructor in the fundamentals of basketball.



Assistant Basketball Coach
JERRY L. PARKER
University of Tennessee, 1963

Graduate Assistant
MIKE KITCHENS
Western Kentucky University, 1965



FOLLOW THE CALL
OF
MUSTANG

**WALLACE
MOTORS**
INCORPORATED

901 LEHMAN AVE.

New and Used Cars

For All Your Drug Needs

PLAZA
Pexall
PHARMACY

PLAZA SHOPPING
CENTER

31-W By-Pass

Nearest Western Campus

•
FREE PARKING
•

Owned and Operated By

A. RAY DOUGLAS
and
JOHN HENRY



STAY TUNED TO
Royal Crown
Diet Rite
Sports Network
with
WES STRADER
for
HILLTOPPER
SPORTS-IN-ACTION
on

WKCT

930 KC

- ALL WESTERN GAMES
- PRE-GAME SHOW
- PLAY-BY-PLAY
- POST GAME SHOW
- 10 FRESHMAN GAMES





Famous For Italian

and

American Foods



FOR FAST DELIVERY

Complete Carry-Out Service

842-9834



MARIO'S
Italian
Restaurant

31-W By-Pass



10—WAYNE CHAPMAN . . . Senior . . . 6-6 . . . 186 . . . 22 . . . Owensboro, Ky. Top returning scorer on squad, has improved steadily over past two years . . . has played most of varsity career at guard, but moved to forward at mid-season last year and did solid job . . . his height makes him particularly effective on defense at guard position, especially in zone alignments . . . needs to improve offensive rebounding if he stays at forward post this season . . . has good jump shot, is particularly effective scorer on fast break . . . has been something of a "streak" shooter, but showed more consistency in latter half of 1966-67 campaign .



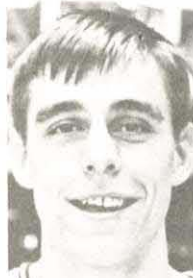
11—CHARLES SELVY . . . Sophomore . . . 6-1 . . . 178 . . . 19 . . . Corbin, Ky. Led scoring for last year's freshman club . . . has great shooting touch from outside . . . good speed, ball-handling ability . . . should be valuable asset once he becomes accustomed to playing with varsity teammates and fits his play into overall team patterns . . . is quick enough to become outstanding defender . . . youngest member of famed Selvy family of basketballers . . . elder brother Frank set NCAA single-game scoring record with 100 points in 1954 at Furman, where he's now head coach . . . another brother, Marvin, currently playing with University of Louisville.



15—RICH HENDRICK . . . Junior . . . 6-1 . . . 180 . . . 20 . . . Bristow, Ky. Should be battling for starting guard berth this season after year of seasoning . . . great shooter from almost any distance . . . quick reflexes, good hands . . . led all Kentucky prep players in scoring his junior and senior years, earning All-State and All-America honors at Bristow High, same school which produced former Western All-American Darel Carrier, now playing for Louisville Colonels of ABA . . . paced scoring for Hilltopper freshmen two years ago with 26.1 average . . . one of reasons he chose Western for collegiate career was to allow him to help out on family farm during spare time .



20—JOHNNY RUSSELL . . . Junior . . . 6-2 . . . 180 . . . 20 . . . Hardyville, Ky. Played all last season as reserve guard after playing both the back and front courts as freshman . . . good scrapper, hustler . . . improving steadily in ball control and passing . . . does good job on defense . . . should improve in ability to drive and start offensive patterns as he gains experience . . . has good shooting touch from outside.



21—BUTCH KAUFMAN . . . Senior . . . 5-10 . . . 163 . . . 22 . . . Louisville, Ky. Prime example of what desire and determination can accomplish . . . came to Western "on his own," earned grant-in-aid with fine play during freshman year, leading yearlings in scoring with 17.8 average . . . played as key reserve during sophomore year, then earned spot on starting five last season . . . good ball-handler, clever playmaker . . . always willing to give up his own shot to get the ball to teammate nearer basket . . . extremely consistent outside shooter . . . dependable at foul line . . . offsets lack of size on defense with aggressive play, continually hounding opponents .



22—WALKER BANKS . . . Sophomore . . . 6-9 . . . 205 . . . 19 . . . Clifton Forge, Va. More consistency and drive in his performances could make him one of top "big men" for Hilltoppers in recent years . . . was something of an "in-and-out" player for frosh last season, but has all physical ability for front-liner . . . good shooter from short and middle distances . . . surprising quickness and agility for size . . . has good jumping power to go with height . . . more aggressiveness could make him real factor on boards . . . Virginia high school All-Stater . . . runs well enough to fit into Western running game . . . should be contender for regular front-line role.



24—**NORMAN WEAVER** . . . Senior . . . 6-5 . . . 205 . . . 22 . . . **Scottsville, Ky.** Extremely valuable last two years as front-line reserve . . . should make big push this season to become regular . . . was particularly effective last season in relief roles at LaSalle (12 points, 4 rebounds) and at Austin Peay (12 points, 8 rebounds) when other Hilltopper front-liners got into foul trouble . . . strength and jumping ability make him tough around bucket . . . can play at both center and forward . . . made big strides toward improvement last season by working on moves toward basket . . . was All-Stater for ex-Western player Jim Bazzel at neighboring Allen County High.



25—**MIKE FAWCETT** . . . Senior . . . 5-10 . . . 175 . . . 21 . . . **Kokomo, Ind.** Another "rags to riches" story of an "overlooked" prospect who worked his way into an athletic scholarship by ability and determination . . . originally made a try for football scholarship, switched to basketball, and made grade in big way . . . has spent most of career as valuable back-line reserve, but came in to play regularly last year when Hilltopper star Clem Haskins was sidelined by broken wrist . . . responded marvelously, averaging 9.4 points for five games he started during Haskins' absence . . . helped lead team to late-season drive that clinched OVC title .



33—**PAUL HASKINS** . . . Sophomore . . . 6-4 . . . 195 . . . 19 . . . **Campbellsville, Ky.** Younger brother of last year's Western All-American, Clem Haskins . . . while probably not as talented an all-around player, Paul may be stronger in some departments of the game than Clem . . . great jumper, really goes after ball around bucket . . . extremely quick, good driver . . . fine jump shooter . . . still has to prove himself in collegiate competition since he did not play freshman ball last season . . . speed should make him easily adaptable to fast break style of play.



34—**GREG SMITH** . . . Senior . . . 6-5 . . . 205 . . . 20 . . . **Princeton, Ky.** Has few peers around basket . . . tremendous jumping ability, good touch on tap-ins . . . has great instinct for being at right spot to grab rebound . . . quick and agile enough to out-manuever many bigger opponents . . . played as forward two years ago, at center last season . . . very effective on wheel-and-drive from high post . . . ability to clear ball and get it moving down floor in fast break enhances his value as rebounder . . . named to last year's All-OVC squad . . . does solid job on defense, would be even better if able to eliminate tendency toward excessive fouling .



42—**WAYNE BRIGHT** . . . Sophomore . . . 6-8 . . . 235 . . . 19 . . . **Greencastle, Ind.** Probably improved as much as any player on last year's freshman squad . . . came on especially strong in latter half of season after being moved from forward to center . . . strength is No. 1 asset under board, but is very good jump shooter from around free throw circle . . . not exceptionally fast, but can fit himself into fast break game by learning to clear ball more quickly off defensive board and get it started down floor . . . continuation of improvement shown last year should put him into thick of fight for starting position on front line.



51—**JOE MAC HILL** . . . Senior . . . 6-2 . . . 187 . . . 21 . . . **Beaver Dam, Ky.** Has one of shrewdest basketball minds on squad . . . moves ball well, makes few mistakes . . . scrappy and tenacious on defense . . . good jump shot from out front . . . deceptively effective rebounder, mainly because of hustle, determination, ability to play position under boards . . . adept at starting pattern plays from guard post . . . has done outstanding job as reserve . . . was particularly outstanding in last year's OVC Tournament, leading late all-court press that overcame Morehead lead and enabled Hilltoppers to win semifinal game in overtime.

Complete COMMERCIAL PRINTING Service



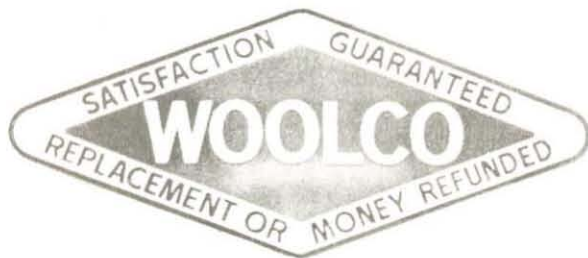
- ★ Business Forms
- ★ Stationery
- ★ Programs
- ★ Wedding Invitations

We Welcome Western
Fraternity and Sorority
Printing

MASTER
Printers, Inc.

330 East Tenth Street

PHONE 842-7191

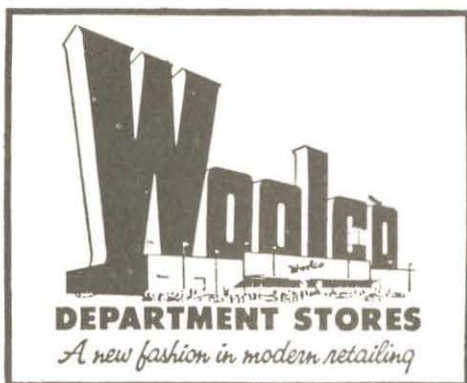


Butch Kaufman

Rich Hendrick

Mike Fawcett

ONE STOP SHOPPING FOR ALL HILLTOPPERS



4 ways to buy:

- CREDIT PLAN
30 Day Charge Account—or longer, with option terms.
- TIME PAYMENT ACCOUNT
No Down Payment. Many months to pay.
- LAY-AWAY
A convenient way to hold your purchase of the day.
- CASH — Full satisfaction or your money refunded.

SHOP 10:00 A.M. — 9:30 P.M. MONDAY thru SATURDAY • CLOSED SUNDAYS
Nashville Road & Campbell Lane on 31 W So.

'Toppers, Racers Renew Old, Hard-Fought Rivalry

Western Kentucky and Murray collide again tonight in one of the most diligently contested rivalries in collegiate basketball. Close, down-to-the-wire battles between the Hilltoppers and the Thoroughbreds have become the rule rather than the exception and there have been several overtime games in the series during recent seasons.

Western brings an 11-6 overall record and a 2-4 Ohio Valley Conference mark into tonight's contest. Murray, meanwhile, is on a streak, having won nine of its last ten games and holding a solid lead in the OVC with a 7-1 league record and a sparkling 13-4 overall mark.

The Western-Murray series began back in 1931, beginning auspiciously for the Racers as they took three straight wins from the Hilltoppers. However, Western overcame those early setbacks and currently holds a solid 65-32 advantage in the long-lived competition.

Since Johnny Oldham took over as Western's head coach in 1964, some of

the "Topper-Racer struggles have been titanic. In that span Western holds a slim 5-4 edge in games over Coach Cal Luther's club, with the Hilltoppers holding a 4-2 lead in regular season games and Murray a 2-1 margin in OVC Tournament play.

Tonight marks the second meeting of the current campaign between the two teams. Murray eliminated the Hilltoppers from last December's OVC Tournament with an 83-75 semifinal victory. That win gave the Racers two in a row over Western, since Murray bounced the Hilltoppers at Murray last season to snap a 21-game Hilltopper victory streak.

Murray's attack is again centered around its big pivotman, 6-10 Dick Cunningham, and a good outside punch from veteran guard Billy Chumbler.

However, it is a pair of newcomers to the Racer regulars that have provided a lot of spark for Murray's solid record so far this season. The club has gotten a big lift from junior college transfer Claude Virden (6-5) and hust-

ling guard-forward Tom Moran, who was a reserve last season.

All four come into tonight's clash averaging around 15-16 points per game. Cunningham, who led the nation's rebounders last season, is again among the national leaders.

Western will try to offset Murray's rebound power with its own ace of the backboards, 6-5 senior forward Greg Smith, and some accurate shooting. Smith has averaged around 14 rebounds per game all season.

Wayne Chapman continues to pace Western's scoring with a solid 21-point-plus average, followed closely by Butch Kaufman, Rich Hendrick and Smith.

After tonight's struggle, there seems to be little relief in sight for either team. Western hits the road next weekend for games at East Tennessee Saturday night and at Tennessee Tech Monday. Murray will also be traveling, taking on Eastern Kentucky at Richmond Saturday and Morehead at Morehead Monday night.

LEARN
TO
SAVE



BOWLING GREEN BANK
AND TRUST COMPANY

SAVE
TO
LEARN



THREE CONVENIENT LOCATIONS



BRANCH OFFICE
31-W By-Pass

MAIN OFFICE
903 College

UNIVERSITY BRANCH
Western Gateway

YOUR FULL SERVICE BANK

PF	NO.	PLAYER	FIRST HALF	SECOND HALF	TP
	10	Wayne CHAPMAN			
	11	Charles SELVY			
	15	Rich HENDRICK			
	20	Johnny RUSSELL			
	21	Butch KAUFMAN			
	22	Walker BANKS			
	24	Norman WEAVER			
	25	Mike FAWCETT			
	33	Paul HASKINS			
	34	Greg SMITH			
	42	Wayne BRIGHT			
	51	Joe Mac HILL			

HEAD COACH: John Oldham

ASSISTANTS: Wallace B. (Buck) Sydnor and
Jerry L. Parker



things go
better
with
Coke
TRADE-MARK®



BOTTLED UNDER THE AUTHORITY OF THE COCA-COLA COMPANY BY

BOWLING GREEN COCA-COLA BOTTLING CO.

PF	NO.	PLAYER	FIRST HALF	SECOND HALF	TP
	00	Denny POTTS			
	10	Harold SIMMONS			
	22	Steve RILEY			
	23	Billy CHUMBLER			
	24	Don FUNNEMAN			
	30	Claude VIRDEN			
	31	Jessie JEFFERSON			
	33	Gary WILSON			
	34	Ron ROMANI			
	40	Jim STOCKS			
	41	Tom MORAN			
	45	Bill LIND			
	55	Dick CUNNINGHAM			

HEAD COACH: Cal Luther

Officials: Charles Fouty and George Strauthers

FOR THE KEY TO MEN'S FINE APPAREL
VISIT . . .

JIM & GIL'S MEN SHOP

31-W By-Pass

- ★ CAPPS, CRICKETEER, and SAXONY HALL SUITS and SPORT COATS
- ★ KNOX HATS
- ★ ROBERTS SHOES
- ★ INTERWOVEN SOCKS
- ★ REGAL TIES
- ★ GULFSTREAM and HAGGAR SLACKS
- ★ GOLDEN VEE TRADITIONAL SHIRTS
- ★ LORD JEFF SWEATERS
- ★ MANHATTAN'S UNIVERSITY ROW TRADITIONAL SHIRTS
- ★ BERNARD ALTMAN SWEATERS

"Where Selling Quality Clothes is Regarded as an Obligation"

JIM BOGLE

DAVID WISEMAN
(Campus Representative)

GIL COWLES

PF	NO.	PLAYER	FIRST HALF	SECOND HALF	TP
	10	Jim ROSE—G 6-3, 175, Hazard, Ky.			
	15	Lowell TARRANTS—G 6-0, 172, Beaver Dam, Ky.			
	20	Jerome PERRY—G-F 6-2½, 187, Louisville, Ky.			
	21	James PERCELL—G 5-11, 167, Horse Cave, Ky.			
	22	Larry PATRICK—F 6-3, 172, Louisville, Ky.			
	24	Joe Kelly ABELL—F 6-5, 210, Lebanon, Ky.			
	25	David HATCHER—G 6-0, 165, Smiths Grove, Ky.			
	33	Jerry WALSH—F 6-4, 197, Louisville, Ky.			
	34	Ronnie FULKERSON—G 6-0, 160, Clarkson, Ky.			
	44	Jim McDANIELS—C 7-0, 210, Scottsville, Ky.			
	51	Cleophus MORRIS—G 6-3, 185, Louisville, Ky.			
	55	Clarence GLOVER—C 6-7½, 205, Horse Cave, Ky.			

Head Coach: Wallace (Buck) Sydnor



WAYNE
CHAPMAN

COL.
SANDERS

GREG
SMITH

NORM
WEAVER

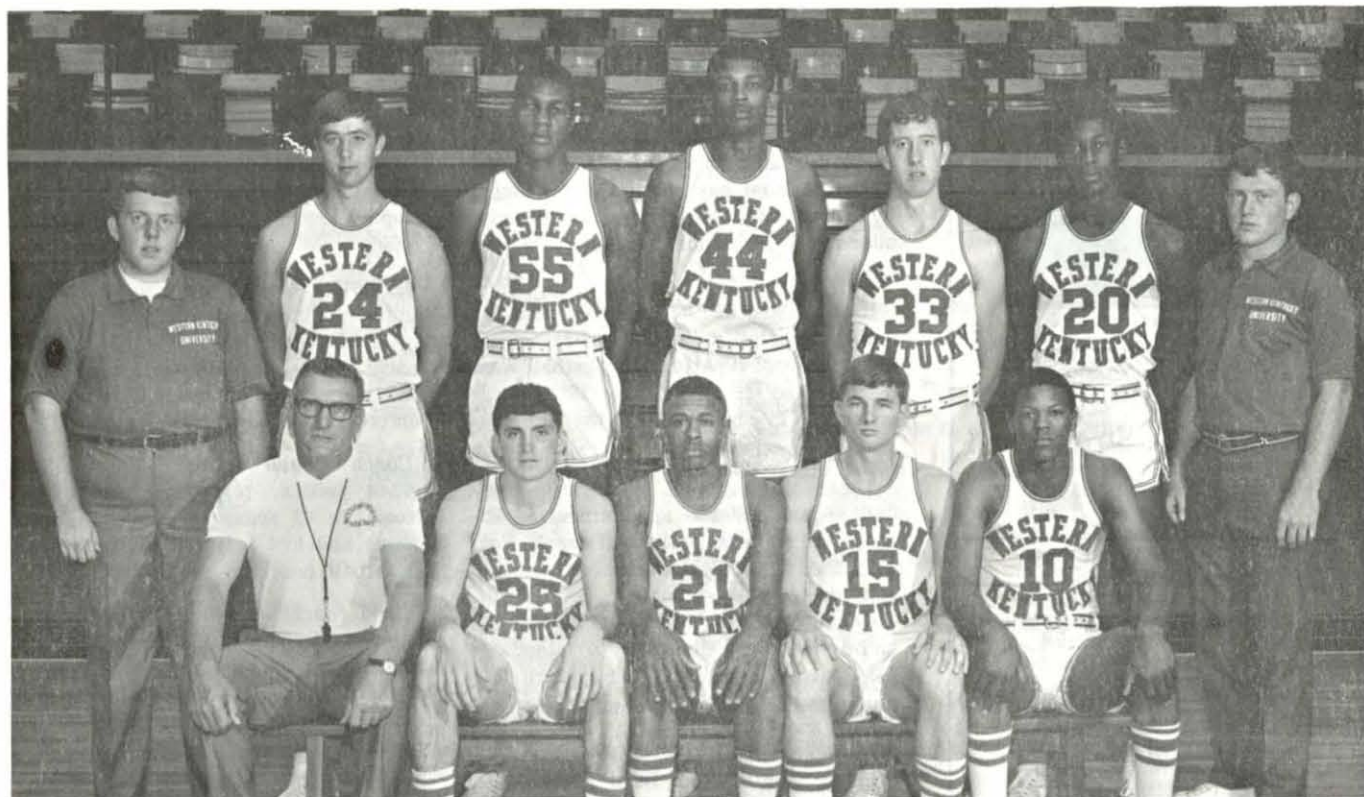
RAY'S
DRIVE-IN



RESTAURANTS

— TWO CONVENIENT LOCATIONS —
 31-W By-Pass — Featuring Col. Sanders Kentucky Fried Chicken
 8th and College — Featuring short orders and sandwiches

WESTERN KENTUCKY UNIVERSITY
1967-1968 Freshman Basketball Team



Front Row—Coach Buck Sydnor, David Hatcher, James Percell, Lowell Tarrants, Jim Rose. Second Row—Manager Steve Foster, Joe Kelly Abell, Clarence Glover, Jim McDaniels, Jerry Walsh, Jerome Perry, Manager Ron Sanders.

FRESHMAN SCHEDULE

Dec. 4—At Paducah Jr. Coll.
 Dec. 6—VANDERBILT FROSH
 Dec. 9—LINDSEY WILSON JR. COLL.
 Dec. 12—BELLARMINE FROSH
 Dec. 16—At Vanderbilt Frosh
 Jan. 6—TENN. TECH FROSH
 Jan. 8—PADUCAH JR. COLL.
 Jan. 11—At Sullivan Bus. Coll.
 Jan. 17—SULLIVAN BUS. COLL.
 Jan. 29—At Austin Peay Frosh
 Feb. 3—At Mid. Tenn. Frosh
 Feb. 5—MURRAY FROSH
 Feb. 12—At Tenn. Tech Frosh
 Feb. 15—At Lindsey Wilson Jr. Coll.
 Feb. 24—At Murray Frosh
 Feb. 26—AUSTIN PEAY FROSH
 March 2—MID. TENN. FROSH
 All Home Games at 5:30 P.M. (CST)
 Home Games Capitalized

BEST WISHES

FOR A

SUCCESSFUL SEASON

Morris Jewelers

- Art Carved Diamonds and Wedding Rings
 - W.K.U. Class Rings
- 408 Main
Bowling Green, Ky.

843-6103

**BETTERSWORTH
MOTOR COMPANY
INC.**

Your Local
CADILLAC-OLDSMOBILE
Dealer

1036 State Street

GOOD LUCK
HILLTOPPERS!



A GOOD PLACE TO SHOP

920 State Street

Compliments

of

Houchens Markets

- 817 College
- Plaza Shopping Center
- 103 Main

Bowling Green, Kentucky

WESTERN BASKETBALL FIELDS 49th TEAM

Western Kentucky University is fielding its 49th basketball team this season. Since its inauguration in 1914, the Hilltopper style of basketball has remained in the national spotlight and has greatly added to the national popularity of the game.

It all started in 1914 when Western defeated Bethel (Ky.) College 33-21, under head coach J. L. Arthur. Basketball was discontinued from 1917 to 1922 when coach L. T. Smith guided the Toppers against 13 opponents.

The real history of Western basketball began with the appointment of E. A. Diddle as head basketball coach. For 43 seasons, Diddle's name became synonymous with winning basketball. Coaching his first collegiate basketball game, Diddle witnessed a startling 103-7 victory which set the pattern for future fame and recognition.

After Western played 149 games in the original "Little Red Barn", the Hilltoppers moved into the Physical Education Building (now the Margie Helm Library) where Western was to win 336 of 374 home games in 32 seasons.

During the 1933-34 season, Diddle's Toppers posted the first of 19 seasons with 20-or-more victories — it was the first of ten straight seasons with 20 wins or more. Western won 30 of 33 games in 1937-38, which also was Ted Hornback's first season to assist Diddle.

Under coach Diddle, Western captured

13 Kentucky Intercollegiate Athletic Conference championships and eight Southern Intercollegiate Athletic Association titles in addition to placing over 20 players on All-KIAC and All-SIAA squads.

In 1948, Western became a charter member of the newly-formed Ohio Valley Conference (see page 16). Under coach Diddle, the Hilltoppers won the OVC season championships and four conference tournaments.

Coach Diddle retired following the 1963-64 season, played in the Diddle Arena. In 43 seasons, Diddle won 759 games and lost only 302 for a lifetime basketball coaching percentage of 71.5.

Head coach John Oldham and assistants Gene Rhodes and Buck Sydnor took the helm in 1964 and guided the Toppers to their ninth appearance in the National Invitational Tournament. In the 1965-66 season, the Hilltoppers posted a 25-3 record in winning the OVC championship and tournament and reaching the NCAA Tourney to finish third in the Mid-East Regional.

Last season, Western captured a "triple crown" by winning the OVC tourney and league titles and the Hurricane Classic, on the way to a 23-3 season that was terminated by an overtime loss to Dayton.

So it is that Western continues to retain its past prestige and rich heritage on the court in 1967-68.

SCORE EVERYTIME

WITH

"BIG CHEF"



31-W By-Pass

Home of the World's Greatest 15¢ Hamburger!



HILLTOPPER HUNDRED CLUB ROSTER

An organization of interested fans working to promote and continue a quality program of inter-collegiate athletics at Western Kentucky University.

Bowling Green Members

Dr. Harold Keen, M.D.
C. M. Tabor
Dr. W. M. Shreve, D.M.D.
Vernon Holder
Fred Manar
Charles E. Cummings
Don Mills
Gilbert Biggers
Leonard Deloteus
Garland Reeves
Gary Smith
H. H. Pearson
Morris Campbell
Tate C. Page
Vernon L. Gary
Richard M. Beaven, M.D.
Fred D. Jenkins, Jr.
Eugene C. Shy
Dr. W. O. Carson, M.D.
Glenn R. Fields
Woody Woolwine, Sr.
Mark E. Eastin, III
James Hunt
Rich Jackel
Emmons O. Pearson
Judge Robert M. Coleman
Harold Brantley
Richard F. Grise, M.D.
James E. Davenport
R. O. C. Green, M.D.
Dr. Matrick Lynch
R. D. Graham
Travis Hays
William A. Lessley
August Winkenhofner, Jr.
J. William Moore
James Diemer
Paul D. Wedge, Jr.
J. J. Branstetter
Roger M. Page
W. R. Jones
N. E. Jolly
Joe B. Orr
Daskel Borders
Jerry W. Martin, M.D.
E. N. Kammer
Harold Stahl
Spero Kereiakes, D.M.D.
Gatewood Brown
Allen Dodd, Jr.
Claude Duckett
Leslie Davis
Calvin Isbell
C. R. Scoggins
Doug Bradford
George M. Wells
John D. Tudor
Don H. Swigert
Jim Coombs, D.M.D.
James O. Willoughby, M.D.
Marlin White
M. A. Vaughn
Joe McFarland
John C. Perkins
T. E. Webb
John R. Henry
Kenneth R. Wallace, Jr.
N. Z. Kafoglis
Robert E. Simpson
Carroll Broderick
Edward G. Brown
Mel Browning
J. David Francis
Dudley Gifford
Robert G. Cochran
Frank D. Cain
Walter D. Richards
Robert Jordan
Charles D. Carter, D.M.D.
Billy Joe Gary
Raymond Hazelip
Carl N. Kelley

Rhea R. Lazarus
W. R. McCormack, M.D.
Robert M. Pearce
Sam Potter, D.
Don Ray
Carroll C. Brooks, M.D.
Monie Beard
Dr. H. A. Gray
Charles King
Ben Nelson
Chet Redmond
Jeff H. Jenkins
William Whitaker, Jr.
Larry F. Dykes
Jerry Mayes
C. A. Graham
Hollis Hinton
James Clark

Out-of-Town Members

Arnold Winkenhofner
Atlanta, Ga.
Gross C. Lindsey
Henderson, Ky.
Kenneth Arnold
Louisville, Ky.
W. H. "Johnnie" Crowder
Franklin, Ky.
Clarence Caple
Hodgenville, Ky.
Charles M. Ruter
Fern Creek, Ky.
Joe Emberger
Russellville, Ky.
Dr. Lewis Aaron, M.D.
Elizabethtown, Ky.
Lawrence W. Jones, M.D.
Union City, Tenn.
Robert M. Drennan
Anchorage, Ky.
William C. Hall
Shepardsville, Ky.
Mark Eastin, Jr.
Madisonville, Ky.
Jimmy L. Burden, D.M.D.
Hartford, Ky.
Ronnie Clark
Franklin, Ky.
Rondal Shrewsbury
Franklin, Ky.
Marion "Odie" Spears
Louisville, Ky.
William D. Johnson
Franklin, Ky.
Moses Master
Louisville, Ky.
Wilmer Meredith
Smiths Grove, Ky.
O. R. "Chuck" Bolton
Park Ridge, Ill.
Robert Frock
Louisville, Ky.
Charles W. Crafton
Owensboro, Ky.
Eddie Diddle, Jr.
Nashville, Tenn.
Cyril D. Duncan
Franklin, Ky.
Dr. Chalmer Embry
Owensboro, Ky.
Norman Kahn
Louisville, Ky.
Harold McGuffey
Smiths Grove, Ky.
John Rickzeh
Jersey City, N. J.
Max J. Reed
Louisville, Ky.
John W. Searcy
Franklin, Ky.
L. L. Valentine
Franklin, Ky.
Harry D. Glenn
Louisville, Ky.

Royce E. Dawson, M.D.
Owensboro, Ky.
Merrill W. Schell, M.D.
Owensboro, Ky.
H. Bemis Lawrence
Louisville, Ky.
Jim Callis, M.D.
Owensboro, Ky.
Ben Nelson
Louisville, Ky.
Joe Talley
Tell City, Ind.
Lewis Fine, M.D.
Louisville, Ky.

Business Members

Western Ky. Tractor Co.
Bill Pegues
Diet Rite Sports Network
Hank Brosche
WKCT Radio Station
Wes Strader
Dollar Bros. Shoe Co.
James Thompson
Center of Insurance, Inc.
Bill Koven
Cutler-Hammer, Inc.
Charles Doria
Morris Jewelry
Bob Kyle
D & F Super Market
Thomas Diemer
The Citizens National Bank
Jo T. Orendorf, Pres.
Houchens Foundations, Inc.
E. G. Houchens
Cutler-Hammer
J. J. Pakenham
L. F. Strassheim Co.
Scott McLean
Bowling Green Laundry &
Dry Cleaning
Houston Griffin
Western Hills Restaurant
Harold Kitchens
Leachman Motor Co.
Harry Leachman
Almond Construction Co.
Franklin, Ky.
Pearson Drug Co.
Carrol R. Pearson
American National Bank
& Trust Co.
Herbert J. Smith, Pres.
Campbell's Markets
Charles Campbell
Charles M. Moore Insurance
Charles M. Moore, Jr. Pres.
WBGN Radio Station
Robert L. Proctor
Coca-Cola Bottling Co.
O. V. Clark, Pres.
Texaco, Inc.
Roy Phillips
Interstate Box Co.
Harry L. Williamson,
Executive Vice-Pres.
Detrex Chemical Industries
George Patterson
Wallace Motors, Inc.
O. H. Wallace, Pres.
Squirt Bottling Co.
Shirley Ayers
Webb Chevrolet Co.
J. H. Webb
Johnson Funeral Home
Joe L. Bailey
First Federal Savings &
Loan Assoc.
Larry Hatfield
Anderson Ford Co.
Sebree, Ky.
Yellow Cab Co.
Alton Miller

Chester M. Hock Ins. Agcy.
Chester M. Hock, Pres.
Master Printers, Inc.
Equitable Life Insurance
Society
W. E. Winkenhofner
Simpson County Bank
Franklin, Ky.
Fuqua Bus Lines
Joe Fuqua
Hill-Motley Lumber Co.
J. M. Hill
Bridges Aircraft Sales &
Service, Inc.
Randy Hinkle
Smith's Sweet Feed Mills
L. E. Smith
Pan American Mills
Billy Smith
Border's Pure Milk Co., Inc.
Forest Borders
Jim & Gil's Men's Shop
Jim Bogle
H. C. Hanson Construction
H. C. Hanson
Master Div. of Koehring Co.
Lloyd Williford
Bowling Green Manufac-
turing Co.
Jack Hawkins
H. F. Warren & Co. Ins.
Sebree, Ky.
Sebree Deposit Bank
Sebree, Ky.
Electric Plant Board
Henry Carlisle
J. T. Patterson & Son
Bowling Green, Ky.
Southern Optical Co.
Charles B. Smith
Nehi Bottling Co.
Ted Middleton
Sonny Haynes Golf Shop
Sonny Haynes
Randolph, Hale & Meredith,
Inc.
Charles W. Meredith
Hancock Furniture Co.
Richard K. Dowse
Bowman Office Supply
Harry Bowman
Brown's Dairy Foods, Inc.
Bowling Green, Ky.
Haxby News Company
Edward E. Vanzandt
R. E. Summers Construction
R. E. Summers
Burks Pontiac Company
Norman C. Burks
Olde Fort Truck Stop
Bowling Green, Ky.
All American Shop, Inc.
Benny Jaggars
Western Gateway
Shopping Center
Buddy Stewart
Golden Branding Iron
Ada and Bill Williams
Adamson Service Station
Melvin R. Adamson
Baldwin Bootery
Robert L. Baldwin
Bowling Green Bank
& Trust
Roland Fitch, Pres.
James R. Meany
& Associates
Bowling Green, Ky.
The Sam Pushin Co.
C. V. Nance
Ches Johnson Photo Center
Ches Johnson
Gordon Smith & Co. Inc.
Gilbert Smith

YOUR HOST

FROM COAST TO COAST®



31-W By-Pass

Join Us For
Lunch
OR
Dinner

122 Rooms
842-9453

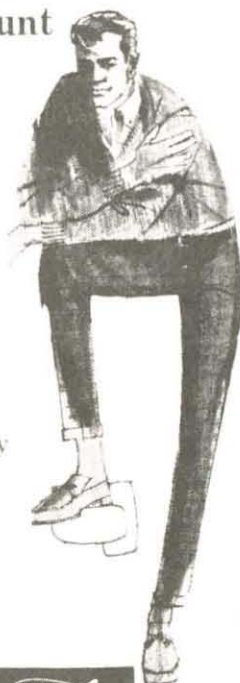
MARK OF DISTINCTION 20 20-WIN SEASONS

Western Kentucky University has fashioned more than 20-victory seasons than any other major college basketball team in the nation. The Hilltoppers have compiled 20 or more wins in 20 of the 48 seasons in which they have fielded basketball teams.

That amazing record includes one string of 10 straight 20-win seasons, beginning in 1933-34 and continuing through the 1942-43 season.

Team	No. Times
WESTERN KENTUCKY	20
Kentucky	18
St. John's (N.Y.)	15
Oklahoma State	15
Duke	15
Utah	14
Washington	14
Oregon State	13
Long Island	13
Dayton	13
North Carolina State	12
Hamline	12
Montana State	12
Bradley	12
North Carolina	12
Holy Cross	11
Louisville	11
Seattle	11
Notre Dame	10
Cincinnati	10

Game Time or
Anytime... Style
and Comfort
Count



Higgins
Slacks
look right
because they
fit right!
Up to the
minute
styling.



Sold exclusively at PUSHIN'S

HEAR HIGH SCHOOL BASKETBALL ON THE ALL-AMERICAN STATION

Bringing You
Top Area Games
District Tourney
Regional Tourney

With
Kirb Ramsey
Steve Catron

Also
Kentucky H. S.
State Tourney

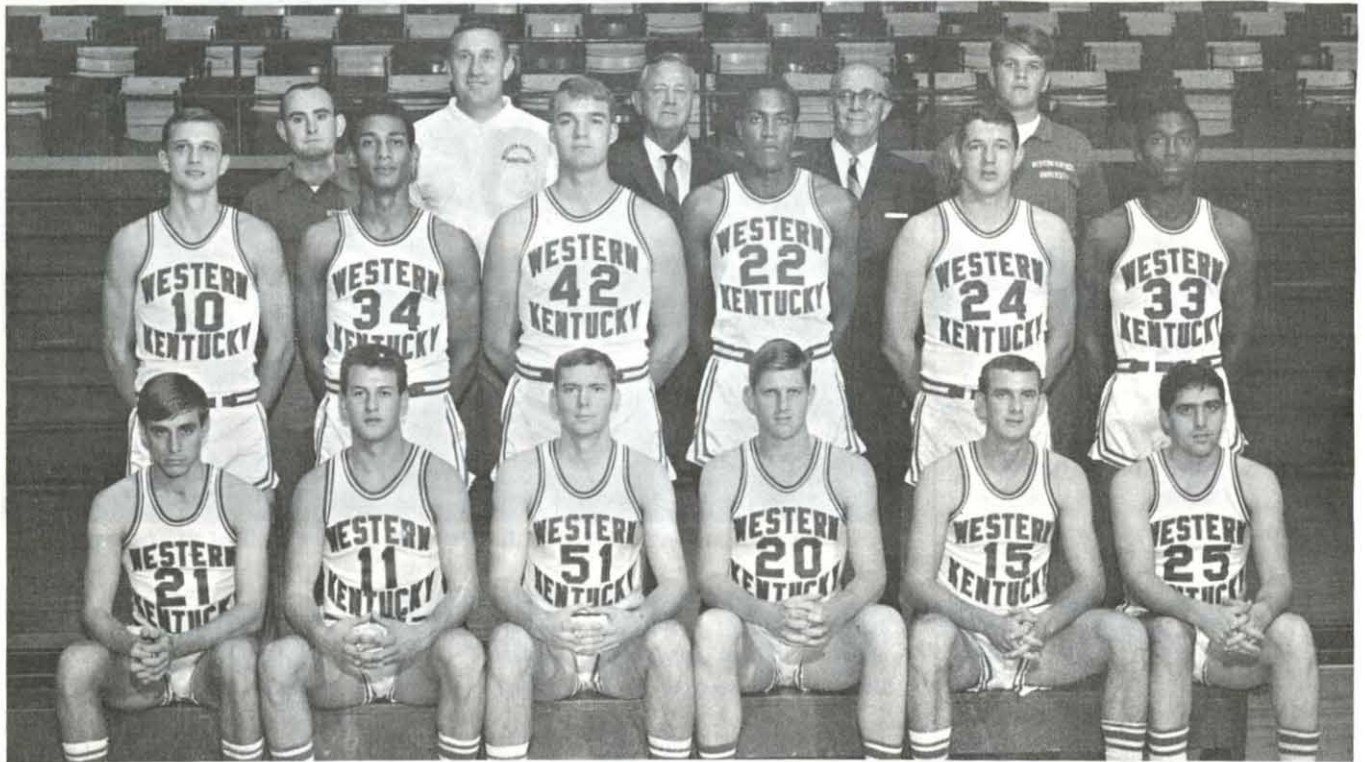
WLBJ

1410 KHZ 5000 WATTS

BEST IN MUSIC FOR
YOUR LISTENING
PLEASURE

WLBJ — FM
96.7 MHZ

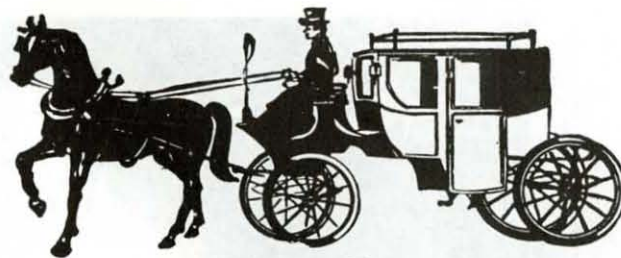
WESTERN KENTUCKY UNIVERSITY
1967-68 Varsity Basketball Squad



Front Row—Butch Kaufman, Charles Selvy, Joe Mac Hill, Johnny Russell, Rich Hendrick, Mike Fawcett. Second Row—Wayne Chapman (Co-Captain), Greg Smith (Co-Captain), Wayne Bright, Walker Banks, Norm Weaver, Paul Haskins. Third Row—Larry Williams, Manager; John Oldham, Head Coach; Ted Hornback, Athletic Director; Dr. W. R. McCormack, Team Physician; Robert Walden, Manager.

for the man who thinks 'naturally'

COACHMAN



Ltd, Inc.

"men's traditional clothier"

1159 College St.

Pres. Pete Morris

Deans Gate Suits

Cox Moore Sweaters

Corbin Trousers

Canterbury Belts

Sero Shirts

Royall Lyme Toiletries

**DOLLAR
GENERAL
STORE**



We say
we have special values.

We say
we have bargains.

We say
we welcome you.

We request
that you visit our store
to see
our values and bargains.

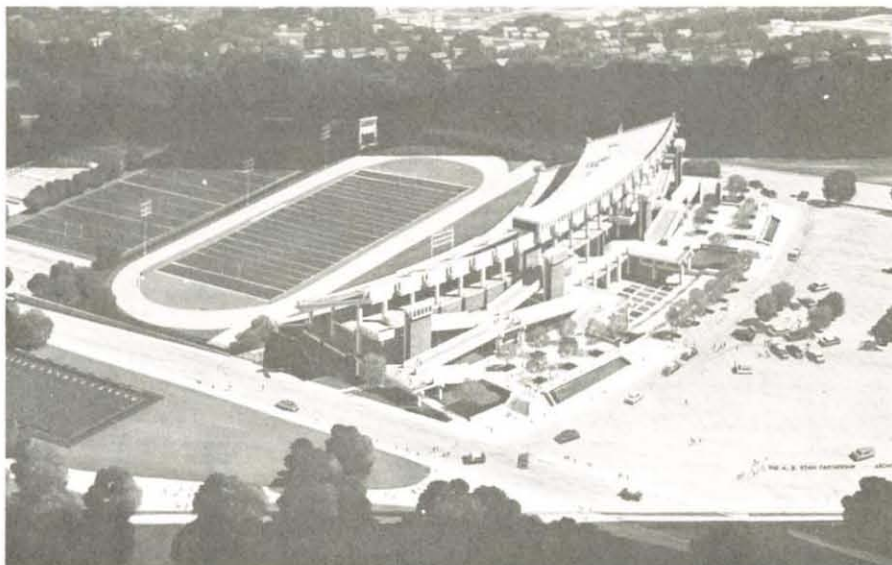
We especially request
that you visit
**DOLLAR GENERAL
STORE**
310 East Main Street
to see
if you are welcome.

We are
a self-service store,
but if you cannot find
the item you want,
please ask an employee.



**DOLLAR
GENERAL
STORE**

TOPPER ATHLETICS LOOKS TO FUTURE



ACADEMIC-ATHLETIC BUILDING NO. 2—L. T. SMITH STADIUM

The dream of completing a central athletic complex for Western Kentucky University is soon to be fulfilled.

With the construction of a new football stadium and the clearing of land south of the existing Academic Athletic Building No. 1—E. A. Diddle Arena, Western's athletic, physical education, and recreational facilities are being expanded for future needs.

Under the supervision of Director of Athletics Ted Hornback, Western's athletic teams are assured of having championship facilities to match the calibre of teams that have already brought numerous championships to the Hilltop campus.

When completed, the entire athletics complex will consist of a 16,400 seat football stadium that can be expanded to 25,000, a track with an all-weather surface, a practice field, a baseball field, and 12 tennis courts with all-weather surfaces in addition to the existing E. A. Diddle Arena—home of Western's basketball team.

The Academic-Athletic Building No. 2—L. T. Smith Football Stadium is a multi-purpose structure, including classrooms, private offices, a two-story gymnastics room, physical education and athletic shower and locker facilities, public rest rooms, concession stands, first-aid room, and an 80-seat pressbox.



E. A. DIDDLE ARENA

**WESTERN
KENTUCKY
UNIVERSITY**



Clem Haskins
1965, 1966, 1967



Darel Carrier
1964



Bob Rascoe
1962

**BASKETBALL
ALL
AMERICANS**



Tom Marshall
1953, 1954



Art Spoelstra
1953



Rip Gish
1951



Bob Lavoy
1950



John Oldham
1949



Odie Spears
1948



Dee Gibson
1948



Don Ray
1948



Oran McKinney
1943



Carlyle Towery
1940



Wm. McCrocklin
1938

You Don't Have To Be An All-American To Dress Like One

The
All-American Shop

In The Western Gateway Shopping Center

HERE'S OUR STARTING LINEUP

- SERO SHIRTS
- CLUBMAN Sport Coats
- HIS Sports Wear
- BOTANY 500 Suits
- FREEMAN Shoes
- MANHATTAN Shirts & Sweaters
- CANTERBURY Belts
- GOLD CUP Socks
- WEMBLEY Ties
- BRENTWOOD Sweaters
- RESILIO Ties

MEET OUR COACHING STAFF

Clem (The Gem) Haskins — Bennie Jagers
Dale Jagers — Leo Wells — Buddy Stewart



Bennie Jagers

Clem Haskins

Ed Diddle

Jerry's

RESTAURANTS

WESTERN KENTUCKY UNIVERSITY SCHEDULE

Dec. 1-2—OVC Tourney at Nashville, Tenn.	Jan. 15—At Morehead*
Dec. 6—LOUISIANA COLL.	Jan. 17—Dayton
Dec. 9—ST. FRANCIS (Pa.)	Jan. 20—LaSALLE
Dec. 12—BUTLER UNIV.	Jan. 29—At Austin Peay*
Dec. 15-16—Cable Car Classic at San Francisco, Calif.	Feb. 3—At Middle Tenn.*
Dec. 28-29—All-Sports Assoc. Classic at Dallas, Tex.	Feb. 5—MURRAY*
Jan. 6—TENNESSEE TECH*	Feb. 10—At East Tenn.*
Jan. 8—EAST TENNESSEE*	Feb. 12—At Tenn. Tech*
Jan. 13—At Eastern Ky.*	Feb. 17—MOREHEAD*
	Feb. 19—EASTERN KY.*
	Feb. 24—At Murray*
	Feb. 26—AUSTIN PEAY*
	March 2—MIDDLE TENN.*

*Indicates OVC Game.

All home games captialized, start at 7:30 p.m. (CST)

"AFTER THE GAME
... GO **Jerry's**!!"

31-W By-Pass

Russellville Road

