

2-19-1968

## UA19/17/1/2 Basketball Program - WKU vs Eastern Kentucky University

WKU Athletic Media Relations

Follow this and additional works at: [http://digitalcommons.wku.edu/dlsc\\_ua\\_records](http://digitalcommons.wku.edu/dlsc_ua_records)

---

### Recommended Citation

WKU Athletic Media Relations, "UA19/17/1/2 Basketball Program - WKU vs Eastern Kentucky University" (1968). *WKU Archives Records*. Paper 1878.  
[http://digitalcommons.wku.edu/dlsc\\_ua\\_records/1878](http://digitalcommons.wku.edu/dlsc_ua_records/1878)

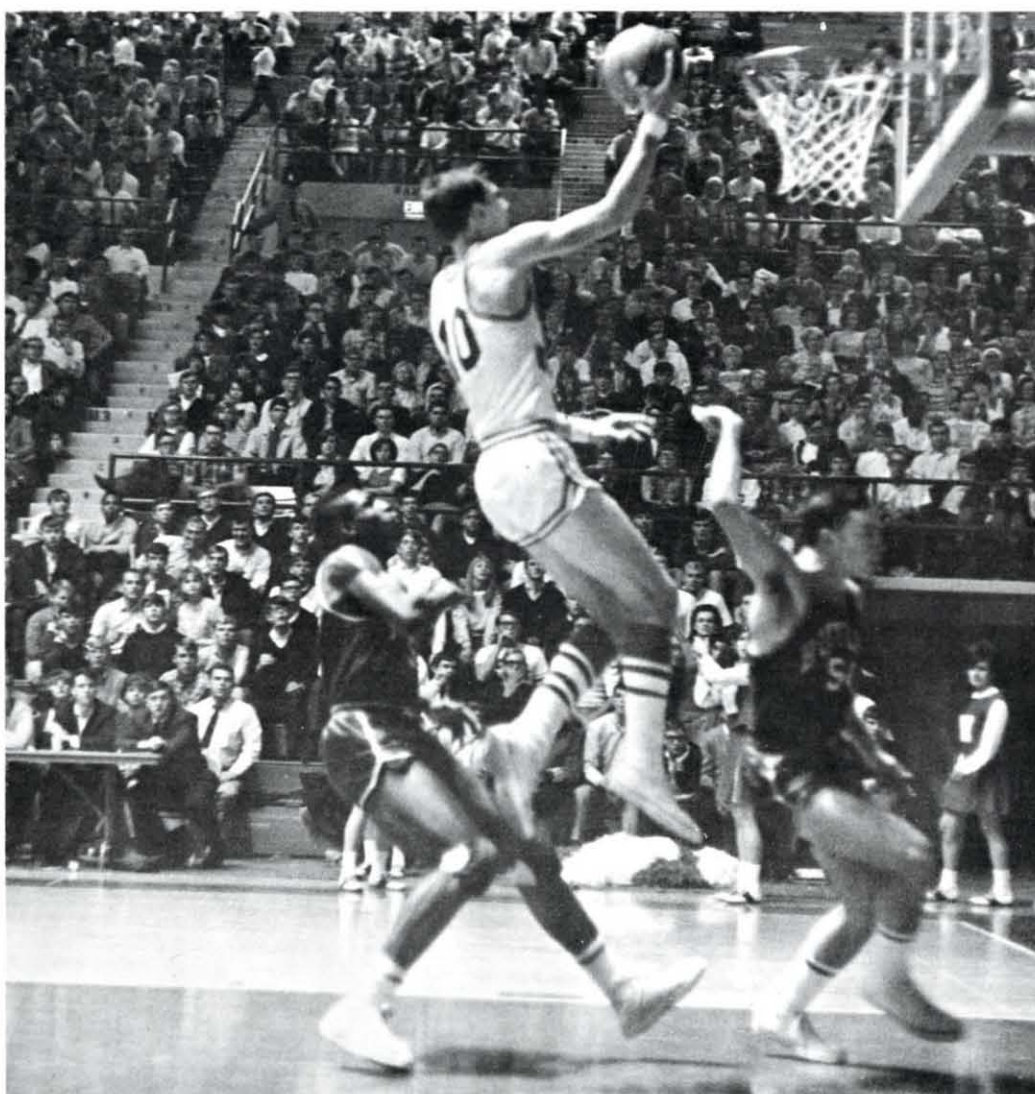
This Other is brought to you for free and open access by TopSCHOLAR®. It has been accepted for inclusion in WKU Archives Records by an authorized administrator of TopSCHOLAR®. For more information, please contact [topscholar@wku.edu](mailto:topscholar@wku.edu).

**HILLTOPPER**

# **TIP-OFF**

**ILLUSTRATED**

**Western Ky. University — Bowling Green, Ky. — Official Program 25c**



**CHAPMAN PENETRATES DEFENSE FOR TWO MORE**

**Western vs. Eastern Kentucky University**

**FEBRUARY 19, 1968**

**E. A. DIDDLE ARENA**

**7:30 P.M.**

You'll Always Find

AMERICA'S MOST FAMOUS  
NAME BRANDS

AT



**The Fashion Center Of  
Southern Kentucky**

400 EAST MAIN ST.

BOWLING GREEN, KY.

FELIX E. ROBERT G.  
ALLEN MOTOR  
COMPANY

Your  
CHRYSLER-PLYMOUTH-  
VALIANT  
Dealer

416 11th  
Phone 843-4387

•  
MOST DEPENDABLE  
NAME IN THE  
BUSINESS

"QUALITY TESTED"

*Borders*  
PURE MILK  
COMPANY

Supreme Ice Cream

Always Shop

**LEON'S**  
• • On Park Row • •

Your Fashion Store

# HILLTOPPER BASKETBALL



## PROGRAM CONTENTS

	Page
Western in Review .....	2
Basketball Coaching Staff .....	3
Meet the Hilltoppers .....	4-5
Hilltopper Hot Line .....	7
Hilltopper Scoreboard .....	8
Visitor's Roster & Scorecard .....	9
Freshman Roster & Scorecard .....	10
Freshman Picture & Schedule .....	11
Basketball in Review .....	12
Hilltopper 100 Club .....	13
Basketball Records .....	14
Western Team Picture .....	15
Athletics Looks to the Future .....	16
Past All-Americans .....	
Inside Back Cover	
Hilltopper Schedule .....	
Outside Back Cover	

HILLTOPPER TIP-OFF ILLUSTRATED is the official souvenir program for all 1967-1968 home basketball games at Western Kentucky University: Prepared by the Office of Public Affairs and Public Relations, Robert G. Cochran, Dean; Written by Allen W. Stilley; Distribution, Larry Dykes.

What's Your  
Favorite?

Basketball



Or  
Football



No Matter What  
You May Prefer  
It Will Be Covered  
On Our Sports Pages

**Daily News**  
PUBLISHED DAILY

Everything Photographic  
for  
Bowling Green  
and  
Western



CAMERAS

KODAK FILM



MOVIE & SLIDE  
PROJECTORS



FAMILY  
PORTRAITS

SENIOR PICTURES



CHES  
JOHNSON  
Photo Center

928 State Street



EDUCATION FOR LEADERSHIP

## WESTERN KENTUCKY UNIVERSITY

- ...IS located in Bowling Green.
- ...WAS founded in 1906.
- ...HAS a student body of 10,197.
- ...IS a multi-purpose university offering curricula in teacher, liberal arts and sciences, professional and pre-professional education.
- ...OFFERS a joint doctoral program in cooperation with the University of Kentucky and George Peabody College for Teachers.
- ...OFFERS 8 Master's degrees.
- ...OFFERS 32 academic majors, 37 academic minors, and 13 areas of concentration in its undergraduate program.
- ...OFFERS 10 special two-year programs.
- ...HAS served the educational interests of the Commonwealth of Kentucky and the nation for the past 60 years.
- ...HAS a focus on the future.



Dr. Kelly Thompson



Ted Hornback

WE'RE SERVING  
THE CITY  
WHICH BACKS  
THE TEAM  
THAT HAS THE

# POWER

GO  
HILLTOPPERS



Electric Plant  
Board

## Oldham, Sydnor Form Solid Coaching Nucleus

### Head Basketball Coach JOHN OLDHAM

In three seasons as head coach at Western, John Oldham has posted an impressive 66-15 record and has guided the Hilltoppers to a post-season tournament berth every season. Oldham, who coached nine seasons at Tennessee Tech, has an enviable 12-year coaching record of 184-98. Now in his 13th season as a collegiate coach, Oldham is recognized as one of the nation's top basketball strategists.

Oldham graduated from Western in 1949 after a spectacular athletic career, before playing professional basketball, and coaching on the high school level before reaching the collegiate level. Oldham succeeded E. A. Diddle following the 1963-64 season.



### Assistant Basketball Coach BUCK SYDNOR

Wallace B. (Buck) Sydnor was a veteran of 15 years of high school coaching before returning to Western in the fall of 1964. Sydnor's main responsibility is to develop the potential of the Hilltopper freshmen in addition to his usual coaching, scouting, and recruiting duties. He was an outstanding guard on the first two Western teams to play in the NIT in 1943 and 1944. He is a well-versed instructor in the fundamentals of basketball.



Assistant Basketball Coach  
**JERRY L. PARKER**  
University of Tennessee, 1963

Graduate Assistant  
**MIKE KITCHENS**  
Western Kentucky University, 1965



FOLLOW THE CALL  
OF  
MUSTANG

**WALLACE  
MOTORS**  
INCORPORATED

901 LEHMAN AVE.

New and Used Cars

For All Your Drug Needs

**PLAZA**  
**Rexall**  
**PHARMACY**

PLAZA SHOPPING  
CENTER  
31-W By-Pass  
Nearest Western Campus

•  
FREE PARKING  
•

Owned and Operated By  
**A. RAY DOUGLAS**  
and  
**JOHN HENRY**



STAY TUNED TO  
**Royal Crown**  
**Diet Rite**  
**Sports Network**  
with  
**WES STRADER**  
for  
**HILLTOPPER**  
**SPORTS-IN-ACTION**  
on

**WKCT**

930 KC

- ALL WESTERN GAMES
- PRE-GAME SHOW
- PLAY-BY-PLAY
- POST GAME SHOW
- 10 FRESHMAN GAMES





*Famous For Italian*

*and*

*American Foods*

FOR FAST DELIVERY

Complete Carry-Out Service

842-9834

**MARIO'S**  
**Italian**  
**Restaurant**

31-W By-Pass



**10—WAYNE CHAPMAN . . . Senior . . . 6-6 . . . 186**  
. . . 22 . . . Owensboro, Ky. Top returning scorer on squad, has improved steadily over past two years . . . has played most of varsity career at guard, but moved to forward at mid-season last year and did solid job . . . his height makes him particularly effective on defense at guard position, especially in zone alignments . . . needs to improve offensive rebounding if he stays at forward post this season . . . has good jump shot, is particularly effective scorer on fast break . . . has been something of a "streak" shooter, but showed more consistency in latter half of 1966-67 campaign .

**11—CHARLES SELVY . . . Sophomore . . . 6-1 . . . 178**  
. . . 19 . . . Corbin, Ky. Led scoring for last year's freshman club . . . has great shooting touch from outside . . . good speed, ball-handling ability . . . should be valuable asset once he becomes accustomed to playing with varsity teammates and fits his play into overall team patterns . . . is quick enough to become outstanding defender . . . youngest member of famed Selvy family of basketballers . . . elder brother Frank set NCAA single-game scoring record with 100 points in 1954 at Furman, where he's now head coach . . . another brother, Marvin, currently playing with University of Louisville.

**15—RICH HENDRICK . . . Junior . . . 6-1 . . . 180 . . . 20 . . . Bristow, Ky.** Should be battling for starting guard berth this season after year of seasoning . . . great shooter from almost any distance . . . quick reflexes, good hands . . . led all Kentucky prep players in scoring his junior and senior years, earning All-State and All-America honors at Bristow High, same school which produced former Western All-American Darel Carrier, now playing for Louisville Colonels of ABA . . . paced scoring for Hilltopper freshmen two years ago with 26.1 average . . . one of reasons he chose Western for collegiate career was to allow him to help out on family farm during spare time .

**20—JOHNNY RUSSELL . . . Junior . . . 6-2 . . . 180 . . . 20 . . . Hardyville, Ky.** Played all last season as reserve guard after playing both the back and front courts as freshman . . . good scrapper, hustler . . . improving steadily in ball control and passing . . . does good job on defense . . . should improve in ability to drive and start offensive patterns as he gains experience . . . has good shooting touch from outside.

**21—BUTCH KAUFMAN . . . Senior . . . 5-10 . . . 163 . . . 22 . . . Louisville, Ky.** Prime example of what desire and determination can accomplish . . . came to Western "on his own," earned grant-in-aid with fine play during freshman year, leading yearlings in scoring with 17.8 average . . . played as key reserve during sophomore year, then earned spot on starting five last season . . . good ball-handler, clever playmaker . . . always willing to give up his own shot to get the ball to teammate nearer basket . . . extremely consistent outside shooter . . . dependable at foul line . . . offsets lack of size on defense with aggressive play, continually hounding opponents .

**22—WALKER BANKS . . . Sophomore . . . 6-9 . . . 205 . . . 19 . . . Clifton Forge, Va.** More consistency and drive in his performances could make him one of top "big men" for Hilltoppers in recent years . . . was something of an "in-and-out" player for frosh last season, but has all physical ability for front-liner . . . good shooter from short and middle distances . . . surprising quickness and agility for size . . . has good jumping power to go with height . . . more aggressiveness could make him real factor on boards . . . Virginia high school All-Stater . . . runs well enough to fit into Western running game . . . should be contender for regular front-line role.

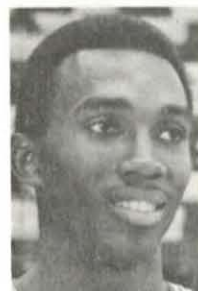
Official Basketball Program



**24—NORMAN WEAVER . . . Senior . . . 6-5 . . . 205**  
 . . . 22 . . . **Scottsville, Ky.** Extremely valuable last two years as front-line reserve . . . should make big push this season to become regular . . . was particularly effective last season in relief roles at LaSalle (12 points, 4 rebounds) and at Austin Peay (12 points, 8 rebounds) when other Hilltopper front-liners got into foul trouble . . . strength and jumping ability make him tough around bucket . . . can play at both center and forward . . . made big strides toward improvement last season by working on moves toward basket . . . was All-Stater for ex-Western player Jim Bazzel at neighboring Allen County High.



**25—MIKE FAWCETT . . . Senior . . . 5-10 . . . 175 . . . 21**  
 . . . **Kokomo, Ind.** Another "rags to riches" story of an "overlooked" prospect who worked his way into an athletic scholarship by ability and determination . . . originally made a try for football scholarship, switched to basketball, and made grade in big way . . . has spent most of career as valuable back-line reserve, but came in to play regularly last year when Hilltopper star Clem Haskins was sidelined by broken wrist . . . responded marvelously, averaging 9.4 points for five games he started during Haskins' absence . . . helped lead team to late-season drive that clinched OVC title .



**33—PAUL HASKINS . . . Sophomore . . . 6-4 . . . 195**  
 . . . 19 . . . **Campbellsville, Ky.** Younger brother of last year's Western All-American, Clem Haskins . . . while probably not as talented an all-around player, Paul may be stronger in some departments of the game than Clem . . . great jumper, really goes after ball around bucket . . . extremely quick, good driver . . . fine jump shooter . . . still has to prove himself in collegiate competition since he did not play freshman ball last season . . . speed should make him easily adaptable to fast break style of play.



**34—GREG SMITH . . . Senior . . . 6-5 . . . 205 . . . 20**  
 . . . **Princeton, Ky.** Has few peers around basket . . . tremendous jumping ability, good touch on tap-ins . . . has great instinct for being at right spot to grab rebound . . . quick and agile enough to out-manuever many bigger opponents . . . played as forward two years ago, at center last season . . . very effective on wheel-and-drive from high post . . . ability to clear ball and get it moving down floor in fast break enhances his value as rebounder . . . named to last year's All-OVC squad . . . does solid job on defense, would be even better if able to eliminate tendency toward excessive fouling .



**42—WAYNE BRIGHT . . . Sophomore . . . 6-8 . . . 235**  
 . . . 19 . . . **Greencastle, Ind.** Probably improved as much as any player on last year's freshman squad . . . came on especially strong in latter half of season after being moved from forward to center . . . strength is No. 1 asset under board, but is very good jump shooter from around free throw circle . . . not exceptionally fast, but can fit himself into fast break game by learning to clear ball more quickly off defensive board and get it started down floor . . . continuation of improvement shown last year should put him into thick of fight for starting position on front line.



**51—JOE MAC HILL . . . Senior . . . 6-2 . . . 187 . . . 21**  
 . . . **Beaver Dam, Ky.** Has one of shrewdest basketball minds on squad . . . moves ball well, makes few mistakes . . . scrappy and tenacious on defense . . . good jump shot from out front . . . deceptively effective rebounder, mainly because of hustle, determination, ability to play position under boards . . . adept at starting pattern plays from guard post . . . has done outstanding job as reserve . . . was particularly outstanding in last year's OVC Tournament, leading late all-court press that overcame Morehead lead and enabled Hilltoppers to win semifinal game in overtime.

## Complete **COMMERCIAL PRINTING** Service



★ Business Forms

★ Stationery

★ Programs

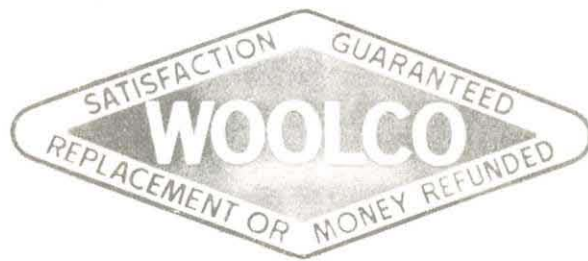
★ Wedding Invitations

We Welcome Western  
 Fraternity and Sorority  
 Printing

**MASTER**  
*Printers, Inc.*

330 East Tenth Street

PHONE 842-7191



Butch Kaufman

Rich Hendrick

Mike Fawcett

## ONE STOP SHOPPING FOR ALL HILLTOPPERS



### 4 ways to buy:

- CREDIT PLAN  
30 Day Charge Account—or longer, with option terms.
- TIME PAYMENT ACCOUNT  
No Down Payment. Many months to pay.
- LAY-AWAY  
A convenient way to hold your purchase of the day.
- CASH — Full satisfaction or your money refunded.

SHOP 10:00 A.M. — 9:30 P.M. MONDAY thru SATURDAY • CLOSED SUNDAYS

Nashville Road & Campbell Lane on 31 W So.

## 'Toppers Out To Even Season Series With Eastern

An athlete must force himself to forget what is in the past and look toward the job at hand.

However, that may be most difficult for Western Kentucky's Hilltoppers tonight as they bring their 14-7 overall and 5-5 Ohio Valley Conference records against Eastern Kentucky's 9-10 and 5-5 marks, respectively.

Tonight's game is the second time this season that Western and Eastern have squared off. That first meeting, which took place last month in Richmond, will be readily remembered by both teams. The recollection will be most unpleasant for the Hilltoppers.

It was the worst licking absorbed by a Western team in years—one of those things that "couldn't happen," but did. Hitting on less than 17 per cent of their shots from the floor in the first half, the Hilltoppers suffered through a first-half disaster. They were down to the inspired Colonels, 52-18, at the half before coming back to play a creditable second half, finally losing it, 99-69.

The big factor in that game for Eastern was 6-7 center Garfield Smith, who hauled in 30 rebounds and scored 25

points. The outcome of tonight's game may well depend upon how successful Hilltopper centers Walker Banks and Wayne Bright are in their efforts to stop Smith.

Garfield, a cousin to last year's Western All-American, Clem Haskins, has been first or second among the nation's rebounders for most of the season.

In addition to Smith's threat from the inside, Eastern has a good backcourt game led by nifty Bobby Washington, last year's OVC Sophomore of the Year. He gets plenty of help at the guard post from soph Toke Coleman.

Another player who has given the Colonels a boost is 6-8 sophomore Boyd Lynch. His specialty seems to be a looping one-hander from almost incredible distances.

Eastern's defense in that first meeting at Richmond was superb. It presents a great challenge to Western's Wayne Chapman, Greg Smith, Butch Kaufman, Rich Hendrick and Banks.

Chapman continues to be the team's top scorer, followed closely by Hendrick and Kaufman. Smith is also carrying a double-figure average, with Banks

pulling his average up gradually after playing most of the early part of the season as a substitute.

The Eastern-Western series is one of the oldest and most hotly contested in the history of Kentucky. The two schools first began playing each other back in 1914. Since that time, Western has won 75 games, Eastern 30.

Western's next game will be with league leading Murray this coming Saturday night at Murray. The Thoroughbreds will be out to avenge a 79-78 loss afflicted on them at Diddle Arena February 5.

Western will return to Diddle Arena next week to conclude its 67-68 regular season play by hosting Austin Peay Monday night and Middle Tennessee Saturday night.

In the preliminary game Saturday night, the Western Freshmen, led by 7 foot center Jim McDaniels, will carry a 9 game winning streak against the Murray Frosh. The Western yearlings will conclude their season next week with Austin Peay and Middle Tennessee freshmen squads respectively.

LEARN  
TO  
SAVE



SAVE  
TO  
LEARN



THREE CONVENIENT LOCATIONS



BRANCH OFFICE  
31-W By-Pass

MAIN OFFICE  
903 College

UNIVERSITY BRANCH  
Western Gateway

YOUR FULL SERVICE BANK

PF	NO.	PLAYER	FIRST HALF	SECOND HALF	TP
	10	Wayne CHAPMAN			
	11	Charles SELVY			
	15	Rich HENDRICK			
	20	Johnny RUSSELL			
	21	Butch KAUFMAN			
	22	Walker BANKS			
	24	Norman WEAVER			
	25	Mike FAWCETT			
	33	Paul HASKINS			
	34	Greg SMITH			
	42	Wayne BRIGHT			
	51	Joe Mac HILL			

HEAD COACH: John Oldham

ASSISTANTS: Wallace B. (Buck) Sydnor and  
Jerry L. Parker



things go  
better  
with  
**Coke**  
TRADE-MARK®



BOTTLED UNDER THE AUTHORITY OF THE COCA-COLA COMPANY BY

**BOWLING GREEN COCA-COLA BOTTLING CO.**

PF	NO.	PLAYER	FIRST HALF	SECOND HALF	TP
	11	Dan JORDAN			
	13	Jerry GODBEY			
	15	Paul BRYANT			
	21	Larry TRUNNEL			
	23	Toke COLEMAN			
	25	Willie WOODS			
	31	Boyd LYNCH			
	33	Chester ROSE			
	35	Gary PAUL			
	43	Ed HARE			
	45	Bobby WASHINGTON			
	51	Leon BAILEY			
	53	Joe PRATS			
	55	Garfield SMITH			

HEAD COACH: Guy Strong

Officials: George Strauthers and Russ Waddell

FOR THE KEY TO MEN'S FINE APPAREL  
VISIT . . .

## JIM & GIL'S MEN SHOP

31-W By-Pass

- |   |                                   |
|---|-----------------------------------|
| ★ CAPPS, CRICKETEER, and SAXONY HALL<br>SUITS and SPORT COATS | ★ KNOX HATS                       |
| ★ ROBERTS SHOES   | ★ INTERWOVEN SOCKS                |
| ★ REGAL TIES  | ★ GULFSTREAM and HAGGAR<br>SLACKS |
| ★ GOLDEN VEE TRADITIONAL SHIRTS                               | ★ LORD JEFF SWEATERS              |
| ★ MANHATTAN'S UNIVERSITY ROW<br>TRADITIONAL SHIRTS            | ★ MUNSINGWEAR GOLF SHIRTS         |

*"Where Selling Quality Clothes is Regarded as an Obligation"*

JIM BOGLE

DAVID WISEMAN  
(Campus Representative)

GIL COWLES

PF	NO.	PLAYER	FIRST HALF	SECOND HALF	TP
	10	Jim ROSE—G 6-3, 175, Hazard, Ky.			
	15	Lowell TARRANTS—G 6-0, 172, Beaver Dam, Ky.			
	20	Jerome PERRY—G-F 6-3½, 187, Louisville, Ky.			
	21	James PERCELL—G 5-11, 167, Horse Cave, Ky.			
	22	Larry PATRICK—F 6-3, 172, Louisville, Ky.			
	24	Joe Kelly ABELL—F 6-5, 210, Lebanon, Ky.			
	25	David HATCHER—G 6-0, 165, Smiths Grove, Ky.			
	33	Jerry WALSH—F 6-4, 197, Louisville, Ky.			
	34	Ronnie FULKERSON—G 6-0, 160, Clarkson, Ky.			
	44	Jim McDANIELS—C 7-0, 210, Scottsville, Ky.			
	51	Cleophus MORRIS—G 6-3, 185, Louisville, Ky.			
	55	Clarence GLOVER—C 6-7½, 205, Horse Cave, Ky.			

Head Coach: Wallace (Buck) Sydnor



WAYNE  
CHAPMAN

COL.  
SANDERS

GREG  
SMITH

NORM  
WEAVER

RAY'S  
DRIVE-IN

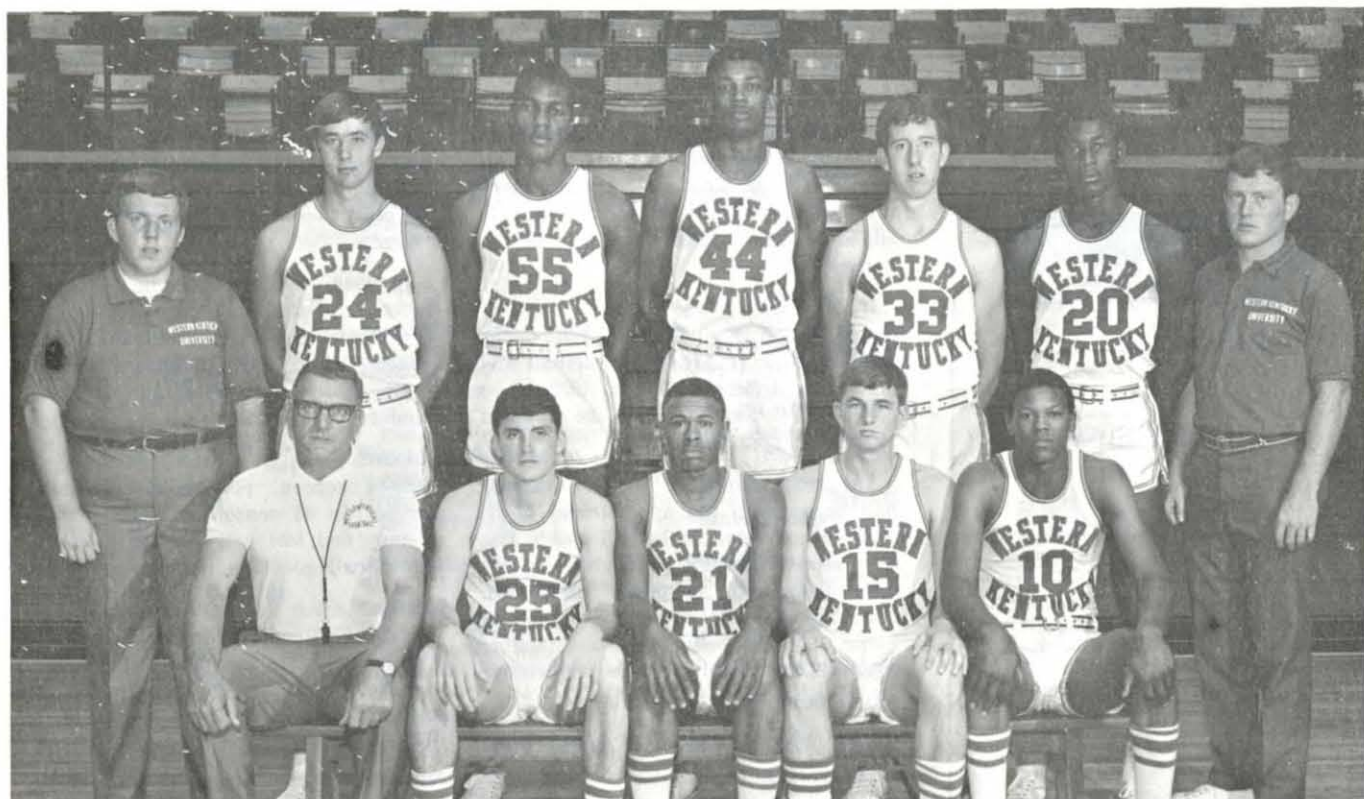


RESTAURANTS

— TWO CONVENIENT LOCATIONS —  
31-W By-Pass — Featuring Col. Sanders Kentucky Fried Chicken  
8th and College — Featuring short orders and sandwiches

# WESTERN KENTUCKY UNIVERSITY

## 1967-1968 Freshman Basketball Team



Front Row—Coach Buck Sydnor, David Hatcher, James Percell, Lowell Tarrants, Jim Rose. Second Row—Manager Steve Foster, Joe Kelly Abell, Clarence Glover, Jim McDaniels, Jerry Walsh, Jerome Perry, Manager Ron Sanders.

### BETTERSWORTH MOTOR COMPANY INC.

Your Local  
CADILLAC-OLDSMOBILE  
Dealer

1036 State Street

### FRESHMAN SCHEDULE

Dec. 4—At Paducah Jr. Coll.  
Dec. 6—VANDERBILT FROSH  
Dec. 9—LINDSEY WILSON JR. COLL.  
Dec. 12—BELLARMINE FROSH  
Dec. 16—At Vanderbilt Frosh  
Jan. 6—TENN. TECH FROSH  
Jan. 8—PADUCAH JR. COLL.  
Jan. 11—At Sullivan Bus. Coll.  
Jan. 17—SULLIVAN BUS. COLL.  
Jan. 29—At Austin Peay Frosh  
Feb. 3—At Mid. Tenn. Frosh  
Feb. 5—MURRAY FROSH  
Feb. 12—At Tenn. Tech Frosh  
Feb. 15—At Lindsey Wilson Jr. Coll.  
Feb. 24—At Murray Frosh  
Feb. 26—AUSTIN PEAY FROSH  
March 2—MID. TENN. FROSH  
All Home Games at 5:30 P.M. (CST)  
Home Games Capitalized

BEST WISHES  
FOR A  
SUCCESSFUL SEASON

### Morris Jewelers

- Art Carved Diamonds and Wedding Rings
  - W.K.U. Class Rings
- 408 Main  
Bowling Green, Ky.  
843-6103

GOOD LUCK  
HILLTOPPERS!



A GOOD PLACE TO SHOP

920 State Street

Compliments  
of  
**Houchens Markets**

- 817 College
- Plaza Shopping Center
- 103 Main

Bowling Green, Kentucky

# WESTERN BASKETBALL FIELDS 49th TEAM

Western Kentucky University is fielding its 49th basketball team this season. Since its inauguration in 1914, the Hilltopper style of basketball has remained in the national spotlight and has greatly added to the national popularity of the game.

It all started in 1914 when Western defeated Bethel (Ky.) College 38-21, under head coach J. L. Arthur. Basketball was discontinued from 1917 to 1922 when coach L. T. Smith guided the Toppers against 13 opponents.

The real history of Western basketball began with the appointment of E. A. Diddle as head basketball coach. For 43 seasons, Diddle's name became synonymous with winning basketball. Coaching his first collegiate basketball game, Diddle witnessed a startling 103-7 victory which set the pattern for future fame and recognition.

After Western played 149 games in the original "Little Red Barn", the Hilltoppers moved into the Physical Education Building (now the Margie Helm Library) where Western was to win 336 of 374 home games in 32 seasons.

During the 1933-34 season, Diddle's Toppers posted the first of 19 seasons with 20-or-more victories — it was the first of ten straight seasons with 20 wins or more. Western won 30 of 33 games in 1937-38, which also was Ted Hornback's first season to assist Diddle.

Under coach Diddle, Western captured

13 Kentucky Intercollegiate Athletic Conference championships and eight Southern Intercollegiate Athletic Association titles in addition to placing over 20 players on All-KIAC and All-SIAA squads.

In 1948, Western became a charter member of the newly-formed Ohio Valley Conference (see page 16). Under coach Diddle, the Hilltoppers won the OVC season championships and four conference tournaments.

Coach Diddle retired following the 1963-64 season, played in the Diddle Arena. In 43 seasons, Diddle won 759 games and lost only 302 for a lifetime basketball coaching percentage of 71.5.

Head coach John Oldham and assistants Gene Rhodes and Buck Sydnor took the helm in 1964 and guided the Toppers to their ninth appearance in the National Invitational Tournament. In the 1965-66 season, the Hilltoppers posted a 25-3 record in winning the OVC championship and tournament and reaching the NCAA Tourney to finish third in the Mid-East Regional.

Last season, Western captured a "triple crown" by winning the OVC tourney and league titles and the Hurricane Classic, on the way to a 23-3 season that was terminated by an overtime loss to Dayton.

So it is that Western continues to retain its past prestige and rich heritage on the court in 1967-68.

## SCORE EVERYTIME

WITH

## "BIG CHEF"



31-W By-Pass

Home of the World's Greatest 15¢ Hamburgers!



# HILLTOPPER HUNDRED CLUB ROSTER

An organization of interested fans working to promote and continue a quality program of inter-collegiate athletics at Western Kentucky University.

## Bowling Green Members

Dr. Harold Keen, M.D.  
C. M. Tabor  
Dr. W. M. Shreve, D.M.D.  
Vernon Holder  
Fred Manar  
Charles E. Cummings  
Don Mills  
Gilbert Biggers  
Leonard Deloteus  
Garland Reeves  
Gary Smith  
H. H. Pearson  
Morris Campbell  
Tate C. Page  
Vernon L. Gary  
Richard M. Beaven, M.D.  
Fred D. Jenkins, Jr.  
Eugene C. Shy  
Dr. W. O. Carson, M.D.  
Glenn R. Fields  
Woody Woolwine, Sr.  
Mark E. Eastin, III  
James Hunt  
Rich Jackel  
Emmons O. Pearson  
Judge Robert M. Coleman  
Harold Brantley  
Richard F. Grise, M.D.  
James E. Davenport  
R. O. C. Green, M.D.  
Dr. Matrick Lynch  
R. D. Graham  
Travis Hays  
William A. Lessley  
August Winkenhof, Jr.  
J. William Moore  
James Diemer  
Paul D. Wedge, Jr.  
J. J. Branstetter  
Roger M. Page  
W. R. Jones  
N. E. Jolly  
Joe B. Orr  
Daskel Borders  
Jerry W. Martin, M.D.  
E. N. Kammer  
Harold Stahl  
Spero Kereiakes, D.M.D.  
Gatewood Brown  
Allen Dodd, Jr.  
Claude Duckett  
Leslie Davis  
Calvin Isbell  
C. R. Scoggins  
Doug Bradford  
George M. Wells  
John D. Tudor  
Don H. Swigert  
Jim Coombs, D.M.D.  
James O. Willoughby, M.D.  
Marlin White  
M. A. Vaughn  
Joe McFarland  
John C. Perkins  
T. E. Webb  
John R. Henry  
Kenneth R. Wallace, Jr.  
N. Z. Kafoglis  
Robert E. Simpson  
Carroll Broderick  
Edward G. Brown  
Mel Browning  
J. David Francis  
Dudley Gifford  
Robert G. Cochran  
Frank D. Cain  
Walter D. Richards  
Robert Jordan  
Charles D. Carter, D.M.D.  
Billy Joe Gary  
Raymond Hazelip  
Carl N. Kelley

Rhea R. Lazarus  
W. R. McCormack, M.D.  
Robert M. Pearce  
Sam Potter, D.  
Don Ray  
Carroll C. Brooks, M.D.  
Monie Beard  
Dr. H. A. Gray  
Charles King  
Ben Nelson  
Chet Redmond  
Jeff H. Jenkins  
William Whitaker, Jr.  
Larry F. Dykes  
Jerry Mayes  
C. A. Graham  
Hollis Hinton  
James Clark

## Out-of-Town Members

Arnold Winkenhof  
Atlanta, Ga.  
Gross C. Lindsey  
Henderson, Ky.  
Kenneth Arnold  
Louisville, Ky.  
W. H. "Johnie" Crowder  
Franklin, Ky.  
Clarence Caple  
Hodgenville, Ky.  
Charles M. Ruter  
Fern Creek, Ky.  
Joe Emberger  
Russellville, Ky.  
Dr. Lewis Aaron, M.D.  
Elizabethtown, Ky.  
Lawrence W. Jones, M.D.  
Union City, Tenn.  
Robert M. Drennan  
Anchorage, Ky.  
William C. Hall  
Shepardsville, Ky.  
Mark Eastin, Jr.  
Madisonville, Ky.  
Jimmy L. Burden, D.M.D.  
Hartford, Ky.  
Ronnie Clark  
Franklin, Ky.  
Rondal Shrewsbury  
Franklin, Ky.  
Marion "Odie" Spears  
Louisville, Ky.  
William D. Johnson  
Franklin, Ky.  
Moses Master  
Louisville, Ky.  
Wilmer Meredith  
Smiths Grove, Ky.  
O. R. "Chuck" Bolton  
Park Ridge, Ill.  
Robert Frock  
Louisville, Ky.  
Charles W. Crafton  
Owensboro, Ky.  
Eddie Diddle, Jr.  
Nashville, Tenn.  
Cyril D. Duncan  
Franklin, Ky.  
Dr. Chalmer Embry  
Owensboro, Ky.  
Norman Kahn  
Louisville, Ky.  
Harold McGuffey  
Smiths Grove, Ky.  
John Rickzeh  
Jersey City, N. J.  
Max J. Reed  
Louisville, Ky.  
John W. Searcy  
Franklin, Ky.  
L. L. Valentine  
Franklin, Ky.  
Harry D. Glenn  
Louisville, Ky.

Royce E. Dawson, M.D.  
Owensboro, Ky.  
Merrill W. Schell, M.D.  
Owensboro, Ky.  
H. Bemis Lawrence  
Louisville, Ky.  
Jim Callis, M.D.  
Owensboro, Ky.  
Ben Nelson  
Louisville, Ky.  
Joe Talley  
Tell City, Ind.  
Lewis Fine, M.D.  
Louisville, Ky.

## Business Members

Western Ky. Tractor Co.  
Bill Pegues  
Diet Rite Sports Network  
Hank Brosche  
WKCT Radio Station  
Wes Strader  
Dollar Bros. Shoe Co.  
James Thompson  
Center of Insurance, Inc.  
Bill Koven  
Cutler-Hammer, Inc.  
Charles Doria  
Morris Jewelry  
Bob Kyle  
D & F Super Market  
Thomas Diemer  
The Citizens National Bank  
Jo T. Orendorf, Pres.  
Houchens Foundations, Inc.  
E. G. Houchens  
Cutler-Hammer  
J. J. Pakenham  
L. F. Strassheim Co.  
Scott McLean  
Bowling Green Laundry &  
Dry Cleaning  
Houston Griffin  
Western Hills Restaurant  
Harold Kitchens  
Leachman Motor Co.  
Harry Leachman  
Almond Construction Co.  
Franklin, Ky.  
Pearson Drug Co.  
Carrol R. Pearson  
American National Bank  
& Trust Co.  
Herbert J. Smith, Pres.  
Campbell's Markets  
Charles Campbell  
Charles M. Moore Insurance  
Charles M. Moore, Jr. Pres.  
WBGW Radio Station  
Robert L. Proctor  
Coca-Cola Bottling Co.  
O. V. Clark, Pres.  
Texaco, Inc.  
Roy Phillips  
Interstate Box Co.  
Harry L. Williamson,  
Executive Vice-Pres.  
Detrex Chemical Industries  
George Patterson  
Wallace Motors, Inc.  
O. H. Wallace, Pres.  
Squirt Bottling Co.  
Shirley Ayers  
Webb Chevrolet Co.  
J. H. Webb  
Johnson Funeral Home  
Joe L. Bailey  
First Federal Savings &  
Loan Assoc.  
Larry Hatfield  
Anderson Ford Co.  
Sebree, Ky.  
Yellow Cab Co.  
Alton Miller

Chester M. Hock Ins. Agcy.  
Chester M. Hock, Pres.  
Master Printers, Inc.  
Equitable Life Insurance  
Society  
W. E. Winkenhof  
Simpson County Bank  
Franklin, Ky.  
Fuqua Bus Lines  
Joe Fuqua  
Hill-Motley Lumber Co.  
J. M. Hill  
Bridges Aircraft Sales &  
Service, Inc.  
Randy Hinkle  
Smith's Sweet Feed Mills  
L. E. Smith  
Pan American Mills  
Billy Smith  
Border's Pure Milk Co., Inc.  
Forest Borders  
Jim & Gil's Men's Shop  
Jim Bogle  
H. C. Hanson Construction  
H. C. Hanson  
Master Div. of Koehring Co.  
Lloyd Williford  
Bowling Green Manufac-  
turing Co.  
Jack Hawkins  
H. F. Warren & Co. Ins.  
Sebree, Ky.  
Sebree Deposit Bank  
Sebree, Ky.  
Electric Plant Board  
Henry Carlisle  
J. T. Patterson & Son  
Bowling Green, Ky.  
Southern Optical Co.  
Charles B. Smith  
Nehi Bottling Co.  
Ted Middleton  
Sonny Haynes Golf Shop  
Sonny Haynes  
Randolph, Hale & Meredith,  
Inc.  
Charles W. Meredith  
Hancock Furniture Co.  
Richard K. Dowse  
Bowman Office Supply  
Harry Bowman  
Brown's Dairy Foods, Inc.  
Bowling Green, Ky.  
Haxby News Company  
Edward E. Vanzandt  
R. E. Summers Construction  
R. E. Summers  
Burks Pontiac Company  
Norman C. Burks  
Olde Fort Truck Stop  
Bowling Green, Ky.  
All American Shop, Inc.  
Benny Jagers  
Western Gateway  
Shopping Center  
Buddy Stewart  
Golden Branding Iron  
Ada and Bill Williams  
Adamson Service Station  
Melvin R. Adamson  
Baldwin Bootery  
Robert L. Baldwin  
Bowling Green Bank  
& Trust  
Roland Fitch, Pres.  
James R. Meany  
& Associates  
Bowling Green, Ky.  
The Sam Pushin Co.  
C. V. Nance  
Ches Johnson Photo Center  
Ches Johnson  
Gordon Smith & Co. Inc.  
Gilbert Smith

YOUR HOST

FROM COAST TO COAST®



31-W By-Pass

Join Us For

Lunch

OR

Dinner

122 Rooms

842-9453

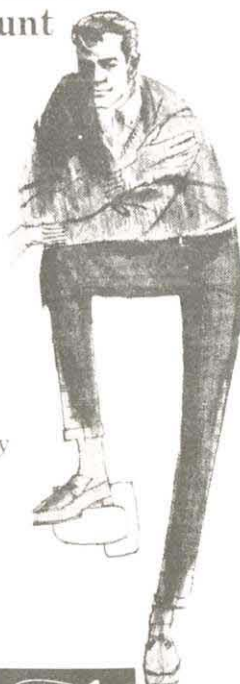
## MARK OF DISTINCTION 20 20-WIN SEASONS

Western Kentucky University has fashioned more than 20-victory seasons than any other major college basketball team in the nation. The Hilltoppers have compiled 20 or more wins in 20 of the 48 seasons in which they have fielded basketball teams.

That amazing record includes one string of 10 straight 20-win seasons, beginning in 1933-34 and continuing through the 1942-43 season.

Team	No. Times
WESTERN KENTUCKY	20
Kentucky	18
St. John's (N.Y.)	15
Oklahoma State	15
Duke	15
Utah	14
Washington	14
Oregon State	13
Long Island	13
Dayton	13
North Carolina State	12
Hamline	12
Montana State	12
Bradley	12
North Carolina	12
Holy Cross	11
Louisville	11
Seattle	11
Notre Dame	10
Cincinnati	10

Game Time or  
Anytime... Style  
and Comfort  
Count



Higgins  
Slacks  
look right  
because they  
fit right!  
Up to the  
minute  
styling.



Sold exclusively at PUSHIN'S

## HEAR HIGH SCHOOL BASKETBALL ON THE ALL-AMERICAN STATION

Bringing You  
Top Area Games  
District Tourney  
Regional Tourney

With

Kirb Ramsey  
Steve Catron

Also

Kentucky H. S.  
State Tourney

# WLBJ

1410 KHZ 5000 WATTS

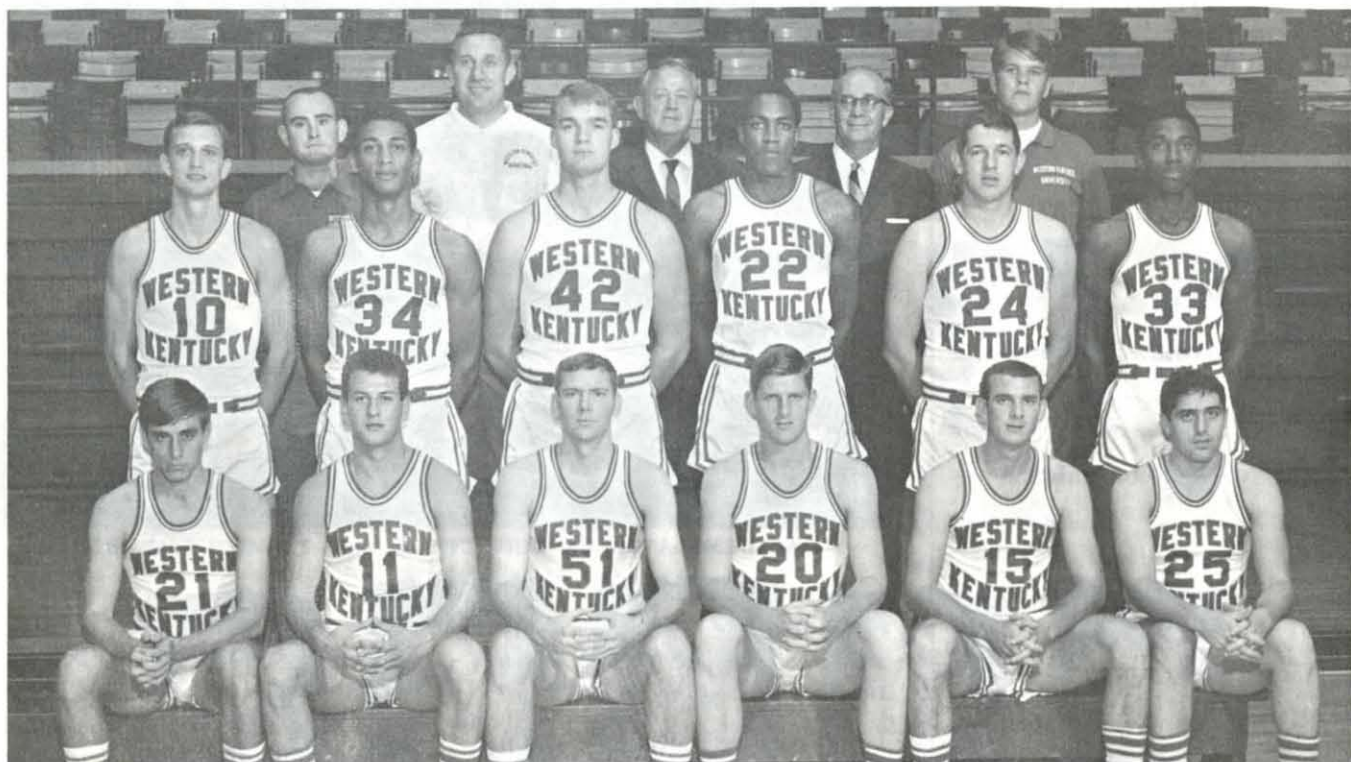
BEST IN MUSIC FOR  
YOUR LISTENING  
PLEASURE

WLBJ — FM  
96.7 MHZ

Official Basketball Program

# WESTERN KENTUCKY UNIVERSITY

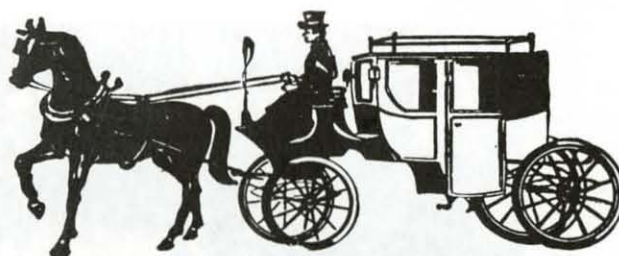
## 1967-68 Varsity Basketball Squad



Front Row—Butch Kaufman, Charles Selvy, Joe Mac Hill, Johnny Russell, Rich Hendrick, Mike Fawcett. Second Row—Wayne Chapman (Co-Captain), Greg Smith (Co-Captain), Wayne Bright, Walker Banks, Norm Weaver, Paul Haskins. Third Row—Larry Williams, Manager; John Oldham, Head Coach; Ted Hornback, Athletic Director; Dr. W. R. McCormack, Team Physician; Robert Walden, Manager.

for the man who thinks 'naturally'

# COACHMAN



## Ltd, Inc.

"men's traditional clothier"

1159 College St.

Pres. Pete Morris

Deans Gate Suits

Cox Moore Sweaters

Corbin Trousers

Canterbury Belts

Sero Shirts

Royall Lyne Toiletries

## DOLLAR GENERAL STORE

We say  
we have special values.

We say  
we have bargains.

We say  
we welcome you.

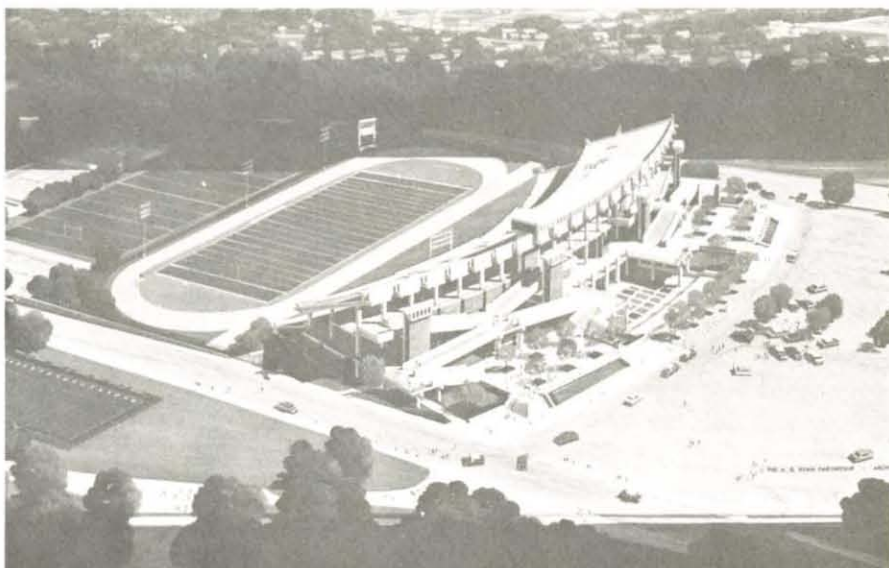
We request  
that you visit our store  
to see  
our values and bargains.

We especially request  
that you visit  
DOLLAR GENERAL  
STORE  
310 East Main Street  
to see  
if you are welcome.

We are  
a self-service store,  
but if you cannot find  
the item you want,  
please ask an employee.

## DOLLAR GENERAL STORE

## TOPPER ATHLETICS LOOKS TO FUTURE



ACADEMIC-ATHLETIC BUILDING NO. 2—L. T. SMITH STADIUM

The dream of completing a central athletic complex for Western Kentucky University is soon to be fulfilled.

With the construction of a new football stadium and the clearing of land south of the existing Academic Athletic Building No. 1—E. A. Diddle Arena, Western's athletic, physical education, and recreational facilities are being expanded for future needs.

Under the supervision of Director of Athletics Ted Hornback, Western's athletic teams are assured of having championship facilities to match the calibre of teams that have already brought numerous championships to the Hilltop campus.

When completed, the entire athletics complex will consist of a 16,400 seat football stadium that can be expanded to 25,000, a track with an all-weather surface, a practice field, a baseball field, and 12 tennis courts with all-weather surfaces in addition to the existing E. A. Diddle Arena—home of Western's basketball team.

The Academic-Athletic Building No. 2—L. T. Smith Football Stadium is a multi-purpose structure, including classrooms, private offices, a two-story gymnastics room, physical education and athletic shower and locker facilities, public rest rooms, concession stands, first-aid room, and an 80-seat pressbox.



E. A. DIDDLE ARENA

# WESTERN KENTUCKY UNIVERSITY



Clem Haskins  
1965, 1966, 1967



Darel Carrier  
1964



Bob Rascoe  
1962

# BASKETBALL ALL AMERICANS



Tom Marshall  
1953, 1954



Art Spoelstra  
1953



Rip Gish  
1951



Bob Lavoy  
1950



John Oldham  
1949



Odie Spears  
1948



Dee Gibson  
1948



Don Ray  
1948



Oran McKinney  
1943



Carlyle Towery  
1940



Wm. McCrocklin  
1938

You Don't Have To Be An All-American To Dress Like One

## The All-American Shop

In The Western Gateway Shopping Center

### HERE'S OUR STARTING LINEUP

- SERO SHIRTS
- CLUBMAN Sport Coats
- HIS Sports Wear
- BOTANY 500 Suits
- FREEMAN Shoes
- MANHATTAN Shirts & Sweaters
- CANTERBURY Belts
- GOLD CUP Socks
- WEMBLEY Ties
- BRENTWOOD Sweaters
- RESILIO Ties

### MEET OUR COACHING STAFF

Clem (The Gem) Haskins — Bennie Jaggers  
Dale Jaggers — Leo Wells — Buddy Stewart



Bennie Jaggers

Clem Haskins

Ed Diddle

# Jerry's

## RESTAURANTS

### WESTERN KENTUCKY UNIVERSITY SCHEDULE

Dec. 1-2—OVC Tourney at Nashville, Tenn.	Jan. 15—At Morehead*
Dec. 6—LOUISIANA COLL.	Jan. 17—Dayton
Dec. 9—ST. FRANCIS (Pa.)	Jan. 20—LaSALLE
Dec. 12—BUTLER UNIV.	Jan. 29—At Austin Peay*
Dec. 15-16—Cable Car Classic at San Francisco, Calif.	Feb. 3—At Middle Tenn.*
Dec. 28-29—All-Sports Assoc. Classic at Dallas, Tex.	Feb. 5—MURRAY*
Jan. 6—TENNESSEE TECH*	Feb. 10—At East Tenn.*
Jan. 8—EAST TENNESSEE*	Feb. 12—At Tenn. Tech*
Jan. 13—At Eastern Ky.*	Feb. 17—MOREHEAD*
	Feb. 19—EASTERN KY.*
	Feb. 24—At Murray*
	Feb. 26—AUSTIN PEAY*
	March 2—MIDDLE TENN.*

\*Indicates OVC Game.

All home games captialized, start at 7:30 p.m. (CST)

"AFTER THE GAME  
... GO **Jerry's**!!"

31-W By-Pass

Russellville Road

