


Summer 2002

## UA9 Investing in the Spirit

WKU Development & Alumni Relations

Follow this and additional works at: [http://digitalcommons.wku.edu/dlsc\\_ua\\_records](http://digitalcommons.wku.edu/dlsc_ua_records)

 Part of the [Advertising and Promotion Management Commons](#), [Business Administration, Management, and Operations Commons](#), [Finance and Financial Management Commons](#), and the [Higher Education Administration Commons](#)

---

### Recommended Citation

WKU Development & Alumni Relations, "UA9 Investing in the Spirit" (2002). *WKU Archives Records*. Paper 2035.  
[http://digitalcommons.wku.edu/dlsc\\_ua\\_records/2035](http://digitalcommons.wku.edu/dlsc_ua_records/2035)

This Newsletter is brought to you for free and open access by TopSCHOLAR®. It has been accepted for inclusion in WKU Archives Records by an authorized administrator of TopSCHOLAR®. For more information, please contact [topscholar@wku.edu](mailto:topscholar@wku.edu).

# Investing in the Spirit

THE CAMPAIGN FOR WESTERN KENTUCKY UNIVERSITY

## INSIDE

2

### Campaign Basics

Overview of the Campaign's progress

3

### Annual Giving

Corporate matching program

4

### People

Mahurin Gifted Studies Professorship  
Alumni Leaders Scholarship Program  
Gifts of Music Recital

6

### Places

Guthrie Bell / Clock Tower dedication  
E. A. Diddle Arena renovation and luxury suites

8

### Programs

Zuheir Sofia gift to International Center  
Public Broadcasting

10

### Planned Giving

Life Income Gifts

11

### Campaign Extra

New Cherry Society members and scenes from the Gala

12

### Volunteer Spotlight

Bud Layne

Principal Photographer:  
Sheryl Hagan-Booth

© Copyright 2002  
Western Kentucky University

## WKU Reaches \$78 Million

*Investing In The Spirit* Campaign Goal A Year Early Sets New Goal At \$90 Million

When Western Kentucky University President Gary Ransdell announced on April 27, 2000, that WKU would raise \$78 million in its first comprehensive campaign, he had no doubt the goal would be met. With a little more than a year left in the five-year campaign, Western has passed that goal and, at the

vision and our plan for the University, our message was well received. Alumni, friends, faculty and staff all stepped forward to help us achieve our vision of being the best comprehensive university in Kentucky and among the best in the country."

At the May 10 President's Circle Gala, the University announced a cam-



Campaign Co-Chair Mary Nixon, WKU President Gary Ransdell, and Campaign Co-Chair Don Vitale celebrate the announcement of the new goal at the annual President's Circle Gala.

recommendation of the Campaign Cabinet, he's raising the stakes - to \$90 million.

"We were confident that we would meet our goal in the *Investing in the Spirit* campaign by June 30, 2003," Dr. Ransdell said. "What we discovered was that as we told the Western story, as we articulated our

paign total of \$78,875,834, yet there are still some goals that are unmet and new priorities that have arisen.

"We're not raising money for the sake of raising money," Dr. Ransdell said. "We have a vision for this University and a plan to reach that vision. Meeting these goals is an important part of that plan."



Dear Friend of Western,

This has been an exciting two years for Western Kentucky University. When we announced our ambitious goal of \$78 million in April 2001, we knew the Western Family would come



Thomas S. Hiles,  
 Vice President for  
 Institutional Advancement

through to support the *Investing in the Spirit* Campaign. But to have reached the \$78 million goal with a year remaining in the Campaign is a wonderful accomplishment.

Still, at the recommendation of our Campaign Cabinet, we are raising the goal to \$90 million. Though we have raised a total of \$79 million thus far, many individual goals remain unmet and new needs have arisen. Thus, the original

format of the Campaign – people, places, and programs – will continue until June 30, 2003, with an emphasis on supporting endowed faculty positions and scholarships.

*Investing in the Spirit* has always been about helping Western achieve its goal to be the “best comprehensive public university in the state and among the best in the nation.” We identified the needs of the University and set goals to meet those needs. We have met and even exceeded those goals in many areas, such as student scholarships, but we need your help on others.

One of the needs is additional endowed faculty support, including adding to the 20 endowed professorships established during the Campaign. Our belief is that a strong faculty will enhance the entire University. Additional support is also needed for capital projects and campus enhancements. While much attention is focused on the Campaign total, we are trying to match donors with our areas of greatest need.

Endowments are a permanent key to the long-term stability and survivability of the institution. The income from these endowments, whether designated for scholarships or faculty positions, will continue to grow and support those programs throughout the remainder of Western’s history.

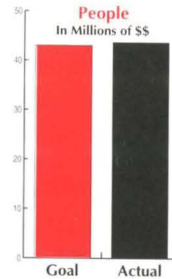
The support we have received from our alumni and friends during this campaign will have a lasting impact on your University and will allow Western to recruit and retain quality faculty and students. Thank you for the part you have played and will play in this Campaign. We are so grateful.

Sincerely,

Thomas S. Hiles

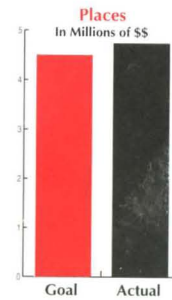
# Goals

AS OF 6/30/02  
 GOAL ACTUAL  
 In Millions of Dollars



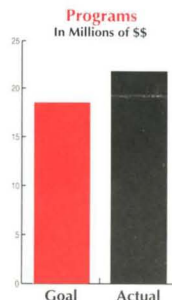
## People

Student scholarships, fellowships, and awards . . . . .	17	22.41
International education endowment for students . . . . .	1	0.9
Endowed faculty positions. . . . .	20	15.87
Visiting scholars endowment. . . . .	2	1.7
Faculty excellence endowments and funds . . . . .	3	1.3
<b>People Total . . . . .</b>	<b>43</b>	<b>43.42</b>



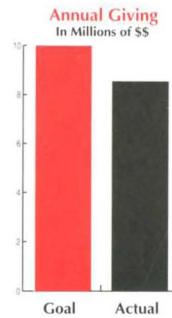
## Places

Main campus facilities . . . . .	2.5	3.41
Extended campus facilities . . . . .	1	.73
Campus beautification . . . . .	1	.60
<b>Places Total . . . . .</b>	<b>4.5</b>	<b>4.74</b>



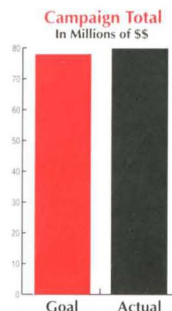
## Programs

Academic program endowments . . . . .	5	7.06
Gifted Studies . . . . .	2	1.63
University Libraries. . . . .	1	.69
Kentucky Museum . . . . .	1	.60
Public Broadcasting . . . . .	1	1.52
Student Life . . . . .	1.5	1.18
Cultural enhancement. . . . .	1	.12
Instructional technology . . . . .	1	.25
Athletics . . . . .	5	8.74
<b>Programs Total . . . . .</b>	<b>18.5</b>	<b>21.83</b>



## Annual Giving

Restricted and unrestricted support. . . . .	10	8.55
--	----	------



**Other . . . . . 2 1.16**

**Campaign Total . . . \$78 \$79.71**



## Corporate Matching Programs

FREE, FREE, FREE! That particular word always catches the attention. We always wonder how we can take advantage of such an offer. There is another word that should be equally attention grabbing: MATCH, MATCH, MATCH! What? You never thought of that one before? Well, as someone who normally makes charitable gifts, you will most likely want to keep it in mind. We are speaking specifically of corporate matching gifts. In many ways, matching gifts are the best-kept secret in charitable giving. Many employees are not aware. Many that are aware simply write their check without "going to the trouble" of obtaining the match. Others think there must be some "catch" to obtaining the money for their charity.

Hundreds of companies nationwide offer charitable matching to employee gifts. It is truly a win-win-win situation. You win because the match increases your gift. A match of 1 to 1, 2 to 1, or occasionally 3 to 1

has an immediate and important impact on the program you choose. Your employer wins because many corporations see matching as the best way to make a gift. Corporate charitable dollars will directly impact the causes their employees find important. Western Kentucky University and others win due to an increase in gifts.

Awareness and participation are the keys in corporate matching programs. Does your employer offer a matching program? The answer is usually as simple as asking your human resources office. If you're having difficulties, Western Kentucky University can assist you in this matter as well. Are you participating? Many donors are aware of access to a matching program, but don't utilize it.

### Top 10 Matching Companies for WKU

Tricon Foundation	\$10,050.00
The May Department Stores	\$7,940.00
State Farm Companies Foundation	\$6,082.00
Verizon Foundation	\$7,125.00
Wachovia Securities Foundation	\$3,550.00
Williams Gas Pipeline Texas Gas	\$5,025.00
Alcoa Foundation	\$3,000.00
BellSouth	\$4,511.00
Price Waterhouse Coopers Foundation	\$5,000.00

\*2000 - 2001 Fiscal Year

Western would like to help you change that as well. Obtaining the matching gift normally requires a simple form from your employer. Again, if problems present themselves, Western is here to help.

You always remember FREE, now add MATCH to your memorable lexicon. Ask your employer. Think about it when you write a check. Ask us at Western. Remember, corporate matching is a win-win-win and an easy way to increase your charitable support.



Mary Nixon, co-chair for the *Investing in the Spirit* Campaign and vice president for Shared Services at Tricon Financial Services in Louisville, has benefited from matching funding in making her gift for the *Mary R. Nixon Professorship in Accounting*.

I am very grateful to my employer and all employers that provide and promote matching gift programs. I believe matching gift programs are a big motivator for givers and provide incredible leverage for both the giver and the recipient organization."

- Mary Nixon



## Mahurin Family Creates Professorship for The Center for Gifted Studies

Pete and Dixie Mahurin of Bowling Green recently made a leadership gift to The Center for Gifted Studies to create The Center's first endowed professorship. According to Center Director Julia Roberts, the *Mahurin Endowed Professorship in Gifted Studies* will enhance the visibility of The Center for Gifted Studies, and it will ensure that The Center for Gifted Studies will continue its quality work for generations to come.

"The professorship will enhance the capacity of The Center by providing support for research and professional development focused on gifted education," said Roberts. "It will make it possible to bring experts for consultation for research and to conduct seminars."

Dixie Mahurin states, "The investment we have made in children is certainly the best use of our money. We expect this investment to have a great return."

"This gift certainly furthers us in reaching our vision to become an internationally preeminent center," Roberts said. "Few universities in the country have an endowed professorship in gifted education."

The *Mahurin Endowed Professorship* is designated for the

director of The Center for Gifted Studies, and Roberts is delighted to fill this role. "What an honor this gift is, and what a statement it makes for the future of The Center," she said. "No words can express how much this gift means for reaching our goals for children who are gifted and talented, their parents, and educators."

Ties between the Mahurin family and The Center for Gifted Studies are numerous and have continued over

many years. Pete serves as a member of the Advisory Board for The Center for Gifted Studies. Daughter Sarah Jo Mahurin, niece Amber Cann Sapp, and nephew John Michael Mahurin have participated in various programs provided by The Center, and both Amber and Sarah Jo have been counselors for the summer residential programming offered by The Center. Sarah Jo is a recent graduate of Harvard University, and has accepted a job in admissions at Tuft University in Boston. Amber graduated from the University of Kentucky with the Doctor of Pharmacy degree, and John Michael will be a freshman at Oberlin College.

Roberts, the first *Mahurin Professorship* recipient, was recently re-elected to the Board of Directors of the National Association for Gifted Children and appointed to the Executive Committee as the Finance Secretary. She has also been named as the first recipient of the National Association for Gifted Children David W. Belin Advocacy Award.



Pete and Dixie Mahurin with daughter Sarah Jo celebrate their recent contribution to The Center for Gifted Studies

**T**his gift certainly furthers us in reaching our vision to become an internationally preeminent center. Few universities in the country have an endowed professorship in gifted education.

**- Julia Roberts, Director for The Center of Gifted Studies**



## Alumni Leaders Scholars Program

The Alumni Leadership Scholars program was established more than five years ago. The original concept was patterned after the Jefferson Scholars program at the University of Virginia.

The program funds scholarships for 14 students through an endowment housed in the College Heights Foundation. Each student receives a four-year renewable scholarship totaling \$4,000. The recipients must remain in good standing with the University and attend the required amount of leadership training in order to renew the scholarship each year.

Currently, four of the scholars are designated as the *Calvin M. and Rosella Spivey Isbell Scholars* and four other scholars are designated as the *Luther Family Scholars*. Two scholars are designated as the *Bob and Norma Jean Kirby Scholars*. And, one scholar from Northern Kentucky is named the *Tom Ellis Scholar*. In addition, the Society of African American Alumni funds scholarships for four students in the program.

Candidates are selected based upon proven academic achievement and leadership example. Eight incoming freshmen are selected for

interview from thousands of nominees each year. From the interview process, four candidates are selected to enter the Alumni Leadership Scholars program. The group of recipients receives leadership training monthly during the academic year. Topics of discussion include a personal style inventory, leadership fundamentals, government and leadership, the call to leadership, campus visioning, and personal leadership management. Session leaders consist of campus administrators, government officials, and community members trained in leadership development.

## Students Present the Gift of Music

The Department of Music "played" tribute to its scholarship benefactors with a musical recital on April 19, 2002. *The Gift of Music Recital: Notes of Thanks to Scholarship Donors* was performed by recipients of the 13 music scholarships at Western. This is the first recital of its kind at Western.

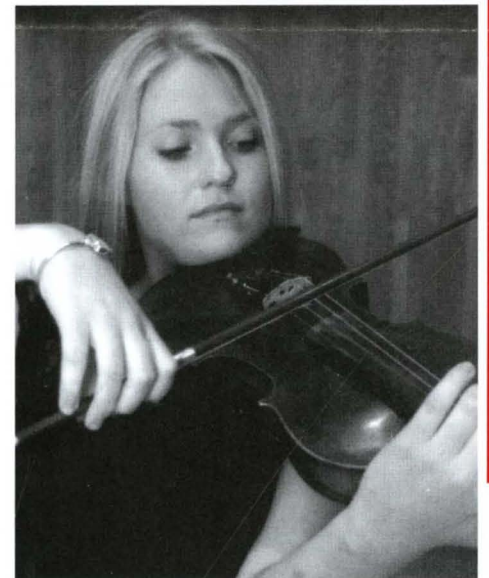
"This is our way of thanking our scholarship

donors," said Dr. Mitzi Groom, head of the Music Department. "The donors of these scholarships make college attendance not just a dream but a reality," she said.

Western currently has 13 scholarships for music students. They are:

- Jerry Baker Scholarship
- Dr. Kent Campbell Scholarship
- Howard Carpenter String and Piano Scholarship
- Blanche and Austin Duckett Strings Music Scholarship
- Thelma Griggs Piano Scholarship
- Hugh F. Johnson Music Scholarship
- Music Department Faculty Scholarship
- Edward J. Pease Memorial Scholarship
- Seymour Spiegelman Scholarship
- Dr. Samuel W. and Jeane Payne Tinsley Music Scholarship
- Nelle Gooch Travelstead Scholarship

Charlie Abston, recipient of the *Ida Weidemann Scholarship*, performs the "Sonata for Bass Trombone, Allegro non Troppo" at the recital.



Julia Raymer, recipient of the *Dr. Samuel W. and Jeane Payne Tinsley Scholarship* and the *D & S Vitale String Scholarship*, performs at the Gifts of Music Recital.

- D. & S. Vitale String Scholarship
- Ida Weidemann Scholarship

The Music Departments plans to hold the The Gifts of Music Recital on an annual basis to allow the donors of these scholarships to meet the student recipient.





# WKU Dedicates Guthrie Bell Tower, Celebrates Freedom



(L to R) Guthrie brothers - Greg, Brett, Chris, and Kent - and WKU President Gary Ransdell unveil a replica of the Guthrie bells.

The Guthrie Bell Tower, Western Kentucky University's newest landmark, was dedicated in May as a memorial to freedom and those who gave their lives defending it. The 125-foot tower, made possible by a gift from the Lowell Guthrie family and Trace Die Cast, Inc., honors the memory of Guthrie's brother, Sgt. 1st Class Robert Guthrie, who was killed in the Korean War, and all those associated with Western who lost their lives in service to this country.

staff and students, community leaders, and military veterans.

Guthrie recounted how his uncle grew up in Alabama, became an Eagle Scout and wanted to serve in the military. "My uncle Bobby's sacrifice and those of many others have helped preserve this land of opportunity and the American dream," he said.

Granite etchings include images of Robert Guthrie and other veterans associated with Western, including former president Dero Downing, retired professor Bob Ward, Bob Kirby, Wendell Strode, and Capt. Al D. Ralston.

The Guthrie Bell Tower is not "a war memorial though we must be reminded of war," Brett Guthrie said. "But my uncle died for a cause; he died for freedom and freedom is not free. So we wish this to be viewed as a freedom memorial."

WKU President Gary Ransdell assisted Lowell Guthrie's sons in unveiling a statue of their uncle that stands at the base of the tower, sculpted by WKU alumnus Russ Faxon, and presented the family with a replica of the bells housed in the tower.

Even though the ceremony honored Robert Guthrie, "in reality we honor more than a single fallen hero," U.S. Sen. Mitch McConnell said. "We pay tribute to the freedoms he and his fellow soldiers died protecting. Further

still we pay homage to what Americans can achieve when they take full advantage of those freedoms," he said, noting the success of Trace Die Cast.

"Now more than ever it is incumbent upon us to not only recognize the benefits and responsibilities that come with living in a free society but to honor and to keep alive the memory of those who have made the ultimate sacrifice," said U.S. Sen. Jim Bunning. "Today we dedicate this monument as a tribute to their patriotism, their spirit and their sacrifices. We lift our faces to watch it soar to the sky. We can take heart in the knowledge that Robert Guthrie and tens of thousands of others we honor here are surely smiling down on us today."

America's freedom is challenged on an ongoing basis, U.S. Rep. Ron Lewis said. "But it's so comforting to know that when we have those challenges that the American people are willing to step up to meet those challenges," he said. Those who served in Korea and who serve America today around the world are not warriors but peacemakers, Lewis said. "They went to Korea to preserve the peace, to keep the peace, to allow us to enjoy peace," he said.

The granite benches surrounding the bell tower include quotations from several historical figures. Some of the more notable inscriptions include the following:

"The advance of human freedom,

*continued on page 7*



WKU President Gary Ransdell (right) thanks Lowell and Carolyn Guthrie for their support during a family picnic the evening before the dedication service.

Speaking on behalf of the Guthrie family, state Sen. Brett Guthrie recalled the supreme sacrifice his uncle made in Korea a half-century ago. "We never knew him, but our parents made sure we never forgot him," he told a crowd that featured Western faculty,





## Diddle Arena Luxury Suites:

# An Exciting Addition for the 2002-2003 Season

Of all the exciting building projects on the Hill, there is probably none as thrilling as the renovation of

### Luxury Suites have been leased to the following companies and individuals:

- Alliance Corporation, Houchens Foundation, Rafferty's, and Kerrick Grise, Stivers, and Coyle
  - BB & T
  - Gary Carver, Denny Kirtley, and Joe Ben Tucker
  - Commonwealth Broadcasting
  - English, Lucas, Priest and Owsley
  - Franklin Bank & Trust
  - Houchens Industries
  - Mike and Belle Hunt, Van Meter Insurance, and 440 Main
  - Martin Management Group
  - National City Bank
  - Pepsi
  - South Central Bank
  - US Bank
  - Wyatt, Tarrant & Combs, LLP and Neace Lukens Insurance Agency
- Two additional suite leases are pending at the current time*

the historical E.A. Diddle Arena. Planned improvements to Diddle Arena include installation of air conditioning, new seating, video boards and the construction of luxury boxes. Phase one of the renovation program will allow the arena to be available for use during the 2002-2003 basketball season.

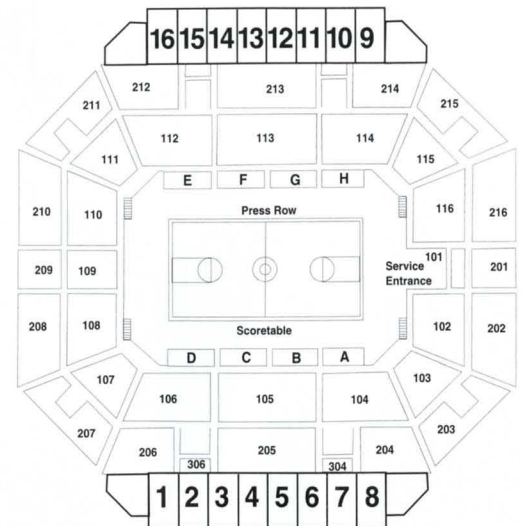
One of the exciting new improvements to the arena will

be the addition of 16 luxury suites. "Diddle Arena has existed for nearly four decades without any significant maintenance or renovation," said Dr. Wood Selig, WKU director of Athletics. "The plan to renovate the arena will preserve our rich and storied history, while offering our fans and student-athletes 21st-century luxuries and conveniences. As is typical with many facility construction projects, luxury suite revenue will provide a significant portion of the funding necessary to renovate Diddle Arena."

Selig said eight suites will be located on each side of the court, running baseline to baseline, just 17 rows from the playing floor. "Because the Diddle suites are in such prime proximity to the action, each suite patron is guaranteed a rewarding, in-person viewing experience while at the same time provided with the comforts of a family living room," he said.

WKU President Gary Ransdell agrees. "The private luxury suites are an essential part of the renovation plan," he said. "Those who lease the suites will find amenities unparalleled in this market."

Selig says the new suites will be second to none, and the renovation of Diddle Arena will make it the finest indoor athletic facility in the Commonwealth. "No attention to detail has been spared."



### Luxury Suite Amenities

- 400 square feet of space
- Two television monitors, with in-house television potentially offered for each game as well as local cable or Direct TV
- Service area, refrigerator, storage cabinets, coat closet, bar stools, table and chairs, and sidebar
- 16 leather stadium seats
- Private suite area restrooms and private elevator access to the suite area

## WKU Dedicates Guthrie Bell Tower continued from page 6

the great achievement of our time and the great hope of every time, now depends on us. We will not tire, we will not falter and we will not fail." - George W. Bush, September 20, 2001  
"America's strength is its diverse

people, just institutions, shared values, and deep and abiding faith in God. No terrorist attack will ever extinguish the flames of freedom and democracy." - U.S. Senator Mitch McConnell, September 11, 2001.

"The ultimate measure of a man is not where he stands in moments of comfort and convenience, but where he stands at times of challenge and controversy." - Dr. Martin Luther King Jr., "Strength to Love"



## WKU International Center

### Named for Sofia, Downing



Zuheir Sofia (right) and Dr. Dero Downing are honored through the naming of the International Center.

As part of the Gala weekend activities, Western announced a legacy gift in support Western Kentucky University's International Center, which now bears the name of a former international student and his longtime friend. The center was renamed for Zuheir Sofia and Dero Downing during a special a ceremony on May 9.

Zuheir and Susan Sofia of Columbus, Ohio, made a commitment of \$500,000 in support of the Office of International Programs. This gift will provide \$50,000 for capital improvements at the Center and \$450,000 to create the *Zuheir and Susan Sofia Fund for Excellence Endowment*, which will support scholarships and a number of other important priorities.

"This gift demonstrates Mr. Sofia's devotion to Western and to his longtime friend, Dr. Dero Downing, a former WKU president who provided assistance and encouragement to Mr. Sofia while he was a student," Hiles said. "Thus, the Center is now renamed the Zuheir Sofia-Dero Downing International Center."

Hiles said the naming is particularly significant as the building served as the president's home during Dr. Downing's tenure.

"Dr. Dero Downing was president of Western Kentucky University when I was a student at Western," Sofia said. "I am forever grateful for his compassion, support and

understanding of the need and the aspiration of international students. His vision, leadership, courage, knowledge, and commitment to Western made a tremendous impact on me as well as my classmates and the Western Kentucky University community at large."

Sofia said that since his graduation Dr. Downing and his wife, Harriet, have taken a genuine interest in his family.

"We have become very close, as Susan and I highly treasure our friendship with Harriet and Dero," Sofia said. "To us they are simply wonderful human beings. I felt it is only fitting to name the house Dero has lived in for many years as the *Zuheir Sofia-Dero Downing International Center*. It is a small tribute to one of Western's most outstanding educators. Also this gift is a small tribute from the Sofia family to express our genuine pride and sincere appreciation of the wonderful education I received at Western."



The Sofia family poses at the recent dedication of the Zuheir Sofia - Dero Downing International Center.



## Western's Public Broadcasting

Western brings a lot to the communities it serves, and the communities bring a lot to Western. There's no better example of this than the success of Western's Public Broadcasting.

Western's Public Radio serves more than 65 percent of the Commonwealth, plus much of Northern Tennessee and Southern Indiana. In many of these communities, it's the only station that provides news from National Public Radio, cultural and arts information, and a variety of musical entertainment from classical to bluegrass to jazz.

Can you imagine a moment more exciting than the final three seconds of the Toppers' semi-final game in the 2002 Sun Belt Basketball Tournament? WKYU-PBS played a key role in giving the Toppers time to win and fans at home saw it live, thanks to WKYU-PBS and its sports broadcasting partner HSSN. From basketball to Barney, MainStreet to Antiques Roadshow, WKYU-PBS is the only local public television station in Kentucky.

### Members Matter

The very existence of public radio and television depends on one thing.... the public. Membership and underwriting support are critical in



program sources that entertain, inform, and educate in the non-commercial world of public broadcasting.

Annual memberships pay for the programs and matter most in keeping these programs on the air.

### Technology Update – The Future of Western's Public Broadcasting

It's hard to imagine a time when the pocket calculator was considered modern technology and color TV was luxury. Transistor radios were a must and no one had even thought of touch-tone, the cordless phone, the cell phone or wireless web.

All this is just the beginning of the advances in technology that are coming in the next decade. Digital radio, interactive television, HDTV, web-casting.... all new technology for the informed and educated consumer of the 21st century. Western's Public Radio and WKYU-PBS are planning

the greatest of which is obtaining the necessary funding to meet the increased mandates of changing technology. Membership support provides funds for programming costs; however, it falls short in meeting the long-term technology needs.

For the consumer, digital TV and radio will mean a whole new world of opportunity and enjoyment. For Western's Public Radio and WKYU-PBS, it means eventual replacement of every piece of broadcast and studio equipment. Federal funds are available as a match for local funds that are secured.

### Major Gifts – A Major Difference

So what happens when a lifetime of giving and support comes to an end? What amount of federal matching support will be secured for the future needs of Western's Public Broadcasting? These are questions that can be answered with a major gift for Western's Public Radio and/or WKYU-PBS.

A gift of \$10,000 or more can serve the donor now and will continue to support the community through better technologies, increased capabilities, and endowed programs.

A major gift to Western's Public Radio and/or WKYU-PBS can, and will, make a major difference for Western, for the communities we serve, and for each of us.



meeting the programming costs associated with public broadcasting. NPR, PBS, PRI, APT...these are just acronyms to some, but they are

and preparing now for the changes to best serve the audience of the future.

With changes come challenges for Western's Public Broadcasting, the



## Making a Life Income Gift



James W. Brite, Sr. and Mary Carolyn Wolfe Brite

James W. Brite, Sr. and his wife, Mary Carolyn Wolfe Brite, have made a provision in their estate plan to provide annual income to establish a scholarship fund that will benefit students pursuing degrees in nursing and in areas within the Gordon Ford College of Business.

According to H. Alexander Downing, president of the College Heights Foundation, the gift is being funded through the creation of two unique charitable remainder unitrusts that will benefit Western and several

different charities as well. Currently, the trust has a value of approximately \$50,000 in annual income.

"Mr. and Mrs. Brite have made wonderful contributions to improving the quality of life in the Bowling Green community," Downing said. "This generous estate gift is further evidence of their devotion to Bowling Green and to Western Kentucky University. They will create a permanent source of assistance and encouragement for Western students enrolled in the College of Business and in the Department of Nursing."

Mr. Brite, owner of Hartland Furniture in Bowling Green, said, "My wife and I wanted to provide opportunities for students choosing

careers in nursing and business. We know that there will always be a need for nurses in our community, and we are pleased that we will be helping to fulfill that need in the future."

Gifts that provide income can be an excellent tool in retirement planning. These gifts allow you to make a significant contribution to Western while receiving benefits such as:

- Income payments for your life or the life of your spouse or others
- The probable elimination of capital gains tax on appreciated property
- An income tax deduction
- The probable reduction of estate taxes and probate costs
- The personal fulfillment of directing your gift and supporting Western during your lifetime

To learn more about making a life income gift, please contact the WKU Development Office at (270) 745-4494 or the Office of the College Heights Foundation at (270) 745-4597.

**W**e know that there will always be a need for nurses in our community, and we are pleased that we will be helping to fulfill that need in the future.

**- James Brite**

*The  
Society  
of  
1906*

*The Society of 1906 is the recognition society for individuals who make Western Kentucky University a part of their estate plan by including a bequest to the University in their wills, by participating in any of the various lifetime income plans the University has avail-*

*able, by designating the University as beneficiary of a trust, by naming the University as beneficiary of retirement plan assets, or by making the University beneficiary of insurance policies of which ownership has been assigned to the University.*

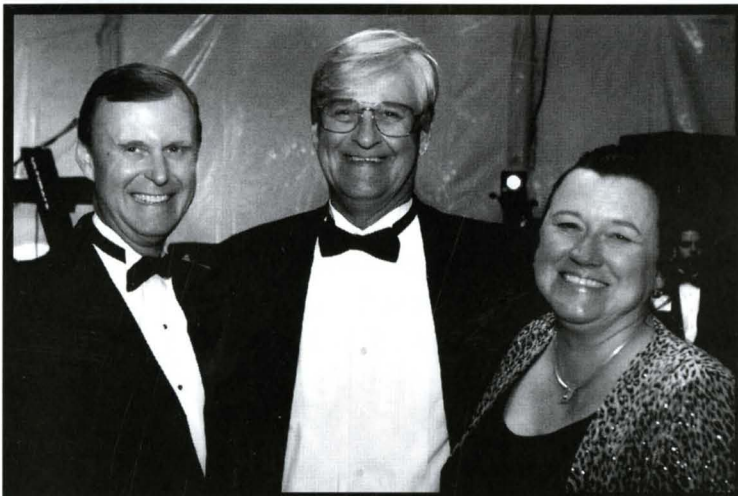




Cliff Todd (center) and his daughter, Stacey Lenz, accept the award for reaching the Spirit of Western level of the Henry Hardin Cherry Society from President Gary Ransdell.



Rick Seadler, president of National City Bank, is congratulated by President Gary Ransdell as a new member of the Spirit of Western level of the Henry Hardin Cherry Society.



President Gary Ransdell congratulates Drs. Dennis and Nancy Minix as new members of the Spirit of Western level of the Henry Hardin Cherry Society.



Western Kentucky University celebrated another successful year during the fourth annual President's Circle Gala held at Western's campus on May 10, 2002. During the evening's festivities, new members of the Cherry Society were recognized. The Cherry Society honors the leadership and lifelong dedication of the University's most generous supporters. New inductees during the 2001-2002 academic year are listed below.

**New Spirit of Western Members**

- (\$1 million or more in lifetime giving to WKU)*
- Bowling Green Properties, LLC
- Drs. Nancy and Dennis Minix
- National City Bank
- J. Clifford Todd

**New Colonnade Members**

- (\$500,000 or more in lifetime giving to WKU)*
- Whit and Nick Crawford
- Insight Communications
- Dr. Walter Scott
- Susan and Zuheir Sofia
- Tennessee Valley Authority

**New Cornerstone Members**

- (\$100,000 or more in lifetime giving to WKU)*
- Harriett and Jim Beckley
- BellSouth
- Kathleen and Vince Berta
- Bowling Green Area Convention and Visitors Bureau
- Bowling Green Noon Rotary Club
- David F. Broderick
- Barbara Jo Terry Porter
- Audrey and Tom Redford
- Dr. James Darrell Skaggs
- Terri Ann and Steve Thornton
- Wal-Mart Foundation

**New Society of 1906 Legacy Circle Members**

- (Recognizes donors who have included a commitment of \$100,000 or more to Western in their estate plans)*
- Brian Collins
- Dr. James Darrell Skaggs
- Avo and James W. Taylor



Summer 2002

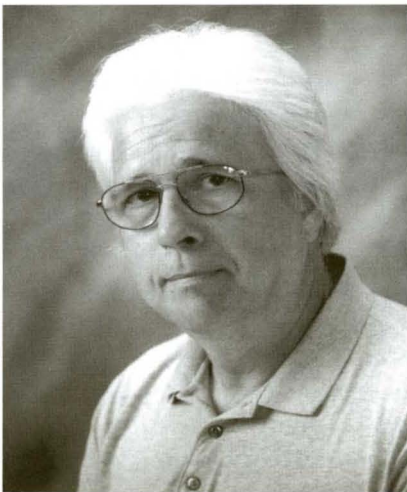
# *Investing in the Spirit*

THE CAMPAIGN FOR WESTERN KENTUCKY UNIVERSITY

Additional information can be obtained by contacting:  
Thomas S. Hiles, Vice President  
for Institutional Advancement  
Western Kentucky University  
1 Big Red Way  
Bowling Green, KY 42101-3576  
270-745-6208  
1-888-WKU-ALUM  
tom.hiles@wku.edu  
www.wku.edu

Non-Profit  
Organization  
U.S. Postage  
**PAID**  
Bowling Green, KY 42101  
Permit No. 398

## Volunteer Spotlight on Bud Layne



**Bud Layne**

**Home:**  
Bowling Green, Kentucky

**Profession:**  
CEO, Span Tech LLC  
Glasgow, Kentucky

**Family:**  
Wife - Jana Whitt Layne '83  
Children - Adam, 16, and Tara, 14

**WKU Volunteer Positions and Support:**  
*Investing in the Spirit* Campaign Cabinet – member  
WKU Foundation Board of Trustees – member  
Innovation and Commercialization Center Board – member  
Established *James L. "Bud" Layne Professorship in Mechanical Engineering*

**Other Community Volunteer Positions:**  
Methodist Church Board – member

**Why I am involved with WKU:**  
"I love Western and want to make the Engineering program grow. I also want to see business developing here that was started here."

**Most rewarding experience with WKU:**  
Working to make the new Engineering facility a reality