

1987

Industrial Resources - Gallatin County - Warsaw

Kentucky Library Research Collections
Western Kentucky University, spcol@wku.edu

Follow this and additional works at: https://digitalcommons.wku.edu/gallatin_cty

 Part of the [Business Administration, Management, and Operations Commons](#), [Growth and Development Commons](#), and the [Infrastructure Commons](#)

Recommended Citation

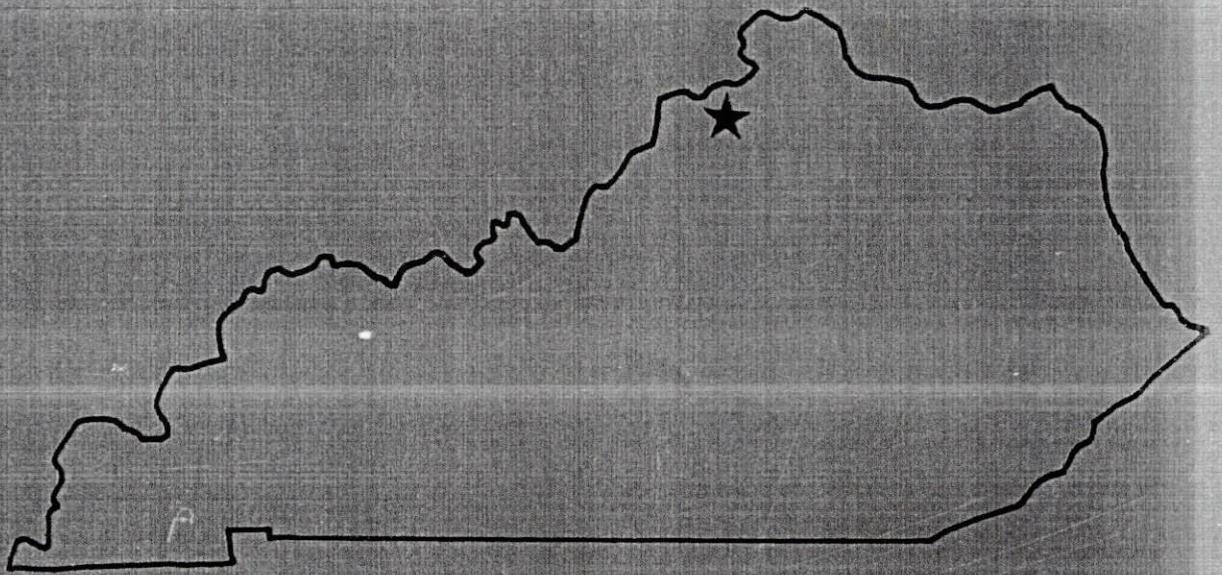
Kentucky Library Research Collections, "Industrial Resources - Gallatin County - Warsaw" (1987). *Gallatin County*. Paper 13.
https://digitalcommons.wku.edu/gallatin_cty/13

This Report is brought to you for free and open access by TopSCHOLAR®. It has been accepted for inclusion in Gallatin County by an authorized administrator of TopSCHOLAR®. For more information, please contact topscholar@wku.edu.

IR
506 Gallatin County

RESOURCES FOR ECONOMIC DEVELOPMENT

Warsaw

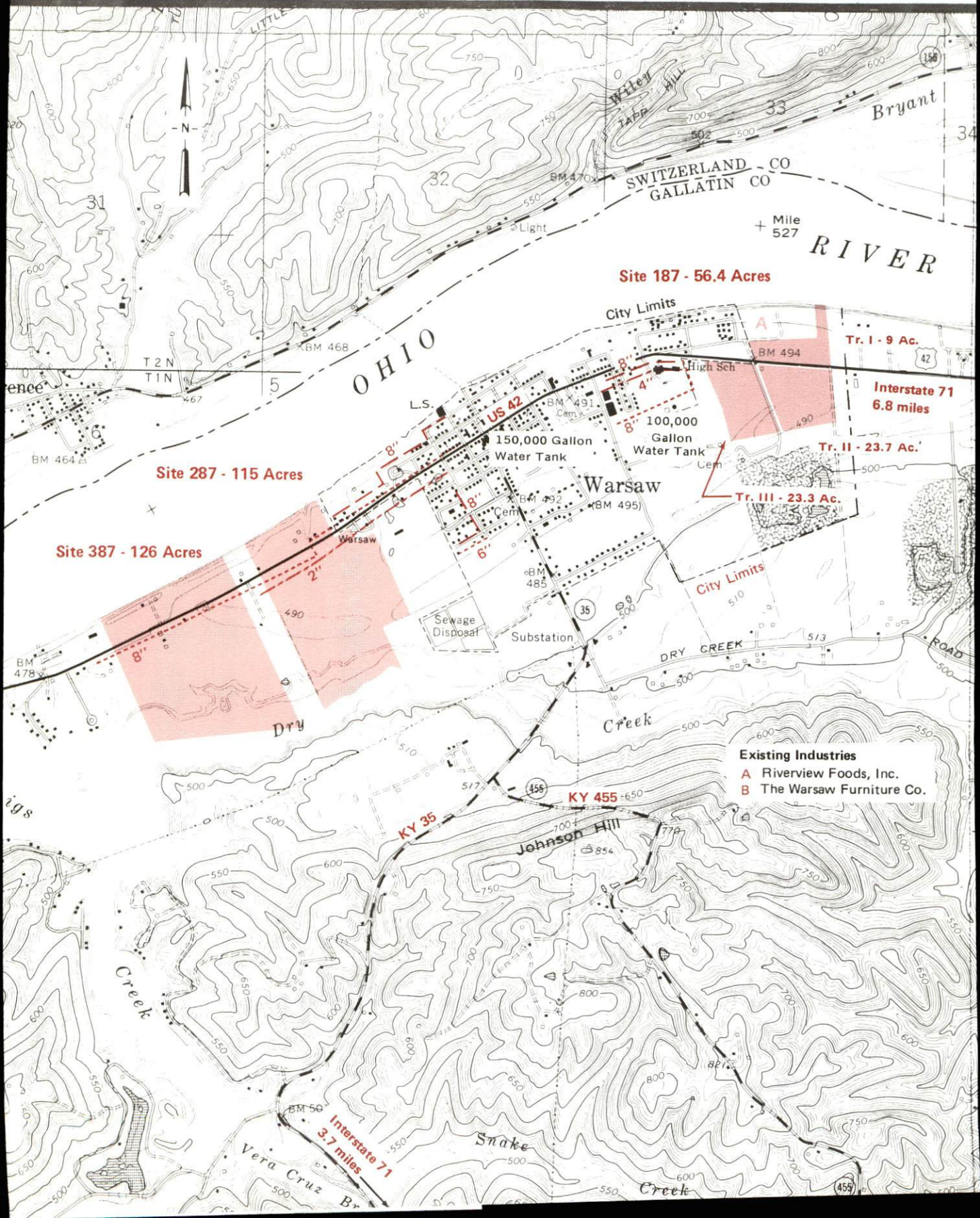


KENTUCKY
The business environment is right.

For more information contact the Kentucky Department of Economic Development, Industrial Development & Marketing Division, Capital Plaza Tower, Frankfort, Kentucky 40601 (502-564-7140).

WARSAW, KENTUCKY

Industrial Sites -- 1987



Site 187 - 56.4 Acres

Site 287 - 115 Acres

Site 387 - 126 Acres

Tr. I - 9 Ac.

Interstate 71
6.8 miles

Tr. II - 23.7 Ac.

Tr. III - 23.3 Ac.

Existing Industries
A Riverview Foods, Inc.
B The Warsaw Furniture Co.

Site 187 - 56.4 Acres

LOCATION: Within northeastern city limits
ZONING: Tract I: I-2; Tract II: I-2; Tract III: I-1
HIGHWAY ACCESS: US 42 passes through site
RAILROAD: Not rail served
WATER: Warsaw Water Works and Sewer System
Size Line: 8-inch line approximately 250 feet west of Tract III
SEWERAGE: Warsaw Water Works and Sewer System
Size Line: 8-inch line approximately 200 feet west of Tract III along south side of US 42
NATURAL GAS: Union Light, Heat and Power Company
Size Line: 4-inch line approximately 200 feet west of Tract III along south side of US 42
ELECTRICITY: Kentucky Utilities Company
OWNERSHIP: Private
SCHOOL DISTRICT: Gallatin County

Site 287 - 115 Acres

LOCATION: Adjacent to northwestern city limits
ZONING: Not zoned
HIGHWAY ACCESS: US 42 passes through site
RAILROAD: Not rail served
WATER: Warsaw Water Works and Sewer System
Size Line: 8-inch line along US 42
SEWERAGE: Warsaw Water Works and Sewer System
Size Line: 8-inch line within 100 feet of eastern boundary north of US 42
NATURAL GAS: Union Light, Heat and Power Company
Size Line: 2-inch line passes through site along south side of US 42
ELECTRICITY: Kentucky Utilities Company
OWNERSHIP: Private
SCHOOL DISTRICT: Gallatin County

Site 387 - 126 Acres

LOCATION: Approximately 1800 feet west of city limits
ZONING: Not zoned
HIGHWAY ACCESS: US 42 passes through site
RAILROAD: Not rail served
WATER: Warsaw Water Works and Sewer System
Size Line: 8-inch line along south side of US 42
SEWERAGE: Warsaw Water Works and Sewer System
Size Line: 8-inch line approximately 1800 feet east
NATURAL GAS: Union Light, Heat and Power Company
Size Line: 2-inch line adjacent to eastern boundary on south side of US 42
ELECTRICITY: Owen County RECC
OWNERSHIP: Private
SCHOOL DISTRICT: Gallatin County

SCALE: 1 inch = 2000 feet
CONTOUR INTERVAL: 10 feet
BASE: USGS 7.5 minute series - 1966
Photorevised - 1981

UTILITIES
- - - - - Water Line
- - - - - Sewer Line
- - - - - Gas Line

Intermediate Regional Flood-Modified
Elevation 474 feet at Ohio River Mile 527
and 473 feet at Ohio River Mile 529



RESOURCES FOR ECONOMIC DEVELOPMENT

WARSAW, KENTUCKY

Prepared by
The Kentucky Department of Economic Development
Division of Research and Planning
in cooperation with
The City of Warsaw

1987

Program manager - Andrew Dennis; research - Jerry Tolliver; clerical - Bobbi Graves; graphics - Tony Cecconi, Robert Owens, Pat Coleman; cartography - Site Evaluation Branch, Division of Industrial Development and Marketing. Cost of printing paid from state funds.

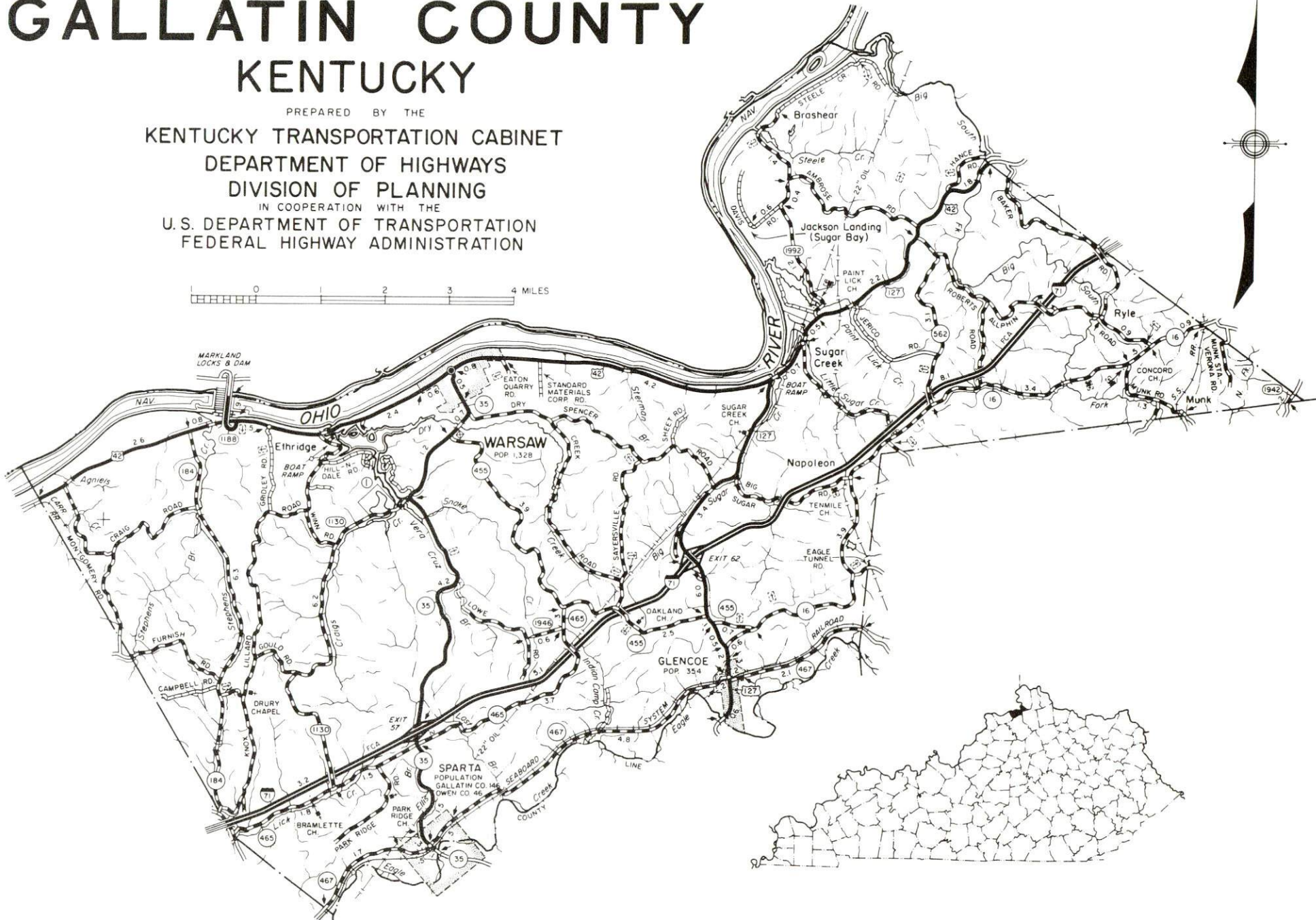
TABLE OF CONTENTS

<u>Chapter</u>	<u>Page</u>
INDUSTRIAL SITES	i
WARSAW, KENTUCKY - A RESOURCE PROFILE	1
THE LABOR MARKET AREA	2
Population	2
Population Projections	2
Labor Force Characteristics of Residents, 1986	3
Selected Components of Nonagricultural Employment, by Place of Work, 1985	3
Per Capita Personal Income	4
Estimated Male Labor Supply	5
Estimated Female Labor Supply	5
Average Weekly Wages by Industry, by Place of Work, 1985	6
EXISTING INDUSTRY	8
Gallatin County Manufacturing Firms, Their Products and Employment	8
Labor Organizations in Manufacturing Firms	8
Selected Industrial Services	9
TRANSPORTATION	10
Rail	10
Highways	10
Truck Service	10
Air	12
Water	12
POWER AND FUEL	13
Electricity	13
Natural Gas	13
Other Fuels	14
WATER AND SEWERAGE	15
Public Water Supply	15
Raw Water	15
Sewerage	16
CLIMATE	17

<u>Chapter</u>	<u>Page</u>
LOCAL GOVERNMENT	18
Structure	18
Planning and Zoning	18
Local Fees and Licenses	18
State and Local Property Taxes	19
Combined State and Local Rates Per \$100 Valuation, 1986	19
Safety	20
Police	20
Fire	20
Rescue Service	20
Refuse Collection and Disposal	20
EDUCATION	21
Public Schools	21
Nonpublic Schools	21
Area Colleges and Universities	21
Vocational Schools	23
HEALTH	25
Local Medical Personnel	25
Hospitals	25
Other Medical Facilities	25
Ambulance Service	25
OTHER LOCAL FACILITIES	26
Communications	26
Library Services	26
Religious Institutions	26
Financial Institutions	26
Hotels and Motels	26
RECREATION	27
COMMUNITY IMPROVEMENTS	29

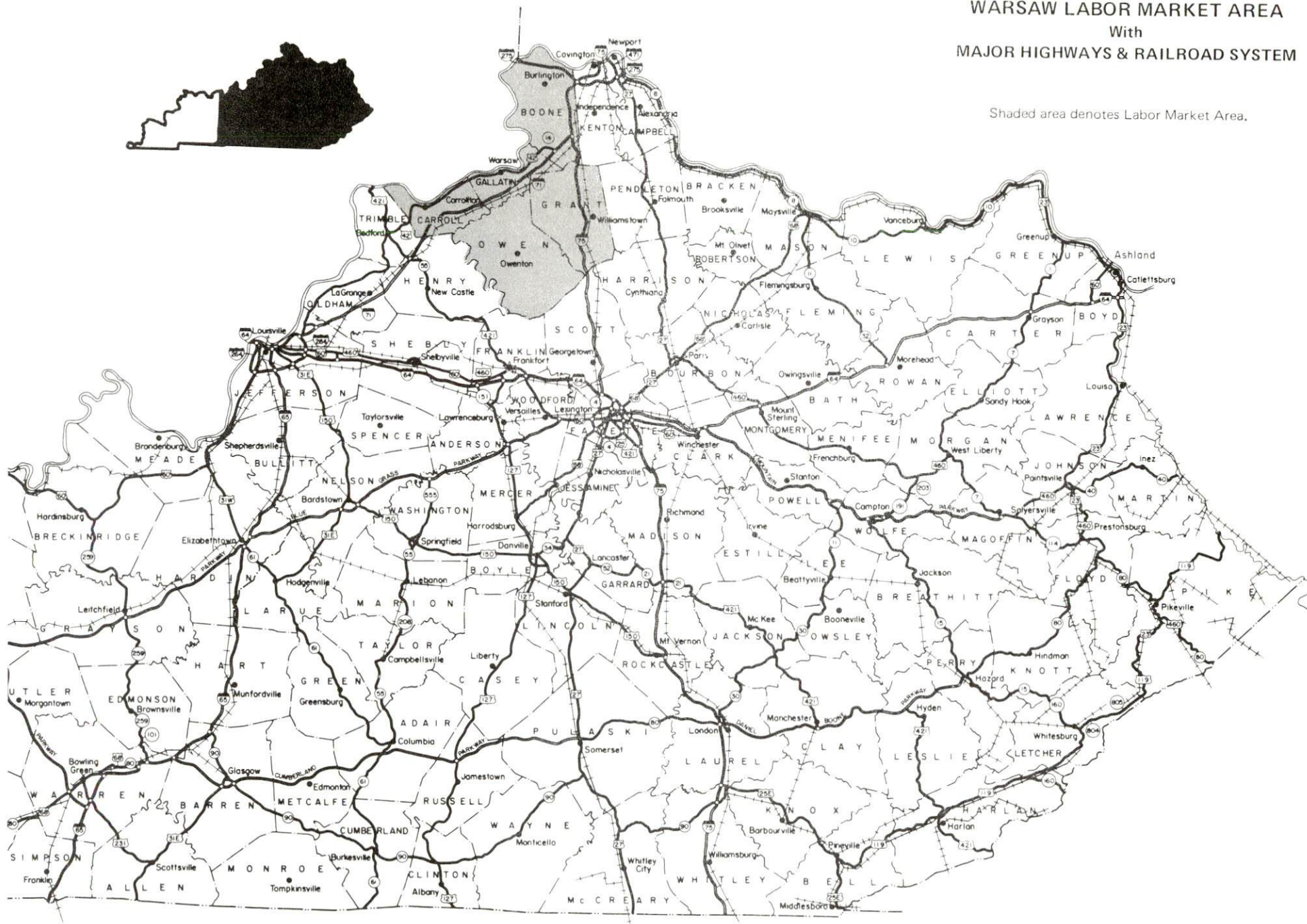
1986 EDITION
GENERAL HIGHWAY MAP
GALLATIN COUNTY
KENTUCKY

PREPARED BY THE
KENTUCKY TRANSPORTATION CABINET
DEPARTMENT OF HIGHWAYS
DIVISION OF PLANNING
IN COOPERATION WITH THE
U.S. DEPARTMENT OF TRANSPORTATION
FEDERAL HIGHWAY ADMINISTRATION



WARSAW LABOR MARKET AREA
With
MAJOR HIGHWAYS & RAILROAD SYSTEM

Shaded area denotes Labor Market Area.



WARSAW, KENTUCKY - A RESOURCE PROFILE

Warsaw, the county seat of Gallatin County, is situated on the south bank of the Ohio River in the north central portion of Kentucky. Warsaw is located 37 miles southwest of Cincinnati, Ohio; 63 miles northeast of Louisville, Kentucky; and 86 miles northwest of Lexington, Kentucky. The city had a 1984 estimated population of 1,388.

Gallatin County, covering a land area of 99 square miles, had a 1985 estimated population of 4,886.

The Economic Framework - The total number of Gallatin County residents employed in 1986 averaged 1,671. In 1985, manufacturing firms in the county reported 44 employees; wholesale and retail trade provided 221 jobs; 31 people were employed in service occupations; state and local government accounted for 168 employees; and contract construction firms provided 13 jobs.

Labor Supply - There is a current estimated labor supply of 3,740 men and 5,323 women available for industrial jobs in the labor market area. In addition, from 1987 through 1991, 3,867 young men and 3,572 young women in the area will become 18 years of age and potentially available for industrial jobs.

Transportation - CSX Transportation provides main line rail service to Sparta, approximately 8 miles south of Warsaw. Warsaw is served directly by U.S. 42, a "AAA"-rated trucking highway. In addition, Interstate 71 is located 4 miles south providing easy access to Louisville, Kentucky, and Cincinnati, Ohio. Access to Interstate 75 is only 15 miles northeast of Warsaw via Interstate 71. Nine trucking companies provide interstate and/or intrastate service to Warsaw. Scheduled commercial airline service is available at the Greater Cincinnati International Airport, 35 miles northeast of Warsaw. Warsaw is located on the Ohio River, where a nine-foot navigation channel is maintained. Private and public port facilities are available in the Cincinnati area, 37 miles northeast of Warsaw.

Power and Fuel - Electric power is provided to Warsaw and parts of Gallatin County by the Kentucky Utilities Company. The remainder of Gallatin County is served by the Owen County Rural Electric Cooperative Corporation. Natural gas is provided by the Union Light, Heat and Power Company. There are two propane dealers and four fuel oil dealers that serve Warsaw.

Education - Primary and secondary education is provided to Warsaw and Gallatin County by the Gallatin County School System. Six universities, seven senior colleges, two junior colleges, and one community college are located within 70 miles of Warsaw. Vocational training is available at the Northern Kentucky State Vocational-Technical School in Covington, 36 miles northeast; the Northern Campbell County Vocational-Technical School in Highland Heights, 38 miles northeast; the Northern Kentucky Health Occupations Center in Edgewood, 33 miles northeast; and the Carroll County Area Vocational Education Center in Carrollton, 17 miles southwest of Warsaw.

LABOR MARKET STATISTICS

The Warsaw Labor Market area includes Gallatin County and the adjoining Kentucky counties of Boone, Carroll, Grant and Owen. Although not included in the statistics below, the Warsaw Labor Market Area also encompasses Switzerland County, Indiana, located across the Ohio River from Gallatin County.

POPULATION

Area	1985*	1980	1970	Percent Nonwhite
				1980
Warsaw	1,388	1,328	1,232	6.0
Labor Market Area	89,285	82,186	62,938	-
Gallatin County	4,886	4,842	4,134	2.7
Boone County	51,247	45,842	32,812	1.0
Carroll County	9,663	9,270	8,523	2.0
Grant County	14,091	13,308	9,999	0.4
Owen County	9,398	8,924	7,470	2.5

* Population estimates. City estimates are for 1984.

Note: The 1980 city counts of population by race are provisional.

Sources: U.S. Department of Commerce, Bureau of the Census, 1980 Census of Population and Housing, March 1981; 1980 Census of Population, Number of Inhabitants. University of Louisville, Urban Studies Center, Population Unit, October 1985; Kentucky Population Research Notes, Issue Number One, May 1985.

POPULATION PROJECTIONS

Area	1990	1995	2000	2010
Labor Market Area*	98,879	107,366	114,372	126,167
Gallatin County	5,400	5,747	6,014	6,422
Boone County	58,058	64,317	69,556	78,552
Carroll County	10,305	10,742	11,042	11,511
Grant County	15,539	16,628	17,520	18,957
Owen County	9,577	9,932	10,240	10,725

* Gallatin County and the four adjoining Kentucky counties.

Source: University of Louisville, Urban Studies Center, Population Research Unit, How Many Kentuckians: Population Forecasts, 1980-2020, the 1986 Edition, Spring 1986.

LABOR FORCE CHARACTERISTICS OF RESIDENTS, 1986

	<u>Gallatin County</u>	<u>Labor Market Area*</u>
Civilian Labor Force	1,842	44,757
Employment	1,671	41,984
Unemployment	171	2,773
Rate of Unemployment (%)	9.3	6.2

* Gallatin County and the four adjoining Kentucky counties.

Source: Kentucky Cabinet for Human Resources, Kentucky Labor Force Estimates, Annual Averages, 1985.

SELECTED COMPONENTS OF NONAGRICULTURAL EMPLOYMENT
BY PLACE OF WORK, 1985

	<u>Gallatin County</u>	<u>Labor Market Area*</u>
All Industries (total)	551	31,222
Manufacturing	44	8,511
Wholesale & Retail Trade	221	9,168
Services	31	4,734
State/Local Government	168	3,541
Contract Construction	13	858
Mining & Quarrying	0	46

* Gallatin County and the four adjoining Kentucky Counties.

Note: Excludes domestic workers, railway workers, certain nonprofit corporations, majority of federal government workers, and self-employed workers.

Source: Kentucky Cabinet for Human Resources, Average Monthly Workers Covered by Kentucky Unemployment Insurance Law, 1985.

PER CAPITA PERSONAL INCOME

<u>Area</u>	<u>1980</u>	<u>1984</u>	<u>Percent Change</u>
Gallatin County	\$ 6,193	\$ 8,446	36.4
Labor Market Area Range*	\$5,711 - 8,983	\$7,926 - 11,568	-
Kentucky	7,644	10,232	33.9
U.S.	9,494	12,772	34.5

* Gallatin County and the four adjoining Kentucky counties.

Sources: U.S. Department of Commerce, Bureau of Economic Analysis. Kentucky Economic Information System, June 1986.

ESTIMATED MALE LABOR SUPPLY
WARSAW LABOR MARKET AREA

Area	Current				Future
	Total Male	Unemployed	Under-employed	Not in Labor Force	Becoming 18 years of age 1987 thru 1991
Labor Market					
Area*	3,740	1,491	1,702	547	3,867
Gallatin	525	113	122	290	225
Boone	1,567	785	782	0	2,276
Carroll	422	111	311	0	366
Grant	619	329	290	0	634
Owen	607	153	197	257	366

ESTIMATED FEMALE LABOR SUPPLY
WARSAW LABOR MARKET AREA

Area	Current				Future
	Total Female	Unemployed	Under-employed	Not in Labor Force	Becoming 18 years of age 1987 thru 1991
Labor Market					
Area*	5,323	1,282	2,234	1,807	3,572
Gallatin	574	58	103	413	179
Boone	2,232	806	1,426	0	2,105
Carroll	699	96	191	412	349
Grant	1,123	246	350	527	585
Owen	695	76	164	455	354

* Additional workers may be drawn from other nearby counties.

Note: Unemployed - persons unemployed and actively seeking work; Underemployed - persons employed but working only 14 to 26 weeks per year; Not in Labor Force - represents the number of persons who would enter the labor force if suitable employment were available (based on the assumption that persons in Kentucky would like to participate in the labor force in the same proportion that they do nationally).

Sources: Kentucky Cabinet for Human Resources, Kentucky Labor Supply Estimates by County, 1986. Kentucky Department of Economic Development, Future Labor Supply Becoming 18 Years of Age, 1987 thru 1991.

AVERAGE WEEKLY WAGES BY INDUSTRY
BY PLACE OF WORK, 1985

	<u>Gallatin County</u>	<u>Boone County</u>	<u>Carroll County</u>
All Industries	\$221.17	\$301.54	\$327.57
Mining & Quarrying	*	441.40	0
Contract Construction	454.15	297.98	258.25
Manufacturing	177.19	430.68	409.54
Transportation, Communications & Public Utilities	195.86	419.07	*
Wholesale & Retail Trade	205.52	205.53	200.83
Finance, Insurance & Real Estate	211.45	313.19	272.83
Services	231.81	211.82	147.93
State/Local Government	235.48	286.07	252.01
Other	*	257.23	*

	<u>Grant County</u>	<u>Owen County</u>
All Industries	\$238.95	\$248.37
Mining & Quarrying	0	0
Contract Construction	211.93	255.29
Manufacturing	278.19	282.40
Transportation, Communications & Public Utilities	404.20	*
Wholesale & Retail Trade	166.18	182.70
Finance, Insurance & Real Estate	257.80	238.21
Services	192.43	142.01
State/Local Government	278.32	245.71
Other	158.67	*

* Not disclosed.

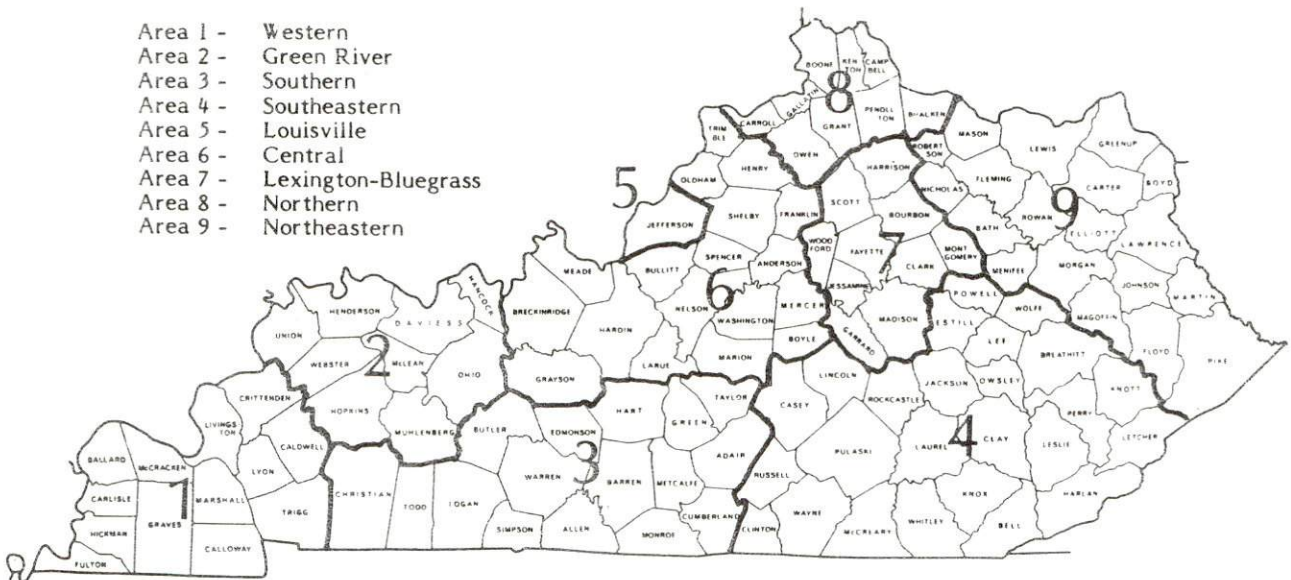
Note: The average weekly wage for each category includes the salaries and wages of all persons working for that type business. For example, the manufacturing category includes both production workers and administrative personnel. Excludes domestic workers, railway workers, certain nonprofit corporations, majority of federal government workers, and self-employed workers.

Source: Kentucky Cabinet for Human Resources, Average Weekly Wages of Workers Covered by Kentucky Unemployment Insurance Law, 1985.

Occupational wage rates for specific industries are usually not available to most government agencies, and wage data furnished to state employment agencies by individual industrial employers are protected from disclosure by federal law. The most reliable up-to-date wage information can be obtained by direct contact with local employers.

Associated Industries of Kentucky, a voluntary organization of Kentucky businesses, regularly collects occupational wage rates and fringe benefits data from participating member firms. Data are compiled for over 127 clearly defined office, production, and service occupations. Tabulations are published for nine geographical areas of Kentucky, as shown on the map below. It should be noted that the data may be weighted by the preponderance of firms in the larger cities and may be somewhat higher than the rates paid in the smaller communities. Data from these tabulations are available, upon request, from the Kentucky Department of Economic Development, Frankfort, Kentucky 40601.

- Area 1 - Western
- Area 2 - Green River
- Area 3 - Southern
- Area 4 - Southeastern
- Area 5 - Louisville
- Area 6 - Central
- Area 7 - Lexington-Bluegrass
- Area 8 - Northern
- Area 9 - Northeastern



Associated Industries of Kentucky Area Wage Surveys

EXISTING INDUSTRY

GALLATIN COUNTY MANUFACTURING FIRMS, THEIR PRODUCTS AND EMPLOYMENT

Firm (Establishment date)	Product	Average Employment		
		Total	Male	Female
Trenwa, Inc. (1976)	Precast concrete products	10	9	1
Southern States Gallatin County Service (1951)	Prepared animal feed	6	4	2
Gallatin Wood Products (1985)	Pallets & skids	10	8	2
Riverview Foods Inc. (1983)	Barbecue pork & beef, barbecue sauce	26	10	16
Sparta Lumber and Pallet Company (1987)	Wood pallets & skids	6	-	-
The Warsaw Furniture Company (1902)	Wood household furniture	40	9	31

* See Labor Organizations below.

Sources: Kentucky Department of Economic Development, 1987 Kentucky Directory of Manufacturers; Division of Research and Planning.

LABOR ORGANIZATIONS IN MANUFACTURING FIRMS

There are no labor unions representing manufacturing workers in Warsaw at the present time.

SELECTED INDUSTRIAL SERVICES

<u>Types of Service</u>	<u>Location</u>	<u>Mileage from Warsaw</u>
Custom Plastics Producers	Florence, Kentucky	26
Electric Motor Repair	Cincinnati, Ohio	37
Grinding, Precision & Tool	Madison, Indiana	36
	Erlanger, Kentucky	37
Heat Treating Facilities	Cincinnati, Ohio	37
Industrial Equipment & Supplies	Florence, Kentucky	26
	Madison, Indiana	32
Industrial Gases	Cincinnati, Ohio	37
Industrial Waste Removal	Cincinnati, Ohio	37
	Bellvue, Kentucky	38
Machine Shops, Tool & Die	Erlanger, Kentucky	30
Metal Finishers	Covington, Kentucky	36
	Newport, Kentucky	37
	Cincinnati, Ohio	37
Metal Service Centers	Covington, Kentucky	36
	Cincinnati, Ohio	37
Millwrights	Erlanger, Kentucky	30
	Villa Hills, Kentucky	31
	Cincinnati, Ohio	37
Public Warehouse Facilities	Florence, Kentucky	26

Sources: Kentucky Department of Economic Development, Kentucky Directory of Selected Industrial Services, 1985; Division of Research and Planning.

TRANSPORTATION

Rail

Warsaw is not served directly by rail. The nearest rail service is provided by CSX Transportation at Sparta, approximately 8 miles south of Warsaw.

Services at Sparta - Main line; stops are made as needed by northbound freights; 3 northbound and 3 southbound through freights daily; team track space for 8 cars. Piggyback facilities are maintained by CSX Transportation and the Norfolk Southern Railroad at Cincinnati, Ohio, 37 miles northeast of Warsaw.

For details on routing, schedules, rates, and services contact:

Corporate Communications
CSX Transportation
908 West Broadway
Louisville, Kentucky 40203
(502) 587-5445

Highways

Warsaw is located 4 miles from Interstate 71, which extends northeast from Louisville, through Gallatin County, and connects with north-south Interstate 75 in adjoining Boone County. Interstate 71 also connects with Interstates 64 and 65 at Louisville, 63 miles southwest of Warsaw.

Warsaw is also served by U.S. 42 and Kentucky 35, both "AAA"-rated (80,000-pound gross load limit) trucking highways. Direct access to Indiana Highway 156 is provided by a bridge constructed atop the Markland Dam, 4 miles west of Warsaw.

Truck Service

ARA/Smith's*
Central Transport, Inc.*
Craigs Express, Inc.*
Jones Transfer Company**
Manning Motor Express, Inc.*

Overnite Transportation
Company*
Owenton Express, Inc.*
R-W Service System, Inc.*
Roadway Express, Inc.*

* Interstate and intrastate service.

** Interstate service only.

Source: American Motor Carrier Directory, Spring 1987.

HIGHWAY MILES AND TRUCK TRANSIT TIME IN DAYS FROM
WARSAW, KENTUCKY, TO SELECTED MARKET CENTERS

City	Highway Miles	Delivery Time TL	City	Highway Miles	Delivery Time TL
Atlanta, GA	442	2	Los Angeles, CA	2,171	5
Baltimore MD	534	2	Louisville, KY	63	1
Birmingham, AL	427	2	Nashville, TN	231	1
Chicago, IL	333	1	New Orleans, LA	748	3
Cincinnati, OH	37	1	New York, NY	684	-
Cleveland, OH	281	1	Pittsburgh, PA	324	2
Detroit, MI	296	1	St. Louis, MO	346	1
Knoxville, TN	255	1			

Note: Mileage computations are via the best interstate or primary highways, not necessarily the most direct route of travel.

Sources: Rand McNally Road Atlas, 1979. Official Kentucky Mileage Map, 1980.
Delivery time - Overnite Transportation Company, P. O. Box 99308, Louisville,
Kentucky 40299.

Air

Nearest Scheduled Commercial Airline Service

Location: Greater Cincinnati International Airport
8 miles southwest of Covington, Kentucky;
35 miles northeast of Warsaw

Runways: 3 paved

Length: 9,500 feet; 7,800 feet; 5,500 feet

Traffic Control: Local and ground flight data, clearance
delivery, arrival and departure data, arrival
and departure radar, satellite control

Lighting: Beacon, VASI, MALS-RAIL, ALS-SFL, HIRL, CL, TDZ

Services: American, Continental, Delta, Pan Am, Piedmont,
Northwest; fuel - 100LL, jet-A; hangars,
tie-downs; major A & P repairs, major Avionics
repairs; APU, charter, flight instruction,
oxygen, plane rental, U.S. Customs; weather
information; taxi, limousine, car rentals,
courtesy car; restaurant, snack bar; hotel;
business service centers

Air Freight Services: Air freight terminal

Water

Warsaw is located on the Ohio River, one of the most heavily traveled inland waterways in the United States. A 9-foot navigation channel is maintained along the entire length of the Ohio River. Warsaw is 37 miles southwest of the Cincinnati-Northern Kentucky area where extensive port facilities are available, as well as a Foreign Trade Zone and U.S. Customs services for exports and imports.

Louisville, 63 miles from Warsaw, also offers extensive private and public port facilities, a Foreign Trade Zone, and U.S. Customs services.

POWER AND FUEL

Electricity

Company serving Warsaw and parts of Gallatin County - Kentucky
Utilities Company
Source of power - Kentucky Utilities Company
For industrial rates contact:

Industrial Development Department
Kentucky Utilities Company
One Quality Street
Lexington, Kentucky 40507
(606) 255-1461

Company serving most of Gallatin County - Owen County Rural Electric
Cooperative Corporation
Source of power - East Kentucky Power Cooperative
For industrial rates contact:

Industrial Development Division
East Kentucky Power Cooperative
P. O. Box 707
Winchester, Kentucky 40391
(606) 744-4812

and/or

Owen County Rural Electric Cooperative
Corporation
510 Georgetown Road
Owenton, Kentucky 40359
(502) 484-3471

Natural Gas

Company serving Warsaw - Union Light, Heat and Power Company
Source of supply - Columbia Gas Transmission Corporation
Size of transmission mains - 24-inch (supplier); 4 and 6 inches
(distributor)
Distribution mains - 2 and 4 inches
Distribution pressure - Up to 30 psi
Btu content - 1,025 per cubic foot
Specific gravity - 0.60
For rates and supplies contact:

Union Light, Heat and Power Company
(a subsidiary of the Cincinnati Gas
and Electric Company)
P. O. Box 960
Cincinnati, Ohio 45201
(513) 632-2595

Other Fuels

Propane

Baker Doxol Gas
106 Park Avenue
Warsaw, Kentucky 41095

Silgas
Howard Street
Glencoe, Kentucky 40146

Fuel oils

Distillate fuel oil -

Ashland Petroleum Company
305 East Main
Warsaw, Kentucky 41095

Brinkman Oil Company
Dixie Highway
Walton, Kentucky 41094

Baker Petroleum, Inc.
206 East Main Street
Warsaw, Kentucky 41095

Bobby Harper Distributors, Inc.
601 Park Avenue
Carrollton, Kentucky 41008

Residual fuel oil - Arrangements must be made with the refinery.

Low sulphur content coal - Available in Kentucky.

WATER AND SEWERAGE

Public Water Supply

Company serving Warsaw - Warsaw Water and Sewer Systems
P. O. Box 785
Warsaw, Kentucky 41095-0785
(606) 567-5931

Source - 2 artesian wells
Treatment plant capacity - 300,000 gallons per day
Average daily consumption - 126,347 gallons
Peak daily consumption - 180,000 gallons
Treatment processes - Chlorination
Storage capacity - 250,000 gallons
Size lines - 12, 8, 6, 4 and 2 inches
Water pressure - 45-50 psi

MONTHLY WATER RATES

First	2,000 gallons or less	\$5.00 (Minimum bill)
Next	8,000 gallons	1.90 per M gallons
Next	10,000 gallons	1.64 per M gallons
Over	20,000 gallons	1.60 per M gallons

Master Meter Rate (Master meter users are two or more residents or businesses operating on one meter) -
Minimum rate of \$5.00 for every 2,000 gallons used

Tap-on charge: \$500

Raw Water

Surface water sources - Ohio River
Average discharge - Ohio River at Markland Dam, 120,000 cfs
(15 years, USGS)
Expected ground water yield - 500 to 1,000 gpm along Ohio River;
5 to 50 gpm along Eagle Creek; 5 gpm or less over remainder
of county

Sewerage

Company serving Warsaw - Warsaw Water & Sewer Systems
101 West Market Street
P. O. Box 785
Warsaw, Kentucky 41095-0785
(606) 567-5931

Design capacity - 120,000 gallons per day
Average daily flow - 90,000 gallons
Type of treatment - Primary and secondary
Treatment processes - Lagoon system*
Size of sanitary mains - 6 and 8 inches
Size of storm mains - 8, 10, 12, 16 and 18 inches
Monthly rates - 50% of monthly water bill
Tap-on charge: \$400

* The present lagoons are being upgraded at a cost of \$400,000. Work should be completed by July 1988.

CLIMATE

Gallatin County

Temperature

Normal (30-year record)	53.30 degrees
Average annual 1985	53.60 degrees
Record highest, August 1962 (24-year record)	102.00 degrees
Record lowest, January 1977 (24-year record)	-25.00 degrees
Normal heating degree days (30-year record) (Heating degree day totals are the sums of negative departures of average daily temperatures from 65 degrees F.)	5,247

Precipitation

Normal (30-year record)	40.14 inches
Mean annual snowfall (30-year record)	24.10 inches
Total precipitation 1985	44.13 inches
Mean number days precipitation (.01 inch or more) (38-year record)	129.50
Mean number days thunderstorms (38-year record)	42.90

Prevailing winds (through 1963)

South-Southwest

Relative Humidity (23-year record)

1 a.m.	77 percent
7 a.m.	81 percent
1 p.m.	60 percent
7 p.m.	64 percent

Source: U.S. Department of Commerce, Environmental Science Services Administration, Climatological Data, 1985. Station of record: Cincinnati, Ohio, Greater Cincinnati Airport.

LOCAL GOVERNMENT

Structure

The city of Warsaw is served by a mayor and six council members. The mayor is elected to a four-year term and the council members serve two-year terms. Gallatin County is served by a county judge/executive and four magistrates. The judge/executive and magistrates are elected to four-year terms.

Planning and Zoning

City agency - Warsaw Planning and Zoning Commission
Zoning enforced - City of Warsaw
Subdivision regulations enforced - City of Warsaw and three miles beyond
Local codes enforced - Building and housing within the city of Warsaw
Mandatory state codes enforced - Kentucky Plumbing code, National Electric Code, Kentucky Boiler Regulations and Standards, Kentucky Building Code (modeled after BOCA code)

Local Fees and Licenses

The city of Warsaw levies an annual occupational license fee upon all persons, firms and corporations engaged in a business or occupation in the city of Warsaw. The fees range from \$18.75 to \$250.00 annually.

A 3 percent tax is levied on utilities receipts for schools in Gallatin County. Tax is paid by all consumers of utilities as an add-on to the utilities bills. Exempted are receipts from utilities services that are resold and the receipts from the sale of energy or energy producing fuels that exceed 3 percent of the cost of production in manufacturing, processing, mining or refining.

State and Local Property Taxes

All property in Kentucky, except items exempted by the state constitution, is taxed by the state. Property which also may be taxed by local jurisdictions includes land and buildings, finished goods inventories, automobiles, trucks, office furniture and office equipment. Local taxing jurisdictions in Kentucky include counties, cities, and school districts.

All property in Kentucky is assessed at 100 percent of fair cash value.

COMBINED STATE AND LOCAL RATES PER \$100 VALUATION, 1986

	<u>Warsaw</u>	<u>Unincorporated Gallatin County</u>
Land and Buildings	\$0.966	\$0.722
Manufacturing		
Machinery	0.150	0.150
Pollution Control		
Equipment	0.150	0.150
Inventories		
Raw materials	0.001	0.001
Goods in Process	0.001	0.001
Finished Goods	0.765	0.521
Automobiles & Trucks	1.222	0.977
Other Tangible		
Personal Property	1.214	0.970
Intangibles (Accounts receivable*, money in hand, stock, notes, bonds)	0.250	0.250
Goods Stored in Public Warehouses in Transit Status	0.001	0.001
Private Leaseholds in Industrial Revenue Bond Financed Facilities	0.015	0.015

* Accounts receivable are taxed at 85 percent of face value, for an effective rate of \$0.2125 per \$100 valuation.

Safety

Police	Warsaw	Gallatin County
Total staff	3	3
Radio-patrol cars	1	2
Fire*		
Insurance Services Office, Public Protection Classification	5	10
Volunteers	30	69
Rescue Service		

Warsaw and Gallatin County are provided rescue service by the Gallatin County Metro Ambulance Service.

Refuse Collection and Disposal

Private contractors provide refuse collection to Warsaw and Gallatin County.

* Includes copyrighted material of ISO Commercial Risk Services, Inc., with its permission. The city of Warsaw and Gallatin County maintain a joint fire station providing fire protection to both city and county residents.

EDUCATION

Public Schools

	Gallatin County
Total Enrollment (Spring 1987)	965
Kindergarten	65
Elementary	464
Junior High	148
High School	288
 Pupil-Teacher Ratio (1985-86)	 20.3-1
 Percent High School Graduates to College (1985-86)	 28.8
 Expenditures Per Pupil (1985-86)	 \$2,001.61

Nonpublic Schools

<u>School</u>	<u>Enrollment</u>	<u>Grades</u>
Warsaw Private Elementary School	30	1-7

Area Colleges and Universities

<u>Name</u>	<u>Location (Miles distant)</u>	<u>Enrollment (Fall, 1986)</u>	<u>Highest Degree Conferred</u>
Hanover College	Hanover, Indiana (38)	1,075	Baccalaureate
Thomas More College	Ft. Mitchell, Kentucky (41)	1,120	Baccalaureate
Athenaeum of Ohio	Cincinnati, Ohio (37)	235	Masters
College of Mt. St. Joseph	Cincinnati, Ohio (37)	2,215	Masters

(Continued)

<u>Name</u>	<u>Location (Miles distant)</u>	<u>Enrollment (Fall, 1986)</u>	<u>Highest Degree Conferred</u>
Hebrew Union College	Cincinnati, Ohio (37)	139	Academic & Professional
Southern Ohio College	Cincinnati, Ohio (37)	1,095	Associate
University of Cincinnati	Cincinnati, Ohio (37)	35,322	Academic & Professional
Xavier University	Cincinnati, Ohio (37)	6,265	Masters
Northern Kentucky University	Highland Heights, Kentucky (38)	8,661	Masters, J.D.
Kentucky State University	Frankfort, Kentucky (51)	2,205	Masters
Midway College	Midway, Kentucky (63)	340	Associate
University of Louisville	Louisville, Kentucky (63)	20,217	Doctorate, M.D., D.M.D., J.D.
Bellarmino College	Louisville, Kentucky (63)	2,644	Masters
Spalding University	Louisville, Kentucky (63)	1,154	Doctorate
Jefferson Community College	Louisville, Kentucky (63)	6,996	Associate
Georgetown College	Georgetown, Kentucky (69)	1,362	Masters

Vocational Training

The Bluegrass State Skills Corporation, an independent public corporation created and funded by the Kentucky General Assembly, provides programs of skills training to meet the needs of business and industry from entry level to advanced training, and from upgrading present employees to retraining experienced workers.

The Bluegrass State Skills Corporation is the primary source for skills training assistance for a new or existing company. The Corporation works in partnership with other employment and job training resources and programs, as well as Kentucky's economic development activities, to package a program customized to meet the specific needs of a company.

Vocational training is available at both the state vocational-technical schools and the area vocational education centers. The state vocational-technical schools are post-secondary institutions. The area vocational education centers are designed to supplement the curriculum of high school students. Both the state vocational-technical schools and the area vocational education centers offer evening courses to enable working adults to upgrade current job skills.

Arrangements can be made to provide training in the specific production skills required by an industrial plant. Instruction may be conducted either in the vocational school or in the industrial plant, depending upon the desired arrangement and the availability of special equipment.

Nearest State School

Northern Kentucky State Vocational-Technical School
Covington, 36 miles distant

Business & Office	Drafting (with CAD/CAM)
Clerical	Electronics
Data Processing	Instrumentation
Secretarial	Machine Shop
Consumer & Home Economics	Masonry
Child Care Services	Welding
Commercial Foods	Learning Resource Center
Consumer & Family Life	Public Service Occupations
Skills	Business/Industry Security
Health & Personal Services	Training
Occupations	CPR Training
Cosmetology	Electrical Safety Training
Industrial Education	Emergency Medical Care
Air Conditioning	Fire Service Training
Auto Body Repair	First Aid & Safety
Auto Mechanics	Rescue & Emergency Services
Carpentry	Training

(Continued)

Northern Campbell County Vocational-Technical School
Highland Heights, 38 miles distant

Industrial Education

Auto Mechanics
Commercial Arts
Diesel Mechanics
Graphic Arts
Plumbing

Special Vocational

Developmental Occupation
Programs
Vocational Improvement
Programs

Northern Kentucky Health Occupations Center
Edgewood, 33 miles distant

Health & Personal Services
Occupations
Dental Assisting

Medical Assisting
Medical Secretary
Practical Nursing

Nearest Area Education Center

Carroll County Area Vocational Education Center
Carrollton, 17 miles distant

Business & Office

Accounting I & II
Business Math
Introduction to Computers
Office Machines
Typing I & II
Word Processing

Health & Personal Services
Occupations
Health Careers

Industrial Education

Auto Mechanics
Carpentry
Industrial Electricity
Welding

HEALTH

Local Medical Personnel

Physicians - 1
Dentists - 1
Chiropractors - 1

Hospitals

<u>General Hospital</u>	<u>Location</u>	<u>Beds</u>
Carroll County Memorial Hospital	Carrollton, 17 miles southwest of Warsaw	54
William Booth Memorial Hospital	Florence, 26 miles northeast of Warsaw	161

Carroll County Memorial Hospital

Medical staff - 8 active physicians, 29 courtesy physicians, 21 registered nurses, and 6 licensed practical nurses

William Booth Memorial Hospital

Medical staff - 274 physicians, 160 registered nurses, and 97 licensed practical nurses

Other Medical Facilities

Three Rivers District Health Department
Gallatin County Health Center

Ambulance Service

Name - Gallatin County Metro Ambulance Service
Staff - 20 emergency medical technicians (volunteers)

OTHER LOCAL FACILITIES

Communications

Telephone -	Cincinnati Bell Telephone Company
Telegraph -	Western Union
	Toll-Free number, 1-800-325-6000
 Newspapers -	 Gallatin County News
Weekly and	
circulation -	2,500
 Television -	
Airwave reception	Lexington and Louisville, Kentucky;
from -	Cincinnati, Ohio
 Cable service -	Centel Cable, Inc.
Educational	
Television -	The Kentucky Educational Television
	(K.E.T.) network is available
	statewide

Library Services

Public library - Gallatin County Free Public Library
 Size collection - 180,000 volumes
 Circulation, 1985-86 - 27,871

Religious Institutions

Denominations -	Baptist	Church of Christ
	Catholic	Methodist
	Christian	Pentecostal
 Nearest Synagogues -	Cincinnati, Ohio, 37 miles northeast of Warsaw	
Congregations -	16 synagogues (orthodox, reform, traditional and conservative)	

Financial Institutions

<u>Banks</u>	<u>Assets</u>	<u>Deposits</u>	<u>Statement Date</u>
Farmers State Bank	\$23,818,000	\$21,893,000	12/31/86

Hotels and Motels

Total number - 3
 Total rooms - 15

RECREATION

Local

Warsaw's location on the Ohio River provides for excellent recreational activities. The most popular are boating, water skiing, and fishing. Construction of a city-county park on the riverfront of the Ohio River is under way. A new park on the east side of Warsaw includes a shelter house with restrooms, a ball park, picnic area, volleyball court, area for horseshoes, and shuffleboard. The park also features a basketball court, playground area, jogging trail, bicycle trail and soccer field.

Other recreational facilities close to Warsaw are located in adjoining Boone County. Municipal recreation departments provide supervised recreation programs with playgrounds, swimming pools, tennis courts, baseball diamonds, football fields, basketball courts, and volleyball courts. Private recreational facilities include movie theaters, bowling facilities, country clubs, golf courses and tennis clubs.

Area (Within 65 miles)

General Butler State Resort Park is located 19 miles southwest of Warsaw near Carrollton. The park includes a 30-acre lake, a boat dock, a 9-hole golf course, a miniature golf course, a swimming pool, playgrounds, shuffleboard, tennis courts, planned recreation, fishing, camping, horseback riding, 57 lodge rooms, cottages, and gift shops. General Butler's family home, the Butler Mansion, has been restored and contains a museum of Ohio River lore. Another unique feature is the Ski Butler ski area that has six ski runs, a ski shop, rental equipment, a ski school and chair lifts.

Big Bone Lick State Park in Boone County, 20 miles northeast of Warsaw, provides a unique combination of educational and recreational pleasures. Visitors can walk through the natural outdoor museum with replicas and exhibits that tell the story of Big Bone Lick. Recreational activities and facilities include a modern campground with 62 sites, fishing in a nearby lake, an indoor and outdoor museum and gift shop, picnic grounds, tennis, shuffleboard, volleyball, basketball, horseshoes, planned recreation, and a swimming pool in the camping area.

Madison, Indiana, 32 miles west of Warsaw, is the home of the world-famous Madison Regatta. Highlights of the Gold Cup Week are the world's fastest race boats competing in the Gold Cup and the Indiana Governor's Cup Race. A week of prerace festivities begins with the Miss Madison Regatta beauty pageant and continues with the volunteer fire department's waterball fight, fireworks, a balloon race, a parade and a 6-mile marathon race. The annual event, held the first week in July, is featured on ABC-TV's "Wide World of Sports." Madison is also noted for its many stately homes and historical buildings which have been restored to their original condition by the efforts of Historic Madison, Inc.

Clifty Falls State Park near Madison, Indiana, was established in 1920, and contains 1,309 acres of scenic beauty overlooking the Ohio River. The view over the river is comparable to that of the Swiss Alps.

Cincinnati, Ohio, is 37 miles northeast of Warsaw. Cincinnati provides a wide variety of entertainment, cultural facilities and activities, and sports events - all within a few minutes drive. The Cincinnati Zoo offers entertainment the whole family can enjoy. Kings Island is the largest family entertainment center in the entire Midwest. The Cincinnati Riverfront Stadium is the home of the Cincinnati Reds baseball and Bengals pro football teams. The Riverfront Coliseum offers NCAA basketball action with the University of Cincinnati Bearcats. Cultural interests include the Cincinnati Symphony Orchestra, various art galleries and museums, libraries, and legitimate theaters presenting Broadway plays.

Frankfort, the capital of Kentucky, is 51 miles south of Warsaw. Points of interest in Frankfort include the Capitol Building, a 34-foot floral clock, the Daniel Boone Monument, several museums, and old homes with their original furnishings. Frankfort is also the home of Kentucky State University which offers many cultural activities and sporting events.

Louisville, 63 miles southwest of Warsaw, provides a wide variety of recreational opportunities. The most noted recreational event in Louisville is the Kentucky Derby at Churchill Downs. The "Run for the Roses" is the oldest continuously held horse race in the United States. Other attractions include: Kentucky Center for the Arts, Macauley Theatre, Actors Theatre of Louisville, Louisville Children's Theatre, the Louisville Bach Society, the Louisville Orchestra, the Louisville Ballet, the Kentucky Opera Association, several museums, the Louisville Zoological Gardens, University of Louisville sporting events, rock concerts, and the "Belle of Louisville" sternwheeler.

COMMUNITY IMPROVEMENTS

Recent

Dickens-Riggs, Inc., Gallatin Wood Products, Riverview Foods, Inc., and the Warsaw Furniture Company have recently announced plans to expand their Warsaw facilities. These expansion plans represent an investment of over \$425,000 and 43 additional jobs.

Two new industries have recently located in the Warsaw area: The Sparta Lumber and Pallet Manufacturing Company, which employs six, and the Midwest Salvage Company, a railroad salvage operation, which also employs six.

The Wilson Recycling Company has moved part of its operations to another location in Warsaw which will allow the firm to nearly double its capacity.

Downtown Warsaw has recently been designated as a National Historic District. The historic district, which covers less than a square mile, includes 136 buildings, of which 118 are historic. An advantage of this designation, aside from civic pride, is a 25 percent tax break for commercial properties that are rehabilitated.

The Historic Hawkins-Kirby House, built in 1943 and listed on the Register of Historic Places, has been recently restored by the Gallatin County Historical Society. The \$40,000 restoration project was funded by local funds and a match by the Kentucky Historical Council. This historic house serves as a museum, and a place for community social events.

A \$2.5 million repaving and reconstruction project on U.S. Highway 42 and Kentucky 35 within the city limits of Warsaw has been completed. The project also included new sidewalks, new curbs, and a new drainage system.

The construction of a new park on the east side of Warsaw has been completed. The park includes two shelter houses with restrooms, a ball park, picnic area, volleyball court, area for horseshoes, and shuffleboard. The park also has a basketball court, playground area, jogging trail, bicycle trail and soccer field.

The city recently converted the old Gallatin County Public Library into a Senior Citizens Center at a cost of \$10,000. The center serves as a recreational facility for senior citizens. Meals are also served daily to senior citizens at the center.

A new exhibit and service building at the fairgrounds was recently constructed. Cost of the project was \$25,000.

Under Way

A \$400,000 multi-family housing project is currently under way. The project is a cluster of four, one-story buildings which will include 12 units of one and two-bedroom dwellings. Completion of the project is scheduled for fall of 1987.

The construction of a privately-funded 18-hole golf course is currently under way. Completion of this project is expected in late 1987.

Construction is currently under way on a new city park on the riverfront. The park will have a shelter house with restrooms, picnic area, horseshoe area, storage garage, ball park, playground area and jogging trail.

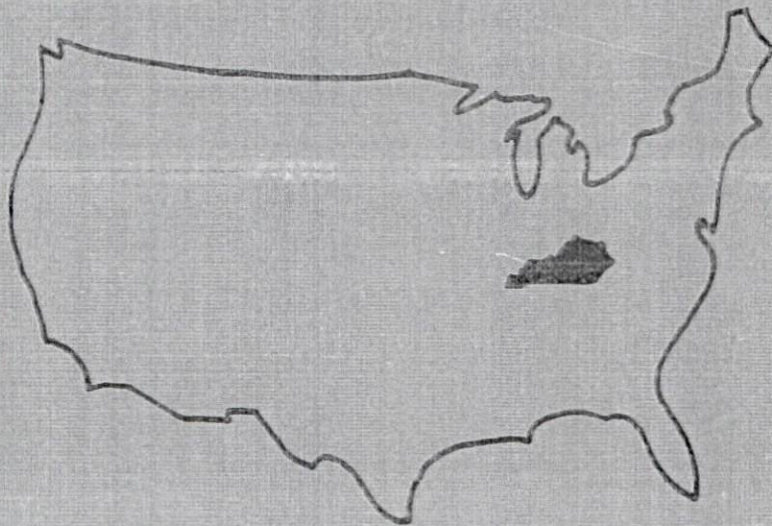
Construction of a mini-mall in the downtown area is under way.

Planned

There are plans for the construction of a new elementary school in Warsaw. Construction of the \$1,141,000 elementary school is scheduled to begin in the spring of 1987 and is to be completed by May 1988.

Plans are also under way to improve the sewerage system by upgrading the present lagoons. Cost of the project is \$400,000 and it is to be completed in July 1988.

There are tentative plans to construct a northern Kentucky regional airport near Warsaw to serve as a reliever airport for the Greater Cincinnati International Airport. Private sector interests plan to construct a resort adjacent to the airport that would include an 18-hole golf course, homes, and a hotel with conference facilities.



**Kentucky Commerce Cabinet
Department of Economic Development
Capital Plaza Tower
Frankfort, Kentucky 40601
(502) 564-7140**