

1967

Industrial Resources: Webster County - Sebree

Kentucky Library Research Collections
Western Kentucky University, spcol@wku.edu

Follow this and additional works at: https://digitalcommons.wku.edu/webster_cty

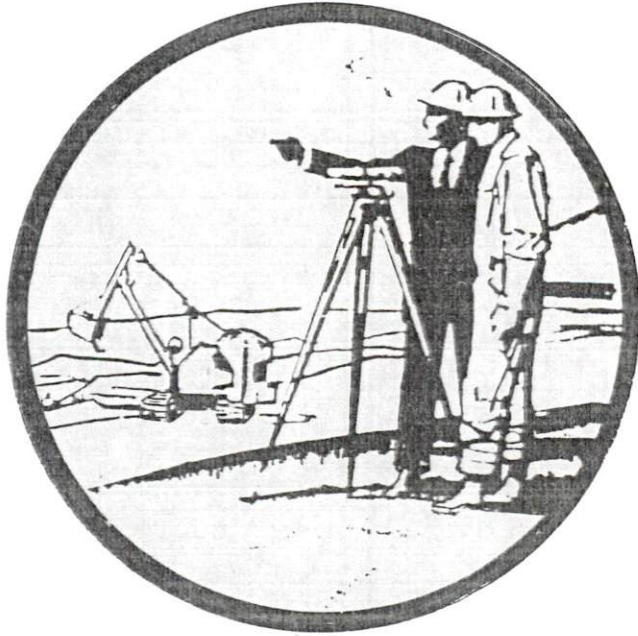
 Part of the [Business Administration, Management, and Operations Commons](#), [Growth and Development Commons](#), and the [Infrastructure Commons](#)

Recommended Citation

Kentucky Library Research Collections, "Industrial Resources: Webster County - Sebree" (1967). *Webster County*. Paper 18.
https://digitalcommons.wku.edu/webster_cty/18

This Report is brought to you for free and open access by TopSCHOLAR®. It has been accepted for inclusion in Webster County by an authorized administrator of TopSCHOLAR®. For more information, please contact topsolar@wku.edu.

Webster

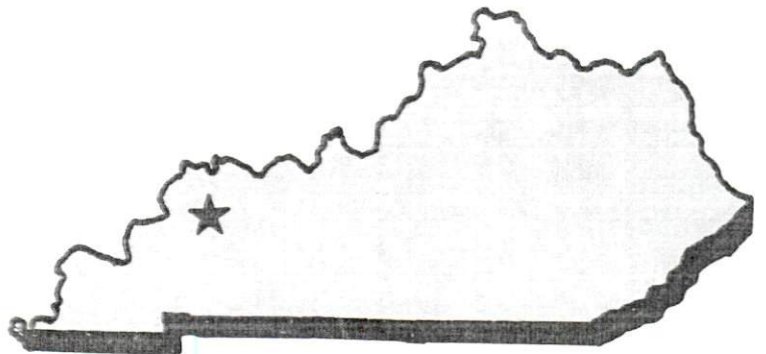


YOUR GUIDE TO A

KENTUCKY INDUSTRIAL SITE

Kentucky Street Map

SEBREE
HAS THE
LOCATION



SEBREE INDUSTRIAL SITE NO. 1
SITE SURVEY INFORMATION

SITE DESCRIPTION:

Total acreage: 199.25 acres

Location: Northeast of Sebree

Distance from city limits: 1 mile

Type neighborhood: Agricultural

Proximity to residential property: 1 mile ; Zoning: None

Ownership: Frank Vittetow, 208 Steele Street, Frankfort,

Kentucky, 40601

Cost: Subject to negotiation ; Terrain: Level to rolling

Elevation: 380-405 feet

Estimated grading cost: Nominal

Transportation:

Roadway access: Kentucky Route 56 and Pennyrile Parkway

Distance from arterial street or highway: Kentucky Route

56 fronts

Railroads serving: Louisville & Nashville Railroad

Location of line: 1 mile west

Waterways: Green River one-half mile east

Distance to commercial airport: Dress Memorial Airport,

Evansville, Indiana, 30 miles

(Continued)

Kentucky Library W 111

SITE NO. 1 SURVEY INFORMATION
PAGE 2

Utilities:

Gas:

Company: Western Kentucky Gas Company

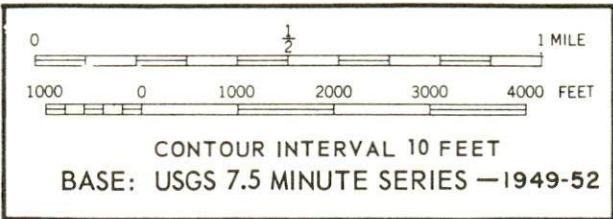
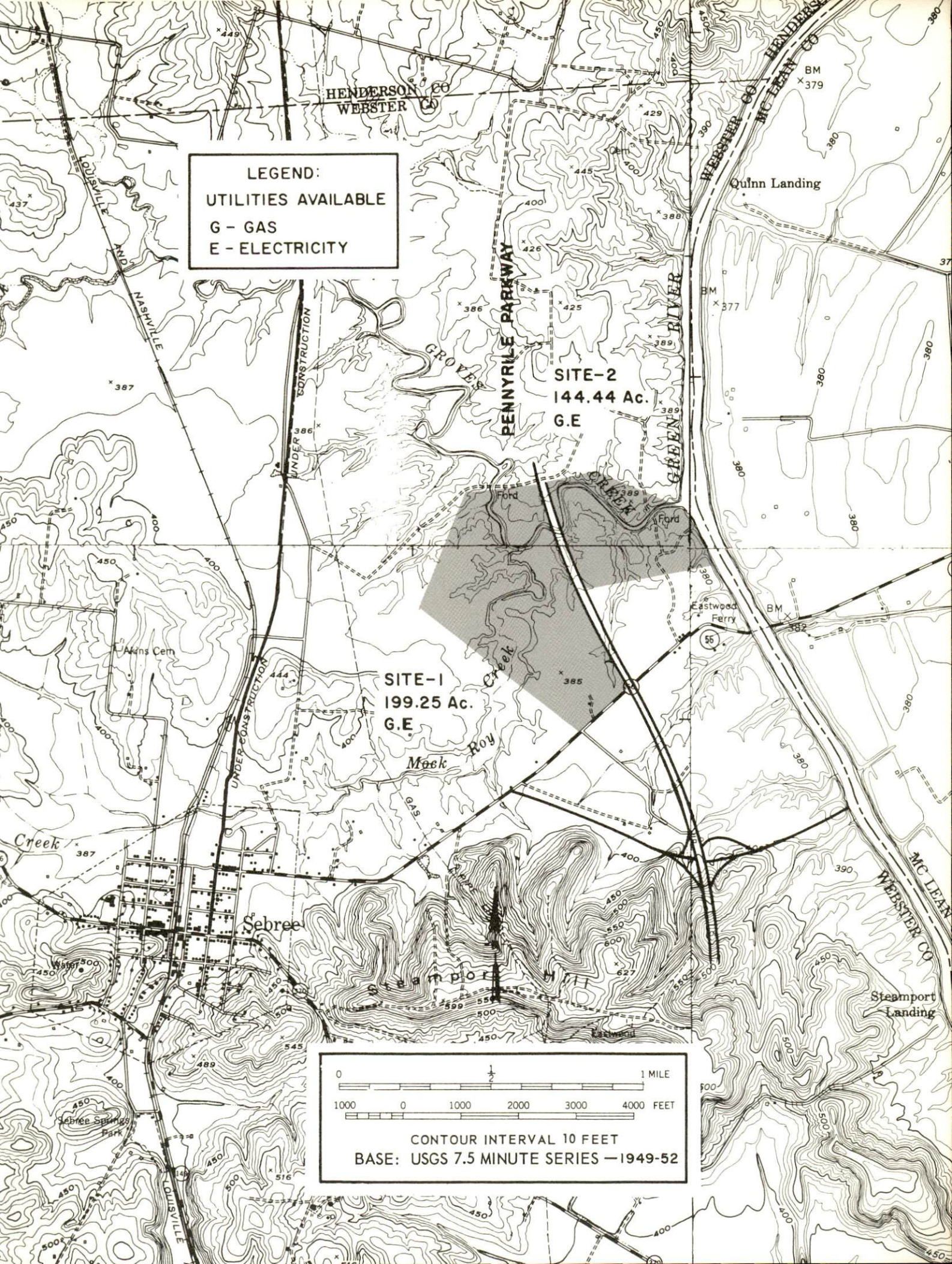
Source: Texas Gas Transmission Corporation

Electricity:

Company serving: Henderson-Union RECC

Remarks: A small 30-acre lake is under construction in the
eastern portion of this site near the Pennyrile Parkway.
It will take from one to two years for the rain-fill lake
to be filled to capacity.

LEGEND:
UTILITIES AVAILABLE
G - GAS
E - ELECTRICITY



SEBREE INDUSTRIAL SITE NO. 2
SITE SURVEY INFORMATION

SITE DESCRIPTION:

Total acreage: 144.44 acres

Location: Northeast of Sebree

Distance from city limits: 1 mile

Type neighborhood: Agricultural

Proximity to residential property: 1 mile ; Zoning: None

Ownership: Frank Vittetow, 208 Steele Street, Frankfort,
Kentucky, 40601

Cost: Subject to negotiation ; Terrain: Level to rolling

Elevation: 380-405 feet

Estimated grading cost: Nominal

Transportation:

Roadway access: County road to Kentucky Route 56

Type road, surface, width, etc. : Gravel at present

Distance from arterial street or highway: One-fourth mile

Railroads serving: Louisville & Nashville Railroad

Location of line: 1 1/2 miles

Waterways: Green River

Distance to commercial airport: Dress Memorial Airport,
Evansville, Indiana, 30 miles

(Continued)

SITE NO. 2 SURVEY INFORMATION
PAGE 2

Utilities:

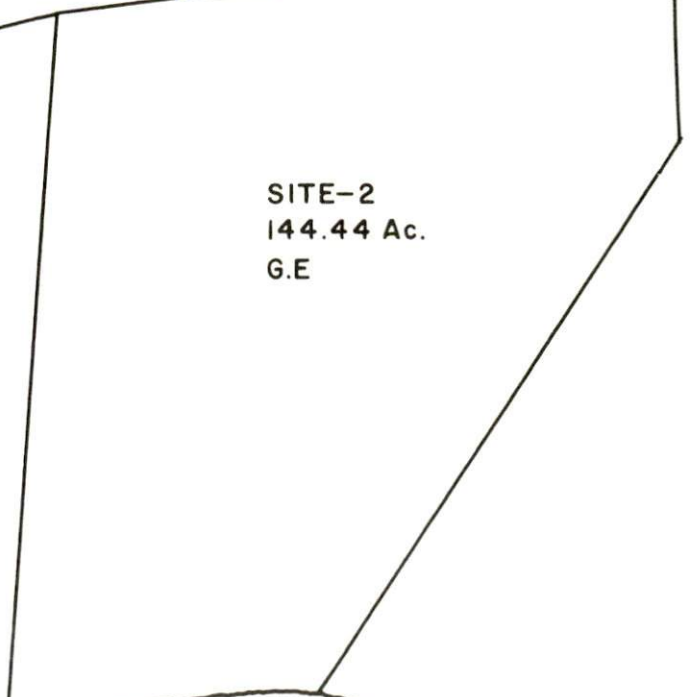
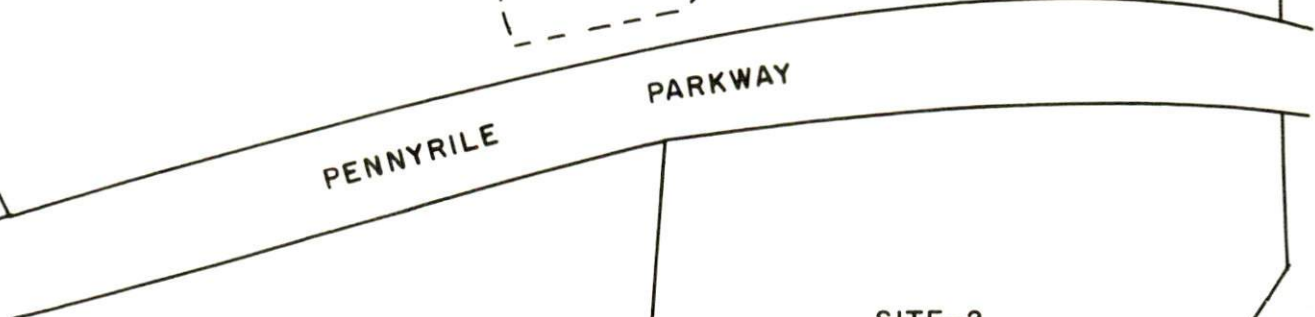
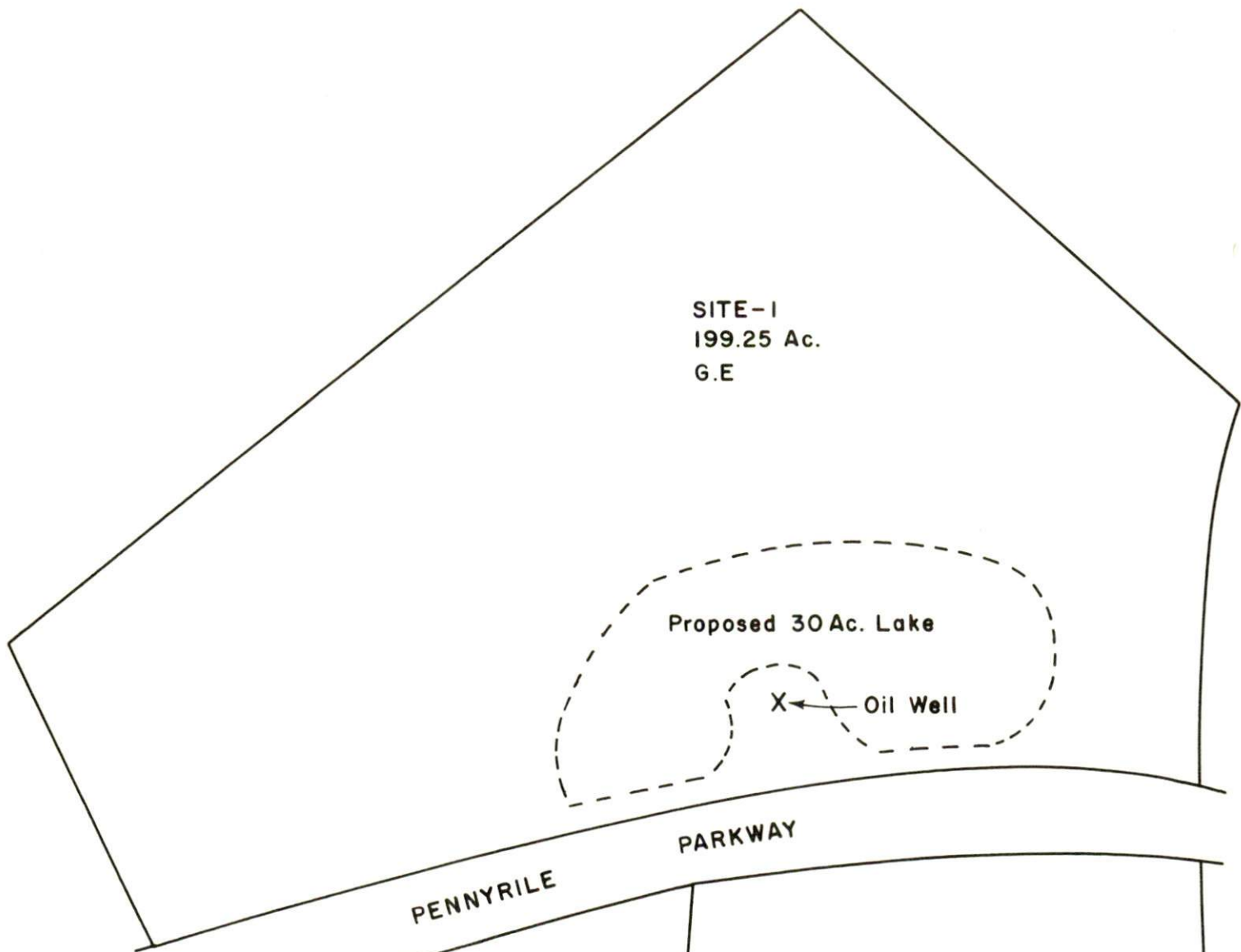
Gas:

Company: Western Kentucky Gas Company

Source: Texas Gas Transmission Corporation

Electricity:

Company serving: Henderson-Union RECC



LEGEND:
UTILITIES AVAILABLE
G - GAS
E - ELECTRICITY



SEBREE, KENTUCKY

LOCATION:

Sebree is located in the northwestern section of Kentucky, 136 miles west of Louisville and 150 miles north of Nashville, Tennessee.

POPULATION:

1960: Sebree - 1,139

Webster County - 14,244

LABOR SUPPLY:

The Sebree labor supply area includes Webster and all adjoining counties. Estimated number of workers available for industrial jobs in the labor supply area: 3,900 to 4,500 men and 4,000 to 4,600 women. Number of workers available from Webster County: 550 to 650 men and 700 to 800 women.

TRANSPORTATION:

Railroads: Sebree is served by the Evansville Division of the Louisville & Nashville Railroad, operating between Evansville, Indiana, and Nashville, Tennessee.

Air: Dress Memorial Airport, 30 miles from Sebree in Evansville, Indiana, is served by Delta and Eastern Airlines. The Owensboro-Daviess County Airport, 29 miles from Sebree, is served by Ozark Airlines.

Water: The Green River, navigable at present for 103 miles, with a 9-foot channel, is located within 3 miles of Sebree's corporate limits.

Trucks: Sebree is provided with both interstate and intrastate common carrier service by two trucking firms, Arnold Ligon Transfer Line, Inc., and McLean Trucking Company.

Bus Lines: Sebree is served by Southern Greyhound Bus Lines, which provides daily two-way service from Evansville, Indiana, to Nashville, Tennessee.

Highways: Sebree is served by U. S. Highway 41 and Kentucky Routes 56, 132 and 370. Sebree is 31 miles north of the Western Kentucky Parkway.

The new Pennyryle Parkway passes within one-half mile of Sebree. The highway, when completed, will provide a 4-lane highway from Evansville, Indiana, to the Tennessee border.

HIGHWAY DISTANCES: From Sebree, Kentucky, to:

<u>Town</u>	<u>Miles</u>	<u>Town</u>	<u>Miles</u>
Atlanta, Ga.	389	Lexington, Ky.	206
Birmingham, Ala.	345	Louisville, Ky.	136
Chicago, Ill.	330	Nashville, Tenn.	123
Cincinnati, Ohio	261	New York, N. Y.	916
Detroit, Mich.	519	Pittsburgh, Pa.	618
Knoxville, Tenn.	340	St. Louis, Mo.	212

UTILITIES:

Electricity: The city of Sebree is served with electric power by the Kentucky Utilities Company. Webster County is served by the Henderson-Union RECC.

Natural Gas: Sebree is served by the Western Kentucky Gas Company, whose source of supply is the Texas Gas Transmission Corporation. The size of the transmission line entering the city is 4 inches. The specific gravity is .60 and the BTU content is 1,000. The distribution pressure varies from 15 to 20 psi.

Public Water Supply: Sebree is provided finished water by the Sebree Water Works, whose sources of supply are three drilled wells. The treatment plant has a capacity of 180,000 gpd. The average daily water use is 95,000 gallons and the peak daily use has been 120,000 gallons. Storage capacity for treated water totals 200,000 gallons.

Sewerage: Sebree completed and placed into operation in 1965 a new \$298,000 sewer system and treatment plant. It is a complete secondary treatment plant using a modified activated sludge process--extended aeration. The treatment plant, designed for a population of 2,000, has a capacity of 170,000 gallons per day. Final discharge is in Graves Creek, north of the city. Sewerage rates are 70 percent of the water bill.

HEALTH:

Hospitals: Sebree is served by hospitals located in Henderson and Madisonville, Kentucky. The Methodist Hospital, Inc., located in Henderson, 18 miles distant, has a capacity of 115 beds and 22 bassinets. The Hopkins County Hospital and the Trover Clinic, located in Madisonville, a distance of 22 miles, have a combined capacity of 300 beds and 18 bassinets.

Public Health: The Webster County public health office is located in Dixon, the county seat, 12 miles distant. The present programs include communicable disease control, crippled children, preschool health, maternal and child care, immunization, and general services.

EDUCATION:

Graded Schools: Sebree is served by the Webster County School System. The system has five elementary schools and one high school. Student-teacher ratios for the elementary schools and high school are 28 to 1 and 20 to 1, respectively.

Vocational Schools: Sebree is served by the Madisonville Area Vocational-Technical School, 22 miles distant. Courses offered include the following: auto mechanics, auto body mechanics, drafting, electronics technician, general industrial electricity, machine shop, and woodworking and carpentry.

Colleges: Institutions of higher learning in the Sebree area include:

Austin Peay State College, Clarksville, Tennessee, 80 miles
Brescia College, Owensboro, Kentucky, 32 miles
Kentucky Wesleyan College, Owensboro, Kentucky, 32 miles
Evansville College, Evansville, Indiana, 30 miles
Henderson Community College, Henderson, Kentucky, 18 miles
Murray State University, Murray, Kentucky, 109 miles
Western Kentucky University, Bowling Green, Kentucky,
91 miles

PREVAILING WAGE RATES:

<u>Classification</u>	<u>Wages Per Hour</u>
Unskilled	\$1.40 to \$1.50
Semiskilled	1.40 to 1.75
Skilled	2.00 to 3.75

	<u>Wages Per Week</u>
Secretarial	\$45 to \$75
Clerical	45 to 65

EXISTING INDUSTRY:

<u>Firm</u>	<u>Product</u>	<u>Employment</u>		
		<u>Male</u>	<u>Female</u>	<u>Total</u>
Armour Mfg. Co.	Mobile homes	126	14	140
M. F. Bryant & Son Milling Co.	Grain elevators	5	0	5
Concrete Service Co.	Ready mixed concrete	6	0	6
Rankin Melton Lumber Co.	Rough lumber	6	1	7
The Sebree Banner	Newspaper	2	1	3

UNIONS:

The only union represented in Webster County is the United Mine Workers of America, District 50.

TAXES:

Property tax rates per \$100 of assessed value for Sebree and Webster County, 1966:

<u>Taxing Unit</u>	<u>Sebree</u>	<u>Webster County</u>
County	\$.131	\$.131
City	.250	
State	.015	.015
School	.398	.398
Health	.019	.019
Total	\$.813	\$.563

RECREATION:

Local: Sebree Springs Park is located on a 15-acre tract north of the city. It has complete facilities for picnicking and camping, several shelter houses, a regulation lighted little league baseball field, outdoor grills, and playground equipment.

There is also a lighted baseball diamond on the grounds of Sebree Elementary School which can be used by the community. There is a great amount of interest in the area in horses and show horses in particular. Showing gaited and walking horses is probably the leading type of adult recreation. Sebree has its own show grounds, the Sebree Horseshow Grounds, where the Sebree Improvement Association holds an annual show.

Area: The Sebree area abounds with some of the best area recreational facilities in the United States. Eighteen miles north of Sebree is Audubon State Park, built in memorial to J. J. Audubon, the famous naturalist and painter of bird pictures. Audubon Park offers cabins, camp sites, picnic facilities, beach, bathhouse and boating facilities. A new nine-hole golf course is being built. The major attraction is the historical museum containing many of Audubon's original works.

Pennyrile Forest State Park, located in Dawson Springs, a distance of 39 miles, features housekeeping cottages and cabins, dining room, recreational lodge, beach, bathhouse, boathouse, boat dock, and fishing and picnic facilities.

Sebree is 79 miles from Kentucky Lake. Located on this lake, the largest man-made lake in the world (2,400 miles of shoreline), are three state parks: Kenlake State Park, Kentucky Dam Village State Park, and Cherokee State Park. From April to October the lake is a paradise for fishermen, campers, hunters, and boating and water skiing enthusiasts.

Barkley Lake, only 1 mile east of Kentucky Lake, extends 117 miles toward Nashville on the Cumberland River. The two lakes are connected by a canal and many facilities on Barkley Lake are similar to those on Kentucky Lake.

This copy has been prepared by the Kentucky Department of Commerce, Division of Research, and the cost of printing paid from state funds.

MAJOR HIGHWAY NETWORK IN KENTUCKY

Compiled By
KENTUCKY DEPARTMENT
OF
COMMERCE
Frankfort, Kentucky
SEPT. 1966

LEGEND

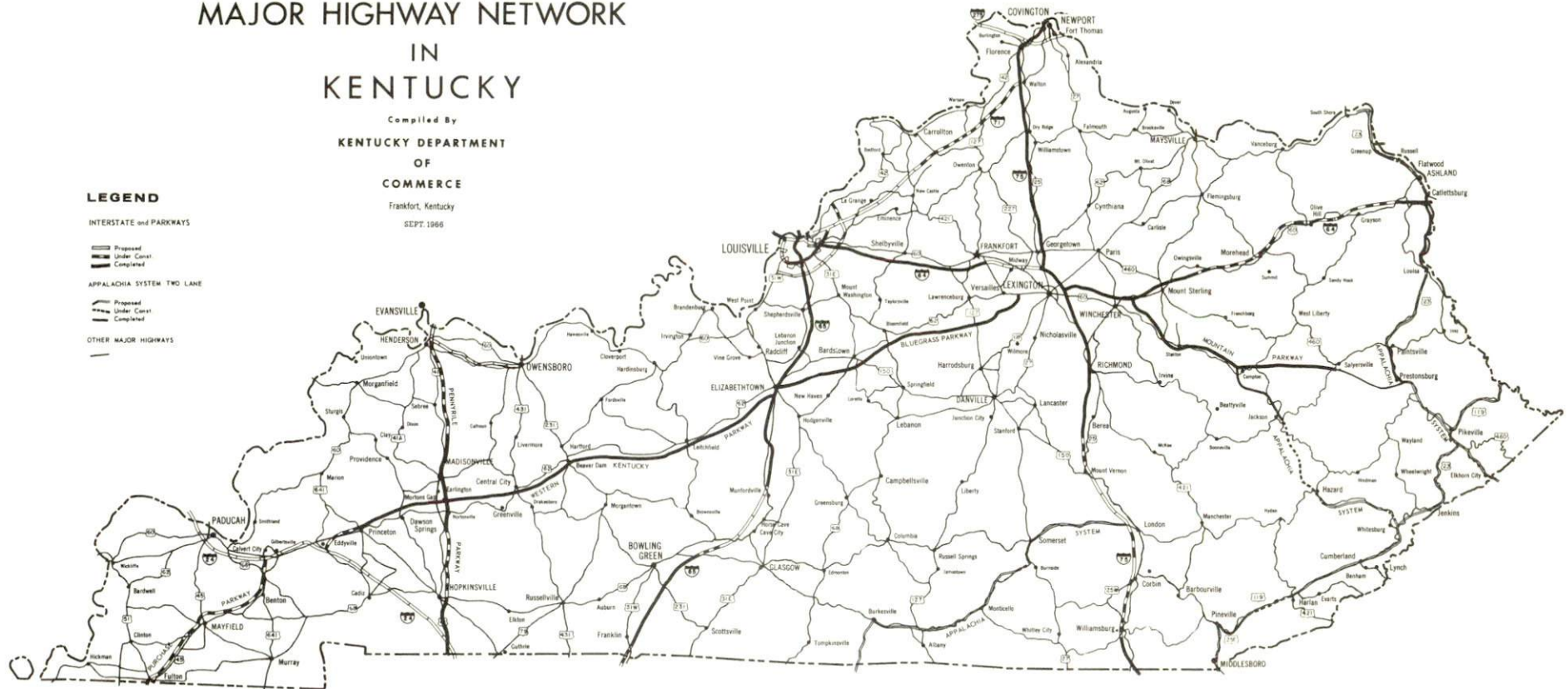
INTERSTATE and PARKWAYS

Proposed
Under Const.
Completed

APPALACHIA SYSTEM TWO-LANE

Proposed
Under Const.
Completed

OTHER MAJOR HIGHWAYS



MAJOR HIGHWAY NETWORK



PREPARED BY
KENTUCKY DEPARTMENT OF COMMERCE
FRANKFORT, KENTUCKY

AND

SEBREE IMPROVEMENT ASSOCIATION

1967