

1967

Industrial Resources: Fayette County - Lexington

Kentucky Library Research Collections
Western Kentucky University, spcol@wku.edu

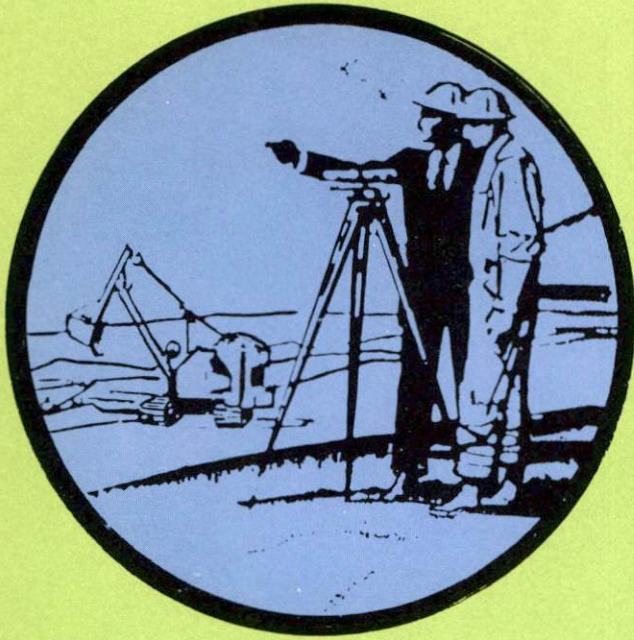
Follow this and additional works at: https://digitalcommons.wku.edu/fayette_cty

 Part of the [Business Administration, Management, and Operations Commons](#), [Growth and Development Commons](#), and the [Infrastructure Commons](#)

Recommended Citation

Kentucky Library Research Collections, "Industrial Resources: Fayette County - Lexington" (1967). *Fayette County*. Paper 16.
https://digitalcommons.wku.edu/fayette_cty/16

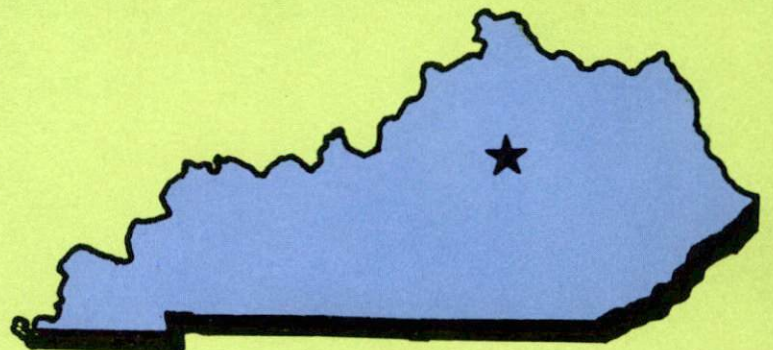
This Report is brought to you for free and open access by TopSCHOLAR®. It has been accepted for inclusion in Fayette County by an authorized administrator of TopSCHOLAR®. For more information, please contact topscholar@wku.edu.



YOUR GUIDE TO A

KENTUCKY INDUSTRIAL SITE

**LEXINGTON
HAS THE
LOCATION**





AERIAL VIEW OF LEXINGTON, KENTUCKY

LEXINGTON INDUSTRIAL FOUNDATION, INC.

The Lexington Industrial Foundation, Inc., a nonprofit development corporation, was organized in 1955 for the purpose of providing suitable industrial acreage at a reasonable and stable price to attract new industry to the primarily agricultural Bluegrass area of north-central Kentucky. The original foundation property is now occupied by Square D Company, Dixie Cup, Mengel Box Company, and Vogue-Rattan Company.

The Industrial Foundation recently purchased additional acreage and now owns sites of 49 and 57 acres, adjoining and near the original property. Westinghouse Air Brake Company occupies property between these two sites.

The Lexington Industrial Foundation property is located northwest of the City of Lexington. Access to the partly limited access Lexington By-Pass and to Interstate Routes 64 and 75 is provided by U.S. 421. The sites are approximately 4 miles from the I-64 - I-75 Interchange.

Rail service is provided by the Southern Railway System, electric power by the Kentucky Utilities Company, natural gas by the Columbia Gas Company, water by the Lexington Water Company, and sewers are provided by the City of Lexington.

This property is available to suitable industry at a nonprofit price.

LEGEND

UTILITIES AVAILABLE

- W - WATER
- G - GAS
- E - ELECTRICITY
- S - SEWERAGE



0 1 1 MILE

1000 0 1000 2000 3000 4000 FEET

CONTOUR INTERVAL 10 FEET
 BASE: USGS 7.5 MINUTE SERIES - 1959

SOU. R.R.

K.U.

SQUARE D

MENGEL

BELT LINE

DIXIE CUP

MERCER ROAD

49 Ac.

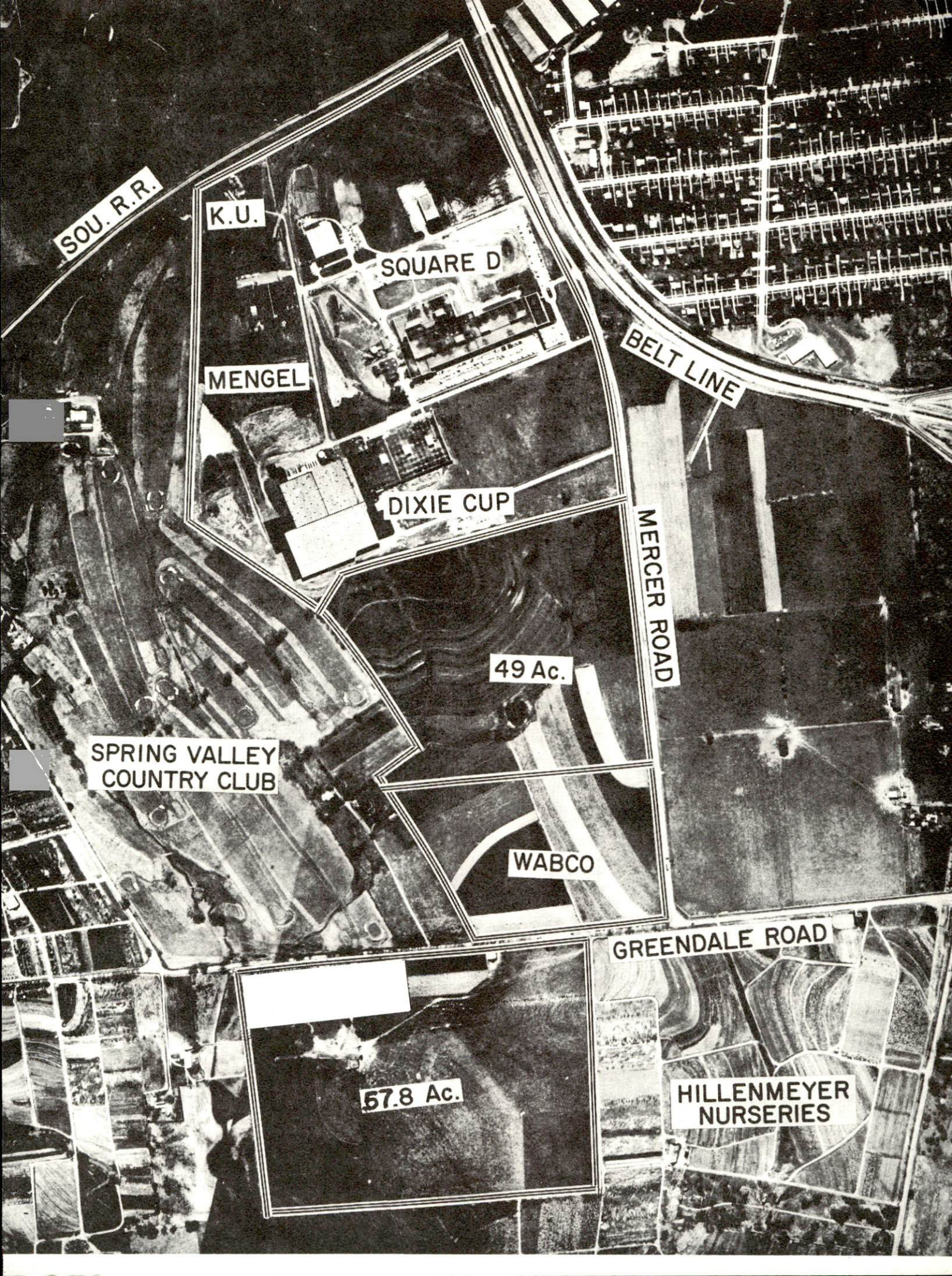
SPRING VALLEY
COUNTRY CLUB

WABCO

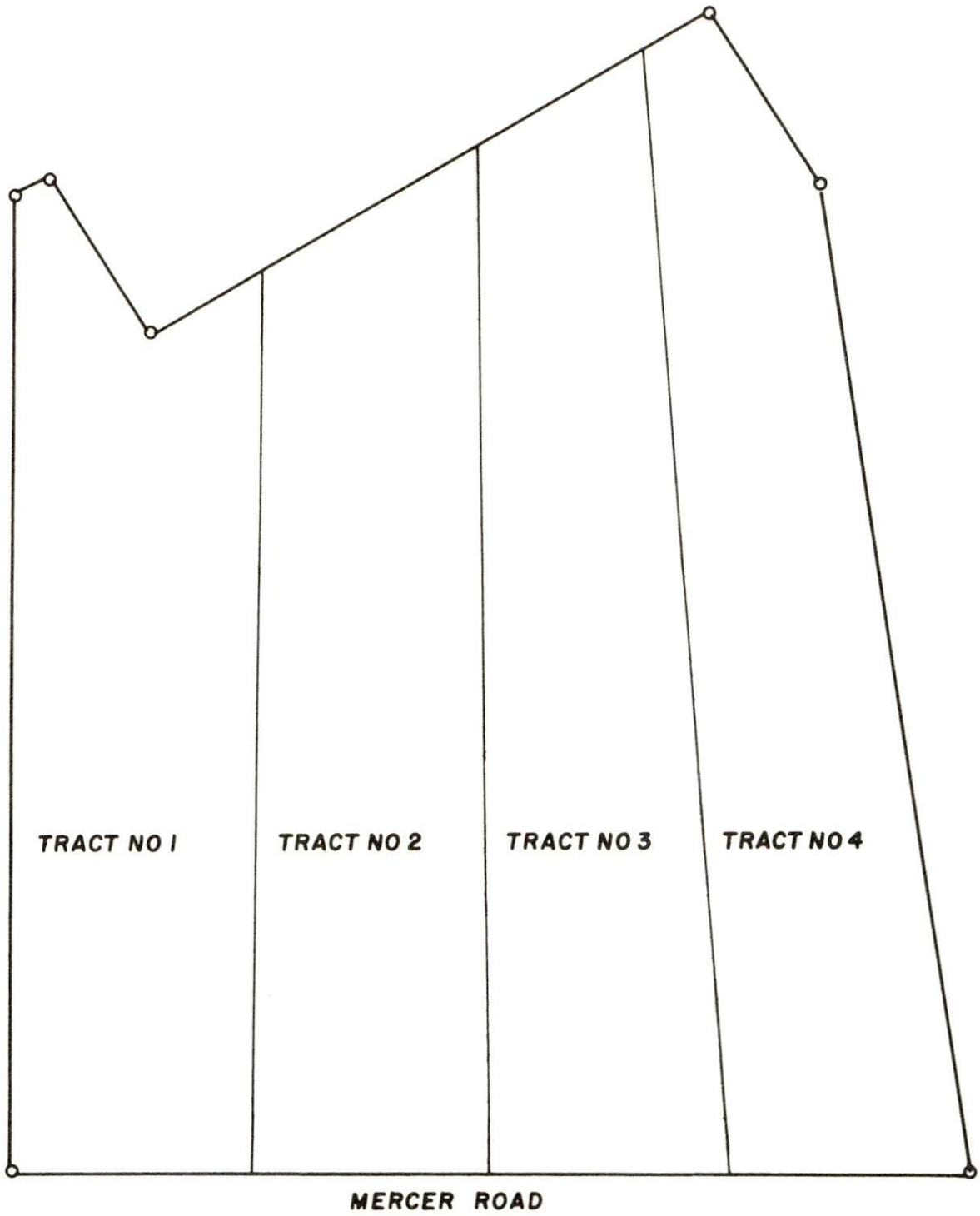
GREENDALE ROAD

57.8 Ac.

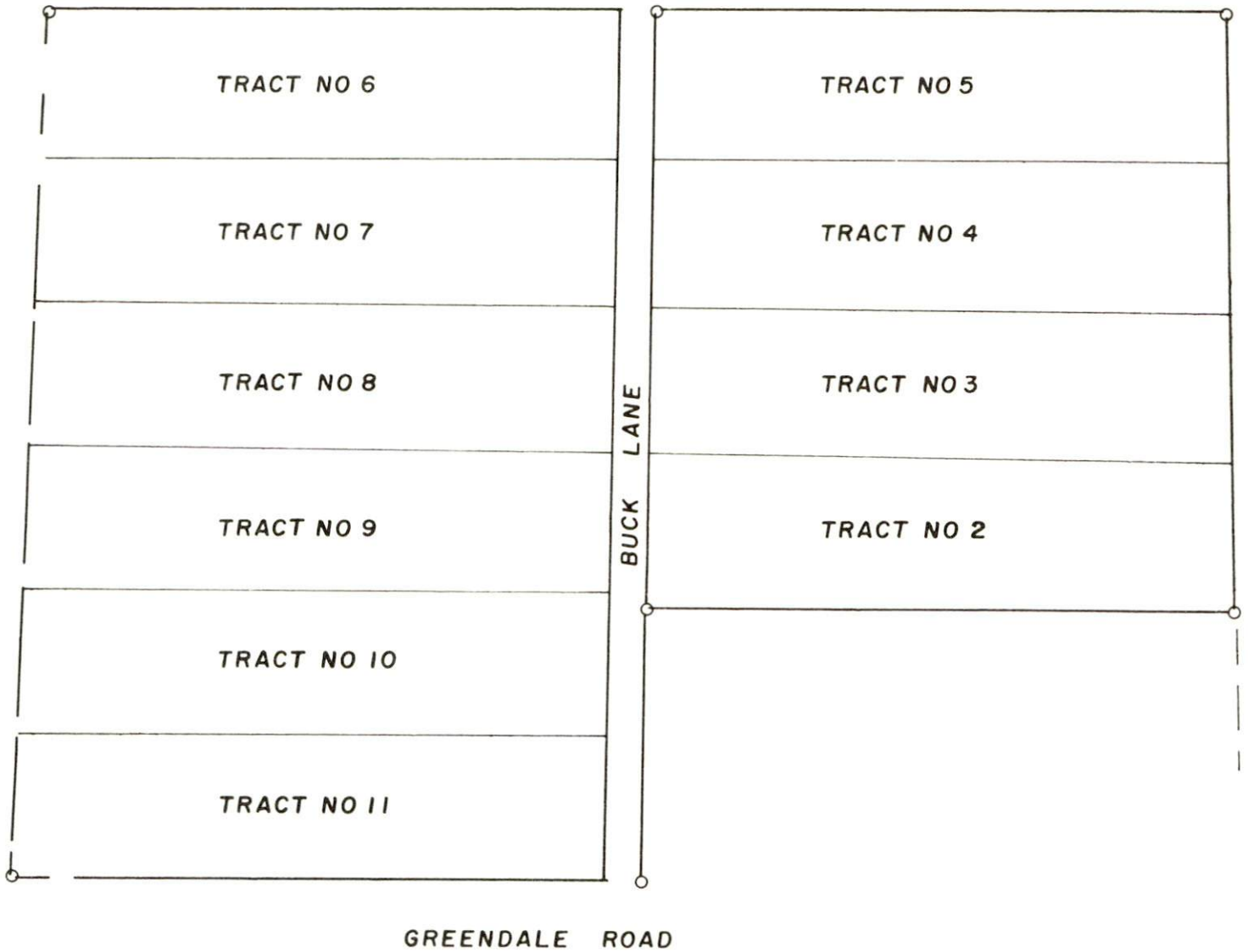
HILLENMEYER
NURSERIES

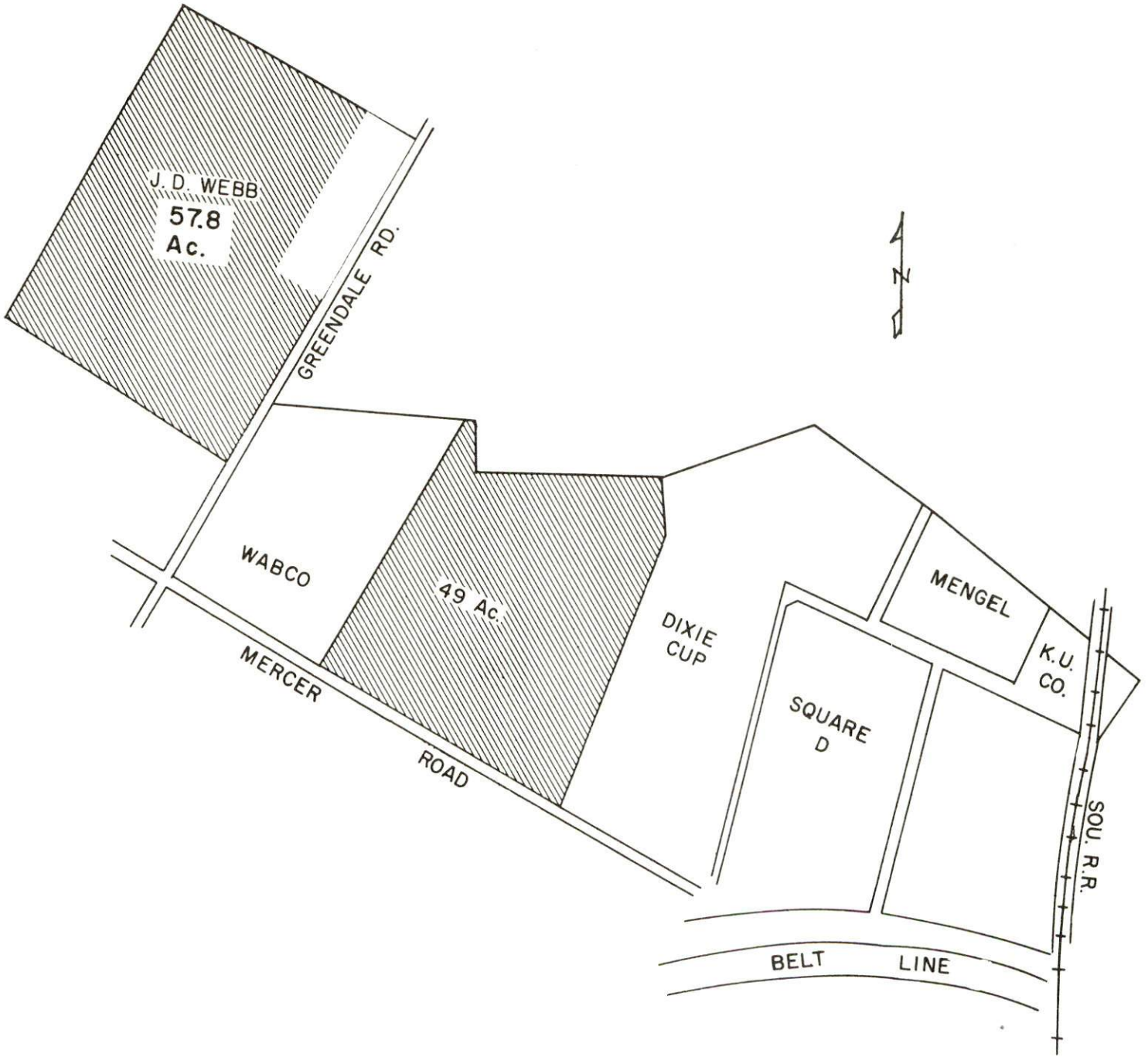


INDUSTRIAL FOUNDATION UNIT 1



INDUSTRIAL FOUNDATION UNIT 2





J. D. WEBB
57.8
Ac.

GREENDALE RD.

WABCO

49 Ac.

DIXIE
CUP

MERCER
ROAD

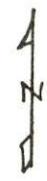
SQUARE
D

MENGEL

K.U.
CO.

SOU. R.R.

BELT
LINE



LOCATION:

Lexington is located in the famed Bluegrass region of central Kentucky. It is approximately 79 miles from Cincinnati, Ohio, on Interstate 75 and 76 miles from Louisville, Kentucky, on Interstate 64.

POPULATION:

1967 (Est.): Lexington - 82,000 Fayette County - 160,000

LEXINGTON LABOR SUPPLY AREA:

Includes Fayette and all adjoining counties. Estimated number of workers available for industrial jobs in the labor supply area: 3,250 to 3,950 men and 4,050 to 4,750 women. Number of workers available from Fayette County: 90 to 1,000 men and 1,500 to 1,600 women.

The future labor supply will include 11,749 boys and 14,476 girls who will become 18 years of age by 1973.

TRANSPORTATION:

Railroads: The Louisville & Nashville Railroad, Chesapeake & Ohio Railway, and the Southern Railway System provide rail service to Lexington.

Air: Blue Grass Field, 4.5 miles west of Lexington, has three runways and is served by Eastern, Piedmont, and Delta Airlines with 25 flights daily.

Water: Lexington and Fayette County have access to the inland waterway system via the Kentucky River, which is located approximately 12 miles southwest of Lexington.

Trucks: More than 25 truck and transfer lines provide local and long distance service to and from Lexington.

Bus: Southern Greyhound Bus Lines, Cooper Bus Lines, and Central Stage Lines all provide Lexington with bus transportation. Local bus service is provided by the Lexington Transit Corporation.

Highways: Highways serving Lexington include: Interstate 64, Interstate 75, Bluegrass Parkway, U.S. Routes 25, 27, 60, 68, and 421, and Kentucky Routes 353, 913, and 922.

UTILITIES:

Electricity: The Kentucky Utilities Company, which has a generating capacity of 740,000 KW, serves Lexington and Fayette County. The company has 51,676 meters in the Lexington area and serves some 78 counties throughout the state. Rates are available through the company's Industrial Development Department in Lexington.

Natural Gas: Lexington is served by Columbia Gas of Kentucky, Inc., whose source of supply is the Kentucky Gas Transmission Corporation. BTU content is 1,050 and specific gravity is .6. The lines average in size from 2 to 12 inches. There are 43,849 meters in the Lexington area.

Water: Water is provided by the Lexington Water Company, whose sources of supply are the Kentucky River, East Hickman Creek, and West Hickman Creek. Treatment capacity is 46,000,000 gpd. Peak daily use has been 36,000,000 gallons while average daily use is 18,000,000 gallons. There are 41,437 meters in the Lexington area.

Sewerage: Sewerage treatment is by the Lexington City Sewerage Department, with a treatment capacity of 12,000,000 gallons. Average daily flow is 10,500,000 gallons. Ninety percent of the city is provided service.

Telephone and Telegraph: The General Telephone Company serves 50,541 customers with 89,999 telephones in the Lexington district. The service includes direct distance dialing and mobile phone service.

HEALTH:

Lexington is served by 4 general hospitals which have a total of 1,099 beds. The city has over 300 physicians and surgeons, 90 dentists, sanitariums, clinics, and nursing homes. Public health service is provided by the Lexington-Fayette County Health Department, which has a well-rounded health program.

EDUCATION:

Graded: The Lexington Independent School District has a total of 17 schools - 12 elementary, 3 junior high, 2 high schools - with a total enrollment of 11,160. Student-teacher ratio is 23-1. The Fayette County School System has a total of 27 schools - 18 elementary, 6 junior high, 3 high schools - with a total enrollment of 22,360. Student-teacher ratio is 24-1.

Vocational: The Lafayette Vocational School serves the Lexington area.

Colleges: The University of Kentucky, Transylvania College, and the Lexington Theological Seminary are located in Lexington.

CITY SERVICES:

Fire Protection: The Lexington area is served by the Lexington Fire Department and the Fayette County Fire Department. Combined they have over 260 firemen and over 20 vehicles equipped with latest fire fighting equipment.

Police Protection: The Lexington City Police and the Fayette County Police Departments serve Lexington. Within the two departments are over 200 officers and other personnel, 60 police cruisers, and 14 motorcycles.

Garbage and Sanitation: Free garbage collection is provided twice weekly in Lexington.

COMMUNICATION:

Postal Facilities: Lexington has a first-class post office with over 600 employees. Mail is received and dispatched 26 times daily. There are 139 city routes, 7 rural, and 17 star routes.

Newspapers: The Lexington-Herald, a morning paper, has a circulation of 55,000 and the Lexington Leader, an evening paper, has a circulation of 31,000. The Sunday Lexington Herald-Leader has a circulation of 80,000.

Radio: Lexington is served by five of its own radio stations.

Television: Television reception is from two television stations within Lexington, three stations from Louisville, Kentucky, and three stations from Cincinnati, Ohio.

LIBRARIES:

Lexington is served by the Lexington Public Library, University of Kentucky, and Transylvania College.

CHURCHES:

Lexington has more than 145 churches representing more than 30 denominations.

HOUSING:

Houses for rent are in short supply. Rental price range for two- and three- bedroom houses is \$125 per month and up. Many apartments are readily available to rent. Price range for these begins at \$90 and up.

Construction cost for three-bedroom brick houses begins at \$12,500.

RECREATION:

Local: The Lexington City Recreation Department and the Fayette County Recreation Department both have a complete recreation program for children and adults. Lexington has three swimming pools, five bowling alleys, four country clubs with golf courses, and one 18-hole par-3 golf course. Thoroughbred horse racing, trotting races, horse shows and hunt clubs are also available in Lexington.

Area: Lexington is within a 100-mile radius of many state parks and lakes which provide all varieties of recreational activities.

MANUFACTURING:

The following firms are those employing more than 200 persons in the Lexington area:

<u>Firm</u>	<u>Product</u>	<u>Employment</u>		
		<u>Male</u>	<u>Female</u>	<u>Total</u>
General Electric Co.	Auto seal beam headlights	99	251	350
International Business Machines	Electric typewriters	4,482	606	5,088
P. Lorillard Co.	Tobacco redrying	150	95	245
Liggett & Myers Tobacco Co.	Tobacco redrying	200	150	350

R. J. Reynolds Tobacco Co.	Tobacco processing	300	100	400
Lexington Redryers, Inc.	Tobacco processing			850
Square D Company	Electrical switches, circuit breaker devices	901	428	1,329
Trane Co.	Air conditioning equipment, heating equipment	650	100	750
Westinghouse Air Brake Co.	Hydraulic & pneu- matic cylinders	282	83	365
Brown & Williamson Tobacco Corp.	Tobacco redrying	184	177	361
Dixie Cup Division, American Can Co.	Paper cups and containers	170	165	335
Irving Air Chute Co., Inc.	Parachutes, seat belts			500
Lexington Herald- Leader Co.	Newspaper	310	70	380
Parker Seal Co.	Synthetic rubber rings	205	268	473
Procter & Gamble Mfg. Co.	Peanut butter			250
Pepsi Cola Bottling Co.	Carbonated beverages			250
Standard Products Co.	Motor vehicle hardware			250

For detailed information concerning Lexington
please request publication "Industrial Resources,
Lexington, Kentucky."

MAJOR HIGHWAY NETWORK IN KENTUCKY

Compiled By
KENTUCKY DEPARTMENT
OF
COMMERCE
Frankfort, Kentucky
SEPT. 1966

LEGEND

INTERSTATE and PARKWAYS

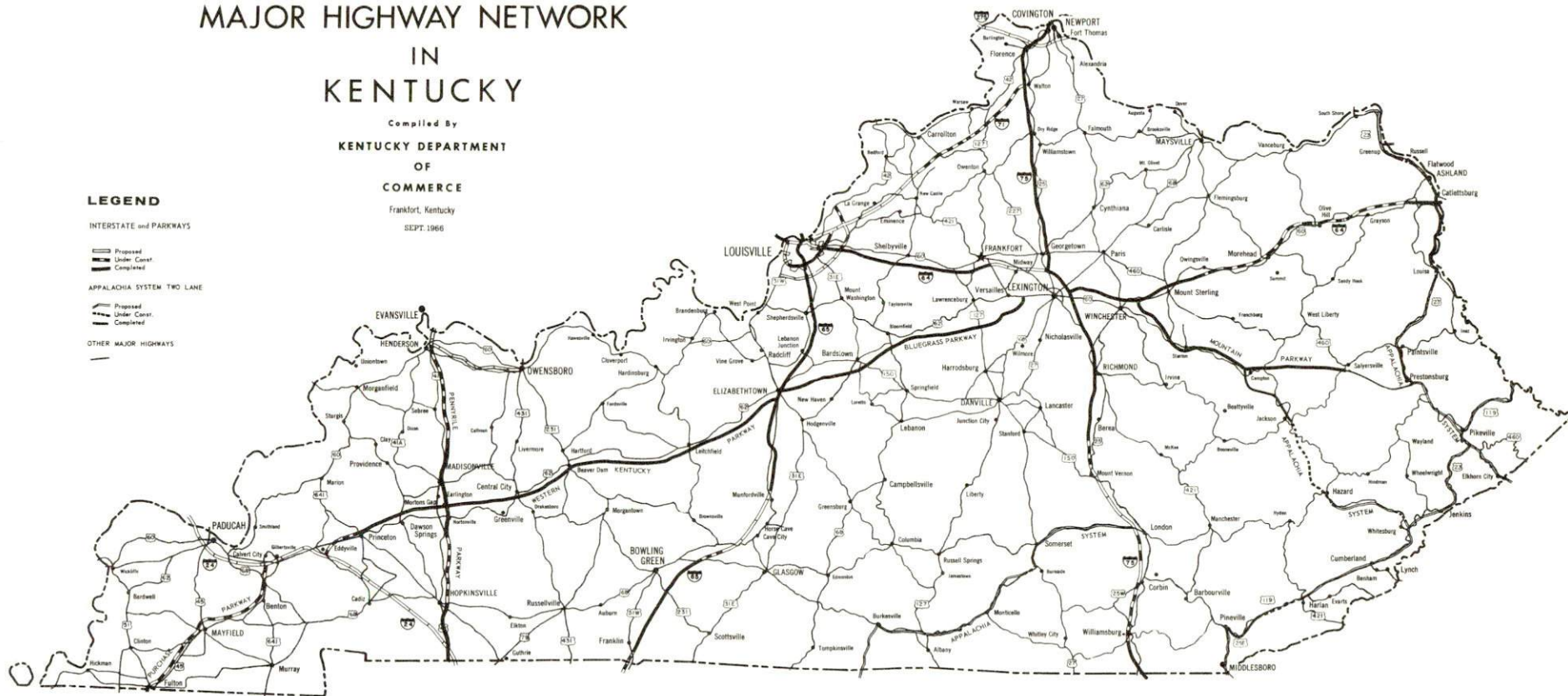
Proposed
Under Const.
Completed

APPALACHIA SYSTEM TWO-LANE

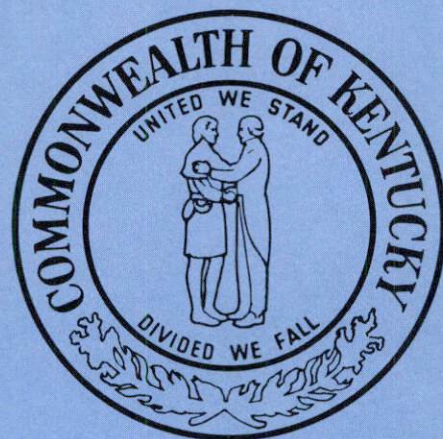
Proposed
Under Const.
Completed

OTHER MAJOR HIGHWAYS

MAJOR HIGHWAY NETWORK



This copy has been prepared by the Kentucky Department of Commerce,
Division of Research, and the cost of printing paid from state funds. /



PREPARED BY
KENTUCKY DEPARTMENT OF COMMERCE
FRANKFORT, KENTUCKY

AND

LEXINGTON INDUSTRIAL FOUNDATION,
INC.

1967