

1970

# Industrial Resources: Jackson County

Kentucky Library Research Collections  
Western Kentucky University, [spcol@wku.edu](mailto:spcol@wku.edu)

Follow this and additional works at: [https://digitalcommons.wku.edu/jackson\\_cty](https://digitalcommons.wku.edu/jackson_cty)



Part of the [Business Administration, Management, and Operations Commons](#), [Growth and Development Commons](#), and the [Infrastructure Commons](#)

---

## Recommended Citation

Kentucky Library Research Collections, "Industrial Resources: Jackson County" (1970). *Jackson County*. Paper 11.  
[https://digitalcommons.wku.edu/jackson\\_cty/11](https://digitalcommons.wku.edu/jackson_cty/11)

This Report is brought to you for free and open access by TopSCHOLAR®. It has been accepted for inclusion in Jackson County by an authorized administrator of TopSCHOLAR®. For more information, please contact [topscholar@wku.edu](mailto:topscholar@wku.edu).

JACKSON COUNTY INDUSTRIAL SITES

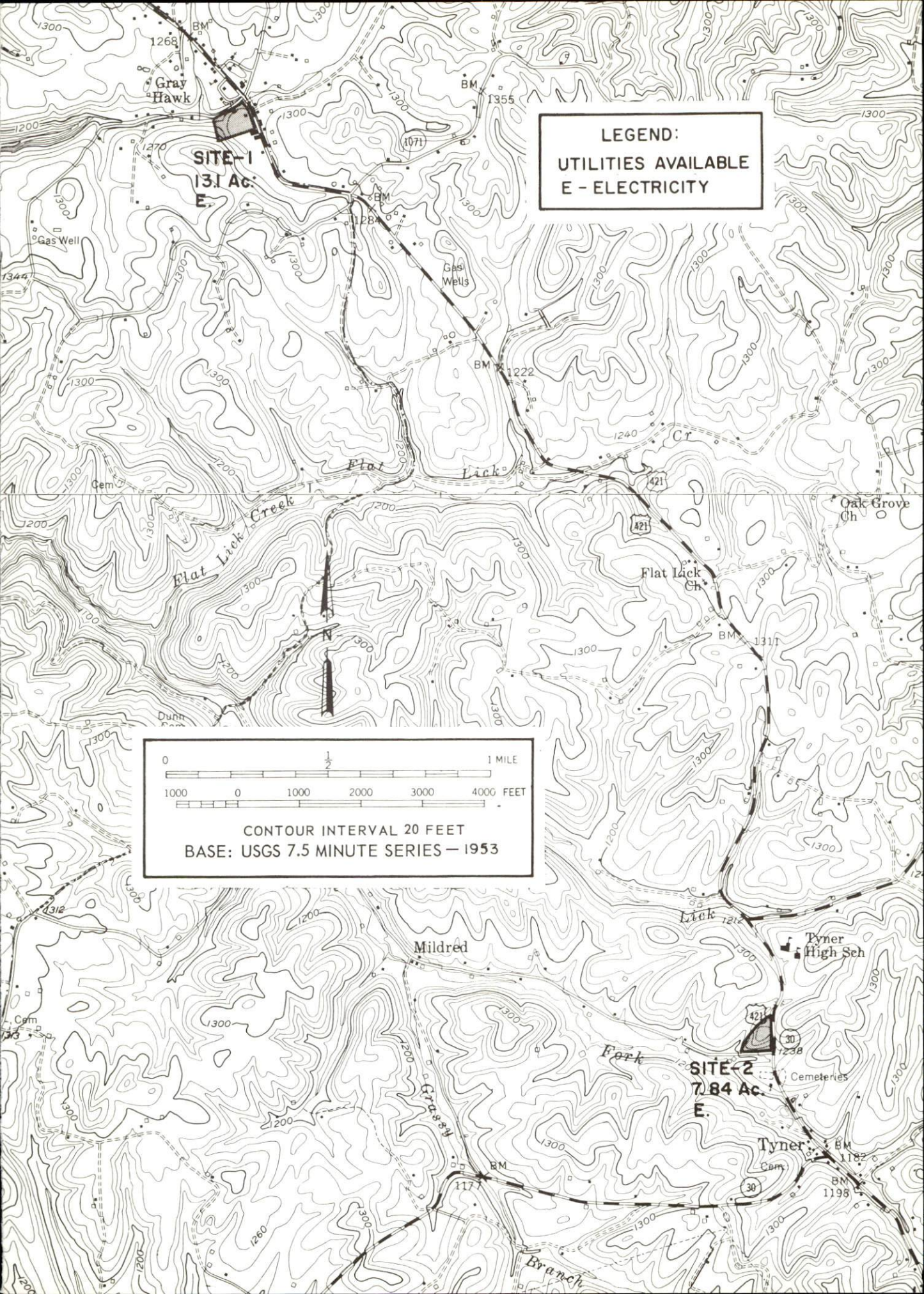
1970

## JACKSON COUNTY INDUSTRIAL SITES

For additional information concerning the following sites, contact Elmer Cunnagin, Jr., Jackson County Industrial Foundation, Inc.; or the Kentucky Department of Commerce, Frankfort, Kentucky.

SITE #1: ACREAGE AND TOPOGRAPHY: 13.1 acres, level  
LOCATION: Approximately 6 miles southeast of the  
McKee city limits at Gray Hawk, Kentucky  
HIGHWAY ACCESS: Fronts on U. S. 421; bounded on  
the north by paved county road  
RAILROADS: Not rail served  
WATER: Jackson County Water Commission  
SIZE LINE: 6-inch line, by Spring 1971  
GAS: Natural gas not available  
ELECTRICITY: Jackson County RECC  
SEWERAGE: Package plant necessary  
OPTIONED BY: Jackson County Industrial Foundation, Inc.

SITE #2: ACREAGE AND TOPOGRAPHY: 7.84 acres, rolling  
LOCATION: 8 miles southeast of the city limits of  
McKee at Tyner, Kentucky  
HIGHWAY ACCESS: Fronts on U. S. 421; bounded on  
the south by Kentucky 1238  
RAILROADS: Not rail served  
WATER: Jackson County Water Commission  
SIZE LINE: 6-inch line, by Spring 1971  
GAS: Natural gas not available  
ELECTRICITY: Jackson County RECC  
SEWERAGE: Package plant necessary  
OPTIONED BY: Jackson County Industrial Foundation, Inc.



**LEGEND:**  
UTILITIES AVAILABLE  
E - ELECTRICITY

0 1/2 1 MILE  
1000 0 1000 2000 3000 4000 FEET  
CONTOUR INTERVAL 20 FEET  
BASE: USGS 7.5 MINUTE SERIES - 1953

**SITE-1**  
13.1 Ac.  
E.

**SITE-2**  
7.84 Ac.  
E.

Gray Hawk

Flat Lick Creek

Mildred

Flat Lick Ch

Tyner High Sch

Cemeteries

Tyner

Branch

Oak Grove Ch

Gas Well

Gas Wells

Gem

Flat

Cr

Dunn

Cam

BM

BM

BM

1268

1355

1071

1222

1240

421

421

1311

1312

1300

1200

1300

1300

1200

1200

1300

1212

1300

1300

1300

1300

30

1238

1182

1198

1300

1200

1300

1344

1300

1200

1200

1300

1300

1300

1300

1300

1300

1300

1300

1200

1200

1300

1300

1300

1300

1300

1300

1300

1300

1300

1300

1300

1300

1300

1300

1300

1300

1300

1300

1300

1300

1300

1300

1300

1300

1300

1300

1300

1300

1300

1300

1300

1300

1300

1300

1300

1300

# CURRENT INDUSTRIAL RESOURCES

## CURRENT INDUSTRIAL RESOURCES, JACKSON COUNTY, KENTUCKY

This is a 1970 supplement to "Industrial Resources, Jackson County, Kentucky" which was published in 1969.

### Population

	<u>1970</u>	<u>1960</u>
McKee		234
Jackson County	9,796	10,677
Labor Market Area	117,411	112,842
(Includes Clay, Estill, Larue, Lee, Madison, Owsley, Rockcastle, and Jackson Counties.)		

### General Employment Characteristics

<u>Industry</u>	<u>Employment, 1969</u>	
	<u>Jackson County</u>	<u>Labor Market Area</u>
TOTAL	2,100	29,500
Agricultural	800	6,100
Nonagricultural	1,300	23,400
Manufacturing	100	3,622
Trade and Services	135	6,492
Government	500	7,800

### Manufacturing Employment

<u>Type Industry</u>	<u>Jackson County</u>			<u>Labor Market Area</u>		
	<u>1969</u>	<u>1959</u>	<u>%Change</u>	<u>1969</u>	<u>1959</u>	<u>%Change</u>
TOTAL	107	18	+494.4	3,590	1,851	+ 93.9
Food & kindred products	0	0	-	128	226	- 43.3
Apparel, textiles, leather	0	0	-	635	261	+ 143.3
Lumber & furniture	107	18	+494.4	272	409	- 33.5
Printing, publishing, paper	0	0	-	212	32	+ 562.5
Chemicals, petroleum, coal, rubber	0	0	-	640	479	+ 33.6
Stone, clay & glass	0	0	-	245	28	+ 775.0
Machinery & metal products	0	0	-	1,146	412	+ 178.2
Other	0	0	-	312	4	+7700.0

There are presently 4 manufacturing firms in Jackson County. Firms, employment, and year started operations:

<u>Firm</u>	<u>Employment</u>	<u>Year Started Operations</u>
Jackson County Sun	2	1926
Sand Gap Industries	6	1969
Katenkamp Lumber & Stove Co.	17	1963
Jackson County Lumber Co., Inc.	22	1958

### Labor Organizations

There are no unions representing manufacturing workers in Jackson County.

### Labor Supply

	<u>Jackson County</u>			<u>Labor Market Area</u>		
	<u>Total</u>	<u>Male</u>	<u>Female</u>	<u>Total</u>	<u>Male</u>	<u>Female</u>
Current	1,563	660	903	11,588	5,877	5,711
Potential additions next five years	1,251	654	597	12,653	6,387	6,266

### Personal Income

Jackson County, 1968: Total \$10,168,000; Per Capita \$964  
 1959: Total \$ 6,167,000; Per Capita \$594

### Property Tax Rates

Property tax rates per \$100 of assessed valuation, 1969:

<u>Taxing Unit</u>	<u>McKee</u>	<u>Jackson County</u>
State	\$ .015	\$ .015
County	.166	.166
School	.337	.337
City	.220	
Total	\$ .738	\$ .518

### Education

The Jackson County School System includes 1 high school with standard rating, and 5 elementary schools.

Vocational School: Clay County Extension Center, Manchester, 29 miles distant  
Courses offered: Auto Mechanics, Carpentry, Drafting, Electricity, Home Appliance Repair, Welding

## Transportation

Trucking Service: McDuffee Motor Freight, Inc. (Ellis Trucking)

Rail Service: Louisville & Nashville Railroad, 25 miles distant at Berea. Piggyback service is available at Richmond, 36 miles distant.

Air Service: London-Corbin War Memorial Airport, 36 miles distant

## Power and Fuel

### Electric Distributor

Jackson County RECC

### Natural Gas Distributor

Natural gas is not available.

## Water and Sewerage

Water: Daily treatment capacity - 140,000 gallons; average daily use - 40,000 gallons; maximum daily use - 50,000 gallons; storage capacity - 100,000 gallons; size distribution lines 3, 4, and 6 inches

Sewerage: Type treatment - primary and secondary, clarification, aeration, filtering, and chlorination; design population - 500; size of sewer mains - 4, 6, and 8 inches

## Local Government

Police Protection: Number of law enforcement officers - 1 (city), 2 (county)

Fire Protection: Number of volunteer firemen - 19

## Health

Nearest general hospital - Berea Hospital, Inc., 25 miles distant; capacity - 75 beds; staff - 14 doctors and 21 registered nurses

## Other Local Facilities

Telephone: The Peoples Rural Telephone Cooperative Corporation

Postal: Class of post office - Second; mail received - once daily; mail dispatched - once daily

Public Library: Jackson County Public Library; annual circulation - 23,000

## Financial Institutions

### Statement of Condition as of December 31, 1969

#### Banks

#### Assets

#### Deposits

Jackson County Bank

\$9,615,462.44

\$8,715,333.39

## Recreation

Local: Bond Memorial Park, located in McKee, has a basketball court, baseball diamond, croquet court and one tennis court. Little League baseball is sponsored by the community. Turkey Foot Park, 7 miles distant, offers excellent picnicking and camping areas. Rockcastle River, approximately 7 miles from McKee, and S-Tree Tower Park, 12 miles away, offer camping, swimming, and canoeing. Legal size trout are stocked in the Daniel Boone National Forest stream during March, April, May, June, and July each year.

Area: Natural Bridge State Resort Park, 48 miles distant  
Pine Mountain State Resort Park, 74 miles distant

## Industrial Sites

There are 2 industrial sites in McKee available for industrial use. There will be a 6-inch water line adjacent to the industrial sites by the Spring of 1971.

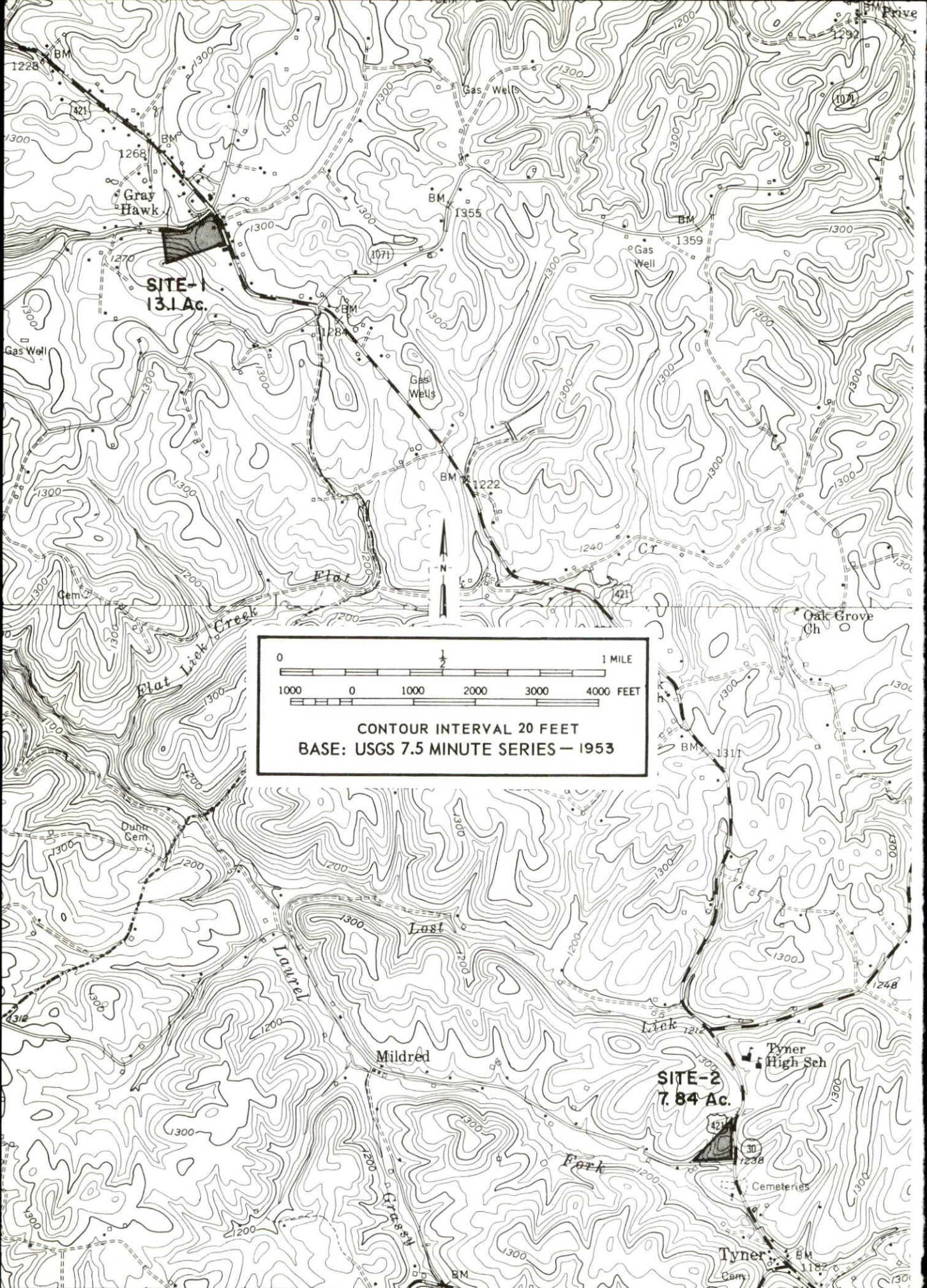


JACKSON COUNTY INDUSTRIAL SITES

1971

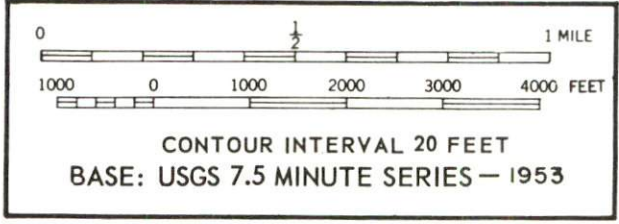
For more information about the following sites, contact Mr. Otis Johnson, McKee, Kentucky; or the Kentucky Department of Commerce, Washington and Wapping Streets, Frankfort, Kentucky 40601.

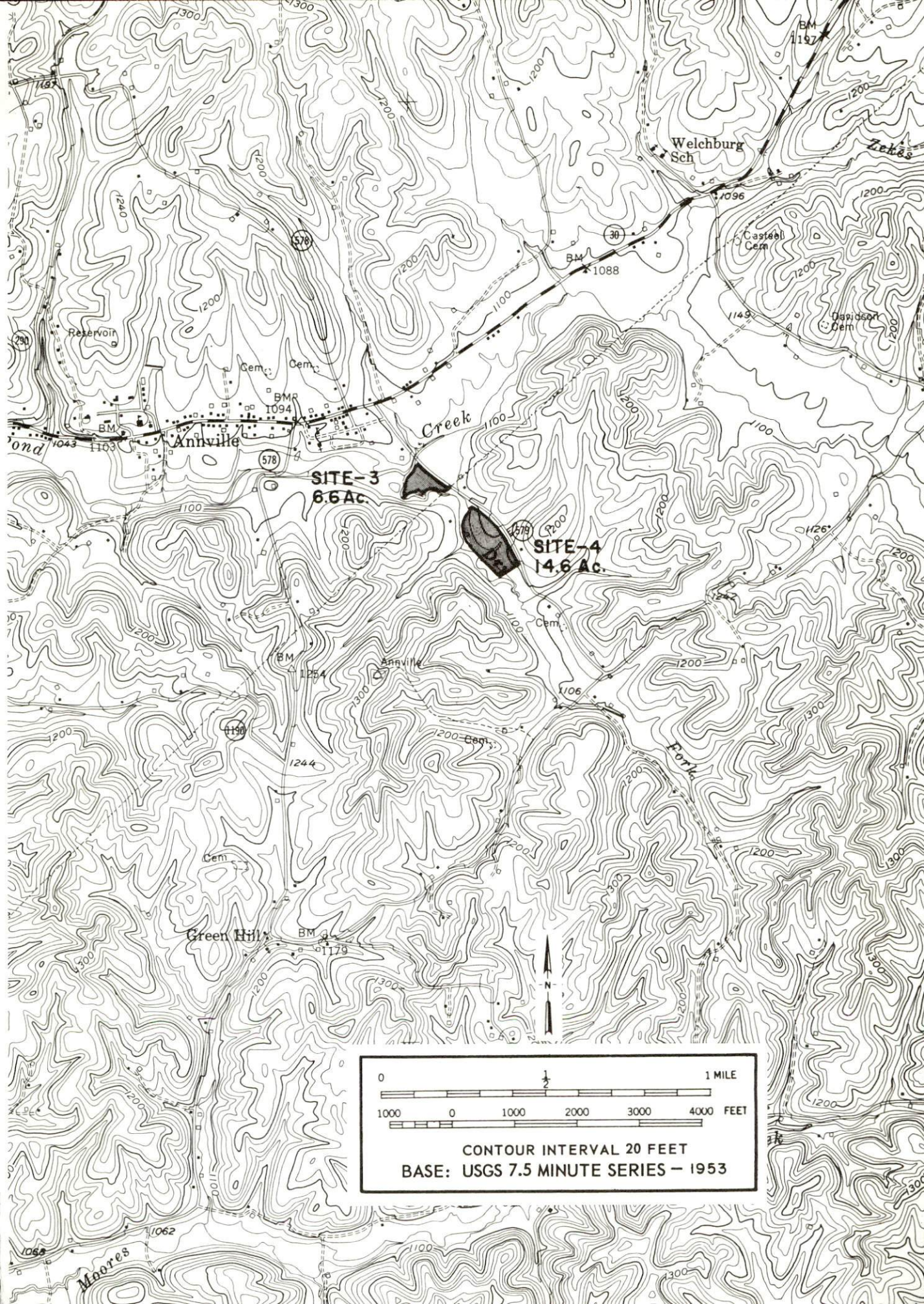
- SITE # 1: ACREAGE: 13.1 acres  
 LOCATION: Gray Hawk, Kentucky  
 ZONING: None  
 HIGHWAY ACCESS: Fronts on U. S. Highway 421  
 RAILROADS: Not rail served  
 WATER: Jackson County Water Association  
 SIZE LINE: 8-inch line to be constructed on the property.  
 GAS: Natural gas is presently not available  
 ELECTRICITY: Jackson County RECC  
 SEWERAGE: Not served by sewerage system  
 OPTIONED BY: Jackson County Industrial Foundation
- SITE # 2: ACREAGE: 7.84 acres  
 LOCATION: One-fourth mile northwest of Tyner  
 ZONING: None  
 HIGHWAY ACCESS: Fronts on U. S. Highway 421  
 RAILROADS: Not rail served  
 WATER: Jackson County Water Association  
 SIZE LINE: 8-inch line to be constructed on property.  
 GAS: Natural gas presently not available  
 ELECTRICITY: Jackson County RECC  
 SEWERAGE: Not served by sewerage system  
 OPTIONED BY: Jackson County Industrial Foundation
- SITE # 3: ACREAGE: 6.6 acres  
 LOCATION: One-fourth mile southeast of Annville  
 ZONING: None  
 HIGHWAY ACCESS: Fronts on Kentucky Route 579, one-fourth mile southeast of Kentucky Route 30.  
 RAILROADS: Not rail served  
 WATER: Jackson County Water Association  
 SIZE LINE: 8-inch line to be constructed on the property.  
 GAS: Natural gas is presently not available  
 ELECTRICITY: Jackson County RECC  
 SEWERAGE: Not served by sewerage system  
 OPTIONED BY: Jackson County Industrial Foundation
- SITE # 4: ACREAGE: 14.6 acres  
 LOCATION: Three-fifths mile southeast of Annville  
 ZONING: None  
 HIGHWAY ACCESS: Fronts on Kentucky Route 579, three-fifths mile southeast of Kentucky Route 30  
 RAILROADS: Not rail served  
 WATER: Jackson County Water Association  
 SIZE LINE: 8-inch line to be constructed on property  
 GAS: Natural gas is presently not available  
 ELECTRICITY: Jackson County RECC  
 SEWERAGE: Not served by sewerage system  
 OPTIONED BY: Jackson County Industrial Foundation
- SITE # 5: ACREAGE: 135 acres  
 LOCATION: Approximately one-fourth mile south of Sand Gap.  
 ZONING: None  
 HIGHWAY ACCESS: Fronts on U. S. Highway 421  
 RAILROADS: Not rail served  
 WATER: Jackson County Water Association  
 SIZE LINE: 8-inch line to be constructed on property.  
 GAS: Natural gas is presently not available  
 ELECTRICITY: Jackson County RECC  
 SEWERAGE: Not served by sewerage system  
 OPTIONED BY: Jackson County Industrial Foundation



**SITE-1**  
13.1 Ac.

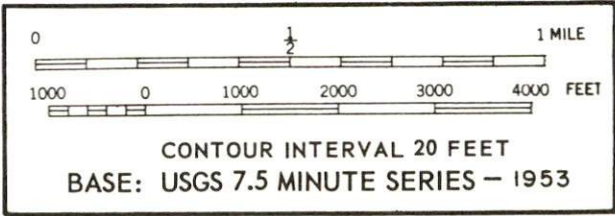
**SITE-2**  
7.84 Ac.

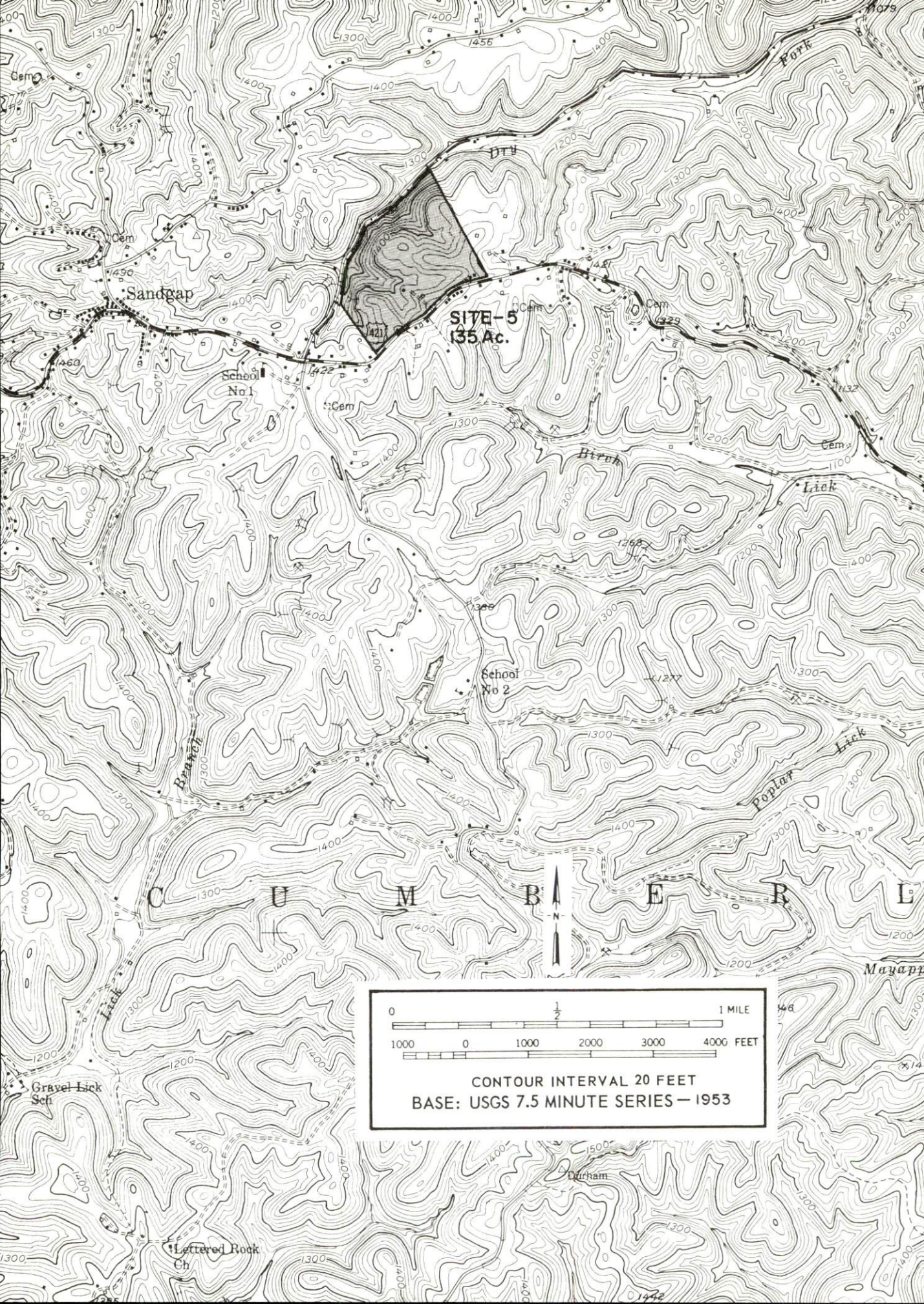




**SITE-3**  
**6.6 Ac.**

**SITE-4**  
**14.6 Ac.**





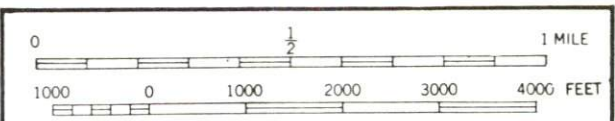
**SITE-5**  
**(35 Ac.)**

Sandgap

School  
No 1

School  
No 2

C U M B E R L



CONTOUR INTERVAL 20 FEET  
BASE: USGS 7.5 MINUTE SERIES — 1953

Lettered Rock  
Ch

Durham

Mayapp