

1970

Industrial Resources: LaRue County - Hodgenville

Kentucky Library Research Collections
Western Kentucky University, spcol@wku.edu

Follow this and additional works at: https://digitalcommons.wku.edu/larue_cty



Part of the [Business Administration, Management, and Operations Commons](#), [Growth and Development Commons](#), and the [Infrastructure Commons](#)

Recommended Citation

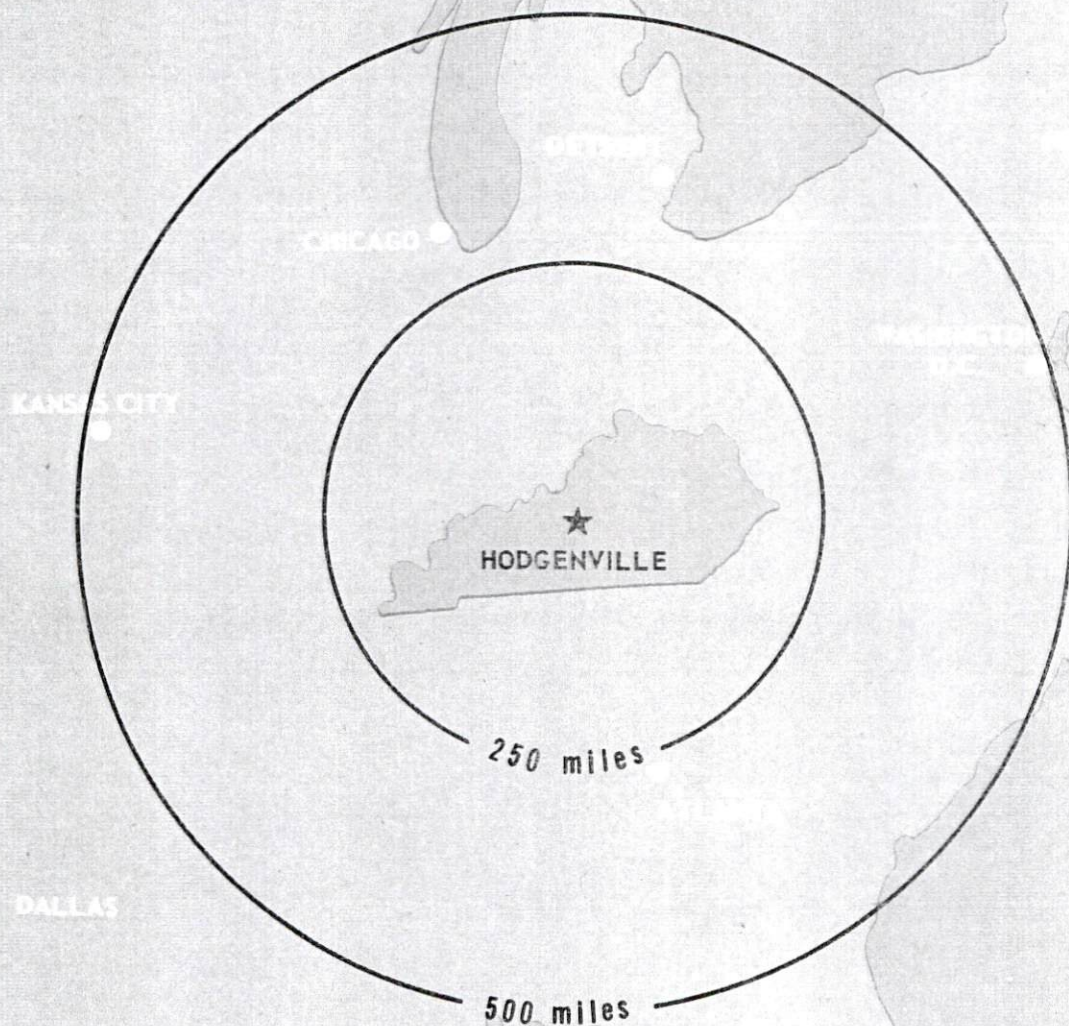
Kentucky Library Research Collections, "Industrial Resources: LaRue County - Hodgenville" (1970). *LaRue County*. Paper 11.
https://digitalcommons.wku.edu/larue_cty/11

This Report is brought to you for free and open access by TopSCHOLAR®. It has been accepted for inclusion in LaRue County by an authorized administrator of TopSCHOLAR®. For more information, please contact topscholar@wku.edu.

INDUSTRIAL RESOURCES

HODGENVILLE

KENTUCKY



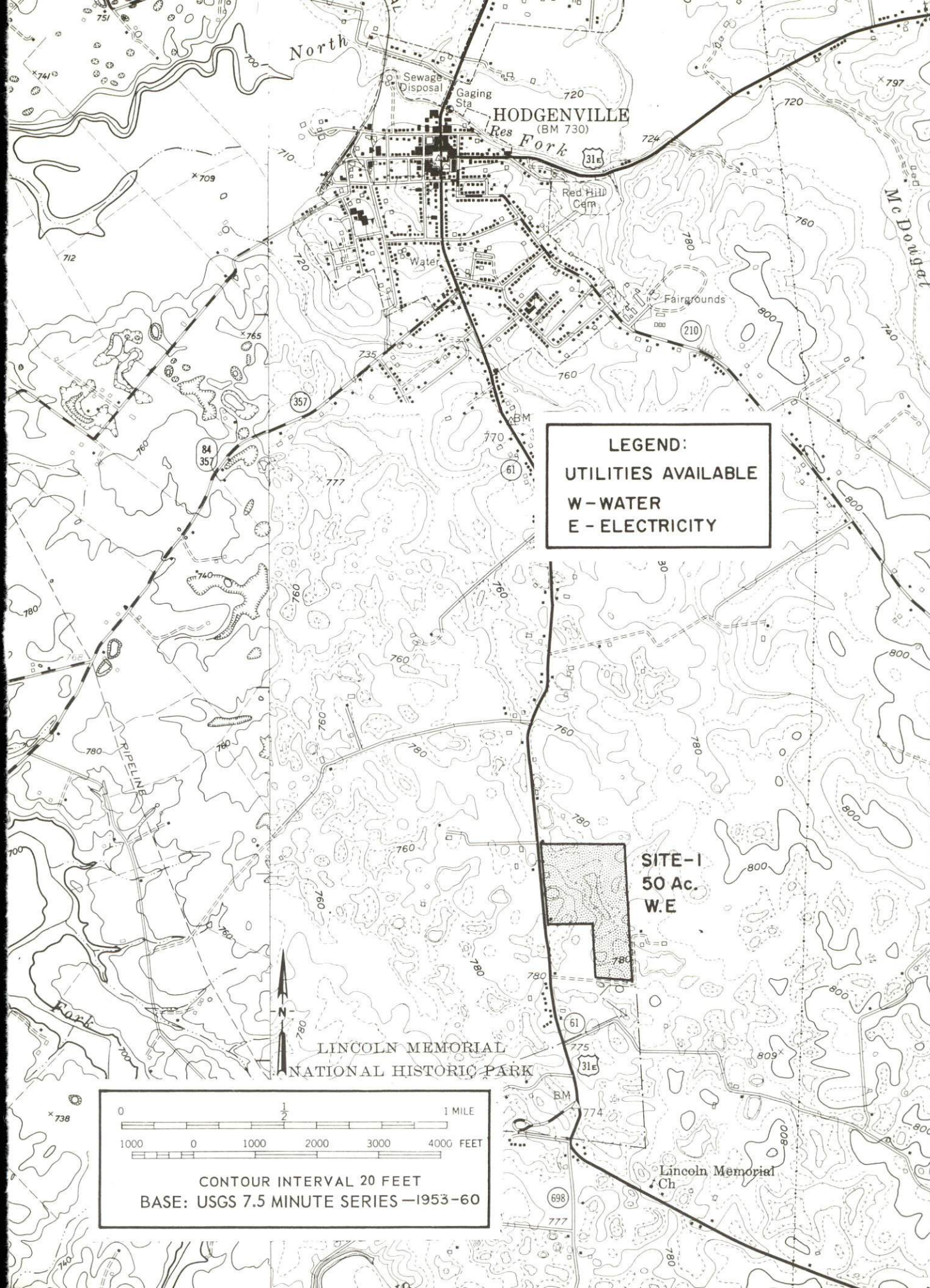
HODGENVILLE INDUSTRIAL SITE

1970

HODGENVILLE INDUSTRIAL SITE

For more detailed information concerning the following industrial site, contact Mr. Carl Howell, Hodgenville Chamber of Commerce, Hodgenville, Kentucky, or the Kentucky Department of Commerce, Frankfort, Kentucky.

SITE # 1: ACREAGE AND TOPOGRAPHY: 50 acres, level to rolling
 LOCATION: 1 mile south of city limits
 HIGHWAY: U. S. 31-E and Kentucky 61 run parallel to
 site
 WATER: Larue County Water District
 SIZE LINE: 6-inch
 GAS: Louisville Gas and Electric Company, gas main
 1 mile from site
 ELECTRICITY: Kentucky Utilities Company
 SEWERAGE: Municipal sewerage system will serve site
 OPTIONED BY: Hodgenville Chamber of Commerce



INDUSTRIAL RESOURCES
HODGENVILLE, KENTUCKY

Prepared by
The Kentucky Department of Commerce
in cooperation with
The Hodgenville Chamber of Commerce

1970

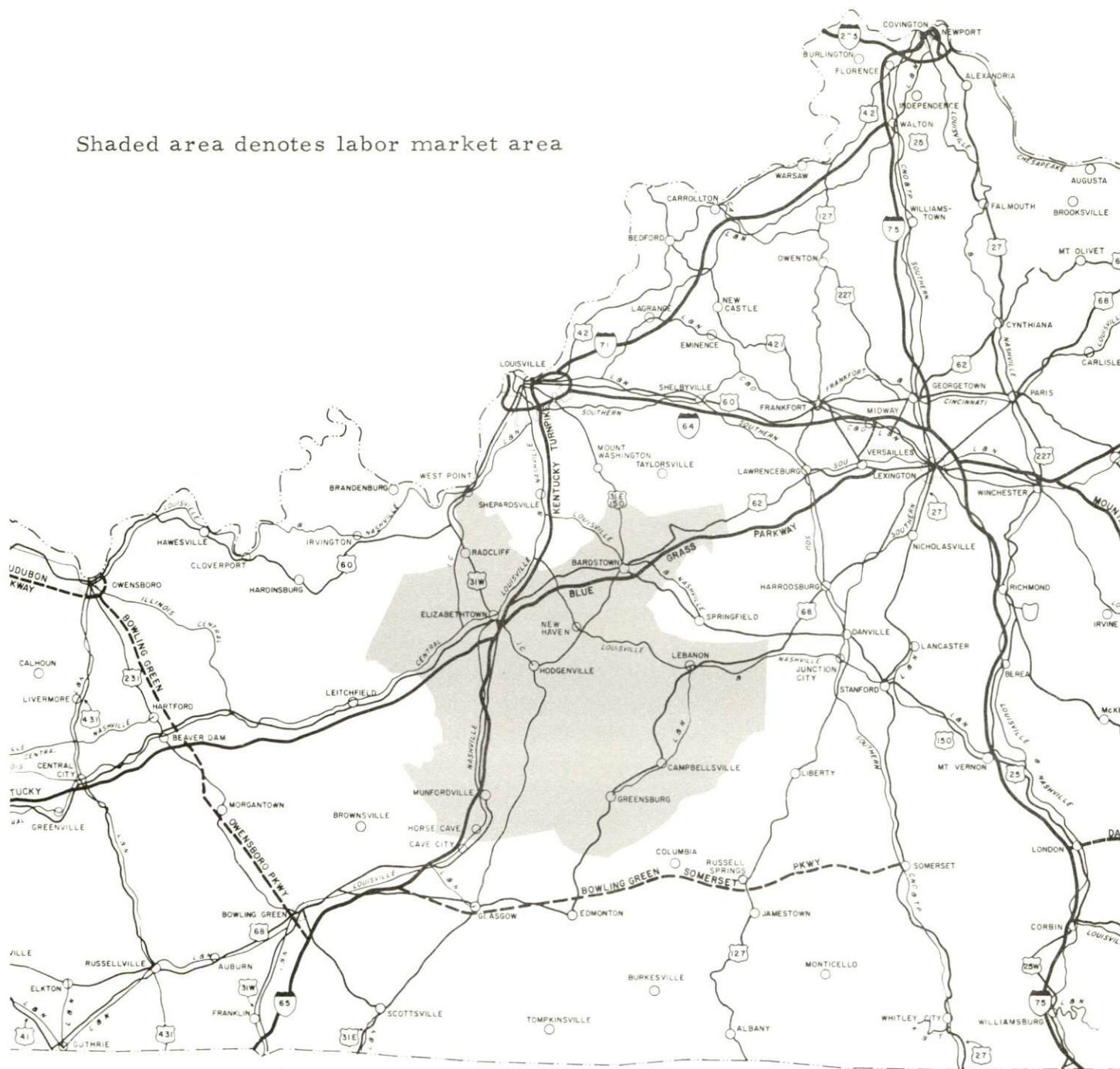
TABLE OF CONTENTS

<u>Chapter</u>	<u>Page</u>
INDUSTRIAL SITES	i
HODGENVILLE, KENTUCKY - A RESOURCE PROFILE . .	1
THE LABOR MARKET	4
Population Trends	4
General Employment Characteristics	4
Manufacturing Employment Trends by Industry.	4
Larue County Manufacturing Firms, Their Products and Employment	5
Wage Rates for Selected Occupations	5
Labor Organizations	6
Current and Future Labor Supply	6
Total Personal Income	6
Per Capita Personal Income	6
EDUCATION	7
Public Schools	7
Parochial Schools.	7
Vocational Schools	7
Colleges and Universities	8
TRANSPORTATION	9
Rail.	9
Truck Service	9
Air	10
Bus	10
Taxi.	10
POWER AND FUEL	11
Electricity	11
Natural Gas	11
WATER AND SEWERAGE	12
Water	12
Sewerage	12

<u>Chapter</u>	<u>Page</u>
LOCAL GOVERNMENT16
City.16
County16
Assessed Value of Property - 1969.16
Local General Property Tax Rates Per \$100 of Assessed	
Valuation - 196916
Planning and Zoning17
Safety17
Police17
Fire17
Sanitation17
HEALTH18
Hospitals18
Public Health18
OTHER LOCAL FACILITIES.19
Communications19
Library Services19
Religious Institutions19
Financial Institutions21
Hotels and Motels21
Clubs and Organizations.21
RECREATION22
Local22
Area22
AGRICULTURAL - NATURAL RESOURCES - CLIMATE24
Agriculture24
Natural Resources24
Climate24
HISTORY25

HODGENVILLE LABOR MARKET AREA

Shaded area denotes labor market area



HODGENVILLE, KENTUCKY - A RESOURCE PROFILE

Location

Hodgenville, the county seat of Larue County, dates back to 1780. It is recognized as the birthplace of Abraham Lincoln. The Lincoln Memorial, which houses the cabin where Lincoln was born, is located 2 miles south of Hodgenville. The 1960 population of Hodgenville was 1,985. The 1970 population of Larue County is estimated at 10,800.

Geographically, Hodgenville is located near the northeastern edge of Kentucky's Mississippian Plateaus Region, 50 miles south of Louisville and 132 miles north of Nashville, Tennessee.

The Economic Framework

Larue County is primarily a rural agricultural county. Total employment averaged 3,390 in 1968 with agriculture providing 1,020 of these jobs. Manufacturing provided 250 jobs, trade and services 400, and government 325.

Per capita income in the county in 1968 was \$2,020, an increase of \$949 since 1959.

Employment in the labor market area, which includes Larue and the six adjoining counties, totals 48,400, including 10,310 in agriculture. Manufacturing furnishes 8,950 jobs. Area industrial employment has increased 93 percent in the past 9 years with sharpest gains in apparel, machinery and metal products, and rubber products.

Despite important industrial gains in recent years the area still has a deficit of 7,099 manufacturing jobs when measured against the national industrial employment-population ratio. This indicates an area where the potential for additional manufacturing production is excellent.

Resources for Growth

1. There is a current estimated labor supply of 3,930 men and 3,290 women available for industrial jobs in the labor market area. In addition 8,730 young men and 8,535 women will become 18 years of age by 1976 and potentially available for work.

2. The local transportation capability is good. The Illinois Central Railroad serves Larue County with a variety of services. Hodgenville is located 10 miles from Elizabethtown, where the Western Kentucky Parkway, I-65 and the Blue Grass Parkway converge. These major highway arteries provide uninterrupted access to the industrial south, west and east. Commercial air service is available at Louisville, 50 miles distant.

3. Energy - both gas and electricity - is available in large quantity. The local water supply from Nolin River is more than adequate for continued growth.

4. Industrial sites - Hodgenville has a 50-acre site available for industrial use.

5. One university, three senior colleges, three community colleges, and two junior colleges are located within 60 miles of Hodgenville. The vocational extension center at Elizabethtown, 12 miles distant, offers training in six different courses.

Community Programs for Improvement

Recent community improvements: The Lincoln National Bank remodeled and new drive-in facilities added; a new nursing home; a 30-unit public housing project; a \$350,000 modernization and expansion of water and sewerage facilities; the \$200,000 Larue County Library; a new courthouse; and two classrooms, a library materials center and a bus garage at Larue Junior High School. A 70-unit public housing project is under construction.

Planned: A \$720,000 Urban Renewal project is in the process of review and approval in Washington; a watershed project, with a series of lakes for water storage and recreation, is being processed, with cost estimated at \$1,320,000; relocation of Kentucky Highway 61, between Hodgenville and Elizabethtown, is to be commenced in 1970; a new supermarket complex is to be built in 1970; renovation of the elementary center and improvement of facilities at the vocational school.

Recreation, Entertainment and Livability

Local recreational facilities include a swimming pool, tennis courts, playground equipment at local schools, lighted baseball and football fields for little league football and baseball, pony league baseball and high school baseball and softball.

Kentucky Kennel Club dog shows are held every Friday night during the summer months.

Lincoln Trail Ranch has facilities for horseback riding and is located 5 miles west of Hodgenville.

Abraham Lincoln Birthplace National Historic Site is located 3 miles south of Hodgenville and Nancy Lincoln Inn is located adjacent to the Site.

Lincoln's Knob Creek home is located 5 miles east of Hodgenville on U. S. Highway 31-E. Lincoln lived here for five years.

Lincoln Village Show Barn is located 3 miles south of Hodgenville, with country music every Saturday night.

Louisville, 50 miles distant, offers theater, concerts, ballet, art exhibits, horse racing and college sports.

THE LABOR MARKET

POPULATION TRENDS ^{1/}

	Population			Percent Change	
	1970 (Est.)	1960	1950	1960-70	1950-60
Hodgenville	--	1,985	1,695	--	+17.1
Labor Market Area	168,400	158,843	137,986	+ 6.0	+15.1
Larue County	10,800	10,346	9,956	+ 4.4	+ 3.9
Green County	10,500	11,249	11,261	- 6.7	- 0.1
Hardin County	80,200	67,789	50,312	+19.0	+34.7
Hart County	13,600	14,119	15,321	- 3.7	- 7.8
Marion County	15,800	16,887	17,212	- 6.4	- 1.9
Nelson County	21,200	22,168	19,521	- 4.4	+13.6
Taylor County	16,300	16,285	14,403	+ 0.1	+13.1

GENERAL EMPLOYMENT CHARACTERISTICS, 1968 ^{2/}

Major Employment Group	Larue County	Labor Market Area
TOTAL	3,389	48,402
Agricultural	1,019	10,310
Nonagricultural	2,370	38,092
Manufacturing	253	8,952
Trade and Services	409	9,414
Government	324	9,770
Other	1,384	9,956

MANUFACTURING EMPLOYMENT TRENDS BY INDUSTRY SEPTEMBER 1960 AND 1969 ^{3/}

Industry	Larue County			Labor Market Area		
	1969	1960	% Change	1969	1960	% Change
TOTAL	305	143	+113.3	9,573	4,962	+ 92.9
Food & kindred products	31	96	- 67.7	1,466	1,314	+ 11.6
Tobacco	0	0	--	11	14	- 21.4
Apparel, textiles, leather	229	0	--	4,627	2,442	+ 89.5
Lumber & furniture	29	40	- 27.5	512	502	+ 2.0
Printing, publishing, paper	4	5	- 20.0	354	97	+ 264.9
Chemicals, petroleum, coal, rubber	0	2	--	801	26	+2980.8
Stone, clay & glass	12	0	--	102	187	- 45.5
Primary metals	0	0	--	65	0	--
Machinery & metal products	0	0	--	1,323	190	+ 596.3
Other	0	0	--	312	190	+ 64.2

LARUE COUNTY MANUFACTURING FIRMS,
THEIR PRODUCTS AND EMPLOYMENT ^{4/}

Firm	Product	Employment		
		Total	Male	Female
Herald-News	Newspaper, job printing	5	4	1
Hodgenville Roller Mill	Flour, meal	5	4	1
Larue County Ready Mix, Inc.	Ready mixed concrete	6	6	0
Nationwide Uniform Corp.	Industrial uniforms	215	25	190
Raikes Lumber Co.	Lumber, barrel staves	16	16	0
Joseph E. Seagram & Sons, Inc.	Whiskey	73	72	1
Thompson Heading & Stave Mill, Inc.	Barrel staves, headings	10	10	0

WAGE RATES FOR SELECTED OCCUPATIONS
HODGENVILLE, KENTUCKY ^{5/}

Classification	Wages Per Hour
	Starting
<u>Production Employees</u>	
Assembler	\$1.80
Inspector	1.80
Production Laborer	1.80
Welder, Arc or Acetylene (Class-A)	1.80
<u>Service Employees</u>	
Electrician (Class-A)	\$3.00
Laborer	1.75
Machinist	5.00
Mechanic, Maintenance	2.20
Truck Driver, Industrial (Class-A)	1.75
<u>Office Employees</u>	
Bookkeeper	\$300 per month
File Clerk	250 per month
Receptionist	300 per month
Secretary	350 per month
Typist	300 per month

LABOR ORGANIZATIONS

<u>Union</u>	<u>Representing workers at:</u>
United Garment Workers of America	Nationwide Uniform Corp.
Distillery, Rectifying, Wine & Allied Workers International Union of America, AFL-CIO	Joseph E. Seagram & Sons, Inc.

CURRENT AND FUTURE LABOR SUPPLY - HODGENVILLE LABOR SUPPLY AREA

County	1970			Future Labor Supply by 1976		
	Current Labor Supply ^{6/}			(Becoming 18 Years of Age) ^{7/}		
	Total	Male	Female	Total	Male	Female
Labor Market Area	7,222	3,931	3,291	17,265	8,731	8,534
Larue	525	289	236	1,158	582	576
Green	682	435	247	1,143	588	555
Hardin	1,740	852	888	6,694	3,402	3,292
Hart	1,139	641	498	1,425	755	670
Marion	750	490	260	2,191	1,092	1,099
Nelson	1,688	828	860	3,009	1,487	1,522
Taylor	698	396	302	1,645	825	820

TOTAL PERSONAL INCOME ^{8/}

Area	1968	1959	% Change
Larue County	\$ 20,191,000	\$ 10,351,000	+ 95.1
Labor Market Area	536,124,000	247,004,000	+117.1
Kentucky	8,516,000,000	4,655,000,000	+ 82.9

PER CAPITA PERSONAL INCOME ^{9/}

Area	1968	1959	% Change
Larue County	\$2,020	\$1,071	+88.6
Labor Market Area	\$1,725 to 3,915	\$900 to 2,190	+91.7 to +78.8
Kentucky	2,645	1,552	+70.4

EDUCATION

Public Schools

	<u>Larue County</u>
Total Enrollment	2,548
Elementary	1,359
Junior High	427
High School	762
Student-Teacher Ratio	31-1
Elementary	23-1
Junior High	18-1
High School	38-1
State Rating of High Schools	1 Provisional, 1 Standard
Percent High School Graduates to College	29.8
Current Expenditures Per Pupil	\$437.40
Bonded Indebtedness, June 30, 1969	\$1,152,000

Parochial Schools

Total Enrollment	52
Elementary	52
Student-Teacher Ratio	17-1

Vocational Schools

	<u>Nearest Area School</u>
Location	Louisville
Miles Distant	50
Curriculum	Accounting Junior Management, Data Processing, Secretarial-Steno, Mechanics, Horticulture, Practical Nursing, Electronics (Communication), Air Conditioning and Refrigeration, Appliance Repair, Commercial Foods, Drafting, Heavy Equipment, Machine Shop, Office Machine Repair, Printing, Radio & TV Repair, Tool and Die Making, Tool and Die Design, Auto Body Repair

Vocational Schools (Contd.)

	<u>Nearest Extension Center</u>
Location	Elizabethtown
Miles Distant	12
Curriculum	Appliance Repair, Auto Mechanics, Carpentry, Drafting, Electricity, Welding

Colleges and Universities

<u>Name</u>	<u>Area - Within 60 Miles</u>		<u>Highest Degree Conferred</u>
	<u>Location</u>	<u>Enrollment</u>	
Elizabethtown Community College	Elizabethtown	630	Associate
Fort Knox Community College	Fort Knox	408	Associate
Lindsey Wilson College	Columbia	574	Associate
Campbellsville College	Campbellsville	882	Baccalaureate
St. Catharine Academy	St. Catharine	156	Associate
Jefferson Community College	Louisville	2,179	Associate
Bellarmino-Ursuline College	Louisville	1,875	Baccalaureate
Spalding College	Louisville	1,622	Masters
University of Louisville	Louisville	9,057	Ph. D., D.M.D., M.D., J.D.

TRANSPORTATION

Rail

Line serving - Illionis Central Railroad

Services - Freight, siding, REA Express

RAILWAY TRANSIT TIME FROM HODGENVILLE, KENTUCKY, TO: ^{10/}

No. of Days		No. of Days	
City	CL	City	CL
Atlanta, Ga.	3	Los Angeles, Calif.	6
Birmingham, Ala.	2	Louisville, Ky.	1
Chicago, Ill.	2	Nashville, Tenn.	2
Cincinnati, Ohio	2	New Orleans, La.	3
Cleveland, Ohio	2	New York, N. Y.	4
Detroit, Mich.	3	Pittsburgh, Pa.	4
Knoxville, Tenn.	3	St. Louis, Mo.	3

Truck Service

<u>Company</u>	<u>Home Office</u>
Crutcher Transfer Line, Inc.	Louisville, Kentucky
Dixie Highway Express, Inc.	St. Paul, Minnesota
Dixie Ohio Express, Inc.	Louisville, Kentucky
Manning Motor Express, Inc.	Akron, Ohio
McLean Trucking Co.	Winston-Salem, North Carolina
Southern Forwarding Co.	Memphis, Tennessee
United Parcel Service	Louisville, Kentucky

HIGHWAY MILES AND TRUCK TRANSIT TIME IN DAYS FROM HODGENVILLE, KENTUCKY, TO SELECTED MARKET CENTERS

Delivery				Delivery			
Highway		Time ^{11/}		Highway		Time	
City	Miles	LTL	TL	City	Miles	LTL	TL
Atlanta, Ga.	355	3	2	Los Angeles, Calif.	2,156	7-10	3-5
Birmingham, Ala.	351	3	2	Louisville, Ky.	50	1-2	1
Chicago, Ill.	353	3	2	Nashville, Tenn.	132	3	2
Cincinnati, Ohio	160	3	2	New Orleans, La.	762	5	2-3
Cleveland, Ohio	403	3	2	New York, N. Y.	798	5-7	3-5
Detroit, Mich.	414	3	2	Pittsburgh, Pa.	433	3	2
Knoxville, Tenn.	260	3	2	St. Louis, Mo.	319	3	2

Air

Nearest Commercial

Standiford Field

Location: Louisville, Kentucky, 50 miles distant

Runways: 3 paved

Length: 7,800 ft., 7,250 ft., 5,000 ft.

Traffic

Control: Control tower, approach control, ground control, guards, radar service-departure control

Lighting: Runways, obstructions, beacon and approach lights, center line on runways

Services: 80, 100, 115 octane, jet fuel; storage; major A&E repairs; TWA, American, Eastern, Delta, Piedmont, Ozark, Allegheny, and Northern Airlines; rent-a-car service; restaurant; taxi; city bus service; Weather Bureau

Bus - Southern Greyhound Bus Line

Taxi - Service during daylight hours

POWER AND FUEL

Electricity

Company serving Hodgenville - Kentucky Utilities Company

Source of power - Kentucky Utilities Company

Total generating capacity - 740,000 KW

Industrial rates negotiated by - Kentucky Utilities Company,
Industrial Development Division, Lexington, Kentucky

Company serving Larue County - Nolin RECC

Source of power - East Kentucky Power Cooperative

Total generating capacity - 515,000 KW

Industrial rates negotiated by - East Kentucky Power Cooperative,
Winchester, Kentucky

Natural Gas

Company serving - The Louisville Gas and Electric Company

Source of supply - Texas Gas Transmission Corporation

Size of transmission lines - 26-inch

Distribution lines - 2, 4, and 8 inches

BTU content - 1000; Specific gravity - 0.6

Distribution pressure - 2 to 35 psi

Industrial rates may be obtained from The Louisville Gas and
Electric Company, Louisville, Kentucky

WATER AND SEWERAGE

Water

Company serving Hodgenville - Hodgenville Water Works
Source - North Fork of Nolin River
Treatment plant capacity - 500,000 gpd
Average daily consumption - 200,000 gallons
Peak daily consumption - 465,000 gallons
Type treatment - Coagulated, settled, filtered, chlorinated, fluoridated
Storage capacity - 500,000 gallons
Average pressure - 45 psi
Average temperature - 50° F.
Size mains - 8 and 6 inches

MONTHLY WATER RATES FOR WHOLESALE AND INDUSTRIAL CONSUMERS

First	3,000 gallons	\$4.00 Minimum bill
Next	7,000 gallons	1.10 per 1,000 gallons
Next	10,000 gallons	.90 per 1,000 gallons
Next	20,000 gallons	.70 per 1,000 gallons
Next	40,000 gallons	.50 per 1,000 gallons

Surface water sources - North Fork of Nolin River
Average discharge - About 45 cfs (USGS)
Expected ground water yield - Northeast one-quarter - 5 gpm or less,
central section - 50 to 200 gpm, balance - 5 to 50 gpm
Yield along main streams - 50 to 200 gpm

Sewerage

Company serving Hodgenville - Hodgenville Sewage Treatment Plant
Design capacity - 200,000 gpd
Average daily flow - Treating at capacity
Treatment - Primary
Type treatment - Settling, trickling filter, clarifier
Treated effluent discharged into - North Fork of Nolin River
Size of sanitary mains - 8 to 15 inches
Size of storm mains - 12 and 15 inches
Rates - One-half of water bill

LOCAL GOVERNMENT

City

Structure - Mayor - 4-year term; 6 councilmen - 2-year terms

Fees and licenses - Occupational licenses range from \$20 to \$300 annually

County

Structure - County judge - 4-year term; 4 magistrates - 4-year terms

Budget 1969-70 - General Fund \$100,450; Road Fund \$44,434

Assessed Value of Property, 1969*

<u>Classes of Property</u>	<u>Hodgenville</u>	<u>Larue County</u>
Real Estate	\$8,826,700	\$43,947,127
Tangibles	1,914,846	8,663,599
Public Service	937,344	7,553,163

Local General Property Tax Rates Per \$100 of Assessed Valuation, 1969^{12/}

<u>Taxing Unit**</u>	<u>Hodgenville</u>	<u>Larue County</u>
State	\$.015	\$.015
County	.180	.180
School	.578	.578
City	.220	
Total	\$.993	\$.773

Planning and Zoning

Agency - Hodgenville Planning & Zoning Commission

Plans completed - Comprehensive Plan, Zoning Ordinance, Subdivision Regulations, Codes Advisory Service

Plans in process - Housing Element Study, Public Improvement Program, Capital Improvements Budget

Codes - All major codes enforced

Other programs - Certified Workable Program, Public Housing, Urban Renewal

*Property assessed at 100 percent of fair value.

**Manufacturing machinery, raw materials inventories and goods in process inventories are not subject to local tax. State rate is only \$.15 per \$100.

SafetyPoliceHodgenvilleLarue County

Total staff
Radio-patrol cars
Other equipment

6
2
radar

4
4

Fire

American Insurance
Association Fire Rating
Volunteers
Equipment:
750 gpm pumpers
500 gpm pumpers

7
18
1
1

8

1

SanitationHodgenvilleLarue County

Type service
Cost
residential
business
Collection frequency
residential
business
Trash pickup
Disposal method

private
\$2 monthly
private
weekly
weekly
weekly
land fill

private
contract
-
when desired
-
when desired
land fill

HEALTH

Hospital

<u>Nearest General Hospital</u>	<u>Location</u>	<u>Beds</u>
Hardin Memorial Hospital	Elizabethtown, 10 miles	159
General hospital facilities - 5 operating rooms, laboratory, radiology, diagnostic rooms, pharmacy, delivery room, nursery, premature nursery, recovery room		
Medical staff - 29 doctors, 55 registered nurses, 26 graduate licensed practical nurses, 85 licensed practical nurses		

Nursing Homes

	<u>Number</u>	<u>Beds</u>
Extended care home	1	80
Personal care home	1	51

Public Health

Facility - Larue County Health Department

Staff - 2 nurses, 1 health officer, 1 sanitarian, 1 clerk

Budget 1969-70 - \$35,800

OTHER LOCAL FACILITIES

Communications

Telephone - General Telephone Company
Services - Standard

Postal - U. S. Post Office
Class - Second
Mail received - twice daily
Mail dispatched - twice daily

Newspapers - The Herald News
Weekly and circulation - 3,100
Other papers received from - Louisville and Elizabethtown, Kentucky

Radio -
Stations received from Louisville, Elizabethtown and Bardstown,
Kentucky, and Cincinnati, Ohio

Television -
Cable service
Reception from - Louisville, Lexington and Bowling Green, Kentucky,
and Nashville, Tennessee
Kentucky Educational Television - Elizabethtown, Channel 23

Library Services

Public library - Lincoln Memorial Public Library
Size collection - 16,174 volumes
Circulation, 1969 - 19,916
Services - Story hour, films, paintings, magazines, bookmobile,
conference room

Religious Institutions

Number of churches - 8
Denominations - Baptist, Catholic, Christian, Church of Christ, Church
of God, Methodist, Pentecostal, Cumberland Presbyterian

Financial Institutions

<u>Bank</u>	<u>Statement as of December 31, 1969</u>	
	<u>Assets</u>	<u>Deposits</u>
Lincoln National Bank	\$9,210,253.30	\$7,941,986.76
<u>Savings and Loan Associations</u>	<u>Assets</u>	<u>Share Accounts</u>
Larue Federal Savings & Loan Association	\$4,725,371.79	\$4,344,619.42

Hotels and Motels

<u>Number</u>	<u>Units</u>
4	53

Clubs and Organizations

Business and Civic - Chamber of Commerce, Jaycees, Rotary, Lions

Fraternal - Masonic, American Legion, VFW

Women's - Woman's Club, Ladies Lincoln Club, Junior Woman's Club

Youth - Boy Scouts, Little League, Girl Scouts, 4-H Club, FFA

Other - Farm Bureau, Game & Fish Club, PTA, Larue County Saddle Club

RECREATION

Local

Public Recreation Facilities

- Playgrounds - 4
- Swimming pool - 1
- Tennis courts - 4
- Baseball diamonds - 2
- Football fields - 2
- Other - Teen Club

Private Recreation Facilities

- Country club - 1
- Golf course - 1

Tourist Attractions

- Abraham Lincoln Birthplace National Historical Site, Lincoln's Knob
- Creek Home, Lincoln Village Show Barn, Lincoln Trail Ranch

Area (Within 50 miles)

- Mammoth Cave National Park
- My Old Kentucky Home
- Stephen Foster Drama - Bardstown
- Patton Museum - Fort Knox
- Rough River State Park
- Nolin Reservoir
- Churchill Downs - home of the Kentucky Derby
- Kentucky State Fair and Exposition Center - world championship horse shows, NCAA basketball finals, State high school basketball tournament, University of Louisville basketball games, ice shows, circus and other major events held here throughout the year.

AGRICULTURE - NATURAL RESOURCES - CLIMATE

Agriculture ^{13/}

	<u>Larue County</u>	<u>Labor Market Area</u>
Total land area (acres)	166,400	1,694,080
Percent of area in farm land	79.0	82.1
Number of farms	1,155	11,107
Average size of farms (acres)	113.9	121.1
1964 value of all farm products	\$5,290,760	\$52,873,451
Value per farm	\$ 4,581	\$ 4,823
Total crop sales	\$2,152,560	\$26,075,829
Total livestock & livestock products	\$3,137,726	\$26,695,337
1967 agricultural production included:		
Burley tobacco (lbs.)	2,277,000	28,724,000
Corn (bu.)	1,001,000	8,283,000
Cattle and calves (number)	32,000	263,300
Hogs and pigs (number)	18,500	136,200
Milk production, 1966 (lbs.)	32,760,000	339,775,000

Natural Resources

Principal mineral resources	limestone as used in general construction
Other mineral resources	natural gas in small quantities, some clay
Acres of commercial forest land	55,300
Most abundant tree species	white oak, red oak, hickory, yellow poplar, beech, hard maple, ash

Climate ^{14/}

	<u>Larue County</u>
Temperature	
Annual mean (30-year record)	55.6°
Average annual, 1968	54.1°
Record highest (5-year record)	98.0°
Record lowest (5-year record)	-10.0°
Seasonal heating degree-days (30-year record)	4,683
Precipitation	
Mean annual total (30-year record)	44.73 inches
Mean annual snow and sleet (24-year record)	16.00 inches
Total precipitation, 1968	43.32 inches
Mean number days precipitation, .01 inch or more (24-year record)	128
Average number days thunderstorms (24-year record)	48
Prevailing winds (17-year record)	south

HISTORY

Larue County, the ninety-eighth county formed in Kentucky, dates from 1843. Its territory was taken from Hardin County. It contains 260 square miles, and is generally rolling to hilly. Rolling Fork of Salt River flows along its eastern boundary. This stream flows around Muldrow's Hill, famous for having been the western extent of surveyed lands in Kentucky before Edmund Rogers penetrated the region in 1784.

Several mounds which contained human bones, beads of ivory, and sea shells were found about five miles from Hodgenville. The site of an ancient town or fortification was located nearby which contained the image of a bird, cut of rock, with some holes drilled through it. A rock wall several feet high extended across a meadow which lies inside a horseshoe-shaped, two-hundred-foot high cliff that follows a bend in the river. No invading army could possibly scale the cliff, and the rock wall made the area into a formidable fortress.

The first settlement in Larue County was made by Phillip Phillips, a Pennsylvania surveyor, and Benjamin Lynn in 1780. Its site was about 1 mile above Hodgenville on Nolin Creek. Soon other settlers arrived and the surrounding area blossomed with cleared patches and cornfields. Among them were Thomas Howell and Stephen Ferrel.

Larue County was named for John Larue, a Virginian who brought a number of settlers with him to Phillips' Fort. He purchased the place. His brother-in-law, Robert Hodgen, bought the land on which Hodgenville now stands. In 1788 the latter obtained permission from the Nelson County Court to erect a mill and an inn.

Some 2 miles south of Hodgenville, on the Old Sinking Spring Farm, is the Abraham Lincoln National Historic Site which is the birthplace of Abraham Lincoln. The Lincoln Memorial, an austere square structure, stands on a hillside facing a narrow plaza. A long flight of steps, thirty feet wide, leads down into the open area. The Memorial was designed by John Russell Pope and consists of Connecticut granite and Tennessee marble. Six Doric columns stand across the front, while similar ones frame openings on each side. A phrase from Lincoln's Gettysburg Address: "With malice toward none, with charity for all," is carved over the entrance.

The cabin in which Lincoln was born stands in the center of the Memorial. It is slightly smaller than in its original form, but consists of the original materials. It has only one window, and the doorway is so low that a man of average height must stoop when entering. This cabin was

moved from place to place for exhibition purposes -- to the Tennessee Centennial Exposition at Nashville in 1896, to New York City's Central Park, and to the Pan-American Exposition in Buffalo in 1901. Until 1904 it was stored in the basement of the Poffenhausen Mansion at College Point on Long Island. Robert Collier, the publisher, paved the way for its return to Hodgenville. On February 12, 1902, President Theodore Roosevelt laid the cornerstone of the Memorial, and President William Howard Taft dedicated the building on November 9, 1911. On September 14, 1916, President Woodrow Wilson witnessed the transfer of the Memorial and park to the United States War Department. The property was turned over to the Department of the Interior in 1933.

Hodgenville, the county seat, was named for Robert Hodgen who first owned the townsite. He served as sheriff and as a member of the State Legislature before Larue County was organized. He was host to Prince Louis Phillipe of France in 1797, and later General Lafayette visited the town.

SOURCES OF INFORMATION

- 1/ U. S. Department of Commerce, Bureau of the Census, Census of Population, 1950, 1960. Department of Rural Sociology, University of Kentucky, Kentucky County Provisional Population Estimates: January 1, 1970.
- 2/ Kentucky Department of Economic Security, Division of Research and Statistics.
- 3/ Kentucky Department of Economic Security, Number of Workers in Manufacturing Industries Covered by Unemployment Insurance Law Classified by Industry and County, September 1960, September 1969.
- 4/ Kentucky Department of Commerce, 1970 Kentucky Directory of Manufacturers.
- 5/ Kentucky Department of Economic Security, Division of Employment Service, Elizabethtown Office.
- 6/ Kentucky Department of Economic Security, Kentucky Labor Supply Estimates by County, January 1970.
- 7/ Kentucky Department of Commerce, Future Labor Supply by 1976.
- 8/ University of Kentucky, Office of Development Services and Business Research, Total Personal Income for Kentucky.
- 9/ University of Kentucky, Office of Development Services and Business Research, Per Capita Income in Kentucky.
- 10/ Illinois Central Railroad, Louisville, Kentucky.
- 11/ Crutcher Transfer Line, Inc., Louisville, Kentucky.
- 12/ Kentucky Department of Revenue, Kentucky Property Tax Rates, 1969.
- 13/ U. S. Department of Commerce, Bureau of the Census, 1964 Census of Agriculture. U. S. Department of Agriculture and Kentucky Department of Agriculture, Kentucky Agricultural Statistics, 1968.
- 14/ U. S. Department of Commerce, Environmental Science Services Administration, Climatological Data, 1967.

All other information was obtained from governmental offices, local businesses and organizations.