

1974

Industrial Resources: Owsley County - Booneville

Kentucky Library Research Collections
Western Kentucky University, spcol@wku.edu

Follow this and additional works at: https://digitalcommons.wku.edu/owsley_cty



Part of the [Business Administration, Management, and Operations Commons](#), [Growth and Development Commons](#), and the [Infrastructure Commons](#)

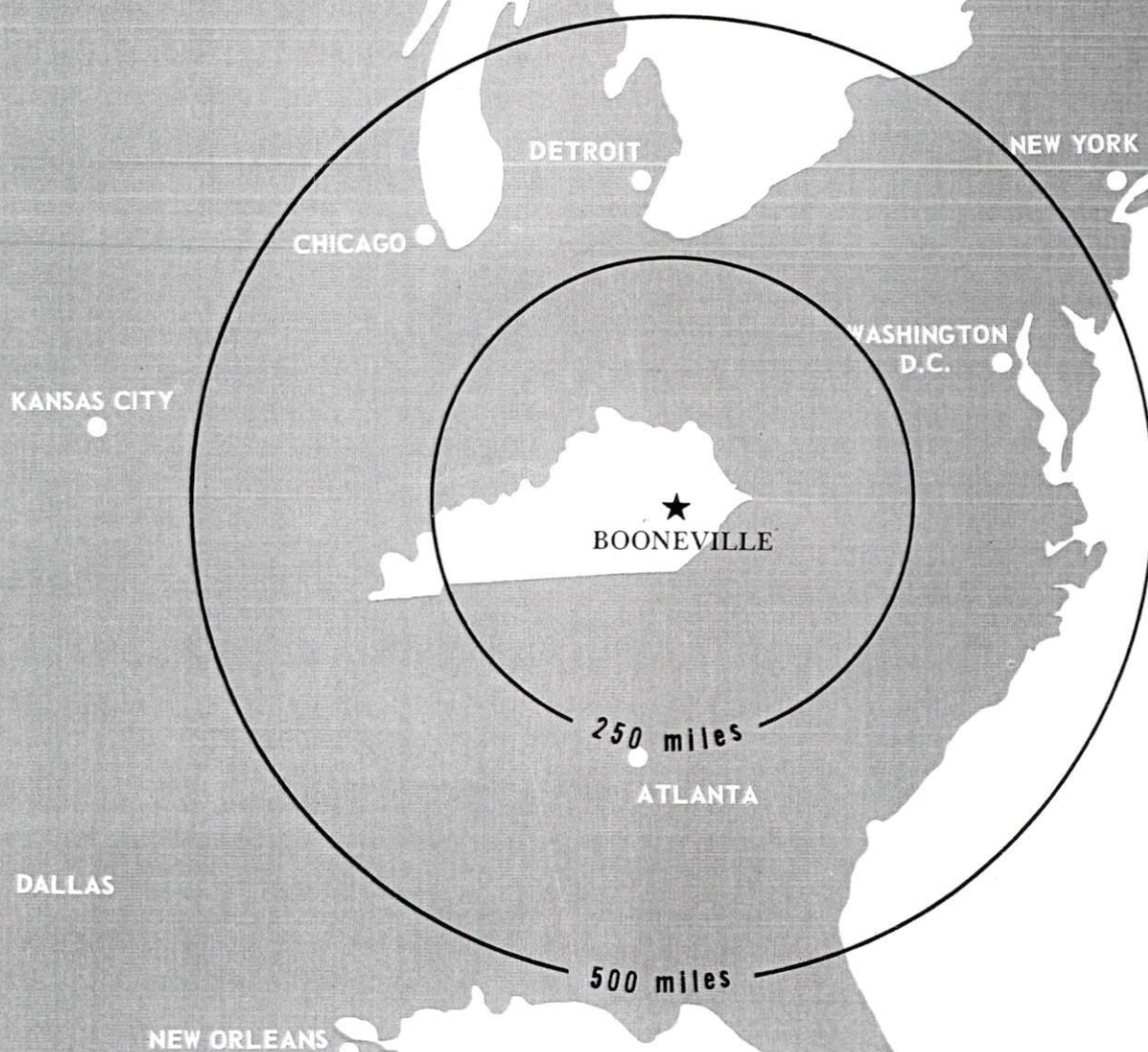
Recommended Citation

Kentucky Library Research Collections, "Industrial Resources: Owsley County - Booneville" (1974). *Owsley County*. Paper 18.
https://digitalcommons.wku.edu/owsley_cty/18

This Report is brought to you for free and open access by TopSCHOLAR®. It has been accepted for inclusion in Owsley County by an authorized administrator of TopSCHOLAR®. For more information, please contact topscholar@wku.edu.

INDUSTRIAL RESOURCES

BOONEVILLE KENTUCKY



OWSLEY COUNTY, KENTUCKY

BOONEVILLE INDUSTRIAL SITE

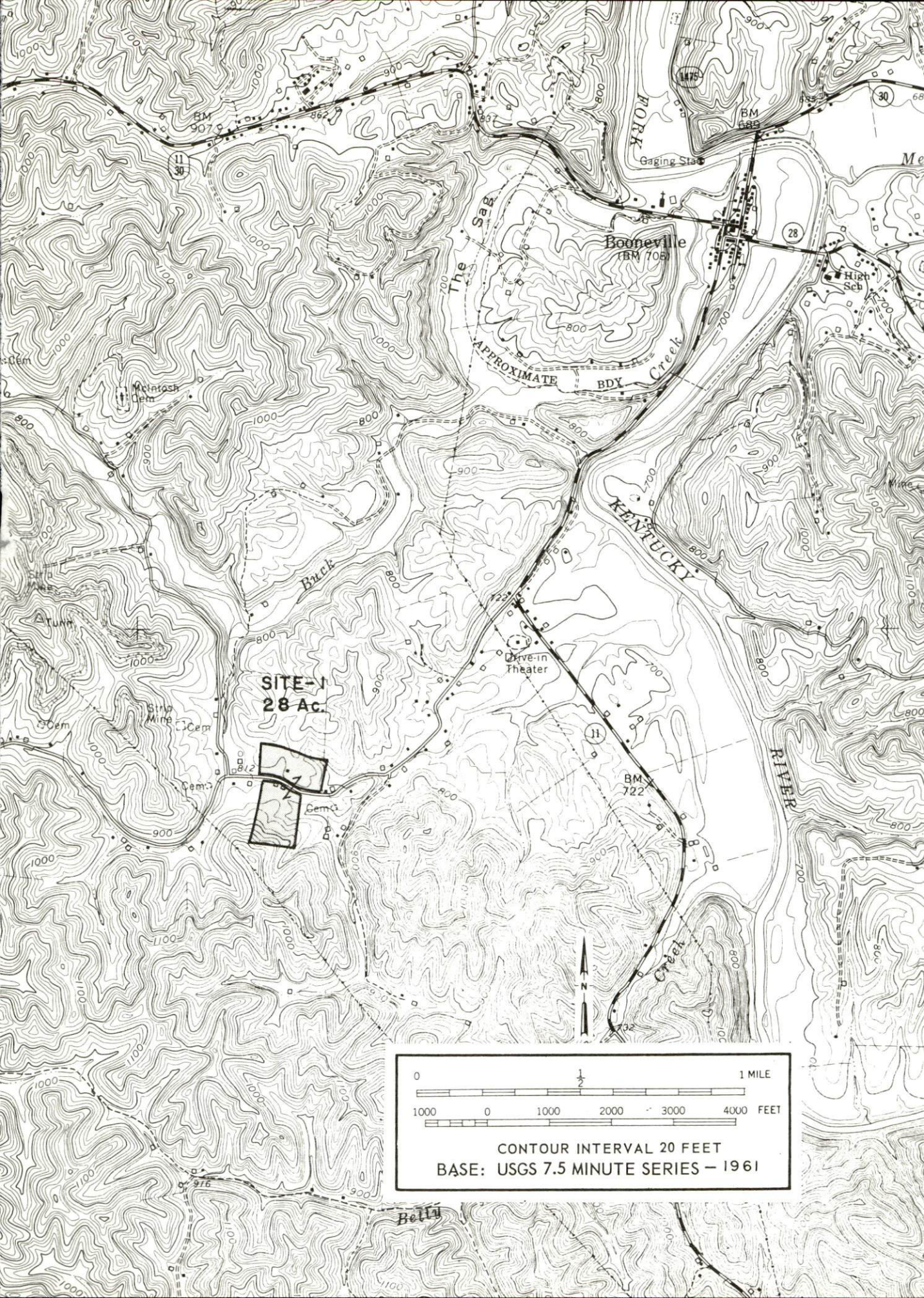
1974

BOONEVILLE INDUSTRIAL SITE

1974

For more information about the following sites, contact Mr. E. L. Hughes, Booneville, Kentucky; or the Kentucky Department of Commerce, Capital Plaza Office Tower, Frankfort, Kentucky.

SITE #1: ACREAGE: 28 acres
LOCATION: Approximately 2 1/2 miles southwest
of city limits
ZONING: Not zoned
HIGHWAY ACCESS: Paved county road passes
through center of site
RAILROAD: Not rail served
WATER: Booneville Water and Sewer District
SIZE LINE: 6-inch line extends onto
center of site
GAS: Natural gas service not available
ELECTRICITY: Jackson County RECC
SEWERAGE: Sewer not available; 2,500-foot
disposal line necessary for package treatment
plant
OPTIONED BY: Owsley County Planning Commission



INDUSTRIAL RESOURCES
BOONEVILLE, KENTUCKY

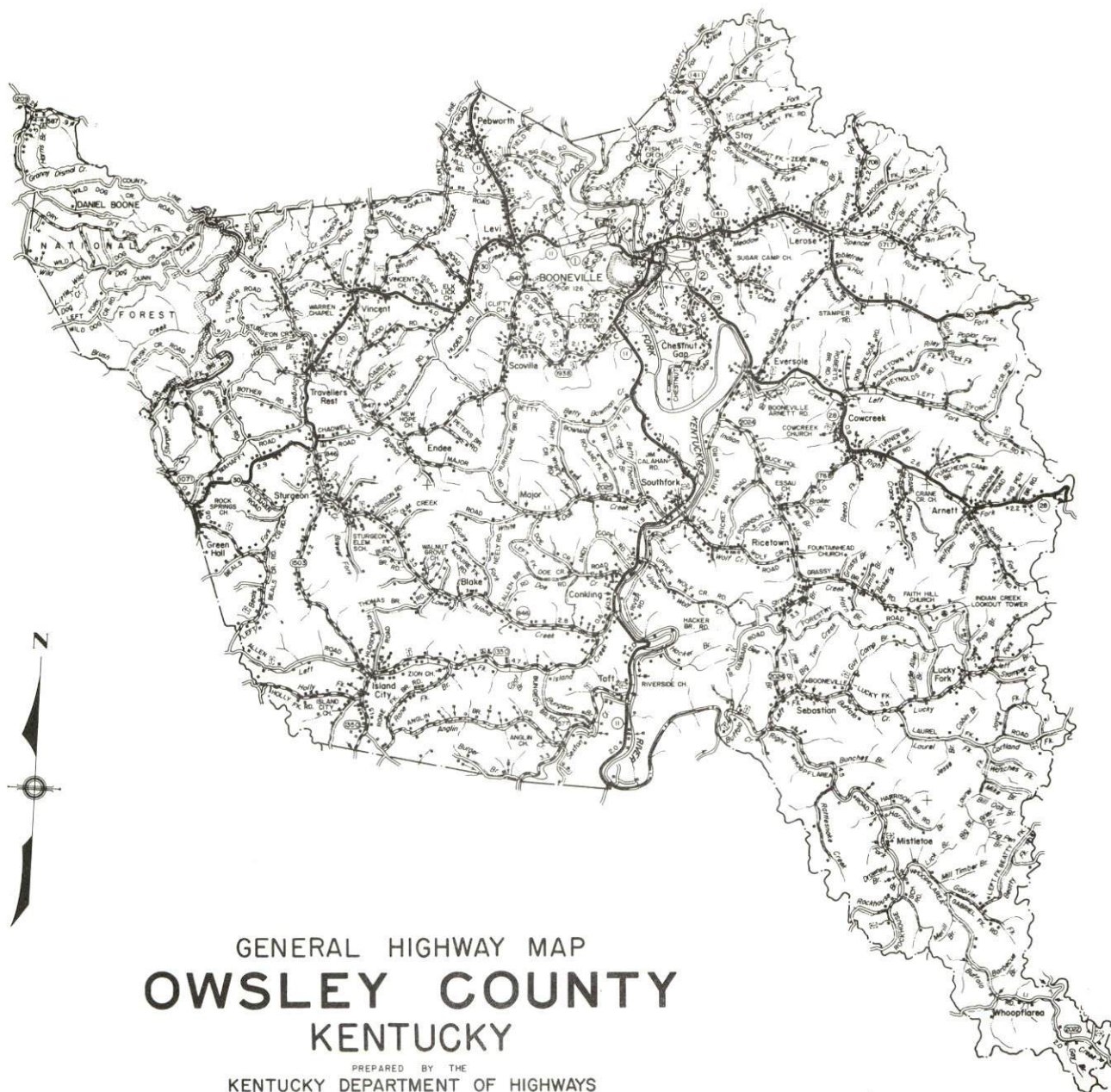
Prepared by
The Kentucky Department of Commerce
in cooperation with
The City of Booneville

1974

TABLE OF CONTENTS

<u>Chapter</u>	<u>Page</u>
INDUSTRIAL SITES.	i
BOONEVILLE, KENTUCKY - A RESOURCE PROFILE	1
THE LABOR MARKET	4
Population Trends	4
General Employment Characteristics, 1972.	4
Manufacturing Employment Trends by Industry	5
Manufacturing Firms.	5
Wages	6
Estimated Male Labor Supply	7
Estimated Female Labor Supply	7
Per Capita Personal Income	7
TRANSPORTATION.	8
Rail	8
Truck Service	8
Air.	9
Bus	9
Rental Services	9
POWER AND FUEL	10
Electricity	10
Natural Gas	10
Other Fuels	10
WATER AND SEWERAGE	11
Water.	11
Sewerage	11
LOCAL GOVERNMENT	12
City	12
County	12
Assessed Value of Property, 1973	12
Property Taxes	12

<u>Chapter</u>	<u>Page</u>
Local Property Tax Rate Per \$100 of Assessed Valuation, 1973	13
Safety	13
Police	13
Fire	13
Ambulance Service	13
Sanitation	13
EDUCATION	14
Public Schools	14
Vocational Schools	14
Colleges and Universities	15
HEALTH	16
Hospitals	16
Public Health	17
OTHER LOCAL FACILITIES.	18
Communications	18
Library Services.	18
Religious Institutions.	18
Financial Institutions.	19
Hotels and Motels	19
Clubs and Organizations	19
RECREATION	20
Local.	20
Area	20
AGRICULTURE - NATURAL RESOURCES - CLIMATE	21
Agriculture	21
Natural Resources	21
Climate.	22
HISTORY	23

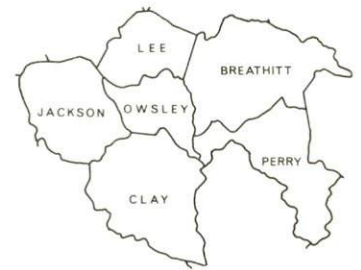


GENERAL HIGHWAY MAP **OWSLEY COUNTY** KENTUCKY

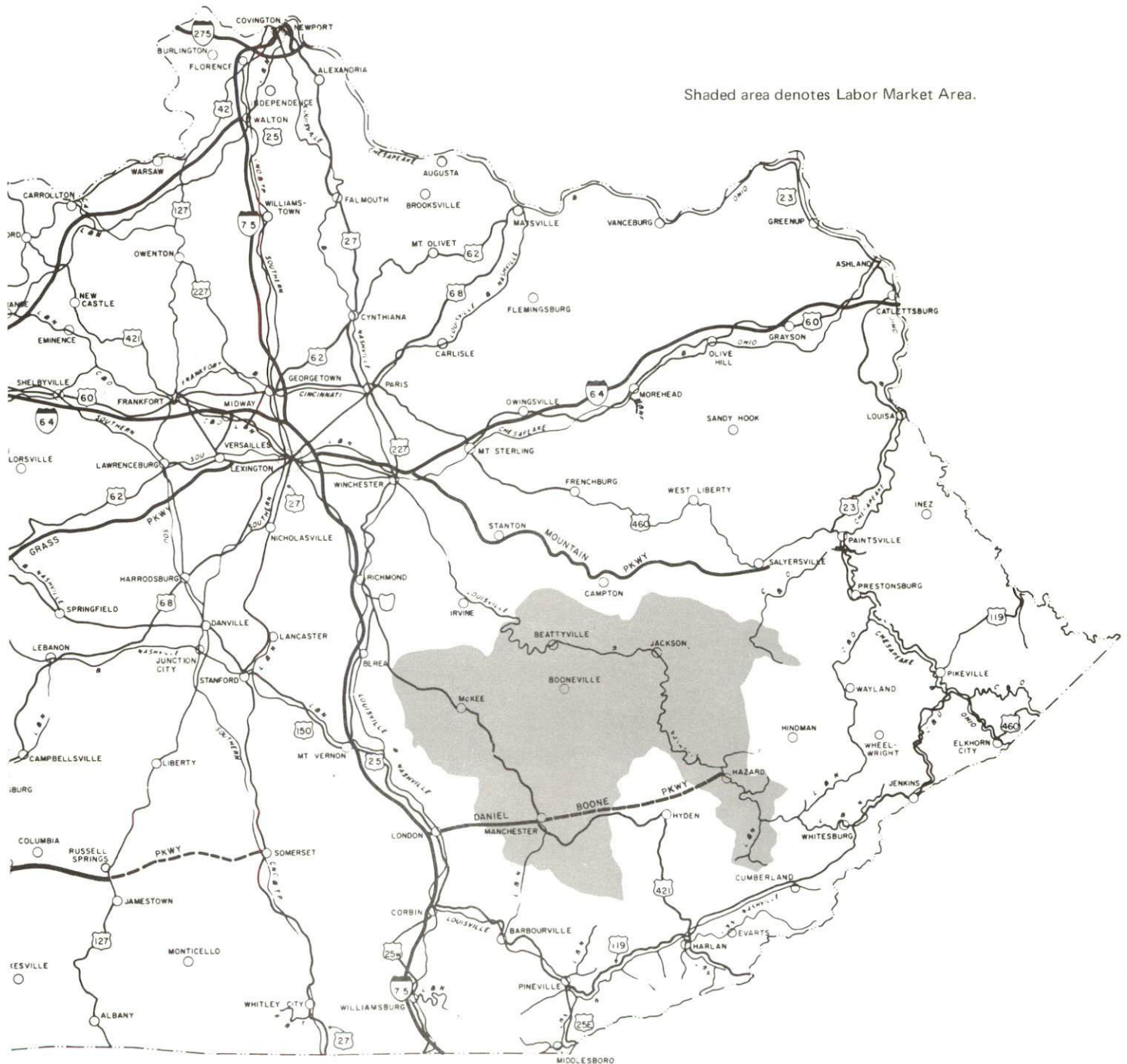
PREPARED BY THE
 KENTUCKY DEPARTMENT OF HIGHWAYS
 DIVISION OF PLANNING
 IN COOPERATION WITH THE
 U.S. DEPARTMENT OF TRANSPORTATION
 FEDERAL HIGHWAY ADMINISTRATION



BOONEVILLE LABOR MARKET AREA



Shaded area denotes Labor Market Area.



BOONEVILLE, KENTUCKY - A RESOURCE PROFILE

Booneville, the county seat of Owsley County, is located in the Eastern Mountain Region of Kentucky, 87 miles southeast of Lexington, 154 miles southeast of Louisville, 165 miles south of Cincinnati, and 130 miles southwest of the Ashland-Huntington area. Booneville's location in the mountains of Eastern Kentucky provides it with vast opportunities to become a recreation center.

Booneville had a 1970 population of 126 and Owsley County had a population of 5,023. Owsley County, primarily a rural area, covers an area of 197 square miles.

The Economic Framework

Total employment in Owsley County averaged 880 in 1972 with agriculture supplying 350 of these jobs, and government 220. At present there are no manufacturing firms located in Owsley County.

Per capita personal income in the county in 1971 was \$1,238. Per capita personal income has increased 104 percent since 1961.

Booneville is the center of a labor market area that includes Owsley and the five adjoining counties. Area employment totaled 18,930 in 1972, including 2,200 jobs in agriculture, 3,600 in trade and services, 4,300 in government, and 700 in manufacturing. Area industrial employment has increased by approximately 43 percent since 1963 with the sharpest gains in the furniture and leather products industries.

The area has a deficit of 6,627 manufacturing jobs when measured against the national industrial employment-population ratio. This indicates an area where the potential for additional manufacturing production is excellent.

Resources for Growth

1. There is a current labor supply of 7,930 men and 6,330 women available for industrial jobs in the labor market area. In addition, 5,025 young men and 4,790 young women will become 18 years of age by 1979 and potentially available for work.

2. The Oaks Truck Line provides trucking service from Booneville to Lexington, where connections can be made for interstate or intrastate service. The Mountain Parkway, located only 31 miles north of Booneville, provides quick access to Interstate 64, a major link to the east and west. I-64 intersects with Interstate 75 in Lexington, which is a major highway artery to the north and south. The nearest rail service is provided by the Louisville & Nashville Railroad at Beattyville, 11 miles distant. Commercial air service is available at the London-Corbin Magee Field Airport in London, Kentucky, 57 miles south of Booneville.

3. Energy - The Jackson County Rural Electric Cooperative Corporation supplies the county with electrical power and receives its power from the East Kentucky Power Cooperative. Five fuel oil distributors and one propane distributor serve Booneville and Owsley County. The local raw water supply from the Kentucky River is more than adequate for continued growth.

4. Booneville has one available industrial site consisting of 28 acres. Water and electricity are available at the site.

5. Education - Booneville and Owsley County operate under one consolidated school system. One university, one senior college, two junior colleges, and one community college are located within 60 miles of Booneville.

The nearest area vocational education center is located in Beattyville, 11 miles distant, and offers six courses. The nearest state vocational-technical school is located in Hazard, 43 miles distant, and offers 18 courses.

Community Programs for Improvement

The new Owsley County High School was completed and is now being used. A gymnasium is being planned as an addition to the present classroom structure.

Federal funds in the amount of \$245,000 have been allocated for the planning and design of the Booneville Reservoir. It has been estimated that the lake will cover 3,680 acres. The lake will be used for recreation, flood control and water storage. A definite construction date has not been set.

A new Owsley County Courthouse will be ready to open after the beginning of 1974. The fireproof building will house all county offices and officials.

With money Booneville has attained through revenue sharing, it has put a new roof on the county jail and has built three bridges and repaired two more. The fire department has also improved their building facilities and added to their equipment.

The city has applied for a grant to assist in extending the water and sewer lines. They hope to have this accomplished by mid-1974.

Recreation, Entertainment and Livability

Booneville's location near the edge of the Daniel Boone National Forest in Eastern Kentucky provides many good possibilities for recreational activities.

Natural Bridge State Resort Park is only 31 miles north of Booneville. It features many different natural sandstone formations. Also provided are lodge, cottage, and tent and trailer camping facilities. Other nearby scenic areas which offer varied land and water activities are Buckhorn Lake State Resort Park and Levi Jackson Wilderness Road State Park.

The Red River Canoe Race is an annual event occurring usually in May. This race begins near Natural Bridge State Resort Park and ends near Stanton. This attraction draws many tourists to the area.

THE LABOR MARKET

POPULATION TRENDS

Area	Population				Percent Change	
	1972*	1970	1960	1950	1960-70	1950-60
Booneville	N. A.	126	143	165	-11.9	-13.3
Labor Market Area	83,100	80,576	94,665	118,810	-14.9	-20.3
Owsley County	5,200	5,023	5,369	7,324	- 6.4	-26.7
Breathitt County	14,500	14,221	15,490	19,964	- 8.2	-22.4
Clay County	19,400	18,481	20,748	23,116	-10.9	-10.2
Jackson County	10,100	10,005	10,677	13,101	- 6.3	-18.5
Lee County	6,810	6,587	7,420	8,739	-11.2	-15.1
Perry County	27,100	26,259	34,961	46,566	-26.4	-24.9

*Provisional Estimates.

Sources: U. S. Department of Commerce, Bureau of the Census, Census of Population, 1970, 1960, 1950. U. S. Bureau of the Census, Current Population Reports, Series P-26, June 1973.

GENERAL EMPLOYMENT CHARACTERISTICS, 1972

Major Employment Group	Employment	
	Owsley County	Labor Market Area
TOTAL	880	18,930
Agricultural	350	2,190
Nonagricultural	530	16,740
Manufacturing	0	705
Government	220	4,300
Trade and Services	61	3,613
Other	249	8,122

Source: Kentucky Department of Economic Security, Division of Research and Statistics.

MANUFACTURING EMPLOYMENT TRENDS BY INDUSTRY
MARCH 1973 AND 1963

Industry	Owsley County			Labor Market Area		
	1973	1963	% Change	1973	1963	% Change
TOTAL	0	0	0	752	525	+ 43.2
Food & Kindred Products	0	0	0	63	95	- 33.7
Apparel, Textiles, Leather	0	0	0	169	0	0
Lumber, Furniture	0	0	0	472	378	+ 24.9
Printing & Publishing, Paper	0	0	0	28	11	+154.5
Other	0	0	0	20	41	- 51.2

Source: Kentucky Department of Economic Security, Number of Workers in Manufacturing Industries Covered by Kentucky Unemployment Insurance Law Classified by Industry and County, March 1973, March 1963.

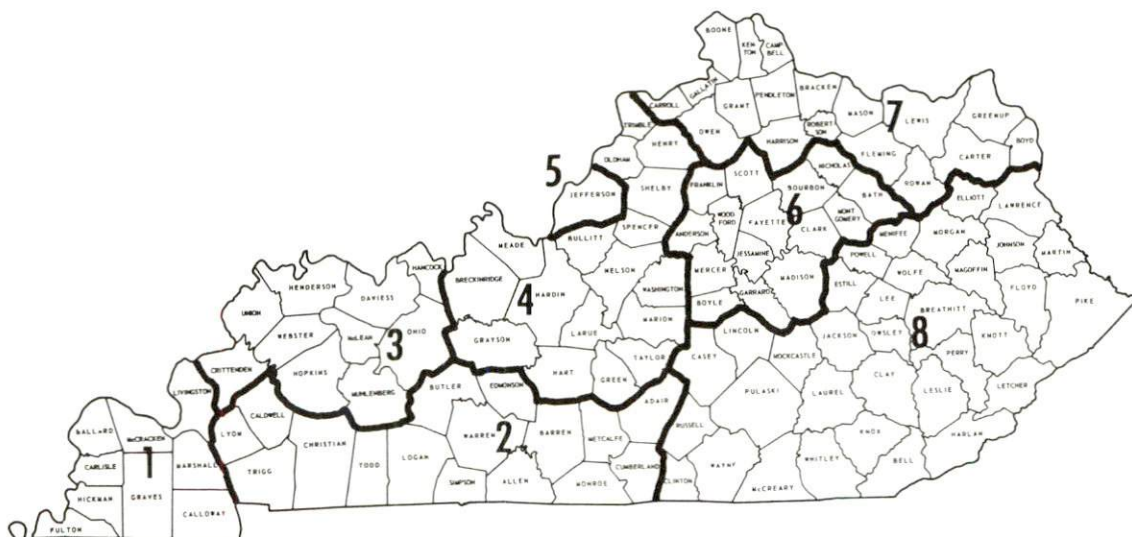
MANUFACTURING FIRMS

At the present time, there are no manufacturing plants located in Booneville or Owsley County.

WAGES

Occupational wage rates for specific industries are usually not available to most government agencies, and wage data furnished to state employment agencies by industrial employers is protected from disclosure by federal law. The most reliable up-to-date wage information can be obtained by direct contact with local employers.

Associated Industries of Kentucky, a voluntary organization of Kentucky businesses, regularly collects occupational wage rates and fringe benefits data from participating member firms. Data is compiled for over 130 clearly defined office, production, and service occupations. Tabulations are published for eight regions of Kentucky, as shown on the map below. It should be noted that the data may be weighted by the preponderance of firms in the larger cities and may be somewhat higher than the rates paid in the smaller communities. Data from these tabulations are available, upon request, from the Kentucky Department of Commerce, Frankfort, Kentucky 40601.



Associated Industries of Kentucky Area Wage Surveys

ESTIMATED MALE LABOR SUPPLY
BOONEVILLE LABOR MARKET AREA

Area	Current				Future
	Total	Not in Labor Force	Unemployed	Under- employed	Reaching 18 Yrs. of Age by 1979
Labor Market					
Area	7, 930	5, 060	1, 680	1, 190	5, 025
Owsley	680	470	130	80	298
Breathitt	1, 400	850	270	280	941
Clay	2, 210	1, 500	400	310	1, 191
Jackson	1, 110	690	290	130	570
Lee	600	390	80	130	396
Perry	1, 930	1, 160	510	260	1, 629

Sources: Kentucky Department of Economic Security, Kentucky Labor Supply Estimated by County, 1973. Kentucky Department of Commerce, Future Labor Supply by 1979.

ESTIMATED FEMALE LABOR SUPPLY
BOONEVILLE LABOR MARKET AREA

Area	Current				Future
	Total	Not in Labor Force	Unemployed	Under- employed	Reaching 18 Yrs. of Age by 1979
Labor Market					
Area	6, 330	4, 950	520	860	4, 791
Owsley	630	570	30	30	269
Breathitt	1, 130	850	100	180	921
Clay	1, 290	1, 070	70	150	1, 188
Jackson	940	700	100	140	555
Lee	510	400	20	90	395
Perry	1, 830	1, 360	200	270	1, 463

Sources: Kentucky Department of Economic Security, Kentucky Labor Supply Estimates by County, 1973. Kentucky Department of Commerce, Future Labor Supply by 1979.

PER CAPITA PERSONAL INCOME

Area	1971	1961	% Change
Owsley County	\$1, 238	\$ 607	+104. 0
Labor Market Area Range	\$2, 345 to 1, 238	\$1, 058 to 552	N. A.
Kentucky	3, 310	1, 677	+ 97. 3
U. S.	4, 164	2, 265	+ 83. 8

Sources: University of Kentucky, Office of Development Services and Business Research, Per Capita Income in Kentucky. U. S. Department of Commerce, Bureau of Economic Analysis, Survey of Current Business, August, 1973.

TRANSPORTATION

Rail

Line serving Booneville - Nearest rail service, provided by the Louisville & Nashville Railroad, is located at Beattyville, 11 miles from Booneville.

Services - The number of freights vary each day, the least number being one northbound and one southbound. Siding space is available.

For details on routing, schedules, rates, and services, contact:

Manager of Industrial Development
Louisville & Nashville Railroad Company
908 West Broadway
Louisville, Kentucky 40203

Truck Service

Company

Home Office

Oaks Truck Line

Beattyville, Kentucky 41311

Other Freight Services

Nearest Shipping Center

United Parcel Service*

Clay City, Kentucky, 48 miles distant

*For regular scheduled pickups or for occasional pickups, arrangements must be made with the Louisville office of U. P. S.

HIGHWAY MILES AND TRUCK TRANSIT TIME IN DAYS FROM BOONEVILLE, KENTUCKY, TO SELECTED MARKET CENTERS

City	Highway Miles	Delivery		City	Highway Miles	Delivery	
		Time TL				Time TL	
Atlanta, Ga.	347	3		Los Angeles, Calif.	2,261	5	
Birmingham, Ala.	410	3		Louisville, Ky.	154	2	
Chicago, Ill.	459	3		Nashville, Tenn.	296	2	
Cincinnati, Ohio	165	2		New Orleans, La.	838	4	
Cleveland, Ohio	409	3		New York, N. Y.	807	4	
Detroit, Mich.	434	3		Pittsburgh, Pa.	447	3	
Knoxville, Tenn.	157	2		St. Louis, Mo.	431	3	

Source: Delivery Time Only - Oaks Truck Line, Beattyville, Kentucky 41311

Air

	<u>Nearest Local</u>	<u>Nearest Commercial</u>
Location:	Hazard Airport Hazard, 38 miles distant	London-Corbin Magee Field Airport London, 57 miles distant
Runways:	1 paved	1 paved
Length:	2,300 feet	6,000 feet
Traffic		
Control:	Wind sock	Wind sock
Lighting:	None	Beacon, runway and obstruction lights
Services:	80 and 100 octane, 6 days - daylight hours	80 and 100 octane, JP-A-50, Piedmont Airlines, taxi, weather, flight training, charter and ambulance service, vending machines
Air Freight Service:		On space available basis

Bus

Southern Greyhound Bus Lines at Jackson, Kentucky, 24 miles distant.

Rental Services

Car, truck and trailer rentals are available at Berea, Kentucky, 58 miles distant.

POWER AND FUEL

Electricity

Company serving Booneville and Owsley County - Jackson County Rural
Electric Cooperative Corporation
Source of power - East Kentucky Power Cooperative
Total generating capacity - 548,000 KW
For industrial rates contact:

Jackson County RECC
McKee, Kentucky 40447

Natural Gas

Booneville does not have natural gas service.

Other Fuels

Propane and butane - Ideal Bottle Gas, Inc., Beattyville, Kentucky

Fuel oils

Distillate fuel oil - Cole Oil Company, Inc., McKee, Kentucky; Gulf
Oil Products, Rogers Oil Company, Tank Service, Inc., Standing
Rock Oil Corp., all in Beattyville, Kentucky

Residual fuel oil - arrangements must be made with the refinery

Low sulphur content coal - available locally in Eastern Kentucky

WATER AND SEWERAGE

Water

Company serving Booneville - Booneville Water and Sewer District
Source - South Fork of Kentucky River
Treatment plant capacity - 368,640 gpd
Average daily consumption - 46,000 gallons
Peak daily consumption - 54,000 gallons
Type treatment - Lime, chlorine, fluoride, potassium, alum
Storage capacity - 336,000 gallons
Size lines - 8, 6, and 3 inches
Average pressure - 85 psi
Average temperature - 56° F.

MONTHLY WATER RATES FOR WHOLESALE AND INDUSTRIAL CONSUMERS

First	2,000 gallons	\$2.50 per 1,000 gallons (\$5.00 Minimum)
Next	18,000 gallons	1.20 per 1,000 gallons
Next	20,000 gallons	1.00 per 1,000 gallons
Next	30,000 gallons	.70 per 1,000 gallons
Next	30,000 gallons	.60 per 1,000 gallons
All Over	100,000 gallons	.50 per 1,000 gallons

Tap-on Charge - \$70.00

Surface water sources - South Fork of Kentucky River
Average discharge - South Fork Kentucky River at Booneville 1,004 cfs
(USGS, 38-year record)
Expected ground water yield - 5-50 gpm entire county

Sewerage

Company serving Booneville - Booneville Water and Sewer District
Design capacity - 100,000 gpd
Average daily flow - 40,000 gallons
Treatment - Secondary
Type treatment - Aeration and clarifier
Treated effluent discharged into - South Fork of Kentucky River
Size of sanitary mains - 8 inches
Rates - 50 percent of monthly water bill; Tap-on charge - \$60

LOCAL GOVERNMENT

City

Structure - 5-member Board of Trustees - 2-year terms

Budget 1972-73 - General Fund - \$ 6,998.03

Water and Sewer Fund - 35,919.00

Fees and licenses - \$10 to \$20 annual license fee for business

County

Structure - County Judge - 4-year term; 3 magistrates - 4-year terms

Budget 1973-74 - General Fund - \$33,829

Road Fund - 41,200

Assessed Value of Property, 1973

<u>Classes of Property</u>	<u>Booneville</u>	<u>Owsley County</u>
Real Estate		\$8,559,100
Tangibles		2,418,760
Public Service	\$944,000	2,154,189

Property Taxes

Land and buildings are taxed by the state and may be taxed by local jurisdictions. The state rate is \$0.015 per \$100 of assessed valuation.

Tangible personal property owned by manufacturers (automobiles, trucks, finished goods, office furniture, office equipment) is taxed by the state at \$0.15 per \$100 and may be taxed by local jurisdictions.

Manufacturing machinery, raw materials inventories, and goods in process inventories are not subject to local taxation. The state rate is \$0.15 per \$100.

Property stored in public warehouses is not subject to local taxation. The state rate is only \$0.015 per \$100.

All property is assessed at 100 percent of fair cash value.

Local Property Tax Rate Per \$100 of Assessed Valuation, 1973*

<u>Taxing Jurisdiction</u>	<u>Booneville</u>	<u>Owsley County</u>
County	\$.358	\$.358
School	.477	.477
City	None	

Safety

<u>Police</u>	<u>Booneville</u>	<u>Owsley County</u>
Total staff	**	4
Radio-patrol cars		1
Other equipment		standard

Fire

Volunteers	5
Equipment:	
500 gpm pumper	1
275 gpm pumper	1

Ambulance Service

Buckhorn Lake Emergency Ambulance Service

Full-time staff - 7

Equipment - 3 fully-equipped ambulances on 24-hour service; all radio-equipped and licensed by the state.

Personnel training - Advanced first aid; all men certified by the state and one nationally certified

Sanitation

	<u>Booneville</u>
Type service	Private
Fee charged:	
residential	\$3 per month
business	\$6 per month
Collection frequency:	
residential	3 times weekly
business	3 times weekly
Disposal method	Landfill

*Kentucky Department of Revenue, Kentucky Property Tax Rates, 1973.

**A committee has been formed to hire a policeman, with employment to begin no later than January, 1974.

EDUCATION

Public Schools

	<u>Owsley County</u>
Total Enrollment (Fall 1973)	1,158
Elementary	669
High School	489
Student-Teacher Ratio	20 - 1
Elementary	22 - 1
High School	20 - 1
Percent High School Graduates to College	37.5
Expenditures Per Pupil (1971-72)	\$444.05
Bonded Indebtedness, June 30, 1972	\$538,000

Vocational Schools

	<u>Nearest State School</u>	<u>Nearest Area Education Center</u>
	Hazard State Vocational- Technical School	Lee County Area Vocational Education Center
Location	Hazard	Beattyville
Miles Distant	43	11
Curriculum	Clerical Secretarial Practical Nursing Learning Lab Electronics (Industrial) Highway Technology Auto Body Repair Carpentry Commercial Foods Cosmetology Diesel Mechanics Drafting Electricity Heavy Equipment Machine Shop Mine Maintenance Welding Auto Mechanics	Clerical Secretarial Auto Mechanics Carpentry Electricity Welding

Arrangements can be made to provide training in the specific production skills required by an industrial plant. Instruction may be conducted either in the vocational school or in the industrial plant, depending upon the desired arrangement and the availability of special equipment.

Colleges and Universities

<u>Name</u>	<u>Area - Within 60 Miles</u>		<u>Highest Degree Conferred</u>
	<u>Location</u>	<u>Enrollment (Fall, 1972)</u>	
Eastern Kentucky University	Richmond	10,580	Masters, Ph. D. *
Berea College	Berea	1,356	Baccalaureate
Sue Bennett Junior College	London	190	Associate
Hazard Community College	Hazard	203	Associate
Lees Junior College	Jackson	352	Associate

*Cooperative program with the University of Kentucky, Lexington, for a Ph. D. in Education only.

HEALTH

Hospitals

<u>Nearest General Hospitals</u>	<u>Location</u>	<u>Beds</u>
Hazard Appalachian Regional Hospital*	Hazard, Kentucky, 43 miles distant	142
Clay Memorial Hospital**	Manchester, Kentucky, 36 miles distant	63

- Hazard Appalachian Regional Hospital facilities and services - X-ray, emergency, pathology and clinical laboratory, home health service, pharmacy, blood bank, intensive care unit, nursery, two major operating rooms, minor operating room, obstetrics, physical therapy, inhalation therapy, 38-bed skilled nursing facility, pediatric department, emergency ambulance service, mental health unit, child development clinic, infant care program, rehabilitation counseling, social services, chaplain program, volunteer services, and education services

Medical staff - 16 physicians, 43 registered nurses, 79 licensed practical nurses, radiologist, 2 pathologists, 3 pharmacists, 2 surgeons, doctor of internal medicine, pediatrician

- Clay Memorial Hospital facilities - 24-hour emergency service, X-ray room, laboratory, surgery department, delivery room, pathology department, radiology department, social service department

Medical staff - 6 doctors including a pediatrician, surgeon, and radiologist; a part-time obstetrics-gynecology doctor and pathologist; 14 registered nurses, 9 licensed practical nurses, 1 chaplain, and a large number of orderlies and nurse aides making a total staff of 150 full and part-time employees

*Expansion program underway - At the present time the hospital is involved in an expansion program, the second one in two years. Plans call for a 6-bed coronary and intensive care unit, and an emergency care center. Facilities to be expanded will include laboratory, X-ray, pharmacy, surgery and emergency services.

**This hospital was established in September, 1971, with a new structure and all new facilities. It is constructed for easy expansion when necessary.

Other - The Frontier Nursing Service, established in 1925 by Mary Breckinridge, is in service in seven major towns in four counties, including Perry County. Home Place Clinic operating under the direction of Hazard Appalachian Regional Hospital is an outpatient clinic serving northern Perry County with X-ray, laboratory, pharmacy, and home health services. (26 employees)

Public Health

Facility - Owsley County Health Department

Staff - 3 clerks, home health aide, public health nurse, school nurse (full-time); public health nurse, sanitarian, dentist, janitor (part-time)

Budget 1973-74 - \$529,316*

*Lee, Owsley, Perry, Letcher, Knott, and Wolfe Counties are in the Kentucky River District. Total budget for the District is \$529,316.

OTHER LOCAL FACILITIES

Communications

Telephone - Peoples Rural Telephone Cooperative Corporation, Inc.
Services - Standard

Telegraph - Western Union, by telephone to Winchester

Postal - U. S. Post Office
Class - Second
Mail received - Twice daily
Mail dispatched - Twice daily

Newspapers -
Weekly - The Beattyville Enterprise - "Booneville Edition"
Other papers received from - Lexington and Louisville, Kentucky

Radio -
Stations received from - Beattyville, Jackson, Hazard, Lexington and
Louisville, Kentucky

Television -
Reception from - Lexington, Kentucky
Kentucky Educational Television - Channel 35, Hazard, Kentucky

Library Services

Public library - Owsley County Public Library
Size collection - 8,000 volumes
Circulation, 1972-73 - 3,200 per month
Services - Bookmobile services to remote areas, filmstrips for Day
Care Centers, records for older people, G. E. D. Test Manuals

Religious Institutions

Number of churches - 5
Denominations - Baptist, Methodist, Presbyterian, Church of God
Nearest synagogues - Lexington, Kentucky, 87 miles distant
Congregations - Adath Israel (reform); Ohavey Zion (traditional)

Financial Institutions

<u>Bank</u>	<u>Statement as of June 30, 1973</u>	
	<u>Assets</u>	<u>Deposits</u>
Farmers State Bank	\$3,997,631.31	\$3,666,407.86

Hotels and Motels

Total number - 1
Units - 10

Clubs and Organizations

Business and Civic - Lions, Jaycees

Fraternal - Masons, American Legion, VFW

Women's - Eastern Star, Homemakers

Youth - Boy Scouts, Cub Scouts, 4-H, FFA, Glee Club, Beta Club,
Future Homemakers

Other - Sportsman's Club, History Club, Health Club

RECREATION

Local

Public Recreation Facilities

Supervised program - Little League

Playgrounds - 2

Baseball diamonds - 2

Basketball court - 1

Private Recreation Facilities

Movie theater - 1 drive-in

Tourist Attractions

Red River Canoe Race

Area (Within 50 miles)

Natural Bridge State Resort Park

Buckhorn Lake State Resort Park

Levi Jackson Wilderness Road State Park

AGRICULTURE - NATURAL RESOURCES - CLIMATE

Agriculture*

	<u>Owsley County</u>	<u>Labor Market Area</u>
Total land area (acres)	126,080	1,313,984
Percent of area in farm land	49.4	30.5
Number of farms	687	3,851
Average size of farms (acres)	90.6	104.1
1969 value of all farm products	\$1,078,947	\$7,194,641
Value per farm	1,570	1,868
Total crop sales	897,839	4,941,042
Total livestock & livestock products	160,990	2,177,717
1972 agricultural production included:		
Burley tobacco (lbs.) (Est.)	1,961,000	10,215,000
Corn (bu.)**	112,000	661,000
Cattle and calves (number)**	2,000	21,400
Hogs and pigs (number)**	900	6,100
Milk production, 1971 (lbs.)	1,440,000	19,310,000

Natural Resources

Principal mineral resources	Coal and petroleum
Other mineral resources	Clay and small amounts of natural gas in the southwestern part of Owsley County
Acres of commercial forest land	96,700
Most abundant tree species	White oak, red oak, yellow poplar, hickory, yellow pine, soft maple, hard maple, beech

*U. S. Department of Commerce, Bureau of the Census, Census of Agriculture, 1969. U. S. Department of Agriculture and Kentucky Department of Agriculture, Kentucky Agricultural Statistics, 1972.

**Preliminary.

Climate*

Owsley County

Temperature

Annual mean (30-year record)	55.6 degrees
Average annual 1972	54.2 degrees
Record highest, July, 1966** (9-year record)	98.0 degrees
Record lowest, January 1972 (9-year record)	-11.0 degrees
Normal heating degree days (30-year record)	4,683
(Heating degree day totals are the sums of negative departures of average daily temperatures from 65° F.)	

Precipitation

Mean annual total (30-year record)	44.73 inches
Mean annual snow and sleet (28-year record)	16.30 inches
Total precipitation 1972	57.61 inches
Mean number days precipitation (.01 inch or more) (28-year record)	129
Average number days thunderstorms (28-year record)	47

Prevailing winds (17-year record)

South

*U. S. Department of Commerce, Environmental Science Services
Administration, Climatological Data, 1972. Station of record:
Lexington, Kentucky.

**Also on earlier dates, months, or years.

HISTORY

Owsley County was the ninety-sixth county formed in Kentucky. Dating from 1843, its territory was taken from Breathitt, Clay and Estill Counties. The Kentucky River flows along the northern border, and its southern fork runs through the county from a south to north direction.

Owsley County was one of the last areas in Kentucky to be settled. It was a hunting ground which the Indians used. It was explored by Daniel Boone, but was first settled by John Shepard, James Moore, and John Abner who penetrated the wilderness by boat.

The county was named for William Owsley. Owsley practiced law in Garrard County and represented that county in the state legislature. He became popular for advocating that Kentucky's laws should be rewritten to incorporate in them the principle of what was right instead of what appeared to be expedient at the moment. Governor Shelby appointed him to the Supreme Court of the state. Owsley was elected to the governorship of Kentucky and served from 1844 to 1848.

Booneville, the county seat, is located in the north-central section of the county. Booneville was incorporated in 1847, and named after Daniel Boone who often camped at the site and owned some land in the vicinity.

Owsley County is primarily a rural area. In 1972, agriculture provided 350 of the county's 880 jobs, government provided 220, and trade and services provided 61.