

1970

Industrial Resources: Casey County

Kentucky Library Research Collections
Western Kentucky University, spcol@wku.edu

Follow this and additional works at: https://digitalcommons.wku.edu/casey_cty

 Part of the [Business Administration, Management, and Operations Commons](#), [Growth and Development Commons](#), and the [Infrastructure Commons](#)

Recommended Citation

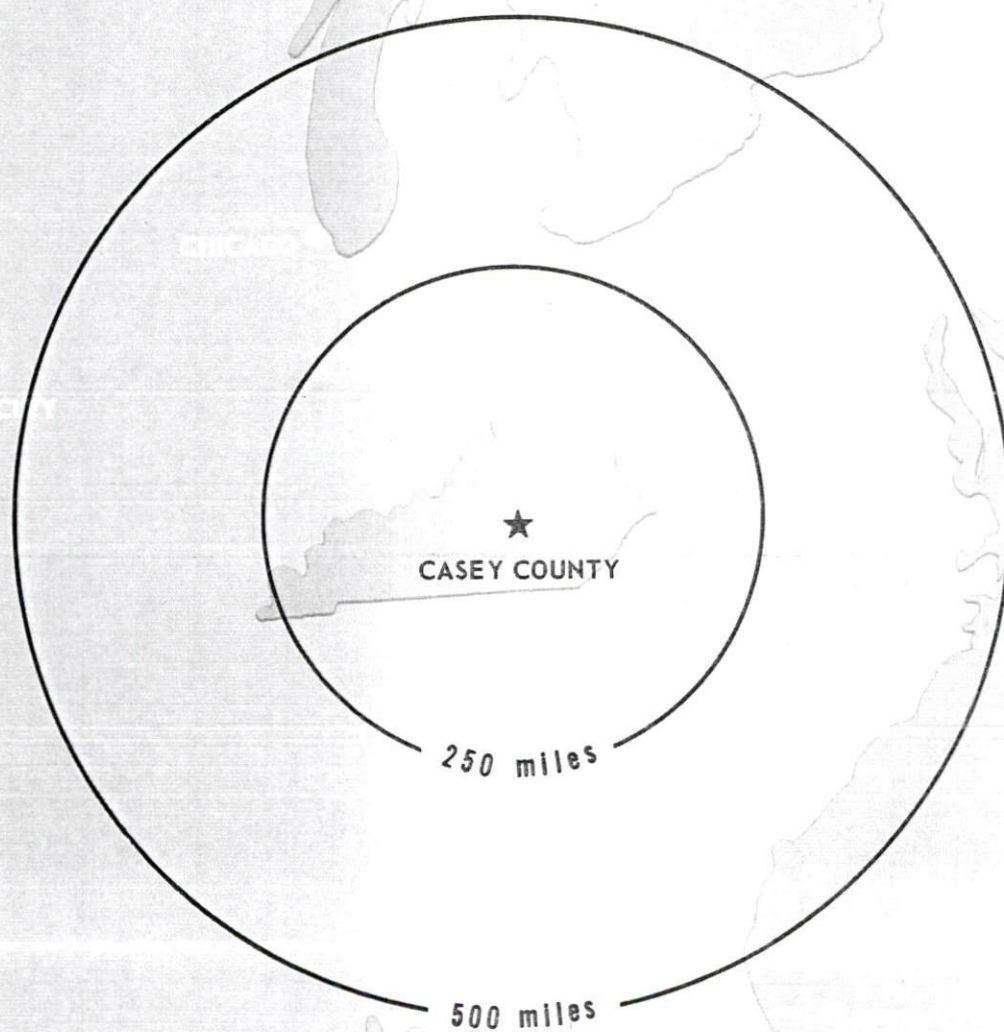
Kentucky Library Research Collections, "Industrial Resources: Casey County" (1970). *Casey County*. Paper 10.
https://digitalcommons.wku.edu/casey_cty/10

This Report is brought to you for free and open access by TopSCHOLAR®. It has been accepted for inclusion in Casey County by an authorized administrator of TopSCHOLAR®. For more information, please contact topscholar@wku.edu.

INDUSTRIAL RESOURCES

CASEY COUNTY

KENTUCKY



CASEY COUNTY INDUSTRIAL SITES

1970

CASEY COUNTY INDUSTRIAL SITES

For additional information concerning the following industrial sites, contact Mr. John B. Murphy, Casey County Industrial Development Foundation, Inc.; Mr. Leslie L. Sanders, Casey County Industrial Development Corporation; or the Kentucky Department of Commerce, Frankfort, Kentucky.

SITE #1: ACREAGE AND TOPOGRAPHY: 45 acres, gently rolling to hilly
LOCATION: One-half mile northeast of city limits
ZONING: None
HIGHWAY ACCESS: Rural highway under construction from U. S. 127
RAILROADS: Not rail served
WATER: Liberty Water Company SIZE LINE: 4-inch, one-half mile from site
GAS: Liberty Gas Company and Somerset Gas Company SIZE LINE: 8-, 6-, and 3-inch lines bisect site
ELECTRICITY: Inter-County RECC
SEWERAGE: Main one-half mile from site
OPTIONED BY: Casey County Industrial Development Corporation

SITE #2: ACREAGE AND TOPOGRAPHY: 35 acres, gently rolling to hilly
LOCATION: Northeast Liberty city limits
ZONING: None
HIGHWAY ACCESS: Woodrum Ridge Road (paved) from U. S. 127
RAILROADS: Not rail served
WATER: Liberty Water Company SIZE LINE: 4-inch
GAS: Liberty Gas Company SIZE LINE: 3-inch
ELECTRICITY: Kentucky Utilities Company and Inter-County RECC
SEWERAGE: Municipal sewerage system
OPTIONED BY: Casey County Industrial Development Corporation

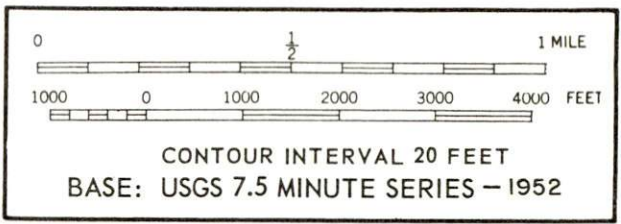
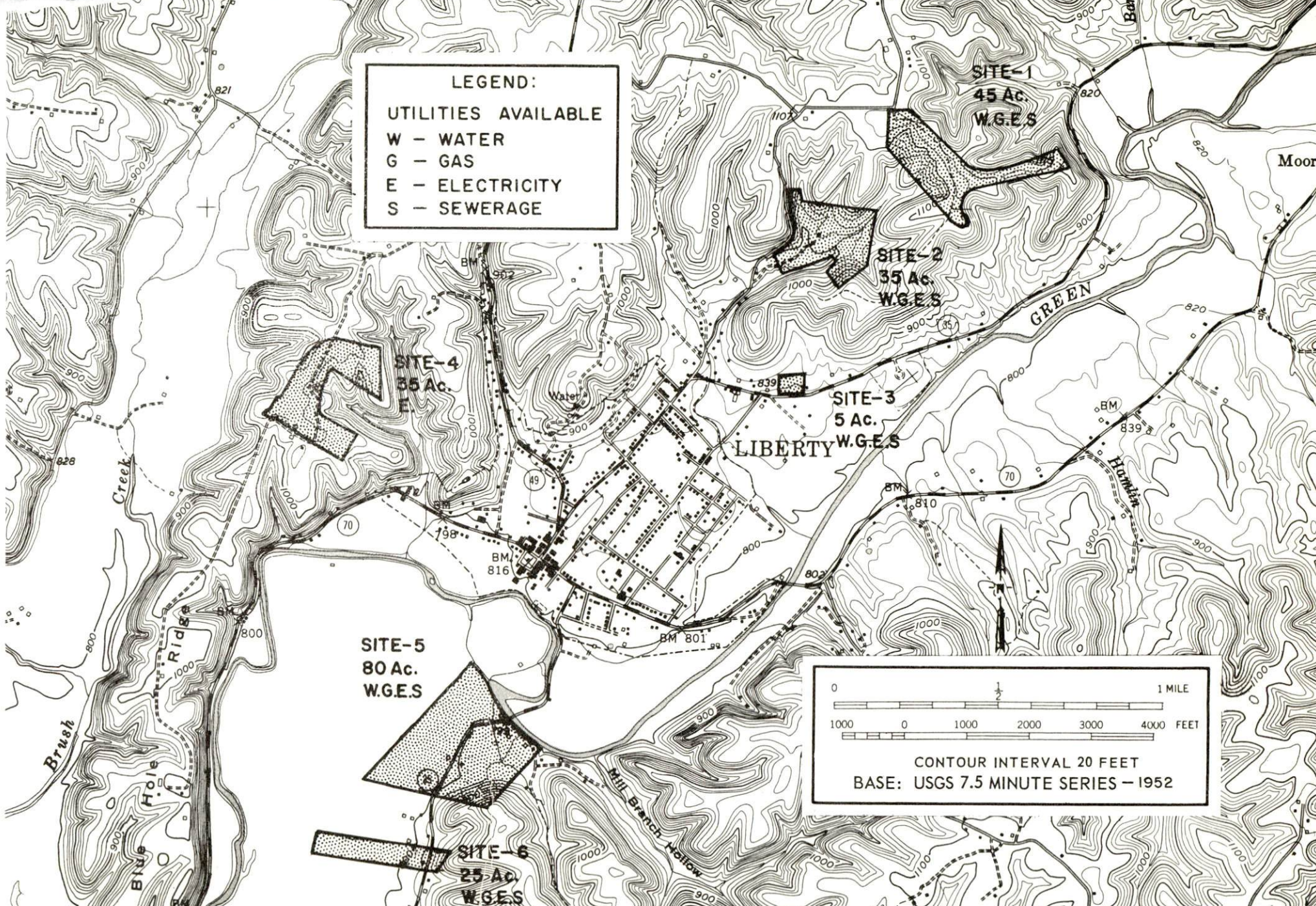
SITE #3: ACREAGE AND TOPOGRAPHY: 5 acres, level land
LOCATION: Northeast city limits
ZONING: Commercial and industrial
HIGHWAY ACCESS: Old Kentucky 35 from U. S. 127
RAILROADS: Not rail served
WATER: Liberty Water Company SIZE LINE: 4-inch
GAS: Liberty Gas Company SIZE LINE: 2-inch
ELECTRICITY: Kentucky Utilities Company
SEWERAGE: Municipal sewerage system SIZE LINE: 8-inch
OPTIONED BY: Casey County Industrial Development Corporation

SITE #4: ACREAGE AND TOPOGRAPHY: 35 acres, level to gently rolling land (168 additional adjoining acres available)
LOCATION: Approximately 1,000 feet west of city limits
ZONING: None
HIGHWAY ACCESS: Unpaved road from Kentucky 49 and 70
RAILROADS: Not rail served
WATER: Liberty Water Company SIZE LINE: 6-inch, 1,000 feet from site
GAS: Liberty Gas Company SIZE LINE: 2-inch, 1,000 feet from site
ELECTRICITY: Inter-County RECC
SEWERAGE: Municipal sewerage system, 1,000 feet from site
OWNERSHIP: Private

SITE #5: ACREAGE AND TOPOGRAPHY: 80 acres, level land (80 additional adjoining acres available)
LOCATION: One-third mile southwest of city limits
ZONING: None
HIGHWAY ACCESS: U. S. 127 at southeast border of site
RAILROADS: Not rail served
WATER: Liberty Water Company SIZE LINE: 6-inch, 1,500 feet from site
GAS: Liberty Gas Company SIZE LINE: 2-inch, 1,500 feet from site
ELECTRICITY: Kentucky Utilities Company
SEWERAGE: Municipal sewerage system, 1,500 feet from site
OPTIONED BY: Casey County Industrial Development Foundation, Inc.

SITE #6: ACREAGE AND TOPOGRAPHY: 25 acres, level land (20 additional adjoining acres available)
LOCATION: 1 mile southwest of city limits
ZONING: None
HIGHWAY ACCESS: U. S. 127 at southeast border
RAILROADS: Not rail served
WATER: Liberty Water Company SIZE LINE: 6-inch, 1 mile from site
GAS: Liberty Gas Company SIZE LINE: 2-inch, 1 mile from site
ELECTRICITY: Kentucky Utilities Company
SEWERAGE: Municipal sewerage system, 1 mile from site
OPTIONED BY: Casey County Industrial Development Foundation, Inc.

LEGEND:
UTILITIES AVAILABLE
W - WATER
G - GAS
E - ELECTRICITY
S - SEWERAGE



INDUSTRIAL RESOURCES
CASEY COUNTY, KENTUCKY

Prepared by
The Kentucky Department of Commerce
in cooperation with
The Casey County Industrial Foundation

1970

TABLE OF CONTENTS

<u>Chapter</u>	<u>Page</u>
INDUSTRIAL SITES	i
CASEY COUNTY, KENTUCKY - A RESOURCE PROFILE . . .	1
THE LABOR MARKET	3
Population Trends	3
General Employment Characteristics, 1968	3
Manufacturing Employment Trends by Industry	3
Casey County Manufacturing Firms, Their Products and Employment	4
Wage Rates for Selected Occupations	6
Labor Organizations	6
Current and Future Labor Supply	7
Total Personal Income	7
Per Capita Personal Income	7
EDUCATION	8
Public Schools	8
Parochial, Private and Special Schools	8
Vocational Schools	8
Colleges and Universities	9
TRANSPORTATION	10
Rail	10
Truck Service	10
Air	11
Taxi	11
POWER AND FUEL	12
Electricity	12
Natural Gas	12
WATER AND SEWERAGE	13
Water	13
Sewerage	13

<u>Chapter</u>	<u>Page</u>
LOCAL GOVERNMENT	14
City	14
County	14
Assessed Value of Property - 1969	14
Local General Property Tax Rates Per \$100 of Assessed Valuation - 1969	14
Planning and Zoning	14
Safety	15
Police	15
Fire	15
Sanitation	15
HEALTH	17
Hospitals	17
Nursing Homes	17
Public Health	17
OTHER LOCAL FACILITIES	18
Communications	18
Library Services	18
Religious Institutions	18
Financial Institutions	19
Hotels and Motels	19
Clubs and Organizations	19
RECREATION	20
Local	20
Area	20
AGRICULTURE - NATURAL RESOURCES - CLIMATE	22
Agriculture	22
Natural Resources	22
Climate	22
HISTORY	23

CASEY COUNTY, KENTUCKY - A RESOURCE PROFILE

Location

Casey County is located in southcentral Kentucky, and is situated within two of the state's physiographic regions. The northern section of the county lies within the Knobs region, while the southern part is located in the Mississippian Plateau. Casey County is bounded on the north by Boyle County, on the east by Lincoln and Pulaski Counties, and on the west and south by Marion, Taylor, Adair, and Russell Counties. The 1970 population of Casey County is estimated at 13,200.

Liberty, the county seat, is located along the Green River and is the county's only incorporated community. It is approximately 90 miles southeast of Louisville, Kentucky, 145 miles south of Cincinnati, Ohio, and 175 miles northwest of Knoxville, Tennessee.

The Economic Framework

Total employment in Casey County averaged over 4,000 in 1968, with agriculture providing over 1,700 of these jobs. Manufacturing accounted for nearly 750 jobs. During the first nine years of the decade, manufacturing employment increased by over 400 percent. Major industrial products include women's sportswear and lumber.

The county's per capita income in 1968 was \$1,255. This figure was considerably below the Kentucky average, indicating a real potential for economic growth.

In the Casey County labor market area, which includes Casey and its seven surrounding counties, total employment in 1968 averaged 51,700. Over 13,000 of these jobs were supplied by agriculture, while over 12,000 were provided by manufacturing. Area industrial employment is heaviest in the apparel industry.

Despite important industrial gains in recent years, the area still has a deficit of 1,351 manufacturing jobs when measured against the national industrial employment-population ratio. This indicates an area where the potential for additional manufacturing production is good.

Resources For Growth

1. There is a current estimated labor supply of over 7,100 men and 5,200 women available for industrial jobs in the labor market area. In addition, by 1976 there will be nearly 7,800 young men and 7,600 young women who will have become 18 years of age and potentially available for work.

2. Casey County has six available industrial sites ranging from 5 to 100 acres.

3. Educationally, Casey County enjoys proximity to two four-year colleges, two junior colleges, and a community college. In addition, there is an area vocational school located in Somerset, 38 miles distant, and a vocational extension center located at Russell Springs, some 20 miles distant.

Community Programs For Improvement

In recent years, a new sewerage disposal plant, post office, and state highway garage have all been completed. A new multi-purpose room has been added onto the Garrett Elementary School located near Yosemite, and the facilities at the rest home have been enlarged. In addition, a 32-unit low-rent public housing project was completed in 1967 and the country club and golf course was completed in 1968. New churches, homes, and stores have been built throughout Casey County in recent years.

The Liberty Fire Department is in the process of installing two-way radios in the cars of many of its volunteers. Now under construction is a vocational education extension school and high school gymnasium, both scheduled for completion by the Fall of 1970.

Plans for the future include the addition of a new library at the Liberty Elementary School, and the construction of a dam on the Green River for watershed, flood control, and water source purposes.

Recreation, Entertainment and Livability

Casey County is a sportsman's haven. Fishermen enjoy excellent fishing in the Green River. Hunters enjoy excellent fox and racoon hunting.

Casey countians also enjoy proximity to Cumberland Lake and the outstanding fishing and water sports found there, in addition to the facilities of both General Burnside Island State Park and Lake Cumberland State Park.

Liberty is located approximately 60 miles from Lexington, where all the advantages of a more metropolitan-university area can be found, including a symphony orchestra, civic ballet, and several theater companies.

THE LABOR MARKET

POPULATION TRENDS ^{1/}

	Population			Percent Change	
	1970 (Est.)	1960	1950	1960-70	1950-60
Liberty		1,578	1,291		+ 22.2
Labor Market Area	141,900	145,436	158,033	-2.0	- 8.0
Casey County	13,200	14,327	17,446	-7.2	- 17.9
Adair County	13,800	14,699	17,603	-5.4	- 16.5
Boyle County	22,400	21,257	20,532	+4.9	+ 3.5
Lincoln County	15,600	16,503	18,668	-4.9	- 11.6
Marion County	15,800	16,887	17,212	-5.8	- 1.9
Pulaski County	34,400	34,402	38,452	0	- 10.5
Russell County	10,700	11,076	13,717	-3.3	- 19.3
Taylor County	16,300	16,285	14,403	+0.1	+ 13.1

GENERAL EMPLOYMENT CHARACTERISTICS, 1968 ^{2/}

Major Employment Group	Employment	
	Casey County	Labor Market Area
TOTAL	4,039	51,710
Agricultural	1,747	13,047
Nonagricultural	2,292	38,663
Manufacturing	745	12,601
Trade and Services	368	8,101
Government	353	6,186
Other	826	11,775

MANUFACTURING EMPLOYMENT TRENDS BY INDUSTRY
SEPTEMBER 1960 AND 1969 ^{3/}

Industry	Casey County			Labor Market Area		
	1969	1960	% Change	1969	1960	% Change
TOTAL	681	162	+ 420.4	12,697	6,468	+127.2
Food & Kindred Products	0	0		617	646	- 4.5
Apparel, Textiles, Leather	339	5	+6680.0	6,432	3,796	+ 69.4
Lumber & Furniture	342	157	+ 117.8	2,550	911	+179.9
Printing, Publishing, Paper	0	0		763	140	+445.0
Chemicals, Petroleum, Coal, Rubber	0	0		250	92	+171.7
Stone, Clay & Glass	0	0		967	656	+ 47.4
Machinery & Metal Products	0	0		1,109	200	+454.5
Other	0	0		9	27	- 66.7

CASEY COUNTY MANUFACTURING FIRMS,
THEIR PRODUCTS AND EMPLOYMENT ^{4/}

Firm	Product	Employment		
		Total	Male	Female
<u>Bethelridge</u>				
Elza Jasper	Lumber	6	6	0
<u>Clements ville</u>				
Herman Woodrum Lumber Co.	Rough lumber	6	6	0
<u>Dunnville</u>				
Charles E. Pierce	Wooden farm gates	2	1	1
Roger F. Tarter Co.	Farm gates	60	52	8
Terry Bros.	Gates, pallets, lumber	26	22	4
<u>Liberty</u>				
Claud Buis	Lumber	2	2	0
Casey County Farm Supply	Custom mixed feed	3	3	0
Casey County News	Newspaper, job printing	5	4	1
Casey Stone Co.	Ready mixed concrete, agricultural lime	20	20	0
Clements Handle Mill	Baseball bats, hockey blades, furniture dimension	3	3	0
Davenport Lumber Co.	Rough lumber, furniture squares, charcoal wood	12	12	0
Grooms Brothers Lumber Co.	Lumber, tobacco sticks, pallets	8	8	0
H. R. Heckman	Rough lumber	10	10	0
Lanham Handle Mill	Handles, brush blocks	2	2	0
Liberty Sportswear, Inc.	Women's sportswear	325	30	295
Freeman Monday & Sons	Lumber, crossties	10	10	0
Murphy Handle Mill	Dimension hardwood lumber, custom furniture parts, wood pallets	6	6	0
Addie Phillips & Son Lumber Co.	Lumber, furniture squares	17	16	1
David Ponder Lumber Co.	Lumber, pallet lumber, furniture squares	20	19	1
Sanders Brothers Milling Co.	Lumber, pallets	5	3	2
Tarters Feed Mill	Feed	5	5	0
Watson Lumber Co., Inc.	Baseball bats, furniture squares, lumber	62	60	2



Liberty Sportswear, Inc.



Watson Lumber Co., Inc.

WAGE RATES FOR SELECTED OCCUPATIONS
LIBERTY, KENTUCKY 5/

Classification	Rates Per Hour		
	Starting	Maximum	Prevailing
<u>Production Employees</u>			
Inspector	\$1.65	\$1.85	\$1.75
<u>Service Employees</u>			
Electrician (Class-A)	\$2.50	\$3.00	\$2.75
Laborer	1.60	1.80	1.70
Truck Driver, Industrial (Class-A)	1.75	2.00	1.85
<u>Office Employees</u>			
Bookkeeper	\$1.65	\$1.85	\$1.75
File Clerk	1.60	1.80	1.70
Receptionist	1.60	1.80	1.70
Secretary	1.70	1.90	1.80
Typist	1.60	1.70	1.65

LABOR ORGANIZATIONS

There are no labor organizations representing manufacturing workers in Casey County.

CURRENT AND FUTURE LABOR SUPPLY -
CASEY COUNTY LABOR MARKET AREA

County	Current Labor Supply 1970 ^{6/}			Future Labor Supply by 1976 (Becoming 18 Years of Age) ^{7/}		
	Total	Male	Female	Total	Male	Female
Labor Market Area	12,392	7,167	5,225	15,308	7,781	7,527
Casey	1,866	1,098	768	1,518	769	749
Adair	1,715	1,003	712	1,428	707	721
Boyle	602	365	237	2,009	997	1,012
Lincoln	1,886	1,246	640	1,746	924	822
Marion	750	490	260	2,191	1,092	1,099
Pulaski	2,989	1,434	1,555	3,639	1,879	1,760
Russell	1,886	1,135	751	1,132	588	544
Taylor	698	396	302	1,645	825	820

TOTAL PERSONAL INCOME ^{8/}

Area	1968	1959	% Change
Casey County	\$ 16,385,000	\$ 9,591,000	+70.8
Labor Market Area	279,427,000	169,540,000	+64.8
Kentucky	8,360,000,000	4,655,000,000	+79.6

PER CAPITA PERSONAL INCOME ^{9/}

Area	1968	1959	% Change
Casey County	\$ 1,255	\$ 690	+81.9
Labor Market Area	\$1,255 - 2,625	\$ 690 - 1,555	+81.9 to +68.8
Kentucky	2,645	1,552	+70.4

EDUCATION

Public Schools

	<u>Casey County</u>
Total Enrollment	3,024
Elementary	2,109
High School	915
Student-Teacher Ratio	23-1
Elementary	22-1
High School	25-1
State Rating of High School	Provisional
Percent High School Graduates to College	19.4
Current Expenditures Per Pupil (1968-69)	\$379
Bonded Indebtedness as of January 1970	\$1,175,000

Parochial, Private and Special Schools

	<u>Parochial</u>
Total Enrollment	64
Elementary	64
Student-Teacher Ratio	20-1

Vocational Schools

	<u>Nearest Area School</u>	<u>Nearest Extension Center</u>
Location	Somerset	Russell Springs
Miles Distant	38	23
Curriculum	Accounting Jr. Mgmt. General Clerical Secretarial-Steno Health Careers Distributive Education Electronics (Technology)	Auto Mechanics Carpentry Drafting Electricity Welding

Nearest Area
School (Cont'd.)

Appliance Repair
Auto Mechanics
Drafting
Machine Shop
Printing

Colleges and Universities

<u>Name</u>	<u>Area - Within 50 miles</u>		<u>Highest Degree Conferred</u>
	<u>Location</u>	<u>Enrollment</u>	
Campbellsville College	Campbellsville	882	Baccalaureate
Centre College	Danville	749	Baccalaureate
Somerset Community College	Somerset	577	Associate
Lindsey Wilson Junior College	Columbia	574	Associate
St. Catharine College	St. Catharine	156	Associate

TRANSPORTATION

Rail

Line serving - The Southern Railway, located 16 miles distant at Moreland, Kentucky, is the nearest rail transportation.

Services - Carload freight, siding space, switching

RAILWAY TRANSIT TIME FROM MORELAND, KENTUCKY, TO: 10/

City	No. of Days		City	No. of Days	
	CL			CL	
Atlanta, Ga.	2		Los Angeles, Calif.	7	
Birmingham, Ala.	2		Louisville, Ky.	1	
Chicago, Ill.	3		Nashville, Tenn.	3	
Cincinnati, Ohio	1		New Orleans, La.	3	
Cleveland, Ohio	3		New York, N. Y.	5	
Detroit, Mich.	3		Pittsburgh, Pa.	4	
Knoxville, Tenn.	2		St. Louis, Mo.	2	

Truck Service

Company

Home Office

McDuffee Motor Freight,
Inc.
Sanders & Leigh Transfer
Co.

Lebanon, Kentucky

Liberty, Kentucky

HIGHWAY MILES AND TRUCK TRANSIT TIME IN DAYS FROM
LIBERTY, KENTUCKY, TO SELECTED MARKET CENTERS

City	Highway Miles	Delivery		City	Highway Miles	Delivery	
		Time	TL			Time	TL
Atlanta, Ga.	372	3	11/	Los Angeles, Calif.	2,361	6	
Birmingham, Ala.	349	3		Louisville, Ky.	93	Overnight	
Chicago, Ill.	391	2		Nashville, Tenn.	162	2	
Cincinnati, Ohio	148	2		New Orleans, La.	765	5	
Cleveland, Ohio	396	3		New York, N. Y.	826	4	
Detroit, Mich.	417	4		Pittsburgh, Pa.	448	7	
Knoxville, Tenn.	178	2		St. Louis, Mo.	357	2	

Air

	<u>Local</u>	<u>Nearest Commercial</u>
Location:	Arnold Airport (private) 3 miles southeast of Springfield	Blue Grass Field Lexington, approx- imately 60 miles distant
Runways:	2 paved	3 paved
Length:	1,950 feet; 2,500 feet	6,500 feet; 3,500 feet; 3,500 feet
Traffic Control:	Wind sock and wind tee	Tower, guards, approach control, ground control, ILS system
Lighting:	Runway lights	Approach lighting system, beacon, runways and obstruc- tion lighted
Services:	80, 100 octane, general flying, charter, spray service, parachute jumper training supplies	80, 100, and 145 octane; jet fuel; major A&E repairs; storage; restaurant; Weather Bureau; flight instruction; charter service; taxi; U-Drive-It service; Eastern, Delta, Piedmont, and Allegheny Airlines

Taxi

Rodgers Cab Company

POWER AND FUEL

Electricity

Company serving Liberty - Kentucky Utilities Company
Source of power - Kentucky Utilities Company
Total generating capacity - 740,000 KW
Industrial rates negotiated by - Kentucky Utilities Company
(Lexington Office)

Company serving Casey County - Inter-County RECC, Taylor County
RECC, and South Kentucky RECC
Source of power - East Kentucky Power Cooperative
Total generating capacity - 515,000 KW
Industrial rates negotiated by - Inter-County RECC, Danville; Taylor
County RECC, Campbellsville; and South Kentucky RECC, Somerset

Natural Gas

Company serving Liberty - Liberty Gas Company
Source of supply - Texas Eastern Transmission Corporation
Size of transmission lines - 3 1/2 inches
Distribution lines - 1 and 2 inches
BTU content - 1,000+

Rates:

First	500 cu. ft.	\$1.65 (Minimum)
Next	1,500 cu. ft.	1.38 per M cu. ft.
Next	1,000 cu. ft.	1.10 per M cu. ft.
Next	2,000 cu. ft.	.99 per M cu. ft.
Next	5,000 cu. ft.	.94 per M cu. ft.
Next	10,000 cu. ft.	.88 per M cu. ft.
Over	20,000 cu. ft.	.83 per M cu. ft.

WATER AND SEWERAGE

Water

Company serving Liberty - Liberty Water Company
Source - Green River
Treatment plant capacity - 360,000 gpd
Average daily consumption - 175,000 gallons
Peak daily consumption - 280,000 gallons
Type treatment - settling, filtration, chlorination
Storage capacity - 250,000 gallons; Average pressure - 180 psi
Size mains - 2, 4, and 6 inches

MONTHLY WATER RATES FOR WHOLESALE AND INDUSTRIAL CONSUMERS

First	2,000 gallons	\$2.75 per 1,000 gallons
Next	4,000 gallons	1.00 per 1,000 gallons
Next	5,000 gallons	.80 per 1,000 gallons
Next	9,000 gallons	.65 per 1,000 gallons
Next	20,000 gallons	.50 per 1,000 gallons
Next	30,000 gallons	.40 per 1,000 gallons
All over	70,000 gallons	.35 per 1,000 gallons

Surface water sources - Green River and possible small impoundments
Expected ground water yield - major portion of county is 5 or less gpm
Yield along main streams - 5 to 50 gpm

Sewerage

Company serving Liberty - municipal
Design capacity - 260,000 gpd
Average daily flow - 140,000 gallons
Treatment - primary and secondary
Type treatment - aeration, chlorination
Treated effluent discharged into - Green River
Size of sanitary mains - 4, 6, and 8 inches
Rates - 70 percent of water bill

LOCAL GOVERNMENT

City

Liberty

Structure - Mayor - 4-year term; 6 councilmen - 2-year terms
 Budget 1968-69 - General Fund \$36,046; Water and Sewer Fund \$42,000
 Fees and licenses - Unloading licenses - \$30 annually

County

Structure - County judge - 4-year term; 8 magistrates - 2-year terms
 Budget 1969-70 - General Fund \$79,400; Road Fund \$29,950

Assessed Value of Property - 1969

<u>Classes of Property*</u>	<u>Casey County</u>
Real Estate	\$41,891,820
Tangibles	7,133,920
Public Service	24,748,386

Local General Property Tax Rates Per \$100 of Assessed Valuation - 1969 ^{12/}

<u>Taxing Unit**</u>	<u>Liberty</u>	<u>Casey County</u>
State	\$.015	\$.015
County	.114	.114
School	.363	.363
City	.187	
Total	\$.679	\$.492

Planning and Zoning

Agency - Liberty Planning Commission
 Codes adopted - Housing and building codes

*Property assessed at 100 percent of fair value.

**Manufacturing machinery, raw materials inventories and goods in process inventories are not subject to local tax. State rate is only \$0.15 per \$100.

Safety

Police

Liberty

Casey County

Total staff	4	3
Radio-patrol cars	1	3

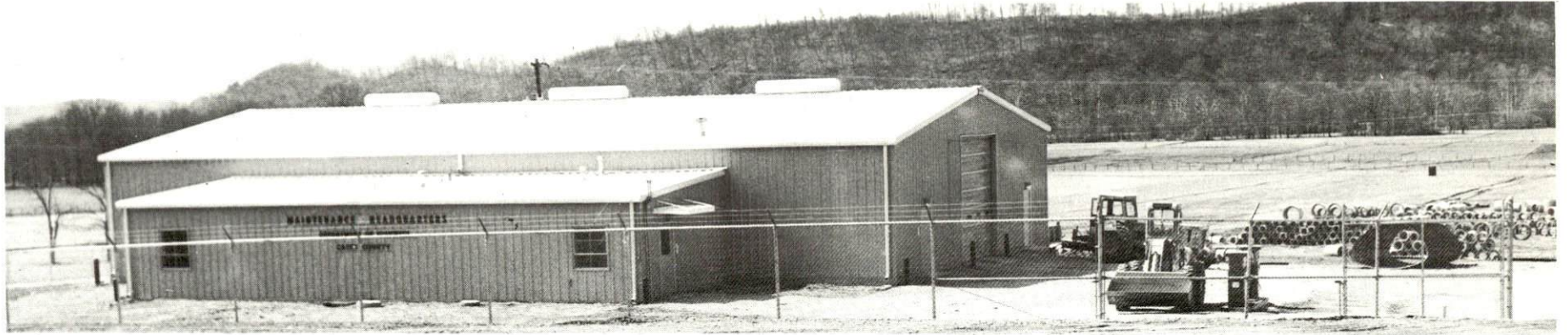
Fire

American Insurance Association Fire Rating	8
Volunteers	13
Equipment:	
500 gpm pumpers	1
250-gallon tank booster	
radio-equipped panel truck	1

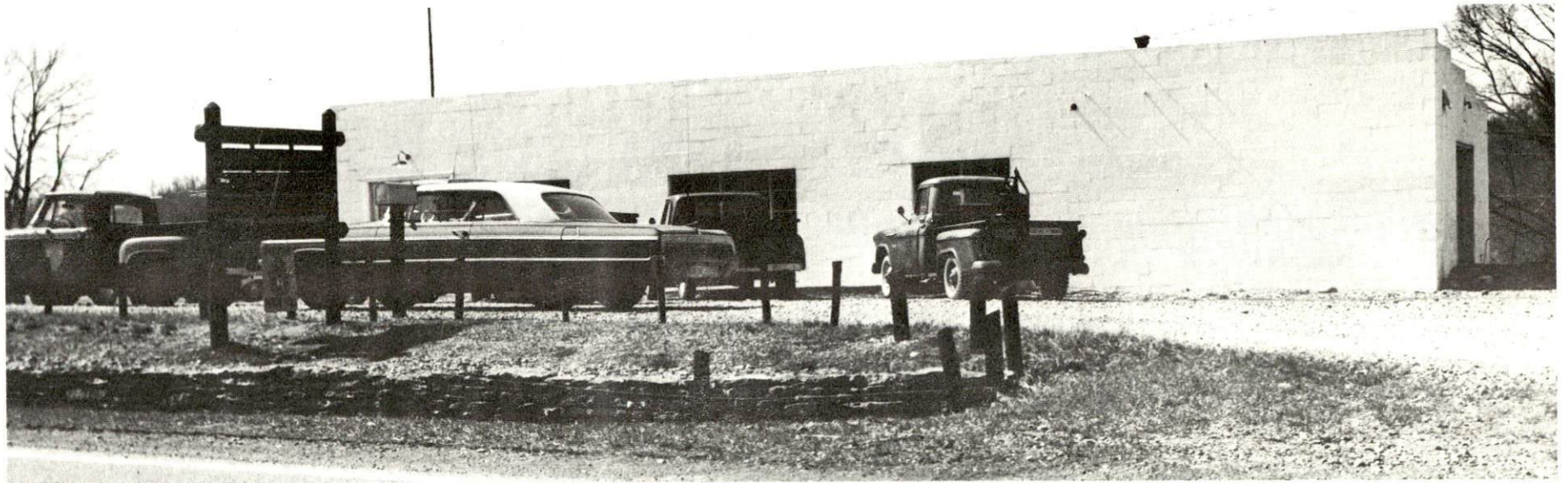
Sanitation

Liberty

Type service	municipal
Cost:	
residential	\$1 per month
business	\$2 to \$10 per month
Collection frequency:	
residential	weekly
business	daily
Trash pickup	none
Disposal method	city dump



New State Highway Garage



Ranger Station - Kentucky Department of Forestry

HEALTH

Hospitals

	<u>Location</u>	<u>Beds</u>
Casey County War Memorial Hospital	Liberty	24
General hospital facilities - Emergency room, operating room, EKG, X-ray, laboratory facilities, maternity ward		
Medical staff - 4 doctors, 5 registered nurses, 6 licensed practical nurses		

Nursing Homes

	<u>Number</u>	<u>Beds</u>
Personal care homes	1	26

Public Health

Facility - Casey County Health Department
Staff - Health officer (part-time), registered nurse, sanitarian, clerk
Budget 1969-70 - \$26,331

OTHER LOCAL FACILITIES

Communications

Telephone - General Telephone Company of Kentucky
Services - standard

Postal - U. S. Post Office - Liberty
Class - 2
Mail received - once daily
Mail dispatched - once daily

Newspapers - Casey County News
Weekly and circulation - 5,500
Other papers received from - Louisville, Lexington, and Danville

Radio - WKDO
Hours of operation AM - sunrise to sunset
Stations received from - Lexington and Louisville

Television -
Cable service
Reception from - Lexington, Louisville, and Bowling Green, Kentucky;
Nashville, Tennessee
Kentucky Educational Television - Channel 29 - Somerset

Library Services

Public libraries - Casey County Library
Size collection - 8,060
Circulation, 1969 - 5,000
Services - record circulation

Religious Institutions

Number of churches - 48
Denominations - Baptist, Christian, Disciples of Christ, Church of
Christ, Church of God, Methodist

Financial Institutions

<u>Bank</u>	<u>Statement as of December 31, 1969</u>	
	<u>Assets</u>	<u>Deposits</u>
The Casey County Bank	\$6,762,294.06	\$6,163,657.60
Farmers Deposit Bank	3,138,898.38	2,765,067.74

Hotels and Motels

<u>Number</u>	<u>Units</u>
3	46

Clubs and Organizations

Liberty

Business and Civic - Kiwanis Club

Fraternal - Masonic, American Legion, VFW, Veterans Funeral Squad

Women's - Eastern Star, Homemakers

Youth - Boy Scouts, Little League, 4-H, FFA, FHA

Other - PTA, Farm Bureau, Casey County Extension Council,
Sportsman Club, Fox Hunting Club, Raccoon Hunting Club, Riding Club

RECREATION

Local

Liberty

Public Recreation Facilities

Parks	1
Playgrounds	6 (at school locations)
Baseball diamonds	2
Other	2 basketball courts

Private Recreation Facilities

Country club	1
Golf course	1
Swimming pool	1
Movie theaters	2 (1 indoor, 1 drive-in)
Bowling lane	1
Other	roller skating rink

Area (Within 50 miles)

State parks - General Burnside Island State Park, Lake Cumberland State Park

State shrines - Constitution Square State Shrine

Other attractions - McDowell Home & Apothecary Shop, Old Crow Inn, Wilderness Road Village-of-the-Arts, Centre College (Danville)



9-Hole Golf Course - Hickory Hills Country Club

AGRICULTURE - NATURAL RESOURCES - CLIMATE

Agriculture 13/

	<u>Casey County</u>	<u>Labor Market Area</u>
Total land area (acres)	214,531	1,761,157
Percent of area in farm land	77.1	85.7
Number of farms	2,022	14,518
Average size of farms (acres)	106.1	104.0
1964 value of all farm products	\$5,367,649	\$48,385,864
Value per farm	3,799	3,333
Total crop sales	3,267,198	25,185,929
Total livestock & livestock products	2,098,351	23,137,493
1967 agricultural production included:		
Burley tobacco (lbs.)	4,451,000	33,029,000
Corn (bu.)	934,000	7,510,000
Cattle and calves (number)	29,400	285,900
Hogs and pigs (number)	8,100	87,600
Milk production (1966) (lbs.)	38,080,000	302,750,000

Natural Resources

Principal mineral resources	Limestone and dolomite
Acres of commercial forest land	152,700
Most abundant tree species	White oaks, red oaks, hickories, yellow poplar, beech, hard maple, ash, and blackgum

Climate 14/

	<u>Casey County</u>
Temperature	
Annual mean (30-year record)	55.6° F.
Average annual 1968	51.1° F.
Record highest July 1966+ (5-year record)	98.0° F.
Record lowest January 1966+ (5-year record)	-10.0° F.
Seasonal heating degree-days (30-year record)	4,683
Precipitation	
Mean annual total (30-year record)	44.73 inches
Mean annual snow and sleet (24-year record)	16.0 inches
Total precipitation 1968	43.32 inches
Mean No. days precipitation (24-year record) (.01 inches or more)	128
Average No. days thunderstorms (24-year record)	48
Prevailing winds (17-year record)	south

HISTORY

Casey County was founded in 1806 and was established as the forty-sixth Kentucky county. It was named for Colonel William Casey, a native of Virginia, who migrated to Kentucky during the Revolutionary War and later resided in Casey County. He took an active part in defending the frontier against Indian attacks, and rendered valuable service to the young settlements by establishing a station several miles west of them which bore the brunt of Indian fury for several years.

Casey County was one of the counties that gave Governor John W. Stevenson's administration some concern immediately after the Civil War regarding the raids of the "Regulators." These bands operated outside the law. They claimed to be punishing only persons who were known to be enemies of the public welfare. Some of their victims were cruelly murdered, and more whites than blacks were whipped. It is difficult to determine what their motives were; however, the Governor called out troops to stop them.

Liberty was incorporated as the county seat in 1830. It was named by veterans of the Revolutionary War who came into the area in the 1790's.

SOURCES OF INFORMATION

- 1/ U. S. Department of Commerce, Bureau of the Census, Census of Population, 1950, 1960. Department of Rural Sociology, University of Kentucky, Kentucky County Provisional Population Estimates: January 1, 1970.
- 2/ Kentucky Department of Economic Security, Division of Research and Statistics.
- 3/ Kentucky Department of Economic Security, Number of Workers in Manufacturing Industries Covered by Unemployment Insurance Law Classified by Industry and County, September 1960, September 1969.
- 4/ Kentucky Department of Commerce, 1970 Kentucky Directory of Manufacturers.
- 5/ Kentucky Department of Economic Security, Division of Employment Service, Danville Office.
- 6/ Kentucky Department of Economic Security, Kentucky Labor Supply Estimates by County, January 1970.
- 7/ Kentucky Department of Commerce, Future Labor Supply by 1976.
- 8/ University of Kentucky, Office of Development Services and Business Research, Total Personal Income for Kentucky.
- 9/ University of Kentucky, Office of Development Services and Business Research, Per Capita Income in Kentucky.
- 10/ Southern Railway System, Louisville, Kentucky.
- 11/ Sanders & Leigh Transfer Company, Liberty, Kentucky.
- 12/ Kentucky Department of Revenue, Kentucky Property Tax Rates, 1969.
- 13/ U. S. Department of Commerce, Bureau of the Census, Census of Agriculture, 1964. U. S. Department of Agriculture and Kentucky Department of Agriculture, Kentucky Agricultural Statistics, 1968.
- 14/ U. S. Department of Commerce, Environmental Science Services Administration, Climatological Data, 1967.

All other information was obtained from governmental offices, local businesses and organizations.

This copy has been prepared by the Kentucky Department of Commerce,
Division of Research and Planning, and the cost of printing paid from
state funds.