

1969

# Industrial Resources: Clay County - Manchester

Kentucky Library Research Collections  
Western Kentucky University, [spcol@wku.edu](mailto:spcol@wku.edu)

Follow this and additional works at: [https://digitalcommons.wku.edu/clay\\_cty](https://digitalcommons.wku.edu/clay_cty)

 Part of the [Business Administration, Management, and Operations Commons](#), [Growth and Development Commons](#), and the [Infrastructure Commons](#)

---

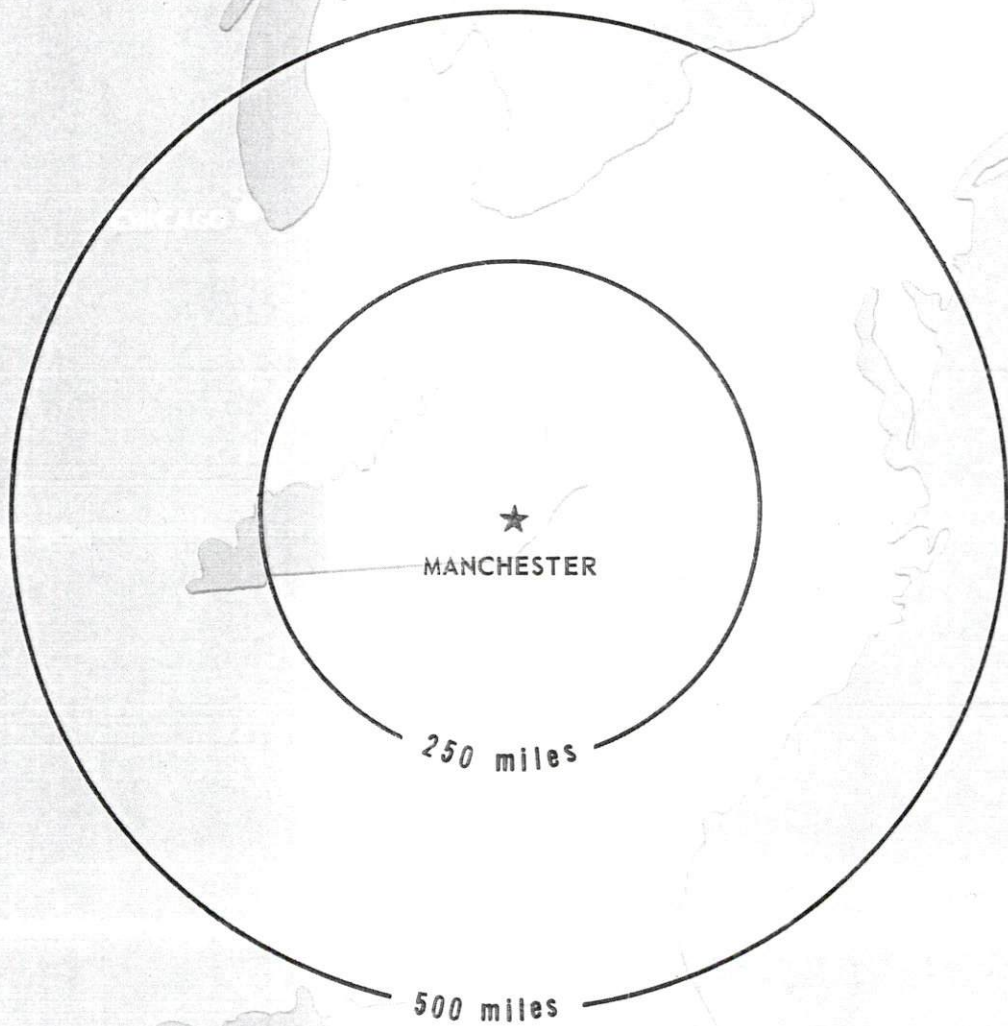
## Recommended Citation

Kentucky Library Research Collections, "Industrial Resources: Clay County - Manchester" (1969). *Clay County*. Paper 9.  
[https://digitalcommons.wku.edu/clay\\_cty/9](https://digitalcommons.wku.edu/clay_cty/9)

This Report is brought to you for free and open access by TopSCHOLAR®. It has been accepted for inclusion in Clay County by an authorized administrator of TopSCHOLAR®. For more information, please contact [topscholar@wku.edu](mailto:topscholar@wku.edu).

# INDUSTRIAL RESOURCES

## ***MANCHESTER, KENTUCKY***



# CURRENT INDUSTRIAL RESOURCES

## CURRENT INDUSTRIAL RESOURCES, MANCHESTER, KENTUCKY

This is a 1970 supplement to "Industrial Resources, Manchester, Kentucky" which was published in 1969.

### Population

	<u>1970</u>	<u>1960</u>
Manchester	1,633	1,868
Clay County	17,601	20,748
Labor Market Area (Includes Bell, Jackson, Knox, Laurel, Leslie, Owsley, Perry, and Clay Counties)	150,117	168,191

### General Employment Characteristics

<u>Industry</u>	<u>Employment 1969</u>	
	<u>Clay County</u>	<u>Labor Market Area</u>
TOTAL	3,100	31,000
Agricultural	600	3,700
Nonagricultural	2,500	27,300
Manufacturing	100	3,962
Trade & Services	532	8,110
Government	800	7,200

### Manufacturing Employment

<u>Type Industry</u>	<u>Clay County</u>			<u>Labor Market Area</u>		
	<u>1969</u>	<u>1959</u>	<u>%Change</u>	<u>1969</u>	<u>1959</u>	<u>%Change</u>
TOTAL	107	220	+ 51.4	4,076	2,400	+ 69.8
Food & kindred products	0	0	-	584	445	+ 31.2
Apparel, textiles, leather	0	0	-	1,279	264	+384.5
Lumber & furniture	69	217	- 68.2	1,041	1,492	- 30.2
Printing, publishing, paper	4	3	+ 33.3	363	50	+626.0
Chemicals, petroleum, coal, rubber	0	0	-	98	39	+151.3
Machinery & metal products	0	0	-	637	58	+998.3
Other	34			74	52	+ 42.3

There are presently 7 manufacturing firms in Clay County. Major firms, employment, and year started operations:

<u>Firms</u>	<u>Employment</u>	<u>Year Started Operations</u>
John C. Hacker & Sons	15	1947
Boone Boy Industries, Inc.	20	1964
Etowah Manufacturing Company of Kentucky	32	1968
Hale Lumber Company	13	N/A
Keith Lumber Company	13	1945

### Labor Organizations

There are no unions representing manufacturing workers in Clay County.

### Labor Supply

	<u>Clay County</u>			<u>Labor Market Area</u>		
	<u>Total</u>	<u>Male</u>	<u>Female</u>	<u>Total</u>	<u>Male</u>	<u>Female</u>
Current	2,217	842	1,375	18,840	7,984	10,856
Potential additions next five years	2,827	1,440	1,387	20,642	10,574	10,068

### Personal Income

Clay County, 1968: Total \$17,960,000; Per Capita \$818  
1959: Total \$12,261,000; Per Capita \$596

### Property Tax Rates

Property tax rates per \$100 of assessed valuation, 1969:

<u>Taxing Unit</u>	<u>Manchester</u>	<u>Clay County</u>
State	\$ .015	\$ .015
County	.211	.211
School	.439	.439
City	.300	
Total	\$ .965	\$ .665

### Education

The Clay County School System includes two high schools with standard rating, and eight elementary schools.

Vocational School: Clay County Extension Center

Courses offered: Appliance Repair, Auto Body Repair, Auto Mechanics, Carpentry, Drafting, Electricity, Welding, Secretarial

## Transportation

Trucking Service: Detherage Freight Lines, McDuffee Motor Freight, Inc.  
(Ellis Trucking)

Bus Service: None

Rail Service: Louisville & Nashville Railroad. Piggyback service is available at Richmond, 62 miles distant.

Air Service: Sky Airport; (Commercial) London-Corbin War Memorial Airport, 23 miles distant

## Power and Fuel

### Electric Distributors

Kentucky Utilities Company  
Jackson County RECC

### Natural Gas Distributor

### Specific Gravity

### Btu Per Cu. Ft.

Peoples Gas Company of Kentucky, Inc.

.66

1,150

## Water and Sewerage

Water: Daily treatment capacity - 500,000 gallons; average daily use - 189,000 gallons; maximum daily use - 250,000 gallons; storage capacity - 235,000 gallons; size distribution lines 6, 8, and 10 inches

Sewerage: Type treatment - primary and secondary, trickling filters, drying beds, chlorination; design capacity - 350,000 gallons per day; size of sewer mains - 8 to 10 inches

## Local Government

Police Protection: Number of law enforcement officers - 4 (city), 6 (county)

Fire Protection: Number of full-time firemen - 1; number of volunteer firemen - 30; American Insurance Association fire rating, City of Manchester, Class 7

## Health

Nearest general hospitals - (1) Oneida Mountain Hospital, (2) Red Bird Hospital; capacity of the hospitals - 75 beds; staff - 7 doctors and 28 registered nurses. Special personnel - 3 dentists and 3 licensed practical nurses

Other Local Facilities

Telephone: Kentucky Telephone Company

Postal: Class of post office - 2; mail received - once daily; dispatched - once daily

Public Library: Clay County Public Library; number of volumes - 9,592; annual circulation - 125,000

Financial Institutions

<u>Banks</u>	<u>Statement of Condition as of December 31, 1969</u>	
	<u>Assets</u>	<u>Deposits</u>
First State Bank	\$4,615,526.87	\$3,895,195.79
First National Bank	4,981,931.40	4,446,712.48

Recreation

Local: Kiwanis recreation park, softball, baseball, tennis, 2 drive-in theaters, swimming pool, and drag strip

Area: Cumberland Falls State Park, Pine Mountain State Park, Levi Jackson State Park

Industrial Sites

There are two industrial sites available near Manchester, with a total of 23 acres.

MANCHESTER INDUSTRIAL SITE

1969

## MANCHESTER INDUSTRIAL SITE

For further information concerning the following available industrial site, contact Glenn Combs, Clay County Development Association, Manchester, Kentucky, or the Kentucky Department of Commerce, Frankfort, Kentucky.

### SITE #1

ACREAGE AND TOPOGRAPHY: 8-acre graded site - part of a 35-acre plat.

LOCATION: One mile northwest of Manchester.

HIGHWAY ACCESS: One-half mile from U. S. 421 via paved county road; construction of access road onto site necessary.

ELECTRICITY: Kentucky Utilities Company.

WATER: Manchester Water & Sewer Company - 8-inch line one-half mile from site.

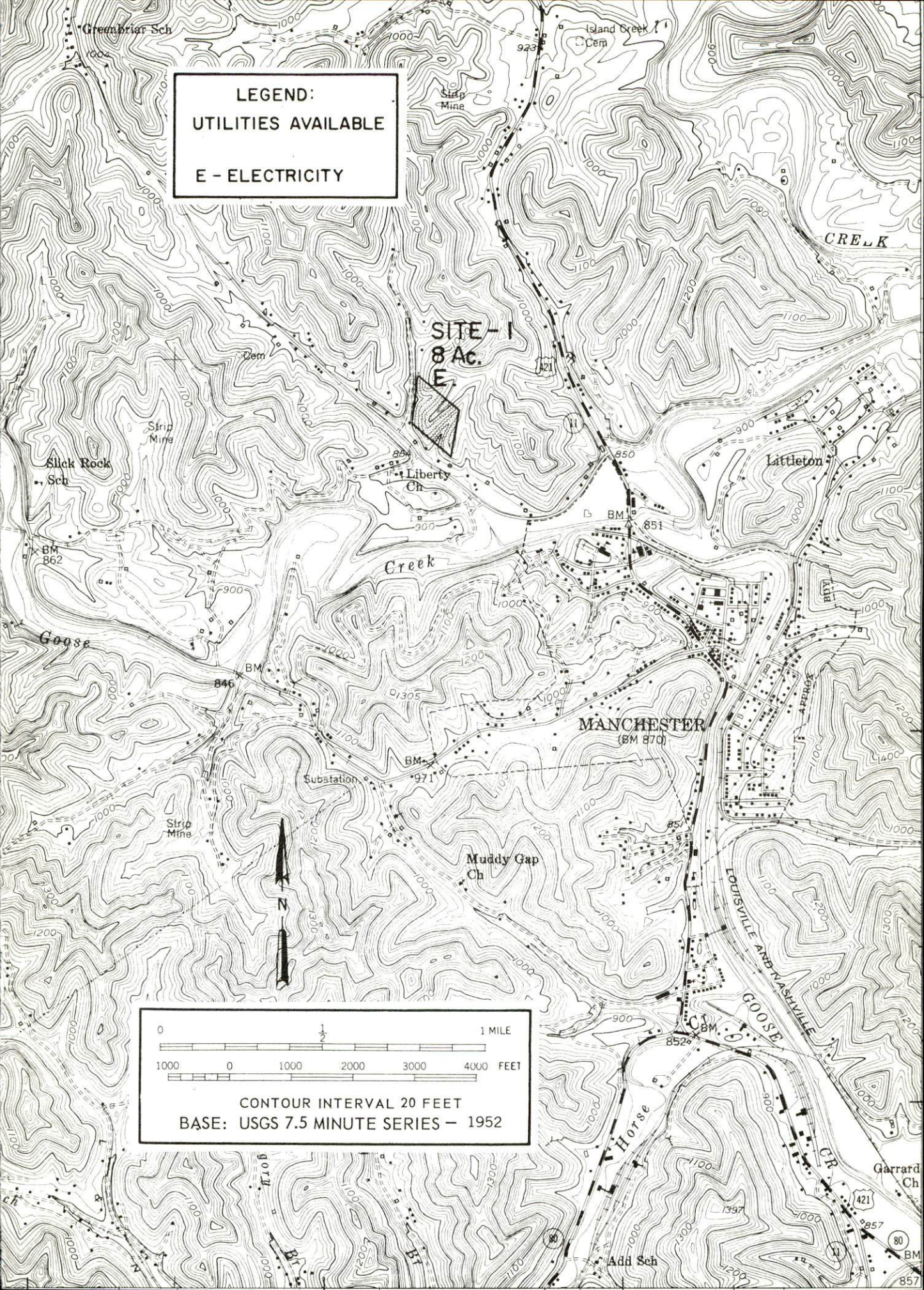
GAS: Peoples Gas Company - line approximately one-half mile from site.

SEWERAGE: Package plant necessary.

OWNERSHIP: Clay County Development Association.



**LEGEND:**  
**UTILITIES AVAILABLE**  
**E - ELECTRICITY**



0 1/2 1 MILE  
1000 0 1000 2000 3000 4000 FEET  
CONTOUR INTERVAL 20 FEET  
BASE: USGS 7.5 MINUTE SERIES - 1952

MANCHESTER INDUSTRIAL SITES

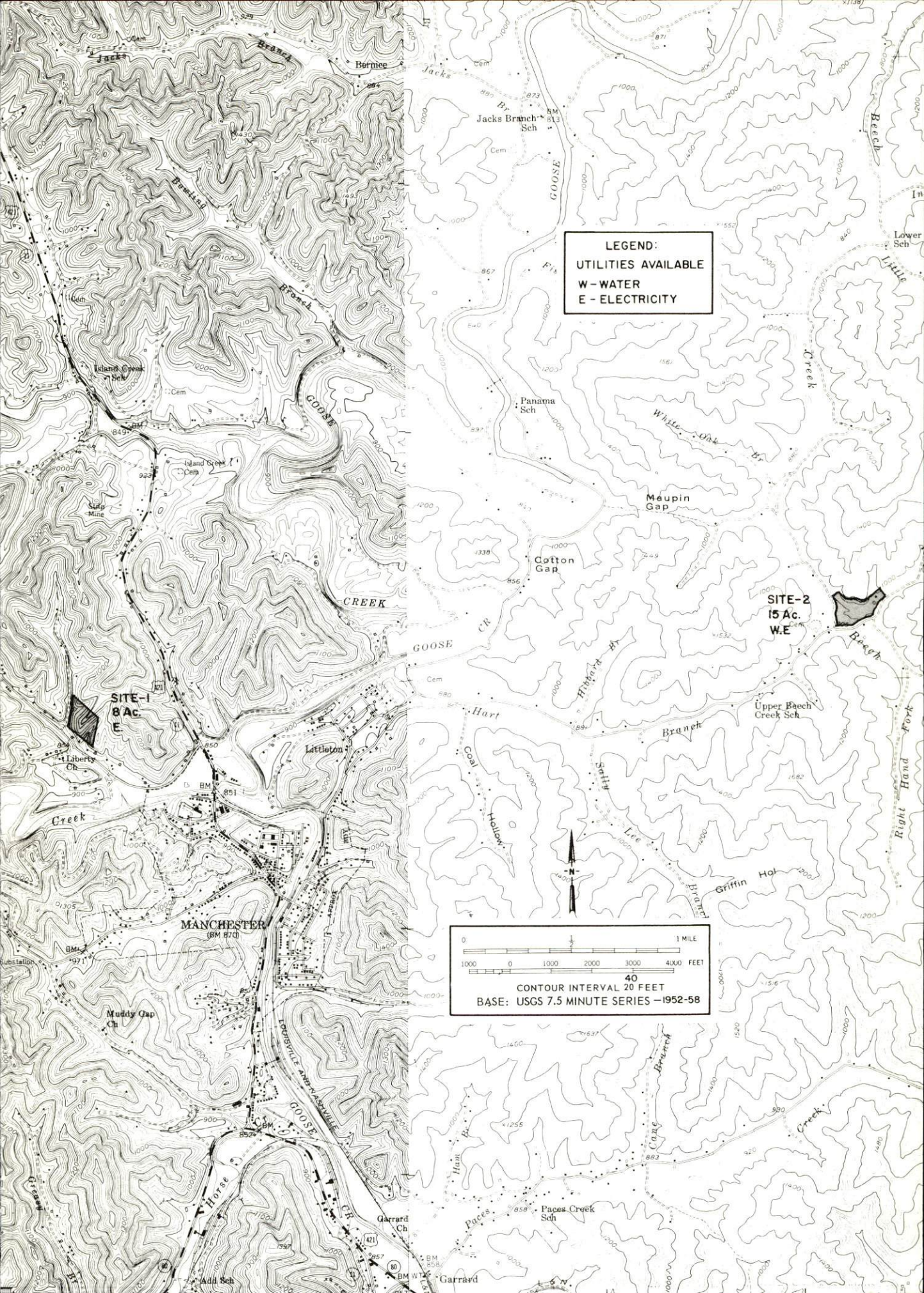
1970

## MANCHESTER INDUSTRIAL SITES

For further information concerning the following available industrial sites, contact Glenn Combs, Clay County Development Association, Manchester, Kentucky, or the Kentucky Department of Commerce, Frankfort, Kentucky.

SITE # 1: ACREAGE AND TOPOGRAPHY: 8-acre graded site - part of a 35-acre plat.  
LOCATION: One mile northwest of Manchester  
HIGHWAY ACCESS: One-half mile from U.S. 421 via paved county road; construction of access road onto site necessary.  
ELECTRICITY: Kentucky Utilities Company  
WATER: Manchester Water & Sewer Company - 8-inch line one-half mile from site.  
GAS: Peoples Gas Company - line approximately one-half mile from site.  
SEWERAGE: Package plant necessary.  
OWNERSHIP: Clay County Development Association

SITE # 2: ACREAGE AND TOPOGRAPHY: 15 acres of level to gently sloping land  
LOCATION: 3 miles northeast of Manchester on paved county road.  
HIGHWAY ACCESS: Fronts on county road  
RAILROADS: Louisville & Nashville Railroad, 4 miles distant.  
WATER: Manchester Municipal Water Works  
SIZE LINE: 8-inch, adjacent to site  
GAS: Petroleum Exploration Company  
SIZE MAIN: 6-inch, 3,000 feet distant  
ELECTRICITY: Jackson County RECC  
SEWERAGE: Package treatment plant required  
OWNERSHIP: City of Manchester



LEGEND:  
W - WATER  
E - ELECTRICITY

SITE-1  
8 AC.  
E

SITE-2  
15 AC.  
W.E.

0 1 MILE  
1000 0 1000 2000 3000 4000 FEET  
CONTOUR INTERVAL 20 FEET  
BASE: USGS 7.5 MINUTE SERIES - 1952-58

INDUSTRIAL RESOURCES  
MANCHESTER, KENTUCKY

Prepared by  
The Kentucky Department of Commerce  
in cooperation with  
Clay County Development Association

1969

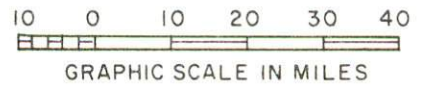
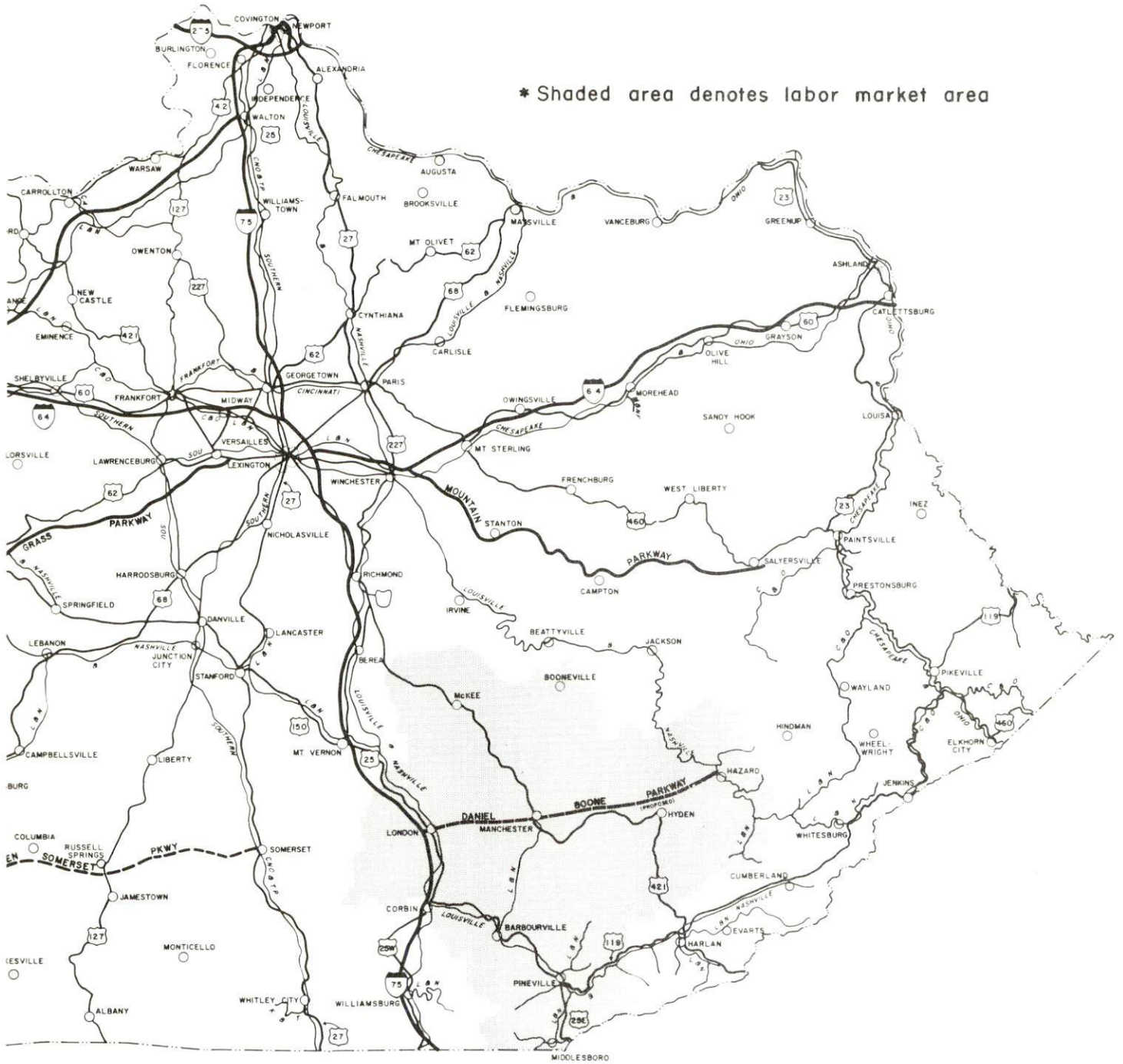
## TABLE OF CONTENTS

<u>Chapter</u>	<u>Page</u>
INDUSTRIAL SITES . . . . .	i
MANCHESTER, KENTUCKY - A RESOURCE PROFILE . . . . .	1
THE LABOR MARKET. . . . .	3
Population Trends . . . . .	3
General Employment Characteristics . . . . .	3
Manufacturing Employment Trends by Industry . . . . .	3
Clay County Manufacturing Firms, Their Products, and Employment . . . . .	4
Wage Rates for Selected Occupations . . . . .	5
Labor Organizations . . . . .	5
Current and Future Labor Supply. . . . .	6
Total Personal Income . . . . .	6
Per Capita Personal Income . . . . .	6
EDUCATION . . . . .	7
Public Schools . . . . .	7
Parochial, Private and Special Schools . . . . .	7
Vocational Schools . . . . .	9
Colleges and Universities . . . . .	9
TRANSPORTATION . . . . .	10
Rail . . . . .	10
Truck Service . . . . .	10
Air . . . . .	11
Bus . . . . .	11
Taxi . . . . .	11
Rental Services . . . . .	11
POWER AND FUEL . . . . .	12
Electricity . . . . .	12
Natural Gas . . . . .	12
WATER AND SEWERAGE . . . . .	14
Water. . . . .	14
Sewerage . . . . .	14

<u>Chapter</u>	<u>Page</u>
LOCAL GOVERNMENT . . . . .	.15
City. . . . .	.15
County. . . . .	.15
Assessed Value of Property - 1969 . . . . .	.15
Local General Property Tax Rates Per \$100 of Assessed Valuation - 1969 . . . . .	.15
Planning and Zoning. . . . .	.17
Safety . . . . .	.17
Police . . . . .	.17
Fire . . . . .	.17
Sanitation . . . . .	.17
HEALTH . . . . .	.18
Hospitals . . . . .	.18
Public Health. . . . .	.18
OTHER LOCAL FACILITIES . . . . .	.19
Communications . . . . .	.19
Library Services . . . . .	.19
Religious Institutions . . . . .	.21
Financial Institutions . . . . .	.21
Hotels and Motels . . . . .	.21
Clubs and Organizations . . . . .	.21
RECREATION . . . . .	.22
Local . . . . .	.22
Area . . . . .	.22
AGRICULTURE - NATURAL RESOURCES - CLIMATE . . . . .	.23
Agriculture . . . . .	.23
Natural Resources . . . . .	.23
Climate . . . . .	.23
HISTORY . . . . .	.24

# MANCHESTER LABOR MARKET AREA

\* Shaded area denotes labor market area





## MANCHESTER, KENTUCKY - A RESOURCE PROFILE

### Location

Manchester, the county seat of Clay County, is located in the beautiful old Cumberland Mountains of southeast Kentucky. It is 168 miles southeast of Louisville, Kentucky, 176 miles south of Cincinnati, Ohio, and 132 miles north of Knoxville, Tennessee.

Population in Manchester in 1960 was 1,868, a continuance of the steady growth it has shown since 1900. Clay County has shown a declining trend in population since 1950. The 1969 estimate of population of Clay County is 20,900.

### The Economic Framework

In Clay County total employment in 1968 averaged 3,280, of which 2,650 were non-agricultural jobs. Major segments of the total employment were agriculture (630), trade and services (525), government (900), and manufacturing (75).

Per capita income in Clay County has shown an increase of 58.5 percent since 1959.

Area employment for Clay County and the seven adjoining counties totals 30,175, with manufacturing representing 3,450 of that total, a 44.9 percent increase during the past ten years. Agriculture (4,100), trade and services (6,375), and government (6,350), give balance to the area's total employment.

### Resources For Growth

A current labor supply of 8,190 men and 10,890 women are available for industrial jobs in the Clay County labor market area. The adequate highway transportation in the market area would make commuting feasible. Potentially, 10,560 boys and 10,200 girls will supplement the current labor supply by 1975 as they become 18 years of age and available for work.

Transportation facilities are good in and around Clay County. The Daniel Boone Parkway will serve Manchester and will connect with I-75, 23 miles from Manchester. Rail service is provided by the Louisville & Nashville Railroad. Commercial air service can be found at London, 25 miles from Manchester.

Electric power is abundant with both Kentucky Utilities Company and Jackson County RECC serving Clay County. Peoples Gas Company of Kentucky, Inc. , provides Manchester with natural gas service.

Higher educational facilities are in nearby Barbourville, Williamsburg, and Berea, with vocational training schools located in Manchester and Harlan.

#### Community Programs For Improvement

Manchester and Clay County have undertaken many and varied improvement programs. New water treatment and sewage treatment plants were put into operation in 1965 - completion of three elementary schools in the county - Kentucky Telephone Company recently extended lines and cables in the Manchester area - plans are being considered for a new municipal building - a 35-unit low-rent housing project completed and 100 more units planned - a 9-hole golf course is under consideration - a privately owned drag strip recently completed - a recreation center with complete indoor and outdoor recreational facilities is planned - a state vocational extension center was completed in 1968 - new hospital construction to start in early 1970 - new administrative building for the Clay County School completed - library purchased the building which it had rented - planning of paving local airport - remodeling of county courthouse planned.

#### Recreation, Entertainment and Livability

Manchester is located close to three of Kentucky's fine state parks: Cumberland Falls State Park, 58 miles distant, Pine Mountain State Park, 35 miles, and Levi Jackson State Park, 23 miles distant. The parks offer full recreational facilities.

Manchester has two drive-in movie theaters and a Kiwanis recreation park. Softball, baseball, and tennis are provided at the park.

A privately-owned swimming pool and drag strip also provide public entertainment.

Numerous state parks are within driving distance of Manchester, providing complete facilities for swimming, picnicking, and horseback riding.

## THE LABOR MARKET

### POPULATION TRENDS <sup>1/</sup>

Area	1969 (Est.)	1960	1950	Percent Change	
				1960-69	1950-60
Labor Market Area	138,900	168,191	209,452	-17.9	-19.2
Clay County	20,900	20,748	23,116	+ 0.7	- 5.9
Manchester	NA	1,868	1,706	--	+ 9.5

### GENERAL EMPLOYMENT CHARACTERISTICS <sup>2/</sup>

Major Employment Group	1968	1968
	Clay County	Labor Market Area
TOTAL	3,288	30,178
Agricultural	634	4,113
Nonagricultural	2,654	26,065
Manufacturing	75	3,453
Trade and Services	523	6,379
Government	901	6,354
Other	1,155	9,879

### MANUFACTURING EMPLOYMENT TRENDS BY INDUSTRY SEPTEMBER 1959 AND 1968 <sup>3/</sup>

Industry	Clay County			Labor Market Area		
	1968	1959	% Change	1968	1959	% Change
TOTAL	75	220	-65.9	3,453	2,395	+ 44.1
Food & Kindred Products	0	0	-	568	445	+ 27.6
Apparel, Textiles, Leather	0	0	-	1,170	264	+343.3
Lumber & Furniture	71	217	-67.3	961	1,492	- 35.6
Printing, Publishing, Paper	4	3	+33.3	74	50	+ 48.0
Machinery & Metal Products	0	0	-	521	58	+798.3
Other	0	0	-	159	86	+ 84.9

CLAY COUNTY MANUFACTURING FIRMS,  
THEIR PRODUCTS, AND EMPLOYMENT <sup>4/</sup>

Firm	Product	Employment		
		Total	Male	Female
<u>Garrard</u>				
John C. Hacker & Sons	Lumber	15	15	0
<u>Manchester</u>				
Boone Boy Industries, Inc.	Upholstered furniture	20	8	12
Clay County Furniture Mfg. Co., Inc.	Upholstered furniture	8	3	5
Etowah Manufacturing Company of Kentucky	Safety device for artillery shell	20		
Hale Lumber Company	Lumber	13	13	0
Keith Lumber Company	Rough lumber	13	13	0
The Manchester Enterprise	Newspaper, job printing	4	3	1

WAGE RATES FOR SELECTED OCCUPATIONS  
MANCHESTER, KENTUCKY 5/

<u>Classification</u>	<u>Starting</u>	<u>Maximum</u>	<u>Prevailing</u>
<u>Production Employees</u>			
Assembler	\$1.60	\$1.75	\$1.60
Drill Press Operator	1.60		1.60
Inspector	1.60		1.60
Machinist, Set Up	2.00		2.00
Production Laborer	1.60	1.80	1.60
Punch Press Operator	1.60		1.60
Sprayer or Painter	1.60		1.60
<u>Service Employees</u>			
Carpenter	\$2.00	\$3.50	\$2.75
Electrician	2.50	4.25	3.50
Janitor	1.60	1.75	1.60
Laborer	1.60	1.70	1.60
Mechanic, Maintenance	2.25	3.00	2.60
Truck Driver	1.60	3.00	1.90
<u>Office Employees</u>			
Bookkeeper or Accounting Clerk	\$1.60	\$3.00	\$2.00
File Clerk	1.60	1.75	1.60
Receptionist	1.60	1.80	1.70
Secretary	1.60	2.10	1.80
Stenographer	1.60	2.10	1.80
Tabulating Machine Operator	1.60	2.00	1.80
Typist	1.60	1.90	1.65

LABOR ORGANIZATIONS

There are no unions representing manufacturing workers in Clay County.

CURRENT AND FUTURE LABOR SUPPLY -  
MANCHESTER LABOR MARKET AREA

County	1969			Future Labor Supply by 1975 <sup>7/</sup> (Becoming 18 Years of Age)		
	Total	Male	Female	Total	Male	Female
Labor Market Area	19,082	8,193	10,889	20,767	10,568	10,199
Clay	2,247	866	1,381	2,804	1,429	1,375
Bell	3,690	1,488	2,202	4,089	2,085	2,004
Jackson	1,645	729	916	1,265	669	596
Knox	2,668	1,166	1,502	2,863	1,408	1,455
Laurel	2,663	1,012	1,651	2,829	1,434	1,395
Leslie	1,562	734	828	1,701	841	860
Owsley	1,401	923	478	577	269	308
Perry	3,206	1,275	1,931	4,639	2,433	2,206

TOTAL PERSONAL INCOME <sup>8/</sup>

Area	1968	1959	% Change
Clay County	\$ 19,656,000	\$ 12,261,000	+60.3
Labor Market Area	208,198,000	131,990,000	+57.7
Kentucky	8,360,000,000	4,655,000,000	+79.6

PER CAPITA PERSONAL INCOME <sup>9/</sup>

Area	1968	1959	% Change
Clay County	\$940	\$593	+58.5
Labor Market Area	\$901 to 1,498	\$526 to 1,089	+71.3 to +37.6
Kentucky	\$2,614	\$1,552	+68.4

## EDUCATION

### Public Schools

	<u>Clay County</u>
Total Enrollment	5,560
Elementary	4,298
High School	1,262
Student-Teacher Ratio	24-1
Elementary	23-1
High School	27-1
State Rating of High School	Standard
Percent High School Graduates to College	30.9
Current Expenditures Per Pupil	\$331.38
Bonded Indebtedness	None

### Parochial, Private and Special Schools

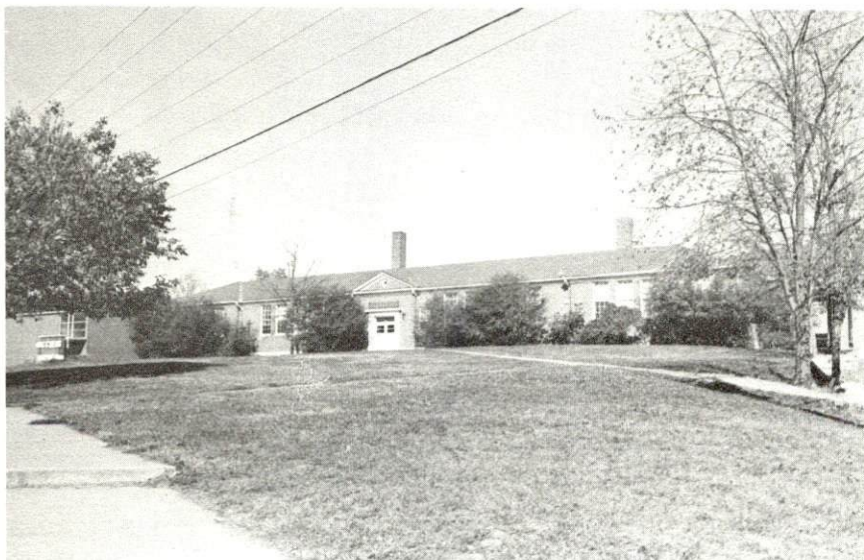
	<u>Oneida Baptist Institute</u>	<u>Oneida Seventh Day Adventist</u>
Total Enrollment	182	13
High School	182	13
Student-Teacher Ratio	13-1	6-1
High School	13-1	6-1



HACKER  
ELEMENTARY  
SCHOOL



HORSE CREEK  
ELEMENTARY  
SCHOOL



CLAY COUNTY  
HIGH SCHOOL



Vocational Schools

	<u>Nearest Area School</u>	<u>Nearest Extension Center</u>
Location	Harlan, Kentucky	Manchester, Kentucky
Miles Distant	64 miles	
Curriculum	Practical nursing Electronics (technology) Auto body repair Auto mechanics Carpentry Drafting Electricity Machine shop Mine machinery mechanics Welding	Appliance repair Auto body repair Auto mechanics Carpentry Drafting Electricity Welding Sécretarial

Colleges and Universities

<u>Name</u>	<u>Area - Within 75 Miles</u>		<u>Highest Degree Conferred</u>
	<u>Location</u>	<u>Enrollment</u>	
Sue Bennett Jr. College	London	321	Associate
Union College	Barbourville	888	Masters
Cumberland College	Williamsburg	1,771	Baccalaureate
Lees Junior College	Jackson	386	Associate
Berea College	Berea	1,391	Baccalaureate

## TRANSPORTATION

### Rail

Lines Serving - Louisville & Nashville Railroad

Services - Freight, REA Express pickup and delivery

RAILWAY TRANSIT TIME FROM MANCHESTER, KENTUCKY, TO: 10/

City	No. of Days		City	No. of Days	
	CL			CL	
Atlanta, Ga.	2		Los Angeles, Calif.	7	
Birmingham, Ala.	4		Louisville, Ky.	2	
Chicago, Ill.	4		Nashville, Tenn.	3	
Cincinnati, Ohio	2		New Orleans, La.	3	
Cleveland, Ohio	4		New York, N. Y.	5	
Detroit, Mich.	4		Pittsburgh, Pa.	5	
Knoxville, Tenn.	1		St. Louis, Mo.	4	

### Truck Service

#### Company

Detherage Freight Line  
Ellis Trucking Co., Inc.

#### Home Office

Somerset, Kentucky  
Indianapolis, Ind.

HIGHWAY MILES AND TRUCK TRANSIT TIME IN DAYS FROM  
MANCHESTER, KENTUCKY, TO SELECTED MARKET CENTERS

City	Highway Miles	Delivery		City	Highway Miles	Delivery	
		Time <u>11/</u> TL	TL			Time TL	TL
Atlanta, Ga.	308	2		Los Angeles, Calif.	2,256	8	
Birmingham, Ala.	274	4		Louisville, Ky.	168	2	
Chicago, Ill.	465	4		Nashville, Tenn.	265	3	
Cincinnati, Ohio	176	2		New Orleans, La.	831	4	
Cleveland, Ohio	438	4		New York, N. Y.	828	5	
Detroit, Mich.	434	4		Pittsburgh, Pa.	444	5	
Knoxville, Tenn.	132	1		St. Louis, Mo.	464	4	

Air

	<u>Local</u>	<u>Nearest Commercial</u>
Location:	Sky Airport (private) Manchester	London-Corbin War Memorial Airport London
Runways:	1 - turf	1 - paved
Length:	2,350 ft.	6,000 ft.
Traffic		
Control:	Wind sock	Wind sock
Lighting:	None	Beacon, runway, obstruction
Services:	80 octane	80 and 100 octane, JP-A-50, Piedmont Airlines, taxi, U-Drive-It, Weather Bureau, flight training, charter and ambulance service, vending machines

Bus           None

Taxi           12 to 15-hour service daily

Rental Services   London, Kentucky, 23 miles distant

## POWER AND FUEL

### Electricity

Company serving Manchester - Kentucky Utilities Company

Source of power - Kentucky Utilities Company

Total generating capacity - 740,000 KW

Industrial rates furnished by - Kentucky Utilities Company,  
Lexington, Kentucky

Company serving Clay County - Jackson County RECC

Source of power - East Kentucky Power Cooperative

Total generating capacity - 515,000 KW

Industrial rates furnished by - East Kentucky Power Cooperative,  
Winchester, Kentucky

### Natural Gas

Company serving - Peoples Gas Company of Kentucky, Inc.

Source of supply - Petroleum Exploration Company

Size of transmission lines - 4 and 6 inches

Distribution lines - 1 and 3 inches

BTU content - 1,150; Specific gravity - .66

Distribution pressure - 30 to 35 psi

### Industrial Rates:

Industrial Rate for Natural Gas-Interruptible Service\*

Monthly Rates: Summer Rate (six months, May through October)

First 1,000 cu. ft. or fraction thereof for \$550.00 (minimum)

Next 1,000 cu. ft. .54¢ per M cu. ft.

All over 2,000 cu. ft. .52¢ per M cu. ft.

Winter Rate (six months, November through April)

First 1,000 cu. ft. or fraction thereof for \$700.00 (minimum)

Next 1,000 cu. ft. .65¢ per M cu. ft.

All over 2,000 cu. ft. .64¢ per M cu. ft.

Minimums must be guaranteed for twelve consecutive months.

Carry-over and summation not permissible in computing number of minimums, i. e., each industrial customer constitutes a minimum each month.

---

\*The Utility shall have the right to curtail deliveries of gas hereunder whenever, and to the extent necessary, in its sole judgement, the protection of service to its other customers may require.

The minimums for service first begun after the beginning of a month may be prorated for such month.

Note: Available only to those industrial customers who agree to be liable for the specified minimums for at least twelve consecutive months, and who agree to take their entire natural gas requirements from Peoples Gas Company of Kentucky. This agreement shall be in writing.

Other terms and conditions the same as for general customers.

## WATER AND SEWERAGE

### Water

Company serving - Manchester Water & Sewer Company  
Source - Bert T. Combs Lake  
Treatment plant capacity - 500,000 gpd  
Average daily consumption - 189,000 gallons  
Peak daily consumption - 250,000 gallons  
Type treatment - flocculation, sedimentation, filtration, chlorination  
Storage capacity - 235,000 gallons  
Average pressure - 85 psi  
Average temperature - 60 to 65° F.  
Size mains - 6, 8, 10 inches

#### MONTHLY WATER RATES FOR WHOLESALE AND INDUSTRIAL CONSUMERS

---

First	2,000 gallons	\$1.50 per M gallons
Next	8,000 gallons	.80 per M gallons
Next	10,000 gallons	.70 per M gallons
Next	20,000 gallons	.60 per M gallons
All over	40,000 gallons	.55 per M gallons

Surface water sources - South Fork of the Kentucky River  
Average discharge - 1,014 cfs  
Expected ground water yield - 5 to 50 gpm  
Yield along main streams - 50 to 200 gpm

### Sewerage

Company serving - Manchester Water & Sewer Company  
Design capacity - 350,000 gpd  
Average daily flow - 160,000 gallons  
Treatment - primary and secondary  
Type treatment - trickling filters, drying beds, chlorination of effluent  
Treated effluent discharged into: Goose Creek  
Size of sanitary mains - 8 to 10 inches  
Size of storm mains - 30 inches  
Rates - 50 percent of water bill

## LOCAL GOVERNMENT

### City

Structure - Mayor - 4-year term; 6 councilmen - 2-year terms  
 Budget 1968 - General Fund \$55,132  
 Fees and licenses - Business licenses \$5 to \$150 annually

### County

Structure - county judge - 4-year term; 4 magistrates - 4-year terms  
 Budget 1968-69 - General Fund \$103,578

### Assessed Value of Property - 1969

<u>Classes of Property*</u>	<u>Manchester</u>	<u>Clay County</u>
Real Estate and Tangibles	\$5,991,800	--
Real Estate	--	\$22,316,400
Tangibles	--	7,299,847
Public Service	684,698	6,334,775

### Local General Property Tax Rates Per \$100 of Assessed Valuation - 1969

<u>Taxing Unit**</u>	<u>Manchester</u>	<u>Clay County</u>
State	\$ .015	\$ .015
County	.211	.211
School	.439	.439
City	.300	
Total	\$ .965	\$ .665

\*Property assessed at 100 percent of fair value.

\*\*Manufacturing machinery, raw materials inventories and goods in process inventories are not subject to local tax. State rate is only \$0.15 per \$100.



CLAY COUNTY  
COURTHOUSE



CLAY COUNTY BOARD  
OF EDUCATION



Planning and Zoning

Agency - Manchester Planning Commission  
Plans completed - Zoning Ordinance, Subdivision Regulations,  
Comprehensive Plan

Safety

<u>Police</u>	<u>Manchester</u>	<u>Clay County</u>
Total staff	4	6
Radio-patrol cars	1	6
Other equipment	Standard	Standard

<u>Fire</u>	<u>Manchester</u>
American Insurance Association Fire Rating	7
Full-time staff	1
Volunteers	30
Equipment: 750 gpm pumpers	2

Sanitation

	<u>Manchester</u>	<u>Clay County</u>
Type service	Private contractor	Private contractor
Cost	Negotiated	Negotiated
Collection frequency	Twice weekly	Twice weekly
Disposal method	Land fill	Land fill

## HEALTH

### Hospitals

	<u>Number</u>	<u>Beds</u>
General hospitals	2	75
General hospital facilities - 3 emergency rooms, 2 operating rooms, X-ray, pediatrics		
Medical staff - 7 practicing physicians, 3 dentists, 28 registered nurses, 3 licensed practical nurses		

### Public Health

Facility - Clay County Health Department

Staff - Part-time

Full-time

1 health officer	7 registered nurses
1 health program coordinator	5 clerks
1 nursing supervisor	1 sanitarian
1 nutritionist	4 home health aides
1 health educator	

Budget 1969-70 - \$135,000

## OTHER LOCAL FACILITIES

### Communications

Telephone - Kentucky Telephone Company  
Services - all standard services

Telegraph - Western Union  
Services - office and telephone

Postal - Class-2 U. S. Post Office  
Mail received - once daily  
Mail dispatched - once daily

Newspaper Dailies - Lexington and Louisville, Kentucky; Knoxville,  
Tennessee

Radio - WWXL-AM and FM  
Hours of operation AM - 5:30 a. m. to 10:15 p. m.

Television - no local station  
Reception by cable from Knoxville and Johnson City, Tennessee;  
Bristol, Virginia; Asheville, North Carolina; Lexington, Kentucky

### Library Services

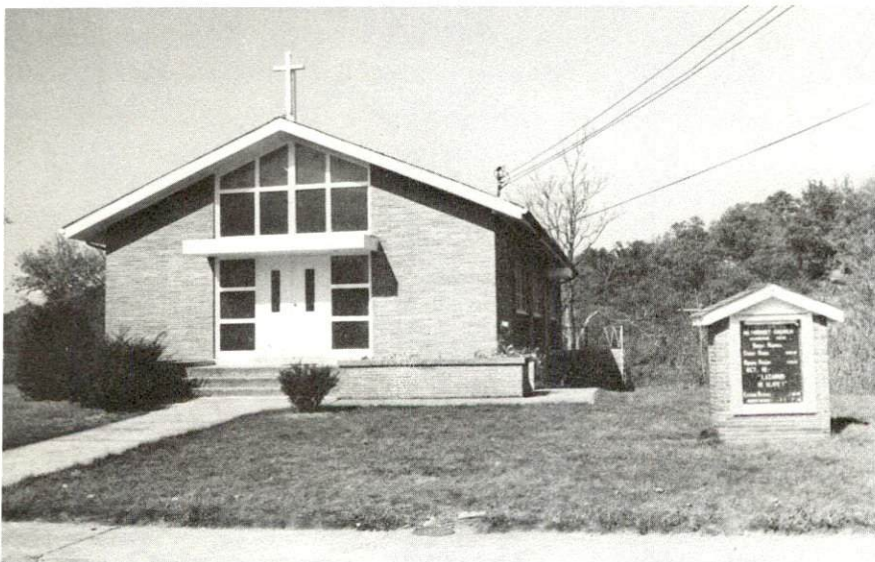
Public Libraries - Clay County Public Library  
Size collection - 9,592  
Circulation, 1968 - 125,000  
Services - bookmobile, records, films, magazines



MANCHESTER  
CHRISTIAN  
CHURCH



MANCHESTER  
BAPTIST  
CHURCH



MANCHESTER  
METHODIST  
CHURCH

Religious Institutions

Number of churches - 11

Denominations - Baptist, Christian, Church of God, Methodist,  
Pentecostal, Presbyterian, Seventh Day Adventist, Mennonite, Catholic

Financial Insitutions

<u>Bank</u>	<u>Statement as of December 31, 1968</u>	
	<u>Assets</u>	<u>Deposits</u>
First National Bank	\$4,275,143.60	\$3,794,182.21
First State Bank	4,201,520.68	3,582,476.79

Hotels and Motels

<u>Name</u>	<u>Units</u>
Royal Hotel	15
Cozy Motel	32

Clubs and Organizations

Business and Civic - Jaycees, Kiwanis, Ministerial Association,  
Red Cross, Clay County Development Association

Fraternal - Medical Society, American Legion, Masonic Lodge, VFW

Women's - Federated Women's Club, Younger Women's Club

Youth - Little League, Boy Scouts, Brownies, Girl Scouts

Other - Manchester Mental Health and Mental Retardation Association,  
Jackson-Clay Community Action Agency, Fish and Game Club,  
Fox Hunter Club

## RECREATION

### Local

#### Public Recreation Facilities

Supervised program - during summer months

Parks - 1

Playgrounds - school playgrounds

Swimming pools - 1

Tennis courts - 1

Baseball diamonds - 1

#### Private Recreation Facilities

Swimming pools - 1

Movie theaters - 1 drive-in theater

### Area (within 75 miles)

#### Tourist Attractions

Levi Jackson State Park

Cumberland Falls State Park

Pine Mountain State Park

Buckhorn Lake

#### Cultural Events

The Book of Job, a choral drama, at Pine Mountain State Park

Mountain Laurel Festival, at Pine Mountain State Park

## AGRICULTURE - NATURAL RESOURCES - CLIMATE

### Agriculture 12/

	<u>Clay County</u>	<u>Labor Market Area</u>
Total land area (acres)	303,360	1,889,280
Percent of area in farm land	43.2	32.1
Number of farms	1,325	7,357
Average size of farms (acres)	98.8	82.5
1964 value of all farm products	\$1,534,934	\$12,638,981
Value per farm	2,055	1,718
Total crop sales	1,146,210	5,786,135
Total livestock and livestock products	388,724	3,592,107
1967 agricultural production included:		
Burley tobacco (lbs.)	2,400,000	10,850,000
Corn (bu.)	220,000	1,082,000
Cattle and calves (number)	7,000	48,800
Hogs and pigs (number)	3,700	17,800
Milk production (1966) (lbs.)	6,750,000	62,000,000

### Natural Resources

Principal mineral resources	Coal and natural gas
Other mineral resources	Petroleum and clay
Acres of commercial forest land	247,200
Most abundant tree species	Red oak, white oak, hickory, yellow poplar, yellow pine, beech and soft maple

### Climate 13/

	<u>Clay County</u>
Temperature	
Annual mean (30-year record)	59.6 degrees
Average annual (1968)	57.3 degrees
Record highest (Aug. 1968) (8-year record)	99.0 degrees
Record lowest (Jan. 1966) 8-year record)	- 9.0 degrees
Mean annual degree-days (30-year record)	3,494
Precipitation	
Mean annual total (30-year record)	45.85 inches
Mean annual snow and sleet (26-year record)	12.3 inches
Total precipitation (1968)	35.76 inches
Mean No. days precipitation (26-year record) (.01 inches or more)	126
Average No. days thunderstorms (26-year record)	48
Prevailing winds (14-year record)	Northeast

## HISTORY

Clay County, the forty-seventh county formed in Kentucky, dates from 1806. Its territory was taken from Floyd, Knox, and Madison Counties. In turn, parts of its territory were taken to help form Perry, Laurel, Breathitt, Owsley, Jackson, and Leslie Counties. Clay County has 474 square miles of territory, well over the average for the state. Red Bird Creek forms a part of its southeastern boundary line that flows north to join with Goose Creek, where they form the South Fork of Kentucky River. Clay County's surface is hilly and mountainous. It has abundant natural resources of coal, iron, and timber. Salt was the leading export item for many years.

Clay County contains a rock formation, known as Town Rocks, which has a number of underground alleys in it. This formation was used by the people to hide valuables, livestock, and slaves during the Civil War period. The Burning Springs Community is the site of a natural flow of gas that burned with a steady flame for many years after its discovery in 1798. The flame has since been extinguished, and the gas is piped to Lexington and other places for domestic use.

The first settler in Clay County was James Collins. He was the first white man to make salt in the area. James Garrard, the second Governor of Kentucky, successfully developed salt wells commercially in the area.

The county was named for General Green Clay, a Virginian, who migrated to Kentucky during his youth. His father, Charles Clay, was descended from John Clay, a British Grenadier, who accompanied his majesty's troops to Virginia during rebellion in the 1670's. Young Clay became a delegate to the Virginia Legislature before Kentucky separated from Virginia, helped write Kentucky's second Constitution, and served in the Kentucky Legislature for several years.

Manchester, the county seat, is 860 feet above sea level. It was named for Manchester, the great manufacturing center in England. Early in the History of Clay County, Manchester became the leading trading center. Its inaccessibility during the early decades caused dissatisfaction among the county residents which resulted in the formation of several other counties.

The most important citizens of Clay County have been members of the Garrard and White families. James Garrard was the only person who was elected to two Gubernatorial terms in succession. Charles H. White, a county judge, is a direct descendant of the original White family in Clay County. Bert T. Combs, Governor of Kentucky from 1959 to 1963 and now a United States District County Judge, was born in Clay County.



## SOURCES OF INFORMATION

- 1/ U.S. Department of Commerce, Bureau of the Census, Census of Population, 1950, 1960. Department of Rural Sociology, University of Kentucky, Kentucky County Provisional Population Estimates: January 1, 1969.
- 2/ Kentucky Department of Economic Security, Division of Research and Statistics.
- 3/ Kentucky Department of Economic Security, Number of Workers in Manufacturing Industries Covered by Kentucky Unemployment Insurance Law Classified by Industry and County, September 1959, September 1968.
- 4/ Kentucky Department of Commerce, 1969 Kentucky Directory of Manufacturers.
- 5/ Kentucky Department of Economic Security, Division of Employment Service, Corbin Office.
- 6/ Kentucky Department of Economic Security, Kentucky Labor Supply Estimates by County, January 1969.
- 7/ Kentucky Department of Commerce, Future Labor Supply by 1975.
- 8/ University of Kentucky, Office of Development Services and Business Research, Total Personal Income For Kentucky.
- 9/ University of Kentucky, Office of Development Services and Business Research, Per Capita Income in Kentucky.
- 10/ Louisville & Nashville Railroad Company, Louisville, Kentucky.
- 11/ Ellis Trucking Company, Inc., Indianapolis, Indiana.
- 12/ U.S. Department of Commerce, Bureau of the Census, Census of Agriculture, 1964. U.S. Department of Agriculture, Statistical Reporting Service, and Kentucky Department of Agriculture, Division of Markets, Kentucky Agricultural Statistics, 1968.
- 13/ U.S. Department of Commerce, Environmental Science Services Administration, Climatological Data, 1967.

All other information was obtained from governmental offices, local businesses and organizations.

This copy has been prepared by the Kentucky Department of Commerce,  
Division of Research and Planning, and the cost of printing paid from  
state funds.