

1970

Industrial Resources: Green County - Greensburg

Kentucky Library Research Collections
Western Kentucky University, spcol@wku.edu

Follow this and additional works at: https://digitalcommons.wku.edu/green_cty

 Part of the [Business Administration, Management, and Operations Commons](#), [Growth and Development Commons](#), and the [Infrastructure Commons](#)

Recommended Citation

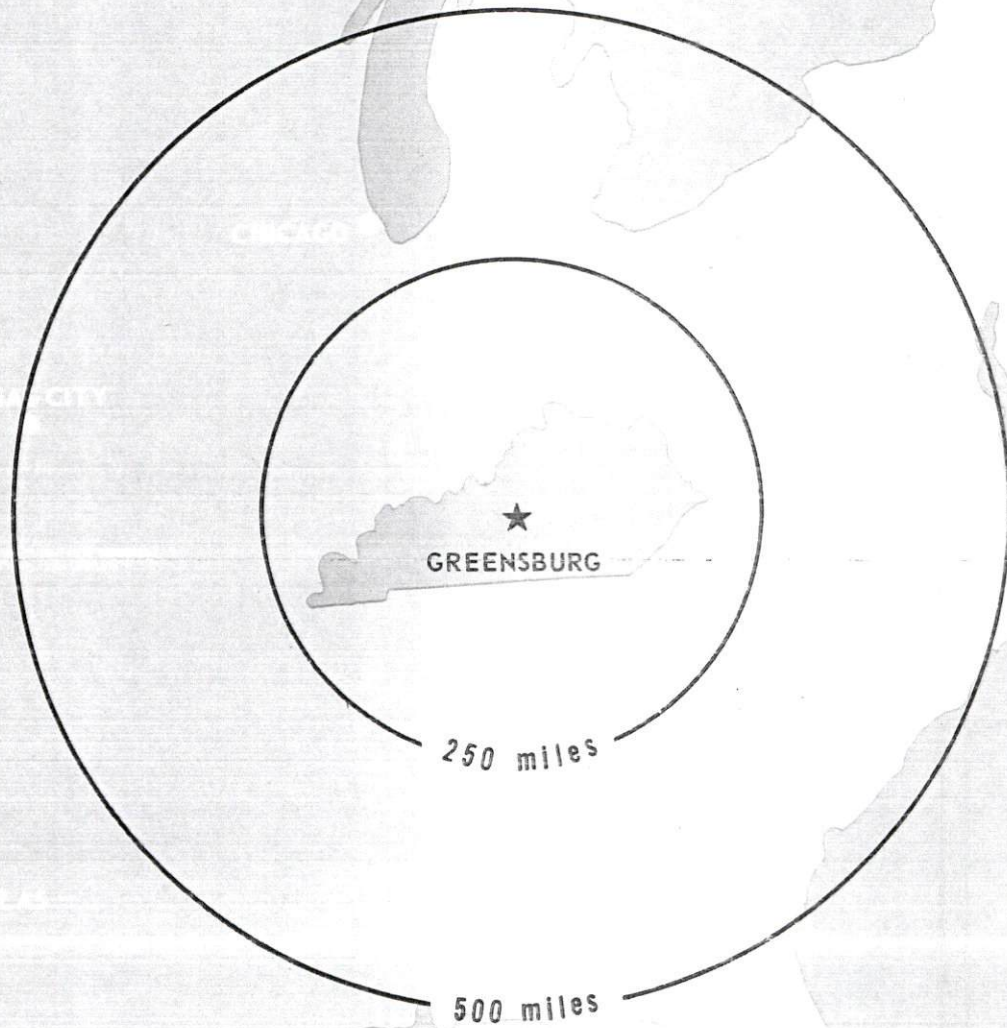
Kentucky Library Research Collections, "Industrial Resources: Green County - Greensburg" (1970). *Green County*. Paper 12.
https://digitalcommons.wku.edu/green_cty/12

This Report is brought to you for free and open access by TopSCHOLAR®. It has been accepted for inclusion in Green County by an authorized administrator of TopSCHOLAR®. For more information, please contact topscholar@wku.edu.

INDUSTRIAL RESOURCES

GREENSBURG

KENTUCKY



GREENSBURG - SUMMERSVILLE INDUSTRIAL SITES

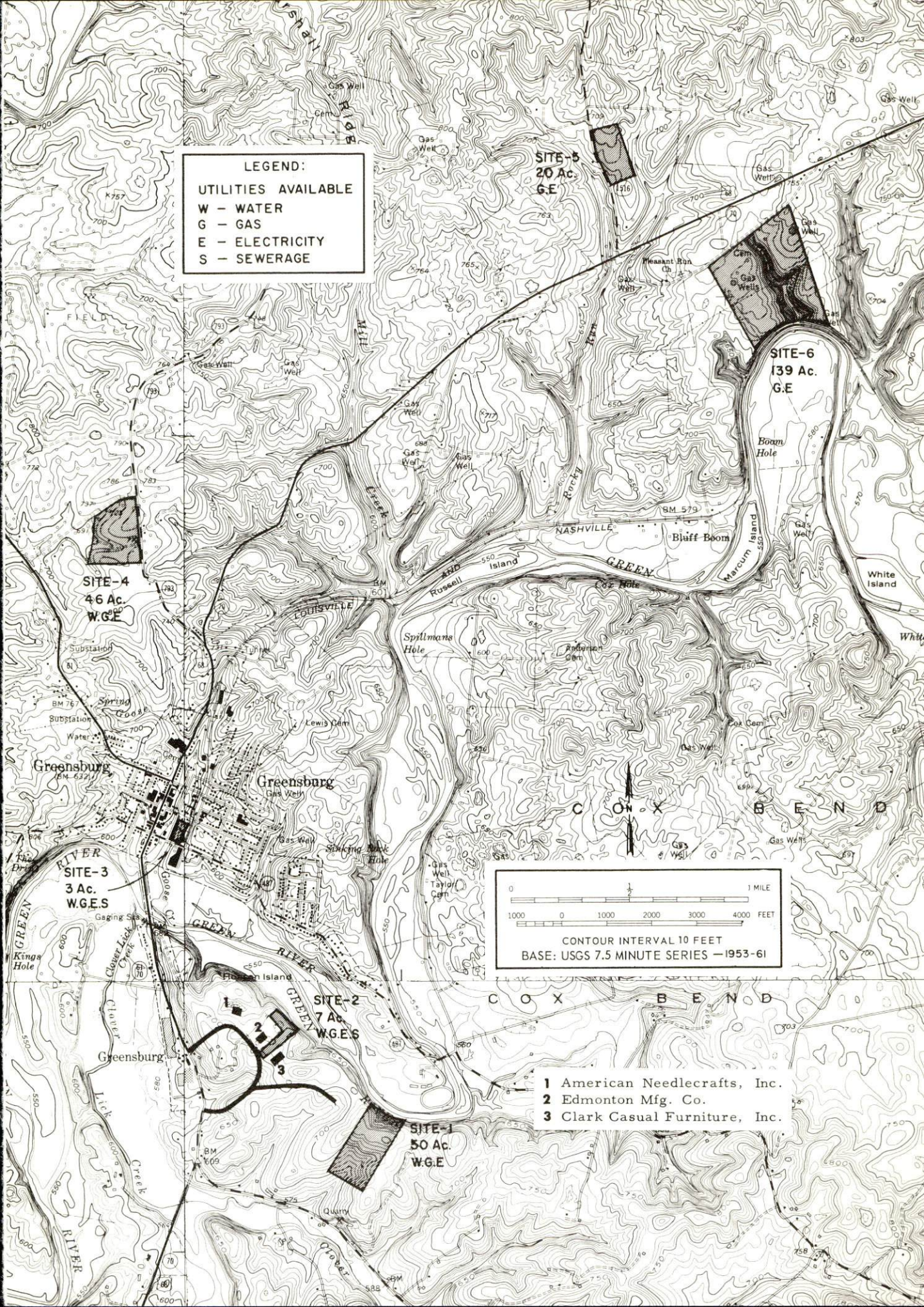
1970

GREENSBURG-SUMMERSVILLE INDUSTRIAL SITES
1970

For additional information concerning the following sites, contact H. H. Durham, Peoples Bank, Greensburg, Kentucky; George Gupton, Kentucky Utilities Company, Greensburg, Kentucky; or the Kentucky Department of Commerce, Frankfort, Kentucky.

- SITE #1:** ACREAGE AND TOPOGRAPHY: 50 acres, slightly rolling to very rolling
LOCATION: Edge of southeast Greensburg city limits
ZONING: None
HIGHWAY ACCESS: Presently there is no access road directly to site; paved city street serving subdivision within approximately 600 feet
RAILROADS: Not rail served
WATER: Greensburg Water Works
SIZE LINE: 8-inch
GAS: Western Kentucky Gas Company
ELECTRICITY: Kentucky Utilities Company and Taylor County RECC
SEWERAGE: Plans are being made to run sewer mains to subdivision just northwest of site.
OPTIONED BY: Green County Industrial Foundation
- SITE #2:** ACREAGE AND TOPOGRAPHY: 7 acres, level to very gently rolling
LOCATION: Within the southern boundary of Greensburg city limits
ZONING: Industrial
HIGHWAY ACCESS: Paved access road to U. S. 68, approximately 200 yards east of site
RAILROADS: Not rail served
WATER: Greensburg Water Works
SIZE LINE: 8-inch main on southern portion of property
GAS: Western Kentucky Gas Company
SIZE LINE: 2-inch
ELECTRICITY: Taylor County RECC
SEWERAGE: Municipal service - 8-inch main on southern portion of property
OPTIONED BY: Green County Industrial Foundation
- SITE #3:** ACREAGE AND TOPOGRAPHY: 3 acres, level
LOCATION: In city limits
ZONING: Commercial
HIGHWAY ACCESS: On Water Street - city maintained
RAILROADS: Louisville & Nashville Railroad
WATER: Greensburg Water Works
SIZE LINE: 8-inch line adjoins property.
GAS: Western Kentucky Gas Company
SIZE LINE: 3-inch main adjoins property.
ELECTRICITY: Kentucky Utilities Company
SEWERAGE: Municipal service - main adjoins property
OPTIONED BY: Green County Industrial Foundation
- SITE #4:** ACREAGE AND TOPOGRAPHY: 46 acres, level to rolling
LOCATION: Approximately one-half mile north of Greensburg
ZONING: Industrial
HIGHWAY ACCESS: Fronts on Marshall Ridge Road (Kentucky 793), approximately 3,000 feet to U.S. 68
RAILROADS: Not rail served
WATER: Green-Taylor Water District
SIZE LINE: 6-inch
GAS: Western Kentucky Gas Company
SIZE LINE: 2-inch
ELECTRICITY: Taylor County RECC
SEWERAGE: Package plant necessary
OWNERSHIP: Green County Industrial Foundation
- SITE #5:** ACREAGE AND TOPOGRAPHY: 20 acres, level to gently rolling
LOCATION: Approximately 2 miles northeast of Greensburg
ZONING: None
HIGHWAY ACCESS: Four-tenths mile off U.S. 68 on state-maintained highway
RAILROADS: Not rail served
WATER: Green-Taylor Water District
SIZE LINE: 8-inch line within approximately 1,500 feet
GAS: Western Kentucky Gas Company
ELECTRICITY: Taylor County RECC
SEWERAGE: Package plant necessary
OPTIONED BY: Green County Industrial Foundation
- SITE #6:** ACREAGE AND TOPOGRAPHY: 139 acres, level to very rolling
LOCATION: 2.3 miles east of Greensburg
ZONING: None
HIGHWAY ACCESS: Access road off U.S. 68
RAILROADS: Louisville & Nashville Railroad
WATER: Green-Taylor Water District
SIZE LINE: 8-inch line within 1,000 feet
GAS: Western Kentucky Gas Company
ELECTRICITY: Kentucky Utilities Company
SEWERAGE: Package plant necessary
OPTIONED BY: Green County Industrial Foundation
- SITE #7:** ACREAGE AND TOPOGRAPHY: 80 acres, level to rolling
LOCATION: Summersville, 5 miles northwest of Greensburg
ZONING: Industrial
HIGHWAY ACCESS: Fronts on Kentucky 61
RAILROADS: Not rail served
WATER: Green-Taylor Water District
SIZE LINE: 8-inch line adjoins site
GAS: Western Kentucky Gas Company
SIZE LINE: 4-inch line adjoins site.
ELECTRICITY: Taylor County RECC
SEWERAGE: Package plant necessary
OPTIONED BY: Green County Industrial Foundation
- SITE #8:** ACREAGE AND TOPOGRAPHY: 50 acres, level to rolling
LOCATION: Summersville, 5 miles northwest of Greensburg
ZONING: Industrial
HIGHWAY ACCESS: Fronts on Kentucky 323
RAILROADS: Not rail served
WATER: Green-Taylor Water District
SIZE LINE: 6-inch line within 800 feet
GAS: Western Kentucky Gas Company
SIZE LINE: 3-inch
ELECTRICITY: Taylor County RECC
SEWERAGE: Package plant necessary
OPTIONED BY: Green County Industrial Foundation
- SITE #9:** ACREAGE AND TOPOGRAPHY: 70 acres, level to very gently rolling
LOCATION: Northwest of Summersville, approximately 6 miles from Greensburg
ZONING: Industrial
HIGHWAY ACCESS: Fronts on Kentucky 61
RAILROADS: Not rail served
WATER: Green-Taylor Water District
SIZE LINE: 8-inch
GAS: Western Kentucky Gas Company
SIZE LINE: 4-inch main within 200 feet
ELECTRICITY: Taylor County RECC
SEWERAGE: Package plant necessary
OPTIONED BY: Green County Industrial Foundation

LEGEND:
UTILITIES AVAILABLE
W - WATER
G - GAS
E - ELECTRICITY
S - SEWERAGE



SITE-4
46 Ac.
W.G.E.

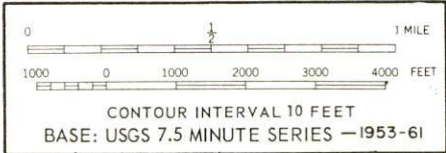
SITE-5
20 Ac.
G.E.

SITE-6
139 Ac.
G.E.

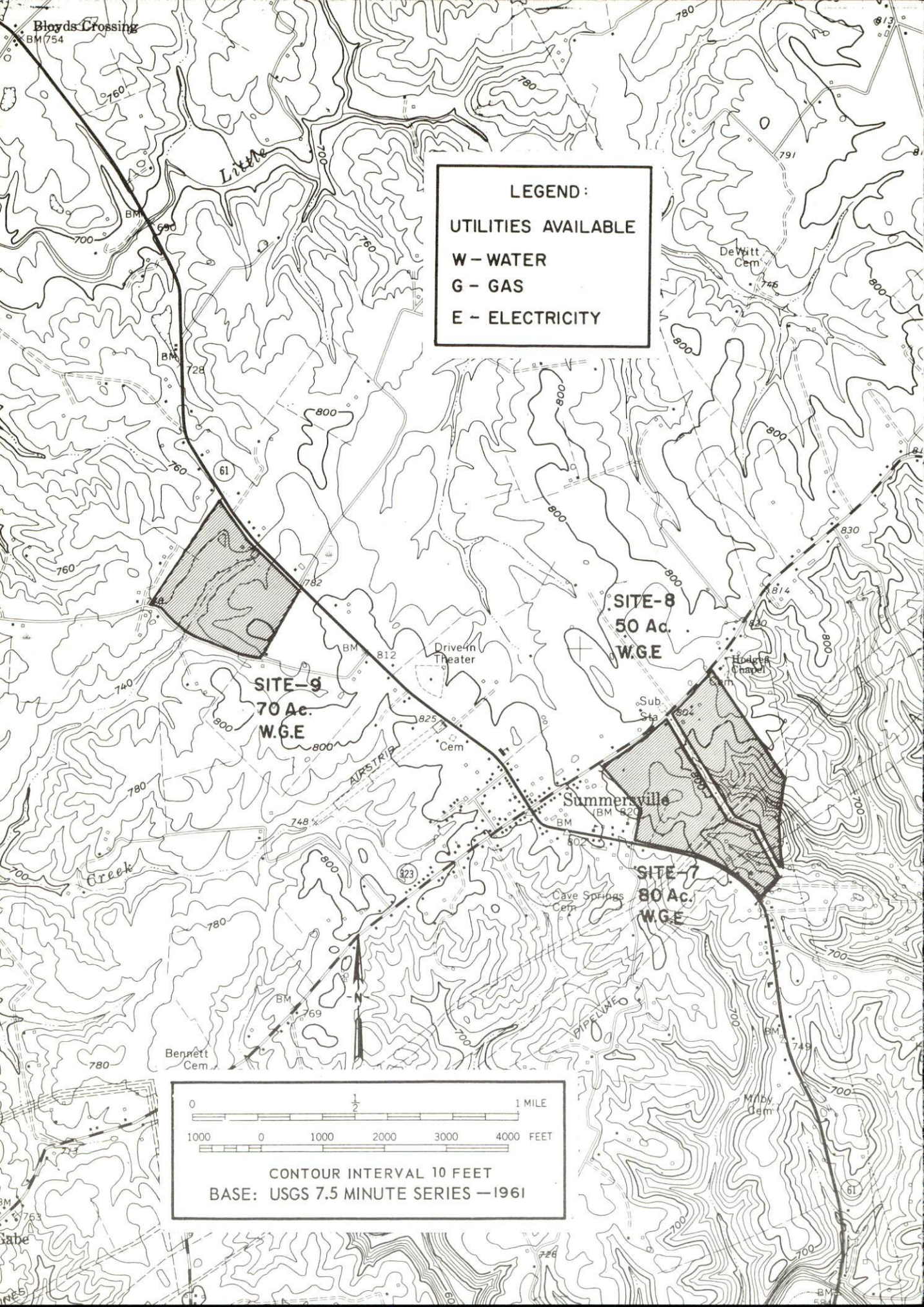
SITE-3
3 Ac.
W.G.E.S.

SITE-2
7 Ac.
W.G.E.S.

SITE-1
50 Ac.
W.G.E.



- 1** American Needlecrafts, Inc.
- 2** Edmonton Mfg. Co.
- 3** Clark Casual Furniture, Inc.

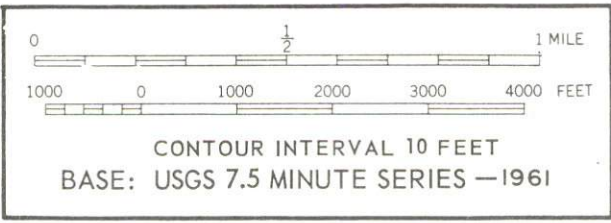


LEGEND:
UTILITIES AVAILABLE
W - WATER
G - GAS
E - ELECTRICITY

SITE-9
70 Ac.
W.G.E.

SITE-8
50 Ac.
W.G.E.

SITE-7
80 Ac.
W.G.E.



GREENSBURG-SUMMERSVILLE INDUSTRIAL SITES

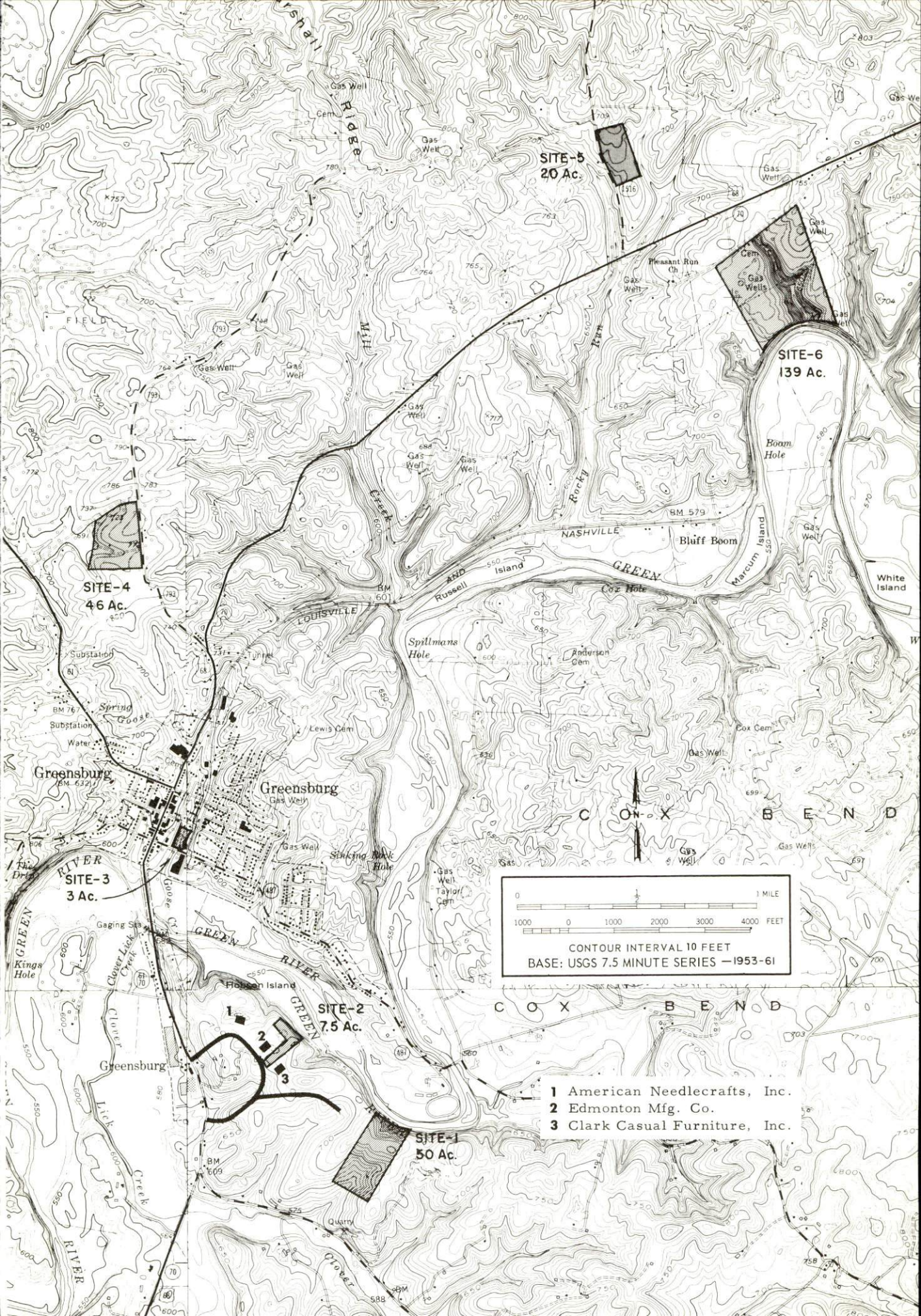
1971

GREENSBURG-SUMMERSVILLE INDUSTRIAL SITES

1971

For more information about the following sites, contact Mr. Sam Moore, Chairman, Industrial Committee, Greensburg-Green County Chamber of Commerce, Greensburg, Kentucky; or the Kentucky Department of Commerce, Washington and Wapping Streets, Frankfort, Kentucky.

- SITE #1: ACREAGE: 50 acres
 LOCATION: Edge of southeast Greensburg city limits
 ZONING: None
 HIGHWAY ACCESS: Presently there is no access road directly to site; paved city street serving subdivision within approximately 600 feet.
 RAILROAD: Not rail served
 WATER: Greensburg Water Works
 SIZE LINE: 8-inch
 GAS: Western Kentucky Gas Company
 ELECTRICITY: Kentucky Utilities Company and Taylor County RECC
 SEWERAGE: Plans are being made to run sewer mains to subdivision just northwest of site.
 OPTIONED BY: Green County Industrial Foundation
- SITE #2: ACREAGE: 7.5 acres
 LOCATION: Within the southern boundary of Greensburg city limits
 ZONING: Industrial
 HIGHWAY ACCESS: Paved access road to U.S. 68 approximately 200 yards east of site
 RAILROAD: Not rail served
 WATER: Greensburg Water Works
 SIZE LINE: 8-inch line on southern portion of property
 GAS: Western Kentucky Gas Company
 SIZE MAIN: 4-inch
 ELECTRICITY: Taylor County RECC
 SEWERAGE: Municipal Service; 10-inch main on southern portion of property
 OPTIONED BY: Green County Industrial Foundation
- SITE #3: ACREAGE: 3 acres
 LOCATION: Within city limits of Greensburg
 ZONING: Commercial
 HIGHWAY ACCESS: On Water Street - city maintained
 RAILROAD: Louisville & Nashville Railroad
 WATER: Greensburg Water Works
 SIZE LINE: 8-inch line adjoins property.
 GAS: Western Kentucky Gas Company
 SIZE MAIN: 3-inch main adjoins property.
 ELECTRICITY: Kentucky Utilities Company
 SEWERAGE: Municipal Service; main adjoins property.
 OPTIONED BY: Green County Industrial Foundation
- SITE #4: ACREAGE: 46 acres
 LOCATION: Approximately one-half mile north of Greensburg
 ZONING: Industrial
 HIGHWAY ACCESS: Fronts on Marshall Ridge Road (Kentucky 793) approximately 3,000 feet to U.S. 68
 RAILROAD: Not rail served
 WATER: Green-Taylor Water District
 SIZE LINE: 8-inch line on site
 GAS: Western Kentucky Gas Company
 SIZE MAIN: 2-inch
 ELECTRICITY: Taylor County RECC
 SEWERAGE: Package plant necessary
 OWNERSHIP: Green County Industrial Foundation
- SITE #5: ACREAGE: 20 acres
 LOCATION: Approximately 2 miles northeast of Greensburg
 ZONING: None
 HIGHWAY ACCESS: Four-tenths mile off U.S. 68 on state maintained highway
 RAILROAD: Not rail served
 WATER: Green-Taylor Water District
 SIZE LINE: 8-inch line within approximately 1,500 feet
 GAS: Western Kentucky Gas Company
 ELECTRICITY: Taylor County RECC
 SEWERAGE: Package plant necessary
 OPTIONED BY: Green County Industrial Foundation
- SITE #6: ACREAGE: 139 acres
 LOCATION: 2.3 miles east of Greensburg
 ZONING: None
 HIGHWAY ACCESS: Access road off U.S. 68
 RAILROAD: Louisville & Nashville Railroad
 WATER: Green-Taylor Water District
 SIZE LINE: 8-inch line within 1,000 feet
 GAS: Western Kentucky Gas Company
 ELECTRICITY: Kentucky Utilities Company
 SEWERAGE: Package plant necessary
 OPTIONED BY: Green County Industrial Foundation
- SITE #7: ACREAGE: 80 acres
 LOCATION: Summersville, 5 miles northwest of Greensburg
 ZONING: None
 HIGHWAY ACCESS: Fronts on Kentucky 61
 RAILROAD: Not rail served
 WATER: Green-Taylor Water District
 SIZE LINE: 8-inch line adjoins site.
 GAS: Western Kentucky Gas Company
 SIZE MAIN: 6-inch main adjoins site
 ELECTRICITY: Taylor County RECC
 SEWERAGE: Package plant necessary
 OPTIONED BY: Green County Industrial Foundation
- SITE #8: ACREAGE: 50 acres
 LOCATION: Summersville, 5 miles northwest of Greensburg
 ZONING: Industrial
 HIGHWAY ACCESS: Fronts on Kentucky 323
 RAILROAD: Not rail served
 WATER: Green-Taylor Water District
 SIZE LINE: 6-inch line within 800 feet
 GAS: Western Kentucky Gas Company
 SIZE MAIN: 3-inch
 ELECTRICITY: Taylor County RECC
 SEWERAGE: Package plant necessary
 OPTIONED BY: Green County Industrial Foundation
- SITE #9: ACREAGE: 70 acres
 LOCATION: Northwest of Summersville, approximately 6 miles from Greensburg
 ZONING: Industrial
 HIGHWAY ACCESS: Fronts on Kentucky 61
 RAILROAD: Not rail served
 WATER: Green-Taylor Water District
 SIZE LINE: 8-inch
 GAS: Western Kentucky Gas Company
 SIZE MAIN: 4-inch main within 200 feet
 ELECTRICITY: Taylor County RECC
 SEWERAGE: Package plant necessary
 OPTIONED BY: Green County Industrial Foundation



SITE-5
20 Ac.

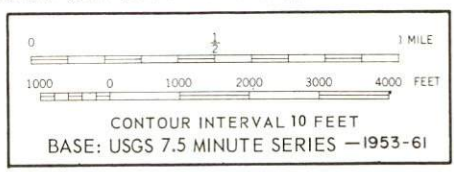
SITE-6
139 Ac.

SITE-4
46 Ac.

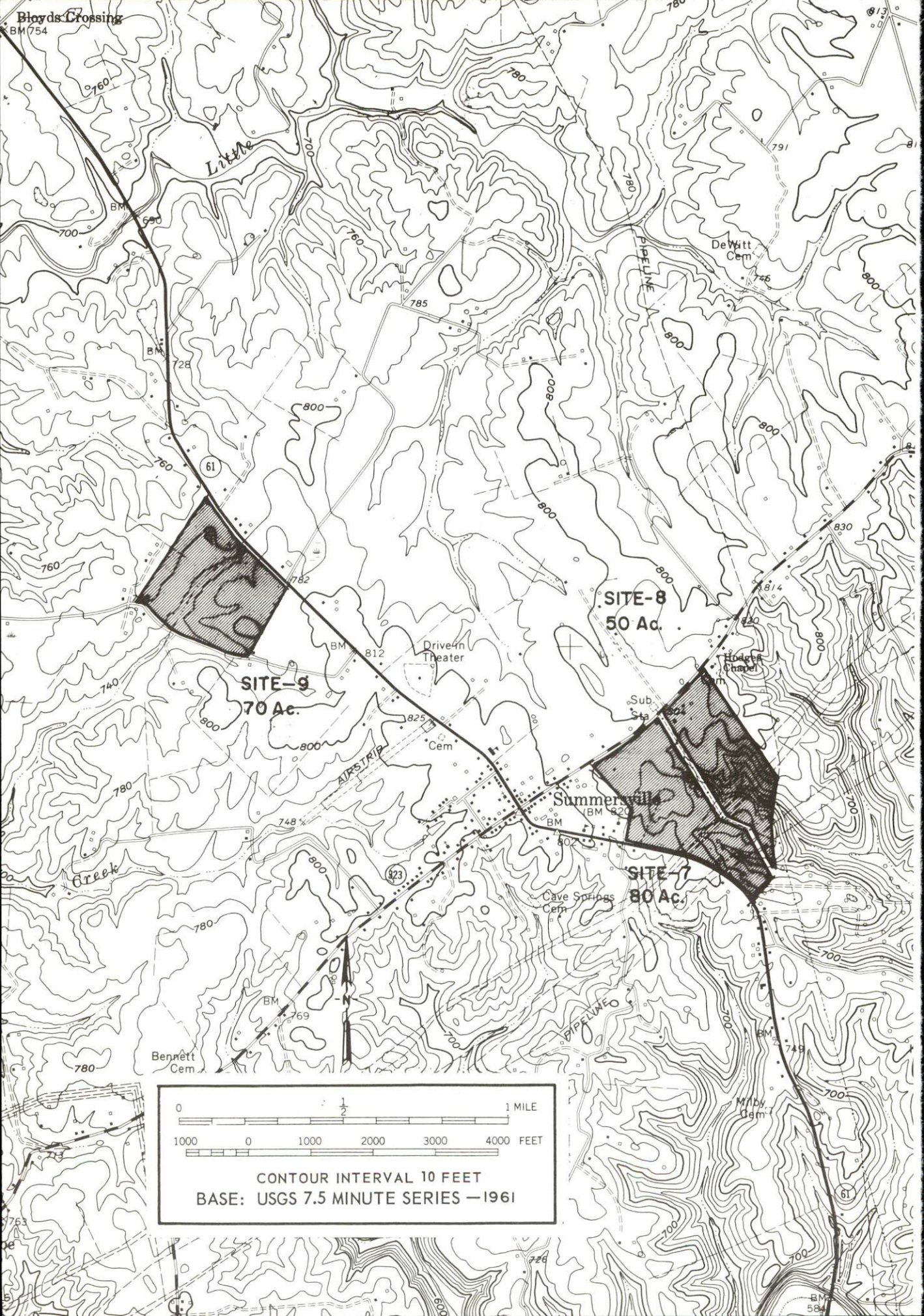
SITE-3
3 Ac.

SITE-2
7.5 Ac.

SITE-1
50 Ac.



- 1 American Needlecrafts, Inc.
- 2 Edmonton Mfg. Co.
- 3 Clark Casual Furniture, Inc.



Boyd's Crossing
BM 754

Little
Creek

DeWitt
Cem

SITE-9
70 Ac.

SITE-8
50 Ac.

Summerville
BM 820

SITE-7
80 Ac.

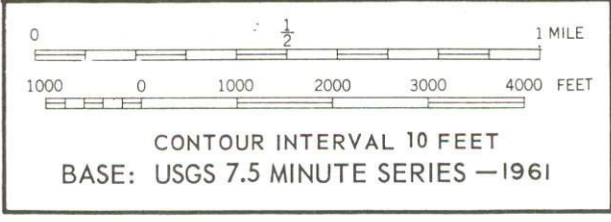
AIRSTRIP

PIPELINE

Bennett
Cem

Cave Springs
Cem

Milby
Cem



CURRENT INDUSTRIAL RESOURCES

CURRENT INDUSTRIAL RESOURCES, GREENSBURG, KENTUCKY

This is a 1971 supplement to "Industrial Resources, Greensburg, Kentucky" which was published in 1970.

Population

	<u>1970</u>	<u>1960</u>
Greensburg	1,990	2,334
Green County	10,350	11,249
Labor Market Area	73,354	75,065

(Includes Green, Adair, Hart, Larue, Metcalfe, and Taylor Counties.)

General Employment Characteristics

<u>Industry</u>	<u>Employment 1969</u>	
	<u>Green County</u>	<u>Labor Market Area</u>
TOTAL	3,500	26,400
Agricultural	1,500	8,200
Nonagricultural	2,000	18,200
Manufacturing	400	5,351
Trades and Services	366	3,834
Government	300	2,200

Manufacturing Employment

<u>Type Industry</u>	<u>Green County</u>			<u>Labor Market Area</u>		
	<u>1970</u>	<u>1960</u>	<u>% Change</u>	<u>1970</u>	<u>1960</u>	<u>% Change</u>
TOTAL	443	127	248.8	5,303	3,090	71.6
Food & kindred products	33	35	- 5.7	278	350	-20.6
Apparel, textiles, leather	230	0	--	4,162	2,203	88.9
Lumber & furniture	105	89	18.0	365	462	-21.0
Stone, clay & glass	14	3	366.7	29	26	11.5
Primary metals	58	0	--	145	0	--
Machinery & metal products	0	0	--	253	0	--
Other	3	0	--	71	49	44.9

There are presently 14 manufacturing firms in Green County.
Major firms, employment, and year started operations:

<u>Firms</u>	<u>Employment</u>	<u>Year Started Operations</u>
American Needlecrafts, Inc.	140	1945
Clark Casual Furniture, Inc.	95	1960
Edmonton Manufacturing Company	85	1964
Greensburg Bottling Company	27	1927
Greensburg Manufacturing Company	50	1968
Tennessee Gas Pipeline Company	52	1951

Labor Supply

	<u>Green County</u>			<u>Labor Market Area</u>		
	<u>Total</u>	<u>Male</u>	<u>Female</u>	<u>Total</u>	<u>Male</u>	<u>Female</u>
Current	677	433	244	6,091	3,515	2,576
Potential additions next five years	1,167	609	558	8,589	4,400	4,189

Personal Income

Green County, 1969: Total - \$25,218,000; Per Capita - \$2,390
1959: Total - \$12,201,000; Per Capita - \$1,116

Education

The Green County School System includes 1 high school with a standard rating, and 5 elementary schools.

Nearest Vocational School: Green County Extension Center, Greensburg
Courses offered: General Clerical, Secretarial-Steno, Health Careers, Auto Mechanics, Carpentry, Electricity.

Power and Fuel

Electric Distributors

Kentucky Utilities Company
Taylor County RECC

Source of Supply

Kentucky Utilities Company
East Kentucky Power Cooperative

Natural Gas Distributor

Western Kentucky Gas Company

Specific Gravity

.58 to .60

Btu Per Cu. Ft.

1,020

Water and Sewerage

Water: Greensburg Water Works - Daily treatment capacity - 796,000 gallons; average daily use - 297,900 gallons; maximum daily use - 441,500 gallons; storage capacity - 500,000 gallons; size distribution lines - 2, 6, and 8 inches.

Green-Taylor Water District - Source of supply - Greensburg Water Works - Can purchase any amount needed; storage capacity - 160,000 gallons; size distribution lines - 3, 4, and 6 inches.

Sewerage: Type treatment - aeration, clarifier, chlorination; design capacity - 1,500,000 gallons per day or a population of 4,000; size of sewer mains - 8 and 10 inches.

Local Government

Property Tax Rates

Property tax rates per \$100 of assessed valuation, 1970:

	<u>Greensburg</u>	<u>Green County</u>
State	\$.015	\$.015
County	.192	.192
School	.506	.506
City	.220	
Total	\$.933	\$.713

Police Protection: Number of law enforcement officers - 4 (city); 4 (county)

Fire Protection: Number of volunteer firemen - 24; American Insurance Association fire rating, City of Greensburg, Class 7.

Industrial Sites

There are 9 sites, ranging from 3 to 139 acres, available for industrial use in Greensburg. Three of the sites are located at Summersville, approximately 5 miles northwest of Greensburg.

INDUSTRIAL RESOURCES
GREENSBURG, KENTUCKY

Prepared by
The Kentucky Department of Commerce
in cooperation with
The Greensburg-Green County Chamber of Commerce
1970

This copy has been prepared by the Kentucky Department of Commerce,
Division of Research and Planning, and the cost of printing paid from
state funds.

TABLE OF CONTENTS

<u>Chapter</u>	<u>Page</u>
INDUSTRIAL SITES	i
GREENSBURG, KENTUCKY - A RESOURCE PROFILE	1
THE LABOR MARKET	4
Population Trends	4
General Employment Characteristics	4
Manufacturing Employment Trends by Industry.	4
Greensburg Manufacturing Firms, Their Products, and Employment.	5
Wage Rates for Selected Occupations	5
Labor Organizations	7
Current and Future Labor Supply	7
Total Personal Income	8
Per Capita Personal Income	8
EDUCATION	9
Public Schools	9
Vocational Schools	9
Colleges and Universities	10
TRANSPORTATION	11
Rail	11
Truck Service	11
Air	12
Bus	12
Taxi.	12
POWER AND FUEL	13
Electricity	13
Natural Gas	13
WATER AND SEWERAGE	14
Water	14
Sewerage	15

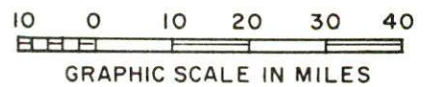
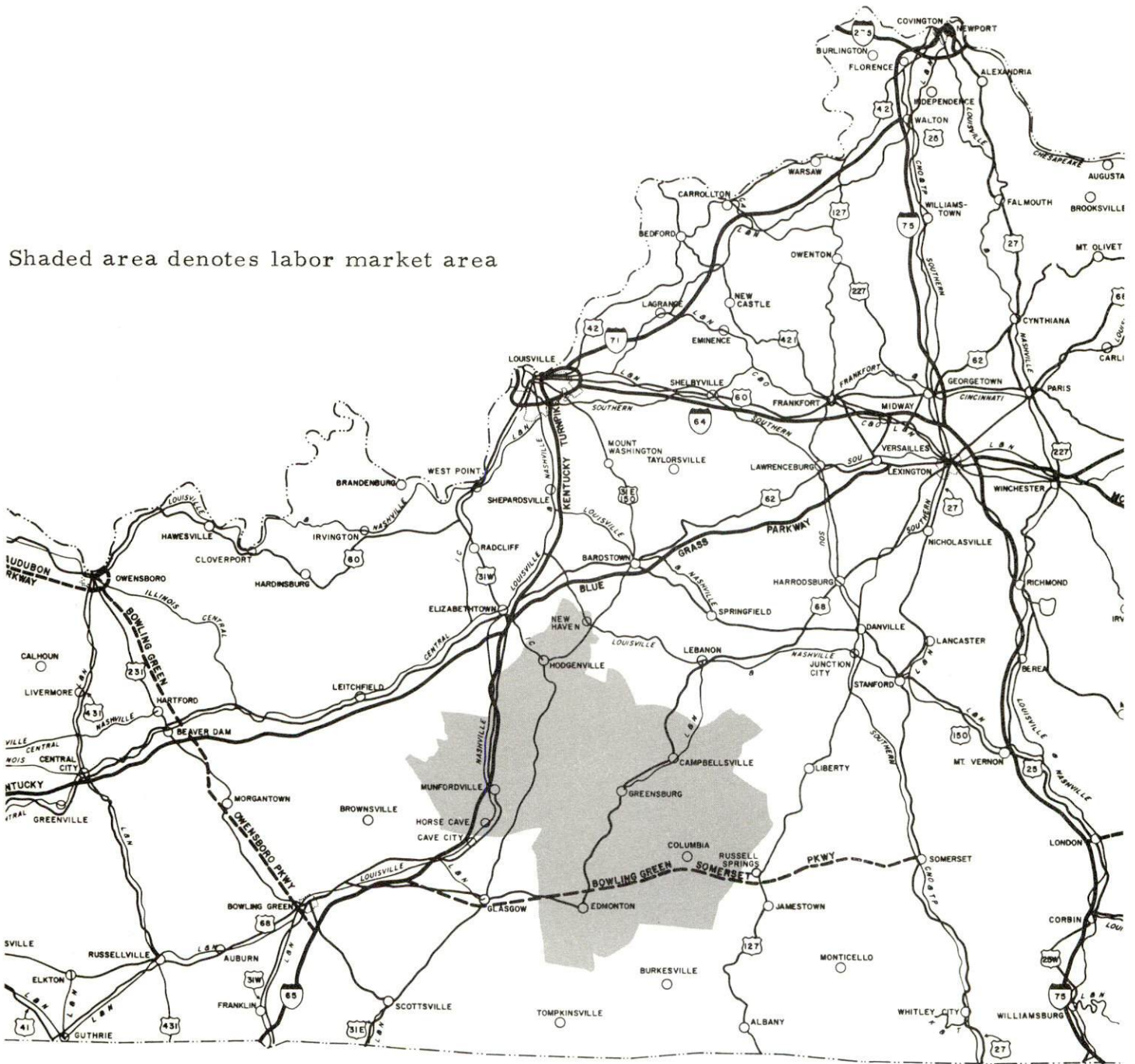
<u>Chapter</u>	<u>Page</u>
LOCAL GOVERNMENT16
City.16
County16
Assessed Value of Property - 196916
Local General Property Tax Rates Per \$100 of Assessed Valuation - 196916
Planning and Zoning16
Safety17
Police17
Fire17
Sanitation17
HEALTH.18
Hospitals18
Nursing Homes.18
Public Health18
OTHER LOCAL FACILITIES20
Communications20
Library Services20
Religious Institutions20
Financial Institutions22
Hotels and Motels22
Clubs and Organizations.22
RECREATION23
Local23
Area23
AGRICULTURE - NATURAL RESOURCES - CLIMATE25
Agriculture25
Natural Resources25
Climate25
HISTORY.26



AERIAL VIEW OF GREENSBURG, KENTUCKY

GREENSBURG LABOR MARKET AREA

Shaded area denotes labor market area



GREENSBURG, KENTUCKY - A RESOURCE PROFILE

Location

Greensburg is the largest city in Green County and serves as the county seat. The county, located in southcentral Kentucky, is bordered on the west by Hart County, on the north by Larue County, on the east by Taylor County, and on the south by Metcalfe and Adair Counties. The Green River flows across the county from east to west. Greensburg is 93 miles south of Louisville, Kentucky, 100 miles northeast of Nashville, Tennessee, and 91 miles southwest of Lexington, Kentucky. The city has a 1970 population of 1,994. Green County has a 1970 population of 9,970.

The Economic Framework

Total employment in Green County averaged 3,530 in 1968, with agriculture providing over 1,600 jobs. There were 325 persons employed in trade and services, 220 in manufacturing, and 380 in government. Manufacturing has increased by more than 400 jobs or 634 percent since 1959. Major industrial products are draperies, housefurnishings, apparel, and furniture.

Per capita income in the county in 1968 was \$1,902. Between 1959 and 1968, per capita personal income in the county increased 70 percent.

The Green County labor market area includes Green and its five surrounding counties. Area employment averaged 26,220 in 1968, with agriculture providing 9,000 jobs, manufacturing 4,790 jobs, trade and services 3,945 jobs, and government 2,360 jobs. Area industrial employment has increased 98 percent since 1959 with sharpest employment gains in the apparel industry.

Despite important industrial gains in recent years, the area still has a deficit of 1,832 manufacturing jobs when measured against the national industrial employment-population ratio. This indicates an area where the potential for additional manufacturing production is excellent.

Resources for Growth

1. There is a current estimated labor supply of 3,360 men and 2,460 women available for industrial jobs in the Greensburg labor market area. In addition, 3,870 young men and 3,765 young women will become 18 years of age by 1976 and potentially available for work.

2. Rail service is provided to Greensburg by the Louisville & Nashville Railroad. Highway transportation in the Greensburg area will be much improved when the new highway, which will extend from the Blue Grass Parkway to just south of Campbellsville, is completed. The nearest small craft airport is located at Campbellsville, 11 miles distant. Commercial air service is available at Bowling Green, 71 miles distant.

3. Energy - both gas and electricity - is available in large quantity. Electricity is supplied by the Kentucky Utilities Company, Taylor County RECC, and Farmers RECC. Natural gas is supplied by the Western Kentucky Gas Company. The local water supply from the Green River is adequate for continued growth.

4. Industrial sites - Greensburg has six sites available for industrial use. Also, three industrial sites are located at Summersville, 5 miles northwest of Greensburg.

5. Campbellsville College is located 11 miles from Greensburg. This four-year coeducational liberal arts college confers two degrees; the Bachelor of Arts and the Bachelor of Science. In addition, Greensburg is within 50 miles of four other institutions of higher learning.

The Green County Vocational Extension Center opened in 1968 and offers training in seven different courses.

Community Programs for Improvement

Greensburg, designated an All-Kentucky City in 1968, is continuing its program of community development. Recent improvements include a new country club with a 9-hole golf course; a new Catholic church building; new vocational extension center; resurfacing of the streets in the entire central business district; new \$535,000 addition to the hospital; and construction of new bleachers, under roof, at the baseball park. A new bank building and a new 80-bed nursing home are presently under construction. Three subdivisions are being developed. Projects being planned include a new water district which will serve the southern portion of Green County, a new city park, additional downtown parking space, and a new sanitary land fill. A 27-acre site has been purchased adjacent to the new vocational school which is to be the location of a new county high school. Construction is tentatively scheduled to begin in the Fall of 1970. The new school is expected to be in use by the Fall of 1972.

Recreation, Entertainment, and Livability

Greensburg is located in an area which offers several different types of recreation. The Campbellsville College Glee Club, the community concert series, and the Little Theater in Campbellsville provide cultural entertainment. Robinson Creek and the Green River Reservoir, both within a short distance of Greensburg, provide facilities for boating, swimming, and picnicking.

Mammoth Cave National Park and Lake Cumberland State Resort Park are both located within 50 miles of Greensburg. Mammoth Cave Park offers hotel accommodations, cottages, dining room, cave tours, nature trails, and a scenic boat cruise. Lake Cumberland Park offers cottages and camping facilities, lodge, dining room, swimming pool, 9-hole (par-3) golf course, horseback riding, and playground.

THE LABOR MARKET

POPULATION TRENDS ^{1/}

	Population			Percent Change	
	1970	1960	1950	1960-70	1950-60
Greensburg	1,994	2,334	1,032	-14.6	+126.2
Labor Market Area	71,287	75,065	78,395	- 5.0	- 4.2
Green County	9,970	11,249	11,261	-11.4	- 0.1
Adair County	12,608	14,699	17,603	-14.2	- 16.5
Hart County	13,448	14,119	15,321	- 4.8	- 7.8
Larue County	10,566	10,346	9,956	+ 2.1	+ 3.9
Metcalfe County	7,797	8,367	9,851	- 6.8	- 15.1
Taylor County	16,898	16,285	14,403	+ 3.8	+ 13.1

GENERAL EMPLOYMENT CHARACTERISTICS, 1968 ^{2/}

Major Employment Group	Employment	
	Green County	Labor Market Area
TOTAL	3,528	26,222
Agricultural	1,691	9,009
Nonagricultural	1,837	17,213
Manufacturing	218	4,789
Trade and services	322	3,945
Government	381	2,357

MANUFACTURING EMPLOYMENT TRENDS BY INDUSTRY SEPTEMBER 1959 AND 1969 ^{3/}

Industry	Green County			Labor Market Area		
	1969	1959	% Change	1969	1959	% Change
TOTAL	470	64	+634.4	5,225	2,643	+ 97.7
Food & kindred products	36	33	+ 9.1	297	358	- 17.0
Tobacco	0	0	--	11	12	- 8.3
Apparel, textiles, leather	254	0	--	4,194	1,843	+127.6
Lumber & furniture	107	28	+282.1	359	389	- 7.7
Printing, publishing, paper	4	0	--	53	32	+ 65.6
Chemicals, petroleum, coal, rubber	0	0	--	3	3	--
Stone, clay & glass	13	3	+333.3	29	6	+383.3
Primary metals	56	0	--	65	0	--
Machinery & metal products	0	0	--	214	0	--
Other	0	0	--	0	0	--

GREENSBURG MANUFACTURING FIRMS,
THEIR PRODUCTS AND EMPLOYMENT ^{4/}

Firm	Product	Employment		
		Total	Male	Female
American Needlecrafts, Inc.	Quilted bedspreads, comforters, draperies	108	8	100
Anaconda Wire & Cable Co., Inc.	Enameled coated copper wire	47	47	0
Clark Casual Furniture, Inc.	Rattan furniture	70	63	7
Edmonton Manufacturing Co.	Work clothes, uniforms	85	10	75
EMPCO Corporation	Aluminum church spires	7	6	1
Green County Milling Co.	Feed	5	4	1
Greensburg Bottling Co.	Carbonated beverages	27	25	2
Greensburg Manufacturing Co.	Furniture dimension stock	50		
Greensburg Record-Herald	Newspaper, job printing	3	1	2
Sharpes Cedar & Hardwood Mill	Hardwood lumber, cedar posts, cherry furniture squares	3	3	0
H. R. Squires	Drainage tile	1	1	0
Taylor-Green Ready Mix Co.	Ready mixed concrete, concrete products	9	8	1
Tennessee Gas Pipeline Co.	Liquid hydrocarbon	52	52	0
Winn Milling Co.	Corn meal, feed	5	4	1
Owen Wright	Lumber, tobacco sticks, cedar posts	3	3	0

WAGE RATES FOR SELECTED OCCUPATIONS
GREENSBURG, KENTUCKY ^{5/}

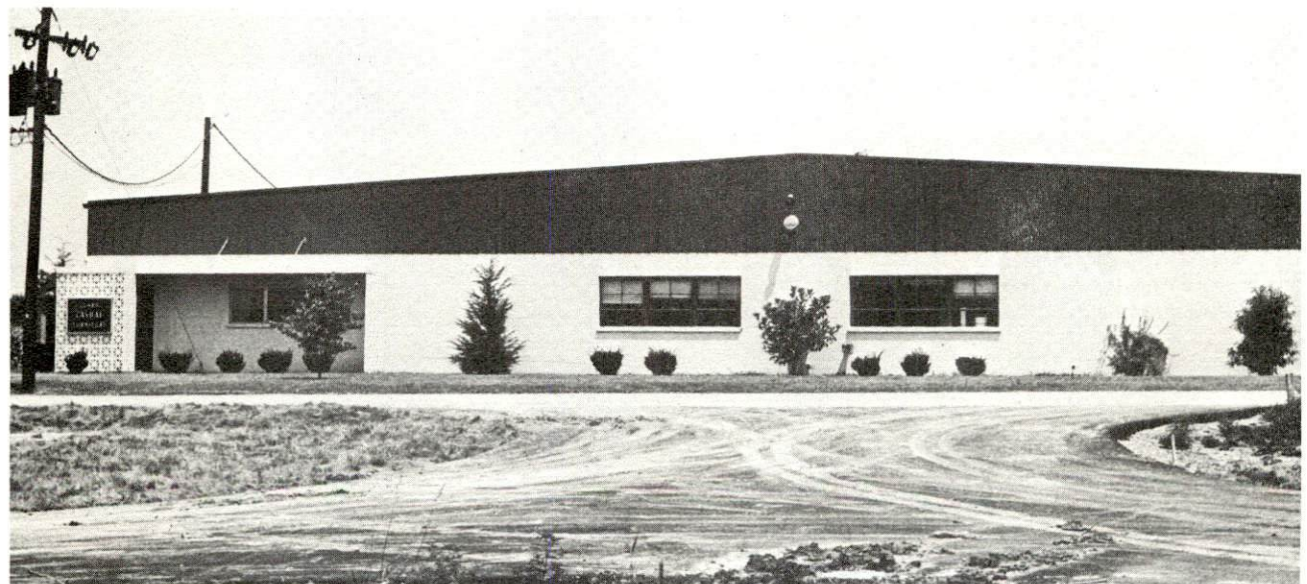
Classification	Wages Per Hour	
	Starting	Maximum
<u>Production Employees</u>		
Assembler	\$1.60	\$2.10
Inspector	1.60	2.45
Production Laborer	1.60	2.00
Punch Press Operator	1.60	2.00
<u>Service Employees</u>		
Electrician (Class-A)	\$1.75	\$2.75
Laborer	1.60	1.75
Machinist	2.40	2.80



EDMONTON MANUFACTURING COMPANY



AMERICAN NEEDLECRAFT



CLARK CASUAL FURNITURE

Classification	Wages Per Hour	
	Starting	Maximum
<u>Service Employees</u>		
Mechanic, Maintenance	\$2.40	\$2.90
Truck Driver, Industrial (Class-A)	1.60	2.50
<u>Office Employees</u>		
Bookkeeper	\$1.60	\$3.00
File Clerk	1.60	1.90
Receptionist	1.60	2.00
Secretary	1.60	2.00
Typist	1.60	2.00

LABOR ORGANIZATIONS

<u>Union</u>	<u>Representing Workers at:</u>
Communications Workers of America Teamsters	Clark Casual Furniture, Inc. Anaconda Wire & Cable Co.

CURRENT AND FUTURE LABOR SUPPLY -
GREENSBURG LABOR MARKET AREA

County	1970			Future Labor Supply by 1976 ^{7/} (Becoming 18 Years of Age)		
	Total	Male	Female	Total	Male	Female
Labor Market Area	5,820	3,360	2,460	7,632	3,869	3,763
Green	682	435	247	1,143	588	555
Adair	1,715	1,003	712	1,428	707	721
Hart	1,139	641	498	1,425	755	670
Larue	525	289	236	1,158	582	576
Metcalfe	1,061	596	465	833	412	421
Taylor	698	396	302	1,645	825	820

TOTAL PERSONAL INCOME 8/

Area	1968	1959	% Change
Green County	\$ 20,549,000	\$ 12,201,000	+68.4
Labor Market Area	146,951,000	77,954,000	+88.5
Kentucky	8,516,000,000	4,655,000,000	+82.9

PER CAPITA PERSONAL INCOME 9/

Area	1968	1959	% Change
Green County	\$1,902	\$1,116	+70.4
Labor Market Area	\$1,512 to 2,625	\$829 to 1,319	+82.4 to +99.1
Kentucky	2,645	1,552	+70.4

EDUCATION

Public Schools

Green County

Total Enrollment	2,119
Elementary	1,534
High School	585
Student-Teacher Ratio	23-1
Elementary	23-1
High School	20-1
State Rating of High School	Standard
Percent High School Graduates to College	27.2
Current Expenditures Per Pupil	\$424.90
Bonded Indebtedness, as of June 30, 1969	\$451,000

Vocational Schools

Nearest Area Schools

	Somerset	Bowling Green
Location		
Miles Distant	69	71
Curriculum	Accounting Junior Management General Clerical Secretarial-Steno Health Careers Distributive Education Electronics (Technology) Appliance Repair Auto Mechanics Drafting Machine Shop Printing	General Clerical, Dental Assistant, Health Careers, Nurses Aide, O.B. Technician, Ward Clerk, Distributive Education, Practical Nursing, Surgical Technician, Electronics (Technology) Highway Technology, Technical Drafting, Air Conditioning & Refrigeration, Auto Body Repair, Auto Mechanics, Carpentry, Commercial Foods, Drafting, Electricity, Machine Shop, Office Machine Repair, Printing, Radio & TV Repair, Welding, Small Engine Repair, Tool & Die Making

Vocational Schools (Contd)

	<u>Nearest Extension Center</u>
Location	Greensburg
Curriculum	Accounting Junior Management General Clerical Secretarial-Steno Health Careers Auto Mechanics Carpentry Electricity

Colleges and Universities

<u>Name</u>	<u>Area - Within 50 Miles</u>		<u>Highest Degree Conferred</u>
	<u>Location</u>	<u>Enrollment</u>	
Campbellsville College	Campbellsville	882	Baccalaureate
Lindsey Wilson College	Columbia	574	Associate
Elizabethtown Community College	Elizabethtown	630	Associate
St. Catharine College	St. Catharine	156	Associate

TRANSPORTATION

Rail

Lines serving - Louisville & Nashville Railroad

Services - Freight, switching, siding, REA Express pickup and delivery

RAILWAY TRANSIT TIME FROM GREENSBURG, KENTUCKY, TO: 10/

City	No. of Days		City	No. of Days	
	CL	CL		CL	CL
Atlanta, Ga.	3		Los Angeles, Calif.	6	
Birmingham, Ala.	3		Louisville, Ky.	1	
Chicago, Ill.	5		Nashville, Tenn.	2	
Cincinnati, Ohio	3		New Orleans, La.	4	
Cleveland, Ohio	4		New York, N. Y.	6	
Detroit, Mich.	5		Pittsburgh, Pa.	5	
Knoxville, Tenn.	2		East St. Louis, Ill.	3	

Truck Service

<u>Company</u>	<u>Home Office</u>
United Parcel Service	Louisville, Kentucky
Central Motor Express, Inc.	Campbellsville, Kentucky
Manning Motor Express, Inc.	Glasgow, Kentucky
McDuffee Motor Freight, Inc.	Lebanon, Kentucky

HIGHWAY MILES AND TRUCK TRANSIT TIME IN DAYS FROM GREENSBURG, KENTUCKY, TO SELECTED MARKET CENTERS

City	Highway Miles	Delivery Time ^{11/}		City	Highway Miles	Delivery Time	
		LTL	TL			LTL	TL
Atlanta, Ga.	357	3	1	Los Angeles, Calif.	1,940	5	3
Birmingham, Ala.	306	3	1	Louisville, Ky.	93	Overnight	
Chicago, Ill.	390	2	1	Nashville, Tenn.	100	1	1
Cincinnati, Ohio	180	1	1	New Orleans, La.	724	3	2
Cleveland, Ohio	424	2	1	New York, N. Y.	781	4	2
Detroit, Mich.	445	2	1	Pittsburgh, Pa.	469	3	1
Knoxville, Tenn.	160	2	1	St. Louis, Mo.	330	2	1

Air

	<u>Nearest Local</u>	<u>Nearest Commercial</u>
	Taylor County Airport	Bowling Green, Warren County Municipal
Location:	Campbellsville (11 miles)	Bowling Green (71 miles)
Runways:	1 paved	2 paved
Length:	3,000 feet	4,000 feet; 5,250 feet
Traffic		
Control:	Tetrahedron and wind sock	Wind tee
Lighting:	Runway lights sundown to sunrise	Runways, obstruction, beacons and wind tee until midnight
Services:	80-100 octane; charter service; flight instruction; taxi; coffee shop	80 and 100 octane; jet fuel; storage; minor A & E repairs; FAA Flight Service Station; taxi and rental car service; restaurant; Northern Airlines

Bus

Southern Greyhound Bus Line

Taxi

Two companies - 24-hour radio - dispatched service

POWER AND FUEL

Electricity

Company serving Greensburg - Kentucky Utilities Company
Source of power - Kentucky Utilities Company
Total generating capacity - 740,000 KW
Industrial rates negotiated by - Kentucky Utilities Company, Lexington,
Kentucky

Company serving Green County - Taylor County RECC; Farmers RECC
Source of power - East Kentucky Power Cooperative
Total generating capacity - 515,000 KW
Industrial rates negotiated by - Taylor County RECC, Campbellsville,
Kentucky; Farmers RECC, Glasgow, Kentucky

Natural Gas

Company serving - Western Kentucky Gas Company
Source of Supply - Tennessee Gas Pipeline Company
Size of transmission lines - 4-inch
Distribution lines - 4, 3, and 2 inches
BTU content - 1,020 per cubic foot; Specific gravity - .58 to .60
Distribution pressure - 10 to 60 psi

Rates will be furnished by - Western Kentucky Gas Company, Campbellsville,
Kentucky.

WATER AND SEWERAGE

Water

Company serving - Greensburg Water Works
 Source - Green River
 Treatment plant capacity - 796,000 gpd
 Average daily consumption - 297,900 gallons
 Peak daily consumption - 426,500 gallons
 Type treatment - settled, filtered, chlorinated, fluorination
 Storage capacity - 500,000 gallons
 Average pressure - 80 psi
 Size mains - 2, 6, and 8 inches

MONTHLY WATER RATES FOR WHOLESALE
 AND INDUSTRIAL CONSUMERS

First	2,000 gals. or less	\$3.80 (minimum per month)
Next	3,000 gals.	1.45 per M gals.
Next	5,000 gals.	.95 per M gals.
Next	10,000 gals.	.80 per M gals.
Next	25,000 gals.	.60 per M gals.
All over	45,000 gals.	.30 per M gals.

Company serving - Green-Taylor Water District
 Source of treated water - Greensburg Water Works
 Area served - north-northwestern part of county
 Number of customers - 337
 Size lines - 8, 6, 4, 3, and 2 inches
 Storage capacity - 160,000 gallons

Rates:

First	2,000 gals. per month	\$5.90 (minimum)
Next	2,000 gals. per month	2.25 per M gals.
Next	6,000 gals. per month	1.50 per M gals.
Next	15,000 gals. per month	1.00 per M gals.
Over	25,000 gals. per month	.50 per M gals.

Surface water sources - Green River
 Average discharge - about 1,100 cfs
 Expected ground water yield - 5 to 50 gpm except along alluvial belt
 Yield along main streams - 50 to 200 gpm (Green River)

Sewerage

Company serving - Municipal service

Design capacity - 750 gpm

Average daily flow - 200 gpm

Type treatment - aeration

Treated effluent discharged into - Green River

Size of sanitary mains - 10 and 8 inches

Rates - 50 percent of monthly water bill

LOCAL GOVERNMENT

City

Structure - Mayor - 4-year term; 6 councilmen - 2-year terms
 Budget 1970 - General Fund \$45,000; Water and Sewer Fund \$120,000

County

Structure - County Judge - 4-year term; 4 magistrates - 4-year terms
 Budget 1969-70 - General Fund \$94,600; Road Fund \$40,000

Assessed Value of Property - 1969

<u>Classes of Property*</u>	<u>Greensburg</u>	<u>Green County</u>
Real Estate	\$8,485,480	\$41,216,418
Tangibles	2,257,716	10,725,886
Public Service	980,347	15,258,553

Local General Property Tax Rates Per \$100 of Assessed Valuation - 1969 ^{12/}

<u>Taxing Unit**</u>	<u>Greensburg</u>	<u>Green County</u>
State	\$.015	\$.015
County	.201	.201
School	.559	.559
City	.220	
Total	\$.995	\$.775

Planning and Zoning

Agency - Greensburg Planning Commission
 Plans completed - Comprehensive Plan, Subdivision Regulations,
 Public Improvements Program, Zoning Ordinance
 Codes adopted - Codes Compliance Program

*Property assessed at 100 percent of fair value.

**Manufacturing machinery, raw materials inventories and goods in process inventories are not subject to local tax. State rate is only \$0.15 per \$100.

Safety

<u>Police</u>	<u>Greensburg</u>	<u>Green County</u>
Total staff	4 full-time 1 part-time	4
Radio-patrol cars	1	4
Other equipment	Standard	Standard

Fire

American Insurance Association Fire Rating	7	
Volunteers	21	24
Equipment:		
500 gpm pumpers	1	1
250 gpm pumpers		1
Rescue truck	1	
Other		250-gpm auxiliary pump

Sanitation

	<u>Greensburg</u>
Type service	municipal
Cost:	
residential	\$1.50 monthly
business	\$3.50 monthly; a \$25 monthly charge for several large firms
Collection frequency:	
residential	weekly
business	weekly
Trash pickup	weekly; for large firms, as needed
Disposal method	open dump

HEALTH

Hospitals

	<u>Location</u>	<u>Beds</u>
Jane Todd Crawford Memorial Hospital	Greensburg	78
General hospital facilities - X-ray, laboratory, operating room, emergency outpatient service, recovery room, oxygen, electric adjusting beds, pharmacy, air conditioning		
Medical staff - 7 medical doctors, 8 registered nurses, 7 licensed practical nurses, 1 surgeon		
Other - Mental Health Regional Office		

Nursing Homes

	<u>Number</u>	<u>Beds</u>
Extended care homes	1	34

Public Health

Facility - Green County Health Department

Staff - nurse, clerk, health officer (part-time), administrative assistant (part-time), sanitary inspector (part-time)

Budget 1969-70 - \$21,681



JANE TODD CRAWFORD
MEMORIAL HOSPITAL



RESIDENTIAL AREA

OTHER LOCAL FACILITIES

Communications

Telephone - General Telephone Company of Kentucky
Services - all standard services

Telegraph - Western Union
Services - telephone and messenger service

Postal - U. S. Post Office
Class - Second
Mail received - 3 times daily
Mail dispatched - 3 times daily

Newspapers - Greensburg Record Herald
Weekly and circulation - 3,500
Other papers received from - Louisville, Kentucky

Radio -
Stations received from - Lebanon, Campbellsville, Louisville, and
Lexington, Kentucky

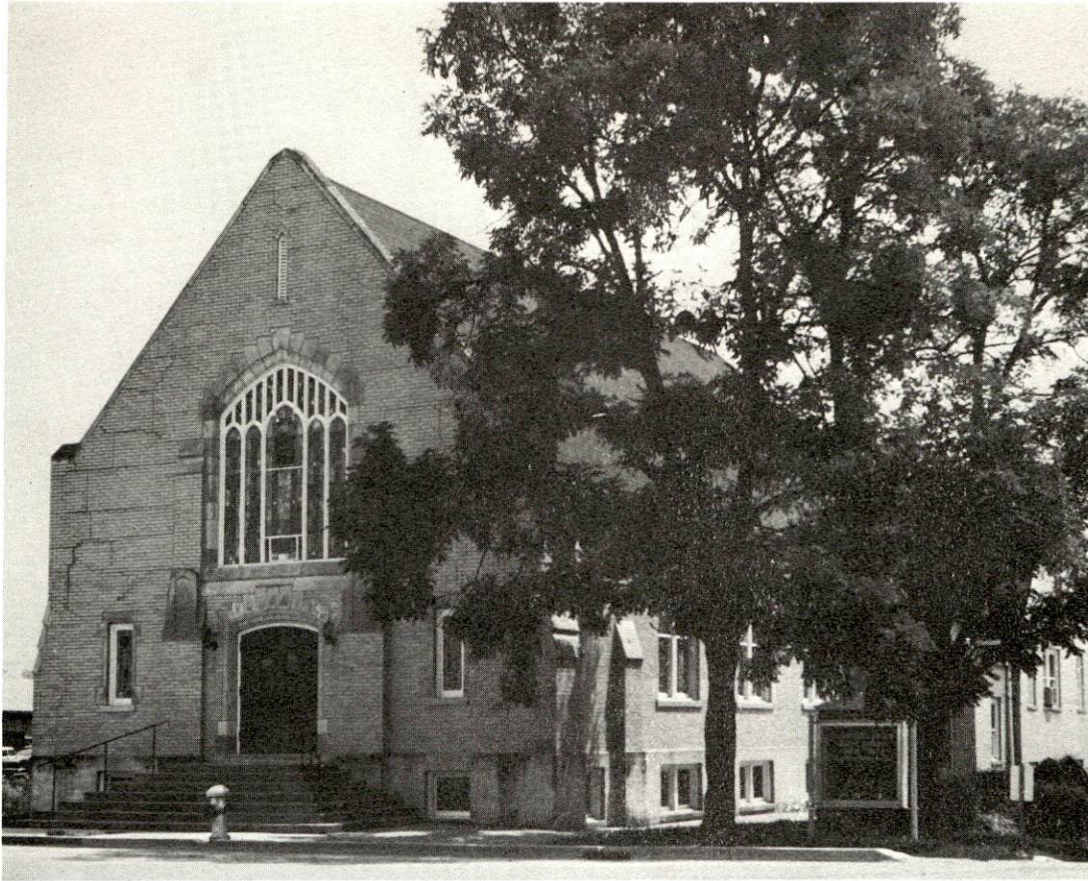
Television -
Reception from - Louisville and Bowling Green, Kentucky
Kentucky Educational Television - Channel 23, Elizabethtown
transmitter

Library Services

Public library - Green County Public Library
Size collection - approximately 15,000 volumes
Circulation, 1968-69 -97,278 (combined library and bookmobile)
Services - printings, records, film strips, bookmobile

Religious Institutions

Number of churches - 10
Denominations - Church of Christ, Christian, Presbyterian U.S.A.,
Cumberland Presbyterian, Baptist, Methodist, Catholic



METHODIST CHURCH



BAPTIST CHURCH

Financial Institutions

<u>Name</u>	<u>Statement as of December 31, 1969</u>	
	<u>Assets</u>	<u>Deposits</u>
The Peoples Bank	\$7,578,261.55	\$6,840,195.04
Greensburg Deposit Bank	9,895,611.20	8,858,544.49

Hotels and Motels

Number - 2

Units - 55

Clubs and Organizations

Business and Civic - Greensburg-Green County Chamber of Commerce,
Jaycees, Lions, Rotary

Fraternal - American Legion, Masons

Women's - Eastern Star, American Legion Auxiliary, Homemakers,
Woman's Club, Garden Club, Art Club, Jane Todd Hospital Auxiliary

Youth - Boy Scouts, Beta Club, Babe Ruth League, Co-ed Y, Cub Scouts,
FTA, FHA, 4-H, FFA, Girl Scouts, Little League

Other - Green County Industrial Foundation, Farm Bureau, Greensburg
Historical Society, Sportsman Club, PTA, Ministerial Association

RECREATION

Local

Public Recreation Facilities

Supervised program - yes

Park - 1

Playgrounds - 5

Swimming pool - 1

Tennis courts - 2

Baseball diamonds - 5

Football field - 1

Other - fair grounds

Private Recreation Facilities

Country club - 1

Golf course - 1 (9-hole)

Movie theater - 1 drive-in

Other - miniature golf course, 2 skating rinks

Tourist Attractions

Old Green County Courthouse

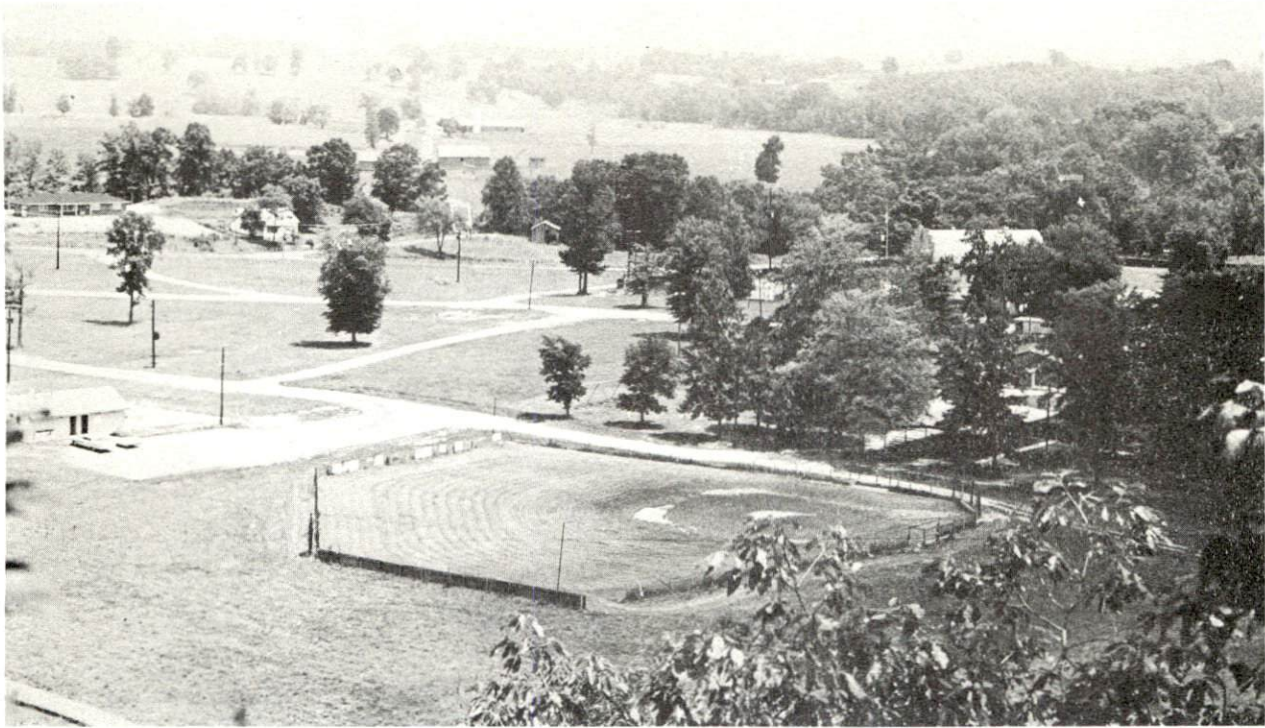
Canoe Marathon on Green River

Area (Within 50 miles)

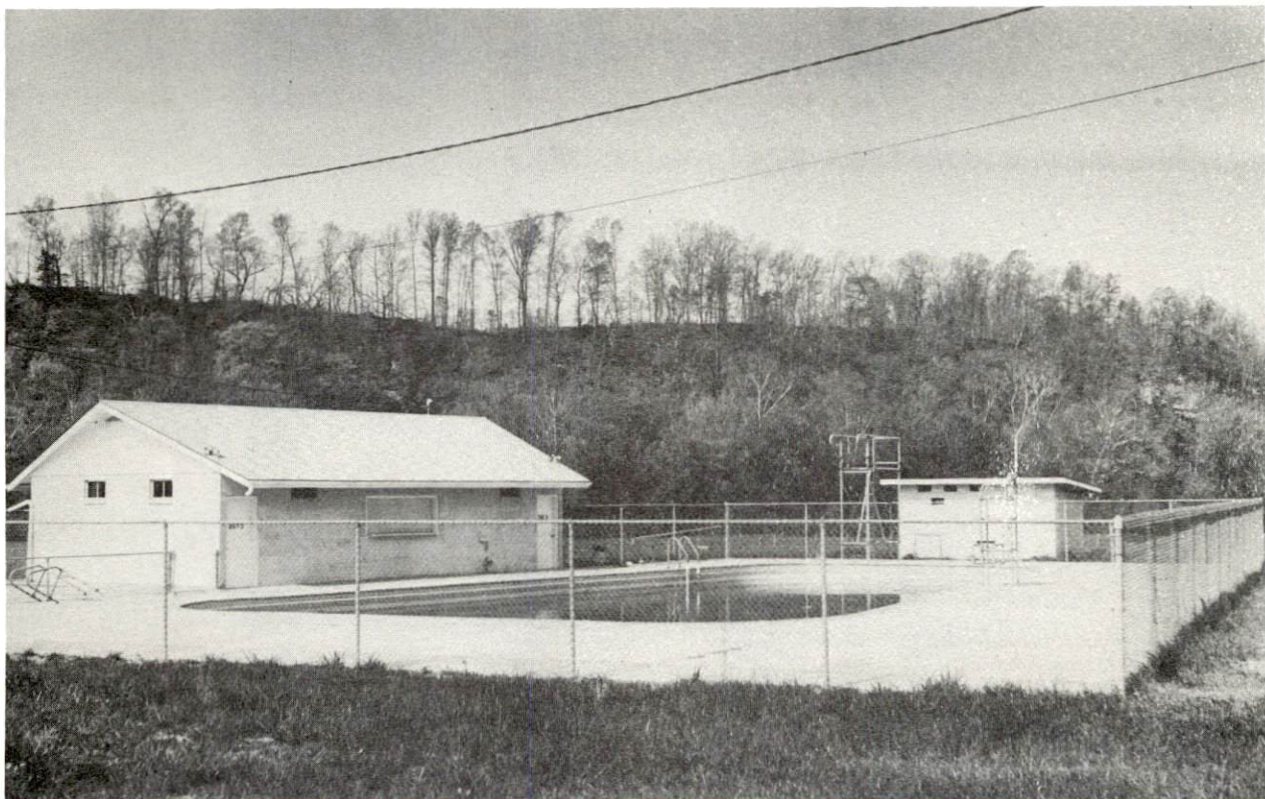
Green River Reservoir

Mammoth Cave National Park

Lake Cumberland State Resort Park



MUNICIPAL SWIMMING POOL



AMERICAN LEGION PARK

AGRICULTURE - NATURAL RESOURCES - CLIMATE

Agriculture 13/

	<u>Green County</u>	<u>Labor Market Area</u>
Total land area (acres)	180,480	1,241,600
Percent of area in farm land	82.5	79.5
Number of farms	1,548	9,887
Average size of farms (acres)	96.2	99.8
1964 value of all farm products	\$7,057,384	\$40,790,778
Value per farm	4,559	4,125
Total crop sales	4,236,530	23,161,877
Total livestock & livestock products	2,820,852	16,880,455
1967 agricultural production included:		
Burley tobacco (lbs.)	4,172,000	24,757,000
Corn (bu.)	781,000	5,982,000
Cattle and calves (number)	27,600	178,400
Hogs and pigs (number)	9,400	62,900
Milk production, 1966 (lbs.)	36,300,000	258,580,000

Natural Resources

Principal mineral resources	Limestone
Other mineral resources	Petroleum, natural gas
Acres of commercial forest land	59,700
Most abundant tree species	White oak, red oak, hickory, yellow poplar, beech, hard maple, ash

Climate 14/

	<u>Green County</u>
Temperature	
Annual mean (30-year record)	55.6 degrees
Average annual 1969	54.6 degrees
Record highest (6-year record) July 1966	98.0 degrees
Record lowest (6-year record) January 1966	-10.0 degrees
Seasonal heating degree-days (30-year record)	4,683
Precipitation	
Mean annual total (30-year record)	44.73 inches
Mean annual snow and sleet (25-year record)	16.00 inches
Total precipitation 1969	39.50 inches
Mean number days precipitation (25-year record) (.01 inch or more)	128
Average number days thunderstorms (25-year record)	47
Prevailing winds (17-year record)	South

HISTORY

Green County, the sixteenth county formed in Kentucky, dates from 1792. The county, named for General Nathaniel Greene, contains 282 square miles. Its surface is rolling to hilly and broken, it has some tracts of timber, and deposits of oil and gas are extensive.

Green County is widely known for its caves. In one cave, near Greensburg, anthropologists discovered a human skeleton whose tomb was carefully sealed behind a stone wall so expertly constructed that only the trained eye could detect it, which had been built by stonemasons of antiquity.

Greensburg was also named for General Nathaniel Greene. The city has the oldest courthouse in Kentucky. The building was started in 1799 and completed four years later. Greensburg is the site of Branch Creek Academy where Mentor Graham, later the headmaster of Greensburg School, received his education.

Names worthy of remembrance include:

- *Father David Rice, buried in Green County, was the first Protestant missionary west of the Allegheny Mountains.
- *Nathaniel Owens, the first sheriff of Green County, was the father of Mary Owens, who was Abraham Lincoln's sweetheart, and about whom has been written the historical novel Lincoln's Other Mary.
- *General James Allen was the first lawyer admitted to the Greensburg bar, and was the county's first County Court Clerk.

SOURCES OF INFORMATION

- 1/ U. S. Department of Commerce, Bureau of the Census, Census of Population, 1950, 1960, 1970 (Preliminary figures).
- 2/ Kentucky Department of Economic Security, Division of Research and Statistics.
- 3/ Kentucky Department of Economic Security, Number of Workers in Manufacturing Industries Covered by Kentucky Unemployment Insurance Law Classified by Industry and County, September 1959, September 1969.
- 4/ Kentucky Department of Commerce, 1970 Kentucky Directory of Manufacturers.
- 5/ Kentucky Department of Economic Security, Division of Employment Service, Glasgow Office.
- 6/ Kentucky Department of Economic Security, Kentucky Labor Supply Estimates by County, January 1970.
- 7/ Kentucky Department of Commerce, Future Labor Supply by 1976.
- 8/ University of Kentucky, Office of Development Services and Business Research, Total Personal Income for Kentucky.
- 9/ University of Kentucky, Office of Development Services and Business Research, Per Capita Income in Kentucky.
- 10/ Louisville & Nashville Railroad, Louisville, Kentucky.
- 11/ Central Motor Express, Inc., Campbellsville, Kentucky.
- 12/ Kentucky Department of Revenue, Kentucky Property Tax Rates, 1969.
- 13/ U. S. Department of Commerce, Bureau of the Census, Census of Agriculture, 1964. U. S. Department of Agriculture and Kentucky Department of Agriculture, Kentucky Agricultural Statistics, 1968.
- 14/ U. S. Department of Commerce, Environmental Science Services Administration, Climatological Data, 1969.

All other information was obtained from governmental offices, local businesses and organizations.