

1970

Industrial Resources: Greenup County

Kentucky Library Research Collections
Western Kentucky University, spcol@wku.edu

Follow this and additional works at: https://digitalcommons.wku.edu/greenup_cty

 Part of the [Business Administration, Management, and Operations Commons](#), [Growth and Development Commons](#), and the [Infrastructure Commons](#)

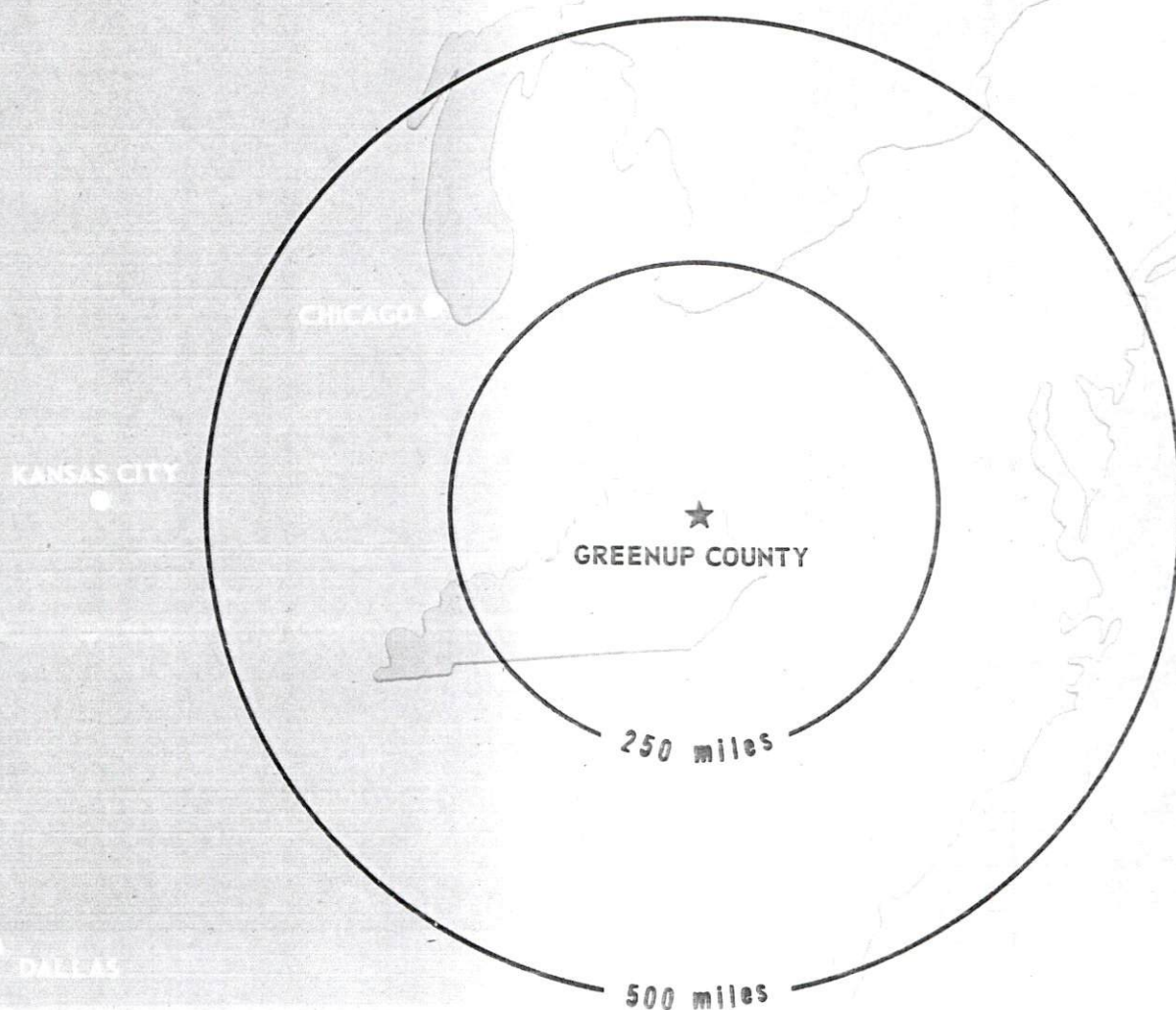
Recommended Citation

Kentucky Library Research Collections, "Industrial Resources: Greenup County" (1970). *Greenup County*. Paper 11.
https://digitalcommons.wku.edu/greenup_cty/11

This Report is brought to you for free and open access by TopSCHOLAR®. It has been accepted for inclusion in Greenup County by an authorized administrator of TopSCHOLAR®. For more information, please contact topscholar@wku.edu.

INDUSTRIAL RESOURCES

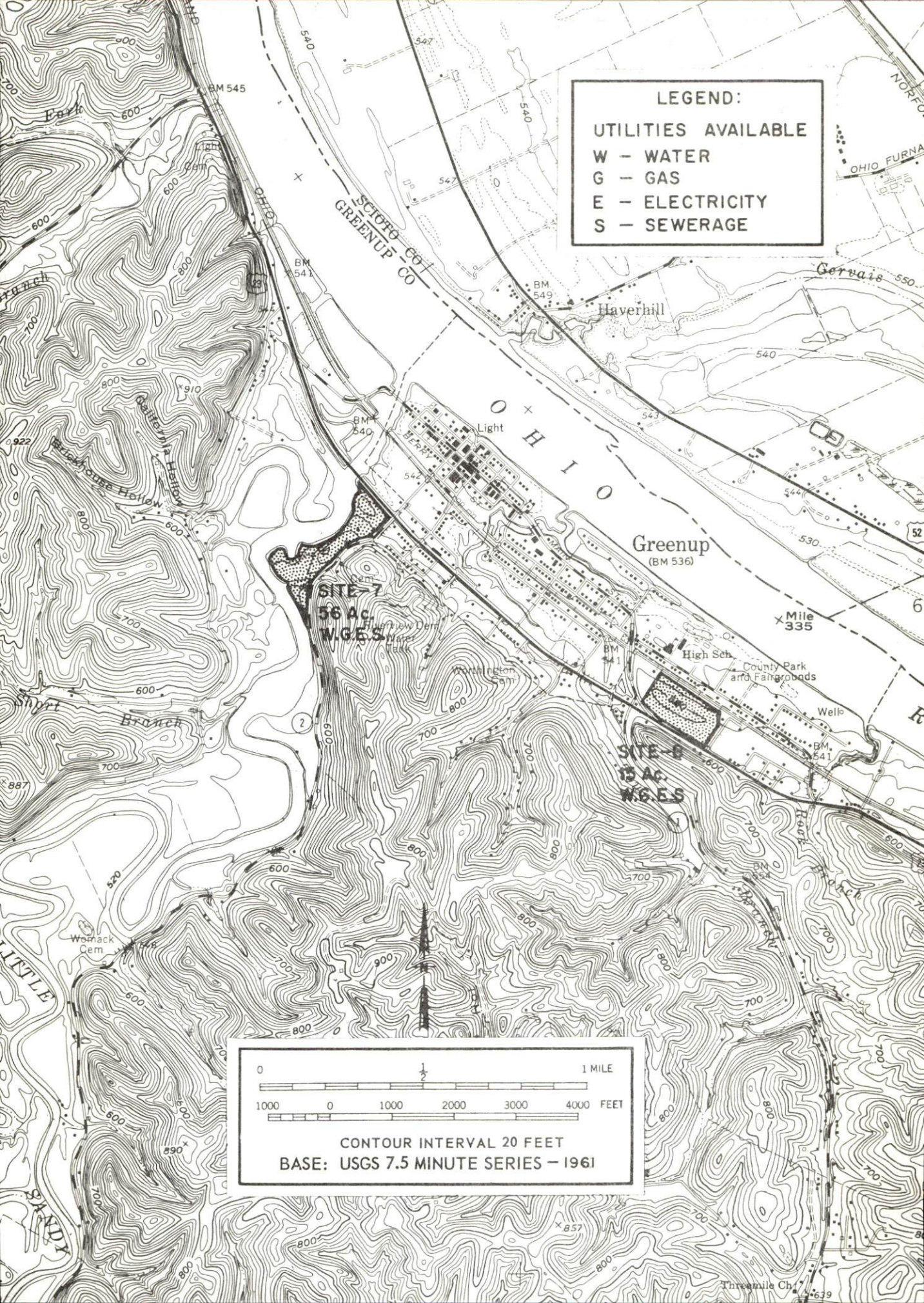
GREENUP COUNTY ***KENTUCKY***



LEGEND:

UTILITIES AVAILABLE

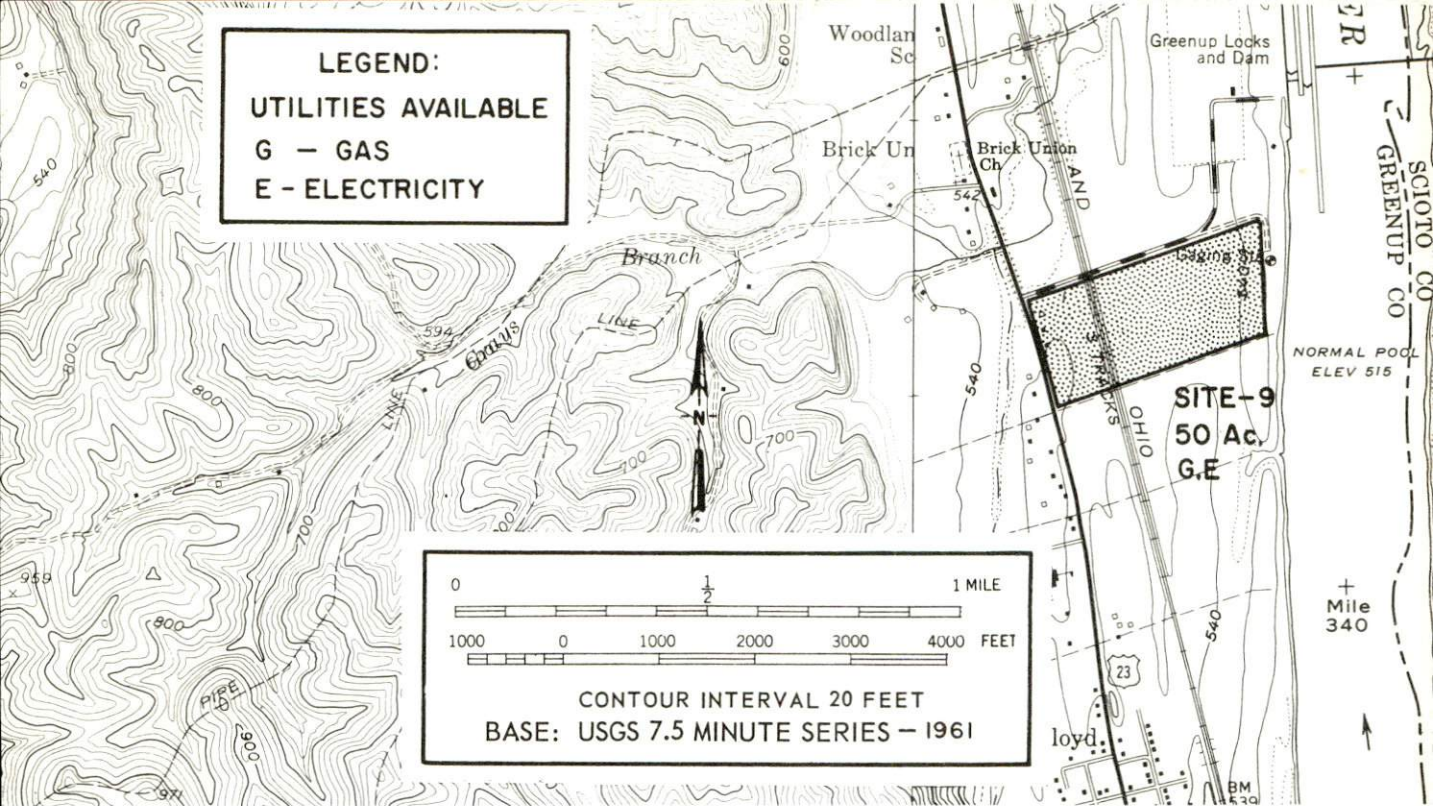
W - WATER
 G - GAS
 E - ELECTRICITY
 S - SEWERAGE



0 1/2 1 MILE

1000 0 1000 2000 3000 4000 FEET

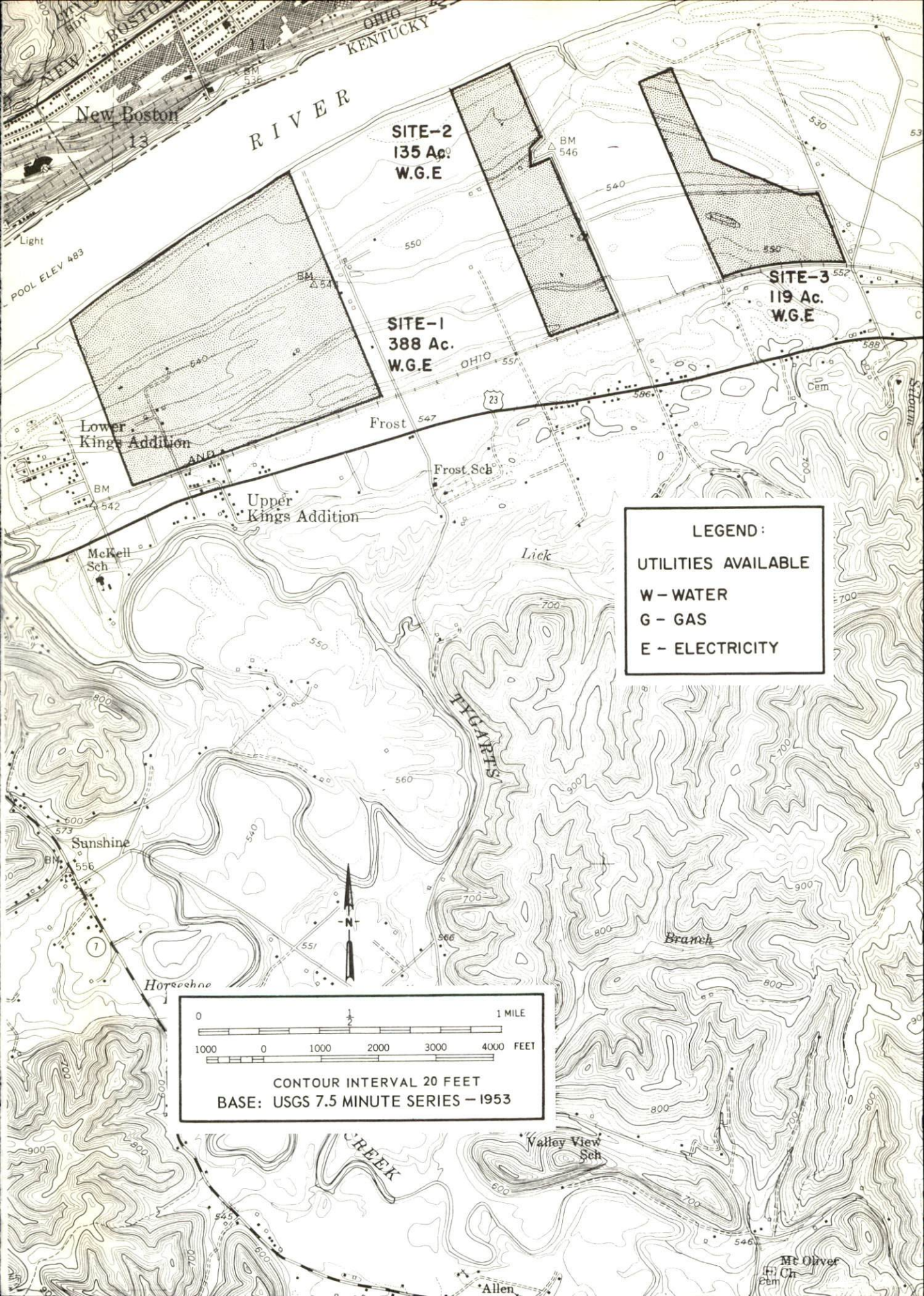
CONTOUR INTERVAL 20 FEET
 BASE: USGS 7.5 MINUTE SERIES - 1961



SITE # 7: ACREAGE AND TOPOGRAPHY: Approximately 56 acres, rolling land
 LOCATION: Southwest Greenup city limits
 ZONING: None
 HIGHWAY ACCESS: U. S. 23 at northeast border, Kentucky 2 at southern border
 RAILROADS: Not rail served
 WATER: Greenup municipal company
 SIZE LINE: 4-inch, 300 feet from site
 GAS: Columbia Gas of Kentucky
 SIZE LINE: 8-inch, 100 feet from site
 ELECTRICITY: Kentucky Power Company
 SEWERAGE: Greenup municipal
 OPTIONED BY: Greenup Industrial Development Corporation

SITE # 8: ACREAGE AND TOPOGRAPHY: 15 acres, level land
 LOCATION: Adjacent to Greenup city limits
 ZONING: None
 HIGHWAY ACCESS: U. S. 23 at southwest border
 RAILROADS: Chesapeake & Ohio at northern border
 WATER: Greenup municipal company
 SIZE LINE: 4-inch
 GAS: Columbia Gas of Kentucky
 ELECTRICITY: Kentucky Power Company
 SEWERAGE: Greenup municipal
 OWNERSHIP: Private

SITE # 9: ACREAGE AND TOPOGRAPHY: 50 acres, level land
 LOCATION: 4 1/2 miles north of Greenup
 ZONING: None
 HIGHWAY ACCESS: U. S. 23 on west border
 RAILROADS: Chesapeake & Ohio bisects site
 WATER: Raw water from Ohio River
 GAS: Columbia Gas of Kentucky
 ELECTRICITY: Kentucky Power Company
 SEWERAGE: Package plant necessary
 OWNERSHIP: Private



LEGEND:

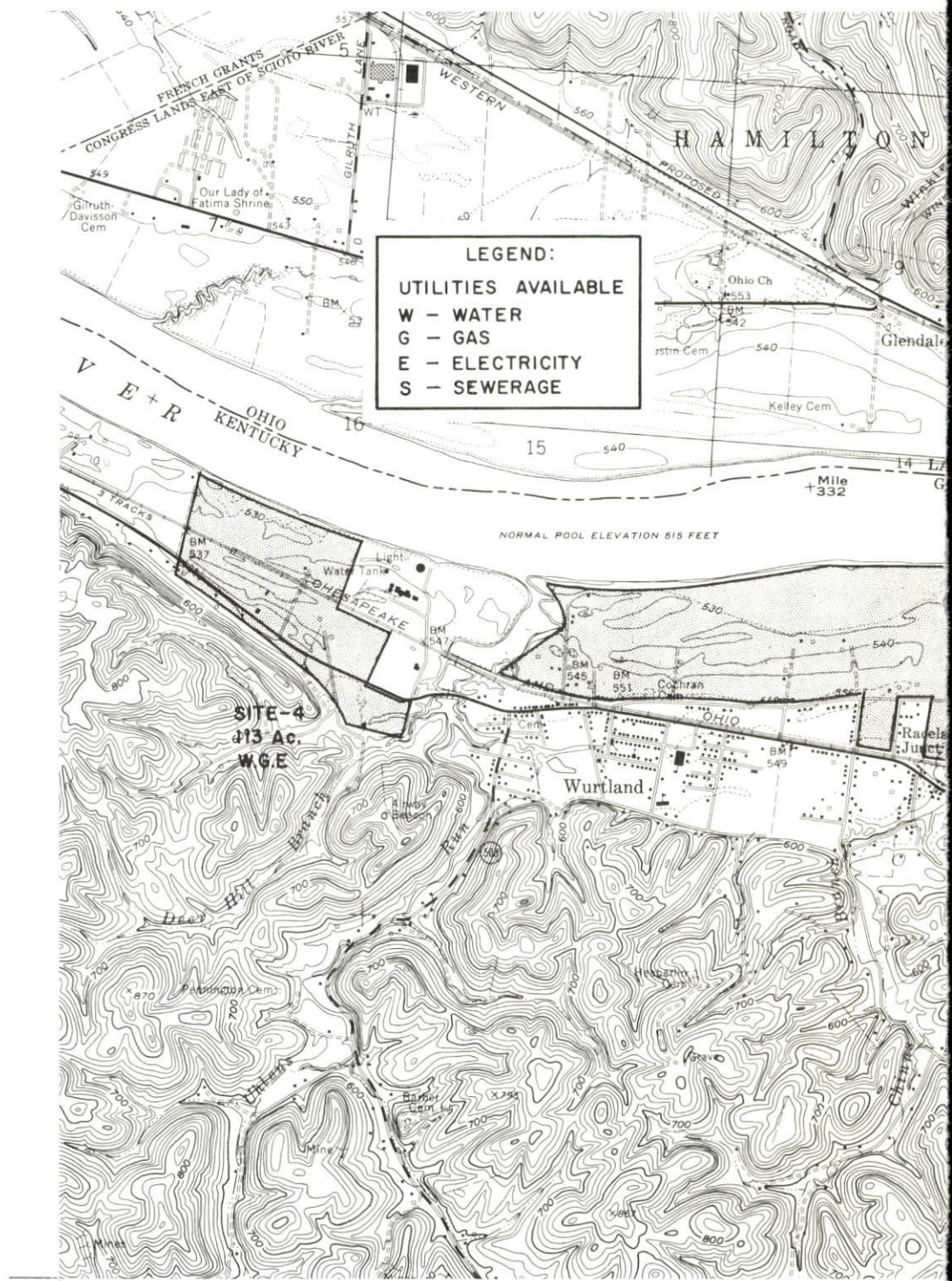
UTILITIES AVAILABLE

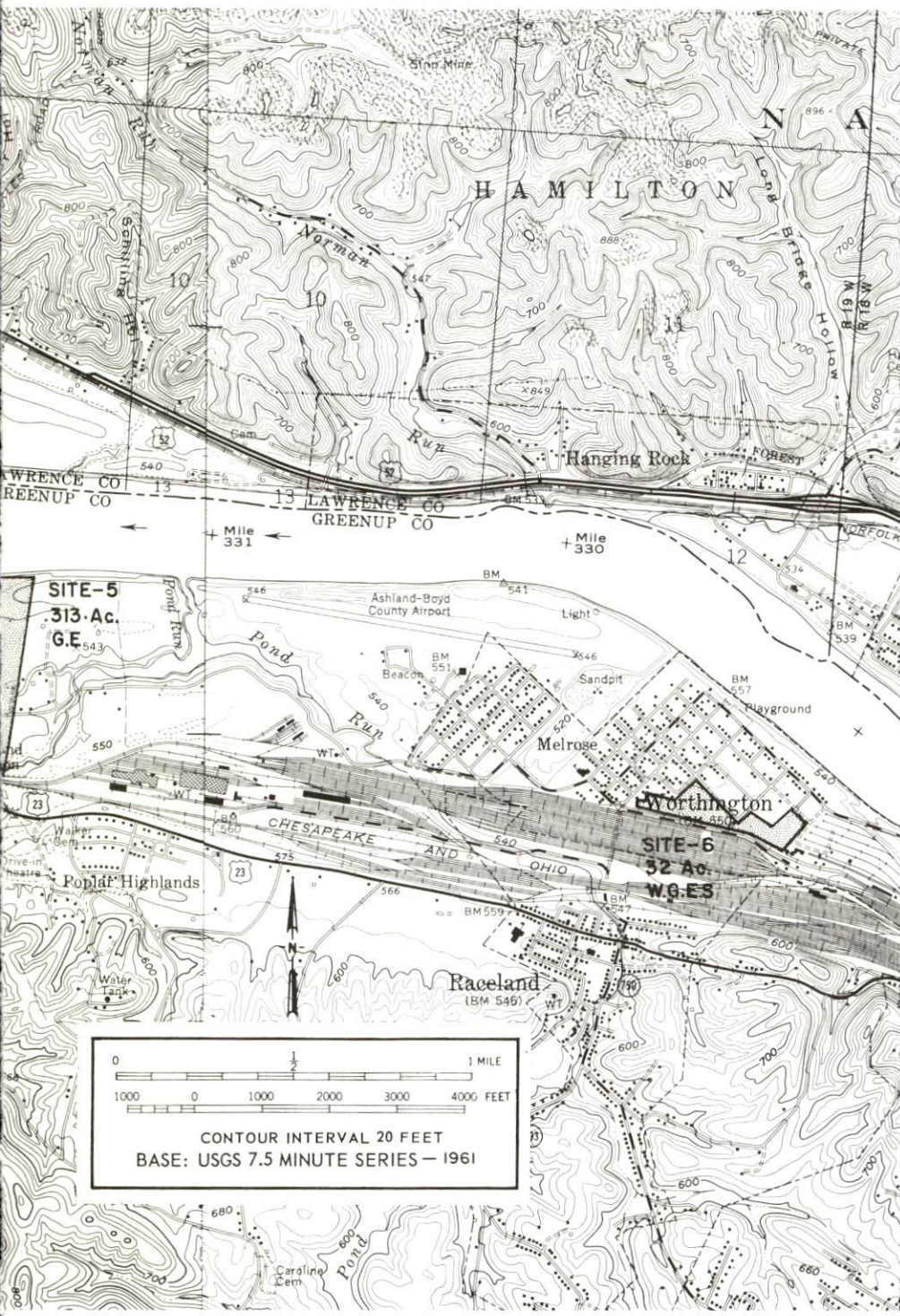
W - WATER

G - GAS

E - ELECTRICITY

CONTOUR INTERVAL 20 FEET
BASE: USGS 7.5 MINUTE SERIES - 1953





GREENUP COUNTY INDUSTRIAL SITES

1970

For more detailed information concerning the following sites, contact Mr. Edward Riggs, Greenup, Kentucky, or the Kentucky Department of Commerce, Frankfort, Kentucky.

SITE #1: ACREAGE AND TOPOGRAPHY: 388 acres,
level land
LOCATION: Approximately 1 mile southeast
of South Shore
HIGHWAY ACCESS: Two county roads lead to
U. S. Route 23, approximately 50 feet south
RAILROADS: This site is bound by the Chesapeake
& Ohio Railway
WATER: Surface water from Ohio River
GAS: Columbia Gas of Kentucky, Inc.
ELECTRICITY: Kentucky Power Company
OWNED BY: Chesapeake & Ohio Railway Co.

SITE #2: ACREAGE AND TOPOGRAPHY: 135 acres,
level land
LOCATION: Approximately 2 miles southeast
of South Shore
HIGHWAY ACCESS: A county road leads to
U. S. Route 23, one-fourth mile south.
RAILROADS: Bordered by the Chesapeake &
Ohio Railway on the south
WATER: Surface water from Ohio River
GAS: Columbia Gas of Kentucky, Inc.
ELECTRICITY: Kentucky Power Company
OWNED BY: Chesapeake & Ohio Railway Co.

SITE #3: ACREAGE AND TOPOGRAPHY: 119 acres,
level land
LOCATION: Approximately 3 miles southeast
of South Shore
HIGHWAY ACCESS: Two county roads lead to
U. S. Route 23, approximately 1,500 feet
south.
RAILROADS: The Chesapeake & Ohio Railway
borders the site on the south.
WATER: Surface water from Ohio River
GAS: Columbia Gas of Kentucky, Inc.
ELECTRICITY: Kentucky Power Company
OWNED BY: Chesapeake & Ohio Railway Co.

SITE #4: ACREAGE AND TOPOGRAPHY: 113 acres,
level to slightly rolling
LOCATION: Approximately 1 mile northwest
of Wurtland
HIGHWAY ACCESS: U. S. Route 23
RAILROADS: Chesapeake & Ohio Railway
bisects the site.
WATER: Wurtland Water District
GAS: Columbia Gas of Kentucky, Inc.
ELECTRICITY: Kentucky Power Company
OWNED BY: Kentucky Power Company

SITE #5: ACREAGE AND TOPOGRAPHY: 313 acres,
level to gently rolling land
LOCATION: Wurtland
HIGHWAY ACCESS: No portion of this site is
more than 2,000 feet from U. S. Route 23
and access is obtained by using six county roads.
RAILROADS: The southwestern portion of this
site borders the Raceland-Russell Yards of
the Chesapeake & Ohio Railway.
WATER: Surface water from Ohio River
GAS: Columbia Gas of Kentucky, Inc.
ELECTRICITY: Kentucky Power Company
OWNED BY: Kentucky Power Company

SITE #6: ACREAGE AND TOPOGRAPHY: 32 acres,
level land
LOCATION: Worthington
HIGHWAY ACCESS: Bound by Kentucky Route 244
on the south
RAILROADS: A spur extending from the Raceland-
Russell Yards of the Chesapeake & Ohio Railway
Company enters the southeastern portion of
this site.
WATER: Raceland Water Works
GAS: Columbia Gas of Kentucky, Inc.
ELECTRICITY: Kentucky Power Company
SEWERAGE: Worthington Sewer System
OWNED BY: Chesapeake & Ohio Railway Co.

INDUSTRIAL RESOURCES
GREENUP COUNTY, KENTUCKY

Prepared by
The Kentucky Department of Commerce
in cooperation with
The Greenup County Industrial Foundation
and
The Greenup Development Association

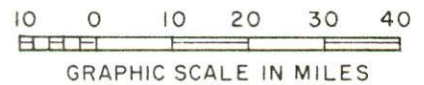
1970

TABLE OF CONTENTS

<u>Chapter</u>	<u>Page</u>
INDUSTRIAL SITES	i
GREENUP COUNTY, KENTUCKY - A RESOURCE PROFILE	1
THE LABOR MARKET.	5
Population Trends	5
General Employment Characteristics	5
Manufacturing Employment Trends by Industry	6
Greenup County Manufacturing Firms.	6
Wage Rates for Selected Occupations	7
Labor Organizations	7
Current and Future Labor Supply.	8
Total Personal Income	8
Per Capita Personal Income	8
EDUCATION	13
Public Schools	13
Vocational Schools	13
Colleges and Universities	14
TRANSPORTATION	15
Rail	15
Truck Service	15
Air	16
Bus	16
Taxi	16
POWER AND FUEL	17
Electricity.	17
Natural Gas	17
WATER AND SEWERAGE	18
Water.	18
Sewerage	21

<u>Chapter</u>	<u>Page</u>
LOCAL GOVERNMENT	23
City	23
County	24
Assessed Value of Property - 1969	24
Local General Property Tax Rates Per \$100 of	
Assessed Valuation - 1969	24
Planning and Zoning	24
Safety	25
Police	25
Fire	25
Sanitation.	26
HEALTH	27
Hospitals.	27
Nursing Homes	27
Public Health	27
OTHER LOCAL FACILITIES	28
Communications.	28
Library Services	29
Religious Institutions	29
Financial Institutions	29
Hotels and Motels	30
Clubs and Organizations	30
RECREATION	31
Local	31
Area	31
AGRICULTURE - NATURAL RESOURCES - CLIMATE.	33
Agriculture.	33
Natural Resources.	33
Climate	33
HISTORY	34

* Shaded area denotes labor market area



GREENUP COUNTY, KENTUCKY - A RESOURCE PROFILE

Location

Greenup County is located along the Ohio River in northeastern Kentucky. It is bordered by Boyd, Carter, and Lewis Counties on the south and west and by Ohio on the north and east. The southeast portion of the county lies in an area of heavy industrialization which is located in the Ashland, Kentucky - Ironton, Ohio area. In addition, Huntington, West Virginia, is approximately 20 miles distant. The northern part of the county extends to Portsmouth, Ohio, while much of western Greenup County is rural, remote and scenic - the perfect setting for Greenbo Lake State Park and the new lodging facilities now under construction.

The Economic Framework

Total employment in Greenup County averaged 5,150 in 1968, with the Chesapeake & Ohio Railway Company providing over 2,000 of these jobs. Manufacturing accounted for some 380 jobs. This figure does not include the 4,900 employees of Armco Steel Corporation, for although a great portion of the production facilities are physically located in Greenup County, employment figures are listed for Boyd County. During the first nine years of the decade manufacturing employment increased by almost 60 percent. Major industrial products are chemicals and refractory products.

Per capita income in the county in 1968 was \$1,501. This figure was well below the Kentucky average, indicating a real potential for economic growth.

The Greenup County labor market area includes Greenup and its three surrounding Kentucky counties. Area employment totaled over 36,000 including nearly 9,200 manufacturing jobs. Area industrial employment has increased by 56 percent since 1959, with sharpest gains in primary metals.

Despite important industrial gains in recent years, the area still has a deficit of nearly 3,000 manufacturing jobs when measured against the national industrial employment-population ratio. This indicates an area where the potential for additional manufacturing is excellent.

Resources for Growth

1. There is a current estimated labor supply of 3,700 men and 4,300 women available for industrial jobs in the Greenup County labor market area. The labor supply will be augmented by some 6,700 young

men and 6,500 young women who will become 18 years of age by 1975. The best possibilities for attracting workers to jobs in Greenup County are along the Ohio River in the northern and eastern part of the county. Commuters to this area could be expected to come not only from Boyd, Carter and Lewis Counties, but also from parts of West Virginia and Ohio.

2. Local water, rail, and air transportation is excellent. Barges carrying ore, coke, and oil to and from the area on the Ohio River are commonplace today. Likewise, the area is a rail center for the Appalachian region. The Chesapeake & Ohio Railway maintains an enormous car shop and classification facility near Raceland, in Greenup County. The C & O tracks stretch along the south shore of the Ohio River while the Norfolk & Western Railway tracks run along the northern shore. Commercial air service is available at Portsmouth, Ohio, and Kenova, West Virginia, only minutes away. Although the Ashland Airport is noncommercial, the runways are capable of accommodating small jet aircraft. Upon completion of the proposed highway construction and renovations, the Greenup County area will be connected to the state's highway network and Interstate 64 via four-lane Highway U. S. 23.

3. Energy - both gas and electricity - is available in large quantity. In most communities, water is adequate to accommodate future industrialization. In communities where water is inadequate for industrial growth, new water systems and improvements are now under construction or in the planning stages.

4. Industrial Sites - Greenup County has nine available industrial sites with all utilities.

5. Education - Greenup County is located within 50 miles of two senior colleges and three university extension colleges. Marshall University is located in Huntington, West Virginia, approximately 20 miles distant, and Morehead State University is located in Morehead, Kentucky, some 50 miles from Greenup County. Ashland Community College, an extension of the University of Kentucky, is located in neighboring Boyd County, while extensions of Ohio University are located across the river in Ironton and Portsmouth, Ohio.

Community Programs for Improvement

The communities of Greenup County have aggressively sought ways to provide better and more modern facilities for their residents and to increase their attractiveness to industry.

During recent years, the City of Russell has experienced tremendous growth - new subdivisions, schools, and shopping and banking facilities. The city has recently completed construction of a \$300,000 addition to its municipal building.

Flatwoods, like Russell, has experienced a tremendous growth in recent years. This growth has brought about the development of new subdivisions, the expansion of business facilities, and the construction of a new upper level elementary school at the cost of \$1,150,000. A new U. S. Post Office is nearing completion; the present building will be converted into a library.

The community of Raceland has recently completed its program for improving its war memorial park. Plans for the future include a program of slum clearance within the city limits.

Worthington has also experienced a spurt of growth in recent years. A new subdivision, business and recreational facilities (including a new boat dock and picnic area) have resulted from this growth. Presently under construction is a new municipal water system. When completed, eight-inch water mains will serve all parts of the city. Industrial lines will be laid to specification directly from the wells. Plans for the future include the construction of an access road from the Ashland Airport, located near Worthington, the improvement of the underpass leading into the city, and the construction of a public swimming pool.

The community of Wurtland, although unincorporated, has shown a progressive spirit. It has recently completed construction of a new water system and a new sewerage system.

The City of Greenup, on the other hand, has just completed its sewerage disposal plant and is planning to construct a new water system. One hundred units of low-rent housing are also in the planning stages.

The City of South Shore has also experienced rapid growth in recent years. New industry, churches, roads, subdivisions, and stores have been constructed to meet the needs of the increasing population.

All the communities have taken steps toward improving water and sewerage facilities to meet the demands of future industrial and residential needs. In addition, a sanitation district has been proposed which will include Bellefonte, Kenwood, part of Russell, and part of Boyd County.

Lodging and restaurant facilities are presently under construction at Greenbo Lake State Park. A new hangar at the Ashland Area Airport has recently been completed.

Recreation, Entertainment and Livability

A wide variety of recreational facilities are available in the Greenup County area. Boating and fishing are excellent along the Ohio and Little Sandy Rivers as well as the numerous creeks which pass through the county. Camping facilities are available at Greenbo Lake State Park, Carter Caves State Park, near Olive Hill, and throughout the Daniel Boone National Forest. Proximity to Ashland, Kentucky, and Huntington, West Virginia, provides the area with a wide variety of entertainment facilities and collegiate athletics.

THE LABOR MARKET

POPULATION TRENDS ^{1/}

Area	1969 (Est.)	1960	1950	Percent Change	
				1960-69	1950-60
Flatwoods	-	3,741	1,578	-	+137.0
Greenup	-	1,240	1,276	-	- 3.0
Raceland	-	1,115	1,001	-	+ 11.5
Russell	-	1,681	1,458	-	+ 1.5
South Shore	2,500	-	-	-	-
Worthington	-	1,235	695	-	+ 77.6
Labor Market Area	122,600	115,333	110,915	+ 5.9	+ 3.8
Greenup County	34,000	29,238	24,887	+16.3	+ 17.5
Boyd County	55,100	52,163	49,949	+ 5.6	+ 4.4
Carter County	20,600	20,817	22,559	- 1.1	- 8.9
Lewis County	12,900	13,115	13,500	- 1.7	- 3.1

GENERAL EMPLOYMENT CHARACTERISTICS ^{2/}

Major Employment Group	1968	1968
	Greenup County	Labor Market Area
TOTAL	5,155	36,291
Agricultural	520	2,769
Nonagricultural	4,635	33,522
Manufacturing	384	9,154
Trade and Services	646	7,266
Government	893	3,959
Contract Construction	615	2,510
Other	2,097	10,633

MANUFACTURING EMPLOYMENT TRENDS BY INDUSTRY
SEPTEMBER 1959 AND 1968 ^{3/}

Industry	Greenup County			Labor Market Area		
	1968	1959	% Change	1968	1959	% Change
TOTAL	384	247	+ 55.5	9,154	4,743	+48.2
Food & kindred products	0	3	-	254	266	- 4.7
Apparel, textiles, leather	0	0	-	1,199	911	+24.0
Lumber & furniture	7	45	-542.9	226	269	-19.0
Printing, publishing, paper	7	5	+ 28.6	194	252	-29.9
Chemicals, petroleum, coal, rubber	118	52	+ 55.9	1,015	747	+26.4
Stone, clay & glass	252	142	+ 43.7	874	1,027	-17.5
Primary metals	0	0	-	5,284	1,178	+77.7
Other	0	0	-	108	93	+13.9

GREENUP COUNTY MANUFACTURING FIRMS,
THEIR PRODUCTS AND EMPLOYMENT ^{4/}

Firm	Product	Employment		
		Total	Male	Female
<u>Greenup</u>				
Greenup News	Newspaper	2	0	2
Edgiel Shepherd Lumber Co.	House, barn framing, crossties	3	3	0
<u>Russell</u>				
W. B. Modern Dairy, Inc.	Milk	17	15	2
<u>South Shore</u>				
Esso Ramtite Co.	Fire clay, plastic refractories	40	40	0
Hooker Chemical Co.	Phenol, chemical coke	74	70	4
Chas. Taylor Sons, Inc.	Special refractories	200	200	0
Columbia Hydrocarbon	Fractionation plant	20	20	0
<u>Wurtland</u>				
E. I. duPont de Nemours & Co.	Sulfuric acid	17	17	0
E. I. duPont de Nemours & Co.	Water dispersed polymers	(under construction)		

WAGE RATES FOR SELECTED OCCUPATIONS
GREENUP, KENTUCKY ^{5/}

Classification	Rate Per Hour		
	Starting	Maximum	Prevailing
<u>Production Employees</u>			
Assembler	\$2.70	\$3.40	\$3.05
Inspector	2.70	3.40	3.05
Production Laborer	1.90	2.40	2.20
Welder, Arc or Acetylene (Class-A)	2.70	3.40	3.05
<u>Service Employees</u>			
Electrician (Class-A)	\$2.75	\$5.30	\$4.00
Laborer	1.60	3.35	2.10
Machinist	2.70	3.40	3.05
Mechanic, Maintenance	2.70	3.40	3.05
Truck Driver, Industrial (Class-A)	1.60	4.50	3.00
<u>Office Employees</u>			
Bookkeeper	\$1.60	\$2.50	\$1.90
File Clerk	1.60	2.50	1.90
Receptionist	1.60	2.50	1.90
Secretary	1.60	2.00	1.75
Typist	1.60	2.00	1.75

LABOR ORGANIZATIONS

<u>Union</u>	<u>Representing Workers at:</u>
United Mine Workers of America	Hooker Chemical Company Raceland Car Shops (C & O)
The United Stone and Allied Products Workers of America	Chas. Taylor Sons, Inc. Esso Ramtite Company

CURRENT AND FUTURE LABOR SUPPLY -
GREENUP COUNTY LABOR MARKET AREA

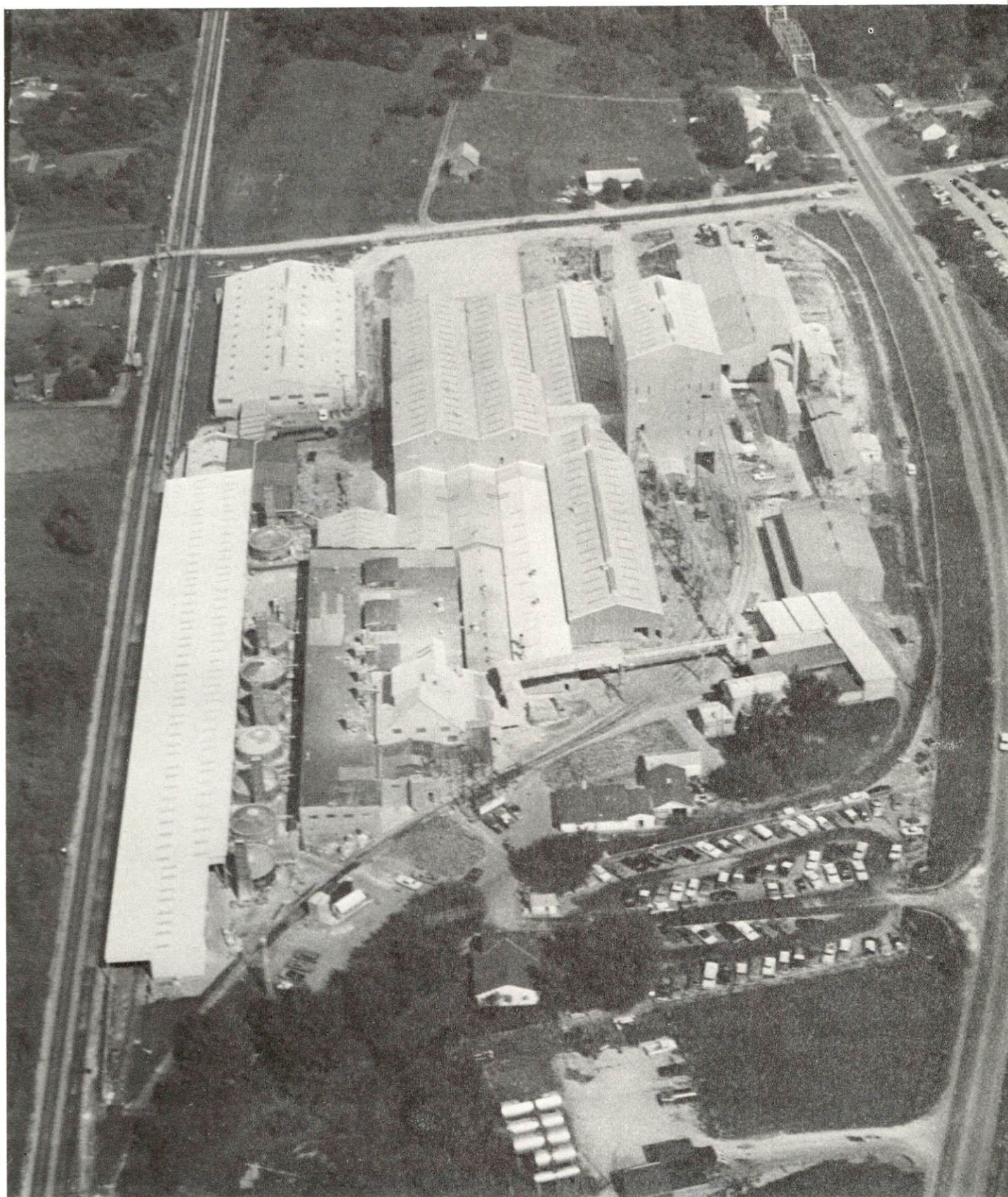
County	1969 <u>6/</u>			Future Labor Supply by 1975 <u>7/</u>		
	Current Labor Supply			(Becoming 18 Years of Age)		
	Total	Male	Female	Total	Male	Female
Labor Market Area	7,988	3,664	4,324	13,115	6,652	6,463
Greenup	2,312	866	1,446	3,570	1,803	1,767
Boyd	2,398	828	1,570	5,590	2,832	2,758
Carter	2,480	1,391	1,089	2,341	1,198	1,143
Lewis	798	579	219	1,614	819	795

TOTAL PERSONAL INCOME 8/

Area	1968	1959	% Change
Greenup County	\$ 50,744,000	\$ 27,111,000	+46.6
Labor Market Area	265,935,000	148,822,000	+44.0
Kentucky	8,360,000,000	4,655,000,000	+79.6

PER CAPITA PERSONAL INCOME 9/

Area	1968	1959	% Change
Greenup County	\$1,501	\$1,008	+32.8
Labor Market Area	\$1,350 to 3,074	\$804 to 1,896	+40.4 to +38.3
Kentucky	\$2,614	\$1,552	+68.4



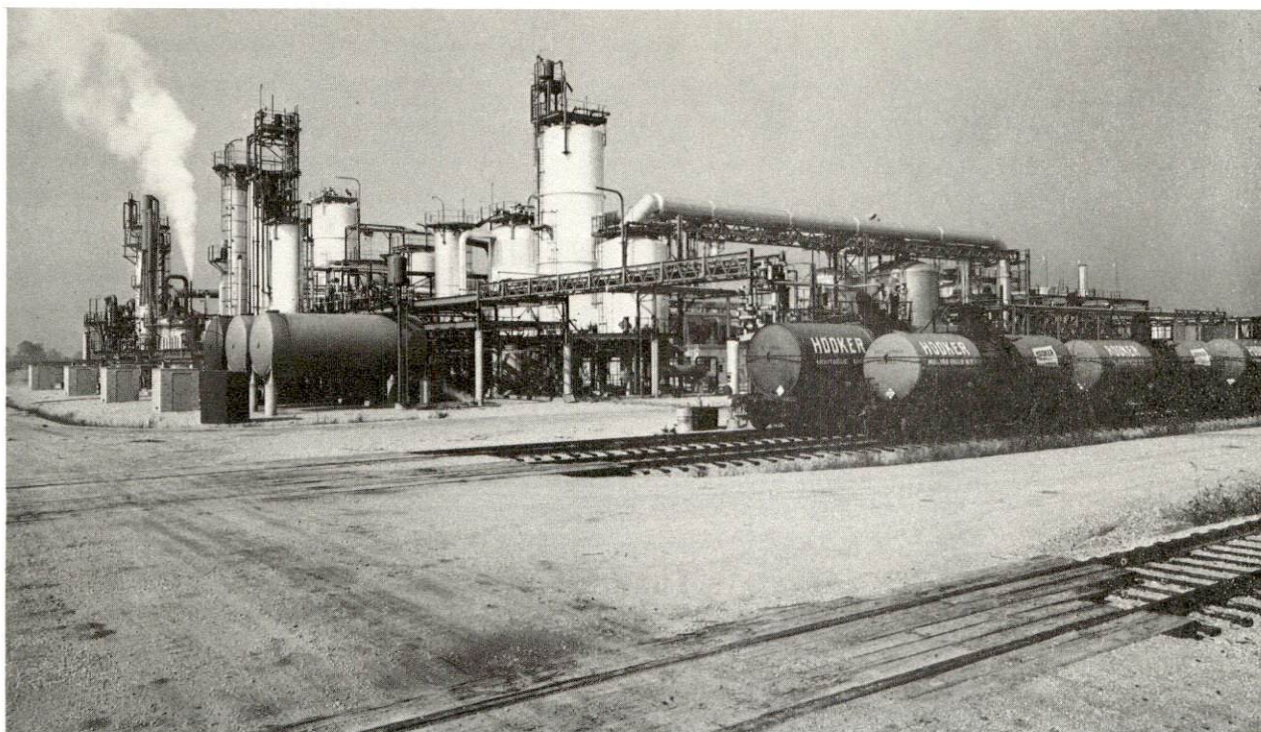
CHARLES TAYLOR SONS, INC.
DIVISION OF NATIONAL LEAD CO.
South Shore



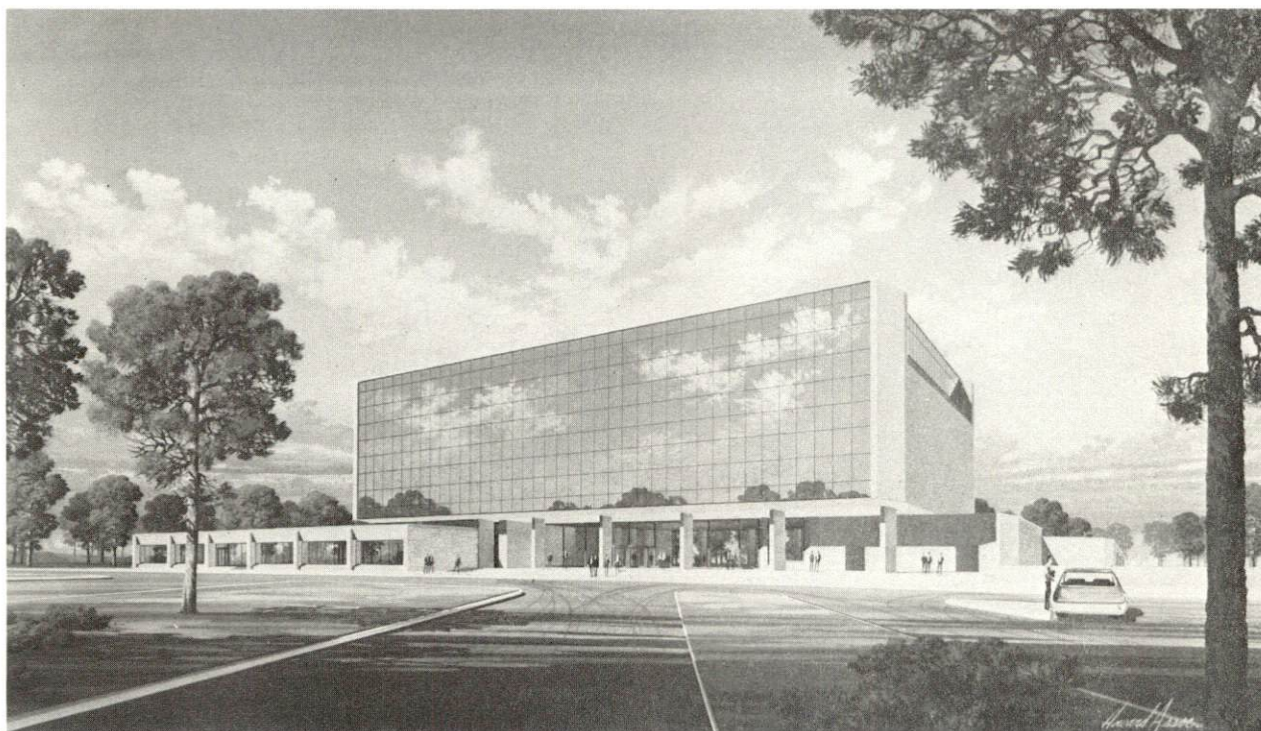
ARMCO STEEL CORPORATION
Ashland Division



FITZPATRICK YARD - Russell
RACELAND CAR YARDS



SILOAM PLANT
HOOKER-DUREZ DIVISION
South Shore



ASHLAND OIL & REFINING CO.
(New headquarters under construction)
Russell

EDUCATION

Public Schools

	<u>Raceland Independent</u>	<u>Russell Independent</u>	<u>Greenup County</u>
Total Enrollment	946	3,179	4,631
Elementary	495	2,262	3,173
High School	451	917	1,458
Student-Teacher Ratio	22-1	25-1	25-1
Elementary	25-1	27-1	25-1
High School	20-1	21-1	25-1
State Rating of High School	Provisional	Comprehensive	Provisional
Other Accreditations	-	Southern Asso- ciation of Colleges and Schools	-
Percent High School Graduates to Colleges	31.1	43.0	34.6
Current Expenditures per Pupil	\$358.50	\$325.69	\$314.88
Bonded Indebtedness	\$34,900	\$2,318,000	-

Vocational Schools

	<u>Nearest Area School</u>	<u>Nearest Extension Center</u>
Location	Ashland	Greenup
Miles Distant	Approximately 5 miles	
Curriculum	Accounting Junior Management, General Clerical, Secretarial- Steno, Certified House- keeping, Clothing Service, Child Care, Practical Nursing, Electronics (Technology), Auto Body Repair, Auto Mechanics, Carpentry, Commercial Foods, Cosmetology, Drafting, Electricity, Machine Shop, Radio and TV Repair, Welding	Accounting Junior Management, Secretarial- Steno, Auto Mechanics, Carpentry, Drafting, Electricity

Colleges and Universities

<u>Name</u>	<u>Location</u>	<u>Enrollment</u>	<u>Highest Degree Conferred</u>
Ashland Community College	Ashland	982	Associate
Morehead State University	Morehead	6,262	Masters
Marshall University	Huntington, West Virginia	7,629	Masters
Ironton Campus, Ohio University	Ironton, Ohio	400	Associate
Portsmouth Campus, Ohio University	Portsmouth, Ohio	800	Associate

TRANSPORTATION

Rail

Lines serving - Chesapeake & Ohio Railway

Services - Passenger, freight, siding space

RAILWAY TRANSIT TIME FROM GREENUP, KENTUCKY, TO: 10/

City	No. of Days		City	No. of Days	
	CL			CL	
Atlanta, Ga.	3		Los Angeles, Calif.	6	
Birmingham, Ala.	3		Louisville, Ky.	1	
Chicago, Ill.	1		Nashville, Tenn.	2	
Cincinnati, Ohio	1		New Orleans, La.	3	
Cleveland, Ohio	3		New York, N. Y.	3	
Detroit, Mich.	2		Pittsburgh, Pa.	3	
Knoxville, Tenn.	3		St. Louis, Mo.	3	

Truck Service

Hogan Storage & Transfer Co.
(Irregular)
O. K. Trucking Company
Point Express, Inc.
Reinhardt Transfer Co.
Smith Transfer Corporation of
Virginia

Home Office

Williamson, West Virginia
Cincinnati, Ohio
Charleston, West Virginia
Portsmouth, Ohio

Staunton, Virginia

HIGHWAY MILES AND TRUCK TRANSIT TIME IN DAYS FROM GREENUP, KENTUCKY, TO SELECTED MARKET CENTERS

City	Highway Miles	Delivery Time <u>11/</u>		City	Highway Miles	Delivery Time	
		LTL	TL			LTL	TL
Atlanta, Ga.	510	3	2	Los Angeles, Calif.	2,311	7	7
Birmingham, Ala.	530	3	2	Louisville, Ky.	205	3	2
Chicago, Ill.	429	3	2	Nashville, Tenn.	310	3	2
Cincinnati, Ohio	135	3	1	New Orleans, La.	843	4	3
Cleveland, Ohio	250	3	2	New York, N. Y.	669	3	2
Detroit, Mich.	332	3	2	Pittsburgh, Pa.	265	3	2
Knoxville, Tenn.	336	3	2	St. Louis, Mo.	469	3	2

AirLocal

Ashland-Boyd County Airport
Location: Worthington, Kentucky
Runways: One paved
Length: 5,000 ft.
Traffic
Control: Tetrahedron
Lighting: Sundown to sunrise
Services: Gas and oil (80-100), A & E
service, charter, flight
instruction, storage

Nearest Commercial

Scioto County Airport
Location: Portsmouth, Ohio
(20 miles distant)
Runways: One asphalt
Length: 4,200 ft.
Lighting: Beacon, runway
Services: Fuel standard 80, 87,
100/30; taxi; courtesy
car; car rental; weather
information available;
major and minor repairs;
storage; hangars; tiedowns;
charter; lodging; Lake Central
Airlines

Nearest Commercial

Tri-State Airport
Kenova, West Virginia
(15 miles distant)
One paved
5,280 ft.
Beacon, runway
80, 87, 100, 130 fuel;
restaurants; storage; car
rentals; limousine and taxi;
Piedmont, Allegheny,
Eastern and Wright Airlines

Bus

Ohio Valley Bus Lines, Trailways Bus Service

Taxi

Flatwoods - Veterans Cab Company; Russell - Russell Cab
Company; South Shore - Haywood Cab Company

POWER AND FUEL

Electricity

Company serving communities of Russell, Raceland, Flatwoods, Worthington, Greenup, South Shore, Bellefonte, and Kenwood; and Greenup County - Kentucky Power Company
Source of power - American Electric Power Company
Total generating capacity - Kentucky Power Company - 1,080,000 KW;
American Electric Power Company - 11,600,000 KW
Industrial rates negotiated by - Kentucky Power Company, Ashland, Kentucky

Natural Gas

Company serving Russell, Flatwoods, Raceland, Riggs, Worthington, Wurtland, Greenup, South Shore, Fullerton, South Portsmouth and Bellefonte - Columbia Gas of Kentucky, Inc.
Source - United Fuel Transmission
Size of transmission lines - 8, 10, and 12 inches
Distribution lines - 2 - 8 inches
BTU content - 1,072; Specific gravity - .60
Distribution pressure - 6 oz. - 125 psi

Rates:

First	1,000 cubic feet	\$2.2892 per 1,000 cubic feet
Next	29,000 cubic feet	.7992 per 1,000 cubic feet
Next	570,000 cubic feet	.6692 per 1,000 cubic feet
All over	600,000 cubic feet	.5292 per 1,000 cubic feet

Minimum bill - \$2.25

Industrial rates may be negotiated.

WATER AND SEWERAGE

Water

Company serving Russell and Bellefonte - municipal
Source - wells
Treatment plant capacity - 1,000,000 gpd
Average daily consumption - 700,000 gallons
Peak daily consumption - 850,000 gallons
Type treatment - chlorination, filtration, coagulation
Storage capacity - 1,500,000 gallons
Average pressure - 8 psi
Average temperature - 17° F.
Size mains - 12, 8, 6, and 4 inches

MONTHLY WATER RATES FOR WHOLESALE AND INDUSTRIAL CONSUMERS

First	3,000 gallons	\$1.50 per 1,000 gallons
Next	3,000 gallons	.74 per 1,000 gallons
Next	69,000 gallons	.54 per 1,000 gallons
Next	150,000 gallons	.49 per 1,000 gallons
Next	225,000 gallons	.48 per 1,000 gallons
Next	300,000 gallons	.46 per 1,000 gallons
Next	750,000 gallons	.45 per 1,000 gallons

Bulk - 39¢ per 1,000 gallons

Company serving Flatwoods, Kenwood, West Russell - municipal
Source - purchased from Russell Water Company
Average daily amount purchased - 426,400 gallons
Size mains - 8, 6, 4, and 2 inches

MONTHLY WATER RATES FOR WHOLESALE AND INDUSTRIAL CONSUMERS

Inside Flatwoods city limits

First	2,000 gallons	\$3.62 Minimum
Next	1,000 gallons	.68 per 1,000 gallons
Over	3,000 gallons	.46 per 1,000 gallons

Outside city limits

First	2,000 gallons	\$5.24 Minimum
Next	1,000 gallons	.68 per 1,000 gallons
Over	3,000 gallons	.46 per 1,000 gallons

Industrial rates may be negotiated.

Company serving Raceland - municipal
 Source - wells
 Treatment plant capacity - 1,152,000 gpd
 Average daily consumption - 173,500 gallons
 Type treatment - chlorination, softening
 Storage capacity - 100,000 gallons
 Average pressure - 75 psi
 Size mains - 8, 6, and 4 inches

MONTHLY WATER RATES FOR WHOLESALE
AND INDUSTRIAL CONSUMERS

Outside city limits

First	2,000 gallons	\$4.32 Minimum
Next	1,000 gallons	.99 per 1,000 gallons
Next	20,000 gallons	.63 per 1,000 gallons
Next	150,000 gallons	.54 per 1,000 gallons
Over	173,000 gallons	.45 per 1,000 gallons

Inside city limits

First	2,000 gallons	\$1.89 per 1,000 gallons
Next	1,000 gallons	.99 per 1,000 gallons
Next	20,000 gallons	.63 per 1,000 gallons
Next	150,000 gallons	.54 per 1,000 gallons
Over	173,000 gallons	.45 per 1,000 gallons

Industrial rates may be negotiated.

Company serving Worthington - municipal
 Source - wells
 Treatment capacity - 200,000 gpd
 Average daily consumption - 85,000 gallons
 Peak daily consumption - 100,000 gallons
 Type treatment - chlorination
 Storage capacity - 100,000 gallons
 Average pressure - 60 psi
 Size mains - 6 inches

MONTHLY WATER RATES FOR WHOLESALE
AND INDUSTRIAL CONSUMERS

First	2,000 gallons	\$1.50 per 1,000 gallons
Next	1,000 gallons	.60 per 1,000 gallons
Next	20,000 gallons	.40 per 1,000 gallons
Over	23,000 gallons	.35 per 1,000 gallons

Company serving Wurtland - Wurtland Water District
 Source - wells
 Treatment plant capacity - 30,000 gpd
 Average daily consumption - 25,000 gallons
 Peak daily consumption - 25,000 gallons
 Type treatment - chlorination, potash
 Storage capacity - 180,000 gallons
 Average pressure - 70 psi
 Size mains - 8 and 6 inches

MONTHLY WATER RATES FOR WHOLESALE
AND INDUSTRIAL CONSUMERS

First	2,000 gallons	\$4.50 Minimum
Next	2,000 gallons	2.00 per 1,000 gallons
Next	5,000 gallons	1.50 per 1,000 gallons

Industrial rates may be negotiated.

Company serving Greenup - Greenup Water Commission
 Source - wells
 Treatment plant capacity - 144,000 gpd
 Type treatment - chlorination
 Storage capacity - 75,000 gallons
 Average pressure - 120 psi
 Size mains - 6, 4, 2 inches

MONTHLY WATER RATES FOR WHOLESALE
AND INDUSTRIAL CONSUMERS

First	2,000 gallons	\$3.50 Minimum
Next	2,000 gallons	1.30 per 1,000 gallons
Next	4,000 gallons	1.00 per 1,000 gallons
Next	4,000 gallons	.70 per 1,000 gallons
Over	12,000 gallons	.50 per 1,000 gallons

Company serving South Shore - South Shore Water Works Co.
 Source - deep wells
 Treatment plant capacity - 500,000 gpd
 Average daily consumption - 300,000 gallons
 Peak daily consumption - 306,000 gallons
 Type treatment - chlorination, sedimentation
 Storage capacity - 198,000 gallons
 Average pressure - 70 psi
 Average temperature - 54°
 Size mains - 8, 6, and 4 inches

MONTHLY WATER RATES FOR WHOLESALE
AND INDUSTRIAL CONSUMERS

First	1,000 gallons	\$2.40 Minimum
Next	9,000 gallons	1.00 per 1,000 gallons
Next	20,000 gallons	.50 per 1,000 gallons
Over	30,000 gallons	.25 per 1,000 gallons

Surface water sources - Ohio River and Tygarts Creek

Average discharge - unlimited supply along the Ohio River

Expected ground water yield - northeast corner - 50 - 200 gpm;
balance - 5 - 50 gpm

Yield along main streams - 50 - 100 gpm along the Ohio River

Sewerage

Company serving Flatwoods - municipal

Design capacity - 1,000,000 gpd

Average daily flow - 460,000 gallons

Treatment - primary

Type treatment - aerobic digester

Treated effluent discharged into - Ohio River

Size of sanitary mains - 8, 12, and 15 inches

Rates - 85 percent of water bill

Company serving Raceland - municipal

Design capacity - 200,000 gpd

Average daily flow - 100,000 gallons

Treatment - primary and secondary

Type treatment - lime, chlorination

Treated effluent discharged into - Pond Run Creek

Size of sanitary mains - 12 and 8 inches

Size of storm mains - 18, 16, and 12 inches

Rates - no charge

Company serving Worthington - municipal

Design capacity - 200,000 gpd

Average daily flow - 85,000 gallons

Treatment - primary

Type treatment - aeration

Treated effluent discharged into - Ohio River

Size of sanitary mains - 8 and 12 inches

Size of storm mains - 12-inch

Rates - 85 percent of water bill

Company serving Wurtland - Wurtland Water District
Design capacity - 150,000 gpd
Number of customers - 280
Treatment - secondary
Type treatment - extended aeration
Treatment effluent discharged into - Newland Branch
Size of sanitary mains - 12-inch
Rates - 100 percent of water bill

Company serving Greenup - municipal
Design capacity - 200,000 gpd
Average daily flow - 75,000 gallons
Treatment - primary and secondary
Type treatment - aeration, chlorination
Treated effluent discharged into - Little Sandy River
Size of sanitary mains - 8 and 10 inches
Size of storm mains - 8 inches
Rates - 50 percent of water bill

Company serving South Shore - municipal
Design capacity - 210,000 gpd
Average daily flow - 90,000 gallons
Treatment - primary and secondary
Type treatment - aerobic digester, chlorination
Treated effluent discharged into - Ohio River
Size of sanitary mains - 8 inches
Rates - 100 percent of water bill

LOCAL GOVERNMENT

City

Bellefonte

Structure - Chairman, Board of Trustees - 2-year term; 5 trustees -
2-year terms

Budget, 1969 - General Fund \$9,000

Russell

Structure - Mayor - 4-year term; 6 councilmen - 2-year terms

Budget, 1968 - General Fund \$64,430.98; Water Fund - \$130,795.98;
Sewer Fund - \$6,146.02

Fees and licenses - range from \$10 to \$35 annually

Flatwoods

Structure - Mayor - 4-year term; 6 councilmen - 2-year terms

Budget, 1968 - General Fund \$205,224.60; Water and Sewer Fund -
\$201,070.54

Fees and licenses - business, range from \$12.50 to \$50 annually

Raceland

Structure - Mayor - 4-year term; 6 councilmen - 2-year terms

Budget, 1969 - General Fund \$780,000

Fees and licenses - \$15 annually

Worthington

Structure - Mayor - 4-year term; 6 councilmen - 2-year terms

Budget, 1968 - General Fund \$21,597.19; Water and Sewer Fund -
\$22,956.98

Fees and licenses - none

Greenup

Structure - Mayor - 4-year term; 6 councilmen - 2-year terms

Budget, 1968 - General Fund \$32,176.49

Fees and licenses - range from \$10 to \$25 annually

South Shore

Structure - Chairman, Board of Trustees - 2-year term; 4 trustees -
2-year terms

Budget, 1968 - General Fund \$30,096.47

Fees and licenses - range from \$10 to \$25 annually

County

Structure - County judge - 4-year term; 1 magistrate - 4-year term
Budget, 1969-70 - General Fund \$272,800; Road Fund \$21,000; Timber
Fund - \$1,500

Assessed Value of Property - 1969

<u>Classes of Property*</u>	<u>Greenup County</u>
Real Estate	\$131,014,900
Tangibles	23,106,214
Public Service	26,784,575

Local General Property Tax Rates Per \$100 of Assessed Valuation - 1969 ^{12/}

<u>Taxing Unit**</u>	<u>Russell</u>	<u>Flatwoods</u>	<u>Raceland</u>	<u>Worthington</u>
State	\$.015	\$.015	\$.015	\$.015
County	.144	.144	.144	.144
School	.713	.713	.298	.298
City	.275	.250	.1605	.170
Total	\$1.147	\$ 1.122	\$.6175	\$.627

<u>Taxing Unit</u>	<u>Greenup</u>	<u>South Shore</u>	<u>Greenup County</u>
State	\$.015	\$.015	\$.015
County	.144	.144	.144
School	.608	.608	.608
City	.275	.165	
Total	\$1.042	\$.932	\$.767

Planning and Zoning

South Shore

Plans completed - Map Studies, Existing Land Use Analysis, Subdivision
Regulations

Flatwoods

Plans completed - Comprehensive Plan, Fringe Area Study, Zoning
Ordinance, Public Improvements Program, Capital Improvements Budget

Greenup County

Plans completed - Base Map, Existing Land Use Analysis

*Property assessed at 100 percent of fair value.

**Manufacturing machinery, raw materials inventories and goods in process
inventories are not subject to local tax. State rate is only \$.15 per \$100.

Safety

<u>Police</u>	<u>Russell</u>	<u>Flatwoods</u>	<u>Raceland</u>
Total staff	4	4 regular 3 part-time	3 regular 3 extra
Radio-patrol cars	2	2	1
Other equipment		base radio station serving Flatwoods, Worthington, Raceland and Russell Police Departments	

<u>Police</u>	<u>Worthington</u>	<u>Greenup</u>	<u>South Shore</u>	<u>Greenup County</u>
Total staff	4	2	3	6
Radio-patrol cars	1		2	
Other equipment			relay station	

<u>Fire</u>	<u>Wurtland</u>	<u>Russell</u>	<u>Flatwoods*</u>	<u>Raceland</u>
American Insurance				
Assoc. Fire Rating	9	4	7	7
Volunteers	20	24	30	30
Equipment:				
1,500 gpm pumers	1			
1,350 gpm pumers			1	
1,000 gpm pumers			1	
750 gpm pumers		1		
500 gpm pumers		1	1	2
Fully-equipped				
rescue truck				1
Resusitator	1			
Additional equipment			emergency equipment	

*The Flatwoods Fire Department has been designated as one of Kentucky's top ten volunteer fire departments by the Kentucky Department of Public Safety in 1969.

<u>Fire</u>	<u>Worthington</u>	<u>Greenup</u>	<u>South Shore</u>
American Insurance			
Assoc. Fire Rating	7	7	8
Volunteers	21	15	20
Equipment:			
1,500 gpm pumpers			1
1,200 gpm pumpers			1
500 gpm pumpers		1	
1,500-gallon tanker			1
Extra 150-gallon tank for brush fires	1		
Resusitator		1	
1,600-gallon tanker		1	
Tank truck with portable pump		1	

Sanitation

	<u>Russell</u>	<u>Flatwoods</u>	<u>Raceland</u>
Type service	private contractor	private contractor	private contractor
Cost (residential) (business)	\$1.25 per mo. varies accord- ing to volume	\$2 per mo. varies accord- ing to volume	\$2 per mo. varies accord- ing to volume
Collection frequency (residential) (business)	weekly weekly	weekly as needed	weekly weekly
Trash pickup	as needed	-	-
Disposal method	land fill	land fill	land fill

	<u>Worthington</u>	<u>Greenup</u>	<u>South Shore</u>
Type service	private contractor	private contractor	private contractor
Cost (residential) (business)	\$1.75 per mo. varies accord- ing to volume	\$2 per mo. varies accord- ing to volume	\$2 per mo. negotiated
Collection frequency (residential) (business)	weekly as needed	weekly weekly	weekly as needed
Trash pickup	as needed	-	weekly
Disposal method	land fill	land fill	land fill

HEALTH

Hospitals

	<u>Number</u>	<u>Beds</u>
General hospitals - Bellefonte	1	123
General hospital facilities - X-ray, surgery, outpatient, emergency, EKG, and pharmacy		
Medical staff - 17 doctors on the active staff, 19 doctors on the courtesy staff, 35 registered nurses, 15 licensed practical nurses		

Nursing Homes

	<u>Number</u>	<u>Beds</u>
Extended care homes	1	19
Personal care homes	2	93

Public Health

Facility - Greenup County Health Department

Staff - Receptionist, clerk, 3 registered nurses, and sanitarian

Budget, 1969-70 - \$60,248

OTHER LOCAL FACILITIES

Communications

Telephone - General Telephone Company

Services - extended services to the northern section of the county,
standard services and direct dialing to the southern section

Telegraph - The nearest telegraph office is located in Ashland, Kentucky
(a toll-free call from most parts of Greenup County).

Postal

Second-class U. S. Post Office at Russell

Mail received - 4 times per day

Mail dispatched - 4 times per day

Second-class U. S. Post Office at Flatwoods

Mail received - 3 times per day

Mail dispatched - 2 times per day

Second-class U. S. Post Office at Raceland

Mail received - 2 times per day

Mail dispatched - 2 times per day

Third-class U. S. Post Office at Worthington

Mail received - 3 times per day

Mail dispatched - 2 times per day

Second-class U. S. Post Office at Greenup

Mail received - 2 times per day

Mail dispatched - 2 times per day

Second-class U. S. Post Office at South Shore

Mail received - 2 times per day

Mail dispatched - 2 times per day

Newspaper weeklies - The Greenup News, The Russell Times

Circulation - 3,524 and 1,064, respectively

Radio

Stations received from - Ironton and Portsmouth, Ohio; Huntington,
West Virginia; Ashland and Grayson, Kentucky

Television

Cable service - Bishop Cablevision Co.

Reception from - Huntington and Charleston, West Virginia

Kentucky Educational Television - Channel 25, Ashland transmitter

Library Services

Public libraries

Greenup County Public Library

Collection - reference material, children's and adults' reading material

Circulation, 1968 - 44,680 (bookmobile)

Services - bookmobile

Russell Public Library

Size collection - 21,056

Circulation, 1968 - 101,781

Services - bookmobile, records, films, paintings, television

Religious Institutions

Number of churches - approximately 100

Denominations - Methodist, Roman Catholic, Baptist, Church of Christ, Church of God, Pentecostal, Presbyterian, Pilgrim Holiness, Seventh Day Adventist

Financial Institutions

<u>Bank</u>	<u>Statement as of December 31, 1968</u>	
	<u>Assets</u>	<u>Deposits</u>
First and Peoples Bank (Greenup)	\$17,253,293.01	\$15,758,673.91

<u>Savings and Loan Associations</u>	<u>Statement as of June 30, 1969</u>	
	<u>Assets</u>	<u>Shared Accounts</u>
Russell Federal Savings & Loan Association	\$ 6,589,853.38	\$ 5,878,048.31
Home Federal Savings & Loan Association	15,625,562.23	13,578,873.77

Hotels and Motels

Number of hotels and motels - 1

Number of units - 10

Clubs and Organizations

Business and Civic - Jaycees, Kiwanis, Lions, Optimist, Rotary,
Greenup County Peace Officers Association

Fraternal - American Legion, Masonic Lodge

Women's - Eastern Star, Homemakers, Garden Clubs

Youth - Boy Scouts, Girl Scouts, Brownies, Cub Scouts, 4-H Club,
Little League, Babe Ruth League, Pony League, YMCA, FHA, FFA,
FTA, FBLA

RECREATION

Local

Public Recreation Facilities

Supervised program - 1 (Raceland - in summer only)
Parks - 4
Playgrounds - 17 (at school locations)
Swimming pools - 1
Tennis courts - 1
Baseball diamonds - 2
Football fields - 5 (at school locations)
Other - basketball court, 3 boat docks, public boat launching ramp

Private Recreation Facilities

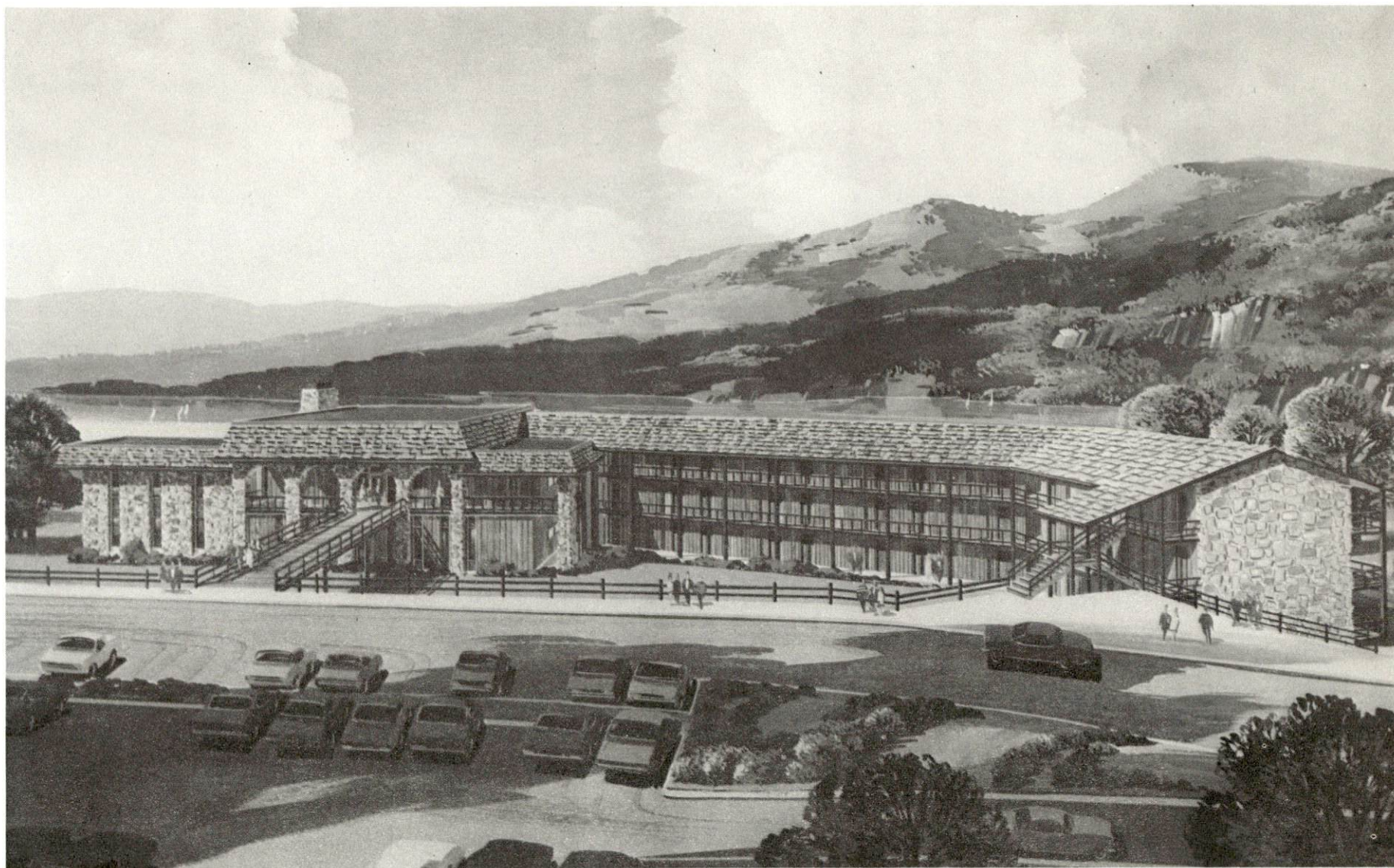
Country clubs - 1
Golf courses - 2
Swimming pools - 2
Movie theaters - 2
Bowling lanes - 1

Tourist Attractions

Greenbo Lake State Park

Area (Within 25 miles)

Carter Caves State Park, Smoky Valley Lake, Olive Hill; Wee House in the Wood, Ashland



GREENBO LAKE STATE PARK LODGE
(Under construction)

AGRICULTURE - NATURAL RESOURCES - CLIMATE

Agriculture 13/

	<u>Greenup County</u>	<u>Labor Market Area</u>
Total land area (acres)	224,640	895,000
Percent of area in farm land	47.3	63.3
Number of farms	930	4,006
Average size of farms (acres)	114.3	141.4
1964 value of all farm products	\$2,274,386	\$11,453,434
Value per farm	\$ 2,446	\$ 2,859
Total crop sales	\$1,200,976	\$ 5,796,158
Total livestock & livestock products	\$1,064,335	\$ 5,135,727
1967 agricultural production included:		
Burley tobacco (lbs.)	1,761,000	9,136,000
Corn (bu.)	168,000	839,000
Cattle and calves (number)	8,400	47,000
Hogs and pigs (number)	1,900	69,000
Milk production, 1966 (lbs.)	5,640,000	55,245,000

Natural Resources

Principal mineral resources	fire clay, limestone, petroleum, coal
Other mineral resources	clays, sand, gravel
Acres of commercial forest land	154,900
Most abundant tree species	red oak, white oak, hickory, yellow pine, yellow poplar, beech, hard and soft maple

Climate 14/

Temperature	
Annual mean	55.0° (30-year record)
Average annual 1968	53.4°
Record highest August 1918	106.0°
Record lowest February 1899	-27.0°
Seasonal heating degree-days	4,754 (30-year record)
Precipitation	
Mean annual total	38.77 inches (30-year record)
Mean annual snow and sleet	24.30 inches (30-year record)
Total precipitation 1968	43.37 inches
Mean number days precipitation	142 (.01 inch or more) (80-year record)
Average number days thunderstorms	44 (76-year record)

HISTORY

Greenup County was established in 1803 as the forty-fifth Kentucky County. It was named in honor of Christopher Greenup, the state's third governor.

Settlers came into Greenup County late in the eighteenth century. South Portsmouth, formerly called Springfield, was the first settlement in the county. Since its site was once occupied by Shawnee Indians who were visited by French traders before the English pioneers came into the area, some of its citizens have claimed it as Kentucky's oldest settlement. The Indians left the area six to eight years before the English came, according to George Croghan's journal dated July 23, 1765. Christopher Gist wrote in his journal on June 29, 1751, that he and some companions visited the town, and on June 11, 1773, Captain Thomas Bullitt and Hancock Taylor, both surveyors, mentioned stopping at the place. By this time there was no village on the south side of the Ohio since the Indians had moved out during the French and Indian War due to fear of Virginia and a devastating flood.

Jesse Boone, one of Daniel Boone's brothers, settled near the town of Greenup where he owned a large tract of land. Daniel often visited him, and on one occasion killed a bear in the vicinity. He carved the sentence "D. Boone kill'd a bar" on a nearby tree which has become famous in history. Jesse and his family lived in Greenup until 1819 when they moved to Missouri.

Greenup, the county seat, was incorporated in 1818 as Greenupsburg and continued under that name until 1872. The town site was chosen in 1803, the year the county was organized, but improvements were slow during the first few years. A temporary frame courthouse was built in 1806 which was used until 1816. Greenup is 478 feet above sea level, and had a population of 1,240 in 1960. It is no longer an important river port, but the county people are attracted to it.

Benjamin F. Bennett established the first flour mill in Greenup County just before the Civil War. Jean Bell Thomas, author of Traipsin Woman, was the originator of the Mountain Folk Song Festival held annually in Ashland for several years. Jesse Stuart, poet-laureate of Kentucky, is a resident of Greenup County. He was educated at Vanderbilt, and served as High School Principal and County Superintendent. He won a Guggenheim Foundation Award and traveled in Europe for a year. He is the author of a number of books, among which are The Thread that Runs So True, Taps for Private Tussey, and Man With A Bull-Tongue Plow. He has lectured at many universities including The American University at Cairo, Egypt.

SOURCES OF INFORMATION

- 1/ U. S. Department of Commerce, Bureau of the Census, Census of Population, 1950, 1960. Department of Rural Sociology, University of Kentucky, Kentucky County Provisional Population Estimates: January 1, 1969, City of Flatwoods.
- 2/ Kentucky Department of Economic Security, Division of Research and Statistics.
- 3/ Kentucky Department of Economic Security, Number of Workers in Manufacturing Industries Covered by Kentucky Unemployment Insurance Law Classified by Industry and County, September 1959, September 1968.
- 4/ Kentucky Department of Commerce, 1970 Kentucky Directory of Manufacturers.
- 5/ Kentucky Department of Economic Security, Division of Employment Service, Ashland office.
- 6/ Kentucky Department of Economic Security, Kentucky Labor Supply Estimates by County, January 1969.
- 7/ Kentucky Department of Commerce, Future Labor Supply by 1975.
- 8/ University of Kentucky, Office of Development Services and Business Research, Total Personal Income for Kentucky.
- 9/ University of Kentucky, Office of Development Services and Business Research, Per Capita Income in Kentucky.
- 10/ Freight Agents, Chesapeake & Ohio Railway Co., Huntington, West Virginia.
- 11/ Point Express, Inc., Charleston, West Virginia.
- 12/ Farmer and Humble, 1969 Kentucky Tax Rate Schedule, Frankfort, Kentucky, 1969.
- 13/ U. S. Department of Commerce, Bureau of the Census, Census of Agriculture, 1964.
- 14/ U. S. Department of Commerce, Environmental Science Services Administration, Climatological Data, 1967.

All other information was obtained from governmental offices, local businesses and organizations.

This copy has been prepared by the Kentucky Department of Commerce,
Division of Research and Planning, and the cost of printing paid from
state funds.