

1969

Industrial Resources: Harrison County - Cynthiana

Kentucky Library Research Collection
Western Kentucky University, spcol@wku.edu

Follow this and additional works at: https://digitalcommons.wku.edu/harrison_cty



Part of the [Business Administration, Management, and Operations Commons](#), [Growth and Development Commons](#), and the [Infrastructure Commons](#)

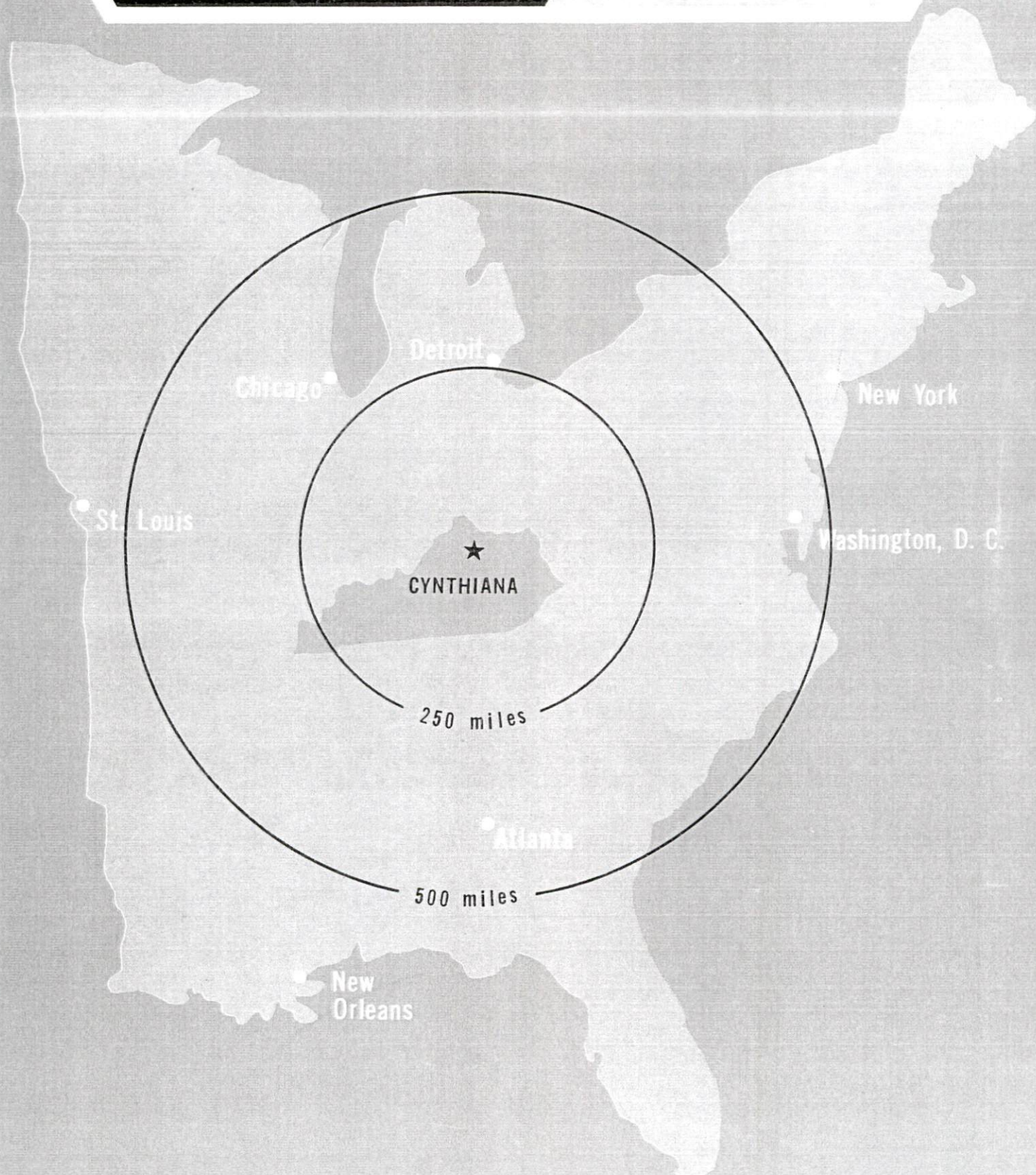
Recommended Citation

Kentucky Library Research Collection, "Industrial Resources: Harrison County - Cynthiana" (1969). *Harrison County*. Paper 15.
https://digitalcommons.wku.edu/harrison_cty/15

This Report is brought to you for free and open access by TopSCHOLAR®. It has been accepted for inclusion in Harrison County by an authorized administrator of TopSCHOLAR®. For more information, please contact topscholar@wku.edu.

INDUSTRIAL RESOURCES

**CYNTHIANA
KENTUCKY**



CYNTHIANA INDUSTRIAL SITES

CYNTHIANA INDUSTRIAL SITES

The Cynthiana-Harrison County Industrial Foundation is the agent for the following sites - contact Joe C. Smith, 1095 Poplar Street, Cynthiana, Kentucky, 234-3641, or William G. Evans of the Chamber of Commerce, P. O. Box 262, Cynthiana, Kentucky, 234-5236. Cost per acre will be furnished upon request by the agent or the Kentucky Department of Commerce.

SITE # 1: ACREAGE AND TOPOGRAPHY: 140 acres, level to gently rolling
LOCATION: Southeast of Cynthiana off State Highway 982, adjoining airport
ZONING: In county, no restrictions
HIGHWAY ACCESS: State Highway 982, south of Cynthiana
RAILROADS: Louisville & Nashville Railroad
WATER: Cynthiana Water Company
SIZE LINE: 16-inch main at water plant, one mile from site
GAS: Columbia Gas of Kentucky, Inc.
SIZE LINE: 6-inch H. P. - 3,000 feet from site
ELECTRICITY: Kentucky Utilities & Harrison County RECC
SEWERAGE: Cynthiana Water Company
SIZE LINE: 10-inch line, one mile from site
OWNERSHIP: Harrison County Fiscal Court

SITE # 2: ACREAGE AND TOPOGRAPHY: 24 acres, level
LOCATION: State Highway 982, just outside south city limits
ZONING: In county, no restrictions
HIGHWAY ACCESS: State Highway 982
RAILROADS: Louisville & Nashville Railroad
WATER: Cynthiana Water Company
SIZE LINE: 16-inch main at water plant, approximately 1,500 feet from site
GAS: Columbia Gas of Kentucky
SIZE LINE: 6-inch H. P.
ELECTRICITY: Harrison County RECC
SEWERAGE: Cynthiana Water Company
SIZE LINE: 16-inch line at water plant, approximately 1,500 feet from site
OWNERSHIP: Harrison County RECC

SITE # 3: ACREAGE AND TOPOGRAPHY: 15 acres, level to gently rolling
LOCATION: West side of US 62, Oddville Road near northeast city limits
ZONING: In county, no restrictions
HIGHWAY ACCESS: US 62, east
WATER: Cynthiana Water Company
SIZE LINE: 8-inch, 200 feet across road
GAS: Columbia Gas of Kentucky
SIZE LINE: 4-inch M. P.
ELECTRICITY: Kentucky Utilities & Harrison County RECC
SEWERAGE: Cynthiana Water Company
SIZE LINE: 8-inch line approximately 200 feet across road
OWNERSHIP: Earl Kendall

SITE # 4: ACREAGE AND TOPOGRAPHY: 121 acres, level to gently rolling
LOCATION: North side of State Highway 356, White Oak Pike, near west city limits
ZONING: In county, no restrictions
HIGHWAY ACCESS: State Highway 356
WATER: Cynthiana Water Company
SIZE LINE: 6-inch
GAS: Columbia Gas of Kentucky, Inc.
SIZE LINE: 4-inch
ELECTRICITY: Harrison County RECC
SEWERAGE: Cynthiana Water Company
SIZE LINE: 8-inch, approximately 1/4 mile from site
OWNERSHIP: Charles Mason

SITE # 5: ACREAGE AND TOPOGRAPHY: 50 acres, level to gently rolling
LOCATION: one mile north on east side of US 62
ZONING: In county, no restrictions
HIGHWAY ACCESS: US 62
WATER: Cynthiana Water Company
SIZE LINE: 8-inch line, approximately 1/2 mile from site
ELECTRICITY: Harrison County RECC
SEWERAGE: Cynthiana Water Company
SIZE LINE: 8-inch line, approximately 1/2 mile from site
OWNERSHIP: George Levi

SITE # 6: ACREAGE AND TOPOGRAPHY: 40 acres, rolling
LOCATION: Southeast of south city limits on Old Lair Road
ZONING: In county, no restrictions
HIGHWAY ACCESS: Old Lair Road
WATER: Cynthiana Water Company
SIZE LINE: 8-inch line, approximately 300 feet in front of site
GAS: Columbia Gas of Kentucky
SIZE LINE: 6-inch M. P.
ELECTRICITY: Harrison County RECC
SEWERAGE: Cynthiana Water Company
SIZE LINE: 8-inch line, approximately 300 feet in front of site
OWNERSHIP: Roy Simpson

LEGEND:
UTILITIES AVAILABLE
W - WATER
G - GAS
E - ELECTRICITY
S - SEWERAGE

SITE-4
121 Ac.
W.G.E.S.

SITE-5
50 Ac.
W.E.S.

SITE-3
15 Ac.
W.G.E.S.

SITE-6
40 Ac.
W.G.E.S.

SITE-2
24 Ac.
W.G.E.S.

SITE-1
140 Ac.
W.G.E.S.

0 1 1 MILE
1000 0 1000 2000 3000 4000 FEET
CONTOUR INTERVAL 10-20 FEET
BASE: USGS 7.5 MINUTE SERIES - 1954-61

INDUSTRIAL RESOURCES
CYNTHIANA, KENTUCKY

Prepared by
The Kentucky Department of Commerce
in cooperation with
Cynthiana-Harrison County Chamber of Commerce

1969

This copy has been prepared by the Kentucky Department of Commerce, Division of Research and Planning, and the cost of printing paid from state funds.

TABLE OF CONTENTS

<u>Chapter</u>	<u>Page</u>
INDUSTRIAL SITES	i
CYNTHIANA, KENTUCKY, A PROFILE	1
THE LABOR MARKET	3
Population	3
General Employment Characteristics	3
Manufacturing Characteristics	3
Labor Organizations	9
Industrial Services	9
Wage Levels	9
Labor Supply	10
Income	12
EDUCATION	13
Elementary and High School	13
Vocational Schools	16
Colleges	16
TRANSPORTATION	17
Rail	17
Highways	17
Truck Service	17
Air	18
Water	18
Other Transportation Services	18
POWER AND FUEL	19
Electricity	19
Natural Gas	19
Liquified Petroleum	20
Coal	20
Fuel Oil	20
WATER AND SEWERAGE	21
Water	21
Sewerage	21

<u>Chapter</u>	<u>Page</u>
AGRICULTURE-NATURAL RESOURCES-CLIMATE	22
Agriculture	22
Mineral Resources	22
Water Resources	22
Forests	23
Climate	23
LOCAL GOVERNMENT	24
Structure	24
Finance	24
Taxes	24
Planning and Zoning	25
Safety	25
Fire	25
Police	26
Sanitation	26
HEALTH	27
Hospitals	27
Nursing Homes	27
Public Health	27
OTHER LOCAL FACILITIES	28
Housing	28
Communication	28
Telephone	28
Telegraph	28
Postal	28
Newspapers	28
Radio	28
Television	28
Libraries	29
Churches	29
Financial Institutions	29
Hotels and Motels	29
Clubs and Organizations	29
Recreation	30
Community Improvements	31
HISTORY	33

CYNTHIANA, KENTUCKY, A PROFILE

Location

Cynthiana, a primarily agricultural community, is the county seat and largest city of Harrison County. It is located in the Blue Grass Region 30 miles north of Lexington, 90 miles east of Louisville, 60 miles south of Cincinnati, and 125 miles west of the Ashland, Kentucky-Huntington, West Virginia area. The interstate highway system comes within 15 miles of the city at Sadieville where there is a local interchange on Interstate 75 (north-south).

For the years 1967 and 1968 Cynthiana won the "Certificate of Excellence" award, which is the second highest award offered by the Kentucky Chamber of Commerce through its annual "All Kentucky Cities" competition.

The Economy

Cynthiana is located in an area in which agriculture, manufacturing, and trade and services provide diversified employment. Expanded manufacturing employment, totaling currently over 1,170, has helped the city grow economically during the 1960's. Since 1957, seven new plants have started operations and nine existing firms have expanded.

In the Cynthiana labor market area, which includes Harrison and adjacent counties, employment totaled 28,953 for 1967 averaging 10,862 in agriculture, 5,660 in manufacturing, 4,525 in trade and services, and 3,395 in government.

Manufacturing employment for 1968 was 5,315 with machinery and metal products (2,220 jobs) and apparel (1,710 jobs) predominant.

Since 1959, there have been 21 new plant locations and 27 expansions in the Cynthiana labor market area.

Labor Supply

There is a current labor supply of 2,650 men and 2,750 women within commuting distance of Cynthiana. It is expected to be augmented by 4,050 young men and 4,030 young women during the next five years as they become 18 years of age.

Industrial Sites and Services

There are six sites available for industrial use varying in size from 15 to 140 acres. Smaller acreages are also available inside the city limits.

The Louisville & Nashville Railroad provides freight service to Cynthiana.

Trucking service is provided by six common carriers. Interstate and intrastate service is available.

Commercial air service is available at Blue Grass Field, 30 miles southwest of Cynthiana in Lexington.

The nearest shipping point for barge transportation is at Frankfort, 39 miles west.

Ample supplies of power and fuel are available. Electric power is provided by Kentucky Utilities Company and the Harrison County RECC. Natural gas is provided to Cynthiana by Columbia Gas of Kentucky, Inc.

Education

The Cynthiana Extension Center of the Central Kentucky Area Vocational-Technical School, to be opened in the Fall of 1969, will teach machine shop work and will be one of the few extension centers in Kentucky to do so. The center will serve Harrison and nearby counties in cooperation with the Area Vocational School in Lexington, Kentucky.

Georgetown College, located 19 miles southwest of Cynthiana in Georgetown, offers a wide curriculum leading to degrees in six areas.

The University of Kentucky is located 30 miles to the south in Lexington. It is a full university, conferring B.A., B.S., M.A., and Ph.D. degrees in a wide variety of fields, as well as professional degrees in Law, Medicine, Dentistry, and Nursing.

Recreation

Recreation in the Cynthiana area is varied due to its location in the north-central Blue Grass Region. Fishing and boating on the Licking River, visiting and sightseeing in the beautiful and historic Bluegrass area, and proximity to such places as Blue Licks Battlefield State Park make recreation educational as well as fun.

THE LABOR MARKET

Population

Cynthiana has grown steadily since 1900. This is very significant since this growth was due to the greater diversity of economic opportunity brought by several roads and more industry and government employment in the area.

The population of Harrison County declined in the first half of the century but is now rising due to increased industrialization.

TABLE 1

POPULATION TREND-CYNTHIANA AND HARRISON COUNTY, KENTUCKY ^{1/}

Year	Cynthiana		Harrison County	
	Population	% Change	Population	% Change
1900			18,570	
1950	4,847		13,736	-26.0
1960	5,641	16.4	13,704	-0.2
1968 ^{2/}			14,500	5.8

General Employment Characteristics

During 1967 total employment in Harrison County averaged 5,437, including agricultural employment of 1,630, manufacturing with 1,173, trade and services with 1,090 and government with 548.

Employment in the labor market area averaged 28,953 including 10,862 in agriculture, 5,660 in manufacturing, 4,525 in trade and services and 3,395 in government.

Manufacturing Characteristics

Harrison County is moving toward increasing manufacturing employment and an improved agricultural industrial balance in the economy. Manufacturing employment totaled 1,329 in June 1968, for a 73.4 percent increase since 1960. Approximately 16.7 percent of the manufacturing employment is female.

Nineteen firms in Harrison County manufacture fourteen different products. The greatest concentration of employment is in metal products although the product mix as shown by Table 2 is diversified.

Eight of the firms employ 50 or more workers and four employ in excess of 100.

Seven firms have located in the sixties. There are two with over 50 employed and one of over 100; including Bundy Corporation and Ladish Company.

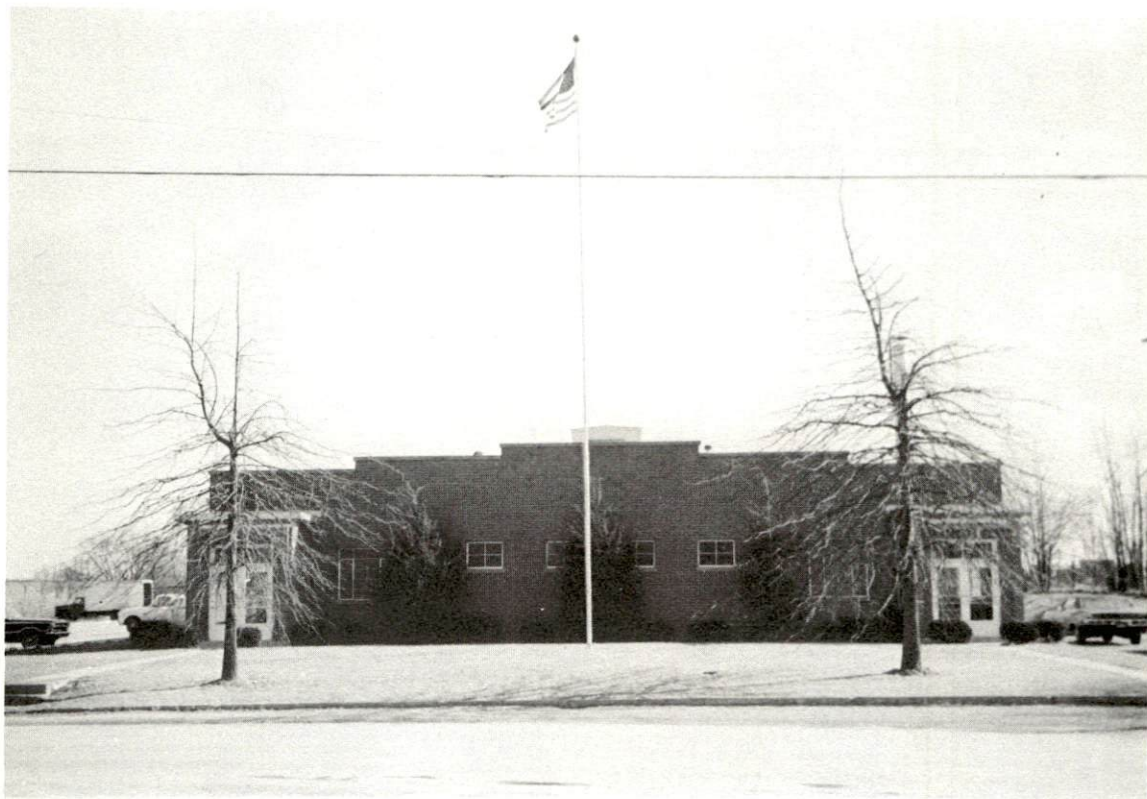
The latest addition is Bundy Corporation with an expected employment of over 50 workers.

TABLE 2
CYNTHIANA MANUFACTURING FIRMS,
PRODUCTS AND EMPLOYMENT ^{3/}

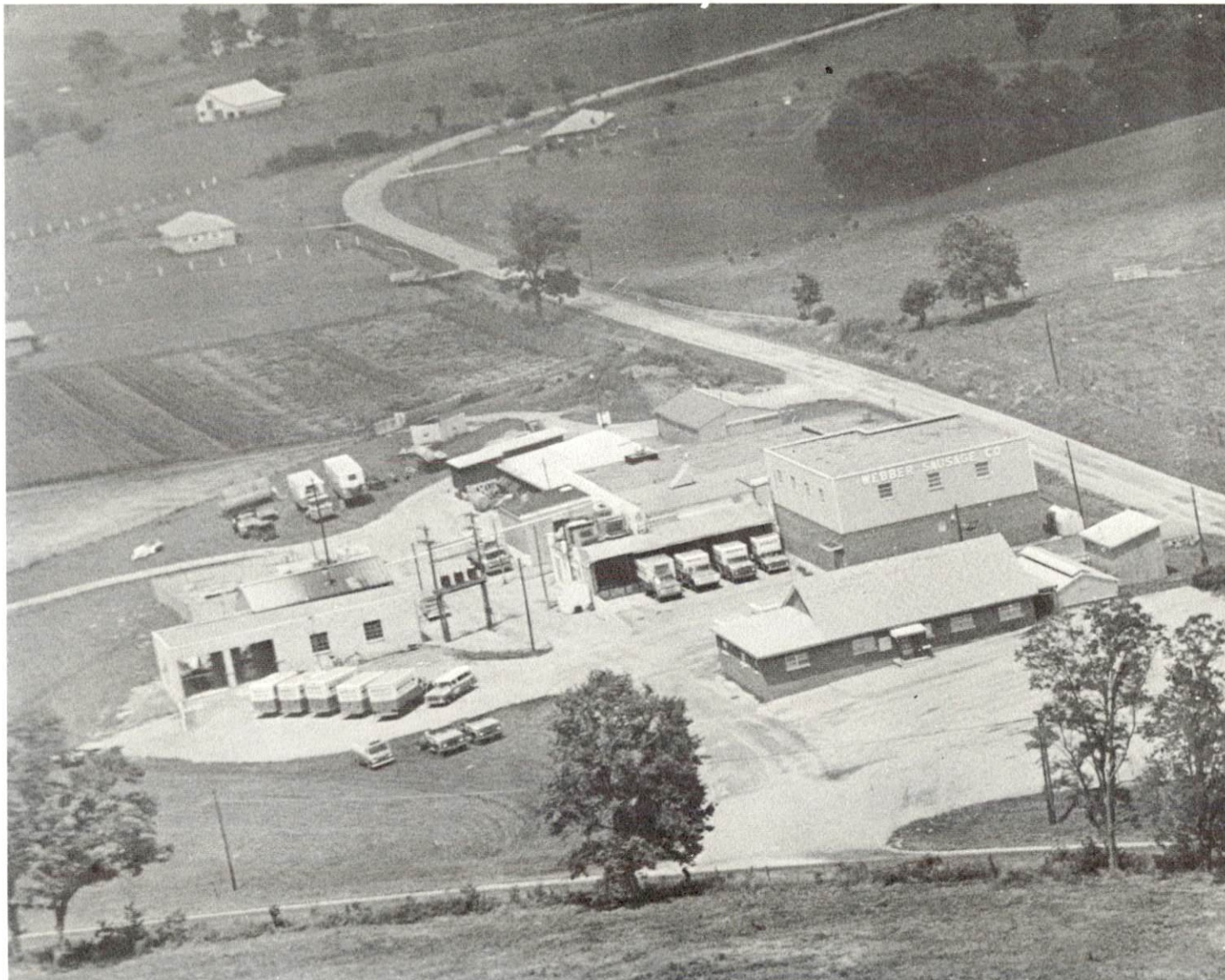
Firm	Product	Employment		
		Total	Male	Female
Best Tool & Die Co.	Tools, dies, special machinery	31	9	22
Blake & Johnson Co.	Screws	81	80	1
Blue Grass Industries	Knitted undershorts	225	20	205 (Est.)
Bluegrass Plant Food	Fertilizer	40	35	5
Bundy Corporation	Steel tubing	48	46	2
Cardinal Chemical Co.	Fertilizer	8	6	2
Cryslers Tool & Die Co.	Tools, dies, fixtures	3	3	0
Cynthiana Publishing Co.	Newspaper, job printing	16	9	7
Cynthiana Ready-Mix, Inc.	Ready mixed concrete	7	6	1
Harrison Machine Shop	Machine shop	2	2	0
Kawneer Co.	Appliance and auto parts	442	423	19
Kentucky Cardinal Dairies, Inc.	Cheddar cheese	34	30	4
Ladish Co.	Stainless steel valves	415	380	35
McLoney's Farm Supply	Feed	8	7	1
S. P. Owen Tobacco Co.	Tobacco processing	129	97	32
Production Plating, Inc.	Electroplating	31	18	13
Joseph E. Seagram & Son, Inc.	Whisky	71	70	1
Webber Sausage Co., Inc.	Sausage and lard	80	75	5
Wells Woodworking	Industrial woodworking	40	40	0
Wolfson Manufacturing Co.	Ladies' sportswear	85	10	75



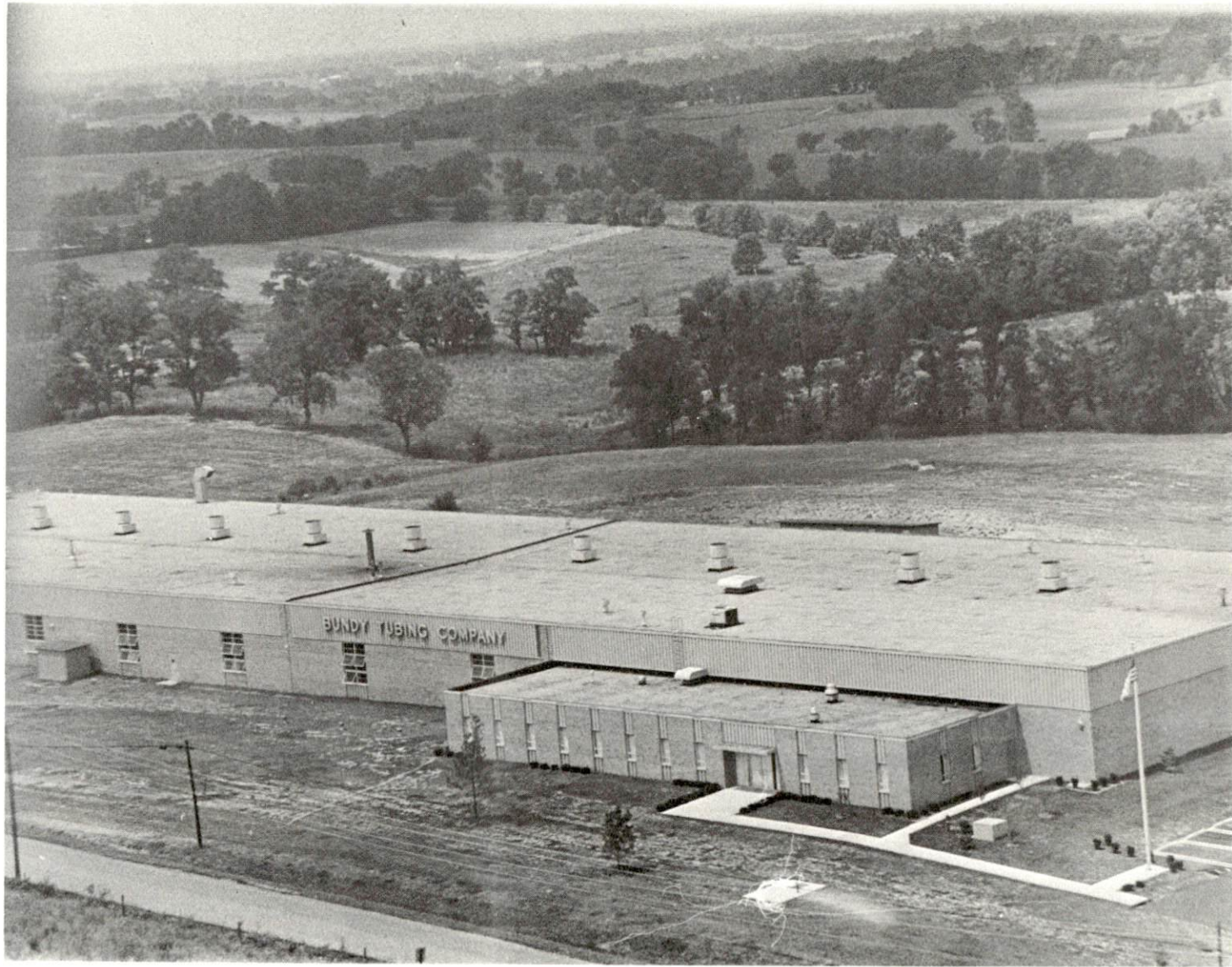
WOLFSON MANUFACTURING CO.



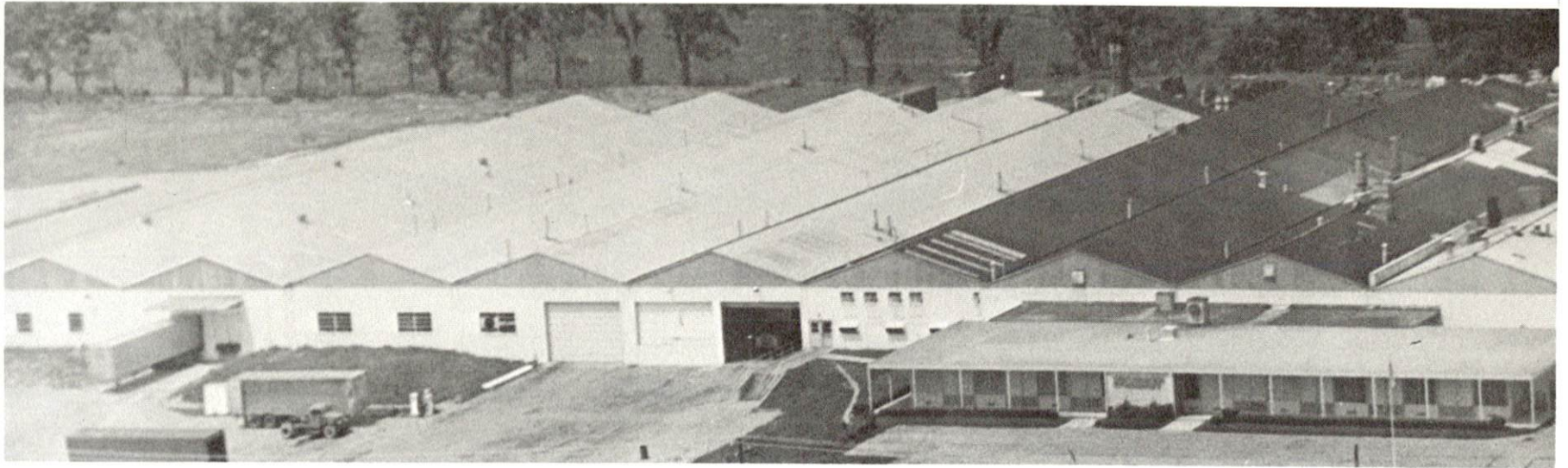
BLUE GRASS INDUSTRIES



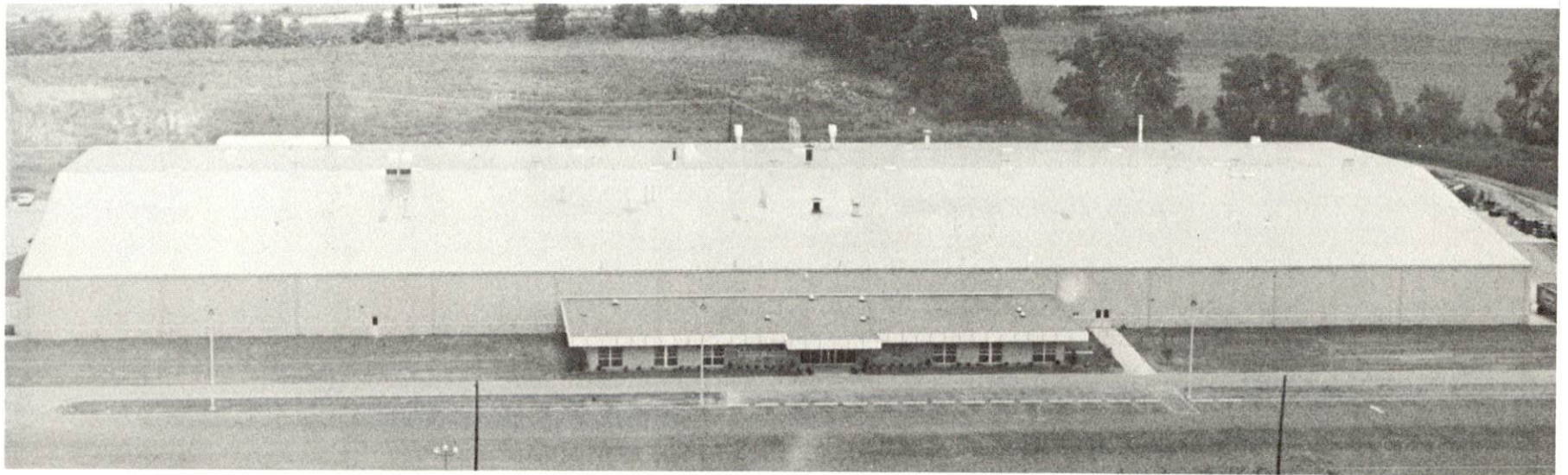
WEBBER SAUSAGE CO., INC.



BUNDY TUBING COMPANY



KAWNEER CO.



LADISH CO.

In the eight-county Cynthiana labor market area, which includes Harrison, Bourbon, Bracken, Grant, Nicholas, Pendleton, Robertson, and Scott Counties, there were 5,315 employed in manufacturing in June, 1968. Sharpest growth since 1960 has been in metal products and apparel.

TABLE 3
MANUFACTURING EMPLOYMENT, CYNTHIANA LABOR MARKET
AREA, JUNE, 1968 ^{4/}

Industry	Employment
TOTAL	5,315
Food and beverages	272
Apparel	1,712
Metal products and machinery	2,219
Chemicals, petroleum, coal and rubber	479
Other	248

Labor Organizations

Workers in the Joseph E. Seagram & Sons plant are represented by the Distillery Workers of America, AFL-CIO, and those at Ladish Company are represented by the United Steel Workers, AFL-CIO.

Industrial Services ^{5/}

Cynthiana has one metal finishing shop, one of thirteen in the state, and two of the 73 machine shops in Kentucky. The new vocational school being constructed in Cynthiana will be one of the few vocational-technical extension centers to teach machine shop work.

Wage Levels

In 1967 the average weekly wage in all industries covered by unemployment insurance in Harrison County was \$98.96 and \$103.17 for manufacturing. Comparable figures for Kentucky were: \$104.50 for all industries; \$115.08 for manufacturing. Other counties in the Harrison County labor market area were below the Kentucky and Harrison County averages leading to the tentative conclusion that workers could be recruited for jobs in Harrison County at or slightly above the minimum wage for production jobs.

Some examples of specific occupational wage rates for the Cynthiana area are shown on the following page.

<u>Production Employees</u>	<u>Wages per Hour ^{6/}</u>	
	<u>Starting</u>	<u>Maximum</u>
Assembler	\$2.00	\$2.35
Drill Press Operator	2.00	2.47
Grinder, Machine	1.85	2.35
Inspector	1.80	2.45
Lathe Operator	1.85	2.60
Machinist, Set Up	2.50	3.50
Polisher and Buffer	1.90	2.35
Production Laborer	1.85	2.20
Punch Press Operator	1.75	2.35
Sprayer or Painter	1.95	2.89
Welder, Arc or Acetylene	1.75	2.50
Sewing Machine Operator	1.60	1.75

Service Employees

Carpenter	\$2.00	\$2.75
Electrician	2.27	3.25
Janitor	1.70	2.14
Laborer	1.70	2.14
Machinist	2.50	3.50
Mechanic, Maintenance	2.25	3.00
Shipping Clerk	1.70	2.60
Truck Driver	1.70	2.35
Tool, Die or Gauge Maker	2.75	4.50

Office Employees

Bookkeeper or Accounting Clerk	\$1.70	\$2.40
Draftsman	2.45	3.25
Key Punch Operator	1.75	2.15
Receptionist	1.70	2.10
Secretary	1.75	2.27
Stenographer	1.70	2.25
Telephone Operator	1.70	2.00
Typist	1.70	2.15

Labor Supply

In June of 1968 a Labor Supply Survey conducted by the Cynthiana-Harrison County Chamber of Commerce and the Kentucky Department of Economic Security indicated that there was a supply of 2,016 men and women who would take industrial jobs in Cynthiana. Of the registrants, 1,180 lived within 10 miles of Cynthiana. An additional 3,000 persons may be

estimated, using available data, to live in the counties surrounding Harrison and be potentially interested in industrial jobs in Cynthiana if they were available. The labor supply is considered to include the unemployed, the underemployed, and those who would enter the labor force if jobs became available.

Workers could be expected to commute to Cynthiana mainly from Bracken, Grant, Nicholas, Pendleton and Robertson Counties in response to job opportunities. However, the number of persons available for jobs in Cynthiana would depend on a number of factors including wage scales and working conditions. Bourbon and Scott Counties also border Harrison County and are also undergoing industrial development.

The following table shows the results of the June, 1968, Cynthiana labor survey:

TABLE 4 7/

NUMBER REGISTERED	
Male	915
Female	1,101
Total	2,016

AGE DISTRIBUTION								
	Under 18	18-19	20-29	30-39	40-45	46-50	51-55	Over 55
Male	52	121	281	167	81	73	62	78
Female	49	99	271	213	159	122	111	77
Total	101	220	552	380	240	195	173	155

EDUCATION						
	Less than 5th Gr.	5th Gr.	9-11	H. S. Grad.	Some Col.	Col. Grad.
Male	75	218	217	302	78	25
Female	58	164	274	471	101	33
Total	133	382	491	773	179	58

DISTANCE FROM CYNTHIANA					EMPLOYED		
	Miles					Yes	No
	0-10	11-20	21-30	Over 30			
Male	479	297	97	42	Male	652	263
Female	701	291	95	14	Female	421	680
Total	1,180	588	192	56	Total	1,073	943

The Cynthiana future labor supply is based on the number of young men and women who will become 18 years of age by 1975, many of whom will enter the labor force. Table 5 below shows the estimated figures:

TABLE 5
FUTURE LABOR SUPPLY
CYNTHIANA LABOR MARKET AREA 8/

County	Future Labor Supply by 1975 (Becoming 18 Years of Age)		
	Total	Male	Female
Labor Market Area	8,080	4,051	4,029
Harrison	1,284	633	651
Bourbon	1,851	907	944
Bracken	687	348	339
Grant	915	458	457
Nicholas	610	310	300
Pendleton	1,096	563	533
Robertson	196	95	101
Scott	1,441	737	704

Income

The total personal income in Harrison County in 1968 was estimated at \$40,017,000. Per capita income was \$2,818 for a gain of \$1,250 during the previous nine years. 9/

EDUCATION

The educational system within the Cynthiana labor market area has the facilities to produce an effective labor force for future industrial growth.

Elementary and High School

The Harrison County School System is composed of three elementary schools with "Standard" ratings; one junior high school with an "Extended" rating, the highest granted by the state; and one high school with a "Comprehensive" rating.

Innovative programs include school-wide special education programs, remedial reading, music, speech and hearing correction, educational television, and programs for orthopedically handicapped children. A pre-school readiness program is also offered. Vocational education is offered to the high school students. A vocational-technical extension center, located in Cynthiana, will open in the Fall of 1969.

Employment for the 1968-1969 school year totals 175 professional and 74 nonprofessional personnel. The special instructional staff includes one elementary music teacher, one elementary instrumental music teacher, one speech and hearing correctionalist, one home and hospital teacher, four remedial reading teachers, three counselors, one social worker, and nine special education teachers. There are also special teachers for the orthopedically handicapped and children with cerebral palsy.

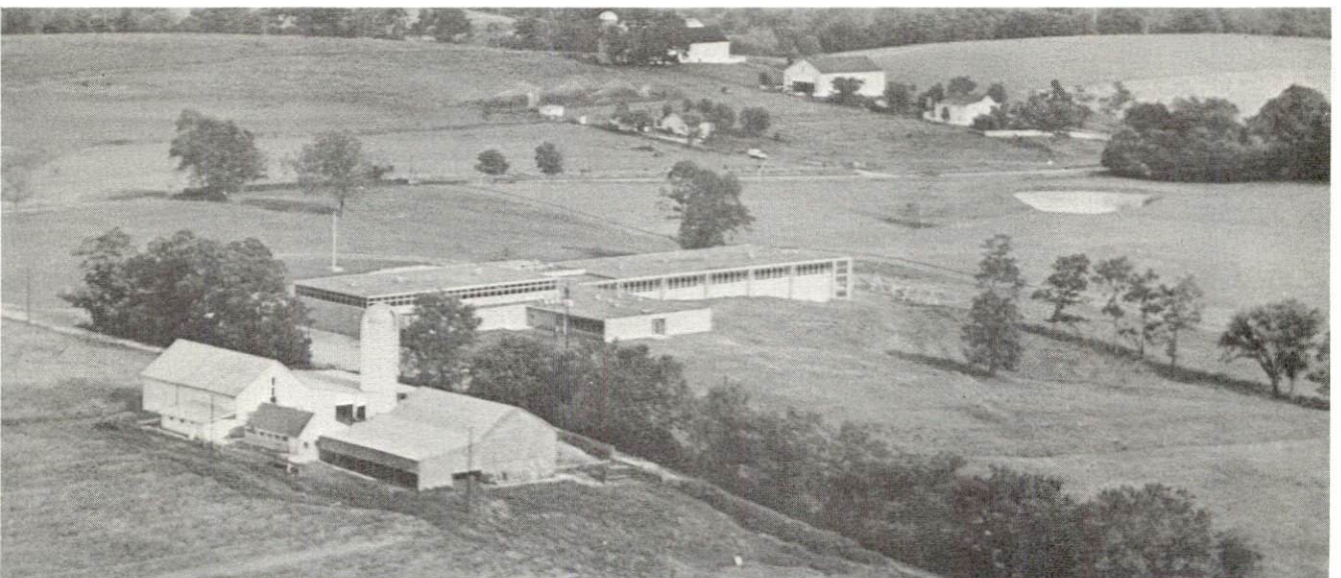
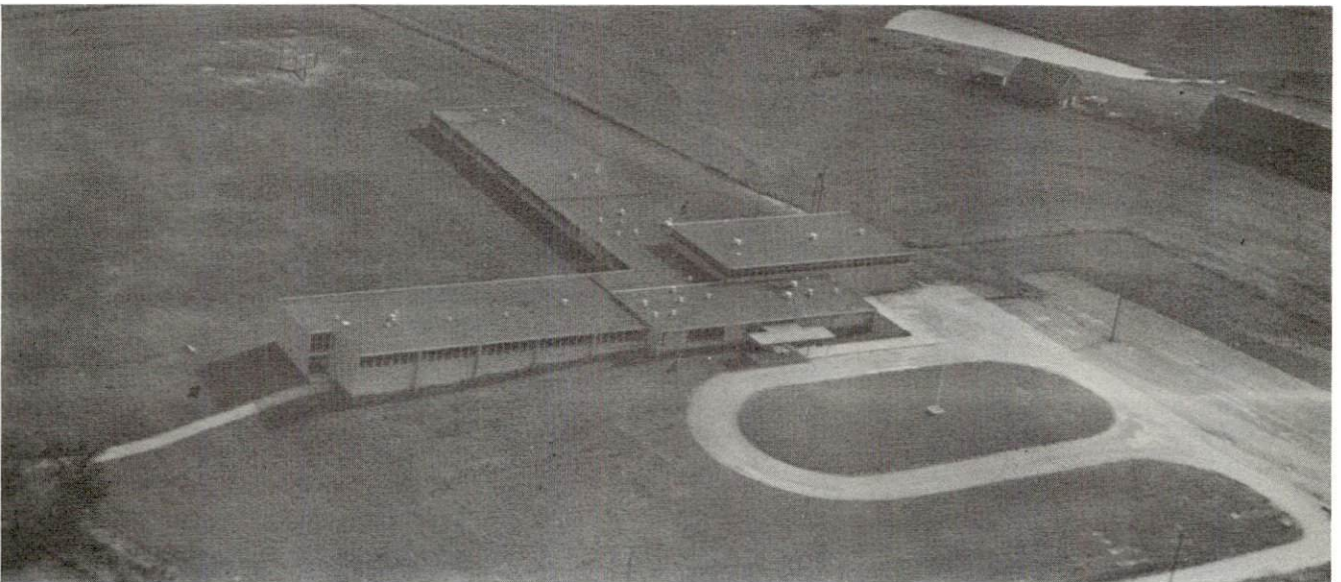
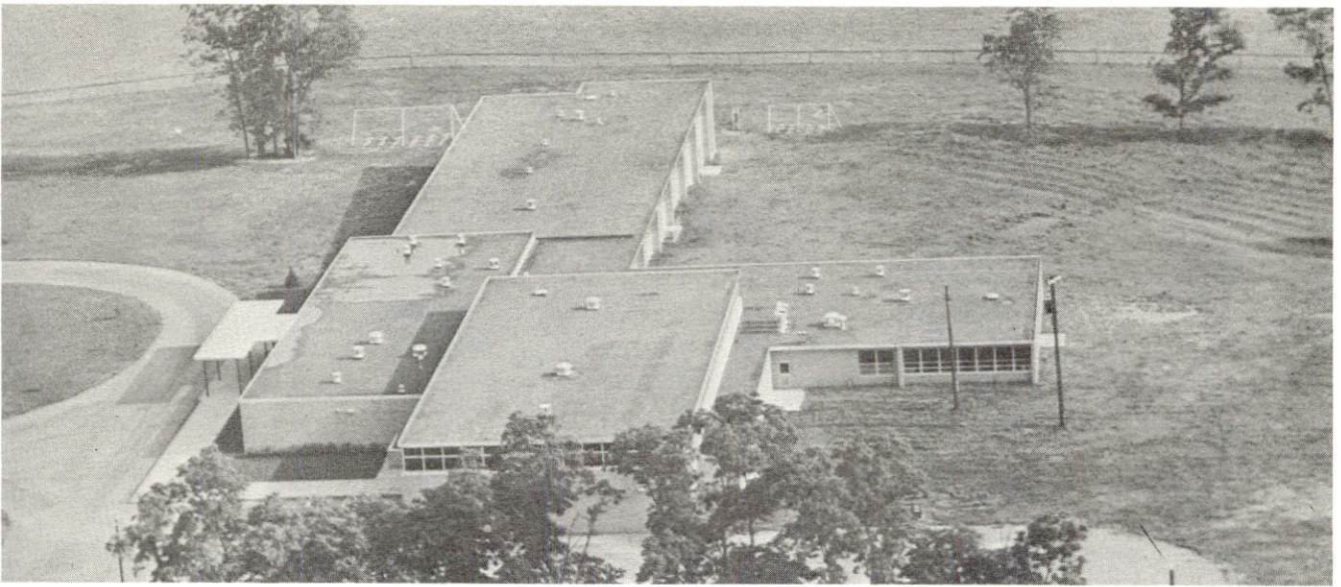
The Harrison County School System has a 1968-1969 budget of \$1,600,000. Bonded indebtedness of the system was \$2,137,000 as of June 30, 1968.

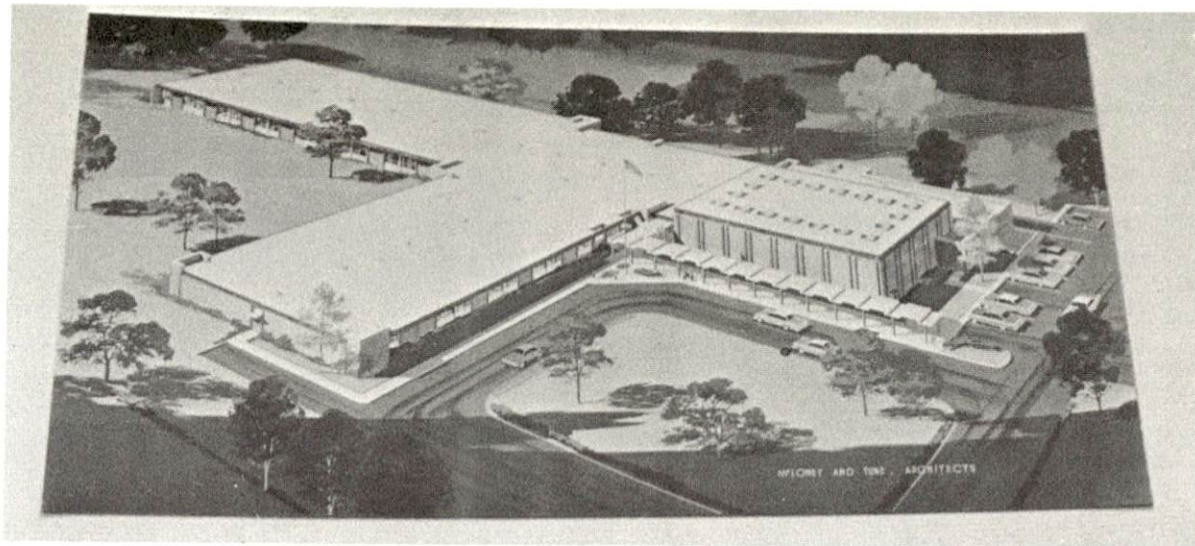
TABLE 6

SCHOOLS, ENROLLMENT, NUMBER OF TEACHERS, STUDENT -
TEACHER RATIO IN CYNTHIANA AND HARRISON COUNTY, 1968 ^{10/}

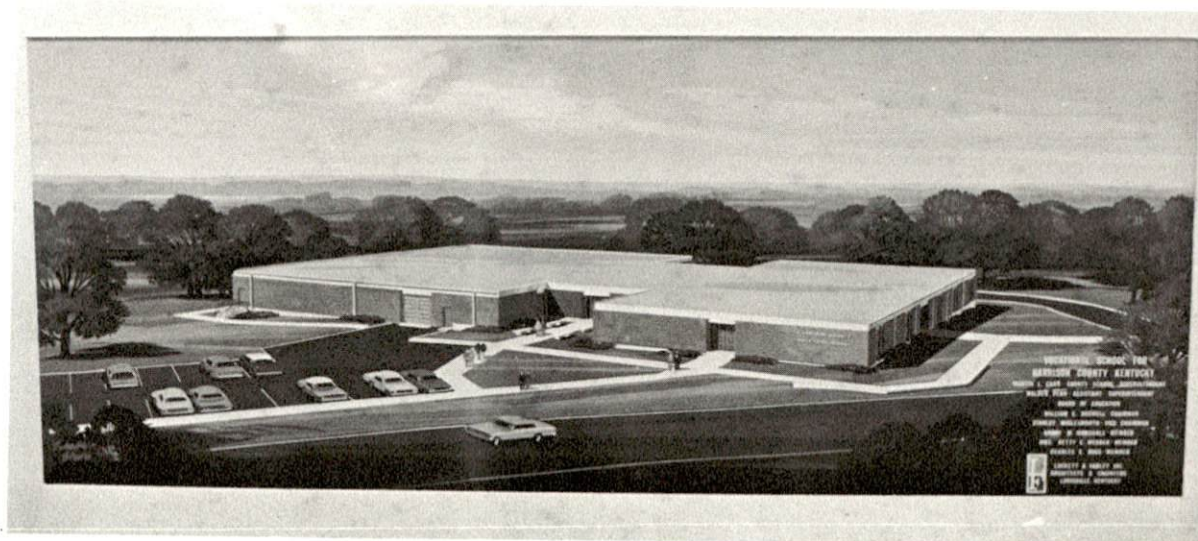
School	Grades	Enrollment	No. of Teachers	Student-Teacher Ratio
Harrison County Elementaries (total)	1- 6	1,665	77	21-1
Harrison County Junior High	7- 8	544	26	20-1
Harrison County High	9- 12	850	45	18-1
Parochial	1- 6	74	3	24-1

NEW ELEMENTARY SCHOOLS





HARRISON COUNTY JUNIOR HIGH



VOCATIONAL-TECHNICAL SCHOOL
CYNTHIANA

Vocational Schools

The new vocational-technical school, located in Cynthiana, will be open to students in Harrison County and the surrounding area starting with the September 1969 school term. Programs offered will include business and office education, welding, building trades, machine shop and drafting, and auto mechanics. This school will be an extension of the Central Kentucky Vocational-Technical School located in Lexington, Kentucky. It will be one of the few in the state offering machine shop instruction.

Colleges

Cynthiana is located near the colleges and the University of Kentucky in the central Blue Grass. Georgetown College, 19 miles away in Georgetown, is fully accredited and coeducational. It is the first Baptist school west of the Alleghenies and occupies a 52-acre campus. Six degrees are conferred by the college.

The University of Kentucky, located in Lexington, 30 miles south of Cynthiana, comprises ten colleges, and a School of Architecture, a Graduate School, a Law School, and a Division of University Extension which offer a wide and varied educational program. It is coeducational and state supported. The University serves the area as a cultural, educational, research, and medical center.

Transylvania College, also in Lexington, confers BA and BS degrees in the usual academic disciplines and prepares students for careers in business, social work or education, granting certificates for both elementary and secondary teachers.

Other institutions of higher learning in the Cynthiana area include:

<u>College or University</u>	<u>Location</u>	<u>Distance</u>
Berea College	Berea, Kentucky	67 miles
Centre College	Danville, Kentucky	68 miles
Northern Community College	Covington, Kentucky	63 miles
Eastern Kentucky University	Richmond, Kentucky	53 miles
Kentucky State College	Frankfort, Kentucky	39 miles
Morehead State University	Morehead, Kentucky	71 miles
University of Louisville	Louisville, Kentucky	90 miles
Thomas More College	Ft. Mitchell, Kentucky	63 miles

TRANSPORTATION

Rail

The Cincinnati Division of the Louisville & Nashville Railroad serves Cynthiana with one northbound and one southbound freight daily. Switching service is available six days a week (holidays excluded) on twelve tracks which can accommodate 100 cars. Package car service is also available. There were 686 inbound and 134 outbound carloads of freight originating and terminating at the L&N Station in Cynthiana during the year 1968.

TABLE 7

RAILWAY TRANSIT TIME FROM CYNTHIANA, KENTUCKY, TO: 11/

City	No. of Days		City	No. of Days	
	CL			CL	
Atlanta, Ga.	3		Los Angeles, Calif.	6	
Birmingham, Ala.	4		Louisville, Ky.	2	
Chicago, Ill.	3		Nashville, Tenn.	2	
Cincinnati, Ohio	1		New Orleans, La.	4	
Cleveland, Ohio	3		New York, N. Y.	4	
Detroit, Mich.	3		Pittsburgh, Pa.	3	
Knoxville, Tenn.	2		St. Louis, Mo.	3	

Highways

Cynthiana is served by U.S. Routes 27 and 62, and Kentucky Routes 32, 36, and 356. Interstate Highway 64 (east-west) is 30 miles south in Lexington, and I-75 (north-south) is 19 miles west at Georgetown.

Truck Service: The following trucking companies serve Cynthiana:

<u>Company</u>	<u>Home Office</u>
Dixie-Ohio Express, Inc.	Akron, Ohio
Ecklar-Moore Express, Inc.	Lexington, Kentucky
Germann Brothers Transportation, Inc.	Aberdeen, Ohio
McLean Trucking Co.	Winston-Salem, North Carolina
Motor Freight Corporation	Terre Haute, Indiana
Turner Expediting Service	Louisville, Kentucky

TABLE 8

HIGHWAY MILES AND TRUCK TRANSIT TIME FROM
CYNTHIANA, KENTUCKY, TO SELECTED MARKET CENTERS ^{12/}

City	Delivery			City	Delivery		
	Highway Miles	Time (Days)	City		Highway Miles	Time (Days)	City
Atlanta, Ga.	428	3	2	Los Angeles, Calif.	2,349	6	5
Birmingham, Ala.	456	3	2	Louisville, Ky.	75	Overnight	
Chicago, Ill.	350	2	1	Nashville, Tenn.	253	2	1
Cincinnati, Ohio	59	Overnight		New Orleans, La.	863	3	2
Cleveland, Ohio	298	2	1	New York, N. Y.	665	3	2
Detroit, Mich.	321	2	1	Pittsburgh, Pa.	333	2	1
Knoxville, Tenn.	233	2	1	St. Louis, Mo.	339	2	1

Air

The Cynthiana-Harrison County Airport has a 3,200 by 75-foot, paved and lighted runway. The airfield is located 1 1/2 miles south of Cynthiana. This airfield can accommodate light aircraft. "Unicom" landing aid is provided.

Cynthiana is 30 miles north of Blue Grass Field in Lexington which is served by Eastern, Delta, Piedmont and Allegheny Airlines with 28 flights daily. There are three paved runways - 5,500 by 150 feet, 3,500 by 150 feet, and 3,500 by 150 feet. One runway is being extended to 6,500 feet to facilitate additional jet service.

The Greater Cincinnati Airport is approximately 65 miles north of Cynthiana.

Water

The nearest barge point serving Cynthiana is Frankfort, situated on the Kentucky River, 34 miles southwest of Cynthiana. A 6-foot navigation channel is maintained by a series of locks and dams from the stream's confluence with the Ohio River at Carrollton, Kentucky, to a point 249 miles upstream. In 1966, cargo shipped on the Kentucky River amounted to 403,275 tons.

Other Transportation Services

The Southern Greyhound Bus Lines serve Cynthiana with five southbound and five northbound buses daily.

Cynthiana is served by Hampton's Cab Company with 6 cabs operating daily from 6 a. m. to 12 midnight.

POWER AND FUEL

Electricity

Kentucky Utilities Company serves approximately 3,600 customers in Cynthiana and the immediate vicinity. The Company supplies adequate electric power to the area with two-way feed by means of a 69 KV transmission line from Georgetown and another 69 KV line from Millersburg. An interconnection with a 69 KV loop-feed jointly owned by East Kentucky RECC and Kentucky Utilities Company is located near Cynthiana.

Kentucky Utilities Company provides electric service in 78 Kentucky counties. The Company has a generating capacity of approximately 740,000 KW in the six generating stations which are located in southeastern, central, and western Kentucky. Additional generating capacity of 427,000 KW is under construction with completion scheduled for May 1971. The Company also has interconnections with other major generating sources which provide a means of interchanging substantial blocks of electricity when desired. Rates for industry will be furnished by the Company's Industrial Development Department in Lexington, Kentucky, or the Kentucky Department of Commerce, Frankfort, Kentucky.

The Harrison County RECC serves 2,090 customers in Harrison County and is supplied by East Kentucky RECC which has a present generating capacity of 276,000 KW and an additional 200,000 KW unit under construction. Industrial rates may be obtained from Harrison County RECC, Cynthiana, Kentucky; East Kentucky RECC, Winchester, Kentucky; or the Kentucky Department of Commerce, Frankfort, Kentucky.

Natural Gas

Natural gas is distributed to 2,437 customers in and around Cynthiana by Columbia Gas of Kentucky, Inc. Its source of supply is the Kentucky Gas Transmission Corporation. Gas is tapped from a 12-inch, 300 psi line, 9 miles from town. The line bringing gas into town is eight inches in diameter and averages 300 psi. Distribution lines are 3, 4, 6, and 8 inches in diameter and pressure is maintained between 4 and 6 ounces. The BTU content per cubic foot is 1,025 and specific gravity is .65. Rates for large industrial users will be furnished by Columbia Gas of Kentucky, Inc., Lexington, Kentucky.

General Service Gas Rates:

First	1 MCF	\$2.0638
Next	49 MCF	.8088 Per MCF
Next	50 MCF	.7688 Per MCF
Next	200 MCF	.7388 Per MCF
All over	300 MCF	.7088 Per MCF

Minimum Bill \$2.03

Liquified Petroleum

There are two liquified petroleum dealers located in Cynthiana.

Coal

Cynthiana is served by the Eastern Kentucky Coal Field. Freight cost for domestic and industrial coal from Hazard to Cynthiana is 336¢ per ton. ^{13/}

Fuel Oil

Kentucky has three fuel oil refineries located in Catlettsburg, Louisville, and Somerset. Kentucky's fuel supply is supplemented by border state operations.

Delivery prices of the various grades may be obtained from the Kentucky Department of Commerce.

WATER AND SEWERAGE

Water

The Cynthiana Water Works, a municipally owned system, has a treatment plant capacity of 3,000,000 gallons per day. Water is drawn from the South Fork of the Licking River and treated by aeration, primary filtration, flocculation, sedimentation, final filtration, and chlorination. The water is distributed to approximately 3,000 customers at an average pressure of 95 psi, through 16-, 10-, and 8-inch mains. Maximum daily use has been 1,700,000 gallons, average daily use is 1,200,000 gallons. Storage facilities consist of a 300,000-gallon standpipe, a 300,000-gallon elevated tank, and a 600,000-gallon clear well.

Current rates are as follows:

	<u>Gallons Per Month</u>	<u>Per M Gallons</u>
First	2,000	\$2.50 Minimum Bill
Next	2,000 - 8,000	.90
Next	8,000 - 20,000	.60
Next	20,000 - 50,000	.45
Next	50,000 - 100,000	.35
Next	100,000 - 1,000,000	.25
All over	1,000,000	.18

Sewerage

The municipal sewerage system, designed to serve a population of 10,000, serves approximately 98 percent of the city with a connected population of 6,450. The plant with a design flow of 900,000 gallons per day has a surplus capacity of 300,000 gallons per day. Sewage receives primary and secondary treatment, consisting of a clarifier, a high-rate filter, a digester, and drying beds. Treated effluent is discharged into the South Fork of the Licking River. Sanitary sewers are 8 to 18 inches in diameter and separate storm sewers are 8 to 24 inches in diameter.

The sewerage rate is 50 percent of the customer's monthly water bill.

AGRICULTURE-NATURAL RESOURCES-CLIMATE

Agriculture

The approximate total land area of Harrison County is 197,120 acres, with 93.6 percent of the area devoted to farm land. In 1964 there were 1,468 farms in the county with an average size of 126 acres.

Farm income in the county is largely from the production of burley tobacco supplemented substantially by cattle, hogs, and dairying. The 1964 value of sales of all farm products totaled \$8,104,974, averaging \$5,521 per farm. Crop sales totaled \$4,816,659; livestock and livestock products totaled \$3,287,535.

In 1966, agricultural production in Harrison County included 9.2 million pounds of burley tobacco, 288,000 bushels of corn, and 15,010 tons of alfalfa hay. Livestock on farms on January 1, 1967, included 33,000 cattle and calves, 11,400 hogs and pigs, and 8,800 sheep and lambs. Milk cows on farms during 1965 averaged 3,300 head, with milk production for the year totaling 17.3 million pounds.

Mineral Resources

Limestone was the only reported mineral being exploited in 1967. It is removed in thin slabs and blocked for use as rock fences, foundations or building siding.

Water Resources

The largest supply of surface water is available from the South Fork Licking and Licking Rivers, although other sources may be obtained by impoundment of small streams.

Available information indicates that most wells in the area of the South Fork Licking and Licking Rivers yield more than 500 gallons per day with the best producing 150 gallons per minute. Along lesser drainage lines most wells produce 100-500 gpd.

Forests

There are 33,400 acres of commercial forest land in Harrison County, covering 16.9 percent of the total land area. The most abundant species are white oaks, red oaks, hickories, ash, hard and soft maples, cedar and black walnut.

In Kentucky within 50 miles from Cynthiana there are 1.2 million acres of commercial forest land. In 1962, 39 million board feet of lumber were harvested from this area.

The Kentucky Department of Natural Resources provides forests of the entire area with organized fire protection.

Climate

Cynthiana has a moderate climate, attractive year-round, with few extremes or severe changes. The normal monthly minimum temperature ranges from 25.7° to 64.4°F, while equivalent maximum temperatures range from 41.6° to 86° F. Over the year, the average temperature ranges from 33.7° to 76.2° F.

Snowfall is usually light but most common from December to February. Precipitation averages 43.12 inches annually, heaviest rainfall occurs in January and July.

In an average year about 161 days are cloudy, 105 are partly cloudy, and 99 days are clear. Eighteen days are foggy. The prevailing wind is from the south.

LOCAL GOVERNMENT

Structure

Cynthiana is a fourth-class city and the county seat of Harrison County. It is governed by a mayor and four commissioners elected for four-year terms.

Harrison County is governed by a fiscal court consisting of a county judge and eight magistrates, all of whom serve four-year terms.

Finance

The City of Cynthiana had a general income of \$219,445 for the year ending June 30, 1968. Expenditures for the same period totaled \$208,620. Bonded indebtedness outstanding of the city was approximately \$1,115,000 in Water Plant and Sewage Disposal Plant revenue bonds and \$3,000,000 in Industrial Building Revenue Bonds, as of June 30, 1968.

Harrison County's 1968-69 budget is \$111,641. The county has no bonded indebtedness.

Taxes

Property taxes are the major source of income for Cynthiana and Harrison County. Property must be assessed at 100 percent of value under provisions of the Kentucky Constitution. Net assessed value of property in these jurisdictions in 1968 was:

<u>Classes of Property</u>	<u>Cynthiana</u>	<u>Harrison County</u>
Real Estate	\$23,625,019	\$70,858,460
Tangibles	4,752,288	9,607,696
Public Service	1,776,544	8,043,680

Property tax rates for Cynthiana and Harrison County are shown on the following page.

TABLE 9

PROPERTY TAX RATES PER \$100 OF ASSESSED VALUE
FOR CYNTHIANA AND HARRISON COUNTY, 1968 ^{14/}

Taxing Unit	Cynthiana	Harrison County
State	\$.015	\$.015
County	.165	.165
School *	.648	.648
City	.300	
Health	.025	.025
Library	.020	.020
Fire		.020
Total	\$ 1.173	\$.893

*General levy - \$.498, special handling - \$.150.

Cynthiana requires a business license for insurance companies with a maximum of \$5 per year and a minimum of \$3 on each \$10,000 written in premiums. No occupational tax is levied.

Cynthiana is empowered by state law to allow new industries a five-year exemption from municipal property taxation.

Planning and Zoning

The Cynthiana Planning and Zoning Commission was established in 1956. The following planning studies have been completed: General Plan, Zoning Plan, and a Codes Enforcement Survey. The Commission is currently updating its General Plan.

Safety

Fire: Cynthiana has a Class-5 American Insurance Association fire rating. The Cynthiana Fire Department is staffed by a chief, assistant chief, seven full-time firemen and twenty-six volunteers. Equipment consists of three fully equipped pumpers: one with a capacity of 1,000 gpm, the other two can pump 750 gpm. Other equipment includes two deluge guns, six self-contained gas masks, one smoke exhaust fan, a mechanical high pressure foam device, 200 fire hydrants, 5,000 feet of 2 1/2-inch hose and a rescue boat. Alarm is by telephone and a centrally located siren.

Police: The Cynthiana Police Department consists of a chief, assistant chief, two sergeants, nine patrolmen, one night radio operator, one part-time patrolman and fifteen special policemen. The department has two radio-equipped cars and a breath analyzer for detecting alcohol. Radio contact is maintained with the Kentucky State Police and other local police departments through the two-way radio network.

The Harrison County Sheriff's Office is located in Cynthiana. It is staffed by a sheriff and two deputies utilizing three radio-equipped cars.

Sanitation

The City of Cynthiana provides garbage collection at a fee of \$1.50 per month in the residential section, \$2.20 per pickup for businesses, and \$6.05 per pickup for industries. Garbage is collected twice weekly in the business district and weekly in the residential area. Disposal is by means of a land fill.

HEALTH

Hospitals

Cynthiana is served by the Harrison County Memorial Hospital which has 59 acute and 34 extended care beds and 12 bassinets. The staff includes 8 physicians, 18 registered nurses, 2 registered lab technicians, 12 licensed practical nurses, 5 graduate licensed practical nurses, 26 nurses aides, a radiologist, a consulting pathologist, an ADA dietician, a physical therapist, and a pharmacist.



HARRISON COUNTY MEMORIAL HOSPITAL

Nursing Homes

There are four nursing or rest homes located in Cynthiana - Edgemont Manor Nursing and Convalescent Home, Peebles Home for the Aged, Shady Lawn Home, and Martins Rest Home.

Public Health

The Harrison County Health Department is located in Cynthiana and is housed in a modern building. The full-time staff includes a registered sanitarian, three registered nurses, one health aide, and two clerks. A health officer, nutritionist, health educator, dentist, and physical therapist provide part-time services.

The health program includes communicable disease control; venereal disease control; tuberculosis control; sanitation service; adult examinations; health education; maternity, infant and preschool health; and vital statistics.

The health department's budget for 1968-69 is \$47,557.

OTHER LOCAL FACILITIES

Housing

There is a limited supply of general rental housing presently available in Cynthiana. One-room efficiencies, unfurnished, rent from \$65 to \$80 per month; one-bedroom kitchen and living room, unfurnished apartments rent from \$75 to \$90 per month; and two-bedroom apartments, unfurnished, rent from \$100 to \$135 per month. Several houses are available for sale. Cost of a three-bedroom stone or brick veneer house with 1 1/2 baths and concrete block basement ranges from \$16,000 to \$26,000; without basement the same house ranges from \$15,000 to \$25,000.

There are three subdivisions in Cynthiana. Prices of lots range from \$2,000 to \$6,000.

Seven real estate offices are located in Cynthiana, using a multiple listing service.

Communication

Telephone: The South Central Bell Telephone Company serves 5,684 customers in the Cynthiana area. County-wide toll free service is offered and direct distance dialing is provided.

Telegraph: The Western Union Telegraph Company serves Harrison County and is available at the Harrison Hotel.

Postal: Cynthiana has a first-class post office. Mail is received and dispatched two times daily. There is one delivery in the business district daily. Six rural routes are served.

Newspapers: Cynthiana is served by the Cynthiana Democrat, a weekly newspaper published on Thursdays. The circulation is 5,300. Newspapers are received daily from Lexington and Louisville, Kentucky, and Cincinnati, Ohio.

Radio: The local radio station, WCYN, operates at 1400 kilocycles. Radio programs are also received clearly from Lexington and Louisville, Kentucky, stations.

Television: Reception is by outside antenna. Stations from Lexington, Kentucky, and Cincinnati, Ohio, are received.

Libraries

The Cynthiana Public Library has 31,512 volumes; many records, films and magazines are also available. The 1968 circulation of the main library was 49,000 volumes. The whole library system, including the two branches and thirteen "stations" located throughout the county, had a circulation of 179,084 in 1968. The library has a story hour, art classes, telephone reference service, paintings on display, and special services to the handicapped. The bookmobile operates four days a week and had a 1968 circulation of 130,076. There is a community room for use by civic and other groups for educational purposes.

Churches

There are nine churches in Cynthiana representing the following denominations: Baptist, Catholic, Christian, Episcopal, Methodist, Nazarene, Presbyterian, Assembly of God, and the Church of God.

Financial Institutions

<u>Bank</u>	<u>Statement as of December 31, 1968</u>	
	<u>Assets</u>	<u>Deposits</u>
The National Bank of Cynthiana	\$12,814,372.39	\$11,730,029.48
Farmers National Bank	10,103,676.49	9,113,865.70
The Harrison Deposit Bank & Trust Co.	5,296,283.11	4,585,123.73
<u>Savings and Loan Associations</u>	<u>Assets</u>	<u>Shared Accounts</u>
First Federal Savings & Loan Association of Cynthiana	\$ 8,088,116.45	\$ 7,650,317.34

Hotels and Motels

Harrison Hotel	50 rooms
Evergreen Motel	27 units

Clubs and Organizations

Business and Civic: Chamber of Commerce, Jaycees, Kiwanis, Lions, Rotary, Ministerial Association, Red Cross, Welcome Wagon

Fraternal: American Legion, Masonic Lodge, VFW, Elks, Odd Fellows, Lions Club

Women's: Woman's Club, B and PW Club, DAR, Eastern Star, Homemakers, Garden Club, Elks Auxiliary, American Legion Auxiliary, VFW Auxiliary, Daughters of the Confederacy, Junior Women's Club, Hospital Auxiliary

Youth: Boy Scouts, Girl Scouts, Cub Scouts, Brownies, FFA, FHA, 4-H, Leo's Club (World's first youth Lions Club)

Recreation

Local: Cynthiana has two city-owned recreation areas. One contains a lighted swimming pool, tennis court, lighted football stadium, two baseball fields (one is lighted), and a playground. The other area has a playground, tennis courts, picnic ovens, and tables. The city schools all have equipped playgrounds.

During the spring, summer, and fall, boating, fishing, and water skiing are enjoyed on the South Fork of the Licking River which flows north through Cynthiana. A boat and ski club is spearheading this type of recreation.

A youth recreational facility known as the Y-Teen Club Center is supervised by a manager who is paid by the Harrison County Recreation Board. The Center offers a jukebox, dancing, and other facilities.

The Harrison 4-H Center is located 2 miles southeast of Cynthiana. It has an exhibit hall, refreshment stand, lighted show ring, and two live-stock barns. It is the home of the Harrison County Fair and the Cynthiana Horse Show.

There is one downtown movie and one drive-in theater.

There are locally sponsored Little League teams.

Cynthiana has a nine-hole golf course, swimming pool, and clubhouse.

Area: Cynthiana is located 32 miles north of Lexington, which is in the heart of the Blue Grass Region and features the finest horse racing in the country. Cincinnati, with its wide variety of recreational activities, is located 60 miles north. Frontier Land, a proposed amusement park, will be located approximately 50 miles north in Northern Kentucky.

Lake Herrington, 52 miles southwest, provides facilities for camping, fishing, boating and swimming. Carter Caves State Park, 81 miles east, is known for its scenic beauty and offers facilities for swimming, fishing, boating, cave tours, picnicking, and horseback riding. A lodge and motel have recently been completed. Blue Licks Battlefield State Park, 11 miles

north, provides facilities for tourism and recreation. A new modern swimming pool has been completed.

Georgetown College, Georgetown, has an intercollegiate basketball team. Transylvania College and the University of Kentucky in Lexington have intercollegiate teams, and the University is a member of the Southeastern Conference in football and basketball.

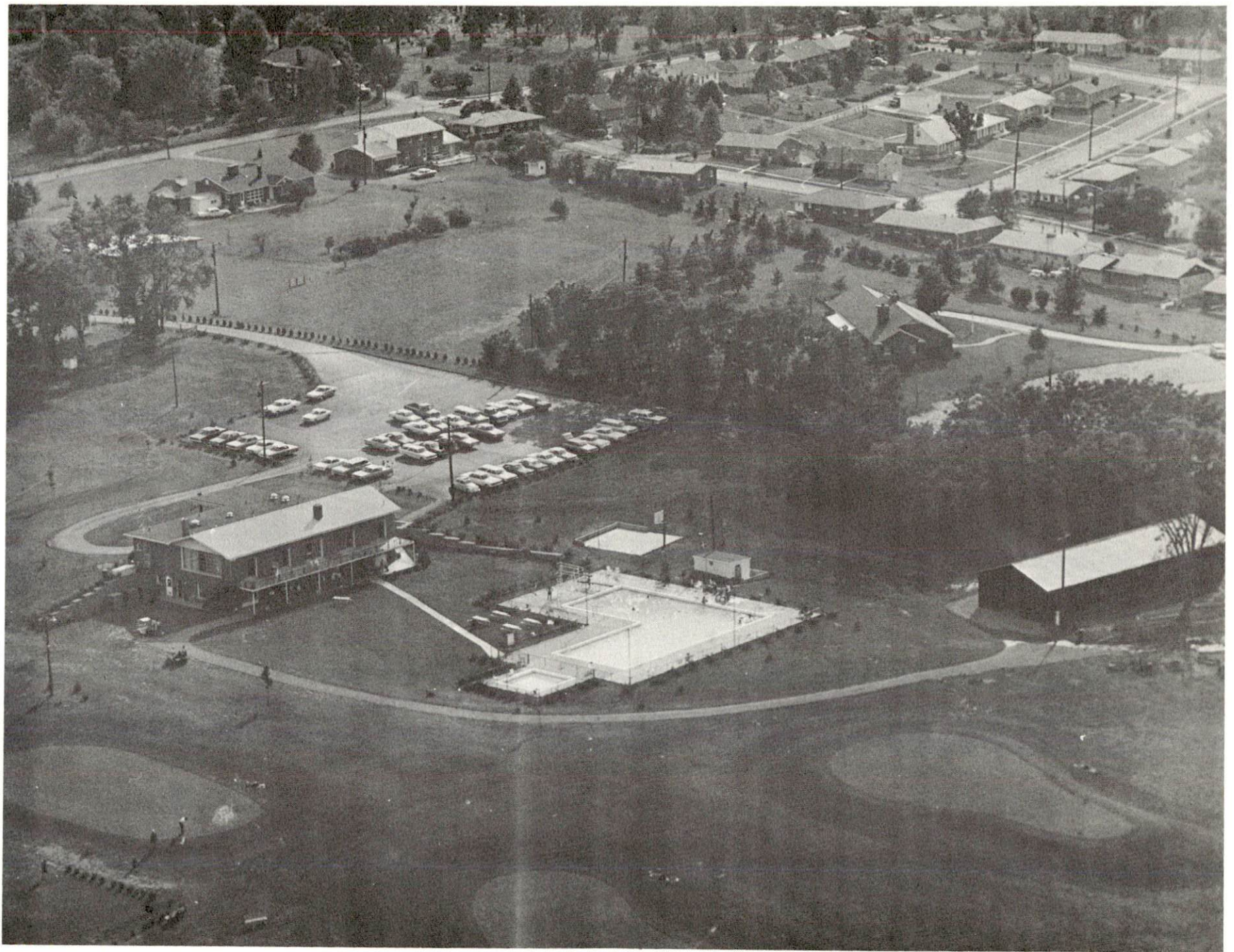
Community Improvements

Public: A new \$700,000 Vocational Extension Center will be in use in September, 1969; construction has started on a new Juvenile Detention Center; the Harrison County School System has completed expansion of recreational and athletic facilities and added ten new air-conditioned, carpeted rooms to the elementary school.

A new 100-unit, low-rent housing project has recently been completed making a total of 200 units in use.

Business and Industrial: The Ladish Company - new building; Bundy Tubing Company - expansion - nearly doubled employment; Wolfson Manufacturing Company - moved to new building and doubled employment; Custom Pallet - new manufacturing firm started operations; Blue Grass Industries - located new plant; several new businesses established retail outlets in Cynthiana and some existing firms remodeled or expanded.

Other: Several churches built new buildings or remodeled recently; the Cynthiana-Harrison County Chamber of Commerce has been reorganized with a full-time staff.



CYNTHIANA COUNTRY CLUB

HISTORY

Harrison County was formed in 1794 from Bourbon and Scott Counties and was itself subdivided to make seven other counties. The South Fork of the Licking River flows north through the county and the soil is red clay with a limestone foundation.

Cynthiana is the county seat and is situated on the South Fork of the Licking River. It was named for two daughters of Robert Harris, Cynthia and Anna. The county was named for Mr. Benjamin Harrison who served in the conventions at Danville which led to the founding of the Commonwealth of Kentucky.

Historical events of note include:

John Hinkson lead an early group of men into the area to settle in 1775.

Richard Henderson and James Harrod sent surveyors into the area around the late 1770's.

The county became a seat of religious worship and by 1861 there were six houses of worship in the settlement.

Names worthy of remembrance include:

John Hinkson - led first settlers in 1775.

Alexander Downing - built first flour mill in 1818.

Samuel Patterson - operated woolen factory in early 1800's.

Major William K. Wall - soldier, lawyer, legislator and Commonwealth's Attorney.

Joe Reister - "reporter deluxe" for Courier Journal.

Cissy Gregg - cooking editor for Courier Journal

Conrad Anderson - fostered the organization of The United Cerebral Palsy of the Bluegrass.

James Wilson - former editor of the Cynthiana Democrat.

Judge Mac Swinford - lawyer, legislator, U. S. District Judge and author.

In Harrison County, agriculture has always been a vital part of the economy. Corn, hay, wheat, tobacco and livestock have been raised for market throughout its history. Distilling of whisky was an early activity of the county. The number of firms distilling whisky reached a peak of 30 in 1874.

Industry has begun to move into the Blue Grass region and Harrison County. The area encourages industrial development which can provide employment for the local citizens and a balance in the economy of the county.

SOURCES OF INFORMATION

- 1/ U. S. Bureau of the Census, U.S. Census of Population, Kentucky.
- 2/ Department of Sociology, University of Kentucky, Kentucky County Provisional Population Estimates, 1968, Lexington, Kentucky
- 3/ Kentucky Department of Commerce, 1969 Kentucky Directory of Manufacturers.
- 4/ Kentucky Department of Economic Security, Division of Research and Statistics.
- 5/ Kentucky Department of Commerce, Kentucky Directory of Job Shops.
- 6/ Kentucky Department of Economic Security, Employment Service Office.
- 7/ Cynthiana-Harrison County Chamber of Commerce, Labor Supply Survey, June 1968.
- 8/ Kentucky Department of Commerce, Kentucky's Labor Supply Estimates, 1968.
- 9/ University of Kentucky, Office of Development and Business Research, 1968.
- 10/ Kentucky Department of Education, Kentucky School Directory, 1968-69.
- 11/ Louisville & Nashville Railroad, Louisville, Kentucky
- 12/ Ecklar-Moore Express, Inc., Lexington, Kentucky, 1968.
- 13/ Louisville & Nashville Railroad, Louisville, Kentucky.
- 14/ Office of City Clerk, Office of County Clerk.