

1973

Industrial Resources: Leslie County - Hyden

Kentucky Library Research Collections
Western Kentucky University, spcol@wku.edu

Follow this and additional works at: https://digitalcommons.wku.edu/leslie_pty



Part of the [Business Administration, Management, and Operations Commons](#), [Growth and Development Commons](#), and the [Infrastructure Commons](#)

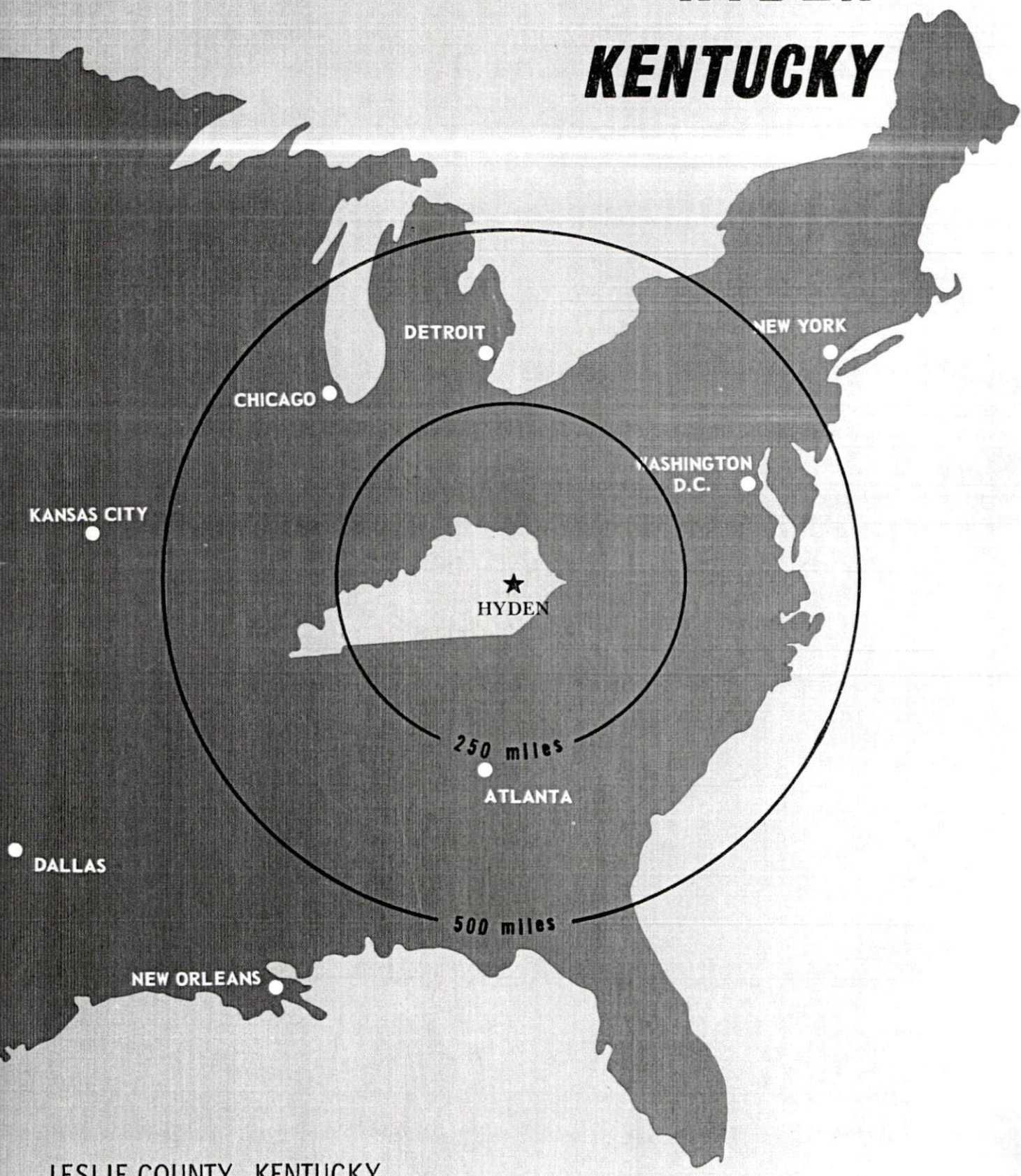
Recommended Citation

Kentucky Library Research Collections, "Industrial Resources: Leslie County - Hyden" (1973). *Leslie County*. Paper 7.
https://digitalcommons.wku.edu/leslie_pty/7

This Report is brought to you for free and open access by TopSCHOLAR®. It has been accepted for inclusion in Leslie County by an authorized administrator of TopSCHOLAR®. For more information, please contact topscholar@wku.edu.

INDUSTRIAL RESOURCES

HYDEN ***KENTUCKY***



LESLIE COUNTY, KENTUCKY

HYDEN INDUSTRIAL SITE

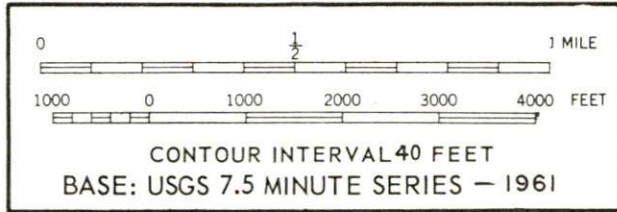
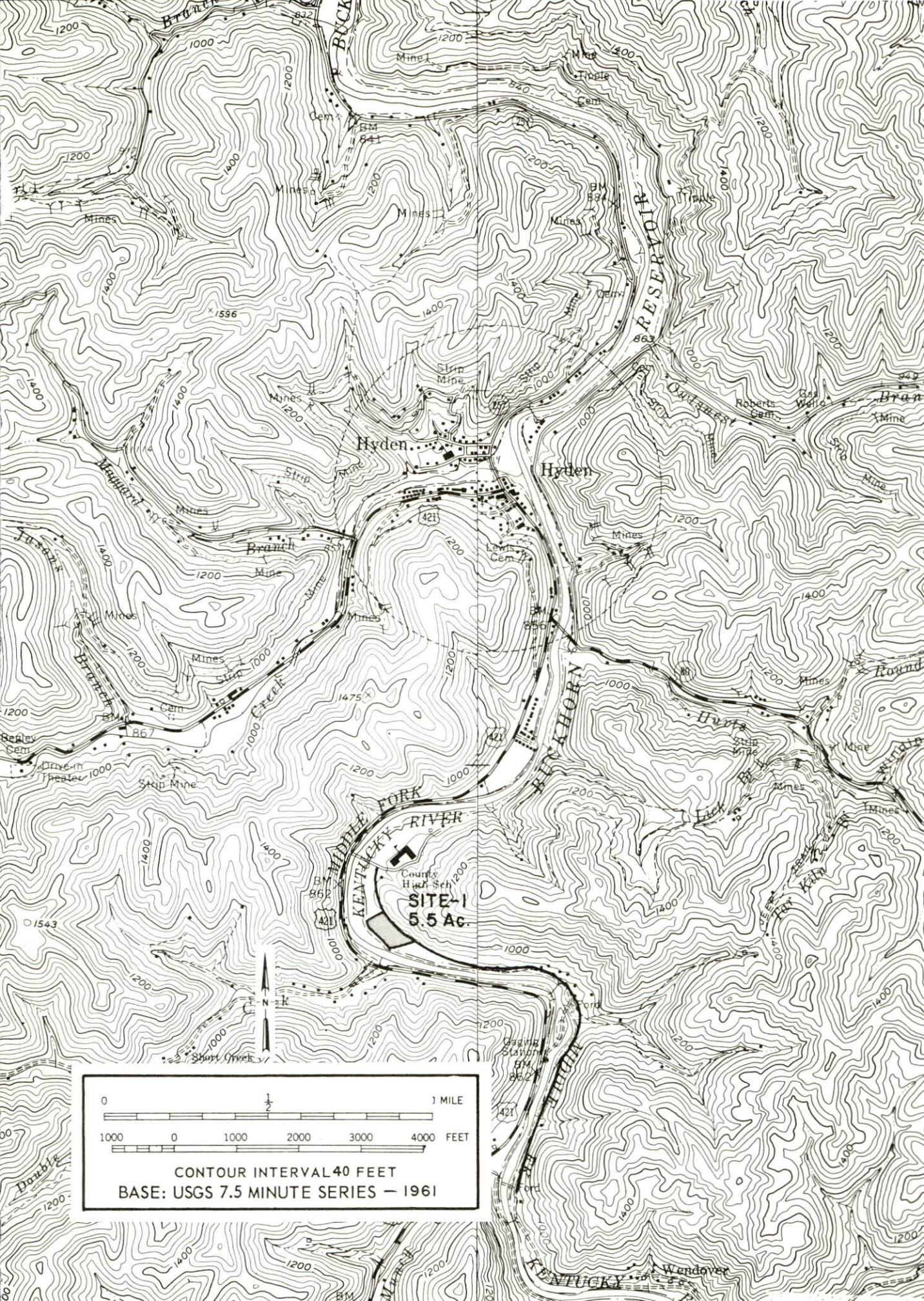
1973

HYDEN INDUSTRIAL SITES

1973

For more information about the following site, contact R. B. Campbell, Hyden, Kentucky; or the Kentucky Department of Commerce, Capital Plaza Office Tower, Frankfort, Kentucky

SITE #1: ACREAGE: 5.5
 LOCATION: One mile south of Hyden on the
 Wendover Road
 ZONING: None
 HIGHWAY ACCESS: Access road to U.S. 421
 RAILROAD: No railroads serve Hyden
 WATER: Hyden-Leslie County Water District
 SIZE LINE: 8-inch line adjacent to site along
 Wendover Road
 GAS: Not available
 ELECTRICITY: Kentucky Power Company
 SEWERAGE: Package plant necessary
 OWNERSHIP: Hyden-Leslie County Water District
 Comments: The site at present is being used for a
 sanitary land fill and is subject to flooding.



INDUSTRIAL RESOURCES

HYDEN, KENTUCKY

Prepared by

The Kentucky Department of Commerce

in cooperation with

The Leslie County Development Association

1973

This copy has been prepared by the Kentucky Department of Commerce,
Division of Research and Planning, and the cost of printing paid from
state funds.

TABLE OF CONTENTS

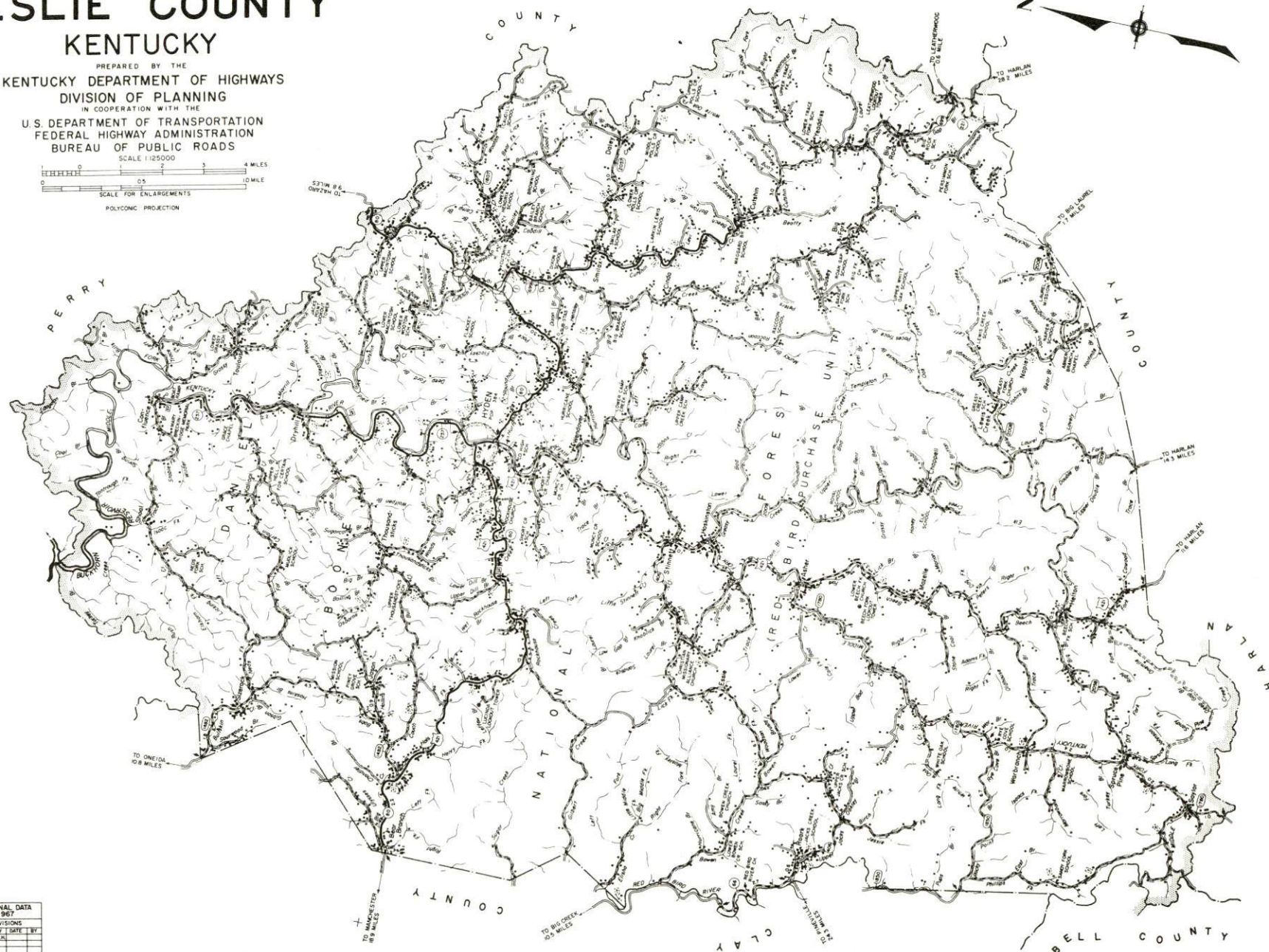
<u>Chapter</u>	<u>Page</u>
INDUSTRIAL SITES	i
HYDEN, KENTUCKY - A RESOURCE PROFILE	1
THE LABOR MARKET.	4
Population Trends	4
General Employment Characteristics 1971	4
Manufacturing Employment Trends by Industry.	4
Hyden Manufacturing Firms, Their Products and Employment	5
Wages.	5
Labor Organizations	5
Current and Future Labor Supply.	5
Total Personal Income	5
Per Capita Personal Income.	5
EDUCATION	6
Public Schools	6
Vocational Schools	6
Colleges and Universities	7
TRANSPORTATION	8
Rail.	8
Truck Service	8
Air	9
Bus	9
Taxi	9
POWER AND FUEL	10
Electricity.	10
Natural Gas	10
Other Fuels	10
WATER AND SEWERAGE	11
Water.	11
Sewerage	11

<u>Chapter</u>	<u>Page</u>
LOCAL GOVERNMENT	12
City	12
County	12
Assessed Value of Property, 1972	12
Local General Property Tax Rates Per \$100 of Assessed Valuation, 1972	12
Planning and Zoning	12
Safety	13
Police.	13
Fire	13
Sanitation.	13
HEALTH	14
Hospitals	14
Public Health	14
OTHER LOCAL FACILITIES.	15
Communications	15
Library Services.	15
Religious Institutions.	15
Financial Institutions.	16
Motels	16
Clubs and Organizations	16
RECREATION	17
Local.	17
Area	17
AGRICULTURE - NATURAL RESOURCES - CLIMATE	18
Agriculture	18
Natural Resources	18
Climate.	18
HISTORY	19

GENERAL HIGHWAY MAP LESLIE COUNTY KENTUCKY

PREPARED BY THE
KENTUCKY DEPARTMENT OF HIGHWAYS
DIVISION OF PLANNING
IN COOPERATION WITH THE
U.S. DEPARTMENT OF TRANSPORTATION
FEDERAL HIGHWAY ADMINISTRATION
BUREAU OF PUBLIC ROADS

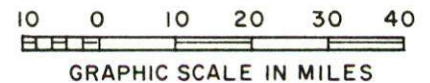
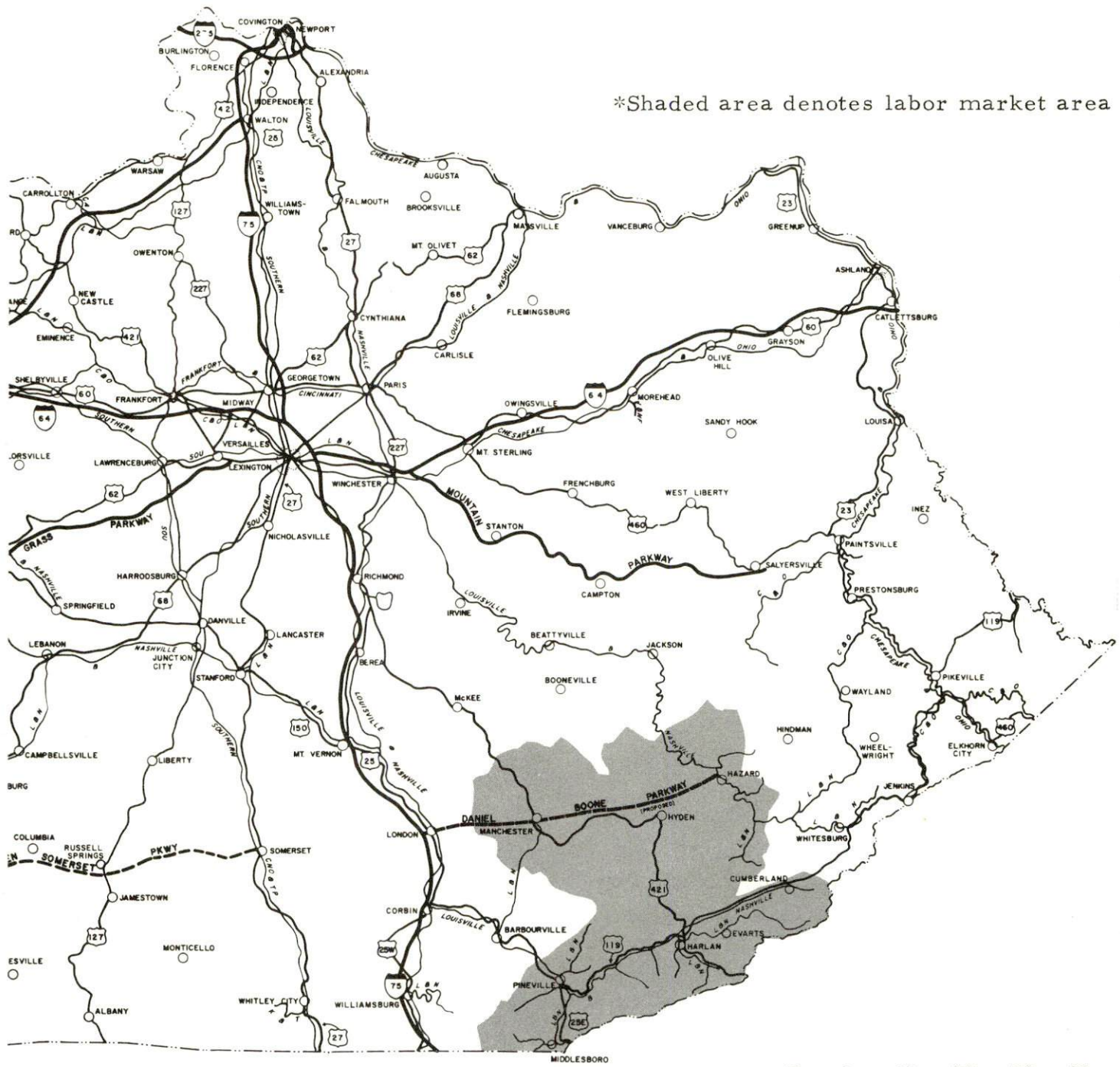
SCALE 1:125,000
0 1 2 3 4 MILES
0 1 2 3 4 MILES
SCALE FOR ENLARGEMENTS
POLYCONIC PROJECTION



ORIGINAL DATA			
1967			
REVISIONS			
DATE	BY	DATE	BY
11-28-67	ALC		

HYDEN LABOR MARKET AREA

*Shaded area denotes labor market area



HYDEN, KENTUCKY - A RESOURCE PROFILE

Hyden, the county seat of Leslie County, is located in the southeastern part of Kentucky. Hyden, situated in the Eastern Coal Fields Region, is 195 miles southeast of Louisville, Kentucky, 118 miles southeast of Lexington, Kentucky, and 167 miles north of Knoxville, Tennessee. The population of Hyden in 1970 was 482.

Leslie County, with a population in 1970 of 11,623, has a land area of 409 square miles. It is surrounded by Bell, Clay, Harlan and Perry Counties.

The Economic Framework

Total employment in Leslie County averaged 1,780 in 1971 with manufacturing providing 79 jobs in September, a 66 percent decrease from September 1961. A slight increase has been noted recently. Government provided an average of 820 jobs in 1971, mining 270 jobs and trade and services 125 jobs. The major industrial product is lumber.

The per capita income of \$890 in 1970 shows a decrease of 19 percent from \$1,101 in 1960, attributable to out migration and a decrease in mining operations.

The Hyden labor market area includes Leslie and the four surrounding counties. Average area employment in 1971 totaled 30,540, including 2,290 in manufacturing, 8,990 in trade and services, 7,020 in government, 6,070 in mining, and 840 in agriculture. Area manufacturing employment has increased 33 percent since 1961 with sharpest gains in the apparel, machinery and transportation equipment industries.

Despite important industrial gains in recent years the area still has a deficit of 9,072 manufacturing jobs when measured against the national industrial employment-population ratio. This indicates an area where the potential for additional manufacturing production is excellent.

Resources for Growth

1. There is a current estimated labor supply of 16,055 men and 13,475 women available for industrial jobs in the labor market area. In addition, 7,655 young men and 7,165 young women will become 18 years of age by 1978 and potentially available for work.

2. Transportation - Rail service is available 24 miles away at Hazard. U. S. 421 and Kentucky Highway 80 serve Hyden. Also, the Daniel Boone Parkway will run approximately 3 miles north of Hyden and connect Hyden with Interstate 75. The London-Corbin War Memorial Airport, 54 miles west of Hyden, is the nearest commercial airport.

3. Electricity is available in large quantity from Kentucky Power Company. The raw water supply from the middle fork of the Kentucky River is more than adequate for continued growth. Low sulphur content coal is available locally along with propane, butane and distillate fuel oil which are available in the immediate vicinity of Hyden.

4. Industrial sites - Hyden has one site available for industrial use.

5. Education - One senior, three junior and two community colleges are located within 55 miles of Hyden. An area vocational educational center is located in Hyden and a state vocational-technical school in Hazard, 24 miles distant. The vocational educational center in Hyden offers classes in six subject areas.

Community Programs for Improvement

Hyden has shown great progress in the last few years. The citizens of Hyden are concerned about their community and enormous obstacles have been overcome primarily out of this concern. For example, a sewerage system now serving 120 houses was completed in 1970 at a cost of \$400,000, a new library was built in 1969, a 24-unit motel and restaurant was completed recently, phase 1 of a new county grade school has been completed and phase 2 at a cost of \$350,000 including new science, reading facilities and a library is scheduled for completion by September 1973. A new \$460,000 vocational school has served Hyden and Leslie County since August of 1971.

Additional community improvements include: a new city parking lot which will alleviate traffic tie-ups in the downtown area, a volunteer fire department and the construction of the first four in a series of sixteen low cost houses. In the last twenty years all of the downtown buildings with the exception of one have been rebuilt or remodeled.

Hyden has an active mental health program including a variety of services ranging from 24-hour emergency medical and mental health service to active drug abuse and alcohol programs, day care facilities for 30 children, marital counseling and the services of a speech therapist, clinical psychologist and psychiatrist who augment the full-time staff of one registered nurse, one family service co-ordinator and one secretary.

There is an active Headstart program in Hyden under the KIPP program. Day care centers with facilities for 80 children are planned for 1973.

A new \$2.5 million hospital is scheduled for completion by August 1973. The staff of the hospital will be enlarged and the number of beds increased to 40. The new hospital will be made readily accessible to the community by the construction of a new bridge. All of the main streets in town will be resurfaced, sidewalks reconstructed and gutters installed. Further improvement includes the renovation of the courthouse.

Recreation, Entertainment and Livability

Hyden is located in the northeastern section of the Redbird Purchase Unit of the Daniel Boone National Forest. Daniel Boone National Forest covers 460,000 acres of timberland in eastern Kentucky. Facilities include scenic hiking trails, rivers and creeks stocked with rainbow trout, special hunting preserves, and many camping and fishing facilities. Greasy Creek which extends for approximately 38 miles has 38 species of fish.

The Mary Breckinridge Festival honoring the founder of the Frontier Nursing Service is held in Hyden the last Saturday in September and features a parade, a Handicraft Fair, a beauty pageant and scholastic and athletic contests.

Buckhorn Lake State Resort Park, approximately 35 miles distant, is a 750-acre resort park with lodge. The facilities include fishing, boating and swimming in the 1,200-acre Buckhorn Lake.

Levi Jackson Wilderness Road State Park, 52 miles distant, is an 815-acre park. The facilities include: riding, hiking, shuffleboard, picnicking, and archery.

Pine Mountain State Resort Park, 50 miles distant, is a 2,500-acre park. Facilities include a 20-room lodge, lodge pool, cottages and camp grounds. Recreational facilities include: swimming, riding, hiking, shuffleboard, and golfing.

Kingdom Come State Park, 30 miles distant, is a 1,000-acre park. Facilities include: camping, hiking and picnicking.

The Poke Sallet Festival, held annually in Harlan, 33 miles away, offers home cooked vittles, a horse show, and an arts and crafts show.

THE LABOR MARKET

POPULATION TRENDS ^{1/}

Area	Population			Percent Change	
	1970	1960	1950	1960-70	1950-60
Hyden	482	348	647	+38.5	-46.2
Labor Market Area	124,854	153,093	204,572	-18.4	-25.2
Leslie County	11,623	10,941	15,537	+ 6.2	-29.6
Bell County	31,121	35,336	47,602	-11.9	-25.8
Clay County	18,481	20,748	23,116	-10.9	-10.2
Harlan County	37,370	51,107	71,751	-26.9	-28.8
Perry County	26,259	34,961	46,566	-24.9	-24.9

GENERAL EMPLOYMENT CHARACTERISTICS, 1971 ^{2/}

Major Employment Group	Employment	
	Leslie County	Labor Market Area
TOTAL	1,780	30,540
Agricultural	0	840
Nonagricultural	1,780	29,700
Manufacturing	60	2,290
Government	820	7,020
Trade and Services	124	8,990
Mining	268	6,070
Other	508	5,330

MANUFACTURING EMPLOYMENT TRENDS BY INDUSTRY SEPTEMBER 1971 AND 1961 ^{3/}

Industry	Leslie County			Labor Market Area		
	1971	1961	% Change	1971	1961	% Change
TOTAL	79	233	-66.1	2,394	1,794	+ 33.4
Food & Kindred Products	0	0	--	428	532	- 19.5
Apparel, Textiles, Leather	0	0	--	575	138	+316.7
Lumber, Furniture	79	233	-66.1	773	930	- 16.9
Printing & Publishing,						
Paper	0	0	--	88	61	+ 44.3
Chemicals, Petroleum &						
Coal, Rubber	0	0	--	96	50	+ 92.0
Machinery, Metal Products,						
Equipment	0	0	--	396	68	+482.4
Other	0	0	--	38	13	+192.3

HYDEN MANUFACTURING FIRMS,
THEIR PRODUCTS AND EMPLOYMENT ^{4/}

<u>Firm</u>	<u>Product</u>	<u>Employment</u>		
		<u>Total</u>	<u>Male</u>	<u>Female</u>
Asher Coal & Lumber Co., Inc.	Lumber	22	22	0
Moore Lumber Co.	Lumber, dimensional material	10	9	1

WAGES

Wage information will be provided upon request by the Kentucky Department of Commerce, Division of Research and Planning.

LABOR ORGANIZATIONS

There are no labor unions currently representing manufacturing workers in Hyden.

CURRENT AND FUTURE LABOR SUPPLY -
HYDEN LABOR MARKET AREA

<u>Area</u>	<u>Current Labor Supply, 1972 ^{5/}</u>			<u>Future Labor Supply by 1978 ^{6/}</u> <u>(Becoming 18 Years of Age)</u>		
	<u>Total</u>	<u>Male</u>	<u>Female</u>	<u>Total</u>	<u>Male</u>	<u>Female</u>
Labor Market Area	29,528	16,054	13,474	14,822	7,656	7,166
Leslie County	2,754	1,549	1,205	1,632	833	799
Bell County	7,154	3,786	3,368	3,476	1,810	1,666
Clay County	4,869	2,815	2,054	2,311	1,184	1,127
Harlan County	9,109	4,803	4,306	4,334	2,230	2,104
Perry County	5,642	3,101	2,541	3,069	1,599	1,470

TOTAL PERSONAL INCOME ^{7/}

<u>Area</u>	<u>1970</u>	<u>1960</u>	<u>% Change</u>
Leslie County	\$ 10,918,000	\$ 12,047,000	- 9.4
Labor Market Area	244,282,000	174,059,000	+ 40.3
Kentucky	9,719,647,000	4,779,695,000	+103.4

PER CAPITA PERSONAL INCOME ^{8/}

<u>Area</u>	<u>1970</u>	<u>1960</u>	<u>% Change</u>
Leslie County	\$890	\$1,101	- 19.2
Labor Market Area	\$890 - \$2,269	\$627 - \$1,427	N.A.
Kentucky	\$3,019	\$1,573	+ 91.9

EDUCATION

Public Schools

	<u>Leslie County</u>
Total Enrollment	3,634
Grades 1-8	2,739
High School	895
Student-Teacher Ratio	21-1
Elementary	21-1
High School	24-1
State Rating of High School	Standard
Percent High School Graduates to College	39.7
Current Expenditures Per Pupil	\$390.60
Bonded Indebtedness, June 30, 1972	\$1,542,000

Vocational Schools

	<u>Nearest State School</u>	<u>Nearest Area Education Center</u>
Location	Hazard State Vocational- Technical School	Leslie County Area Voca- tional Education Center
Miles Distant	Hazard, Kentucky	Hyden, Kentucky
Curriculum	24 miles	
	Secretarial	Secretarial
	Clerical	Clerical
	Practical Nursing	Auto Mechanics
	Learning Lab	Carpentry
	Electronics (Industrial)	Electricity
	Highway Technology	Welding
	Auto Body Repair	
	Auto Mechanics	
	Carpentry	
	Commercial Foods	
	Cosmetology	
	Diesel Mechanics	
	Drafting	
	Electricity	
	Heavy Equipment	
	Machine Shop	
	Mine Maintenance	
	Welding	

Colleges and Universities

<u>Name</u>	<u>Area - Within 55 Miles</u>		<u>Highest Degree Conferred</u>
	<u>Location</u>	<u>Enrollment</u>	
Alice Lloyd Junior College	Pippa Passes	268	Associate
Hazard Community College	Hazard	217	Associate
Lees Junior College	Jackson	423	Associate
Southeast Community College	Cumberland	340	Associate
Sue Bennett College	London	181	Associate
Union College	Barbourville	902	Masters

TRANSPORTATION

Rail

Nearest line serving Hyden - Louisville & Nashville Railroad in
Hazard, 24 miles distant

Services - Freight, siding, switching, REA Express pickup and
delivery

RAILWAY TRANSIT TIME FROM HAZARD, KENTUCKY, TO: 9/

City	No of Days		City	No. of Days	
	CL			CL	
Atlanta, Ga.	4		Los Angeles, Calif.	6	
Birmingham, Ala.	4		Louisville, Ky.	2	
Chicago, Ill.	4		Nashville, Tenn.	3	
Cincinnati, Ohio	2		New Orleans, La.	3	
Cleveland, Ohio	4		New York, N. Y.	5	
Detroit, Mich.	5		Pittsburgh, Pa.	4	
Knoxville, Tenn.	3		St. Louis, Mo.	3	

Truck Service

Company

Home Office

Conken Freight Lines, Inc.
Hazard Express
Hogan Storage and Transfer
Company
Overnite Transportation
Company

Knoxville, Tennessee
Lexington, Kentucky
Williamson, West Virginia
Richmond, Virginia

HIGHWAY MILES AND TRUCK TRANSIT TIME IN DAYS FROM HYDEN, KENTUCKY, TO SELECTED MARKET CENTERS

City	Highway Miles	Delivery Time 10/		City	Highway Miles	Delivery Time	
		LTL	TL			LTL	TL
Atlanta, Ga.	361	3	2	Los Angeles, Calif.	2,384	7	5
Birmingham, Ala.	421	3	2	Louisville, Ky.	195	1	1
Chicago, Ill.	494	3	2	Nashville, Tenn.	352	3	2
Cincinnati, Ohio	221	3	2	New Orleans, La.	682	4	3
Cleveland, Ohio	405	3	2	New York, N. Y.	780	4	3
Detroit, Mich.	487	3	2	Pittsburgh, Pa.	560	4	3
Knoxville, Tenn.	167	3	1	St. Louis, Mo.	459	3	3

Air

Nearest Commercial

Location:	London-Corbin War Memorial Airport 3 miles southeast of London, 54 miles west of Hyden
Runways:	1 paved
Length:	6,000 feet
Traffic	
Control:	Wind sock
Lighting:	Beacon, runway and obstruction lights
Services:	80 and 100 octane, JP-A-50, Piedmont Airlines, taxi, U-Drive-It, weather, flight training, charter and ambulance service, vending machines

Bus

Buckhorn-Hazard-Hyden Bus Line - twice daily

Taxi

8 taxis, 6 a.m. to 6 p.m.

POWER AND FUEL

Electricity

Company serving Hyden - Kentucky Power Company

Source of power - Kentucky Power Company

Total generating capacity - 1,080,000 KW

Industrial rates furnished by - Kentucky Power Company, High Street,
Hazard, Kentucky

Company serving Leslie County - Cumberland Valley RECC

Source of power - East Kentucky Power Cooperative

Total generating capacity - 548,000 KW

Industrial rates furnished by - Cumberland Valley RECC, Gray, Kentucky

Company serving Leslie County - Jackson County RECC

Source of power - East Kentucky Power Cooperative

Total generating capacity - 548,000 KW

Industrial rates furnished by - Jackson County RECC, McKee, Kentucky

Natural Gas

There is no natural gas service in Hyden.

Other Fuels

Propane and butane - Rolane Gas, Hazard, Kentucky, 24 miles away;
Manchester Sales and Service, Manchester, Kentucky, 31 miles away;
Blue Flame Gas Company, Avawam, Kentucky, 11 miles away (all
with bulk stations)

Fuel Oils -

Distillate fuel oil distributors - Perry Oil Company, Lothair,
Kentucky, 26 miles away (bulk station)

Residual fuel oil - arrangements must be made with the refinery

Low sulphur content coal - available locally

WATER AND SEWERAGE

Water

Name of water district - Hyden-Leslie County Water District

Area served - Hyden and surrounding areas - Wooton, Stinnett,
Rockhouse and Hoskinston

Date when water district began operating - June 1, 1969

Source of raw water - Middle Fork of the Kentucky River

Capacity of treatment plant - 432,000 gpd

Type of treatment - Chlorine, fluoride, filtration

Average amount of water used in a 24-hour period - 150,000 gallons

Peak amount of water used in a 24-hour period - 150,000 gallons

Storage capacity - 592,000 gallons

Average pressure - 100 psi

Average temperature - 58 degrees F.

Size lines - 2, 3, 4, 6, and 8 inches

MONTHLY WATER RATES FOR WHOLESALE AND INDUSTRIAL CONSUMERS

First	2,000 gallons	\$3.00 (Minimum)
Next	3,000 gallons	1.25 per 1,000 gallons
Next	5,000 gallons	1.00 per 1,000 gallons
Next	15,000 gallons	.90 per 1,000 gallons
Next	25,000 gallons	.80 per 1,000 gallons
Next	50,000 gallons	.70 per 1,000 gallons
Next	100,000 gallons	.50 per 1,000 gallons
Over	200,000 gallons	.40 per 1,000 gallons

Surface water sources - Middle Fork of Kentucky River

Average discharge - Middle Fork, Kentucky River near Hyden - 272 cfs
(13 years, USGS)

Expected ground water yield - 50 to 200 gpm over entire county except
for northwestern corner which is 5 to 50 gpm

Sewerage

Company serving - Hyden City Sewerage

Design capacity - 244,800 gpd

Average daily flow - 43,000 gallons; Treatment - primary and secondary

Type treatment - Aeration, chlorination

Treated effluent discharged into - Middle Fork of Kentucky River

Size of sanitary mains - 8-inch

Rates - 100 percent of monthly water bill

LOCAL GOVERNMENT

City

Structure - Board of Trustees - Chairman - 2-year term; 4 board members - 2-year terms
Budget 1971-72 - General Fund \$16,762.97
Fees and licenses - Privilege tax and unloading tax - \$5 to \$75 annually; car stickers - \$5 annually

County

Structure - County Judge - 4-year term; 4 magistrates - 4-year terms
Budget 1972-73 - Estimated General Fund \$105,102; Road Fund \$45,829

Assessed Value of Property, 1972

<u>Classes of Property*</u>	<u>Leslie County</u>
Real Estate	\$20,827,314
Tangibles	7,771,506
Public Service	3,405,544 (1971)

Local General Property Tax Rates Per \$100 of Assessed Valuation, 1972 ^{11/}

<u>Taxing Unit **</u>	<u>Hyden</u>	<u>Leslie County</u>
State	\$.015	\$.015
County	.405	.405
School	.450	.450
City	.200	
Total	\$1.070	\$.870

Planning and Zoning

Agency - Hyden - Leslie County Planning Commission
Plans completed - Base Map, Existing Land Use Map, Existing Land Use Analysis, Transportation Plan, Parking Study
Codes adopted - Plumbing code, Electric code

*Property assessed at 100 percent of fair value.

**Manufacturing machinery, raw materials inventories and goods in process inventories are not subject to local tax. State rate is only \$.15 per \$100.

SafetyPoliceHydenLeslie County

Total staff
Patrol cars

2
1

7 part-time
3 radio equipped

FireHyden

Staff:

Volunteer

Equipment:

1,500 gpm pumper
750 gpm pumper
Other

1
1
1 jeep

SanitationHyden and Leslie County

Type service

Private

Fee charged:

residential
business

\$3.00 per month
\$10 - \$15 per month

Collection frequency:

residential
business

Twice weekly
Twice weekly

Trash pickup

Twice weekly

Disposal method

Sanitary landfill

HEALTH

Hospitals

<u>General Hospital</u>	<u>Location</u>	<u>Beds</u>
Hyden Hospital and Health Center	Hyden	16
General hospital facilities - Emergency room, operating room, X-ray laboratory, midwife school, pharmacy, family nurse practitioner program		
Medical staff - 4 doctors, 40 registered nurses, 1 graduate licensed practical nurse		

Public Health

Facility - Leslie County Health Department

Staff - 2 registered nurses, 1 auxiliary worker, 1 home health aide, 1 sanitarian, 2 clerk typists

Budget 1971-72 - \$52,786.79

OTHER LOCAL FACILITIES

Communications

Telephone - Leslie County Telephone Company
Services - standard

Postal - U. S. Post Office
Class - second
Mail received - once daily
Mail dispatched - once daily

Newspaper - Leslie County News
Weekly and circulation - 3,840
Other papers received from - Louisville and Lexington, Kentucky;
Knoxville, Tennessee

Radio -
Stations received from - Hazard, Harlan and Manchester, Kentucky

Television -
Reception from - Hazard and Lexington, Kentucky; Knoxville, Bristol
and Johnson City, Tennessee; Huntington, West Virginia

Library Services

Public library - Leslie County Public Library
Size collection - 15,290 volumes
Circulation 1971-72 - 17,980 (Bookmobile - 20,148)
Services - Records, traveling "spinner of yarns," programs for the
blind and senior citizens

Religious Institutions

Number of churches - 2 in Hyden, 6 more in vicinity
Denominations - Baptist and Presbyterian in Hyden; Catholic, Christian,
Church of Christ, Church of God, United Brethren and United Methodist
in vicinity
Nearest Synagogues - Lexington, Kentucky, 118 miles northwest of Hyden
Congregations - Adath Israel (reform), Ohavey Zion (traditional)

Financial Institutions

<u>Bank</u>	<u>Statement as of June 30, 1972</u>	
	<u>Assets</u>	<u>Deposits</u>
Hyden Citizens Bank	\$5,597,444.59	\$5,160,298.71

Motels

Total number - 1
Units - 24

Clubs and Organizations

Business and Civic - Lions, Jaycees, Leslie County Development Association

Fraternal - Masonic Lodge, VFW

Women's - Hyden-Hylanders Homemakers Club, Eastern Star

Youth - Leslie County Youth Council, Boy Scouts, Community Action Council, Little League baseball, softball league, 4-H, FHA, Hi Y Club, Beta Club, Junior Conservation, Cub Scouts

Other - Fish and Game Club, Senior Citizens Group

RECREATION

Local

Public Recreation Facilities

Parks - 4
Tennis court - 1
Baseball diamond - 1
Football fields - 1
Other - boat dock near Hyden

Private Recreation Facilities

Youth Center - 1
Movie theaters - 1 drive-in

Tourist Attractions

St. Christopher's Chapel with 15th century stained glass window
Mary Breckinridge Festival

Area (Within 75 miles)

Buckhorn Lake State Resort Park
Levi Jackson Wilderness Road State Park
Pine Mountain State Resort Park, Book of Job, Kentucky Mountain
Laurel Festival
Kingdom Come State Park
Daniel Boone National Forest
Poke Sallet Festival, Harlan
Greasy Creek

AGRICULTURE - NATURAL RESOURCES - CLIMATE

Agriculture 12/

	<u>Leslie County</u>	<u>Labor Market Area</u>
Total land area (acres)	261,760	1,320,128
Percent of area in farm land	9.76	11.35
Number of farms	155	1,237
Average size of farms (acres)	164.7	121.1
1969 value of all farm products	\$ 75,116	\$2,207,977
Value per farm	484	1,784
Total crop sales	50,601	1,484,303
Total livestock & livestock products	23,805	701,017
1970 agricultural production included:		
Burley tobacco (lbs.)	109,000	2,581,000
Corn (bu.)	11,000	136,000
Cattle and calves (number)	600	10,600
Hogs and pigs (number)	500	6,200
Milk production, 1969 (lbs.)		6,240,000

Natural Resources

Principal mineral resources	coal and petroleum
Other mineral resources	natural gas
Acres of commercial forest land	227,500
Most abundant tree species	red oak, white oak, yellow poplar, hickory, beech, soft maple, hard maple

Climate 13/

	<u>Leslie County</u>
Temperature	
Annual mean (30-year record)	56.8 degrees
Average annual 1971	57.0 degrees
Record highest, July, 1970 (10-year record)	95.0 degrees
Record lowest, January, 1966 (10-year record)	-15.0 degrees
Seasonal heating degree days (30-year record)	4,143
Precipitation	
Mean annual total (30-year record)	41.06 inches
Mean annual snow and sleet (34-year record)	16.70 inches
Total precipitation 1971	43.24 inches
Mean number days precipitation, (.01 inch or more) (26-year record)	133
Average number days thunderstorms (28-year record)	46
Prevailing winds (9-year record)	West-southwest

HISTORY

Leslie County, the one hundred seventeenth county formed in the state, dates from 1878. It was taken from Clay, Harlan and Ferry Counties and lies in the largest coal producing area in the state. Its land surface is rugged and has an area of 409 square miles. Ninety-two percent of the total acreage of the county is classified as forested land, thus it is unsuitable for agricultural production.

The first settlers in Leslie County were John Sizemore and his family who came from North Carolina in 1817 and settled at the present site of Hyden. No wagon road connected this settlement with the outside world until the 1880's. Before that time goods were brought by canoe up the Middle Fork of the Kentucky River.

The county was named for Preston Hopkins Leslie, who was Governor of Kentucky from 1871 to 1875.

Hyden, the county seat, is situated on the Middle Fork of the Kentucky River and is 870 feet above sea level. It was named for Judge Hyden who was the first county judge. It was incorporated in 1947.

Hyden is famous as the directing center for the Frontier Nursing Service and residence of its director and founder Mary Breckinridge. Today a more modern hospital is being built to be dedicated in her honor and it is possible to see one more token of the high esteem in which Mary Breckinridge was held. This is a fifteenth century stained glass window given to Mary Breckinridge and situated in the small St. Christopher Chapel near the old hospital.

Mining and quarrying are the principle industries in Leslie County providing an average employment of 268 or 15 percent of total jobs. Government employment provides approximately 50 percent of the jobs. In 1970 Leslie County mined 2,323,000 tons of bituminous coal.

Although Leslie County showed a substantial increase in population during every decade in the twentieth century except the 1950's, the population of the county in 1970 was 11,623 or a 6.2 percent increase from 1960. Hyden also showed a decrease in population of 46 percent from 1950 to 1960 but has grown 38.5 percent since 1960 to a 1970 population of 482.

SOURCES OF INFORMATION

- 1/ U. S. Department of Commerce, Bureau of the Census, Census of Population, 1950, 1960, 1970.
- 2/ Kentucky Department of Economic Security, Division of Research and Statistics.
- 3/ Kentucky Department of Economic Security, Number of Workers in Manufacturing Industries Covered by Kentucky Unemployment Insurance Law Classified by Industry and County, September 1961 and 1971.
- 4/ Kentucky Department of Commerce, Division of Research and Planning.
- 5/ Kentucky Department of Economic Security, Kentucky Labor Supply Estimates by County, January 1972.
- 6/ Kentucky Department of Commerce, Future Labor Supply by 1978.
- 7/ University of Kentucky, Office of Development Services and Business Research, Total Personal Income for Kentucky.
- 8/ University of Kentucky, Office of Development Services and Business Research, Per Capita Income in Kentucky.
- 9/ Louisville and Nashville Railroad, Louisville, Kentucky.
- 10/ Overnite Transportation Company, Richmond, Virginia.
- 11/ Kentucky Department of Revenue, Program and Research staff.
- 12/ U. S. Department of Commerce, Bureau of the Census, Census of Agriculture, 1969. U. S. Department of Agriculture and Kentucky Department of Agriculture, Kentucky Agricultural Statistics, 1971.
- 13/ U. S. Department of Commerce, Environmental Science Services Administration, Climatological Data, 1971.

All other information was obtained from governmental offices, local businesses and organizations.