

1969

## Industrial Resources: Letcher County - Whitesburg

Kentucky Library Research Collections  
Western Kentucky University, [spcol@wku.edu](mailto:spcol@wku.edu)

Follow this and additional works at: [https://digitalcommons.wku.edu/letcher\\_cty](https://digitalcommons.wku.edu/letcher_cty)



Part of the [Business Administration, Management, and Operations Commons](#), [Growth and Development Commons](#), and the [Infrastructure Commons](#)

---

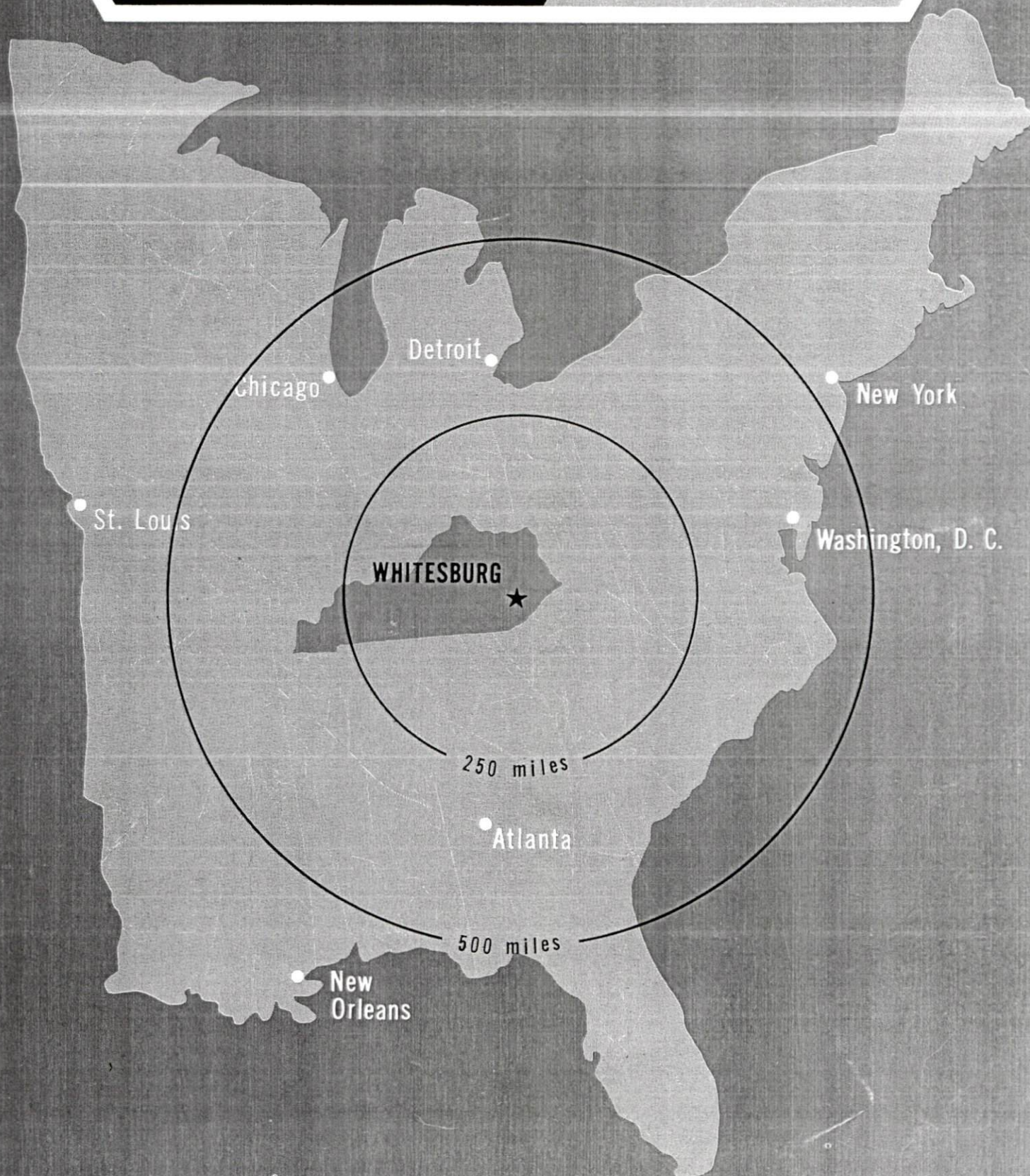
### Recommended Citation

Kentucky Library Research Collections, "Industrial Resources: Letcher County - Whitesburg" (1969). *Letcher County*. Paper 13.  
[https://digitalcommons.wku.edu/letcher\\_cty/13](https://digitalcommons.wku.edu/letcher_cty/13)

This Report is brought to you for free and open access by TopSCHOLAR®. It has been accepted for inclusion in Letcher County by an authorized administrator of TopSCHOLAR®. For more information, please contact [topscholar@wku.edu](mailto:topscholar@wku.edu).

# **INDUSTRIAL RESOURCES**

**WHITESBURG  
KENTUCKY**



WHITESBURG INDUSTRIAL SITE

1969



## WHITESBURG INDUSTRIAL SITE

For more detailed information concerning the industrial site, contact Paul J. Vermillion, Bank of Whitesburg, Whitesburg, Kentucky, or the Kentucky Department of Commerce, Frankfort, Kentucky.

SITE #1: ACREAGE AND TOPOGRAPHY: 18 acres (9.46 acres developed);  
level  
LOCATION: West Whitesburg  
ZONING: Industrial  
HIGHWAY ACCESS: Kentucky 15  
RAILROAD: Louisville & Nashville Railroad borders site.  
WATER: Now within 300 yards - will be completed to  
site soon SIZE LINE: 8-inch  
GAS: None  
ELECTRICITY: Available  
SEWERAGE: Now within 300 yards - will be completed to  
site in near future  
OPTIONED BY: Whitesburg-Letcher County Industrial  
Foundation



LEGEND:

UTILITIES AVAILABLE

W - WATER

E - ELECTRICITY

S - SEWERAGE

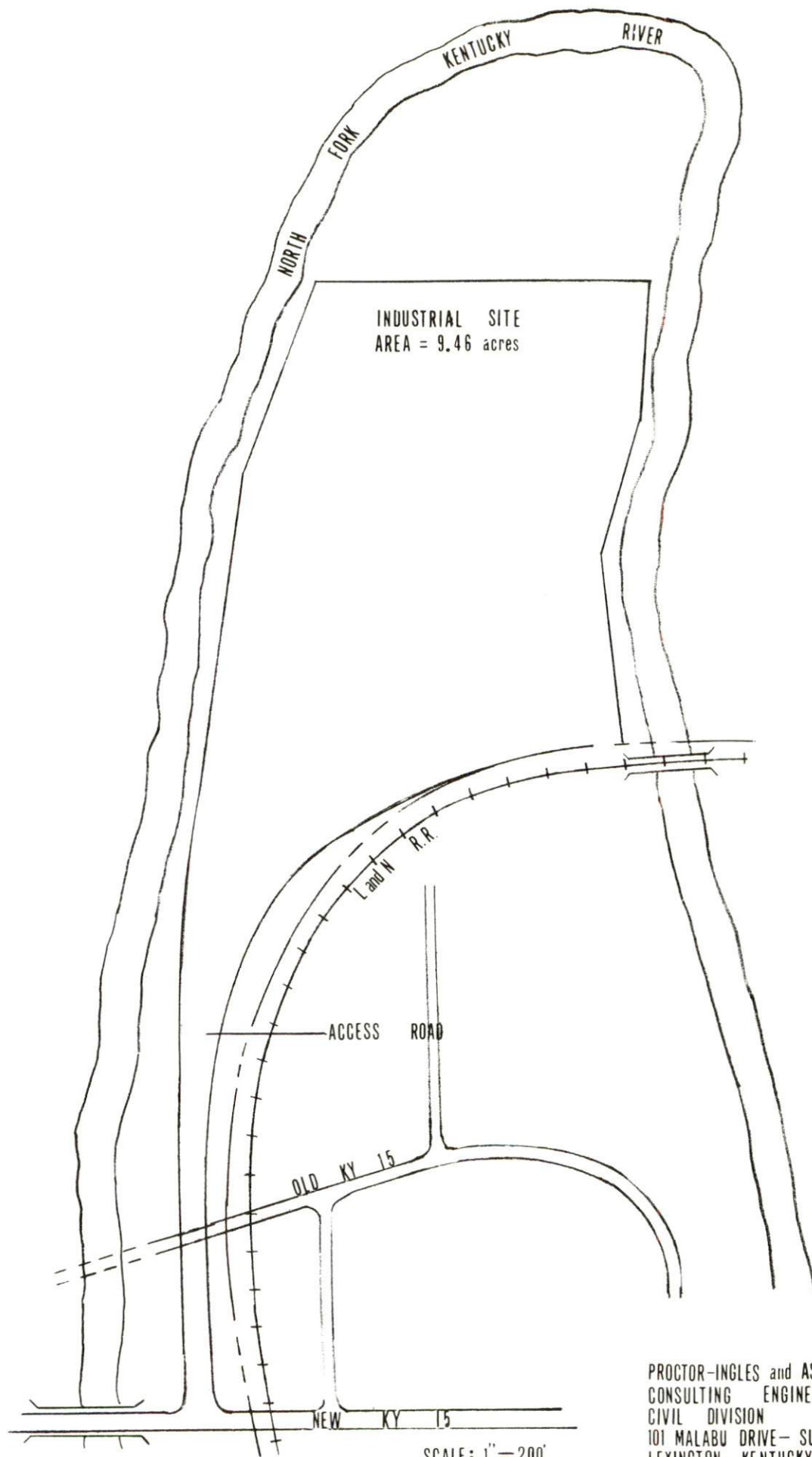
0 1/2 1 MILE

1000 0 1000 2000 3000 4000 FEET

CONTOUR INTERVAL 40 FEET

BASE: USGS 7.5 MINUTE SERIES - 1954





SCALE: 1" = 200'

PROCTOR-INGLES and ASSOCIATES  
CONSULTING ENGINEERS  
CIVIL DIVISION  
101 MALABU DRIVE - SUITE 5  
LEXINGTON, KENTUCKY

INDUSTRIAL RESOURCES

WHITESBURG, KENTUCKY

Prepared by

The Kentucky Department of Commerce

in cooperation with

The Whitesburg-Letcher County Development Foundation

1969



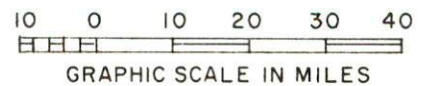
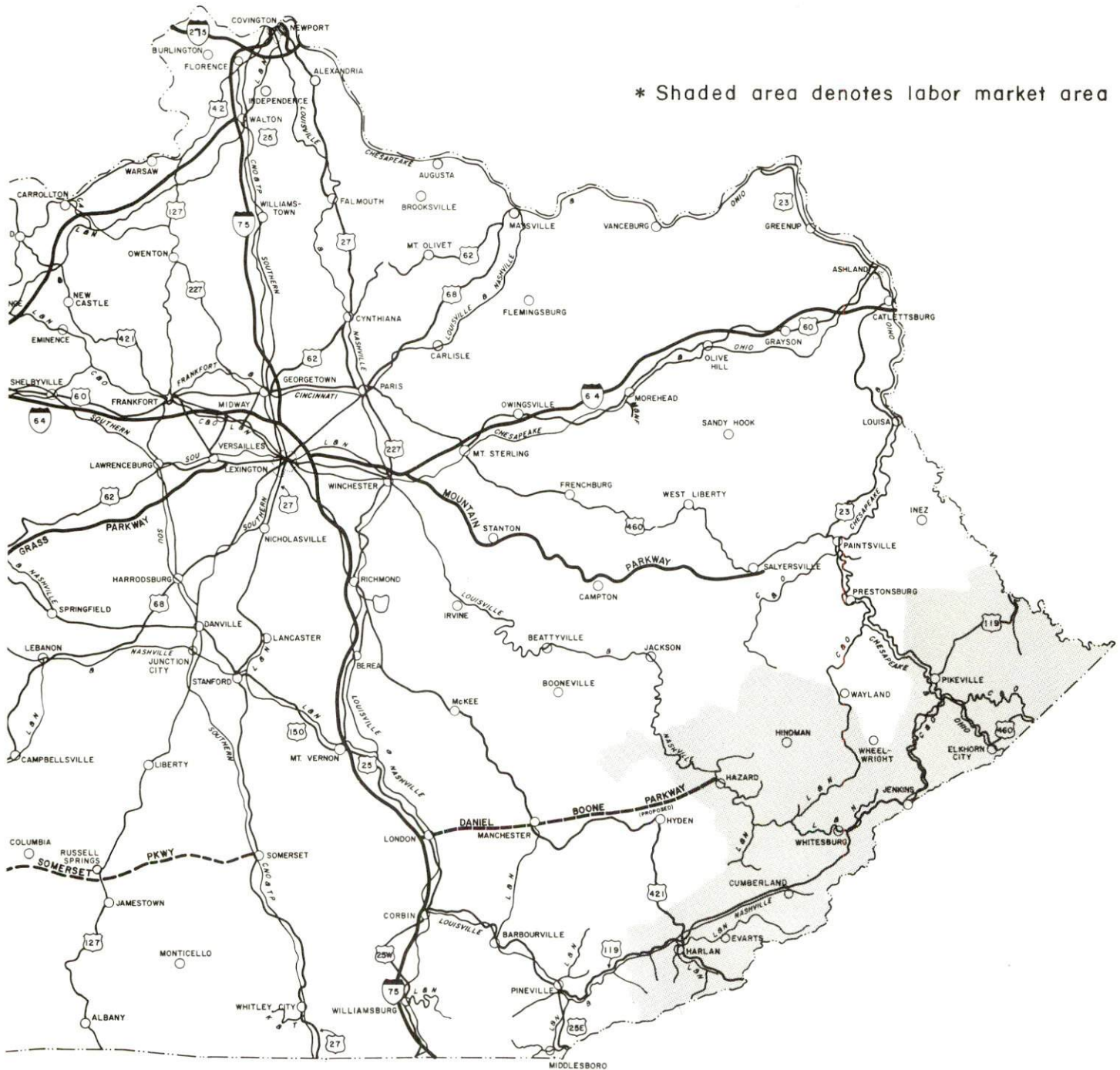
# TABLE OF CONTENTS

<u>Chapter</u>	<u>Page</u>
INDUSTRIAL SITES. . . . .	i
WHITESBURG, KENTUCKY - A RESOURCE PROFILE . . . . .	1
THE LABOR MARKET . . . . .	3
Population Trends . . . . .	3
General Employment Characteristics . . . . .	3
Manufacturing Employment Trends by Industry . . . . .	3
Letcher County Manufacturing Firms, Their Products, and Employment . . . . .	4
Wage Rates for Selected Occupations. . . . .	4
Labor Organizations . . . . .	5
Current and Future Labor Supply . . . . .	5
Total Personal Income . . . . .	5
Per Capita Personal Income . . . . .	5
EDUCATION. . . . .	6
Public Schools. . . . .	6
Parochial Schools . . . . .	6
Vocational Schools . . . . .	9
Colleges and Universities. . . . .	9
TRANSPORTATION . . . . .	10
Rail . . . . .	10
Truck Service. . . . .	10
Air. . . . .	11
Bus . . . . .	11
Taxi . . . . .	11
POWER AND FUEL . . . . .	12
Electricity . . . . .	12
Natural Gas . . . . .	12
WATER AND SEWERAGE . . . . .	13
Water . . . . .	13
Sewerage . . . . .	13

<u>Chapter</u>	<u>Page</u>
LOCAL GOVERNMENT. . . . .	14
City . . . . .	14
County . . . . .	14
Assessed Value of Property - 1969 . . . . .	14
Local General Property Tax Rates Per \$100 of Assessed Valuation - 1968 . . . . .	14
Planning and Zoning . . . . .	15
Safety . . . . .	15
Police . . . . .	15
Fire . . . . .	15
Sanitation . . . . .	15
HEALTH . . . . .	17
Hospitals . . . . .	17
Public Health . . . . .	17
OTHER LOCAL FACILITIES . . . . .	19
Communications . . . . .	19
Library Services . . . . .	19
Religious Institutions . . . . .	19
Financial Institutions . . . . .	20
Hotels and Motels . . . . .	20
Clubs and Organizations . . . . .	20
RECREATION . . . . .	23
Local . . . . .	23
Area . . . . .	23
AGRICULTURE - NATURAL RESOURCES - CLIMATE. . . . .	24
Agriculture. . . . .	24
Natural Resources. . . . .	24
Climate . . . . .	24
HISTORY . . . . .	25

This copy has been prepared by the Kentucky Department of Commerce, Division of Research and Planning, and the cost of printing paid from state funds.

# WHITESBURG LABOR MARKET AREA





## WHITESBURG, KENTUCKY - A RESOURCE PROFILE

### Location

Whitesburg, the county seat of Letcher County, is located in the southern Appalachians in the southeastern portion of Kentucky. Located only 5 miles from the Virginia border, Whitesburg is approximately 50 miles from both Pikeville, Kentucky, and historically rich Cumberland Gap.

### The Economic Framework

Letcher County's economy is based primarily on mining and quarrying and trade and services. In 1968, total employment in the county was 5,633 of which 2,220 were employed in mining and quarrying, and 1,064 employed in trade and services. During the same period, government accounted for 1,058 jobs, and manufacturing for 196. The county's major products are soft drinks and upholstered furniture.

Per capita income in the county in 1968 was \$1,600. This figure was substantially below the Kentucky average, indicating a real potential for economic growth.

In the labor market area, which includes Letcher and its four surrounding counties, total employment in 1968 was 36,392. Mining and quarrying accounted for 11,313, trade and services 7,359, government 8,903, and manufacturing 1,088. The area has a deficit of 2,461 manufacturing jobs when measured against the national industrial employment-population ratio. This indicates an area where the potential for additional manufacturing production is excellent. Area manufacturing development has been the sharpest in the lumber and furniture industries.

### Resources for Growth

1. There is a current labor supply of 7,080 men and 12,500 women available for industrial jobs in the labor market area. Supplementing this supply are the 12,800 boys and 12,170 girls who will become 18 years of age by 1975 and potentially available for work.
2. Energy - both electricity and water are adequate to accommodate future industrial growth.
3. Whitesburg has one industrial site to which utilities are presently being extended.

### Community Programs for Improvement

In recent years, Whitesburg has aggressively sought to provide its residents with new and better facilities and services. Recently completed is a shopping center, office building, airplane hangar, and a new water impoundment on the Kentucky River. The Daniel Boone Hotel has also been completely remodeled and redecorated.

Planned improvements for Whitesburg include the construction of a new nine-hole golf course and country club, a new municipal parking lot, low-income housing units, a new elementary school and a Letcher County Museum of History. Several street construction and modernization programs are also planned.

### Recreation, Entertainment and Livability

The City of Whitesburg provides various types of recreational facilities, including a swimming pool, a tennis court, and a Little League baseball field.

Proximity to several of Kentucky's state parks provides the Whitesburg area with additional recreational facilities, including swimming, camping, hiking, picnicking, fishing, lodging and dining facilities. Whitesburg lies only 24 miles from Cumberland, Kentucky, the home of Kingdom Come State Park. In addition, Whitesburg is 80 miles from Pine Mountain State Park, 71 miles from Jenny Wiley State Park in Prestonsburg, Kentucky, and 39 miles from Breaks Interstate Park at Elkhorn City.

## THE LABOR MARKET

### POPULATION TRENDS <sup>1/</sup>

Area	1969 (Est.)	1960	1950	Percent Change	
				1960-69	1950-60
Labor Market Area	157,600	171,694	219,791	- 8.2	-21.9
Letcher County	27,000	30,102	39,522	-91.0	-23.8
Whitesburg	2,000*	1,774	1,393	+12.7	+27.4

\*1968 Estimate.

### GENERAL EMPLOYMENT CHARACTERISTICS <sup>2/</sup>

Major Employment Group	1968	1968
	Letcher County	Labor Market Area
TOTAL	5,633	36,392
Agricultural	121	702
Nonagricultural	5,512	35,690
Manufacturing	196	1,088
Trade and Services	1,064	7,359
Government	1,058	8,903
Mining and Quarrying	2,220	11,313
Other	974	7,027

### MANUFACTURING EMPLOYMENT TRENDS BY INDUSTRY <sup>3/</sup> SEPTEMBER 1959 AND 1968

Industry	Letcher County			Labor Market Area		
	1968	1959	% Change	1968	1959	% Change
TOTAL	196	132	+ 48.5	1,078	1,116	- 3.4
Food & Kindred						
Products	66	89	- 25.8	515	540	- 4.6
Lumber & Furniture	113	18	+527.8	379	480	- 21.0
Printing, Publishing,						
Paper	3	16	- 81.3	60	62	- 3.2
Stone, Clay & Glass	14	9	+ 55.6	58	20	+190.0



LETCHER COUNTY MANUFACTURING FIRMS,  
THEIR PRODUCTS, AND EMPLOYMENT <sup>4/</sup>

Firm	Product	Employment		
		T	M	F
<u>Cromona</u>				
Superior Printing	Lithographic printing, newspaper, letter- press printing	3	1	2
<u>Ermine</u>				
Whitehouse Block Manufacturing Co., Inc.	Concrete block	12	12	0
<u>Jenkins</u>				
Leo Fugate	Septic tanks	1	1	0
<u>Neon</u>				
Crafts Frozen Custard	Ice cream	5	1	4
<u>Whitesburg</u>				
Coca Cola Bottling Works	Soft drinks	23	22	1
Electric and Machine Co.	Machine shop	41	39	2
Greene & Webb Lumber Co., Inc.	Lumber	41	40	1
Home Lumber Co.	Lumber, ready mixed concrete	20	18	2
Kentucky-West Virginia Armature	Electrical machinery parts	14	14	0
Letcher Upholstery and Manufacturing Co.	Upholstered furniture	75	60	15
W. Pearl & Martha W. Nolan	Newspaper, job printing	11	8	3
Royal Crown Bottling Co., Inc.	Carbonated beverages	45	43	2

WAGE RATES FOR SELECTED OCCUPATIONS  
WHITESBURG, KENTUCKY <sup>5/</sup>

Classification	Wages Per Hour		
	Starting	Maximum	Prevailing
<u>Production Employees</u>			
Assembler - Furniture	\$1.75	\$1.75	\$1.75
Inspector - Furniture	1.60	2.00	1.75
Production Laborer - Furniture	1.60	1.75	1.60
Sewing Machine Operator	1.60	1.75	1.60
Springer - Furniture	1.75	1.75	1.75
Block Laborer - Concrete Building	1.60	2.00	1.75
Bottling Laborer - Soft Drink	1.60	2.00	1.60

## LABOR ORGANIZATIONS

There are no unions in Whitesburg representing manufacturing workers.

### CURRENT AND FUTURE LABOR SUPPLY - LETCHER COUNTY LABOR MARKET AREA 6/

County	Current Labor Supply			Future Labor Supply by 1975 (Becoming 18 Years of Age)		
	Total	Male	Female	Total	Male	Female
Labor Market Area	19,645	7,080	12,565	24,976	12,800	12,176
Letcher	3,022	1,156	1,866	3,669	1,841	1,828
Harlan	4,267	1,337	2,930	5,976	3,039	2,937
Knott	2,490	1,222	1,268	2,250	1,171	1,079
Perry	3,206	1,275	1,931	4,639	2,433	2,206
Pike	6,660	2,090	4,570	8,442	4,316	4,126

### TOTAL PERSONAL INCOME 7/

Area	1968	1959	% Change
Letcher County	\$ 43,510,000	\$ 28,324,000	+53.6
Labor Market Area	250,830,000	174,889,000	+48.0
Kentucky	8,360,000,000	4,655,000,000	+79.6

### PER CAPITA PERSONAL INCOME 8/

Area	1968	1959	% Change
Letcher County	\$ 1,600	\$ 946	+69.1
Labor Market Area	772 to 1,689	429 to 1,089	+80.0 to +55.1
Kentucky	2,614	1,552	+68.4

## EDUCATION

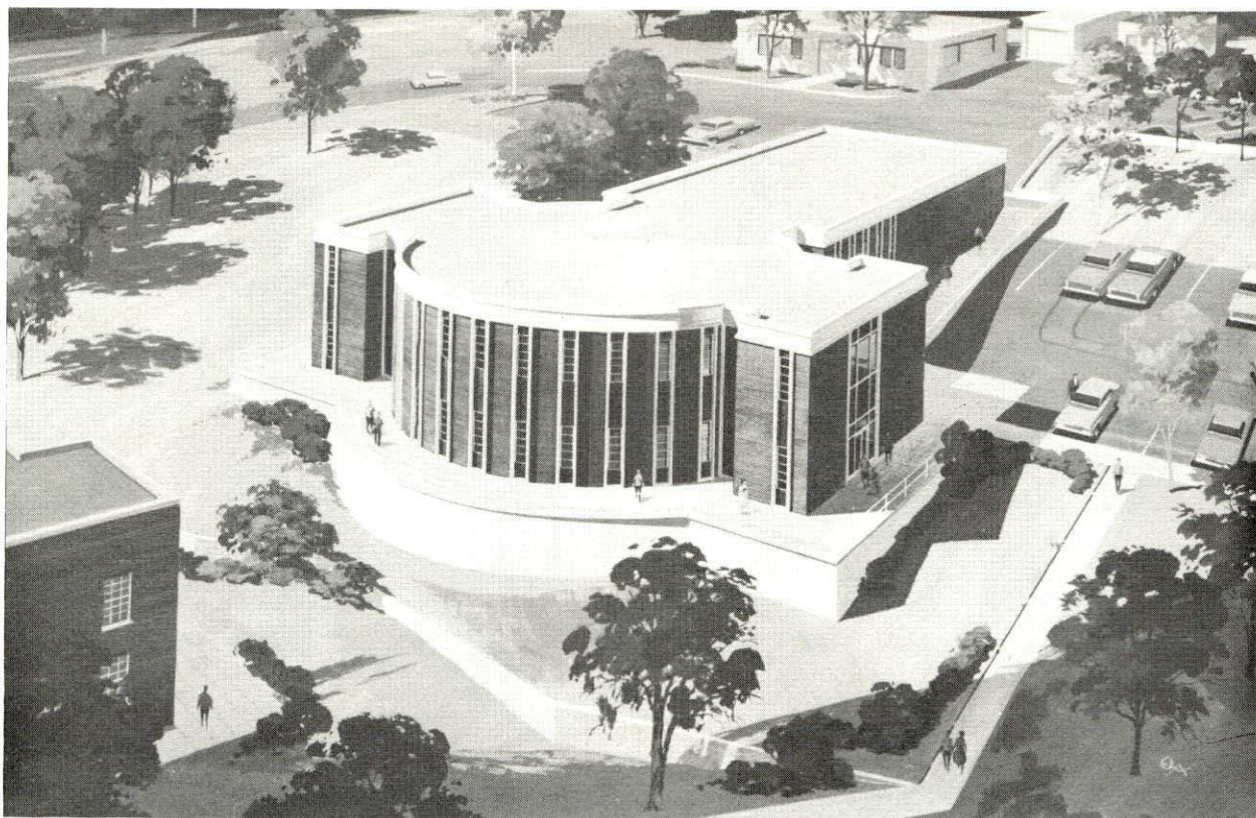
### Public Schools

	<u>Letcher County</u>
Total Enrollment	5,836
Elementary	4,208
High School	1,628
Student-Teacher Ratio	21-1
Elementary	22-1
High School	19-1
State Rating of High School	Standard
Percent High School Graduates to College	39.0
Current Expenditures Per Pupil	\$347.32
Bonded Indebtedness	\$1,399,000

### Parochial Schools

Total Enrollment	58
Elementary	58
Student-Teacher Ratio	19-1
Elementary	19-1





New Whitesburg School Building  
Library and Cafeteria Facilities



Whitesburg Athletic Field with Stadium



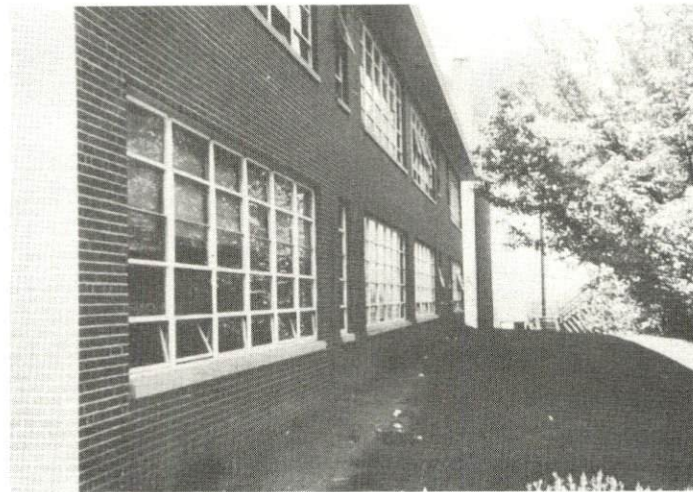
## ... Better Schools and Churches



First Baptist Church



Presbyterian Church



One of the new Whitesburg High School Buildings



Letcher County Vocational Extension Center - Whitesburg

## Vocational Schools

	<u>Nearest Area School</u>	<u>Nearest Extension Center</u>
Location	Hazard	Whitesburg
Miles Distant	34	--
Curriculum	General clerical Secretarial-steno Practical nursing Electronics Highway technology Auto body repair Auto mechanics Carpentry Cosmetology Drafting Electricity Heavy equipment Machine shop Mine machinery mechanics Welding	General clerical Secretarial-steno Auto mechanics Carpentry Drafting Electricity Welding

## Colleges and Universities

<u>Name</u>	<u>Area - Within 50 miles</u>		<u>Highest Degree Conferred</u>
	<u>Location</u>	<u>Enrollment</u>	
Hazard Community College	Hazard	162	Associate
Alice Lloyd Junior College	Pippa Passes	274	Associate
Southeastern Community College	Cumberland	457	Associate
Pikeville College	Pikeville	1,172	Baccalaureate



## TRANSPORTATION

### Rail

Lines Serving Whitesburg - Louisville & Nashville Railroad

Services - Freight, switching

### RAILWAY TRANSIT TIME FROM WHITESBURG, KENTUCKY, TO: 9/

No. of Days		No. of Days	
City	CL	City	CL
Atlanta, Ga.	4	Los Angeles, Calif.	6
Birmingham, Ala.	4	Louisville, Ky.	2
Chicago, Ill.	4	Nashville, Tenn.	3
Cincinnati, Ohio	2	New Orleans, La.	5
Cleveland, Ohio	4	New York, N. Y.	5
Detroit, Mich.	5	Pittsburgh, Pa.	4
Knoxville, Tenn.	3	St. Louis, Mo.	3

### Truck Service

#### Company

Bell Lines, Inc.  
 Conken Freight Lines, Inc.  
 Hazard Express  
 Hogan Storage & Transfer Co.  
 Meade Transfer Company  
 Point Express, Inc.  
 Smith's Transfer Corporation  
 of Virginia

#### Home Office

Charleston, West Virginia  
 Harlan, Kentucky  
 Lexington, Kentucky  
 Williamson, West Virginia  
 Neon, Kentucky  
 Charleston, West Virginia  
 Staunton, Virginia

HIGHWAY MILES AND TRUCK TRANSIT TIME IN DAYS FROM  
WHITESBURG, KENTUCKY, TO SELECTED MARKET CENTERS

City	Highway Miles	Delivery Time		City	Highway Miles	Delivery Time <sup>10/</sup>	
		LTL	TL			LTL	TL
Atlanta, Ga.	345	3	2	Los Angeles, Calif.	3,333	7	7
Birmingham, Ala.	378	3	2	Louisville, Ky.	215	3	2
Chicago, Ill.	545	3	2	Nashville, Tenn.	349	3	2
Cincinnati, Ohio	218	2	1	New Orleans, La.	972	4	3
Cleveland, Ohio	495	3	2	New York, N. Y.	623	3	2
Detroit, Mich.	509	3	2	Pittsburgh, Pa.	445	3	2
Knoxville, Tenn.	153	3	2	St. Louis, Mo.	485	3	2

Air

	<u>Local</u>	<u>Nearest Commercial</u>
Location:	Whitesburg	Johnson City, Tennessee
Runways:	1 paved	2 paved
Length:	2,550 x 75 feet	6,600 ft; 4,441 ft.
Traffic Control:	Wind sock	
Lighting:	None	Beacon
Services:	80-100 octane, hangar	Storage, tie-down, auxiliary power unit, luggage carts, loading ramps, oxygen servicing, charter service, Piedmont, Southern, United

Bus      VTC Bus Lines

Taxi      Alvin Adams Taxi, Astor Blair Cabs, Preston Blair Cab,  
Sturgill & Collier Taxi, Webb & Gilliam Taxi

## POWER AND FUEL

### Electricity

Company serving Whitesburg and Letcher County - Kentucky Power Company

Source of power - American Electric Power Company

Total generating capacity:

Kentucky Power Company - 1,080,000 KW

American Electric Power Company - 11,600,000 KW

Industrial rates negotiated by - Kentucky Power Company, Ashland, Kentucky

### Natural Gas

Whitesburg does not have natural gas facilities.

There are three LP gas dealers in the Whitesburg area.



## WATER AND SEWERAGE

### Water

Company serving Whitesburg - Whitesburg Municipal Water Works  
Source - Kentucky River and deep wells  
Treatment plant capacity - 500,000 gpd  
Average daily consumption - 200,000 gallons  
Peak daily consumption - 275,000 gallons  
Type treatment - aeration, filtration, clarification, flocculation,  
settling, and chlorination  
Storage capacity - 315,000 gallons  
Average pressure - 90 psi  
Size mains - 2-8 inches

#### MONTHLY WATER RATES FOR WHOLESALE AND INDUSTRIAL CONSUMERS

First	2,000 gallons	\$4.00 Minimum
Next	2,000 gallons	1.50 per 1,000 gallons
Next	2,000 gallons	1.35 per 1,000 gallons
Next	5,000 gallons	1.20 per 1,000 gallons
Next	15,000 gallons	1.05 per 1,000 gallons
Next	25,000 gallons	.95 per 1,000 gallons
Next	50,000 gallons	.80 per 1,000 gallons
All over	101,000 gallons	.50 per 1,000 gallons

Surface water sources - Middle Fork of Kentucky River, Poor Fork of  
Cumberland River  
Average discharge - Poor Fork - 139 cfs; Kentucky River - 559 cfs  
Expected ground water yield - 50-200 gpm; south central part of county -  
5-50 gpm  
Yield along main streams - 200 gpm

### Sewerage

Company serving - Municipal  
Design capacity - 175,000 gallons per day  
Average daily flow - 120,000 gallons  
Treatment - primary and secondary  
Type treatment - drying beds  
Treated effluent discharged into - Kentucky River  
Size of sanitary mains - 8 and 12 inches  
Rates - 1/2 of the monthly water bill

## LOCAL GOVERNMENT

### City

Structure - Mayor - 4-year term; 5 councilmen - 2-year terms  
Budget, 1967 - \$48,263.60  
Fees and licenses - range from \$7.50 to \$300

### County

Structure - County judge - 4-year term; 3 magistrates - 4-year terms  
Budget, 1968-69 - General Fund \$212,104; Road Fund \$246,000

### Assessed Value of Property - 1969

<u>Classes of Property*</u>	<u>Whitesburg</u>	<u>Letcher County</u>
Real Estate	\$4,558,000	\$35,662,900
Tangibles	1,767,500	25,995,400
Public Service**	718,828	10,769,141

### Local General Property Tax Rates Per \$100 of Assessed Valuation - 1968

<u>Taxing Unit ***</u>	<u>Whitesburg</u>	<u>Letcher County</u>
State	\$ .015	\$ .015
County	.320	.320
School	.582	.582
City	<u>.240</u>	<u>          </u>
Total	\$1.157	\$ .917

\*Property assessed at 100 percent of fair value.

\*\*1968 estimate.

\*\*\*Manufacturing machinery, raw materials inventories and goods in process inventories are not subject to local tax. State rate is only \$0.15 per \$100.

## Planning and Zoning

Agency - Whitesburg Planning Commission

Plans completed - Comprehensive plan

Plans in process - Zoning Ordinance, Subdivision Regulations, Neighborhood Analysis, Public Improvements Program

## Safety

### Police

	<u>Whitesburg</u>	<u>Letcher County</u>
Total staff	3	6
Radio-patrol cars	1	2

### Fire

American Insurance

Association Fire Rating 7 and 9

Full-time staff 1 (AVFW Volunteer Company serves outside city limits)

Volunteers 22

Equipment:

300 gpm pumper 1

500 gpm pumper 1

750 gpm pumper 1

panel truck 1

## Sanitation

### Whitesburg

Type service municipal

Cost per month \$4-\$25 - Business  
\$2 - Residential

Collection frequency Business - daily  
Residential - twice weekly

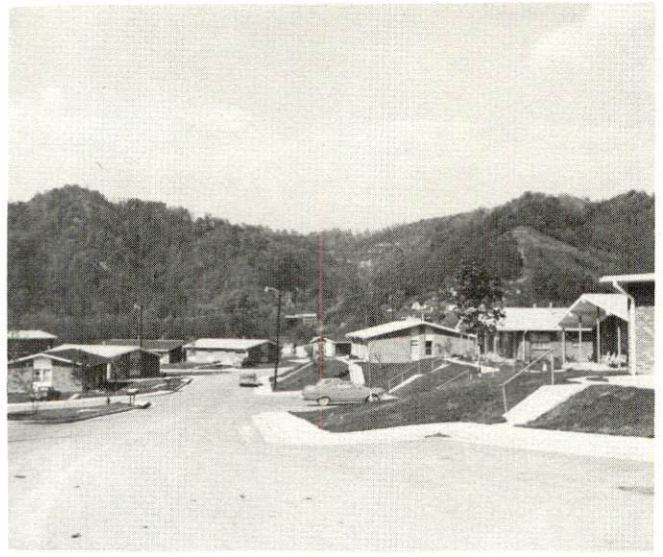
Disposal method City dump



## ... Better Housing



Fine Residential Areas



Whitesburg Municipal Housing

## and Hospital Facilities



Whitesburg Appalachian Hospital



New Letcher County Health Department

## HEALTH

### Hospitals

	<u>Number</u>	<u>Beds</u>
General hospitals	1	92
General hospital facilities - general medical care, obstetrics, surgery, physical therapy, inpatient and outpatient service, laboratory, X-ray services, intensive care, and a home health service		
Medical staff - 8 doctors, 16 registered nurses, 26 licensed practical nurses		

### Public Health

Facility - Letcher County Health Department  
Staff - Doctor (part-time), 3 nurses (full-time), sanitarian, 3 clerks  
Budget, 1968-69 - \$55,236.38



## ... Better Local Government



Letcher County Courthouse



Municipal Building, Whitesburg



## OTHER LOCAL FACILITIES

### Communications

Telephone - South Central Bell Telephone Company  
Services - standard

Telegraph - Western Union  
Services - office in Suburban Motel

Postal - Second-class U. S. Post Office  
Mail received - 4 times daily  
Mail dispatched - 4 times daily

Newspaper weeklies - Mountain Eagle; Letcher Community Press  
Circulation - Mountain Eagle - 3,200

Radio - WTCN - AM and FM  
Hours of operation AM - 6 a.m. - 11 p.m.  
Hours of operation FM - 6 a.m. - 11 p.m.  
Stations received from - Norton, Virginia, and Nashville, Tennessee

Television - No local station  
Cable service - Salyer Radio Company, 2 translators  
Reception from - Huntington, West Virginia, and Knoxville, Tennessee  
Kentucky Educational Television - Hazard transmitter

### Library Services

Public libraries - Letcher County Public Library  
Size collection - 14,000 volumes  
Circulation (average annual) - 95,000  
Services - movie projectors, slides, sporting goods, story hour,  
duplicate bridge, historical society meetings

### Religious Institutions

Number of churches - 5  
Denominations - Baptist, Church of God, Methodist, Mormon,  
Presbyterian

### Financial Institutions

<u>Bank</u>	<u>Statement as of June 29, 1968</u>	
	<u>Assets</u>	<u>Deposits</u>
First Security Bank	\$ 4,591,311.09	\$ 4,208,642.89
The Bank of Whitesburg	14,682,589.86	13,501,345.98

### Hotels and Motels

Daniel Boone Hotel	74 rooms
Johnson Motel	17 units
Pine Mountain Hotel and Motel	18 units
Suburban Motel	28 units

### Clubs and Organizations

Business and Civic - Jaycees, Kiwanis, Lions, Rotary, Medical Society, Dental Society, Ministerial Association, Salvation Army, Red Cross

Fraternal - American Legion, Masonic Lodge, VFW

Women's - Women's Club, B & PW Club, DAR, Eastern Star, Homemakers, Garden Club, Lioness, Jaycettes, American Legion Auxiliary, VFW Auxiliary, Historic Society

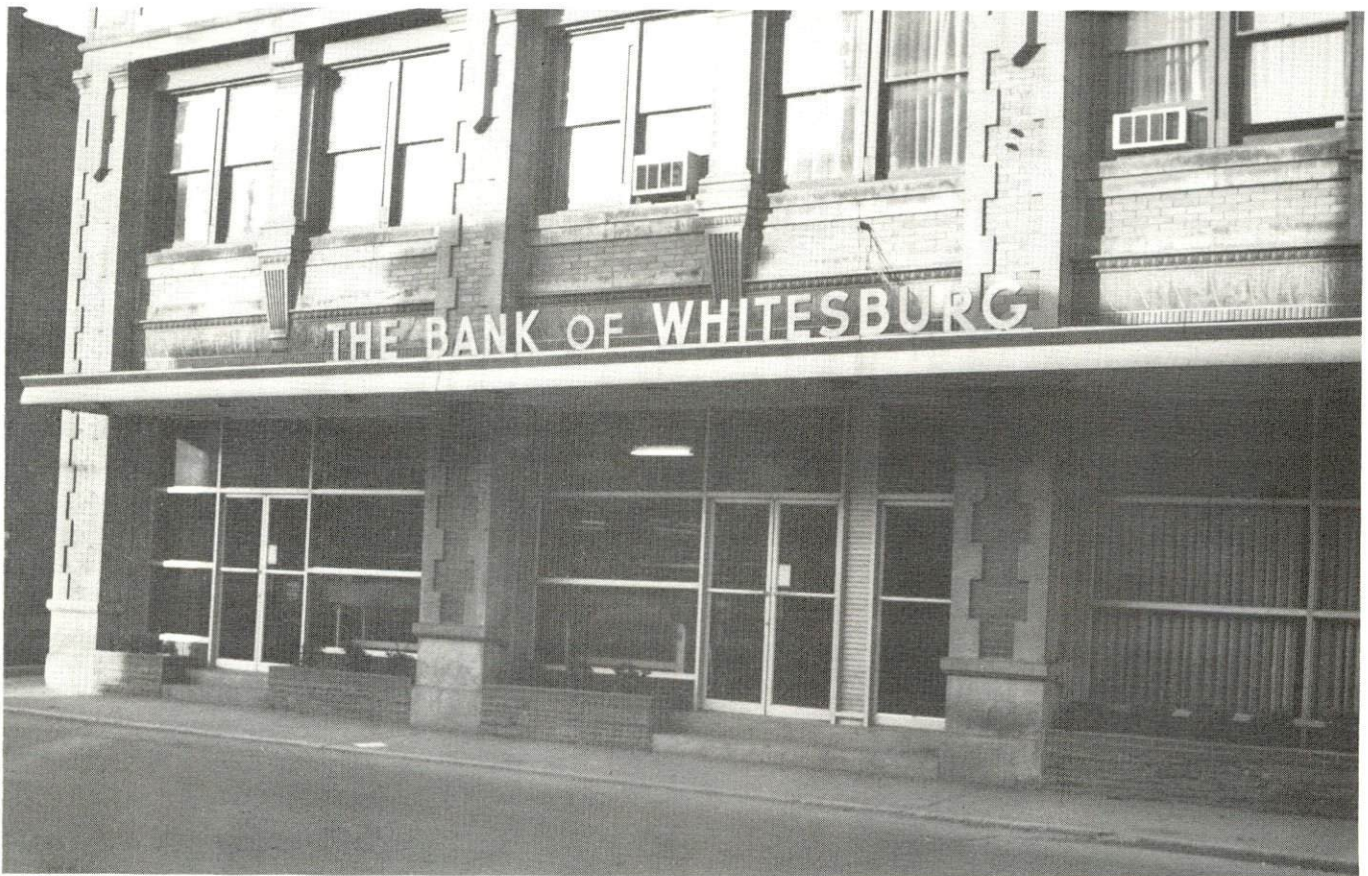
Youth - Boy Scouts, Girl Scouts, Cub Scouts, Brownies, FFA, FHA, 4-H, Beta Club, FBLA, Little League Baseball, Little League Football, FTA



## ... Better Financial Institutions

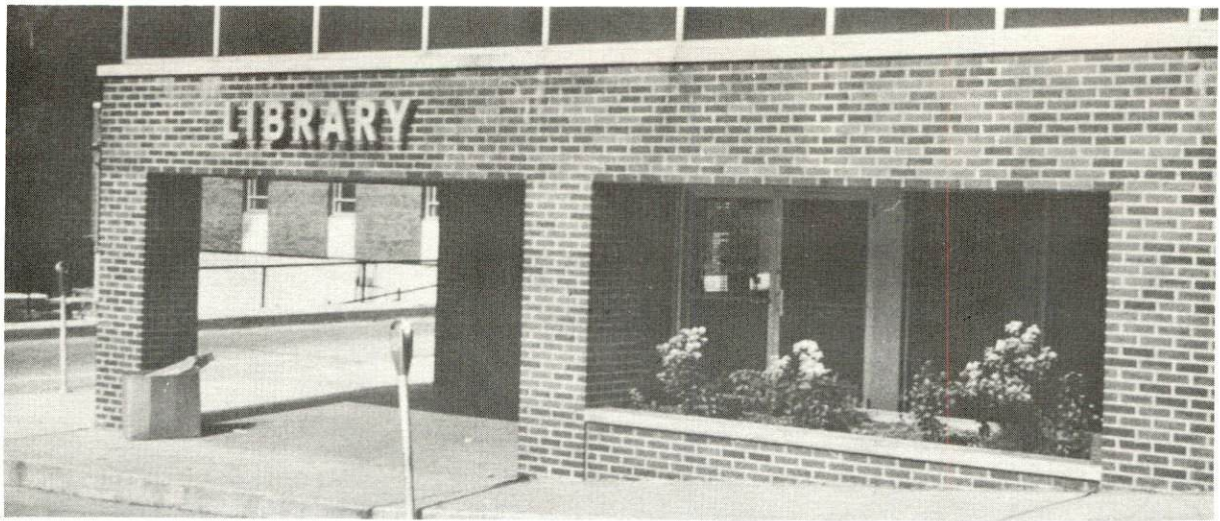


First Security Bank

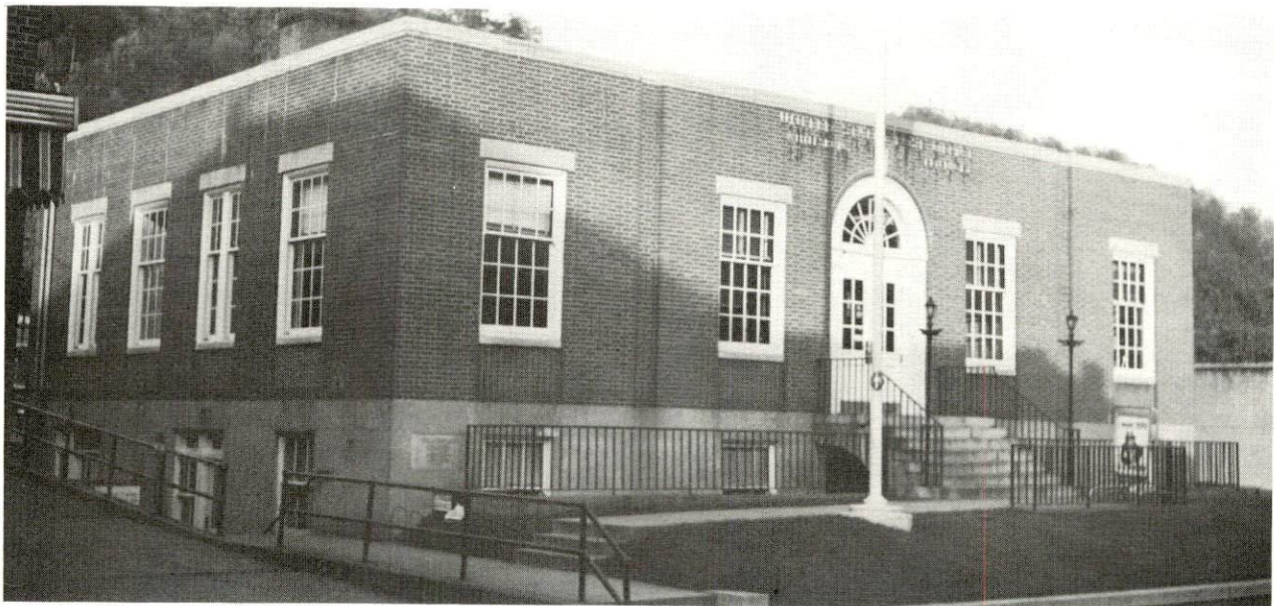


The Bank of Whitesburg

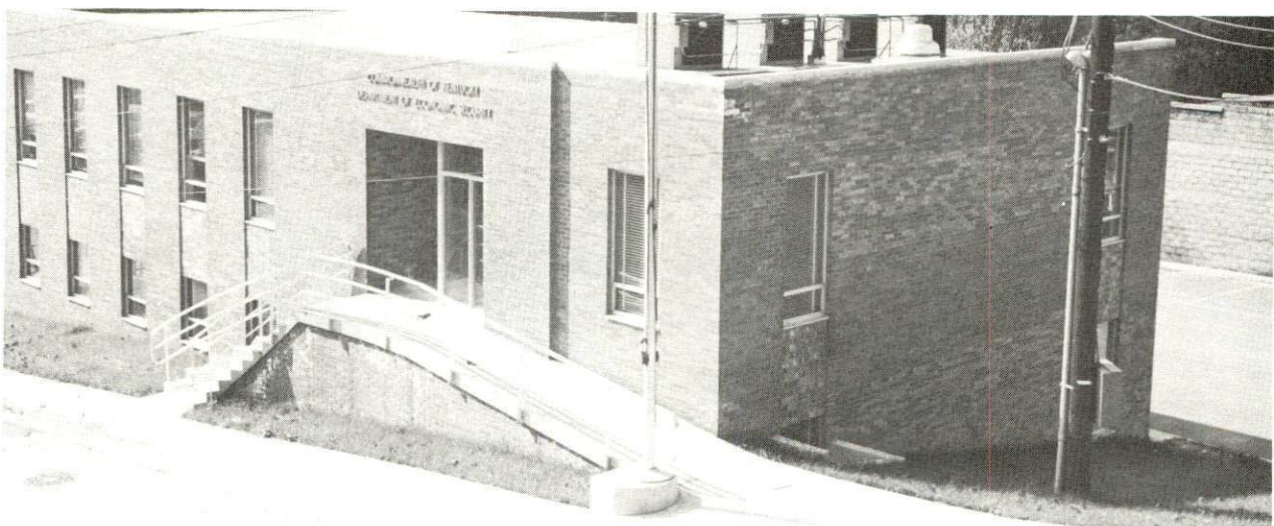




New Letcher County Library



U.S. Post Office - Whitesburg



New Commonwealth of Kentucky Office Building

## RECREATION

### Local

#### Public Recreation Facilities

- Parks - 1
- Swimming pools - 1
- Tennis courts - 2
- Baseball diamonds - 1
- Football fields - 1

#### Private Recreation Facilities

- Movie theaters - 1

### Area (Within 25 miles)

- State Parks - Kingdom Come State Park



# AGRICULTURE - NATURAL RESOURCES - CLIMATE 11/

## Agriculture

	<u>Letcher County</u>	<u>Labor Market Area</u>
Total land area	216,960 acres	1,467,520 acres
Percent of area in farm land	11.4 percent	13.1 percent
Number of farms	344	2,193
Average size of farms	71.9 acres	87.7 acres
1964 value of all farm products	\$189,765	\$767,504
Value per farm	\$ 552	\$ 350
Total crop sales	\$ 33,891	\$219,189
Total livestock & livestock products	\$155,874	\$547,102
1967 agricultural production included:		
Burley tobacco	9,000 lbs.	69,000 lbs.
Corn	21,000 bu.	94,000 bu.
Cattle and calves	800 head	5,900 head
Hogs and pigs	900 head	4,600 head
Milk production (1966)	1,000,000 lbs.	9,200,000 lbs.

## Natural Resources

Principal mineral resources	Coal
Other mineral resources	Limestone, petroleum, natural gas, sand and sandstone, clay
Acres of commercial forest land	182,200
Most abundant tree species	Red oak, white oak, yellow poplar, hickory, beech, soft maple, hard maple, blackgum

## Climate

Temperature	
Annual mean	56.8° (30-year record)
Average annual 1968	54.6°
Record highest June, 1966	95.0° (7-year record)
Record lowest January, 1966	-15.0° (7-year record)
Mean annual degree-days	4,143 (30-year record)
Precipitation	
Mean annual total	41.06 inches (30-year record)
Mean annual snow and sleet	15.50 inches (31-year record)
Total precipitation 1968	32.79 inches
Mean number days precipitation	132 (23-year record)
Average number days thunderstorms	46 (25-year record)
Prevailing winds	West-southwest (9-year record)



## HISTORY

Letcher County was established in 1842 as the ninety-fifth county in Kentucky. It was named for Robert C. Letcher, Governor of Kentucky when the county was established. Whitesburg, the county seat, was named for Daugherty White, whose son, John D. White was a member of the state Legislature when the county was established.

The county's first settlement was made by John Adams in 1804 about 2 miles from present-day Whitesburg. The early economy of Letcher County consisted of hunting for fur, trade and farming. Mining is also a significant factor in the economy.

Daniel Boone often hunted in this area, near the headwaters of the Kentucky River. The area is described in the books of John Fox, Jr., The Little Shepherd of Kingdom Come and A Knight of the Cumberlands.

## SOURCES OF INFORMATION

- 1/ U. S. Department of Commerce, Bureau of the Census, Census of Population, 1950, 1960. Department of Rural Sociology, University of Kentucky, Kentucky County Provisional Population Estimates: January 1, 1969. Whitesburg-Letcher County Development Foundation, Whitesburg, Kentucky.
- 2/ Kentucky Department of Economic Security, Division of Research and Statistics.
- 3/ Kentucky Department of Economic Security, Number of Workers in Manufacturing Industries Covered by Kentucky Unemployment Insurance Law Classified by Industry and County, September 1959, September 1968.
- 4/ Kentucky Department of Commerce, 1969 Kentucky Directory of Manufacturers.
- 5/ Kentucky Department of Economic Security, Division of Employment Service, Hazard Office.
- 6/ Kentucky Department of Economic Security, Kentucky Labor Supply Estimates by County, January 1969. Kentucky Department of Commerce, Future Labor Supply By 1975.
- 7/ University of Kentucky, Office of Development Services and Business Research, Total Personal Income For Kentucky.
- 8/ University of Kentucky, Office of Development Services and Business Research, Per Capita Income in Kentucky.
- 9/ Freight Agents, Louisville & Nashville Railroad, Whitesburg, Kentucky.
- 10/ Point Express, Inc., Charleston, West Virginia.
- 11/ U. S. Department of Commerce, Bureau of the Census, Census of Agriculture, 1964. U. S. Department of Commerce, Environmental Science Services Administration, Climatological Data, 1967.

All other information was obtained from governmental offices, local businesses and organizations.