

1970

# Industrial Resources: Lyon County

Kentucky Library Research Collections  
Western Kentucky University, [spcol@wku.edu](mailto:spcol@wku.edu)

Follow this and additional works at: [https://digitalcommons.wku.edu/lyon\\_cty](https://digitalcommons.wku.edu/lyon_cty)



Part of the [Business Administration, Management, and Operations Commons](#), [Growth and Development Commons](#), and the [Infrastructure Commons](#)

---

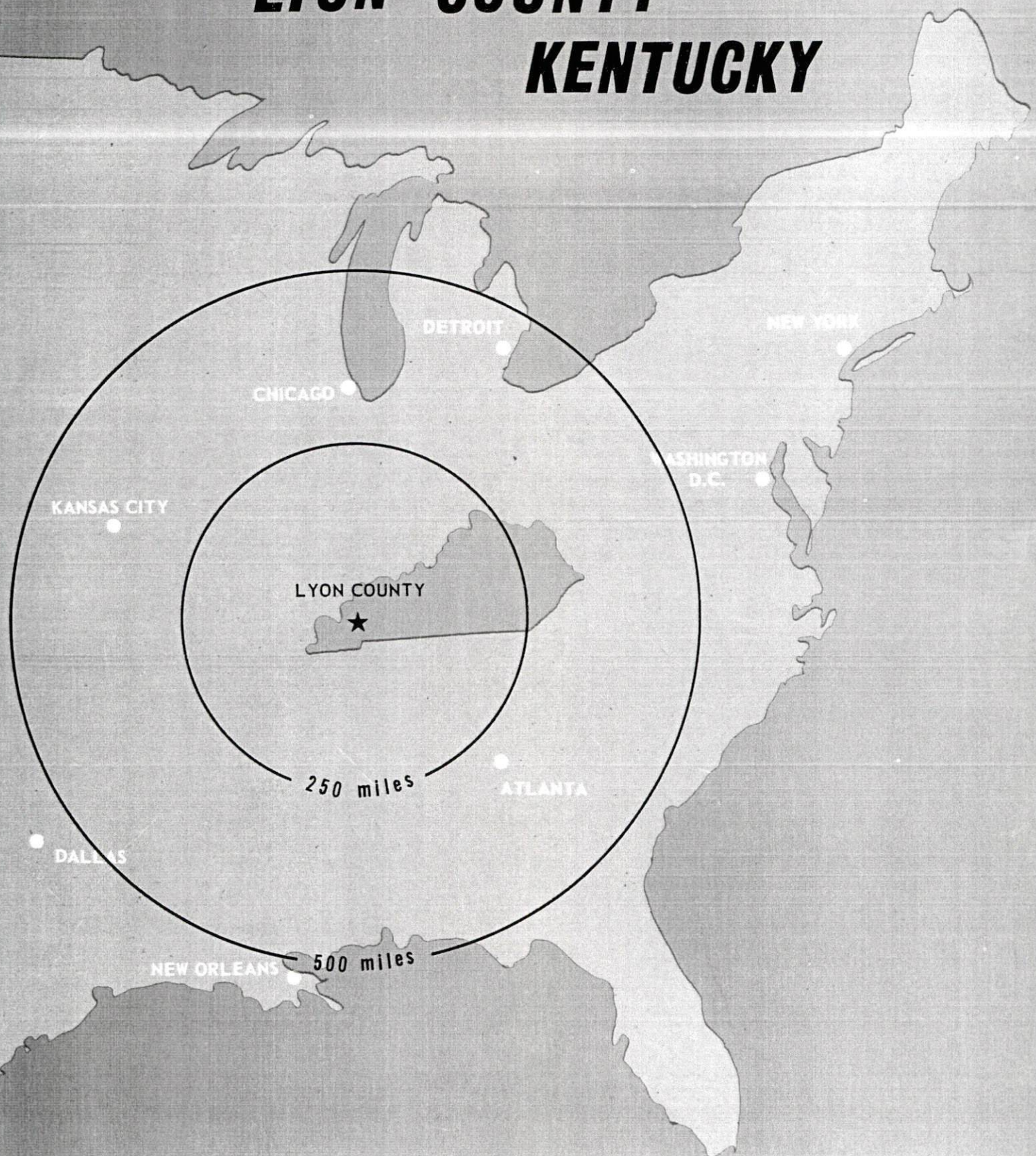
## Recommended Citation

Kentucky Library Research Collections, "Industrial Resources: Lyon County" (1970). *Lyon County*. Paper 12.  
[https://digitalcommons.wku.edu/lyon\\_cty/12](https://digitalcommons.wku.edu/lyon_cty/12)

This Report is brought to you for free and open access by TopSCHOLAR®. It has been accepted for inclusion in Lyon County by an authorized administrator of TopSCHOLAR®. For more information, please contact [topscholar@wku.edu](mailto:topscholar@wku.edu).

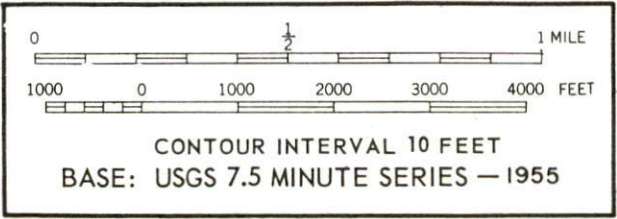
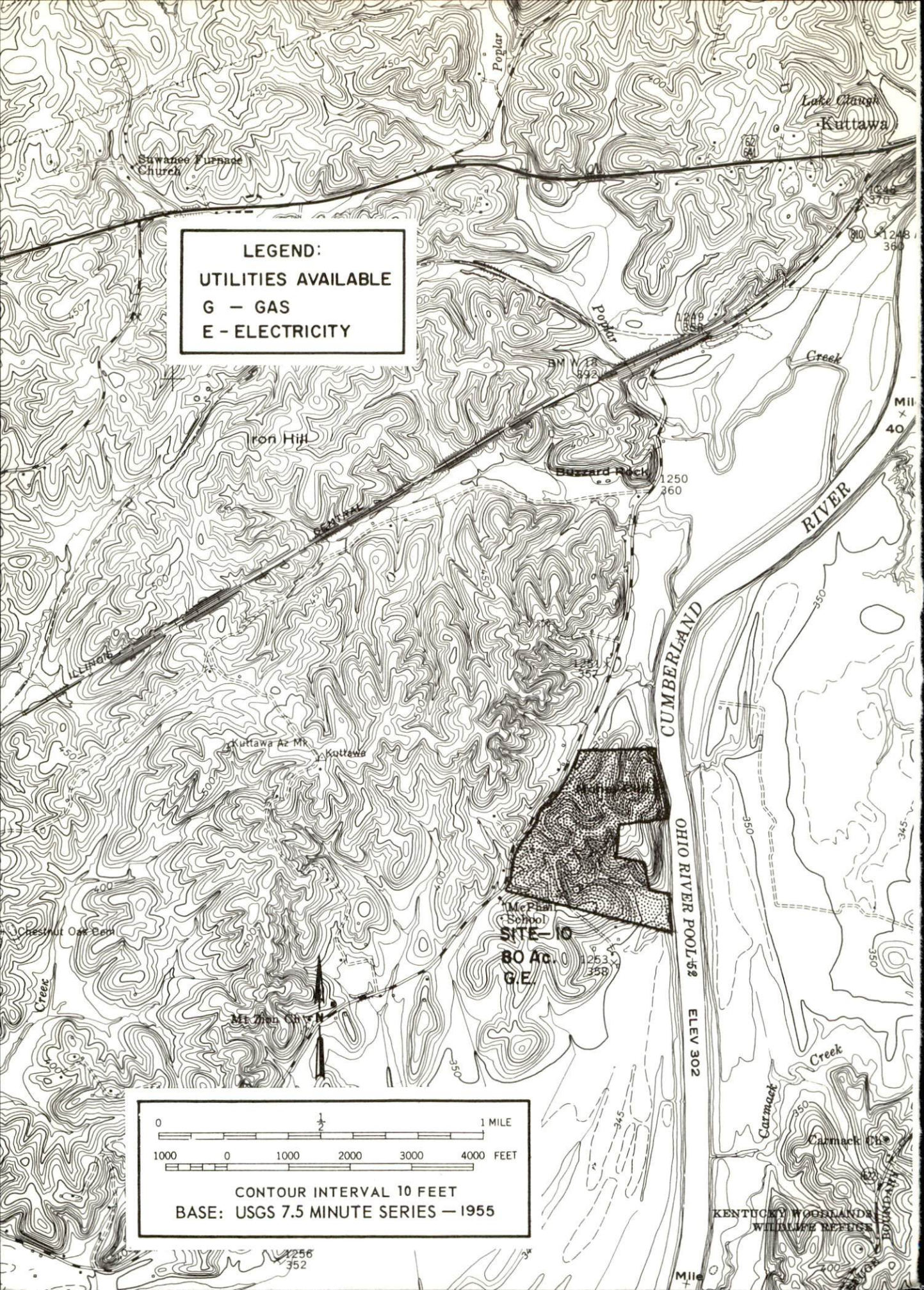
# INDUSTRIAL RESOURCES

## ***LYON COUNTY*** ***KENTUCKY***



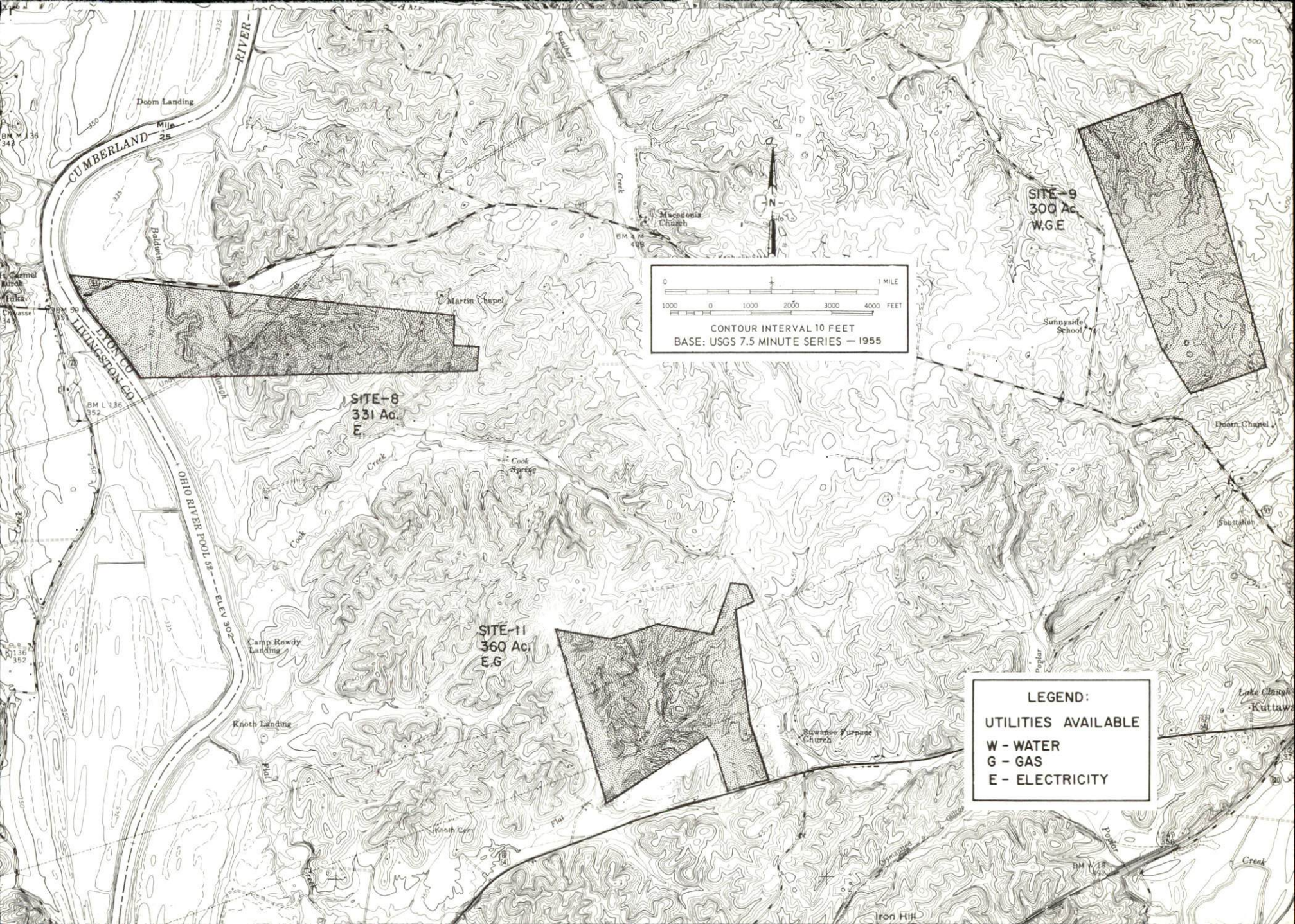


**LEGEND:**  
**UTILITIES AVAILABLE**  
G - GAS  
E - ELECTRICITY



KENTUCKY WOOLANDS  
WILDLIFE REFUGE





CUMBERLAND RIVER

Dobm Landing

25

Baden

LIVINGSTON CO

OHIO RIVER POOL 52

ELEV 302

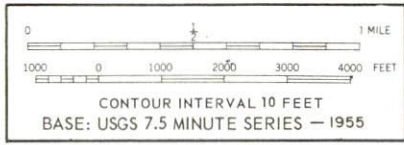
Camp Rowdy Landing

Knoth Landing

Martin Chapel

SITE-8  
331 Ac.  
E

SITE-11  
360 Ac.  
E.G



SITE-9  
300 Ac.  
W.G.E

Sunnyvale School

Doom Chapel

Seaboard

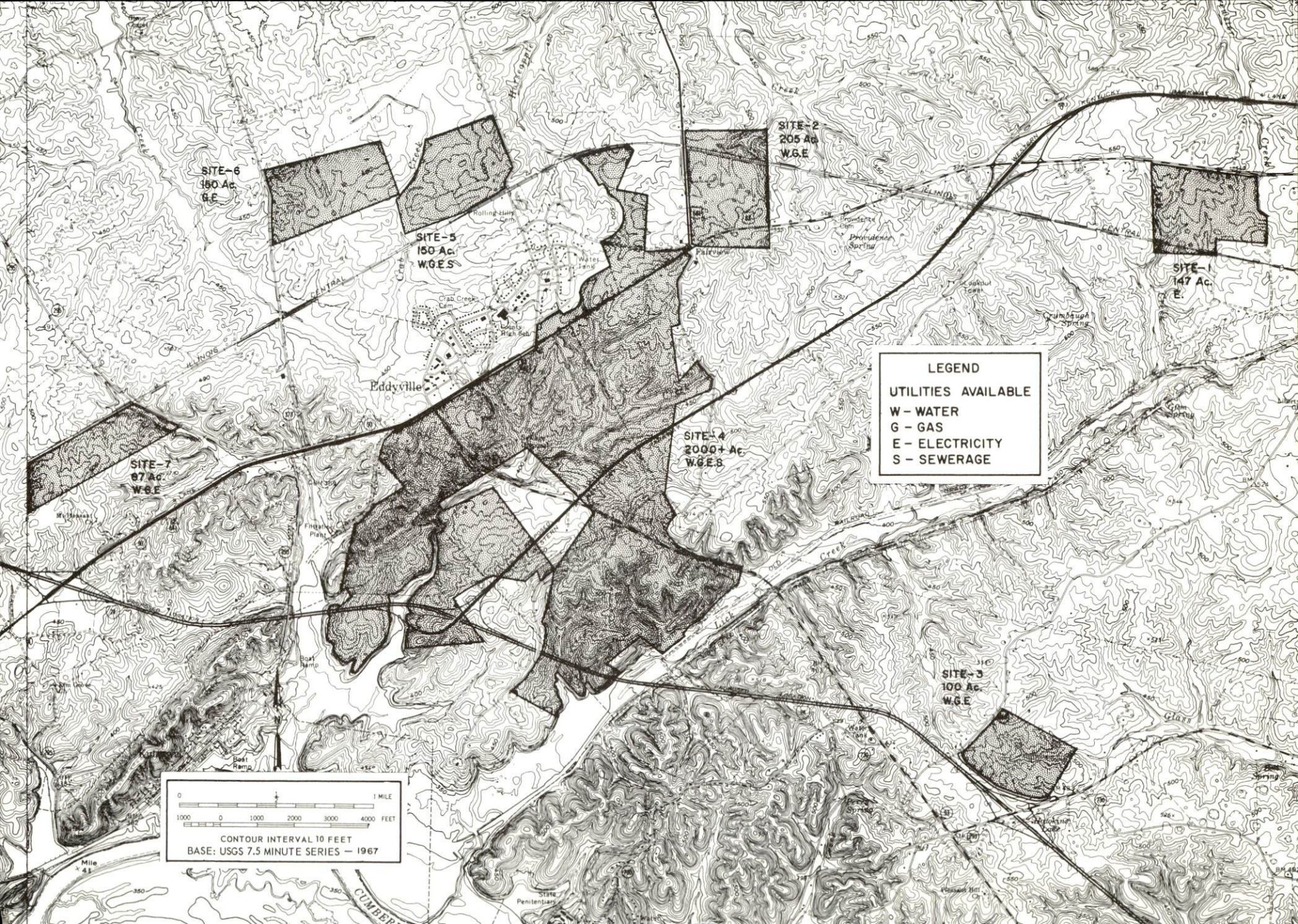
Lake Church  
Kuttaw

LEGEND:  
UTILITIES AVAILABLE  
W - WATER  
G - GAS  
E - ELECTRICITY

Sawasee Church

Iron Hill







EDDYVILLE-KUTTAWA INDUSTRIAL SITES  
1970

For further information concerning the following sites, contact Mr. Eugene Denny, Eddyville, Kentucky; Mr. J. Phillip Glenn, Kuttawa, Kentucky; or the Kentucky Department of Commerce, Frankfort, Kentucky.

- SITE #1: ACREAGE AND TOPOGRAPHY: 147 acres, gently rolling  
LOCATION: 4 miles east of Eddyville  
ZONING: None  
HIGHWAY ACCESS: U.S. 62 borders north side of site.  
RAILROAD: Illinois Central bisects the site.  
WATER: Municipal, 6-inch line 3 miles from site  
GAS: Western Kentucky Gas Company, 2-inch line 3 miles from site  
ELECTRICITY: Kentucky Utilities Company  
SEWERAGE: Package plant necessary  
OWNERSHIP: Private
- SITE #2: ACREAGE AND TOPOGRAPHY: 205 acres, level to gently rolling  
LOCATION: 200 feet east of Eddyville  
ZONING: None  
HIGHWAY ACCESS: U.S. 62 and U.S. 641 border site.  
RAILROAD: Illinois Central  
WATER: Municipal, 6-inch line  
GAS: Western Kentucky Gas Company, 2-inch line  
ELECTRICITY: Kentucky Utilities Company  
SEWERAGE: Municipal, 1 mile from site  
OWNERSHIP: Private
- SITE #3: ACREAGE AND TOPOGRAPHY: 100 acres, rolling  
LOCATION: One-fourth mile southeast of Eddyville city limits  
ZONING: None  
HIGHWAY ACCESS: Kentucky 293 and 818, Interstate 24 Interchange now under construction borders site.  
RAILROAD: Not rail served  
WATER: Princeton municipal, 16-inch line, 1,000 feet from site  
GAS: Kuttawa Municipal Gas Company, 2-inch line one-fourth mile from site  
ELECTRICITY: Kentucky Utilities Company  
SEWERAGE: Package plant necessary  
OWNERSHIP: Private
- SITE #4: ACREAGE AND TOPOGRAPHY: 2,000 or more acres, gently rolling  
LOCATION: Eddyville city limits  
ZONING: Agricultural  
HIGHWAY ACCESS: U.S. 62 and 641, and Kentucky 93 bisect northern section of site.  
RAILROAD: Illinois Central at northern border  
WATER: Eddyville municipal at north, 8-inch line  
GAS: Western Kentucky Gas Company at north border, 2-inch line  
ELECTRICITY: Kentucky Utilities Company  
SEWERAGE: Municipal  
OWNERSHIP: Private
- SITE #5: ACREAGE AND TOPOGRAPHY: 150 acres, gently rolling  
LOCATION: One-fourth mile north of Eddyville  
ZONING: None  
HIGHWAY ACCESS: U.S. 62, paved county road  
RAILROAD: Illinois Central borders on south.  
WATER: Municipal, 8-inch line one-fourth mile from site  
GAS: Western Kentucky Gas Company  
ELECTRICITY: Kentucky Utilities Company  
SEWERAGE: Municipal, one-fourth mile from site  
OWNERSHIP: Private
- SITE #6: ACREAGE AND TOPOGRAPHY: 150 acres, gently rolling  
LOCATION: 4, 100 feet north of Eddyville  
ZONING: None  
HIGHWAY ACCESS: Kentucky 373  
RAILROAD: Illinois Central  
WATER: Municipal, 8-inch line 8,000 feet from site  
GAS: Western Kentucky Gas Company, 2-inch line, 1,200 feet from site  
ELECTRICITY: Kentucky Utilities Company  
SEWERAGE: Municipal, 4,100 feet from site  
OWNERSHIP: Private
- SITE #7: ACREAGE AND TOPOGRAPHY: 87 acres, rolling  
LOCATION: 1,400 feet east of Kuttawa  
ZONING: None  
HIGHWAY ACCESS: Kentucky 295  
RAILROAD: Illinois Central  
WATER: Kuttawa municipal, 6-inch line, 1,500 feet from site  
GAS: Kuttawa municipal, 2-inch line, 1,500 feet from site  
ELECTRICITY: Henderson-Union RECC  
SEWERAGE: Package plant necessary  
OWNERSHIP: Private
- SITE #8: ACREAGE AND TOPOGRAPHY: 331 acres, level to hilly  
LOCATION: 5 miles west of Kuttawa  
ZONING: None  
HIGHWAY ACCESS: Kentucky 93  
RAILROAD: Not rail served  
WATER: Surface water from Cumberland River  
GAS: Kuttawa municipal - three-fourth mile from site  
ELECTRICITY: Henderson-Union RECC  
SEWERAGE: Package plant necessary  
OWNERSHIP: Private
- SITE #9: ACREAGE AND TOPOGRAPHY: 300 acres, gently rolling  
LOCATION: Three-fourth mile north of Kuttawa  
ZONING: None  
HIGHWAY ACCESS: Kentucky 193, access to U.S. 62 and 641 is provided by a heavy duty, hard surface county road.  
RAILROAD: Illinois Central bisects the site.  
WATER: Municipal, seven-tenths mile from site  
GAS: Municipal, 2-inch line  
ELECTRICITY: Henderson-Union RECC  
SEWERAGE: Package plant necessary  
OWNERSHIP: Private
- SITE #10: ACREAGE AND TOPOGRAPHY: 80 acres, rolling  
LOCATION: 4 miles south of Kuttawa  
ZONING: None  
HIGHWAY ACCESS: U.S. 72, Kentucky 18  
RAILROAD: Not rail served  
WATER: None  
GAS: Municipal, 4-inch line  
ELECTRICITY: Henderson-Union RECC  
SEWERAGE: Package plant  
OWNERSHIP: Private
- SITE #11: ACREAGE AND TOPOGRAPHY: 360 acres, gently rolling to hilly  
LOCATION: 3 miles west of city limits  
ZONING: None  
HIGHWAY ACCESS: Fronts on U.S. 62 and 641  
RAILROAD: Not rail served  
WATER: None  
GAS: Municipal, 2-inch line  
ELECTRICITY: Henderson-Union RECC  
SEWERAGE: Package plant necessary  
OWNERSHIP: Private



INDUSTRIAL RESOURCES  
LYON COUNTY, KENTUCKY

Prepared by  
The Kentucky Department of Commerce  
in cooperation with  
K. E. L. L. Chamber of Commerce

1970



# TABLE OF CONTENTS

<u>Chapter</u>	<u>Page</u>
INDUSTRIAL SITES . . . . .	i
LYON COUNTY, KENTUCKY - A RESOURCE PROFILE . . . . .	1
THE LABOR MARKET. . . . .	3
Population Trends . . . . .	3
General Employment Characteristics. . . . .	3
Manufacturing Employment Trends by Industry . . . . .	3
Lyon County Manufacturing Firms, Their Products, and Employment . . . . .	4
Wage Rates for Selected Occupations . . . . .	4
Labor Organizations . . . . .	4
Current and Future Labor Supply . . . . .	5
Total Personal Income . . . . .	5
Per Capita Personal Income. . . . .	5
EDUCATION . . . . .	6
Public Schools . . . . .	6
Vocational Schools . . . . .	6
Colleges and Universities . . . . .	7
TRANSPORTATION . . . . .	8
Rail . . . . .	8
Truck Service . . . . .	8
Air. . . . .	9
Bus. . . . .	9
POWER AND FUEL. . . . .	10
Electricity . . . . .	10
Natural Gas . . . . .	10
WATER AND SEWERAGE . . . . .	11
Water. . . . .	11
Sewerage . . . . .	12

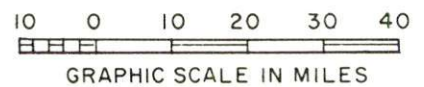
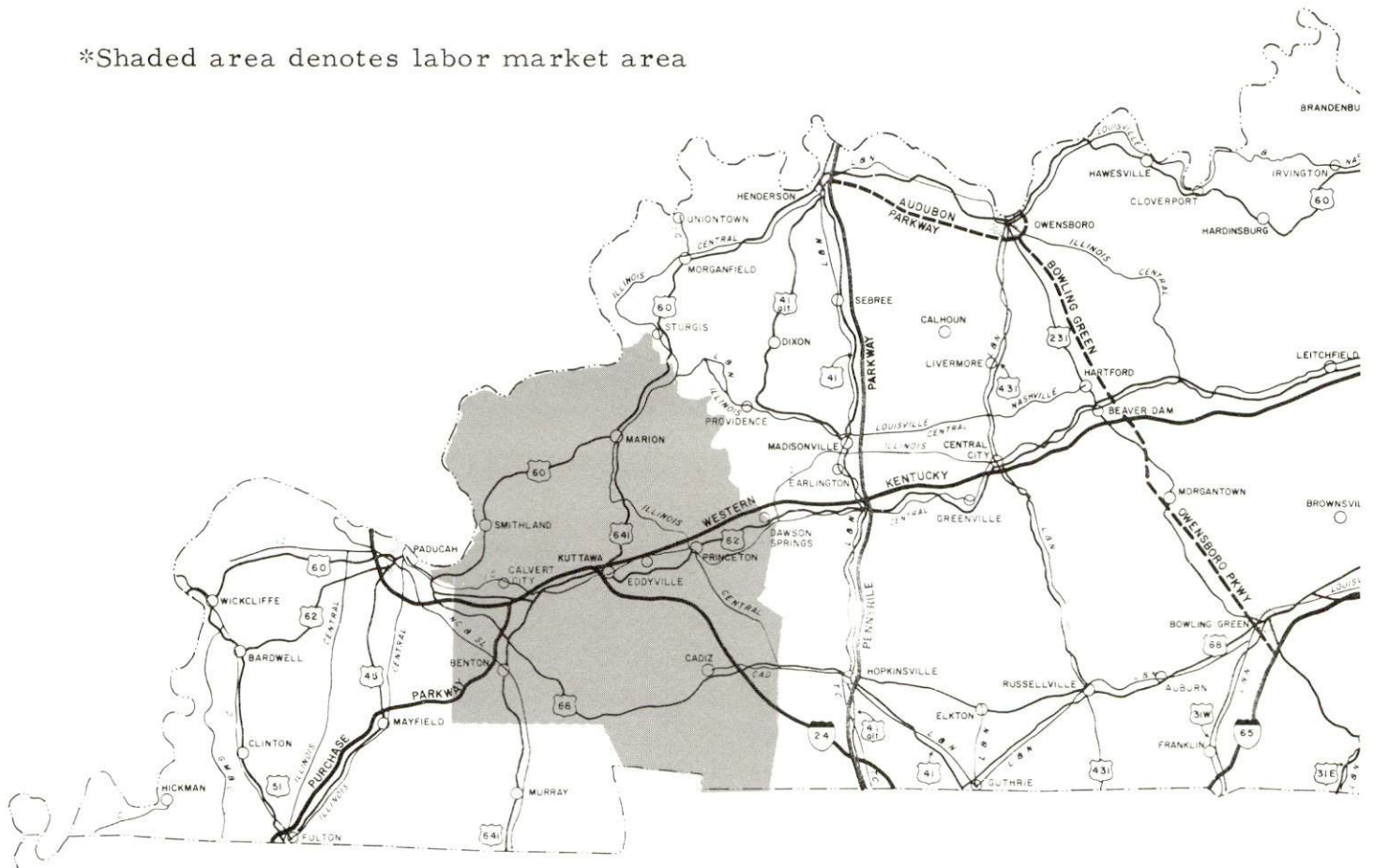


<u>Chapter</u>	<u>Page</u>
LOCAL GOVERNMENT . . . . .	.13
City . . . . .	.13
County . . . . .	.13
Assessed Value of Property - 1969 . . . . .	.13
Local General Property Tax Rates Per \$100 of	
Assessed Valuation - 1969. . . . .	.13
Planning and Zoning . . . . .	.15
Safety . . . . .	.15
Police. . . . .	.15
Fire . . . . .	.15
Rescue Service. . . . .	.15
Sanitation. . . . .	.15
HEALTH . . . . .	.17
Hospitals . . . . .	.17
Nursing Homes . . . . .	.17
Public Health . . . . .	.17
OTHER LOCAL FACILITIES . . . . .	.18
Communications . . . . .	.18
Library Services . . . . .	.18
Religious Institutions. . . . .	.18
Financial Institutions. . . . .	.18
Hotels and Motels . . . . .	.20
Clubs and Organizations . . . . .	.20
RECREATION . . . . .	.22
Local. . . . .	.22
Area . . . . .	.22
AGRICULTURE - NATURAL RESOURCES - CLIMATE . . . . .	.24
Agriculture . . . . .	.24
Natural Resources . . . . .	.24
Climate. . . . .	.24
HISTORY . . . . .	.25



## LYON COUNTY LABOR MARKET AREA

\*Shaded area denotes labor market area





## LYON COUNTY, KENTUCKY - A RESOURCE PROFILE

### Location

Lyon County, located in western Kentucky, has an estimated population of 5,700. Much of the county lies within the beautiful Land Between the Lakes National Recreation Area. The county is bounded on the west by Kentucky Lake, on the south by Trigg County, on the east by Caldwell County, and on the north by Crittenden and Livingston Counties.

### The Economic Framework

Total employment in Lyon County averaged 1,500 in 1968. Some 400 people were government employees, while agriculture provided another 365 jobs.

Per capita income in the county in 1968 was \$1,372. This figure was well below the Kentucky average, indicating a real potential for economic growth.

Total employment in the Lyon County labor market area, which included Lyon and its five surrounding counties, in 1968 was nearly 22,700, with over 6,000 jobs being provided by manufacturing. Area industrial employment has increased by over 100 percent since 1959 with the sharpest gain in the machinery and metal products industry.

Despite these important industrial gains, the area still has a deficit of 337 manufacturing jobs when measured against the national industrial employment-population ratio.

### Resources For Growth

1. There is a current estimated labor supply of 2,500 men and 2,800 women available for industrial jobs in the labor market area. In addition, 3,000 young men and 2,800 young women will become 18 years of age by 1976 and potentially available for work.

2. The local transportation capability is good. Water transportation is on the Cumberland River and the Tennessee River, with Barkley canal serving as a connecting link between the two rivers. Proposed Interstate 24 and Western Kentucky Parkway, when completed, will provide the county with excellent highway transportation. Commercial air service is available at Paducah, Kentucky, 36 miles distant.



3. Energy - both gas and electricity - is available in large quantity. The local water supply from Lake Barkley is more than adequate for continued growth.

4. Industrial sites - Lyon County has eleven available industrial sites.

5. Lyon County is within easy commuting distance of excellent vocational schools, Murray State University, and community colleges located at Madisonville, Paducah and Hopkinsville.

#### Community Programs for Improvement

The construction of Barkley Dam necessitated the relocation of both Eddyville and Kuttawa. Though both communities have such new and modern facilities, they are still seeking additional ways to increase and improve facilities and services for their citizens. Recently completed are two new housing projects, a 50-unit, low-rent project and 50 units of housing for the elderly. Also recently constructed is a new office for the Lyon County Board of Education and a new Lyon County public library with expanded facilities and volumes. The City of Eddyville is planning to construct a city park to be opened in the Fall of 1970. The park will include a swimming pool, tennis courts, playground facilities and bath facilities. Also in the planning stages are Interstate 24 and the completion of Western Kentucky Parkway, both of which will bisect Lyon County and connect it to the state's major highway network.

#### Recreation, Entertainment and Livability

Much of Lyon County is located in the "Land Between the Lakes," one of the state's most beautiful recreation areas. This national recreation area provides numerous picnic and camping facilities, water sports, and excellent fishing. In addition, Lyon County is within 25 miles of four state parks, including the new Lake Barkley State Park presently under construction. Eddyville, the county seat, is 36 miles from Paducah and 115 miles from Nashville, Tennessee, where the advantages of a metropolitan atmosphere may be enjoyed. Collegiate and varsity athletics are available at Murray State University and the three nearby community colleges.



# THE LABOR MARKET

## POPULATION TRENDS <sup>1/</sup>

	Population			Percent Change	
	1969 (Est.)	1960	1950	1960-69	1950-60
Eddyville		1,858	1,840		+ 1.0
Kuttawa		630	784		-19.6
Lyon County	5,700	5,924	6,853	- 3.8	-13.6
Labor Market Area	65,000	60,280	61,124	+ 7.8	- 1.4
Caldwell County	13,500	13,073	13,199	+ 3.3	- 1.0
Crittenden County	7,900	8,648	10,818	- 8.6	-20.1
Livingston County	7,200	7,029	7,184	+ 2.4	- 2.2
Marshall County	21,700	16,736	13,387	+29.7	+25.0
Trigg County	9,000	8,870	9,683	+ 1.5	- 8.4

## GENERAL EMPLOYMENT CHARACTERISTICS, 1968 <sup>2/</sup>

Major Employment Group	Employment	
	Lyon County	Labor Market Area
TOTAL	1,500	22,665
Agricultural	365	3,590
Nonagricultural	1,135	19,075
Manufacturing	15	6,098
Trade and Services	140	2,937
Government	402	3,256
Other	578	6,784

## MANUFACTURING EMPLOYMENT TRENDS BY INDUSTRY SEPTEMBER 1959 AND 1968 <sup>3/</sup>

Industry	Lyon County			Labor Market Area		
	1968	1959	% Change	1968	1959	% Change
TOTAL	15	61	-75.4	6,098	2,889	+111.1
Apparel, textiles, leather	0	15	--	665	598	+ 11.2
Lumber & furniture	0	34	--	265	335	- 20.9
Printing, publishing, paper	0	2	--	200	149	+ 34.2
Chemicals, petroleum, coal, rubber	7	5	+40.0	2,321	1,373	+ 69.0
Stone, clay & glass	8	5	+60.0	62	67	- 7.5
Primary metals	0	0	--	422	287	+ 47.0
Machinery & metal products	0	0	--	2,128	5	+424.6
Other	0	0	--	35	75	- 53.3



LYON COUNTY MANUFACTURING FIRMS,  
THEIR PRODUCTS AND EMPLOYMENT <sup>4/</sup>

Firm	Product	Employment		
		Total	Male	Female
<u>Eddyville</u>				
Dunbar & Sullivan Dredging Co.	Barge repair	18	17	1
<u>Kuttawa</u>				
Barkley Terminal, Inc.	Asphalt	7	6	1
Emulsified Asphalt Co.	Emulsified asphalt	5	5	0
West Kentucky Concrete	Ready mixed concrete	5	5	0

WAGE RATES FOR SELECTED OCCUPATIONS  
EDDYVILLE, KENTUCKY <sup>5/</sup>

Classification	Wages Per Hour		
	Starting	Maximum	Prevailing
<u>Service Employees</u>			
Electrician (Class-A)	\$3.50	\$5.50	\$3.50
Laborer	1.60	2.30	1.75
Mechanic, Maintenance	2.40	3.20	2.89
Truck Driver, Industrial (Class-A)	1.60	2.40	2.10
<u>Office Employees</u>			
Bookkeeper	\$1.80	\$2.12	\$1.88
Receptionist	1.60	1.80	1.60
Secretary		1.65	
Typist	1.60	2.00	1.70

LABOR ORGANIZATIONS

<u>Union</u>	<u>Representing Workers at:</u>
International Brotherhood of Teamsters, Chauffeurs, Warehousemen, and Helpers of America	Barkley Terminal, Inc.



CURRENT AND FUTURE LABOR SUPPLY -  
LYON COUNTY LABOR MARKET AREA

County	1969 Current Labor Supply <sup>6/</sup>			Future Labor Supply by 1976 (Becoming 18 Years of Age) <sup>7/</sup>		
	Total	Male	Female	Total	Male	Female
Labor Market Area						
Lyon	5,321	2,523	2,798	5,812	2,977	2,835
Caldwell	669	379	290	421	219	202
Crittenden	533	239	294	1,185	610	575
Livingston	867	388	479	814	435	379
Marshall	767	280	487	667	344	323
Trigg	1,512	911	901	1,862	947	915
	673	326	347	863	422	441

TOTAL PERSONAL INCOME <sup>8/</sup>

Area	1968	1959	% Change
Lyon County	7,823,000	5,266,000	+ 48.6
Labor Market Area	161,206,000	79,629,000	+102.4
Kentucky	8,360,000,000	4,655,000,000	+ 79.6

PER CAPITA PERSONAL INCOME <sup>9/</sup>

Area	1968	1959	% Change
Lyon County	\$1,372	\$ 918	+49.5
Labor Market Area	\$1,372 to 3,636	\$863 to 2,171	+59.0 to +67.5
Kentucky	2,614	1,552	+68.4



## EDUCATION

### Public Schools

	<u>Lyon County</u>
Total Enrollment	917
Elementary	654
High School	263
Student-Teacher Ratio	21-1
Elementary	24-1
High School	16-1
State Rating of High School	Provisional
Percent High School Graduates to College	54.2
Current Expenditures Per Pupil	\$475.77
Bonded Indebtedness, November 1, 1969	\$424,000

### Vocational Schools

	<u>Nearest Area School</u>	<u>Nearest Area School</u>
	Madisonville Area Vocational School	Tilghman Area Vocational- Technical School
Location:	Madisonville	Paducah
Miles Distant	39	36
Curriculum	Practical Nursing Surgical Technician Electronics (Industrial) Distributive Education Auto Body Repair Auto Mechanics Carpentry Drafting Electricity Machine Shop	Nurses Aide Practical Nursing Surgical Technician Ward Clerk Electronics (Technology) Highway Technology Air Conditioning and Refrigeration Appliance Repair Auto Body Repair Auto Mechanics Carpentry Cosmetology Drafting Electricity Machine Shop Small Engine Repair Welding



## Vocational Schools (Cont'd)

	<u>Nearest Area School</u>	<u>Nearest Extension Center</u>
	West Kentucky Area Vocational School	Christian County Extension Center
Location	Paducah	Hopkinsville
Miles Distant	36	39
Curriculum	General Clerical Secretarial-Steno Electronics (Communications) Auto Body Repair Auto Mechanics Barbering Carpentry Commercial Foods Cosmetology Drafting Electricity Groundskeeping and Landscaping Masonry Tailoring	Appliance Repair Auto Mechanics Carpentry Drafting Electricity Welding

## Colleges and Universities

<u>Name</u>	<u>Area - Within 50 miles</u>		<u>Highest Degree Conferred</u>
	<u>Location</u>	<u>Enrollment</u>	
Murray State University	Murray	7,334	Masters
Madisonville Community College	Madisonville	203	Associate
Paducah Community College	Paducah	1,051	Associate
Hopkinsville Community College	Hopkinsville	451	Associate



## TRANSPORTATION

### Rail

Lines Serving - Illinois Central Railroad depot at Grand Rivers - an 18-car unloading track is in operation at Fairview in Lyon County.

Services - Freight, sidings

### RAILWAY TRANSIT TIME FROM EDDYVILLE, KENTUCKY, TO: <sup>10/</sup>

No. of Days		No. of Days	
City	CL	City	CL
Atlanta, Ga.	4	Los Angeles, Calif.	6
Birmingham, Ala.	3	Louisville, Ky.	2
Chicago, Ill.	3	Nashville, Tenn.	2
Cincinnati, Ohio	4	New Orleans, La.	3
Cleveland, Ohio	5	New York, N. Y.	5
Detroit, Mich.	5	Pittsburgh, Pa.	4
Knoxville, Tenn.	4	St. Louis, Mo.	3

### Truck Service

#### Company

Harper Truck Service, Inc.  
 Illinois Central Railroad Co.  
 (Illinois Central Railroad  
 freight only)  
 Arnold Ligon Truck Line, Inc.  
 (Ellis Trucking)  
 McLean Trucking Co.

#### Home Office

Paducah, Kentucky  
  
  
  
  
 Indianapolis, Indiana  
 Winston-Salem, North Carolina

# HIGHWAY MILES AND TRUCK TRANSIT TIME IN DAYS FROM EDDYVILLE, KENTUCKY, TO SELECTED MARKET CENTERS

City	Highway Miles	Delivery Time <u>11/</u>		City	Highway Miles	Delivery Time	
		LTL	TL			LTL	TL
Atlanta, Ga.	367	2-3	1-2	Los Angeles, Calif.	2,072	7-9	4-6
Birmingham, Ala.	302	2-3	1	Louisville, Ky.	185	1	1
Chicago, Ill.	441	2-3	1	Nashville, Tenn.	115	1-2	1
Cincinnati, Ohio	316	1-2	1	New Orleans, La.	718	3-4	2
Cleveland, Ohio	564	2-3	1-2	New York, N. Y.	994	3-4	2-3
Detroit, Mich.	585	2-3	1-2	Pittsburgh, Pa.	616	2-4	1-2
Knoxville, Tenn.	300	2-3	1-2	St. Louis, Mo.	221	1-2	1

## Air

	<u>Local</u>	<u>Local</u>
	Princeton-Caldwell County Airport	Kentucky Dam State Park Airport
Location:	1 mile northeast of Princeton	1 mile northwest of Kentucky Dam
Runways:	1 paved	2
Length:	3,000 feet	4,000 feet (paved), 2,900 feet (turf)
Traffic		
Control:	Wind tee	Wind tee
Lighting:	None	Runway lights, sundown to sunrise, obstructions
Services:		80 and 100 octane, jet fuel, tie down, charter service and car rental, flight instruction, A & E repairs

## Nearest Commercial

	Barkley Field
Location:	8 miles west of Paducah
Runways:	2 paved
Length:	6,500 feet, 4,000 feet
Traffic	
Control:	Wind tee
Lighting:	Beacon, boundary, obstruction, runway lights and runway and identification lights
Services:	80 and 100 octane; jet fuel; Delta, Ozark, Sun, Desota Airlines; taxi; limousine; U-Drive-It; storage; major A & E repairs

## Bus

Kentucky Bus Lines



## POWER AND FUEL

### Electricity

Company serving Eddyville, Kuttawa, east and central Lyon County -  
Kentucky Utilities Company  
Source of power - Kentucky Utilities Company  
Total generating capacity - 740,000 KW  
Industrial rates negotiated by - Kentucky Utilities Company, Lexington,  
Kentucky

Company serving southern Lyon County - Pennyriple RECC  
Source of power - Tennessee Valley Authority  
Total generating capacity - 18,202,090 KW  
Industrial rates negotiated by - Pennyriple RECC, Hopkinsville, Kentucky

Company serving western and northern Lyon County - Henderson-Union RECC  
Source of power - Big Rivers RECC  
Total generating capacity - 240,000 KW  
Industrial rates negotiated by - Henderson-Union RECC, Henderson,  
Kentucky

### Natural Gas

Company serving Eddyville - Western Kentucky Gas Company  
Source of supply - Texas Gas Transmission Corporation  
Size of transmission lines - 3-inch  
Distribution lines - 2 and 3 inches  
BTU content - 1,000; Specific gravity - .60  
Distribution pressure - 10 to 60 psi (variable as needed)  
Peak demand at 0° F. - 534,000 cu. ft.  
Rates - Will be furnished by Western Kentucky Gas Company, Owensboro,  
Kentucky.

Company serving Kuttawa - Kuttawa Natural Gas System  
Source of supply - Texas Gas Transmission Corporation  
Size of transmission lines - 6-inch; Distribution lines - 2 and 4 inches  
BTU content - 1,000; Specific gravity - .60  
Distribution pressure - 16 to 160 psi (variable as needed)

Rates:	First	1,000 cu. ft. or less per month	\$1.30 (Minimum)
	Next	2,000 cu. ft. used per month	.90 per M cu. ft.
	Next	7,000 cu. ft. used per month	.73 per M cu. ft.
	Next	40,000 cu. ft. used per month	.67 per M cu. ft.
	All additional	cu. ft. used per month	.60 per M cu. ft.

Industrial rates negotiated

## WATER AND SEWERAGE

### Water

Company serving Eddyville - Eddyville Water Works  
Source - Lake Barkley  
Treatment plant capacity - 351,000 gpd  
Average daily consumption - 115,000 gallons  
Peak daily consumption - 180,000 gallons  
Type treatment - settling, filtering, chlorination  
Storage capacity - 300,000 gallons; Average pressure - 85 psi  
Average temperature - 52 degrees  
Size mains - 6 and 8 inches

#### MONTHLY WATER RATES FOR WHOLESALE AND INDUSTRIAL CONSUMERS

---

0 to	2,000 gals.	\$3.50 (minimum)
2,000 to	5,000 gals.	.80 per M gals.
5,000 to	10,000 gals.	.70 per M gals.
10,000 to	30,000 gals.	.60 per M gals.
30,000 to	50,000 gals.	.50 per M gals.
50,000 to	100,000 gals.	.40 per M gals.
Over	100,000 gals.	.30 per M gals.

An additional charge of \$1.50 per month will be made to customers outside of city limits.

Company serving Kuttawa - Kuttawa Water and Sewer Department  
Source - Lake Barkley  
Treatment plant capacity - 864,000 gpd  
Average daily consumption - 70,000 gallons  
Type treatment - sedimentation, filtration, chlorination  
Storage capacity - 600,000 gallons; Average pressure - 65 to 90 psi  
Average temperature - 52 degrees  
Size mains - 6 and 12 inches

#### MONTHLY WATER RATES FOR WHOLESALE AND INDUSTRIAL CONSUMERS

---

First	1,000 gals.	\$3.20 (minimum)
Next	4,000 gals.	1.10 per M gals.
Next	5,000 gals.	1.00 per M gals.
Next	5,000 gals.	.90 per M gals.
Next	5,000 gals.	.80 per M gals.
Next	5,000 gals.	.70 per M gals.
Over	25,000 gals.	.60 per M gals.



Surface water sources - Cumberland River and Lake Barkley  
Average discharge - Cumberland River 27,500 cfs (USGS)  
Expected ground water yield - northern and southern portions 50-200 gpm,  
central 5-50 gpm  
Yield along main streams - 50-200 gpm

#### Sewerage

Company serving Eddyville - municipal  
Design capacity - 130,000 gpd  
Average daily flow - 50,000 gallons  
Treatment - primary and secondary  
Treated effluent discharged into - nearby stream  
Rates - 50 percent of water bill

Company serving Kuttawa - municipal  
Design capacity - 720,000 gpd  
Average daily flow - 63,000 gallons  
Treatment - primary and secondary  
Treated effluent discharged into - nearby stream (tributary of Poplar  
Creek)  
Size of sanitary mains - 8 and 12 inches  
Size of storm mains - 56 inches  
Rates - 50 percent of water bill

## LOCAL GOVERNMENT

### City

Structure - Mayor, Eddyville - 4-year term; 6 councilmen - 2-year terms  
Mayor, Kuttawa - 4-year term; 6 councilmen - 2-year terms

Budget 1969-70 - Eddyville - General Fund \$18,079; Water and Sewer  
Fund - \$40,591

Kuttawa - General Fund \$10,000; Water and Sewer  
Fund - \$26,500; Gas Fund - \$87,500

Fees and licenses - Eddyville - \$10-\$12.50 annually

### County

Structure - County Judge - 4-year term; 3 magistrates - 4-year terms

Budget 1969-70 - General Fund \$64,971; Road Fund \$36,250

### Assessed Value of Property - 1969

<u>Classes of Property*</u>	<u>Lyon County</u>
Real Estate	\$25,551,863
Tangibles	3,014,317
Public Service	7,612,014

### Local General Property Tax Rates Per \$100 of Assessed Valuation - 1969 <sup>12/</sup>

<u>Taxing Unit**</u>	<u>Eddyville</u>	<u>Kuttawa</u>	<u>Lyon County</u>
State	\$ .015	\$ .015	\$ .015
County	.157	.157	.157
School	.403	.403	.403
City	.210	.210	
Total	\$ .785	\$ .785	\$ .575

\*Property assessed at 100 percent of fair value.

\*\*Manufacturing machinery, raw materials inventories and goods in process inventories are not subject to local tax. State rate is only \$ .15 per \$100.





EDDYVILLE CITY HALL



KUTTAWA CITY HALL

## Planning and Zoning

Agency - Eddyville Planning Commission

Plans completed - Housing conditions survey, housing elements study,  
comprehensive plan

Codes adopted - Housing and Building

## Safety

<u>Police</u>	<u>Eddyville</u>	<u>Kuttawa</u>	<u>Lyon County</u>
Total staff	1	0	3
Radio-patrol cars	1	0	2

### Fire

American Insurance Associ-

ation Fire Rating

8

Volunteers

22

Equipment:

750 gpm pumpers

1

500 gpm pumpers

1

### Rescue Service

Lyon County Rescue Squad:

Number of volunteers - 18

Equipment - boat, dragging equipment, oxygen equipment

Personnel training - first aid

## Sanitation

	<u>Eddyville</u>	<u>Kuttawa</u>
Type service	private contractor	private contractor
Cost	residential - \$2 per month business - \$2.50 weekly	residential - \$3 per month varies according to volume collected
Collection frequency	residential-weekly business-twice weekly	residential-weekly business-weekly
Trash pickup	weekly	weekly
Disposal method	county land fill	county land fill





LYON COUNTY COURTHOUSE



LYON COUNTY LIBRARY

## HEALTH

### Hospitals

	<u>Location</u>	<u>Beds</u>
General hospital Caldwell County Memorial Hospital	Princeton	85

General hospital facilities - 2 operating rooms, diagnostic X-ray, clinical laboratory including basal metabolism and electrocardiograph, emergency room, drug room, complete obstetrical facilities, dietary services, and outpatient facilities

Medical staff - 6 doctors, 12 registered nurses, 18 graduate licensed practical nurses, 1 radiologist, 2 courtesy doctors, 1 pathologist, 1 chest specialist

Additional medical facilities are located in Paducah, 36 miles distant.

### Nursing Homes

	<u>Number</u>	<u>Beds</u>
Personal care home	1	64

### Public Health

Facility - Lyon County Health Department

Staff - Administrator, sanitarian (part-time), clinician (when needed), registered nurse, clerk, nutritionist (part-time)

Budget 1969-70 - \$26,064



## OTHER LOCAL FACILITIES

### Communications

Telephone - South Central Bell Telephone Company  
Services - standard, direct dialing

Postal -	<u>Eddyville</u>	<u>Kuttawa</u>
	Class 2 U.S. Post Office	Class 3 U.S. Post Office
Mail received -	twice daily	twice daily
Mail dispatched -	twice daily	twice daily
Newspaper weekly -	Herald Ledger	
Circulation -	2,500	

Radio -  
Stations received from - Princeton, Benton, Paducah, and Cadiz

Television -  
Reception from - Paducah; Cape Girardeau, Missouri; Harrisburg, Illinois  
Kentucky Educational Television - Channel 35, Madisonville;  
Channel 21, Murray

### Library Services

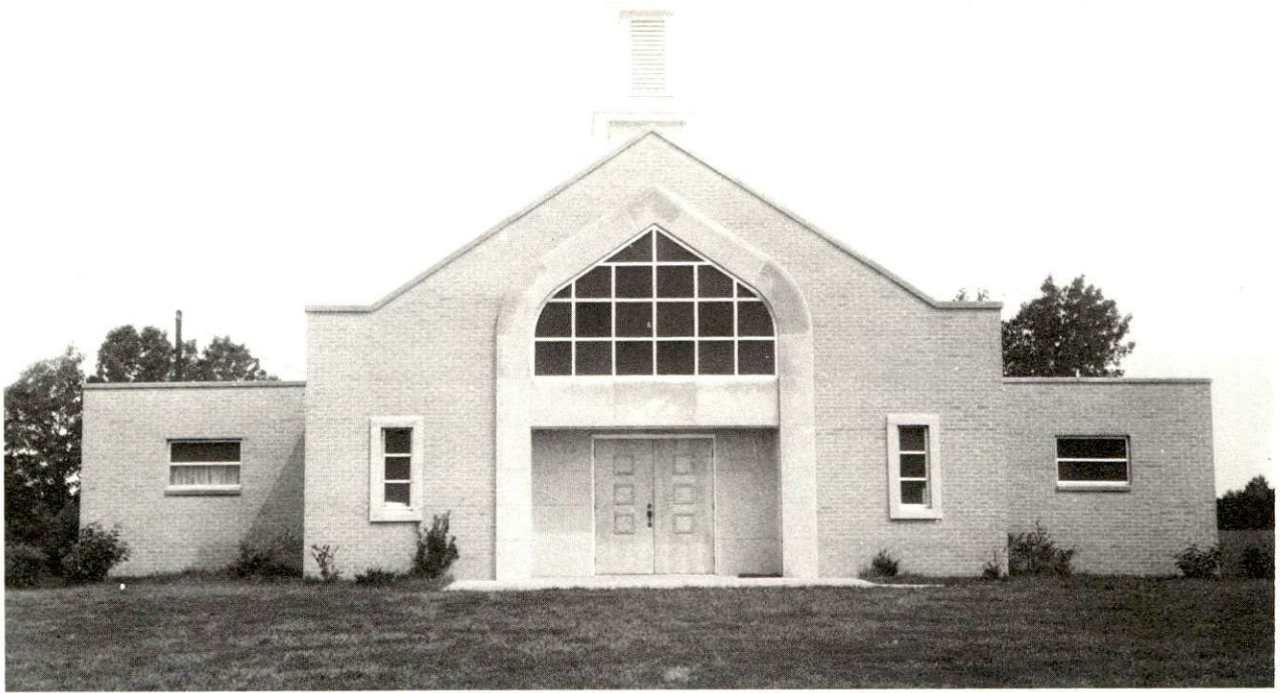
Public libraries - Lyon County Library  
Size collection - 10,413 volumes  
Circulation, 1968 - 44,926  
Services - magazine circulation, film strip slides, microfilms, phonograph records, bookmobile

### Religious Institutions

Number of churches - 21  
Denominations - Church of Christ, Methodist, Baptist

### Financial Institutions

<u>Bank</u>	<u>Statement as of June 30, 1969</u>	
	<u>Assets</u>	<u>Deposits</u>
Citizens State Bank of Lyon County	\$6,237,292.19	\$5,557,508.95



EDDYVILLE BAPTIST CHURCH



KUTTAWA UNITED METHODIST CHURCH



### Hotels and Motels

<u>Number</u>	<u>Units</u>
4	62

### Clubs and Organizations

Business and Civic - Kuttawa Rotary Club, Lyon County Lions Club,  
K.E.L.L. Chamber of Commerce, Civil Defense, Eddyville  
Professional and Business Club, Inc., Kuttawa Jaycees

Fraternal - Masonic Lodge of Eddyville, Masonic Lodge of Kuttawa

Women's - Kuttawa Woman's Civic Club, Eddyville Woman's Club,  
Homemakers

Youth - Boy Scouts, Girl Scouts, FFA, FHA, 4-H Club

Other - Farm Bureau, Woodmen of the World, Lake Barkley Riding Club



EDDYVILLE POST OFFICE



KUTTAWA POST OFFICE



## RECREATION

### Local

#### Public Recreation Facilities

Playgrounds - 2

Baseball diamonds - 2

#### Private Recreation Facilities

Bowling lanes - 1

#### Tourist Attractions

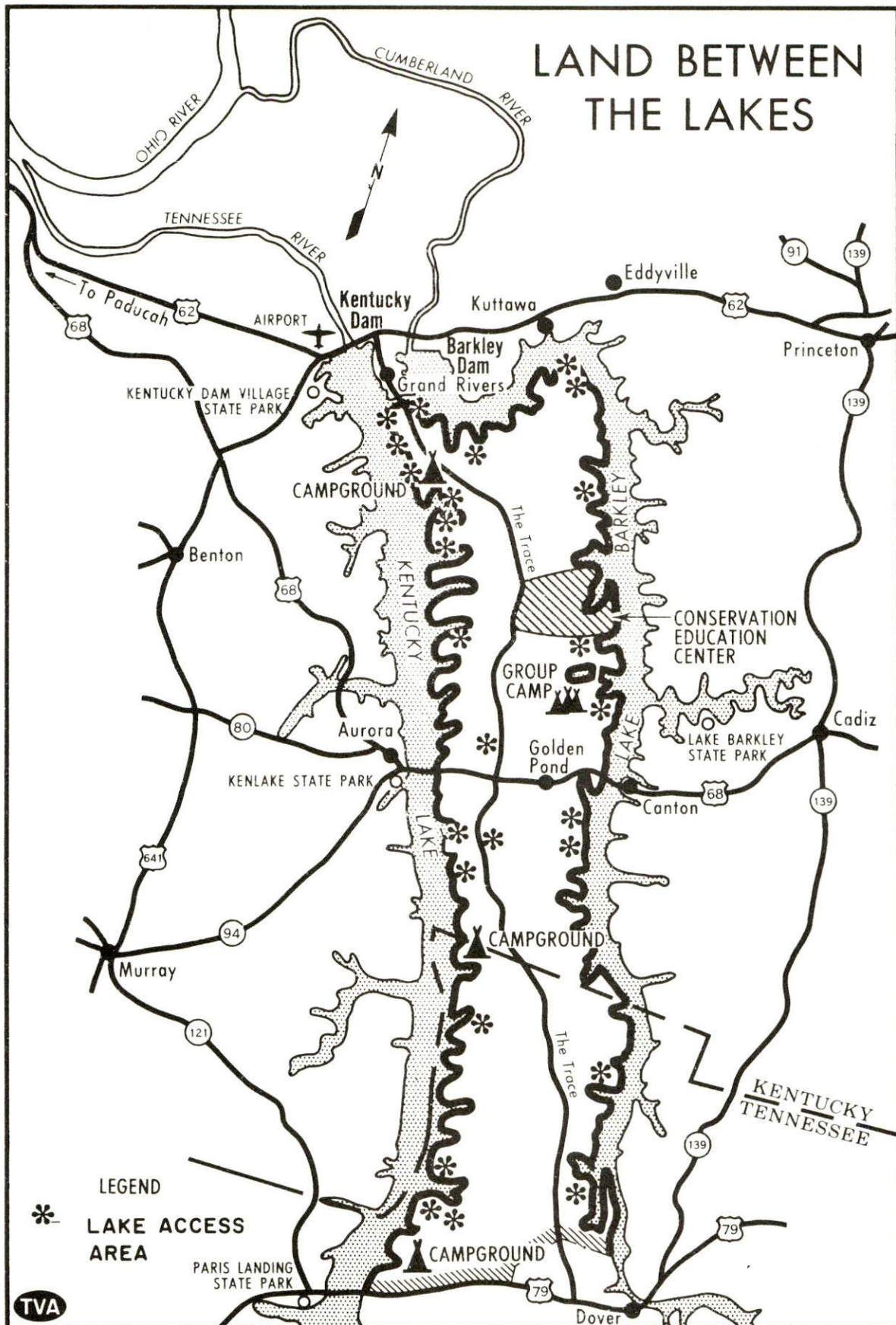
Land Between the Lakes National Recreation Area

### Area (Within 25 miles)

State Parks - Kentucky Dam Village, Lake Barkley State Park,  
Pennyrile State Park, Kenlake State Park

Cultural Events - Outdoor drama during the summer months at Kenlake  
State Park

# LAND BETWEEN THE LAKES





# AGRICULTURE - NATURAL RESOURCES - CLIMATE

## Agriculture 13/

	<u>Lyon County</u>	<u>Labor Market Area</u>
Total land area (acres)	161,920	1,311,360
Percent of area in farm land	38.8	58.1
Number of farms	398	4,446
Average size of farms (acres)	157.7	171.3
1964 value of all farm products	\$1,665,081	\$18,093,937
Value per farm	\$ 4,184	\$ 4,070
Total crop sales	\$ 610,609	\$ 5,869,639
Total livestock & livestock products	\$1,054,472	\$12,219,700
1967 agricultural production included:		
Burley tobacco (lbs.)	325,000	13,868,000
Corn (bu.)	390,000	4,844,000
Cattle and calves (number)	9,300	131,000
Hogs and pigs (number)	9,200	101,500
Milk production, 1966 (lbs.)	3,330,000	33,190,000

## Natural Resources

Principal mineral resources	sand and gravel
Other mineral resources	small amounts of vein minerals and silica sand
Acres of commercial forest land	80,600
Most abundant tree species	red oaks, white oaks, hickories, hard and soft maples

## Climate 14/

	<u>Lyon County</u>
Temperature	
Annual mean	60.0 degrees (30-year record)
Average annual 1968	57.3 degrees
Record highest, July 1966	103.0 degrees (3-year record)
Record lowest, January 1966	- 6.0 degrees (3-year record)
Seasonal heating degree-days	3,578 (30-year record)
Precipitation	
Mean annual total	45.14 inches (30-year record)
Mean annual snow and sleet	11.30 inches (27-year record)
Total precipitation 1968	43.93 inches
Mean number days precipitation (.01 inch or more)	117 (27-year record)
Average number days thunderstorms	56 (27-year record)
Prevailing winds	south

## HISTORY

Lyon County was established in 1854 as the one-hundredth and second Kentucky county. It was named for Colonel Crittenden Lyon who served in the state legislature from Caldwell County from 1822 to 1824, and in Congress for the next eight years.

Lyon County contains large iron ore deposits, and in the late 1850's the Elizabethtown and Paducah Railroad opened them to domestic and international commerce. Because of the long, tedious routes to manufacturing centers, there never was a widespread interest in their development. Other deposits of iron ore, chiefly in Minnesota, were opened in the 1880's which proved fatal to Kentucky's chances to become an iron ore producing center.

The Eighty-Third Congress in 1954 authorized the construction of the Barkley Dam. It created a lake some 118 miles long which caused the relocation of two towns in Lyon County, including her county seat. It also flooded some 62,000 acres of her land. The dam was built to help harness the meandering and often turbulent Cumberland River, improve navigation, produce electric power and open a vast new field of recreation and tourist business in the state. Barkley Dam and the one at Jamestown several miles upstream are the first of several slated to be built in the Cumberland valley. Barkley Dam is the largest on the Cumberland River; however, it is smaller than its companion Kentucky Dam across the Tennessee River. The creation of Lake Barkley, however, necessitated the complete relocation of Eddyville, the county seat, and only the State Penitentiary was not moved. Its elevated site was not touched by the backwater of Barkley Dam, and the institution now occupies a man-made peninsula.

Eddyville, the county seat, was settled in 1799 by Matthew Lyon and was incorporated in 1810. It was named for the eddies in the Cumberland River above and below its site. It became the county seat of Caldwell County when that county was formed in 1809. Later the seat of government was moved to Centerville, once again back to Eddyville, then finally to Princeton. When Lyon County was established, Eddyville became its permanent county seat.

It was at Eddyville that Colonel Matthew Lyon built several hulls of warships for the United States government in 1811-1812. Its companion town, Kuttawa, only two miles distant while they were located on the river, and now less far apart, was the home of William Kelly who discovered the air-boiling process, later known as the Bessemer process of making steel. Kelly's long struggle to obtain a patent for his discovery, after Bessemer had first obtained one, was as tense and bitter as any related in our history. It was unfortunate that he lost it through negligence within a few years and now only Bessemer's name is identified with the process.



## SOURCES OF INFORMATION

- 1/ U. S. Department of Commerce, Bureau of the Census, Census of Population, 1950, 1960. Department of Rural Sociology, University of Kentucky, Kentucky County Provisional Population Estimates: January 1, 1969.
- 2/ Kentucky Department of Economic Security, Division of Research and Statistics.
- 3/ Kentucky Department of Economic Security, Number of Workers in Manufacturing Industries Covered by Unemployment Insurance Law Classified by Industry and County, September 1959, September 1968.
- 4/ Kentucky Department of Commerce, 1970 Kentucky Directory of Manufacturers.
- 5/ Kentucky Department of Economic Security, Division of Employment Service, Hopkinsville Office.
- 6/ Kentucky Department of Economic Security, Kentucky Labor Supply Estimates by County, January 1969.
- 7/ Kentucky Department of Commerce, Future Labor Supply by 1976.
- 8/ University of Kentucky, Office of Development Services and Business Research, Total Personal Income for Kentucky.
- 9/ University of Kentucky, Office of Development Services and Business Research, Per Capita Income in Kentucky.
- 10/ Illinois Central Railroad, Louisville, Kentucky.
- 11/ McLean Trucking Service, Winston-Salem, North Carolina.
- 12/ Farmer & Humble, Certified Public Accountants, 1969 Kentucky Tax Rate Schedule.
- 13/ U. S. Department of Commerce, Bureau of the Census, Census of Agriculture, 1964. U. S. Department of Agriculture and Kentucky Department of Agriculture, Kentucky Agricultural Statistics, 1968.
- 14/ U. S. Department of Commerce, Environmental Science Services Administration, Climatological Data, 1967.

All other information was obtained from governmental offices, local businesses and organizations.