

1971

Industrial Resources: Powell County

Kentucky Library Research Collections
Western Kentucky University, spcol@wku.edu

Follow this and additional works at: https://digitalcommons.wku.edu/powell_cty

 Part of the [Business Administration, Management, and Operations Commons](#), [Growth and Development Commons](#), and the [Infrastructure Commons](#)

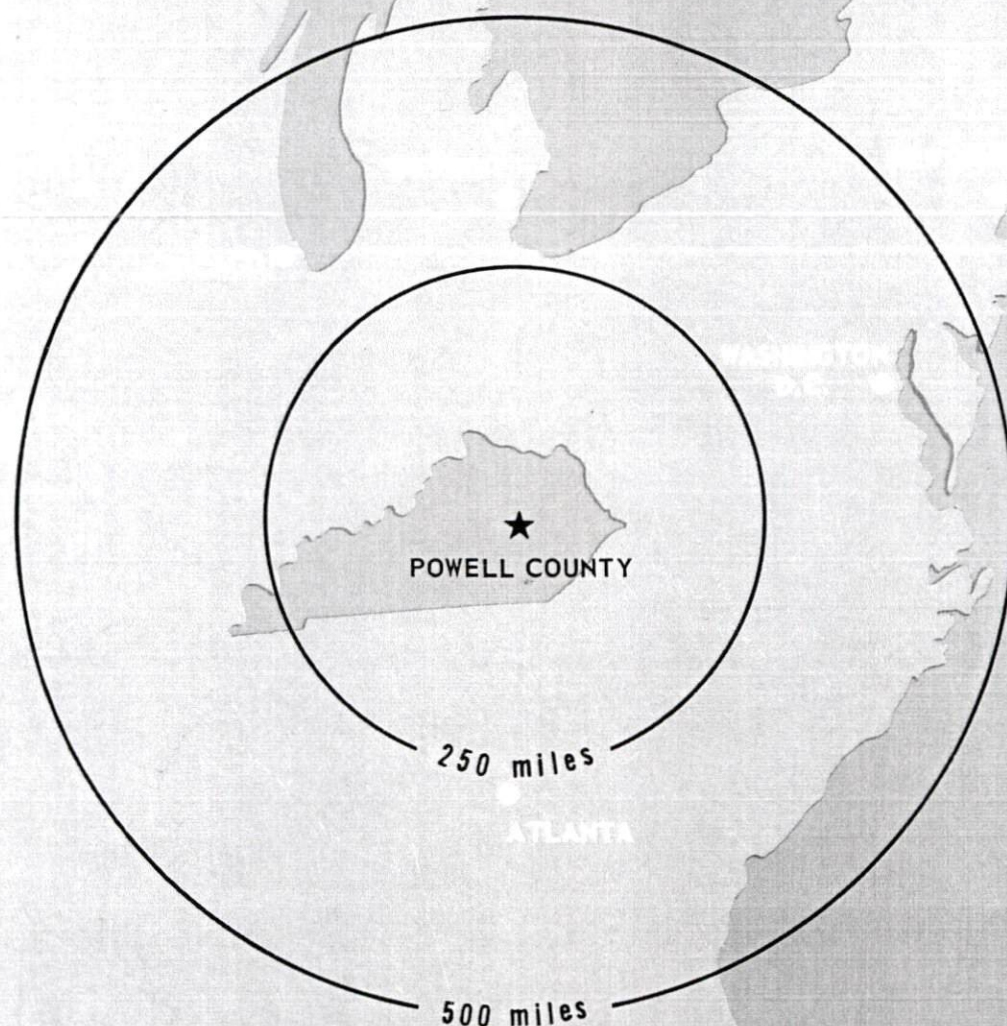
Recommended Citation

Kentucky Library Research Collections, "Industrial Resources: Powell County" (1971). *Powell County*. Paper 11.
https://digitalcommons.wku.edu/powell_cty/11

This Report is brought to you for free and open access by TopSCHOLAR®. It has been accepted for inclusion in Powell County by an authorized administrator of TopSCHOLAR®. For more information, please contact topscholar@wku.edu.

INDUSTRIAL RESOURCES

POWELL COUNTY ***KENTUCKY***



ERRATA

Industrial Resources, Powell County Kentucky, 1971, published by the Kentucky Department of Commerce in cooperation with the Powell County Industrial Development Association.

On page 12, the section on natural gas should read:

Natural Gas

Company serving Stanton - Delta Natural Gas Company

Source of supply - Kentucky Gas Transmission Corporation

Size of transmission lines - 3 1/2 inches

Distribution lines - 4-, 3-, 2-, and 1-inch

Btu content - 1037; Specific gravity - .59; Distribution pressure - 10 psi

Monthly Rates:

First	1,000 cu. ft.	\$2.50 (Minimum)
Next	1,000 cu. ft.	1.60
Next	3,000 cu. ft.	1.15 per M cu. ft.
Next	5,000 cu. ft.	1.03 per M cu. ft.
Next	10,000 cu. ft.	.96 per M cu. ft.
All over	20,000 cu. ft. used per month	.85 per M cu. ft.

Company serving Clay City - Delta Natural Gas Company

Source of supply - Kentucky Gas Transmission Corporation

Size of transmission lines - 2 3/8 inches

Distribution lines - 2-inch, 1-inch

Btu content - 1037; Specific gravity - .59; Distribution pressure - 10 psi

Monthly Rates:

First	1,000 cu. ft.	\$2.50 (Minimum)
Next	1,000 cu. ft.	1.60
Next	3,000 cu. ft.	1.15 per M cu. ft.
Next	5,000 cu. ft.	1.03 per M cu. ft.
Next	10,000 cu. ft.	.96 per M cu. ft.
All over	20,000 cu. ft. used per month	.85 per M cu. ft.

POWELL COUNTY INDUSTRIAL SITES

1971

POWELL COUNTY INDUSTRIAL SITES

For additional site information, contact James Brandenburg, Clay City, Kentucky; James Shultz, Powell County Bank, Stanton, Kentucky; or the Kentucky Department of Commerce, Frankfort, Kentucky.

SITE # 1: ACREAGE AND TOPOGRAPHY: 20 acres, level to
very gently rolling
LOCATION: Within east city limits of Stanton
HIGHWAY ACCESS: Fronts on Kentucky 15
WATER: Stanton Water Works
SIZE LINE: 10-inch line on site
GAS: Delta Natural Gas Company
SIZE MAIN: 2-inch main on site
ELECTRICITY: Clark Rural Electric Cooperative
Corporation
SEWERAGE: Stanton Sewer System; 8-inch line
is being extended to site
OWNERSHIP: Powell County Industrial Association

SITE # 2: ACREAGE AND TOPOGRAPHY: 23 acres, level
LOCATION: Within west city limits of Clay City
ZONING: Industrial
HIGHWAY ACCESS: Access road to Kentucky 15
approximately 400 feet from site
WATER: Clay City Water Works
SIZE LINE: 6-inch line 450 feet from site
GAS: Delta Natural Gas Company
SIZE MAIN: 2-inch main on site
ELECTRICITY: Clark Rural Electric Cooperative
Corporation
SEWERAGE: Clay City Sewer System
OWNERSHIP: Powell County Industrial Association

LEGEND:

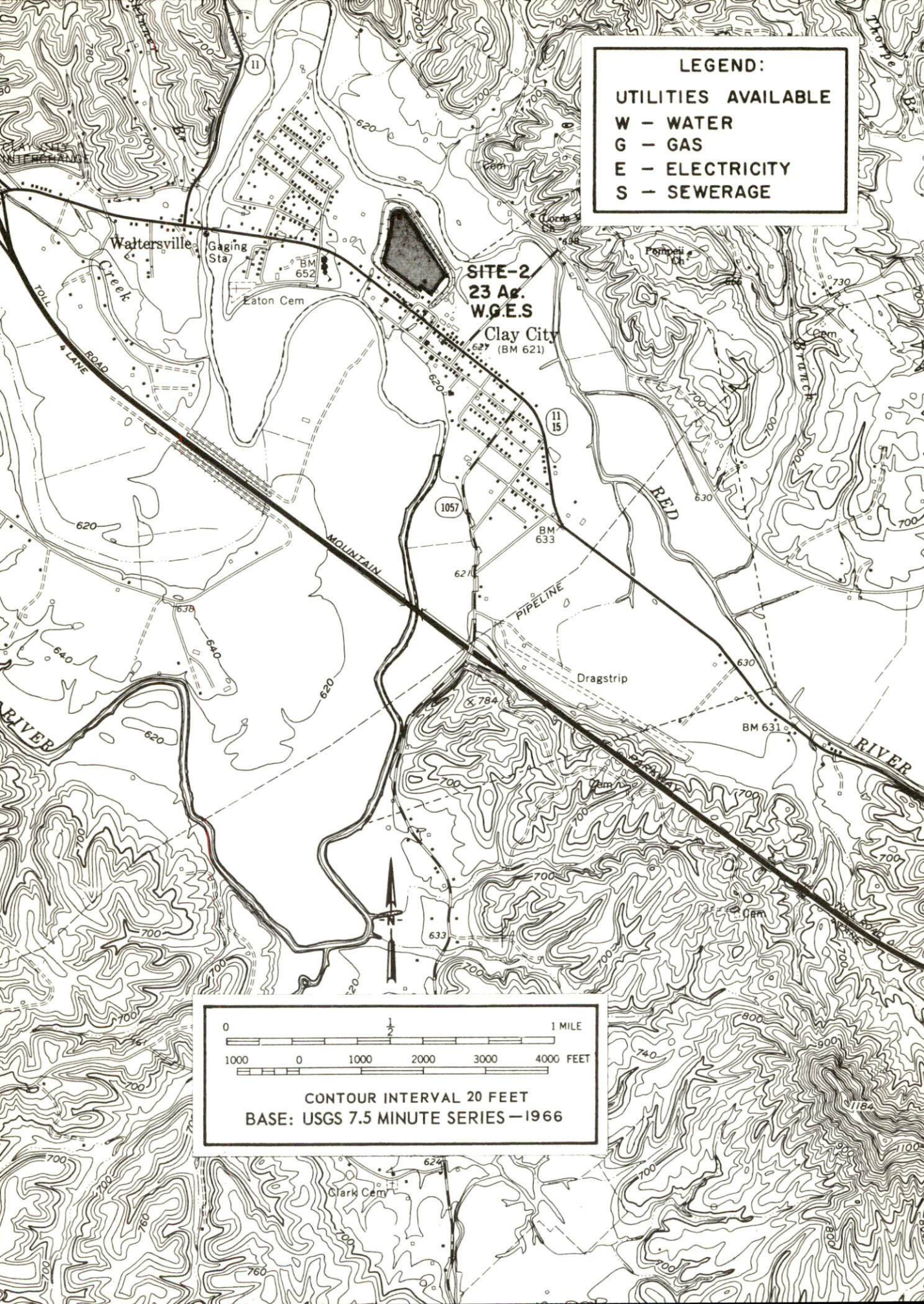
UTILITIES AVAILABLE

W - WATER

G - GAS

E - ELECTRICITY

S - SEWERAGE



CONTOUR INTERVAL 20 FEET
BASE: USGS 7.5 MINUTE SERIES - 1966

INDUSTRIAL RESOURCES
POWELL COUNTY, KENTUCKY

Prepared by
The Kentucky Department of Commerce
in cooperation with
Powell County Industrial & Development Association

1971

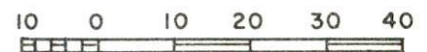
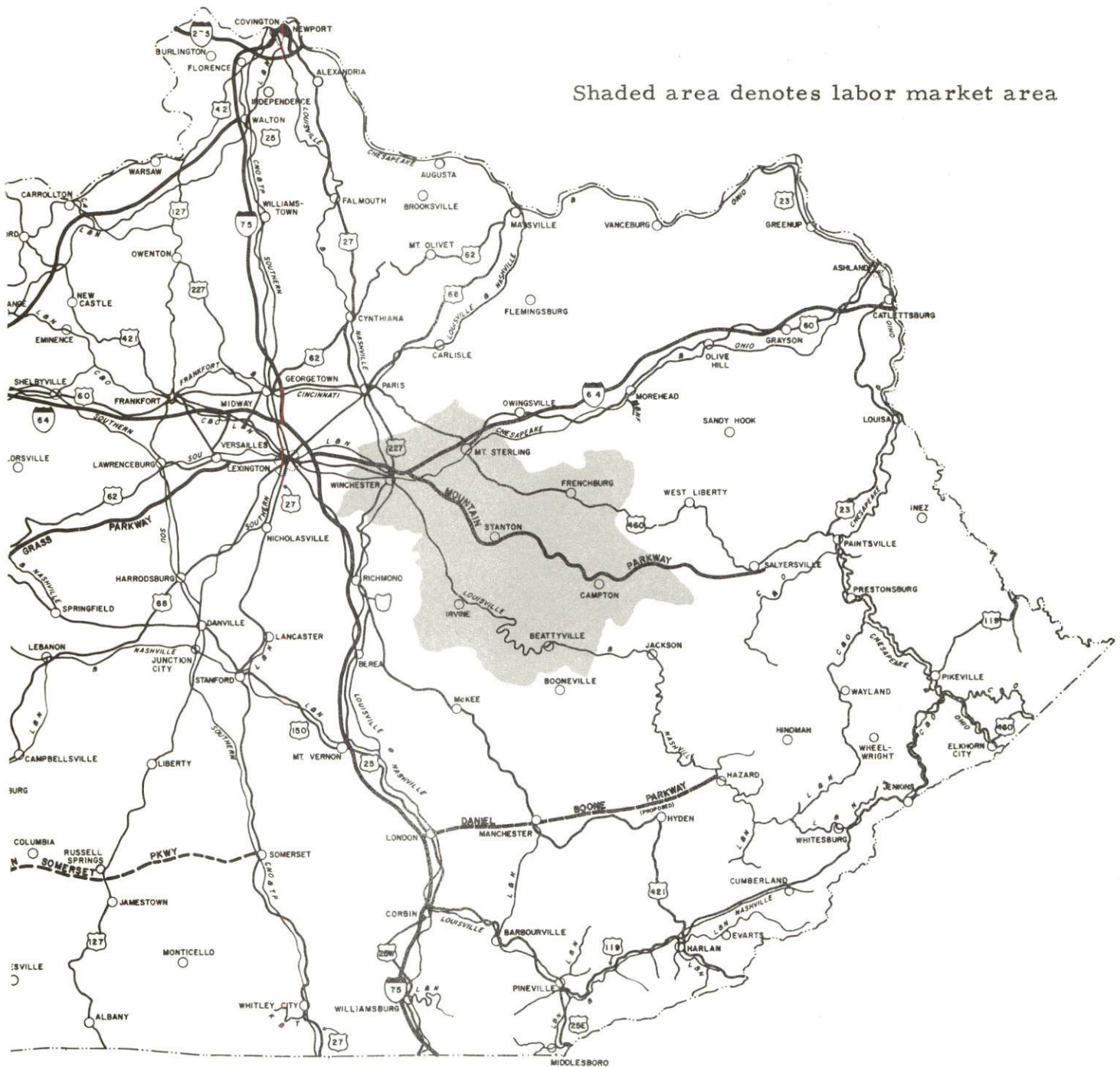
TABLE OF CONTENTS

<u>Chapter</u>	<u>Page</u>
INDUSTRIAL SITES	i
POWELL COUNTY, KENTUCKY - A RESOURCE PROFILE .	1
THE LABOR MARKET.	4
Population Trends	4
General Employment Characteristics, 1969	4
Manufacturing Employment Trends by Industry	4
Powell County Manufacturing Firms, Their Products and Employment	5
Wage Rates for Selected Occupations	5
Labor Organizations	7
Current and Future Labor Supply.	7
Total Personal Income	7
Per Capita Personal Income.	7
EDUCATION	8
Public Schools	8
Vocational Schools	8
Colleges and Universities	9
TRANSPORTATION	10
Rail.	10
Truck Service	10
Air	11
Bus	11
POWER AND FUEL	12
Electricity.	12
Natural Gas	12
WATER AND SEWERAGE	13
Water	13
Sewerage	15

<u>Chapter</u>	<u>Page</u>
LOCAL GOVERNMENT	17
City	17
County	17
Assessed Value of Property, 1970	17
Local General Property Tax Rates Per \$100 of	
Assessed Valuation, 1970	17
Planning and Zoning	18
Safety	18
Police	18
Fire	18
Rescue Service.	18
Sanitation.	18
HEALTH	19
Hospitals	19
Local Medical Personnel	19
Nursing Homes	19
Public Health	19
OTHER LOCAL FACILITIES.	20
Communications	20
Library Services	20
Religious Institutions.	22
Financial Institutions.	22
Hotels and Motels	22
Clubs and Organizations	22
RECREATION	23
Local.	23
Area	23
AGRICULTURE - NATURAL RESOURCES - CLIMATE	25
Agriculture	25
Natural Resources	25
Climate	25
HISTORY	26

POWELL COUNTY LABOR MARKET AREA

Shaded area denotes labor market area



GRAPHIC SCALE IN MILES

POWELL COUNTY, KENTUCKY - A RESOURCE PROFILE

Location

Powell County is located at the eastern edge of Kentucky's central Bluegrass Region. Stanton, the county seat, and Clay City are the largest communities in the county. Stanton is situated 35 miles southeast of Lexington, Kentucky; 110 miles southeast of Louisville, Kentucky; and 117 miles southeast of Cincinnati, Ohio.

Stanton has a 1970 population of 2,037, Clay City has a population of 983, and Powell County has a population of 7,704.

The Economic Framework

Total employment in Powell County averaged 1,500 in 1969 with manufacturing providing 300 jobs and agriculture providing 300 jobs. The major industrial product is shoes.

Per capita income in the county in 1968 was \$1,107. Between 1959 and 1968, per capita personal income in the county increased by 52 percent.

The Powell County labor market area includes Powell, Clark, Estill, Lee, Menifee, Montgomery and Wolfe Counties. Area employment totals 24,200 including 6,100 in manufacturing and 4,325 in trade and services. Agriculture employs 4,200 workers. Area manufacturing employment has increased nearly 165 percent since 1960. The sharpest industrial employment gains have been in the apparel, leather, and metal products industries.

The Powell County labor market area has a deficit of 1,292 manufacturing jobs when measured against the national industrial employment-population ratio. This indicates an area where the potential for additional manufacturing production is good.

Resources for Growth

1. There is a current estimated labor supply of 1,040 men and 275 women available for industrial jobs in the Powell County labor market area. In addition, 4,015 young men and 3,850 young women will become 18 years of age by 1976 and potentially available for work.

2. The Louisville & Nashville and the Chesapeake & Ohio railroads provide a variety of services at Winchester, which is 23 miles from Stanton and 19 miles from Clay City via the Mountain Parkway and Interstate 64.

The Powell County area has good highway access to Lexington, Cincinnati, Louisville, and other major cities via Interstates 64 and 75, and the Mountain Parkway. Another important highway serving the area is U. S. 25, running between Lexington and Knoxville, Tennessee. The Stanton Airport has 3,000 feet of paved runway for light aircraft. Commercial air service is available at Blue Grass Field, only 35 miles away in Lexington.

3. Electricity is supplied to Powell County by the Clark Rural Electric Cooperative Corporation. Its source of power is the East Kentucky Power Cooperative. Natural gas is available in Stanton and Clay City and is supplied by the Delta Natural Gas Company.

4. Powell County has two available industrial sites, with all utilities.

5. Powell County schools operate under the county school system. Educational television is available from Channel 46 in Lexington.

Four universities, three senior colleges, two junior colleges, and one community college are located within 50 miles of Stanton. The nearest area vocational school is the Central Kentucky Area Vocational School at Lexington. The Montgomery County Vocational Extension Center is 20 miles away at Mt. Sterling.

Community Programs for Improvement

Phase one of the new Powell County High School, presently under construction, contains 12 classrooms, a library, lunchroom-cafeteria, rest rooms, and a medical room. Two more phases of the building are planned. A Powell County High School band has been organized and a football team will be organized for the high school by 1972.

The City of Stanton is in the process of extending the sewerage system to the industrial site, airport, and eastern section of Stanton. The city is also planning an additional 80 units of low-rent housing.

The Clay City Water Works is adding 9 miles of main line and 250 meters. Clay City has a new sewerage system under construction which is expected to be in operation by the Spring of 1971. The design capacity of the treatment plant is 200,000 gallons per day.

Powell County is also in the process of developing a water district. It is to be called Powell's Valley Water District. It is presently 30 percent complete and operation is expected to begin after January of 1971. The

treatment plant capacity will be 300,000 gallons per day. The storage facility will be a 100,000-gallon tank. Distribution will be through 6-inch mains. The water district will also have a capability of purchasing 100,000 gallons of treated water in a 24-hour period from the Clay City Water Works.

The Powell County Health Department has added a family planning program.

Construction of the Red River Dam, to be located 1 mile northeast of Bowen, is expected to begin in 1972. When completed, the dam will provide water supply, flood control, and recreation for central Kentucky. The dam will form a reservoir covering approximately 4,000 acres.

Recreation, Entertainment and Livability

Powell County is located in an area that provides numerous recreational activities, such as swimming, boating, camping, fishing, and hiking through the several state parks located in the area. Natural Bridge State Resort Park is located only 10 miles away and Fort Boonesborough State Park, Buckhorn Lake State Park, and Carter Caves State Park are all within 70 miles of Powell County.

Near Clay City is Hidden Valley Ranch Resort, a 1,000-acre resort in the foothills of the Kentucky mountains. Highlighting the recreational activities are horseback riding, swimming, hiking, tennis, golf, and other outdoor activities. There are sauna baths, a country music band, card and game rooms and a variety of indoor recreation. This western town also has a western story library and western goods store.

In Clay City is the Red River Historical Museum which contains Pioneer and Indian artifacts. There is also a circular track and a drag strip in Clay City.

A variety of cultural events are available in Lexington. Eastern Kentucky University, located in Richmond, and the University of Kentucky, in Lexington, provide intercollegiate competition in football, basketball, baseball, golf, track, and tennis.

THE LABOR MARKET

POPULATION TRENDS ^{1/}

Area	Population			Percent Change	
	1970	1960	1950	1960-70	1950-60
Stanton	2,037	753	635	+170.5	+18.6
Clay City	983	764	636	+ 28.7	+20.1
Labor Market Area	76,216	71,906	74,564	+ 6.0	- 3.6
Powell County	7,704	6,674	6,812	+ 15.4	- 2.0
Clark County	24,090	21,075	18,898	+ 14.3	+11.5
Estill County	12,752	12,466	14,677	+ 2.3	-15.1
Lee County	6,587	7,420	8,739	- 11.2	+15.1
Menifee County	4,050	4,276	4,798	- 5.3	-10.9
Montgomery County	15,364	13,461	13,025	+ 14.1	+ 3.3
Wolfe County	5,669	6,534	7,615	- 13.2	-14.2

GENERAL EMPLOYMENT CHARACTERISTICS, 1969 ^{2/}

Major Employment Group	Employment	
	Powell County	Labor Market Area
TOTAL	1,500	24,200
Agricultural	300	4,200
Nonagricultural	1,200	20,000
Manufacturing	300	6,104
Trade and Services	181	4,328
Government	300	3,050
Other	419	6,518

MANUFACTURING EMPLOYMENT TRENDS BY INDUSTRY MARCH 1970 AND 1960 ^{3/}

Industry	Powell County			Labor Market Area		
	1970	1960	% Change	1970	1960	% Change
TOTAL	226	168	+34.5	6,253	2,360	+164.9
Food & kindred products	0	0	--	84	160	- 47.5
Tobacco	0	0	--	3	7	- 57.1
Apparel, textiles, leather	185	124	+49.2	1,644	972	+ 69.1
Lumber & furniture	18	16	+12.5	516	268	+ 92.5
Printing, publishing, paper	3	0	--	68	44	+ 54.5
Chemicals, petroleum, coal, rubber	0	2	--	168	43	+290.7
Stone, clay & glass	20	26	-23.1	89	69	+ 29.0
Primary metals	0	0	--	478	242	+ 97.5
Machinery & metal products	0	0	--	3,187	555	+474.2
Other	0	0	--	16	0	--

POWELL COUNTY MANUFACTURING FIRMS,
THEIR PRODUCTS AND EMPLOYMENT ^{4/}

THEIR PRODUCTS AND EMPLOYMENT				
<u>Firm</u>	<u>Product</u>	<u>Employment</u>		
		<u>Total</u>	<u>Male</u>	<u>Female</u>
<u>Clay City</u>				
The Clay City Times	Newspaper	4	0	4
The Stave Company	Barrel staves	12	12	0
Richardson Lumber Co.	Finishing lumber	15	14	1
<u>Stanton</u>				
Kentucky Creosoting Co.	Pressure treated creosoted products	7	6	1
Lycoming Shoe Co.	Women's shoes	221	11	210
H. B. Sipple Brick Co.	Brick	27	26	1
<u>Bowen</u>				
Maloney Lumber Co.	Lumber	12	12	0

WAGE RATES FOR SELECTED OCCUPATIONS
POWELL COUNTY, KENTUCKY ^{5/}

<u>Classification</u>	<u>Wages Per Hour</u>	
	<u>Starting</u>	<u>Prevailing</u>
<u>Production Employees</u>		
Machinist		\$2.95
Inspector	\$1.60	2.10
Production Laborer	1.60	1.60
<u>Service Employees</u>		
Laborer	\$1.60	\$1.84
Janitor	1.60	1.84
Mechanic, Maintenance		2.95
Shipping Clerk	1.60	1.84
<u>Office Employees</u>		
Stenographer	\$1.60	\$2.50
File Clerk	1.60	1.85
Receptionist	1.60	2.00
Secretary	1.60	2.50
Typist	1.60	1.90



LYCOMING SHOE COMPANY

LABOR ORGANIZATIONS

Union

Representing workers at:

Boot and Shoe Workers, Local 387 Lycoming Shoe Company

CURRENT AND FUTURE LABOR SUPPLY - POWELL COUNTY LABOR MARKET AREA

<u>Area</u>	<u>Current Labor Supply, 1970 ^{6/}</u>			<u>Future Labor Supply by 1976 ^{7/}</u> <u>(Becoming 18 Years of Age)</u>		
	<u>Total</u>	<u>Male</u>	<u>Female</u>	<u>Total</u>	<u>Male</u>	<u>Female</u>
Labor Market						
Area	1,313	1,039	274	7,865	4,015	3,850
Powell	150	113	37	837	414	423
Clark	290	243	47	2,190	1,132	1,058
Estill	322	246	76	1,265	607	658
Lee	50	38	12	892	466	426
Menifee	185	165	20	440	238	202
Montgomery	216	162	54	1,463	771	692
Wolfe	100	72	28	778	387	391

TOTAL PERSONAL INCOME ^{8/}

<u>Area</u>	<u>1968</u>	<u>1959</u>	<u>% Change</u>
Powell County	\$ 7,434,000	\$ 4,441,000	+67.4
Labor Market Area	140,769,000	72,620,000	+93.8
Kentucky	8,516,000,000	4,655,000,000	+82.9

PER CAPITA PERSONAL INCOME ^{9/}

<u>Area</u>	<u>1968</u>	<u>1959</u>	<u>% Change</u>
Powell County	\$1,107	\$ 728	+52.1
Labor Market Area	\$891 to 2,768	\$593 to 1,597	+50.3 to +73.3
Kentucky	2,645	1,552	+70.4

EDUCATION

Public Schools

	<u>Powell County</u>
Total Enrollment	2,031
Elementary	1,331
High School	700
Student-Teacher Ratio	25-1
Elementary	28-1
High School	23-1
State Rating of High School	Standard
Percent High School Graduates to College	24.7
Current Expenditures Per Pupil	\$384.62
Bonded Indebtedness, June 30, 1970	\$837,000

Vocational Schools

	<u>Nearest Area School</u>	<u>Nearest Extension Center</u>
	Central Kentucky Area Vocational School	Montgomery County
Location	Lexington	Mt. Sterling
Miles Distant	35	20
Curriculum	Accounting Jr. Management Data Processing General Clerical Secretarial-Steno Practical Nursing Distributive Education Electronics (Communication) Tool and Die Design Auto Body Repair Auto Mechanics Commercial Foods Drafting, Electricity Machine Shop, Printing Office Machine Repair Radio and TV Repair Sheet Metal Welding	Auto Mechanics Carpentry Drafting Electricity General Clerical Secretarial-Steno

Colleges and Universities

<u>Name</u>	<u>Area - Within 50 Miles</u>		<u>Highest Degree Conferred</u>
	<u>Location</u>	<u>Enrollment</u>	
Eastern Kentucky University	Richmond	9,600	Masters
Morehead State University	Morehead	6,030	Masters
University of Kentucky	Lexington	17,790	Ph. D., M. D., D. M. D., J. D.
Transylvania University	Lexington	859	Masters
Berea College	Berea	1,400	Baccalaureate
Georgetown College	Georgetown	1,425	Masters
Asbury College	Wilmore	1,044	Baccalaureate
Lees Junior College	Jackson	405	Associate
Southeastern Christian Junior College	Winchester	150	Associate
Lexington Technical Institute	Lexington	110	Associate

TRANSPORTATION

Rail

Lines serving Powell County - The nearest rail service, the Chesapeake & Ohio and the Louisville & Nashville, is located at Winchester, only 23 miles from Stanton.

Services - Chesapeake & Ohio has passenger, freight, siding; Louisville & Nashville has freight and siding.

RAILWAY TRANSIT TIME FROM WINCHESTER, KENTUCKY, TO: 10/

City	No. of Days		City	No. of Days	
	CL			CL	
Atlanta, Ga.	2		Los Angeles, Calif.	5	
Birmingham, Ala.	3		Louisville, Ky.	1	
Chicago, Ill.	3		Nashville, Tenn.	2	
Cincinnati, Ohio	1		New Orleans, La.	4	
Cleveland, Ohio	3		New York, N. Y.	4	
Detroit, Mich.	4		Pittsburgh, Pa.	3	
Knoxville, Tenn.	1		St. Louis, Mo.	2	

Truck Service

Company

Hazard Express
Meade Transfer Company
United Parcel Service

Home Office

Hazard, Kentucky
Neon, Kentucky
Louisville, Kentucky

HIGHWAY MILES AND TRUCK TRANSIT TIME IN DAYS FROM STANTON, KENTUCKY, TO SELECTED MARKET CENTERS

City	Highway Miles	Delivery Time <u>11/</u>		City	Highway Miles	Delivery Time	
		TL				Miles	TL
Atlanta, Ga.	387	3		Los Angeles, Calif.	2,400	7	
Birmingham, Ala.	410	3		Louisville, Ky.	110	1	
Chicago, Ill.	414	3		Nashville, Tenn.	259	2	
Cincinnati, Ohio	117	2		New Orleans, La.	710	5	
Cleveland, Ohio	454	3		New York, N. Y.	850	4	
Detroit, Mich.	475	3		Pittsburgh, Pa.	475	4	
Knoxville, Tenn.	230	2		St. Louis, Mo.	374	4	

Air

<u>Local</u>	<u>Nearest Commercial</u>
Stanton Airport	Blue Grass Field
Location: Stanton	Lexington, 35 miles from Stanton
Runways: 1 paved	3 paved
Length: 3,000 ft.	6,500 ft.; 3,500 ft.; 3,500 ft.
Traffic	
Control: Wind sock	Tower transmitter, guards, approach control, ground control, ILS system, radio transmitter
Lighting: Sunset to sunrise	Approach lighting system, beacon, runways and obstruction lighted
Services: 80 and 100 octane, hangar and tie down	Jet fuel, major A & E repairs, storage, restaurant, Weather Bureau and flight instruction, charter service, taxi, U-Drive-It service, Eastern, Delta, Piedmont, and Allegheny Airlines, Buckeye Airlines (freight)

Bus

Stanton and Clay City - Southern Greyhound Bus Lines

POWER AND FUEL

Electricity

Company serving Stanton, Clay City and Powell County - Clark Rural Electric Cooperative Corporation
Source of power - East Kentucky Power Cooperative
Total generating capacity - 515,000 KW
Industrial rates furnished by - Clark Rural Electric Cooperative Corporation, P. O. Box 748, Route 15, Winchester, Kentucky 40391

Natural Gas

Company serving Stanton - Delta Natural Gas Company
Source of supply - Kentucky Gas Transmission Corporation
Size of transmission lines - 3 1/2 inches
Distribution lines - 4-, 3-, 2- and 1-inch
Btu content - 1050; Specific gravity - .59; Distribution pressure - 10 psi

Monthly Rates:

First	1,000 cu. ft.	\$ 2.50 (Minimum)
Next	1,000 cu. ft.	4.10
Next	3,000 cu. ft.	5.25
Next	5,000 cu. ft.	7.55
Next	10,000 cu. ft.	12.70
All over	20,000 cu. ft. used per month	.85 per Mcf

Company serving Clay City - Delta Natural Gas Company
Source of supply - Kentucky Gas Transmission Corporation
Size of transmission lines - 2 1/4 inches
Distribution lines - 2-inch, 1-inch
Btu content - 1050; Specific gravity - .59; Distribution pressure - 10 psi

Monthly Rates:

First	1,000 cu. ft.	\$ 2.50 (Minimum)
Next	1,000 cu. ft.	4.10
Next	3,000 cu. ft.	5.25
Next	5,000 cu. ft.	7.55
Next	10,000 cu. ft.	12.70
All over	20,000 cu. ft. used per month	.85 Per Mcf

WATER AND SEWERAGE

Water

Company serving Stanton - Stanton Water Works

Source - Red River

Treatment plant capacity - 360,000 gpd

Average daily consumption - 150,000 gallons

Peak daily consumption - 170,000 gallons

Type treatment - Settled, filtered, chlorinated

Storage capacity - 260,000 gallons

Average pressure - 60 psi

Size mains - 10, 8, 6, 4, and 2 inches

MONTHLY WATER RATES FOR WHOLESALE AND INDUSTRIAL CONSUMERS

<u>Quantity (gallons)</u>		
<u>At Least</u>	<u>Net Exceeding</u>	
-0-	3,000	\$ 5.21
3,001	4,000	6.37
4,001	5,000	7.53
5,001	6,000	8.53
6,001	7,000	9.50
7,001	8,000	10.53
8,001	9,000	11.53
9,001	10,000	12.53
10,001	11,000	13.42
11,001	12,000	14.32
12,001	13,000	15.21
13,001	14,000	16.11
14,001	15,000	17.00
15,001	16,000	17.79
16,001	17,000	18.58
17,001	18,000	19.37
18,001	19,000	20.16
19,001	20,000	20.95

20,001 through 60,000 (Note)

(cont'd)

<u>At Least</u>	<u>Net Exceeding</u>	
24,001	25,000	\$24.37
29,001	30,000	27.79
34,001	35,000	31.21
39,001	40,000	34.63
44,001	45,000	38.05
49,001	50,000	41.48
54,001	55,000	44.90
59,001	60,000	48.32

Note: Values for quantities consumed in between the scale figures shown are to be determined by selecting the value of the highest scale figure shown that does not exceed the total consumed and adding the remainder from the unit scale shown below.

-0-	1,000	\$.69
1,001	2,000	1.37
2,001	3,000	2.05
3,001	4,000	2.47

Company serving Clay City - Clay City Water Works

Source - Red River

Treatment plant capacity - 288,000 gpd

Average daily consumption - 60,000 to 75,000 gallons

Peak daily consumption - 100,000 gallons

Type treatment - Coagulated, settled, filtered, chlorinated

Storage capacity - 160,000 gallons

Average pressure - 65 psi

Size mains - 6, 4, and 3 inches

MONTHLY WATER RATES FOR WHOLESALE AND INDUSTRIAL CONSUMERS

3/4 inch meters

\$ 5.25	2,000 gallons
7.60	5,000 gallons
11.55	10,000 gallons
11.87	10,500 gallons
12.18	11,000 gallons
12.50	11,500 gallons
14.70	15,000 gallons

For the next 15,000 gallons: \$14 plus \$.05 for each 100 gallons plus 5% sales tax.

1-inch meters

\$ 9.55	7,000 gallons
11.55	10,000 gallons
11.87	10,500 gallons
12.81	12,000 gallons
14.70	15,000 gallons

For all over 30,000 gallons: \$21.50 plus \$.04
for each 100 gallons plus 5% sales tax.

Surface water sources - Red River and its tributaries

Average discharge - Red River at Clay City, 465 cfs

Expected ground water yield - 5 to 50 gpm in central and southern tip
of county; 5 gpm or less for remainder of county

Sewerage

Company serving Stanton - Stanton Sewer System

Design capacity - 170,000 gallons per day

Average daily flow - 130,000 gallons; Treatment - Primary and secondary

Type treatment - Aeration

Treated effluent discharged into - Red River

Size of sanitary mains - 8 and 10 inches

Rates: (Based on water usage)

Quantity (gallons

At Least

Not
Exceeding

-0-	3,000	\$ 3.47
3,001	4,000	4.24
4,001	5,000	5.01
5,001	6,000	5.67
6,001	7,000	6.34
7,001	8,000	7.00
8,001	9,000	7.67
9,001	10,000	8.33
10,001	11,000	8.93
11,001	12,000	9.52
12,001	13,000	10.12
13,001	14,000	10.71
14,001	15,000	11.31
15,001	16,000	11.83
16,001	17,000	12.36
17,001	18,000	12.88
18,001	19,000	13.41
19,001	20,000	13.93

(cont'd)

<u>At Least</u>	<u>Net</u> <u>Exceeding</u>	
	<u>20,001 through 60,000 (Note)</u>	
24,001	25,000	\$16.24
29,001	30,000	18.48
34,001	35,000	20.76
39,001	40,000	23.03
44,001	45,000	25.31
49,001	50,000	27.58
54,001	55,000	29.86
59,001	60,000	32.13

Note: Values for quantities consumed in between the scale figures shown are to be determined by selecting the value of the highest scale figure shown that does not exceed the total consumed and adding the remainder from the unit scale shown below.

-0-	1,000	\$.46
1,001	2,000	.91
2,001	3,000	1.37
3,001	4,000	1.82

Company serving Clay City - Clay City Sewer System

Design capacity - 200,000 gpd

Treatment - secondary

Type treatment - Aeration, chlorination, contact stabilization plant, activated sludge process

Treated effluent discharged into - Red River

Size of sanitary mains - 12-inch

Remarks: This system is presently under construction. Expected completion date is the Spring of 1971.

LOCAL GOVERNMENT

City

Stanton

Structure - Mayor - 4-year term; 6 councilmen - 2-year terms
 Budget 1970-71 - General Fund \$32,800; Water and Sewer Fund \$75,600
 Fees and licenses - Occupational - \$25 yearly; unloading - \$25 yearly

Clay City

Structure - Mayor - 4-year term; 6 councilmen - 2-year terms
 Budget 1969-70 - General Fund \$13,756; Water and Sewer Fund \$23,500
 Fees and licenses - Unloading license, 1/2 ton truck - \$10, 1 to 1 1/2 ton truck - \$15; City sticker - \$5

County

Structure - county judge - 4-year term; 5 magistrates - 4-year terms
 Budget 1970-71 - General Fund \$73,050; Road Fund \$31,500

Assessed Value of Property, 1970

<u>Classes of Property*</u>	<u>Powell County</u>
Real Estate	\$19,937,498
Tangibles	3,204,775
Public Service	17,667,019

Local General Property Tax Rates Per \$100 of Assessed Valuation, 1970 ^{12/}

<u>Taxing Unit**</u>	<u>Stanton</u>	<u>Clay City</u>	<u>Powell County</u>
State	\$.015	\$.015	\$.015
County	.194	.194	.194
School	.456	.456	.456
City	.250	.143	
Total	\$.915	\$.808	\$.665

*Property assessed at 100 percent of fair value.

**Manufacturing machinery, raw materials inventories and goods in process inventories are not subject to local tax. State rate is only \$.15 per \$100.

Planning and Zoning

Agency - Stanton Planning Commission

Plans completed - General Plan, Existing Land Use Map, Subdivision

Regulations, Zoning Ordinance

Codes adopted - All major codes

Safety

<u>Police</u>	<u>Stanton</u>	<u>Clay City</u>	<u>Powell County</u>
Total staff	3	3	4
Radio-patrol cars	1	2	5
Other equipment	standard	standard	standard

Fire

Volunteers	15	25
Equipment:		
750-gpm pumpers	1	
500-gpm pumpers	1	1
250-gpm pumpers		1

Rescue Service

Civil Defense Rescue Squad:

Number of volunteers - 8

Equipment - Rescue truck and power unit, communications equipment,
fire truck

Personnel training - Fire fighting, first aid

Sanitation

	<u>Stanton</u>	<u>Clay City</u>
Type service	private	private
Cost		
residential	\$2 per mo.	\$2 per mo.
business	\$3 per mo.	\$4 per mo.
Collection frequency		
residential	monthly	weekly
business	monthly	weekly
Trash pickup	weekly	weekly
Disposal method	dump	dump

HEALTH

Hospitals

<u>Nearest General Hospital</u>	<u>Location</u>	<u>Beds</u>
Clark County Hospital	Winchester	81

General hospital facilities - Emergency room, 3 operating and 2 delivery rooms, physical therapy, laboratory, X-ray, pharmacy

Medical staff - 180 employees - clerks, internist, psychiatrist;
13 physicians on staff - 4 oral surgeons, 6 dentists on dental staff

Local Medical Personnel

Stanton - Three medical doctors, one dentist, one optometrist

Nursing Homes

	<u>Number</u>	<u>Beds</u>
Personal care homes	1	5

Public Health

Facility - Powell County Health Department

Staff - Full-time - nurse and clerk; part-time - sanitarian, health officer, nurse and supervisor

Budget 1970-71 - \$25,456

OTHER LOCAL FACILITIES

Communications

	<u>Stanton</u>	<u>Clay City</u>
Telephone -	South Central Bell	South Central Bell
Services -	Telephone Co. Standard	Telephone Co. Standard
Postal - U.S. Post Office		
Class -	Second-class	Second-class
Mail received -	twice daily	3 times daily
Mail dispatched -	twice daily	5 times daily
Newspapers -		Clay City Times
Weekly and circulation -		2,900
Other papers received from -	Lexington, Louisville	Lexington, Louisville
Radio -		
Stations received from -	Lexington, Mt. Sterling, Winchester, Irvine, Beattyville	Lexington, Mt. Sterling, Winchester, Irvine, Beattyville
Television -		
Cable service -		Yes
Reception from -	Lexington	Lexington
Kentucky Educational Television -	Received from Lexington, Channel 46	Received from Lexington, Channel 46

Library Services

Public libraries - Powell County Public Library
 Size collection - 7,909 volumes
 Circulation, 1970 - 27,346
 Services - Circulation of records, participate in head start program,
 films, records, Bookmobile



CLAY CITY BRANCH, POWELL COUNTY BANK



STANTON MUNICIPAL HOUSING PROJECT

Religious Institutions

	<u>Stanton</u>	<u>Clay City</u>
Number of churches -	16	9
Denominations -	Baptist, Christian, Church of God, Church of God of Prophecy, Presbyterian, Methodist	Baptist, Christian, Church of Christ, Church of God, Methodist

Financial Institutions

<u>Bank</u>	<u>Statement as of June 30, 1970</u>	
	<u>Assets</u>	<u>Deposits</u>
Powell County Bank	\$7,645,809.87	\$6,903,594.51

Hotels and Motels

<u>Number</u>	<u>Units</u>
6	194

Clubs and Organizations

Stanton

Business and Civic - Lions, Jaycees, Powell County Industrial and Development Association

Fraternal - Masons

Women's - DAR, Powell County Women's Club

Youth - 4-H, FFA, FHA, Boy Scouts

Clay City

Business and Civic - Lions

Fraternal - American Legion

Women's - Eastern Star, Homemakers

Youth - 4-H, Boy Scouts

RECREATION

Local

	<u>Stanton</u>	<u>Clay City</u>
Public Recreation Facilities		
Supervised Program -	Yes	Yes
Parks -	Lions Club Park (50-acre)	
Swimming pool -		At Hidden Valley
Golf course -		At Hidden Valley
Baseball diamonds	2	1
Other	Lions Club Fair & Horse Show	Lions Club Fair & Horse Show
Private Recreation Facilities		
Movie theater	1 drive-in	
Other	Skating rink	Drag strip Circular Raceway Go Cart track Driving range
Tourist Attractions		
Hidden Valley Ranch Resort		

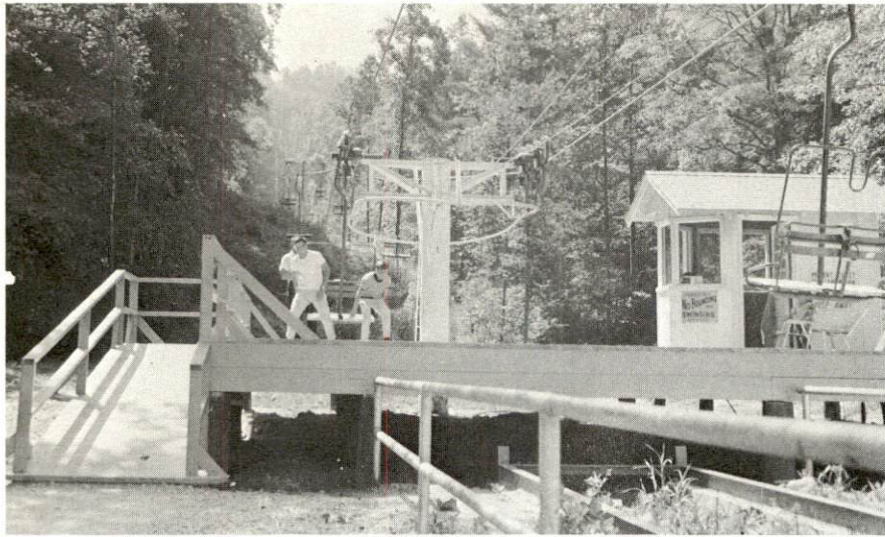
Area (Within 100 miles)

State Parks - Natural Bridge State Resort Park
Fort Boonesborough State Park
Buckhorn Lake State Park
Old Fort Harrod State Park
Carter Caves State Park

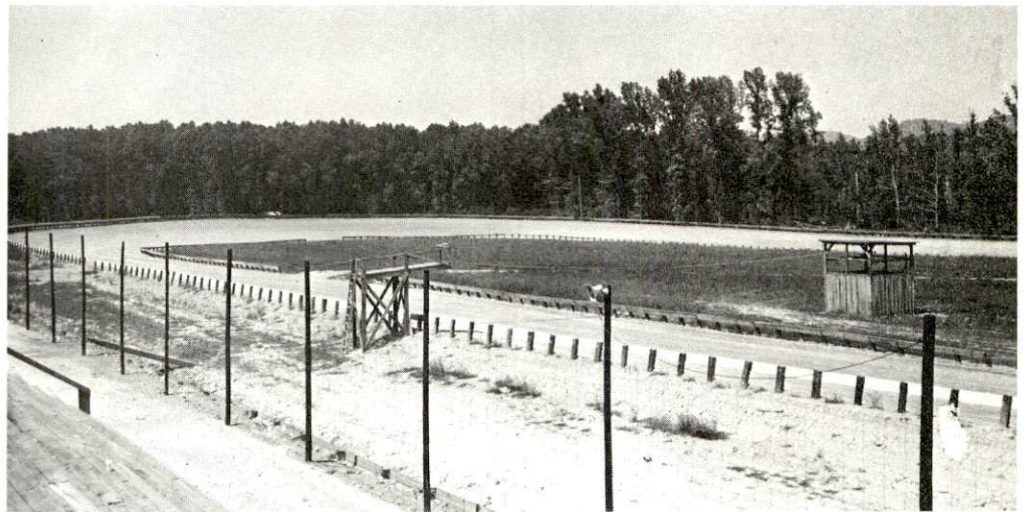
State Shrines - William Whitley House State Shrine
Isaac Shelby State Shrine
Constitution Square State Shrine
Perryville Battlefield State Shrine

National Parks and Shrines - Daniel Boone National Forest

Other Attractions - Red River Historical Museum



CHAIR LIFT
NATURAL BRIDGE STATE PARK



CLAY CITY RACE WAY



CLUBHOUSE
POWELL COUNTY LIONS CLUB

AGRICULTURE - NATURAL RESOURCES - CLIMATE

Agriculture 13/

	<u>Powell County</u>	<u>Labor Market Area</u>
Total land area (acres)	110,720	987,520
Percent of area in farm land	60	47.8
Number of farms	429	4,958
Average size of farms (acres)	123.6	119.7
1964 value of all farm products	\$889,608	\$20,437,885
Value per farm	2,074	4,122
Total crop sales	613,654	10,598,399
Total livestock & livestock products	275,151	9,833,454
1968 agricultural production included:		
Burley tobacco (lbs.)	845,000	18,883,000
Corn (bu.)	47,000	915,000
Cattle and calves (number)	4,200	84,000
Hogs and pigs (number)	1,700	19,000
Milk production, 1967 (lbs.)	1,720,000	35,585,000

Natural Resources

Principal mineral resources	Limestone, petroleum, miscellaneous clay
Other mineral resources	Sandstone, sand, gravel, coal, natural gas
Acres of commercial forestland	80,700
Most abundant tree species	Red oak, white oak, hickory, yellow poplar, yellow pine, beech, soft maple

Climate 14/

	<u>Powell County</u>
Temperature	
Annual mean (30-year record)	55.6 degrees
Average annual, 1969	54.6 degrees
Record highest, July 1966 (6-year record)	98.0 degrees
Record lowest, July 1966 (6-year record)	-10.0 degrees
Seasonal heating degree-days (30-year record)	4,683
Precipitation	
Mean annual total (30-year record)	44.73 inches
Mean annual snow and sleet (25-year record)	16.00 inches
Total precipitation 1969	39.50 inches
Mean number days precipitation (25-year record)	
(.01 inch or more)	128
Average number days thunderstorms (17-year record)	47
Prevailing winds	south

HISTORY

Powell County, the one-hundred and first county formed in Kentucky, dates from 1852. Its territory was taken from Clark, Estill, and Montgomery Counties. Later it gave land to help form Wolfe, Menifee, and Lee Counties. Powell County is drained by the Red River and its several tributaries which flow in a westerly direction. The soil is fertile in the river and creek bottoms, with sandy, stony, thin soil on the slopes. The topography of the land is rolling to mountainous. Miscellaneous clays are fairly well scattered in small patches throughout the county, with the largest deposits near Clay City and Stanton.

Powell County was settled soon after Daniel Boone came to Kentucky. Powell County's extreme northwestern portion served as the location of the last Indian villages in Kentucky. In 1769, Daniel Boone and John Finley camped at Oil Springs, near Pilot Knob, the highest elevation in the county. From this summit, some 800 feet above the surrounding plain, Boone first saw the Bluegrass uplands in the distance.

Powell County was named for Lazarus W. Powell, a native of Henderson County, who served a term in the State Legislature and became Governor in 1851. Powell was elected to the United States Senate in 1859. He opposed secession, but felt the North's program to subjugate the South was little less than barbarian. He was accused of disloyalty to the Union, and in 1862 Senator Garret Davis presented a resolution calling for Powell's expulsion from the Senate. The resolution was defeated and Davis later retracted the charges. Powell failed in a bid for re-election to the Senate in 1865, and died at his home a year and one-half later on July 3, 1867.

Powell County suffered during the Civil War, not from invasion, but at the hands of lawless bands who plundered the citizens and compelled them to take refuge in the mountains.

Stanton, the county seat, was first called Beaver Pond, then renamed in 1852 for Richard H. Stanton, a member of Congress from 1849 to 1855. He also served as Circuit Judge from 1868 to 1874, and was the author of Stanton's Revised Statutes, a valuable contribution to Kentucky's laws.

Clay City was the site of the Red River Iron Works which produced nails, plowshares, and cannon balls. Some of the cannon balls forged there were used in the War of 1812.

Natural Bridge is a reddish rock-span that forms a dividing line between Powell and Wolfe Counties. It was formed by the disintegrating action of wind, mist, rain, and frost on the softer conglomerate limestone under the capstone. The arch has a clearance of 92 feet and a roadway breadth at the top of more than 20 feet.

Names worthy of remembrance:

Daniel C. Dillard - Served with distinction in the Kentucky House of Representatives prior to the Civil War.

John T. Clark - Served as a state legislator during the Civil War and was influential in preventing Kentucky from seceding.

Robert Clark, Jr. and William Smith - Owned the Clark and Smith Iron Works on Red River.

SOURCES OF INFORMATION

- 1/ U. S. Department of Commerce, Bureau of the Census, Census of Population, 1950, 1960, 1970.
- 2/ Kentucky Department of Economic Security, Division of Research and Statistics.
- 3/ Kentucky Department of Economic Security, Number of Workers in Manufacturing Industries Covered by Kentucky Unemployment Insurance Law Classified by Industry and County, March 1960, March 1970.
- 4/ Kentucky Department of Commerce, 1970 Kentucky Directory of Manufacturers; City of Clay City.
- 5/ Kentucky Department of Economic Security, Division of Employment Services, Winchester Office.
- 6/ Kentucky Department of Economic Security, Kentucky Labor Supply Estimates by County, January 1970.
- 7/ Kentucky Department of Commerce, Future Labor Supply by 1976.
- 8/ University of Kentucky, Office of Development Services and Business Research, Total Personal Income for Kentucky.
- 9/ University of Kentucky, Office of Development Services and Business Research, Per Capita Income in Kentucky.
- 10/ Louisville & Nashville Railroad, Louisville, Kentucky.
- 11/ Hazard Express, Lexington, Kentucky
- 12/ Tax Commissioner, Powell County.
- 13/ U. S. Department of Commerce, Bureau of the Census, Census of Agriculture, 1964. U. S. Department of Agriculture and Kentucky Department of Agriculture, Kentucky Agricultural Statistics, 1969.
- 14/ U. S. Department of Commerce, Environmental Science Services Administration, Climatological Data, 1969.

All other information was obtained from governmental offices, local businesses and organizations.