

1970

# Industrial Resources: Allen County, Kentucky

Kentucky Library Research Collections  
Western Kentucky University, [spcol@wku.edu](mailto:spcol@wku.edu)

Follow this and additional works at: [https://digitalcommons.wku.edu/allen\\_cty](https://digitalcommons.wku.edu/allen_cty)

 Part of the [Business Administration, Management, and Operations Commons](#), [Growth and Development Commons](#), and the [Infrastructure Commons](#)

---

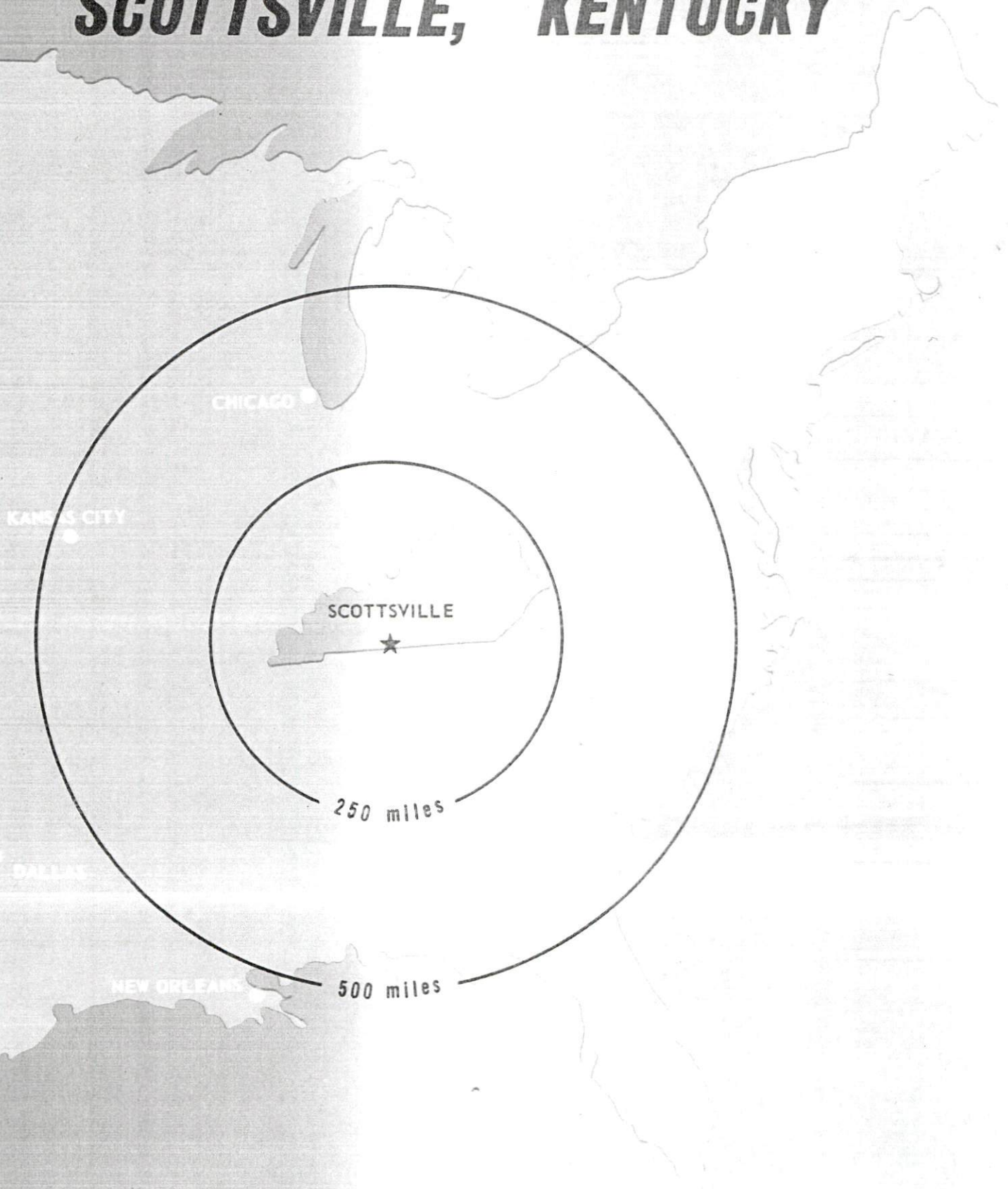
## Recommended Citation

Kentucky Library Research Collections, "Industrial Resources: Allen County, Kentucky" (1970). *Allen County*. Paper 13.  
[https://digitalcommons.wku.edu/allen\\_cty/13](https://digitalcommons.wku.edu/allen_cty/13)

This Report is brought to you for free and open access by TopSCHOLAR®. It has been accepted for inclusion in Allen County by an authorized administrator of TopSCHOLAR®. For more information, please contact [topscholar@wku.edu](mailto:topscholar@wku.edu).

# INDUSTRIAL RESOURCES

## ***SCOTTSVILLE, KENTUCKY***



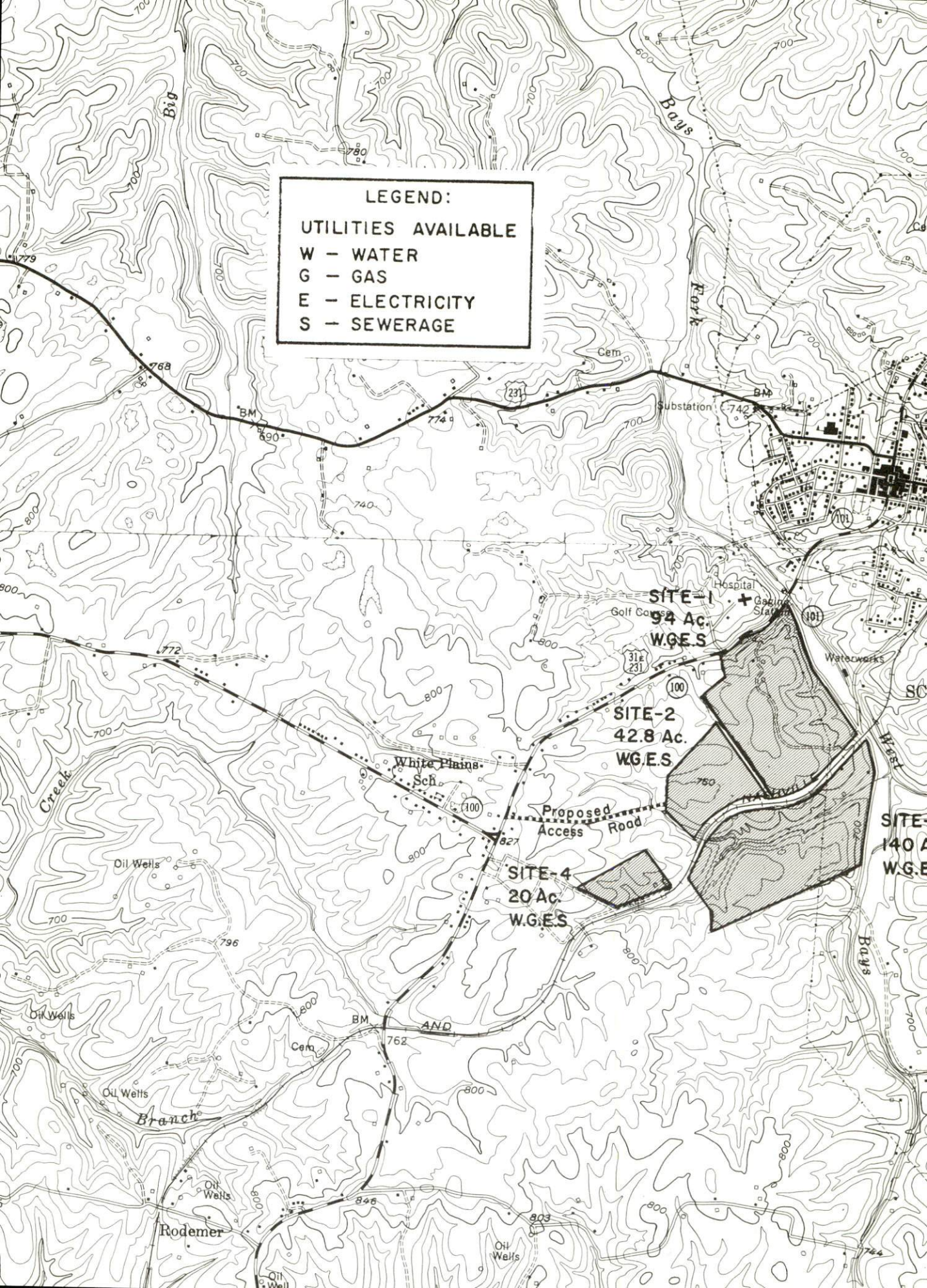
SCOTTSVILLE INDUSTRIAL SITES

1970

**LEGEND:**

**UTILITIES AVAILABLE**

- W - WATER
- G - GAS
- E - ELECTRICITY
- S - SEWERAGE

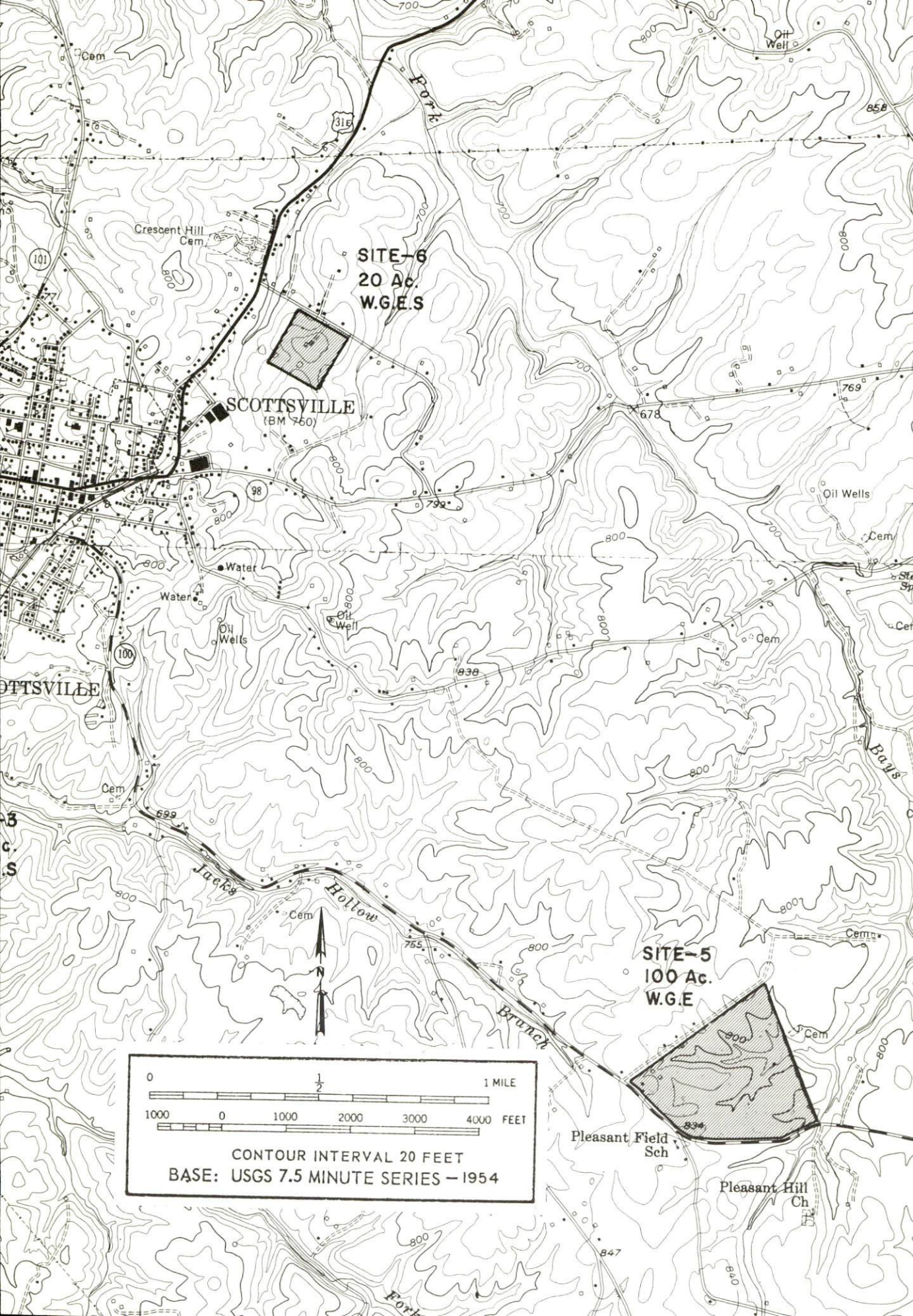


**SITE-1**  
94 Ac.  
W.G.E.S.

**SITE-2**  
42.8 Ac.  
W.G.E.S.

**SITE-4**  
20 Ac.  
W.G.E.S.

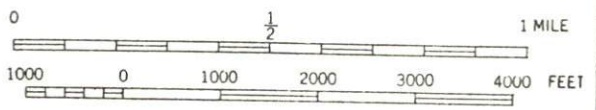
**SITE-**  
140 Ac.  
W.G.E.



**SITE-6**  
20 Ac.  
W.G.E.S

**SCOTTSVILLE**  
(BM 750)

**SITE-5**  
100 Ac.  
W.G.E



CONTOUR INTERVAL 20 FEET  
BASE: USGS 7.5 MINUTE SERIES - 1954

## SCOTTSVILLE INDUSTRIAL SITES

For additional information concerning the following sites, contact Mr. Elmer Bashore, President, Scottsville-Allen County Chamber of Commerce, Scottsville, Kentucky, or the Kentucky Department of Commerce, Frankfort, Kentucky.

SITE # 1: ACREAGE AND TOPOGRAPHY: 94 acres, portions level to steep  
LOCATION: Southwest of Scottsville just outside city limits  
ZONING: Agriculture  
HIGHWAY ACCESS: U. S. 31-E  
RAILROADS: Louisville & Nashville Railroad  
WATER: Will be extended  
SIZE LINE: 8-inch line on adjacent property  
GAS: Will be extended  
SIZE LINE: Gas line within 1,000 feet of property  
ELECTRICITY: Tri-County Electric Membership Cooperative  
SEWERAGE: Will be extended - adjacent to property  
OPTIONED BY: Scottsville Industrial Foundation

SITE # 2: ACREAGE AND TOPOGRAPHY: 42.8 acres (according to survey made by Padgett Engineering of Bowling Green - 20 feet variation in topography)  
LOCATION: Southwest of Scottsville just outside city limits  
ZONING: Agriculture  
HIGHWAY ACCESS: Access road right-of-way to U. S. 31-E  
RAILROADS: Louisville & Nashville Railroad  
WATER: Will be extended  
SIZE LINE: 8-inch line on adjacent property  
GAS: Will be extended  
SIZE LINE: Gas line within 1,000 feet of property  
ELECTRICITY: Tri-County Electric Membership Cooperative  
SEWERAGE: Will be extended - adjacent to property  
OWNERSHIP: Scottsville Industrial Foundation

SITE # 3: ACREAGE AND TOPOGRAPHY: 140 acres, level to slightly rolling  
LOCATION: One-half mile south of Scottsville  
HIGHWAY ACCESS: Kentucky 101  
RAILROADS: Louisville & Nashville Railroad borders northwest edge of site  
WATER: Scottsville municipally owned system  
GAS: Scottsville Gas Company  
ELECTRICITY: Tri-County RECC  
SEWERAGE: Scottsville municipally owned system  
OWNERSHIP: Privately owned

SITE # 4: ACREAGE AND TOPOGRAPHY: 20 acres, level to rolling  
LOCATION: Approximately 2 1/2 miles southwest of Scottsville off U. S. 31-E  
HIGHWAY ACCESS: Access road off U. S. 31-E  
RAILROADS: Louisville & Nashville Railroad borders southeast edge of site  
WATER: Available  
GAS: Available  
ELECTRICITY: Available  
SEWERAGE: Available  
OWNERSHIP: Privately owned

SITE # 5: ACREAGE AND TOPOGRAPHY: 100 acres, level to rolling  
LOCATION: Approximately 3 miles southeast of Scottsville  
HIGHWAY ACCESS: Kentucky 100  
WATER: Available  
GAS: Lines will be extended to site  
ELECTRICITY: Available  
OWNERSHIP: Privately owned

SITE # 6: ACREAGE AND TOPOGRAPHY: 20 acres, gently rolling  
LOCATION: Three-fourth mile northeast of city limits  
HIGHWAY ACCESS: Fronts county maintained road; one-fifth mile to U. S. 31-E  
WATER: Scottsville municipally owned system  
GAS: Scottsville Gas Company  
ELECTRICITY: Tri-County RECC  
SEWERAGE: Scottsville municipally owned system  
OWNERSHIP: Privately owned

INDUSTRIAL RESOURCES  
SCOTTSVILLE, KENTUCKY

Prepared by  
The Kentucky Department of Commerce  
in cooperation with  
The Scottsville-Allen County Chamber of Commerce

1970

This copy has been prepared by the Kentucky Department of Commerce,  
Division of Research and Planning, and the cost of printing paid from  
state funds.



## TABLE OF CONTENTS

| Chapter                                                   | Page |
|-----------------------------------------------------------|------|
| INDUSTRIAL SITES . . . . .                                | i    |
| SCOTTSVILLE, KENTUCKY - A RESOURCE PROFILE . . . . .      | 1    |
| THE LABOR MARKET . . . . .                                | 3    |
| Population Trends . . . . .                               | 3    |
| General Employment Characteristics . . . . .              | 3    |
| Manufacturing Employment Trends by Industry . . . . .     | 3    |
| Scottsville Manufacturing Firms, Their Products . . . . . |      |
| and Employment . . . . .                                  | 4    |
| Wage Rates for Selected Occupations . . . . .             | 6    |
| Labor Organizations . . . . .                             | 6    |
| Current and Future Labor Supply . . . . .                 | 7    |
| Total Personal Income . . . . .                           | 7    |
| Per Capita Personal Income . . . . .                      | 7    |
| EDUCATION . . . . .                                       | 8    |
| Public Schools . . . . .                                  | 8    |
| Vocational Schools . . . . .                              | 8    |
| Colleges and Universities . . . . .                       | 10   |
| TRANSPORTATION . . . . .                                  | 11   |
| Rail . . . . .                                            | 11   |
| Truck Service . . . . .                                   | 11   |
| Air . . . . .                                             | 12   |
| Bus . . . . .                                             | 12   |
| Taxi . . . . .                                            | 12   |
| POWER AND FUEL . . . . .                                  | 13   |
| Electricity . . . . .                                     | 13   |
| Natural Gas . . . . .                                     | 13   |
| WATER AND SEWERAGE . . . . .                              | 14   |
| Water . . . . .                                           | 14   |
| Sewerage . . . . .                                        | 14   |

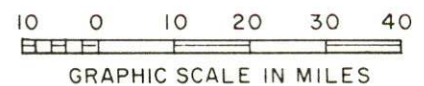
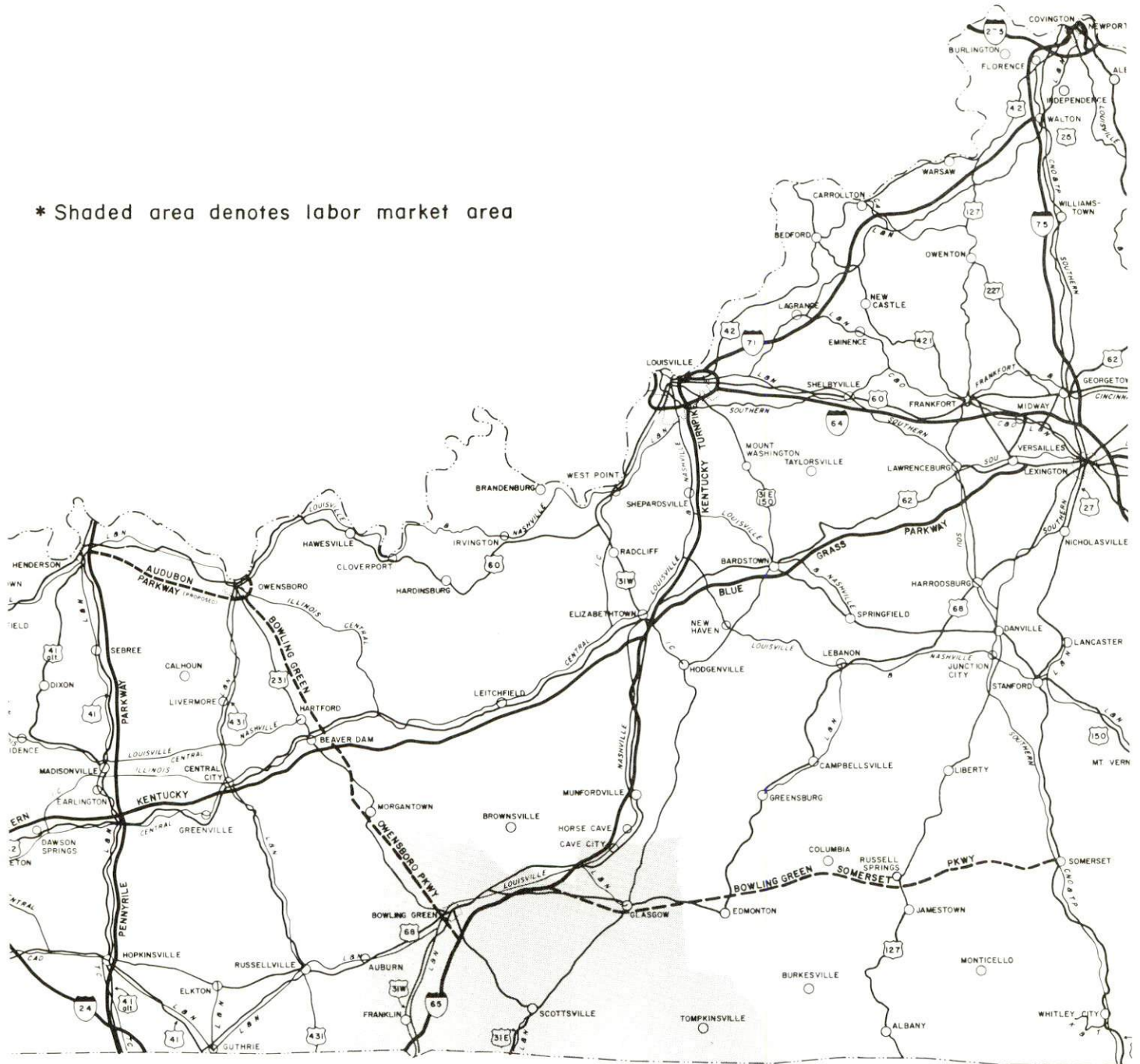
| <u>Chapter</u>                                                                       | <u>Page</u> |
|--------------------------------------------------------------------------------------|-------------|
| LOCAL GOVERNMENT . . . . .                                                           | 15          |
| City . . . . .                                                                       | 15          |
| County . . . . .                                                                     | 15          |
| Assessed Value of Property - 1969 . . . . .                                          | 15          |
| Local General Property Tax Rates Per \$100 of<br>Assessed Valuation - 1969 . . . . . | 15          |
| Safety . . . . .                                                                     | 16          |
| Police . . . . .                                                                     | 16          |
| Fire . . . . .                                                                       | 16          |
| Rescue Service . . . . .                                                             | 16          |
| Sanitation . . . . .                                                                 | 16          |
| HEALTH . . . . .                                                                     | 17          |
| Hospitals . . . . .                                                                  | 17          |
| Nursing Homes . . . . .                                                              | 17          |
| Public Health . . . . .                                                              | 17          |
| OTHER LOCAL FACILITIES . . . . .                                                     | 18          |
| Communications . . . . .                                                             | 18          |
| Library Services . . . . .                                                           | 18          |
| Religious Institutions . . . . .                                                     | 18          |
| Financial Institutions . . . . .                                                     | 19          |
| Hotels and Motels . . . . .                                                          | 19          |
| Clubs and Organizations . . . . .                                                    | 19          |
| RECREATION . . . . .                                                                 | 21          |
| Local . . . . .                                                                      | 21          |
| Area . . . . .                                                                       | 21          |
| AGRICULTURE - NATURAL RESOURCES - CLIMATE . . . . .                                  | 22          |
| Agriculture . . . . .                                                                | 22          |
| Natural Resources . . . . .                                                          | 22          |
| Climate . . . . .                                                                    | 22          |
| HISTORY . . . . .                                                                    | 23          |



AERIAL VIEW OF SCOTTSVILLE, KENTUCKY

# SCOTTSVILLE LABOR MARKET AREA

\* Shaded area denotes labor market area



## SCOTTSVILLE, KENTUCKY - A RESOURCE PROFILE

### Location

Scottsville, the county seat of Allen County, is located in south-central Kentucky, on the Kentucky-Tennessee border. Nashville, only 65 miles south, is the nearest major city. Louisville, Kentucky, is 120 miles north and Lexington, Kentucky, is 160 miles northeast. Population of Scottsville was 3,324 in 1960. In January, 1969, the population of Allen County was estimated at 12,200.

### The Economic Framework

Total employment in Allen County averaged 4,515 in 1968, with manufacturing providing 850 of these jobs. Since 1959, manufacturing employment increased by 286 jobs, or 50.8 percent. Major industrial products are lumber, wood products and apparel.

Per capita income in the county in 1968 was \$1,773, or \$841 below the Kentucky average.

Area employment, which includes Allen and the adjoining Kentucky Counties of Barren, Monroe, Simpson, and Warren, totals 48,640 including 9,462 in agriculture. Manufacturing furnishes 11,740 jobs. Area industrial employment has more than doubled since 1959, with sharpest gains in machinery and metal products, lumber and wood products, apparel and rubber products.

Despite important industrial gains in recent years, the area still has a deficit of 455 manufacturing jobs when measured against the national industrial employment-population ratio.

### Resources For Growth

1. There is a current estimated labor supply of 3,185 men and 1,485 women available for industrial jobs in the labor market area. Workers could reasonably be expected to commute to Scottsville from Monroe and Simpson Counties. In addition, 5,480 young men and 5,235 young women will become 18 years of age by 1975 and potentially available for work.

2. The local transportation capability is good. The Louisville & Nashville Railroad serves the area with a variety of services. There is easy access to Interstate 65, U. S. 31-E, and U. S. 231.

3. Energy - both gas and electricity - is available in large quantity and there is an ample water supply.

4. Industrial sites - Scottsville has six available industrial sites.

5. Western Kentucky University is 24 miles distant.

#### Community Programs For Improvement

Beautification of the square in the center of Scottsville has recently been completed. A new shopping center is under construction.

#### Recreation, Entertainment and Livability

The world-renowned Mammoth Cave is located 45 miles north of Scottsville, Dale Hollow Reservoir is 40 miles distant, and Old Hickory Lake is 20 miles away, all of which have excellent recreational facilities. Barren River Reservoir, 10 miles northeast of Scottsville, has a 23,000-acre lake with all water sports available.

Western Kentucky University, located in Bowling Green, offers nine months of sports, lectures, art exhibits, and concerts.

## THE LABOR MARKET

### POPULATION TRENDS 1/

| Area              | 1969 (Est.) | 1960    | 1950    | Percent Change |         |
|-------------------|-------------|---------|---------|----------------|---------|
|                   |             |         |         | 1960-69        | 1950-60 |
| Labor Market Area | 114,000     | 109,410 | 110,454 | +4.2           | - 0.9   |
| Allen County      | 12,200      | 12,269  | 13,787  | -0.6           | - 11.0  |
| Scottsville       | NA          | 3,324   | 2,060   |                | +61.4   |

### GENERAL EMPLOYMENT CHARACTERISTICS 2/

| Major Employment Group | 1968         |                   |
|------------------------|--------------|-------------------|
|                        | Allen County | Labor Market Area |
| TOTAL                  | 4,516        | 48,644            |
| Agricultural           | 1,325        | 9,462             |
| Nonagricultural        | 3,191        | 39,182            |
| Manufacturing          | 849          | 11,741            |
| Trade and Services     | 753          | 9,906             |
| Government             | 495          | 6,724             |
| Other                  | 1,094        | 10,811            |

### MANUFACTURING EMPLOYMENT TRENDS BY INDUSTRY SEPTEMBER 1959 AND 1968 3/

| Industry                              | Allen County |      |          | Labor Market Area |       |          |
|---------------------------------------|--------------|------|----------|-------------------|-------|----------|
|                                       | 1968         | 1959 | % Change | 1968              | 1959  | % Change |
| TOTAL                                 | 849          | 563  | + 50.8   | 11,741            | 5,733 | + 104.8  |
| Food & Kindred Products               | 5            | 4    | + 25.0   | 923               | 838   | + 10.1   |
| Tobacco                               | 0            | 0    |          | 128               | 125   | + 2.4    |
| Apparel, Textiles,<br>Leather         | 361          | 403  | - 10.4   | 3,302             | 2,055 | + 60.7   |
| Lumber & Furniture                    | 475          | 151  | +214.6   | 1,035             | 544   | + 90.3   |
| Printing, Publishing,<br>Paper        | 8            | 5    | + 60.0   | 183               | 114   | + 60.5   |
| Chemicals, Petroleum,<br>Coal, Rubber | 0            | 0    |          | 787               | 22    | + 3477.3 |
| Stone, Clay & Glass                   | 0            | 0    |          | 60                | 50    | + 20.0   |
| Machinery & Metal<br>Products         | 0            | 0    |          | 5,300             | 1,985 | + 167.0  |

SCOTTSVILLE MANUFACTURING FIRMS,  
THEIR PRODUCTS AND EMPLOYMENT 4/

| Firm                                    | Product                         | Employment |        |       |
|-----------------------------------------|---------------------------------|------------|--------|-------|
|                                         |                                 | Male       | Female | Total |
| Allen County Feed & Seed                | Feed                            | 3          | 0      | 3     |
| Allen County News                       | Newspaper, job<br>printing      | 6          | 2      | 8     |
| Bryant Lumber Co.                       | Lumber                          | 34         | 1      | 35    |
| The Citizens Times                      | Newspaper                       | 3          | 3      | 6     |
| Orvill Clark Lumber Co.                 | Lumber                          | 30         | 0      | 30    |
| E. L. Bruce & Co., Inc.                 | Hardwood flooring               | 40         | 0      | 40    |
| Kentucky Pallet Co.                     | Pallets                         | 30         | 2      | 32    |
| Scotscraft, Inc.                        | Drapery hardware<br>accessories | 68         | 156    | 224   |
| Scottsville Ready Mix                   | Concrete                        | 3          | 0      | 3     |
| Washington Overall<br>Manufacturing Co. | Men's and boys'<br>trousers     | 60         | 315    | 375   |
| Marvin Wood Lumber Co.                  | Lumber, furniture<br>dimension  | 59         | 1      | 60    |
| Woodmaster, Inc.                        | Wood folding doors              | 118        | 2      | 120   |





KENTUCKY PALLET CORP.



WOODMASTER, INC.

WAGE RATES FOR SELECTED OCCUPATIONS  
SCOTTSVILLE, KENTUCKY 5/

| Classification                        | Wages Per Hour |         |            |
|---------------------------------------|----------------|---------|------------|
|                                       | Starting       | Maximum | Prevailing |
| <u>Production Employees</u>           |                |         |            |
| Assembler                             | \$1.75         | \$2.35  | \$2.05     |
| Inspector                             | 1.80           | 2.30    | 2.27       |
| Production Laborer                    | 1.70           | 2.20    | 1.86       |
| Welder, Arc or Acetylene<br>(Class-A) | 1.83           | 2.51    | 3.46       |
| <u>Service Employees</u>              |                |         |            |
| Electrician (Class-A)                 | \$2.96         | \$4.77  | \$2.96     |
| Laborer                               | 1.60           | 2.97    | 2.87       |
| Machinist                             | 2.05           | 4.00    | 2.40       |
| Mechanic, Maintenance                 | 1.60           | 3.25    | 2.59       |
| Truck Driver, Industrial<br>(Class-A) | 2.05           | 3.38    | 2.40       |
| <u>Office Employees</u>               |                |         |            |
| Bookkeeper                            | \$1.60         | \$2.00  | \$1.60     |
| File Clerk                            | 1.60           | 2.00    | 1.60       |
| Receptionist                          | 1.60           | 1.70    | 1.60       |
| Secretary                             | 1.60           | 2.25    | 2.00       |
| Typist                                |                | 1.90    |            |

LABOR ORGANIZATIONS

| <u>Union</u>                                                                 | <u>Representing Workers at:</u>      |
|------------------------------------------------------------------------------|--------------------------------------|
| International Association of<br>Machinists & Aerospace Workers<br>Machinists | Scotscraft, Inc.<br>Woodmaster, Inc. |

CURRENT AND FUTURE LABOR SUPPLY -  
SCOTTSDALE LABOR MARKET AREA

| County            | Current Labor Supply<br>1969 <sup>6/</sup> |       |        | Future Labor Supply by 1975 <sup>7/</sup><br>(Becoming 18 Years of Age) |       |        |
|-------------------|--------------------------------------------|-------|--------|-------------------------------------------------------------------------|-------|--------|
|                   | Total                                      | Male  | Female | Total                                                                   | Male  | Female |
| Labor Market Area | 4,672                                      | 3,186 | 1,486  | 10,712                                                                  | 5,479 | 5,233  |
| Allen             | 859                                        | 575   | 284    | 1,042                                                                   | 519   | 523    |
| Barren            | 1,500                                      | 868   | 632    | 2,826                                                                   | 1,448 | 1,378  |
| Monroe            | 900                                        | 666   | 234    | 1,189                                                                   | 649   | 540    |
| Simpson           | 313                                        | 197   | 116    | 1,104                                                                   | 559   | 545    |
| Warren            | 1,100                                      | 880   | 220    | 4,551                                                                   | 2,304 | 2,247  |

TOTAL PERSONAL INCOME <sup>8/</sup>

| Area              | 1968          | 1959          | % Change |
|-------------------|---------------|---------------|----------|
| Allen County      | \$ 21,626,000 | \$ 11,927,000 | + 81.3   |
| Labor Market Area | 279,522,000   | 132,527,000   | + 110.9  |
| Kentucky          | 8,360,000,000 | 4,655,000,000 | + 79.6   |

PER CAPITA PERSONAL INCOME

| Area              | 1968              | 1959            | % Change        |
|-------------------|-------------------|-----------------|-----------------|
| Allen County      | \$1,773           | \$1,001         | +77.1           |
| Labor Market Area | \$ 1,773 to 2,607 | \$ 788 to 1,431 | +125.0 to +82.2 |
| Kentucky          | 2,614             | 1,552           | +68.4           |

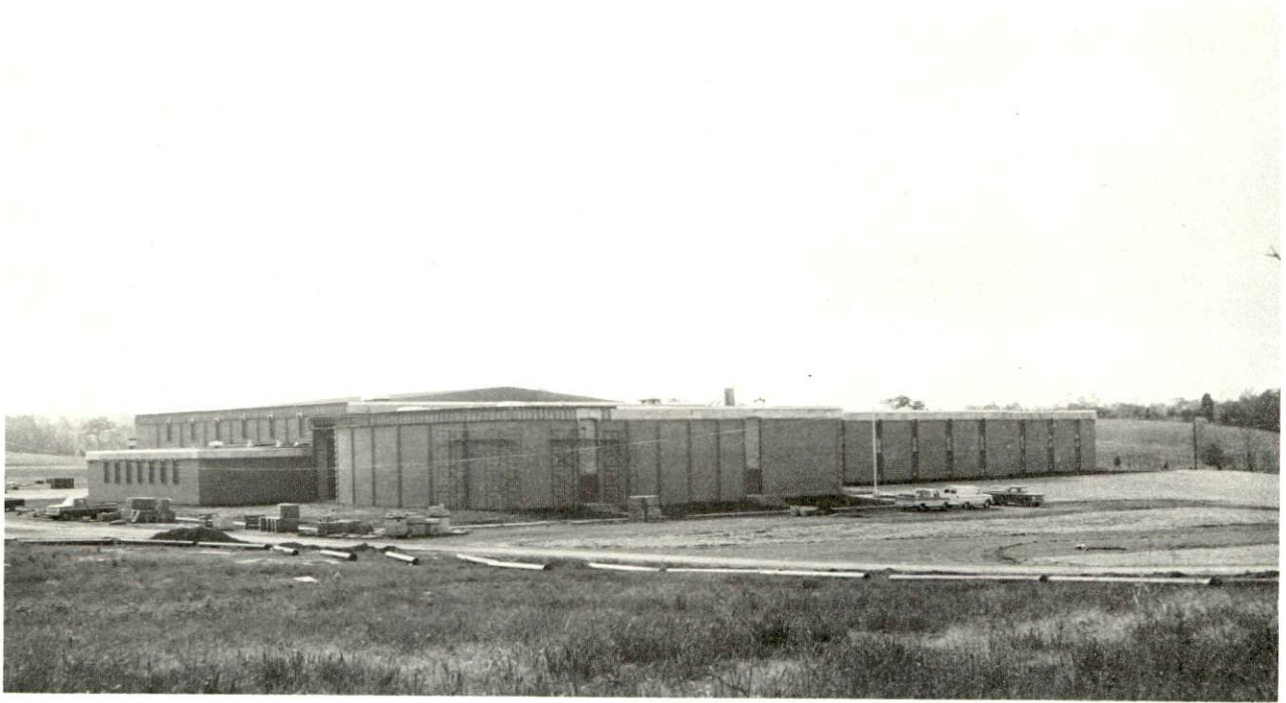
## EDUCATION

### Public Schools

|                                             | <u>Scottsville Independent</u> | <u>Allen County</u> |
|---------------------------------------------|--------------------------------|---------------------|
| Total Enrollment                            | 580                            | 2,084               |
| Elementary                                  | 313                            | 1,302               |
| High School                                 | 267                            | 782                 |
| Student-Teacher Ratio                       | 18-1                           | 26-1                |
| Elementary                                  | 19-1                           | 27-1                |
| High School                                 | 16-1                           | 23-1                |
| State Rating of High School                 | Standard                       | Standard            |
| Percent High School Graduates<br>to College | 61.1                           | 41.8                |
| Current Expenditures Per<br>Pupil           | \$425.09                       | \$364.73            |
| Bonded Indebtedness                         | \$110,000                      | \$2,024,000         |

### Vocational Schools

|               | <u>Nearest Area<br/>School</u>                                                                                                                                                                                                                                                                                       | <u>Nearest Extension<br/>Center</u>                                                                                |
|---------------|----------------------------------------------------------------------------------------------------------------------------------------------------------------------------------------------------------------------------------------------------------------------------------------------------------------------|--------------------------------------------------------------------------------------------------------------------|
| Location      | Bowling Green                                                                                                                                                                                                                                                                                                        | Scottsville                                                                                                        |
| Miles Distant | 25                                                                                                                                                                                                                                                                                                                   |                                                                                                                    |
| Curriculum    | General Clerical<br>Dental Assistant<br>Health Careers<br>Nurse Aide<br>O. B. Technician<br>Practical Nursing<br>Surgical Technician<br>Ward Clerk<br>Distributive Education<br>Electronics<br>Highway Technology<br>Technical Drafting<br>Air-Conditioning &<br>Refrigeration<br>Auto Body Repair<br>Auto Mechanics | General Clerical<br>Secretarial-Steno<br>Auto Mechanics<br>Carpentry<br>Drafting<br>Electricity<br>Jr. Acct. Mgmt. |



ALLEN COUNTY HIGH SCHOOL



ALLEN COUNTY VOCATIONAL SCHOOL

Nearest Area  
School (Cont'd.)

Carpentry  
Welding  
Commercial Foods  
Drafting  
Tool & Die Making  
Electricity  
Machine Shop  
Office Machine Repair  
Printing  
Radio & TV Repair  
Small Engine Repair

Colleges and Universities

| <u>Name</u>                    | <u>Area - Within 25 miles</u> |                   | <u>Highest Degree<br/>Conferred</u> |
|--------------------------------|-------------------------------|-------------------|-------------------------------------|
|                                | <u>Location</u>               | <u>Enrollment</u> |                                     |
| Western Kentucky<br>University | Bowling Green                 | 10,570            | Masters                             |

## TRANSPORTATION

### Rail

Lines serving - Louisville & Nashville Railroad

Services - Freight, switching, siding

### RAILWAY TRANSIT TIME FROM SCOTTSVILLE, KENTUCKY, TO: 10/

| City             | No. of Days |  | City                | No. of Days |  |
|------------------|-------------|--|---------------------|-------------|--|
|                  | CL          |  |                     | CL          |  |
| Atlanta, Ga.     | 3           |  | Los Angeles, Calif. | 5           |  |
| Birmingham, Ala. | 3           |  | Louisville, Ky.     | 3           |  |
| Chicago, Ill.    | 4           |  | Nashville, Tenn.    | 2           |  |
| Cincinnati, Ohio | 3           |  | New Orleans, La.    | 4           |  |
| Cleveland, Ohio  | 5           |  | New York, N. Y.     | 6           |  |
| Detroit, Mich.   | 6           |  | Pittsburgh, Pa.     | 5           |  |
| Knoxville, Tenn. | 4           |  | St. Louis, Mo.      | 3           |  |

### Truck Service 11/

#### Company

Dixie Highway Express, Inc.  
Manning Motor Express, Inc.  
McLean Trucking Co.  
Skaggs Transfer, Inc.  
Theatres Service Co.

#### Home Office

Meridian, Mississippi  
Glasgow, Kentucky  
Winston-Salem, North Carolina  
Louisville, Kentucky  
Atlanta, Georgia

HIGHWAY MILES AND TRUCK TRANSIT TIME IN DAYS FROM  
SCOTTSVILLE, KENTUCKY, TO SELECTED MARKET CENTERS

| City             | Highway<br>Miles | Delivery<br>Time <u>11/</u> |    | City                | Highway<br>Miles | Delivery<br>Time |     |
|------------------|------------------|-----------------------------|----|---------------------|------------------|------------------|-----|
|                  |                  | LTL                         | TL |                     |                  | LTL              | TL  |
| Atlanta, Ga.     | 322              | 3                           | 2  | Los Angeles, Calif. | 2,227            | 5-6              | 4   |
| Birmingham, Ala. | 285              | 3                           | 2  | Louisville, Ky.     | 120              | 1                | 1   |
| Chicago, Ill.    | 420              | 3                           | 2  | Nashville, Tenn.    | 65               | 2                | 2   |
| Cincinnati, Ohio | 235              | 3                           | 2  | New Orleans, La.    | 287              | 5-6              | 3-4 |
| Cleveland, Ohio  | 479              | 3                           | 2  | New York, N. Y.     | 890              | 3                | 2   |
| Detroit, Mich.   | 490              | 3                           | 2  | Pittsburgh, Pa.     | 525              | 2                | 2   |
| Knoxville, Tenn. | 207              | 3                           | 2  | St. Louis, Mo.      | 393              | 2                | 2-3 |

Air

|                  | <u>Local</u>          | <u>Nearest Commercial</u>                                                                                                                              |
|------------------|-----------------------|--------------------------------------------------------------------------------------------------------------------------------------------------------|
| Location:        | Scottsville (private) | Bowling Green                                                                                                                                          |
| Runways:         | 1 turf                | 2 paved                                                                                                                                                |
| Length:          |                       | 4,000 ft. ; 5,250 ft.                                                                                                                                  |
| Traffic Control: |                       | Wind tee                                                                                                                                               |
| Lighting:        |                       | Runways, obstructions,<br>beacons and wind tee<br>until midnight                                                                                       |
| Services:        |                       | 80 and 100 octane, jet<br>A-50, storage, minor<br>A&E repairs, FAA<br>flight service station,<br>taxi, rental cars,<br>restaurant, Eastern<br>Airlines |

Bus

Southern Greyhound, Continental Trailways

Taxi

24-hour service, seven days a week



## POWER AND FUEL

### Electricity

Company serving Scottsville and Allen County - Tri-County Electric Membership Corporation  
Source of power - Tennessee Valley Authority  
Total generating capacity - 18,202,090 KW  
Industrial rates negotiated by - Tri-County Electric Membership Corporation, Scottsville, Kentucky

### Natural Gas

Company serving - Scottsville Natural Gas Company  
Source of supply - Texas Gas Transmission Corporation  
Size of transmission lines - 4-inch  
Distribution lines - 2, 3, and 4 inches  
BTU content - 1,015; Specific gravity - 0.597  
Distribution pressure - 15 to 20 psi

### Rates:

Minimum Monthly Charge \$1.85

|                |                 |                       |
|----------------|-----------------|-----------------------|
| First          | 5,000 cu. ft.   | \$1.026 per M cu. ft. |
| Next           | 5,000 cu. ft.   | .926 per M cu. ft.    |
| Next           | 5,000 cu. ft.   | .826 per M cu. ft.    |
| Next           | 10,000 cu. ft.  | .726 per M cu. ft.    |
| Next           | 225,000 cu. ft. | .676 per M cu. ft.    |
| All additional |                 | .590 per M cu. ft.    |

## WATER AND SEWERAGE

### Water

Company serving - Scottsville Water Company  
Source - Spring  
Treatment plant capacity - 720,000 gpd  
Average daily consumption - 550,000 gallons  
Type treatment - chlorination and fluoridation  
Storage capacity - 700,000 gallons  
Average pressure - 60 psi  
Size mains - 12, 10, 8, and 6 inches

### MONTHLY WATER RATES FOR WHOLESALE AND INDUSTRIAL CONSUMERS

| <u>Number of Gallons Per Month</u> |                       | <u>Rate Per Month</u>  |
|------------------------------------|-----------------------|------------------------|
| First                              | 2,000 gallons or less | \$3.00 Minimum         |
| Next                               | 2,000 gallons         | 1.00 per 1,000 gallons |
| Next                               | 4,000 gallons         | .80 per 1,000 gallons  |
| Next                               | 12,000 gallons        | .70 per 1,000 gallons  |
| All over                           | 20,000 gallons        | .45 per 1,000 gallons  |

Surface water sources - Barren River, West Bays Fork  
Average discharge - 841 cfs, 10.2 cfs  
Expected ground water yield - The expected yield of ground water in Allen County, with exception of the northwestern border and a band extending from the north to the central part of the state, is 5 gpm or less.  
Yield along main streams - The expected yields for the remaining portions are 50-200 and 5-50 gpm, respectively, and could be considered as a potential for industrial water supplies. Exceptions may be found in restricted areas.

### Sewerage

Company serving - municipal  
Design capacity - 750,000 gpd  
Average daily flow - 300,000 gallons  
Treatment - clarifier, digester, filter, drying beds  
Type treatment - primary and secondary  
Treated effluent discharged into - Bays Fork Creek  
Size of sanitary mains - 10-inch  
Rates - 75 percent of water bill, up to and including 20,000 gallons;  
all over 20,000 gallons is \$0.45 per thousand gallons

## LOCAL GOVERNMENT

### City

Structure - Mayor - 4-year term; 6 councilmen - 2-year terms  
 Budget 1968 - General Income Fund \$149,384; Water and Sewer Fund  
 \$174,812

Fees and licenses - Scottsville requires a business and occupational  
 license. Fees range from \$5 to \$50 annually.

### County

Structure - County judge - 4-year term; 5 magistrates - 4-year terms  
 Budget 1969-70 - General Fund \$113,400; Road Fund \$31,400

### Assessed Value of Property - 1969

| <u>Classes of Property*</u> | <u>Allen County</u> |
|-----------------------------|---------------------|
| Real Estate                 | \$43,927,698        |
| Personal                    | 11,248,690          |
| Public Service              | 11,084,466          |

### Local General Property Tax Rates Per \$100 of Assessed Valuation - 1969 <sup>12/</sup>

| <u>Taxing Unit**</u> | <u>Scottsville</u> | <u>Allen County</u> |
|----------------------|--------------------|---------------------|
| State                | \$ .015            | \$ .015             |
| County               | .222               | .222                |
| School               | .571               | .628                |
| City                 | .250               |                     |
| Total                | \$ 1.058           | \$ .865             |

\*Property assessed at 100 percent of fair value.

\*\*Manufacturing machinery, raw materials inventories and goods in  
 process inventories are not subject to local tax. State rate is only  
 \$0.15 per \$100.

Safety

| <u>Police</u>     | <u>Scottsville</u>            | <u>Allen County</u> |
|-------------------|-------------------------------|---------------------|
| Total staff       | 8                             | 3                   |
| Radio-patrol cars | 1                             | 2                   |
| Other equipment   | Walkie-talkie<br>breathalyzer |                     |

Fire

|                                               |    |    |
|-----------------------------------------------|----|----|
| American Insurance<br>Association Fire Rating | 6  | 6  |
| Volunteers                                    | 16 | 16 |
| Equipment:                                    |    |    |
| 500-gpm pumpers                               | 2  | 1  |
| 750-gpm pumpers                               | 1  |    |

Rescue Service

Civil Defense Rescue Squad:  
Number of volunteers - 15 to 20  
Equipment - truck, walkie-talkie  
Personnel training - first aid

Sanitation

|                      | <u>Scottsville</u>                                    | <u>Allen County</u> |
|----------------------|-------------------------------------------------------|---------------------|
| Type service         | municipal                                             | private contract    |
| Cost                 | \$5 per month for<br>business                         | private contract    |
|                      | \$2 per month for<br>residential                      |                     |
| Collection frequency | daily for business<br>twice a week for<br>residential |                     |
| Trash pickup         | on contract                                           | private contract    |
| Disposal method      | land fill                                             | land fill           |

HEALTH

Hospitals

|                                                                                                                       | <u>Number</u> | <u>Beds</u> |
|-----------------------------------------------------------------------------------------------------------------------|---------------|-------------|
| General hospital - Allen County<br>War Memorial Hospital                                                              | 1             | 46          |
| General hospital facilities - operating room, X-ray, laboratory,<br>maternity ward, recovery room                     |               |             |
| Medical staff - 5 doctors, 10 registered nurses, 7 graduate licensed<br>practical nurses, 9 licensed practical nurses |               |             |

Nursing Homes

|                     | <u>Number</u> | <u>Beds</u> |
|---------------------|---------------|-------------|
| Personal care homes | 4             | 128         |

Public Health

Facility - Allen County Health Department  
Staff - Sanitarian, clerk, nurse  
Budget 1968-69 - \$24,035

## OTHER LOCAL FACILITIES

### Communications

Telephone - General Telephone Company  
Services - Standard

Telegraph - Western Union  
Services - telephone and mail

Postal - Class-1 U. S. Post Office  
Mail received - twice daily  
Mail dispatched - twice daily

|                                      |                   |
|--------------------------------------|-------------------|
| Newspaper Weeklies - Citizens - Time | Allen County News |
| Circulation 2,800                    | 2,475             |

Radio  
Stations received from - Nashville, Tennessee; Louisville, Kentucky

Television  
Cable Service - antennae  
Reception from - Nashville, Tennessee; Bowling Green and Louisville,  
Kentucky  
Kentucky Educational Television - Channel 53, Bowling Green, Kentucky  
Tennessee Educational Television-Channel 2, Nashville, Tennessee

### Library Services

Public libraries - Allen County Library  
Size collection - 14,000 volumes  
Circulation, 1968 - 80,000 to 90,000  
Services - magazines, records, story hour, pictures, projector,  
games supplied to nursing homes

### Religious Institutions

Number of churches - 6  
Denominations - Baptist, Catholic, Church of Christ, Church of God,  
Methodist and Nazarene

Financial Institutions

| <u>Bank</u>           | <u>Statement as of December 31, 1968</u> |                 |
|-----------------------|------------------------------------------|-----------------|
|                       | <u>Assets</u>                            | <u>Deposits</u> |
| Kentucky State Bank   | \$ 6,851,949.28                          | \$ 6,260,346.94 |
| Farmers National Bank | 14,810,562.34                            | 14,121,650.38   |

Hotels and Motels

| <u>Number</u> | <u>Units or Rooms</u> |
|---------------|-----------------------|
| 6             | 139                   |

Clubs and Organizations

Business and Civic - Rotary, Lions, Jaycees, Chamber of Commerce

Fraternal - Masonic, VFW, American Legion

Women's - Homemakers, Garden Club, Mothers Club, Eastern Star,  
DAR, Business and Professional Woman's Club

Youth - Boy Scouts, Girl Scouts, Brownies, Cub Scouts, FFA, FHA,  
4-H, Little League, Rainbow Girls



FARMERS NATIONAL BANK



KENTUCKY STATE BANK



## RECREATION

### Local

#### Public Recreation Facilities

Supervised program - Youth, Incorporated

Parks - 1

Playgrounds - 4

Tennis courts - 1

Baseball diamonds - 1

Football fields - 1

Other - picnic grounds

#### Private Recreation Facilities

Country clubs - 1

Golf courses - 1

Swimming pools - 1

Movie theaters - 1 indoor, 1 outdoor

Bowling lanes - 1

### Area (Within 25 miles)

Barren River Reservoir - 23,000-acre lake with many recreational facilities

Old Hickory Lake

AGRICULTURE - NATURAL RESOURCES - CLIMATE

Agriculture 13/

|                                        | <u>Allen County</u> | <u>Labor Market Area</u> |
|----------------------------------------|---------------------|--------------------------|
| Total land area (acres)                | 232,960             | 1,114,880                |
| Percent of area in farm land           | 78                  | 85                       |
| Number of farms                        | 1,745               | 7,934                    |
| Average size of farms (acres)          | 79                  | 106                      |
| 1964 value of all farm products        | \$4,930,982         | \$42,081,194             |
| Value per farm                         | 2,826               | 4,503                    |
| Total crop sales                       | 2,429,684           | 20,076,635               |
| Total livestock & livestock products   | 2,500,997           | 23,742,729               |
| 1967 agricultural production included: |                     |                          |
| Burley tobacco (lbs.)                  | 3,100,000           | 22,152,000               |
| Corn (bu.)                             | 732,000             | 6,061,000                |
| Cattle and calves (number)             | 34,600              | 922,800                  |
| Hogs and pigs (number)                 | 19,400              | 134,800                  |
| Milk production (1966) (lbs.)          | 36,900,000          | 307,545,000              |

Natural Resources

|                                 |                                                                            |
|---------------------------------|----------------------------------------------------------------------------|
| Principal mineral resources     | Petroleum and limestone                                                    |
| Other mineral resources         | Gravel, clay, natural gas                                                  |
| Acres of commercial forest land | 83,500                                                                     |
| Most abundant tree species      | Red oaks, white oaks, hickories, yellow poplar, ash, beech, and hard maple |

Climate 14/

|                                                     |              |
|-----------------------------------------------------|--------------|
| Temperature (30-year record)                        |              |
| Annual mean                                         | 60.0°        |
| Average annual 1968                                 | 57.3°        |
| Record highest September, 1966                      | 103.0°       |
| Record lowest January, 1966                         | - 6.0°       |
| Mean annual degree-days                             | 3,578        |
| Precipitation (30-year record)                      |              |
| Mean annual total                                   | 45.14 inches |
| Mean annual snow and sleet                          | 11.3 inches  |
| Total precipitation 1968                            | 43.93 inches |
| Mean number days precipitation (.01 inches or more) | 117          |
| Average number days thunderstorms                   | 56           |
| Prevailing winds - south                            |              |

## HISTORY

Allen County, the fifty-seventh county established in Kentucky, dates from 1815. Its territory was taken from Barren and Warren Counties. Four years later it gave up lands to help form Simpson County. Its surface is generally hilly, its soil is fairly fertile, and timber grows throughout its area. Big Barren River forms about one-half of its eastern and all of its northern border.

Allen County was first settled in 1797 in the vicinity of Scottsville by Joseph Ficklin, Toliver Craig, Henry Collins, Daniel Monroe, and Abram Wood. As early as 1770, according to inscriptions found on beech trees, James McCall spent a night near Scottsville on the way to Natchez, Mississippi. Daniel Boone's initials were found carved on a tree with the date of 1777 beneath them. Some eight miles northeast of Scottsville a millsite that belonged to Ichabod Clark bore the date of 1779. The name of Joseph Boone was found on a tree near Claypool's Mill in the northwestern part of the county.

The county was named for Colonel John Allen, a native of Rockridge County, Virginia, who migrated to Kentucky in 1776 and settled near Danville. As a military leader, he was a man of undaunted courage; and as a Kentuckian, he was a fine specimen of the gentlemen of that day.

Scottsville, the county seat, was named for General Charles Scott who served on a military advisory board in Kentucky for President George Washington during the troubled period of the 1790's, commanded 1,600 mounted Kentucky volunteers in the Battle of Fallen Timber, August 30, 1794, in which the Indians were soundly whipped, and was elected Kentucky's fourth governor in 1808. Before the end of his term the people were in a general state of excitement over the impending crisis with England which erupted into a War in 1812. Scott responded slowly to the fever generated by Henry Clay and his War Hawks, but did call out 1,500 Kentucky volunteers after the war was declared for the relief of General William Hull at Detroit. The troops marched only as far as Georgetown from Lexington when it was learned that General Hull had surrendered Detroit without a fight. Kentuckians then refused to serve under Hull, and Governor Scott commissioned General William Henry Harrison as a major general of Kentucky and authorized him to take command of the Kentucky volunteers.

## SOURCES OF INFORMATION

- 1/ U. S. Department of Commerce, Bureau of the Census, Census of Population, 1950, 1960. Department of Rural Sociology, University of Kentucky, Kentucky County Provisional Population Estimates: January 1, 1969.
- 2/ Kentucky Department of Economic Security, Division of Research and Statistics.
- 3/ Kentucky Department of Economic Security, Number of Workers in Manufacturing Industries Covered by Unemployment Insurance Law Classified by Industry and County, September 1959, September, 1968.
- 4/ Kentucky Department of Commerce, 1970 Kentucky Directory of Manufacturers. Scottsville-Allen County Chamber of Commerce.
- 5/ Kentucky Department of Economic Security, Division of Employment Service, Bowling Green Office.
- 6/ Kentucky Department of Economic Security, Kentucky Labor Supply Estimates by County, January 1969.
- 7/ Kentucky Department of Commerce, Future Labor Supply by 1975.
- 8/ University of Kentucky, Office of Development Services and Business Research, Total Personal Income For Kentucky.
- 9/ University of Kentucky, Office of Development Services and Business Research, Per Capita Income in Kentucky.
- 10/ Louisville & Nashville Railroad, Louisville, Kentucky.
- 11/ Manning Motor Express, Inc., Glasgow, Kentucky.
- 12/ Farmer & Humble, Certified Public Accountants, 1969 Kentucky Tax Rate Schedule.
- 13/ U. S. Department of Commerce, Bureau of the Census, 1964 Census of Agriculture. U. S. Department of Agriculture and Kentucky Department of Agriculture, Kentucky Agricultural Statistics, 1968.
- 14/ U. S. Department of Commerce, Environmental Science Services Administration, Climatological Data, 1967.

All other information was obtained from governmental offices, local businesses and organizations.