

1973

Industrial Resources: Boone County - Northern Kentucky

Kentucky Library Research Collections
Western Kentucky University, spcol@wku.edu

Follow this and additional works at: https://digitalcommons.wku.edu/boone_cty

 Part of the [Business Administration, Management, and Operations Commons](#), [Growth and Development Commons](#), and the [Infrastructure Commons](#)

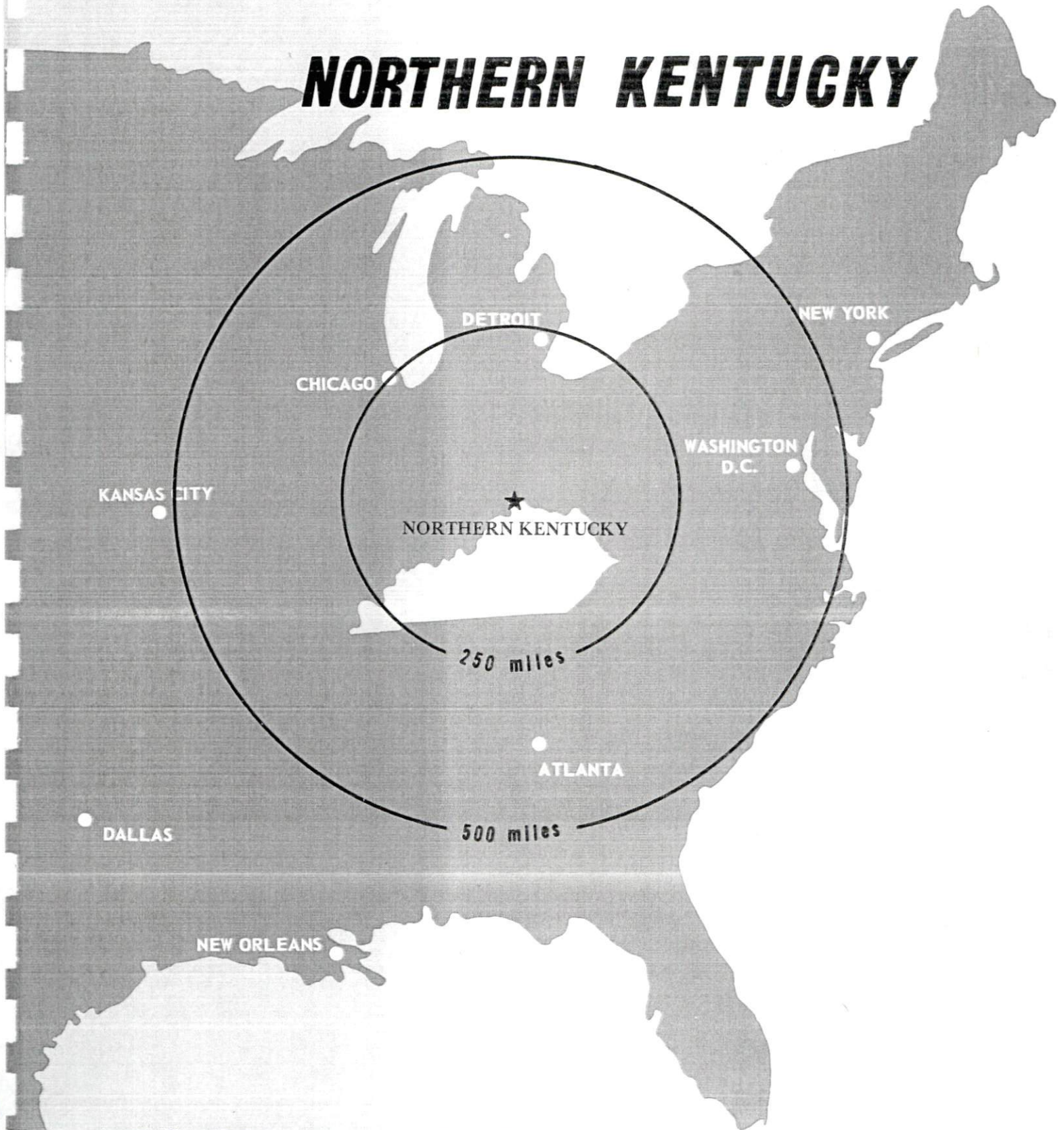
Recommended Citation

Kentucky Library Research Collections, "Industrial Resources: Boone County - Northern Kentucky" (1973). *Boone County*. Paper 6. https://digitalcommons.wku.edu/boone_cty/6

This Report is brought to you for free and open access by TopSCHOLAR®. It has been accepted for inclusion in Boone County by an authorized administrator of TopSCHOLAR®. For more information, please contact topscholar@wku.edu.

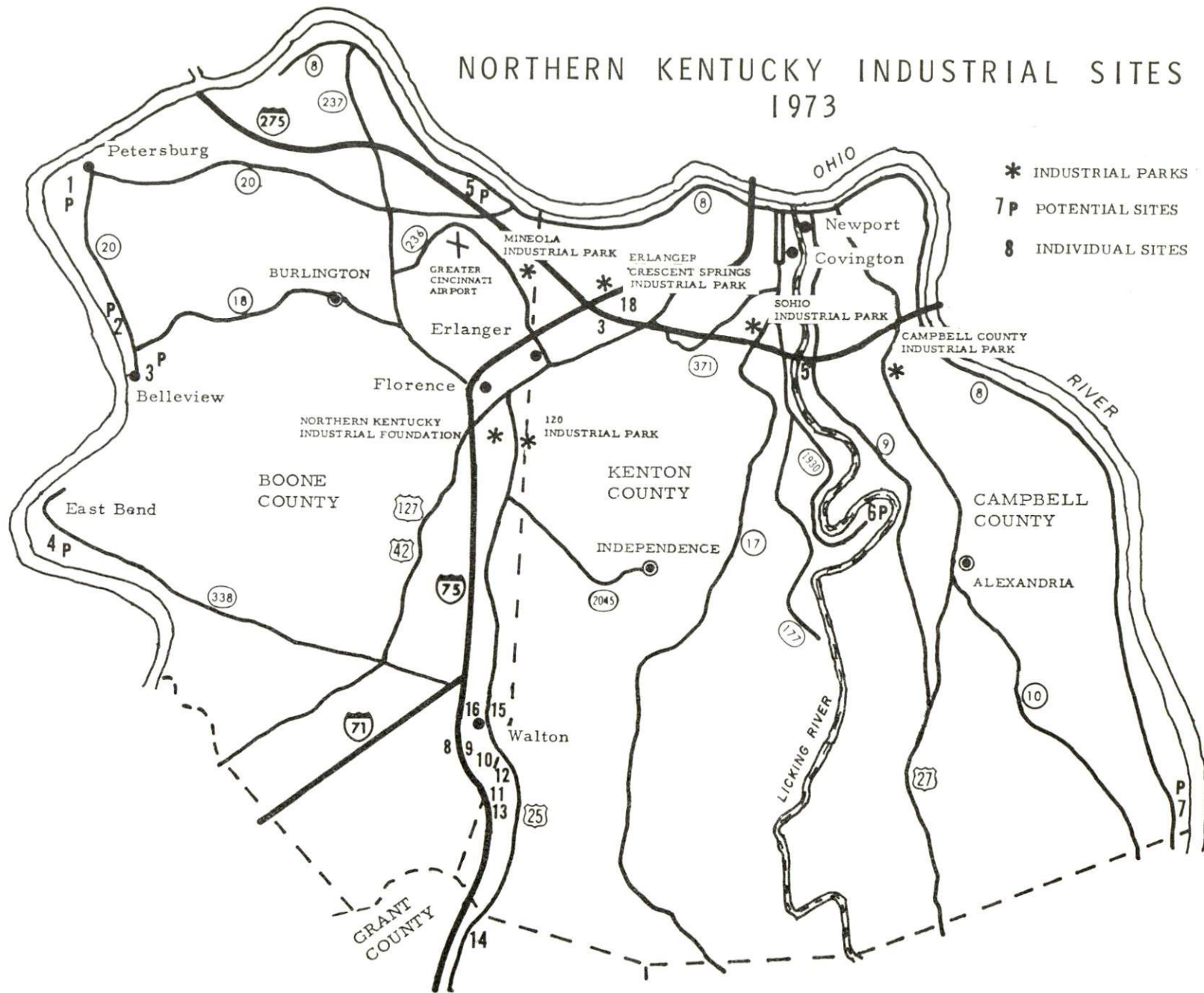
INDUSTRIAL RESOURCES

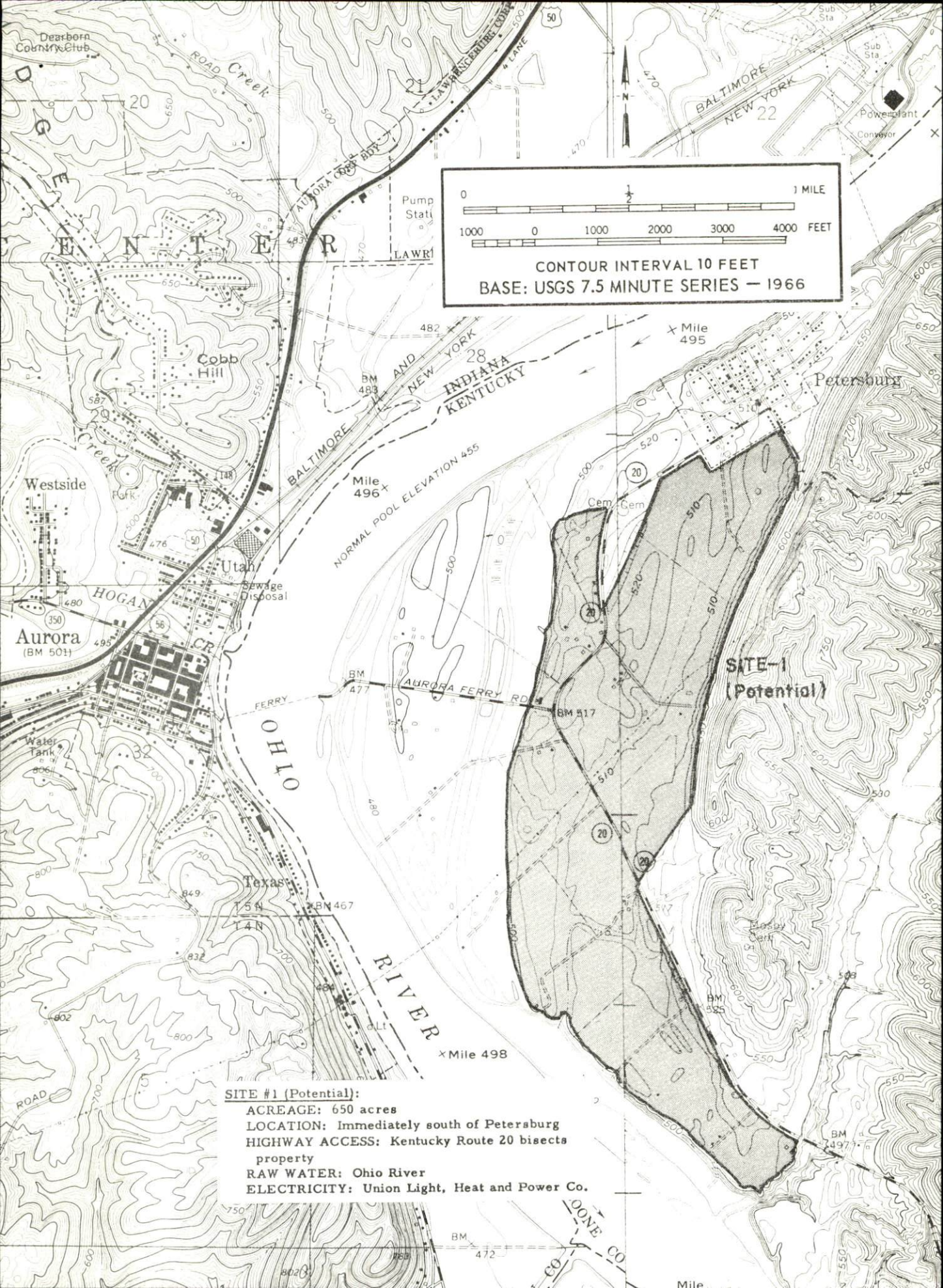
NORTHERN KENTUCKY



BOONE, KENTON, CAMPBELL COUNTIES, KENTUCKY

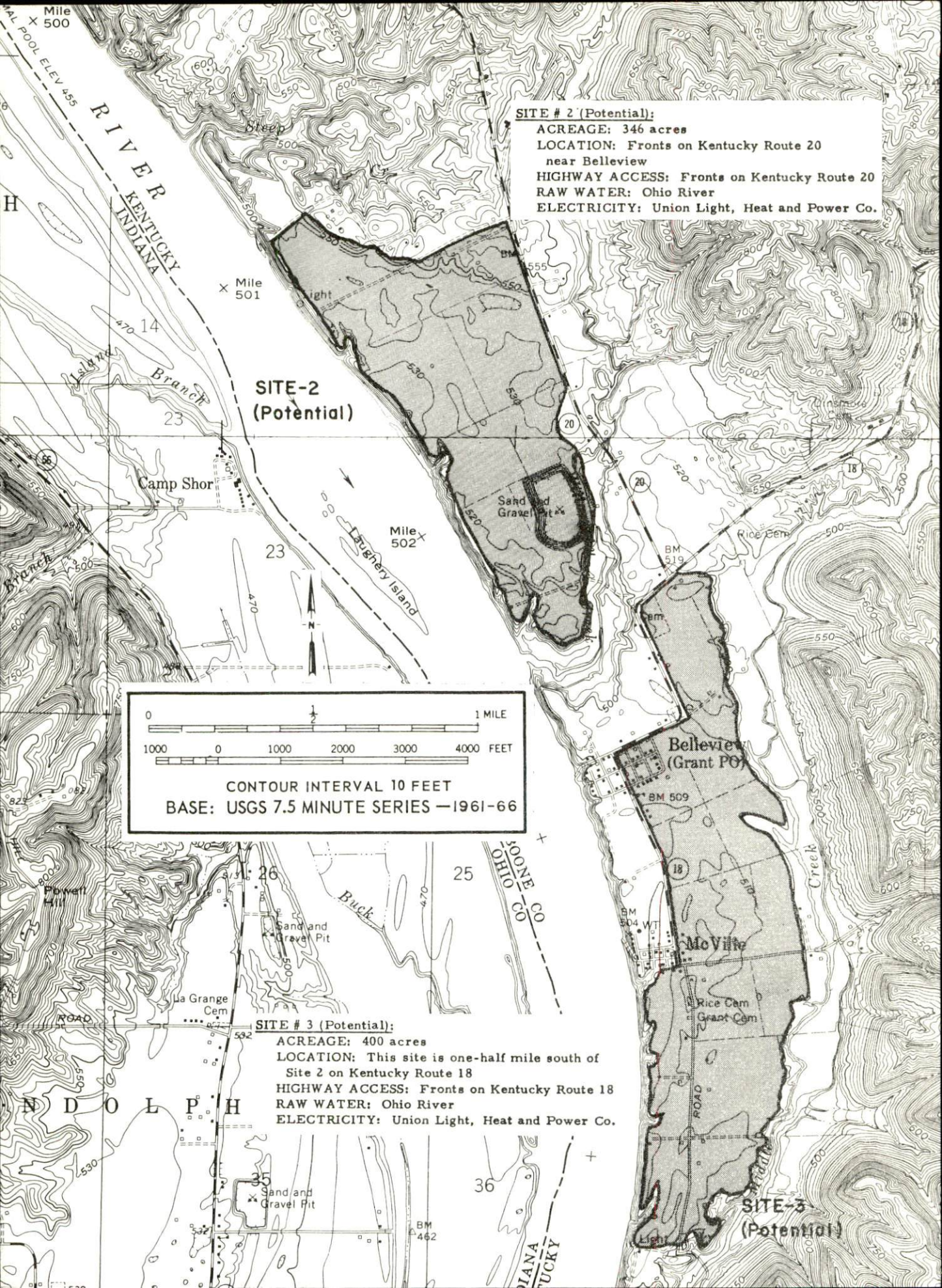
NORTHERN KENTUCKY INDUSTRIAL SITES 1973





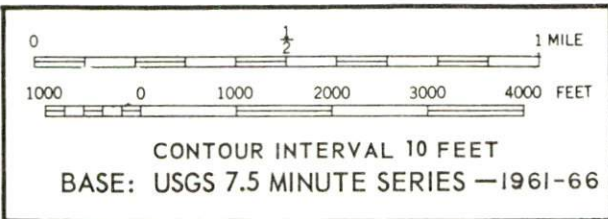
0 1/2 1 MILE
 1000 0 1000 2000 3000 4000 FEET
 CONTOUR INTERVAL 10 FEET
 BASE: USGS 7.5 MINUTE SERIES — 1966

SITE #1 (Potential):
ACREAGE: 650 acres
LOCATION: Immediately south of Petersburg
HIGHWAY ACCESS: Kentucky Route 20 bisects property
RAW WATER: Ohio River
ELECTRICITY: Union Light, Heat and Power Co.



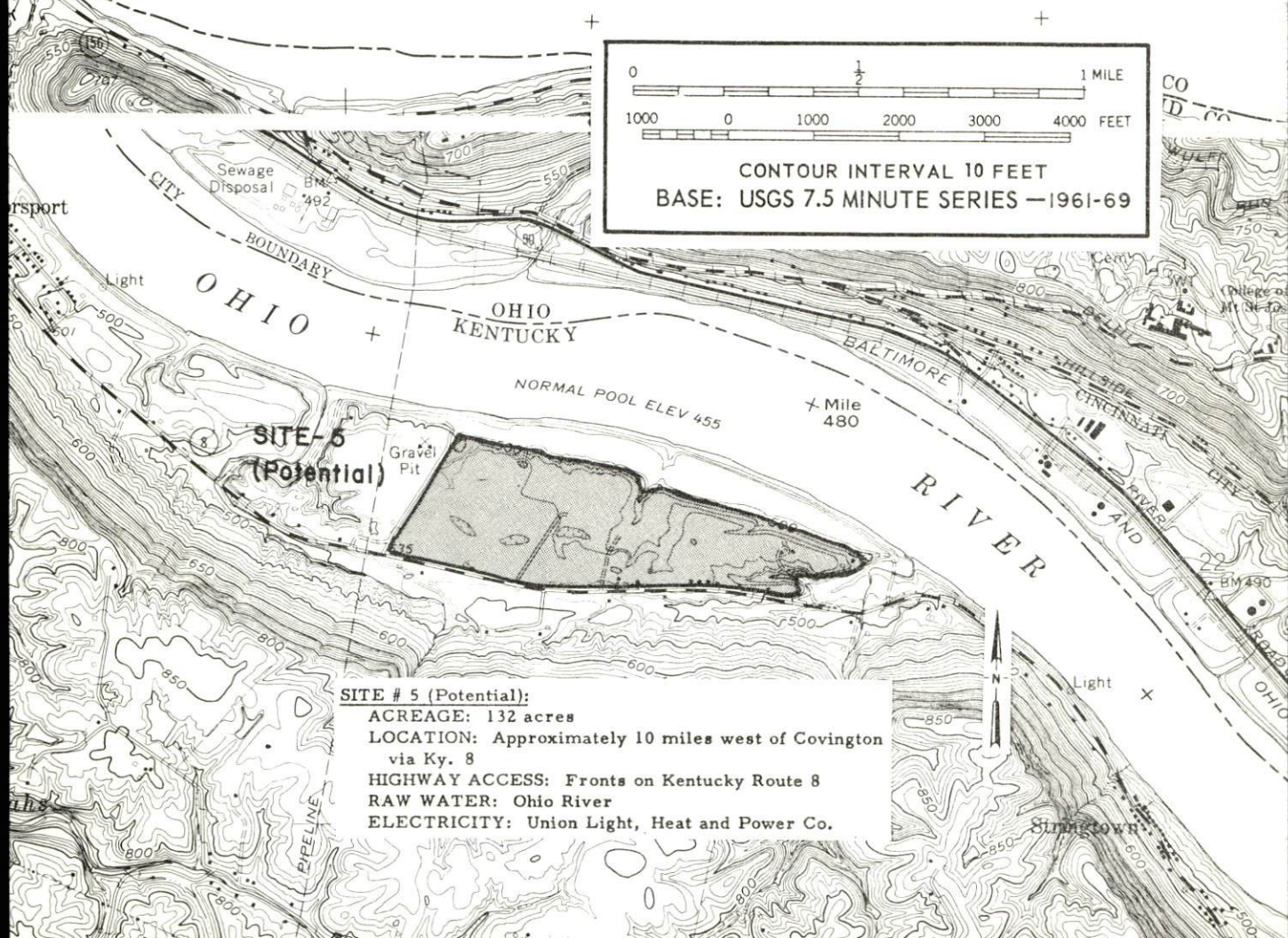
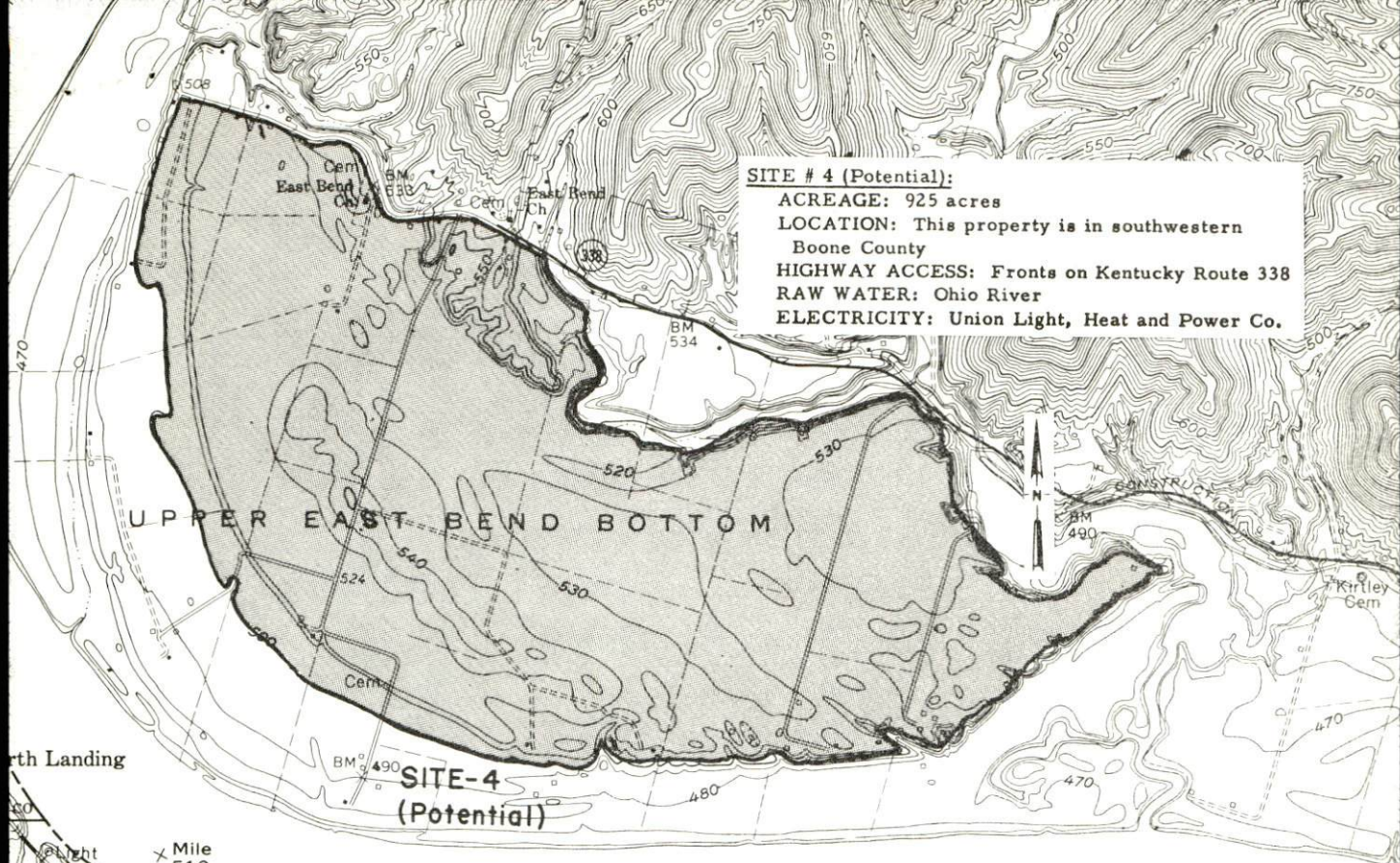
SITE # 2 (Potential):
ACREAGE: 346 acres
LOCATION: Fronts on Kentucky Route 20 near Belleview
HIGHWAY ACCESS: Fronts on Kentucky Route 20
RAW WATER: Ohio River
ELECTRICITY: Union Light, Heat and Power Co.

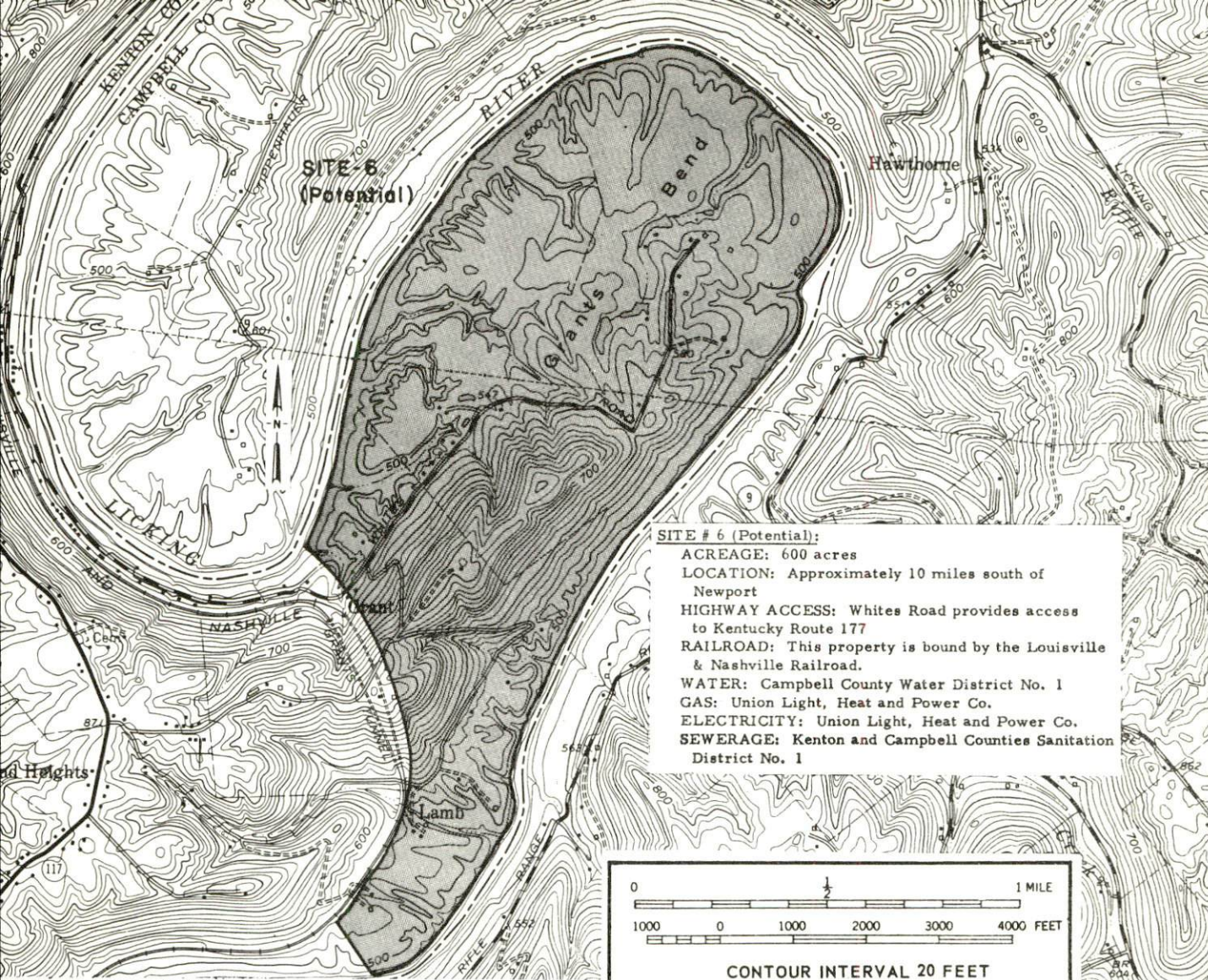
SITE-2 (Potential)



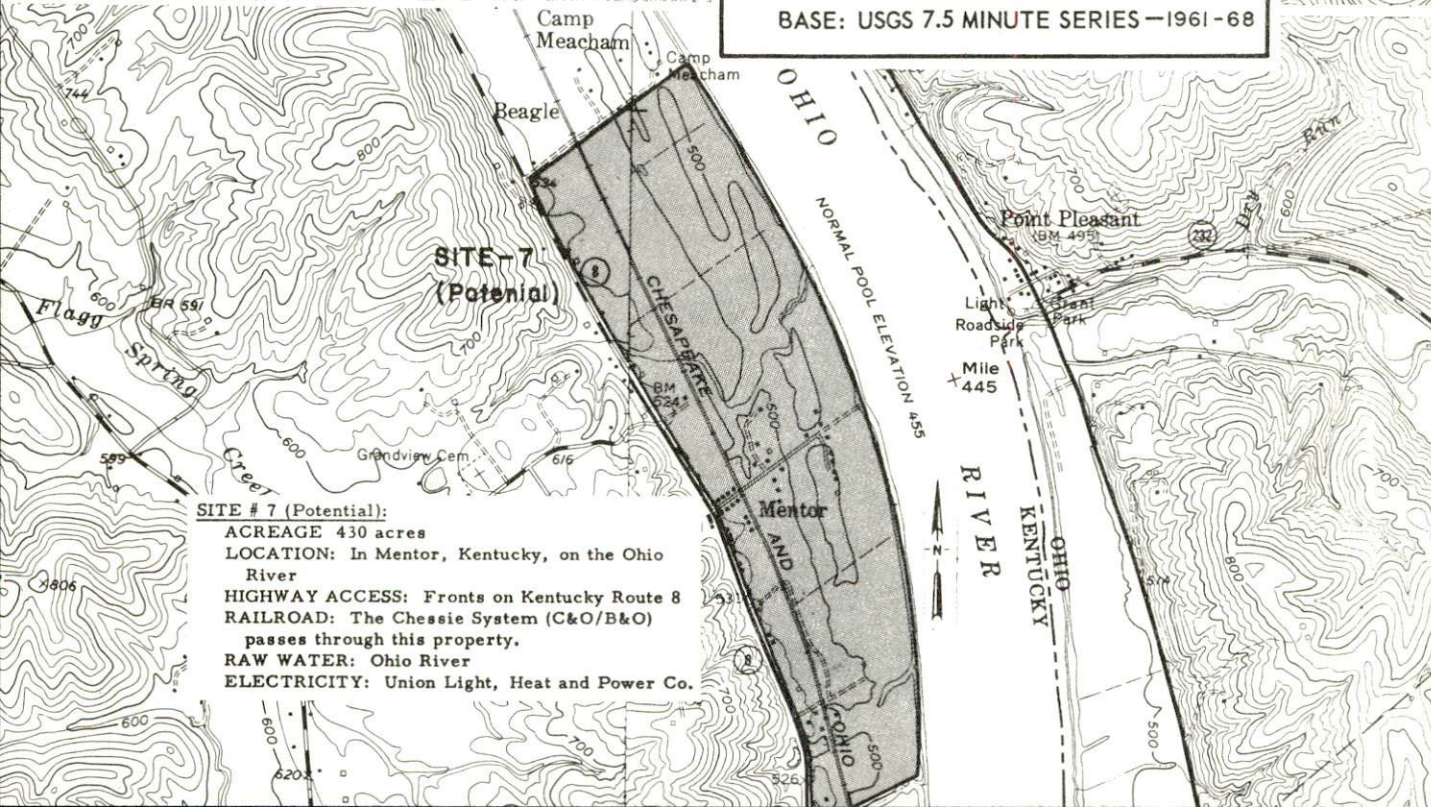
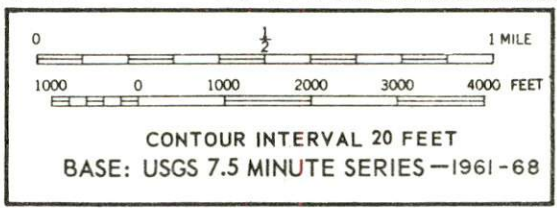
SITE # 3 (Potential):
ACREAGE: 400 acres
LOCATION: This site is one-half mile south of Site 2 on Kentucky Route 18
HIGHWAY ACCESS: Fronts on Kentucky Route 18
RAW WATER: Ohio River
ELECTRICITY: Union Light, Heat and Power Co.

SITE-3 (Potential)





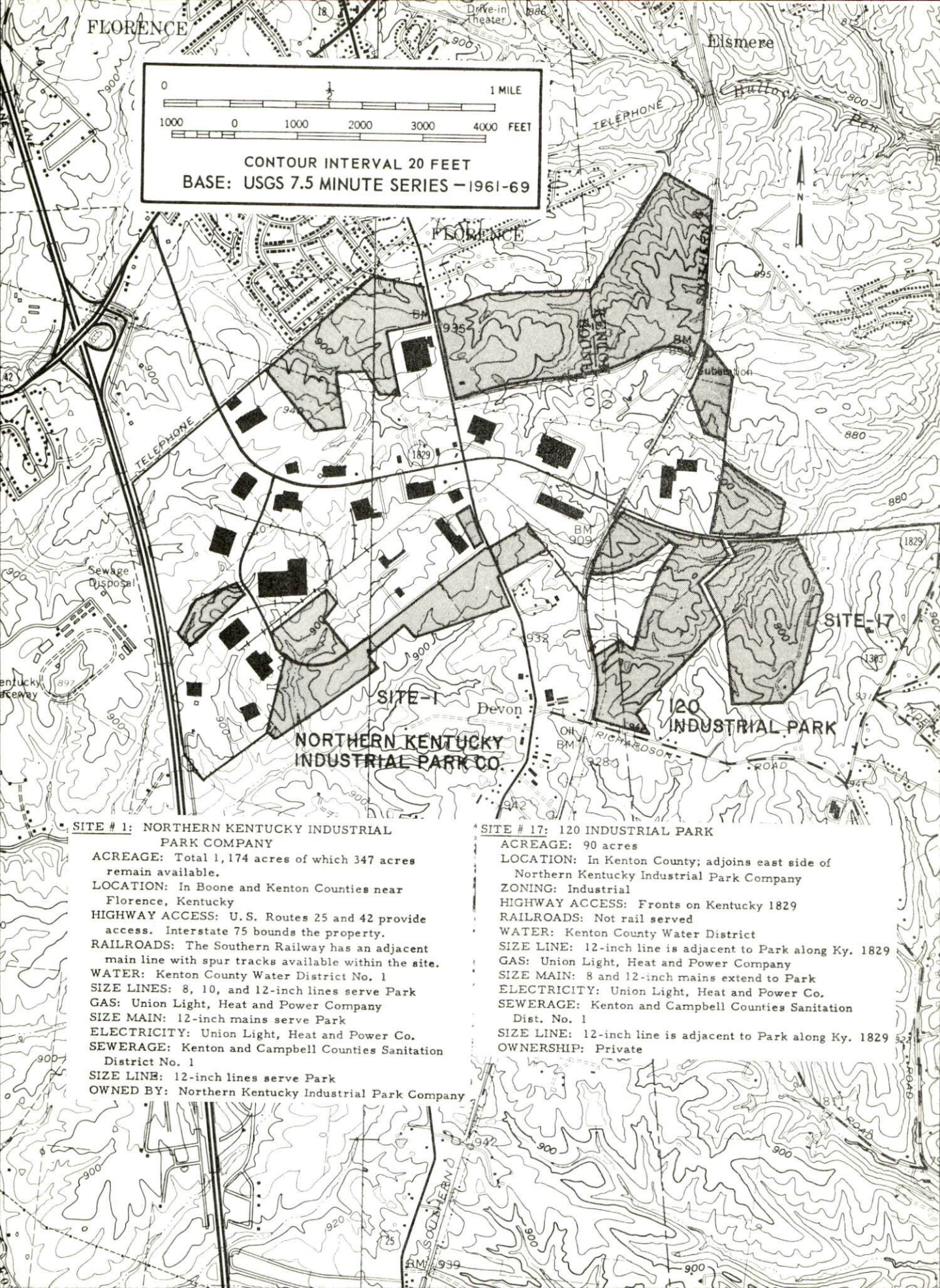
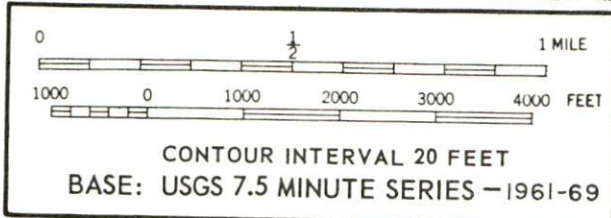
SITE # 6 (Potential):
 ACREAGE: 600 acres
 LOCATION: Approximately 10 miles south of Newport
 HIGHWAY ACCESS: Whites Road provides access to Kentucky Route 177
 RAILROAD: This property is bound by the Louisville & Nashville Railroad.
 WATER: Campbell County Water District No. 1
 GAS: Union Light, Heat and Power Co.
 ELECTRICITY: Union Light, Heat and Power Co.
 SEWERAGE: Kenton and Campbell Counties Sanitation District No. 1



SITE # 7 (Potential):
 ACREAGE 430 acres
 LOCATION: In Mentor, Kentucky, on the Ohio River
 HIGHWAY ACCESS: Fronts on Kentucky Route 8
 RAILROAD: The Chessie System (C&O/B&O) passes through this property.
 RAW WATER: Ohio River
 ELECTRICITY: Union Light, Heat and Power Co.

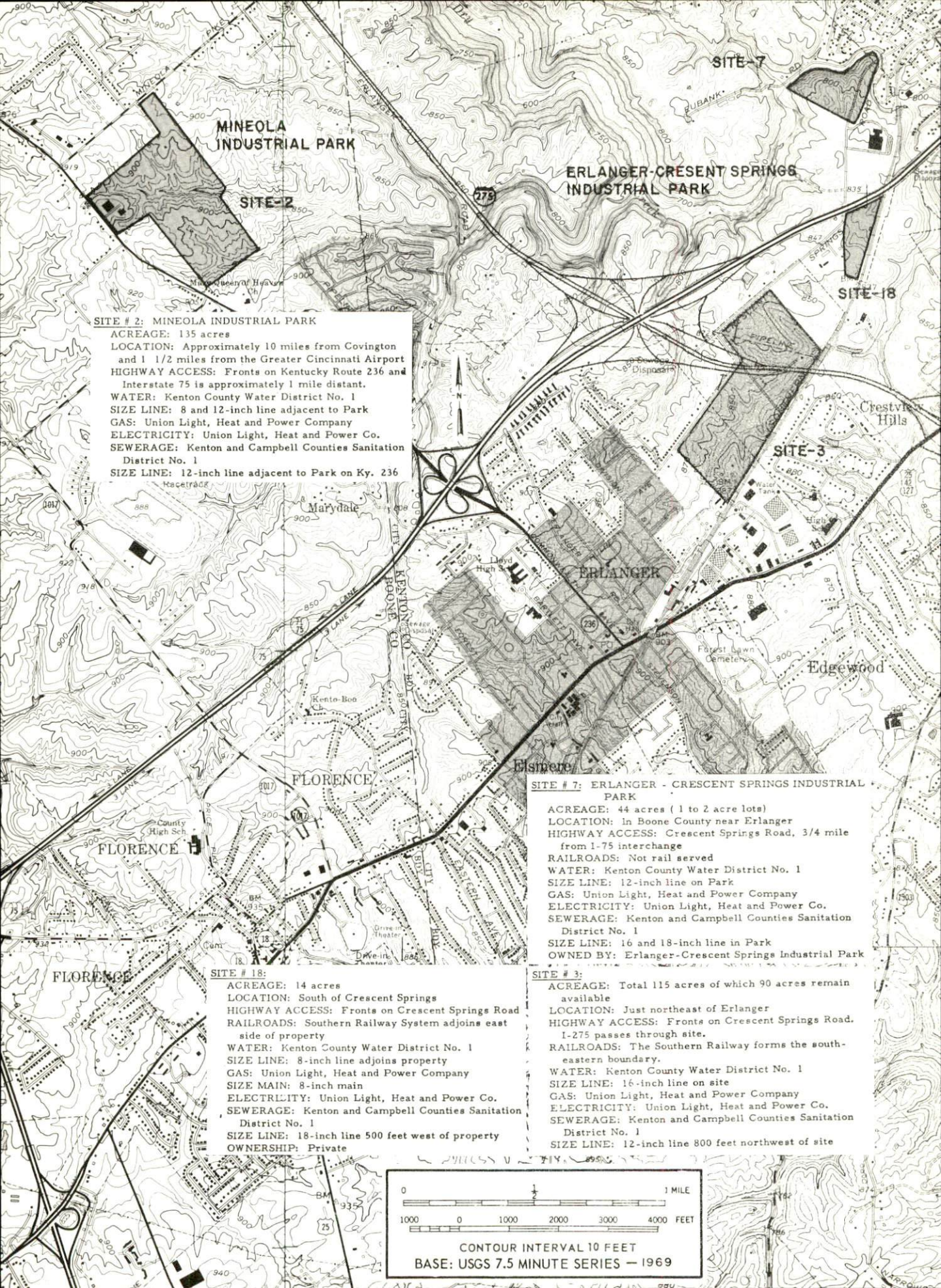
FLORENCE

Elsmere



SITE # 1: NORTHERN KENTUCKY INDUSTRIAL PARK COMPANY
ACREAGE: Total 1,174 acres of which 347 acres remain available.
LOCATION: In Boone and Kenton Counties near Florence, Kentucky
HIGHWAY ACCESS: U. S. Routes 25 and 42 provide access. Interstate 75 bounds the property.
RAILROADS: The Southern Railway has an adjacent main line with spur tracks available within the site.
WATER: Kenton County Water District No. 1
SIZE LINES: 8, 10, and 12-inch lines serve Park
GAS: Union Light, Heat and Power Company
SIZE MAIN: 12-inch mains serve Park
ELECTRICITY: Union Light, Heat and Power Co.
SEWERAGE: Kenton and Campbell Counties Sanitation District No. 1
SIZE LINE: 12-inch lines serve Park
OWNED BY: Northern Kentucky Industrial Park Company

SITE # 17: 120 INDUSTRIAL PARK
ACREAGE: 90 acres
LOCATION: In Kenton County; adjoins east side of Northern Kentucky Industrial Park Company
ZONING: Industrial
HIGHWAY ACCESS: Fronts on Kentucky 1829
RAILROADS: Not rail served
WATER: Kenton County Water District
SIZE LINE: 12-inch line is adjacent to Park along Ky. 1829
GAS: Union Light, Heat and Power Company
SIZE MAIN: 8 and 12-inch mains extend to Park
ELECTRICITY: Union Light, Heat and Power Co.
SEWERAGE: Kenton and Campbell Counties Sanitation Dist. No. 1
SIZE LINE: 12-inch line is adjacent to Park along Ky. 1829
OWNERSHIP: Private

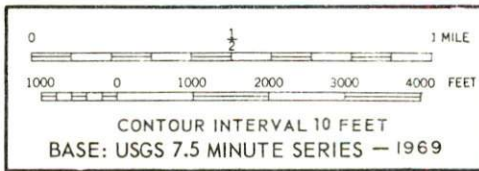


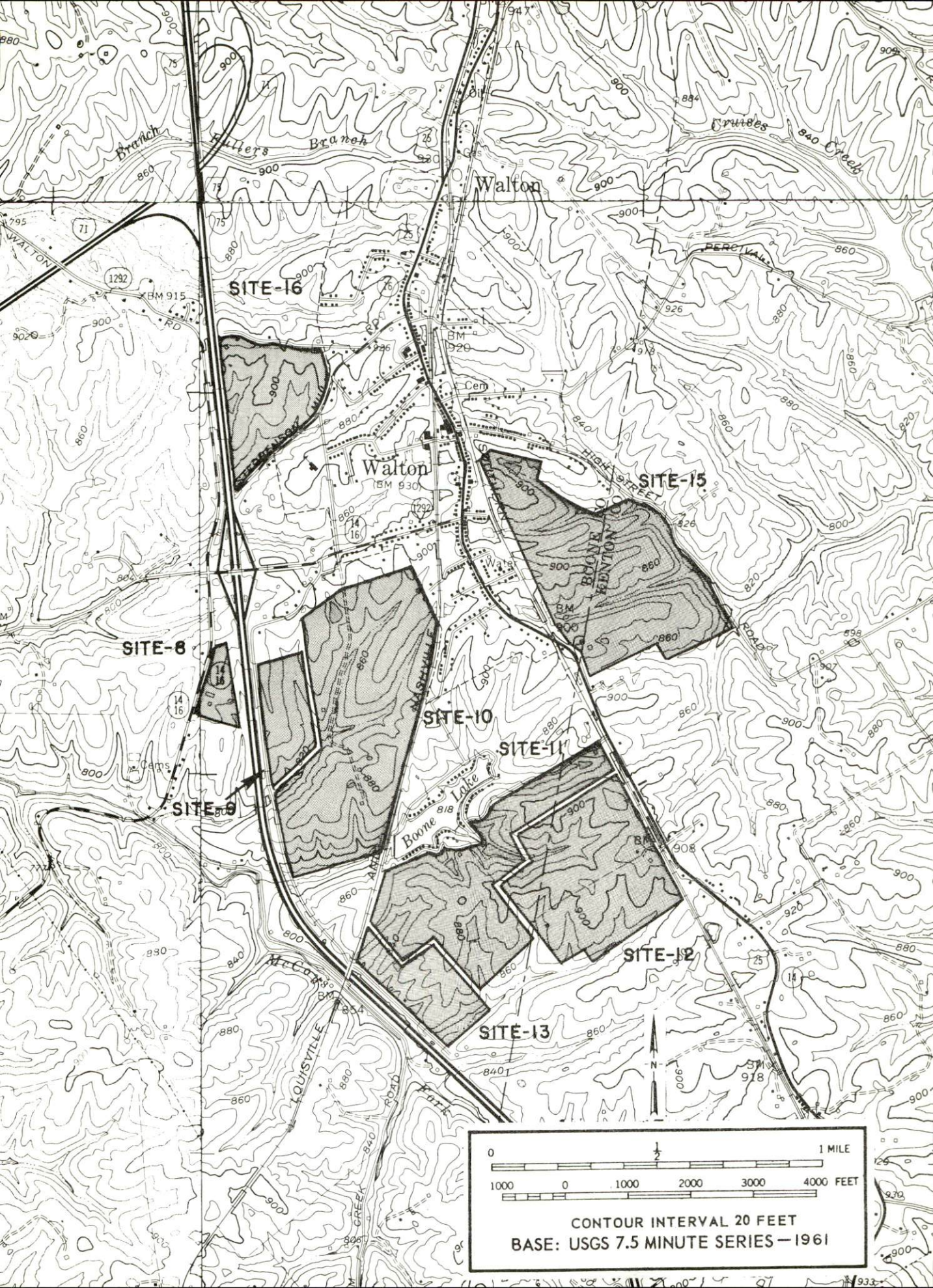
SITE # 2: MINEOLA INDUSTRIAL PARK
ACREAGE: 135 acres
LOCATION: Approximately 10 miles from Covington and 1 1/2 miles from the Greater Cincinnati Airport
HIGHWAY ACCESS: Fronts on Kentucky Route 236 and Interstate 75 is approximately 1 mile distant
WATER: Kenton County Water District No. 1
SIZE LINE: 8 and 12-inch line adjacent to Park
GAS: Union Light, Heat and Power Company
ELECTRICITY: Union Light, Heat and Power Co.
SEWERAGE: Kenton and Campbell Counties Sanitation District No. 1
SIZE LINE: 12-inch line adjacent to Park on Ky. 236

SITE # 7: ERLANGER - CRESCENT SPRINGS INDUSTRIAL PARK
ACREAGE: 44 acres (1 to 2 acre lots)
LOCATION: In Boone County near Erlanger
HIGHWAY ACCESS: Crescent Springs Road, 3/4 mile from I-75 interchange
RAILROADS: Not rail served
WATER: Kenton County Water District No. 1
SIZE LINE: 12-inch line on Park
GAS: Union Light, Heat and Power Company
ELECTRICITY: Union Light, Heat and Power Co.
SEWERAGE: Kenton and Campbell Counties Sanitation District No. 1
SIZE LINE: 16 and 18-inch line in Park
OWNED BY: Erlanger - Crescent Springs Industrial Park

SITE # 18:
ACREAGE: 14 acres
LOCATION: South of Crescent Springs
HIGHWAY ACCESS: Fronts on Crescent Springs Road
RAILROADS: Southern Railway System adjoins east side of property
WATER: Kenton County Water District No. 1
SIZE LINE: 8-inch line adjoins property
GAS: Union Light, Heat and Power Company
SIZE MAIN: 8-inch main
ELECTRICITY: Union Light, Heat and Power Co.
SEWERAGE: Kenton and Campbell Counties Sanitation District No. 1
SIZE LINE: 18-inch line 500 feet west of property
OWNERSHIP: Private

SITE # 3:
ACREAGE: Total 115 acres of which 90 acres remain available
LOCATION: Just northeast of Erlanger
HIGHWAY ACCESS: Fronts on Crescent Springs Road. I-275 passes through site.
RAILROADS: The Southern Railway forms the south-eastern boundary.
WATER: Kenton County Water District No. 1
SIZE LINE: 16-inch line on site
GAS: Union Light, Heat and Power Company
ELECTRICITY: Union Light, Heat and Power Co.
SEWERAGE: Kenton and Campbell Counties Sanitation District No. 1
SIZE LINE: 12-inch line 800 feet northwest of site





SITE-16

SITE-15

SITE-8

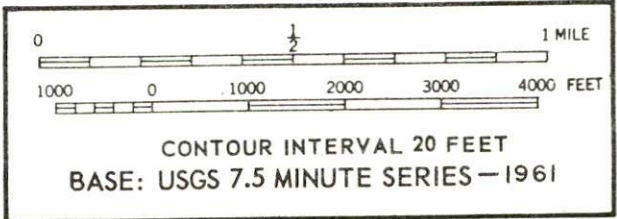
SITE-10

SITE-11

SITE-9

SITE-12

SITE-13



SITE # 8: MCELROY PROPERTY

ACREAGE: 18 acres
LOCATION: In City of Walton, Boone County, Ky.
HIGHWAY ACCESS: State Route 16 at I-75 interchange
WATER: City of Walton
SIZE LINE: 8-inch line across Ky. 14-16
GAS: Union Light, Heat and Power Company
ELECTRICITY: Union Light, Heat and Power Company
*SEWERAGE

SITE # 9: HAYES PROPERTY

ACREAGE: 10 acres
LOCATION: In City of Walton, Boone County, Ky.
HIGHWAY ACCESS: Old Verona Road at I-75 interchange
WATER: City of Walton
SIZE LINE: 8-inch line 200 feet north of site
GAS: Union Light, Heat and Power Company
ELECTRICITY: Union Light, Heat and Power Company
RAILROADS: Possible to extend Louisville & Nashville Railroad, but not practical
*SEWERAGE

SITE # 10: MCELROY PROPERTY

ACREAGE: 120 acres
LOCATION: In City of Walton, Boone County, Ky.
HIGHWAY ACCESS: Old Verona Road, at I-75 and interchange and easement from State Route 16
RAILROADS: The Louisville & Nashville Railroad forms east boundary of site.
WATER: City of Walton
SIZE LINE: 6-inch line on site; 8-inch line 100 feet north of site
GAS: Union Light, Heat and Power Company
ELECTRICITY: Union Light, Heat and Power Company
*SEWERAGE

SITE # 11: CURTS PROPERTY

ACREAGE: 120 acres
LOCATION: Boone and Kenton Counties near Walton
HIGHWAY ACCESS: U.S. 25 provides access. Access to I-75 is nearby.
RAILROADS: The Louisville & Nashville Railroad borders west side of property and the Southern is adjacent on the east side.
WATER: City of Walton
SIZE LINE: 6-inch line 900 feet north of site along U.S. 25
GAS: Union Light, Heat and Power Company
ELECTRICITY: Union Light, Heat and Power Company
*SEWERAGE

SITE # 12: LOOMIS PROPERTY

ACREAGE: 130 acres
LOCATION: Boone and Kenton Counties near Walton
HIGHWAY ACCESS: U.S. 25 provides access. Access to I-75 is nearby
RAILROADS: The Southern Railway forms the east boundary of property
WATER: City of Walton
SIZE LINE: 6-inch line 1,500 feet north along U.S. 25
GAS: Union Light, Heat and Power Company
ELECTRICITY: Union Light, Heat and Power Company
*SEWERAGE

SITE # 13: WATSON PROPERTY

ACREAGE: 53 acres
LOCATION: Boone County near Walton
HIGHWAY ACCESS: Ky. 16 via Old Verona Road
RAILROADS: The Louisville & Nashville Railroad borders the property.
WATER: City of Walton
SIZE LINE: 6-inch line 3,700 feet north along L&N Railroad
GAS: Union Light, Heat and Power Company
ELECTRICITY: Union Light, Heat and Power Company
*SEWERAGE

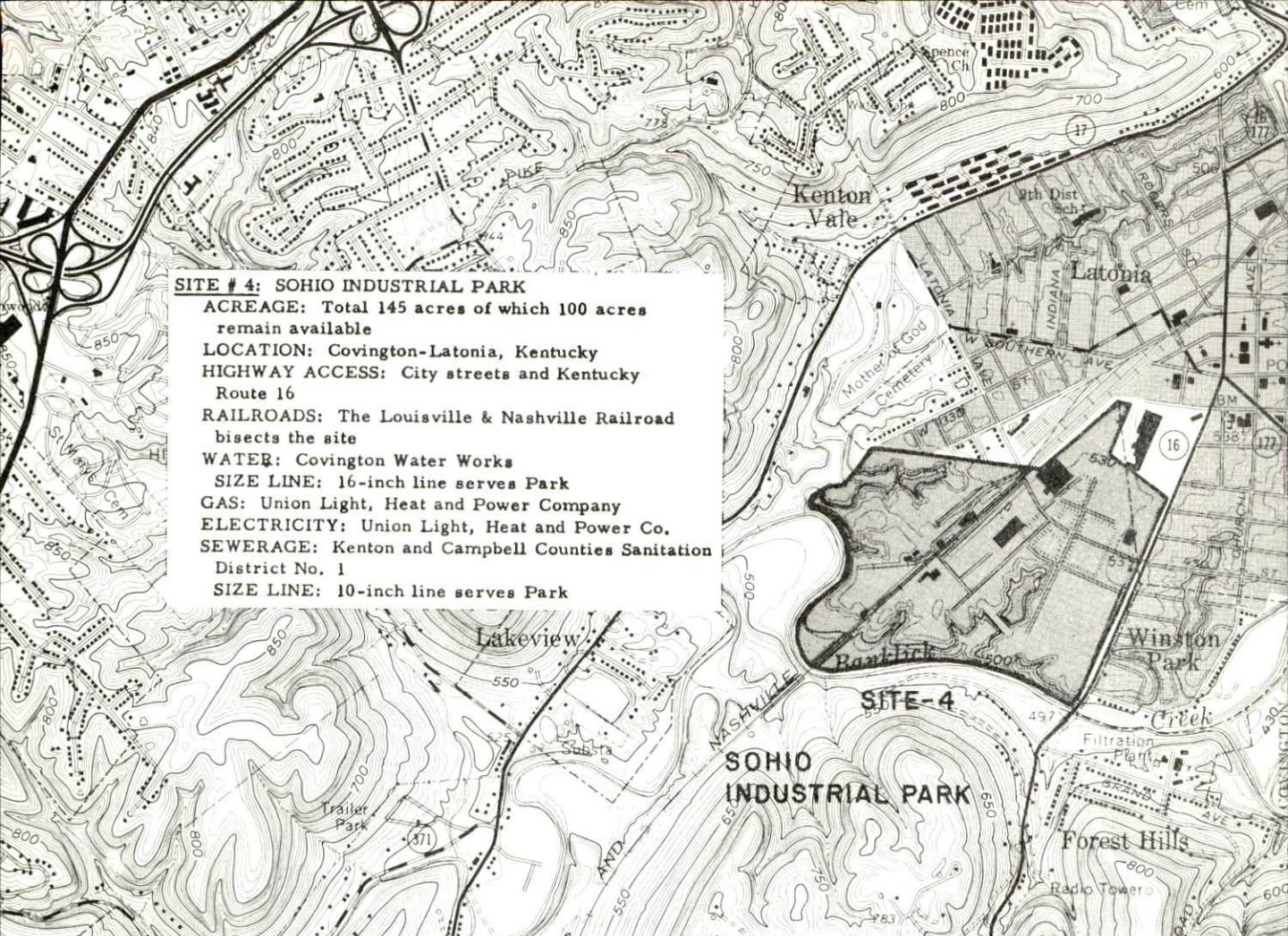
SITE # 15:

ACREAGE: 178 acres
LOCATION: Partially in East Walton City Limits
HIGHWAY ACCESS: Fronts on U.S. 25 and High Street
RAILROADS: Southern Railway System borders western property boundary
WATER: Walton Water Works, 6-inch line adjoins property; 100,000 gallon water tower across Railroad from property.
GAS: Union Light, Heat and Power Company
ELECTRICITY: Union Light, Heat and Power Company
*SEWERAGE
OWNERSHIP: Private

SITE # 16:

ACREAGE: 70 acres
LOCATION: Adjoins Walton Northwestern City Limits
HIGHWAY ACCESS: Fronts on Stephenson Mill Road and light duty county road
RAILROADS: Not rail served
WATER: Walton Water Works, 6-inch line adjoins site
GAS: Union Light, Heat and Power Company
ELECTRICITY: Union Light, Heat and Power Company
*SEWERAGE
OWNERSHIP: Private

*City of Walton has engineered a sewerage system and has applied for and has partial approval for Federal funds. Pending final grant of loan, the city will begin construction immediately and hopes to have system in operation by 1973. In the meantime, city is willing to work out temporary system for prospective industries.



SITE # 4: SOHIO INDUSTRIAL PARK

ACREAGE: Total 145 acres of which 100 acres remain available

LOCATION: Covington-Latonia, Kentucky

HIGHWAY ACCESS: City streets and Kentucky Route 16

RAILROADS: The Louisville & Nashville Railroad bisects the site

WATER: Covington Water Works

SIZE LINE: 16-inch line serves Park

GAS: Union Light, Heat and Power Company

ELECTRICITY: Union Light, Heat and Power Co.

SEWERAGE: Kenton and Campbell Counties Sanitation District No. 1

SIZE LINE: 10-inch line serves Park



SITE # 14: SCHNEIDER PROPERTY

ACREAGE: 56 acres

LOCATION: City of Crittenden, Grant County, Ky.

HIGHWAY ACCESS: Fronts on U.S. 25 near I-75 interchange

RAILROADS: The Southern Railway borders west side of property

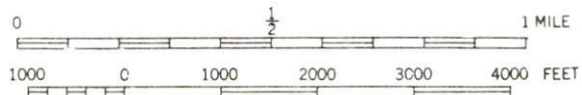
WATER: Bullock Pen Water District

SIZE LINE: 6-inch line across U.S. 25 at north-western corner of site

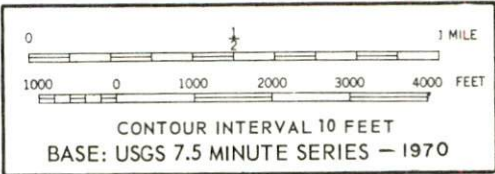
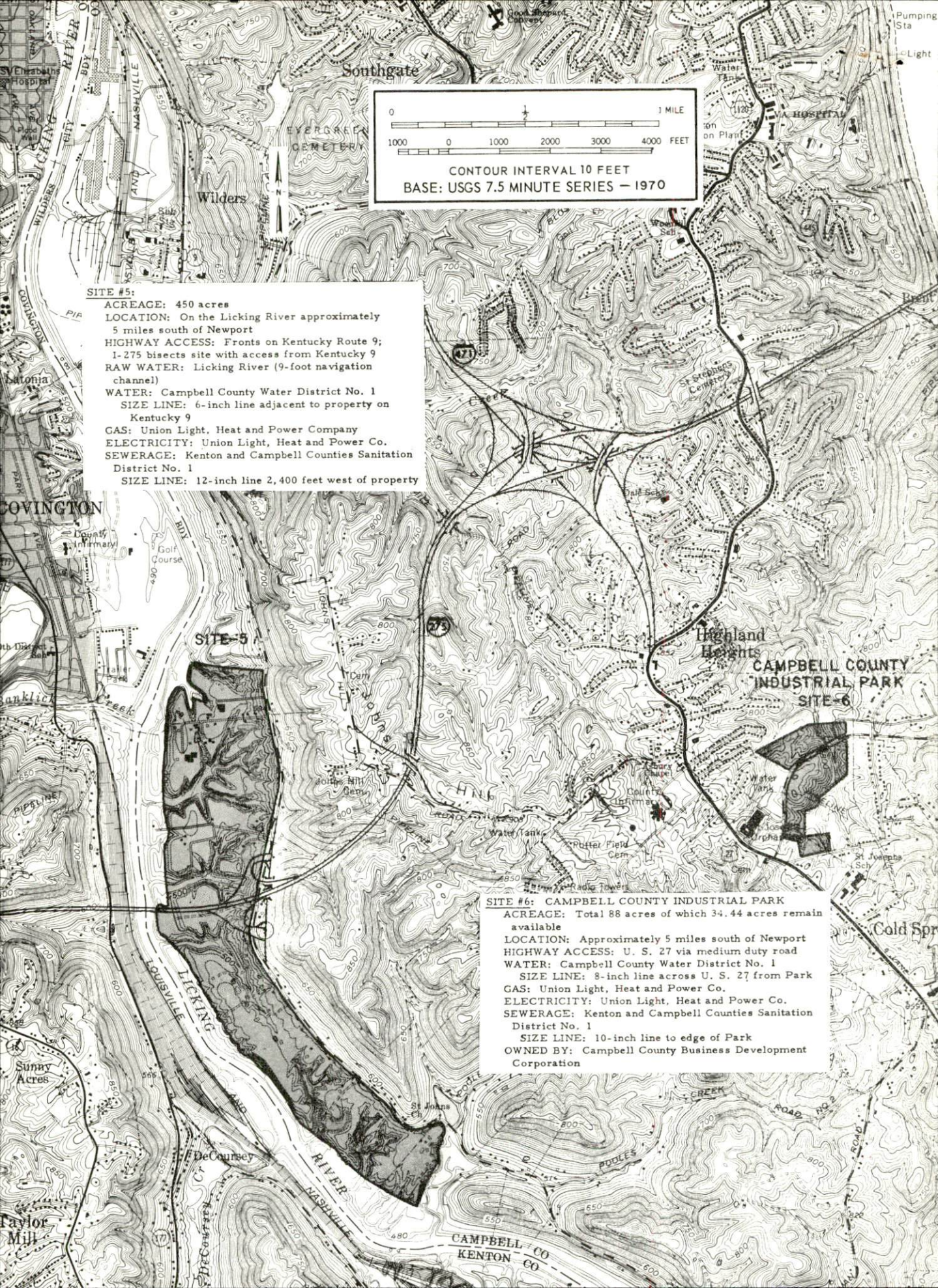
GAS: Union Light, Heat and Power Company

ELECTRICITY: Union Light, Heat and Power Company

SEWERAGE: Package plant necessary



CONTOUR INTERVAL 10 FEET
BASE: USGS 7.5 MINUTE SERIES — 1961-69



SITE #5:
ACREAGE: 450 acres
LOCATION: On the Licking River approximately 5 miles south of Newport
HIGHWAY ACCESS: Fronts on Kentucky Route 9; 1-275 bisects site with access from Kentucky 9
RAW WATER: Licking River (9-foot navigation channel)
WATER: Campbell County Water District No. 1
SIZE LINE: 6-inch line adjacent to property on Kentucky 9
GAS: Union Light, Heat and Power Company
ELECTRICITY: Union Light, Heat and Power Co.
SEWERAGE: Kenton and Campbell Counties Sanitation District No. 1
SIZE LINE: 12-inch line 2,400 feet west of property

SITE #6: CAMPBELL COUNTY INDUSTRIAL PARK
ACREAGE: Total 88 acres of which 34.44 acres remain available
LOCATION: Approximately 5 miles south of Newport
HIGHWAY ACCESS: U. S. 27 via medium duty road
WATER: Campbell County Water District No. 1
SIZE LINE: 8-inch line across U. S. 27 from Park
GAS: Union Light, Heat and Power Co.
ELECTRICITY: Union Light, Heat and Power Co.
SEWERAGE: Kenton and Campbell Counties Sanitation District No. 1
SIZE LINE: 10-inch line to edge of Park
OWNED BY: Campbell County Business Development Corporation

INDUSTRIAL RESOURCES

NORTHERN KENTUCKY

Prepared by

The Kentucky Department of Commerce

in cooperation with

The Northern Kentucky Chamber of Commerce

1973

TABLE OF CONTENTS

<u>Chapter</u>	<u>Page</u>
INDUSTRIAL SITES	i
NORTHERN KENTUCKY - A RESOURCE PROFILE	1
THE LABOR MARKET	5
Population Data for Northern Kentucky Area	5
Population of Principal Towns in Northern Kentucky Area	5
General Employment Characteristics, 1971	6
Manufacturing Employment Trends by Industry	7
Major Northern Kentucky Area Manufacturing Firms, Their Products and Employment	7
Wages	9
Labor Organizations	10
Current and Future Labor Supply	13
Total Personal Income	13
Per Capita Personal Income	13
EDUCATION	14
Vocational Schools	14
Colleges and Universities	14
TRANSPORTATION	15
Rail	15
Truck Service	15
Air	16
Water	16
AGRICULTURE - NATURAL RESOURCES - CLIMATE	18
Agriculture	18
Natural Resources	18
Climate	18
BOONE COUNTY	
LOCAL EDUCATION	19
Public Schools	19
Non-public Schools	19

<u>Chapter</u>	<u>Page</u>
LOCAL TRANSPORTATION	20
Bus	20
Taxi	20
Rental Services	20
POWER AND FUEL	21
Electricity	21
Natural Gas	21
Other Fuels	21
WATER AND SEWERAGE	22
Water	22
Sewerage	24
LOCAL GOVERNMENT	25
City	25
County	25
Assessed Value of Property, 1972	25
Local General Property Tax Rates Per \$100 of Assessed Valuation, 1972	25
Utilities Gross Receipts Tax for Schools	26
Planning and Zoning	26
Safety	26
Police	26
Fire	26
Rescue Service	26
Sanitation	27
HEALTH	28
Hospitals	28
Nursing Homes	28
Public Health	28
OTHER LOCAL FACILITIES	29
Communications	29
Library Services	30
Religious Institutions	30
Financial Institutions	30
Hotels and Motels	30
Clubs and Organizations	31

<u>Chapter</u>	<u>Page</u>
RECREATION	32
Local	32
Area	32
HISTORY	33
KENTON COUNTY	
LOCAL EDUCATION	37
Public Schools	37
Non-public Schools	38
LOCAL TRANSPORTATION	39
Bus	39
Taxi	39
Rental Services	39
POWER AND FUEL	40
Electricity	40
Natural Gas	40
Other Fuels	40
WATER AND SEWERAGE	41
Water	41
Sewerage	42
LOCAL GOVERNMENT	43
City	43
County	43
Assessed Value of Property, 1972	43
Local General Property Tax Rates Per \$100 of Assessed Valuation, 1972	44
Utilities Gross Receipts Tax for Schools	44
Planning and Zoning	44
Safety	45
Police	45
Fire	45
Rescue Service	45
Sanitation	46

<u>Chapter</u>	<u>Page</u>
HEALTH	47
Hospitals	47
Nursing Homes	47
Public Health	48
OTHER LOCAL FACILITIES	49
Communications	49
Library Services	50
Religious Institutions	51
Financial Institutions	51
Hotels and Motels	52
Clubs and Organizations	53
RECREATION	54
Local	54
Area	54
HISTORY	55
CAMPBELL COUNTY	
LOCAL EDUCATION	57
Public Schools	57
Non-public Schools	59
LOCAL TRANSPORTATION	60
Bus	60
Taxi	60
Rental Services	60
POWER AND FUEL	61
Electricity	61
Natural Gas	61
Other Fuels	61
WATER AND SEWERAGE	62
Water	62
Sewerage	63

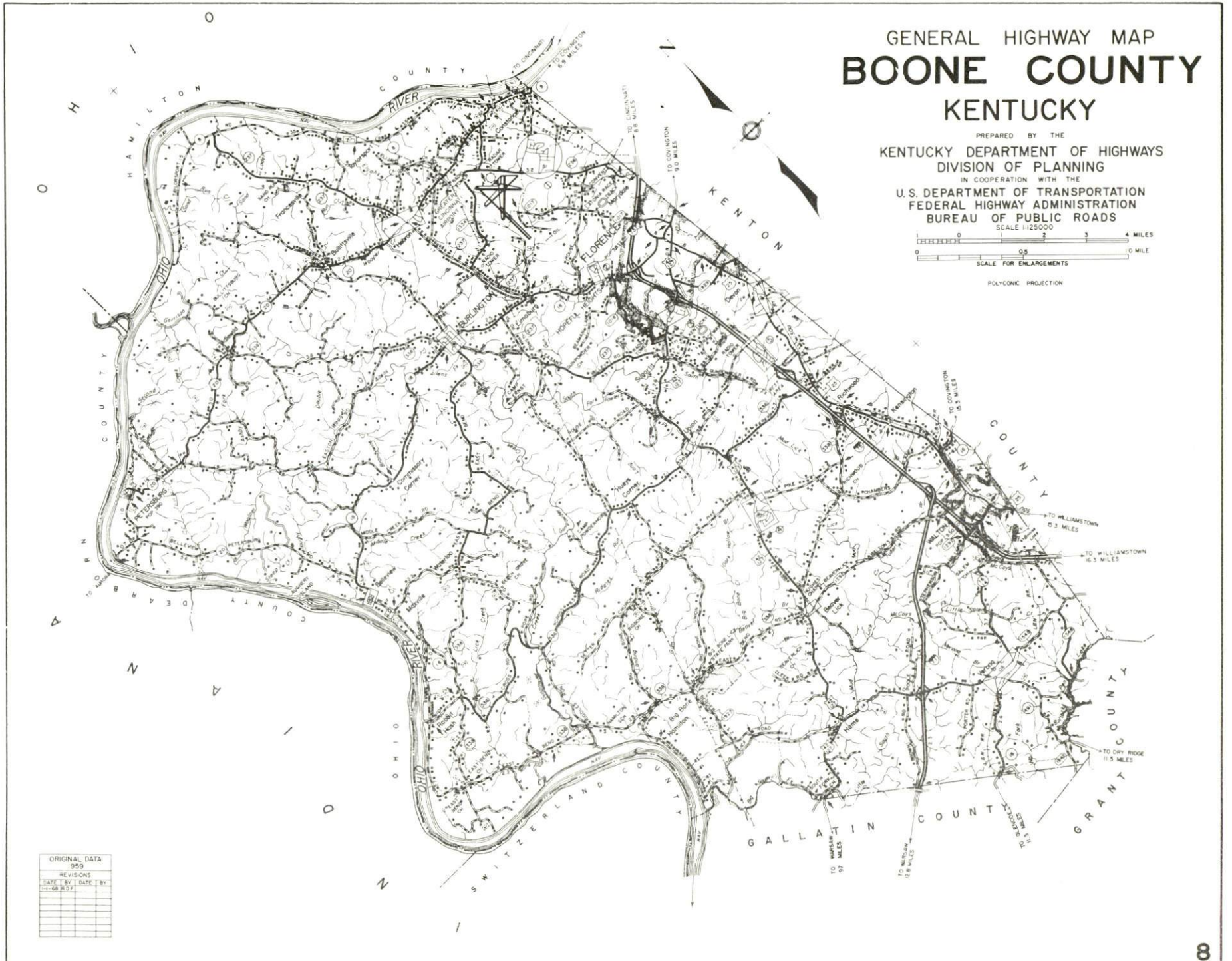
<u>Chapter</u>	<u>Page</u>
LOCAL GOVERNMENT	64
City	64
County	64
Assessed Value of Property, 1972	64
Local General Property Tax Rates Per \$100 of Assessed Valuation, 1972	64
Planning and Zoning	65
Safety	65
Police	65
Fire	65
Rescue Service	65
Sanitation	66
HEALTH	67
Hospitals	67
Nursing Homes	67
Public Health	67
OTHER LOCAL FACILITIES	68
Communications	68
Library Services	69
Religious Institutions	69
Financial Institutions	69
Hotels and Motels	70
Clubs and Organizations	70
RECREATION	72
Local	72
Area	72
HISTORY	73

GENERAL HIGHWAY MAP BOONE COUNTY KENTUCKY

PREPARED BY THE
KENTUCKY DEPARTMENT OF HIGHWAYS
DIVISION OF PLANNING
IN COOPERATION WITH THE
U.S. DEPARTMENT OF TRANSPORTATION
FEDERAL HIGHWAY ADMINISTRATION
BUREAU OF PUBLIC ROADS



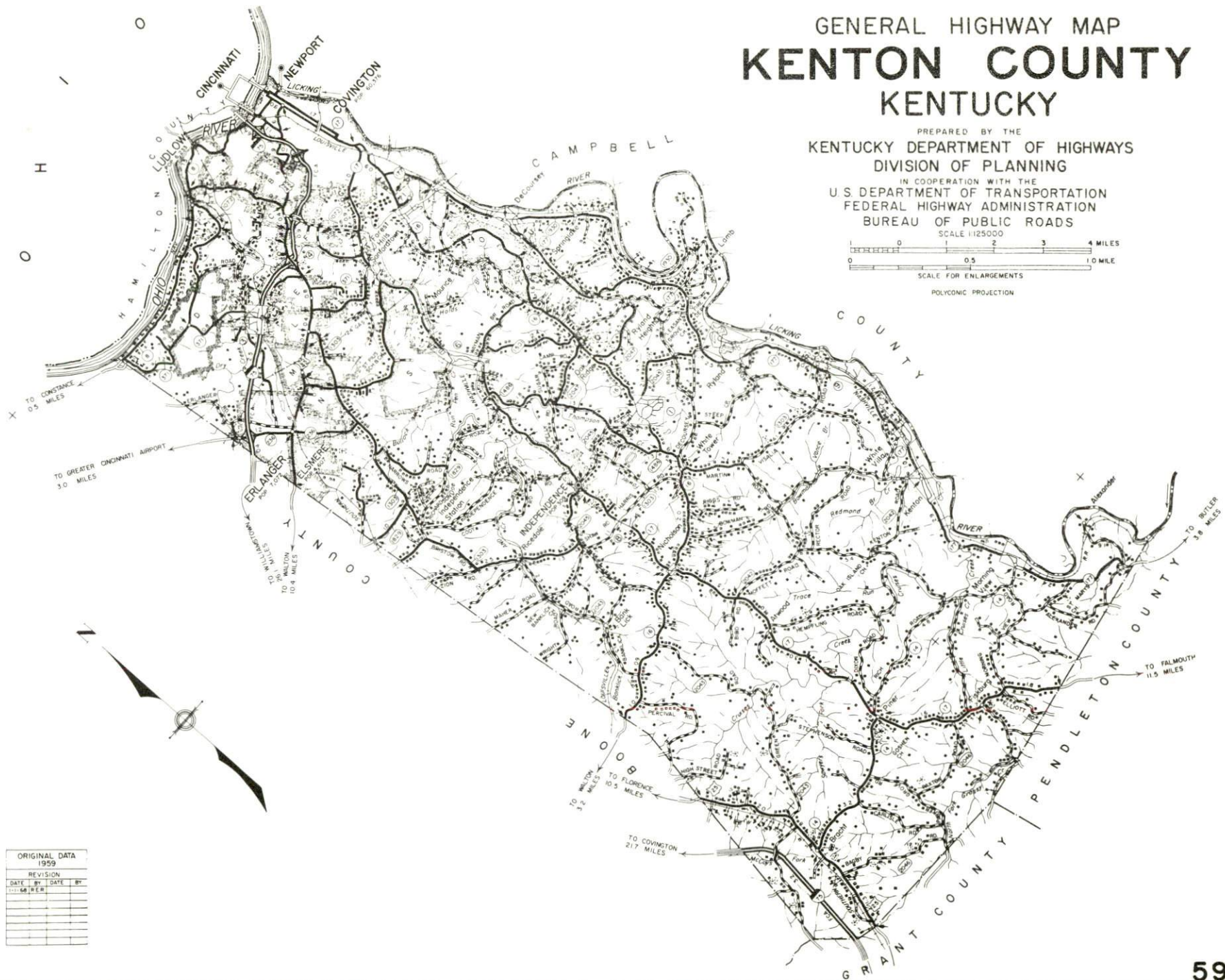
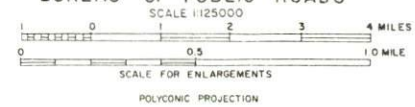
POLYCONIC PROJECTION



ORIGINAL DATA	1959
REVISIONS	
DATE	BY DATE BY

GENERAL HIGHWAY MAP KENTON COUNTY KENTUCKY

PREPARED BY THE
KENTUCKY DEPARTMENT OF HIGHWAYS
DIVISION OF PLANNING
IN COOPERATION WITH THE
U.S. DEPARTMENT OF TRANSPORTATION
FEDERAL HIGHWAY ADMINISTRATION
BUREAU OF PUBLIC ROADS



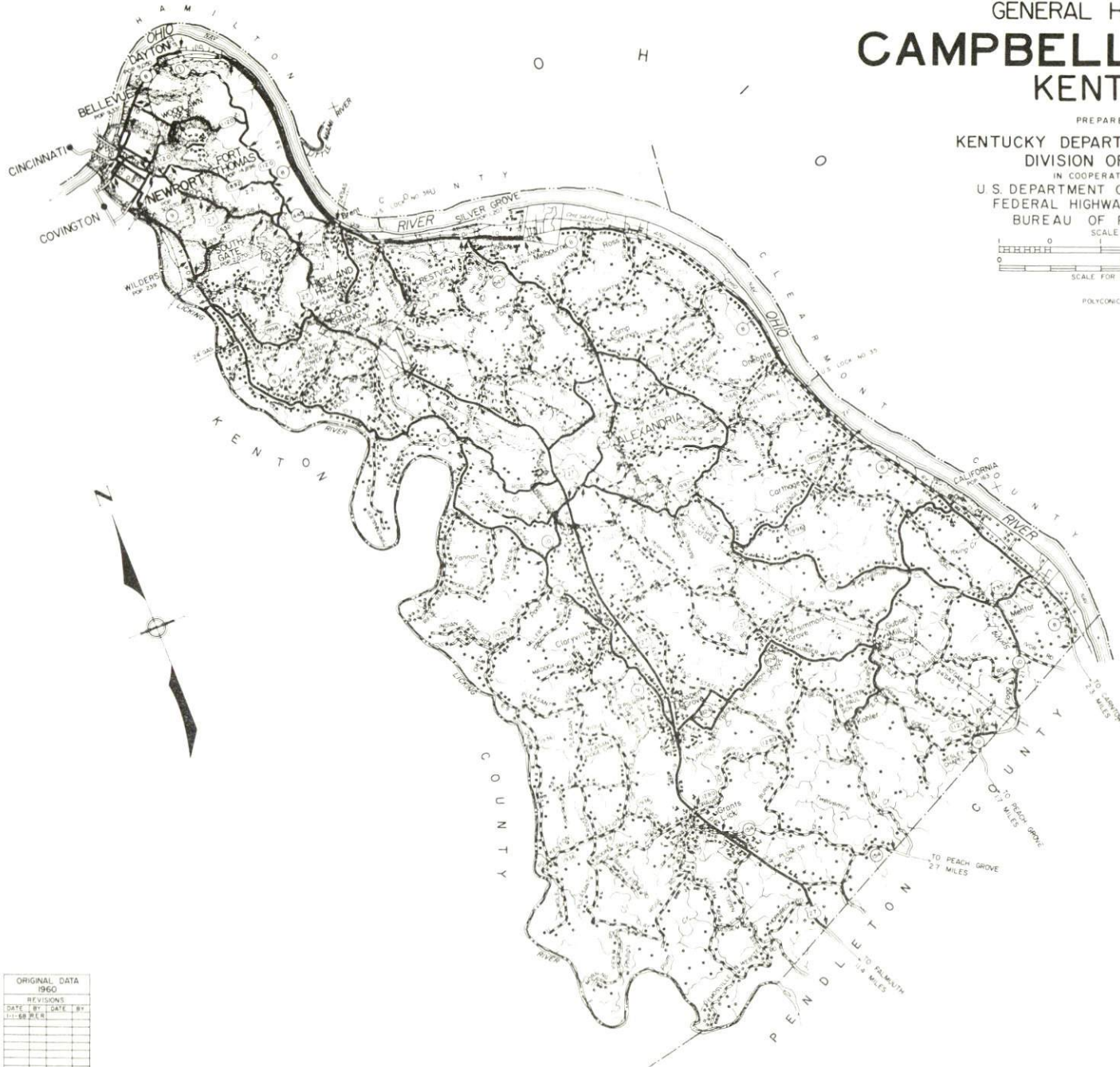
ORIGINAL DATA	1959
REVISION	
DATE	BY
1-56	J.E.R.

GENERAL HIGHWAY MAP CAMPBELL COUNTY KENTUCKY

PREPARED BY THE
KENTUCKY DEPARTMENT OF HIGHWAYS
DIVISION OF PLANNING
IN COOPERATION WITH THE
U. S. DEPARTMENT OF TRANSPORTATION
FEDERAL HIGHWAY ADMINISTRATION
BUREAU OF PUBLIC ROADS



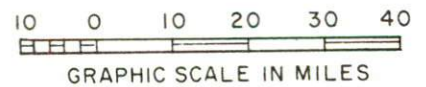
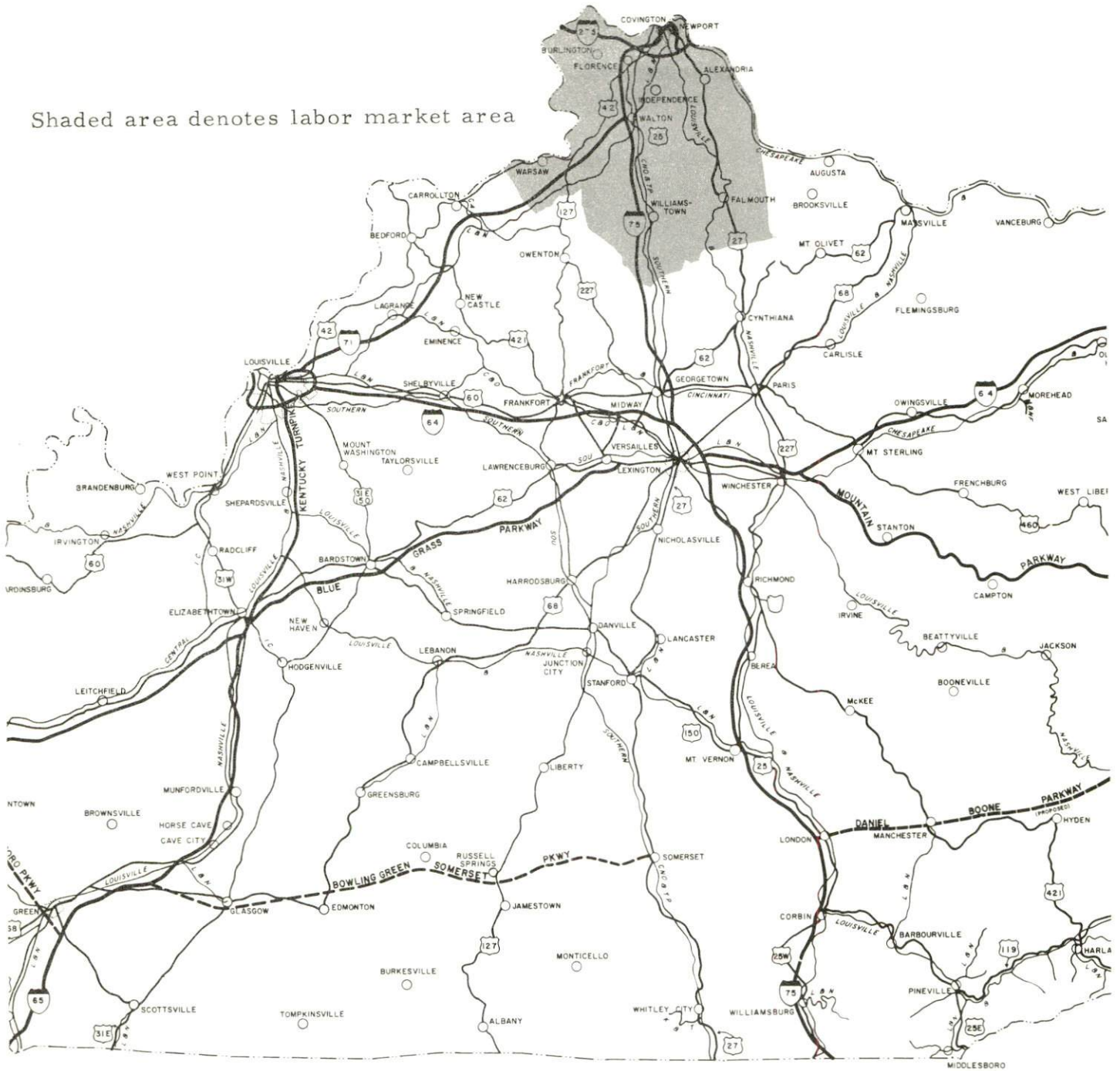
POLYCONIC PROJECTION



ORIGINAL DATA	
1960	
REVISIONS	
DATE	BY
11-18-60	W.E.S.

NORTHERN KENTUCKY LABOR MARKET AREA

Shaded area denotes labor market area



NORTHERN KENTUCKY - A RESOURCE PROFILE

Location

The Northern Kentucky Area, covering 563 square miles, is composed of Boone, Kenton, and Campbell Counties, and located immediately south of Cincinnati, Ohio. A portion of Greater Cincinnati is located in the three Northern Kentucky counties. The Ohio River forms the western, northern, and eastern boundaries of this tri-county area. The tri-county area is part of the eight-county Northern Kentucky Area Development District, which is a statutory administrative unit organized to promote regional program planning.

Northern Kentucky is at the apex of the Golden Triangle of Kentucky. This triangle centers on Northern Kentucky, Louisville, and Lexington, and contains one-half the population and one-half the employment of Kentucky. The 1970 population of the tri-county area was 250,753.

The Economic Framework

Total employment in the tri-county area averaged 56,630 in 1971 with agriculture providing 1,450 jobs, manufacturing 10,330, trade and services 21,340, and government 6,190 jobs. Since 1961, manufacturing employment has increased by approximately 35 percent or 2,745 jobs.

Some of the major industrial products are: paper and plastic bags, water meters, conveyor systems, cleaning and finishing equipment, commercial kitchen equipment, metal dinette sets, cartoning machinery, soap presses, railroad freight cars, electrical equipment, miniature car tags, men's outerwear and slacks, steel sheets, coils and line pipe, and malt beverages.

Per capita personal income in 1970 was \$3,999 in Boone County, \$3,498 in Kenton County, and \$3,345 in Campbell County, all exceeding the statewide average of \$3,019. Between 1960 and 1970, per capita personal income in Boone County increased approximately 237 percent, in Kenton County approximately 92 percent, and in Campbell County approximately 69 percent.

The Northern Kentucky labor market area includes six Kentucky counties -- Boone, Kenton, Campbell, Gallatin, Grant, and Pendleton; two Ohio counties -- Hamilton and Clermont; and in Indiana, Dearborn, County. Employment in the Kentucky portion of the labor market area in 1971 totaled 63,310 jobs with agriculture providing 3,440, manufacturing 10,870, trade and services 22,745, and government 7,240. In the

Kentucky area, industrial employment has increased by approximately 37 percent or 3,045 jobs since 1961 with sharpest gains in the machinery, and fabricated metal products industries.

Despite important industrial gains in recent years, the Kentucky area still has a deficit of 13,730 manufacturing jobs when measured against the national industrial employment-population ratio. This indicates an area where the potential for additional manufacturing production is excellent.

Resources for Growth

1. There is a current estimated labor supply of 10,680 men and 16,380 women in the Kentucky portion of the labor market area available for industrial jobs in the Northern Kentucky Area. In addition, 14,980 young men and 14,355 young women in the northern Kentucky counties will become 18 years of age by 1978 and potentially available for work. The current labor supply would also be increased by the number of men and women in the adjoining Indiana and Ohio counties who are available for industrial jobs.

2. Three railroads serve Northern Kentucky - Southern Railway, Louisville & Nashville, and The Chessie System. Major highway access is by three U.S. routes and Interstates 71 and 75. Presently underway in Northern Kentucky is the construction of Interstates 275 and 471. Commercial air service is available at the Greater Cincinnati Airport, located in Boone County, Kentucky. Barge transportation is available on the Ohio River.

3. Electric power and natural gas are provided by the Union Light, Heat and Power Company, a subsidiary of Cincinnati Gas and Electric Company. Other fuels - propane, butane, and distillate fuel oil - are available in the area. The raw water supply from the Ohio and Licking Rivers is adequate for additional growth.

4. Northern Kentucky has 12 industrial sites, 6 industrial parks, and 7 potential river sites available for industrial use.

5. Education is an important growth asset for Northern Kentucky with three county school systems, eleven independent school systems, and over fifty non-public schools providing educational facilities ranging from kindergarten through high school. Educational television is available.

Two universities and six senior colleges are located within a 35-mile radius of the tri-county area.

Northern Kentucky State College was the first Kentucky community college. It is now a 4-year state college and occupies a new 250-acre site near Highland Heights, Kentucky. In 1972, the former Cincinnati based Salmon P. Chase College of Law merged with the Northern Kentucky State College.

The Northern Kentucky State Vocational-Technical School is located in Covington, and offers training in 22 different subject areas.

Community Programs for Improvement

The improvements listed below in no way purport to be all of the improvements that are being planned or have recently taken place in Northern Kentucky.

Completed community improvements for Boone County include: a \$2,000,000 8-story addition to Flagship Inn - Barkley House Motel; a 125-unit Ramada Inn; a health department facility; a \$900,000 elementary school for the Boone County School District; new Northern Kentucky State College extension center; a paved parking lot at the Walton-Verona School; a new vocational school; a new \$1,600,000 control tower and \$1,200,000 hangar for Greater Cincinnati Airport; and a new \$545,000 post office facility. Under construction is a terminal area project for Greater Cincinnati Airport which will include roadwork, two terminal facilities, parking lots, aircraft apron and concourses; a 300-unit, \$5,000,000 trailer park; a 100-unit Scottish Inn; a \$3,000,000 Senior Citizen high rise facility; and a \$525,000 expansion at Globe Union Company. Planned improvements include: doubling the treatment capacity of Bullock Pen Water District treatment plant, a sewerage system for Walton, an increase in size of Walton's clear well, increased sewage treatment capacity at Florence and a new 1,000,000-gallon elevated storage tank, a new vocational school, and a new 9,500-foot runway for the Greater Cincinnati Airport.

Completed community improvements for Kenton County include: a \$2,053,000 science center at Thomas More College; a \$1,200,000 junior high school in Covington; a \$3,200,000, two hundred-unit high rise facility for the elderly; an 18-story Quality Riverview Inn; a \$1,000,000 mental retardation center; renovation of a 68-room wing of the St. Elizabeth Hospital; a new high school and an addition to the elementary school at Ludlow; two elementary schools and an addition to schools at Erlanger; and an elementary school for the Kenton County School System. Under construction is Executive "75" which is an exclusive office building, a new \$1,500,000 county library, a 90-acre industrial park, a new electronics plant, and the \$1,500,000 Latonia Elementary School. Planned improvements include: a \$291,000 park for the east side of Covington, new increased primary and secondary sewage treatment facilities for Kenton-Campbell Counties Sanitation District, new 16-inch line to Taylor Mill, a 1,000,000-gallon elevated tank, and a new vocational school.

Completed community improvements for Campbell County include: a new \$20,000,000 campus for Northern Kentucky State College; new Physical Education, Science and Home Economics buildings for the Bellevue School System; remodeled cafeteria for the Southgate School System; new secondary education complex for the Newport School System; two new elementary school complexes, extensive remodeling, modernization, and expansions, and the introduction of team teaching in all elementary schools in the Ft. Thomas School System; a new administration building and an open concept building which is equal to six classrooms in the Dayton School System. Under construction are: a new 80,000-square-foot south wing for St. Luke's Hospital and a \$140,000 public park comprised of 1,040-acres. Planned improvements include: one new park each for Alexandria, Newport, and Ft. Thomas; a \$2,000,000 Urban Renewal project for Newport, and a \$12,000,000 Urban Renewal project for Dayton; two new vocational schools; a \$2,300,000 luxury apartment complex; a \$98,000 medical building; extension of Campbell County Water District lines; a proposed 4-lane toll road between Alexandria and Ashland, Kentucky; and a \$770,000 improvement of water system for Newport which will include new line, booster pumping stations, and a 1,000,000-gallon elevated tank.

Recreation, Entertainment and Livability

Recreational opportunities are readily available in the Northern Kentucky Area due in part to its superb location in the Greater Cincinnati Metropolitan Area. Spectator sports, cultural centers, amusement areas, club and park recreational centers and state parks abound.

The sports enthusiasts will enjoy high caliber collegiate and professional football, basketball (collegiate only) and baseball, professional hockey and horse racing.

Cultural interests include the Cincinnati Symphony, various art galleries and museums, libraries and legitimate theaters presenting Broadway plays.

For the outdoor enthusiasts, Big Bone Lick and the various other Kentucky state parks located within easy driving distance offer such recreational enjoyment as hiking, golfing, boating, swimming, all related water sports, camping, and horseback riding.

Children of all ages will enjoy the thrill and excitement of the Riverview and Kings Island Amusement Parks.

THE LABOR MARKET

POPULATION TRENDS^{1/}

	Population			Percent Change	
	1970	1960	1950	1960-70	1950-60
Area Total	274,835	252,767	216,853	+ 8.7	+16.5
Boone County	32,812	21,940	13,015	+49.6	+68.6
Campbell County	88,501	86,803	76,196	+ 2.0	+13.9
Kenton County	129,440	120,700	104,254	+ 7.2	+15.8
Gallatin County	4,134	3,867	3,969	+ 6.9	- 2.6
Grant County	9,999	9,489	9,809	+ 5.4	- 3.3
Pendleton County	9,949	9,968	9,610	- 0.2	+ 3.7

POPULATION TRENDS^{1/}

City	Population		Percent Change
	1970	1960	1960-70
Alexandria	3,844	1,318	+191.7
Bellevue	8,847	9,336	- 5.2
Bromley	1,069	998	+ 7.1
California	90	165	- 44.8
Cold Spring	1,406	1,095	+ 28.4
Covington	52,535	60,376	- 13.0
Crescent Park	588	564	+ 6.0
Crescent Springs	1,662	946	+ 75.7
Crestview	659	616	+ 6.9
Crestview Hills	1,114	307	+262.9
Dayton	8,751	9,050	- 3.3
Edgewood	4,139	1,100	+276.3
Elsmere	5,161	4,607	+ 12.0
Erlanger	12,676	7,072	+ 79.2
Fairview	235	-	-
Florence	11,661	5,837	+ 99.8
Fort Mitchell	6,982	525	+229.9
Fort Thomas	16,338	14,896	+ 9.7
Fort Wright Lookout Heights	4,819	-	-
Highland Heights	4,400	3,491	+ 26.0
Hopeful Heights	473	-	-
Independence	1,784	309	+477.3
Kenton Vale	178	168	+ 6.0
Lakeside Park	2,511	2,214	+ 13.4
Lakeview	478	-	-

(Cont'd)

<u>City</u>	<u>Population</u>		<u>Percent Change</u>
	<u>1970</u>	<u>1960</u>	<u>1960-70</u>
Latonia Lake	428	585	- 26.8
Ludlow	5,815	6,233	- 6.7
Newport	25,998	30,070	- 13.5
Park Hills	3,999	4,076	- 1.9
Petersburg	430	390	+ 10.3
Ridgeview Heights	189	-	-
Silver Grove	1,365	1,207	+ 13.1
Southgate	3,212	2,070	+ 55.2
Taylor Mill	3,194	710	+349.9
Villa Hills	1,647	-	-
Walton	1,801	1,530	+ 17.7
Wilders	823	239	+244.4
Winston Fark	1,108	744	+ 48.9
Woodlawn	525	387	+ 35.7

GENERAL EMPLOYMENT CHARACTERISTICS, 1971 ^{2/}

<u>Major Employment Group</u>	<u>Employment</u>	
	<u>Boone, Campbell and</u>	
	<u>Kenton Counties</u>	<u>Labor Market Area</u>
TOTAL	56,630	63,310
Agricultural	1,450	3,440
Nonagricultural	55,180	59,870
Manufacturing	10,330	10,869
Government	6,190	7,240
Trade and Services	21,346	22,744
Other	17,314	19,017

MANUFACTURING EMPLOYMENT TRENDS BY INDUSTRY
SEPTEMBER 1971 AND 1961 ^{3/}

Industry	Boone, Kenton, and Campbell Counties			Labor Market Area		
	1971	1961	% Change	1971	1961	% Change
TOTAL	10,483	7,740	+ 35.4	11,279	8,232	+ 37.0
Food & Kindred Products	816	1,242	- 34.3	866	1,243	- 30.3
Tobacco	4	10	- 60.0	6	11	- 45.5
Apparel, Textiles, Leather	618	825	- 25.1	910	890	+ 2.2
Lumber & Furniture	1,037	361	+187.3	1,054	383	+175.2
Printing, Publishing, Paper	1,402	1,021	+ 37.3	1,415	1,034	+ 36.3
Chemicals, Petroleum & Coal, Rubber	755	240	+214.6	1,006	495	+103.2
Stone, Clay & Glass	238	164	+ 45.1	244	177	+ 37.9
Primary Metals	937	1,772	- 47.1	937	1,772	- 47.1
Machinery & Metal Products, Equip.	3,877	1,883	+105.9	4,042	2,005	+101.6
Other	799	222	+259.9	799	222	+259.9

MAJOR NORTHERN KENTUCKY AREA MANUFACTURING FIRMS,
THEIR PRODUCTS AND EMPLOYMENT ^{4/}

Firm	Product	Employment		
		Total	Male	Female
<u>Boone County</u>				
<u>Florence</u>				
American Security Products Co.	Vault door safe products	100		
American Sign Industries, Inc.	Signs	168	105	63
Clow Corporation	Sewage treatment disposal plants, lift stations	150	125	25
Continental Division of Arrow-Hart, Inc.	Switchgear, motor control centers, bus ducts	250	215	35
Copying Products, Division of Clopay Corporation	Carbon paper, copy sets, electrostatic copying paper	169	148	21
Equitable Paper Bag Co., Inc.	Paper bags	250	160	90
Gamon-Calmet Industries, Inc.	Water meters	250	125	125
Globe Union, Inc.	Plastic battery containers covers	108	53	55

<u>Firm</u>	<u>Product</u>	<u>Employment</u>		
		<u>Total</u>	<u>Male</u>	<u>Female</u>
<u>Florence (cont.)</u>				
Grefco, Inc.	Roof insulation board	114	110	4
Husky Products, Inc.	Cable bus, cable trays	155	139	16
Lightcraft of Cal, Division of Scovill	Industrial lighting	100		
Lit-ning Products Company	Metal office furniture	100		
Litton U H S	Conveyor systems, cleaning and finishing equipment	375	350	25
National Industrial Containers, Inc.	Steel drums, fiber drums	100		
Queen City Dinettes, Inc.	Metal dinette sets	356	230	126
Signode Corporation	Strapping machine components fastener, strapping dispensers	150	142	8
Superior Furniture Mfg.	Wooden dinette furniture	100	70	30
Swedlow, Inc.	Plastics	148	138	10
<u>Kenton County</u>				
<u>Covington</u>				
Avey Machine Tool Company	Metalworking machinery	127	120	7
R. A. Jones & Co., Inc.	Cartoning machinery, soap presses	308	278	30
Ortner Freight Car Company	Railroad freight cars	258	250	8
Overhead Door Company of Kentucky	Parts for door assembly, electric door openers	140	65	75
The Stewart Decatur Security Systems, Inc.	Prison equipment, chain link wire fence, outdoor furniture	115	109	6
The Wadsworth Electric Mfg. Co., Inc.	Safety switches, circuit breakers, wiring trough, fuse boxes, power outlets	200		

(cont'd)

<u>Firm</u>	<u>Products</u>	<u>Employment</u>		
		<u>Total</u>	<u>Male</u>	<u>Female</u>
<u>Erlanger</u>				
The Michaels Art Bronze Co.	Architectural bronze aluminum, steel time-tight exhibit and display cases, bronze and aluminum, tablets, signs	102	97	5
Wadsworth Electric Mfg. Co.	Safety switches, circuit breakers, wiring trough, fuse boxes, power outlets	100	40	60
<u>Ludlow</u>				
Duro Paper Bag Mfg. Co.	Paper bags, plastic bags	550	330	220
<u>Campbell County</u>				
<u>Bellevue</u>				
Kent Corporation	Metal medicine cabinets	170	140	30
<u>Cold Spring</u>				
Disabled American Veterans	Miniature car tags	607	120	487
<u>Newport</u>				
Hyde Park Clothes, Inc.	Men's outerwear, slacks	400	100	300
Interlake, Inc.	Flat rolled steel sheets, coils, ERW line pipe	1,450	1,400	50
Palm Beach Co.	Cutting cloth, trimmings	100	50	50
The George Wiedemann Brewing Company	Malt beverages	503	480	23

WAGES

Wage information will be furnished, upon request, by the Kentucky Department of Commerce, Division of Research and Planning.

LABOR ORGANIZATIONS

<u>Company</u>	<u>Name of Union</u>
<u>Boone County</u>	
Grefco, Inc.	Int'l. Brotherhood of Pulp Sulphite and Paper
Globe Union, Inc.	Allied Industrial Workers
Husky Products, Inc.	Int'l. Brotherhood Bridge and Structural Iron
Hewitt Robbins, Inc.	Int'l. Brotherhood Bridge and Structural Iron
Lingo Manufacturing Co., Inc.	Int'l. Brotherhood Bridge and Structural Iron
Queen City Dinette, Inc. (Factory)	I. B. E. W.
Queen City Dinette, Inc. (Drivers)	Teamsters
Levi Strauss and Company	Teamsters
Square D Company (Factory)	I. B. E. W.
Square D Company (Drivers)	Teamsters
Superior Furniture Manufac- turing, Inc.	Communications workers of America
Skilcraft Sheet Metal, Inc.	Sheet Metal Workers
National Industrial Container, Inc.	Int'l. Brotherhood of Pulp Sulphite and Paper
Cincinnati Ventilating Co.	Int'l. Brotherhood of Bridge and Structural Iron
American Sign Industries, Inc.	Int'l. Sign, Display & Picture Artists
Continental Division of Arrow- Hart, Inc.	I. B. E. W.
Copying Products, Division of Clopay Corp.	Int'l. Printing Pressmen & Assts.
Equitable Paper Bag Company, Inc.	Int'l. Brotherhood of Pulp Sulphite and Paper
<u>Kenton County</u>	
J. P. Doppes & Son Lumber Co.	Shop Carpenters & Joiners
J. P. Doppes & Son Lumber Co.	Teamsters
Eaton Asphalt Paving Co.	Operating Engineers
Hellman Lumber, Inc.	Shop Carpenters & Joiners
Hellman Lumber, Inc. (Drivers)	Teamsters
Hilltop Concrete Co.	Teamsters
Ortner Freight Car Co.	Steel Workers of America

<u>Company</u>	<u>Name of Union</u>
<u>Kenton County</u> (cont'd)	
Overhead Door Co. of Kentucky Post Glover, Division of ESB, Inc.	Shop Carpenters & Joiners Int'l. Brotherhood Bridge and Structural Iron
Palm Beach Company Premier Industries, Inc. ServAll Foods, Inc. (Factory) ServAll Foods, Inc. (Drivers) Stewart Decatur Security Systems, Inc.	Amalgamated Clothing Workers Allied Industrial Workers Amalgamated Meat Cutters Teamsters Int'l. Brotherhood Bridge and Structural Iron Teamsters
U. S. Electric Tool Co. Wadsworth Electric Manu- facturing Co., Inc. Blue Grass Provision Co., Inc. (Factory) Blue Grass Provision Co., Inc. (Drivers) Coca Cola Bottling Co. Erlanger Lumber Co. (Drivers) Erlanger Lumber Co. (Shop) Impressive Mfg. Tri County Concrete Allied Lead, Inc.	I. B. E. W. Amalgamated Meat Cutters Teamsters Independent Soft Drink Workers Teamsters Shop Carpenters & Joiners Shop Carpenters & Joiners Teamsters United Assn. Journeymen & Apprentice Plumbers
Arnamac Products, Inc. Avey Machine Tool Co. R. A. Jones & Co., Inc. Capco Deluxe Generator Co. Duro Paper Bag Manufacturing Co. (Shopmen)	Int'l Assn. Machinists Ind. Shop Union Ind. Shop Union Allied Industrial Workers
Duro Paper Bag Manufacturing Co. Gibson Wine Co. Kinnaird Body Works, Inc. Klaene Foundry Co., Inc. Liberty Cherry & Fruit Co., Inc. Michaels Art Bronze Co.	Int'l. Brotherhood Pulp Sulphite and Paper Workers Teamsters Allied Industrial Workers Allied Industrial Workers Molder & Allied Workers Teamsters
Moeschl Edwards Co., Inc.	Int'l. Brotherhood of Bridge and Structural Iron Int'l. Brotherhood of Bridge and Structural Iron

CompanyName of UnionCampbell County

Kencabco Manufacturing, Inc.	Shop Carpenters & Joiners
Ling's Pastry Shop (Bakers only)	American Bakers & Confectioners
Clover Leaf Ice Cream, Inc.	Milk & Ice Cream Drivers and Dairy
Reliance Universal, Inc.	Int'l. Brotherhood Bridge and Structural Iron Workers
Feldman Dairy Farms, Inc.	Milk & Ice Cream Drivers and Dairy
Hagedorn Bakery (Bakers only)	American Bakers & Confectioners
Newport Concrete Co.	Teamsters
Otto Printing Co. (Printers)	Typographical
Palm Beach Co.	Amalgamated Clothing Workers
Scheper Woodworking Co.	Shop Carpenters & Joiners
The Stevens Company	Teamsters Sheet Metal Pipefitters Operating Engineers
Louis Trauth Dairy, Inc.	Milk & Ice Cream Drivers and Dairy
Vesper Printing, Inc. (Printers)	Typographical
Zonolite Construction Products, Division of W. R. Grace & Co.	Teamsters
Auto Vehicle Parts Co.	Allied Industrial Workers
W. J. Baker Co.	Allied Industrial Workers
Central Optical	Allied Industrial Workers
Ceramic Coating Co.	Shop Carpenters & Joiners
Hyde Park Clothes, Inc.	Amalgamated Clothing Workers
Interlake, Inc.	Steel Workers of America
Interlake, Inc. (Brick Dept.)	Building Trades Bricklayers
Kent Corp.	United Mine Workers
Mastercraft Metals Co., Inc.	Int'l. Ass'n. Sheet Metal Workers
George Wiedemann Brewing Co. (Except Machine Shop)	Bottle & Bottle Beer Drivers
George Wiedemann Co. (Machine Shop)	Int'l. Ass'n. of Machinists
Otto Zimmerman & Son Co., Inc.	Bookbinders & Bindery Women
Hilltop Concrete	Teamsters
Kentucky Cabinet & Sink Top, Inc.	Shop Carpenters & Joiners

CURRENT AND FUTURE LABOR SUPPLY
NORTHERN KENTUCKY AREA LABOR MARKET AREA

<u>Area</u>	<u>Current Labor Supply, 1972</u> ^{5/} (Becoming 18 Years of Age)			<u>Future Labor Supply by 1978</u> ^{6/}		
	<u>Total</u>	<u>Male</u>	<u>Female</u>	<u>Total</u>	<u>Male</u>	<u>Female</u>
Labor Market Area	27,059	10,679	16,380	29,338	14,982	14,356
Boone Co.	2,968	1,119	1,849	3,724	1,952	1,772
Kenton Co.	11,428	4,450	6,978	13,563	6,925	6,638
Campbell Co.	9,015	3,569	5,446	9,592	4,833	4,759
Gallatin Co.	800	300	500	411	206	205
Grant Co.	1,369	612	757	996	521	475
Pendleton Co.	1,479	629	850	1,052	545	507

TOTAL PERSONAL INCOME ^{7/}

<u>Area</u>	<u>1970</u>	<u>1960</u>	<u>% Change</u>
Boone County	\$ 90,893,000	\$ 26,013,000	+249.4
Kenton County	358,684,000	218,922,000	+ 33.3
Campbell County	228,479,000	171,353,000	+ 63.8
Labor Market Area	727,756,000	442,918,000	+ 64.3
Kentucky	9,719,647,000	4,779,695,000	+103.4

PER CAPITA PERSONAL INCOME ^{8/}

<u>Area</u>	<u>1970</u>	<u>1960</u>	<u>% Change</u>
Boone County	\$3,999	\$1,186	+237.2
Kenton County	3,498	1,814	+ 92.8
Campbell County	3,345	1,974	+ 69.5
Labor Market Area	\$1,800 to 3,999	\$1,082 to 1,974	N.A.
Kentucky	3,019	1,573	+ 91.9

EDUCATION

Vocational Schools

Nearest State School

Location	Northern Kentucky State Vocational-Technical School
Curriculum	Covington Data Processing, Clerical, Secretarial Marketing and Distributive Education Practical Nursing, Child Care Clothing Service, Food Service Learning Lab, Electronics (Technology) Air Conditioning and Refrigeration Auto Body Repair, Auto Mechanics Carpentry, Commercial Art, Welding Commercial Foods, Cosmetology, Drafting Machine Shop, Printing, Radio and TV Repair

Colleges and Universities

<u>Name</u>	<u>Area - Within 35 miles</u>		<u>Highest Degree Conferred</u>
	<u>Location</u>	<u>Enrollment</u>	
College of Mount St. Joseph on the Ohio	Cincinnati	794	Baccalaureate
Edgecliff College	Cincinnati	821	Baccalaureate
Hanover College	Hanover, Ind.	1,011	Baccalaureate
Hebrew Union College	Cincinnati	1,802	Ph. D.
Northern Kentucky State College	Highland Heights	4,200*	Baccalaureate
Salmon P. Chase College of Law	Covington		J. D.
Thomas More College	Ft. Mitchell	1,589	Baccalaureate
University of Cincinnati	Cincinnati	35,000	Ph. D., M. D., D. M. D., J. D.
Xavier University	Cincinnati	3,911	Masters

*Includes enrollment of Salmon P. Chase College of Law

TRANSPORTATION

Rail

Lines serving Boone, Kenton and Campbell Counties - Southern Railway System, Louisville & Nashville Railroad Company and The Chessie System

Services - Freight, siding, switching, piggyback service; REA Express

RAILWAY TRANSIT TIME FROM NORTHERN KENTUCKY AREA TO: ^{9/}

City	No. of Days		City	No. of Days	
	CL			CL	
Atlanta, Ga.	2		Los Angeles, Calif.	4	
Birmingham, Ala.	2		Louisville, Ky.	1	
Chicago, Ill.	2		Nashville, Tenn.	2	
Cincinnati, Ohio	1		New Orleans, La.	3	
Cleveland, Ohio	2		New York, N. Y.	4	
Detroit, Mich.	3		Pittsburgh, Pa.	3	
Knoxville, Tenn.	1		St. Louis, Mo.	3	

Truck Service

Approximately 80 common carriers have authority to serve the Northern Kentucky Area.

HIGHWAY MILES AND TRUCK TRANSIT TIME IN DAYS FROM COVINGTON, KENTUCKY, TO SELECTED MARKET CENTERS

City	Highway Miles	Delivery Time ^{10/}		City	Highway Miles	Delivery Time	
		LTL	TL			LTL	TL
Atlanta, Ga.	459	2	1	Los Angeles, Calif.	2,186	5	4
Birmingham, Ala.	474	2	1	Louisville, Ky.	93	2	1
Chicago, Ill.	295	2	1	Nashville, Tenn.	288	2	1
Cincinnati, Ohio	0.5	same day		New Orleans, La.	818	5	3
Cleveland, Ohio	246	2	1	New York, N. Y.	661	3	2
Detroit, Mich.	267	2	1	Pittsburgh, Pa.	286	2	1
Knoxville, Tenn.	272	2	1	St. Louis, Mo.	340	2	1

Air

Nearest Commercial

Location: Greater Cincinnati Airport
Florence, Kentucky

Runways: 3 paved

Length: 5,500 ft. ; 7,800 ft. ; 9,500 ft.

Traffic Control: Tower: Guards, ground control, clearance delivery, approach control, departure control; CVG ILS 109.9, approach bearing 360; outer marker 287, ILS 111.5, approach bearing 180^o, outer marker 351, ATIS (Automatic Terminal Information Service) 117.3, RVR, runway 18-36; radar available

Lighting: Beacon, high intensity runway approach slope, REIL RW9, boundary sequenced flasher and obstruction lights, Red T bar located 8630' N of RW18, center line and touchdown; zone lights RW-18 and RW-36

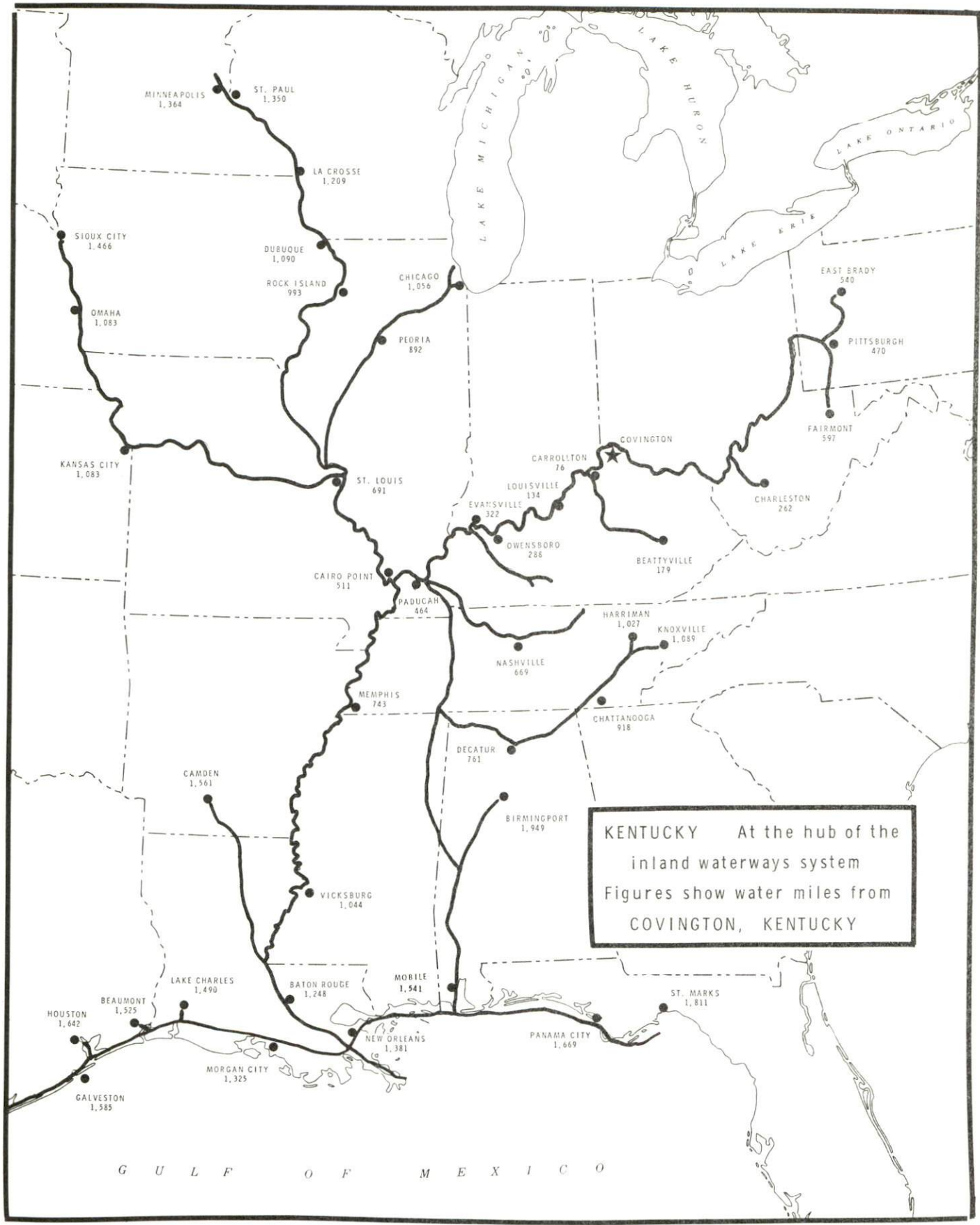
Services: Fuel 115/145 or lower, 650 turbine; storage; major A & E repairs; hotel; restaurant; TWA, Delta, American, Piedmont, Allegheny, Eastern, North Central; airport limousine, taxi; Weather Bureau

Water

In the jurisdiction of the Northern Kentucky River Port Authority and its environs are 7 private and 1 public river terminals with an additional 34 private and 3 public river terminals available on the Cincinnati side of the Ohio River.

Some of the contract and common carriers operating in the Northern Kentucky Area include: Valley Lines Company, American Barge Lines, Union Barge Lines, Mechling Barge Lines, Arrow Transportation Company, Ohio River Company, Ohio Barge Lines and Sioux City - New Orleans Barge Lines.

Barge Lines with offices in the Northern Kentucky Area include: Valley Lines Company and Ohio River Company.



AGRICULTURE - NATURAL RESOURCES - CLIMATE

Agriculture 11/

	<u>Northern Kentucky Area</u>	<u>Labor Market Area</u>
Total land area (acres)	360,704	764,086
Percent of area in farm land	62.6	131.7
Number of farms	2,476	5,303
Average size of farms (acres)	91.1	189.7
1969 value of all farm products	\$10,312,250	\$ 24,217,396
Value per farm	4,165	4,567
Total crop sales	4,184,591	12,574,391
Total livestock & livestock products	6,081,158	11,571,536
1970 agricultural production included:		
Burley tobacco (lbs.)	4,622,000	16,155,000
Corn (bu.)	321,000	544,000
Cattle and calves (number)	36,700	88,300
Hogs and pigs (number)	16,500	22,700
Milk production, 1969 (lbs.)	56,420,000	128,850,000

Natural Resources

Principal mineral resources	Sand and gravel
Other mineral resources	Limestone, clay deposits of commercial significance
Acres of commercial forest land	44,300
Most abundant tree species	White oak, red oak, hickory, ash, hard maple, red cedar, black walnut

Climate 12/

	<u>Northern Kentucky Area</u>
Temperature	
Annual mean (30-year record)	53.4 degrees
Average annual 1971	54.6 degrees
Record highest, August, 1962 (10-year record)	102.0 degrees
Record lowest, January, 1963 (10-year record)	-19.0 degrees
Seasonal heating degree days (30-year record)	5,265
Precipitation	
Mean annual total (30-year record)	38.02 inches
Mean annual snow and sleet (24-year record)	24.0 inches
Total precipitation 1971	40.66 inches
Mean number days precipitation, (.01 inch or more) (24-year record)	127
Average number days thunderstorms (24-year record)	44
Prevailing winds (16-year record)	South-southwest

BOONE COUNTY

LOCAL EDUCATION

Public Schools

	<u>Walton-Verona Independent</u>	<u>Boone County</u>
Total Enrollment	892	7,447
Elementary	472	4,007
Junior High	--	1,975
High School	420	1,465
Student-Teacher Ratio	25-1	22-1
Elementary	24-1	25-1
Junior High	--	22-1
High School	26-1	18-1
State Rating of High School	Standard	Comprehensive (1) Standard (1)
Other Accreditations		The Southern Association of Colleges and Schools
Percent High School Graduates to College	23.5	42.4
Current Expenditures Per Pupil	\$572.01	\$523.75
Bonded Indebtedness, June 30, 1972	\$1,018,000	\$7,586,000

Non-public Schools

Total Enrollment	532
Elementary	532
Student-Teacher Ratio	21-1
Elementary	21-1

LOCAL TRANSPORTATION

	<u>Florence</u>	<u>Walton</u>	<u>Boone County</u>
<u>Bus</u> -	The Cincinnati, Newport & Covington Transportation Company Southern Grey- hound Bus Lines	Southern Greyhound Bus Lines	--
<u>Taxi</u> -	One company 24-hour service	--	--
<u>Rental Services</u> -	--	--	Eight car and truck rentals in the area

POWER AND FUEL

Electricity

Companies serving Boone County - (1) Union Light, Heat and Power Company;(2) Owen County RECC

Source of power - (1) Cincinnati Gas and Electric Company; (2) East Kentucky Power Cooperative

Total generating capacity - (1) 2,737,000 KW;* (2) 584,000 KW

Industrial rates will be furnished by the Union Light, Heat and Power Company, Covington, Kentucky, a subsidiary of the Cincinnati Gas and Electric Company, P.O. Box 960, Cincinnati, Ohio; Owen County RECC, Owenton, Kentucky.

Natural Gas

Company serving Boone County - Union Light, Heat and Power Company

Source of supply - Kentucky Gas Transmission Corporation

Size of transmission mains - 2 to 24 inches (supplier); 2 to 24 inches (distributor)

Distribution mains - 2 to 24 inches

Distribution pressure - up to 60 psi

Btu content - 1,020

Specific gravity - .60

Rates: Rates will be furnished by the Union Light, Heat and Power Company, Covington, Kentucky, a subsidiary of the Cincinnati Gas and Electric Company, P.O. Box 960, Cincinnati, Ohio.

Other Fuels

Propane Distributors - 7

Distillate Fuel Oil Distributors - 31

Residual Fuel Oil - Arrangements must be made with the refinery.

*Generating capacity figures based on a 15 percent reserve.

WATER AND SEWERAGE

Water

Company serving Florence - Florence Water and Sewer Commission
Source of supply of treated water - Kenton County Water District No. 1
Amount of treated water which can be purchased in a 24-hour period -
3,400,000 gallons
Average daily consumption - 909,400 gallons
Peak daily consumption - 1,200,000 gallons
Type treatment - Pre-chlorination, flocculation, sedimentation,
filtration, post-chlorination
Storage capacity - 500,000 gallons
Size mains - 6, 8, and 12 inches
Average pressure - 40 to 50 psi
Average temperature - 64° F.

MONTHLY WATER RATES FOR WHOLESALE AND INDUSTRIAL CONSUMERS

Inside City

First	300 cubic feet	\$4.40 (Minimum)
All over	300 cubic feet	.70 per 100 cubic feet

Outside City

First	300 cubic feet	\$5.50 (Minimum)
All over	300 cubic feet	1.00 per 100 cubic feet

Company serving Walton - Walton Water Works

Source - 2 impounded lakes
Treatment plant capacity - 288,000 gpd
Average daily consumption - 120,000 gallons
Peak daily consumption - 150,000 gallons
Type treatment - P H control, filtering, chlorine, coagulation, settling
Storage capacity - 300,000 gallons
Size mains - 2, 4, and 6 inches
Average pressure - 85 psi
Average temperature - 72° F.

MONTHLY WATER RATES FOR WHOLESALE
AND INDUSTRIAL CONSUMER

First	2,000 gallons	\$4.57 (Minimum)
Next	3,000 gallons	1.20 per 1,000 gallons
Next	5,000 gallons	1.00 per 1,000 gallons
Next	5,000 gallons	.90 per 1,000 gallons
Next	10,000 gallons	.80 per 1,000 gallons
Next	25,000 gallons	.70 per 1,000 gallons
Next	50,000 gallons	.60 per 1,000 gallons
All over	100,000 gallons	.50 per 1,000 gallons

Name of water district - Boone County Water District

Area served - Boone County except for Walton, Florence and a segment of Southern Boone County

Date when water district began operating - November 1968

Source of supply of treated water - Covington Water Works

Amount of water which can be purchased in a 24-hour period - 1,440,000 gallons

Average amount of water used in a 24-hour period - 252,000 gallons

Peak amount of water used in a 24-hour period - 308,123 gallons

Storage capacity - 600,000 gallons

Average pressure - 85 psi

Average temperature - 65° F.

Size mains - 2, 4, 6, 8, 12, 16, and 20 inches

Rates - Monthly

First	3,000 gallons	\$9.00 (Minimum Bill)
Next	2,000 gallons	2.50 per 1,000 gallons
Next	5,000 gallons	2.25 per 1,000 gallons
Over	10,000 gallons	1.50 per 1,000 gallons

The above rates exclude the surcharge of \$1.50 per bill.

Name of water district - Bullock Pen Water District

Area served - Crittenden, Verona and Dry Ridge

Date when water district began operating - 1962

Source of raw water - Bullock Lake

Capacity of treatment plant - 300,000 gpd

Type of treatment - rapid sand

Average amount of water used in a 24-hour period - 200,000 gallons

Peak amount of water used in a 24-hour period - 300,000 gallons

Storage capacity - 294,000 gallons

Average pressure - 80 to 100 psi

Size mains - 3, 4, 6, and 8 inches

Rates - Monthly

First	3,000 gallons monthly, or less	\$9.00 (Minimum Bill)
Next	2,000 gallons	2.25 per 1,000 gallons
Next	5,000 gallons	2.00 per 1,000 gallons
Over	10,000 gallons	1.00 per 1,000 gallons

Surface water sources - Ohio and Licking Rivers, several small streams

Average discharge - Ohio River at Cincinnati 96,810 cfs (23 years, USGS);

Licking River at Catawba 4,018 cfs (44 years, USGS)

Expected ground water yield - 500 to 1,000 gpm along Ohio River; 5 to

50 gpm along Licking River; 5 gpm or less over remainder of county

Sewerage

Company serving Florence - Florence Water and Sewer Commission

Design capacity - 1,000,000 gpd

Average daily flow - 900,000 gallons

Treatment - Primary and secondary

Type treatment - Primary settling, trickling filter, secondary settling,
chlorine, sludge digester and drying beds

Treated effluent discharged into - Gunpowder Creek

Size of sanitary mains - 8 to 18 inches

Rates - one-half monthly water bill

Company serving Boone County - Kenton and Campbell Counties Sanitation

District No. 1

Design capacity - 20,000,000 gpd

Average daily flow - 14,000,000 gallons

Treatment - Primary

Type treatment - Grit removal, pre-chlorination, sedimentation,
filtration, pre-aeration, and dewatered sludge incineration

Treated effluent discharged into - Ohio River

Size of sanitary mains - 8 to 60 inches

Monthly rates -

800 cu. ft. or less		\$2.88 (Minimum)
801 cu. ft. to	5,000 cu. ft.	.29 per 100 cu. ft.
5,001 cu. ft. to	25,000 cu. ft.	.23 per 100 cu. ft.
25,001 cu. ft. to	100,000 cu. ft.	.18 per 100 cu. ft.
100,001 cu. ft. to	400,000 cu. ft.	.13 per 100 cu. ft.
400,001 cu. ft. to	1,000,000 cu. ft.	.095 per 100 cu. ft.
1,000,001 cu. ft. to	2,500,000 cu. ft.	.06 per 100 cu. ft.
All over	2,500,000 cu. ft.	.035 per 100 cu. ft.

LOCAL GOVERNMENT

City

Florence

Structure - Mayor - 4-year term; 12 councilmen - 2-year terms

Budget 1972 - General Fund \$443,302; Water and Sewer Fund
\$690,850

Fees and licenses - Occupational license - \$25 per year

Walton

Structure - Mayor - 4-year term; 6 councilmen - 2-year terms

Budget 1971 (July 1 - December 31) - General Fund \$38,025; Water
Fund \$27,853

Fees and licenses - Occupational licenses vary from \$15 to \$50 per
year; auto tax \$5 per year

County

Structure - County Judge - 4-year term; 3 magistrates - 4-year terms

Budget 1972-73 - General Fund \$462,021; Road Fund \$291,000

Assessed Value of Property, 1972

<u>Classes of Property</u> *	<u>Florence</u>	<u>Walton</u>	<u>Boone County</u>
Real Estate	\$76,266,900	\$6,468,660 (1971)	\$209,337,665
Tangibles	7,121,740	1,251,275 (1971)	89,831,720
Public Service		1,179,434	31,801,598 (1971)

Local General Property Tax Rates Per \$100 of Assessed Valuation, 1972 13/

<u>Taxing Unit</u> **	<u>Florence</u>	<u>Walton</u>	<u>Boone County</u>
State	\$.015	\$.015	\$.015
County	.180	.180	.180
School	.640	1.039	.640
City	.285	.400	
Total	\$1.120	\$1.634	\$.835

*Property assessed at 100 percent of fair value.

**Manufacturing machinery, raw materials inventories and goods in process
inventories are not subject to local tax. State rate is only \$.15 per \$100.

Utilities Gross Receipts Tax for Schools

Boone County levies a 3 percent tax on utilities receipts for schools. The tax is paid by all consumers of utilities. Exempted are receipts from utilities services that are resold and the receipts from the sale of energy or energy producing fuels that exceed 3 percent of the cost of production in manufacturing, processing, mining or refining.

Planning and Zoning

Agency - Boone County Planning Commission
Zoning Enforced - all areas
Subdivision Regulations Enforced - all areas
Local Codes Enforced - building
Mandatory State Codes Enforced - Plumbing, National Fire Protection Association Codes, National Building Code

Safety

<u>Police</u>	<u>Florence</u>	<u>Walton</u>	<u>Boone County</u>	
			<u>Police</u>	<u>Sheriff</u>
Total staff	10	2	6	6
Radio-patrol cars	4	2	5	3

Fire

American Insurance Association Fire Rating 7 & 9 7

Full-time staff

Volunteers 40 20

Equipment:

1, 250 gpm pumper	1	
750 gpm pumpers	2	1
500 gpm pumpers	1	1
ladder truck		1
van truck	1	
1, 500 gal. tank truck		1

Rescue Service

Florence Rescue Squad:
Number of volunteers - 48
Equipment - First Aid kit, van, saws, fans, ladders, air packs, porto-power, generator, lights, winch
Personnel training - First Aid, fire training

Walton Life Squad

Number of volunteers - 25

Equipment - Ambulance

Personnel training - First Aid, Emergency Medical Training

Boone County Rescue Squad

Number of volunteers - 25

Equipment - 25 two-way radios, motor communications truck

Personnel training - First Aid, law enforcement

Sanitation

	<u>Florence</u>	<u>Walton</u>	<u>Boone County</u>
Type service	Private	Private	Private
Cost			
residential	\$3.20 per month	\$1.00 per month	\$2.30 per month
business	Contracted	\$1.00 per month	According to volume
Collection frequency			
residential	Twice weekly	Once weekly	Contracted
business	Twice weekly	Once weekly	Contracted
Trash pickup	Twice weekly	Once weekly	Contracted
Disposal method	Land fill	Land fill	Land fill

HEALTH

Hospitals

The residents of Boone County are served by the two general hospitals in Covington.

Nursing Homes

	<u>Number</u>	<u>Beds</u>
Personal care home (multi-purpose home)	1	50

Public Health

Facility - Boone County Health Department

Staff - One assistant administrator, two registered nurses, two sanitarians, two clerks, one plumbing inspector (part-time) and one nutritionist (part-time)

Budget - 1972-73 - \$68,977

OTHER LOCAL FACILITIES

Communications

	<u>Florence</u>	<u>Walton</u>
Telephone - Services -	Cincinnati Bell Telephone Company Standard	Cincinnati Bell Telephone Company Standard
Telegraph - Services -	Western Union Telephone, messenger, mail	Western Union Telephone, messenger, mail
Postal - U. S. Post Office Class - Mail received - Mail dispatched -	First 3 times daily 3 times daily	Second 1 time daily 1 time daily
Newspapers -	Dixie News	Walton Advertiser 1,800 Boone County Recorder - 4,300
Weekly and circulation - Other papers received from	14,000 Burlington & Louisville, Kentucky; Cincinnati, Ohio	Louisville, Kentucky; Cincinnati, Ohio
Radio - Stations received -	WLW-AM WHKK-FM WNOP-AM WKRC-AM WCLU-AM WSAI-AM & FM & FM WCNW-AM WUBE-AM & FM & FM WEBN-FM WWEZ-FM WFIB-AM WZIP-AM	WLW-AM WHKK-FM WNOP-AM WKRC-AM WCLU-AM WSAI-AM & FM & FM WCNW-AM WUBE-AM & FM & FM WEBN-FM WWEZ-FM WFIB-AM WZIP-AM
Television - Reception from -	WLWT Channel 5 (NBC) WCPO Channel 9 (CBS) WKRC Channel 12 (ABC) WXIX Channel 19	WLWT Channel 5 (NBC) WCPO Channel 9 (CBS) WKRC Channel 12 (ABC) WXIX Channel 19
Kentucky Educational Television -	WCUN Channel 54 WCET Channel 48 29.	WCUN Channel 54 WCET Channel 48

Library Services

Library services for the residents of Boone County are provided by the Kenton County Public Library located in Covington.

Religious Institutions

	<u>Florence</u>	<u>Walton</u>
Number of churches -	9	6
Denominations -	Baptist	Baptist
	Catholic	Catholic
	Christian	Christian
	Church of Christ	Church of God
	Church of God	Methodist
	Disciples of Christ	Nazarene
	Episcopal	
	Methodist	

Number of synagogues in Cincinnati, Ohio - 16; Type congregation - orthodox, reform traditional and conservative

Financial Institutions

<u>Bank</u>	<u>Statement as of December 31, 1971</u>	
	<u>Assets</u>	<u>Deposits</u>
Peoples Deposit Bank	\$10,120,789	\$ 8,948,510
Florence Deposit Bank	13,878,151	12,730,531

	<u>Statement as of June 30, 1972</u>	
	<u>Assets</u>	<u>Deposits</u>
Boone State Bank	\$ 2,544,919	\$ 1,934,408
Dixie State Bank	7,077,539	6,378,857
Hebron Deposit Bank	8,534,464	7,569,995
Union Bank	2,374,980	2,175,340
Verona Bank	1,587,546	1,381,547

<u>Savings and Loan Association</u>	<u>Statement as of March 31, 1971</u>	
	<u>Assets</u>	<u>Shared Accounts</u>
Florence Building & Loan Association, Inc.	\$ 1,367,912	\$ 1,291,458

Hotels and Motels

Total number - 8
Units - 273

Clubs and Organizations

Boone County

Business and Civic - Chambers of Commerce, Jaycees, Rotary, Kiwanis, Lions, Optimists, Retail Merchants Association, Business Men's Club, Home Builders Association of Northern Kentucky, Real Estate Boards, Retail Grocers Association

Fraternal - Elks, Odd Fellows, Masonic, VFW, American Legion, Fraternal Order of Eagles, Moose, Knights of Pythias, Junior OVAM, Knights of Columbus

Women's - Woman's Club, Junior Woman's Auxiliary, Garden Club, Art Club, Literary Club, YWCA, Baker-Hunt Foundation, Eastern Star, League of Women Voters, Business Sororities, Homemakers

Youth - Girl Scouts, Boy Scouts, Boys Club, Listening Post, Little League Football, Basketball and Baseball, Bob White Club

Other - PTA, Red Cross, others

RECREATION

Local

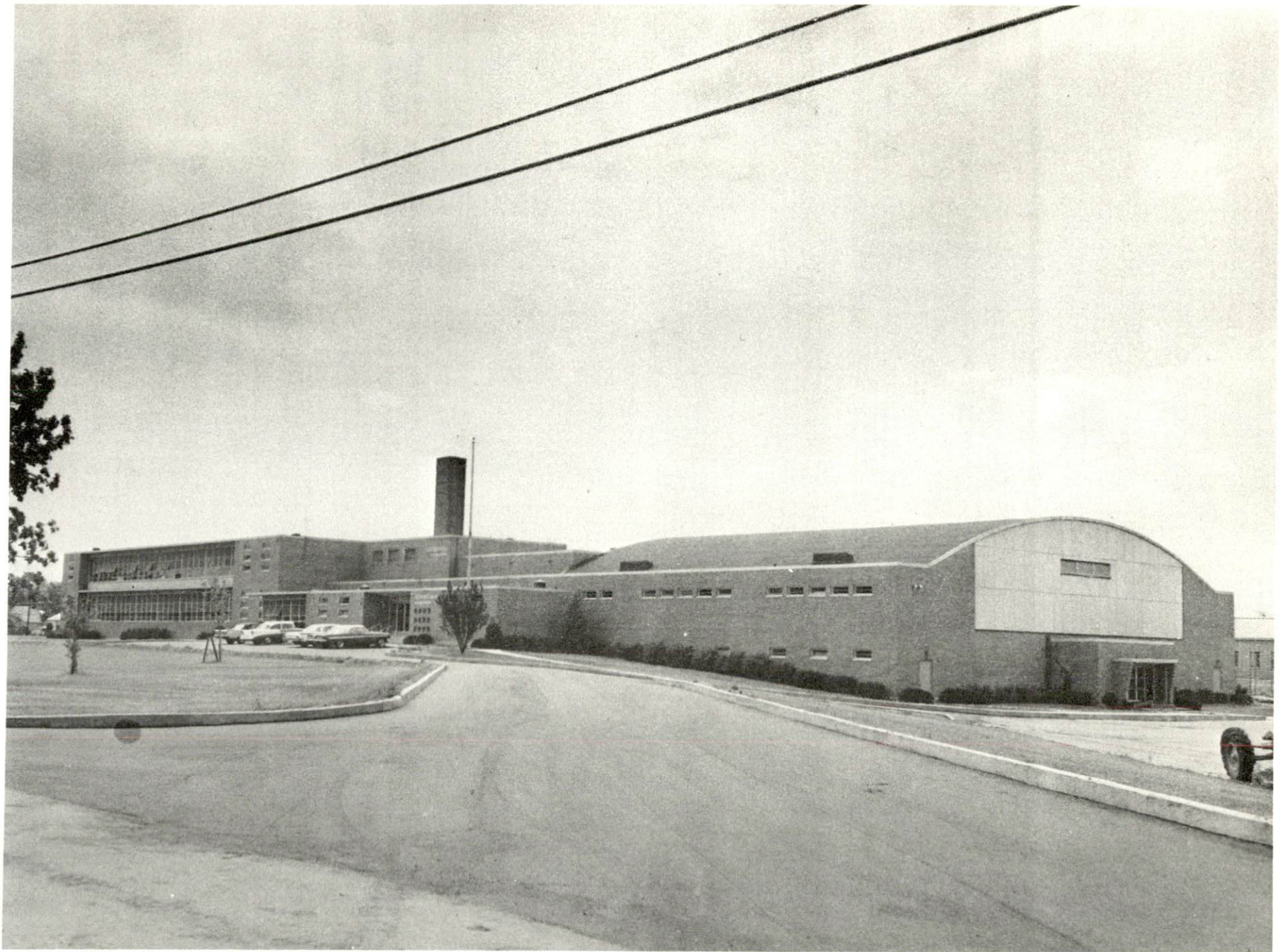
	<u>Florence</u>	<u>Walton</u>
Public Recreation Facilities		
Supervised program -	Yes	
Parks -	2	
Playgrounds -	1	1
Swimming pool	1 indoor (YMCA)	1
Golf courses -	2 (1 18-hole 1 9-hole)	
Tennis courts -	4	
Baseball diamonds -	6	3
Football field -	1	
Private Recreation Facilities		
Country club -	1	
Golf course -	1 (18-hole)	
Swimming pool -	1	
Movie theater -	1 drive-in	
Bowling lane -		1 (6 lanes)
Other -	YMCA	
Tourist Attractions		
Latonia Race Track		
Annual Governor's Cup Hydroplane Regatta		
Cultural Events		
The Greater Northern Kentucky and Cincinnati Area offers a wide variety of entertainment		

Area (Within 25 miles)

Big Bone Lick State Park
 Kings Island Amusement Park
 Riverview Amusement Park
 Devou Park
 Campbell County Park



BIG BONE STATE PARK



BOONE COUNTY HIGH SCHOOL
FLORENCE, KENTUCKY

HISTORY

Boone County, the thirtieth county formed in Kentucky, contains 249 square miles and dates from 1798. Its territory was taken from Campbell County. The Ohio River flows along its northern and western sides. Starting near the town of Grant, a giant bend in the river protrudes westward then curves south and eastward to Hamilton forming a huge nose to associate with the high forehead north of Grant through Petersburg to Veneeda in the northernmost part of Kentucky. These curves in the river mark a geographical boundary line that resembles the profile of a human face looking westward. No geographical formation could more completely reflect the spirit of Daniel Boone, for whom the county was named, than this human likeness which looks out over Western Kentucky as if longing to explore unknown areas beyond the Mississippi. The surface of the county is generally hilly with some level spaces back from the escarpment that lies along the river. Most of the land is tillable, and the soil is fairly fertile. Numerous small streams in the county flow into the Ohio River.

Boone County contains evidence of the Adena culture. A large number of earthenware vessels, copper bracelets, pendants, rings, and breastplates have been found in earth mounds and radioactive carbon tests indicate an age of over 1,200 years.

The first white visitors to come to Boone County included a French Captain named Longueil who discovered Big Bone Lick in 1739. In 1751 Robert Smith carried two teeth of a mastadon from the place for Christopher Gist who wanted to give his employer a memento from the west. Some five years later Mrs. Mary Ingels was taken there by the Indians, from whom she made a dramatic escape. Thomas Bullitt, James Douglas, and James Harrod made a survey of Big Bone Lick in 1773, which was followed the next year by a survey made by John Floyd.

The first settlement was made in 1783 at Petersburg by Robert Tanner, a Baptist preacher. Two years later John Hindman, William West, John Seft and their families arrived from Pennsylvania. Tanner's Station, later known as Petersburg, consisted of a blockhouse and stockyard and soon became the nucleus of a thriving river trade.

During the Civil War John Hunt Morgan's Raiders, while on a reconnoitering expedition, were opposed by a larger Federal command under General Lew Wallace at Florence in the eastern part of Boone County. Morgan's forces were able to rout Wallace's men by the spirited manner of their attack.

Boone County was named for Daniel Boone, a native of Exeter Township near Reading, Pennsylvania. He came to Kentucky via the Yadkin River Valley in North Carolina.

Burlington, the county seat, is 848 feet above sea level and was incorporated in 1824. When Boone County was organized John Craig and Robert Johnson donated 74 acres for a county seat site. Burlington is located in a prosperous farm trading center which produces grain, tobacco, and other agricultural products.

The 1850 population of Boone County was 11,185. The population fluctuated until it reached its 1910 level of 9,420. From 1910 the population of Boone County rapidly grew, reaching 32,82 in 1970.

Agriculture accounted for 640 of the county's 9,820 employed in 1971, with corn, burley tobacco, cattle and hogs the principal products. Manufacturing employment increased from 156 in 1962 to 3,318 in 1972. There are 18 major industrial firms in Boone County.

The Greater Cincinnati Airport at Florence is served by six major airlines which provide over 100 flights daily to all parts of the country. Interstate highways afford other modern transportation to the area.

Major John P. Gaines served five terms in the Kentucky Legislature, fought in the Mexican War, represented his district in the United States Congress, and was territorial Governor of Oregon at the time of his death in 1853. John U. Lloyd wrote Stringtown on the Pike which depicted the locale of Florence, his native town.