

1970

## Industrial Resources: Bourbon County - Paris

Kentucky Library Research Collections  
Western Kentucky University, [spcol@wku.edu](mailto:spcol@wku.edu)

Follow this and additional works at: [https://digitalcommons.wku.edu/bourbon\\_cty](https://digitalcommons.wku.edu/bourbon_cty)

 Part of the [Business Administration, Management, and Operations Commons](#), [Growth and Development Commons](#), and the [Infrastructure Commons](#)

---

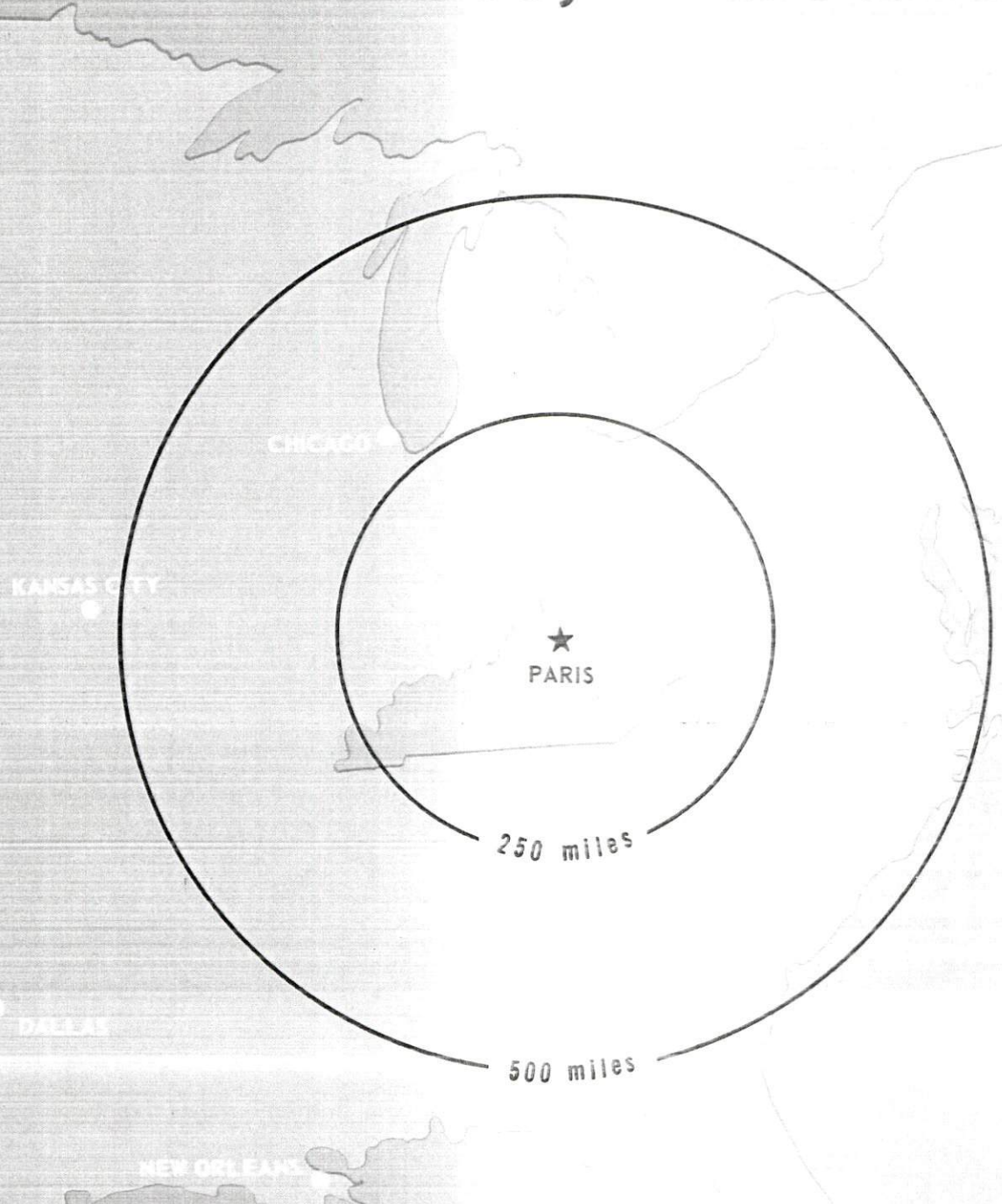
### Recommended Citation

Kentucky Library Research Collections, "Industrial Resources: Bourbon County - Paris" (1970). *Bourbon County*. Paper 13.  
[https://digitalcommons.wku.edu/bourbon\\_cty/13](https://digitalcommons.wku.edu/bourbon_cty/13)

This Report is brought to you for free and open access by TopSCHOLAR®. It has been accepted for inclusion in Bourbon County by an authorized administrator of TopSCHOLAR®. For more information, please contact [topscholar@wku.edu](mailto:topscholar@wku.edu).

# INDUSTRIAL RESOURCES

## **PARIS, KENTUCKY**



# CURRENT INDUSTRIAL RESOURCES

## CURRENT INDUSTRIAL RESOURCES, PARIS, KENTUCKY

This is a 1971 supplement to "Industrial Resources, Paris, Kentucky" which was published in 1970.

### Population

	<u>1970</u>	<u>1960</u>
Paris	7,823	7,791
Bourbon County	18,476	18,178
Labor Market Area	273,594	222,814
(Includes Bourbon, Bath, Clark, Fayette, Harrison, Montgomery, and Scott Counties.)		

### General Employment Characteristics

<u>Industry</u>	<u>Employment 1969</u>	
	<u>Bourbon County</u>	<u>Labor Market Area</u>
TOTAL	6,600	128,600
Agricultural	1,500	9,600
Nonagricultural	5,100	119,000
Manufacturing	1,100	26,608
Trade and Services	1,247	35,759
Government	1,000	25,650

### Manufacturing Employment

<u>Type Industry</u>	<u>Bourbon County</u>			<u>Labor Market Area</u>		
	<u>1970</u>	<u>1960</u>	<u>% Change</u>	<u>1970</u>	<u>1960</u>	<u>% Change</u>
TOTAL	981	873	+12.4	26,259	13,604	+ 93.0
Food & kindred products	19	17	+11.8	1,402	1,597	- 12.2
Tobacco	4	37	-89.2	1,094	1,287	- 15.0
Apparel, textiles, leather	686	417	+64.5	3,196	1,560	+104.9
Lumber & furniture	5	35	-85.7	608	369	+ 64.8
Printing, publishing, paper	23	23	--	1,413	884	+ 59.9
Chemicals, petroleum, coal, rubber	0	0	--	1,069	141	+658.2
Stone, clay & glass	6	33	-81.8	481	538	- 10.6
Primary metals	0	0	--	935	300	+211.7
Machinery & metal products	238	311	-23.5	15,155	6,625	+128.8
Other	0	0	--	906	303	+199.0

There are presently 12 manufacturing firms in Bourbon County. Major firms, employment, and year started operations:

<u>Firms</u>	<u>Employment</u>	<u>Year Started Operations</u>
Blue Grass Industries	292	1966
Hansley, Inc.	457	1942
Dura Corporation	199	1952

Labor Supply

	<u>Bourbon County</u>			<u>Labor Market Area</u>		
	<u>Total</u>	<u>Male</u>	<u>Female</u>	<u>Total</u>	<u>Male</u>	<u>Female</u>
Current	606	192	414	7,488	4,051	3,437
Potential additions next five years	2,193	1,135	1,058	30,088	15,265	14,823

Personal Income

Bourbon County, 1969: Total - \$50,584,000; Per Capita - \$2,780  
 1959: Total - \$24,749,000; Per Capita - \$1,436

Education

The Bourbon County School System includes 1 high school with comprehensive rating, 1 junior high school, and 6 elementary schools.

The Paris Independent School District includes 1 high school with comprehensive rating, and 3 elementary schools.

Nearest Area Vocational School: Lexington, 15 miles distant

Courses offered: General Clerical, Secretarial-Steno, Practical Nursing, Electronics (Communications), Auto Body Repair, Auto Mechanics, Commercial Foods, Drafting, Electricity, Machine Shop, Office Machine Repair, Printing, Radio & TV Repair, Sheet Metal, Welding

Power and Fuel

Electric Distributors

Paris Light & Power Department  
 Kentucky Utilities Company  
 Clark RECC  
 Harrison County RECC

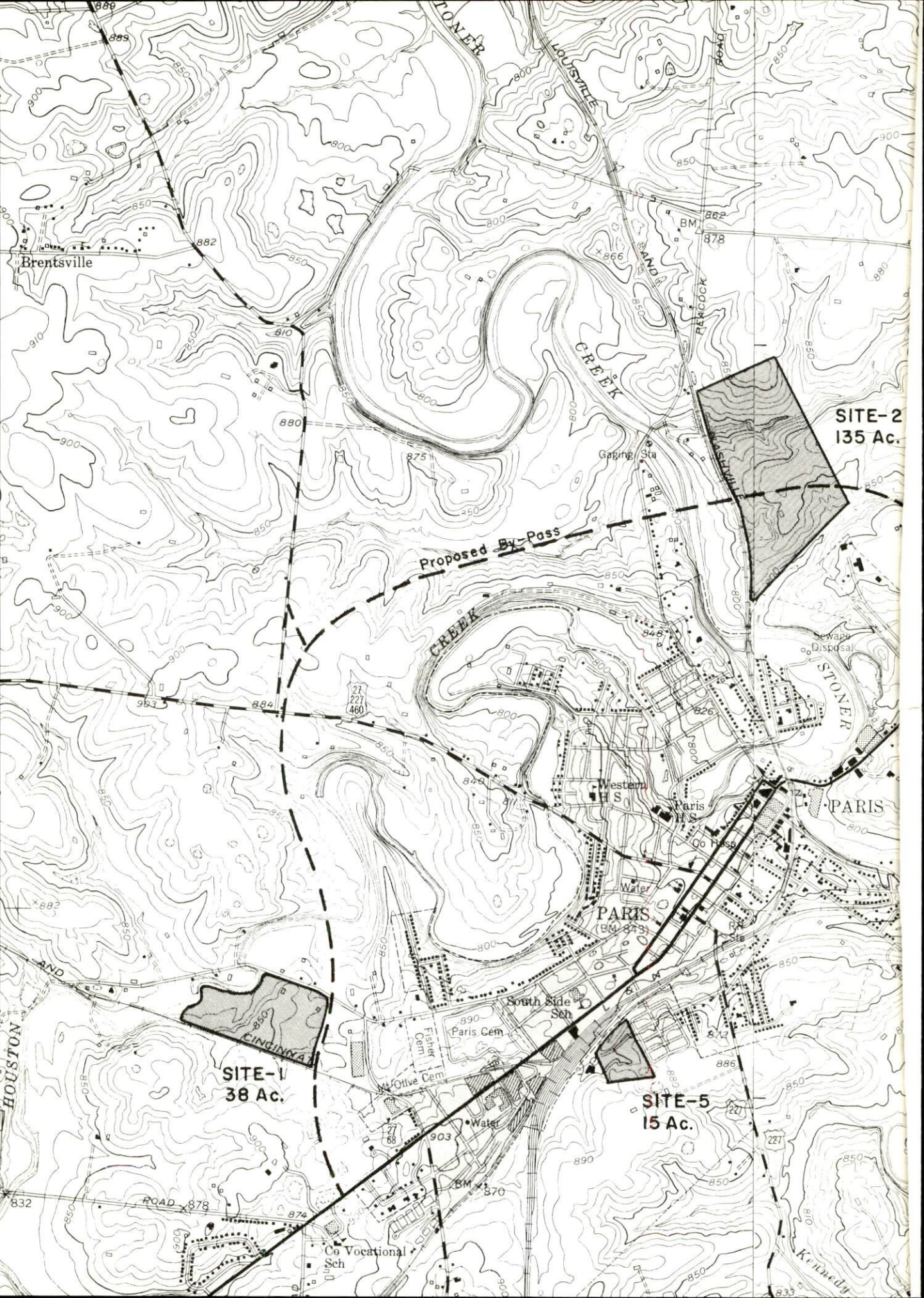
Source of Supply

Paris Light & Power Department  
 Kentucky Utilities Company  
 Kentucky Utilities Company  
 East Kentucky Power Cooperative  
 East Kentucky Power Cooperative

PARIS INDUSTRIAL SITES  
1971

For additional information concerning the following sites, contact Mr. James Prater, Paris Industrial Promotion Corporation, Paris, Kentucky; or the Kentucky Department of Commerce, Frankfort, Kentucky.

- SITE #1: ACREAGE: 38 acres  
LOCATION: West Paris, within city limits  
ZONING: Industrial  
HIGHWAY ACCESS: Fronts on Fords Mill Road; approximately 800 feet from U. S. 27 and 68  
RAILROADS: Louisville & Nashville Railroad borders on south  
WATER: Paris Water and Sewer Department  
SIZE LINE: 8-inch line, approximately 100 yards from site  
GAS: Columbia Gas Company  
SIZE MAIN: 6-inch main, approximately 100 yards from site  
ELECTRICITY: Kentucky Utilities Company  
SEWERAGE: Paris Water and Sewer Department  
OWNERSHIP: City of Paris
- SITE #2: ACREAGE: 135 acres  
LOCATION: North of Paris, adjacent to city limits  
ZONING: Industrial  
HIGHWAY ACCESS: U. S. 68 one-fourth mile from site, paved access road  
RAILROADS: Louisville & Nashville Railroad on southwest boundary  
WATER: Paris Water and Sewer Department  
SIZE LINE: 6-inch line, approximately 100 yards from site  
GAS: Columbia Gas Company  
SIZE MAIN: 4-inch main, approximately 100 yards from site  
ELECTRICITY: Kentucky Utilities Company  
SEWERAGE: Paris Water and Sewer Department, approximately 100 yards from site  
OPTIONED BY: Bourbon County Fiscal Court
- SITE #3: ACREAGE: 383 acres  
LOCATION: 1 1/2 miles northeast of Paris  
ZONING: Industrial  
HIGHWAY ACCESS: U. S. 68 borders site on west-southwest  
RAILROADS: Louisville & Nashville Railroad through site  
WATER: Nearest line 1 1/2 miles from site  
GAS: Nearest line 1 1/2 miles from site  
ELECTRICITY: Kentucky Utilities Company  
SEWERAGE: Package plant necessary  
OPTIONED BY: Paris Industrial Promotion Corporation
- SITE #4: ACREAGE: 13 acres  
LOCATION: Within city limits  
ZONING: Industrial  
HIGHWAY ACCESS: Access road from site to U. S. 68  
RAILROADS: Louisville & Nashville Railroad along eastern boundary  
WATER: Paris Water and Sewer Department SIZE LINE: 8-inch  
GAS: Columbia Gas Company SIZE MAIN: 2-inch  
ELECTRICITY: Paris Municipal Light and Power Company  
SEWERAGE: Paris Water and Sewer Department  
OWNERSHIP: Farmers Tobacco Warehouse Corporation
- SITE #5: ACREAGE: 15 acres  
LOCATION: Within city limits  
ZONING: Industrial  
HIGHWAY ACCESS: Access road to U. S. 227  
RAILROADS: Louisville & Nashville Railroad on site  
WATER: Paris Water and Sewer Department SIZE LINE: 2-inch  
GAS: Columbia Gas Company SIZE MAIN: 2-inch  
ELECTRICITY: Paris Municipal Light and Power Company  
SEWERAGE: Paris Water and Sewer Department  
OWNERSHIP: Louisville & Nashville Railroad Company



Brentsville

SITE-2  
135 Ac.

Proposed By-Pass

Sewage Disposal

PARIS

PARIS (BM 873)

South Side Sch

SITE-1  
38 Ac.

SITE-5  
15 Ac.

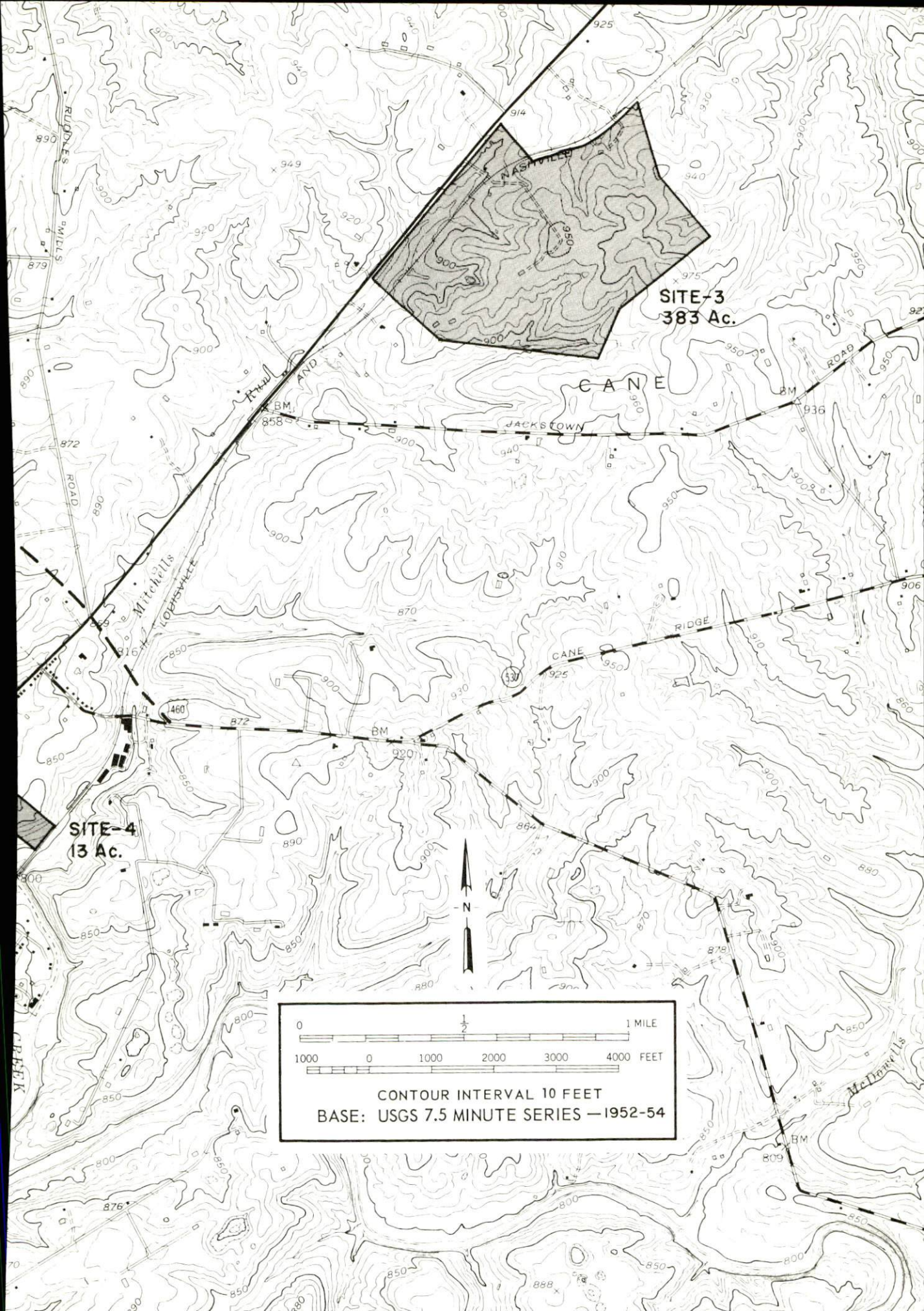
Paris Cem

Olive Cem

Water

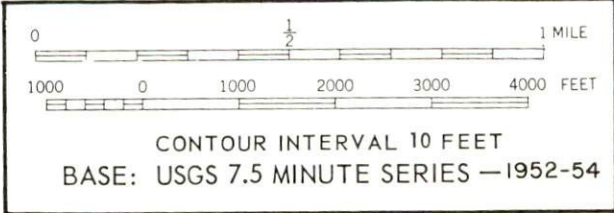
Co Vocational Sch

Kennedy



**SITE-3**  
**383 Ac.**

**SITE-4**  
**13 Ac.**



<u>Natural Gas Distributor</u>	<u>Specific Gravity</u>	<u>Btu Per Cu. Ft.</u>
Columbia Gas of Kentucky	.06	1,030

Current gas rates:

First	1,000 cu. ft.	\$2.4126
Next	49,000 cu. ft.	.9226 per M cu. ft.
Next	50,000 cu. ft.	.8926 per M cu. ft.
Next	100,000 cu. ft.	.8526 per M cu. ft.
Next	800,000 cu. ft.	.8326 per M cu. ft.
All over	1,000,000 cu. ft.	.8126 per M cu. ft.
Minimum OMCF		\$2.30

Water and Sewerage

Water: Daily treatment capacity - 3,000,000 gallons; average daily use - 1,200,000 gallons; maximum daily use - 1,500,000 gallons; storage capacity - 1,450,000 gallons; size distribution lines - 4, 6, and 8 inches.

Sewerage: Type treatment - clarifier and drying beds; design capacity - 1,400,000 gallons per day or a population of 14,000; size of sewer mains - 8, 12, and 15 inches.

Local Government

Property Tax Rates

Property tax rates per \$100 of assessed valuation, 1971:

	<u>Paris</u>	<u>Bourbon County</u>
State	\$ .015	\$ .015
County	.211	.211
School	.750	.475
City	.250	
Total	\$1.226	\$ .701

Police Protection

	<u>City</u>	<u>County</u>
Number of law enforcement officers	25	7



Fire Protection

Number of full-time firemen - 14

Number of volunteer firemen - 15

American Insurance Association fire rating, City of Paris - Class 6

Industrial Sites

There are five sites available for industrial use in Paris.

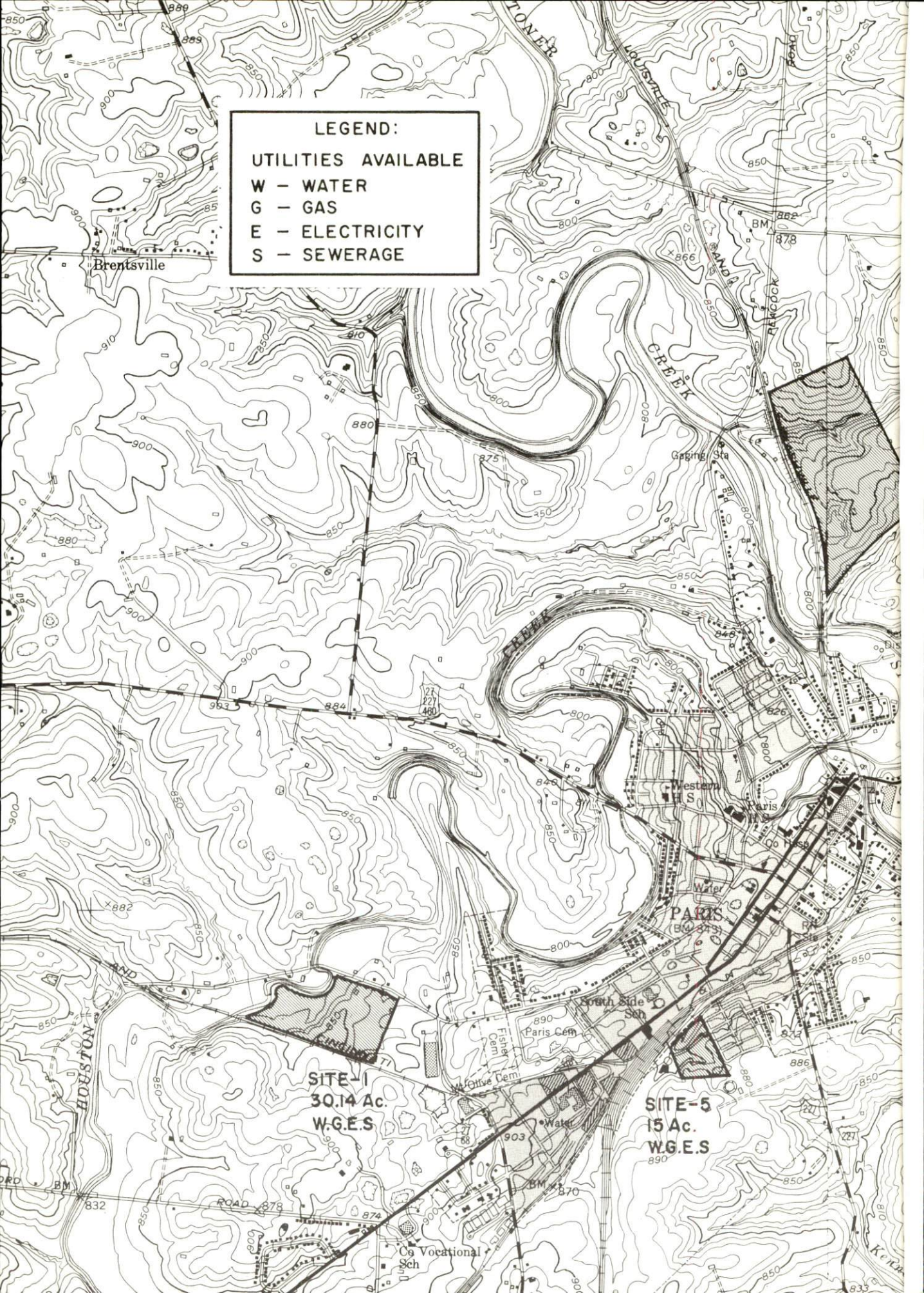
## PARIS INDUSTRIAL SITES

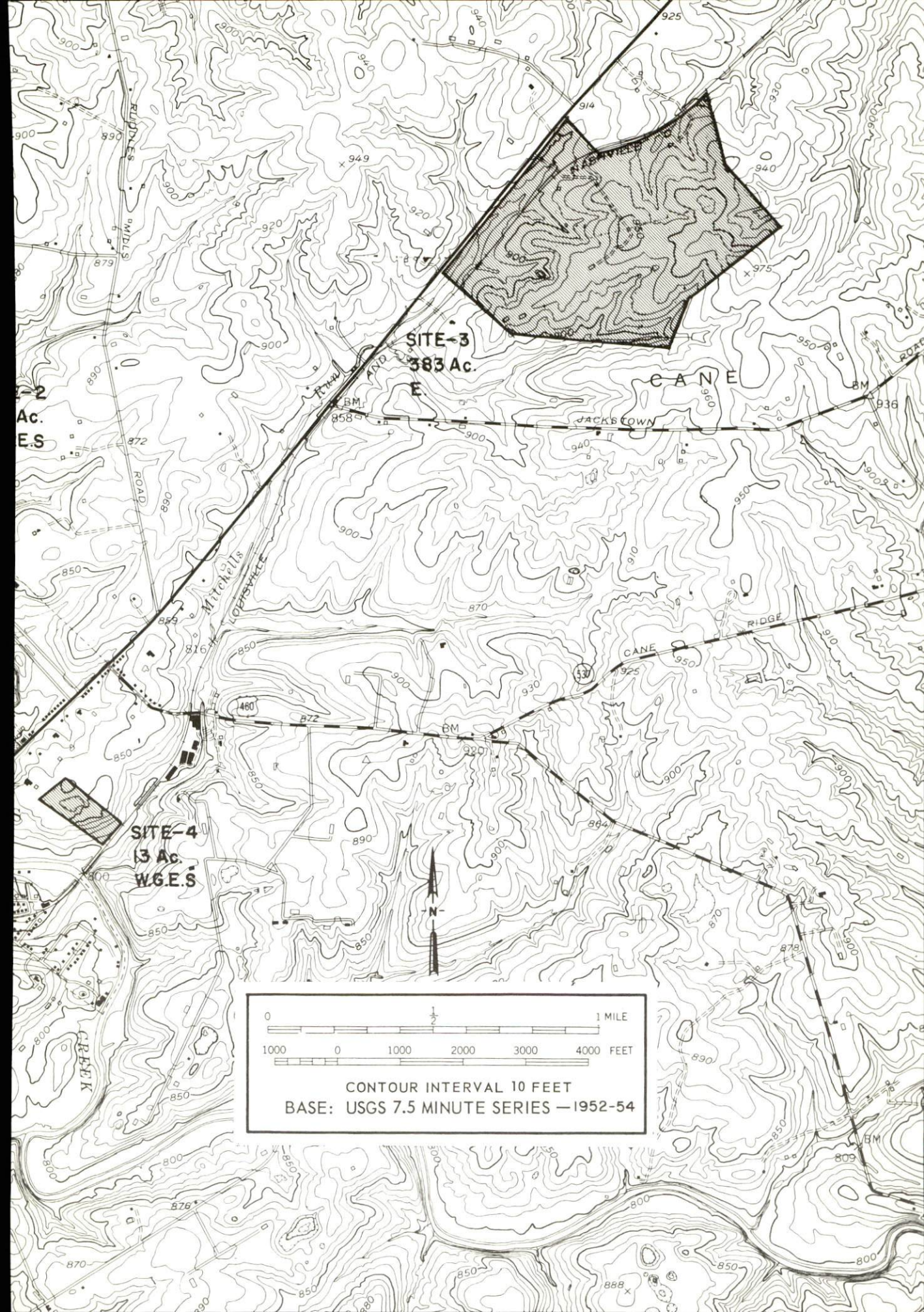
1970

For additional information concerning the following sites, contact Mr. James Prater, Paris Industrial Promotion Corporation, Paris, Kentucky, or the Kentucky Department of Commerce, Frankfort, Kentucky.

- SITE #1: ACREAGE AND TOPOGRAPHY: 30.14 acres, gently rolling  
LOCATION: West Paris, within city limits  
ZONING: Industrial  
HIGHWAY ACCESS: Fronts on Fords Mill Road; approximately 800 feet from U.S. 27 and 68  
RAILROADS: Louisville & Nashville Railroad borders on south  
WATER: Paris Water and Sewer Department  
SIZE LINE: 8-inch line, approximately 100 yards from site  
GAS: Columbia Gas Company  
SIZE LINE: 6-inch main, approximately 100 yards from site  
ELECTRICITY: Kentucky Utilities Company  
SEWERAGE: Paris Water and Sewer Department  
OWNERSHIP: City of Paris
- SITE #2: ACREAGE AND TOPOGRAPHY: 135 acres, rolling  
LOCATION: North of Paris, adjacent to city limits  
ZONING: Industrial  
HIGHWAY ACCESS: U.S. 68 one-fourth mile from site, paved access road  
RAILROADS: Louisville & Nashville Railroad on southwest boundary  
WATER: Paris Water and Sewer Department  
SIZE LINE: 6-inch line, approximately 100 yards from site  
GAS: Columbia Gas Company  
SIZE LINE: 4-inch main, approximately 100 yards from site  
ELECTRICITY: Kentucky Utilities Company  
SEWERAGE: Paris Water and Sewer Department, approximately 100 yards from site  
OPTIONED BY: Bourbon County Fiscal Court
- SITE #3: ACREAGE AND TOPOGRAPHY: 383 acres, gently rolling  
LOCATION: 1 1/2 miles northeast of Paris  
ZONING: Industrial  
HIGHWAY ACCESS: U.S. 68 borders site on west-southwest  
RAILROADS: Louisville & Nashville Railroad through site  
WATER: Nearest line 1 1/2 miles from site  
GAS: Nearest line 1 1/2 miles from site  
ELECTRICITY: Kentucky Utilities Company  
SEWERAGE: Package plant necessary  
OPTIONED BY: Paris Industrial Promotion Corporation
- SITE #4: ACREAGE AND TOPOGRAPHY: 13 acres, gently rolling  
LOCATION: Within city limits  
ZONING: Industrial  
HIGHWAY ACCESS: Access road from site to U.S. 68  
RAILROADS: Louisville & Nashville Railroad along eastern boundary  
WATER: Paris Water and Sewer Department SIZE LINE: 8-inch  
GAS: Columbia Gas Company SIZE LINE: 2-inch  
ELECTRICITY: Paris Municipal Light and Power Company  
SEWERAGE: Paris Water and Sewer Department  
OWNERSHIP: Farmers Tobacco Warehouse Corporation
- SITE #5: ACREAGE AND TOPOGRAPHY: 15 acres, level to gently rolling  
LOCATION: Within city limits  
ZONING: Industrial  
HIGHWAY ACCESS: Access road to U.S. 227  
RAILROADS: Louisville & Nashville Railroad on site  
WATER: Paris Water and Sewer Department SIZE LINE: 2-inch  
GAS: Columbia Gas Company SIZE LINE: 2-inch  
ELECTRICITY: Paris Municipal Light and Power Company  
SEWERAGE: Paris Water and Sewer Department  
OWNERSHIP: Louisville & Nashville Railroad Company

**LEGEND:**  
**UTILITIES AVAILABLE**  
**W - WATER**  
**G - GAS**  
**E - ELECTRICITY**  
**S - SEWERAGE**





Ac.  
E.S

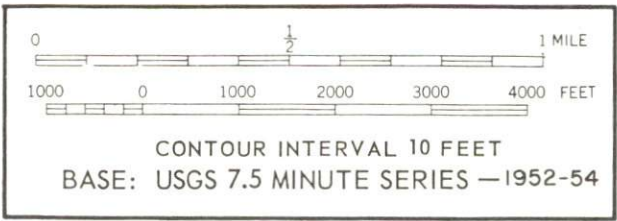
SITE-3  
383 Ac.  
E

SITE-4  
13 Ac.  
W.G.E.S

CANE

JACKSON

CANE RIDGE



INDUSTRIAL RESOURCES

PARIS, KENTUCKY

Prepared by

The Kentucky Department of Commerce

in cooperation with

Paris-Bourbon County Chamber of Commerce

1970

## TABLE OF CONTENTS

<u>Chapter</u>	<u>Page</u>
INDUSTRIAL SITES . . . . .	i
PARIS, KENTUCKY - A RESOURCE PROFILE . . . . .	1
THE LABOR MARKET . . . . .	5
Population Trends . . . . .	5
General Employment Characteristics, 1968. . . . .	5
Manufacturing Employment Trends by Industry . . . . .	6
Bourbon County Manufacturing Firms, Their Products and Employment . . . . .	6
Wage Rates for Selected Occupations . . . . .	7
Labor Organizations . . . . .	9
Current and Future Labor Supply . . . . .	9
Total Personal Income . . . . .	9
Per Capita Personal Income . . . . .	9
EDUCATION . . . . .	10
Public Schools . . . . .	10
Parochial, Private and Special Schools . . . . .	10
Vocational Schools . . . . .	11
Colleges and Universities . . . . .	11
TRANSPORTATION . . . . .	12
Rail . . . . .	12
Truck Service . . . . .	12
Air . . . . .	13
Bus . . . . .	13
Taxi . . . . .	13
Rental Service . . . . .	13
POWER AND FUEL . . . . .	14
Electricity . . . . .	14
Natural Gas . . . . .	14
WATER AND SEWERAGE . . . . .	15
Water . . . . .	15
Sewerage . . . . .	16

<u>Chapter</u>	<u>Page</u>
LOCAL GOVERNMENT . . . . .	17
City . . . . .	17
County . . . . .	17
Assessed Value of Property, 1969 . . . . .	17
Local General Property Tax Rates Per \$100 of Assessed Valuation, 1969 . . . . .	17
Planning and Zoning . . . . .	18
Safety . . . . .	18
Police . . . . .	18
Fire . . . . .	18
Rescue Service . . . . .	18
Sanitation . . . . .	19
HEALTH . . . . .	20
Hospitals . . . . .	20
Nursing Homes . . . . .	20
Public Health . . . . .	20
OTHER LOCAL FACILITIES . . . . .	21
Communications . . . . .	21
Library Services . . . . .	21
Religious Institutions . . . . .	21
Financial Institutions . . . . .	22
Hotels and Motels . . . . .	22
Clubs and Organizations . . . . .	22
RECREATION . . . . .	25
Local . . . . .	25
Area . . . . .	25
AGRICULTURE - NATURAL RESOURCES - CLIMATE . . . . .	26
Agriculture . . . . .	26
Natural Resources . . . . .	26
Climate . . . . .	26
HISTORY . . . . .	27





## PARIS, KENTUCKY - A RESOURCE PROFILE

### Location

Paris, the county seat of Bourbon County, is located in central Kentucky in the heart of the Blue Grass region. Established in 1785, Bourbon County is rich in history and tradition, and is noted for its beautiful horse farms. Paris is 15 miles from Lexington, Kentucky; 90 miles from Louisville, Kentucky, and 79 miles from Cincinnati, Ohio.

Due to community effort and participation in county-wide activities, Paris was designated an All-Kentucky City in 1969.

Paris has a 1970 population of 7,656 with population of Bourbon County at 18,035.

### The Economic Framework

Total employment in Bourbon County averaged 6,665 jobs in 1968, with manufacturing providing 1,065 jobs, trade and services 1,165, and government 1,015. During the first nine years of the decade, manufacturing employment increased by 20.6 percent. The county's major products are apparel and motor vehicle parts.

Per capita income in the county in 1968 was \$2,377. This figure is slightly below the Kentucky average.

In the Bourbon County labor market area, which includes Bourbon County and its seven surrounding counties, total employment in 1968 averaged 129,085. Manufacturing provided 25,770 of these jobs, while trade and services provided 35,130. A large percentage of the area employment is found in the Fayette County area. Area industrial employment is heaviest in the machinery and metal products industries.

Despite important industrial gains in recent years, the area still has a deficit of 1,751 manufacturing jobs when measured against the national industrial employment-population ratio. This indicates an area where the potential for additional manufacturing is excellent.

## Resources For Growth

1. There is a current estimated labor supply of 3,275 men and 3,260 women available for industrial jobs in the labor market area. In addition, 12,110 young men and 11,740 young women in the area will have become 18 years of age by 1976 and potentially available for work.

2. The local transportation capability is good. Interstate 64 is 15 miles southeast of Paris and Interstate 75 is 8 miles west of Paris. The Louisville & Nashville Railroad serves Bourbon County with a variety of services. Commercial air service is available at Lexington, 15 miles distant.

3. Energy - both gas and electricity - is available in large quantity. The local water supply from Stoner Creek, is more than adequate for continued growth.

4. Industrial sites - Paris has four available industrial sites.

5. Education - Millersburg Military Institute, a private military academy, is located 8 miles from Paris. The University of Kentucky and Transylvania University are located 15 miles distant. In addition, there are two other universities, five senior colleges, and three junior colleges within a 60-mile radius of Paris.

## Community Programs For Improvement

Paris' designation as an All-Kentucky city in 1969 was the result of successful community programs.

Recent community improvements include: two new city-owned parking lots, the YMCA remodeled and expanded at the cost of \$270,000, one new indoor and one new outdoor Olympic size swimming pool added, new city Memorial Park, \$106,000 spent remodeling the public library, the federal building purchased by the city and remodeled for the city hall offices, improved sewerage and water system installed, a new subdivision, remodeled bank, a city-county recreation commission organized, new building for savings and loan association, county-wide planning and zoning commission authorized, a new Fine Arts building (cafeteria, auditorium, and music rooms) completed in 1968, a football field renovated, and completion of a \$1,500,000 county junior high school. Two low-income areas are under the slum clearance and urban renewal program.

Planned improvements are: a by-pass around the business section of Paris to be completed in 1971, 4-lane highway - Paris to Lexington by mid-1974, a Comprehensive Day Care Center, a new 100-unit high-rise for the elderly, 30-classroom addition to the elementary schools, a greenhouse for the agriculture department, an addition to the Bourbon County High School, and a six-classroom addition to the Southside Elementary School.

### Recreation, Entertainment and Livability

Garrard Park, located on a 30-acre tract along Stoner Creek, includes two shelter houses, playground equipment, ovens and grills, tennis courts, picnic areas supplied with benches and tables, a lighted baseball diamond and grandstand, a football field, and a lighted softball field with stands. A recreation supervisor is on duty during the summer months.

The American Legion Park has an exhibition hall and show ring. Events at the park include horse shows and the annual Bourbon County Fair.

The Stoner Creek Country Club, a private club, has a 9-hole golf course, swimming pool, tennis courts and a clubhouse.

The YMCA provides indoor sports including swimming plus an outdoor Olympic pool. A health club is being added. Two full-time supervisors are employed.

The Teen Square Club is managed by a recreational director and open on the week-ends during the school months and on Tuesday and Friday evenings during the summer.

The public school ground facilities include a baseball diamond, and tennis and volleyball courts. The playgrounds are used after school and during the summer.

The Hanson Street Youth Center offers indoor recreation including ping-pong, pool, dancing, and various group games. There are swings, slides, and basketball goals provided on the playground.

There is a 16-lane bowling alley, a downtown movie theatre and a drive-in theatre.

Keeneland Race Course in Lexington, one of America's most beautiful tracks, offers excellent Thoroughbred racing during the spring and fall meets.

The world famous Big Red Mile, home of the Lexington Trots, is one of America's foremost trotting tracks.

Several riding clubs and hunt clubs are in the area.

The University of Kentucky, Lexington, for many years has had among the best in basketball teams and an invigorating football schedule.

## THE LABOR MARKET

### POPULATION TRENDS <sup>1/</sup>

	Population			Percent Change	
	1970	1960	1950	1960-70	1950-60
Paris	7,656	7,791	6,912	- 1.7	+12.7
Labor Market Area	278,454	229,491	201,240	+21.3	+14.0
Bourbon County	18,035	18,178	17,752	- 0.8	+ 2.4
Bath County	9,041	9,114	14,410	- 0.8	-36.8
Clark County	24,473	21,075	18,898	+16.1	+11.5
Fayette County	172,927	131,906	100,746	+31.1	+30.9
Harrison County	14,300	13,704	13,736	+ 4.3	- 0.2
Montgomery County	15,226	13,461	13,025	+13.1	+ 3.3
Nicholas County	6,379	6,677	7,532	- 4.5	-11.4
Scott County	18,073	15,376	15,141	+17.5	+ 1.6

### GENERAL EMPLOYMENT CHARACTERISTICS, 1968 <sup>2/</sup>

Major Employment Group	Employment	
	Bourbon County	Labor Market Area
TOTAL	6,664	129,083
Agricultural	1,743	12,115
Nonagricultural	4,921	116,968
Manufacturing	1,069	25,771
Trade and Services	1,165	35,130
Government	1,013	25,441

MANUFACTURING EMPLOYMENT TRENDS BY INDUSTRY  
SEPTEMBER 1959 AND 1969 <sup>3/</sup>

Industry	Bourbon County			Labor Market Area		
	1969	1959	% Change	1969	1959	% Change
TOTAL	1,136	942	+20.6	27,025	14,866	+ 81.8
Food & Kindred						
Products	18	17	+ 5.9	1,566	1,795	- 12.8
Tobacco	9	35	-74.3	999	1,365	- 26.8
Apparel, Textiles,						
Leather	810	420	+92.9	4,094	2,017	+ 27.4
Lumber & Furniture	10	35	-71.4	567	445	+ 27.4
Printing, Publishing,						
Paper	22	21	+ 4.8	1,381	756	+ 82.7
Chemicals, Petroleum,						
Coal, Rubber	0	0		1,150	139	+727.3
Stone, Clay & Glass	10	35	-71.4	496	663	- 25.2
Primary Metals	0	0		841	201	+318.4
Machinery & Metal						
Products	257	379	-32.2	14,608	7,197	+103.0
Other	0	0		1,323	288	+359.4

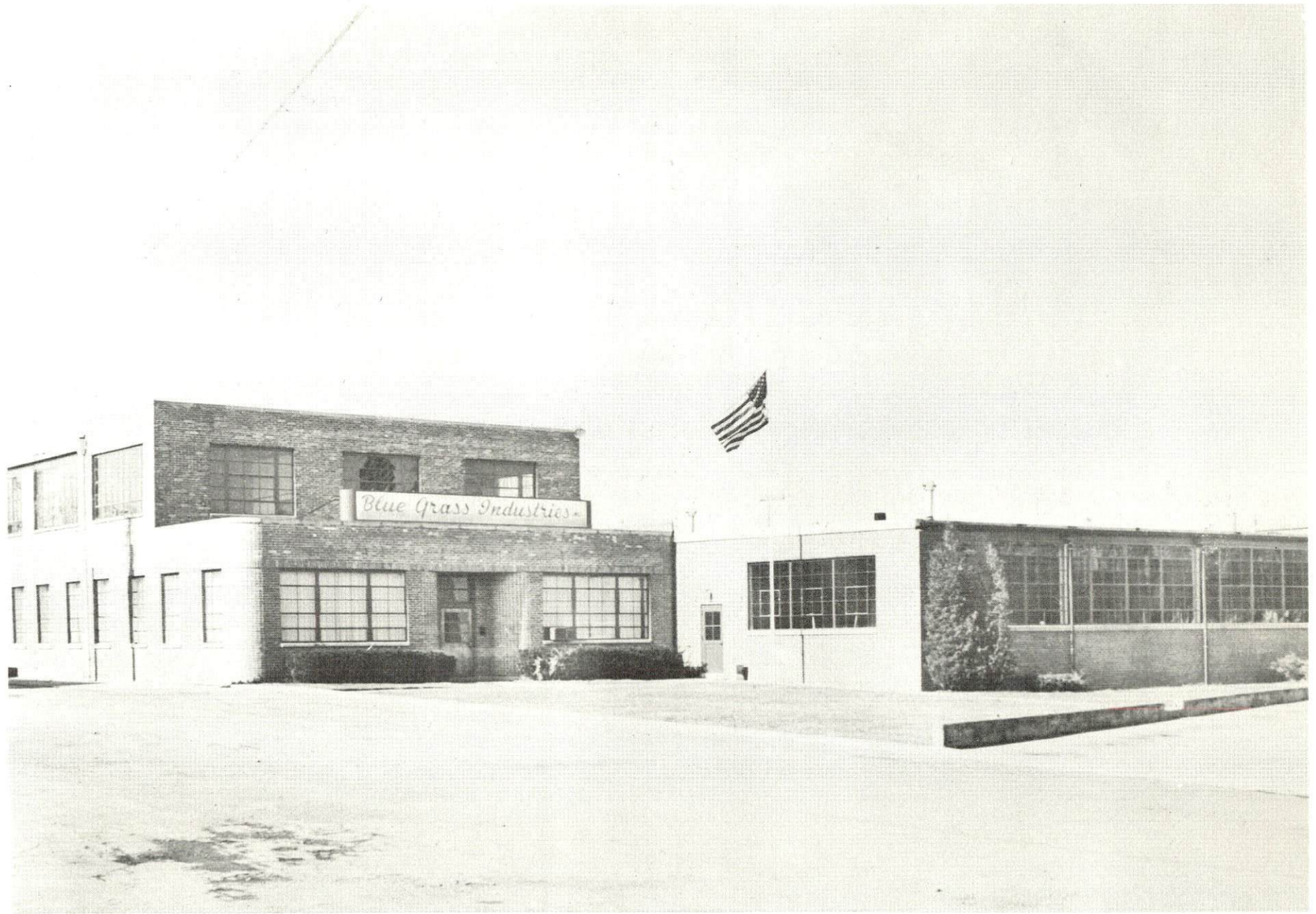
BOURBON COUNTY MANUFACTURING FIRMS,  
THEIR PRODUCTS AND EMPLOYMENT <sup>4/</sup>

Firm	Product	Employment		
		Total	Male	Female
<u>Paris</u>				
Blue Grass Industries	Men's underwear, knit garments, bath kilts	400	25	375
Bourbon Packing Co.	Meat processing	3	3	0
Gay-Bell Corp.	Metal stampings, prefabricated con- tainers	27	25	2
The Grapette Bottling Co.	Carbonated beverages	18	18	0
Hansley, Inc.	Men's, boys' underwear; boys' and girls' gym clothing; terry robes and jackets	416	41	375
Industrial Products Division, Dura Corp., Walter Kidde & Co., Inc.	Hydraulic cooling pumps and power take offs, motor vehicle parts, tandem trailer suspensions, hydraulic systems for hospital beds	199	187	12

Firm	Product	Total	Male	Female
The Kentuckian-Citizen Co.	Newspaper, letterpress printing	3	2	1
Luckys Machine Shop	Machine shop	3	3	0
The Paris Daily Enterprise	Newspaper, job printing	20	12	8
Snapp Printing Co.	Job printing	1	1	0
Woodford Spears & Sons	Feed & seed	32	30	2
<u>Millersburg</u>				
The W. R. Stamler Corp.	Conveyor belt feeder-breakers, hydraulic mine & R.R. car movers	45	42	3

WAGE RATES FOR SELECTED OCCUPATIONS  
PARIS, KENTUCKY 5/

Classification	Wages Per Hour		
	Starting	Maximum	Prevailing
<u>Production Employees</u>			
Lathe Operator	\$2.58	\$2.81	\$2.70
Machine Operator	2.47	2.64	2.55
Assembler	2.41	2.64	2.53
Inspector	2.41	2.70	2.60
Production Worker	2.24	2.41	2.30
Welder, Arc or Acetylene (Class-A)	2.58	2.92	2.75
<u>Service Employees</u>			
Electrician (Class-A)	\$2.91	\$3.13	\$3.00
Laborer	2.29	2.41	2.35
Mechanic, Maintenance	2.91	3.25	3.00
Truck Driver, Industrial (Class-A)	2.47	2.78	2.68
Tool & Die Maker	3.64	4.19	3.90
<u>Office Employees</u>			
Bookkeeper	\$1.75	\$2.25	\$2.00
File Clerk		2.00	1.75
Receptionist	1.65	2.00	1.80
Secretary	1.75	2.50	2.20
Typist	1.60	1.85	1.75



Blue Grass Industries



LABOR ORGANIZATIONS

<u>Union</u>	<u>Representing Workers at:</u>
Allied Industrial Workers of America	Dura Corporation

CURRENT AND FUTURE LABOR SUPPLY -  
BOURBON COUNTY LABOR MARKET AREA

County	Current Labor Supply <sup>6/</sup> 1970			Future Labor Supply by 1976 <sup>7/</sup> (Becoming 18 Years of Age)		
	Total	Male	Female	Total	Male	Female
Labor Market Area	6,534	3,274	3,260	23,851	12,111	11,740
Bourbon	537	150	387	1,835	908	927
Bath	1,087	618	469	923	460	463
Clark	791	361	430	2,190	1,132	1,058
Fayette	1,884	1,059	825	14,053	7,123	6,930
Harrison	434	183	251	1,322	652	670
Montgomery	771	401	370	1,463	771	692
Nicholas	447	221	226	607	319	288
Scott	583	281	302	1,458	746	712

TOTAL PERSONAL INCOME <sup>8/</sup>

Area	1968	1959	% Change
Bourbon County	\$ 45,109,000	\$ 24,749,000	+ 82.3
Labor Market Area	865,872,000	397,078,000	+117.9
Kentucky	8,516,000,000	4,655,000,000	+ 82.9

PER CAPITA PERSONAL INCOME <sup>9/</sup>

Area	1968	1959	% Change
Bourbon County	\$2,377	\$1,436	+65.5
Labor Market Area	\$1,381 to 3,252	\$864 to 1,954	+59.8 to +66.4
Kentucky	2,645	1,552	+70.4

## EDUCATION

### Public Schools

	<u>Paris Independent</u>	<u>Bourbon County</u>
Total Enrollment	1,595	2,619
Elementary	851	1,340
Junior High	250	502
High School	494	777
Student-Teacher Ratio	19-1	20-1
Elementary	19-1	21-1
Junior High	19-1	20-1
High School	18-1	19-1
State Rating of High School Other Accreditation	Comprehensive Southern Associa- tion of Colleges and Schools	Comprehensive Southern Associa- tion of Colleges and Schools
Percent High School Graduates to College	35.6	35.8
Current Expenditures Per Pupil	\$429.70	\$485.49
Bonded Indebtedness, June 30, 1970	\$1,346,000	\$2,109,000

### Parochial, Private and Special Schools

	<u>Private</u>	<u>Parochial</u>
Total Enrollment	188	57
Elementary	8	57
High School	180	
Student-Teacher Ratio	9-1	14-1
Elementary	8-1	14-1
High School	10-1	

Vocational Schools

	<u>Nearest Area School</u>	<u>Nearest Extension Center</u>
Location	Lexington	Fayette County
Miles Distant	15	15
Curriculum	Data Processing General Clerical Secretarial-Steno Practical Nursing Distributive Education Electronics Tool & Die Design Auto Body Repair Auto Mechanics Commercial Foods Drafting, Machine Shop Electricity, Printing Office Machine Repair Radio & TV Repair Sheet Metal, Welding	Horticulture Nurse Aide Appliance Repair Auto Body Repair Auto Mechanics Carpentry Electricity Machine Shop Welding

Colleges and Universities

<u>Name</u>	<u>Area - Within 60 Miles</u>		<u>Highest Degree Conferred</u>
	<u>Location</u>	<u>Enrollment</u>	
University of Kentucky	Lexington	15,267	Ph. D. , M. D. , D. M. D. , J. D.
Georgetown College	Georgetown	1,385	Masters
Transylvania University	Lexington	888	Masters
Asbury College	Wilmore	960	Baccalaureate
Kentucky State College	Frankfort	1,620	Baccalaureate
Eastern Kentucky University	Richmond	9,180	Masters
Maysville Community College	Maysville	318	Associate
Southeastern Christian College	Winchester	210	Associate
Morehead State University	Morehead	6,460	Masters
Centre College	Danville	749	Baccalaureate
Berea College	Berea	1,399	Baccalaureate
Midway Junior College	Midway	212	Associate

## TRANSPORTATION

### Rail

Line serving - Louisville & Nashville Railroad

Services - Freight, siding, switching, REA Express pickup and delivery

#### RAILWAY TRANSIT TIME FROM PARIS, KENTUCKY, TO: 10/

City	No. of Days		City	No. of Days	
	CL			CL	
Atlanta, Ga.	3		Los Angeles, Calif.	5	
Birmingham, Ala.	3		Louisville, Ky.	1	
Chicago, Ill.	3		Nashville, Tenn.	2	
Cincinnati, Ohio	1		New Orleans, La.	4	
Cleveland, Ohio	3		New York, N. Y.	5	
Detroit, Mich.	3		Pittsburgh, Pa.	4	
Knoxville, Tenn.	2		St. Louis, Mo.	3	

### Truck Service

#### Company

#### Home Office

Cooper-Jarrett, Inc.	Orange, New Jersey
Dixie Ohio Express, Inc.	Akron, Ohio
Ecklar-Moore Express, Inc.	Lexington, Kentucky
Germann Bros. Motor Transportation, Inc.	Aberdeen, Ohio
McDaniel Motor Express, Inc.	Lexington, Kentucky
McLean Trucking Co.	Winston-Salem, North Carolina
Motor Freight Corporation	York, Pennsylvania
Turner Expediting Service	Louisville, Kentucky
United Parcel Service	Louisville, Kentucky

HIGHWAY MILES AND TRUCK TRANSIT TIME IN DAYS FROM  
PARIS, KENTUCKY, TO SELECTED MARKET CENTERS

City	Highway Miles	Delivery Time <sup>11</sup> / <sub>1</sub>		City	Highway Miles	Delivery Time	
		LTL	TL			LTL	TL
Atlanta, Ga.	400	3	2	Los Angeles, Calif.	2,260	6	5
Birmingham, Ala.	425	3	2	Louisville, Ky.	90	Overnight	
Chicago, Ill.	374	2	1	Nashville, Tenn.	238	2	1
Cincinnati, Ohio	74	Overnight		New Orleans, La.	781	3	2
Cleveland, Ohio	324	2	1	New York, N. Y.	680	3	2
Detroit, Mich.	329	2	1	Pittsburgh, Pa.	350	2	1
Knoxville, Tenn.	210	1	2	St. Louis, Mo.	354	2	1

Air

Nearest Commercial

Location	Blue Grass Field
Runways:	Lexington (15 miles)
Length:	3 paved
Traffic Control:	6,500 ft. ; 3,500 ft. ; 3,500 ft.
Lighting:	Tower, approach and ground control, ILS system
Services:	Approach lighting, beacon, runways and obstruction lighted
	Eastern, Delta, Piedmont, and Allegheny Airlines; 80, 100, and 145 octane; jet fuel; major A & E repairs; storage; restaurant; Weather Bureau; flight instruction; charter service; taxi; U-Drive-It rental service

Bus

Southern Greyhound Bus Line

Taxi

Two taxi companies - 24-hour service

Rental Service

U-Haul service - trucks and trailers

## POWER AND FUEL

### Electricity

Company serving Paris - Paris Light and Power Department

Source of power - (1) Paris Light and Power Department, (2) Kentucky Utilities Company

Total generating capacity - (1) 5,500 KW (2) 740,000 KW

Industrial rates negotiated by - Paris Light and Power Department, Paris, Kentucky

Company serving Paris and Bourbon County - Kentucky Utilities Company

Source of power - Kentucky Utilities Company

Total generating capacity - 740,000 KW

Industrial rates negotiated by - Kentucky Utilities Company, Industrial Development Department, Lexington, Kentucky

Company serving Bourbon County - Clark RECC and Harrison County RECC

Source of power - East Kentucky Power Cooperative

Total generating capacity - 515,000 KW

Industrial rates negotiated by - East Kentucky Power Cooperative, Winchester, Kentucky

### Natural Gas

Company serving - Columbia Gas of Kentucky

Source of supply - Kentucky Gas Transmission Corporation

Size of transmission lines - 6 and 8 inches

Distribution lines - 3, 4, 6, and 8 inches

BTU content - 1,000

Specific gravity - .6

Distribution pressure - 6 ounces

#### Rates:

First	1,000 Cu. Ft.	\$1.8187
Next	9,000 Cu. Ft.	.7947 Per M Cu. Ft.
Next	40,000 Cu. Ft.	.7547 Per M Cu. Ft.
All over	50,000 Cu. Ft.	.7047 Per M Cu. Ft.

Minimum Bill - \$1.78

## WATER AND SEWERAGE

### Water

Company serving Paris - Paris Water and Sewer Department

Source - Stoner Creek

Treatment plant capacity - 3,000,000 gpd

Average daily consumption - 900,000 gallons

Peak daily consumption - 1,434,000 gallons

Type treatment - standard rapid sand filtration

Storage capacity - 1,750,000 gallons

Average pressure - 80 psi

Average temperature - 50°F.

Size mains - 4, 6, 8, 10, 12, and 16 inches

### MONTHLY WATER RATES FOR WHOLESALE AND INDUSTRIAL CONSUMERS

First	2,000 gallons	\$3.40 Minimum
Next	8,000 gallons	.90 per M gallons
Next	20,000 gallons	.85 per M gallons
Next	20,000 gallons	.75 per M gallons
Next	50,000 gallons	.65 per M gallons
Next	50,000 gallons	.60 per M gallons
Over	150,000 gallons	.50 per M gallons

For county residents - add to above rate for water service  
40 percent

Note: The minimum shown above applies to 5/8-inch or  
3/4-inch meters. Minimum bill for larger meters is:

1-inch meter	\$ 5.25
1 1/2-inch meter	7.50
2-inch meter	10.50
3-inch meter	15.00
4-inch meter	30.00
6-inch meter	60.00

For larger customers using over 150,000 gallons per month,  
the short cut method of figuring the bill is to multiply gallons  
used by 50¢ and add \$30.10 (plus 40 percent for county users)

Private Fire Protection

Fire Hydrant - per month	\$ 7.50
Sprinkler system - 4-inch connection	15.00
Sprinkler system - 6-inch connection	25.00
Sprinkler system - 8-inch connection	40.00
 Municipal Fire Hydrants - per month	 \$ 5.00

Surface water sources - Stoner Creek

Average discharge - not registered

Expected ground water yield - 50 to 200 gpm in center grading out to  
5 gpm or less

Yield along main streams - 50 to 200 gpm

Sewerage

Company serving Paris - Paris Water and Sewer Department

Design capacity - 2,200 gpm

Average daily flow - 865,000 gallons

Treatment - primary and secondary

Type treatment - clarifier, trickling filters in two stages

Treated effluent discharged into - Stoner Creek

Size of sanitary mains - 8, 10, and 12 inches

Size of storm mains - 15, 18, 24, and 36 inches

Sewer service charge -

Percent of net water bill - 70 percent

For county residents - add to above rate

for sewer service - 40 percent



## LOCAL GOVERNMENT

### City

Structure - Mayor - 4-year term; 4 commissioners - 4-year terms  
 Budget 1970 - General Fund \$350,000; Water and Sewer Fund \$132,000  
 Fees and licenses - Business and occupational license fees range from  
 \$30 to \$260 annually.

### County

Structure - County Judge - 4-year term; 8 magistrates - 4-year terms  
 Budget 1969-70 - General Fund \$280,565; Road Fund \$132,100

### Assessed Value of Property, 1969

<u>Classes of Property*</u>	<u>Paris</u>	<u>Bourbon County</u>
Real Estate and Tangibles	\$34,458,179	
Real Estate		\$129,237,080
Tangibles		54,901,320
Public Service	2,635,097	9,419,559

### Local General Property Tax Rates Per \$100 of Assessed Valuation, 1969 <sup>12/</sup>

<u>Taxing Unit**</u>	<u>Paris</u>	<u>Bourbon County</u>
State	\$ .015	\$ .015
County	.198	.198
School	.780	.517
City	.250	
Total	\$1.243	\$ .730

\*Property assessed at 100 percent of fair value.

\*\*Manufacturing machinery, raw materials inventories and goods in process inventories are not subject to local tax. State rate is only \$0.15 per \$100.

Planning and Zoning

Agency - Paris-Bourbon County Planning Commission  
Plans completed - Comprehensive Plan  
Plans in process - Subdivision Regulations, Zoning Ordinance  
Codes adopted - all standard codes  
Other programs - Public Housing, Urban Renewal, Certified Workable Program

Safety

<u>Police</u>	<u>Paris</u>	<u>Bourbon County</u>
Total staff	14 regulars 7 special 8 adult school patrol guards	4
Radio-patrol cars	3	1
Other equipment	2 scooters for traffic and meters	

Fire

American Insurance Association Fire Rating	6	
Full-time staff	14	5
Volunteers	15	14
Equipment:		
1,000 gpm pumpers	1	1
750 gpm pumpers	2	1
500 gpm pumpers		1

Rescue Service

Paris Fire Department Rescue Squad  
Number of volunteers - 29  
Equipment - utility truck, oxygen, first aid kits  
Personnel training - first aid and fire school

Sanitation

	<u>Paris</u>	<u>Bourbon County</u>
Type service	municipal	private
Cost:		
residential	\$2.50 monthly	contract
business	\$6.00 monthly	contract
Collection frequency:		
residential	weekly	when desired
business	daily	when desired
Trash pickup	weekly	when desired
Disposal method	incinerator	incinerator

## HEALTH

### Hospitals

	<u>Beds</u>
General Hospital	
Bourbon County Hospital	74
Tuberculosis Hospital District No. 3	110
Bourbon County Hospital	
General hospital facilities - 2 operating rooms, recovery room, X-ray, nursery, pharmacy, laboratory, physical therapy, inhala- tion therapy department, obstetrical section, emergency room	
Medical staff - 12 doctors, 23 registered nurses, 5 graduate licensed practical nurses	
State Tuberculosis Hospital District No. 3	
Medical staff - 2 doctors, 5 registered nurses, 3 licensed practical nurses	

### Nursing Homes

	<u>Number</u>	<u>Beds</u>
Extended care home	1	64
Personal care home	1	17

### Public Health

Facility - The Paris-Bourbon County Health Department  
Staff - Health officer, 3 nurses, 1 home health aide, 2 clerks, 1  
sanitarian, 1 nutritionist, 2 dentists  
Budget 1969-70 - \$60,196

## OTHER LOCAL FACILITIES

### Communications

Telephone - South Central Bell Telephone Company  
Services - standard

Telegraph - Western Union  
Services - phone

Postal - Class-1 U. S. Post Office  
Mail received - 4 times daily  
Mail dispatched - 4 times daily

Newspapers -  
Daily and circulation - The Daily Enterprise - 5,200  
Weekly and circulation - Citizen Advertiser - 5,500  
Other papers received from - Louisville and Lexington, Kentucky;  
Cincinnati, Ohio

Radio - WPDE - 1440  
Stations received from - Lexington, Louisville, Cynthiana and  
Winchester, Kentucky; Cincinnati, Ohio

Television -  
Reception from - Lexington, Kentucky, and Cincinnati, Ohio  
Kentucky Educational Television - Lexington transmitter, Channel 46

### Library Services

Public Libraries - Paris-Bourbon County Public Library  
Size collection - 16,800 volumes  
Circulation, 1969 - 174,211  
Services - records, films, services for blind, pictures, film pro-  
jector, slide projector, story hour, magazines, room available for  
meetings

### Religious Institutions

Number of churches - 16  
Denominations - Baptist, Catholic, Christian, Church of God, Church  
of Christ, Episcopal, Latter Day Saints, Methodist, Nazarene,  
Pilgrim Holiness and Presbyterian

Financial Institutions

<u>Banks</u>	<u>Statement as of December 31, 1969</u>	
	<u>Assets</u>	<u>Deposits</u>
Bourbon Agriculture Bank and Trust Company	\$11,486,342.36	\$10,314,548.26
Peoples Deposit Bank and Trust Company	10,025,453.09	8,956,771.72
The National Bank and Trust Company of Paris	6,526,538.94	5,654,234.43
<u>Savings and Loan Association</u>	<u>Assets</u>	<u>Share Accounts</u>
Blue Grass Federal Savings and Loan Association	\$ 7,482,629.42	\$ 6,835,514.58

Hotels and Motels

<u>Number</u>	<u>Units</u>
4	57

Clubs and Organizations

Business and Civic - Paris-Bourbon County Chamber of Commerce,  
Jaycees, Kiwanis Club, Lions Club, Rotary Club, Civitan, YMCA

Fraternal - Odd Fellows, Masons, American Legion, VFW

Women's - DAR, American Legion Auxiliary, Business and Professional  
Women's Club, Bourbon County Homemakers, PTA, Younger Woman's  
Club, VFW Auxiliary, Lioness, Civinettes, Hospital Auxiliary of  
Bourbon County

Youth - Boy Scouts, Girl Scouts, Cub Scouts, Brownies, 4-H, FFA,  
FHA, FBLA, Teen Square, Junior League, Small Fry Football



New Paris City School



Bourbon Heights, Retirement Housing-Nursing Home



Entrance to Garrard Park



Stoner Creek Golf Course



## RECREATION

### Local

#### Public Recreation Facilities

Supervised program - summer program

Parks - 2

Playground - 1

Swimming pool - 1

Tennis courts - 4

Baseball diamonds - 2

Football field - 1

Other - fishing, boating and water skiing at Stoner Creek Reservoir

#### Private Recreation Facilities

Country club - 1

Golf course - 1 (9-hole)

Swimming pool - 1

Movie theaters - 1 indoor, 1 outdoor

Bowling lanes - 1

Other - tennis court

#### Tourist Attractions

Duncan Tavern, Cave Ridge Shrine, horse farms, 1970 Kentucky

Derby Winner, covered bridge, Lions Club Dixieland Show, tobacco  
auctions

### Area (Within 25 miles)

Lexington, Kentucky, offers the full spectrum of sophisticated entertainment, cultural and sporting events.

AGRICULTURE - NATURAL RESOURCES - CLIMATE

Agriculture 13/

	<u>Bourbon County</u>	<u>Labor Market Area</u>
Total land area (acres)	192,000	1,360,640
Percent of area in farm land	96.5	111.7
Number of farms	1,235	8,054
Average size of farms (acres)	150.1	151.2
1964 value of all farm products	\$13,385,583	\$76,247,697
Value per farm	10,839	9,467
Total crop sales	6,460,476	34,942,737
Total livestock & livestock products	6,920,550	37,900,430
1967 agricultural production included:		
Burley tobacco (lbs.)	11,055,000	64,909,000
Corn (bu.)	722,000	3,285,000
Cattle and calves (number)	50,500	269,800
Hogs and pigs (number)	33,800	92,500
Milk production (1966) (lbs.)	13,125,000	98,205,000

Natural Resources

Principal mineral resources	Limestone
Other mineral resources	Vein minerals and rock phosphate
Acres of commercial forest land	5,100
Most abundant tree species	White oaks, red oaks, black walnut, ash, and hard maple

Climate 14/

	<u>Bourbon County</u>
Temperature	
Annual mean (30-year record)	55.6°
Average annual (1969)	54.6°
Record highest (6-year record)	98.0°
Record lowest (6-year record)	-10.0°
Seasonal heating degree-days (30-year record)	4,683
Precipitation	
Mean annual total (30-year record)	44.73 inches
Mean annual snow and sleet (25-year record)	16.0 inches
Total precipitation (1969)	39.5 inches
Mean No. days precipitation (25-year record) (.01 inches or more)	128
Average No. days thunderstorms (25-year record)	47
Prevailing winds (17-year record)	South

## HISTORY

Bourbon County was established by the Virginia Legislature in 1785. It was the fifth of nine counties formed by Virginia prior to Kentucky's statehood. Its territory was taken from Fayette County, and later it gave lands to form Mason (1788), and parts of Clark (1792), Harrison (1793), and Nicholas Counties (1799). Its surface is gently rolling, the soil is fertile, and the county is well-drained. It lies in the heart of the Bluegrass Region, and is one of the most important agricultural counties in the state.

The first court in Bourbon County was held on May 16, 1786, at the residence of James Garrard, who became Kentucky's second governor and the only man elected to two terms in succession. John Edwards, who later was elected to the United States Senate, was also a member of the court. This court issued an order to regulate tavern rates as follows: whiskey 10 shillings per gallon, West India rum and wine 24 shillings each, cold dinners 1 shilling, warm dinners 1 shilling and 6 pence, breakfast 1 shilling, and lodging in clean sheets 6 pence.

By 1790, corn whiskey was made in large quantities. This industry grew rapidly for by 1823 no less than forty distilleries were in operation in the county.

Bourbon County was named in honor of the ruling family of France, whose aid was invaluable to the United States' effort to secure independence from Great Britain.

Paris, the county seat, was established as Hopewell in 1789 due to the fact that drivers of stagecoaches "hoped" they could reach it before nightfall, and was called Bourbontown for a short time. It was named Paris in 1790, for the capital of France. The town is a leading bluegrass seed market. Doyles Spring, around which several log cabins were built, is near present-day Duncan Tavern, a more recent landmark. The Tavern, a museum, is maintained by the Daughters of the American Revolution.

Among the prominent people of Bourbon County were Benjamin Bedford who owned a distillery and powder mill at the beginning of the nineteenth century. He furnished practically all of the powder used by Kentuckians in the War of 1812 except at the Battle of New Orleans, for which General Andrew Jackson obtained supplies from the United States Government. Cassius M. Clay, Jr., was president of the Constitutional Convention that wrote Kentucky's present Constitution in the early 1890's. John Fox, Jr., whose stories of the mountains and their people are deeply regarded and appreciated by Kentuckians, was a native of Bourbon County.

## SOURCES OF INFORMATION

- 1/ U. S. Department of Commerce, Bureau of the Census, Census of Population, 1950, 1960, 1970 (Preliminary figures).
- 2/ Kentucky Department of Economic Security, Division of Research and Statistics.
- 3/ Kentucky Department of Economic Security, Number of Workers in Manufacturing Industries Covered by Kentucky Unemployment Insurance Law Classified by Industry and County, September 1959, September 1969.
- 4/ Kentucky Department of Commerce, 1970 Kentucky Directory of Manufacturers.
- 5/ Kentucky Department of Economic Security, Division of Employment Service, Lexington office. Paris-Bourbon County Chamber of Commerce.
- 6/ Kentucky Department of Economic Security, Kentucky Labor Supply Estimates by County, January 1970.
- 7/ Kentucky Department of Commerce, Future Labor Supply by 1976.
- 8/ University of Kentucky, Office of Development Services and Business Research, Total Personal Income for Kentucky.
- 9/ University of Kentucky, Office of Development Services and Business Research, Per Capita Income in Kentucky.
- 10/ Louisville & Nashville Railroad, Louisville, Kentucky.
- 11/ Ecklar-Moore Express, Inc., Lexington, Kentucky.
- 12/ Kentucky Department of Revenue, Kentucky Property Tax Rates, 1969.
- 13/ U. S. Department of Commerce, Bureau of the Census, Census of Agriculture, 1964. U. S. Department of Agriculture and Kentucky Department of Agriculture, Kentucky Agricultural Statistics, 1968.
- 14/ U. S. Department of Commerce, Environmental Science Services Administration, Climatological Data, 1969.

All other information was obtained from governmental offices, local businesses and organizations.