

1969

Industrial Resources: Boyle County - Danville

Kentucky Library Research Collections
Western Kentucky University, spcol@wku.edu

Follow this and additional works at: https://digitalcommons.wku.edu/boyle_cty

 Part of the [Business Administration, Management, and Operations Commons](#), [Growth and Development Commons](#), and the [Infrastructure Commons](#)

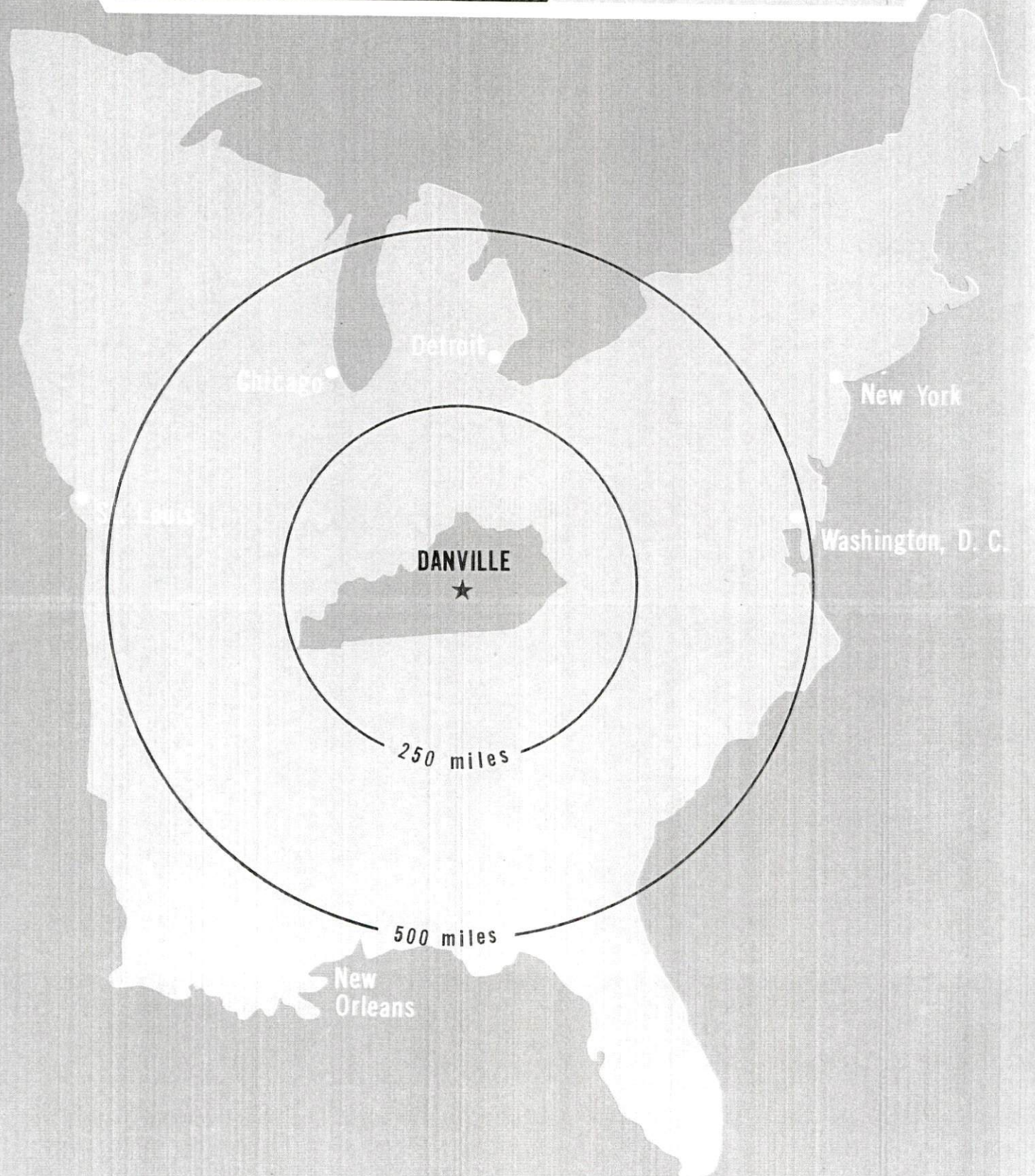
Recommended Citation

Kentucky Library Research Collections, "Industrial Resources: Boyle County - Danville" (1969). *Boyle County*. Paper 8.
https://digitalcommons.wku.edu/boyle_cty/8

This Report is brought to you for free and open access by TopSCHOLAR®. It has been accepted for inclusion in Boyle County by an authorized administrator of TopSCHOLAR®. For more information, please contact topscholar@wku.edu.

INDUSTRIAL RESOURCES

**DANVILLE
KENTUCKY**



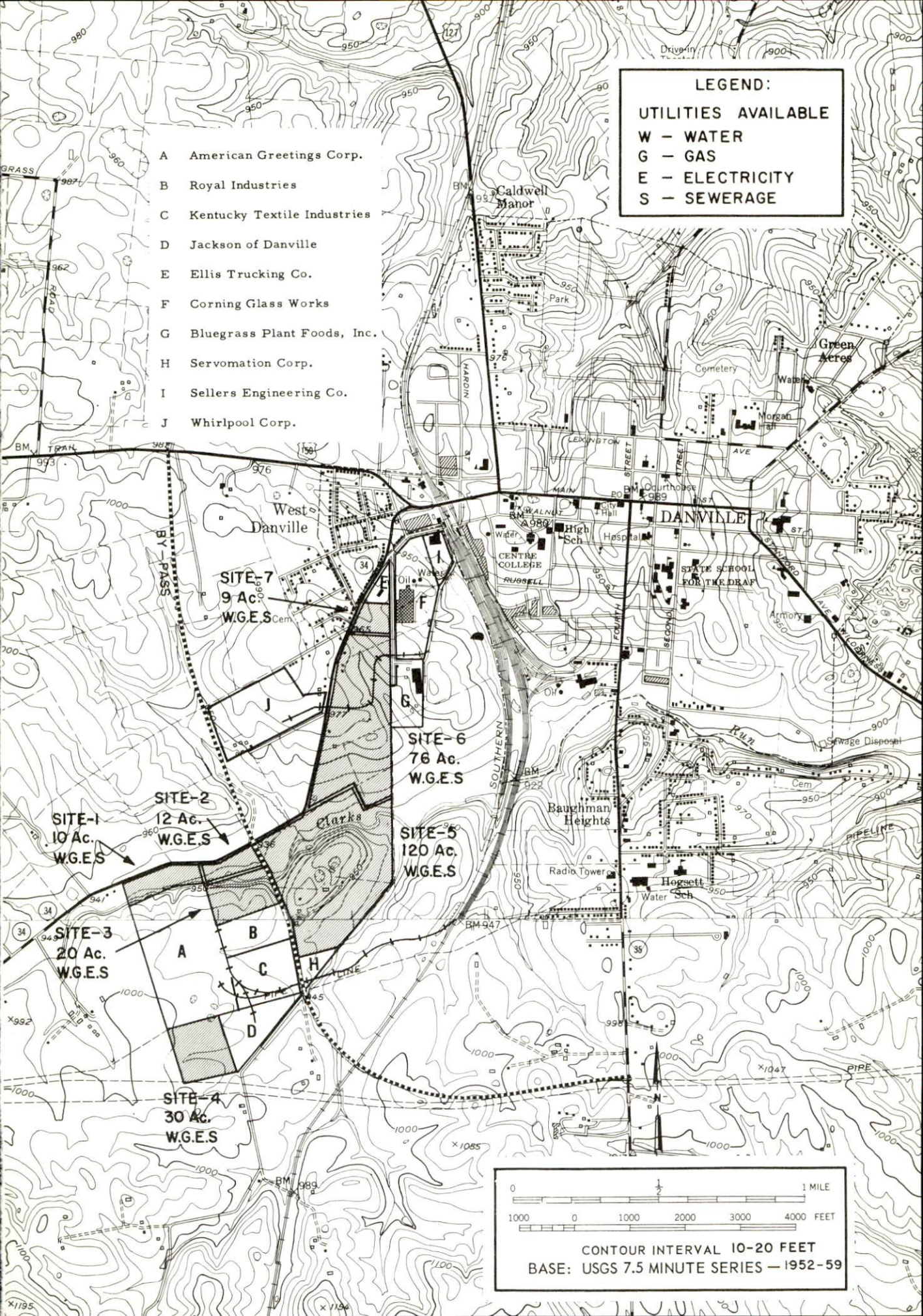
DANVILLE INDUSTRIAL SITES

1969

DANVILLE INDUSTRIAL SITES

For more detailed information concerning the following sites, contact J. H. Bailey, Jr., Kentucky Utilities Company, Danville, Kentucky, or the Kentucky Department of Commerce, Frankfort, Kentucky.

- SITE #1: ACREAGE AND TOPOGRAPHY: 10 acres, level
LOCATION: Boyle County Industrial Park,
1 mile southwest of Danville
ZONING: Industrial
HIGHWAY ACCESS: Kentucky Highway 34 and
bypass road
WATER: Danville Municipal
SIZE LINE: 12-inch
GAS: Western Kentucky Gas Company
SIZE LINE: 4-inch
ELECTRICITY: Kentucky Utilities Company -
69 kv source
SEWERAGE: Danville Municipal
OWNERSHIP: Danville Development
Corporation
- SITE #2: ACREAGE AND TOPOGRAPHY: 12 acres, level
LOCATION: Boyle County Industrial Park,
1 mile southwest of Danville
ZONING: Industrial
HIGHWAY ACCESS: Kentucky Highway 34 and
bypass road
WATER: Danville Municipal
SIZE LINE: 12-inch
GAS: Western Kentucky Gas Company
SIZE LINE: 4-inch
ELECTRICITY: Kentucky Utilities Company -
69 kv source
SEWERAGE: Danville Municipal
OWNERSHIP: Danville Development Corporation
- SITE #3: ACREAGE AND TOPOGRAPHY: 20 acres, gently
rolling
LOCATION: Kentucky Highway 34, 1 mile south-
west of Danville
ZONING: Industrial
HIGHWAY ACCESS: Kentucky Highway 34 and
bypass road
RAILROADS: Served by Southern Railway spur
WATER: Danville Municipal
SIZE LINE: 12-inch
GAS: Western Kentucky Gas Company
SIZE LINE: 4-inch
ELECTRICITY: Kentucky Utilities Company -
69 kv source
SEWERAGE: Danville Municipal
OWNERSHIP: Danville Development Corporation
- SITE #4: ACREAGE AND TOPOGRAPHY: 30 acres, gently
rolling
LOCATION: Boyle County Industrial Park,
1 mile southwest of Danville
ZONING: Industrial
HIGHWAY ACCESS: Kentucky Highway 34 and
bypass road
RAILROADS: Served by Southern Railway spur
WATER: Danville Municipal
SIZE LINE: 12-inch
GAS: Western Kentucky Gas Company
SIZE LINE: 4-inch
ELECTRICITY: Kentucky Utilities Company -
69 kv source
SEWERAGE: Danville Municipal
OWNERSHIP: Danville Development Corporation
- SITE #5: ACREAGE AND TOPOGRAPHY: 120 acres,
level to gently rolling
LOCATION: 1 mile southwest of Danville
ZONING: Industrial
HIGHWAY ACCESS: Kentucky Highway 34
within 1,100 feet of site
RAILROADS: Southern Railway System
tracks within 1,000 feet on site
WATER: Danville Municipal
SIZE LINE: 12-inch
GAS: Western Kentucky Gas Company
SIZE LINE: 4-inch
ELECTRICITY: Kentucky Utilities Company -
69 kv source
SEWERAGE: 8-inch main of Danville Municipal
System, 1,000 feet away
OWNERSHIP: Danville Development Corporation
- SITE #6: ACREAGE: 76 acres
LOCATION: Kentucky Highway 34
ZONING: Industrial
HIGHWAY ACCESS: Kentucky Highway 34
RAILROADS: Southern Railway System
WATER: On site SIZE LINE: 12-inch
GAS: Available SIZE LINE: 4-inch
ELECTRICITY: Available - 69 kv supply
SEWERAGE: Available
OWNERSHIP: Danville Development Corporation
- SITE #7: ACREAGE: 9 acres
LOCATION: Kentucky Highway 34
ZONING: Industrial
HIGHWAY ACCESS: Kentucky Highway 34
RAILROADS: Southern Railway System
WATER: On site SIZE LINE: 12-inch
GAS: Available SIZE LINE: 4-inch
ELECTRICITY: Available - 69 kv supply
SEWERAGE: Available
OWNERSHIP: Private



- A American Greetings Corp.
- B Royal Industries
- C Kentucky Textile Industries
- D Jackson of Danville
- E Ellis Trucking Co.
- F Corning Glass Works
- G Bluegrass Plant Foods, Inc.
- H Servomation Corp.
- I Sellers Engineering Co.
- J Whirlpool Corp.

LEGEND:

UTILITIES AVAILABLE

- W - WATER
- G - GAS
- E - ELECTRICITY
- S - SEWERAGE

0 1/2 1 MILE

1000 0 1000 2000 3000 4000 FEET

CONTOUR INTERVAL 10-20 FEET
 BASE: USGS 7.5 MINUTE SERIES - 1952-59

SITE-7
 9 Ac.
 W.G.E.S.

SITE-6
 76 Ac.
 W.G.E.S.

SITE-5
 120 Ac.
 W.G.E.S.

SITE-1
 10 Ac.
 W.G.E.S.

SITE-2
 12 Ac.
 W.G.E.S.

SITE-3
 20 Ac.
 W.G.E.S.

SITE-4
 30 Ac.
 W.G.E.S.

American
Greeting
Corp.

Royal
Industries

Jackson
of Danville

Ky. Textile
Industries

Servomation
Corp.

Bypass construction

INDUSTRIAL RESOURCES

DANVILLE, KENTUCKY

Prepared by

The Kentucky Department of Commerce

in cooperation with

The Danville-Boyle County Chamber of Commerce

1969

This copy has been prepared by the Kentucky Department of Commerce, Division of Research and Planning, and the cost of printing paid from state funds.

TABLE OF CONTENTS

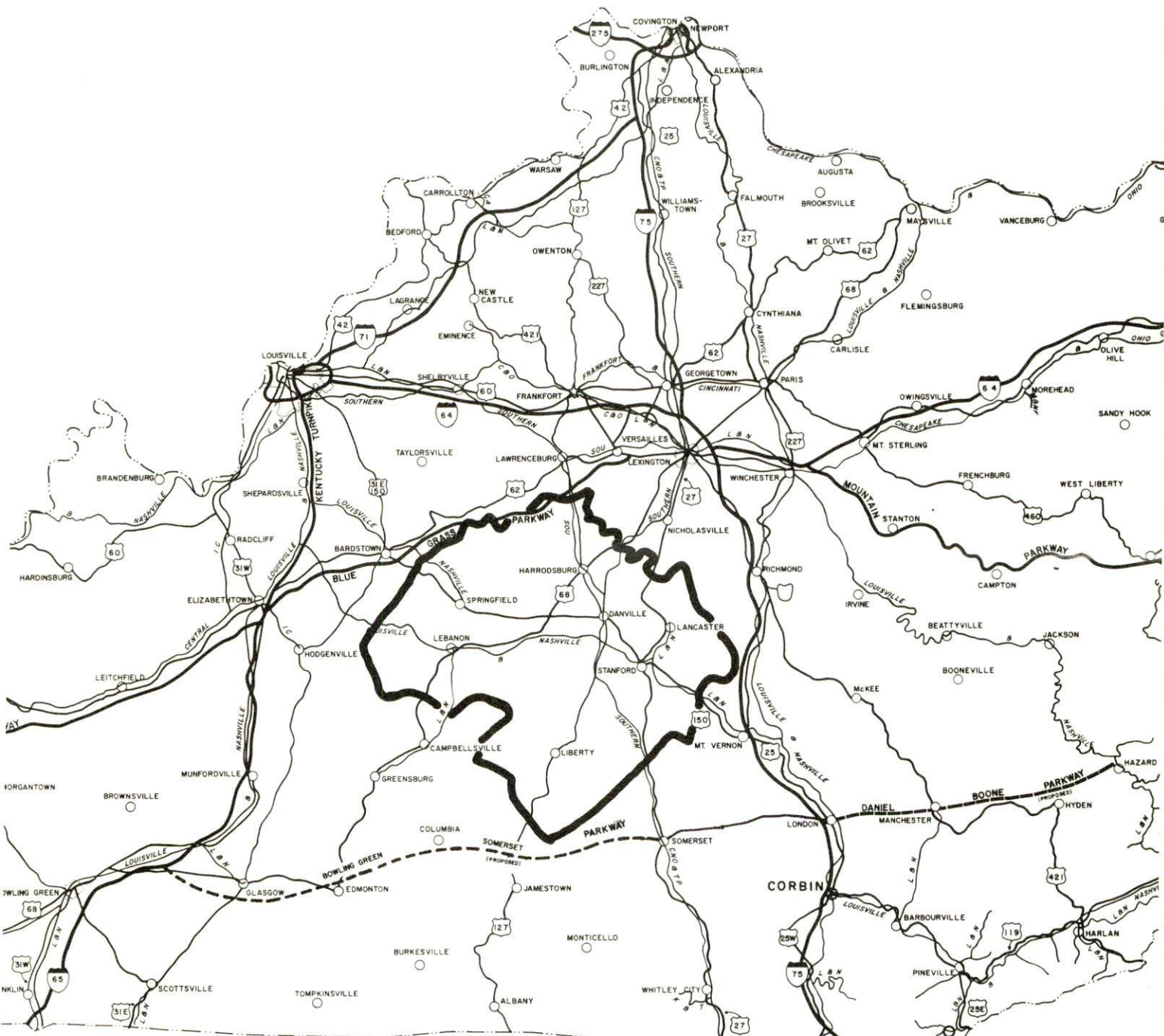
<u>Chapter</u>	<u>Page</u>
INDUSTRIAL SITES	i
DANVILLE, KENTUCKY - A RESOURCE PROFILE.	1
THE LABOR MARKET.	4
Population Trends	4
General Employment Characteristics	4
Manufacturing Employment Trends by Industry	4
Boyle County Manufacturing Firms, Their Products, and Employment	7
Wage Rates for Selected Occupations	8
Labor Organizations	8
Current and Future Labor Supply.	9
Total Personal Income	9
Per Capita Personal Income	9
EDUCATION	11
Public Schools	11
Parochial, Private and Special Schools	11
Vocational Schools	13
Colleges and Universities	13
TRANSPORTATION	14
Rail.	14
Truck Service	14
Air	15
Bus	15
Taxi	15
Rental Service	15
POWER AND FUEL	16
Electricity.	16
Natural Gas	16

<u>Chapter</u>	<u>Page</u>
WATER AND SEWERAGE	17
Water	17
Sewerage	17
LOCAL GOVERNMENT	18
City	18
County	18
Assessed Value of Property - 1969	18
Local General Property Tax Rates per \$100 of Assessed Valuation - 1969.	18
Planning and Zoning	19
Safety.	19
Police.	19
Fire	19
Rescue Service.	19
Sanitation.	19
HEALTH	20
Hospitals	20
Nursing Homes	20
Public Health	20
Mental Health	20
OTHER LOCAL FACILITIES	21
Communications.	21
Library Services	21
Religious Institutions.	22
Financial Insititutions	22
Hotels and Motels	22
Clubs and Organizations	22
RECREATION	24
Local	24
Area	24
AGRICULTURE - NATURAL RESOURCES - CLIMATE	25
Agriculture	25
Natural Resources	25
Climate.	25
HISTORY	26



AERIAL VIEW - DANVILLE, KENTUCKY

DANVILLE LABOR MARKET AREA



MIDDLESBORO



GRAPHIC SCALE IN MILES

Base Data: U. S. Geological Survey

DANVILLE, KENTUCKY - A RESOURCE PROFILE

Location

Danville, the county seat of Boyle County, is rich in history and tradition dating back to 1775. Danville was the site of 10 conventions that culminated in Kentucky's admission to the Union in 1792. Danville then became the Commonwealth's first Capitol for a brief period of time.

The designation of Danville as a 1968 All-America City and the initiation of a vigorous model city's program is strong proof that the city is progressive and in tune with the times. In Danville the beauty of wide tree-studded streets is combined with energetic and imaginative leadership to create growth in an environment of excellent livability.

Geographically, Danville is positioned in the central bluegrass region 32 miles from Lexington and 68 miles from Louisville. Population of Danville was estimated at 12,800 in January 1969 with population of Boyle County estimated at 22,800.

The Economic Framework

Total employment in Boyle County averaged 10,500 in 1968 with manufacturing providing almost 3,000 of these jobs. During the first nine years of the decade manufacturing employment increased by almost 1,400 jobs or 90 percent. Major industrial products are shoes, clothing, greeting cards and glass.

Per capita income in the county in 1968 was \$3,206 or \$600 above the Kentucky average and ranked 21st among the state's 120 counties. In a word, the local economy is prosperous, particularly in relative terms.

Danville is the hub of a labor market area that includes Boyle and six other counties. Area employment totals almost 37,000 including 10,350 in agriculture. Manufacturing furnishes slightly more than 7,800 jobs. Area industrial employment has almost doubled since 1959 with sharpest gains in the printing and metal products industries.

Despite important industrial gains in recent years the area still has a deficit of 2,200 manufacturing jobs when measured against the national industrial employment-population ratio. This indicates an area where the potential for additional manufacturing production is excellent.

Resources For Growth

1. There is a current estimated labor supply of 4,600 men and 2,800 women for industrial jobs in the labor market area. The best possibilities for attracting workers to jobs at Danville are in the southern tier of counties in the area. Commuting to Danville jobs from surrounding counties is commonplace today. In addition 5,500 young men and 5,400 young women will become 18 years of age by 1975 and potentially available for work.

2. The local transportation capability is good. Two railroads serve Danville with a variety of services. There is easy access to Interstate 75 and Interstate 64, which are major highway arteries into the industrial south, midwest and east. The Blue Grass Parkway, only a short distance to the north, is an important link to the west. Commercial air service is available only minutes away.

3. Energy - both gas and electricity - is available in large quantity. The local water supply from Herrington Lake is more than adequate for continued growth.

4. Industrial sites - Danville has seven available industrial sites with all utilities.

5. Education is an important growth asset for Danville. The city school system is rated as one of the most outstanding in Kentucky with imaginative approaches to curriculum development.

Nine senior colleges are within 50 miles of Danville, with the University of Kentucky only 35 miles away. Eastern Kentucky University and Berea College are within 40 miles. And at Danville is Centre College, chartered in 1819.

Centre is a liberal arts college with an outstanding reputation nationally. Academic excellence is attested by the current enrollment of thirty National Merit scholars. To serve students of this caliber, the college has undertaken during the past decade one of the most substantial curricular reforms in the nation.

The campus includes approximately fifty-five acres within the city. More than \$8,000,000 has been invested in enlarging facilities since 1960. Trustee and alumni support has been outstanding, meriting three first place awards in six years in the annual competition of the American Alumni Council of the United States.

Community Programs For Improvement

Danville's designation as one of eleven All-American Cities in 1968 was the result of successful community programs and industrial expansion. The city was cited for the location of four new industries on developed sites owned by the nonprofit Danville Development Corporation. Other programs contributing to the designation were: airport expansion, opening of a comprehensive care center, a \$3.5 million water and sewer improvement project, a new city manager form of government, improved hospital facilities, integration of the police force, and the private development of an experimental four-bedroom home, meeting all codes and selling for a total of \$7,200.

Also, during 1968, Danville was designated a Model City by the U. S. Department of Housing and Urban Development. The city is presently involved in the comprehensive planning phase of this program with the 5-year action phase to start upon its completion.

Recreation, Entertainment and Livability

Danville's location in the heart of Kentucky places it at the center of recreation and entertainment facilities but with the added asset of suburban living.

Herrington Lake, 4 miles from the city is 36 miles in length and dotted with private and commercial camps, offering a variety of water sports and recreational facilities. Pioneer Playhouse, the State Theatre of Kentucky, brings summer stock theatre to Danville during June, July and August. The city and environs is a historian's paradise featuring restored Constitution Square, the McDowell House, many fine examples of early 19th century architecture, and Perryville Battlefield, 10 miles west, the site of Kentucky's bloodiest civil war battle. Nearby Harrodsburg features Fort Harrod, the state's first settlement, and The Legend of Daniel Boone, performed nightly during the summer months. Centre College offers various cultural events including the annual subscription Community Arts Series which consists of three concert programs, each of unique interest.

Lexington, 35 miles distant, offers the full spectrum of sophisticated entertainment, cultural and sporting events. The finest thoroughbred and harness racing in the world is available at Keeneland Race Course and the Red Mile Trotting Track at several meets each year. The University of Kentucky provides nine months of sports excitement every year. The Central Kentucky Concert and Lecture Association presents an annual subscription series which brings to the city, world famous groups and individuals in the arts and sciences. There are also three symphony orchestras, theatre groups which produce more than twenty plays each year and scores of free concerts, lectures and art exhibitions at Transylvania College and the University of Kentucky.

THE LABOR MARKET

POPULATION TRENDS ^{1/}

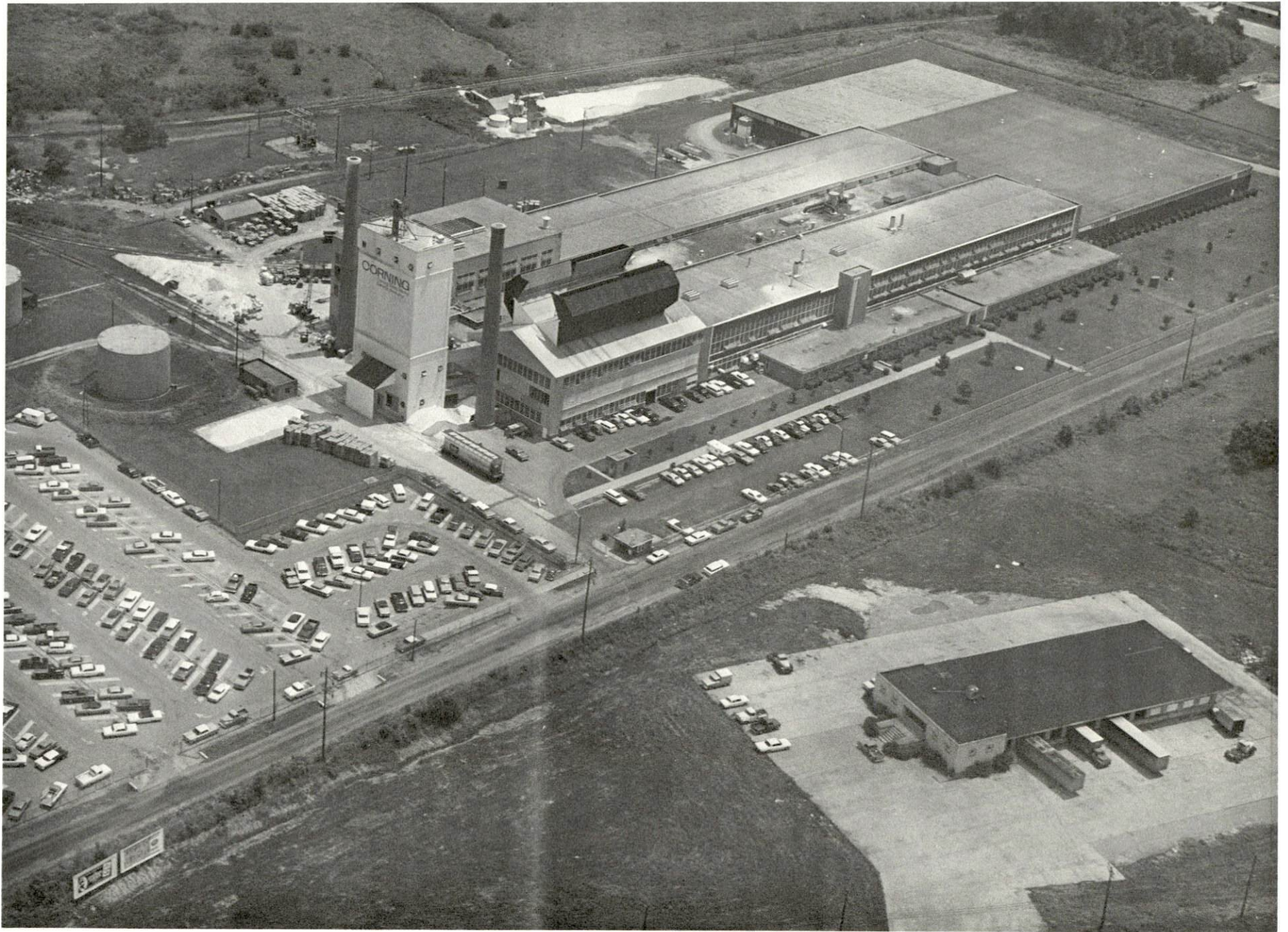
Area				Percent Change	
	1969 (Est.)	1960	1950	1960-69	1950-60
Labor Market Area	102,400	104,485	112,307	- 1.9	-7.0
Boyle County	22,800	21,257	20,532	+ 7.3	+3.5
Danville	12,800	9,010	8,686	+42.1	+3.7

GENERAL EMPLOYMENT CHARACTERISTICS ^{2/}

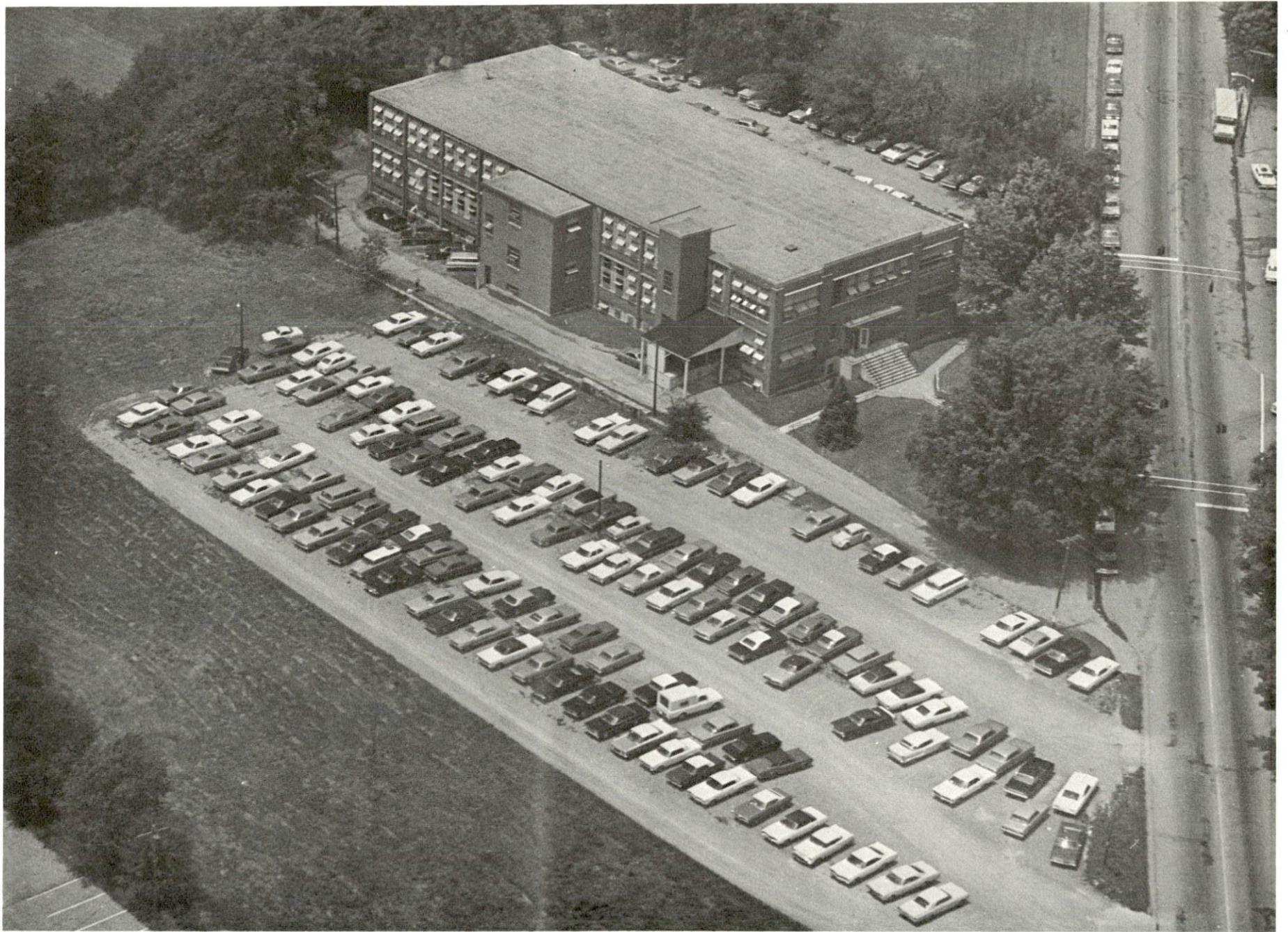
Major Employment Group	1968	1968
	Boyle County	Labor Market Area
TOTAL	10,479	36,926
Agricultural	1,067	10,359
Nonagricultural	9,412	26,567
Manufacturing	2,993	7,841
Trade and Services	2,192	5,815
Government	1,618	4,058
Other	2,609	8,853

MANUFACTURING EMPLOYMENT TRENDS BY INDUSTRY SEPTEMBER 1959 AND 1968 ^{3/}

Industry	Boyle County			Labor Market Area		
	1968	1959	% Change	1968	1959	% Change
TOTAL	2,993	1,584	+ 88.9	7,841	4,067	+ 92.8
Food & Kindred						
Products	158	144	+ 9.7	459	358	+ 28.2
Tobacco	5	19	- 73.7	51	30	+ 70.0
Apparel, Textiles,						
Leather	1,281	731	+ 75.2	3,595	2,331	+ 54.2
Lumber & Furniture	199	113	+ 76.1	871	374	+ 132.8
Printing, Publishing,						
Paper	542	101	+436.6	579	152	+ 280.9
Chemicals, Petroleum,						
Coal, Rubber	3	9	- 66.6	3	9	- 66.6
Stone, Clay & Glass	604	428	+ 41.1	798	449	+ 77.7
Primary Metals	-	-		-	-	
Machinery & Metal						
Products	201	34	+491.2	805	50	+1510.0
Other	-	5		680	314	+ 116.5



CORNING GLASS WORKS



PALM BEACH CO.

BOYLE COUNTY MANUFACTURING FIRMS,
THEIR PRODUCTS, AND EMPLOYMENT ^{4/}

Firm	Product	Employment		
		T	M	F
<u>Danville</u>				
American Greetings Corp.	Stationery, gift wrap	1,000	300	700
Bluegrass Plant Foods, Inc.	Fertilizer	23	20	3
Bluegrass Printing Co.	Printing	5	4	1
Boyle Block Co.	Concrete block	18	18	0
Fred Cain Manufacturing Co., Inc.	Tractor accessories	20	19	1
Coca-Cola Bottling Works	Carbonated beverages	19	19	0
Corning Glass Works	Glass bulbs, tubing	500	300	200
Crofton, Inc.	Foam rubber	4		
Danville Advocate-Messenger	Printing	34	20	14
Dr. Pepper Bottling Co.	Carbonated beverages	10	10	0
Genesco, Inc.	Ladies shoes	500	125	375
Jackson of Danville	Upholstered furniture	189	147	42
Kentucky Kandies	Candy	6	1	5
Kentucky Textile Industries	Plastic covered fabrics, indoor-outdoor carpeting	79	55	24
Myers Concrete	Ready mixed concrete	4	4	0
Palm Beach Co.	Men's suits	578	25	553
Ready Mix Concrete Co.	Concrete block, asphalt, ready mixed concrete	17	16	1
Royal Crown Bottling Co.	Soft drinks	41	38	3
Royal Industries, Inc.	Brake linings			
Sellers Engineering Co.	Boilers, gas fired water heaters	35		
Al Springate Baits	Artificial fishing lures	1	1	0
Whirlpool Corporation	Electric ranges	Up to 500		
<u>Junction City</u>				
Penn Ventilator Co., Inc.	Ventilating equipment	103	102	1

WAGE RATES FOR SELECTED OCCUPATIONS
DANVILLE, KENTUCKY 5/

<u>Classification</u>	<u>Starting</u>	<u>Maximum</u>
<u>Production Employees</u>		
Assembler	\$1.60	\$2.25
Inspector	1.90	2.40
Production Laborer	1.60	2.25
Welder, Arc or Acetylene (Class-A)	1.75	2.55
<u>Service Employees</u>		
Electrician (Class-A)	2.65	3.50
Laborer	1.60	1.85
Machinist	2.65	2.84
Mechanic, Maintenance	2.65	3.00
Truck Driver, Industrial (Class-A)	1.85	1.98
<u>Office Employees</u>		
Bookkeeper	2.00	2.50
File Clerk	1.60	1.75
Receptionist	1.60	1.70
Secretary	1.60	2.50
Typist	1.60	2.00

LABOR ORGANIZATIONS

<u>Union</u>	<u>Representing Workers at:</u>
United Textile Workers of America	Kentucky Textile Industries
United Mine Workers	Fred Cain Manufacturing Co.
Glass Workers Union of North America	Corning Glass Works
Amalgamated Clothing Workers of America	Palm Beach Co.

CURRENT AND FUTURE LABOR SUPPLY -
DANVILLE LABOR MARKET AREA 6/

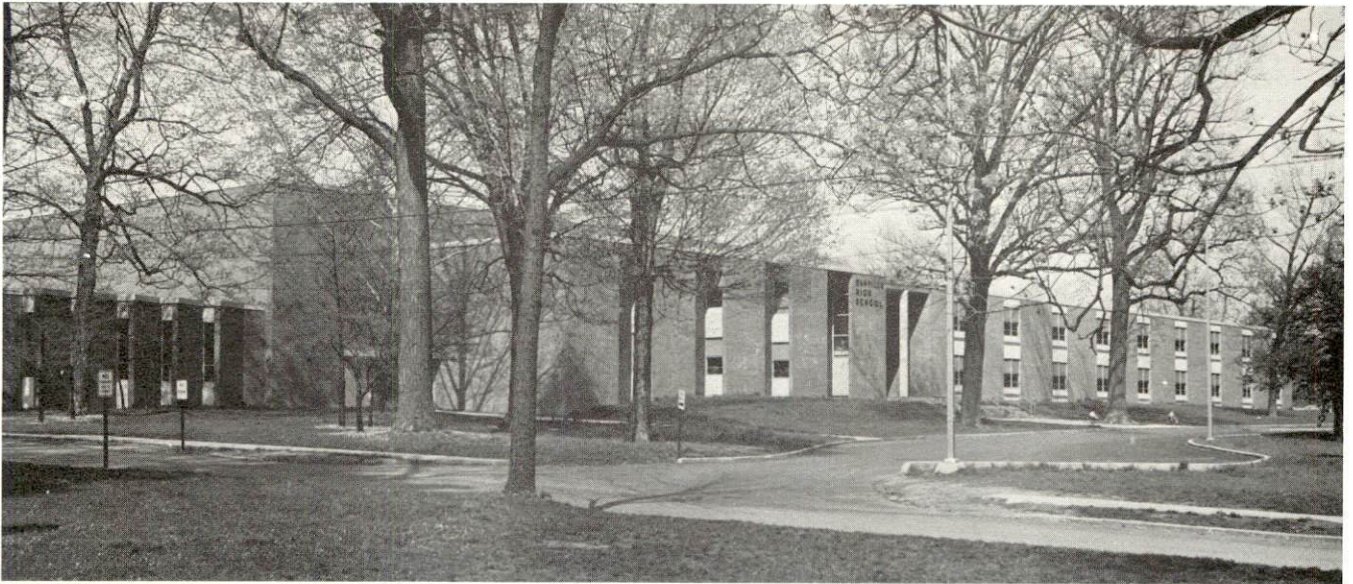
County	1969			Future Labor Supply by 1975 (Becoming 18 Years of Age)		
	Total	Male	Female	Total	Male	Female
Labor Market Area	7,448	4,643	2,805	10,886	5,528	5,358
Boyle	561	337	224	1,997	988	1,009
Casey	1,838	1,079	759	1,557	794	763
Garrard	618	473	145	863	449	414
Lincoln	2,048	1,357	691	1,732	898	834
Marion	730	476	254	2,184	1,089	1,095
Mercer	487	291	196	1,393	720	673
Washington	1,166	630	536	1,160	590	570

TOTAL PERSONAL INCOME 7/

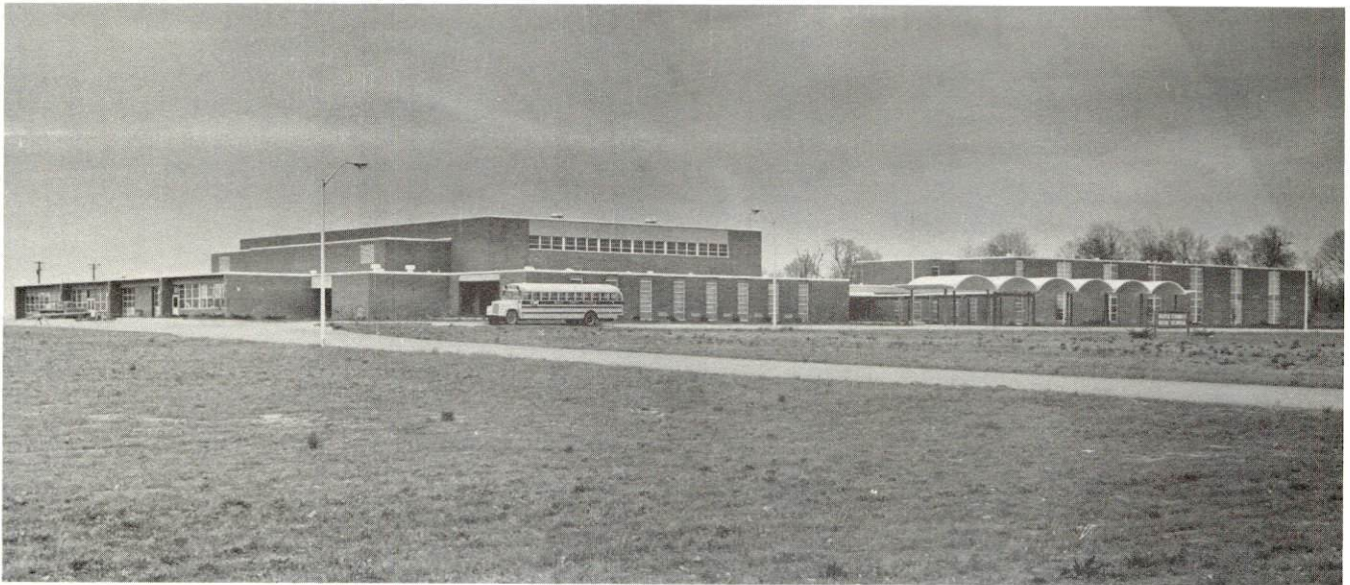
Area	1968	1959	% Change
Boyle County	\$ 61,182,000	\$ 34,033,000	+ 80.7
Labor Market Area	216,788,000	117,739,000	+ 84.1
Kentucky	8,360,000,000	4,655,000,000	+ 79.6

PER CAPITA PERSONAL INCOME 8/

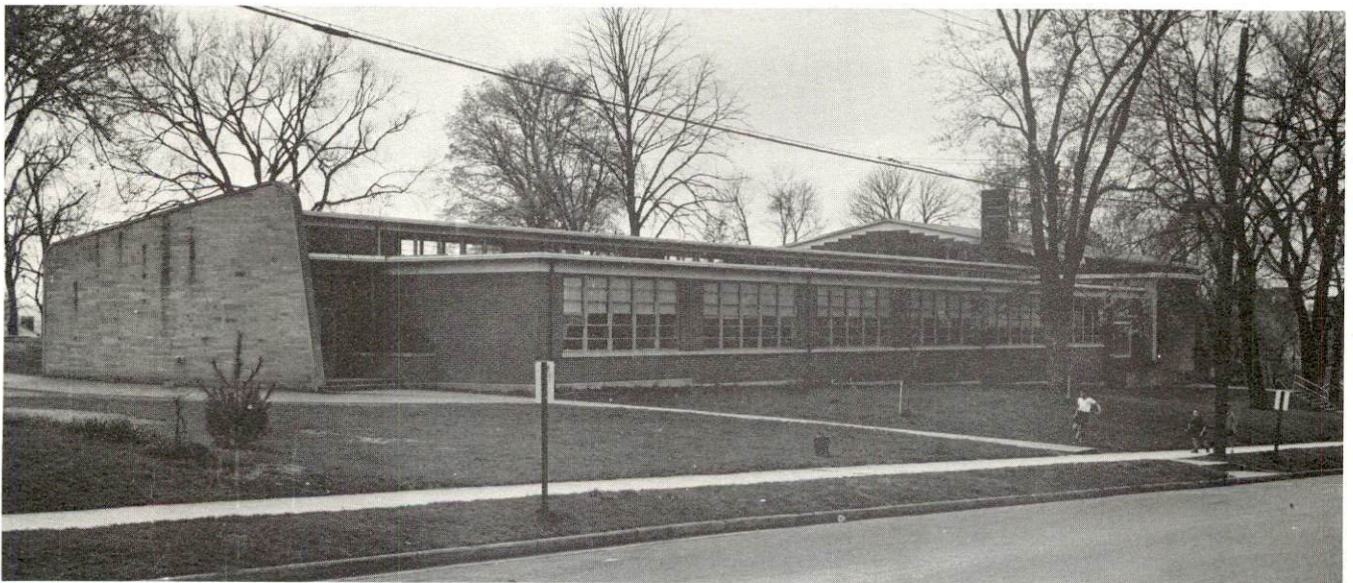
Area	1968	1959	% Change
Boyle County	\$ 3,206	1,652	+94.0
Labor Market Area	1,339 to 3,206	\$684 to 1,652	+95.7 to 94.0
Kentucky	2,614	1,552	+68.4



DANVILLE HIGH SCHOOL



BOYLE COUNTY HIGH SCHOOL



JENNIE ROGERS SCHOOL

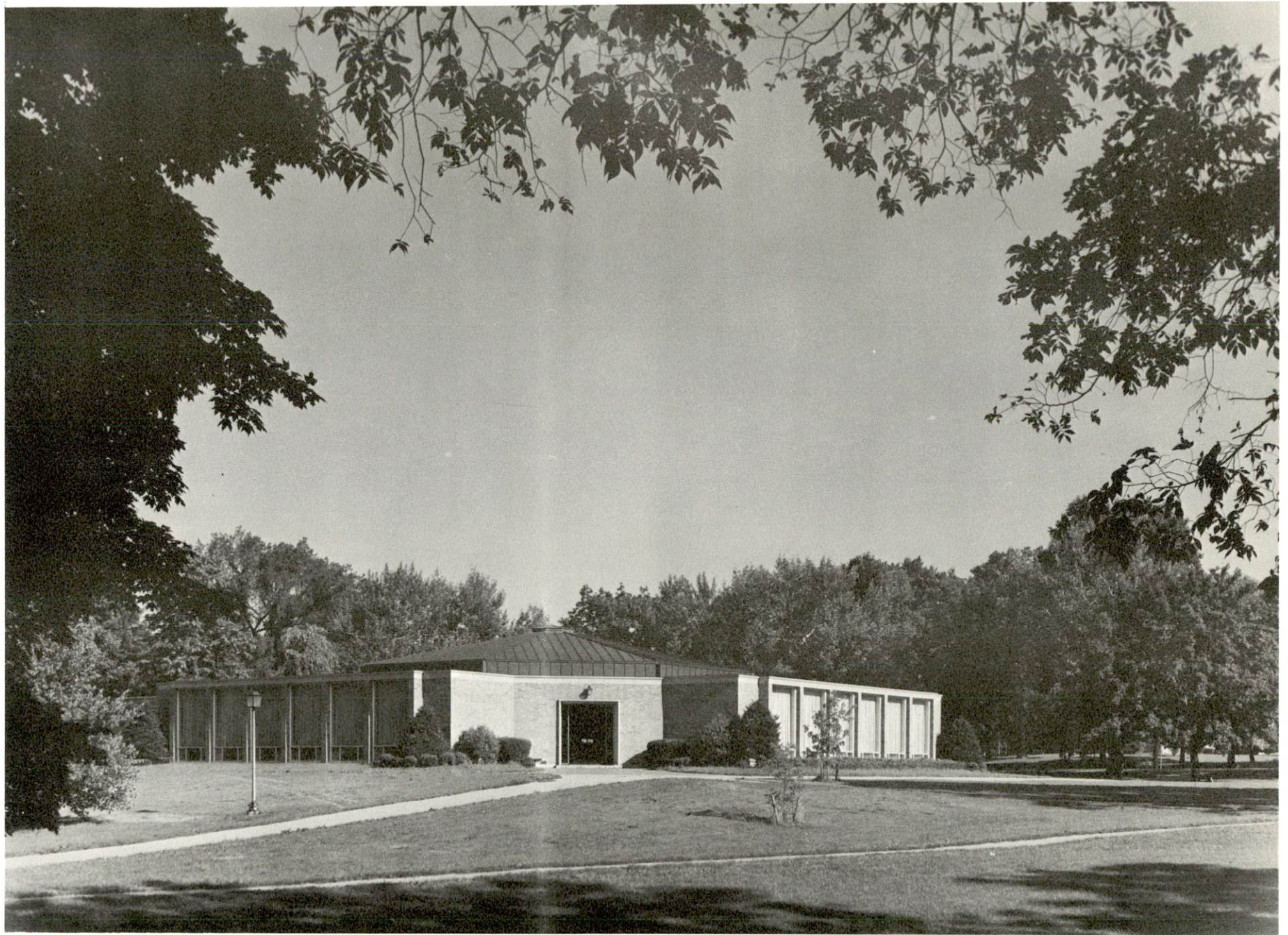
EDUCATION

Public Schools

	<u>Danville Independent</u>	<u>Boyle County</u>
Total Enrollment	2,402	2,181
Elementary	1,245	1,549
Junior High	432	None
High School	725	632
Student-Teacher Ratio	21-1	23-1
Elementary	22-1	24-1
Junior High	23-1	None
High School	19-1	20-1
State Rating of High School	Comprehensive	Comprehensive
Other Accreditations	Southern Association of Colleges and Schools	
Percent High School		
Graduates to College	59.4	39.3
Current Expenditures Per Pupil	\$403.19	\$381.61
Bonded Indebtedness, June 30, 1969	\$3,161,456	\$1,009,000

Parochial, Private and Special Schools

	<u>Kentucky School for Deaf</u>	<u>Parochial</u>
Total Enrollment	321	95
Elementary	258	95
High School	63	
Student-Teacher Ratio	8-1	15-1
Elementary	9-1	15-1
High School	6-1	



CENTRE COLLEGE DINING COMMONS

Vocational Schools

	<u>Nearest Area School</u>	<u>Nearest Extension Center</u>
Location	Lexington	Lancaster
Miles Distant	35	12
Curriculum	Data processing	Appliance repair
	General clerical	Auto mechanics
	Secretarial-steno	Carpentry
	Practical nursing	Drafting
	Communication electronics	Welding
	Tool & die design	
	Auto body repair	
	Auto mechanics	
	Commercial foods	
	Drafting	
	Electricity	
	Machine shop	
	Office machine repair	
	Printing	
	Radio & TV repair	
	Sheet metal	
	Welding	

Colleges and Universities

<u>Name</u>	<u>Area - Within 50 miles</u>		<u>Highest Degree Conferred</u>
	<u>Location</u>	<u>Enrollment</u>	
Centre College	Danville	740	Baccalaureate
Asbury College	Wilmore	960	Baccalaureate
Berea College	Berea	1,394	Baccalaureate
Campbellsville College	Campbellsville	985	Baccalaureate
Eastern Kentucky University	Richmond	9,180	Masters
Georgetown College	Georgetown	1,385	Masters
Kentucky State College	Frankfort	1,610	Baccalaureate
Transylvania College	Lexington	888	Baccalaureate
University of Kentucky	Lexington	15,267	Ph. D., M. D., D. M. D., J. D.

TRANSPORTATION

Rail

Lines Serving - Southern Railway System, Louisville & Nashville
Railroad

Services - Freight, passenger, switching, piggyback, REA Express
pickup and delivery

RAILWAY TRANSIT TIME FROM DANVILLE, KENTUCKY, TO: 9/

City	No. of Days		City	No. of Days	
	CL			CL	
Atlanta, Ga.	2		Los Angeles, Calif.	7	
Birmingham, Ala.	2		Louisville, Ky.	1	
Chicago, Ill.	3		Nashville, Tenn.	3	
Cincinnati, Ohio	1		New Orleans, La.	3	
Cleveland, Ohio	3		New York, N. Y.	5	
Detroit, Mich.	3		Pittsburgh, Pa.	4	
Knoxville, Tenn.	2		St. Louis, Mo.	2	

Truck Service

Company

Home Office

Bestway Express, Inc.	Nashville, Tennessee
Cooper-Jarrett, Inc.	Orange, New Jersey
Davenport's Transfer	Harrodsburg, Kentucky
Lawrenceburg Transfer Co.*	Lawrenceburg, Kentucky
Ellis Motor Freight, Inc.*	Lebanon, Kentucky
McLean Trucking Co.*	Winston-Salem, North Carolina
O.K. Trucking Co.	Cincinnati, Ohio
Smith's Transfer Corporation of Staunton, Virginia	Staunton, Virginia
Turner Expediting Service	Louisville, Kentucky

*Maintain terminal facilities.

HIGHWAY MILES AND TRUCK TRANSIT TIME IN DAYS FROM
DANVILLE, KENTUCKY, TO SELECTED MARKET CENTERS ^{10/}

City	Delivery			City	Delivery		
	Highway Miles	Time (Days)	Time (Days)		Highway Miles	Time (Days)	Time (Days)
Atlanta, Ga.	340	2	1	Los Angeles, Cal.	2,197	7	5
Birmingham, Ala.	381	2	1	Louisville, Ky.	68	ON	1/2
Chicago, Ill.	382	3	1	Nashville, Tenn.	190	2	1
Cincinnati, Ohio	119	2	1	New Orleans, La.	813	5	3
Cleveland, Ohio	363	3	1	New York, N. Y.	727	4	2
Detroit, Mich.	365	3	1	Pittsburgh, Pa.	405	3	2
Knoxville, Tenn.	170	2	1	St. Louis, Mo.	349	2	1

Air

	<u>Local</u>	<u>Nearest Commercial</u>
	Goodall Field	Blue Grass Field
Location:	Danville	Lexington
Runways:	2 paved	3 paved
Length:	2,400 x 72 ft., 3,400 x 75 ft.	6,500 x 150 ft.; 3,500 x 150 ft.; 3,500 x 150 ft.
Traffic		
Control:	Wind sock	Tower; approach and ground control, ILS system
Lighting:	Sundown to sunrise	Approach lighting system, beacon, runways and obstruction lighted
Services:	80-100 octane, hangar, tiedown, flight instruction, charter	Eastern, Delta, Piedmont and Allegheny Airlines, freight service, 80, 100, and 145 octane, jet fuel, major A & E repairs, storage, restaurant, Weather Bureau, charter service, taxi, car rental

Bus Southern Greyhound, Trailways Bus Lines

Taxi 24-hour, radio dispatched service by:
Yellow Cab Co.
Bluegrass Cab Co.
Diamond Cab Co.

Rental Service Car, trailer and truck

POWER AND FUEL

Electricity

Company serving Danville - Kentucky Utilities Company
Source of power - Kentucky Utilities Company
Total generating capacity - 740,000 KW
Industrial rates furnished by - Kentucky Utilities Company, Industrial
Development Department, Lexington, Kentucky

Company serving Boyle County - Inter-County RECC
Source of power - East Kentucky RECC
Total generating capacity - 310,000 KW
Industrial rates furnished by - East Kentucky RECC, Winchester,
Kentucky

Natural Gas

Company serving - Western Kentucky Gas Company
Source of supply - Tennessee Gas Transmission Company
Size of transmission lines - 24-inch and 26-inch
Distribution lines - 2- to 8-inch
BTU content - 1,020; Specific gravity - .59
Distribution pressure - 40 psi; Peak demand at 0° F. - 8,974,000 cu. ft.

Rates:

Rate 1 - Gas service under this rate is considered firm except during unforeseeable emergencies, i. e., line breakage, etc. The cost shall be 58 1/2¢ per thousand cubic feet per month, plus \$5.25. Minimum charge: \$1.50 per meter per month.

Rate 3-A - Gas service under this rate is available only to customers who require and contract for not less than 100,000 cubic feet per day, or 24,000,000 cubic feet per year. Service may be 100 percent firm, or a combination of the two. The cost shall be:

Firm Service: Shall be purchased under "General Service Rate 1."

Interruptible Service:

First	2,000,000 cubic feet per month	\$950.00
Next	2,000,000 cubic feet per month	44.5¢ per 1,000 cu. ft.
Next	2,000,000 cubic feet per month	42.5¢ per 1,000 cu. ft.
All additional	cubic feet per month	36.5¢ per 1,000 cu. ft.

Minimum Charge: \$950.00 per meter per month

WATER AND SEWERAGE

Water

Company serving - Danville Water Works
Source - Herrington Lake
Treatment plant capacity - 5 million gpd
Average daily consumption - 2.5 million gallons
Peak daily consumption - 3.0 million gallons
Type treatment - flocculation, sedimentation, filtration, chlorination
Storage capacity - 3,150,000 gallons
Average pressure - 70 psi
Average temperature - 50°
Size mains - 6, 8, 10, 12 inches

MONTHLY WATER RATES FOR WHOLESALE AND INDUSTRIAL CONSUMERS

First	20,000 cubic feet - 30¢ per 100 cubic feet (minimum monthly bill \$60)
Next	80,000 cubic feet - 20¢ per 100 cubic feet
Next	100,000 cubic feet - 18¢ per 100 cubic feet
Next	300,000 cubic feet - 16¢ per 100 cubic feet
Next	500,000 cubic feet - 14¢ per 100 cubic feet
All over	1,000,000 cubic feet - 12¢ per 100 cubic feet

Surface water sources - Herrington Lake, Dix River, small stream
impoundments
Average discharge, Dix River - 430 cfs
Expected ground water yield - 5 gpm
Yield along main streams - 5 to 50 gpm

Sewerage

Company serving - Danville Water Works
Design capacity - 2.2 million gpd
Average daily flow - 1.8 million gallons
Treatment - primary and secondary
Type treatment - trickling filters, drying beds, chlorination of effluent
Treated effluent discharged into:- Clark's Run
Size of sanitary mains - 8, 10, 12, and 15 inches
Size of storm mains - 15 to 36 inches
Rates - 40 percent of the water bill

LOCAL GOVERNMENT

City

Structure - Mayor - 4 year term; 4 commissioners - 2 year terms;
 City manager
 Budget 1968-69 - General Fund \$690,500; Water and Sewer Fund -
 \$444,000
 Fees and licenses - Vehicle license - \$10 per annum; Business net
 profits tax - \$25 to \$250; Payroll tax - One percent of gross wages
 (effective October 1, 1969)

County

Structure - County judge - 4 year term; 6 magistrates - 4 year terms
 Budget 1968-69 - General Fund \$266,489; Road Fund \$128,000

Assessed Value of Property - 1969

<u>Classes of Property*</u>	<u>Danville</u>	<u>Boyle County</u>
Real Estate	\$46,297,428	\$98,654,550
Tangibles	3,596,156	19,992,867
Public Service	7,371,398	23,438,314

Local General Property Tax Rates per \$100 of Assessed Valuation - 1969

<u>Taxing Unit**</u>	<u>Danville</u>	<u>Boyle County</u>
State	\$.015	\$.015
County	.145	.145
School	.871	.633
City	.370	
Total	\$1.401	\$.793

*Property assessed at 100 percent of fair value.

**Manufacturing machinery, raw materials inventories and goods in
 process inventories are not subject to local tax. State rate is only
 \$0.15 per \$100.

Planning and Zoning

Agency: - Danville-Boyle County Planning Commission

Plans completed - Zoning ordinance, comprehensive plan, subdivision regulations

Plans in process - Transportation plan

Codes adopted - All major codes and ordinances

Other programs - Model Cities, public housing, Urban Renewal

Safety

<u>Police</u>	<u>Danville</u>	<u>Boyle County</u>
Total staff	22	4
Radio-patrol cars	4	3
Other equipment	Standard	Standard

<u>Fire</u>	<u>Danville</u>	<u>Boyle County</u>
American Insurance Association Fire Rating	6 & 9	--
Full-time staff	20	--
Volunteers	20	Approx. 80
Equipment:		
1,000 gpm pumpers	3	2
750 gpm pumpers	1	4
ladder truck	1	--
utility truck	1	--

Rescue Service

Danville-Boyle County Rescue Squad:

Number of volunteers - 30

Equipment - 2 radio dispatched trucks

Personnel training - standard and advanced first aid

Sanitation

	<u>Danville</u>	<u>Boyle County</u>
Type service	municipal	private contractor
Cost	free	approx \$2.65/month
Collection frequency	twice weekly	by contract
Trash pickup	last Wed., Thurs., Friday of month	by contract
Disposal method	sanitary land fill	sanitary land fill

HEALTH

Hospitals

	<u>Number</u>	<u>Beds</u>
General hospitals	1	114
Psychiatric hospitals	1 (state operated)	848

General hospital facilities - 3 operating rooms, emergency room, X-ray and pathology equipment, laboratory, intensive care unit

Medical staff - 18 doctors, 26 registered nurses, 54 graduated licensed practical nurses, 34 licensed practical nurses, urologist, anaesthesiologist

Nursing Homes

	<u>Number</u>	<u>Beds</u>
Extended Care Homes	1	50
Personal Care Homes	3	76

Public Health

Facility - Boyle County Health Center
Staff - Doctor (part-time), nurse, sanitarian, clerk
Budget 1969-70 - \$32,789.86

Mental Health

Facility - Comprehensive Care Center
Staff - Psychiatrist, 5 social workers, a registered nurse

OTHER LOCAL FACILITIES

Communications

Telephone - South Central Bell Telephone Company
Services - all standard services

Telegraph - Western Union
Services - office and telephone

Postal - Class -1 U. S. Post Office
Mail received - 4 times daily
Mail dispatched - 4 times daily

Newspaper dailies - Danville Advocate-Messenger
Circulation - 6,500

Radio - WHIR-AM: WMGE-FM
Hours of operation AM - 6 a. m. - midnight
Hours of operation FM - 7 a. m. - midnight
Stations received from - Louisville and Lexington, Kentucky,
Cincinnati, Ohio

Television - No local station
Cable service - Danville Cablevision
Reception from - Louisville and Lexington, Kentucky, Cincinnati, Ohio
Kentucky Educational Television - Channel 8, Lexington transmitter

Library Services

Public libraries - Danville Free Public Library
Size collection - 23,219 volumes
Circulation, 1968 - 15,135
Services - periodicals lending

Private libraries - Grace Doherty Library, Centre College
Size collection - 88,000
Special collections - Kentucky
Services - open to the public

Religious Institutions

Number of churches - 27

Denominations - Baptist, Catholic, Christian, Church of Christ, Church of God, Episcopal, Methodist, Nazarene, Pentecostal, Presbyterian, Latter Day Saints, Jehovah's Witnesses, Salvation Army

Financial Institutions

<u>Bank</u>	<u>Statement as June 30, 1969</u>	
	<u>Assets</u>	<u>Deposits</u>
Bank of Danville	\$ 8,648,550.81	\$ 7,962,370.68
Citizens National Bank	9,133,470.11	8,032,936.69
Farmers National Bank	13,334,338.06	10,958,625.22
<u>Savings and Loan Associations</u>	<u>Assets</u>	<u>Shared Accounts</u>
Central Kentucky Building & Loan Association	\$ 8,249,036.80	\$ 7,498,241.17
Commonwealth First Federal Savings & Loan Association	9,631,449.50	8,910,909.07

Hotels and Motels

Henson Hotel	24 rooms
Danville Terrace Motel	38 units
Gray Gables Motel	14 units
Huntwood Motel	31 units
Suburban Motor Lodge	36 units
Holiday Inn (under construction)	100 units

Clubs and Organizations

Business and Civic - Kiwanis, Chamber of Commerce, Rotary, Optimist, Lions, Jaycees, Civitan, Newcomers, Boyle County Medical Society, Danville Historical Society, Fish & Game Club, Danville Ministerial Association

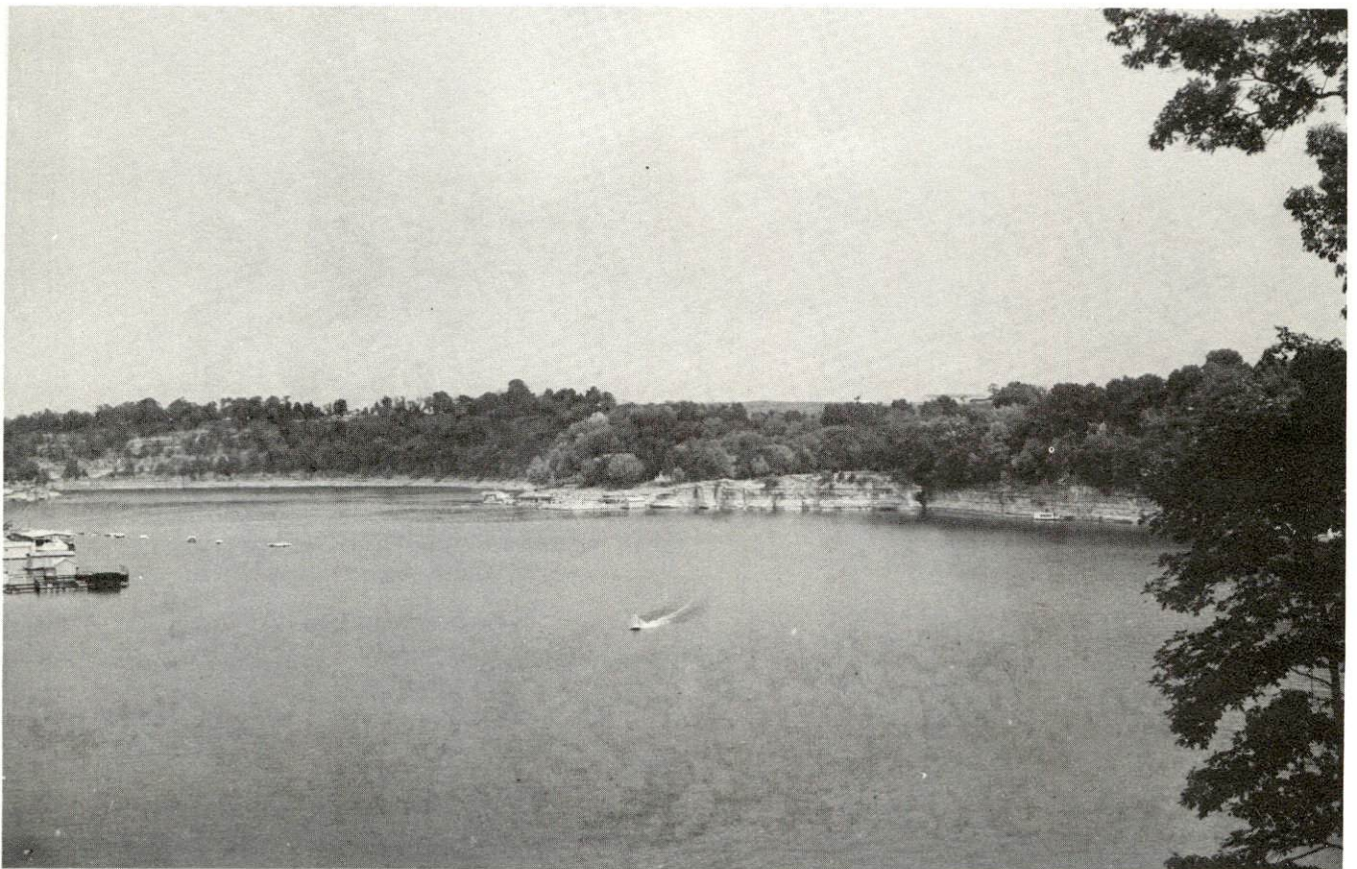
Fraternal - Knights of Pythias, Masons, IOOF, American Legion, Rebekah Lodge, Eastern Star

Women's - DAR, Women's Club, B&PW Club, Beta Sigma Phi, Danville Garden Club, Danville Junior Women's Club, Little Garden Club, AAUW, McDowell Hospital Women's Auxiliary, United Church Women

Youth - Boy Scouts, Girl Scouts, Little League, FFA, FHA, 4-H



DANVILLE COUNTRY CLUB



HERRINGTON LAKE

RECREATION

Local

Public Recreation Facilities

Supervised program - Danville-Boyle County Recreation Department

Parks - 2

Playgrounds - 7

Swimming pools - 3

Golf courses - Bright Leaf

Tennis courts - 2

Baseball diamonds - 4

Football fields - 4

Private Recreation Facilities

Country clubs - 2

Golf courses - 2

Swimming pools - 7

Movie theaters - 2

Bowling lanes - 1

Sports fields - 1

Other - YMCA

Tourist Attractions

Constitution Square State Shrine

McDowell Home & Apothecary Shop

Old Crow Inn

Wilderness Road Village-of-the-Arts

Centre College

Cultural Events

Community Arts Series

Pioneer Playhouse

Area (Within 25 miles)

State Parks - Old Fort Harrod State Park

State Shrines - Perryville Battlefield, William Whitley House,
Isaac Shelby

National Parks and Shrines - None

Other attractions - Shakertown, Herrington Lake

Cultural events - Legend of Daniel Boone (Harrodsburg)

AGRICULTURE - NATURAL RESOURCES - CLIMATE 11/

Agriculture

	<u>Boyle County</u>	<u>Labor Market Area</u>
Total land area	117,120 acres	1,344,000 acres
Percent of area in farm land	89.9 percent	87.0 percent
Number of farms	889	10,075
Average size of farms	119 acres	118.5 acres
1964 value of all farm products	\$4,840,177	\$44,465,353
Value per farm	7,563	6,368
Total crop sales	2,569,533	23,360,463
Total livestock and livestock products	2,254,639	21,115,158
1967 agricultural production included:		
Burley tobacco	4,100,000 lbs.	37,000,000 lbs.
Corn	389,000 bu.	2,710,000 bu.
Cattle and calves	27,800 head	248,100 head
Hogs and pigs	5,500 head	71,700 head
Milk production (1966)	16,100,000 lbs.	258,000,000 lbs.

Natural Resources

Principal mineral resources	Limestone
Other mineral resources	Clay, shales, vein minerals
Acres of commercial forest land	20,100
Most abundant tree species	White oak, red oak, hickory, ash, maple, red cedar, black walnut

Climate

Temperature (30-year record)	
Annual mean	55.6°
Average annual 1967	54.4°
Record highest September, 1954	104.0°
Record lowest January, 1963	19.0°
Mean annual degree-days	4,529
Precipitation (30-year record)	
Mean annual total	46.41 inches
Mean annual snow and sleet	16.10 inches
Total precipitation 1967	45.42 inches
Mean number days precipitation .10 inches or more -	86
Average number days thunderstorms	48
Prevailing winds - southerly	

HISTORY

The Boyle County area was known from the earliest colonization in Kentucky, although it was not designated a county until 1842, after 30 years of agitation for county status. It was the ninety-fourth county formed and named for John Boyle, an early settler who was a member of the U. S. Congress for three terms and Chief Justice of Kentucky for 16 years.

The first settlement in the county was in 1775. Pioneers were attracted to the area and within a decade enough progress had been made so that Danville became the center of efforts to make Kentucky County, Virginia, a separate state. Ten conventions were necessary before Kentucky finally attained Statehood on June 1, 1792. Danville was the first capitol for a brief period, but the capitol was finally moved to Frankfort.

Danville is aptly named "The City of Firsts" because:

- * The first post office west of the Allegheny Mountains was established in Danville in 1792.
- * Dr. Ephriam McDowell successfully performed the first ovariectomy on December 25, 1869.
- * The Kentucky School For The Deaf, established in 1823, was the first school of its kind in the world to be operated at governmental expense.
- * Transylvania and Centre Colleges were founded at Danville. Transylvania was chartered by the Virginia Assembly in 1780, established in 1783, and moved to its present Lexington site in 1793. Centre was chartered by the Kentucky Legislature in 1819 and has become one of the town's points of pride for it boasts of many distinguished alumni, including two former U. S. Vice Presidents - Richard M. Johnson and John C. Breckinridge - and a former Chief Justice of the Supreme Court - Fred M. Vinson.

SOURCES OF INFORMATION

- 1/ U. S. Department of Commerce, Bureau of the Census, Census of Population, 1950, 1960. Department of Rural Sociology, University of Kentucky, Kentucky County Provisional Population Estimates: January 1, 1969. Danville-Boyle County Planning Commission.
- 2/ Kentucky Department of Economic Security, Division of Research and Statistics.
- 3/ Kentucky Department of Economic Security, Number of Workers in Manufacturing Industries Covered by Kentucky Unemployment Insurance Law Classified by Industry and County, September 1959, September 1968.
- 4/ Kentucky Department of Commerce, 1969 Kentucky Directory of Manufacturers.
- 5/ Kentucky Department of Economic Security, Division of Employment Service, Danville Office.
- 6/ Kentucky Department of Economic Security, Kentucky Labor Supply Estimates by County, January 1969. Kentucky Department of Commerce, Future Labor Supply By 1975.
- 7/ University of Kentucky, Office of Development Services and Business Research, Total Personal Income For Kentucky.
- 8/ University of Kentucky, Office of Development Services and Business Research, Per Capita Income in Kentucky.
- 9/ Freight Agents, Southern Railway System, Louisville & Nashville Railroad, Danville, Kentucky.
- 10/ Lawrenceburg Transfer Co.
- 11/ U. S. Department of Commerce, Bureau of the Census, Census of Agriculture, 1964. U. S. Department of Commerce, Environmental Science Services Administration, Climatological Data, 1967.

All other information was obtained from governmental offices, local businesses and organizations.