

1971

## Industrial Resources: Clay County - Manchester

Kentucky Library Research Collections  
Western Kentucky University, [spcol@wku.edu](mailto:spcol@wku.edu)

Follow this and additional works at: [https://digitalcommons.wku.edu/clay\\_cty](https://digitalcommons.wku.edu/clay_cty)

 Part of the [Business Administration, Management, and Operations Commons](#), [Growth and Development Commons](#), and the [Infrastructure Commons](#)

---

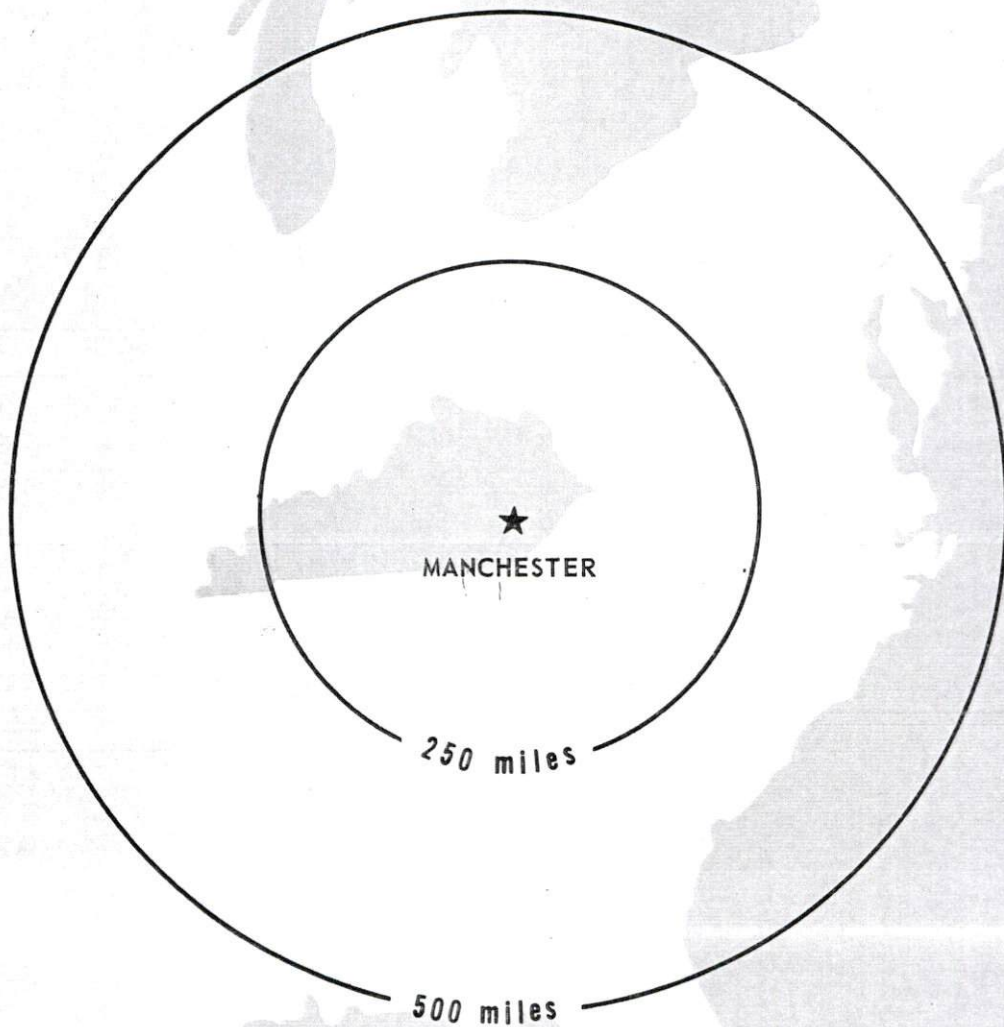
### Recommended Citation

Kentucky Library Research Collections, "Industrial Resources: Clay County - Manchester" (1971). *Clay County*. Paper 8.  
[https://digitalcommons.wku.edu/clay\\_cty/8](https://digitalcommons.wku.edu/clay_cty/8)

This Report is brought to you for free and open access by TopSCHOLAR®. It has been accepted for inclusion in Clay County by an authorized administrator of TopSCHOLAR®. For more information, please contact [topscholar@wku.edu](mailto:topscholar@wku.edu).

# INDUSTRIAL RESOURCES

## ***MANCHESTER, KENTUCKY***



# CURRENT INDUSTRIAL RESOURCES

## CURRENT INDUSTRIAL RESOURCES, MANCHESTER, KENTUCKY

This is a 1972 supplement to "Industrial Resources, Manchester, Kentucky" which was published in 1971.

Kentucky Atlas 1972

### Population

	<u>1970</u>	<u>1960</u>
Manchester	1,664	1,868
Clay County	18,481	20,748
Labor Market Area (Includes Clay, Bell, Jackson, Knox, Laurel, Leslie, Owsley, and Perry Counties.)	153,587	168,191

### General Employment Characteristics

<u>Industry</u>	<u>Employment 1970</u>	
	<u>Clay County</u>	<u>Labor Market Area</u>
TOTAL	3,400	34,200
Agricultural	500	3,500
Nonagricultural	2,900	30,700
Manufacturing	100	3,600
Trade and Services	667	9,501
Government	900	7,300
Other	1,233	10,299

### Manufacturing Employment

<u>Type Industry</u>	<u>Clay County</u>			<u>Labor Market Area</u>		
	<u>1971</u>	<u>1961</u>	<u>%Change</u>	<u>1971</u>	<u>1961</u>	<u>%Change</u>
TOTAL	149	201	-25.9	3,870	2,123	+ 82.3
Food & kindred products	0	0	0	683	461	+ 48.2
Tobacco	0	0	0	3	2	+ 50.0
Apparel, textiles, leather	0	0	0	1,306	285	+358.2
Lumber & furniture	145	196	-26.0	1,010	1,133	- 10.9
Printing, publishing, paper	4	5	-20.0	89	56	+ 58.9
Chemicals, petroleum, coal, rubber	0	0	0	131	84	+ 56.0
Stone, clay & glass	0	0	0	63	43	+ 46.5
Machinery & metal products	0	0	0	585	69	+747.8



There are presently 7 manufacturing firms in Clay County.  
Major firms, employment, and year started operations:

<u>Firms</u>	<u>Employment</u>	<u>Year Started Operations</u>
Etowah Manufacturing Company of Kentucky	50	1968
Boone Boy Industries	23	1964
Clay County Furniture Manufacturing, Incorporated	14	1969

Labor Supply

	<u>Clay County</u>			<u>Labor Market Area</u>		
	<u>Total</u>	<u>Male</u>	<u>Female</u>	<u>Total</u>	<u>Male</u>	<u>Female</u>
Current	2,317	923	1,394	19,529	8,575	10,954
Potential additions next five years	2,311	1,184	1,127	17,714	9,004	8,710

Personal Income

Clay County, 1970: Total - \$24,185,000; Per Capita - \$1,299  
1960: Total - \$13,008,000; Per Capita - \$ 627

Education

The Clay County School System includes 3 high schools with basic and standard ratings, and 18 elementary schools.

Nearest Vocational School: Hazard Area Vocational School, Hazard, Kentucky, 55 miles away

Courses offered: General Clerical, Secretarial-Steno, Practical Nursing, Electronics, Highway Technology, Auto Body Repair, Auto Mechanics, Carpentry, Commercial Foods, Cosmetology, Drafting, Electricity, Heavy Equipment, Machine Shop, Welding



Power and Fuel

Electric Distributors

Kentucky Utilities Company  
Jackson County RECC

Source of Supply

Kentucky Utilities Company  
East Kentucky Power Cooperative

Natural Gas Distributor

Peoples Gas Company

Specific Gravity

. 70

Btu Per Cu. Ft.

1,150

Water and Sewerage

Water: Daily treatment capacity - 500,000 gallons; average daily use - 235,000 gallons; maximum daily use - 300,000 gallons; storage capacity - 235,000 gallons; size distribution lines - 3, 4, 8, and 10 inches

Sewerage: Type treatment - primary and secondary; design capacity - 350,000 gallons per day; size of sewer mains - 8 to 10 inches

Local Government

Property Tax Rates

Property tax rates per \$100 of assessed valuation, 1971

	<u>Manchester</u>	<u>Clay County</u>
State	\$ .015	\$ .015
County	.187	.187
School	.366	.366
City	.300	
Total	\$ .868	\$ .568

Police Protection: Number of law enforcement officers - 4 (city); 6 (county)

Fire Protection: Number of full-time firemen - 2; number of volunteer firemen - 30; American Insurance Association fire rating, City of Manchester, Class 7

Industrial Sites

There are two industrial sites available for use in Manchester.

## MANCHESTER INDUSTRIAL SITES

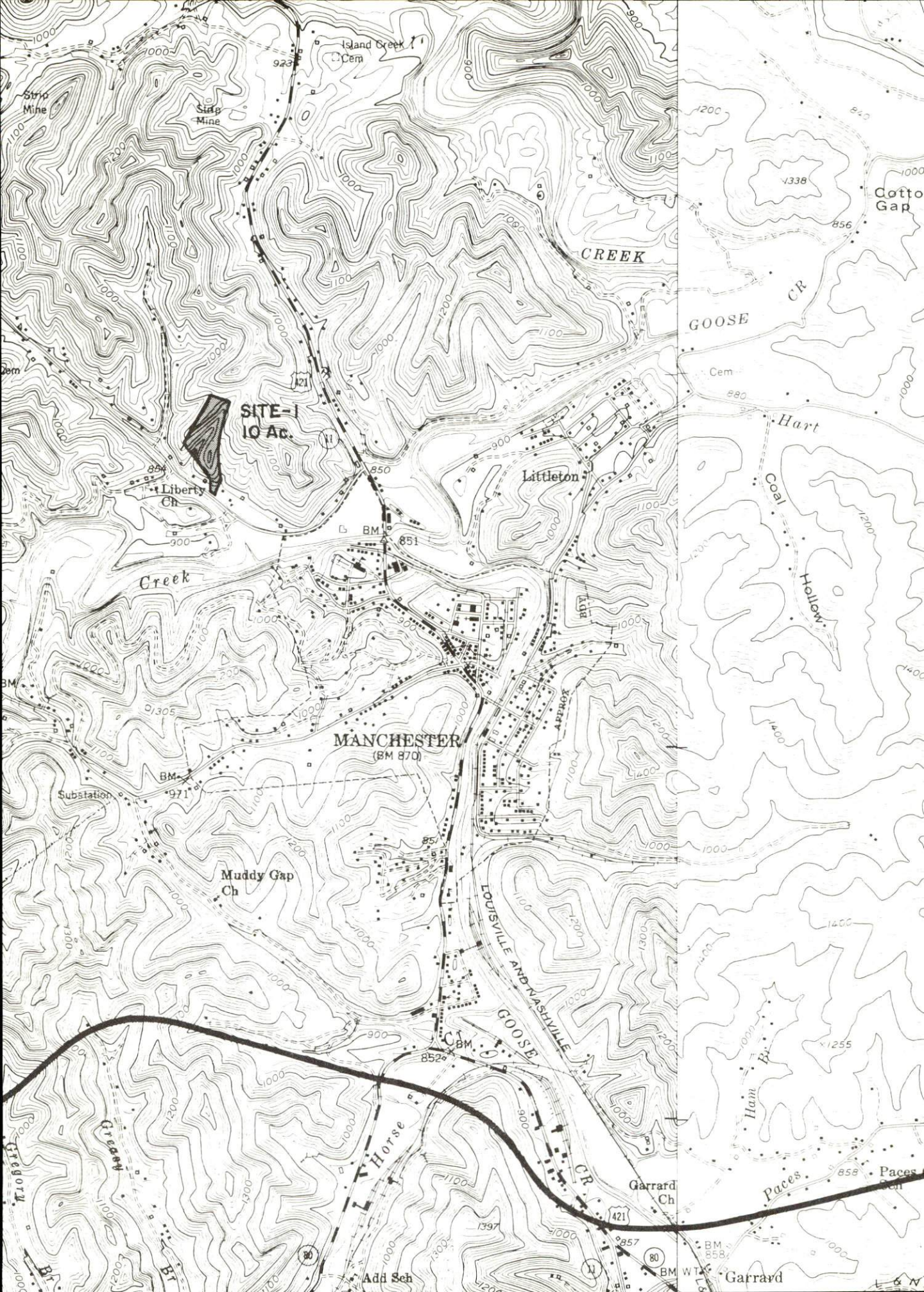
1971

For further information concerning the following available industrial sites, contact Glenn Combs, Clay County Development Association, Manchester, Kentucky, or the Kentucky Department of Commerce, Frankfort, Kentucky.

SITE #1: ACREAGE: 10 acres  
LOCATION: One-fourth mile northwest of city limits  
HIGHWAY ACCESS: Paved road to U. S. 421  
RAILROADS: Not rail served  
WATER: Manchester Municipal Water Works  
SIZE LINE: 8-inch line 2,500 feet from site  
GAS: Peoples Gas Company  
SIZE MAIN: 6-inch main 1,600 feet from site  
ELECTRICITY: Kentucky Utilities Company  
SEWERAGE: Municipal sewerage service, main  
2,500 feet from site  
OWNERSHIP: Clay County Industrial Foundation, Inc.

SITE #2: ACREAGE: 15 acres  
LOCATION: 3 miles northeast of Manchester  
HIGHWAY ACCESS: Beech Creek Road to U. S. 421  
and Daniel Boone Parkway  
RAILROADS: Not rail served  
WATER: Manchester Municipal Water Works  
SIZE LINE: 8-inch line adjacent to site  
GAS: Peoples Gas Company  
SIZE MAIN: 6-inch main 1,500 feet from site  
ELECTRICITY: Kentucky Utilities Company  
SEWERAGE: Package plant necessary  
OWNERSHIP: City of Manchester





SITE-1  
10 Ac.

MANCHESTER  
(BM 870)

CREEK

GOOSE

Littleton

Muddy Gap  
Ch

LOUISVILLE AND NASHVILLE  
GOOSE CR.

Horse

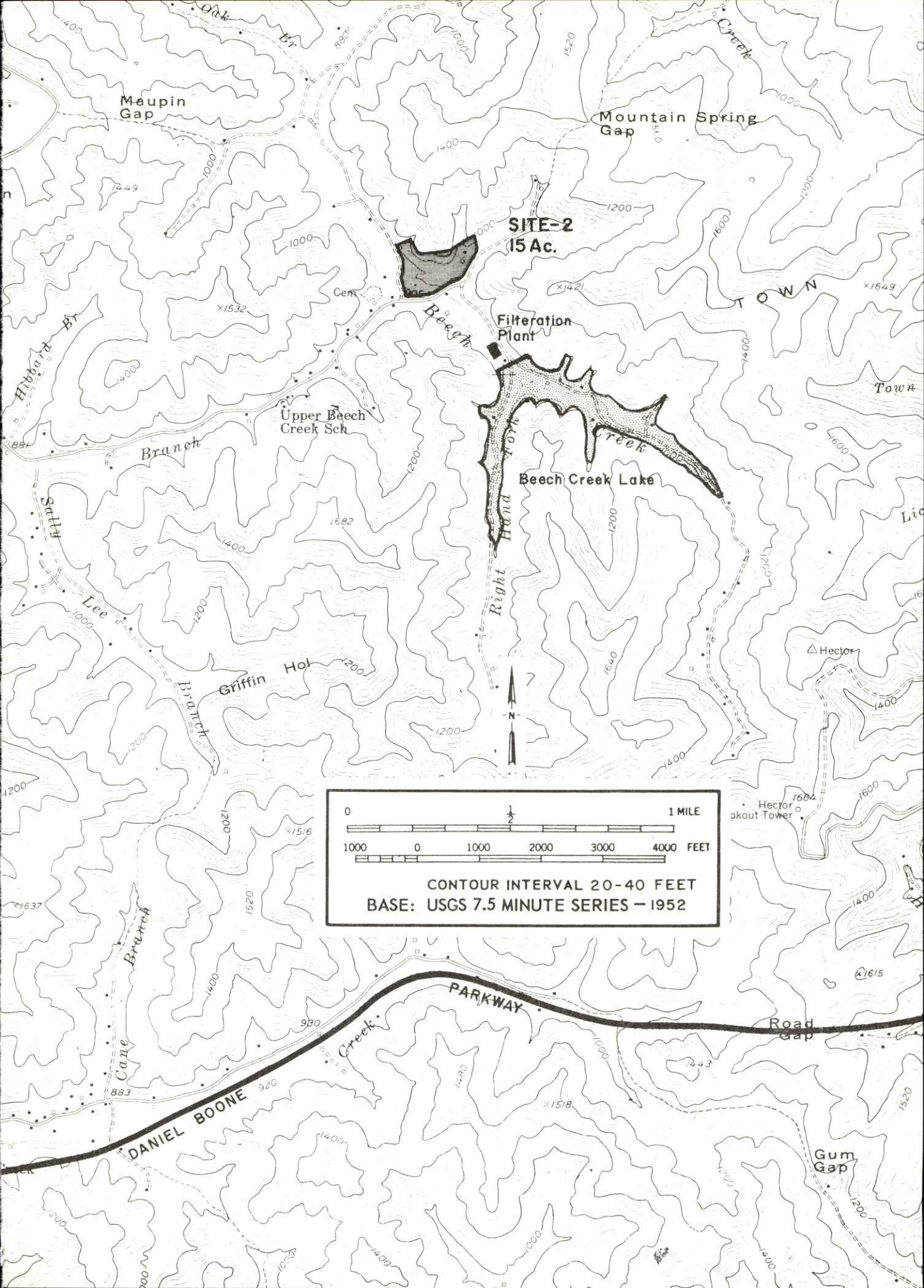
Garrard  
Ch

Paces

Add Sch

Garrard





Maupin Gap

Mountain Spring Gap

**SITE-2**  
15 Ac.

Filtration Plant

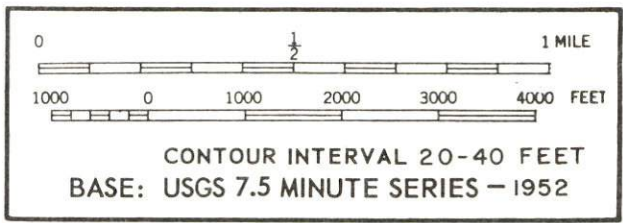
Beech Creek Lake

Upper Beech Creek Sch

Griffin Hol

DANIEL BOONE PARKWAY

Gum Gap



INDUSTRIAL RESOURCES  
MANCHESTER, KENTUCKY

Prepared by  
The Kentucky Department of Commerce  
in cooperation with  
The Clay County Development Association

1971



This copy has been prepared by the Kentucky Department of Commerce,  
Division of Research and Planning, and the cost of printing paid from  
state funds.

## TABLE OF CONTENTS

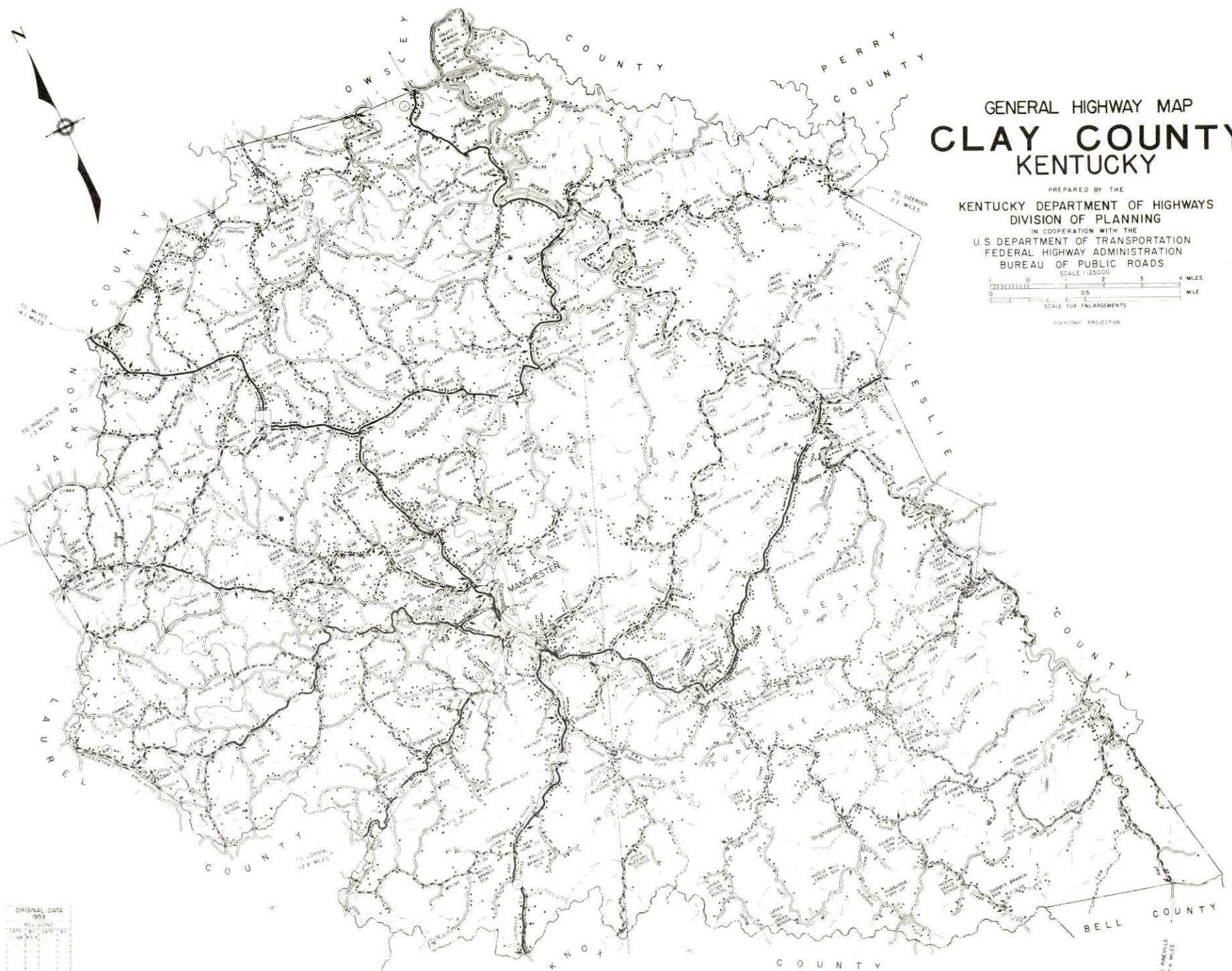
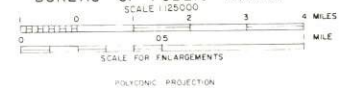
Chapter	Page
INDUSTRIAL SITES . . . . .	i
MANCHESTER, KENTUCKY - A RESOURCE PROFILE . . . . .	1
THE LABOR MARKET . . . . .	4
Population Trends . . . . .	4
General Employment Characteristics, 1969. . . . .	4
Manufacturing Employment Trends by Industry . . . . .	4
Manchester Manufacturing Firms, Their Products and Employment . . . . .	5
Wage Rates for Selected Occupations. . . . .	5
Labor Organizations . . . . .	5
Current and Future Labor Supply . . . . .	6
Total Personal Income . . . . .	6
Per Capita Personal Income . . . . .	6
EDUCATION . . . . .	7
Public Schools. . . . .	7
Parochial, Private and Special Schools. . . . .	7
Vocational Schools . . . . .	7
Colleges and Universities. . . . .	8
TRANSPORTATION. . . . .	11
Rail . . . . .	11
Truck Service . . . . .	11
Air. . . . .	12
Taxi . . . . .	12
Rental Services . . . . .	12
POWER AND FUEL. . . . .	13
Electricity . . . . .	13
Natural Gas . . . . .	13
WATER AND SEWERAGE . . . . .	14
Water. . . . .	14
Sewerage . . . . .	15

<u>Chapter</u>	<u>Page</u>
LOCAL GOVERNMENT. . . . .	16
City. . . . .	16
County. . . . .	16
Assessed Value of Property, 1970 . . . . .	16
Local General Property Tax Rates Per \$100 of Assessed Valuation, 1970 . . . . .	16
Planning and Zoning. . . . .	16
Safety . . . . .	17
Police . . . . .	17
Fire . . . . .	17
Sanitation . . . . .	17
HEALTH . . . . .	18
Hospitals . . . . .	18
Public Health. . . . .	18
OTHER LOCAL FACILITIES . . . . .	19
Communications . . . . .	19
Library Services . . . . .	19
Religious Institutions . . . . .	19
Financial Institutions . . . . .	21
Hotels and Motels . . . . .	21
Clubs and Organizations. . . . .	21
RECREATION. . . . .	22
Local . . . . .	22
Area . . . . .	22
AGRICULTURE - NATURAL RESOURCES - CLIMATE . . . . .	23
Agriculture . . . . .	23
Natural Resources . . . . .	23
Climate . . . . .	23
HISTORY. . . . .	24



# GENERAL HIGHWAY MAP CLAY COUNTY KENTUCKY

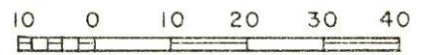
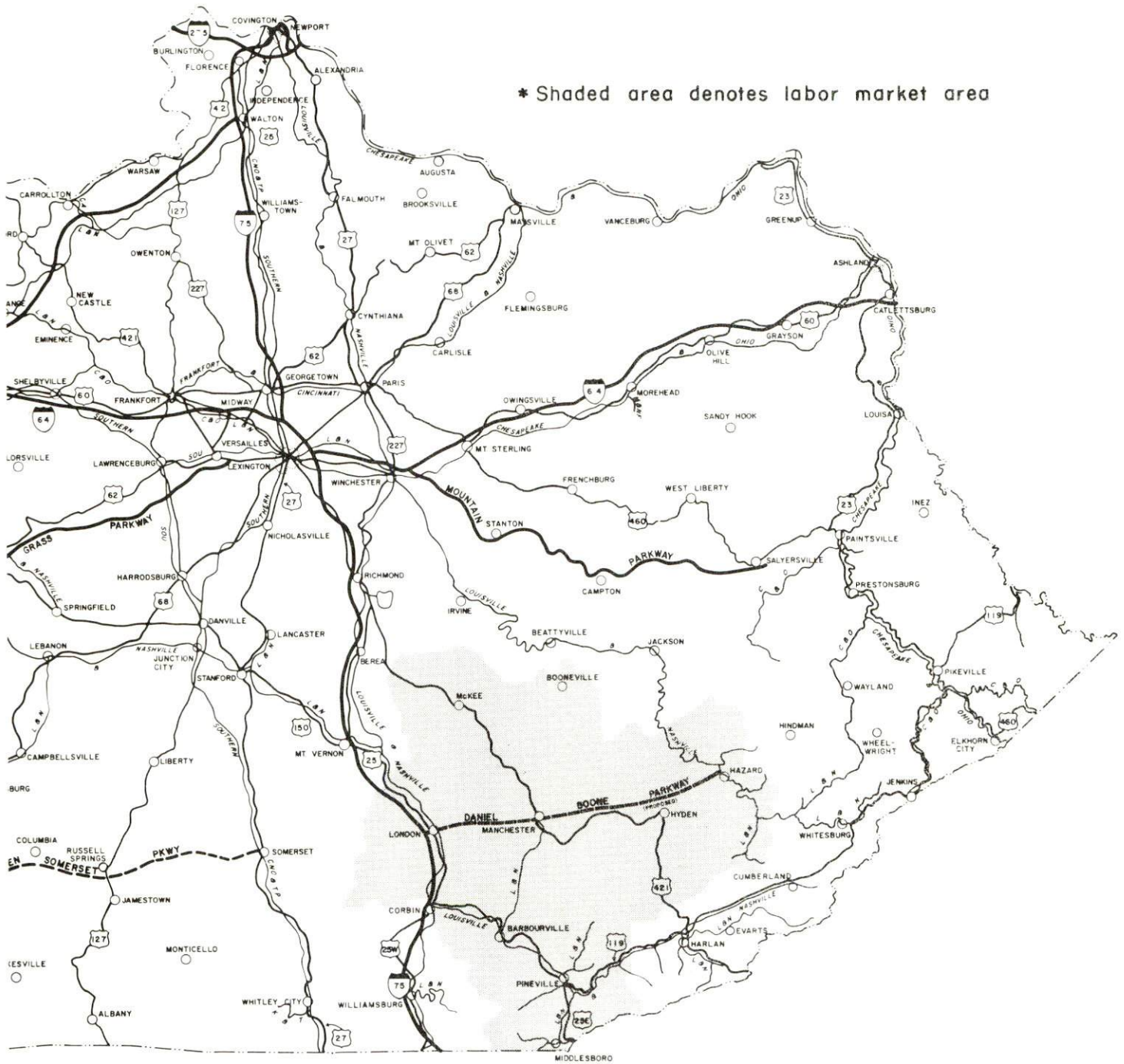
PREPARED BY THE  
**KENTUCKY DEPARTMENT OF HIGHWAYS  
 DIVISION OF PLANNING**  
 IN COOPERATION WITH THE  
 U.S. DEPARTMENT OF TRANSPORTATION  
 FEDERAL HIGHWAY ADMINISTRATION  
 BUREAU OF PUBLIC ROADS



ORIGINAL DATA	1959
REVISED	
DATE	BY
DATE	BY
DATE	BY
DATE	BY
DATE	BY
DATE	BY
DATE	BY
DATE	BY
DATE	BY

# MANCHESTER LABOR MARKET AREA

\* Shaded area denotes labor market area



GRAPHIC SCALE IN MILES



## MANCHESTER, KENTUCKY - A RESOURCE PROFILE

### Location

Manchester, the county seat of Clay County, is located in the beautiful and historic Daniel Boone National Forest in southeastern Kentucky. It is 168 miles southeast of Louisville, Kentucky, 200 miles south of Cincinnati, Ohio, and 132 miles north of Knoxville, Tennessee.

The population of Manchester in 1970 was 1,664, and the population of Clay County was 18,481.

### The Economic Framework

Total employment in Clay County in 1969 averaged 3,100 with manufacturing providing 100 jobs, government 800 jobs, mining and quarrying 640 jobs, and agriculture 600 jobs. Manufacturing employment in Clay County is primarily in the lumber and furniture industry.

Per capita personal income in the county in 1969 was \$960 or \$1,887 below the Kentucky average.

In the Manchester labor market area, which includes Clay and its seven surrounding counties, total employment in 1969 averaged 31,000 with manufacturing providing 3,960 jobs. Trade and services provided 8,600 jobs while government provided 7,200. Since 1960, the largest industrial employment growth has been in the apparel, textiles, and machinery industries.

Despite important industrial gains in recent years, the area still has a deficit of 10,855 manufacturing jobs when measured against the national industrial employment-population ratio. This indicates an area where the potential for additional manufacturing production is excellent.

### Resources for Growth

1. There is a current estimated labor supply of 8,575 men and 10,955 women available for industrial jobs in the labor market area. In addition, 10,765 young men and 10,310 young women will have become 18 years of age by 1977 and potentially available for work.

2. Manchester's transportation facilities are good. Completion of the Daniel Boone Parkway, from Manchester to London, is scheduled in December, 1971. This Parkway joins I-75 at London, 23 miles distant. Rail service is provided by the Louisville & Nashville Railroad. Commercial air service is available at London, 23 miles distant.



3. Natural gas is provided by the Peoples Gas Company. Electricity is supplied to Manchester and other parts of Clay County by the Kentucky Utilities Company. The Jackson County RECC also serves Clay County.

4. Manchester has two available industrial sites.

5. There are three senior colleges and two junior colleges within 75 miles of Manchester. The Somerset Area Vocational School, 56 miles distant, and the Clay County Extension Center, located in Manchester, offer a wide variety of courses.

### Community Programs for Improvement

Recent community improvements include:

1. Completion of the Hima-Sibert Water District
2. New hospital
3. Two new elementary schools.
4. Mercury vapor lights installed on four-lane access road to Daniel Boone Parkway
5. Construction of pollution-free coal processing plant
6. Twenty portable classrooms
7. New supermarket
8. New office for the school superintendent
9. New office in Health Department
10. Renovation of Becknell Clinic
11. Expansion of Etowah Company plant
12. Opening of Daniel Boone Parkway from Manchester to London
13. New finance company
14. Upgrading of police training and improved communication through mobile units and networks established with adjoining counties
15. Several new stores

Planned:

1. New Kentucky Utilities Company office building with auditorium
2. Doctors' office building
3. Airport
4. New municipal building
5. 100 additional low-rent housing units
6. Recreation center
7. Shopping center
8. Remodeling of courthouse
9. Dredging of Goose Creek for flood control
10. New water association for north Manchester

## Recreation, Entertainment and Livability

Manchester sponsors a supervised recreation program during the summer months. The school playgrounds, swimming pool, tennis courts, and baseball diamond are available for use.

Clay County is located in the Daniel Boone National Forest. Three of Kentucky's beautiful state parks and one national recreation park are within easy driving distance.

Cumberland Falls State Resort Park, in the heart of the Daniel Boone National Forest, has complete recreational, camping and lodging facilities. Cumberland Falls is one of two places in the world that has a moonbow - the other is at Victoria Falls on the Zambesi River in Africa.

Levi Jackson Wilderness Road State Park and Pine Mountain State Resort Park have full recreational and camping facilities. Levi Jackson Park is the home of the Mountain Life Museum. It memorializes the pioneer westward movement from Cumberland Gap along the Wilderness Road, made famous by Daniel Boone. Cumberland Gap National Park is the site of Dr. Thomas Walker's discovery in 1750 of the gap in the mountains through which Daniel Boone later led the pioneers westward.

Cultural events of note include the summer production of the world famous "Book of Job" choral drama and the annual Mountain Laurel Festival at Pine Mountain State Resort Park.

Lexington, within 2 hours driving time, offers the full gamut of cultural and sporting events as well as a wide variety of entertainment facilities. Racing - both harness and thoroughbred - is the best in the world. Year-round sports events, lectures and concerts are available at the University of Kentucky as well as art exhibits, and both local and national theatrical productions.

THE LABOR MARKET

POPULATION TRENDS <sup>1/</sup>

Area	Population			Percent Change	
	1970	1960	1950	1960-70	1950-60
Manchester	1,664	1,868	1,706	-10.9	+ 9.5
Labor Market Area	153,008	168,191	209,452	- 9.0	-19.7
Clay County	18,481	20,748	23,116	-10.9	-10.2
Bell County	31,087	35,336	47,602	-12.0	-25.8
Jackson County	10,005	10,677	13,101	- 6.3	-18.5
Knox County	23,689	25,258	30,409	- 6.2	-16.9
Laurel County	27,386	24,901	25,797	+10.0	- 3.5
Leslie County	11,623	10,941	15,537	+ 6.2	-29.6
Owsley County	5,023	5,369	7,324	- 6.4	-26.7
Perry County	25,714	34,961	46,566	-26.4	-24.9

GENERAL EMPLOYMENT CHARACTERISTICS, 1969 <sup>2/</sup>

Major Employment Group	Employment	
	Clay County	Labor Market Area
TOTAL	3,100	31,000
Agricultural	600	3,700
Nonagricultural	2,500	27,300
Manufacturing	100	3,962
Trade and Services	548	8,600
Government	800	7,200
Mining and Quarrying	642	2,605

MANUFACTURING EMPLOYMENT TRENDS BY INDUSTRY  
SEPTEMBER 1970 AND 1960 <sup>3/</sup>

Industry	Clay County			Labor Market Area		
	1970	1960	%Change	1970	1960	%Change
TOTAL	116	254	-54.3	3,681	2,340	+ 57.3
Food & Kindred Products	0	0	-	641	459	+ 39.7
Apparel, Textiles, Leather	0	0	-	1,197	249	+380.7
Lumber & Furniture	56	250	-77.6	910	1,395	- 34.8
Printing, Publishing, Paper	4	4	-	89	50	+ 78.0
Chemicals, Petroleum, Coal, Rubber	0	0	-	97	77	+ 26.0
Stone, Clay & Glass	0	0	-	47	39	+ 20.5
Machinery & Metal Products	0	0	-	641	64	+901.6
Other	56	0	-	59	7	+742.9



MANCHESTER MANUFACTURING FIRMS,  
THEIR PRODUCTS AND EMPLOYMENT <sup>4/</sup>

Firm	Product	Employment		
		Total	Male	Female
Boone Boy Industries, Inc.	Upholstered furniture	23	11	12
Caudill Construction Co.	Ready mixed concrete	6	5	1
Clay County Furniture Co.	Living room furniture	14	7	7
Etowah Mfg. Co. of Ky.	Metal furniture, rotor sub-assembly & detent	50	12	38
Hale Lumber Co.	Barrel staves	12	12	0
Keith Lumber Co.	Rough lumber	13	13	0
London Ready Mix	Ready mixed concrete	10	10	0
The Manchester Enterprise	Newspaper, job printing	4	2	2

WAGE RATES FOR SELECTED OCCUPATIONS  
MANCHESTER, KENTUCKY <sup>5/</sup>

Classification	Wages Per Hour		
	Starting	Maximum	Prevailing
<u>Production Employees</u>			
Assembler	\$1.60	\$1.85	\$1.65
Inspector	1.60	1.80	1.65
Production Laborer	1.60	1.90	1.65
Welder, Arc or Acetylene (Class-A)	1.60	2.00	1.70
<u>Service Employees</u>			
Electrician (Class-A)	\$2.40	\$4.75	\$4.00
Laborer	1.60	1.80	1.65
Truck Driver, Industrial (Class-A)	1.60	3.00	2.00
<u>Office Employees</u>			
Bookkeeper	\$1.60	\$3.00	\$2.00
File Clerk	1.60	1.75	1.60
Receptionist	1.60	2.00	1.75
Secretary	1.60	2.50	2.00
Typist	1.60	1.80	1.65

LABOR ORGANIZATIONS

There are no unions representing manufacturing workers in Clay County.



CURRENT AND FUTURE LABOR SUPPLY -  
MANCHESTER LABOR MARKET AREA

Area	Current Labor Supply, 1971 <sup>6/</sup>			Future Labor Supply by 1977 <sup>7/</sup> (Becoming 18 Years of Age)		
	Total	Male	Female	Total	Male	Female
Labor Market Area	19,529	8,575	10,954	21,073	10,765	10,308
Clay	2,317	923	1,394	2,748	1,413	1,335
Bell	3,857	1,631	2,226	4,134	2,155	1,979
Jackson	1,666	743	923	1,369	701	668
Knox	2,600	1,111	1,489	3,021	1,455	1,566
Laurel	2,898	1,201	1,697	3,523	1,784	1,739
Leslie	1,577	748	829	1,927	977	950
Owsley	1,318	856	462	703	367	336
Perry	3,296	1,362	1,934	3,648	1,913	1,735

TOTAL PERSONAL INCOME<sup>8/</sup>

Area	1969*	1959	% Change
Clay County	\$ 20,112,000	\$ 12,261,000	+64.0
Labor Market Area	226,447,000	131,990,000	+71.6
Kentucky	9,202,000,000	4,655,000,000	+97.6

PER CAPITA PERSONAL INCOME<sup>9/</sup>

Area	1969*	1959	% Change
Clay County	\$ 960	\$ 596	+61.1
Labor Market Area	\$860 to 1,740	\$527 to 1,100	NA
Kentucky	2,847	1,552	+83.4

\*Preliminary figures.

## EDUCATION

### Public Schools

	<u>Clay County</u>
Total Enrollment	5,664
Elementary	4,333
High School	1,331
Student-Teacher Ratio	23-1
Elementary	23-1
High School	24-1
State Rating of High School	Standard
Percent High School Graduates to College	31.6
Current Expenditures Per Pupil	\$395.06
Bonded Indebtedness	None

### Parochial, Private and Special Schools

	<u>Oneida Baptist Institute</u>	<u>Oneida Seventh Day Adventist</u>
Total Enrollment	183	14
High School	183	-
Student-Teacher Ratio	12-1	7-1
High School	12-1	-

### Vocational Schools

	<u>Nearest Area School</u>
Location	Somerset Area Vocational School
Miles Distant	Somerset
Curriculum	56 Accounting Jr. Management, General Clerical Secretarial-Steno, Distributive Education Health Careers, Electronics (Technology) Aircraft Technician Maintenance Appliance Repair, Auto Mechanics Drafting, Machine Shop Printing

Nearest Extension Center

Location            Clay County Extension Center  
                      Manchester  
Curriculum        Appliance Repair  
                      Auto Body Repair  
                      Auto Mechanics  
                      Drafting  
                      Electricity  
                      Welding

Colleges and Universities

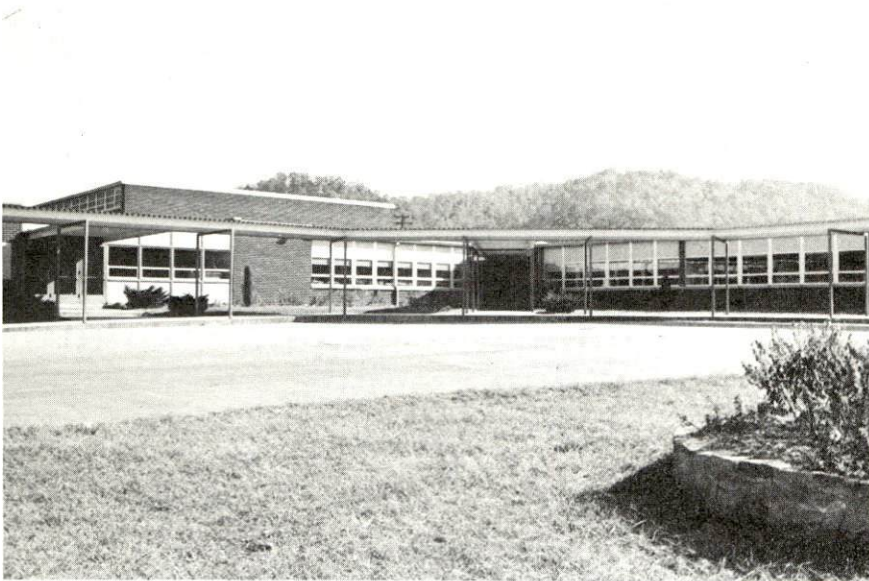
<u>Name</u>	<u>Area - Within 75 Miles</u>		<u>Highest Degree Conferred</u>
	<u>Location</u>	<u>Enrollment</u>	
Sue Bennett Jr. College	London	181	Associate
Union College	Barbourville	875	Masters
Cumberland College	Williamsburg	1,766	Baccalaureate
Lees Junior College	Jackson	423	Associate
Berea College	Berea	1,448	Baccalaureate



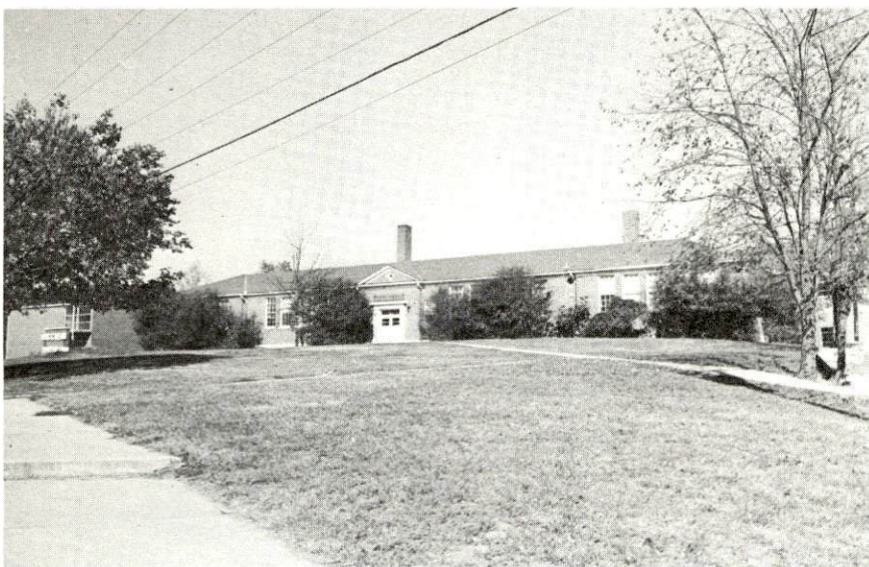
CLAY COUNTY HIGH SCHOOL



HACKER  
ELEMENTARY  
SCHOOL



HORSE CREEK  
ELEMENTARY  
SCHOOL



CLAY COUNTY  
HIGH SCHOOL





CLAY COUNTY  
COURTHOUSE



CLAY COUNTY BOARD  
OF EDUCATION

TRANSPORTATION

Rail

Line serving - Louisville & Nashville Railroad

Services - Freight, REA Express

RAILWAY TRANSIT TIME FROM MANCHESTER, KENTUCKY, TO: 10/

City	No. of Days		City	No. of Days	
	CL			CL	
Atlanta, Ga.	2		Los Angeles, Calif.	6	
Birmingham, Ala.	4		Louisville, Ky.	2	
Chicago, Ill.	4		Nashville, Tenn.	3	
Cincinnati, Ohio	2		New Orleans, La.	4	
Cleveland, Ohio	3		New York, N. Y.	4	
Detroit, Mich.	4		Pittsburgh, Pa.	4	
Knoxville, Tenn.	1		St. Louis, Mo.	4	

Truck Service

Company

Home Office

Detherage Freight Line  
 McDuffee Motor Freight, Inc.  
 (United Trucking)  
 United Parcel Service\*  
 American Courier Corp.

Somerset, Kentucky  
 Detroit, Michigan  
 Louisville, Kentucky  
 New York, New York

HIGHWAY MILES AND TRUCK TRANSIT TIME IN DAYS FROM  
 MANCHESTER, KENTUCKY, TO SELECTED MARKET CENTERS

City	Highway Miles	Delivery Time <sup>11/</sup>		City	Highway Miles	Delivery Time	
		LTL	TL			LTL	TL
Atlanta, Ga.	308	2	2	Los Angeles, Calif.	2,256	5	4
Birmingham, Ala.	274	3	2	Louisville, Ky.	168	1	1
Chicago, Ill.	465	3	2	Nashville, Tenn.	265	2	1
Cincinnati, Ohio	200	1	1	New Orleans, La.	831	4	2
Cleveland, Ohio	438	2	2	New York, N. Y.	828	4	2
Detroit, Mich.	434	2	1	Pittsburgh, Pa.	444	3	2
Knoxville, Tenn.	132	1	1	St. Louis, Mo.	464	2	2

\*Terminal in London.

Air

	<u>Local</u>	<u>Nearest Commercial</u>
	Sky Airport (private)	London-Corbin War Memorial Airport
Location:	Manchester	London, 23 miles
Runways:	1 turf	1 paved
Length:	2,350 feet	6,000 feet
Traffic Control:	Wind sock	Wind sock
Lighting:	None	Beacon, runway and obstruction lights
Services:	80 octane	80 and 100 octane, JP-A-50, Piedmont Airlines, taxi, car rental, Weather Bureau, flight training, charter, ambulance service, vending machines

Taxi 12-hour service daily

Rental Services Car rental



## POWER AND FUEL

### Electricity

Company serving Manchester - Kentucky Utilities Company  
Source of power - Kentucky Utilities Company  
Total generating capacity - 1,215,000 KW  
Industrial rates furnished by - Kentucky Utilities Company, Industrial  
Development Department, Lexington, Kentucky

Company serving Clay County - (1) Jackson County RECC, (2) Kentucky  
Utilities Company  
Source of power - (1) East Kentucky Power Cooperative, (2) Kentucky  
Utilities Company  
Total generating capacity - (1) 548,000 KW, (2) 1,215,000 KW  
Industrial rates furnished by - (1) Jackson County RECC, McKee,  
Kentucky, (2) Kentucky Utilities Company, Industrial Development  
Department, Lexington, Kentucky

### Natural Gas

Company serving - Peoples Gas Company  
Source of supply - The Wiser Oil Company  
Size of transmission lines - 4, 6, and 8 inches  
Distribution lines - 2, 4, 6, and 8 inches  
BTU content - 1,150; Specific gravity - .70  
Distribution pressure - 25 psi

### Industrial Rates (Interruptible Service)

Monthly Rates: Summer Rate (six months, May through October)  
First 1,000 cu. ft. or fraction thereof for \$600.00 (minimum)  
Next 1,000 cu. ft. .59¢ per M cu. ft.  
All over 2,000 cu. ft. .57¢ per M cu. ft.  
Winter Rate (six months, November through April)  
First 1,000 cu. ft. or fraction thereof for \$800.00 (minimum)  
Next 1,000 cu. ft. .75¢ per M cu. ft.  
All over 2,000 cu. ft. .73¢ per M cu. ft.

## WATER AND SEWERAGE

### Water

Company serving - Manchester Water & Sewer Company  
Source - Bert T. Combs Lake  
Treatment plant capacity - 500,000 gpd  
Average daily consumption - 235,000 gallons  
Peak daily consumption - 300,000 gallons  
Type treatment - coagulation, settling, filtration, chlorination, fluoridation  
Storage capacity - 235,000 gallons  
Size mains - 3, 4, 8, and 10 inches  
Average pressure - 70 to 90 psi  
Average temperature - 60 degrees

### MONTHLY WATER RATES FOR WHOLESALE AND INDUSTRIAL CONSUMERS

#### Inside City

First	2,000 gallons	\$1.50 per M gallons
Next	8,000 gallons	.80 per M gallons
Next	10,000 gallons	.70 per M gallons
Next	20,000 gallons	.60 per M gallons
All over	40,000 gallons	.50 per M gallons

#### Outside City

First	2,000 gallons	\$2.25 per M gallons
Next	8,000 gallons	1.20 per M gallons
Next	10,000 gallons	1.05 per M gallons
Next	20,000 gallons	.90 per M gallons
All over	40,000 gallons	.83 per M gallons

Name of water district - Hima-Sibert Water District  
Date when water district began operating - 1970  
Source of supply of treated water - Manchester Water & Sewer Company  
Amount of water which can be purchased in a 24-hour period - 200,000 gallons  
Average amount of water used in a 24-hour period - 17,250 gallons  
Peak amount of water used in a 24-hour period - 18,000 gallons  
Average pressure - 40 to 70 psi  
Size mains - 6, 5, 4, 3, and 2 inches

Rates:

Minimum	2,000 gallons	\$2.25 per M gallons
Next	3,000 gallons	1.50 per M gallons
Next	5,000 gallons	1.25 per M gallons
Next	15,000 gallons	1.15 per M gallons
Next	25,000 gallons	1.10 per M gallons
Next	50,000 gallons	1.00 per M gallons
All over	100,000 gallons	.75 per M gallons

Surface water sources - South Fork Kentucky River

Average discharge - Goose Creek at Manchester 208 cfs (5 years, USGS)

Expected ground water yield - 50 to 200 gpm along southern boundary of county; remainder of county 5 to 50 gpm

Sewerage

Company serving - Manchester Water & Sewer Company

Design capacity - 350,000 gpd

Average daily flow - 160,000 gallons

Treatment - primary and secondary

Type treatment - grit chamber, trickling filters, and chlorination

Treated effluent discharged into - Big Goose Creek

Size of sanitary mains - 8 to 10 inches

Size of storm mains - 30 inches

Rates - 50 percent of monthly water bill



## LOCAL GOVERNMENT

### City

Structure - Mayor - 4-year term; 6 councilmen - 2-year terms  
Budget 1970 - General Fund \$61,700  
Fees and licenses - Business licenses range from \$5 to \$150 annually;  
car stickers \$5 per year

### County

Structure - County Judge - 4-year term; 4 magistrates - 4-year terms  
Budget 1970-71 - General Fund \$59,923; Road Fund \$31,650

### Assessed Value of Property, 1970

<u>Classes of Property*</u>	<u>Manchester</u>	<u>Clay County</u>
Real Estate	\$5,473,100	\$29,516,270
Tangibles	1,707,050	7,956,850
Public Service		7,335,513 (1969)

### Local General Property Tax Rates Per \$100 of Assessed Valuation, 1970 <sup>12/</sup>

<u>Taxing Unit**</u>	<u>Manchester</u>	<u>Clay County</u>
State	\$ .015	\$ .015
County	.179	.179
School	.366	.366
City	.300	
Total	\$ .860	\$ .560

### Planning and Zoning

Agency - Manchester Planning Commission  
Codes adopted - Building, Housing, Plumbing, Electric, Fire, and Gas

\*Property assessed at 100 percent of fair value.

\*\*Manufacturing machinery, raw materials inventories and goods in process inventories are not subject to local tax. State rate is only \$0.15 per \$100.

Safety

Police

Manchester

Clay County

Total staff	4	6
Radio-patrol cars	1	6

Fire

American Insurance Association Fire Rating	7
Full-time staff	2
Volunteers	30
Equipment: 750 gpm pumpers	2

Sanitation

Manchester

Clay County

Type service	municipal	contract
Cost:		
residential	contract	contract
business	contract	contract
Collection frequency:		
residential	twice weekly	when desired
business	twice weekly	when desired
Trash pickup	contract	when desired
Disposal method	land fill	land fill

## HEALTH

### Hospitals

<u>General Hospital</u>	<u>Location</u>	<u>Beds</u>
Manchester Memorial Hospital	Manchester, Kentucky	63

General hospital facilities and services - 1 operating room, 1 recovery room, 1 emergency room, OB section, X-ray, pediatrics, physical therapy, hydrotherapy, laboratory, blood bank, EKG, and extended care section

Medical staff - 5 physicians (two of the five are surgeons), 1 pediatrician, 1 pathologist, 1 radiologist, 11 registered nurses, and 6 licensed practical nurses

### Public Health

Facility - Clay County Health Department

Staff - 8 registered nurses, 5 clerks, 2 sanitarians, 5 home health aides; 1 health officer, 1 clerk, 1 health program coordinator, 1 nursing supervisor, 1 nutritionist, 1 health educator (all part-time)

Budget 1971-72 - \$170,531



## OTHER LOCAL FACILITIES

### Communications

Telephone - Kentucky Telephone Company  
Services - standard

Telegraph - Western Union  
Services - standard

Postal - U. S. Post Office  
Class - Second  
Mail received - once daily  
Mail dispatched - once daily

Newspapers - Manchester Enterprise  
Weekly and circulation - 4,560  
Other papers received from - Lexington and Louisville, Kentucky;  
Knoxville, Tennessee

Radio - WWXL - AM-FM  
Stations received from - Louisville, Lexington, London, Corbin and  
Covington, Kentucky; Cincinnati, Ohio

Television -  
Reception from - Lexington, Kentucky; Knoxville and Johnson City,  
Tennessee; Bristol, Virginia; Asheville, North Carolina  
Kentucky Educational Television - Somerset transmitter - Channel 29

### Library Services

Public libraries - Clay County Public Library  
Size collection - 12,000  
Circulation, 1970 - 97,000  
Services - Bookmobile, records, films, magazines, paintings, story  
hour, basic adult education, arts and craft program, meeting room,  
and Educational TV

### Religious Institutions

Number of churches - 12  
Denominations - Baptist, Christian, Church of God, United Methodist,  
Pentecostal, Presbyterian, Seventh Day Adventist, Mennonite,  
Catholic, Jehovah's Witnesses



MANCHESTER METHODIST CHURCH



MANCHESTER BAPTIST CHURCH



MANCHESTER CHRISTIAN CHURCH



ST. ANN CHURCH

Financial Institutions

<u>Bank</u>	<u>Statement as of June 30, 1971</u>	
	<u>Assets</u>	<u>Deposits</u>
First National Bank	\$6,677,711.09	\$6,009,346.61
First State Bank	4,960,792.57	4,120,711.83

Hotels and Motels

Number - 3  
Units - 69

Clubs and Organizations

Business and Civic - Jaycees, Kiwanis, Ministerial Association,  
Red Cross, Clay County Development Association

Fraternal - American Legion, Masonic Lodge, VFW, Medical Society

Women's - Federated Woman's Club, Younger Women's Club,  
Homemakers

Youth - Little League, Boy Scouts, Brownies, Girl Scouts, 4-H,  
VICA, FFA

Other - Manchester Mental Health and Mental Retardation Association,  
Jackson-Clay Community Action Agency, Fish and Game Club, Fox  
Hunter's Club, Coon and Quail Club, Saddle Club, and Sportsmen's  
Club



## RECREATION

### Local

#### Public Recreation Facilities

Supervised program - during summer months

Park - 1

Playgrounds - 4 (school)

Swimming pool - 1

Tennis courts - 3

Baseball diamonds - 2

Other - drag strip

#### Private Recreation Facilities

Movie theater - 1 (drive-in)

#### Tourist Attractions

Daniel Boone National Forest

### Area (Within 60 miles)

Cumberland Falls State Resort Park

Pine Mountain State Resort Park

Levi Jackson Wilderness Road State Park

Cumberland Gap National Historical Park

AGRICULTURE - NATURAL RESOURCES - CLIMATE

Agriculture 13/

	<u>Clay County</u>	<u>Labor Market Area</u>
Total land area (acres)	303,360	1,889,280
Percent of area in farm land	43.2	32.1
Number of farms	1,325	7,357
Average size of farms (acres)	98.8	82.5
1964 value of all farm products	\$1,960,577	\$11,899,440
Value per farm	1,480	1,617
Total crop sales	1,499,715	7,643,488
Total livestock & livestock products	460,694	4,137,949
1968 agricultural production included:		
Burley tobacco (lbs.)	2,600,000	12,462,000
Corn (bu.)	168,000	838,000
Cattle and calves (number)	7,100	40,700
Hogs and pigs (number)	3,800	14,600
Milk production (1967) (lbs.)	6,045,000	62,410,000

Natural Resources

Principal mineral resources	Coal and petroleum
Other mineral resources	Clay, natural gas, sand and gravel
Acres of commercial forest land	247,200
Most abundant tree species	Red oak, white oak, hickory, yellow poplar, yellow pine, beech and soft maple

Climate 14/

	<u>Clay County</u>
Temperature	
Annual mean (30-year record)	59.6 degrees
Average annual	59.0 degrees
Record highest August 1968 (10-year record)	99.0 degrees
Record lowest January 1966 (10-year record)	- 9.0 degrees
Seasonal heating degree-days (30-year record)	3,494
Precipitation	
Mean annual total (30-year record)	45.85 inches
Mean annual snow and sleet (28-year record)	12.9 inches
Total precipitation 1970	43.43 inches
Mean number days precipitation (.01 inches or more) (28-year record)	126
Average number days thunderstorms (28-year record)	47
Prevailing winds (14-year record)	Northeast

## HISTORY

Clay County is situated in the southeastern part of Kentucky and covers 474 square miles of territory. Red Bird Creek, which forms a portion of its southeastern boundary, flows north to join Goose Creek, creating the South Fork of the Kentucky River. Goose Creek bisects the county and flows in a northeasterly direction. The land surface is hilly to mountainous, and natural resources of coal and timber are abundant. Almost three-quarters of its area is forested with the greater part of it included in Daniel Boone National Forest.

The first settler in Clay County was James Collins, who built a cabin near the mouth of Collins Creek in 1798 and extracted salt from a salt spring there. James and Daugherty White of Virginia and several others soon came and opened a salt works on Garrard Creek, where Indians had been producing salt for generations. James White's purchase of this land provided a source of great wealth for the White family. James Garrard, the second Governor of Kentucky, successfully developed salt wells on Buffalo Lick during the heyday of Kentucky salt production.

In 1806, Clay became Kentucky's forty-seventh county, named for General Green Clay, a Virginian who migrated to Kentucky and became a surveyor and large land owner. Clay was a delegate to the Virginia Legislature before Kentucky became a state and helped write Kentucky's second constitution. Since its original formation, Clay County was carved up several times to help form other counties.

A rock formation in the county known as Town Rocks has a number of underground alleys which were used to hide valuables, livestock and slaves during the Civil War. Burning Springs is the site of a natural flow of gas that burned with a steady flame for many years after its discovery in 1798.

Manchester, the county seat, became the county's leading trade center early in its history. It was named for the great manufacturing city of Manchester, England. In 1970 it had a population of 1,664.

Clay County had a population of 2,398 in 1810, which by 1950 had grown to 23,116. There was a subsequent decline, however, to 20,748 in 1960 and 18,481 in 1970.



Agricultural employment accounted for 600 of the county's 3,100 employed in 1969. Principal products were tobacco, corn, cattle and hogs. Manufacturing employment stood at 100 in 1969, with lumber and furniture the major items produced. Etowah Manufacturing Company, which makes safety devices for artillery shells, and Boone Boy Industries, which produces upholstered furniture, are the county's largest firms.

The Daniel Boone Parkway, which connects with Interstate 75, 23 miles from Manchester, will improve transportation in the county greatly.

Many of Clay County's distinguished citizens have been members of the Garrard and White families. James Garrard was the only Kentucky Governor elected to two successive terms. Bert T. Combs, Governor of Kentucky from 1959 to 1963 and then United States District Court Judge, was born in Clay County.

## SOURCES OF INFORMATION

- 1/ U.S. Department of Commerce, Bureau of the Census, Census of Population, 1950, 1960, 1970.
- 2/ Kentucky Department of Economic Security, Division of Research and Statistics.
- 3/ Kentucky Department of Economic Security, Number of Workers in Manufacturing Industries Covered by Kentucky Unemployment Insurance Law Classified by Industry and County, September 1960, September 1970.
- 4/ Kentucky Department of Commerce, Division of Research and Planning, City of Manchester.
- 5/ Kentucky Department of Economic Security, Division of Employment Services, Corbin Office.
- 6/ Kentucky Department of Economic Security, Kentucky Labor Supply Estimates by County, January 1971.
- 7/ Kentucky Department of Commerce, Future Labor Supply by 1977.
- 8/ University of Kentucky, Office of Development Services and Business Research, Total Personal Income for Kentucky.
- 9/ University of Kentucky, Office of Development Services and Business Research, Per Capita Income in Kentucky.
- 10/ Louisville & Nashville Railroad, Louisville, Kentucky.
- 11/ United Trucking Service, Detroit, Michigan.
- 12/ Kentucky Department of Revenue, Kentucky Property Tax Rates, 1970.
- 13/ U.S. Department of Commerce, Bureau of the Census, Census of Agriculture, 1964. U.S. Department of Agriculture and Kentucky Department of Agriculture, Kentucky Agricultural Statistics, 1969.
- 14/ U.S. Department of Commerce, Environmental Science Services Administration, Climatological Data, 1970.

All other information was obtained from governmental offices, local businesses and organizations.