

1973

## Industrial Resources: Clinton County - Albany

Kentucky Library Research Collections  
Western Kentucky University, [spcol@wku.edu](mailto:spcol@wku.edu)

Follow this and additional works at: [https://digitalcommons.wku.edu/clinton\\_cty](https://digitalcommons.wku.edu/clinton_cty)

 Part of the [Business Administration, Management, and Operations Commons](#), [Growth and Development Commons](#), and the [Infrastructure Commons](#)

---

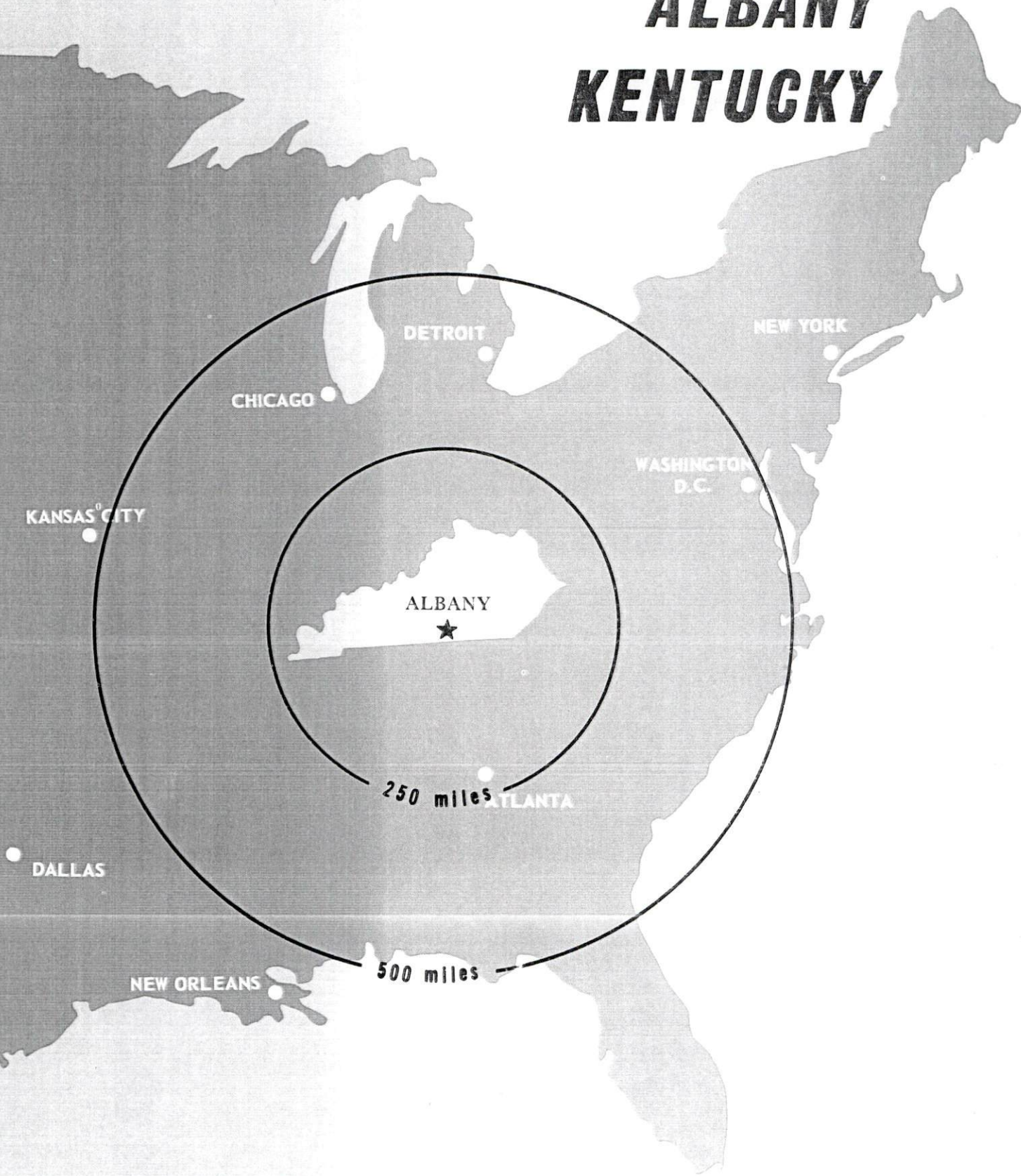
### Recommended Citation

Kentucky Library Research Collections, "Industrial Resources: Clinton County - Albany" (1973). *Clinton County*. Paper 9.  
[https://digitalcommons.wku.edu/clinton\\_cty/9](https://digitalcommons.wku.edu/clinton_cty/9)

This Report is brought to you for free and open access by TopSCHOLAR®. It has been accepted for inclusion in Clinton County by an authorized administrator of TopSCHOLAR®. For more information, please contact [topscholar@wku.edu](mailto:topscholar@wku.edu).

# INDUSTRIAL RESOURCES

## **ALBANY KENTUCKY**



CLINTON COUNTY, KENTUCKY

CURRENT INDUSTRIAL RESOURCES, ALBANY, KENTUCKY

This is a 1974 supplement to "Industrial Resources, Albany, Kentucky" which was published in 1973.

Population

	<u>1972</u> (Provisional)	<u>1970</u>	<u>1960</u>
Albany	N. A.	1,891	1,887
Clinton County	8,400	8,174	8,886
Labor Market Area	40,700	39,834	42,497

(Includes Clinton, Cumberland, Russell and Wayne Counties.)

General Employment Characteristics

<u>Industry</u>	<u>Employment 1972</u>	
	<u>Clinton County</u>	<u>Labor Market Area</u>
TOTAL	3,430	14,600
Agricultural	710	3,490
Nonagricultural	2,720	11,110
Manufacturing	940	3,134
Government	440	1,860
Trades and Services	443	1,842

Manufacturing Employment

<u>Type Industry</u>	<u>Clinton County</u>			<u>Labor Market Area</u>		
	<u>March</u>	<u>March</u>	<u>%Change</u>	<u>March</u>	<u>March</u>	<u>%Change</u>
	<u>1973</u>	<u>1963</u>		<u>1973</u>	<u>1963</u>	
TOTAL	1,046	257	307.0	3,264	1,421	129.7
Food & Kindred Products	24	17	41.2	81	91	-11.0
Apparel, Textiles, Leather	949	236	302.1	2,528	952	165.5
Lumber, Furniture	68	4	1,600.0	594	368	61.4
Printing & Publishing,						
Paper	3	0	--	17	0	--
Chemicals, Petroleum &						
Coal, Rubber	0	0	0	0	6	-100.0
Stone, Clay & Glass	0	0	0	4	4	--
Machinery & Metal						
Products, Equipment	2	0	--	40	0	--



There are presently 10 manufacturing firms in Albany. Major firms, employment, and year started operations:

<u>Firm</u>	<u>Employment</u>	<u>Year started operations</u>
Clinton Manufacturing Company	251	1955
Sutton Shirt Corporation	565	1964

Labor Supply

	<u>Clinton County</u>			<u>Labor Market Area</u>		
	<u>Total</u>	<u>Male</u>	<u>Female</u>	<u>Total</u>	<u>Male</u>	<u>Female</u>
Current (1973)	710	450	260	5,120	2,580	2,540
Potential additions next five years	795	436	359	3,996	2,074	1,922

Personal Income

Clinton County, 1971: Per Capita - \$2,087  
 1961: Per Capita - \$ 800

Local Government

Property Tax Rates

Property tax rates per \$100 of assessed valuation, 1973.

	<u>Albany</u>	<u>Clinton County</u>
State	\$ .015	\$ .015
County	.152	.152
School	.371	.371
City	.213	
Total	\$ .751	\$ .538

ALBANY INDUSTRIAL SITES

1973

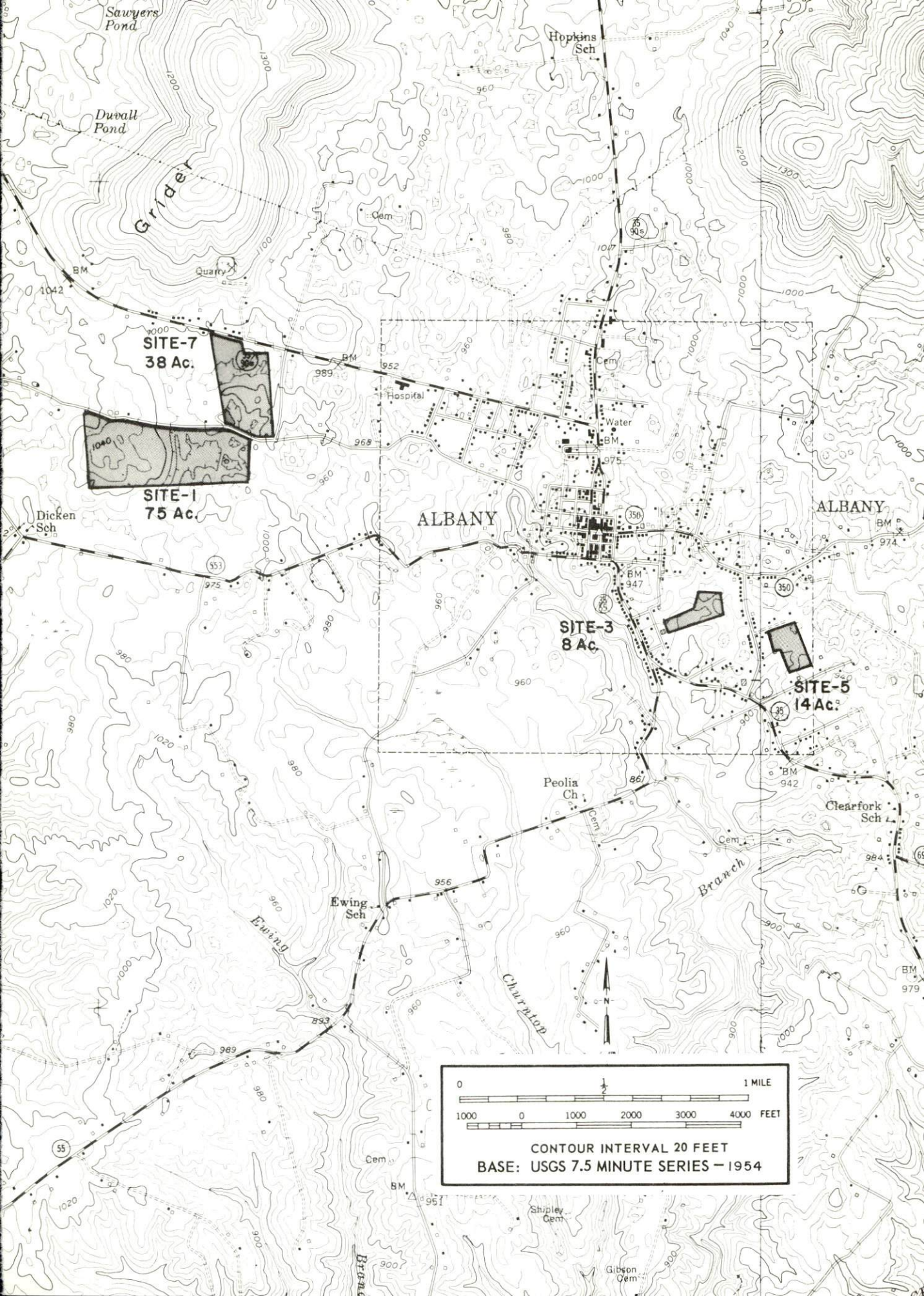
ALBANY INDUSTRIAL SITES

1973

For more information about the following sites, contact Clinton County Jaycees, Albany, Kentucky; or the Kentucky Department of Commerce, Capital Plaza Office Tower, Frankfort, Kentucky.

- SITE #1: ACREAGE: 75  
LOCATION: Approximately 2,400 feet west of Albany city limits  
HIGHWAY ACCESS: Paved road leading to Kentucky's 55 & 90  
RAILROADS: Not rail served  
WATER: Albany Water Works  
SIZE LINE: 6-inch line approximately 3,000 feet to the northeast at west city limits of Albany  
GAS: Natural gas not available  
ELECTRICITY: South Kentucky RECC  
SEWERAGE: Albany Sewer System  
SIZE LINE: 10-inch line approximately 3,000 feet northeast of site at west city limits of Albany  
OWNERSHIP: Private
- SITE #3: ACREAGE: 8  
LOCATION: Within Albany city limits  
HIGHWAY ACCESS: Access road of approximately 200 feet needed  
RAILROADS: Not rail served  
WATER: Albany Water Works  
SIZE LINE: 10-inch line approximately 200 feet southwest of site  
GAS: Natural gas not available  
ELECTRICITY: South Kentucky RECC  
SEWERAGE: Albany Sewer System  
SIZE LINE: 10-inch line approximately 400 feet southeast of site  
OWNERSHIP: Clinton County
- SITE #5: ACREAGE: 14  
LOCATION: Within city limits  
HIGHWAY ACCESS: Paved road leading to U. S. 127  
RAILROADS: Not rail served  
WATER: Albany Water Works  
SIZE LINE: 6-inch line approximately 50 feet from north boundary of site across paved road  
GAS: Natural gas not available  
ELECTRICITY: South Kentucky RECC  
SEWERAGE: Albany Sewer System  
SIZE LINE: 10-inch line approximately 300 feet west of site across paved road  
OWNERSHIP: Private
- SITE #7: ACREAGE: 38  
LOCATION: Approximately 2,400 feet west of Albany city limits  
HIGHWAY ACCESS: Kentucky's 55 & 90 extend along north-western corner of site  
RAILROADS: Not rail served  
WATER: Albany Water Works  
SIZE LINE: 6-inch line approximately 3,000 feet northeast of site at west city limits of Albany  
GAS: Natural gas not available  
ELECTRICITY: South Kentucky RECC  
SEWERAGE: Albany Sewer System  
SIZE LINE: 10-inch line approximately 3,000 feet east of site at west boundary of Albany city limits  
OWNERSHIP: Private





**SITE-7**  
38 Ac.

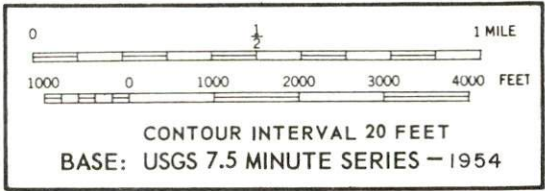
**SITE-1**  
75 Ac.

**SITE-3**  
8 Ac.

**SITE-5**  
14 Ac.

ALBANY

ALBANY



INDUSTRIAL RESOURCES

ALBANY, KENTUCKY

Prepared by

The Kentucky Department of Commerce

in cooperation with

The Clinton County Jaycees

1973



This copy has been prepared by the Kentucky Department of Commerce,  
Division of Research and Planning, and the cost of printing paid from  
state funds.

## TABLE OF CONTENTS

<u>Chapter</u>	<u>Page</u>
INDUSTRIAL SITES . . . . .	i
ALBANY, KENTUCKY - A RESOURCE PROFILE. . . . .	1
THE LABOR MARKET. . . . .	4
Population Trends. . . . .	4
General Employment Characteristics - 1971 . . . . .	4
Manufacturing Employment Trends by Industry. . . . .	4
Albany Manufacturing Firms, Their Products and Employment. . . . .	5
Wages . . . . .	5
Labor Organizations. . . . .	5
Current and Future Labor Supply . . . . .	5
Total Personal Income. . . . .	6
Per Capita Personal Income . . . . .	6
EDUCATION . . . . .	7
Public Schools . . . . .	7
Vocational Schools. . . . .	7
Colleges and Universities . . . . .	8
TRANSPORTATION . . . . .	9
Rail . . . . .	9
Truck Service. . . . .	9
Air . . . . .	10
Bus . . . . .	10
Taxi. . . . .	10
Rental Services . . . . .	10
POWER AND FUEL . . . . .	11
Electricity . . . . .	11
Natural Gas. . . . .	11
Other Fuels. . . . .	11
WATER AND SEWERAGE . . . . .	12
Water . . . . .	12
Sewerage. . . . .	12

<u>Chapter</u>	<u>Page</u>
LOCAL GOVERNMENT . . . . .	13
City. . . . .	13
County. . . . .	13
Assessed Value of Property - 1971. . . . .	13
Local General Property Tax Rates Per \$100 of Assessed Valuation - 1972. . . . .	13
Safety. . . . .	13
Police . . . . .	13
Fire. . . . .	14
Rescue Service . . . . .	14
Sanitation . . . . .	14
HEALTH . . . . .	15
Hospitals . . . . .	15
Nursing Homes. . . . .	15
Public Health . . . . .	15
OTHER LOCAL FACILITIES. . . . .	16
Communications. . . . .	16
Library Services . . . . .	16
Religious Institutions . . . . .	16
Financial Institutions . . . . .	17
Hotels and Motels. . . . .	17
Clubs and Organizations. . . . .	17
RECREATION . . . . .	18
Local . . . . .	18
Area . . . . .	18
AGRICULTURE - NATURAL RESOURCES - CLIMATE . . . . .	19
Agriculture . . . . .	19
Natural Resources . . . . .	19
Climate . . . . .	19
HISTORY . . . . .	20



# GENERAL HIGHWAY MAP CLINTON COUNTY KENTUCKY

PREPARED BY THE  
KENTUCKY DEPARTMENT OF HIGHWAYS  
DIVISION OF PLANNING

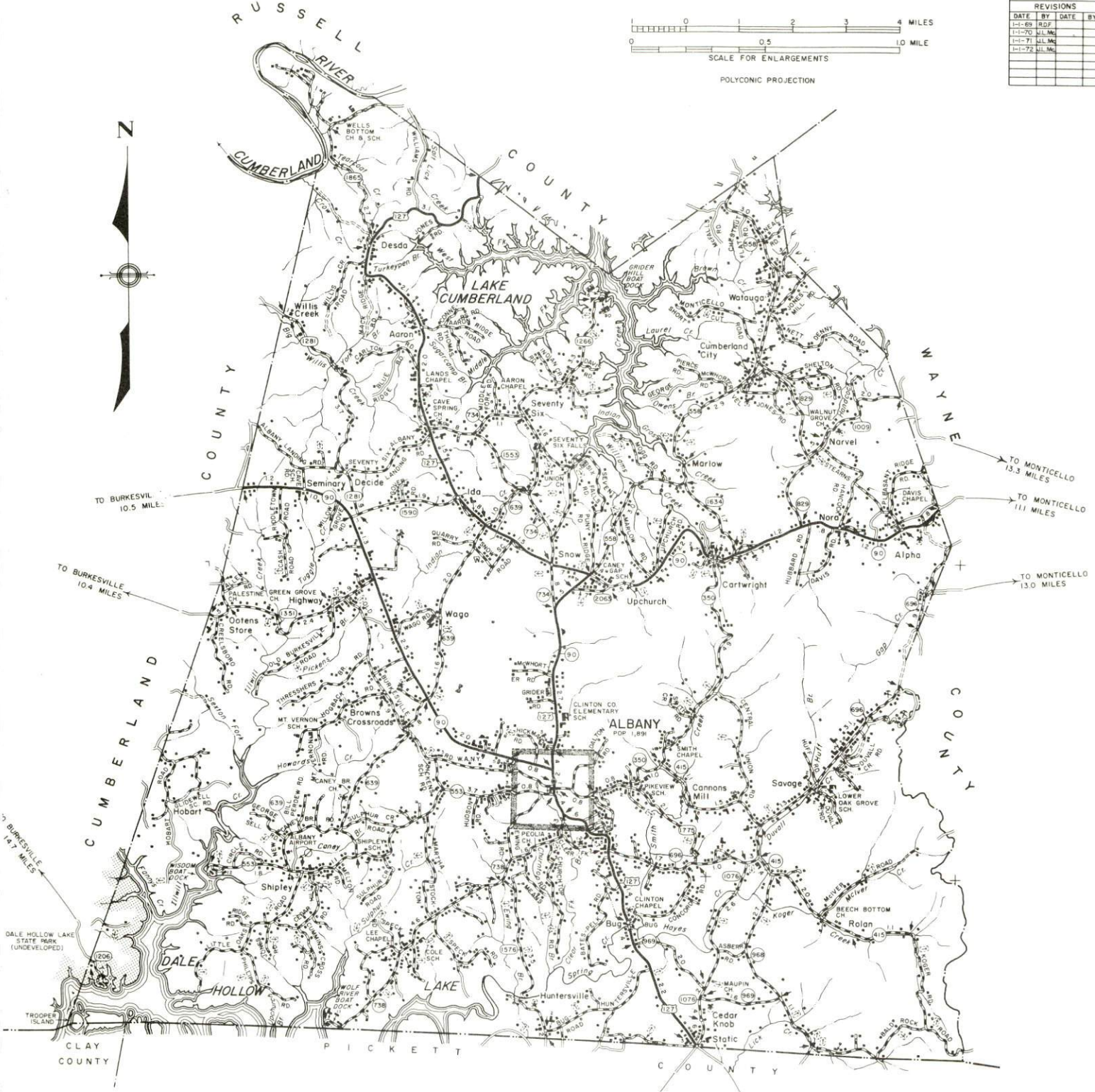
IN COOPERATION WITH THE  
U.S. DEPARTMENT OF TRANSPORTATION  
FEDERAL HIGHWAY ADMINISTRATION



ORIGINAL DATA 1968			
REVISIONS			
DATE	BY	DATE	BY
1-1-69	RDF		
1-1-70	JLM		
1-1-71	JLM		
1-1-72	JLM		



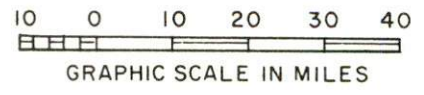
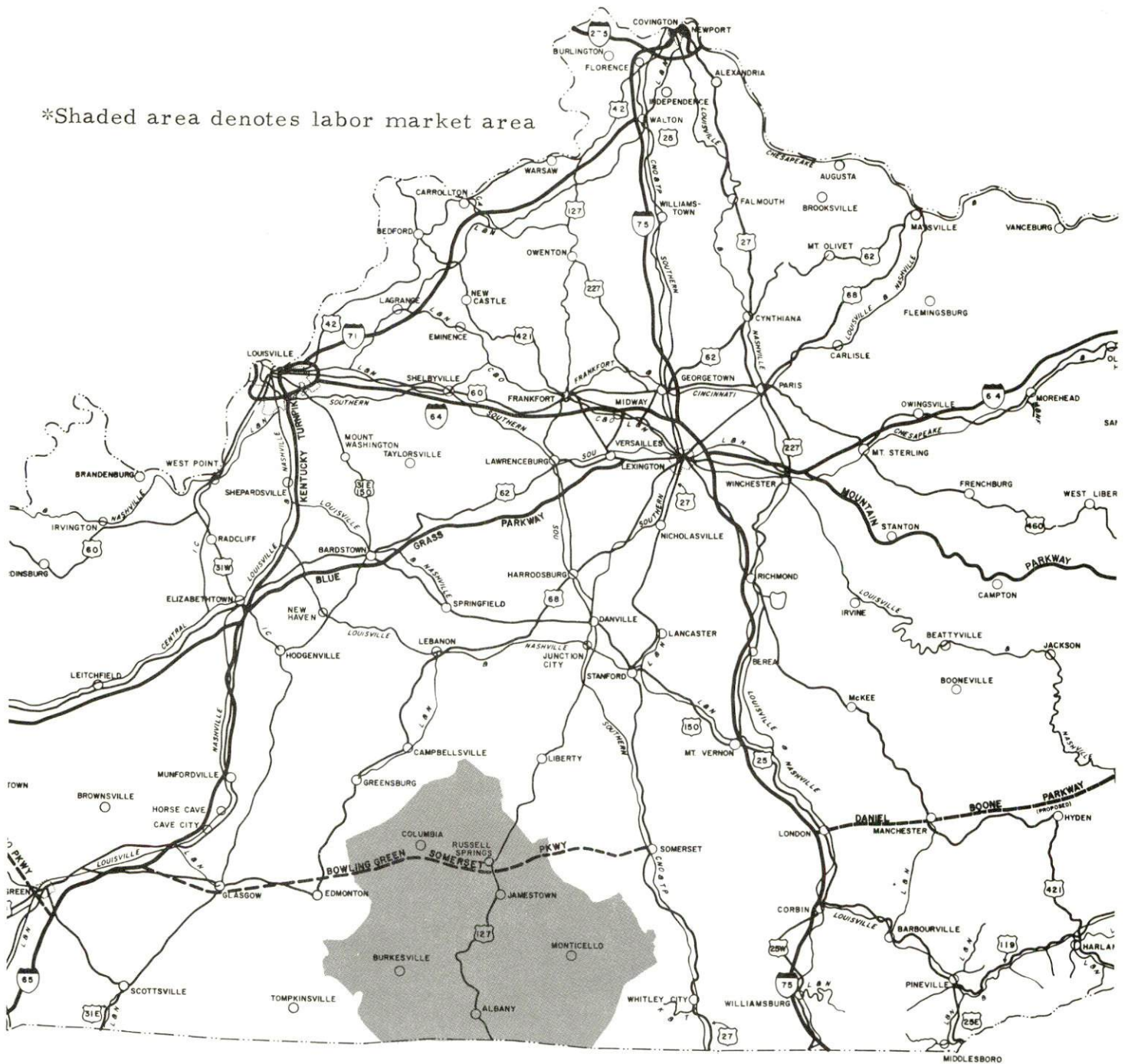
POLYCONIC PROJECTION





# ALBANY LABOR MARKET AREA

\*Shaded area denotes labor market area



## ALBANY, KENTUCKY - A RESOURCE PROFILE

Albany, located in Clinton County in southcentral Kentucky, serves as the county seat and is the largest city in the county. Albany had a population of 1,891 in 1970. The city is situated 67 miles from Knoxville, Tennessee; 124 miles from Nashville, Tennessee; 154 miles from Louisville, Kentucky; and 225 miles from Cincinnati, Ohio.

Clinton County lies in the southeastern corner of Kentucky's Mississippian Plateau Region and covers a land area of 190 square miles. The Kentucky-Tennessee state line forms the southern boundary of the county. In 1970, Clinton County had a population of 8,174.

### The Economic Framework

In 1971, total employment in Clinton County averaged 2,940 with 740 of these jobs provided by agriculture. Government provided 420 jobs, trade and services 350, and manufacturing 740. Since 1961, manufacturing employment has increased approximately 281 percent. Men's and boys' dress shirts are the major industrial products in the county.

Clinton County's per capita income in 1970 was \$1,956, an increase of 181.4 percent since 1960.

In the Albany labor market area, which includes Clinton and its three surrounding Kentucky counties, employment in 1971 averaged 12,580. Agriculture provided 3,640 jobs, trade and services 1,485, government 1,760, and manufacturing 2,480. Area manufacturing employment has increased approximately 106 percent since 1961 with the largest gain in the apparel industry.

Despite important industrial gains in recent years the area still has a deficit of 1,146 manufacturing jobs when measured against the national industrial employment-population ratio. This indicates an area where the potential for additional manufacturing production is good.

### Resources for Growth

1. Labor supply - Currently there is an estimated labor supply of 5,360 men and 3,940 women available for industrial jobs in the labor market area. In addition, 2,115 young men and 1,985 women will become 18 years of age by 1978 and potentially available for work. Also, the current labor supply would be increased by the number of men and women in the two adjoining Tennessee counties who are available for employment.



2. Transportation - U. S. 127, an AAA Highway, runs north-south through Clinton County passing through Albany. The Cumberland Parkway, now under construction, will be only 35 miles north of Albany when completed and will provide quick access to I-65. The Albany Airport, 6 miles west of Albany, can accommodate light aircraft. The nearest commercial air service is at London and Bowling Green, both approximately 87 miles from Albany. The nearest rail service, provided by the Southern Railway System, is at Somerset, 52 miles from Albany.

3. South Kentucky RECC provides electric power to Albany and Clinton County. Natural gas is not available in Albany. However, an adequate supply of propane and distillate fuel oil is available in the area.

4. Industrial sites - Albany has four sites available for industrial use.

5. Education - One university, one senior college, a junior college, and a community college are located within 85 miles of the county. The Somerset State Vocational School is located in Somerset, 52 miles from Albany. Clinton County Area Vocational Education Center is located in Albany and offers training in six different courses.

#### Community Programs for Improvement

Albany's community improvements include the following:

1. A building has been purchased to be used as a police station.
2. The county courthouse has been renovated and its lawn has been landscaped.
3. Plans have been made to develop a city park.
4. Plans have been made to obtain a loan for water and sewerage improvement, which will include a new sewage disposal plant and water filtration plant.
5. Approval of a charter has been obtained for a new full service bank.

#### Recreation, Entertainment and Livability

Albany is within 60 miles of several of Kentucky's outstanding state parks and recreation areas. Lake Cumberland State Resort Park is a resort-type park on Lake Cumberland encompassing 3,000 acres. Facilities include the following: lodge, dining room, housekeeping cottages, campsites, picnic areas, playground, supervised recreation, hiking trails, lodge swimming pool, community swimming pool, fishing, boat rentals, horseback riding, golf, tennis, gift shop and rental houseboats. Lake Cumberland, which averages 90 feet in depth, offers spectacular scenery and water sports.

General Burnside State Park is a 400-acre park located on Chandler Island in Lake Cumberland. Park facilities include campsites, picnic area, playground, supervised recreation, swimming, beach, fishing and golf.

Dale Hollow State Resort Park is now under construction and is located in Clinton and adjoining Cumberland County. This park will be one of the state's largest with the following proposed facilities: swimming, boating, water skiing, horseback riding, hiking, golf, picnic area, campgrounds, and marina. Dale Hollow Reservoir, a 27,700-acre lake, is on the southern border of Kentucky and lies partly in Tennessee. Facilities include cottages, boating, swimming and fishing.

## THE LABOR MARKET

### POPULATION TRENDS <sup>1/</sup>

Area	Population			Percent Change	
	1970	1960	1950	1960-70	1950-60
Albany	1,891	1,887	1,920	+ 0.2	- 1.7
Labor Market Area	39,834	42,497	50,106	- 6.3	-15.2
Clinton County	8,174	8,886	10,605	- 8.0	-16.2
Cumberland County	6,850	7,835	9,309	-12.6	-15.8
Russell County	10,542	11,076	13,717	- 4.8	-19.3
Wayne County	14,268	14,700	16,475	- 2.9	-10.8

### GENERAL EMPLOYMENT CHARACTERISTICS, 1971 <sup>2/</sup>

Major Employment Group	Employment	
	Clinton County	Labor Market Area
TOTAL	2,940	12,580
Agricultural	740	3,640
Nonagricultural	2,200	8,940
Manufacturing	740	2,479
Government	420	1,760
Trade and Services	350	1,486

### MANUFACTURING EMPLOYMENT TRENDS BY INDUSTRY SEPTEMBER 1971 AND 1961 <sup>3/</sup>

Industry	Clinton County			Labor Market Area		
	1971	1961	%Change	1971	1961	%Change
TOTAL	843	221	+281.4	2,836	1,372	+106.7
Food & Kindred Products	33	17	+ 94.1	90	91	- 1.1
Apparel, Textiles, Leather	776	196	+295.9	2,143	874	+145.2
Lumber, Furniture	34	8	+325.0	588	395	+ 48.9
Other	0	0	0	15	12	+ 25.0



ALBANY MANUFACTURING FIRMS,  
THEIR PRODUCTS AND EMPLOYMENT <sup>4/</sup>

<u>Firm</u>	<u>Products</u>	<u>Employment</u>		
		<u>Total</u>	<u>Male</u>	<u>Female</u>
Albany Mills	Flour, cornmeal, feed	3	3	0
Albany Tapes	Stereo tapes	9	6	3
Burnett Timber Products, Inc.	Lumber, charcoal, wood	26	26	0
Clinton Manufacturing Co.	Boys' shirts	251	16	235
Cumberland Charcoal Corp.	Charcoal	15	15	0
Eagle Pass Cheese Co.	Cheddar cheese, dried whey	32	29	3
Ferguson Brothers Feed Mills	Feed	4	4	0
Gibson Printing Co.	Newspaper, job printing	3	2	1
McWhorter Bros. Feed Mills	Feed	3	3	0
Neal Lumber Co.	Lumber, crossties, tobacco sticks	8	8	0
Sutton Shirt Corp.	Men's & boys' dress shirts	475	55	420

WAGES

Wage information will be provided, upon request, by the Kentucky Department of Commerce, Division of Research and Planning.

LABOR ORGANIZATIONS

There are no unions representing manufacturing workers in Albany at this time.

CURRENT AND FUTURE LABOR SUPPLY -  
ALBANY LABOR MARKET AREA

<u>Area</u>	<u>Current Labor Supply, 1972 <sup>5/</sup></u>			<u>Future Labor Supply by 1978 <sup>6/</sup></u> (Becoming 18 Years of Age)		
	<u>Total</u>	<u>Male</u>	<u>Female</u>	<u>Total</u>	<u>Male</u>	<u>Female</u>
Labor Market Area	9,294	5,358	3,936	4,101	2,116	1,985
Clinton	2,074	1,348	726	789	412	377
Cumberland	1,420	905	515	709	387	322
Russell	2,666	1,470	1,196	1,045	524	521
Wayne	3,134	1,635	1,499	1,558	793	765

TOTAL PERSONAL INCOME 7/

<u>Area</u>	<u>1970</u>	<u>1960</u>	<u>% Change</u>
Clinton County	\$ 15,801,000	\$ 6,176,000	+155.8
Labor Market Area	71,216,000	30,145,000	+136.2
Kentucky	9,719,647,000	4,779,695,000	+103.4

PER CAPITA PERSONAL INCOME 8/

<u>Area</u>	<u>1970*</u>	<u>1960</u>	<u>% Change</u>
Clinton County	\$1,956	\$695	+181.4
Labor Market Area Range	\$1,363 to 2,309	\$679 to 816	N.A.
Kentucky	3,019	1,573	+ 91.9

\*Unadjusted for commuting.

## EDUCATION

### Public Schools

	<u>Clinton County</u>
Total Enrollment	1,850
Elementary	1,014
High School	836
Student-Teacher Ratio	26-1
Elementary	26-1
High School	26-1
State Rating of High School	Standard
Percent High School Graduates to College	40.7
Current Expenditures Per Pupil	\$506.66
Bonded Indebtedness, as of June 30, 1972	\$1,101,000

### Vocational Schools

	<u>Nearest State Vocational- Technical School</u>	<u>Nearest Area Education Center</u>
Location	Somerset State Vocational- Technical School Somerset	Clinton County Area Voca- tional Education Center Albany
Miles Distant	52 miles from Albany	
Curriculum	Data Processing Clerical Secretarial Marketing & Distributive Education Health Careers Learning Lab Electronics (Technology) Aircraft Maintenance Technician Appliance Repair Auto Mechanics Drafting Machine Shop Printing	Clerical Secretarial Auto Mechanics Carpentry Electricity Welding



Colleges and Universities

<u>Name</u>	<u>Area - Within 85 Miles</u>		<u>Highest Degree</u>
	<u>Location</u>	<u>Enrollment</u>	<u>Conferred</u>
Campbellsville College	Campbellsville	856	Baccalaureate
Lindsey Wilson Junior College	Columbia	324	Associate
Somerset Community College	Somerset	682	Associate
Western Kentucky University	Bowling Green	11,345	Masters

## TRANSPORTATION

### Rail

Nearest line serving Albany - Southern Railway System at Somerset,  
52 miles distant  
Services - Freight, switching, siding

#### RAILWAY TRANSIT TIME FROM SOMERSET, KENTUCKY, TO: 9/

City	No. of Days		City	No. of Days	
	CL	City		CL	City
Atlanta, Ga.	2		Los Angeles, Calif.	8	
Birmingham, Ala.	2		Louisville, Ky.	2	
Chicago, Ill.	4		Nashville, Tenn.	4	
Cincinnati, Ohio	2		New Orleans, La.	3	
Cleveland, Ohio	4		New York, N. Y.	5	
Detroit, Mich.	4		Pittsburgh, Pa.	4	
Knoxville, Tenn.	2		St. Louis, Mo.	3	

### Truck Service

#### Company

#### Home Office

Eagle Express Co., Inc.	Somerset, Kentucky
Eldridge Truck Line	Somerset, Kentucky
Manning Motor Express, Inc.	Glasgow, Kentucky
Monticello-Albany Freight Lines, Inc.	Monticello, Kentucky

#### HIGHWAY MILES AND TRUCK TRANSIT TIME IN DAYS FROM ALBANY, KENTUCKY, TO SELECTED MARKET CENTERS

City	Delivery			City	Delivery		
	Highway Miles	Time <sup>10/</sup>			Highway Miles	Time	
	Miles	LTL	TL		Miles	LTL	TL
Atlanta, Ga.	261	3	2	Los Angeles, Calif.	2,182	6	4
Birmingham, Ala.	321	3	2	Louisville, Ky.	154	1	1
Chicago, Ill.	453	3	2	Nashville, Tenn.	124	3	2
Cincinnati, Ohio	225	2	1	New Orleans, La.	654	4	3
Cleveland, Ohio	477	3	2	New York, N. Y.	885	5	3
Detroit, Mich.	459	3	2	Pittsburgh, Pa.	500	5	3
Knoxville, Tenn.	67	1	1	St. Louis, Mo.	360	4	3

Air

Nearest Commercial

	Bowling Green-Warren County Municipal	London-Corbin War Memorial Airport
Location:	2 miles southeast of Bowling Green, and 87 miles north- west of Albany	3 miles south-southeast of London, and 87 miles northeast of Albany
Runways:	2 paved	1 paved
Length:	6,500 feet, 4,000 feet	6,000 feet
Traffic		
Control:	Wind tee, Airport Advisory Service from BWG Radio on 123.6	Wind sock
Lighting:	Runways, obstructions, beacons and wind tee until midnight. For runway lights after midnight - call Bowling Green Radio	Beacon, runway and obstruction lights
Services:	80 and 100 octane, jet A-50, storage, minor A & E re- pairs, FAA flight service station, taxi and rental car service, restaurant, Wright Airlines	80 and 100 octane, JP-A-50, Piedmont Airlines, taxi, U-Drive- It, weather, flight training, charter and ambulance service

Local

	Albany Airport
Location:	6 miles west of Albany
Runways:	1 turf
Length:	2,400 feet
Traffic	
Control:	Wind sock
Lighting:	None
Services:	Tie down, 80 octane gasoline if emergency exists

Bus

Cherokee Lines

Taxi

24-hour service, four companies

Rental Services

Car rentals



## POWER AND FUEL

### Electricity

Company serving Albany and Clinton County - South Kentucky RECC

Source of power - East Kentucky Power Cooperative

Total generating capacity - 548,000 KW

Industrial rates furnished by - South Kentucky RECC, Somerset, Kentucky

### Natural Gas

Natural gas is not available in Albany.

### Other Fuels

Propane and butane - Five distributors - Albany Gas & Electric, Haddix Electric, Suburban Propane, Ashland Bottled Gas, Pyrofax Gas Service

Fuel Oils - Distillate fuel oil distributors - Somerset Oil Company, Supertest, Wisdom Oil Company, Standard Oil, Lewis J. Heber Oil Company

Residual fuel oil - arrangements must be made with the refinery.

Low sulphur content coal - Available locally

## WATER AND SEWERAGE

### Water

Company serving Albany - Albany Water Works  
Source - Lake Cumberland  
Treatment plant capacity - 400,000 gallons per day\*  
Average daily consumption - 350,000 gallons  
Peak daily consumption - Has reached capacity  
Type treatment - Alum, chlorine, lime, and fluoride  
Storage capacity - 300,000 gallons  
Size mains - 4, 6, 8, 10, and 12 inches  
Average pressure - 55 psi  
Average temperature - 60 degrees F.

#### MONTHLY WATER RATES FOR WHOLESALE AND INDUSTRIAL CONSUMERS

---

First	3,000 gals.	\$1.00 per M gals.
Next	2,000 gals.	.60 per M gals.
Next	5,000 gals.	.50 per M gals.
Next	10,000 gals.	.40 per M gals.
All over	20,000 gals.	.35 per M gals. plus 30 percent

Surface water sources - Lake Cumberland  
Average discharge - Lake Cumberland near Rowena (neighboring Russell County) 8,566 cfs (31 years, USGS, unadjusted for storage)  
Expected ground water yield - 5 to 50 GPM in central and southern portion of county; 5 GPM or less in northern part and southwestern tip of county

### Sewerage

Company serving Albany - Albany Sewer System  
Design population - 2,000\*  
Treatment - Primary  
Type treatment - Clarifier and drying beds  
Treated effluent discharged into - Town Creek to Dale Hollow Lake  
Size of sanitary mains - 8, 10, and 12 inches  
Size of storm mains - 24 inches  
Rates - 50 percent of monthly water bill

---

\*Plans are underway to obtain a loan for water and sewerage improvements, which will include a new sewage disposal plant and a water treatment plant.

LOCAL GOVERNMENT

City

Structure - Mayor - 4-year term; 6 councilmen - 2-year terms  
 Budget 1971-72 - General Fund \$44,246.36; Water and Sewer Fund \$70,948.79  
 Fees and licenses - Occupational licenses vary from \$20 to \$85 annually.

County

Structure - County Judge - 4-year term; 5 magistrates - 4-year terms  
 Budget 1972-73 - General Fund \$51,368; Road Fund \$35,500

Assessed Value of Property, 1971

<u>Classes of Property*</u>	<u>Albany</u>	<u>Clinton County</u>
Real Estate	\$7,528,035	\$26,056,574 (1972)
Tangibles	2,634,495	7,159,909 (1972)
Public Services		2,077,353

Local General Property Tax Rates Per \$100 of Assessed Valuation, 1972 <sup>11/</sup>

<u>Taxing Unit**</u>	<u>Albany</u>	<u>Clinton County</u>
State	\$ .015	\$ .015
County	.151	.151
School	.370	.370
City	.213	
Total	\$ .749	\$ .536

Safety

<u>Police</u>	<u>Albany</u>	<u>Clinton County</u>
Total staff	4	3
Radio-patrol cars	1	2

\*Property assessed at 100 percent of fair value

\*\*Manufacturing machinery, raw materials inventories and goods in process inventories are not subject to local tax. State rate is only \$.15 per \$100.



Fire

Albany

American Insurance

Association Fire Rating

8

Volunteers

15

Equipment:

750 gpm pumper

1

Rescue Service

Clinton County Rescue Squad

Number of volunteers - 50

Equipment - Dragging equipment, 6 boats and motors, 2 station wagons

Personnel training - First aid, scuba diving training

Sanitation

Albany

Type service

Private

Fee charged:

residential

\$2.00 per month

business

\$5.00 per month

Collection frequency:

residential

Weekly

business

Daily

Disposal method

Landfill

## HEALTH

### Hospitals

<u>General Hospital</u>	<u>Location</u>	<u>Beds</u>
Clinton County War Memorial Hospital	Albany, Kentucky	26
General hospital facilities - Obstetrical room, X-ray, emergency room, delivery room, laboratory, nursery, pharmacy		
Medical staff - 4 doctors, 8 registered nurses, 3 graduate licensed practical nurses, 3 licensed practical nurses		

### Nursing Homes

	<u>Number</u>	<u>Beds</u>
Personal care homes	1	52

### Public Health

Facility - Clinton County Health Center

Staff - 1 registered nurse, 1 health officer (part-time), 3 sanitarians (part-time), 1 clerk, 1 administrator

## OTHER LOCAL FACILITIES

### Communications

Telephone - General Telephone Company  
Services - Standard

Postal - U. S. Post Office  
Class - Second  
Mail received - Once daily  
Mail dispatched - Once daily

Newspaper - The Clinton County News  
Weekly and circulation - Approximately 2,750  
Other papers received from - Louisville, Somerset, and Lexington,  
Kentucky; Knoxville and Nashville, Tennessee

Radio - WANY  
Stations received from - Jamestown, Monticello, Lexington, Louisville,  
and Somerset, Kentucky; Knoxville, Nashville, Livingston and James-  
town, Tennessee

Television  
Cable service  
Reception from - Bowling Green, Lexington and Louisville, Kentucky;  
Nashville and Knoxville, Tennessee  
Kentucky Educational Television - Somerset transmitter, Channel 29

### Library Services

Public library - Clinton County Public Library  
Size collection - 18,578 volumes  
Circulation, 1971 - 131,658  
Services - Bookmobile, records, films, magazines, art reproductions,  
story hour, reading hour and pre-school reading hour

### Religious Institutions

Number of churches - 12  
Denominations - Baptist, Methodist, Church of Christ, Nazarene, Christian,  
Pentecostal, Catholic, Holiness  
Nearest Synagogues - Knoxville, 67 miles distant  
Congregations - Hecca Amuna Congregation (orthodox) and Temple  
Bethel (reform)



Financial Institutions

<u>Bank</u>	<u>Statement as of June 30, 1972</u>	
	<u>Assets</u>	<u>Deposits</u>
Citizens Bank of Albany	\$10,865,091	\$10,014,849

Hotels and Motels

Total number - 4  
Units - 50

Clubs and Organizations

Business and Civic - Jaycees, Lions, Clinton County Fish and Game Protection Association, Clinton County Riding Club, Optimists

Fraternal - Masonic Lodge, VFW, American Legion

Women's - Woman's Club, Younger Women's Club, Eastern Star, Sewing Circle, Homemakers, Jaycettes

Youth - Cub Scouts, Girl Scouts, Boy Scouts, FFA, FHA, Beta Club, Pep Club, Science Club

## RECREATION

### Local

#### Public Recreation Facilities

Park - 1

Baseball diamonds - 2

#### Private Recreation Facilities

Country club - 1 (fee charged to non-members)

Golf course - 1 (fee charged to non-members)

Swimming pool - 1

Movie theater - 1 drive-in

### Area (Within 60 miles)

Lake Cumberland

Lake Cumberland State Resort Park

General Burnside State Park

Dale Hollow State Resort Park (under construction)

Dale Hollow Reservoir

AGRICULTURE - NATURAL RESOURCES - CLIMATE

Agriculture 12/

	<u>Clinton County</u>	<u>Labor Market Area</u>
Total land area (acres)	121,600	753,920
Percent of area in farm land	80.8	69.8
Number of farms	1,107	5,193
Average size of farms (acres)	88.7	101.3
1964 value of all farm products	\$ 2,340,440	\$14,234,809
Value per farm	3,296	2,741
Total crop sales	1,206,749	7,040,538
Total livestock & livestock products	1,133,691	7,167,717
1969 agricultural production included:		
Burley tobacco (lbs.)	2,001,000	9,912,000
Corn (bu.)	224,000	1,429,000
Cattle and calves (number)	21,200	85,800
Hogs and pigs (number)	6,400	35,900
Milk production, 1968 (lbs.)	14,500,000	75,240,000

Natural Resources

Principal mineral resources	Petroleum, limestone and coal
Other mineral resources	Potential of vein minerals
Acres of commercial forest land	63,900
Most abundant tree species	White oak, red oak, hickory, yellow poplar, beech, ash, hard maple

Climate 13/

	<u>Clinton County</u>
Temperature	
Annual mean (30-year record)	59.6 degrees
Average annual 1971	59.2 degrees
Record highest, August, 1968 (11-year record)	99.0 degrees
Record lowest, January, 1966 (11-year record)	- 9.0 degrees
Seasonal heating degree days (30-year record)	3,494
Precipitation	
Mean annual total (30-year record)	45.85 inches
Mean annual snow and sleet (29-year record)	13.10 inches
Total precipitation 1971	50.44 inches
Mean number days precipitation, (.01 inch or more) (29-year record)	127
Average number days thunderstorms (29-year record)	48
Prevailing winds (14-year record)	Southeast

HISTORY

Clinton County is located in the Mississippian Plateau Region of south central Kentucky. Its territory was taken from Cumberland and Wayne Counties and it was the eighty-fifth county formed in the state. Its 190 square miles are hilly and broken, especially in the central eastern part.

Clinton County was named for DeWitt Clinton, a native of New York, and Albany, the county seat, was named for the capital of New York State. It was incorporated in 1838, and had a population of 1,887 in 1866. Settlements nearby at Paoli and in Stockton Valley were made as early as 1790 by families chiefly from East Tennessee.

The population of Clinton County was 4,889 in 1850. Population increased to 7,212 in 1880 but dropped in 1890 to 7,047. Between 1900 and 1950, population increased to 10,605. After 1950, however, population decreased to its present mark of 8,174 in 1970.

In 1972, Albany had 11 manufacturing plants. Sutton Shirt Corporation which makes men's and boys' dress shirts, and Clinton Manufacturing Company, which makes boys' shirts, are the largest firms in Albany.

Clinton County has produced more than its share of prominent citizens who contributed to the development of Kentucky and the nation. Thomas E. Bramlette served in the State Legislature, was Commonwealth attorney, and Judge of the Sixth Judicial District before coming to the governorship of Kentucky in 1863. Preston H. Leslie also served in the State Legislature before becoming governor in 1871. James Semple was charge d'affaires to New Grenada, and later was United States Senator from Illinois. Robert Semple became President of the California Constitutional Convention in 1850 when that state was admitted into the Union.



## SOURCES OF INFORMATION

- 1/ U. S. Department of Commerce, Bureau of the Census, Census of Population, 1950, 1960, 1970.
- 2/ Kentucky Department of Economic Security, Division of Research and Statistics.
- 3/ Kentucky Department of Economic Security, Number of Workers in Manufacturing Industries Covered by Kentucky Unemployment Insurance Law Classified by Industry and County, September 1971, 1961.
- 4/ Kentucky Department of Commerce, Division of Research and Planning.
- 5/ Kentucky Department of Economic Security, Kentucky Labor Supply Estimates by County, January 1972.
- 6/ Kentucky Department of Commerce, Future Labor Supply by 1978.
- 7/ University of Kentucky, Office of Development Services and Business Research, Total Personal Income for Kentucky.
- 8/ University of Kentucky, Office of Development Services and Business Research, Per Capita Income in Kentucky.
- 9/ Southern Railway System, Louisville, Kentucky.
- 10/ Eagle Express Company, Inc., Somerset, Kentucky:
- 11/ Kentucky Department of Revenue, Kentucky Property Tax Rates, 1972.
- 12/ U. S. Department of Commerce, Bureau of the Census, Census of Agriculture, 1964. U. S. Department of Agriculture and Kentucky Department of Agriculture, Kentucky Agricultural Statistics, 1970.
- 13/ U. S. Department of Commerce, Environmental Science Services Administration, Climatological Data, 1971.

All other information was obtained from governmental offices, local businesses and organizations.