

1972

Industrial Resources - Green County - Greensburg

Kentucky Library Research Collections
Western Kentucky University, spcol@wku.edu

Follow this and additional works at: https://digitalcommons.wku.edu/green_cty

 Part of the [Business Administration, Management, and Operations Commons](#), [Growth and Development Commons](#), and the [Infrastructure Commons](#)

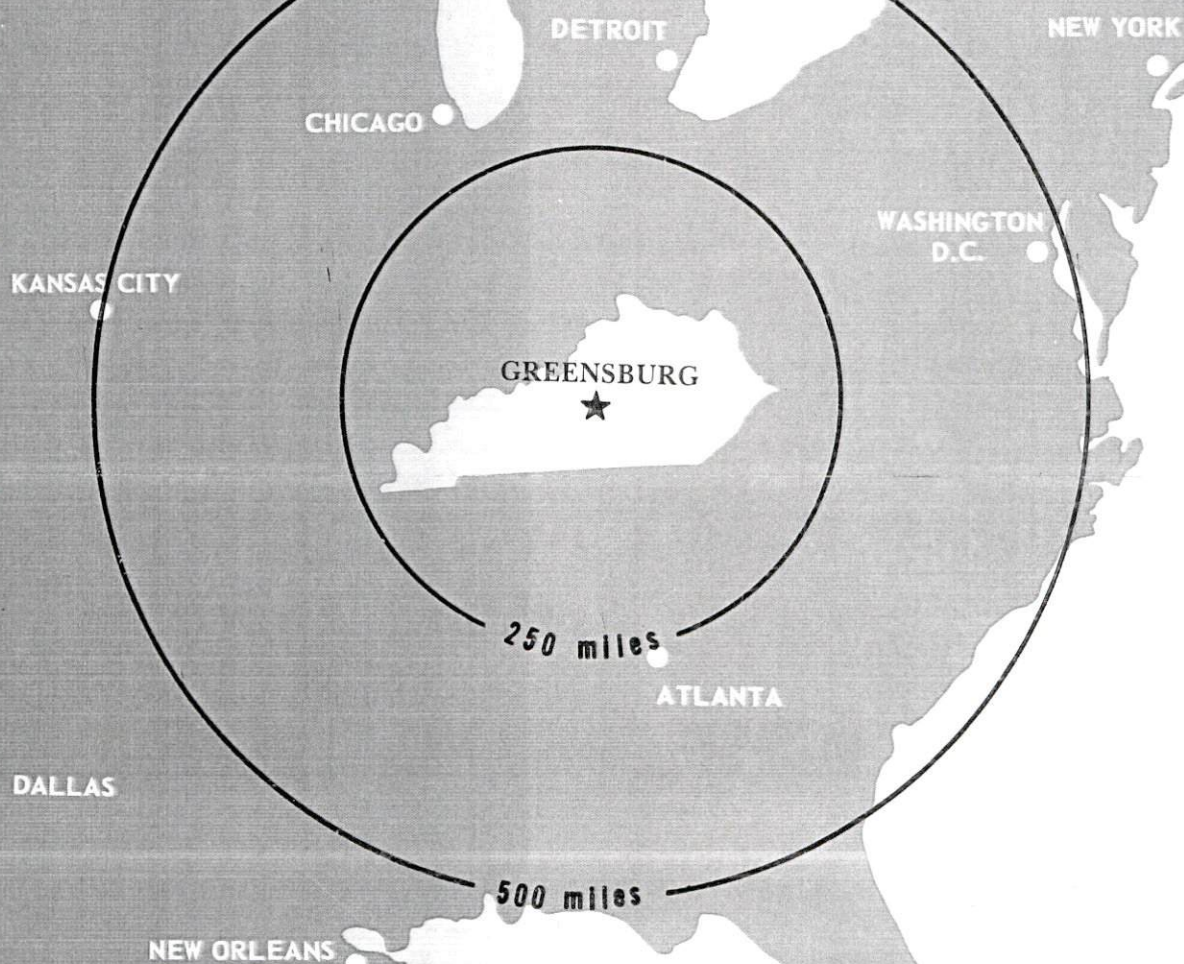
Recommended Citation

Kentucky Library Research Collections, "Industrial Resources - Green County - Greensburg" (1972). *Green County*. Paper 11.
https://digitalcommons.wku.edu/green_cty/11

This Report is brought to you for free and open access by TopSCHOLAR®. It has been accepted for inclusion in Green County by an authorized administrator of TopSCHOLAR®. For more information, please contact topscholar@wku.edu.

INDUSTRIAL RESOURCES

GREENSBURG KENTUCKY



GREEN COUNTY, KENTUCKY

GREENSBURG-SUMMERSVILLE INDUSTRIAL SITES

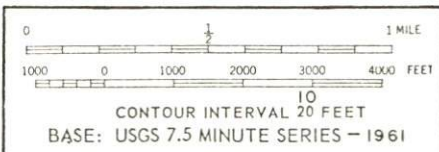
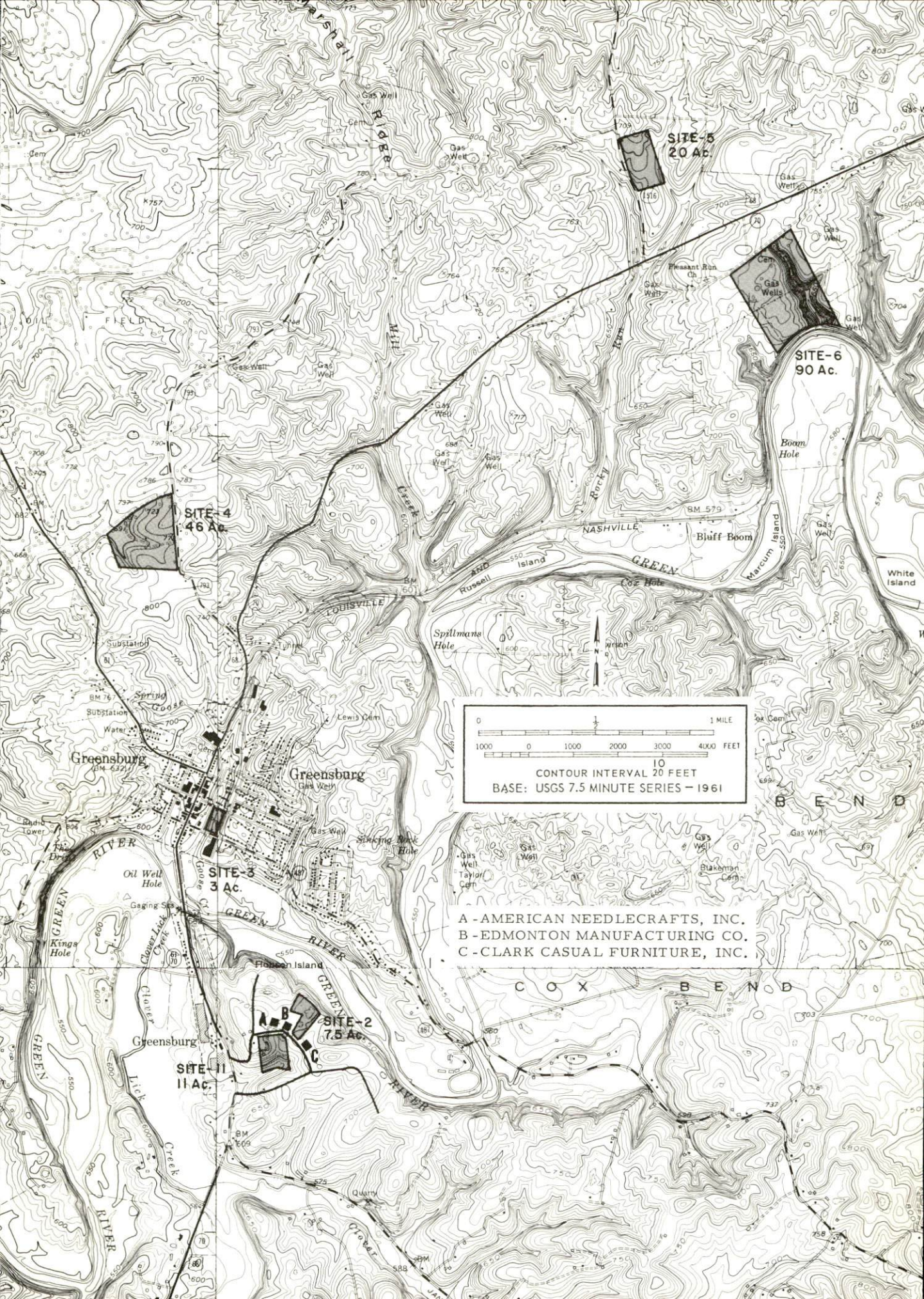
1972

GREENSBURG-SUMMERSVILLE INDUSTRIAL SITES

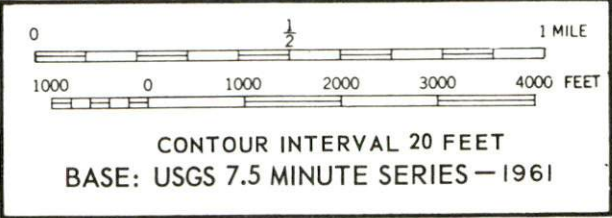
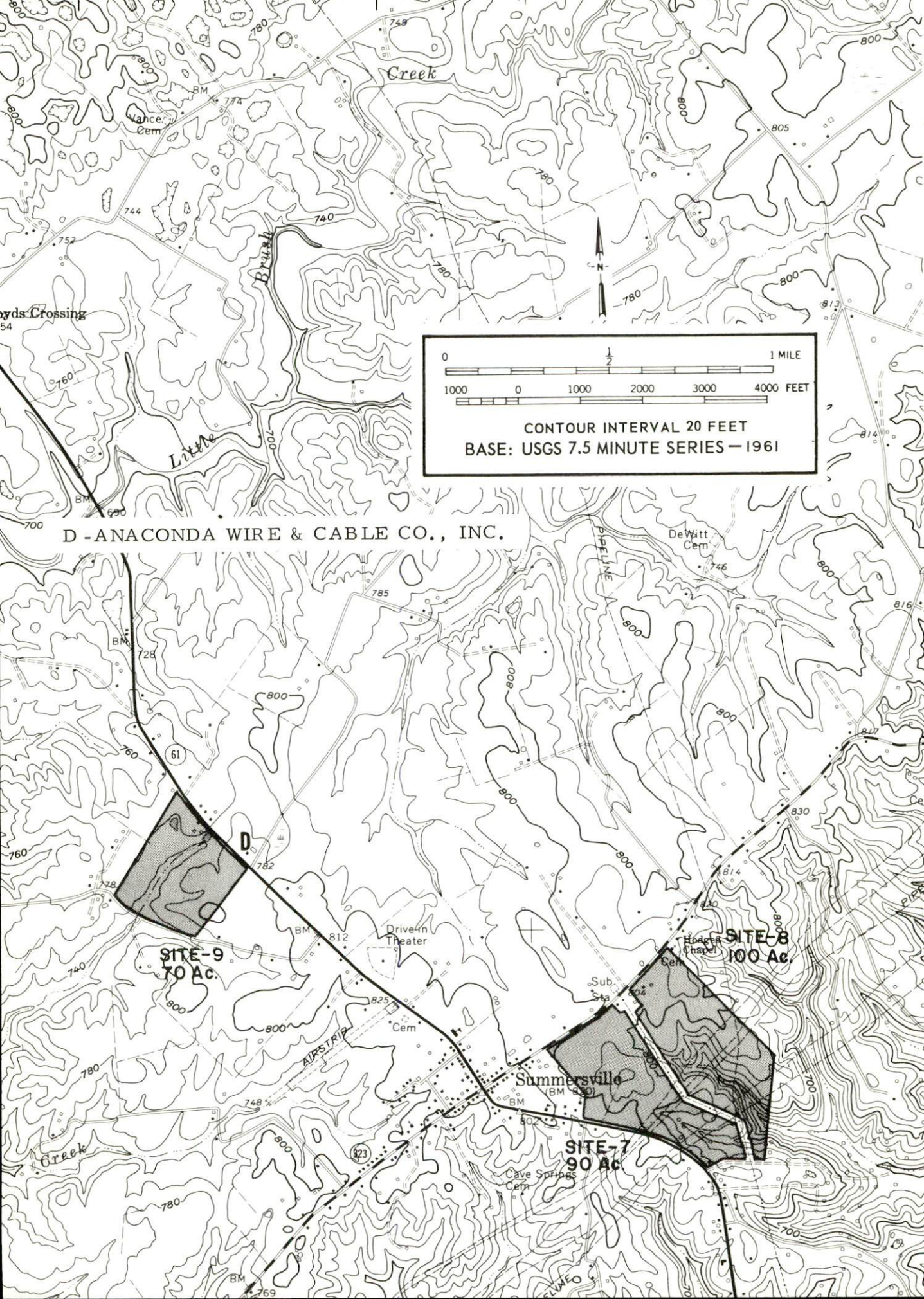
1972

For more information about the following sites, contact Mr. Hardin H. Durham, President of Greensburg-Green County Chamber of Commerce, Greensburg, Kentucky; or the Kentucky Department of Commerce, Capital Plaza Office Tower, Frankfort, Kentucky.

- SITE #2:** ACREAGE: 7.5 acres
 LOCATION: South Greensburg
 ZONING: Industrial
 HIGHWAY ACCESS: Fronts on Industrial Road
 RAILROADS: Not rail served
 WATER: Greensburg Water & Sewer Department
 SIZE LINE: 8-inch line on site
 GAS: Western Kentucky Gas Company
 SIZE MAIN: 2-inch main on site
 ELECTRICITY: Taylor County RECC
 SEWERAGE: Municipal service
 SIZE LINE: 8-inch main on site
 OWNERSHIP: Green County Industrial Foundation
- SITE #3:** ACREAGE: 3 acres
 LOCATION: Within Greensburg city limits
 ZONING: Industrial
 HIGHWAY ACCESS: Frontage on Columbia Avenue and Depot Street
 RAILROADS: Louisville & Nashville Railroad Company
 WATER: Greensburg Water & Sewer Department
 SIZE LINE: 6-inch line on site
 GAS: Western Kentucky Gas Company
 SIZE MAIN: 4-inch main on site
 ELECTRICITY: Kentucky Utilities Company
 SEWERAGE: Municipal service
 SIZE LINE: 8-inch main at site
 OPTIONED BY: Green County Industrial Foundation
- SITE #4:** ACREAGE: 46 acres
 LOCATION: Approximately three-fourths mile from north Greensburg city limits
 ZONING: None
 HIGHWAY ACCESS: Fronts on Kentucky 793
 RAILROADS: Not rail served
 WATER: Green-Taylor Water District
 SIZE LINE: 4-inch line on site
 GAS: Western Kentucky Gas Company
 SIZE MAIN: 4-inch main on site
 ELECTRICITY: Taylor County RECC
 SEWERAGE: Package plant necessary
 OWNERSHIP: Green County Industrial Foundation
- SITE #5:** ACREAGE: 20 acres
 LOCATION: Approximately 3 miles from Greensburg city limits
 ZONING: None
 HIGHWAY ACCESS: Fronts on Kentucky 1516
 RAILROADS: Not rail served
 WATER: Green-Taylor Water District
 SIZE LINE: 6-inch line 1,600 feet from site
 GAS: Nearest gas main approximately 2 3/4 miles from site (Western Kentucky Gas Company)
 ELECTRICITY: Taylor County RECC
 SEWERAGE: Package plant necessary
 OPTIONED BY: Green County Industrial Foundation
- SITE #6:** ACREAGE: 90 acres
 LOCATION: Approximately 3 1/4 miles from Greensburg city limits
 ZONING: None
 HIGHWAY ACCESS: Access road from site to U. S. 68
 RAILROADS: Not rail served
 WATER: Green-Taylor Water District
 SIZE LINE: 6-inch line 1,000 feet from site
 GAS: Nearest gas main approximately 3 miles from site (Western Kentucky Gas Company)
 ELECTRICITY: Kentucky Utilities Company or Taylor County RECC
 SEWERAGE: Package plant necessary
 OWNERSHIP: Privately owned
- SITE #7:** ACREAGE: 90 acres
 LOCATION: Summersville, 5 miles northwest of Greensburg
 ZONING: None
 HIGHWAY ACCESS: Frontage along Kentucky Highways 61 and 323
 RAILROADS: Not rail served
 WATER: Green-Taylor Water District
 SIZE LINE: 6-inch line along west side of Kentucky 91 across from site
 GAS: Western Kentucky Gas Company
 SIZE MAIN: 2-inch main on site
 ELECTRICITY: Taylor County RECC
 SEWERAGE: Package plant necessary
 OWNERSHIP: Privately owned
- SITE #8:** ACREAGE: 100 acres
 LOCATION: Summersville, 5 miles northwest of Greensburg
 ZONING: None
 HIGHWAY ACCESS: Fronts on Kentucky 393
 RAILROADS: Not rail served
 WATER: Green-Taylor Water District
 SIZE LINE: 4-inch line along north side of Kentucky 393 across from site
 GAS: Western Kentucky Gas Company
 SIZE LINE: 2-inch main along north side of Kentucky 393 across from site
 ELECTRICITY: Taylor County RECC
 SEWERAGE: Package plant necessary
 OWNERSHIP: Privately owned
- SITE #9:** ACREAGE: 70 acres
 LOCATION: Summersville, approximately 6 miles from Greensburg
 ZONING: None
 HIGHWAY ACCESS: Fronts on Kentucky 61
 RAILROADS: Not rail served
 WATER: Green-Taylor Water District
 SIZE LINE: 8-inch line on east side of Kentucky 61 across from east corner of site
 GAS: Western Kentucky Gas Company
 SIZE MAIN: 2-inch main along east side of Kentucky 61 across from site
 ELECTRICITY: Taylor County RECC
 SEWERAGE: Package plant necessary
 OWNERSHIP: Privately owned
- SITE #11:** ACREAGE: 11 acres
 LOCATION: South Greensburg
 ZONING: Industrial
 HIGHWAY ACCESS: Fronts on Industrial Road
 RAILROADS: Not rail served
 WATER: Greensburg Water & Sewer Department
 SIZE LINE: 8-inch line along north side of Industrial Road
 GAS: Western Kentucky Gas Company
 SIZE MAIN: 2-inch main along north side of Industrial Road
 ELECTRICITY: Taylor County RECC
 SEWERAGE: Municipal service
 SIZE LINE: 8-inch main along north side of Industrial Road
 OPTIONED BY: Green County Industrial Foundation



A - AMERICAN NEEDLECRAFTS, INC.
 B - EDMONTON MANUFACTURING CO.
 C - CLARK CASUAL FURNITURE, INC.



D - ANACONDA WIRE & CABLE CO., INC.

SITE-9
70 Ac.

SITE-8
100 Ac.

SITE-7
90 Ac.

INDUSTRIAL RESOURCES
GREENSBURG, KENTUCKY

Prepared by
The Kentucky Department of Commerce
in cooperation with
The Greensburg-Green County Chamber of Commerce

1972

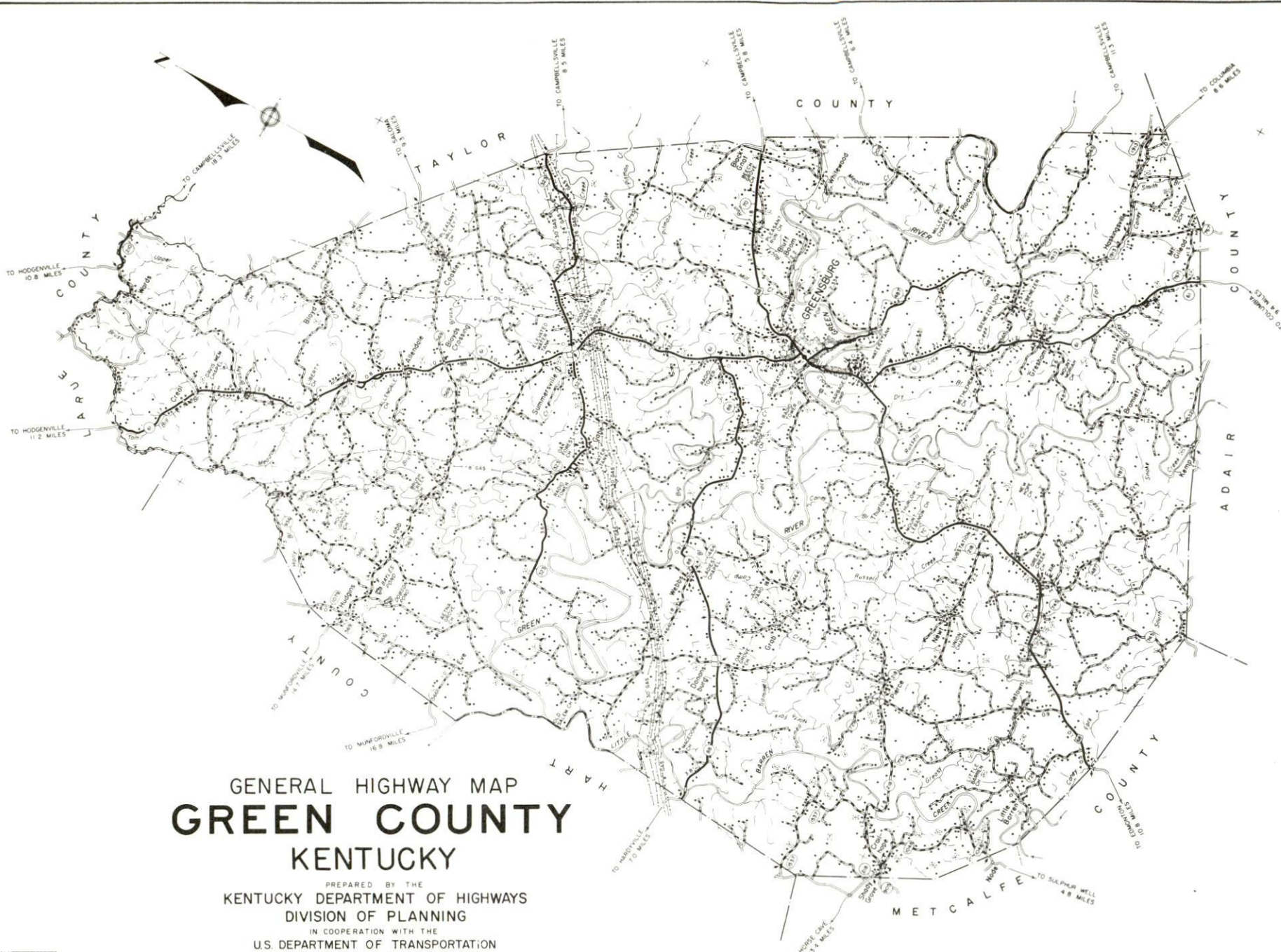
TABLE OF CONTENTS

<u>Chapter</u>	<u>Page</u>
INDUSTRIAL SITES	i
GREENSBURG, KENTUCKY - A RESOURCE PROFILE.	1
THE LABOR MARKET	5
Population Trends	5
General Employment Characteristics, 1971.	5
Manufacturing Employment Trends by Industry	5
Green County Manufacturing Firms, Their Products and Employment	6
Wage Rates for Selected Occupations	8
Labor Organizations	8
Current and Future Labor Supply	9
Total Personal Income	9
Per Capita Personal Income.	9
EDUCATION.	10
Public Schools	10
Vocational Schools	10
Colleges and Universities	11
TRANSPORTATION	12
Rail	12
Truck Service	12
Air	13
Bus	13
Taxi	13
POWER AND FUEL	14
Electricity	14
Natural Gas	14
Other Fuels	14
WATER AND SEWERAGE.	15
Water.	15
Sewerage	16

<u>Chapter</u>	<u>Page</u>
LOCAL GOVERNMENT17
City17
County17
Assessed Value of Property, 197217
Local General Property Tax Rates Per \$100 of Assessed Valuation, 197217
Planning and Zoning17
Safety18
Police18
Fire18
Sanitation18
HEALTH.19
Hospitals19
Nursing Homes19
Public Health.19
OTHER LOCAL FACILITIES.21
Communications21
Library Services21
Religious Institutions21
Financial Institutions23
Hotels and Motels.23
Clubs and Organizations23
RECREATION24
Local24
Area24
AGRICULTURE - NATURAL RESOURCES - CLIMATE26
Agriculture26
Natural Resources26
Climate26
GREEN COUNTY HISTORICAL POINTS OF INTEREST27



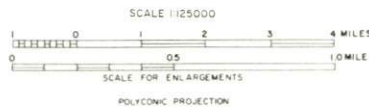
AERIAL VIEW OF GREENSBURG, KENTUCKY



GENERAL HIGHWAY MAP GREEN COUNTY KENTUCKY

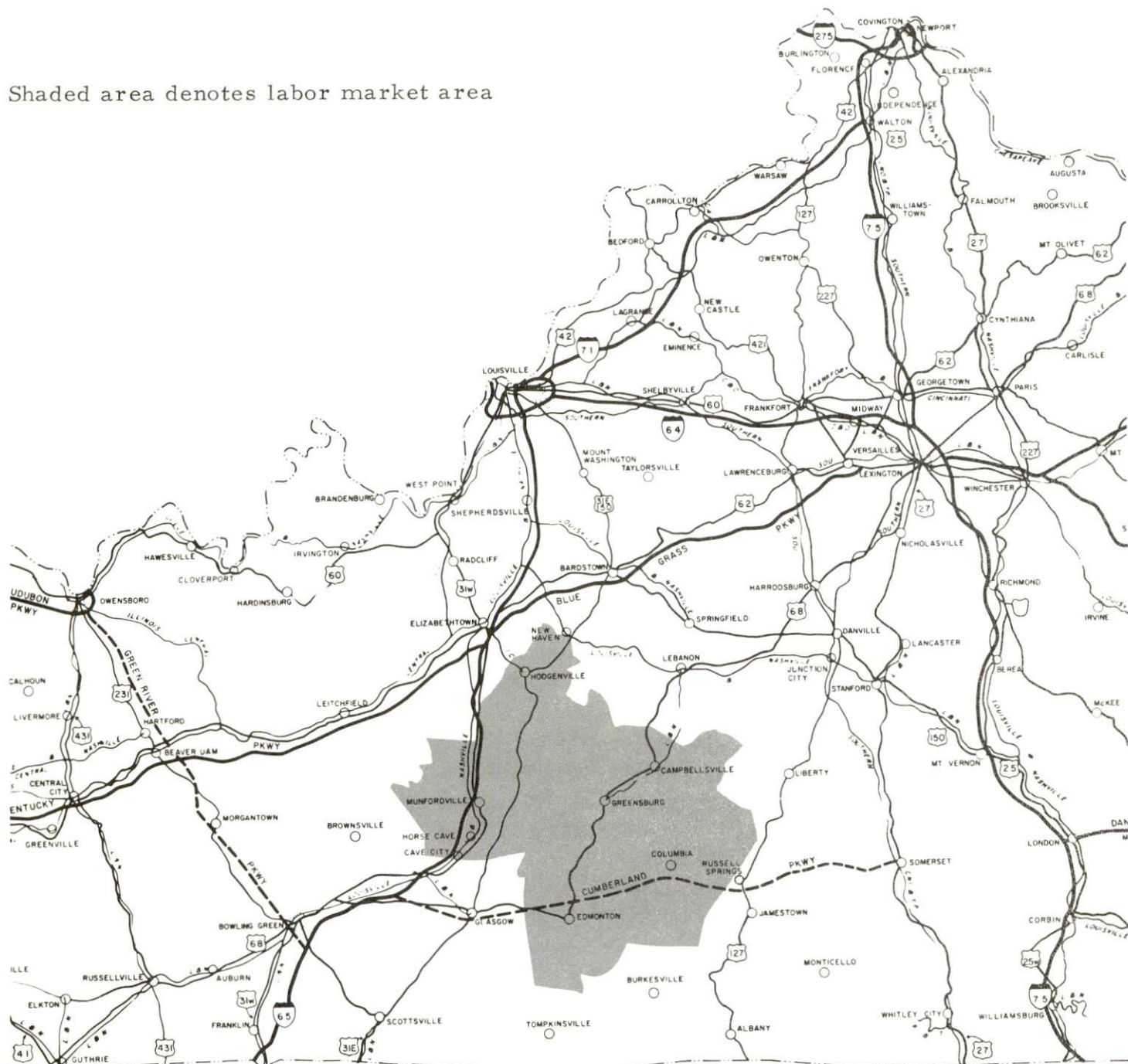
PREPARED BY THE
 KENTUCKY DEPARTMENT OF HIGHWAYS
 DIVISION OF PLANNING
 IN COOPERATION WITH THE
 U.S. DEPARTMENT OF TRANSPORTATION
 FEDERAL HIGHWAY ADMINISTRATION
 BUREAU OF PUBLIC ROADS

ORIGINAL DATA	
1947	
REVISIONS	
DATE	BY



GREENSBURG LABOR MARKET AREA

Shaded area denotes labor market area



GREENSBURG, KENTUCKY - A RESOURCE PROFILE

Location

Greensburg, largest city in Green County, serves as the county seat and is the site of the Old Green County Courthouse. The Courthouse, completed in 1799, is the oldest public building standing in Kentucky. Greensburg is 93 miles southeast of Louisville, Kentucky; 100 miles northeast of Nashville, Tennessee; and 180 miles southwest of Cincinnati, Ohio.

Green County, covering an area of 282 square miles, is located in southcentral Kentucky in the Mississippian Plateau Region. It is bordered by Hart County on the west, Larue County on the north, Taylor County on the east, and Metcalfe and Adair Counties on the south.

Greensburg had a 1970 population of 1,990, while Green County had a population of 10,350.

The Economic Framework

Total employment in Green County in 1971 averaged 3,530, with agriculture providing 1,380 jobs, manufacturing 400 jobs, and government 420 jobs. Since 1961, manufacturing employment has increased by 275 jobs or 218 percent. Major industrial products are draperies, house furnishings, furniture, apparel, enamel coated copper wire, and liquid hydrocarbon.

Per capita income in the county in 1970 was \$2,727. Between 1960 and 1970, per capita personal income increased by approximately 181 percent.

The Greensburg labor market area includes Green and the five surrounding counties. The labor market area employment averaged 25,280 in 1971, including 6,770 in agriculture, 5,605 in manufacturing, and 2,500 in government. Area manufacturing employment has increased by 92 percent since 1961, with the sharpest employment gains in the apparel and primary metals industries.

Resources for Growth

1. There is a current estimated labor supply of 5,610 men and 5,450 women available for industrial jobs in the Greensburg labor market area. In addition, 3,700 young men and 3,525 young women will become 18 years of age by 1978 and potentially available for employment.

2. The Louisville & Nashville Railroad serves Greensburg with a variety of services. Highway transportation is by U. S. 68 and Kentucky Highways 70, 61, 88, and 565. A small craft airport is located only 11 miles northeast of Greensburg and commercial air service is available at Bowling Green, 77 miles away.

3. Electricity and raw water supplies are available in adequate quantities for future industrial growth. Natural gas service is provided by the Western Kentucky Gas Company. Other fuels - propane, butane, and distillate fuel oil - are available from local distributors.

4. There are 5 sites in the Greensburg area available for industrial use. The sites range from 3 to 90 acres. In addition, 3 industrial sites are located at Summersville ranging from 70 to 100 acres.

5. Greensburg is located only 11 miles from a four-year coeducational liberal arts college and is within 40 miles of two junior colleges and one community college.

An area vocational education center offering 10 courses is located in Greensburg. In addition to the regularly scheduled day classes, the center offers a program of evening classes with a current enrollment of approximately 250. In 1969, as a result of its outstanding public health program, an award was presented to the Green County Vocational Education Center for the most significant contribution to public health in Kentucky by the Kentucky Public Health Association.

Additional vocational-technical training is available at the Somerset State Vocational-Technical School, which offers training in 13 fields and is located 67 miles from Greensburg.

Community Programs for Improvement

Greensburg is continuing an aggressive program of community development. Community improvements include the following:

Recent

Basketball courts at the community park have been paved.

A new radio station, WGRK, went into operation in March 1972.

The Peoples Bank was moved into a new building in 1971. This provided additional space, a drive-in facility, and a new community room.

Greensburg Deposit Bank recently remodeled its facility, redecorated the interior of the building, and added a walk-up window.

Property was purchased and the building remodeled for a florist shop.

Two law firms have moved their offices into new, remodeled quarters.

One automobile agency moved into a new building while another agency remodeled and moved into an existing building.

Two new service stations have been constructed and are now in operation.

Additions have been made to two mobile home parks.

An apparel shop rented the adjoining building and doubled its space.

A new mill end fabric shop is now in business.

The city purchased and remodeled a building which now houses the city and county fire equipment. Part of the building has been converted into a teen center.

A recent addition to the vocational school added three shops - welding, machine, and auto body repair.

A new sanitary landfill is now being utilized.

Underway

Two subdivisions are being expanded.

Construction of a new high school building is now underway with completion expected in August 1973. The new school, designed to accommodate 650 students, will have 20 classrooms, materials center, language lab, cafetorium, and a 4,000-seat gymnasium. The \$1,500,000 building will be air-conditioned and carpeted.

A laboratory for testing effluent and an holding basin for sewage treatment are under construction.

Future

Construction of 100 units of low-rent housing.

A new subdivision is to be developed.

Complete camping area with a boat ramp and a miniature golf course is planned for the community park.

Recreation, Entertainment and Livability

Greensburg boasts a fine 65-acre community park developed and financed by the local residents. The park has a swimming pool; 3 softball diamonds, one of which is lighted; a baseball diamond, which has bleachers under roof and is lighted for night games; air-conditioned dining room; pavillion; fishing area; horse show ring, 20 horseshoe pits; 2 tennis courts; 35 picnic areas with grills; equipped playground and croquet court - all in lighted areas. The Central Kentucky Invitational Softball Tournament is held here annually. During the 1972 summer tournament, 40 men's teams from 15 counties participated. A 24-team girls softball tournament was also held, with participation from 11 counties.

Greensburg is the location of the annual Mid-Kentucky State Appaloosa Horse Show, an event which is recognized as a tremendous tourist attraction. Another well-known event is the annual 25-mile Green River Canoe Race.

Other excellent recreational facilities which offer a wide variety of activities are located near Greensburg. The Green River Reservoir, approximately 15 miles from Greensburg, provides facilities for fishing, boating, swimming and picnicking. Six other major lakes, which are excellent for fishing and water sports, are within an hour's drive of Greensburg.

Mammoth Cave National Park, Lake Cumberland State Resort Park, and My Old Kentucky Home State Park are located within 50 miles of Greensburg. Mammoth Cave National Park offers cave tours, scenic boat trips, nature trails, hotel accommodations, cottages, and a dining room. Lake Cumberland State Resort Park has an Olympic pool and a new resort pool, boat and motor rental, dock, launching ramp, 9-hole golf course, and horseback riding. Lake Cumberland provides fine fishing and spectacular scenery. My Old Kentucky Home State Park is the site of Federal Hill, the original Old Kentucky Home. "The Stephen Foster Story," a nationally famous outdoor drama, plays in the amphitheater during the summer months.

THE LABOR MARKET

POPULATION TRENDS ^{1/}

Area	Population			Percent Change	
	1970	1960	1950	1960-70	1950-60
Greensburg	1,990	2,334	1,032	-14.7	+126.2
Labor Market Area	73,354	75,065	78,395	- 2.3	- 4.2
Green County	10,350	11,249	11,261	- 8.0	- 0.1
Adair County	13,037	14,699	17,603	-11.3	- 16.5
Hart County	13,980	14,119	15,321	- 1.0	- 7.8
Larue County	10,672	10,346	9,956	+ 3.2	+ 3.9
Metcalf County	8,177	8,367	9,851	- 2.3	- 15.1
Taylor County	17,138	16,285	14,403	+ 5.2	+ 13.1

GENERAL EMPLOYMENT CHARACTERISTICS, 1971 ^{2/}

Major Employment Group	Employment	
	Green County	Labor Market Area
TOTAL	3,530	25,280
Agricultural	1,380	6,770
Nonagricultural	2,150	18,510
Manufacturing	400	5,604
Government	420	2,500
Trade and Services	420	3,647

MANUFACTURING EMPLOYMENT TRENDS BY INDUSTRY SEPTEMBER 1971 AND 1961 ^{3/}

Industry	Green County			Labor Market Area		
	1971	1961	%Change	1971	1961	%Change
TOTAL	401	126	+218.3	5,717	2,976	+ 92.1
Food & kindred products	33	37	- 10.8	306	355	- 13.8
Apparel, textiles, leather	189	0*	-	4,354	2,110	+106.4
Lumber & furniture	99	81	+ 22.2	382	448	- 14.7
Printing, publishing, paper	3	0	-	54	32	+ 68.8
Stone, clay & glass	16	8	+100.0	32	12	+166.6
Primary metals	61	0	-	136	0	-
Machinery & metal products	0	0	0	440	0	-
Other	0	0	0	13	19	- 31.6

*1961 employment at American Needlecrafts, Inc., not shown.

GREEN COUNTY MANUFACTURING FIRMS,
THEIR PRODUCTS AND EMPLOYMENT ^{4/}

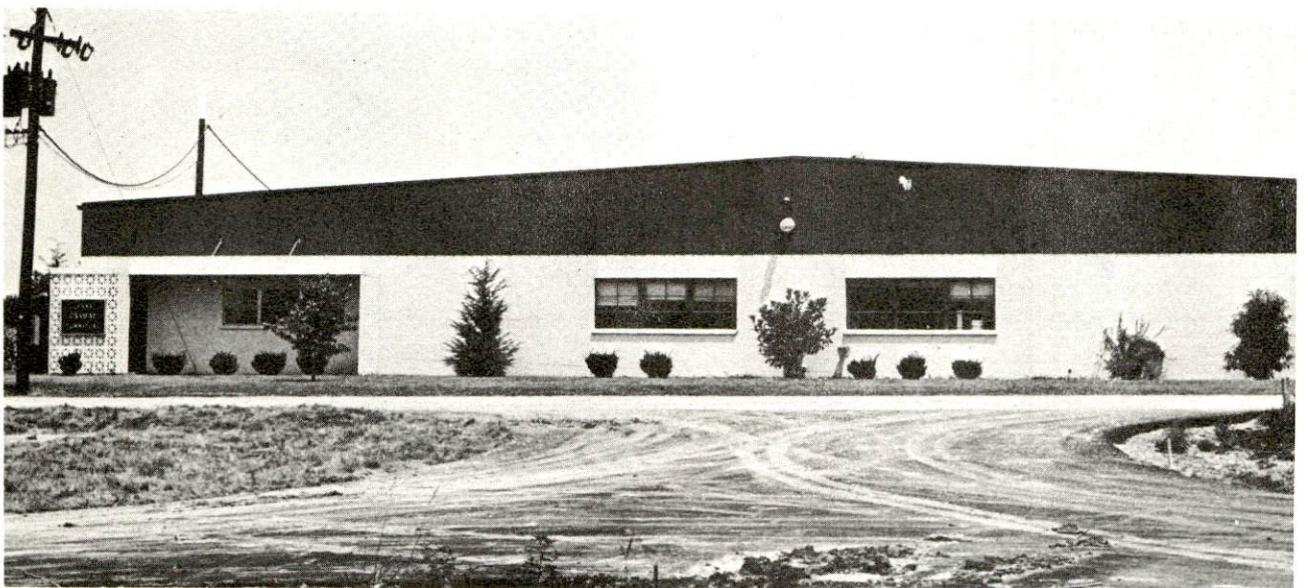
<u>Firm</u>	<u>Product</u>	<u>Employment</u>		
		<u>Total</u>	<u>Male</u>	<u>Female</u>
<u>Greensburg</u>				
American Needlecrafts, Inc.	Quilted bedspreads, comforters, draperies, travel accessories cloth and plastic	120	10	110
Clark Casual Furniture, Inc.	Rattan furniture	95	82	13
Edmonton Manufacturing Co.	Work clothes, uniforms, racing apparel	85	10	75
Green County Milling Co.	Feed	5	4	1
Greensburg Bottling Co.	Carbonated beverages	27	25	2
Greensburg Manufacturing Co.	Furniture dimension stock	103	100	3
Greensburg Record-Herald	Newspaper	3	0	3
Nally & Gibson Asphalt Plant	Bituminous asphalt	4	4	0
Sharpes Cedar & Hardwood Mill	Cedar lumber and post, hardwood lumber	3	3	0
H. R. Squires	Drainage tile	1	1	0
Taylor-Green Ready Mix Co.	Ready mixed concrete, concrete products	6	5	1
Tennessee Gas Pipeline Co.	Liquid hydrocarbon	50	50	0
Winn Milling Co.	Corn meal, feed	5	4	1
Owen Wright	Lumber, tobacco sticks, cedar posts	3	3	0
<u>Summersville</u>				
Anaconda Wire & Cable Co., Inc.	Enamel coated copper wire	60	60	0



EDMONTON MANUFACTURING COMPANY



AMERICAN NEEDLECRAFT



CLARK CASUAL FURNITURE

WAGE RATES FOR SELECTED OCCUPATIONS
GREENSBURG, KENTUCKY 5/

<u>Classification</u>	<u>Wages Per Hour</u>	
	<u>Starting</u>	<u>Maximum</u>
<u>Production Employees</u>		
Assembler	\$1.60	\$1.75
Inspector	1.60	2.50
Production Laborer	1.60	1.90
Lathe Operator	1.60	2.00
<u>Service Employees</u>		
Electrician (Class-A)	\$2.00	\$3.00
Laborer	1.60	1.75
Welder, Acetylene, Carbon and Arc	2.00	2.75
Mechanic, Maintenance	2.00	3.00
Truck Driver, Industrial (Class-A)	1.60	2.00
<u>Office Employees</u>		
Bookkeeper	\$1.60	\$2.00
File Clerk	1.60	1.90
Receptionist	1.60	2.00
Secretary	1.60	2.25
Typist	1.60	2.00

LABOR ORGANIZATIONS

<u>Union</u>	<u>Representing workers at:</u>
Communications Workers of America	Clark Casual Furniture, Inc.
Teamsters	Anaconda Wire & Cable Co., Inc.

CURRENT AND FUTURE LABOR SUPPLY -
GREENSBURG LABOR MARKET AREA

Area	1972			Future Labor Supply by 1978 ^{7/} (Becoming 18 Years of Age)		
	Current Labor Supply ^{6/} Total	Male	Female	Total	Male	Female
Labor Market Area	11,062	5,613	5,449	7,233	3,707	3,526
Green County	1,355	615	740	974	513	461
Adair County	2,383	1,341	1,042	1,220	622	598
Hart County	2,168	922	1,246	1,423	746	677
Larue County	1,818	809	1,009	1,179	600	579
Metcalfe County	1,245	613	632	807	418	389
Taylor County	2,093	1,313	780	1,630	808	822

TOTAL PERSONAL INCOME ^{8/}

Area	1970	1960	% Change
Green County	\$ 27,609,000	\$ 10,900,000	+153.3
Labor Market Area	172,351,000	74,421,000	+131.6
Kentucky	9,719,647,000	4,779,695,000	+103.4

PER CAPITA PERSONAL INCOME ^{9/}

Area	1970	1960	% Change
Green County	\$2,727	\$ 969	+181.4
Labor Market Area	\$1,847 to 2,826	\$779 to 1,383	NA
Kentucky	3,019	1,573	+ 91.9

EDUCATION

Public Schools

	<u>Green County</u>
Total Enrollment	1,971
Elementary	1,347
High School	624
Student-Teacher Ratio	19-1
Elementary	19-1
High School	19-1
State Rating of High School	Standard
Percent High School Graduates to College	27.8
Current Expenditures Per Pupil	\$504.85
Bonded Indebtedness, June 30, 1972	\$1,811,000

Vocational Schools

	<u>Nearest Area School</u>
Location	Somerset State Vocational-Technical School
Miles Distant	Somerset
Curriculum	67
	Aircraft Technical Maintenance
	Appliance Repair
	Auto Mechanics
	Drafting
	Machine Shop
	Printing
	Electronics (Technology)
	Data Processing
	Clerical
	Secretarial
	Marketing and Distributive Education
	Health Careers
	Learning Lab

Nearest Extension Center

Location Greensburg
Curriculum Auto Body Repair
Auto Mechanics
Carpentry
Electricity
Machine Shop
Welding
Clerical
Secretarial
Health Careers
Jr. Accounting Management

Colleges and Universities

<u>Name</u>	<u>Area - Within 40 miles</u>		<u>Highest Degree Conferred</u>
	<u>Location</u>	<u>Enrollment</u>	
Campbellsville College	Campbellsville	856	Baccalaureate
Lindsey Wilson College	Columbia	324	Associate
Saint Catharine College	Saint Catharine	141	Associate
Elizabethtown Community College	Elizabethtown	679	Associate

TRANSPORTATION

Rail

Line serving Greensburg - Louisville & Nashville Railroad Company

Services - Carload freight, switching facilities, siding space, REA Express pickup and delivery service

RAILWAY TRANSIT TIME FROM GREENSBURG, KENTUCKY, TO: 10/

<u>City</u>	<u>No. of Days CL</u>	<u>City</u>	<u>No. of Days CL</u>
Atlanta, Ga.	3	Knoxville, Tenn.	2
Birmingham, Ala.	2	Los Angeles, Calif.	5
Chicago, Ill.	4	Louisville, Ky.	1
Cincinnati, Ohio	2	Nashville, Tenn.	2
Cleveland, Ohio	2	New Orleans, La.	3
Detroit, Mich.	4	New York, N. Y.	4
East St. Louis, Ill.	2	Pittsburgh, Pa.	4

Truck Service

Company

Home Office

Central Motor Express, Inc.
 McDuffee Motor Freight, Inc.
 (United Trucking) (Restricted)
 United Parcel Service, Inc.

Campbellsville, Kentucky
 Lebanon, Kentucky
 St. Charles, Illinois

HIGHWAY MILES AND TRUCK TRANSIT TIME IN DAYS FROM GREENSBURG, KENTUCKY, TO SELECTED MARKET CENTERS

<u>City</u>	<u>Highway Miles</u>	<u>Delivery Time 11/</u>		<u>City</u>	<u>Highway Miles</u>	<u>Delivery Time</u>	
		<u>LTL</u>	<u>TL</u>			<u>LTL</u>	<u>TL</u>
Atlanta, Ga.	357	3	1	Los Angeles, Calif.	1,940	5	3
Birmingham, Ala.	306	3	1	Louisville, Ky.	93	1	1
Chicago, Ill.	390	3	1	Nashville, Tenn.	100	1	1
Cincinnati, Ohio	180	2	1	New Orleans, La.	724	3	1
Cleveland, Ohio	424	2	1	New York, N. Y.	781	5	3
Detroit, Mich.	445	3	2	Pittsburgh, Pa.	469	3	1
Knoxville, Tenn.	160	3	1	St. Louis, Mo.	330	3	1

Air

Local

Taylor County Airport
Location: 11 miles northeast of Greensburg
Runways: 1 paved
Length: 3,000 feet
Traffic Control: Tetrahedron, wind sock
Lighting: Runway lights sundown to sunrise
Services: 80-100 octane, jet A-50, charter service, flight instructions, taxi, coffee shop

Nearest Commercial

Bowling Green-Warren County Municipal Airport
Location: Bowling Green, 77 miles from Greensburg
Runways: 2 paved
Length: 4,000 feet; 6,500 feet
Traffic Control: Wind tee, Airport Advisory Service
Lighting: Runways and obstructions, beacons and wind tee until midnight
Services: 80 and 100 octane, jet A-50, storage, minor A & E repairs, FAA Flight Service Station, taxi and rental car service, restaurant, Wright Airlines

Bus

Southern Greyhound Bus Line

Taxi

Two companies, 24-hour radio-dispatched service

POWER AND FUEL

Electricity

Company serving Greensburg - Kentucky Utilities Company

Source of power - Kentucky Utilities Company

Total generating capacity - 1,215,000 KW

Industrial rates furnished by - Kentucky Utilities Company, 110 Public Square, Greensburg, Kentucky

Company serving Green County - Taylor County RECC; Farmers RECC

Source of power - East Kentucky Power Cooperative

Total generating capacity - 548,000 KW

Industrial rates furnished by - Taylor County RECC, West Main Street, Campbellsville, Kentucky; Farmers RECC, 504 South Broadway, Glasgow, Kentucky

Natural Gas

Company serving Greensburg - Western Kentucky Gas Company

Source of supply - Tennessee Gas Pipeline Company

Size of transmission mains - 24-inch (supplier); 6-inch (distributor)

Distribution mains - 4, 3, and 2 inches

Distribution pressure - 10 to 60 psi

Btu content - 1,020 per cubic foot; Specific gravity - .58

Rates - Industrial rates will be furnished upon request by the Western Kentucky Gas Company, 410 East Main Street, Campbellsville, Kentucky.

Other Fuels

Propane and butane - Mi-Gas Company

Doxol Gas Company

Ashland Petroleum Company (11 miles away)

Fuel Oils -

Distillate fuel oil distributors - Standard Oil (Bulk plant)

Arco (Bulk plant)

Ashland Oil (Bulk plant - 11 miles away)

Shell Oil (Bulk plant - 11 miles away)

Gulf Oil (Bulk plant - 11 miles away)

Sunoco (Bulk plant - 25 miles away)

Residual fuel oil - arrangements must be made with the refinery.

Low sulphur content coal - Available in Kentucky

WATER AND SEWERAGE

Water

Company serving Greensburg - Greensburg Water & Sewer Department
 Source - Green River
 Treatment plant capacity - 720,000 gpd
 Average daily consumption - 325,000 gallons
 Peak daily consumption - 400,000 gallons
 Type treatment - settling, filtration, chlorination, fluoridation
 Storage capacity - 500,000 gallons
 Size mains - 8, 6, and 2 inches
 Average pressure - 80 psi
 Average temperature - 70 degrees Fahrenheit

MONTHLY WATER RATES FOR WHOLESALE
 AND INDUSTRIAL CONSUMERS

First	2,000 gals. or less	\$3.80 (minimum per month)
Next	3,000 gals.	1.45 per M gals.
Next	5,000 gals.	.95 per M gals.
Next	10,000 gals.	.80 per M gals.
Next	25,000 gals.	.60 per M gals.
All over	45,000 gals.	.30 per M gals.

Name of water district - Green-Taylor Water District
 Area served - Northern part of Green County and western part of Taylor County
 Date when water district began operating - 1966
 Source of supply of treated water - Greensburg Water & Sewer Department
 Amount of water which can be purchased in a 24-hour period - 500,000 gallons
 Peak amount of water used in a 24-hour period - 148,000 gallons
 Storage capacity - 160,000 gallons
 Average pressure - 80 - 85 psi
 Average Temperature - 47 degrees winter; 70 degrees summer
 Size mains - 8, 6, 4, 3, and 2 inches

Monthly rates:

First	2,000 gallons	\$5.90 (minimum)
Next	2,000 gallons	2.25 per 1,000 gallons
Next	6,000 gallons	1.50 per 1,000 gallons
Next	15,000 gallons	1.00 per 1,000 gallons
Over	25,000 gallons	.50 per 1,000 gallons

Surface water sources - Green River

Average discharge - Green River at Greensburg 1,057 cfs (31 years, unadjusted, USGS)

Expected ground water yield - 50 to 200 gpm in westcentral portion of county; 5 to 50 gpm in northern and southern portions of county; 5 gpm or less in eastcentral portion of county

Sewerage

Company serving Greensburg - Greensburg Water & Sewer Department

Design capacity - 500,000 gallons per day

Average daily flow - 200,000 gallons

Treatment - primary and secondary

Type treatment - aeration

Treated effluent discharged into - Green River

Size of sanitary mains - 8 and 10 inches

Rates - one-half of monthly water bill

LOCAL GOVERNMENT

City

Structure - Mayor - 4-year term; 6 councilmen - 2-year terms
 Budget 1971-72 - General Fund \$58,500; Water and Sewer Fund \$126,000
 Fees and licenses - Unloading licenses - \$15 to \$50

County

Structure - County Judge - 4-year term; 4 magistrates - 4-year terms
 Budget 1971-72 - General Fund \$95,802; Road Fund \$43,000

Assessed Value of Property, 1972

<u>Classes of Property*</u>	<u>Greensburg</u>	<u>Green County</u>
Real Estate	\$10,175,650	\$47,579,820
Tangibles	2,765,410	7,042,675
Public Service		16,957,186

Local General Property Tax Rates Per \$100 of Assessed Valuation, 1972 ^{12/}

<u>Taxing Unit**</u>	<u>Greensburg</u>	<u>Green County</u>
State	\$.015	\$.015
County	.207	.207
School	.536	.536
City	.235	
Total	\$.993	\$.758

Planning and Zoning

Agency - Greensburg Planning Commission
 Plans completed - Transportation Plan (Major Street Plan) (1965),
 Community Facilities Plan (1965), Zoning Ordinance (1965), Public
 Improvements Program (1965), Central Business District and Parking (1970)
 Codes adopted - Building, Housing, Plumbing, Electric, Fire and Gas
 Other programs - Public Housing

*Property assessed at 100 percent of fair value.

**Manufacturing machinery, raw materials inventories and goods in process inventories are not subject to local tax. State rate is only \$0.15 per \$100.

Safety

Police

Greensburg

Green County

Total staff	4 full-time 1 part-time	3
Radio-patrol cars	1	2
Other equipment	standard	standard

Fire

American Insurance Association Fire Rating	7	
Volunteers	24	24
Equipment:		
500 gpm pumpers	1	1
250 gpm pumper		1
rescue truck	1	
auxiliary tank truck - 500-gallon	1	
Other		250 gpm auxiliary pump

Sanitation

Greensburg

Type service	municipal
Cost:	
residential	\$2.75 per month
business	\$5 to \$25 per month
Collection frequency:	
residential	weekly
business	weekly and daily
Trash pickup	weekly
Disposal method	sanitary landfill

HEALTH

Hospitals

<u>General Hospital</u>	<u>Location</u>	<u>Beds</u>
Jane Todd Crawford Memorial Hospital	Greensburg	44

General hospital facilities - X-ray, laboratory, operating room, emergency room, emergency outpatient service, recovery room, oxygen, electrically operated beds, pharmacy, air conditioning

Medical staff - 4 medical doctors, 9 registered nurses, 8 licensed practical nurses, 1 surgeon

Other

Mental Health Regional Office

Nursing Homes

	<u>Number</u>	<u>Beds</u>
Personal care home	1	76

Public Health

Facility - Green County Health Department

Staff - Nurse, clerk, sanitarian, health officer-administrative assistant (part-time)

Budget 1971-72 - \$25,590



JANE TODD CRAWFORD
MEMORIAL HOSPITAL



RESIDENTIAL AREA

OTHER LOCAL FACILITIES

Communications

Telephone - General Telephone Company of Kentucky
Services - all standard services

Telegraph - Western Union (Lebanon office)
Services - telephone

Postal - U. S. Post Office
Class - Second
Mail received - 3 times daily
Mail dispatched - 3 times daily

Newspapers - Greensburg Record-Herald
Weekly and circulation - 3,850
Other papers received from - Louisville, Kentucky

Radio - WGRK
Stations received from - Lebanon, Campbellsville, Louisville, and
Lexington, Kentucky

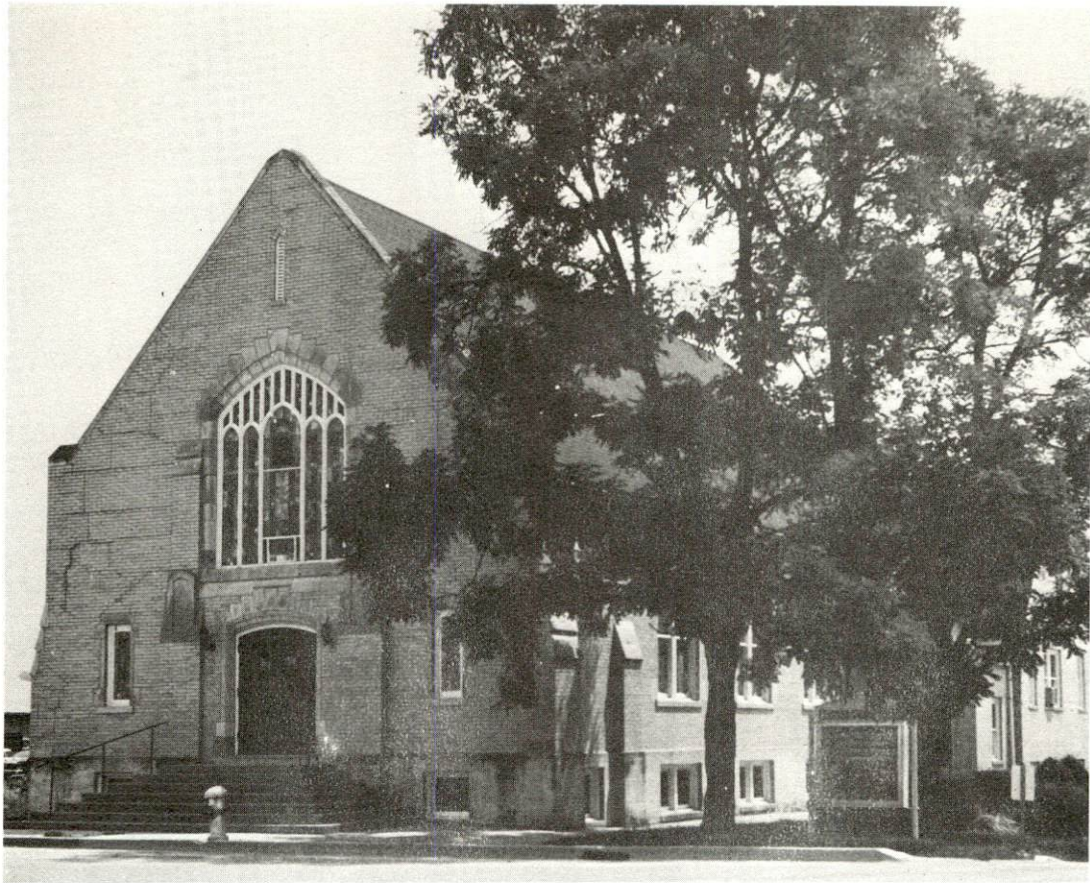
Television -
Reception from - Louisville, Lexington and Bowling Green, Kentucky
Kentucky Educational Television - Channel 23, Elizabethtown transmitter

Library Services

Public libraries - Green County Public Library
Size collection - approximately 16,500 volumes
Circulation, 1971-72 - 78,678 (combined library and bookmobile)
Services - printings, records, film strips, bookmobile

Religious Institutions

Number of churches - 10
Denominations - Church of Christ, Christian, Presbyterian USA,
Cumberland Presbyterian, Baptist, Methodist, Catholic



METHODIST CHURCH



BAPTIST CHURCH

Financial Institutions

<u>Bank</u>	<u>Statement as of June 30, 1972</u>	
	<u>Assets</u>	<u>Deposits</u>
The Peoples Bank	\$11,440,544.77	\$10,456,287.67
Greensburg Deposit Bank	11,766,600.21	10,442,928.18

Hotels and Motels

Number - 2
Units - 55

Clubs and Organizations

Business and Civic - Greensburg-Green County Chamber of Commerce,
Jaycees, Lions, Rotary

Fraternal - American Legion, Masons

Women's - Eastern Star, American Legion Auxiliary, Homemakers,
Woman's Club, Garden Club, Art Club, Jane Todd Hospital Auxiliary

Youth - Boy Scouts, Beta Club, Babe Ruth League, Co-ed Y, Cub Scouts,
FTA, FHA, 4-H, FFA, Girl Scouts, Little League

Other - Green County Industrial Foundation, Farm Bureau, Greensburg
Historical Society, Sportsman Club, PTA, Ministerial Association

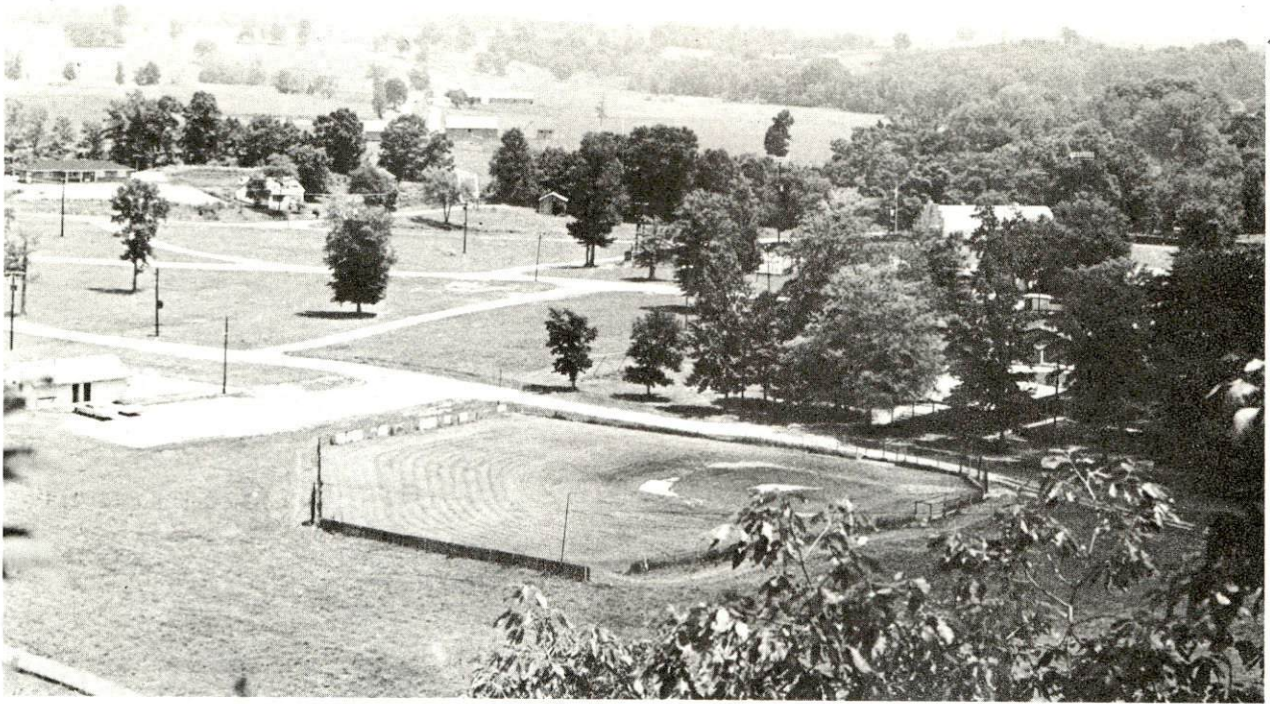
RECREATION

Local

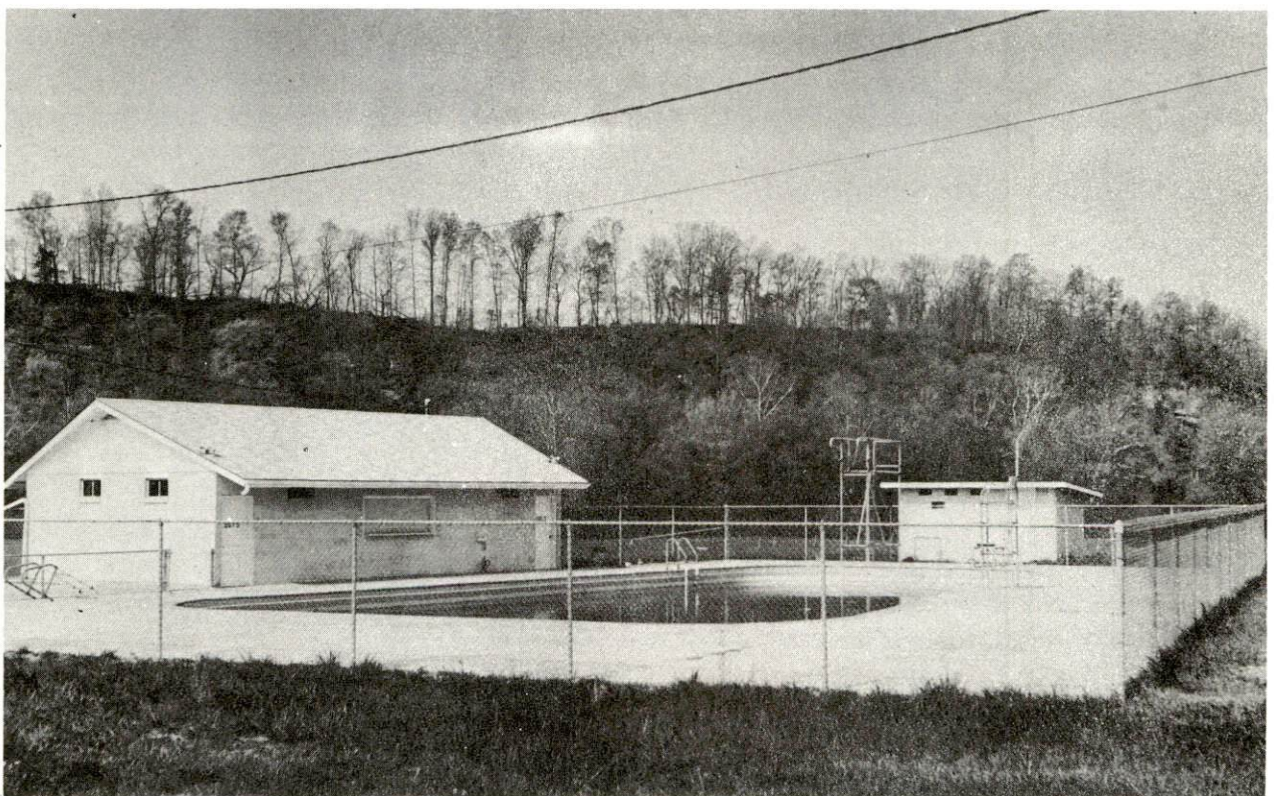
	<u>Greensburg</u>	<u>Green County</u>
Public Recreation Facilities		
Supervised program -	yes	
Park -	1	
Playgrounds -	3	
Swimming pool -	1	
Tennis courts -	4	
Baseball diamonds -	2 (one lighted)	
Softball diamonds -	3 (one lighted)	3 (lighted)
Football field -	1	
Other -	Teen Center	Archery Range, Green County Sportsman Club (a registered trap range) Green County Saddle Club
Private Recreation Facilities		
Country club -	1	
Golf course -	1	
Movie theater -		Drive-in (1)
Other -		Skating rinks (2)
Tourist Attractions		
Old Green County Courthouse		
Annual Green River Canoe Race (25 miles)		
Mid-Kentucky State Appaloosa Horse Show		
120 miles of fishing streams, 20 miles of which are stocked with rainbow trout		

Area (Within 50 miles)

Green River Reservoir
 Mammoth Cave National Park
 Lake Cumberland State Resort Park
 Abraham Lincoln Birthplace National Historic Site
 My Old Kentucky Home State Park
 Lincoln Homestead State Park



AMERICAN LEGION PARK



MUNICIPAL SWIMMING POOL

AGRICULTURE - NATURAL RESOURCES - CLIMATE

Agriculture 13/

	<u>Green County</u>	<u>Labor Market Area</u>
Total land area (acres)	180,480	1,241,600
Percent of area in farm land	82.5	79.5
Number of farms	1,548	9,887
Average size of farms (acres)	96.2	99.8
1964 value of all farm products	\$ 7,057,384	\$ 40,817,778
Value per farm	4,559	4,128
Total crop sales	4,236,530	23,251,867
Total livestock & livestock products	2,820,852	17,545,439
1969 agricultural production included:		
Burley tobacco (lbs.)	5,690,000	32,232,000
Corn (bu.)	608,000	4,408,000
Cattle and calves (number)	25,400	186,400
Hogs and pigs (number)	9,600	66,900
Milk production (1968) (lbs.)	34,200,000	258,390,000

Natural Resources

Principal mineral resources	petroleum, limestone
Other mineral resources	natural gas
Acres of commercial forest land	59,700
Most abundant tree species	white oak, red oak, hickory, yellow poplar, beech, hard maple, ash

Climate 14/

	<u>Green County</u>
Temperature	
Annual mean (30-year record)	55.6 degrees
Average annual 1970	54.5 degrees
Record highest July, 1966* (7-year record)	98 degrees
Record lowest January, 1966* (7-year record)	-10 degrees
Seasonal heating degree days (30-year record)	4,683
Precipitation	
Mean annual total (30-year record)	44.73 inches
Mean annual snow and sleet (26-year record)	16.4 inches
Total precipitation 1970	47.50 inches
Mean number days precipitation (.01 inch or more) (26-year record)	129
Average number days thunderstorms (26-year record)	47
Prevailing winds (17-year record)	South

*Also on earlier dates, months and years.

GREEN COUNTY HISTORICAL POINTS OF INTEREST

- (1) The oldest courthouse west of the Alleghenies was finished in 1804. It is the second Green County Courthouse and was designed by Stone Hammer Metcalfe, who later became Governor of Kentucky.
- (2) In the far east room of the bank building President Andrew Jackson spent the night. Jackson's Dairy contains this entry, "September 26, 1832, arrived at Greensburg late in the day, spent the night here. September 17, 1832, spent day at Brents Tavern on Little Barren River."
- (3) New Athens Academy was the first organized in 1805 and taught by Reverend John Howe. This academy was in the east room of the old courthouse and was later moved to the Clerk's office, the stone building adjacent to the present City Hall.
- (4) General Hobson's Home. Hobson fought in the War with Mexico and organized the 13th Kentucky Volunteers, Infantry in the Civil War. Hobson was the man who caught John Hunt Morgan.
- (5) William H. Herndon, Lincoln's law partner, was born here on Christmas Day, 1818.
- (6) Mentor Graham, "The Man Who Taught Lincoln," was head master of the Greensburg School from 1818 to 1823.
- (7) General William T. Ward's home. General Ward served in the Mexican War and organized Regiments 13, 21, 27 in Greensburg. Men under his command were accorded the distinction of being issued the first Spencer repeating rifles ever used in battle. At the Battle of Resaca, Georgia, he lost 963 men in a 20 minute engagement. Thus he acquired the dubious distinction of being second only to Pickett at Gettysburg in the number of men lost.
- (8) Camp Ward was the most Southern and Western Union Camp in the Civil War. Men from this camp fought the first battle of the Civil War in Kentucky at the Battle of Hutchinson's Farm in Hart County.
- (9) Head of steamboat navigation on Green River. In 1826, the steamboat "Sally Anderson" docked here.
- (10) Home of Jane Todd Crawford. This was the woman upon whom the world's first successful ovariectomy was performed. Mrs. Crawford rode horse back from here to Danville where Dr. Ephrim MacDowell removed a 23-pound tumor in a 30-minute operation without the benefit of an anesthetic.

- (11) Here in 1768 a group of hunters from the Yadkins and Clinch River Valleys of North Carolina camped and hunted for two years. Thus the name "long hunters." It was their glowing description of the good land and abundance of game that more than anything else led the first pioneers to Kentucky.
- (12) At a large spring here a Mr. Gray built a station or "stockade" some time prior to 1775.
- (13) A well drilled here for salt in 1825 produced natural gas in great quantities. It accidentally caught on fire in 1826 and burned continuously for over 100 years.
- (14) Pitman's Station located on the bluff overlooking "the narrows of Pitman Creek," was one of the earliest stations in Kentucky and a stopping place for pioneers who traveled the Cumberland Trace.
- (15) Ninian Edwards, scholar and friend of Lincoln, jurist, Governor of Illinois twice, and ambassador to Mexico, was admitted to the Greensburg bar in 1795. His home in Greensburg has never been located.
- (16) David Rice the first Presbyterian Missionary west of the Alleghenies acquired the title "Father Davie Rice," probably as a title of respect. He owned 400 acres of land and lived and died here. This is from a letter he sent to the Philadelphia Presbytery. "The founding of a church here is difficult, since I find few people inclined either toward man or God."
- (17) Home of Nathaniel Owens, the first sheriff of Green County in 1792. He was the father of Mary Owens, Lincoln's Sweetheart, the setting of the book "Lincoln's other Mary," written by Gerald McMurtary. Also the site of the Brush Creek Academy where Mentor Graham, "The Man Who Taught Lincoln," received his formal education.
- (18) Birthplace of Mentor Graham: "The Man Who Taught Lincoln."
- (19) Site of old iron furnace. Pig iron was shipped to New Orleans by flatboat around 1812. Also the site of the only beheading to ever take place in Green County.
- (20) Skaggs Station, site of the last known Indian raid in Green County.
- (21) The Cumberland Trace, the road over which most of the pioneers moved westward across Kentucky. It came from Cumberland Gap to Logan's Station. From here down Rolling Fork River over Muldrough's Hill to Robinson's Creek, down the Creek to Elkhorn. Over the hill to Buckhorn Creek then to the South fork of Pitman Creek, over the hill to Trace Creek (Happyville), down Trace Creek to a Ford across Green River and crossed Little Barren River at Elk Lick Ford, then on West.

As early as 1850, Green County's population had reached 9,060. Since that time, the population has slightly fluctuated, with 11,871 in 1880, 12,255 in 1900, and 11,261 in 1950. Slight decreases in population were recorded during the 1950 and 1960 decades. In 1970, the county had a population of 10,350.

Agriculture provided 1,380 of the county's 3,530 jobs in 1971. Manufacturing employment increased 218 percent or 275 jobs between 1961 and 1971. Largest of the county's firms are American Needlecrafts, Inc., Clark Casual Furniture, Inc., Edmonton Manufacturing Company, and Greensburg Manufacturing Company.

SOURCES OF INFORMATION

- 1/ U. S. Department of Commerce, Bureau of the Census, Census of Population, 1950, 1960, 1970.
- 2/ Kentucky Department of Economic Security, Division of Research and Statistics.
- 3/ Kentucky Department of Economic Security, Number of Workers in Manufacturing Industries Covered by Kentucky Unemployment Insurance Law Classified by Industry and County, September 1971, September 1961.
- 4/ Kentucky Department of Commerce, Division of Research and Planning.
- 5/ Kentucky Department of Economic Security, Division of Employment Service, Glasgow Office.
- 6/ Kentucky Department of Economic Security, Kentucky Labor Supply Estimates by County, January 1972.
- 7/ Kentucky Department of Commerce, Future Labor Supply by 1978.
- 8/ University of Kentucky, Office of Development Services and Business Research, Total Personal Income for Kentucky.
- 9/ University of Kentucky, Office of Development Services and Business Research, Per Capita Income in Kentucky.
- 10/ Louisville & Nashville Railroad, Louisville, Kentucky.
- 11/ Central Motor Express, Inc., Campbellsville, Kentucky.
- 12/ Kentucky Department of Revenue.
- 13/ U. S. Department of Commerce, Bureau of the Census, Census of Agriculture, 1964. U. S. Department of Agriculture and Kentucky Department of Agriculture, Kentucky Agricultural Statistics, 1970.
- 14/ U. S. Department of Commerce, Environmental Science Services Administration, Climatological Data, 1971.

All other information was obtained from governmental offices, local businesses and organizations.

This copy has been prepared by the Kentucky Department of Commerce,
Division of Research and Planning, and the cost of printing paid from
state funds.