

1972

# Industrial Resources: Greenup County

Kentucky Library Research Collections  
Western Kentucky University, [spcol@wku.edu](mailto:spcol@wku.edu)

Follow this and additional works at: [https://digitalcommons.wku.edu/greenup\\_cty](https://digitalcommons.wku.edu/greenup_cty)

 Part of the [Business Administration, Management, and Operations Commons](#), [Growth and Development Commons](#), and the [Infrastructure Commons](#)

---

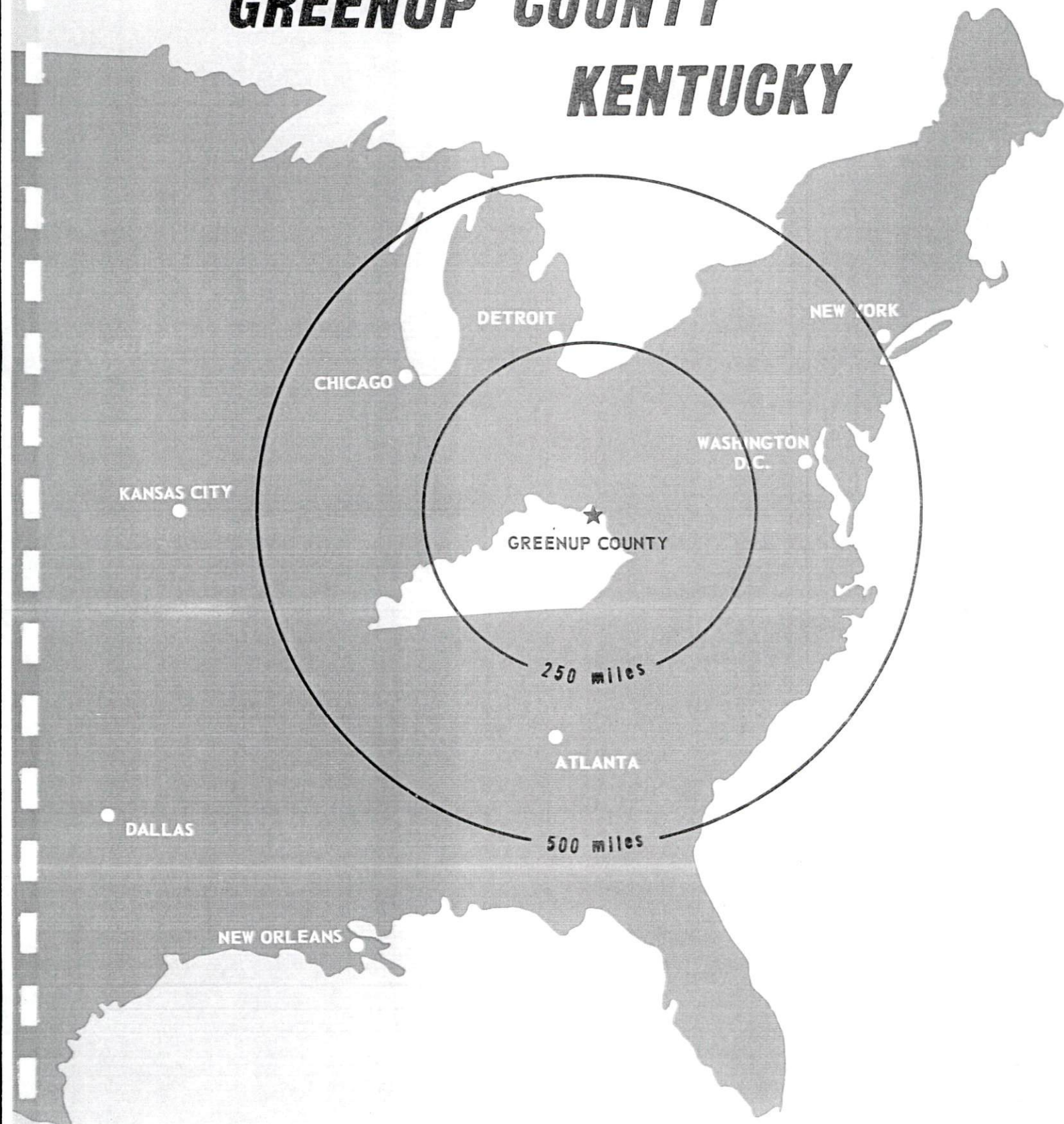
## Recommended Citation

Kentucky Library Research Collections, "Industrial Resources: Greenup County" (1972). *Greenup County*. Paper 10.  
[https://digitalcommons.wku.edu/greenup\\_cty/10](https://digitalcommons.wku.edu/greenup_cty/10)

This Report is brought to you for free and open access by TopSCHOLAR®. It has been accepted for inclusion in Greenup County by an authorized administrator of TopSCHOLAR®. For more information, please contact [topscholar@wku.edu](mailto:topscholar@wku.edu).

# INDUSTRIAL RESOURCES

## ***GREENUP COUNTY*** ***KENTUCKY***



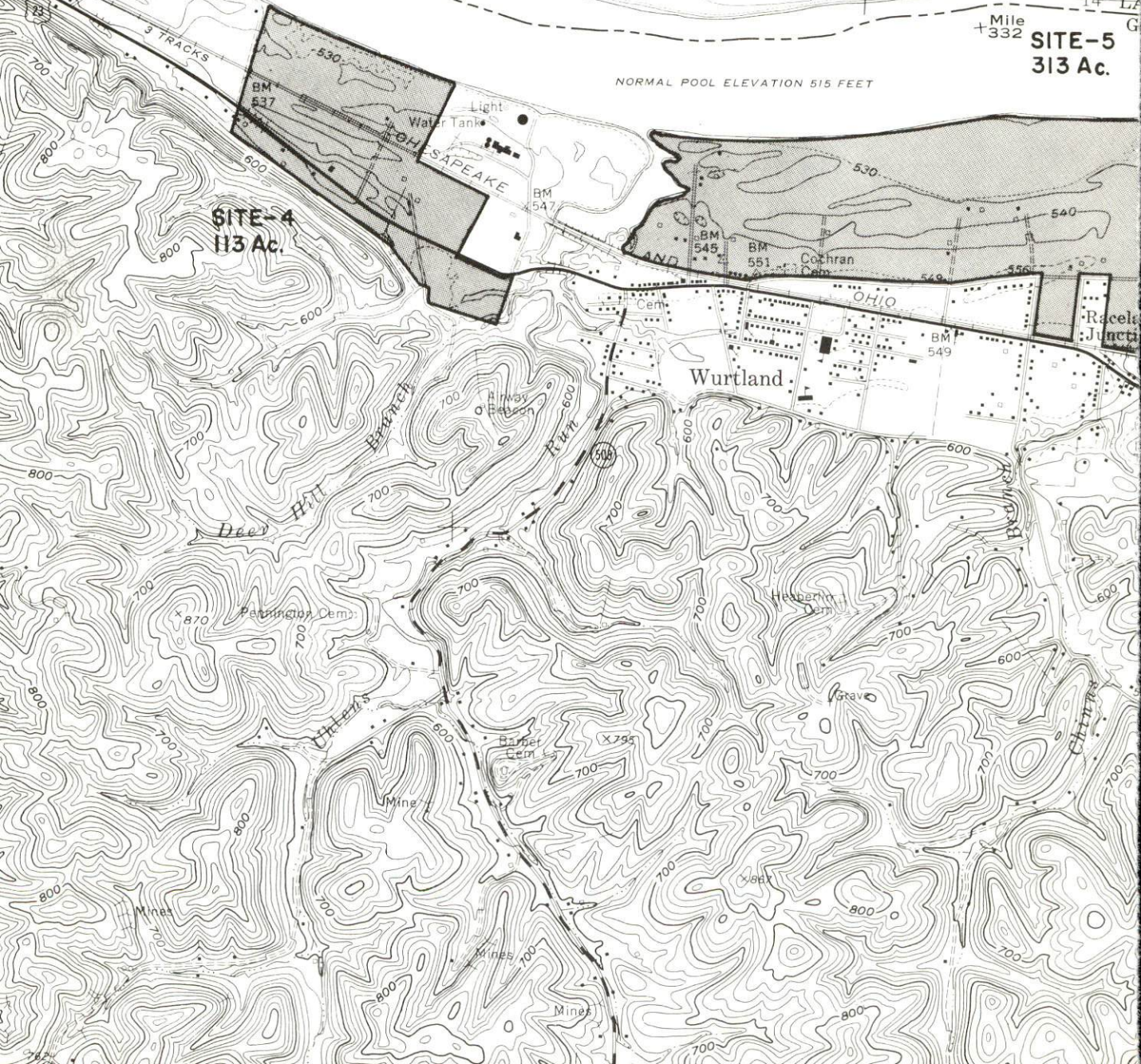
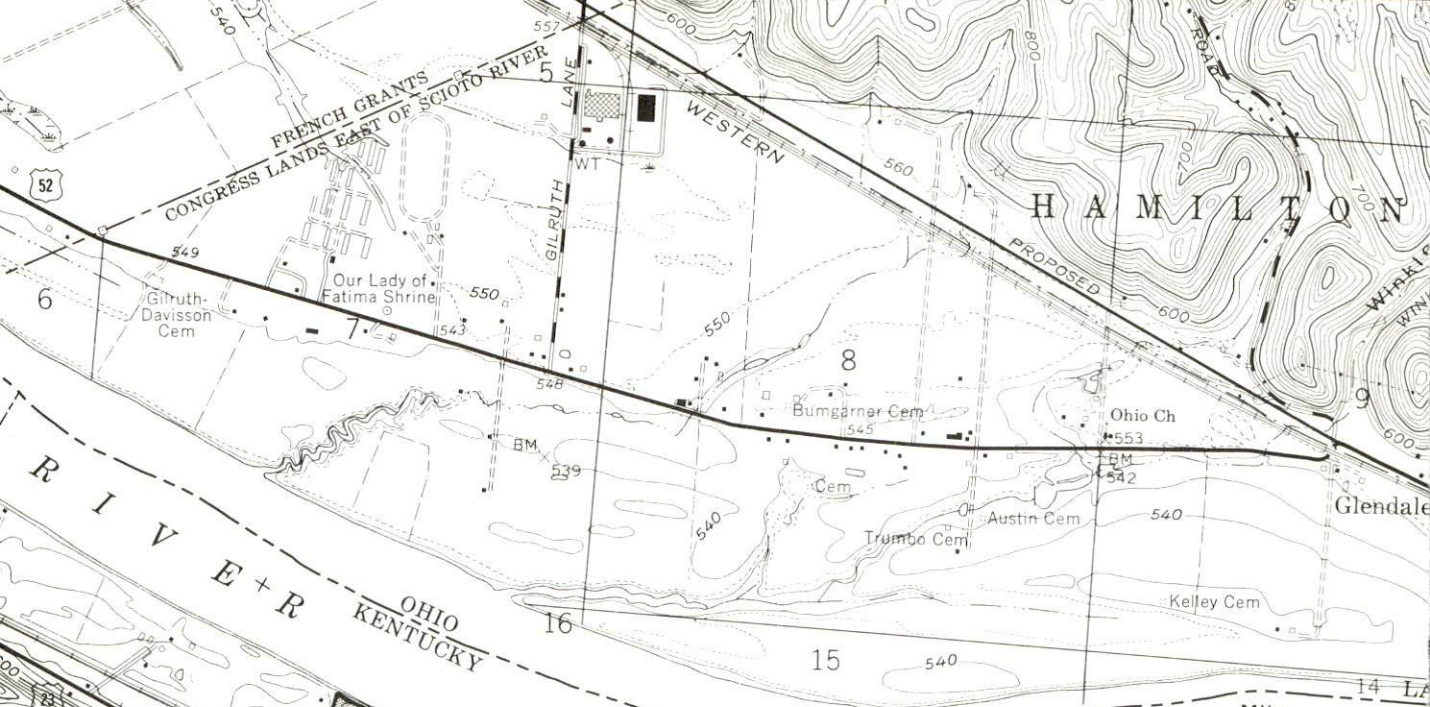
# GREENUP COUNTY INDUSTRIAL SITES

1972

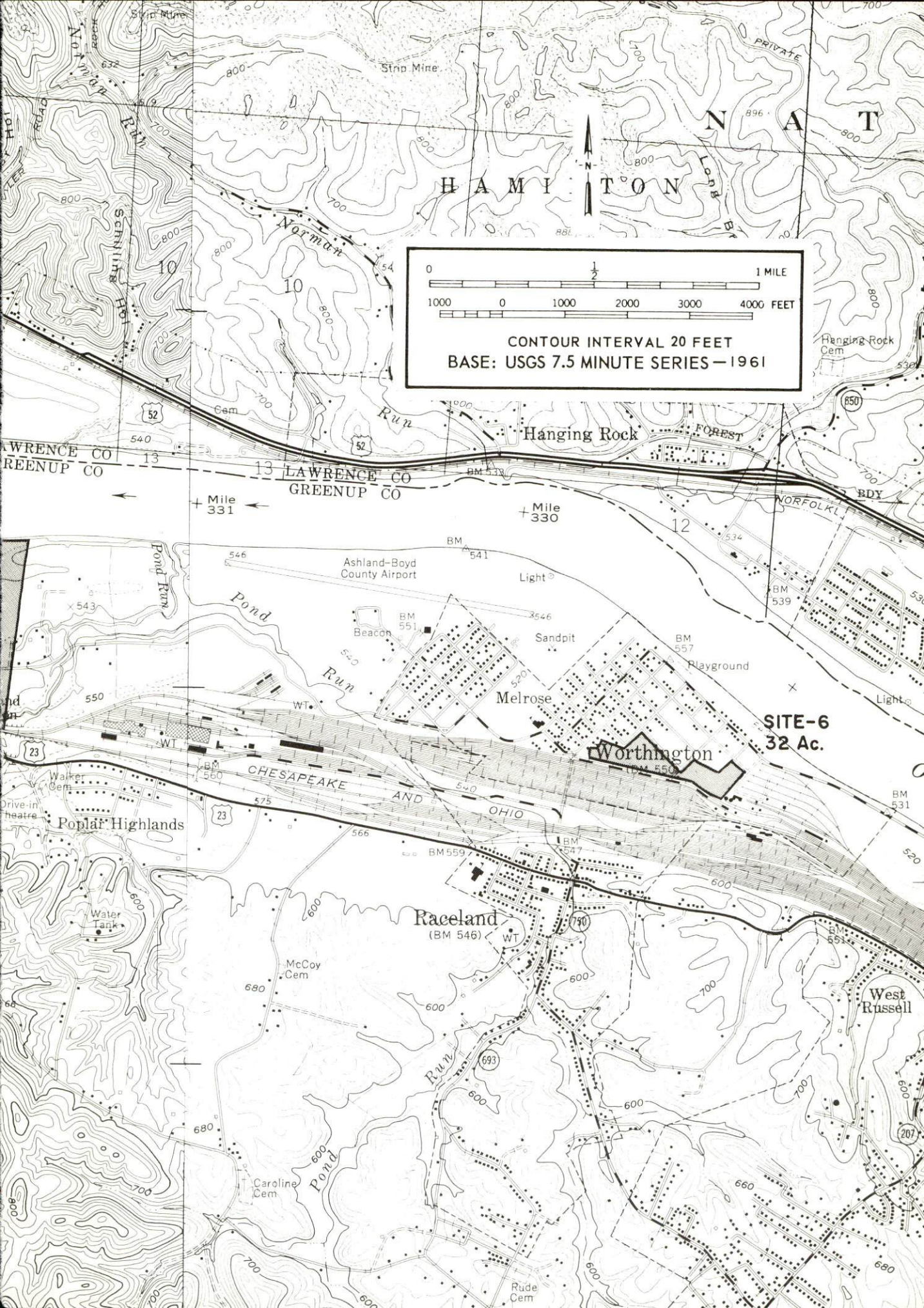
For more information about the following sites, contact Mr. Billy Reed Allen, Greenup, Kentucky; or the Kentucky Department of Commerce, Frankfort, Kentucky.

- SITE #1:** ACREAGE: 388 acres  
 LOCATION: Approximately 1 mile east of South Shore  
 HIGHWAY ACCESS: U.S. 23 bounds site on the south.  
 RAILROADS: Chesapeake and Ohio Railway crosses the southern boundary.  
 WATER: South Shore Water Works Company  
 SIZE LINE: 8-inch line along U.S. 23 at south boundary  
 GAS: Columbia Gas of Kentucky, Inc.  
 SIZE MAIN: 6-inch main along U.S. 23; 12-inch line along Tygarts Creek Road  
 ELECTRICITY: Kentucky Power Company  
 SEWERAGE: No sewerage system available  
 OWNERSHIP: Chesapeake and Ohio Railway Company
- SITE #2:** ACREAGE: 135 acres  
 LOCATION: Approximately 2 miles east of South Shore  
 HIGHWAY ACCESS: A county road leads from U.S. 23 to the site.  
 RAILROADS: Chesapeake and Ohio Railway bounds site on the south.  
 WATER: South Shore Water Works Company  
 SIZE LINE: 8-inch line along U.S. 23  
 GAS: Columbia Gas of Kentucky, Inc.  
 SIZE MAIN: 6-inch main along U.S. 23 and up to the southeast boundary  
 ELECTRICITY: Kentucky Power Company  
 SEWERAGE: No sewerage system available  
 OWNERSHIP: Chesapeake and Ohio Railway Company
- SITE #3:** ACREAGE: 119 acres  
 LOCATION: Approximately 3 miles east of South Shore  
 HIGHWAY ACCESS: Two county roads lead to U.S. 23 to the south.  
 RAILROADS: Chesapeake and Ohio Railway bounds site on the south.  
 WATER: South Shore Water Works Company  
 SIZE LINE: 8-inch line along U.S. 23  
 GAS: Columbia Gas of Kentucky, Inc.  
 SIZE MAIN: 6-inch main at Hooker Chemical Company; 3-inch main along U.S. 23  
 ELECTRICITY: Kentucky Power Company  
 SEWERAGE: No sewerage system available  
 OWNERSHIP: Chesapeake and Ohio Railway Company
- SITE #4:** ACREAGE: 113 acres  
 LOCATION: Approximately 1 mile west of Wurtland  
 HIGHWAY ACCESS: U.S. 23 crosses the southern portion of site.  
 RAILROADS: Chesapeake and Ohio Railway crosses center portion of site.  
 WATER: Wurtland Water District  
 SIZE LINE: 6-inch line at Uhlers Run Approximately 2,000 feet from site; proposed 12-inch line along U.S. 23  
 GAS: Columbia Gas of Kentucky, Inc.  
 SIZE MAIN: 12-inch main along U.S. 23  
 ELECTRICITY: Kentucky Power Company  
 SEWERAGE: Wurtland Water District; 8-inch line and sewage treatment plant 2,000 feet from site at Uhlers Run  
 OWNERSHIP: Kentucky Power Company
- SITE #5:** ACREAGE: 313 acres  
 LOCATION: At Wurtland  
 HIGHWAY ACCESS: Riverside Drive bounds site on the south. Intersection to U.S. 23 is very near the southwest boundary.  
 RAILROADS: Chesapeake and Ohio Railway bounds site on the southwest.  
 WATER: Wurtland Water District  
 SIZE LINE: 6-inch line along U.S. 23 and from U.S. 23 to property; proposed 12-inch line along U.S. 23  
 GAS: Columbia Gas of Kentucky, Inc.  
 SIZE MAIN: 6- and 2-inch main along Riverside Drive  
 ELECTRICITY: Kentucky Power Company  
 SEWERAGE: Wurtland Water District; 8-inch line along Riverside Drive  
 OWNERSHIP: Kentucky Power Company
- SITE #6:** ACREAGE: 32 acres  
 LOCATION: At Worthington  
 HIGHWAY ACCESS: City streets lead to Kentucky Route 244 which leads to U.S. 23  
 RAILROADS: Chesapeake and Ohio Railway has a spur entering the southeastern portion.  
 WATER: Worthington Water Works  
 SIZE LINE: 6-inch line along Prospect Street  
 GAS: Columbia Gas of Kentucky, Inc.  
 SIZE MAIN: 6-inch main along Riverside Drive; 10-inch main from U.S. 23 to property  
 ELECTRICITY: Kentucky Power Company  
 SEWERAGE: Worthington Water Works; 8- and 18-inch line at sewage treatment plant which is adjacent to the northeast boundary  
 OWNERSHIP: Chesapeake and Ohio Railway Company

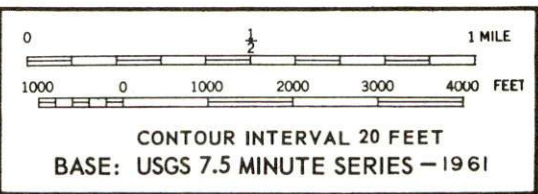
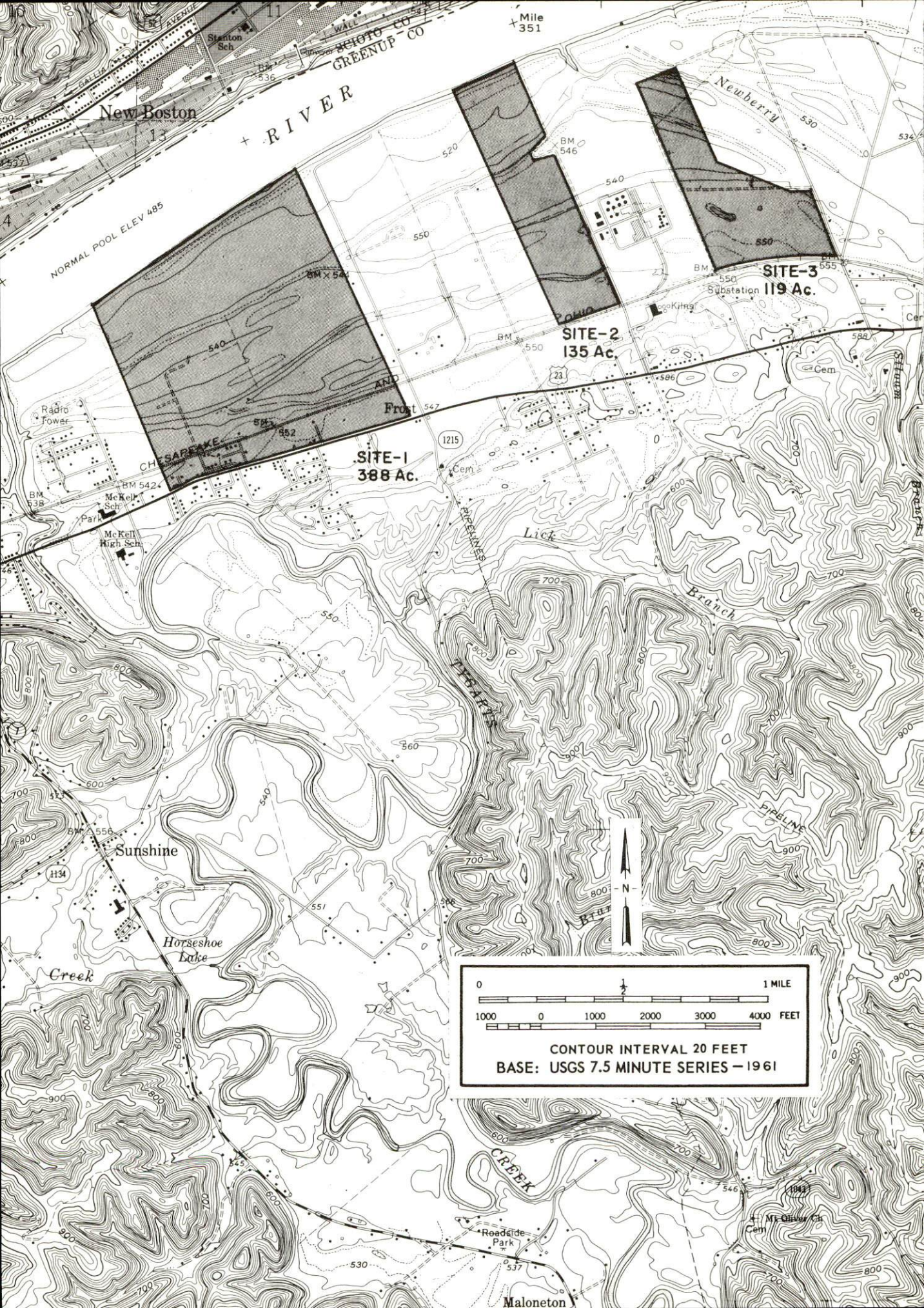




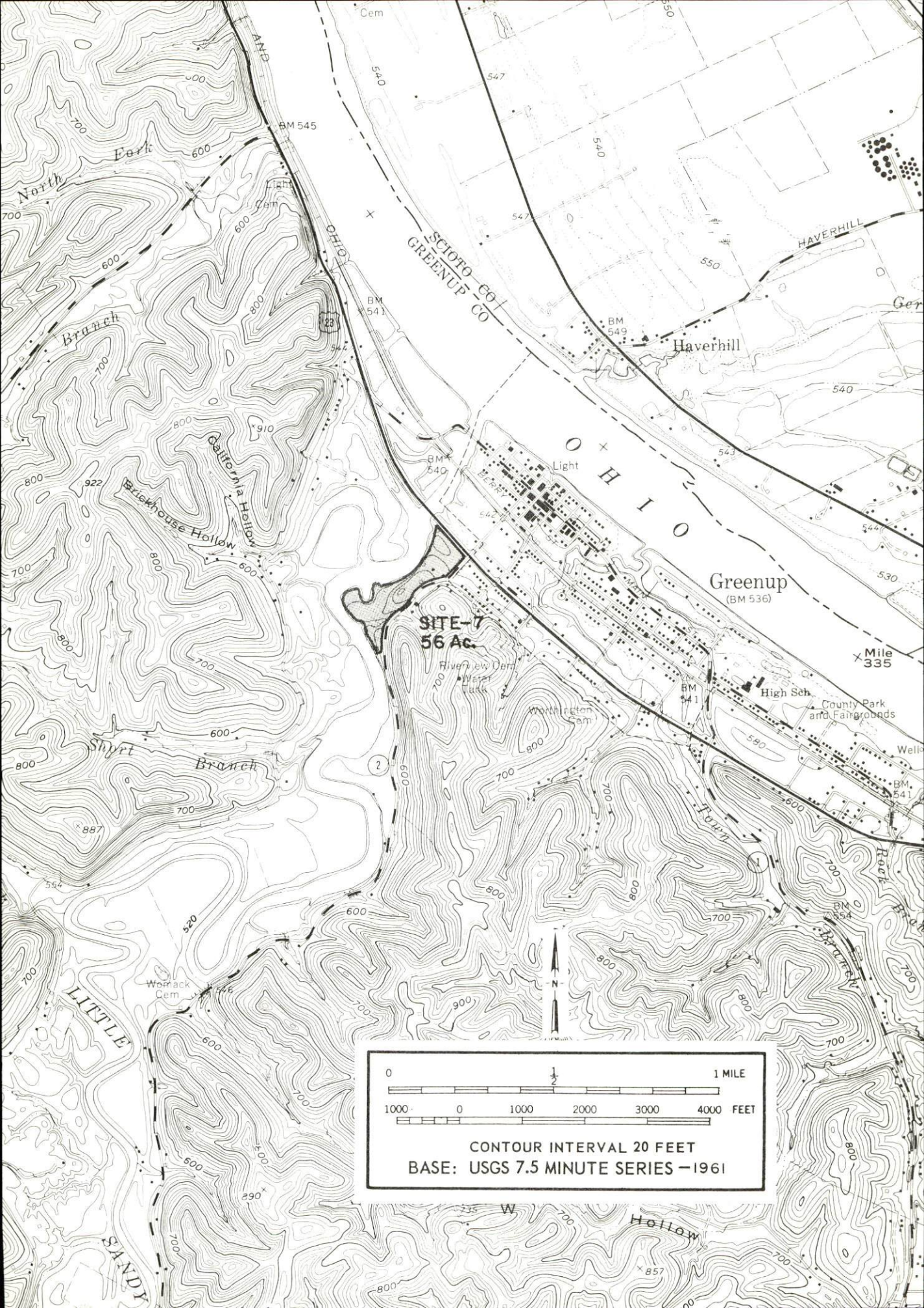














**SITE #7:** ACREAGE: Approximately 56 acres  
LOCATION: Southwest Greenup city limits

HIGHWAY ACCESS: U. S. 23 bounds site on the north.

RAILROADS: Chesapeake and Ohio Railway located approximately 1,500 feet to the north across U. S. 23

WATER: Greenup Water Commission

SIZE LINE: 1-inch line along Kentucky Route 2; 2-inch on Perry Street; 6-inch on Main Street approximately 2,500 feet to north

GAS: Columbia Gas of Kentucky, Inc.

SIZE MAIN: 4-inch main along Kentucky Route 2; 12-inch main along U. S. 23 at north boundary

ELECTRICITY: Kentucky Power Company

SEWERAGE: Greenup Sewer Commission

SIZE LINE: Sewage treatment plant located approximately 2,000 feet to north across U. S. 23 and C&O Railway

OWNERSHIP: Private

**SITE #9:** ACREAGE: 50 acres

LOCATION: Approximately 4 1/2 miles northwest of Greenup

HIGHWAY ACCESS: U. S. 23 on west boundary; paved road bounds site on the north.

RAILROADS: Chesapeake and Ohio Railway crosses the western portion of the site.

WATER: Greenup Water Commission

SIZE LINE: Small line along U. S. 23

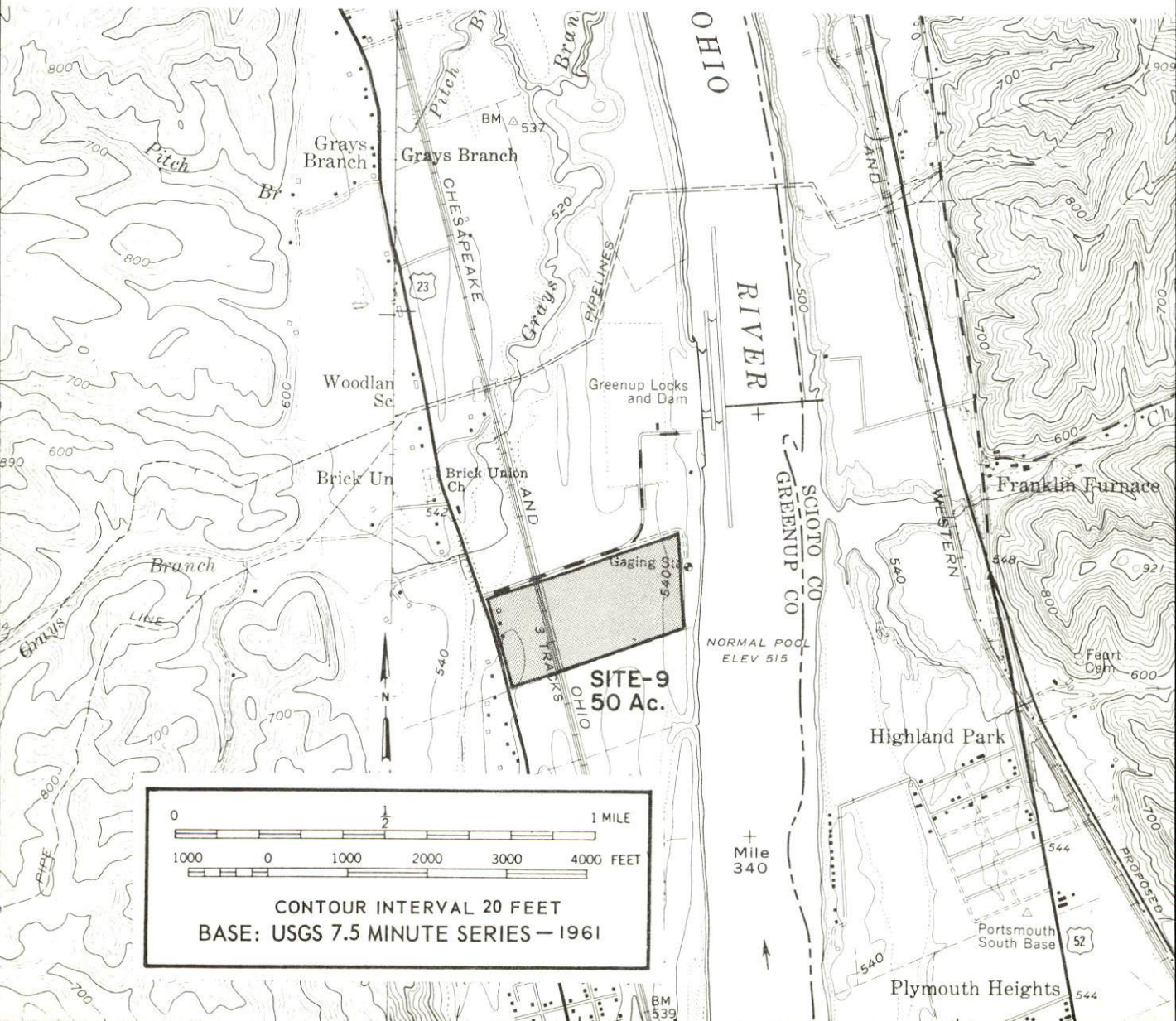
GAS: Columbia Gas of Kentucky, Inc.

SIZE MAIN: 12-inch main along the rail crossing site

ELECTRICITY: Kentucky Power Company

SEWERAGE: Greenup Sewer Commission

OWNERSHIP: Private





INDUSTRIAL RESOURCES  
GREENUP COUNTY, KENTUCKY

Prepared by  
The Kentucky Department of Commerce  
in cooperation with  
The Greenup County Industrial Foundation  
and  
The Greenup Development Association

1972



This copy has been prepared by the Kentucky Department of Commerce,  
Division of Research and Planning, and the cost of printing paid from  
state funds.



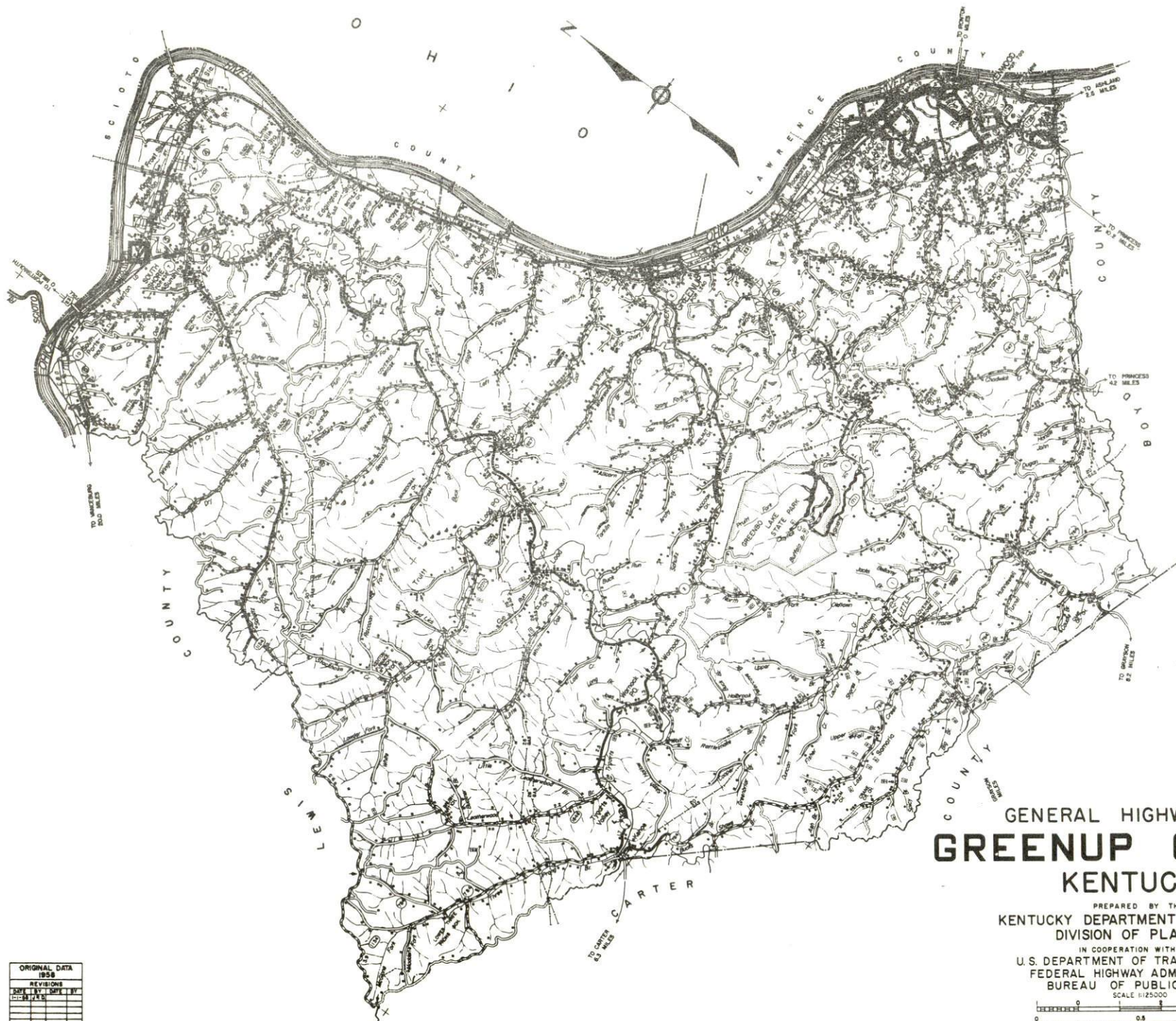
# TABLE OF CONTENTS

<u>Chapter</u>	<u>Page</u>
INDUSTRIAL SITES . . . . .	i
GREENUP COUNTY, KENTUCKY - A RESOURCE PROFILE. . . . .	1
THE LABOR MARKET. . . . .	5
Population Trends. . . . .	5
General Employment Characteristics . . . . .	5
Manufacturing Employment Trends by Industry. . . . .	6
Greenup County Manufacturing Firms . . . . .	6
Wage Rates for Selected Occupations . . . . .	7
Labor Organizations . . . . .	7
Current and Future Labor Supply. . . . .	8
Total Personal Income . . . . .	8
Per Capita Personal Income . . . . .	8
EDUCATION . . . . .	13
Public Schools . . . . .	13
Vocational Schools . . . . .	13
Colleges and Universities . . . . .	14
TRANSPORTATION. . . . .	15
Rail. . . . .	15
Truck Service . . . . .	15
Air . . . . .	16
Bus . . . . .	16
Taxi. . . . .	16
Rental Services. . . . .	16
Water Transportation . . . . .	16
POWER AND FUEL. . . . .	17
Electricity. . . . .	17
Natural Gas . . . . .	17
WATER AND SEWERAGE . . . . .	18
Water . . . . .	18
Sewerage . . . . .	21



<u>Chapter</u>	<u>Page</u>
LOCAL GOVERNMENT . . . . .	23
City. . . . .	23
County . . . . .	24
Assessed Value of Property - 1971 . . . . .	24
Local General Property Tax Rates Per \$100 of Assessed Valuation - 1971 . . . . .	24
Planning and Zoning. . . . .	25
Safety. . . . .	26
Police . . . . .	26
Fire. . . . .	26
Sanitation . . . . .	27
HEALTH . . . . .	29
Hospitals . . . . .	29
Nursing Homes. . . . .	29
Public Health . . . . .	29
OTHER LOCAL FACILITIES. . . . .	30
Communications . . . . .	30
Library Services . . . . .	30
Religious Institutions . . . . .	31
Financial Institutions . . . . .	31
Hotels and Motels. . . . .	31
Clubs and Organizations. . . . .	31
RECREATION . . . . .	32
Local . . . . .	32
Area . . . . .	32
AGRICULTURE - NATURAL RESOURCES - CLIMATE . . . . .	34
Agriculture . . . . .	34
Natural Resources . . . . .	34
Climate . . . . .	34
HISTORY . . . . .	35

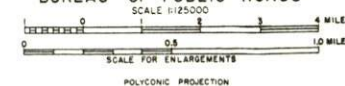




# GENERAL HIGHWAY MAP **GREENUP COUNTY** KENTUCKY

PREPARED BY THE  
 KENTUCKY DEPARTMENT OF HIGHWAYS  
 DIVISION OF PLANNING

IN COOPERATION WITH THE  
 U.S. DEPARTMENT OF TRANSPORTATION  
 FEDERAL HIGHWAY ADMINISTRATION  
 BUREAU OF PUBLIC ROADS

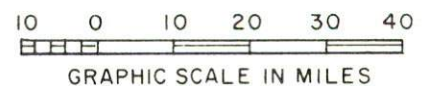
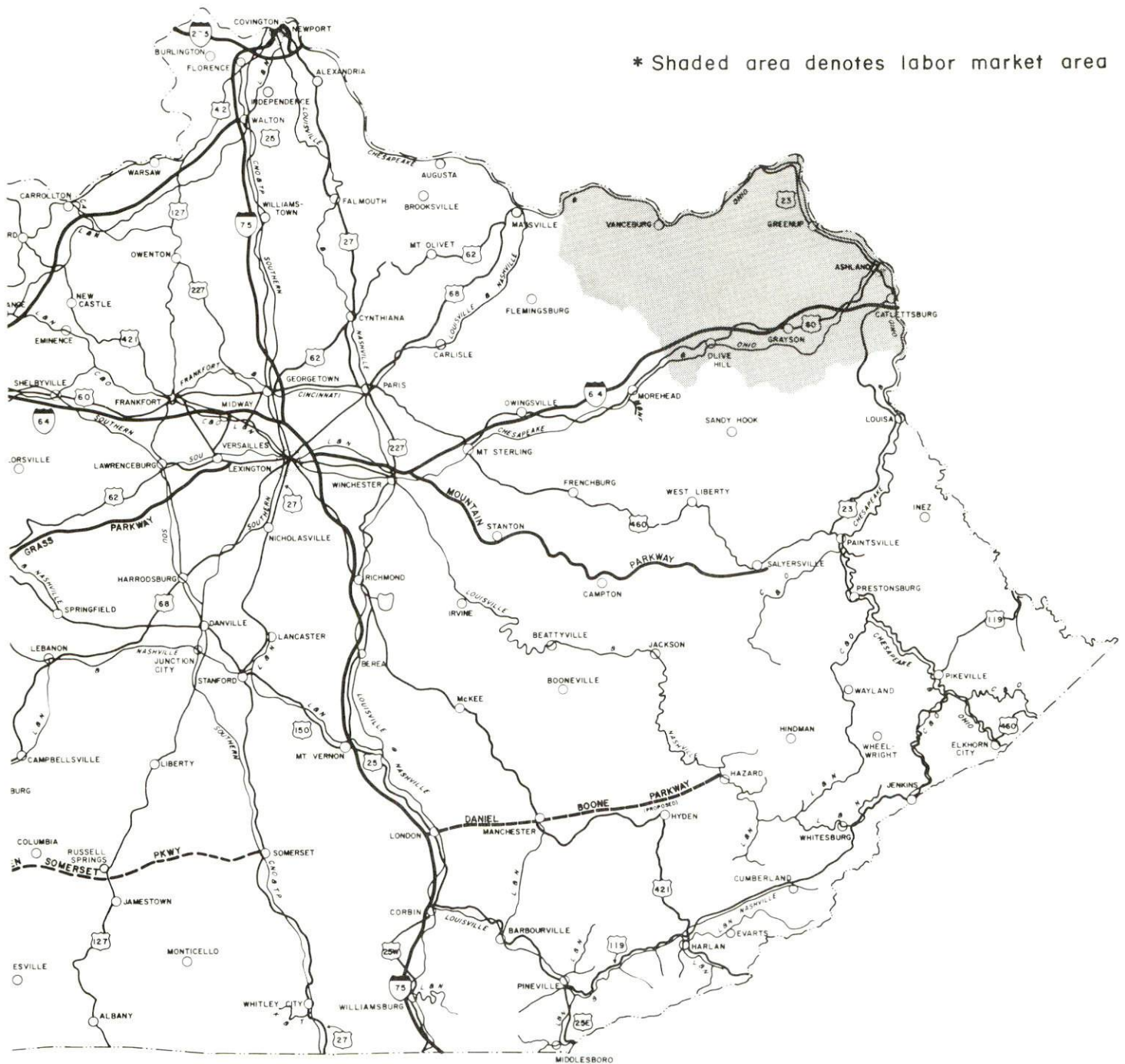


ORIGINAL DATA	1958
REVISIONS	DATE BY



# GREENUP COUNTY LABOR MARKET AREA

\* Shaded area denotes labor market area





## GREENUP COUNTY, KENTUCKY - A RESOURCE PROFILE

### Location

Greenup County is located along the Ohio River in northeastern Kentucky. It is bordered by Boyd, Carter, and Lewis Counties on the south and west and by Ohio on the north and east. The southeast portion of the county lies in an area of heavy industrialization which is located in the Ashland, Kentucky - Ironton, Ohio area. In addition, Huntington, West Virginia, is approximately 20 miles distant. The northern part of the county extends to Portsmouth, Ohio, while much of western Greenup County is rural, remote and scenic - the perfect setting for Greenbo Lake State Park.

Greenup County had a 1970 population of 33,192. Flatwoods is the largest city with a population of 7,380. The cities of Greenup, Raceland, Russell and Worthington all have populations of well over 1,000.

### The Economic Framework

Total employment in Greenup County averaged 5,400 in 1970, with government providing 900 jobs, trade and services over 625 jobs, and manufacturing 500 jobs. Since 1960 manufacturing employment has increased by 300 jobs or 118 percent. The employment figures do not include the 4,725 employees of Armco Steel Corporation, for although a great portion of the production facilities are physically located in Greenup County, employment figures are listed for Boyd County. Major industrial products are refractory and chemical products.

Per capita income in the county in 1969 was \$1,480. Between 1959 and 1969, per capita personal income in the county increased by approximately 47 percent.

The Greenup County labor market area includes Greenup and the three surrounding Kentucky counties. The labor market area employment averaged 38,300 jobs in 1970, including 10,300 manufacturing jobs. Area industrial employment has increased by over 40 percent since 1960, with the sharpest gains in the primary metals and chemical industries.

Despite important industrial gains in recent years, the area still has a deficit of over 750 manufacturing jobs when measured against the national industrial employment-population ratio. This indicates an area where the potential for additional manufacturing is good.



## Resources for Growth

1. There is a current estimated labor supply of 3,900 men and 4,375 women available for industrial jobs in the Greenup County labor market area not including the additional workers that would commute from the nearby Ohio and West Virginia counties. In addition, 6,600 young men and 6,300 young women will become 18 years of age by 1978 and potentially available for employment.

2. Local water, rail, and air transportation is excellent. Barges carry cargo on the Ohio River. Likewise, the area is a rail center for the Appalachian region. The Chesapeake and Ohio Railway maintains a large car shop and classification facility near Raceland. The Chesapeake and Ohio Railway tracks lie along the southern shore of the Ohio River while the Norfolk and Western Railway tracks stretch along the northern shore. Commercial air service is available in both Portsmouth, Ohio, and Kenova, West Virginia, only minutes away. Although the Ashland-Boyd County Airport does not have scheduled air service, the runway is capable of accommodating small jet aircraft. The Greenup County area is connected to the state's highway network and Interstate 64 via U. S. Highway 23, which is partly four-lane.

3. Electricity and water supplies are available in large quantity. Natural gas service is provided by Columbia Gas of Kentucky, Inc.

4. Industrial sites - Greenup County has eight sites available for industrial use.

5. Education - Greenup County has three school systems. The Ashland Area Vocational School is located only 14 miles away from Greenup, in Ashland. A vocational extension center is located in South Shore.

Greenup County is located within 50 miles of two senior colleges and three university extension colleges. Marshall University is located in Huntington, West Virginia, approximately 20 miles distant, and Morehead State University is located in Morehead, Kentucky, 50 miles from Greenup. Ashland Community College, an extension of the University of Kentucky, is located in neighboring Boyd County, while two extensions of Ohio University are located across the river in Ironton and Portsmouth, Ohio.

## Community Programs for Improvement

The communities of Greenup County have aggressively provided better and more modern facilities for their residents and increased their attractiveness to industry.



The Greenup County School System is constructing a central high school to replace three presently in use. The school system is implementing new courses and programs to provide its students with a high quality education.

At present, a new water supply system is in the planning stages for the communities of Greenup County. A feasibility study has been made on a system that would supply water from the Little Sandy at Greenup eastward to the communities of Greenup, Raceland, Russell, Bellefonte, Wurtland, and Worthington.

The Raceland-Worthington Independent School System has expanded its curriculum, and is now in the process of preparing an application for additional classroom space for 1972-73.

Raceland has underway a water and sewer extension program. Plans are being prepared for one or two subdivisions to be located adjacent to the city, which could be used to replace the loss of homes relocated by the upgrading of U. S. Highway 23.

The Russell Independent School System is increasing its number of buses to improve transportation service. The system is adding new courses and implementing new programs to provide more educational opportunities. All older buildings are being renovated and a new 4,500-square foot, \$73,000 high school library is under construction.

The Ashland Oil Company has opened a new office building in Russell. Ashland Drive has been constructed to handle the heavy flow of traffic and to prevent congestion in this area.

Bellefonte is planning to construct a new \$2,000,000 sewer system which will serve Bellefonte, the Kenwood portion of Russell, and the Ashland Plaza Shopping Center. Construction is planned to begin in 1972 on the 600,000 gpd treatment plant. The system is to be named Sanitation District Number One.

The City of Greenup is raising funds to build new lines and develop new wells for the water system. Plans are being made for a shopping center to be located at Greenup on U. S. Highway 23. Water and sewer lines will be extended to this site.

The City of Flatwoods has had several new subdivisions developed within the past two years. Also, a new upper level elementary school has been constructed. A new post office has been constructed and the old building is being used as a branch of the Greenup County Library. Federal



funds have helped to locate 50 units of public housing and five apartment buildings to be used as low-rent housing facilities. The Flatwoods Water Works will install two 500,000-gallon storage tanks. The city plans to extend and replace water and sewer lines.

The City of South Shore plans to locate 100 units of low-rent housing in the central area of town.

#### Recreation, Entertainment and Livability

A wide variety of recreational facilities are available in the Greenup County area. Boating and fishing are excellent along the Ohio and Little Sandy Rivers as well as numerous creeks which pass through the county.

Greenbo Lake State Park, a 3,300-acre park, is located in the western part of the county at the site of an early iron works in this area. A primary iron ore smelter is located in the park. Swimming, fishing, boating, picnics, and hiking are a few of the recreational activities available. Park facilities include a lodge, with dining room, pool and gift shop; beach and bathhouse; boat and motor rental, paddle boats and launching ramp; picnic shelter and playground; and camping facilities.

Two rustic and picturesque covered bridges are located in Greenup County.

Carter Caves State Resort Park, scene of the American Folk Song Festival each year, and the Grayson Lake State Park are within easy driving distance of the communities of Greenup County.



# THE LABOR MARKET

## POPULATION TRENDS <sup>1/</sup>

Area	Population			Percent Change	
	1970	1960	1950	1960-70	1950-60
Flatwoods	7,380	3,741	N. A.	+97.3	-
Greenup	1,284	1,240	1,276	+ 3.5	- 2.8
Raceland	1,857	1,115	1,001	+66.5	+11.4
Russell	1,982	1,458	1,681	+35.9	+13.3
South Shore	676	658	N. A.	+ 2.7	-
Worthington	1,364	1,235	695	+10.4	+77.7
Labor Market					
Area	117,773	115,333	110,915	+ 2.1	+ 4.0
Greenup County	33,192	29,238	24,887	+13.5	+17.5
Boyd County	52,376	52,163	49,949	+ 0.4	+ 4.4
Carter County	19,850	20,817	22,559	- 4.6	- 7.7
Lewis County	12,355	13,115	13,520	- 5.8	- 3.0

## GENERAL EMPLOYMENT CHARACTERISTICS, 1970 <sup>2/</sup>

Major Employment Group	Employment	
	Greenup County	Labor Market Area
TOTAL	5,400	38,300
Agricultural	400	2,300
Nonagricultural	5,000	36,000
Manufacturing	500	10,300
Trade and Services	637	7,710
Government	900	4,100
Contract Construction	131	2,130



MANUFACTURING EMPLOYMENT TRENDS BY INDUSTRY  
SEPTEMBER 1970 AND 1960 <sup>3/</sup>

Industry	Greenup County			Labor Market Area		
	1970	1960	% Change	1970	1960	% Change
TOTAL	554	254	+118.1	10,437	7,394	+ 41.2
Food & Kindred Products	0	4	-	246	269	- 8.6
Apparel, Textiles, Leather	0	0	-	1,313	908	+ 44.6
Lumber & Furniture	10	38	- 73.7	176	266	- 33.8
Printing, Publishing, Paper	5	5	-	250	153	+ 63.4
Chemicals, Petroleum, Coal, Rubber	242	51	+374.5	1,178	708	+ 66.4
Stone, Clay & Glass	297	156	+ 90.4	810	1,229	- 34.1
Primary Metals	0	0	-	5,786	3,701	+ 56.3
Machinery & Metal Products	0	0	-	676	158	+327.8
Other	0	0	-	2	2	-

GREENUP COUNTY MANUFACTURING FIRMS,  
THEIR PRODUCTS AND EMPLOYMENT <sup>4/</sup>

FIRM PRODUCTS AND EMPLOYMENT				
Firm	Product	Employment		
		Total	Male	Female
<u>Greenup</u>				
Adams Construction Corp.	Bituminous concrete	2	2	0
Greenup News	Newspaper	3	1	2
Edgiel Shepherd Lumber Co.	House, barn framing, crossties, lumber	3	3	0
<u>Russell</u>				
W. B. Modern Dairy, Inc.	Milk	17	15	2
Russell Publishing Co.	Newspaper, job printing	6	4	2
<u>South Shore</u>				
C. E. Refractories, Inc.	Fire clay, plastic refractories	30	30	0
Columbia Hydrocarbon	Fractionation plant	21	21	0
Chas. Taylor Sons, Co.	Special refractories	200	200	0
<u>Wurtland</u>				
E. I. Dupont de Nemours & Co. Plant #1	Sulfuric acid, water dispersed polymers	64	63	1
E. I. Dupont de Nemours & Co. Plant #3	Microfoam sheeting	50		



WAGE RATES FOR SELECTED OCCUPATIONS  
GREENUP, KENTUCKY <sup>5/</sup>

<u>Classification</u>	<u>Starting</u>	<u>Wages Per Hour</u>	
		<u>Maximum</u>	<u>Prevailing</u>
<u>Production Employees</u>			
Assembler	\$2.70	\$3.40	\$3.05
Inspector	2.70	3.40	3.05
Production Laborer	1.90	2.40	2.20
Welder, Arc or Acetylene (Class-A)	2.70	3.40	3.05
<u>Service Employees</u>			
Electrician (Class-A)	\$2.75	\$5.25	\$4.00
Laborer	1.60	3.35	2.10
Machinist	2.70	3.40	3.05
Mechanic, Maintenance	2.70	3.40	3.05
Truck Driver, Industrial (Class-A)	1.60	4.50	3.00
<u>Office Employees</u>			
Bookkeeper	\$1.60	\$2.50	\$1.90
File Clerk	1.60	2.50	1.90
Receptionist	1.60	2.00	1.75
Secretary	1.60	2.50	1.90
Typist	1.60	2.00	1.75

LABOR ORGANIZATIONS

Union

United Mine Workers of America  
The United Stone and Allied  
Products Workers of America  
United Steel Workers

Representing Workers at:

Raceland Car Shop (C & O RR)  
Charles Taylor Sons, Inc.,  
C. E. Refractories, Inc.  
Armco Steel Corporation

CURRENT AND FUTURE LABOR SUPPLY -  
GREENUP COUNTY LABOR MARKET AREA

Area	Current Labor Supply, 1971 <sup>6/</sup>			Future Labor Supply by 1978 <sup>7/</sup> (Becoming 18 years of Age)		
	Total	Male	Female	Total	Male	Female
Labor Market						
Area	8,288	3,918	4,370	12,917	6,606	6,311
Greenup	2,300	855	1,445	3,785	1,961	1,824
Boyd	2,562	966	1,596	5,515	2,767	2,748
Carter	2,567	1,469	1,098	2,185	1,141	1,044
Lewis	859	628	231	1,432	737	695

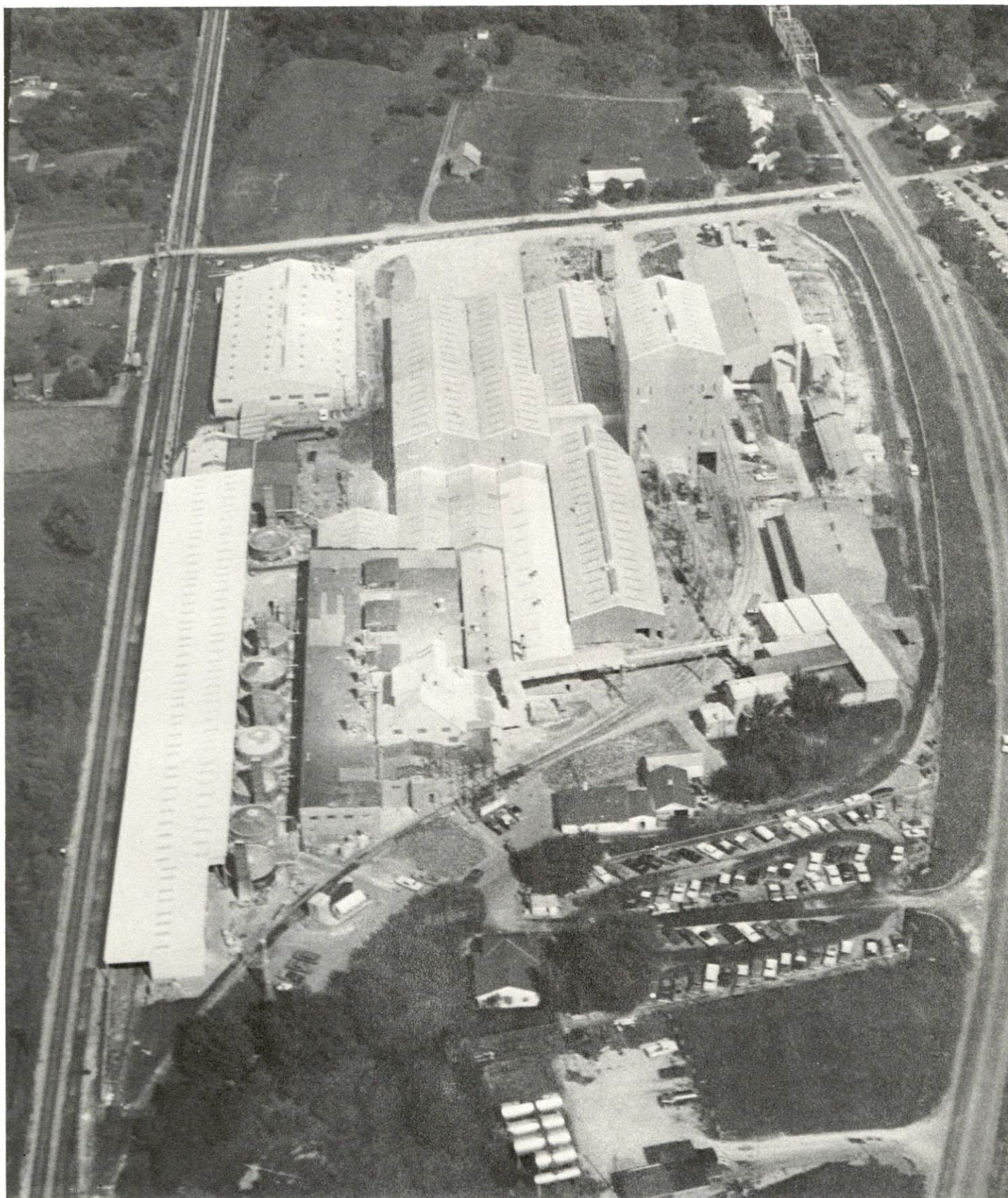
TOTAL PERSONAL INCOME <sup>8/</sup>

Area	1969	1959	% Change
Greenup County	\$ 50,742,000	\$ 27,111,000	+ 87.2
Labor Market Area	315,874,000	148,822,000	+112.2
Kentucky	9,202,000,000	4,655,000,000	+ 97.6

PER CAPITA PERSONAL INCOME <sup>9/</sup>

Area	1969	1959	% Change
Greenup County	\$1,480	\$1,004	+ 47.4
Labor Market Area	\$1,420 to 3,980	\$818 to 1,896	N.A.
Kentucky	2,847	1,552	+ 83.4





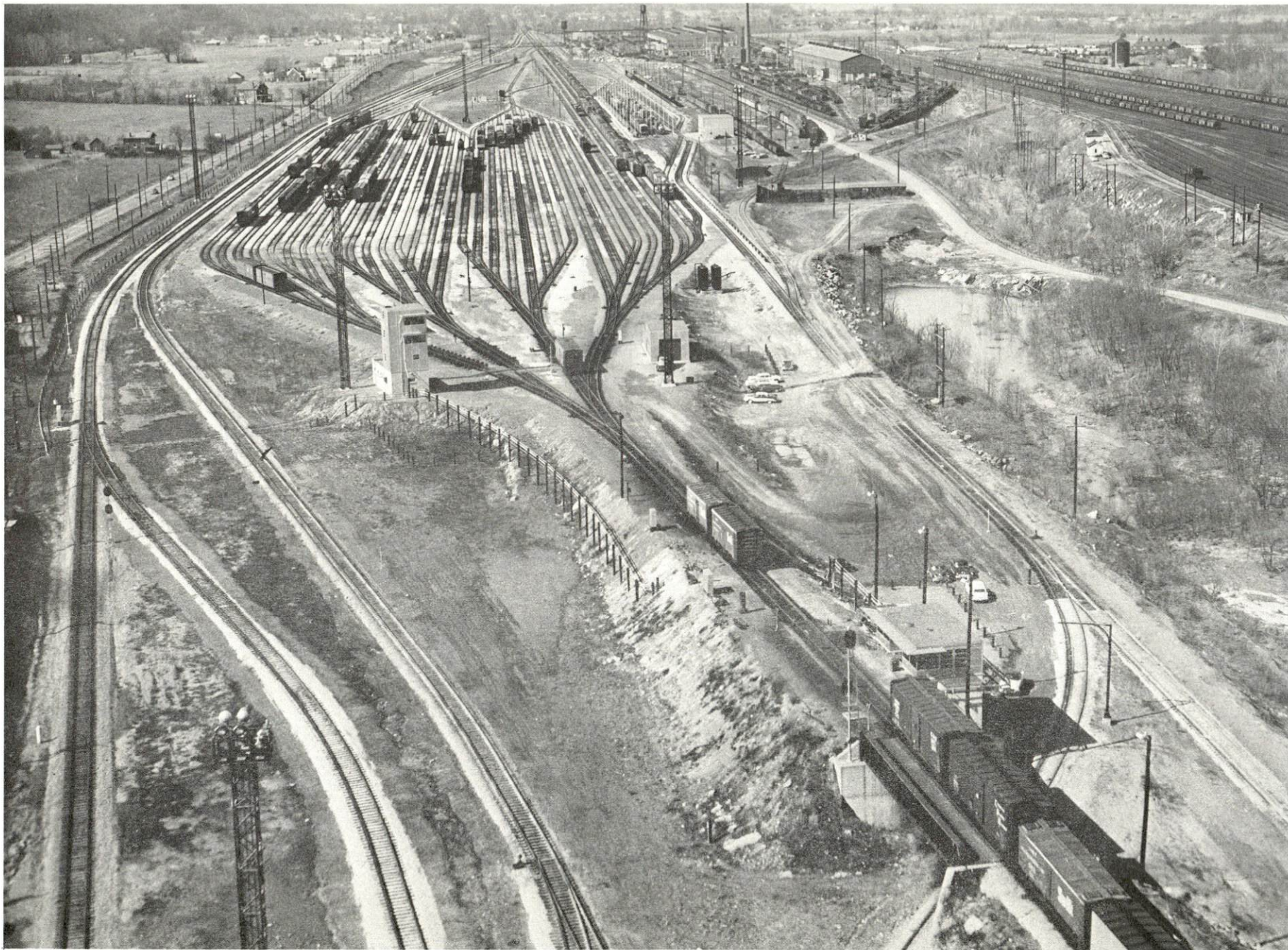
CHARLES TAYLOR SONS, INC.  
DIVISION OF NATIONAL LEAD CO.  
South Shore





ARMCO STEEL CORPORATION  
Ashland Division





FITZPATRICK YARD - Russell  
RACELAND CAR YARDS





ASHLAND OIL'S NEW EXECUTIVE HEADQUARTERS



## EDUCATION

### Public Schools

	<u>Raceland - Worthington Independent</u>	<u>Russell Independent</u>	<u>Greenup County</u>
Total Enrollment	959	3,307	4,683
Elementary	519	1,705	3,264
Middle School		556	
High School	440	1,046	1,419
Student-Teacher Ratio	25-1	26-1	23-1
Elementary	29-1	27-1	24-1
Middle School		26-1	
High School	21-1	25-1	22-1
State Rating of High School	1 Basic	1 Comprehensive	3 Basic
Other Accreditations		The Southern Association of Colleges and Schools	
Percent High School Graduates to College	30.8	38.1	26.7
Current Expenditures Per Pupil	\$425.27	\$431.04	\$419.95
Bonded Indebtedness June 30, 1971	\$504,000	\$2,144,000	\$1,463,000

### Vocational Schools

	<u>Nearest Area School</u>	<u>Nearest Extension Center</u>
Location	Ashland Area Vocational School	Greenup County Extension Center
Miles Distant	Ashland 14	South Shore
Curriculum	General Clerical, Secretarial Steno, Practical Nursing, Food Service, Electronics (Technology), Auto Body Repair, Auto Mechanics, Carpentry, Cosmetology, Drafting, Electricity, Machine Shop, Radio and TV Repair, Tool and Die Making, Welding	Horticulture, Accounting Jr. Management, General Clerical, Secretarial-Steno, Auto Mechanics, Carpentry, Drafting, Electricity

Colleges and Universities

<u>Name</u>	<u>Area - Within 50 miles</u>		<u>Highest Degree Conferred</u>
	<u>Location</u>	<u>Enrollment</u>	
Ashland Community College	Ashland	1,138	Associate
Morehead State University	Morehead	6,255	Masters
Marshall University	Huntington, West Virginia	9,476	Masters
Ironton Campus, Ohio U.	Ironton, Ohio	338	*
Portsmouth Campus, Ohio University	Portsmouth, Ohio	694	*

---

\* All degrees are conferred by Ohio University.



## TRANSPORTATION

### Rail

Line serving - Chesapeake and Ohio Railway

Services - Freight, siding space and switching. Passenger service is available at Huntington, West Virginia, 20 miles distant.

### RAILWAY TRANSIT TIME FROM GREENUP, KENTUCKY, TO: 10/

City	No. of Days		City	No. of Days	
	CL			CL	
Atlanta, Ga.	3		Los Angeles, Calif.	6	
Birmingham, Ala.	3		Louisville, Ky.	1	
Chicago, Ill.	1		Nashville, Tenn.	2	
Cincinnati, Ohio	1		New Orleans, La.	3	
Cleveland, Ohio	3		New York, N. Y.	3	
Detroit, Mich.	2		Pittsburgh, Pa.	3	
Knoxville, Tenn.	3		St. Louis, Mo.	3	

### Truck Service

<u>Company</u>	<u>Home Office</u>
Commercial Motor Freight, Inc.	Columbus, Ohio
Hogan Storage & Transfer Co.	Williamson, West Virginia
Miami Transportation Co.	Cincinnati, Ohio
O. K. Trucking Company	Cincinnati, Ohio
Point Express, Inc.	Charleston, West Virginia
Reinhardt's Transfer Co.	Portsmouth, Ohio
Smith's Transfer Corporation of Virginia	Staunton, Virginia

### HIGHWAY MILES AND TRUCK TRANSIT TIME IN DAYS FROM GREENUP, KENTUCKY, TO SELECTED MARKET CENTERS

City	Highway Miles	Delivery Time <u>11/</u>		City	Highway Miles	Delivery Time	
		LTL	TL			LTL	TL
Atlanta, Ga.	500	5	2	Los Angeles, Calif.	2,296	14	6
Birmingham, Ala.	528	5	2	Louisville, Ky.	189	2	1
Chicago, Ill.	496	2	1	Nashville, Tenn.	341	2	2
Cincinnati, Ohio	143	1	1	New Orleans, La.	879	5	2
Cleveland, Ohio	344	2	1	New York, N. Y.	660	5	2
Detroit, Mich.	412	2	1	Pittsburgh, Pa.	298	5	1
Knoxville, Tenn.	311	2	1	St. Louis, Mo.	453	5	2

## Air

	<u>Nearest Commercial</u>	<u>Nearest Commercial</u>
	Scioto County Airport	Tri-State Airport (Walker-Long Field)
Location:	Portsmouth, Ohio (20 miles distant)	Kenova, West Virginia (15 miles distant)
Runways:	1 asphalt	1 paved
Length:	4,200 ft.	5,280 ft.
Lighting:	Beacon, runway	Beacon, runway
Services:	Fuel 80/87, jet fuel, car rentals, taxi, major and minor repairs, restaurant, weather information, storage hangars, tiedowns, charter service, and Allegheny Airlines	Fuel 80/87, 100/130, jet fuel, courtesy car, limousine, taxi, major and minor repairs, weather information, restaurant, car rental, storage, hangars, tiedown, charter service, and Eastern, Allegheny and Piedmont Airlines

### Local

	Ashland-Boyd County Airport
Location:	Worthington, Kentucky
Runways:	1 paved
Length:	5,000 ft.
Traffic	
Control:	Tetrahedron
Lighting:	Sundown to sunrise
Services:	Gas and oil (80-100), A & E service, charter, flight instruction, storage

Bus Ohio Valley Bus Company; Continental Trailways Bus System

Taxi Flatwoods - Veterans Cab Company; Russell - City Cab Company

Rental Services Rental services available in Ashland, Kentucky, and Portsmouth, Ohio.

Water Transportation Nine-foot navigation is maintained on the Ohio River and on the Big Sandy River to a point south of Catlettsburg. Fourteen water terminals are privately operated on the Kentucky shores of these rivers in the Greenup County area.



## POWER AND FUEL

### Electricity

Company serving communities of Bellefonte, Flatwoods, Greenup, Kenwood, Raceland, Russell, South Shore, Worthington and Greenup County -  
Kentucky Power Company

Source of power - Kentucky Power Company

Total generating capacity - 1,080,000 KW

Industrial rates furnished by - Kentucky Power Company, Ashland, Kentucky

Company serving portions of Greenup County - Grayson RECC

Source of power - East Kentucky Power Cooperative

Total generating capacity - 548,000 KW

Industrial rates furnished by - Grayson RECC, Grayson, Kentucky

### Natural Gas

Company serving Greenup County - Columbia Gas of Kentucky, Inc.

Source of supply - Columbia Gas Transmission Company

Size of transmission lines - 12-inch (Supplier); 6- and 8-inch (Distributor)

Distribution lines - 2-inch and 6-inch

BTU content - 1,040;

Specific gravity - .59

Distribution pressure - 6 oz. - 45 psi

Rates - For industrial gas rates contact - Columbia Gas of Kentucky, Inc.,  
Post Office Box 1030, Ashland, Kentucky 41101.

## WATER AND SEWERAGE

### Water

Company serving Russell and Bellefonte - Russell Water Works

Source - 6 wells

Treatment plant capacity - 1,000,000 gpd

Average daily consumption - 700,000 gallons

Peak daily consumption - 1,000,000 plus gallons

Type treatment - chlorination, filtration, coagulation

Storage capacity - 1,500,000 gallons

Size mains - 12, 8, 6, and 4 inches

Average pressure - 120 psi

Average temperature - 16 degrees C

#### MONTHLY WATER RATES FOR WHOLESALE AND INDUSTRIAL CONSUMERS

---

First	3,000 gallons	\$1.70 per M gallons
Next	3,000 gallons	.80 per M gallons
Next	69,000 gallons	.60 per M gallons
Next	150,000 gallons	.55 per M gallons
Next	225,000 gallons	.48 per M gallons
Next	300,000 gallons	.46 per M gallons
Next	750,000 gallons	.45 per M gallons

Bulk - 39¢ per M gallons

Company serving Flatwoods and Kenwood - Flatwoods Water Works

Source - Purchases water from Russell Water Works

Type treatment - chlorination, filtration, coagulation

Size mains - 8, 6, and 4 inches

Average pressure - 45 to 50 psi

#### MONTHLY WATER RATES FOR WHOLESALE AND INDUSTRIAL CONSUMERS

---

First	2,000 gallons	\$5.42 Minimum
Next	1,000 gallons	.77 per M gallons
Over	3,000 gallons	.55 per M gallons



Company serving Raceland and West Russell - Raceland Water Works  
 Source - wells  
 Treatment plant capacity - 1,152,000 gpd  
 Average daily consumption - 173,500 gallons  
 Type treatment - chlorination and water softener  
 Storage capacity - 100,000 gallons  
 Size mains - 8, 6, and 4 inches  
 Average pressure - 80 psi

MONTHLY WATER RATES FOR WHOLESALE  
 AND INDUSTRIAL CONSUMERS

---

West Russell

First	2,000 gallons	\$4.32 Minimum
Next	1,000 gallons	.99 per M gallons
Next	20,000 gallons	.63 per M gallons
Next	150,000 gallons	.54 per M gallons
Over	173,000 gallons	.45 per M gallons

Raceland

First	2,000 gallons	\$5.78 Minimum
Next	1,000 gallons	.99 per M gallons
Next	20,000 gallons	.63 per M gallons
Next	150,000 gallons	.54 per M gallons
Over	173,000 gallons	.45 per M gallons

Company serving Worthington - Worthington Water Works  
 Source - ground wells  
 Treatment plant capacity - 288,000 gpd  
 Average daily consumption - 90,000 gallons  
 Peak daily consumption - 120,000 gallons  
 Type treatment - chlorination, filtration  
 Storage capacity - 200,000 gallons  
 Size mains - 6 inches  
 Average pressure - 70 psi  
 Average temperature - 58 degrees F

MONTHLY WATER RATES FOR WHOLESALE  
 AND INDUSTRIAL CONSUMERS

---

First	2,000 gallons	\$3.00 Minimum
Next	1,000 gallons	.99 per M gallons
Next	3,000 gallons	.87 per M gallons
Next	5,000 gallons	.70 per M gallons
Next	10,000 gallons	.50 per M gallons

Company serving Greenup - Greenup Water Commission  
 Source - 3 wells  
 Treatment capacity - 233,280 gpd  
 Average daily use - 230,400 gallons  
 Type treatment - chlorination  
 Storage capacity - 150,000 gallons  
 Size mains - 6, 4, 2, and 1 inches  
 Average pressure - 120 psi

MONTHLY WATER RATES FOR WHOLESALE  
AND INDUSTRIAL CONSUMERS

---

First	2,000 gallons	\$3.50 Minimum
Next	2,000 gallons	1.30 per M gallons
Next	4,000 gallons	1.00 per M gallons
Next	4,000 gallons	.70 per M gallons
Over	12,000 gallons	.50 per M gallons

Company serving South Shore - South Shore Water Works Company  
 Source - deep wells  
 Treatment plant capacity - 720,000 gpd  
 Average daily consumption - 275,000 gallons  
 Type treatment - chlorination  
 Storage capacity - 145,000 gallons  
 Size mains - 8, 6, and 4 inches  
 Average pressure - 74 psi  
 Average temperature - 58 degrees F

MONTHLY WATER RATES FOR WHOLESALE  
AND INDUSTRIAL CONSUMERS

---

First	1,000 gallons	\$2.50 Minimum
Next	9,000 gallons	1.28 per M gallons
Next	20,000 gallons	.75 per M gallons
Next	20,000 gallons	.50 per M gallons
Over	50,000 gallons	.35 per M gallons

Name of water district - Wurtland Water District  
 Area served - Wurtland  
 Date when water district began operating - December 1965  
 Source of raw water - 2 wells  
 Treatment capacity - 144,000 gpd  
 Type of treatment - chlorination, potash  
 Average daily use - 50,000 gallons  
 Storage capacity - 150,000 gallons  
 Average pressure - 70 psi  
 Size mains - 8, 6, and 3 inches



MONTHLY WATER RATES FOR WHOLESALE  
AND INDUSTRIAL CONSUMERS

---

First	2,000 gallons	\$4.25 Minimum
Next	2,000 gallons	1.75 per M gallons
Next	6,000 gallons	1.50 per M gallons
Next	10,000 gallons	1.25 per M gallons

Surface water sources - Ohio River

Average discharge - unlimited

Expected ground water yield - 500 to 1,000 gpm along the Ohio River;  
50 to 200 gpm in a small portion of eastern Greenup County; 5 to 50  
gpm over remainder of county.

Sewerage

Company serving Flatwoods - Flatwoods Water Works

Design population - 8,200

Treatment - Primary and secondary

Type treatment - chlorine contact tank, digester, drying beds,  
sludge pump

Treated effluent discharged into - Ohio River

Size of sanitary mains - 4, 8, 12, and 15 inches

Rates- First	2,000 gallons	\$3.80 Minimum
Next	1,000 gallons	.77 per M gallons
Over	3,000 gallons	.55 per M gallons

Company serving Raceland - Raceland Water Works

Design capacity - 200,000 gpd

Average daily flow - 150,000 gallons; Treatment - primary

Type treatment - chlorination, lime

Treated effluent discharged into - Pond Run Creek

Size of sanitary mains - 12 and 18 inches; Size of storm mains - 18,  
16, and 12 inches

Rates - no charge for sewer service

Company serving Worthington - Worthington Water Works

Design capacity - 200,000 gpd

Average daily flow - 90,000 gallons; Treatment - secondary

Type treatment - aeration and clarifier

Treated effluent discharged into - Ohio River

Size of sanitary mains - 8 and 10 inches; Size of storm mains - 12-inch

<u>Rates - Total Gallons</u>	<u>Total Cost</u>
2,000 gallons	\$2.85 Minimum
3,000 gallons	3.31
5,000 gallons	3.87
10,000 gallons	5.27
15,000 gallons	6.67
20,000 gallons	8.07
25,000 gallons	9.26
Over 25,000 gallons	.20 per M gallons

Company serving Wurtland - Wurtland Water District  
Design capacity - 100,000 gpd  
Maximum daily flow - 100,000 gallons; Treatment - primary and secondary  
Type treatment - aeration (mechanical)  
Treated effluent discharged into - Uhland's Branch  
Size of sanitary mains - 8, 10, and 12 inches  
Rates - 100 percent of monthly water bill

Company serving Greenup - City of Greenup Sewer Commission  
Design capacity - 200,000 gpd  
Average daily flow - 90,000 gallons; Treatment - primary and secondary  
Type treatment - aeration and clarifier  
Treated effluent discharged into - Little Sandy River  
Size of sanitary mains - 6 and 8 inches; Size of storm mains - 6, 8,  
and 12 inches  
Rates - 50 percent of monthly water bill

Company serving South Shore - Municipal  
Design capacity - 210,000 gpd  
Treatment - primary and secondary  
Type treatment - aeration and clarifier  
Treatment effluent discharged into - Ohio River  
Size of sanitary mains - 6 to 10 inches; Size of storm mains - 10 and  
18 inches

Rates -	0 to 1,500 gallons	\$2.40 Minimum
	1,500 to 10,500 gallons	1.00 per M gallons
	10,500 to 30,000 gallons	.50 per M gallons
	All over 30,000 gallons	.25 per M gallons



## LOCAL GOVERNMENT

### City

#### Bellefonte

Structure - Chairman, Board of Trustees - 2-year term; 4 trustees - 2-year terms

Budget, 1972 - General Fund \$14,675

#### Flatwoods

Structure - Mayor - 4-year term; 6 councilmen - 2-year terms

Budget, 1970 - General Fund \$113,030.24; Water and Sewer Fund \$389,426.98

Fees and licenses - Occupational, Unloading and Soliciting Licenses - \$25.00 annually

#### Greenup

Structure - Mayor - 4-year term; 6 councilmen - 2-year terms

#### Raceland

Structure - Mayor - 4-year term; 6 councilmen - 2-year terms

Budget, 1972 - General Fund \$3,071; Water and Sewer Fund \$6,775; Special Fund \$863; Street Fund \$481

Fees and licenses - Annual Unloading License - \$15 to \$195 annually

#### Russell

Structure - Mayor - 4-year term; 6 councilmen - 2-year terms

Budget, 1971 - General Fund \$118,888.87; Water Fund \$151,789.05

Fees and licenses - Business licenses range from \$10 to \$35 annually

#### South Shore

Structure - Chairman, Board of Trustees - 2-year term; 4 trustees - 2-year terms

Budget, 1972 - General Fund \$53,200; Water and Sewer Fund \$36,400

Fees and licenses - Business or occupational license - \$25 annually; trailer tax stickers - \$10 annually; automobile tax stickers - \$5 annually

Worthington

Structure - Mayor - 4-year term; 6 councilmen - 2-year terms

Budget, 1971 - General Fund \$10,000; Water and Sewer Fund \$20,000

County

Structure - County Judge - 4-year term; 1 magistrate - 4-year term

Budget, 1971-72 - General Fund \$207,442; Road Fund \$102,767

Assessed Value of Property - 1971

<u>Classes of Property *</u>	<u>Bellefonte</u>	<u>Russell</u>
Real Estate		\$11,243,570
Tangibles		1,489,505
Public Service	\$ 131,539	2,128,841
Real Estate & Tangibles	9,616,185	

	<u>South Shore</u>	<u>Worthington</u>	<u>Greenup County</u>
Real Estate	\$ 25,201,976		\$148,572,240
Tangibles			178,320,543
Public Service			50,466,732 (1970)
Real Estate & Tangibles		\$4,474,000	

Local General Property Tax Rates Per \$100 of Assessed Valuation, 1971 <sup>12/</sup>

<u>Taxing Unit**</u>	<u>Bellefonte</u>	<u>Flatwoods</u>	<u>Greenup</u>
State	\$ .015	\$ .015	\$ .015
County	.170	.170	.170
School	.601	.601	.601
City	.130	.250	.275
Total	\$ .916	\$ 1.036	\$ 1.061

<u>Taxing Unit</u>	<u>Raceland</u>	<u>Russell</u>	<u>South Shore</u>
State	\$ .0150	\$ .015	\$ .015
County	.1700	.170	.170
School	.8310	.707	.601
City	.1605	.275	.185
Total	\$ 1.1765	\$ 1.167	\$ .971

\*Property assessed at 100 percent of fair value.

\*\* Manufacturing machinery, raw materials inventories and goods in process inventories are not subject to local tax. State rate is only \$.15 per \$100.



<u>Taxing Unit *</u>	<u>Worthington</u>	<u>Greenup County</u>
State	\$ .015	\$ .015
County	.170	.170
School	.601	.601
City	.170	
Total	\$ .956	\$ .786

#### Planning and Zoning

##### Greenup County

Plans completed - Housing Element, Comprehensive Plan

##### Greenup

Plans completed - Existing Land Use Map, Base Map, Existing Land Use Analysis

##### South Shore

Plans completed - Subdivision Regulations, Base Map, Existing Land Use Map, Existing Land Use Analysis, Major Thoroughfare Plan

##### Worthington

Plans completed - Base Map, Existing Land Use Map, Zoning Ordinance, General Plan, Annexation, Capital Improvements Budget

##### Bellefonte

Plans completed - Base Map, Existing Land Use Map, Zoning Ordinance, General Plan, Annexation, Capital Improvements Budget

##### Flatwoods

Plans completed - General Plan, Annexation, Zoning Ordinance, Capital Improvements Budget, Major Street Plan, Base Map, Subdivision Regulations

---

\* Manufacturing machinery, raw materials inventories and goods in process inventories are not subject to local tax. State rate is only \$.15 per \$100.

# Safety

<u>Police</u>	<u>Flatwoods</u>	<u>Greenup</u>	<u>Greenup County</u>
Total staff	8 regular 3 extras	3	8
Radio-patrol cars	3		
Other equipment	base radio station serving Flatwoods, Worthington, Raceland, Russell, and Bellefonte police dispatchers	3 autos	6 autos

	<u>Raceland</u>	<u>Russell</u>	<u>South Shore</u>	<u>Worthington</u>
Total staff	3 regular 3 extras	4 regular 2 part-time	3	2
Radio-patrol cars	1	3	1	1
Other equipment			base radio station	jeep

<u>Fire</u>	<u>Flatwoods</u>	<u>Greenup</u>	<u>Raceland</u>	<u>Russell</u>
American Insurance Association Fire Rating	8	8	7	6 & 9
Volunteers	31	19	30	25
Equipment:				
1, 350 gpm pumper	1			
1, 000 gpm pumper	1			
750 gpm pumper				1
500 gpm pumper	1	1	1	1
Other	emergency equipment		fully equipped rescue truck	rescue unit
Resusitator		1	1	
1, 600-gallon tanker		1		
		2 portable pumps		



<u>Fire (Contd.)</u>	<u>South Shore</u>	<u>Worthington</u>	<u>Wurtland</u>
American Insurance Association Fire			
Rating	8 & 9	7	9
Volunteers	18	20	20
Equipment:			
1,500 gpm pumper	1		1
1,200 gpm pumper	1		
750 gpm pumper		1	
500 gal. portable pump	1		
150 gal. tank for brush fires		1	
2,000 gal. tanker	1		
500 gal. tanker	1		
Resusitator			1

### Sanitation

	<u>Bellefonte</u>	<u>Flatwoods</u>	<u>Greenup</u>
Type service	private	private	private
Cost			
residential	\$2 per wk.	\$2 per mo.	by contract
business	*	varies according to volume	by contract
Collection frequency			
residential	weekly	weekly	weekly
business	*	as needed	weekly to twice weekly
Trash pickup	special arrangement	weekly for residents; as needed for businesses	weekly
Disposal method	landfill	landfill	landfill
	<u>Raceland</u>	<u>Russell</u>	
Type service	private	private	
Cost			
residential	\$1.75 per mo.	by contract	
business	by contract	by contract	
Collection frequency			
residential	weekly	weekly	
business	weekly	as needed	
Trash pickup	included in garbage	as needed	
Disposal method	landfill	landfill	

\* No businesses are located in Bellefonte city limits.

Sanitation (Contd.)

	<u>South Shore</u>	<u>Worthington</u>
Type service	private	private
Cost		
residential	\$2 per mo.	\$1.75 per mo.
business	\$5 per mo. average	\$1.75 per mo.
Collection frequency		
residential	weekly	weekly
business	as needed	weekly
Trash pickup	weekly	weekly
Disposal method	landfill	landfill



## HEALTH

### Hospitals

<u>General Hospital</u>	<u>Location</u>	<u>Beds</u>
Our Lady of Bellefonte Hospital	Bellefonte	159
King's Daughters' Hospital	Ashland	345

Our Lady of Bellefonte Hospital general hospital facilities - X-ray, surgery, outpatients, emergency, EKG, pharmacy, laboratory, and recovery rooms

Our Lady of Bellefonte Hospital medical staff - 17 doctors on the active staff, 19 doctors on the courtesy staff, 35 registered nurses, and 15 licensed practical nurses

King's Daughters' Hospital general hospital facilities - 7 operating rooms, recovery room, X-ray, laboratory, intensive care, cardiac care, dental surgery room, OB section

King's Daughters' Hospital medical staff - 48 doctors, 98 registered nurses, 40 licensed practical nurses, 14 orderlies, 10 nurses' assistants

### Nursing Homes

	<u>Number</u>	<u>Beds</u>
Personal care home	1	83

### Public Health

Facility - Greenup County Health Department

Staff - 1 receptionist, 1 clerk, 4 registered nurses, 1 sanitarian, and 1 health officer (part-time) shared with Carter County.

Budget, 1971-72 - \$25,590.81

## OTHER LOCAL FACILITIES

### Communications

Telephone - General Telephone Company of Kentucky  
Services - direct dialing and standard services

Telegraph - Western Union Telegraph  
Services - company has an office in Ashland

Postal - U. S. Post Offices	<u>Russell</u>	<u>Flatwoods</u>	<u>Raceland</u>
Class -	First	Second	First
Mail received -	4 times daily	3 times daily	2 times daily
Mail dispatched -	4 times daily	2 times daily	2 times daily
	<u>Worthington</u>	<u>Greenup</u>	<u>South Shore</u>
Class -	Third	Second	Second
Mail received	3 times daily	2 times daily	1 time daily
Mail dispatched -	2 times daily	2 times daily	1 time daily

Newspapers - The Greenup News  
Weekly and circulation - 3600  
The Times Trader  
Weekly and circulation - 4200

Radio - Stations received from - Ashland and Grayson, Kentucky; Ironton and Portsmouth, Ohio; Huntington, West Virginia

Television - Reception from - Huntington and Charleston, West Virginia

Kentucky Educational Television - Ashland transmitter - channel 25

### Library Services

Public Library - Greenup County Public Library, Greenup (headquarters)  
Circulation, 1970-71 - 250,000 volumes  
Services - Bookmobile, reference material, children's and adults' reading material, meeting room for groups, periodicals, film strips, films, paintings, story hour for children, phonographic records, recorder, tapes and inter-library loans  
Branches are located in Flatwoods and South Shore.



### Religious Institutions

Number of churches - approximately 100

Denominations - Baptist, Christian, Church of Christ, Church of God, Methodist, Pentecostal, Pilgrim Holiness, Presbyterian, Roman Catholic, Seventh Day Adventist

### Financial Institutions

<u>Bank</u>	<u>Statement as of December 31, 1971</u>	
	<u>Assets</u>	<u>Deposits</u>
First and Peoples Bank	\$23,166,618.87	\$20,666,972.38
<u>Savings and Loan Associations</u>	<u>Assets</u>	<u>Shared Accounts</u>
Russell Federal Savings and Loan Association	\$ 8,220,587.27	\$ 7,382,787.12
Home Federal Savings and Loan Association (June 30, 1971)	19,168,855.53	16,927,874.19

### Hotels and Motels

Total number - 3

Units - 61

### Clubs and Organizations

Business and Civic - Jaycees, Kiwanis, Lions, Optimist, Rotary, Greenup County Peace Officers Association

Fraternal - American Legion, Masonic Lodge

Women's - Eastern Star, Homemakers, Garden Clubs

Youth - Boy Scouts, Girl Scouts, Brownies, Cub Scouts, 4-H Club, Little League, Babe Ruth League, Pony League, YMCA, FHA, FFA, FTA, FBLA

## RECREATION

### Local

#### Greenup County Area

##### Public Recreation Facilities

Supervised program - all communities have summer programs

Parks - 4

Playgrounds - 17 (at school locations)

Tennis court - 1

Baseball diamonds - 4

Football fields - 5 (at school locations)

Other - 2 basketball courts, 3 boat docks, 2 public boat launching ramps

##### Private Recreation Facilities

Country club - 1

Golf courses - 2

Swimming pools - 4

Movie theaters - 2 (drive-in)

Bowling lanes - 1

Other - 1 roller rink

##### Tourist Attractions

Historic Covered Bridges

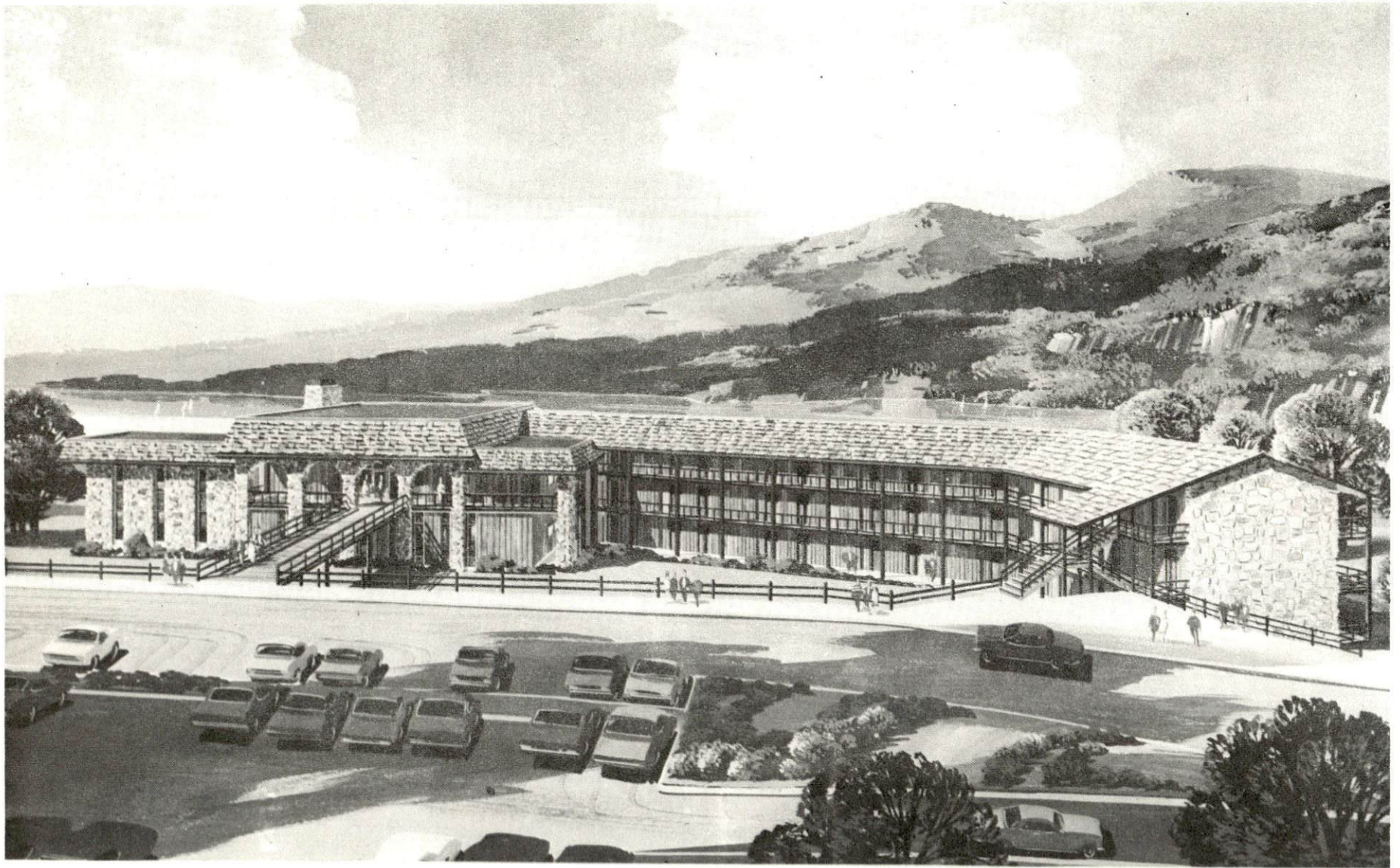
### Area (Within 35 miles)

Greenbo Lake State Park

Carter Caves State Resort Park - home of the American Folk Song Festival

Grayson Lake State Park





GREENBO LAKE STATE PARK LODGE

# AGRICULTURE - NATURAL RESOURCES - CLIMATE

## Agriculture 13/

	<u>Greenup County</u>	<u>Labor Market Area</u>
Total land area (acres)	224,640	895,360
Percent of area in farm land	47.3	56.0
Number of farms	930	4,006
Average size of farms (acres)	114.3	125.2
1964 value of all farm products	\$2,274,386	\$11,453,434
Value per farm	2,446	2,859
Total crop sales	1,200,976	6,304,811
Total livestock & livestock products	1,064,335	5,135,737
1969 agricultural production included:		
Burley tobacco (lbs.)	1,898,000	9,735,000
Corn (bu.)	192,000	827,000
Cattle and calves (number)	8,500	45,500
Hogs and pigs (number)	1,500	5,900
Milk production (1968) (lbs.)	4,545	51,195

## Natural Resources

Principal mineral resources	limestone, fire clay, and petroleum
Other mineral resources	coal, sand, and gravel
Acres of commercial forest land	154,900
Most abundant tree species	Red oak, white oak, hickory yellow pine, yellow poplar, beech, hard maple and soft maple

## Climate 14/

	<u>Greenup County</u>
Temperature	
Annual mean (30-year record)	55.0 degrees
Average annual 1970	54.8 degrees
Record highest August, 1918 (82-year record)	106 degrees
Record lowest February, 1899 (82-year record)	- 27 degrees
Seasonal heating degree-days (30-year record)	4,754
Precipitation	
Mean annual total (30-year record)	38.77 inches
Mean annual snow and sleet (82-year record)	24.20 inches
Total precipitation 1970	38.32 inches
Mean number days precipitation (.01 inch or more) (82-year record)	142
Average number days thunderstorms (76-year record)	44



## HISTORY

Greenup County is located in the northeastern part of Kentucky on the Ohio River and is adjacent to the City of Portsmouth, Ohio. It covers an area of 350 square miles. Little Sandy River and Tygart Creek flow across it and empty into the Ohio River. The land surface ranges from rich river bottoms to rolling and hilly areas, as it lies near the foothills of the Appalachian Mountains. About two-thirds of the area is forested.

Settlers first came to the Greenup County area in the mid-eighteenth century. South Portsmouth, formerly called Springfield, was settled at a site once occupied by Shawnee Indians and early French traders before any Englishmen came to Kentucky. Jesse Boone, one of Daniel Boone's brothers, settled near the town of Greenup, where his brother often visited him. Daniel carved the famous "D. Boone killed a bar" on a tree in this vicinity. By 1800 a mill, tannery, and store were operated at Old Town by John Womacks.

Greenup became Kentucky's forty-fifth county in 1803, its territory taken from Mason County. It was named for Christopher Greenup, who was a United States Congressman at the end of the eighteenth century and later became Kentucky's third Governor. Greenup, the county seat, is located on the Ohio and was incorporated in 1818 as Greenupsburg.

In 1810 Greenup County had 2,369 inhabitants. This grew steadily to 24,887 in 1950; 29,238 in 1960; and 33,192 in 1970. Flatwoods is the largest city, with a population of 7,380 in 1970. The towns of Greenup, Raceland, Russell, and Worthington all have populations of over 1,000.

Agriculture accounted for 400 of the county's 5,400 employed in 1970, with burley tobacco, corn, cattle, and milk the principal products. Manufacturing employment grew to 500 in 1970. Largest of the county's firms are Charles Taylor & Sons Company, making special refractory products and Industrial Metal Castings, which produces iron castings, and Hooker Chemical Company, which produces chemical coke. Portions of the Armco Steel Corporation's steel works are in Greenup County.

Tourist and recreational facilities are provided for the county at Greenbo Lake State Park.

The most prominent of Greenup County's sons is Jesse Stuart, Kentucky's famous poet and author. His works on life in eastern Kentucky include The Thread That Runs so True, Man With a Bull-Tongue Plow, and Taps for Private Tussie.

## SOURCES OF INFORMATION

- 1/ U. S. Department of Commerce, Bureau of the Census, Census of Population, 1950, 1960, 1970.
- 2/ Kentucky Department of Economic Security, Division of Research and Statistics.
- 3/ Kentucky Department of Economic Security, Number of Workers in Manufacturing Industries Covered by Kentucky Unemployment Insurance Law Classified by industry and County, September 1970 and September 1960.
- 4/ Kentucky Department of Commerce, 1971 Kentucky Directory of Manufacturers.
- 5/ Kentucky Department of Economic Security, Division of Employment Services, Ashland office.
- 6/ Kentucky Department of Economic Security, Kentucky Labor Supply Estimates by County, January 1971.
- 7/ Kentucky Department of Commerce, Future Labor Supply by 1978.
- 8/ University of Kentucky, Office of Development Services and Business Research, Total Personal Income for Kentucky.
- 9/ University of Kentucky, Office of Development Services and Business Research, Per Capita Income in Kentucky.
- 10/ The Chesapeake and Ohio Railway Co.; Huntington, West Virginia.
- 11/ The Reinhardt Transfer Company; Portsmouth, Ohio.
- 12/ Kentucky Department of Revenue.
- 13/ U. S. Department of Commerce, Bureau of the Census, Census of Agriculture, 1966. U. S. Department of Agriculture and Kentucky Department of Agriculture, Kentucky Agricultural Statistics, 1970.
- 14/ U. S. Department of Commerce, Environmental Science Services Administration, Climatological Data, 1970.

All other information was obtained from governmental offices, local businesses and organizations.