

1967

# Industrial Resources: Henderson County - Henderson

Kentucky Library Research Collection  
Western Kentucky University, [spcol@wku.edu](mailto:spcol@wku.edu)

Follow this and additional works at: [https://digitalcommons.wku.edu/henderson\\_cty](https://digitalcommons.wku.edu/henderson_cty)



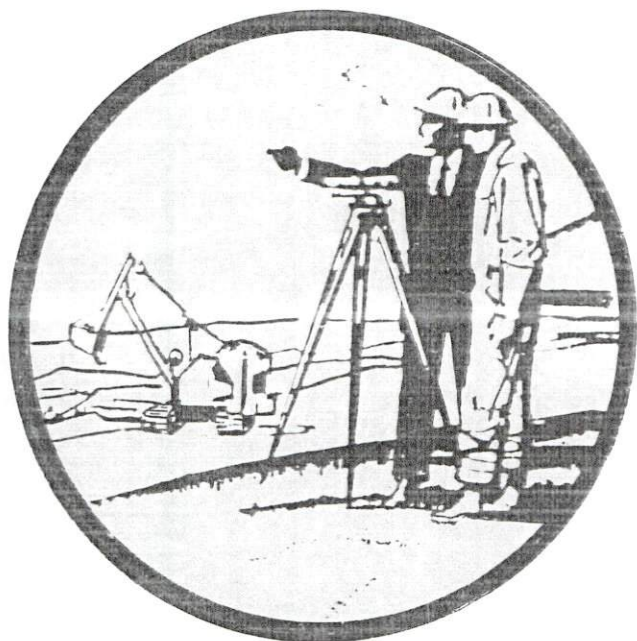
Part of the [Business Administration, Management, and Operations Commons](#), [Growth and Development Commons](#), and the [Infrastructure Commons](#)

---

## Recommended Citation

Kentucky Library Research Collection, "Industrial Resources: Henderson County - Henderson" (1967). *Henderson County*. Paper 15.  
[https://digitalcommons.wku.edu/henderson\\_cty/15](https://digitalcommons.wku.edu/henderson_cty/15)

This Report is brought to you for free and open access by TopSCHOLAR®. It has been accepted for inclusion in Henderson County by an authorized administrator of TopSCHOLAR®. For more information, please contact [topscholar@wku.edu](mailto:topscholar@wku.edu).

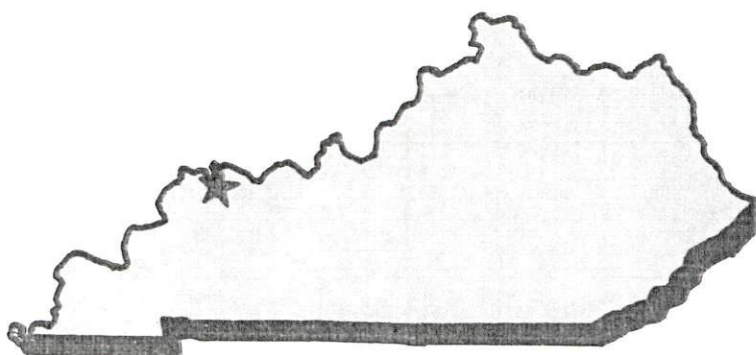


# YOUR GUIDE TO A

**KENTUCKY INDUSTRIAL SITE**

*Kentucky Library W-3*

**HENDERSON  
HAS THE  
LOCATION**



## HENDERSON, KENTUCKY

### POPULATION:

1960:	Henderson - 16,892	Henderson County - 33,519
1966:*	Henderson - 22,000	Henderson County - 35,000

### HENDERSON LABOR SUPPLY AREA:

Includes Henderson and all adjoining counties. Estimated number of workers available for industrial jobs in the labor supply area: 4,500 to 5,000 men and 3,100 to 3,600 women. Number of workers available from Henderson County: 900 to 1,000 men and 800 to 900 women.

The future labor supply will include 7,725 boys and 7,405 girls who will become 18 years of age by 1973.

### TRANSPORTATION:

Railroads: Rail transportation is provided to Henderson by the Louisville & Nashville Railroad and the Illinois Central Railroad.

Air: The nearest major airport, located in Evansville, Indiana, 9 miles distant, is served by Eastern, Delta, and Lake Central Airlines.

The Henderson Airport, located approximately 5 miles southwest of Henderson, will accommodate any single- or two-engine plane classified as light aircraft.

Water: Henderson is located on the Ohio River a short distance from the confluence of the Green and Ohio Rivers. Mead Johnson Terminal, located in Evansville, Indiana, is 9 miles from Henderson.

Trucks: There are 30 truck lines that provide interstate and intrastate service to Henderson. Seven truck lines have terminals located in Henderson.

---

\*1966 population estimate by city engineer.



Bus Lines: Bus service is provided to Henderson by Southern Greyhound Bus Lines, Inc., and the Evansville and Ohio Valley Bus Lines.

Highways: Major highway access to Henderson is by U. S. Routes 41 and 60. Completion of the Pennyrile Parkway and the Henderson-Owensboro Turnpike in 1968 will connect Henderson with all major interstates and parkways in the area.

#### UTILITIES:

Electricity: The Municipal Power & Light Department of Henderson serves the city from its steam generating plant. The plant has a firm power available of 22,500 kilowatts. To protect against a power interruption, the Department has established a hook-up with the Kentucky Utilities Company and the Big Rivers RECC, and a new 22,000 kilowatt addition will be completed in 1968.

Natural Gas: Henderson is served by the Municipal Gas Department, whose source of supply is Texas Gas Transmission Corporation. There are approximately 125 miles of mains ranging in size from 2 to 10 inches. Pressure is from 8 psi low to 100 psi high. The btu content is 1,000 with specific gravity maintained at .6. A new 6-inch main has been constructed to serve the Henderson Community College.

Public Water Supply: The Municipal Water Department, whose source of supply is the Ohio River, serves Henderson. Storage facilities for treated water consist of a 4,500,000-gallon steel tank and a 1,200,000-gallon clear well. A new treatment plant has a capacity of 6,000,000 gallons per day. The average daily use is 2,600,000 gallons and the peak daily use has been 3,200,000 gallons. Pumping capacity is 3,600 to 4,200 gpm with the average pumping time to meet requirements being 16 hours. Mains vary from 4 to 25 inches, and pressure is maintained from 45 to 50 psi. All mains from 8 to 24 inches were cleaned and relined in 1963 at a cost of \$246,000.

Sewerage System: The municipally owned sewerage system provides both primary and secondary treatment, with final discharge running into the Ohio River. Separate storm and sanitary sewers are provided with 8- to 48-inch mains. The disposal plant has a capacity of 7,200,000 gallons per day and the average daily flow is 1,600,000 gallons. Rates are 50 percent of the water bill.

HENDERSON-HENDERSON COUNTY INDUSTRIAL SITE # 1  
SITE SURVEY INFORMATION

SITE DESCRIPTION:

Total acreage: 34 acres remaining of a 50 acre park--86 acres  
adjoining this property under option

Location: Southwest of Henderson

Distance from city limits: Within; Type neighborhood: Agricultural

Proximity to residential property: One-half mile; Zoning: Heavy  
industry

Ownership: Henderson-Henderson County Industrial Foundation, Inc.

Cost: \$3,000 per acre; Terrain: Fairly level

Elevation: 385 to 390 feet; Highest known high water: 379 feet

Estimated grading cost: Nominal

Roadway access: Industrial access road

Type road, surface, width, etc.: Asphalt surface, 60 feet

Distance from arterial street or highway: Adjacent to U.S. 60

Railroads serving: Illinois Central Railroad

Location of line: On the property

Cost of extending to site: Dependent on the site chosen

Waterways: One-half mile from the Ohio River

Channel state: 338 feet (normal pool)

Distance to commercial airport: Dress Memorial Airport, Evansville,  
Indiana, 10 miles

Public transportation: City bus service on the property

Type soil: Brown and gray silty clay; Drainage: Good to southwest

SITE SURVEY INFORMATION - SITE # 1  
PAGE 2

Utilities:

Water:

Company: Municipal Water Department

Location and size mains: 12-inch

Pressure: 45 to 50 psi; Cost of extending to site: None to  
property line

Gas:

Company: Municipal Gas Department

Location of nearest lines: On property

Size: 6-inch; Pressure: 8 psi to 100 psi

Source: Texas Gas Transmission Corporation

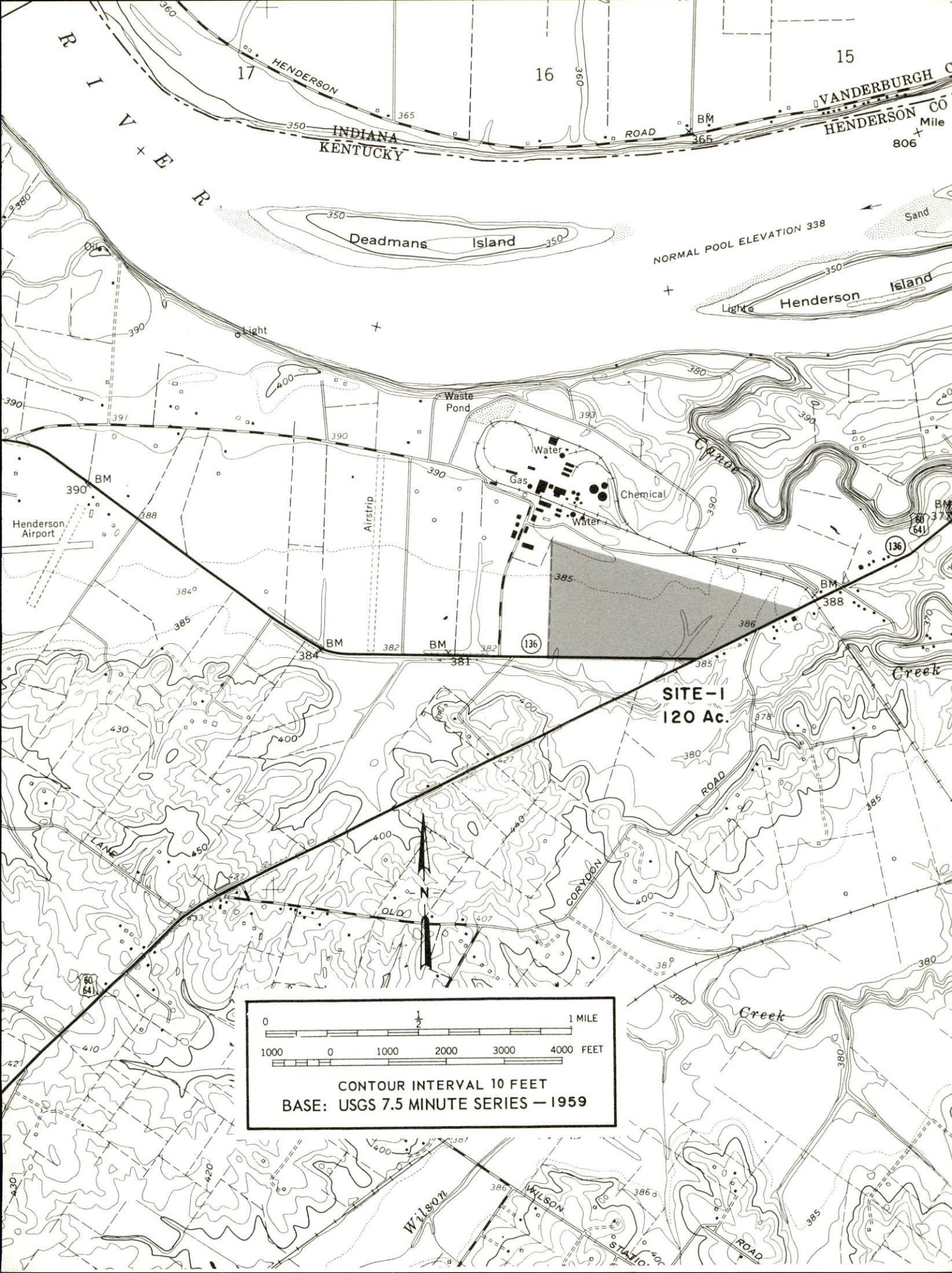
Cost of extending to site: None to property line

Electricity:

Company serving: Municipal Power & Light Department

Sewerage: Package plant on site





INDIANA  
KENTUCKY

VANDERBURGH CO  
HENDERSON CO  
806 Mile

Deadmans Island

Henderson Island

NORMAL POOL ELEVATION 338

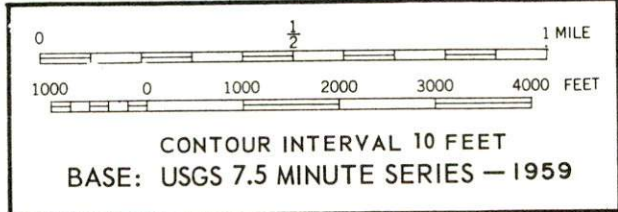
Henderson Airport

Waste Pond

Water

Chemical

SITE-1  
120 Ac.



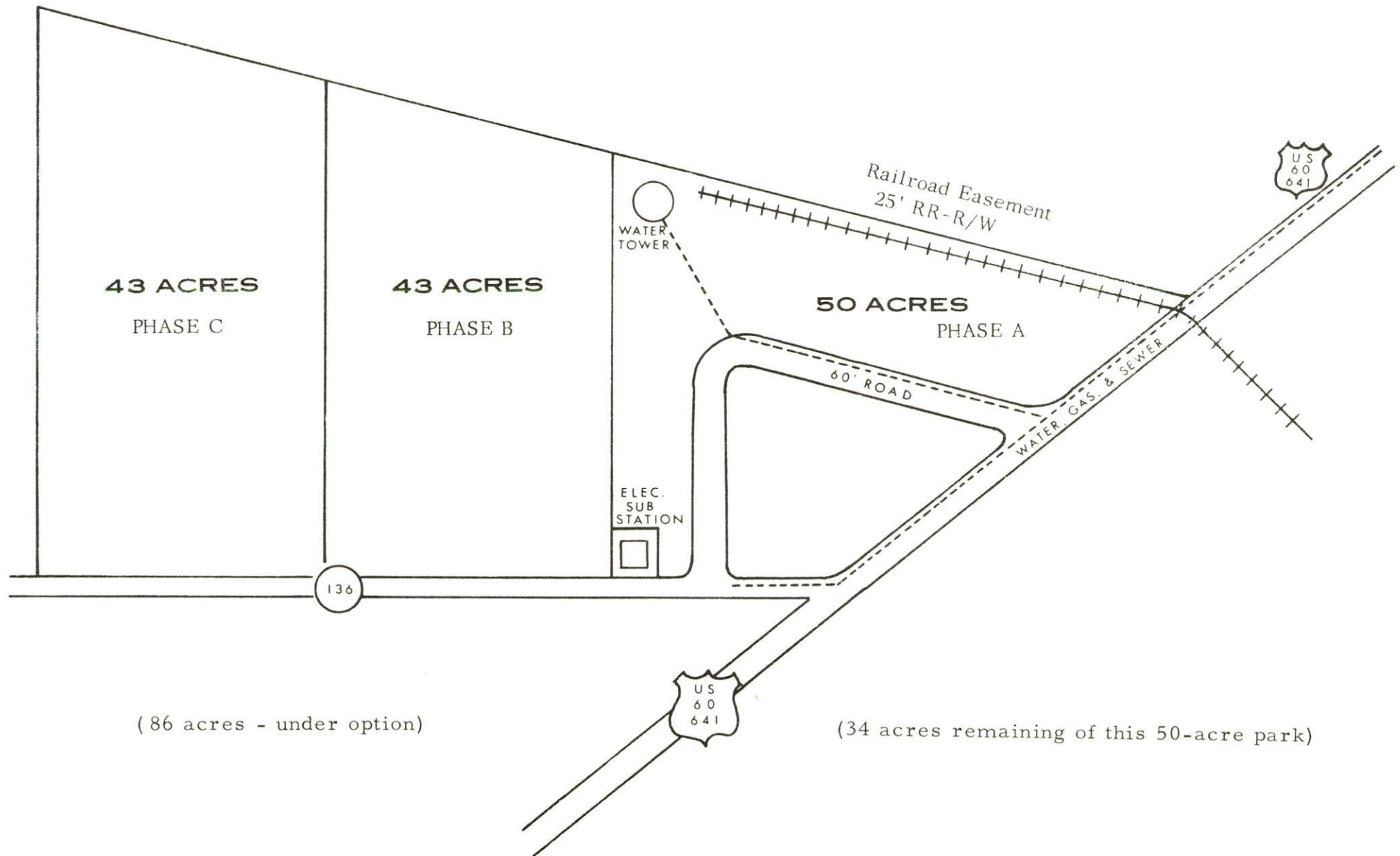
Wilson

WILSON

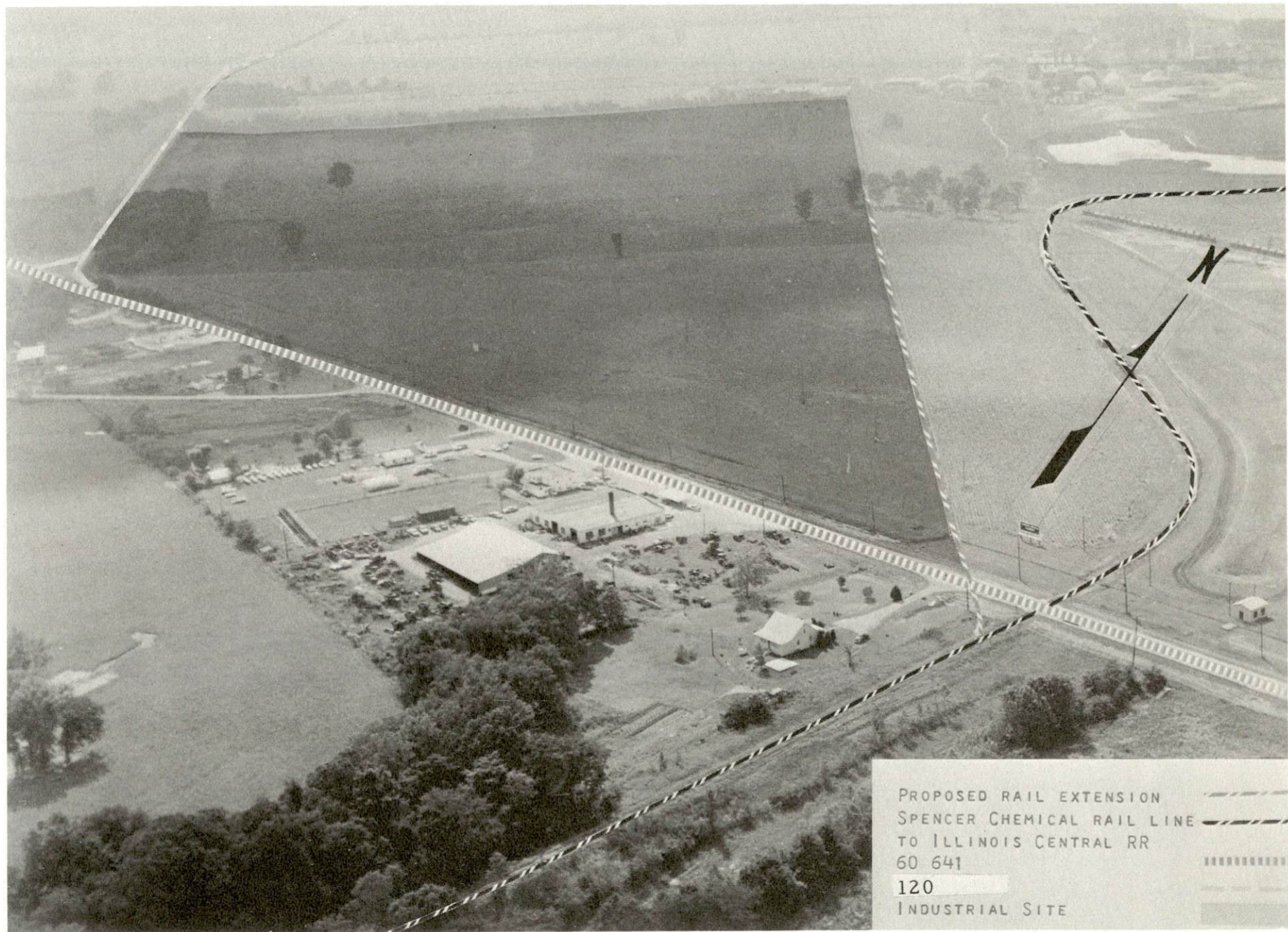
STAGIO



# HENDERSON INDUSTRIAL PARK DEVELOPMENT PLAN







PROPOSED RAIL EXTENSION  
SPENCER CHEMICAL RAIL LINE  
TO ILLINOIS CENTRAL RR  
60 641

120  
INDUSTRIAL SITE



HENDERSON-HENDERSON COUNTY INDUSTRIAL SITE # 2  
SITE SURVEY INFORMATION

SITE DESCRIPTION:

Total acreage: 40 acres remaining of a 60 acre park

Location: South of Henderson

Distance from city limits: Within; Type neighborhood: Agricultural

Proximity to residential property: One-fourth mile; Zoning: Heavy industry

Ownership: Henderson-Henderson County Industrial Foundation, Inc.

Cost: \$3,000 per acre; Terrain: Generally level

Elevation: 380 to 385 feet; Highest known high water: 379 feet

Estimated grading cost: Nominal

Roadway access: Industrial access road

Type road, surface, width, etc.: Asphalt surface, 50 feet wide

Distance from arterial street or highway: U.S. 41 fronts

Railroads serving: Louisville & Nashville Railroad

Location of line: Rear property line

Cost of extending to site: Dependent on site selected

Waterways: None

Distance to commercial airport: Dress Memorial Airport,  
Evansville, Indiana, 10 miles

Type soil: Silty clay; Drainage: Good

SITE SURVEY INFORMATION - SITE # 2  
PAGE 2

Utilities:

Water:

Company: Municipal Water Department

Location and size mains: 8-inch

Pressure: 60 psi; Cost of extending to site: None to property line

Gas:

Company: Municipal Gas Department

Location of nearest lines: On property

Size: 6-inch; Pressure: 8 psi to 100 psi

Source: Texas Gas Transmission Corporation

Cost of extending to site: None to property line

Electricity:

Company serving: Henderson-Union RECC

Sewerage: Package plant on site



**LEGEND:**

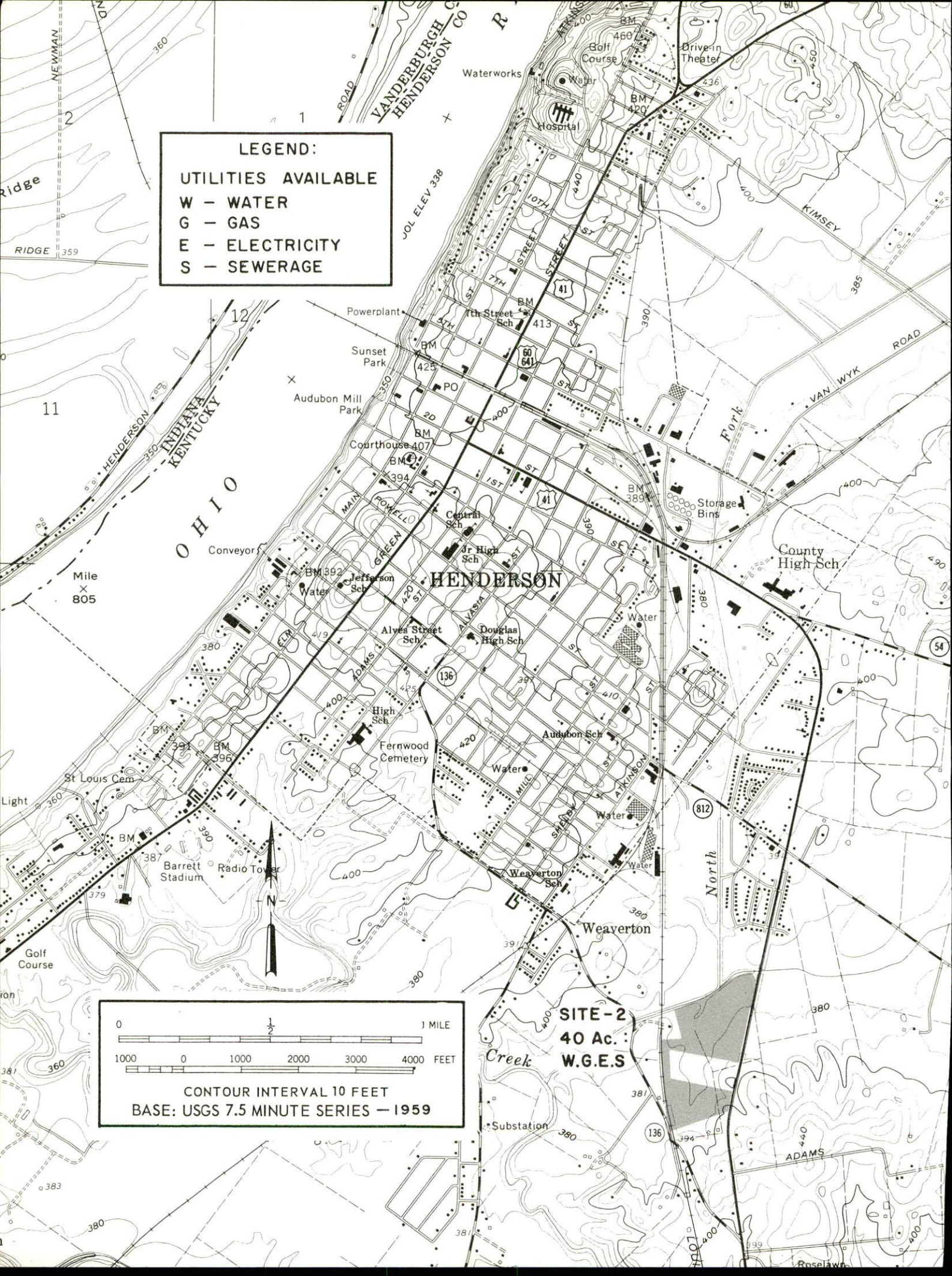
**UTILITIES AVAILABLE**

W - WATER

G - GAS

E - ELECTRICITY

S - SEWERAGE



0 1 2 3 4 5 6 7 8 9 10 11 12 13 14 15 16 17 18 19 20 21 22 23 24 25 26 27 28 29 30 31 32 33 34 35 36 37 38 39 40 41 42 43 44 45 46 47 48 49 50 51 52 53 54 55 56 57 58 59 60 61 62 63 64 65 66 67 68 69 70 71 72 73 74 75 76 77 78 79 80 81 82 83 84 85 86 87 88 89 90 91 92 93 94 95 96 97 98 99 100

0 1000 0 1000 2000 3000 4000 FEET

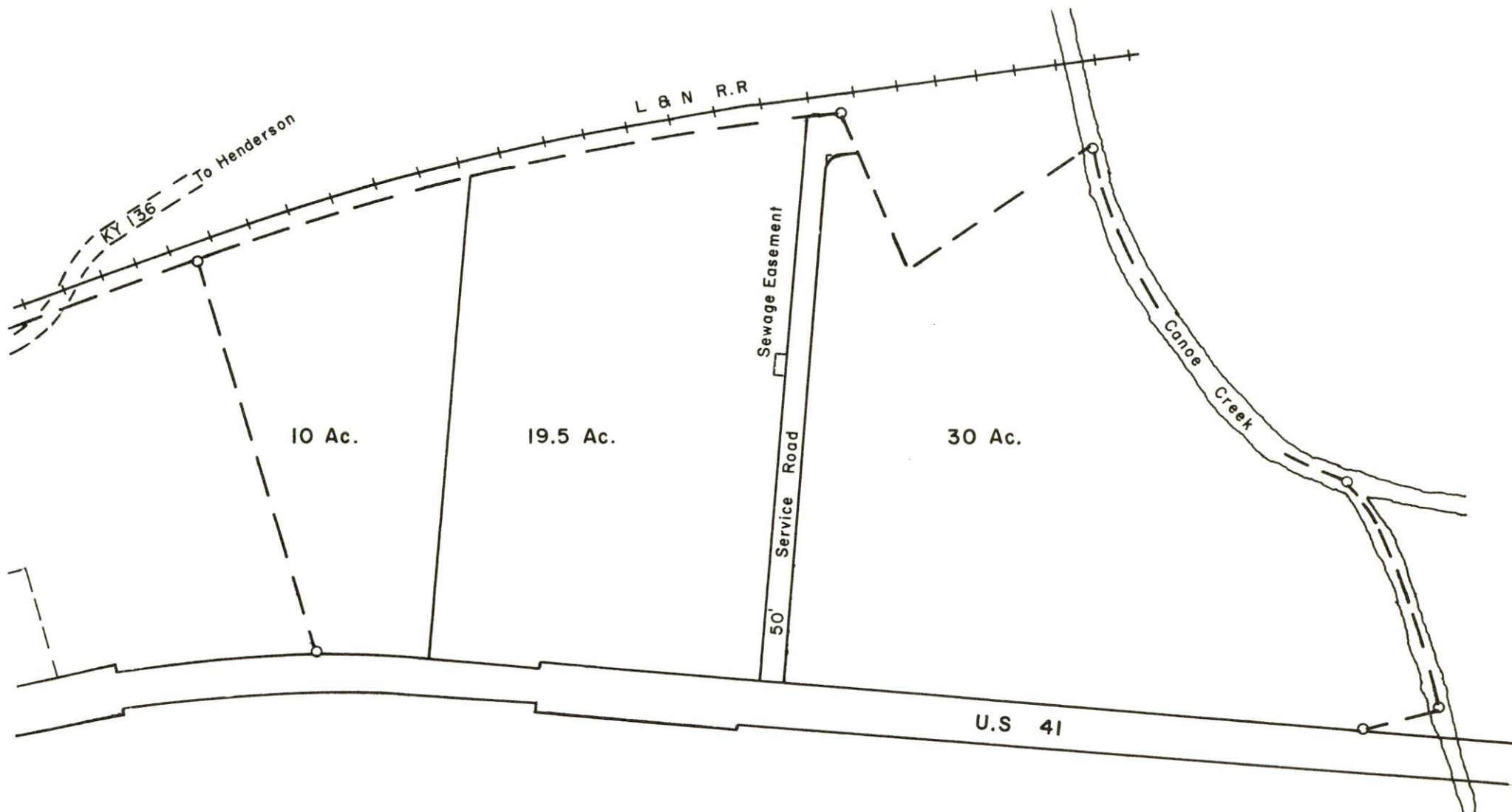
CONTOUR INTERVAL 10 FEET

BASE: USGS 7.5 MINUTE SERIES - 1959

**SITE-2**  
**40 Ac.**  
**W.G.E.S.**



HENDERSON-HENDERSON COUNTY  
INDUSTRIAL PARK U.S.41 SOUTH



## EDUCATION:

Graded Schools: The Henderson County School System is composed of ten elementary and one high school. The system during the 1966-67 school year had a student-teacher ratio of 27 to 1 for the elementary grades and 20 to 1 for the high school grades.

The Henderson Independent School District has five elementary, one junior high, and one high school. During the 1966-67 school year the student-teacher ratios were as follows: 26 to 1 for the elementary, 28 to 1 for the junior high, and 20 to 1 for the high school.

Vocational Schools: Henderson is served by the Owensboro Area Vocational School located in Owensboro, Kentucky. Courses offered include: auto mechanics, cosmetology, drafting, electronics, general industrial electricity, machine shop, printing, radio, television, and woodworking and carpentry.

A vocational school is planned for Henderson in conjunction with the new county high school.

Colleges: The Henderson Community College provides the citizens of Henderson ample opportunity for advanced education.

Community colleges in Kentucky occupy a unique position, with University membership on the one hand and community orientation on the other. Each college is an integral part of the University with the same standards of admission and operation as apply to the parent institution. Each college, through its local advisory board and other ties, relates itself to the needs of the community.

The community colleges have been charged with three functions: (1) the first is to offer transfer curricula for those who wish to complete the first two years of a baccalaureate program, (2) a second obligation is that of offering two-year terminal programs designed to prepare the student for immediate employment on a technical or semi-professional level, and (3) finally, the community colleges provide continuing educational opportunities for the citizens of their immediate area.



Other institutions of higher learning in the Henderson area include:

Evansville College, Evansville, Indiana, 9 miles  
Indiana State University, Evansville, Indiana, 9 miles  
Kentucky Wesleyan College, Owensboro, Kentucky, 29 miles  
Brescia College, Owensboro, Kentucky, 29 miles  
Southern Illinois University, Carbondale, Illinois, 100 miles  
Western Kentucky University, Bowling Green, Kentucky,  
100 miles  
Murray State University, Murray, Kentucky, 120 miles  
University of Louisville, Louisville, Kentucky, 146 miles  
Bellarmine College, Louisville, Kentucky, 146 miles  
Ursuline College, Louisville, Kentucky, 146 miles  
Catherine Spalding College, Louisville, Kentucky, 146 miles

#### PREVAILING WAGE RATES:

Specific rates, by job classification, will be provided on a personal basis by the management of manufacturing firms in Henderson. Arrangements for obtaining this information and other labor data, such as fringe benefits, can be made through the Henderson-Henderson County Chamber of Commerce.

#### UNIONS:

The following unions are represented in Henderson: Industrial Workers of America, International Chemical Workers Union, International Furniture Workers Union, and the United Rubber Workers of America.

#### TAXES:

##### PROPERTY TAX RATES PER \$100 OF ASSESSED VALUE FOR HENDERSON AND HENDERSON COUNTY, 1966

Taxing Unit	Henderson	Henderson County
City	\$ .538	\$
County	.138	.138
State	.015	.015
School	.706	.601
Total	\$ 1.397	\$ .754

Source: Kentucky Department of Commerce.

EXISTING INDUSTRY:

Firm	Product	Employment		
		Male	Female	Total
American Chrome Co., Inc.	Metal chairs, tables	27	6	33
Atlas Tack Corp.	Tacks, nails, staples, rivets, washers	125	50	175
Barnett Bros., Inc.	Ready mixed concrete	15	1	16
Bear Brand Hosiery Co.	Hosiery	115	330	445
Brown's Block Co.	Concrete block	7	0	7
CBS Sales Corp.	Dresses, sportswear, suits, blouses	35	165	200
Cohorn Tool Shop	Plastic molds	3	0	3
Cresline Plastic Pipe Co.	Plastic pipe	72	3	75
Cyanede Plastics, Inc.	Thermoplastics	43	10	53
Delker Bros. Mfg. Co.	Furniture	175	25	200
Diamonite Mfg. Co.	Plastic faced particle board, plastic faced cabinets	14	1	15
Dixie Lou Frocks, Inc.	Ladies' dresses	10	90	100
James C. Ellis Grain Co.	Grain elevator	10	0	10
Eye Opener Printing Co.	Newspaper, job printing	0	2	2
Farmers Tankage Co.	Rendering	30	0	30
Gibbs Automatic Molding Co., Division of Masco Corp.	Plastic specialties, zinc die castings	130	30	160
Gibbs Die Casting Aluminum Corp.	Aluminum die casting	42	18	60
Gleaner and Journal Publishing Co.	Newspaper, job printing	38	9	47
Glenwood Mfg., Inc.	Wood tables	150	50	200
Globe Industrial Contractors	Steel water tanks, steel fabrication	36	4	40
Gulf Oil Corp.	Fertilizer	20	4	24
Gulf Oil Corp., Spencer Chemical Division	Anhydrous ammonia, nitric acid, nitrogen fertilizer solutions, nylon plastics	287	13	300
H E B Corporation	Fabricated hardboard furniture parts	12	0	12
Hat Ra Chemical Co.	Sodium hypochlorite bleach, ammonia	8	0	8

(contd.)

Firm	Product	Employment		
		Male	Female	Total
Henderson Broom & Mop Mfgs.	Brooms, mops	9	1	10
Henderson Creamery Co.	Fluid milk, ice cream	23	3	26
Henderson Elevator	Grain elevator	28	2	30
Henderson Slaughtering & Provision	Meat processing	2	0	2
Henderson Trim Shop	Seat covers	1	1	2
Hercules Mfg. Co.	Truck bodies	35	2	37
Jasper-American Mfg. Co.	Particle board	39	1	40
Johnston's Steel Fabrication	Steel fabrication	6	0	6
Katterjohn, Inc.	Skid boxes, stock carts, dollies	10	2	12
Kentucky Air Products, Inc.	Acetylene	7	1	8
Khoury Brothers, Inc.	Wood furniture	28	3	31
Kim Furniture Co., Inc.	Occasional furniture	10	5	15
Kusan, Inc.	Thermoplastics	53	130	183
Nehi R C Bottling Co., Inc.	Carbonated beverages	12	1	13
Ohio Valley Provision Co., Inc.	Meat processing	21	0	21
The Osborn Mfg. Co.	Brushes	35	21	56
P B & S Chemical Co.	Chlorine, muriatic, nitric acids, solvents	50	9	59
Parks Machine & Supply	Machine shop, power transmission equipment	3	0	3
Period, Inc.	School, motel, nursing home furniture	170	15	185
Petty Printing Co.	Job printing	2	1	3
Precision Prestressed Products	Concrete products	65	2	67
Pro Sports All Mfg. Co.	Sporting goods	5	2	7
Ray's Septic Tank Co.	Concrete septic tanks	5	1	6
S & J Furniture Co.,	Wood office furniture, recreation furniture	18	3	21
Scott Lumber, Inc.	Hardwood lumber	63	3	66
Seitz Furniture Co.	Wood gift items	(Not available)		
Southern States Cooperatives	Seed and farm supplies	14	4	18

(contd.)



Firm	Product	Employment		
		Male	Female	Total
Technical Tape Corporation	Gift wrappings	100	200	300
Tri-State Die Casting Corp.	Zinc die casting, aluminum die casting	25	10	35
Tri-State Machine & Tool Co.	Dies, tools, die cast molds	15	2	17
Tri-State Plastic Molding Co.	Plastics (custom molding and housewares)	150	50	200
Troutman's Meat Products	Meat processing	11	3	14
Russell Wilson Coal Co.	Concrete products	15	1	16

For more information concerning Henderson, please request publication "Industrial Resources, Henderson, Kentucky."

This copy has been prepared by the Kentucky Department of Commerce, Division of Research, and the cost of printing paid from state funds.

# MAJOR HIGHWAY NETWORK IN KENTUCKY

Compiled By  
KENTUCKY DEPARTMENT  
OF  
COMMERCE  
Frankfort, Kentucky  
SEPT. 1966

## LEGEND

### INTERSTATE and PARKWAYS

- Proposed
- Under Const.
- Completed

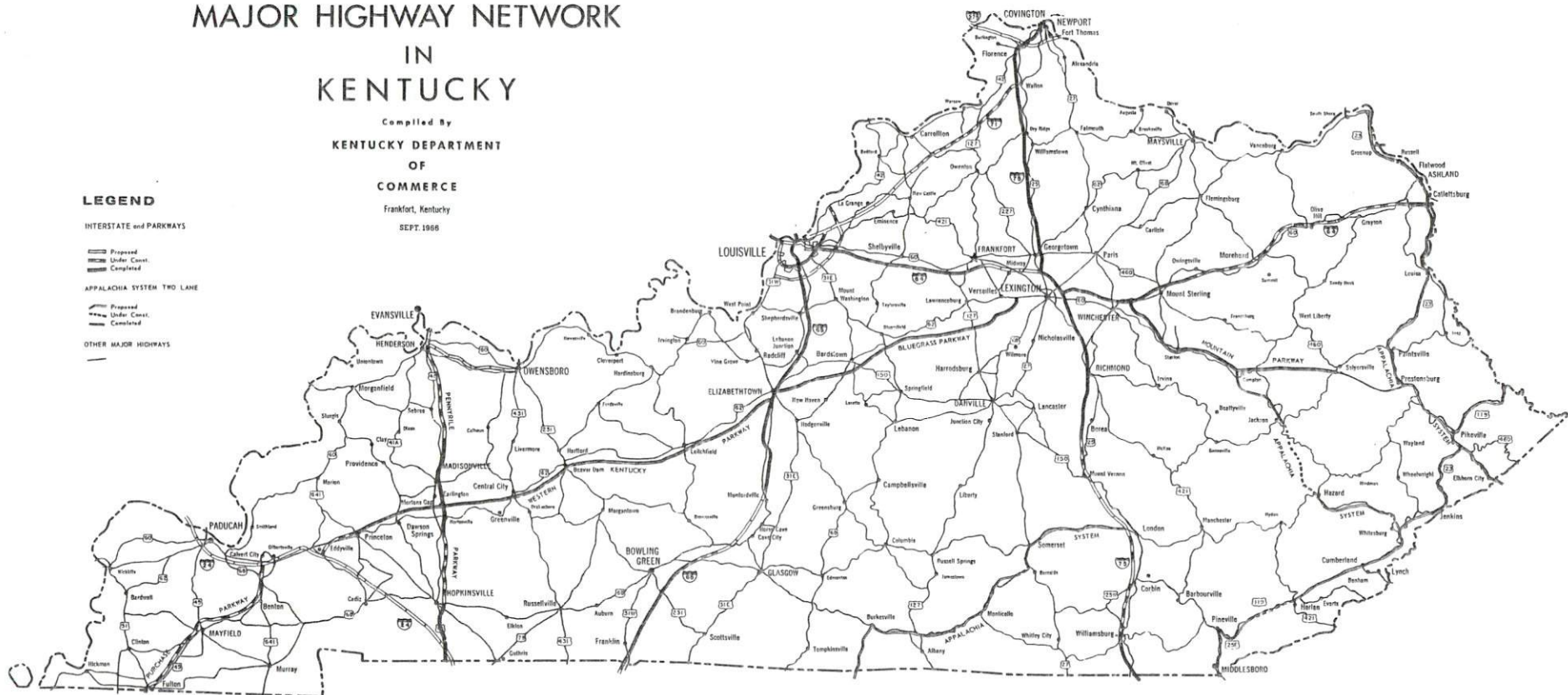
### APPALACHIA SYSTEM TWO LANE

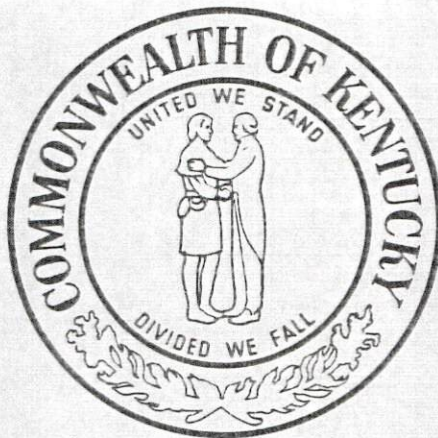
- Proposed
- Under Const.
- Completed

### OTHER MAJOR HIGHWAYS

- Completed

## MAJOR HIGHWAY NETWORK





PREPARED BY  
KENTUCKY DEPARTMENT OF COMMERCE  
FRANKFORT, KENTUCKY

AND

HENDERSON · HENDERSON COUNTY  
INDUSTRIAL FOUNDATION, INC.

1967