

1968

# Industrial Resources: Hopkins County - Madisonville

Kentucky Library Research Collections  
Western Kentucky University, [spcol@wku.edu](mailto:spcol@wku.edu)

Follow this and additional works at: [https://digitalcommons.wku.edu/hopkins\\_cty](https://digitalcommons.wku.edu/hopkins_cty)

 Part of the [Business Administration, Management, and Operations Commons](#), [Growth and Development Commons](#), and the [Infrastructure Commons](#)

---

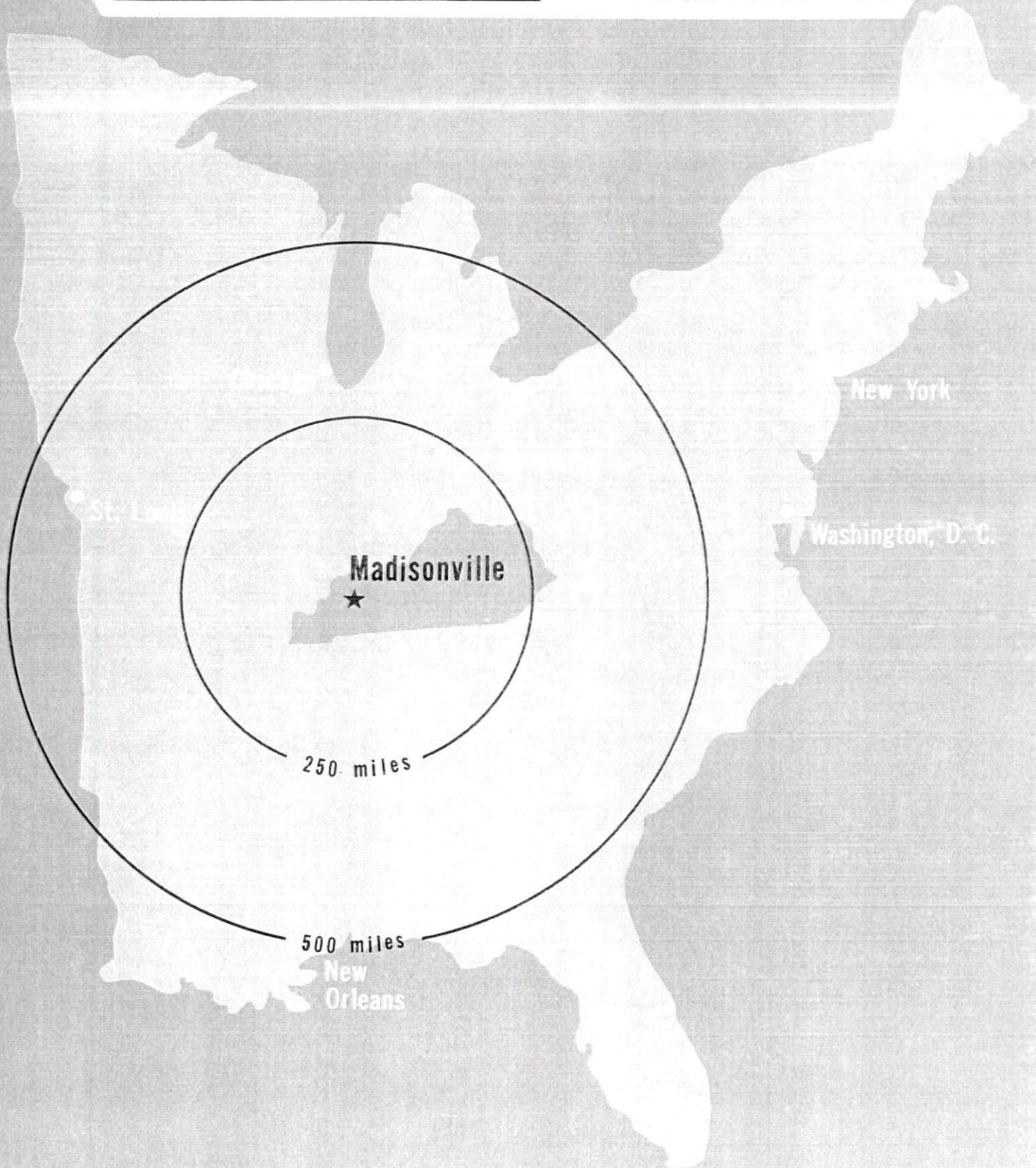
## Recommended Citation

Kentucky Library Research Collections, "Industrial Resources: Hopkins County - Madisonville" (1968). *Hopkins County*. Paper 28.  
[https://digitalcommons.wku.edu/hopkins\\_cty/28](https://digitalcommons.wku.edu/hopkins_cty/28)

This Report is brought to you for free and open access by TopSCHOLAR®. It has been accepted for inclusion in Hopkins County by an authorized administrator of TopSCHOLAR®. For more information, please contact [topscholar@wku.edu](mailto:topscholar@wku.edu).

# **INDUSTRIAL RESOURCES**

**MADISONVILLE  
KENTUCKY**



MADISONVILLE INDUSTRIAL SITES

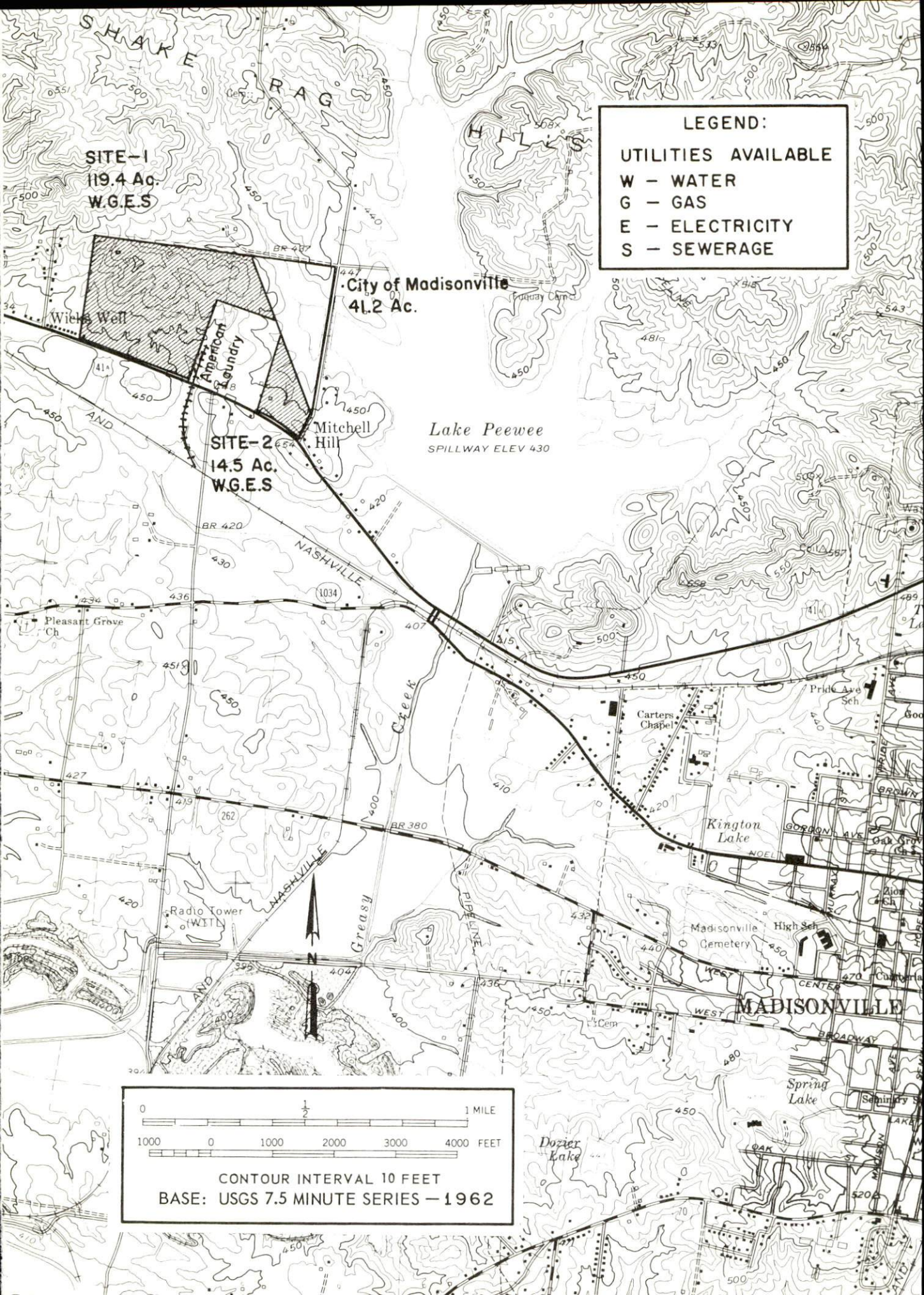
1968

## MADISONVILLE INDUSTRIAL SITES

For additional information concerning sites, contact Wayne Hodges, Executive Vice President, Madisonville Chamber of Commerce, Madisonville, Kentucky, or the Kentucky Department of Commerce, Frankfort, Kentucky.

SITE #1: ACREAGE AND TOPOGRAPHY: 119.4 acres, level to  
gently rolling  
LOCATION: Within northwest city limits  
HIGHWAY ACCESS: Kentucky Highway 41-A  
RAILROADS: Louisville & Nashville Railroad spur borders  
site on the east.  
WATER: Madisonville Light & Water Plant  
GAS: Western Kentucky Gas Company  
ELECTRICITY: Madisonville Light & Water Plant  
SEWERAGE: Madisonville Light & Water Plant  
OWNERSHIP: Privately owned

SITE #2: ACREAGE AND TOPOGRAPHY: 14.5 acres, level to  
gently rolling  
LOCATION: Within northwest city limits  
HIGHWAY ACCESS: Bordered on east by paved county road,  
and on the south by Kentucky Highway 41-A  
WATER: Madisonville Light & Water Plant  
GAS: Western Kentucky Gas Company  
ELECTRICITY: Madisonville Light & Water Plant  
SEWERAGE: Madisonville Light & Water Plant  
OWNERSHIP: Privately owned



**LEGEND:**

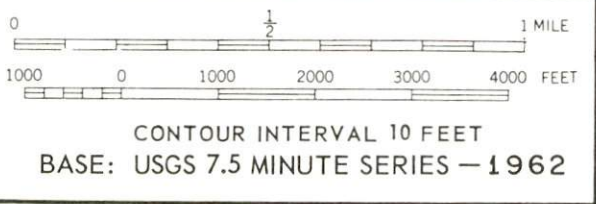
- UTILITIES AVAILABLE**
- W - WATER
- G - GAS
- E - ELECTRICITY
- S - SEWERAGE

**SITE-1**  
119.4 Ac.  
W.G.E.S

**City of Madisonville**  
41.2 Ac.

**SITE-2**  
14.5 Ac.  
W.G.E.S

*Lake Peewee*  
SPILLWAY ELEV 430



INDUSTRIAL RESOURCES  
MADISONVILLE, KENTUCKY

Prepared by  
The Kentucky Department of Commerce  
in cooperation with  
The Madisonville Chamber of Commerce

1968

Kentucky Library WKU

This copy has been prepared by the Kentucky Department of Commerce,  
Division of Research and Planning, and the cost of printing paid from  
state funds.

## TABLE OF CONTENTS

| <u>Chapter</u>                              | <u>Page</u> |
|---|-------------|
| INDUSTRIAL SITES . . . . .                  | i           |
| MADISONVILLE, KENTUCKY, A PROFILE . . . . . | 1           |
| THE LABOR MARKET . . . . .                  | 3           |
| Population . . . . .                        | 3           |
| Employment Characteristics . . . . .        | 3           |
| Wage Levels . . . . .                       | 6           |
| Labor Supply . . . . .                      | 7           |
| Labor Organizations . . . . .               | 7           |
| Income and Sales . . . . .                  | 7           |
| EDUCATION . . . . .                         | 8           |
| Elementary and High Schools . . . . .       | 8           |
| Vocational Schools . . . . .                | 8           |
| Colleges . . . . .                          | 9           |
| TRANSPORTATION . . . . .                    | 11          |
| Rail . . . . .                              | 11          |
| Highways . . . . .                          | 12          |
| Truck Service . . . . .                     | 12          |
| Air . . . . .                               | 13          |
| Other Transportation Services . . . . .     | 13          |
| POWER AND FUEL . . . . .                    | 14          |
| Electricity . . . . .                       | 14          |
| Natural Gas . . . . .                       | 14          |
| Coal . . . . .                              | 15          |
| Fuel Oil . . . . .                          | 15          |
| WATER AND SEWERAGE . . . . .                | 16          |
| Water . . . . .                             | 16          |
| Sewerage . . . . .                          | 16          |



| <u>Chapter</u>                                     | <u>Page</u> |
|--|-------------|
| AGRICULTURE - NATURAL RESOURCES - CLIMATE. . . . . | 18          |
| Agriculture . . . . .                              | 18          |
| Mineral Resources. . . . .                         | 18          |
| Water Resources . . . . .                          | 18          |
| Forests. . . . .                                   | 19          |
| Climate. . . . .                                   | 19          |
| LOCAL GOVERNMENT. . . . .                          | 20          |
| Structure . . . . .                                | 20          |
| Finance. . . . .                                   | 20          |
| Taxes . . . . .                                    | 20          |
| Planning and Zoning . . . . .                      | 21          |
| Safety . . . . .                                   | 21          |
| Fire . . . . .                                     | 21          |
| Police . . . . .                                   | 21          |
| Sanitation. . . . .                                | 22          |
| HEALTH . . . . .                                   | 23          |
| Hospitals . . . . .                                | 23          |
| Nursing Homes . . . . .                            | 23          |
| Public Health . . . . .                            | 23          |
| OTHER LOCAL FACILITIES . . . . .                   | 25          |
| Housing . . . . .                                  | 25          |
| Communication . . . . .                            | 25          |
| Libraries. . . . .                                 | 26          |
| Churches . . . . .                                 | 26          |
| Hotels and Motels . . . . .                        | 26          |
| Financial Institutions . . . . .                   | 26          |
| Clubs and Organizations . . . . .                  | 26          |
| Recreation . . . . .                               | 29          |
| Local. . . . .                                     | 29          |
| Area . . . . .                                     | 30          |
| Community Improvements . . . . .                   | 30          |
| Public . . . . .                                   | 30          |
| Business and Industrial . . . . .                  | 30          |
| HISTORY . . . . .                                  | 31          |

## MADISONVILLE, KENTUCKY, A PROFILE

### Location

Madisonville - located in the Audubon-Pennyriple area of Western Kentucky - is the largest city in Hopkins County and serves as county seat. Located on the new Pennyriple Parkway, Madisonville is only 50 miles south of Evansville, Indiana, and 150 miles southwest of Louisville.

### The Economy

Hopkins County has a well diversified economy based on employment in trade and services (3,104), mining and quarrying (2,204), manufacturing (1,149), and government (1,460). Total county employment averaged 11,300 in 1967. The county economy is productive and generated an effective buying income of \$7,044 per household in 1967.

Major fields of employment in the six-county Madisonville labor market area are trade and services (10,600), manufacturing (7,800), agriculture (7,000), and mining and quarrying (3,860).

The outlook for continued economic growth in Madisonville and the entire area is very favorable. Community attitudes, labor supply, and available industrial sites indicate additional industrial growth.

### Industrial Sites and Services

Two sites, totaling 134 acres, are now available for industrial use in Madisonville.

Good transportation facilities add to Madisonville's industrial possibilities.

- Rail service is provided by the Louisville & Nashville and Illinois Central Railroads.
- The new Pennyriple Parkway serves Madisonville.
- Truck services are available from seven firms.
- Commercial air service is available at Owensboro, 45 miles northeast of Madisonville, and at Evansville, 50 miles to the northwest.

## Recreation

Recreational attractions in the Madisonville area include the John James Audubon State Park and Pennyriple Forest State Park. Harness racing is found at the Audubon Raceway and thoroughbred racing at the James C. Ellis Park. Sightseeing includes the Jefferson Davis Monument State Shrine and the Shaker Museum.

Two of Western Kentucky's newest lakes - Lake Malone and Lake Beshear - add prime fishing in the region.

Kentucky Lake - the world's largest man-made lake, the 170,000-acre Land Between the Lakes National Recreation Area, and Lake Barkley are within easy driving distance of Madisonville.

## THE LABOR MARKET

### Population

The population of Madisonville has shown a steady increase throughout this century and in 1960 reached a high of 13,110 residents. Hopkins County's population has also increased during most of this century. Currently, it is estimated that there are 39,600 persons living in Hopkins County.

TABLE 1

#### POPULATION TREND - MADISONVILLE AND HOPKINS COUNTY, KENTUCKY <sup>1/</sup>

| Year               | Madisonville |          | Hopkins County |          |
|--------------------|--------------|----------|----------------|----------|
|                    | Population   | % Change | Population     | % Change |
| 1900               | 3,628        |          | 30,995         |          |
| 1950               | 11,132       | 206.8    | 38,815         | 25.2     |
| 1960               | 13,110       | 17.8     | 38,458         | - 0.9    |
| 1968 <sup>2/</sup> | NA           |          | 39,600         | 3.0      |

### Employment Characteristics

Recent statistics indicate that total employment in Hopkins County averaged 11,300 persons during 1967. Some 900 persons worked in agriculture while 10,400 were employed in nonagricultural occupations. The unemployment rate in Hopkins County during 1967 was only 2.8 percent of the labor force.

Major fields of nonagricultural employment were: mining and quarrying, trade and services, government, and manufacturing. During the latter part of 1967, major groups of manufacturing employment were: apparel (525); food and beverages (203); petroleum, coal and rubber (147); and lumber and furniture (117).

Since 1960, eight industries have announced plans to locate new plants in Madisonville and when completed these plants will provide jobs for over 300 workers. During this same period, five existing firms announced plans to invest over \$2 million in plant expansions, which will eventually result in 450 new jobs.

TABLE 2

MADISONVILLE MANUFACTURING FIRMS  
WITH 20 OR MORE EMPLOYEES <sup>3/</sup>

| Firm                         | Product   | Employment |     |     |
|------------------------------|---|------------|-----|-----|
|                              |   | T          | M   | F   |
| Austin Powder Co.            | Explosives  | 27         | 22  | 5   |
| Coca-Cola Bottling Co.       | Soft drinks   | 22         | 18  | 4   |
| Dr. Pepper Bottling Co.      | Soft drinks   | 21         | 21  | 0   |
| The Enro Shirt Co., Inc.     | Sport shirts  | 325        | 35  | 290 |
| Goodyear Tire and Rubber Co. | Shoe products   | 250        |     |     |
| Joe Leasure & Sons, Inc.     | Machine shop  | 20         | 19  | 1   |
| Madisonville Publishing Co.  | Offset printing   | 44         | 26  | 18  |
| Munday Manufacturing Co.     | Homes, motels,<br>portable classrooms                   | 30         | 28  | 2   |
| Ruby Concrete Co.            | Transit-mixed concrete,<br>precast concrete<br>products | 24         | 23  | 1   |
| U. C. Milk Co., Inc.         | Milk products   | 115        | 104 | 11  |
| Versnick Manufacturing Co.   | Cylinder sleeves, taper<br>plugs, motor block<br>sealer | 22         | 20  | 2   |

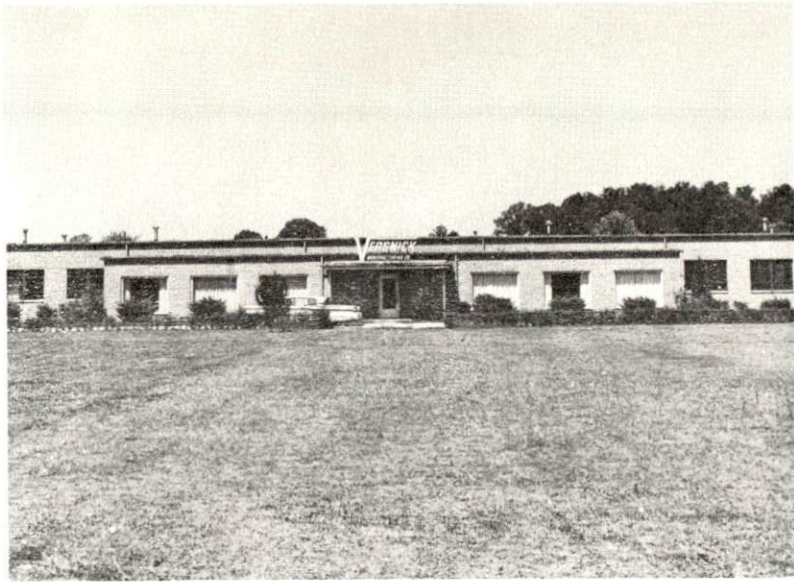
Manufacturing employment in the Madisonville labor supply area - Hopkins, Webster, Caldwell, Christian, Muhlenberg, and McLean Counties - totals slightly less than 8,000, a gain of 62 percent during the 1960's. The location of a number of major new plants during this period has been a strong influence on this trend and indicates the production advantages of this area.

TABLE 3

MANUFACTURING EMPLOYMENT,  
MADISONVILLE LABOR MARKET AREA\* - SEPTEMBER, 1967 <sup>4/</sup>

| Industry                     | Employment |
|------------------------------|------------|
| TOTAL                        | 7,824      |
| Apparel                      | 2,567      |
| Metal products and machinery | 2,360      |
| Lumber and furniture         | 978        |
| Other                        | 1,919      |

\*Includes only those workers covered by unemployment insurance.



Versnick Mfg. Co.



Enro Shirt Co.



West Kentucky Coal Co.



U. C. Milk Co.

## Wage Levels

The 1967 average weekly wage for all industries in Hopkins County covered by unemployment insurance was \$107.26. The weekly average in manufacturing was \$81.47. Comparable figures for Kentucky were averages of \$104.50 for all industries and \$115.08 for manufacturing.

Some examples of occupational wage rates in Madisonville are listed below. These statistics would not be considered union rate. 5/

|                                 | <u>Wages Per Hour</u> |                |                   |
|---------------------------------|-----------------------|----------------|-------------------|
|                                 | <u>Starting</u>       | <u>Maximum</u> | <u>Prevailing</u> |
| Assembler                       | \$1.60                | \$2.35         | \$2.00            |
| Drill Press Operator            | 1.60                  | 2.10           | 2.00              |
| Grinder, Machine                | 1.60                  | 2.10           | 2.00              |
| Inspector                       | 1.75                  | 2.50           | 2.20              |
| Lathe Operator                  | 1.75                  | 2.50           | 2.20              |
| Machinist, Set Up               | 2.25                  | 3.00           | 2.75              |
| Polisher & Buffer               | 1.60                  | 2.10           | 2.00              |
| Production Laborer              | 1.60                  | 2.00           | 1.90              |
| Punch Press Operator            | 1.60                  | 2.10           | 2.00              |
| Sprayer or Painter              | 1.60                  | 2.35           | 2.00              |
| Welder, Arc or Acetylene        | 2.50                  | 3.00           | 2.75              |
| Welder, Resistance or Spot      | 2.00                  | 2.50           | 2.25              |
| <br>                            |                       |                |                   |
| Carpenter                       | 2.00                  | 3.50           | 3.00              |
| Electrician                     | 2.00                  | 3.50           | 3.00              |
| Janitor                         | 1.60                  | 2.00           | 1.75              |
| Laborer                         | 1.60                  | 2.25           | 2.00              |
| Machinist                       | 2.50                  | 3.50           | 3.00              |
| Mechanic, Maintenance           | 2.00                  | 3.00           | 2.50              |
| Shipping Clerk                  | 1.60                  | 2.10           | 1.85              |
| Truck Driver                    | 1.60                  | 2.75           | 2.25              |
| Welder, Acetylene, Carbon & Arc | 2.50                  | 3.00           | 2.75              |
| <br>                            |                       |                |                   |
| Bookkeeper or Accounting Clerk  | 1.60                  | 2.00           | 1.80              |
| Chief Clerk                     | 1.60                  | 2.00           | 1.80              |
| Draftsman                       | 2.00                  | 3.00           | 2.50              |
| File Clerk                      | 1.60                  | 2.00           | 1.80              |
| Key Punch Operator              | 1.60                  | 2.00           | 1.80              |
| Receptionist                    | 1.60                  | 2.00           | 1.80              |
| Secretary                       | 1.75                  | 2.25           | 2.00              |
| Stenographer                    | 1.75                  | 2.00           | 1.90              |
| Tabulating Machine Operator     | 1.75                  | 2.25           | 2.00              |
| Telephone Operator              | 1.60                  | 2.10           | 2.00              |
| Typist                          | 1.60                  | 2.00           | 1.75              |

## Labor Supply

Currently there is an estimated labor supply of 3,500 men and 5,150 women in the Madisonville labor market area. The current labor supply includes the unemployed, underemployed, and persons who would enter the labor force if jobs became available.

This supply will be augmented by 7,800 boys and 7,500 girls who will become 18 years of age by 1974.

The highway network and level topography of this area is conducive to commuting if suitable employment is available.

TABLE 4

### CURRENT AND FUTURE LABOR SUPPLY, MADISONVILLE LABOR MARKET AREA <sup>6/</sup>

| County            | 1968  |       |        | Future Labor Supply by 1974 |       |        |
|-------------------|-------|-------|--------|-----------------------------|-------|--------|
|                   | Total | Male  | Female | Total                       | Male  | Female |
| Labor Market Area | 8,650 | 3,500 | 5,150  | 15,330                      | 7,826 | 7,504  |
| Hopkins           | 2,000 | 700   | 1,300  | 3,761                       | 1,922 | 1,839  |
| Webster           | 1,300 | 500   | 800    | 1,351                       | 706   | 645    |
| Caldwell          | 750   | 300   | 450    | 1,216                       | 621   | 595    |
| Christian         | 1,600 | 700   | 900    | 5,278                       | 2,702 | 2,576  |
| Muhlenberg        | 2,000 | 900   | 1,100  | 2,815                       | 1,423 | 1,392  |
| McLean            | 1,000 | 400   | 600    | 909                         | 452   | 457    |

## Labor Organizations

The following labor organizations are represented in Hopkins County: Amalgamated Clothing Workers of America; United Mine Workers of America, District 50; and United Rubber Workers.

## Income and Sales

Effective buying income in Hopkins County in 1967 was estimated at \$85,227,000. Income per household was estimated at \$7,044, with 52 percent of the households in the \$5,000 or above income class. Retail sales totaled \$58,218,000. During that same period, effective buying income in Madisonville was estimated at \$43,878,000. Income per household was estimated at \$7,835, with 55 percent of the households in the \$5,000 or above income class. Retail sales totaled \$47,689,000. <sup>7/</sup>

There were 445 retail trade establishments operating in Hopkins County in 1963, of which 237 were located in Madisonville. <sup>8/</sup>



## EDUCATION

The educational system within the Madisonville labor market area has the facilities to produce an effective labor force for future industrial growth.

### Elementary and High Schools

Madisonville is served by the Hopkins County School System. Special personnel includes eight teachers for exceptional children, seven teachers for the educable, a teacher for the trainable, a homebound teacher, three counselors, and two social workers. Special facilities and programs include language labs, reading clinics, Title I Program, special education, adult education, and a work-study program.

Approximately 75 percent of those who start the ninth grade graduate and about 40 percent of those who graduate enter college.

Recent improvements include the construction of a new high school, Madisonville-North Hopkins High School, at a cost of \$2,500,000.

The school system's 1967-68 budget totaled \$3,222,758.31. School officials estimate an increase of \$240,000 in the 1968-69 budget. Bonded indebtedness of the system as of June 30, 1968, was \$2,316,876.25.

TABLE 5

### SCHOOLS, ENROLLMENT, NUMBER OF TEACHERS, STUDENT-TEACHER RATIO IN HOPKINS COUNTY, 1967-68 <sup>9/</sup>

| School                      | Grades | Enrollment | No. of Teachers | Student-Teacher Ratio |
|-----------------------------|--------|------------|-----------------|-----------------------|
| Madisonville High School    | 9-12   | 1,333      | 62              | 22-1                  |
| South Hopkins High School   | 9-12   | 440        | 23              | 19-1                  |
| West Hopkins High School    | 9-12   | 356        | 20              | 18-1                  |
| Seminary Junior High School | 7- 8   | 659        | 25              | 26-1                  |
| Hopkins Elementaries        | 1- 8   | 4,824      | 174             | 22-1                  |

### Vocational Schools

The Madisonville labor market area is served by a vocational-technical school in Madisonville and extension centers in Christian County and Muhlenberg County. The school in Madisonville offers courses in

auto body repair, auto mechanics, carpentry, drafting, electronics technician, industrial electricity, and machine shop. The Christian County Extension offers courses in appliance repair, auto mechanics, building trades, drafting, industrial electricity, and welding. The Muhlenberg County Extension offers courses in auto mechanics, building trades, drafting, industrial electricity, and welding. Upgrading courses are offered in evening extension classes for employed persons. Special courses are also available for eligible people under the Manpower Development and Training Act.

Operating under the sanctions of the Madisonville Area Vocational-Technical School is a separate licensed practical nursing school.

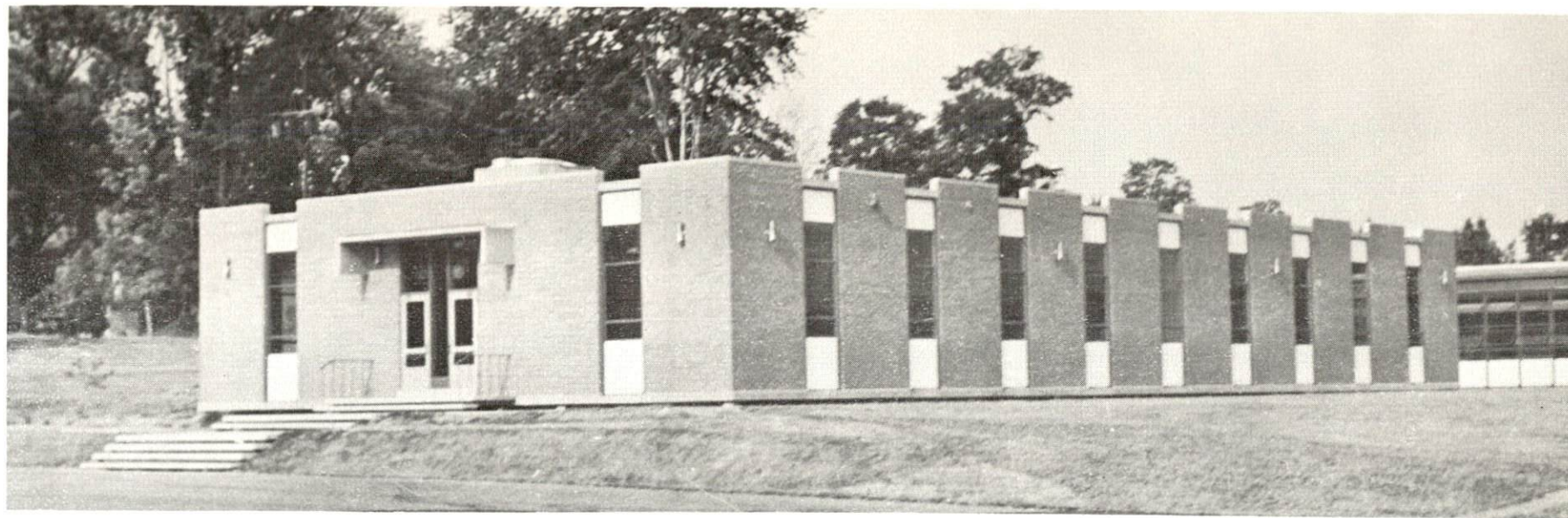
The Allied Health Center, a training school for workers in medical technology and related fields, will be constructed in Madisonville. This school will be unique in the State of Kentucky and the southeastern United States. The school will be under the control and supervision of the Madisonville Area Vocational-Technical School.

### Colleges

The Madisonville Community College has a total enrollment of 203 students. The college is an integral part of the University of Kentucky with the same standards of admission and operation as apply to the parent institution. Construction of an additional classroom building is being considered.

Other institutions of higher learning in the Madisonville area include:

| <u>College or University</u>   | <u>Location</u>         | <u>Distance</u> |
|--------------------------------|-------------------------|-----------------|
| Kentucky Wesleyan College      | Owensboro, Kentucky     | 47 miles        |
| Brescia College                | Owensboro, Kentucky     | 47 miles        |
| Murray State University        | Murray, Kentucky        | 85 miles        |
| Western Kentucky University    | Bowling Green, Kentucky | 80 miles        |
| Evansville College             | Evansville, Indiana     | 50 miles        |
| Henderson Community College    | Henderson, Kentucky     | 40 miles        |
| Hopkinsville Community College | Hopkinsville, Kentucky  | 36 miles        |



Madisonville Area Vocational - Technical School



Madisonville College Extension Center

## TRANSPORTATION

### Rail

Madisonville is served by the Evansville Division of the Louisville & Nashville Railroad and the Kentucky Division of the Illinois Central Railroad.

The Louisville & Nashville Railroad operates two regularly scheduled passenger trains each day - one north to Evansville, Indiana, and St. Louis, Missouri, and one south to Nashville, Tennessee; Atlanta, Georgia; and New Orleans, Louisiana. There are six scheduled freights each day running between Nashville and Evansville - three north and three south. In addition, there is an average of two extra through freights daily. Merchandise cars are operated from Evansville. Auxiliary truck service is available but there is a minimum of 6,000 pounds of freight.

Inbound freight averages 125 cars per month, consisting mostly of building materials and agricultural implements. Outbound freight averages 13,000 cars per month, 90 percent of which is coal. Siding facilities for 1,300 cars are available on the 16 miles of track at Atkinson Yard in Madisonville.

The Illinois Central operates one through freight daily each way between Louisville and Paducah with terminals at Louisville, Central City, Princeton, and Paducah. Also, there are seven local freights between Central City and Madisonville. Merchandise car service is available but there is a minimum of 6,000 pounds of freight. Twenty-four hour switching service is provided as required.

Inbound freight averages 35 to 40 cars per month consisting of building materials, machinery, and rock. Outbound freight averages 11,000 cars per month, consisting mostly of coal, lumber, and tobacco.

Pickup and delivery service is provided by REA Express six days per week.

TABLE 6

RAILWAY TRANSIT TIME FROM MADISONVILLE, KENTUCKY, TO: 10/

| City             | No. of Days |  | City                | No. of Days |  |
|------------------|-------------|--|---------------------|-------------|--|
|                  | CL          |  |                     | CL          |  |
| Atlanta, Ga.     | 3           |  | Louisville, Ky.     | 1           |  |
| Birmingham, Ala. | 3           |  | Los Angeles, Calif. | 5           |  |
| Chicago, Ill.    | 3           |  | Nashville, Tenn.    | 1           |  |
| Cincinnati, Ohio | 2           |  | New Orleans, La.    | 4           |  |
| Cleveland, Ohio  | 4           |  | New York, N. Y.     | 4           |  |
| Detroit, Mich.   | 5           |  | Pittsburgh, Pa.     | 4           |  |
| Knoxville, Tenn. | 3           |  | St. Louis, Mo.      | 1           |  |

Highways

Madisonville is on the new Pennyriple Parkway, a high-speed toll road running from Hopkinsville to Henderson, Kentucky. The Pennyriple Parkway will be open to Hopkinsville in late 1968, and to Henderson, Kentucky, in early 1969. The section of the Parkway adjacent to Madisonville is now open and will remain toll free. The Western Kentucky Parkway intersects with the Pennyriple Parkway 8 miles south of Madisonville. These connections give Madisonville easy access to Kentucky's expressway network.

Also serving Madisonville are U. S. Highways 41 and 41-A and Kentucky Highways 70, 85, 254, 281, and 336.

Truck Service: The following trucking firms serve Madisonville:

| <u>Company</u>               | <u>Home Office</u>     |
|------------------------------|------------------------|
| Skaggs Transfer, Inc.        | Louisville, Kentucky   |
| Ligon Specialized Haulers    | Madisonville, Kentucky |
| Ellis-Ligon Truck Line, Inc. | Indianapolis, Indiana  |
| Majors Truck Line, Inc.      | Caneyville, Kentucky   |
| Tennessee Cartage            | Nashville, Tennessee   |
| T. I. M. E. Freight, Inc.    | Lubbock, Texas         |
| McLean Trucking Company      | Indianapolis, Indiana  |

Skaggs Transfer, Inc., Ligon Specialized Haulers and McLean Trucking Company maintain terminals in Madisonville.

TABLE 7

HIGHWAY MILES AND TRUCK TRANSIT TIME FROM  
MADISONVILLE, KENTUCKY, TO SELECTED MARKET CENTERS

| City             | Highway<br>Miles | Delivery<br>Time (days) |    | City              | Highway<br>Miles | Delivery<br>Time <sup>11/</sup> |    |
|------------------|------------------|-------------------------|----|-------------------|------------------|---------------------------------|----|
|                  |                  | LTL                     | TL |                   |                  | LTL                             | TL |
| Atlanta, Ga.     | 367              | 2                       | 2  | Louisville, Ky.   | 150              | 1                               | 1  |
| Birmingham, Ala. | 314              | 3                       | 2  | Los Angeles, Cal. | 2,130            | 5                               | 4  |
| Chicago, Ill.    | 325              | 2                       | 2  | Nashville, Tenn.  | 110              | 1                               | 1  |
| Cincinnati, Ohio | 300              | 2                       | 2  | New Orleans, La.  | 635              | 3                               | 2  |
| Cleveland, Ohio  | 544              | 3                       | 2  | New York, N. Y.   | 926              | 3                               | 3  |
| Detroit, Mich.   | 500              | 2                       | 2  | Pittsburgh, Pa.   | 600              | 3                               | 2  |
| Knoxville, Tenn. | 294              | 2                       | 2  | St. Louis, Mo.    | 200              | 2                               | 2  |

Air

Madisonville is served by the Owensboro-Daviess County Airport in Owensboro, Kentucky, and by Dress Memorial Airport in Evansville, Indiana.

The Owensboro-Daviess County Airport is 45 miles northeast of Madisonville. Ozark Airlines has regularly scheduled flights each day. Dress Memorial is 50 miles northwest of Madisonville. Eastern, Delta, and Allegheny Airlines serve the airport with 17 scheduled flights each day.

Other Transportation Services

Madisonville is served by the Kentucky Bus Lines and by Southern Greyhound Bus Lines. The Kentucky Bus Lines make two runs to Louisville and two to Paducah each day. Southern Greyhound provides five northbound and five southbound buses daily.

There are two taxicab companies in Madisonville providing 24-hour service. Two car rental companies also serve the city.

## POWER AND FUEL

### Electricity

Madisonville is served by the Municipal Light and Water Plant. The plant, which receives its electric power from the Kentucky Utilities Company, is currently supplying 6,200 customers. The electricity is received at 69,000 volts, transformed at 4160y, and delivered at the voltage desired.

Current expansions call for doubling the number of substations in Madisonville from two to four.

Hopkins County is served by the Kentucky Utilities Company, which provides electric service for 78 Kentucky counties and has a generating capacity of 740,000 kw from its five generating stations. The company also has major interconnections with neighboring utility companies, which provide a means of interchanging substantial blocks of electricity.

Industrial rates will be furnished upon request by the Municipal Light and Water Plant, the Kentucky Utilities Company, or the Kentucky Department of Commerce.

### Natural Gas

Natural gas is supplied in Madisonville by the Western Kentucky Gas Company, whose source of supply is Texas Gas Transmission Corporation. Transmission lines are 6 and 10 inches; distribution lines are 2 and 10 inches. Pressure is maintained at 10 to 12 psi. Specific gravity is .675 and btu content is 1000.

#### Rate 3-A:

Gas service under this rate is available only to customers who require and contract for not less than 100,000 cubic feet per day, or 24,000,000 cubic feet per year. Service may be 100 percent interruptible, or 100 percent firm, or a combination of the two. The cost shall be:

#### Interruptible Service

|                |                             |                     |
|----------------|-----------------------------|---------------------|
| First          | 2,000,000 cu. ft. per month | \$950.00            |
| Next           | 2,000,000 cu. ft. per month | 44.5¢ per M cu. ft. |
| Next           | 2,000,000 cu. ft. per month | 42.5¢ per M cu. ft. |
| All additional | cu. ft. per month           | 36.5¢ per M cu. ft. |

## Coal

Madisonville is served by the Western Kentucky Coal Field. A representative delivery cost for coal can be determined below. <sup>12/</sup>

| <u>Point of Origin</u>  | <u>Type of Coal</u> | <u>Freight Delivery<br/>Cost Per Ton</u> |
|-------------------------|---------------------|--|
| Western Kentucky Gap    | Industrial          | \$1.37                                   |
| Jellico-Middlesboro Gap | Industrial          | 4.23                                     |
| Harlan                  | Industrial          | 4.35                                     |
| Hazard                  | Industrial          | 4.35                                     |

## Fuel Oil

Kentucky has three fuel oil refineries located in Catlettsburg, Louisville and Somerset. Kentucky's fuel supply is supplemented by border state operations.

Delivered prices of the various grades may be obtained from the Kentucky Department of Commerce.



## WATER AND SEWERAGE

### Water

The Municipal Light and Water Plant supplies Madisonville with treated water. The source of raw water is Lake Peewee. The design capacity of the treatment plant is 2,000,000 gpd. By using a special fast filter system this capacity has been increased to 2,500,000 gpd. Treatment consists of flocculation, sedimentation, filtration and chloridation.

Maximum daily water use has been 2,300,000 gallons while average daily use is 2,000,000 gallons. Average daily pumping time is 22 hours. Distribution lines are 4 to 16 inches in diameter and water pressure is maintained at 10 to 50 psi. Water temperature varies from 40° to 80° F. depending on the season. Storage facilities include a 3,000,000-gallon tank and two 200,000-gallon tanks.

At the present, Madisonville is constructing a new 4,147,000 gpd water treatment plant. The new plant will use a treatment process similar to the old plant but will also include fluoridation. The old plant will be closed.

Water rates are as follows:

|          |                |                   |
|----------|----------------|-------------------|
| First    | 3,000 gallons  | \$2.00 Minimum    |
| Next     | 7,000 gallons  | .65 per M gallons |
| Next     | 10,000 gallons | .45 per M gallons |
| Next     | 30,000 gallons | .35 per M gallons |
| All over | 50,000 gallons | .25 per M gallons |

Industrial rates for large users may be negotiated.

### Sewerage

The Municipal Light and Water Plant provides sewage disposal for Madisonville. The plant is a standard rate filter with primary and secondary treatment. Design capacity of the plant is 20,000 persons or 2,000,000 gpd. At the present there are 5,000 connections into the system serving an estimated 18,000 persons.

The system consists of 16-inch interceptors, 8-inch trunks, and 6- and 4-inch laterals. Separate storm sewers are maintained. Treated sewage is discharged into small streams which empty into the Green River.

Sewerage rates are as follows:

If the amount of the monthly water bill  
is as follows:

The monthly sewer charge  
shall be as follows:

|      |                    |        |
|------|--------------------|--------|
| From | \$ 0.00 to \$ 2.00 | \$1.40 |
| From | 2.01 to 4.00       | 2.00   |
| From | 4.01 to 8.00       | 2.50   |
| From | 8.01 to 15.00      | 3.00   |
| From | 15.01 and over     | 4.00   |

## AGRICULTURE - NATURAL RESOURCES - CLIMATE

### Agriculture

The approximate total land area of Hopkins County is 353,920 acres, with 53.5 percent of the area devoted to farming. In 1964, there were 1,071 farms in the county with an average size of 177 acres, valued at \$126 per acre (including buildings).

Farm income in the county is largely from field crops, principally tobacco and grains supplemented by the production of cattle, hogs, and dairy products. The 1964 value of sales of all farm products totaled \$4,596,348, averaging \$4,292 per farm. Crop sales totaled \$2,551,201; livestock and livestock products totaled \$2,044,147.

In 1966, agricultural production in Hopkins County included 348,000 pounds of burley tobacco, 764,000 pounds of dark air-cured tobacco, 1.7 million bushels of corn, and 456,000 bushels of soybeans. Livestock on farms on January 1, 1967, included 23,400 cattle and calves, and 17,100 hogs and pigs. Milk cows on farms during 1965 averaged 1,500 head, with milk production for the year totaling 7.6 million pounds.

### Mineral Resources

The principal mineral resources of Hopkins County consist of coal, petroleum, natural gas, clay, and glass sand. Small quantities of rock asphalt occur locally and are of undetermined value. In 1966 the value of all minerals produced was \$37,942,336, with coal and petroleum as the principal items.

Hopkins County coal typifies coal of the Western Coal Field. It is classed as high volatile bituminous and constitutes a good steam producing and domestic fuel and some for coking purposes.

Petroleum and natural gas production is one of the mineral items that has increased in the past few years due to new discoveries and recent completion techniques. The depth and character of producing horizons make them attractive to operators, and new drilling will no doubt discover larger reserves in the future. Natural gas discoveries are significant and should be of interest to industry.

### Water Resources

Surface water from impounded small streams and from lake filling strip mine pits constitute the largest source of industrial supplies. The public water supply for Madisonville and Earlington is obtained from stream

impoundments. The Tradewater River is the largest stream and has an average of about 325 cfs at Olney.

The municipal water supply for Dawson Springs, Mortons Gap, and Nortonville is obtained from ground water, as are some industrial supplies. Recent investigations indicate that excellent yields can be obtained at relatively shallow depths.

### Forests

There are 165,600 acres of commercial forest land in Hopkins County, covering 46.6 percent of the total land area. The most abundant species are red oaks, white oaks, hickories, sweetgum, ash, yellow poplar, and soft maple.

In Kentucky, within a 50-mile radius of Madisonville, the county seat, there are more than 1,600,000 acres of commercial forest land. In 1962, 155 million board feet of timber were harvested from this area. While some of the timber harvest is used locally, much of it is shipped out of the area for further processing.

Forests of the entire area receive organized protection from fire from the State Department of Natural Resources.

### Climate

Madisonville has an attractive year-round climate which is characterized by the lack of extremes and severe changes.

Winter is short - snowfall is light, and occurs mostly during January and February. The snow rarely lasts longer than a few days.

Rainfall is sufficient to meet the needs of each season. The wettest month is May with an average rainfall of 7.69 inches, and the driest month is January with an average rainfall of 2.21 inches. The average yearly precipitation is 47.98 inches.

The average yearly temperature is 56.8° F. The warmest month of the year is July with an average temperature of 73.8° F., and the coolest is February with an average temperature of 35.1° F. The temperature in Madisonville rarely falls below freezing from the middle of April through the middle of October.

Each year, there is an average of 104 clear days, 100 partly cloudy days, and 161 cloudy days. There is an average of 114 days with precipitation of 0.01 inch or over and an average of 14 days with heavy fog.

The prevailing wind is from the south-southwest.

## LOCAL GOVERNMENT

### Structure

Madisonville is a fourth-class city governed by a council consisting of a mayor elected for a term of four years and six councilmen elected by district for two-year terms.

Hopkins County is governed by a fiscal court consisting of a county judge and seven magistrates elected for terms of four years. Magistrates are elected by district; the county judge is elected at large.

### Finance

In 1967, Madisonville had a total income of \$754,136.37 while expenditures totaled \$748,902.08. Outstanding bonds are as follows: light and water - \$1,914,000 (July 1968); industrial revenue bonds - \$467,000 (June 1967).

The Hopkins County budget for the fiscal year ending June 30, 1969, is \$653,030. Bonded indebtedness as of June 30, 1968, was: hospital - \$188,000; hospital - \$161,000.

### Taxes

Madisonville operates on the income derived from the operation of the Municipal Light and Water Plant and has no property tax. Property taxes are the major source of Hopkins County's income. According to the provisions of Kentucky's Constitution, property must be assessed at 100 percent of value. The 1967-68 net assessed value of property in Hopkins County was:

| <u>Major Classes of Property</u> | <u>Hopkins County</u> |
|----------------------------------|-----------------------|
| Real Estate                      | \$142,041,258         |
| Tangibles                        | 32,262,415            |
| Public Service                   | 34,106,824            |

Property tax rates for Madisonville are shown below.

TABLE 8

PROPERTY TAX RATES PER \$100 OF ASSESSED VALUE FOR  
MADISONVILLE AND HOPKINS COUNTY, 1967 <sup>13/</sup>

| Taxing Unit | Madisonville | Hopkins County |
|-------------|--------------|----------------|
| State       | \$ .015      | \$ .015        |
| County      | .160         | .160           |
| School      | <u>.692</u>  | <u>.692</u>    |
| Total       | \$ .867      | \$ .867        |

Additional revenue for Madisonville is obtained by requiring business licenses which vary from \$3.75 to \$200.00, and city vehicle permits - \$5 for cars and trucks, \$3 for motorcycles.

Planning and Zoning

The Madisonville Planning Commission, after several years of inactivity, is presently preparing its base studies as a prerequisite for its comprehensive plan, zoning ordinance and subdivision regulations. The city is planning to initiate a comprehensive codes compliance program and is presently documenting an application for recertification of its Workable Program for Community Improvement. During past years, 160 units of low-cost public housing have been completed.

Safety

Fire: Madisonville has a Class-6 American Insurance fire rating. The Madisonville Fire Department maintains two fire stations, three 1,000-gpm pumpers, one 500-gpm pumper, and a new 1,500-gpm pumper. All the trucks are fully-equipped and the department also has a portable generator.

The department is staffed by a chief, two captains, four lieutenants, and twenty-six full-time firemen.

Police: The Madisonville Police Department is staffed by a chief, fourteen full-time deputies, and three full-time and one part-time radio dispatcher. The department has three radio-equipped, marked cruisers.

The Hopkins County Sheriff's office is staffed by the sheriff, two office deputies, two field deputies, and two radio dispatchers. Motorized equipment consists of three radio-equipped, marked cruisers.

Police protection is augmented by the services of the 43-member Hopkins County Radio Rescue Squad, Inc. Available equipment includes dragging equipment, a rescue truck, boats, search lights, and power plant. The squad performs light and heavy rescue and search missions.

Hopkins County also has a civil defense unit.

#### Sanitation

Free garbage collection is provided by the city. Garbage is removed once a week in residential areas and as often as needed in the business district. Disposal is by means of an open land fill.

## HEALTH

### Hospitals

Madisonville is served by the Hopkins County Hospital located in Madisonville. The hospital contains 300 beds and is staffed by 45 doctors, 23 registered nurses, 45 licensed practical nurses, 219 nurses aides, and 36 ward clerks. The hospital is fully-equipped to perform all the services of a general short term hospital. Recent improvements to the hospital include a 70-bed addition costing \$1,800,000.

Madisonville is also served by the Trover Clinic, a diagnostic clinic containing 90 examination rooms and providing the services of 46 doctors. The clinic will be expanded within the near future.

The Mid-Western Regional Mental Health Clinic is located in Madisonville. This outpatient clinic serves six counties and offers a variety of mental health services.

District I, State Tuberculosis Hospital is also located in Madisonville.

### Nursing Homes

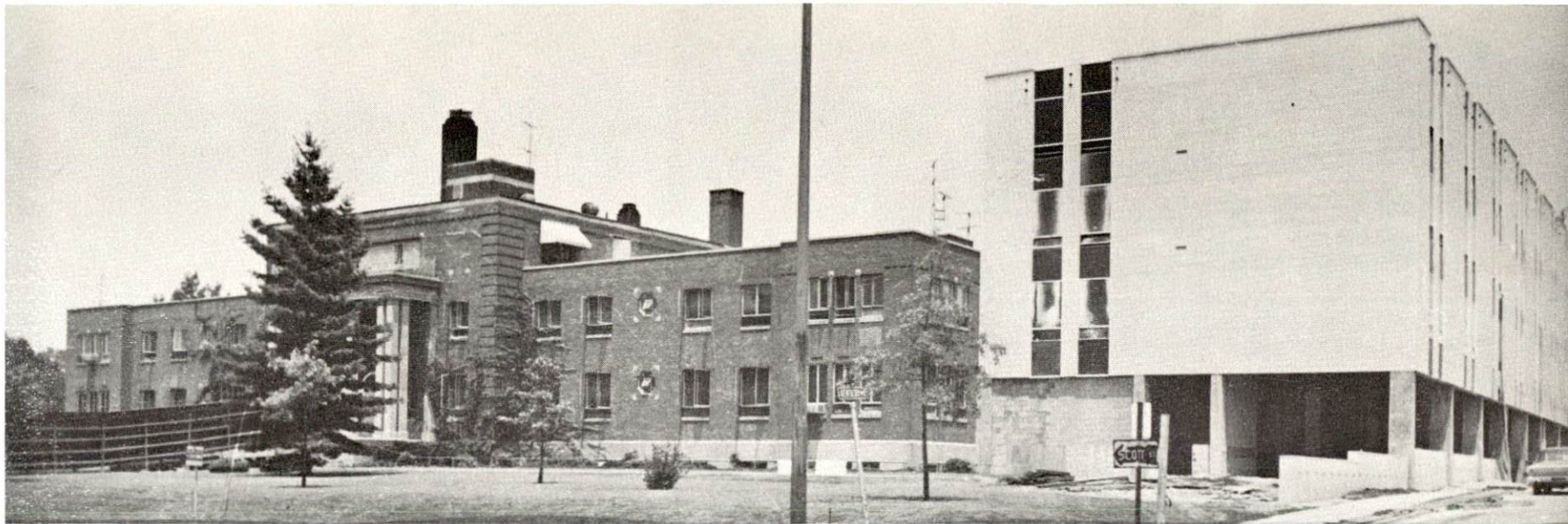
Madisonville is served by three licensed nursing homes. The three facilities contain a total of 206 beds.

### Public Health

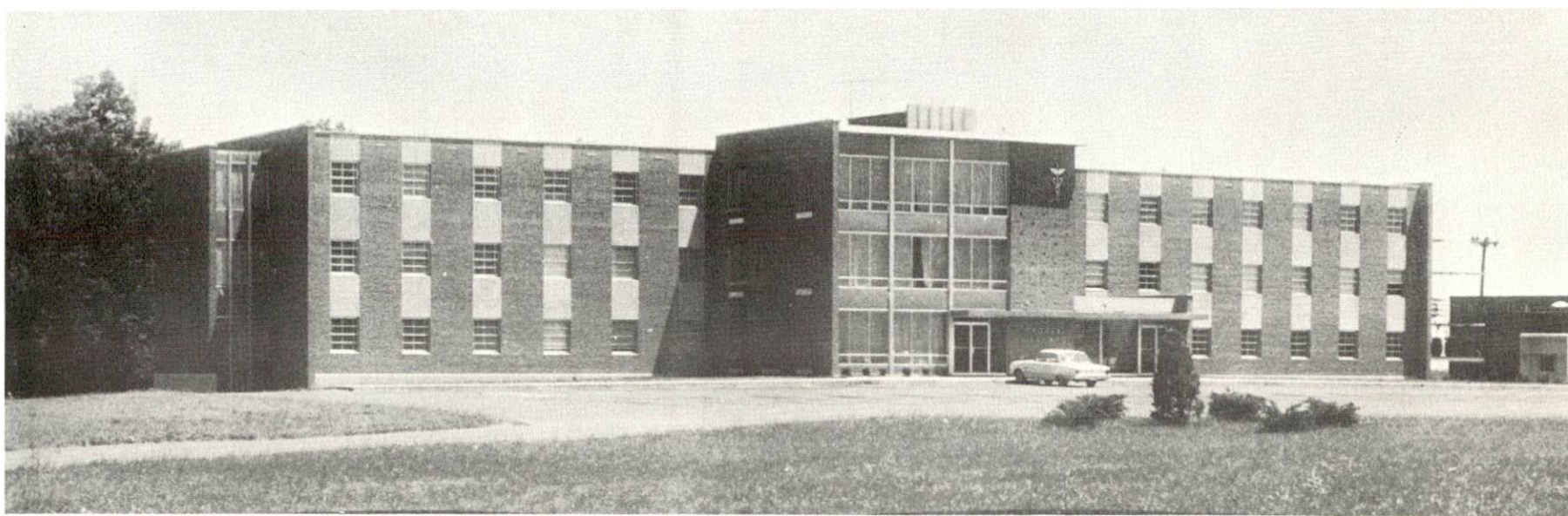
The Hopkins County Health Department is located in Madisonville. The department is staffed by a health officer, an administrative assistant, three nurses, two sanitarians, two clerks, an auxiliary worker, a vaccination assistance project clerk, and two home health aides.

Services provided include the following: communicable disease control, school health, infant and preschool health, crippled children's care, mental health, nutrition, tuberculosis control, chronic disease control, general sanitation, food and milk, plumbing and waste disposal, vital statistics, statistical services, multiphasic examination clinic, and family planning.





Hopkins County Hospital



Trover Clinic

## OTHER LOCAL FACILITIES

### Housing

There are numerous houses available for sale in Madisonville, but renting facilities are scarce. The cost of building a two- or three-bedroom brick house with lot varies from \$10,000 to \$18,000. A one-bedroom furnished apartment with utilities varies from \$80 to \$150 per month, unfurnished from \$65 to \$125 per month. Several small houses are now being constructed for renting purposes.

### Communication

Telephone: Madisonville is served by the South Central Bell Telephone Company. At the present, the company has 6,780 subscribers in Madisonville plus an additional 2,849 subscribers in Hopkins County.

Telegraph: Telegraph service is provided by the Western Union Telegraph Company. Telegrams may be sent from either the telegraph office or bus station at the following times: Monday through Friday - 8 a.m. to 7 p.m.; Saturday - 8 a.m. to 6 p.m.; Sunday - 10 to 11 a.m. and 1 to 4 p.m.

Postal: Madisonville has a first-class post office manned by 40 employees. One delivery is made each day. Mail is received and dispatched twice daily.

Newspapers: The Madisonville area is served by the Madisonville Messenger. The Messenger is published daily except for Sunday and has a circulation of 10,000.

Other papers are received daily from Louisville, Kentucky; Nashville, Tennessee; and Evansville, Indiana.

Radio: Madisonville has two radio stations. WFMW (AM) broadcasts on 730 kilocycles at a power of 500 watts sunrise to sunset and WFMW (FM) broadcasts on 93.9 megacycles at a power of 30,000 watts from 6 a.m. to 10 p.m. WTTL (AM) broadcasts on 1310 kilocycles at a power of 1000 watts from 5 a.m. to 12 midnight.

Television: Madisonville has a cable system which provides good reception from eight cities representing all three major networks. Some of the cities received include: Nashville, Tennessee; Evansville, Indiana; and Paducah and Bowling Green, Kentucky.

### Libraries

Madisonville and the surrounding area is served by the Madisonville Public Library. The Library contains 34,071 volumes and reported a 1967 circulation of 31,661.

### Churches

The following denominations are represented in Madisonville: Christian Science; Church of Christ; Church of Jesus Christ of Latter Day Saints; Assembly of God; Baptist; Christian; Church of God; Cumberland Presbyterian; Methodist; Presbyterian; General Baptist; Catholic; Jehovah's Witnesses; Life Temple Church; Light House Mission; Episcopal; Primitive Baptist; Seventh Day Adventist; United Pentecostal.

### Hotels and Motels

There are two hotels and seven motels in Madisonville, containing a total of 272 rooms. Two new motels are under construction.

### Financial Institutions

| <u>Bank</u>   | <u>Statement as of June 30, 1968</u> |                        |
|---|--------------------------------------|------------------------|
|   | <u>Assets</u>                        | <u>Deposits</u>        |
| Farmers Bank and Trust Co.                                | \$12,897,906.87                      | \$11,520,209.45        |
| The Kentucky Bank and Trust Co.                           | 18,176,388.41                        | 15,530,564.95          |
| Peoples Bank and Trust Co.                                | 9,504,723.98                         | 8,490,326.98           |
| <u>Savings and Loan Associations</u>                      | <u>Assets</u>                        | <u>Shared Accounts</u> |
| Madisonville Building and Loan Association*               | \$ 9,622,389.73                      | \$ 9,169,014.33        |
| Hopkins County First Federal Savings and Loan Association | 13,090,382.38                        | 12,221,352.47          |

\*Statement as of March 30, 1968.

### Clubs and Organizations

Business and Civic: Chamber of Commerce, Jaycees, Kiwanis, Lions, Rotary, Civitan, Ministerial Association, Welcome Wagon, Retail Merchants Association, PTA, Medical Society

Fraternal: American Legion, Eagles, I.O.O.F., Masonic Lodge, Moose Lodge, Shrine, V.F.W., Elks, Woodsmen of the World



Peoples Bank and Trust Co.



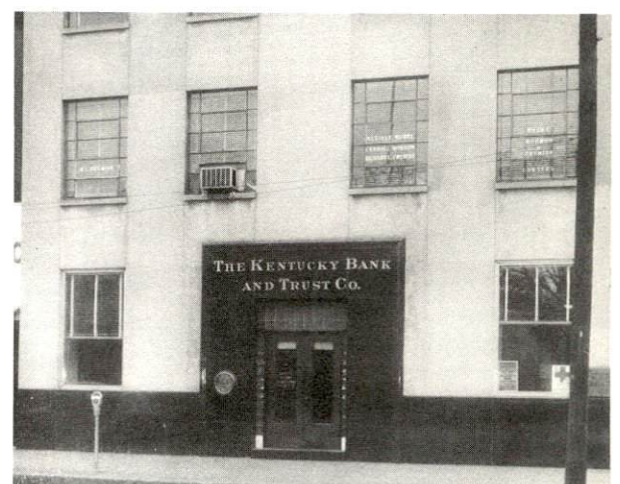
Madisonville Building and Loan Association



Hopkins County First Federal Savings and Loan Association



Farmers Bank & Trust Co.



The Kentucky Bank and Trust Co.



Madisonville Municipal Clubhouse

Residential Section



Rizpah Temple

Women's Clubs: YWCA, B and PW Club, DAR, Eastern Star, Garden Club, Cotillion, American Legion Auxiliary, VFW Auxiliary, Rotary Anns, Woman's Book Club, Post Matrons, Prosody Club, XI Gamma XI, Alpha Delta, Chautauqua Club, Women's Auxiliary

Youth: Boy Scouts, Girl Scouts, Cub Scouts, Brownies, F.F.A., F.H.A., 4-H, FTA, F.A.A., Beta Club, F.B.L.A., Madisonville Teen Club

### Recreation

Local: The City of Madisonville owns and operates a 185-acre park which has a 9-hole, 18-tee golf course, outdoor tables and barbecue ovens, 5 shelter houses, playgrounds for children, 2 large lakes well-stocked with fish, a well-equipped clubhouse and swimming lake, a lighted white sand beach, and a modern lighted baseball park seating 1,500.

A well-lighted field at the high school seats 2,500 people. Modern and fully equipped gymnasiums at the two high schools provide indoor facilities for basketball and other sports. The junior high also has a modern, fully equipped gymnasium.

The National Guard Armory contains a basketball floor and facilities for meetings and dances.

The Boy Scouts have a 75-acre park and the Girl Scouts have a 14-acre park fully equipped with all the necessary facilities for scouting.

The Hopkins County Agricultural and Industrial Development Fair Grounds are located in Madisonville where an annual county fair is held.

The Madisonville Country Club has a 9-hole, 18-tee golf course, clubhouse and swimming pool.

The VFW has a playground and picnic area and a modern swimming pool.

A new recreation area has been developed north of Madisonville which includes a fishing lake, boating and swimming facilities, cabins and a game preserve, all of which are open to the public.

There is one supervised playground operated during the summer months.

The Hopkins County Youth Foundation, a nonprofit organization, has a Board of Directors who conduct a year-round program for Hopkins County's young people. The program is supported by an annual fund drive.

Madisonville also has a complete football, basketball, and baseball Little League program.

There is one 20-lane bowling alley, one walk-in theatre, and one drive-in theatre located in Madisonville.

There are ten well-stocked fishing lakes within 5 miles of Madisonville.

Area: Madisonville is located in the Audubon-Pennyryle area of Western Kentucky which offers a variety of recreational facilities.

The John James Audubon State Park, Henderson, a 590-acre nature preserve, has cottages and camping accommodations, 20-acre lake, swimming, fishing and 9-hole golf course. Two museums in the park contain original prints from Audubon's bird paintings.

The Pennyryle Forest State Park, Dawson Springs, is Kentucky's largest state park. Facilities include cottages and camping accommodations, golfing, fishing, horse riding, swimming, and supervised recreation.

Lake Malone State Park, Greenville, offers camping accommodations only. Facilities include an 826-acre lake, swimming, boating, fishing, and playground.

Madisonville is also within easy driving distance of Kentucky Dam Village State Park, Lake Barkley State Park, Kenlake State Park, and Land Between the Lakes National Recreation Area.

Other attractions in the Madisonville area include harness racing at the Audubon Raceway and thoroughbred racing at the James C. Ellis Park, both near Henderson.

### Community Improvements

Public: New Madisonville-North Hopkins High School - 70-bed addition to hospital - new 4, 147,000 gpd water treatment plant under construction - community college - technical training school - mental health clinic.

Business and Industrial: Bowles Tool & Die Company expansion - Goodyear Tire & Rubber Company expansion - new plant, Huebsch Originators - new plant, Kentucky Birmingham Bolt Company - new plant, American Mine Tool - new hospital laundry to serve six hospitals in the surrounding counties - computer service will soon be available in Madisonville for hospitals in the surrounding counties - two new motels.

## HISTORY

Hopkins County was formed in 1806, as the forty-ninth county in the state. Its territory was taken from Henderson County. Hopkins County later gave part of her area to help form Webster County. Pond River, a tributary of Green River, flows along the county's eastern border and Tradewater River drains the southwestern part. Green River, which touches the county on the extreme northeast, is navigable. These streams have always provided a natural waterway to the Ohio River.

Hopkins County was named for General Samuel Hopkins, a native of Virginia. He served in the Revolutionary War with distinction, and more than once received the plaudits of General Washington for duties well performed. He moved to Kentucky several years after the war and settled on Green River in Henderson County. He served several terms in the State Legislature and one term in the National Congress, then retired to private life to devote his energies to farming.

Madisonville, the county seat, was named for President James Madison, and was incorporated in 1810. Daniel McGary and Solomon Silkwood donated forty acres for the town site. The place selected proved to be an attractive one and soon settlers were drawn to it.

Names worthy of remembrance include: William R. Weir, who served in the House of Representatives in the State Legislature for three consecutive terms during the formative years in the county's history; John B. Laffoon, who helped guide the state during the pre-Civil War period with outstanding work in the Lower House; and Washington Chandler, S. H. Wycliffe, and James Payne who served after the war period when political factions threatened to disrupt the state.

Governor Laffoon served during a trying time, not only for Kentucky, but for the nation. Kentucky was hit hard by the depression. Banks failed, unemployment was widespread, homes and farms were mortgaged, and prices for farm products were very low. The changes initiated in the National Administration brought economic relief to many thousands of Kentuckians, and the last two years of Governor Laffoon's administration proved to be the beginning of an economic recovery in the state.



## SOURCES OF INFORMATION

- 1/ U. S. Bureau of the Census, U. S. Census of Population, Kentucky.
- 2/ Department of Sociology, University of Kentucky, Kentucky County Provisional Population Estimates, 1968, Lexington, Kentucky.
- 3/ Kentucky Department of Commerce, 1968 Kentucky Directory of Manufacturers.
- 4/ Kentucky Department of Economic Security, Division of Research and Statistics.
- 5/ Kentucky Department of Economic Security, Employment Service Office.
- 6/ Kentucky's Labor Supply Estimates, Kentucky Department of Commerce, 1968.
- 7/ Sales Management Magazine, Survey of Buying Power, June 10, 1968.
- 8/ U. S. Department of Commerce, 1963 U. S. Census of Business.
- 9/ Kentucky Department of Education, Kentucky School Directory, 1967-68.
- 10/ Louisville & Nashville Railroad Company, Louisville, Kentucky.
- 11/ Ellis-Ligon Truck Line, Inc., Indianapolis, Indiana.
- 12/ Louisville & Nashville Railroad Company, Louisville, Kentucky.
- 13/ Kentucky Department of Revenue, Kentucky Property Tax Rates, 1967.