

1970

Industrial Resources: Johnson County - Paintsville

Kentucky Library Research Collections
Western Kentucky University, spcol@wku.edu

Follow this and additional works at: https://digitalcommons.wku.edu/johnson_pty



Part of the [Business Administration, Management, and Operations Commons](#), [Growth and Development Commons](#), and the [Infrastructure Commons](#)

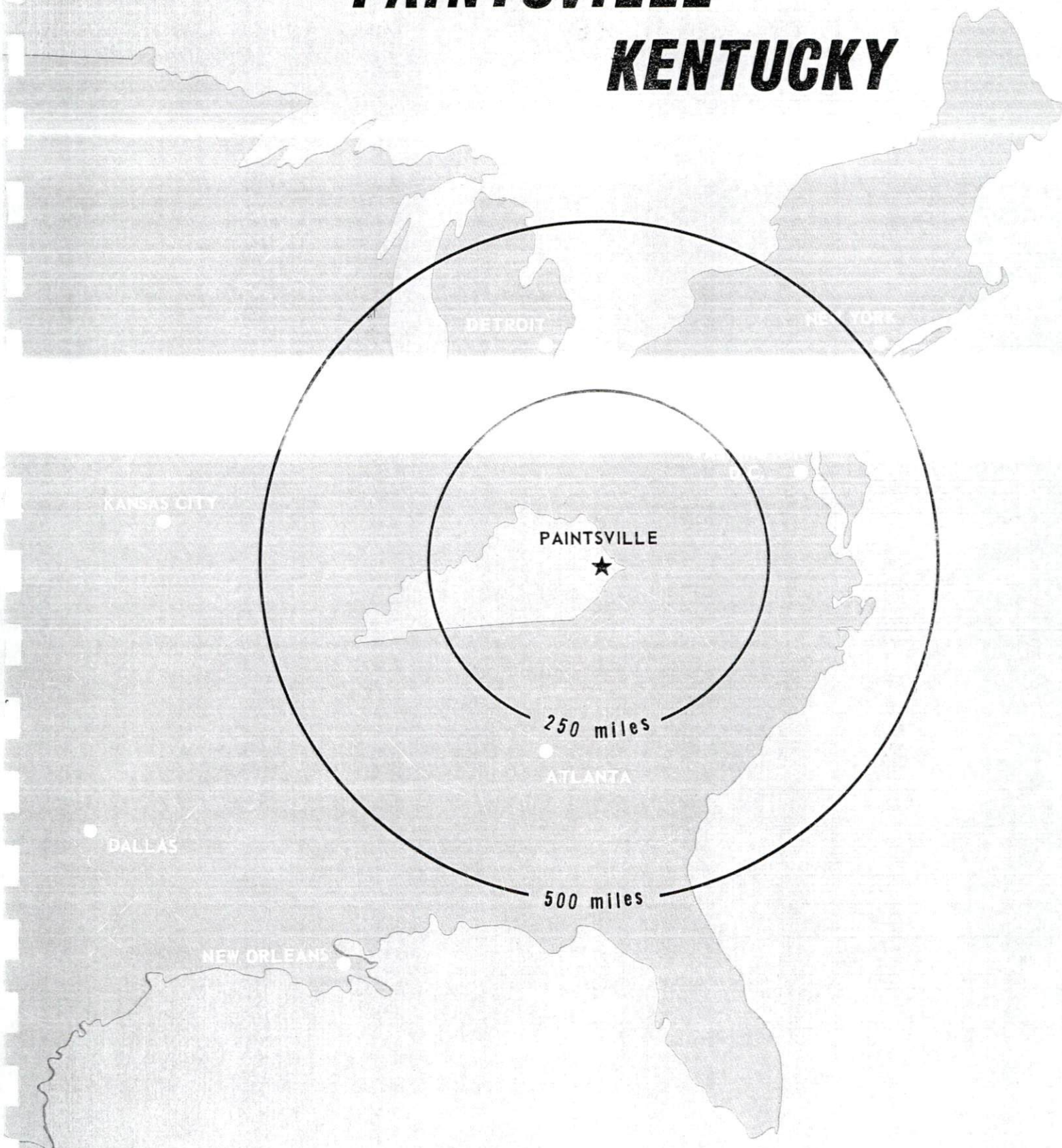
Recommended Citation

Kentucky Library Research Collections, "Industrial Resources: Johnson County - Paintsville" (1970). *Johnson County*. Paper 13.
https://digitalcommons.wku.edu/johnson_pty/13

This Report is brought to you for free and open access by TopSCHOLAR®. It has been accepted for inclusion in Johnson County by an authorized administrator of TopSCHOLAR®. For more information, please contact topscholar@wku.edu.

INDUSTRIAL RESOURCES

PAINTSVILLE ***KENTUCKY***



PAINTSVILLE INDUSTRIAL SITES

1970

PAINTSVILLE INDUSTRIAL SITES

1970

For additional information concerning the following sites, contact Mr. Allan Perry, Editor of Paintsville Herald, Paintsville, Kentucky; or the Kentucky Department of Commerce, Frankfort, Kentucky.

SITE #1: ACREAGE AND TOPOGRAPHY: 30 acres, level land
LOCATION: One-half mile from southern city limits of Paintsville
HIGHWAY ACCESS: Unpaved county road to Kentucky Highway 1270, one-half mile east of site
RAILROADS: Not rail served
WATER: Paintsville Water Company
SIZE LINE: 8-inch
GAS: Paintsville Gas Company
SIZE LINE: 4-inch
ELECTRICITY: Kentucky Power Company
SEWERAGE: Not available at present
OPTIONED BY: Paintsville Area Chamber of Commerce

SITE #2: ACREAGE AND TOPOGRAPHY: 26 acres, level land
LOCATION: In the city limits of Paintsville
ZONING: Industrial
HIGHWAY ACCESS: Paved street one-half mile to Kentucky Route 40, U. S. Route 23
RAILROADS: Chesapeake & Ohio Railway adjacent to site
WATER: Paintsville Water Company
SIZE LINE: 8-inch
GAS: Paintsville Gas Company
SIZE LINE: 2-inch
ELECTRICITY: Kentucky Power Company
SEWERAGE: Paintsville Sewer System
OWNERSHIP: Chesapeake & Ohio Railway

LEGEND:

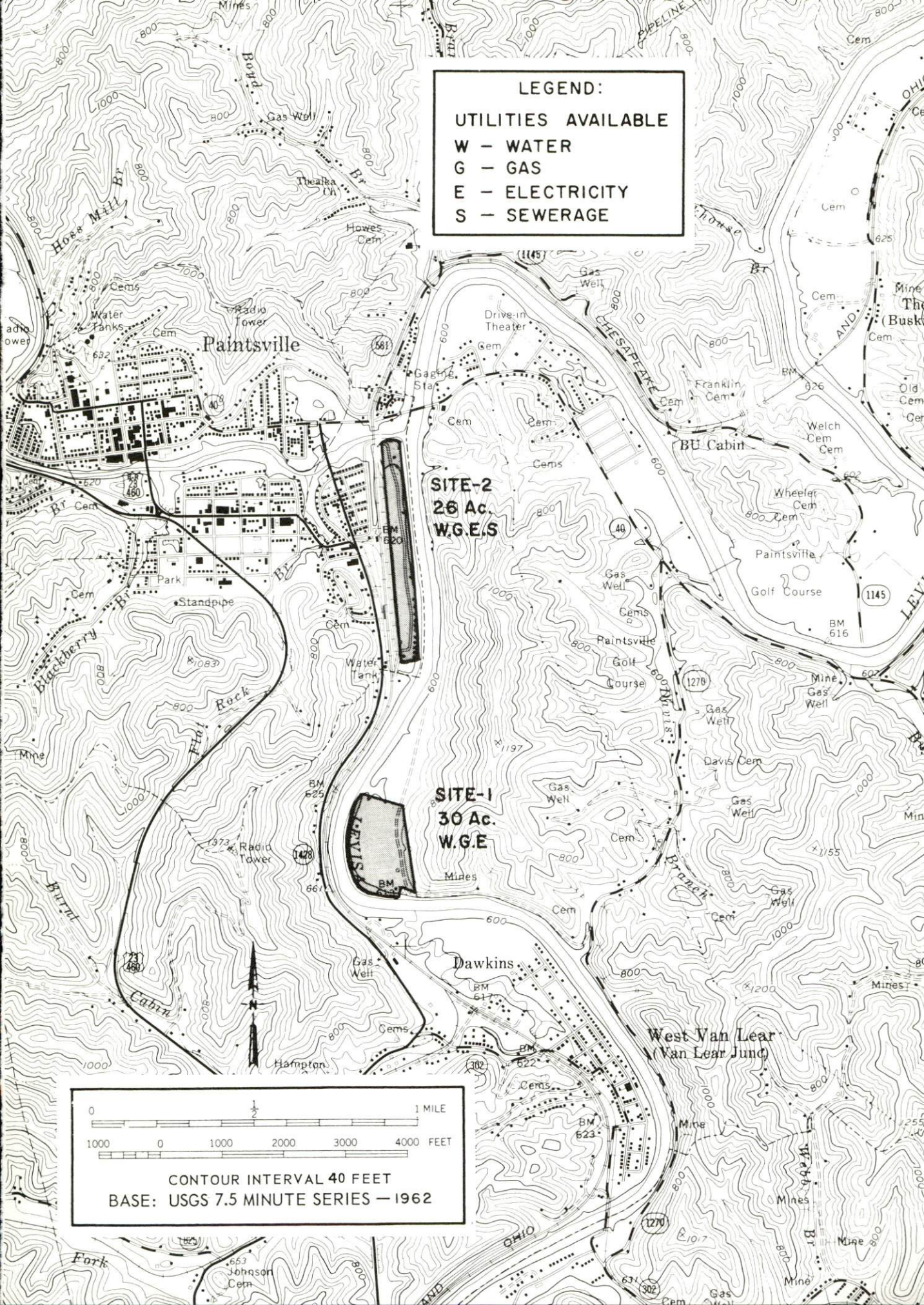
UTILITIES AVAILABLE

W - WATER

G - GAS

E - ELECTRICITY

S - SEWERAGE



SITE-2
26 Ac.
W.G.E.S

SITE-1
30 Ac.
W.G.E

CONTOUR INTERVAL 40 FEET
BASE: USGS 7.5 MINUTE SERIES - 1962

INDUSTRIAL RESOURCES
PAINTSVILLE, KENTUCKY

Prepared by
The Kentucky Department of Commerce
in cooperation with
The Paintsville Chamber of Commerce

1970

This copy has been prepared by the Kentucky Department of Commerce,
Division of Research and Planning, and the cost of printing paid from
state funds.

TABLE OF CONTENTS

<u>Chapter</u>	<u>Page</u>
INDUSTRIAL SITES	i
PAINTSVILLE, KENTUCKY - A RESOURCE PROFILE	1
THE LABOR MARKET	4
Population Trends	4
General Employment Characteristics, 1969	4
Manufacturing Employment Trends by Industry	4
Paintsville Manufacturing Firms, Their Products and Employment	5
Wage Rates for Selected Occupations	5
Labor Organizations	6
Current and Future Labor Supply	6
Total Personal Income	6
Per Capita Personal Income	6
EDUCATION	7
Public Schools	7
Parochial Schools	7
Vocational Schools	7
Colleges and Universities	8
TRANSPORTATION	9
Rail	9
Truck Service	9
Air	10
Bus	10
Taxi	10
Rental Services	10
POWER AND FUEL	11
Electricity	11
Natural Gas	11
WATER AND SEWERAGE	12
Water	12
Sewerage	12

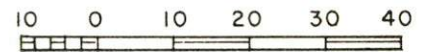
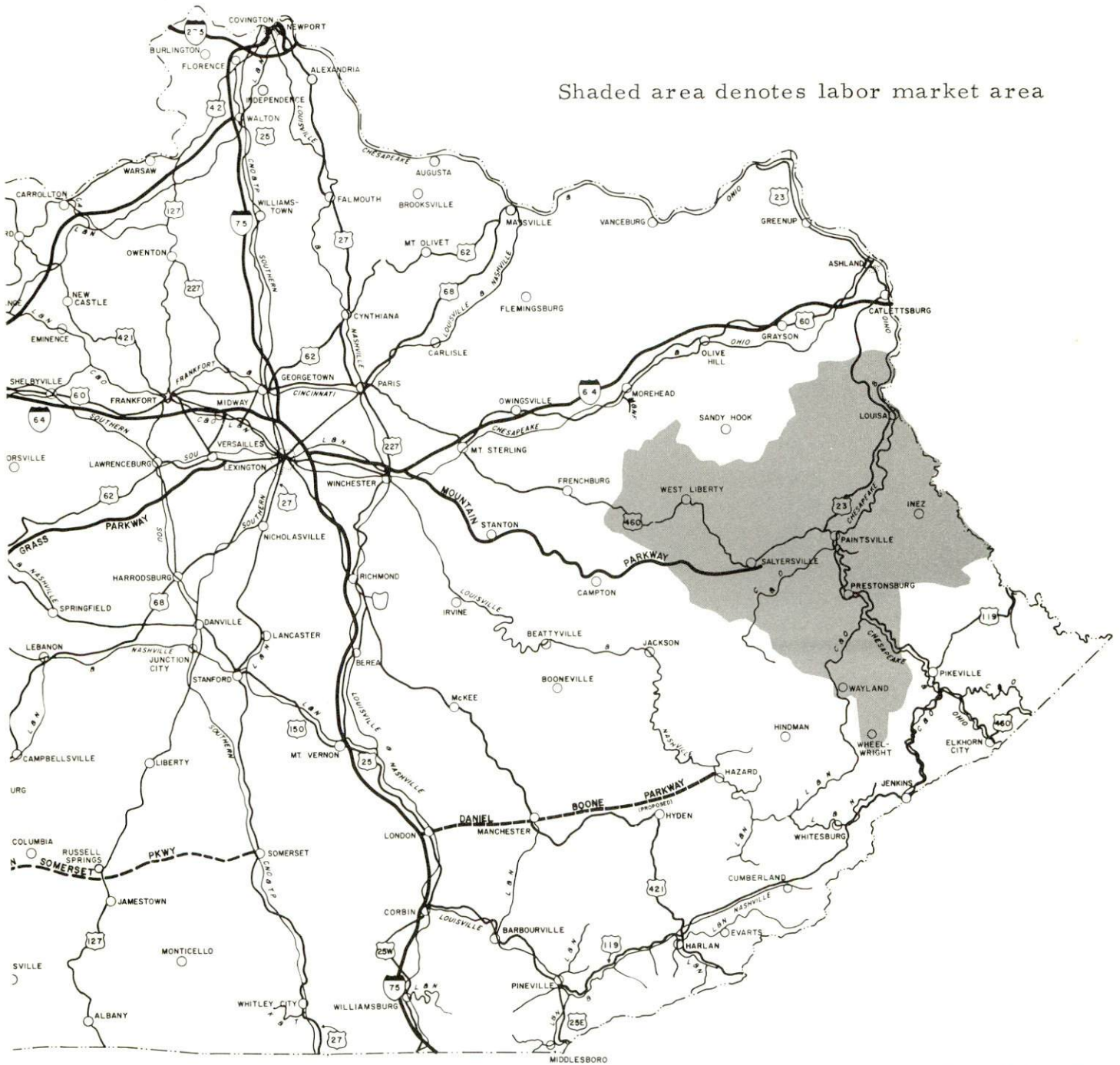
<u>Chapter</u>	<u>Page</u>
LOCAL GOVERNMENT	13
City	13
County	13
Assessed Value of Property - 1969	13
Local General Property Tax Rates Per \$100 of Assessed Valuation - 1970	13
Planning and Zoning	15
Safety	15
Police	15
Fire	15
Sanitation	15
HEALTH	16
Hospitals	16
Nursing Homes	16
Public Health	16
OTHER LOCAL FACILITIES	17
Communications	17
Library Services	17
Religious Institutions	17
Financial Institutions	19
Hotels and Motels	19
Clubs and Organizations	19
RECREATION	20
Local	20
Area	20
AGRICULTURE - NATURAL RESOURCES - CLIMATE	21
Agriculture	21
Natural Resources	21
Climate	21
HISTORY	22



AMERICAN STANDARD CORPORATION
PAINTSVILLE, KENTUCKY

PAINTSVILLE LABOR MARKET AREA

Shaded area denotes labor market area



GRAPHIC SCALE IN MILES

PAINTSVILLE, KENTUCKY - A RESOURCE PROFILE

Location

Paintsville, the county seat of Johnson County, is located in the east central portion of the Eastern Coal Field Region of Kentucky. Paintsville is 200 miles east of Louisville, Kentucky, and 180 miles southeast of Cincinnati, Ohio. The population of Paintsville is 3,738 and the population of Johnson County is 16,845.

The Economic Framework

Total employment in Johnson County averaged 4,100 in 1969 with manufacturing providing 200 of these jobs, trade and services 2,235, government 1,200, and more than 100 in mining. During the first nine years of the decade, manufacturing increased by approximately 120 percent. Major industrial products are plumbing products and apparel.

Per capita income in the county in 1968 was \$1,415. Between 1959 and 1968, per capita personal income in the county increased 74 percent.

The Paintsville labor market area includes Johnson and the five surrounding counties of Floyd, Lawrence, Magoffin, Martin, and Morgan. Area employment totals 20,600 including 2,100 in agriculture, 4,630 in trade and services, 4,100 in government, and 2,855 in mining and quarrying. Manufacturing furnishes 1,600 jobs. Area industrial employment has more than tripled since 1959 with sharpest gains in the machinery and metal products, apparel, textiles, and leather industries.

Despite important industrial gains in recent years, the area still has a deficit of 7,374 manufacturing jobs when measured against the national industrial employment-population ratio. This indicates an area where the potential for additional manufacturing production is excellent.

Resources For Growth

1. There is a current estimated labor supply of 5,175 men and 7,400 women available for industrial jobs in the labor market area. In addition, 6,500 young men and 6,140 young women will become 18 years of age by 1976 and potentially available for work.

2. The local transportation capability is good. The Chesapeake and Ohio Railway System provides the county with a variety of services. U.S. Highway 23, a two-lane north-south "AAA" trucking route, serves the county. The Mountain Parkway is only 13 miles distant, and I-64 is 60 miles distant. The Paintsville-Prestonsburg Airport has a 2,800-foot paved runway capable of accommodating light aircraft. Commercial air service is available at Tri-State Airport, only 50 miles away at Kenova, West Virginia.

3. Electricity is available in large quantity from the Kentucky Power Company, which has a major generating plant only 25 miles away, and from the Big Sandy Rural Electric Cooperative. Natural gas service is available. The water supply from the Levisa Fork of Big Sandy River is more than adequate for continued growth.

4. Industrial sites - Paintsville has two sites available for industrial use, and is attempting to develop additional land.

5. Education is an important growth asset for Johnson County. Two public school systems, the county system and the Paintsville Independent System, offer a full curriculum, and two senior and three junior colleges are located within 50 miles of the county.

The Mayo Area Vocational School is located in Paintsville and offers training in 20 different courses.

Community Programs for Improvement

Paintsville was named an All Kentucky City for 1969. The award was the result of successful community programs. The city and county are actively continuing their programs for community improvement.

Recent community improvements include: a new public library; a new \$2,000,000 county high school; and a new \$650,000 addition to the Mayo Area Vocational School.

Improvements underway include: a new vocational rehabilitation center; a new county water district; a 40-unit housing project; modernization of Route 23 to the south; a new county graded school; a new \$5,395,000 Highland Regional Hospital; and direct distance dialing service.

Improvements being planned include: a new street program improvement; new subdivision; Paint Creek Dam and Reservoir; a telephone cable from Paintsville to Prestonsburg; and direct distance dialing service in the county.

Recreation, Entertainment, and Livability

The city operates a park and playground which covers a 16-acre area inside the city limits. Facilities include a modern swimming pool with separate wading pool and brick bathhouse, three all-weather tennis courts, all-weather basketball and volleyball courts, lighted softball and baseball diamonds, croquet and horseshoe courts, and picnic tables and grills. A full-time park supervisor is employed during the summer months.

Paintsville also has an 18-hole golf course and modern country club. The facilities of this club are open to the citizens of Paintsville and neighboring towns and to tourists. Several notable golf tournaments are held there each year.

A stadium owned by the Paintsville Independent School System is the site for football games, an annual horse show and events connected with the annual Apple Festival. The Festival, held in October of each year, brings 20,000 visitors to the city.

Jenny Wiley State Resort Park, 12 miles distant, provides 1,700 acres of water recreation on Dewey Lake, surrounded by 12,000 acres of forest. The facilities include a lodge, cottages, camping areas, sky lift and amphitheater. The recreational facilities include boating, swimming, fishing, golfing, hiking, riding, shuffleboard and picnicking.

THE LABOR MARKET

POPULATION TRENDS^{1/}

Area	Population			Percent Change	
	1970	1960	1950	1960-70	1950-60
Paintsville	3,738	4,025	4,309	- 7.1	- 6.6
Labor Market Area	90,671	105,937	130,904	- 14.4	- 19.1
Johnson County	16,845	19,748	23,846	- 17.2	- 17.2
Floyd County	34,751	41,642	53,500	- 16.5	- 22.2
Lawrence County	10,407	12,134	14,418	- 14.2	- 15.4
Magoffin County	9,782	11,156	13,839	- 12.3	- 19.4
Martin County	9,150	10,201	11,677	- 10.3	- 12.6
Morgan County	9,736	11,056	13,624	- 11.9	- 18.8

GENERAL EMPLOYMENT CHARACTERISTICS, 1969^{2/}

Major Employment Group	Employment	
	Johnson County	Labor Market Area
TOTAL	4,100	20,600
Agricultural	300	2,100
Nonagricultural	3,800	18,500
Manufacturing	200	1,602
Trade and Services	2,237	4,629
Government	1,200	4,100
Mining and Quarrying	100+	2,855

MANUFACTURING EMPLOYMENT TRENDS BY INDUSTRY MARCH 1960 AND 1970^{3/}

Industry	Johnson County			Labor Market Area		
	1970	1960	% Change	1970	1960	% Change
TOTAL	162	73	+121.9	1,648	369	+346.6
Food & Kindred Products	20	41	- 51.2	54	69	- 21.7
Apparel, Textiles, Leather	64	0		1,095	0	
Lumber & Furniture	42	18	+133.3	236	221	+ 6.8
Printing, Publishing, Paper	12	6	+100.0	35	22	+ 59.1
Machinery & Metal Products	0	0		141	36	+291.7
Other	24	8	+200.0	77	21	+266.7

PAINTSVILLE MANUFACTURING FIRMS,
THEIR PRODUCTS AND EMPLOYMENT ^{4/}

Firm	Product	Employment		
		Total	Male	Female
Adams Construction Co.	Ready mixed bituminous asphalt	24	24	0
American Standard Corp.	Plumbing products	250	164	86
Commercial Printing Co.	Job printing, offset printing, book publishing	4	2	2
Justice Industries	Charcoal	12	11	1
McGahan Feed Co.	Feed	6	5	1
Paintsville Outerwear, Inc.	Boys' and men's outerwear	70	10	60
Pratt Fruit Co.	Meat processing	4	3	1
Royal Crown Bottling Co.	Carbonated beverages	25	23	2
Sandy Valley Press, Inc.	Newspaper, job printing	10	8	2
Russell D. Wells	Machine shop	2	2	0

WAGE RATES FOR SELECTED OCCUPATIONS
PAINTSVILLE, KENTUCKY ^{5/}

Classification	Starting	Wages Per Hour	
		Maximum	Prevailing
<u>Production Employees</u>			
Assembler	\$1.75	\$1.85	\$1.75
Inspector	2.60	3.00	2.70
Production Laborer	1.75	1.85	1.80
Welder, Arc or Acetylene (Class-A)	1.95	2.50	2.25
<u>Service Employees</u>			
Electrician (Class-A)	\$1.75	\$3.30	\$2.50
Laborer	1.60	1.60	1.60
Machinist	1.75	3.30	2.50
Mechanic, Maintenance	1.75	2.75	2.25
Truck Driver, Industrial (Class-A)	1.75	3.00	2.25
<u>Office Employees</u>			
Bookkeeper	\$1.60	\$2.70	\$2.40
File Clerk	1.60	2.25	1.90
Receptionist	2.00	2.75	2.50
Secretary	2.00	3.00	2.50
Typist	2.00	2.80	2.40

LABOR ORGANIZATIONS

Union

Representing Workers at:

Teamsters

Royal Crown Bottling Co.

CURRENT AND FUTURE LABOR SUPPLY - PAINTSVILLE LABOR MARKET AREA

County	Current Labor Supply 1970 ^{6/}			Future Labor Supply by 1976 (Becoming 18 Years of Age) ^{7/}		
	Total	Male	Female	Total	Male	Female
Labor Market Area	12,573	5,173	7,400	12,637	6,495	6,142
Johnson	2,373	1,075	1,298	2,116	1,092	1,024
Floyd	4,160	1,231	2,929	5,135	2,618	2,517
Lawrence	1,725	810	915	1,274	669	605
Magoffin	1,635	833	802	1,458	731	727
Martin	1,264	568	696	1,394	725	669
Morgan	1,416	656	760	1,260	660	600

TOTAL PERSONAL INCOME^{8/}

Area	1968	1959	% Change
Johnson County	\$ 25,616,000	\$ 15,001,000	+70.8
Labor Market Area	130,405,000	79,055,000	+65.0
Kentucky	8,516,000,000	4,655,000,000	+82.9

PER CAPITA PERSONAL INCOME^{9/}

Area	1968	1959	% Change
Johnson County	\$1,415	\$ 812	+ 74.3
Labor Market Area	\$815 to 1,415	\$421 to 909	+73.6 to +115.9
Kentucky	2,645	1,552	+ 70.4

EDUCATION

Public Schools

	<u>Paintsville</u>	<u>Johnson County</u>
Total Enrollment	942	3,353
Elementary	488	2,366
High School	454	987
Student-Teacher Ratio	17-1	20-1
Elementary	18-1	22-1
High School	16-1	16-1
State Rating of High School	Standard	Comprehensive
Other Accreditations	Southern Association of Colleges and Schools	
Percent High School Graduates to College	55.7	20.4
Current Expenditures Per Pupil	\$513.01	\$395.37
Bonded Indebtedness, June 30, 1970	\$730,000	\$1,691,000

Parochial Schools

Total Enrollment	85
Student-Teacher Ratio	17-1

Vocational Schools

	<u>Nearest Area School</u>
Location	Mayo Area Vocational School Paintsville
Curriculum	Accounting Jr. Mgmt., Data Processing, General Clerical, Secretarial-Steno, Practical Nursing, Electronics (Communication), Electronics (Industrial), Tool & Die Design, Auto Body Repair, Auto Mechanics, Carpentry, Commercial Foods, Cosmetology,

Nearest Area School (Cont'd.)

Drafting, Electricity, Machine Shop,
Mine Machinery Mechanics, Printing,
Radio & TV Repair, Welding

Colleges and Universities

<u>Name</u>	<u>Area - Within 50 Miles</u>		<u>Highest Degree Conferred</u>
	<u>Location</u>	<u>Enrollment</u>	
Pikeville College	Pikeville	932	Baccalaureate
Prestonsburg Community College	Prestonsburg	428	Associate
Alice Lloyd College	Pippa Passes	276	Associate
Lees College	Jackson	386	Associate
Morehead State University	Morehead	6,460	Masters

TRANSPORTATION

Rail

Line serving Paintsville - Chesapeake and Ohio Railway System

Services - Freight, siding, switching, REA Express

RAILWAY TRANSIT TIME FROM PAINTSVILLE, KENTUCKY, TO: 10/

City	No. of Days		City	No. of Days	
	CL			CL	
Atlanta, Ga.	2		Los Angeles, Calif.	5	
Birmingham, Ala.	3		Louisville, Ky.	2	
Chicago, Ill.	1		Nashville, Tenn.	2	
Cincinnati, Ohio	1		New Orleans, La.	3	
Cleveland, Ohio	2		New York, N. Y.	3	
Detroit, Mich.	2		Pittsburgh, Pa.	3	
Knoxville, Tenn.	3		St. Louis, Mo.	2	

Truck Service

Company

Smith's Transfer
Corporation of Virginia
Hogan Storage & Transfer
Company
Point Express, Inc.

Home Office

Stanford, Virginia

Williamson, West Virginia
Charleston, West Virginia

HIGHWAY MILES AND TRUCK TRANSIT TIME IN DAYS FROM PAINTSVILLE, KENTUCKY, TO SELECTED MARKET CENTERS

City	Highway Miles	Delivery Time 11/ LTL TL		City	Highway Miles	Delivery Time LTL TL	
Atlanta, Ga.	453	3	2	Los Angeles, Calif.	2,298	7	7
Birmingham, Ala.	519	3	2	Louisville, Ky.	200	3	2
Chicago, Ill.	490	3	2	Nashville, Tenn.	360	3	2
Cincinnati, Ohio	180	2	1	New Orleans, La.	870	4	3
Cleveland, Ohio	403	3	2	New York, N. Y.	730	3	2
Detroit, Mich.	380	3	2	Pittsburgh, Pa.	300	3	2
Knoxville, Tenn.	255	3	2	St. Louis, Mo.	450	3	2

Air

	<u>Local</u>	<u>Nearest Commercial</u>
	Combs Airport	Tri-State Airport
Location:	Paintsville, Kentucky	Walker Long Field Kenova, West Virginia, (50 miles distant)
Runways:	1 paved	1 paved
Length:	2,800 feet	5,280 feet
Traffic		
Control:	Wind sock and Tetrahedron	
Lighting:	None	Beacon, runway
Services:	80-100 octane fuel; charter flight instructions; courtesy car; tie down; air ambulance	80-87-100-130 jet fuel; restaurants; storage; car rentals; limousine and taxi; Piedmont, Allegheny, Eastern, and Wright Airlines
<u>Bus</u>	Southern Greyhound Bus Lines Paintsville Bus Lines Vanhoose Bus Lines	
<u>Taxi</u>	7 companies - 24-hour service	
<u>Rental Services</u>	Automobile	

POWER AND FUEL

Electricity

Company serving Paintsville - Kentucky Power Company

Source of power - Kentucky Power Company

Total generating capacity - 1,080,000 KW

Industrial rates negotiated by - Kentucky Power Company,
Ashland, Kentucky

Company serving Johnson County - Big Sandy RECC

Source of power - East Kentucky Power Cooperative

Total generating capacity - 515,000 KW

Industrial rates negotiated by - Big Sandy RECC, Paintsville,
Kentucky

Natural Gas

Company serving - Paintsville City Gas System

Source of supply - Kentucky-West Virginia Gas Company

Size of transmission lines - 2, 3, and 6 inches

Distribution lines - 2, 3, and 4 inches

BTU content - 1,000; Specific gravity - .69

Distribution pressure - 12 oz to 16 psi

Rates

First	3,000 cu. ft. used per month	\$.68 per M cu. ft.
Next	17,000 cu. ft. used per month	.58 per M cu. ft.
Next	30,000 cu. ft. used per month	.48 per M cu. ft.
Next	50,000 cu. ft. used per month	.44 per M cu. ft.
Next	100,000 cu. ft. used per month	.39 per M cu. ft.
All over	200,000 cu. ft. used per month	.37 per M cu. ft.

WATER AND SEWERAGE

Water

Company serving Paintsville - Paintsville Water Works

Source - Big Sandy River

Treatment plant capacity - 1,000,000 gpd

Average daily consumption - 531,000 gallons

Peak daily consumption - 800,000 gallons

Type treatment - alum, lime, soda ash, chlorine, charcoal, fluoride

Storage capacity - 1,155,000 gallons

Average pressure - 85 to 110 psi

Average temperature - 76 degrees

Size mains - 6 and 8 inches

MONTHLY WATER RATES FOR WHOLESALE AND INDUSTRIAL CONSUMERS

2,000 gallons	\$ 2.25 (Minimum bill)
5,000 gallons	4.95
10,000 gallons	8.95
25,000 gallons	19.45
50,000 gallons	34.45
100,000 gallons	59.45
All over 100,000 gallons	.40 per M gallons

Surface water sources - Levisa Fork of Big Sandy River - Paint Creek

Average discharge - about 2,400 cfs - Levisa Fork about 120 cfs

Expected ground water yield - northwest half 50 to 200 gpm, southeast
half 5 to 50 gpm

Yield along main streams - as above

Sewerage

Company serving Paintsville - Paintsville Sewerage System

Design capacity - 730,000 gpd

Average daily flow - 400,000 gallons

Treatment - primary

Type treatment - clarifier, digester, drying beds

Treated effluent discharged into - Big Sandy River

Size of sanitary mains - 8-inch

Size of storm mains - 18 and 24 inches

Rates - 70 percent of monthly water bill

LOCAL GOVERNMENT

City

Structure - Mayor - 4-year term; 6 councilmen - 2-year terms
Budget 1969 - General Fund \$158,736; Water and Sewer Fund \$167,591
Fees and licenses - occupational license varies from \$5 to \$200 annually

County

Structure - County Judge - 4-year term; 6 magistrates - 4-year terms
Budget 1969-70 - General Fund \$102,400; Road Fund \$29,400

Assessed Value of Property - 1969

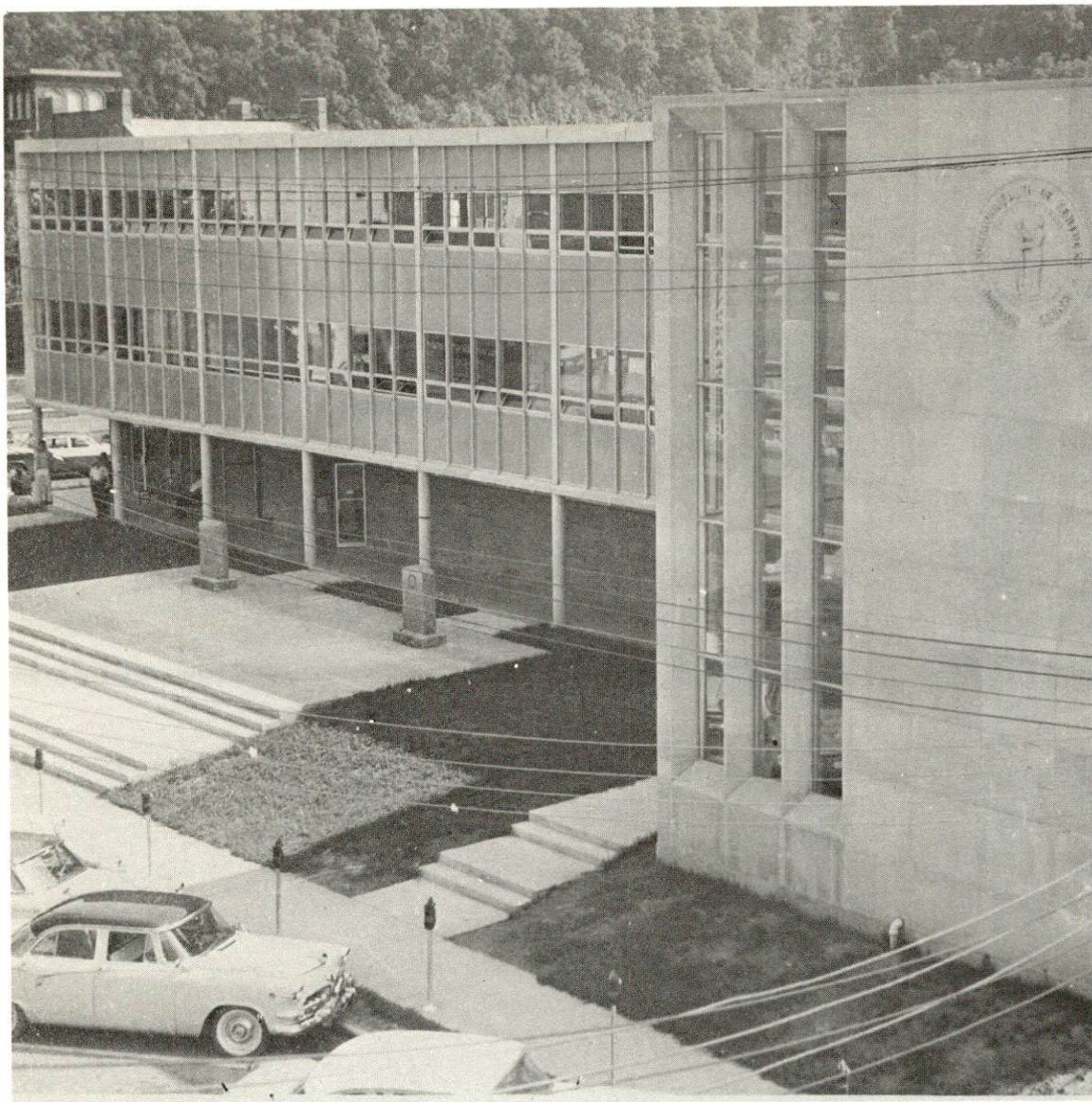
<u>Classes of Property*</u>	<u>Paintsville</u>	<u>Johnson County</u>
Real Estate	\$16,529,750	\$40,713,739
Tangibles	7,847,155	12,108,632
Public Service	2,513,593	12,472,762

Local General Property Tax Rates Per \$100 of Assessed Valuation - 1970 ^{12/}

<u>Taxing Unit**</u>	<u>Paintsville</u>	<u>Johnson County</u>
State	\$.015	\$.015
County	.256	.256
School	.675	.626
City	.1933	
Total	\$ 1.1393	\$.897

*Property assessed at 100 percent of fair value.

**Manufacturing machinery, raw materials inventories and goods in process inventories are not subject to local tax. State rate is only \$0.15 per \$100.



JOHNSON COUNTY
COURTHOUSE



JOHNSON COUNTY HEALTH DEPARTMENT

Planning and Zoning

Agency - Paintsville Planning and Zoning Commission
Plans completed - Comprehensive Plan, Zoning Ordinance,
Subdivision Regulations, Neighborhood Analysis

Safety

<u>Police</u>	<u>Paintsville</u>	<u>Johnson County</u>
Total staff	8	4
Patrol cars	2	3
<u>Fire</u>		
American Insurance Assoc- iation Fire Rating	6	
Full-time staff	4	
Volunteers	23	
Equipment:		
750-gpm pumpers	1	
500-gpm pumpers	2	
utility truck	1	

Sanitation

	<u>Paintsville</u>
Type service	municipal
Cost:	
residential	\$2.00 per month
business	based on number of pickups
Collection frequency:	
residential	once weekly
business	as required
Trash pickup	yes
Disposal method	land fill

HEALTH

Hospitals

<u>General Hospital</u>	<u>Location</u>	<u>Beds</u>
Prestonsburg General Hospital	Prestonsburg (14 miles)	50
Paintsville Hospital	Paintsville	72

Paintsville Hospital

General hospital facilities - X-ray, emergency room, delivery room, laboratory, nursery, obstetrical room

Medical staff - 8 doctors, 5 registered nurses, 22 graduate licensed practical nurses, 3 licensed practical nurses

Prestonsburg General Hospital

General hospital facilities - X-ray, emergency room, laboratory, delivery room, nursery, premature nursery, obstetrical room, EKG

Medical staff - 7 doctors, 8 registered nurses, 26 graduate licensed practical nurses, 2 licensed practical nurses

Nursing Homes

	<u>Number</u>	<u>Beds</u>
Extended care homes	1	50
Personal care homes	2	80

Public Health

Facility - Johnson County Health Department

Staff - 1 administrative assistant and sanitarian, 1 clerk, 3 part-time registered nurses, 1 part-time clerk

Budget 1969-70 - \$34,612

OTHER LOCAL FACILITIES

Communications

Telephone - South Central Bell Telephone Company (Paintsville)
Foothills Rural Telephone Cooperative Corporation, Inc.
(Johnson County)
Services - standard

Telegraph - Western Union
Services - standard

Postal - U. S. Post Office - Paintsville
Class - First
Mail received - twice daily
Mail dispatched - twice daily

Newspapers - The Paintsville Herald
Weekly and circulation - 3,950
Other papers received from - Ashland, Lexington, and Louisville,
Kentucky; Huntington, West Virginia

Radio - Paintsville, WSIP
Stations received from - Huntington, West Virginia; Lexington,
Ashland, and Louisville, Kentucky

Television -
Reception from - Huntington, West Virginia; Charleston, West Virginia
Kentucky Educational Television - Channel 38, Morehead State
University, Morehead, Kentucky

Library Services

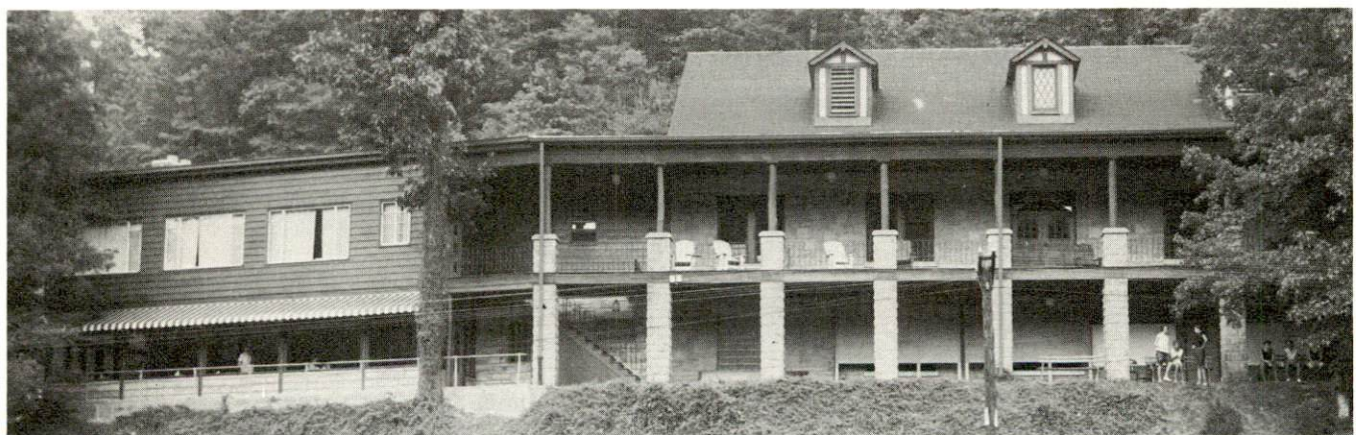
Public Libraries - Johnson County Public Library
Size collection - 23,000 volumes
Circulation, 1969 - 99,500
Services - records, art, film, story hour

Religious Institutions

Number of churches - 14
Denominations - Baptist, Church of Christ, Church of God, Methodist,
Christian, Pentecostal and Roman Catholic



MAYO METHODIST CHURCH



PAINTSVILLE COUNTRY CLUB

Financial Institutions

<u>Banks</u>	<u>Statement as of June 30, 1970</u>	
	<u>Assets</u>	<u>Deposits</u>
Citizens National Bank	\$16,234,770	\$14,463,901
First National Bank of Paintsville	9,243,231	8,357,273
<u>Savings and Loan Association</u>	<u>Assets</u>	<u>Shared Accounts</u>
First Federal Savings & Loan Association	\$12,824,828	\$11,076,400

Hotels and Motels

<u>Number</u>	<u>Units</u>
6	163

Clubs and Organizations

Business and Civic - Chamber of Commerce, Kiwanis Club, Rotary Club, Toastmaster's International, and Jaycees

Fraternal - Masons, Elks, IOOF, American Legion, Eagles, and DAV

Women's - Paintsville Women's Club, Rebekah, American Legion Auxiliary, DAR, Eastern Star, Homemakers, Business & Professional Women's Club, Beta Sigma Phi, Garden Club, Jaycettes, Junior Woman's Club

Youth - Boy Scouts, Cub Scouts, Brownies, Girl Scouts, FFA, FHA, Rainbow Club, 4-H Clubs, Little League and Pony League baseball

RECREATION

Local

Public Recreation Facilities

Supervised program - yes

Park - 1

Playground - 1

Swimming pool - 1

Tennis courts - 3

Baseball diamonds - 2

Football field - 1

Private Recreation Facilities

Country club - 1

Golf course - 1

Movie theaters - 1 indoor and 1 drive-in

Bowling center - 1

Tourist Attractions

Apple Day Festival

Jenny Wiley's Grove

Cultural Events

Jenny Wiley State Resort Park - summer theater

Area (Within 25 miles)

Jenny Wiley State Resort Park

Dewey Lake

AGRICULTURE - NATURAL RESOURCES - CLIMATE

Agriculture 13/

	<u>Johnson County</u>	<u>Labor Market Area</u>
Total land area (acres)	168,960	1,274,240
Percent of area in farm land	31.4	42.5
Number of farms	647	5,072
Average size of farms (acres)	112.4	106.7
1964 value of all farm products	\$ 394,080	\$ 6,578,651
Value per farm	918	1,297
Total crop sales	386,265	4,514,180
Total livestock & livestock products	204,015	2,026,883
1967 agricultural production included:		
Burley tobacco (lbs.)	604,000	6,335,000
Corn (bu.)	50,000	536,000
Cattle and calves (number)	2,800	29,400
Hogs and pigs (number)	1,200	8,900
Milk production (1966) (lbs.)	2,175,000	33,955,000

Natural Resources

Principal mineral resources	Coal, petroleum
Other mineral resources	Shales, sandstone, some limestone
Acres of commercial forest land	136,700
Most abundant tree species	Red oak, white oak, hickory, yellow poplar, yellow pine, beech, maple

Climate 14/

	<u>Johnson County</u>
Temperature	
Annual mean (30-year record)	56.8 degrees
Average annual 1969	53.9 degrees
Record highest June, 1966 (8-year record)	95.0 degrees
Record lowest January, 1966 (8-year record)	-15.0 degrees
Seasonal heating degree-days (30-year record)	4,143
Precipitation	
Mean annual total (30-year record)	41.06 inches
Mean annual snow and sleet (32-year record)	16.1 inches
Total precipitation 1969	43.77 inches
Mean number days precipitation (24-year record) (.01 inches or more)	132
Average number days thunderstorms (26-year record)	46
Prevailing winds (9-year record)	West-southwest

HISTORY

Johnson County, the ninety-seventh county formed in the state, dates from 1843. It was taken from Floyd, Lawrence, and Morgan Counties. Its soil is fertile in the valleys which is sandy in texture. The Levisa Fork of the Big Sandy River and its tributaries drain the county. These streams have chiseled that section of the Cumberland Plateau into a network of low hills and shallow valleys. The average elevation of the county is under seven hundred feet above sea level, while one hundred miles to the south the elevation is a thousand feet higher. Although the geographical location of Johnson County is in Eastern Kentucky, it is not a mountain county nor do the people who live there regard themselves as living in the mountains. The Cumberland Plateau stretches from the Cumberland Mountains on the south, northward across the county to the rugged lowlands along the Ohio River.

Many explorations and discoveries were made west of the Allegheny Mountains before any settlement was begun. The first man to traverse Johnson County territory was Dr. Thomas Walker who was in the employ of the Loyal Land Company. Soon several members of the Long Hunters came into the area. Five miles upstream from Paintsville is a fifty-acre tract now known as Block House Bottom, where Matthias Harman built a hunting lodge. Several years later in 1787 he returned and built a fort at present day East Point. It was from this station that settlers went out to establish Paintsville, Prestonsburg, Pikeville, and other nearby communities. It was also to this fort that Jenny Wiley, the pioneer heroine of Eastern Kentucky, fled after a dramatic escape from the Indians. Her name is preserved today in the Jenny Wiley State Park on Dewey Lake a few miles over in Floyd County.

Johnson County was named for Colonel Richard M. Johnson of Scott County. He was educated at Transylvania University, passed the bar examination at the age of nineteen, served in the State Assembly at the age of twenty-two, was elected to the National Congress when only twenty-four (he took his seat a few days after he reached twenty-five), was a United States Senator, and in 1836 was named the vice-president elect. His selection as vice-president was the only time in the nation's history the Senate has been called upon to decide who should serve in that office. After he retired from national prominence, Johnson served several terms in the Kentucky General Assembly, where he was serving at the time of his death in 1850.

Paintsville, the county seat, dates from 1810 and was named for Paint Creek, which flows through the town. Early settlers found many of the large trees along the creek stripped of their bark and embellished with drawings of birds and animals, painted in red and black on the smooth undertrunks. They also found odd figures of buffalo and deer painted on the clifflike sandstones along the stream. The town was settled by families from East Point who were searching for fertile lands. During the 1820's and 1830's the bottom lands in the immediate vicinity were divided and subdivided and laid off in residential and commercial lots. Soon afterwards some storehouses were built and Paintsville became a trading center.

William N. Randolph and John B. Wheatley were school teachers in the county immediately after its formation. John C. C. Mayo, who lived in Paintsville around the turn of the twentieth century, originated the idea of mining coal on a large scale. His dream was realized when a railroad was built into the area. Thomas J. Mayo served a term in the House of Representatives at Frankfort a few years after the Civil War.

SOURCES OF INFORMATION

- 1/ U. S. Department of Commerce, Bureau of the Census, Census of Population, 1950, 1960, 1970. (Preliminary).
- 2/ Kentucky Department of Economic Security, Division of Research and Statistics.
- 3/ Kentucky Department of Economic Security, Number of Workers in Manufacturing Industries Covered by Kentucky Unemployment Insurance Law Classified by Industry and County, March 1960, March 1970.
- 4/ Kentucky Department of Commerce, 1970 Kentucky Directory of Manufacturers.
- 5/ Kentucky Department of Economic Security, Division of Employment Service, Prestonsburg Office.
- 6/ Kentucky Department of Economic Security, Kentucky Labor Supply Estimates by County, January 1970.
- 7/ Kentucky Department of Commerce, Future Labor Supply by 1976.
- 8/ University of Kentucky, Office of Development Services and Business Research, Total Personal Income for Kentucky.
- 9/ University of Kentucky, Office of Development Services and Business Research, Per Capita Income in Kentucky.
- 10/ Chesapeake and Ohio Railway Company, Baltimore, Maryland.
- 11/ Point Express, Inc., Charleston, West Virginia.
- 12/ Johnson County Tax Commissioner.
- 13/ U. S. Department of Commerce, Bureau of the Census, Census of Agriculture, 1964. U. S. Department of Agriculture and Kentucky Department of Agriculture, Kentucky Agricultural Statistics, 1968.
- 14/ U. S. Department of Commerce, Environmental Science Services Administration, Climatological Data, 1969.

All other information was obtained from governmental offices, local businesses and organizations.