

1973

Industrial Resources: Lyon County - Eddyville and Kuttawa

Kentucky Library Research Collections
Western Kentucky University, spcol@wku.edu

Follow this and additional works at: https://digitalcommons.wku.edu/lyon_cty



Part of the [Business Administration, Management, and Operations Commons](#), [Growth and Development Commons](#), and the [Infrastructure Commons](#)

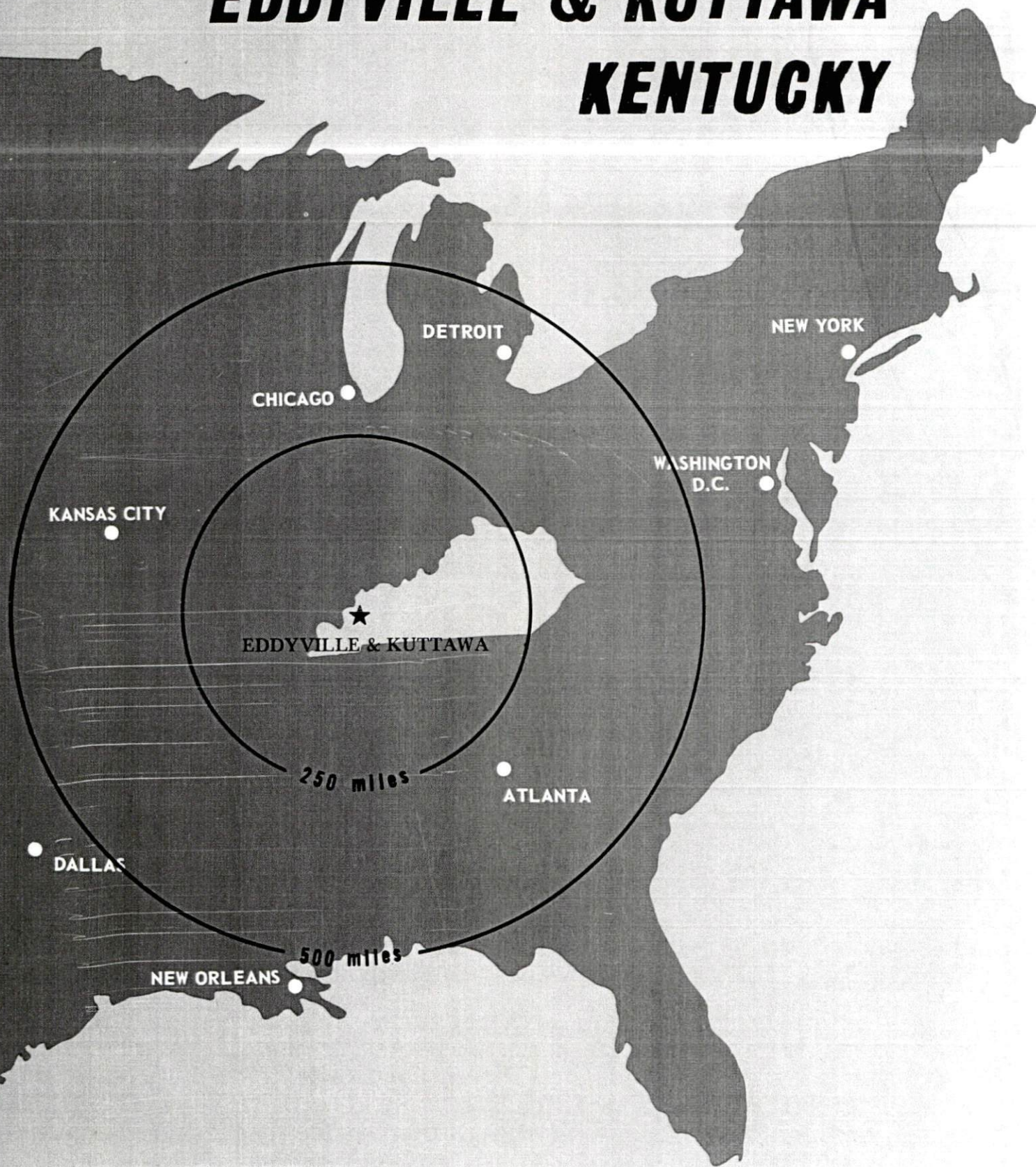
Recommended Citation

Kentucky Library Research Collections, "Industrial Resources: Lyon County - Eddyville and Kuttawa" (1973). *Lyon County*. Paper 11.
https://digitalcommons.wku.edu/lyon_cty/11

This Report is brought to you for free and open access by TopSCHOLAR®. It has been accepted for inclusion in Lyon County by an authorized administrator of TopSCHOLAR®. For more information, please contact topscholar@wku.edu.

INDUSTRIAL RESOURCES

EDDYVILLE & KUTTAWA ***KENTUCKY***



LYON COUNTY, KENTUCKY

EDDYVILLE-KUTTAWA INDUSTRIAL SITES

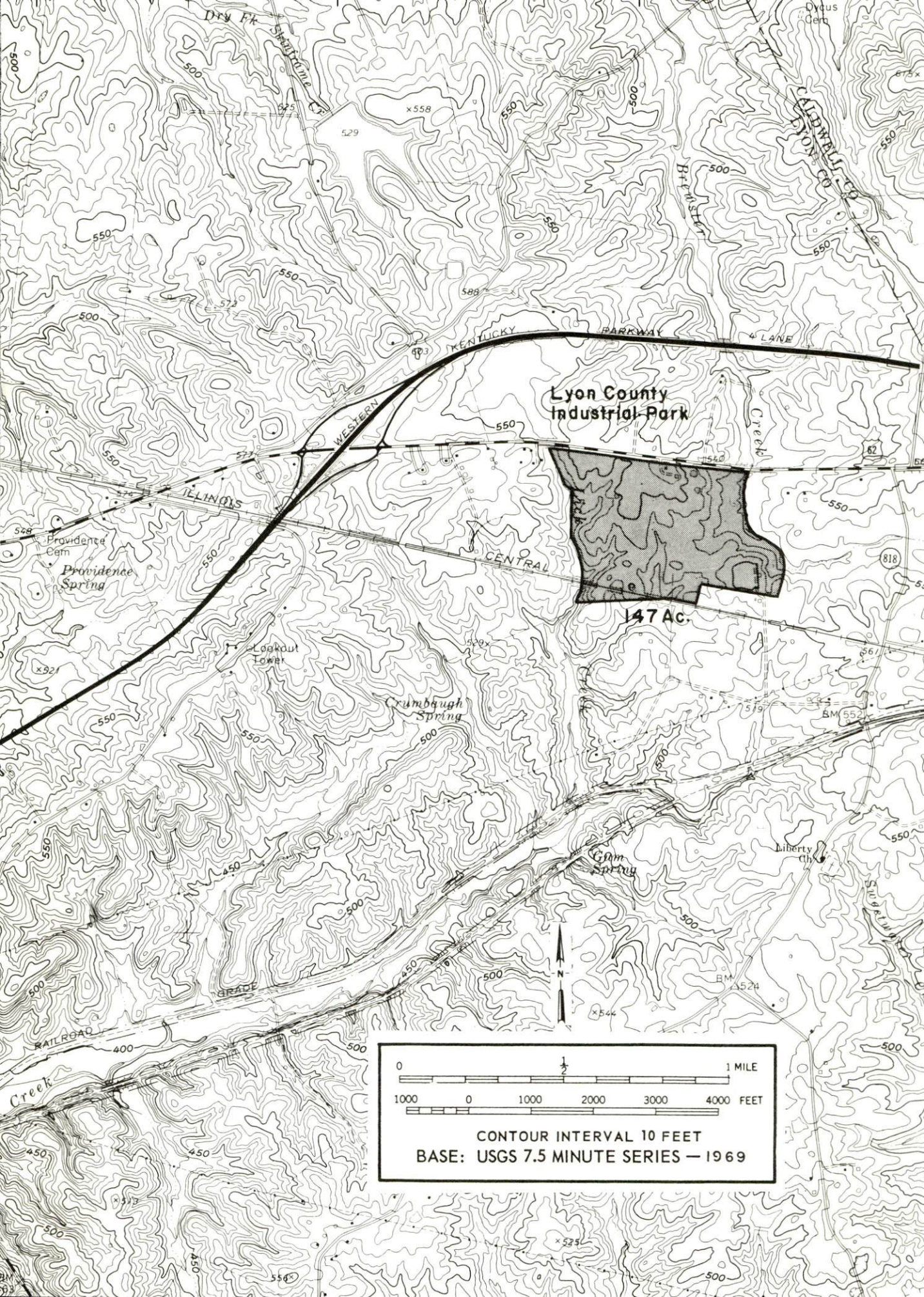
For more information about the following sites, contact Mr. Eugene Denny, Eddyville, Kentucky; or the Kentucky Department of Commerce, Capital Plaza Office Tower, Frankfort, Kentucky 40601.

Eddyville:

LYON COUNTY INDUSTRIAL PARK
ACREAGE: 147 acres
LOCATION: 4 miles east of Eddyville
ZONING: None
HIGHWAY ACCESS: Fronts on U. S. 62
RAILROAD: Illinois Central Gulf Railroad
WATER: Eddyville Water Works
 SIZE LINE: 6-inch line 3 miles from site
GAS: Western Kentucky Gas Company
 SIZE MAIN: 2-inch main 3.6 miles west of Park on
 U. S. 62-641
ELECTRICITY: Kentucky Utilities Company
SEWERAGE: Package plant needed
OPTIONED BY: KELL Industrial Foundation

Kuttawa

SITE #9: ACREAGE: 118 acres
LOCATION: Three-fourths of a mile north of Kuttawa
ZONING: None
HIGHWAY ACCESS: Fronts on Kentucky 819
RAILROAD: Illinois Central Gulf Railroad
WATER: Kuttawa Water & Sewer Department
 SIZE LINE: 6-inch line seven-tenths of a mile from
 site along U. S. 62-641; 8-inch line 1.2 miles from
 site along city street
GAS: Kuttawa Natural Gas System
 SIZE MAIN: 2-inch main across Kentucky 819 from site
ELECTRICITY: Henderson-Union RECC; Kentucky Utilities
 Company
SEWERAGE: Kuttawa Water & Sewer Department
 SIZE LINE: 8-inch line 1 mile south crosses
 U. S. 62-641
OWNERSHIP: Private

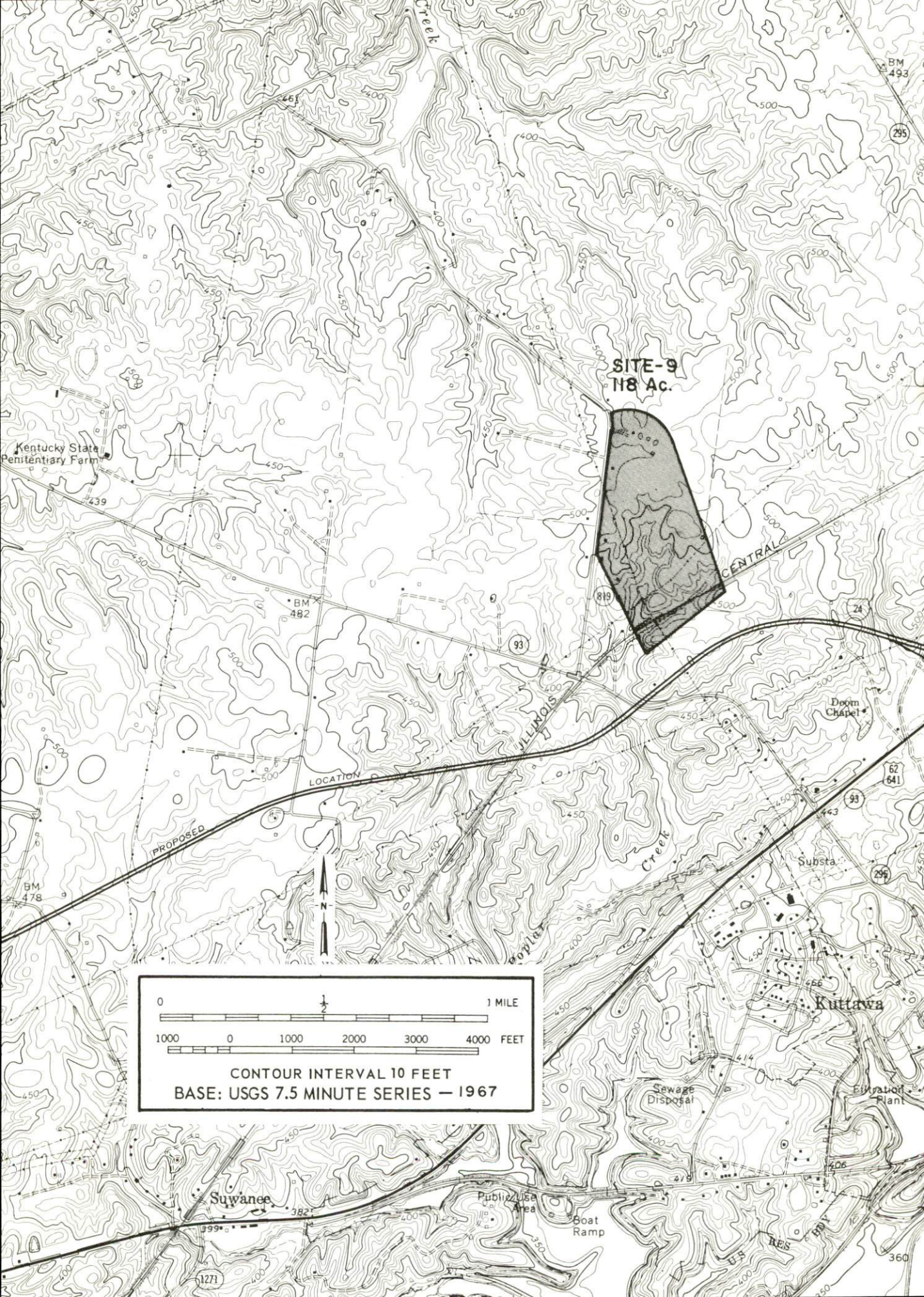


Lyon County
Industrial Park

147 AC.



CONTOUR INTERVAL 10 FEET
BASE: USGS 7.5 MINUTE SERIES - 1969



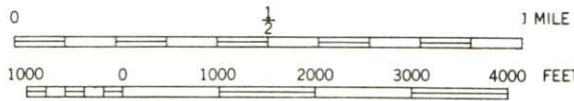
SITE-9
118 Ac.

Kentucky State
Penitentiary Farm

BM
482

LOCATION

PROPOSED



CONTOUR INTERVAL 10 FEET
BASE: USGS 7.5 MINUTE SERIES — 1967

Suwanee

Public Use Area

Boat Ramp

Sewage Disposal

Filtration Plant

Kuttawa

Doom Chapel

Substa.

BM
493

295

62
641

295

360

127

INDUSTRIAL RESOURCES
EDDYVILLE & KUTTAWA, KENTUCKY

Prepared by
The Kentucky Department of Commerce
in cooperation with
K. E. L. L. Chamber of Commerce

1973

This copy has been prepared by the Kentucky Department of Commerce,
Division of Research and Planning, and the cost of printing paid from
state funds.

TABLE OF CONTENTS

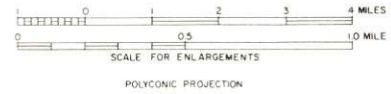
<u>Chapter</u>	<u>Page</u>
INDUSTRIAL SITES	i
EDDYVILLE-KUTTAWA, KENTUCKY - A RESOURCE PROFILE	1
THE LABOR MARKET.	4
Population Trends	4
General Employment Characteristics	4
Manufacturing Employment Trends by Industry	4
Eddyville-Kuttawa Manufacturing Firms, Their Products, and Employment.	5
Wages.	5
Labor Organizations	5
Current and Future Labor Supply.	6
Per Capita Personal Income.	6
TRANSPORTATION	7
Rail.	7
Truck Service	7
Air	8
Water	8
Bus	8
Rental Services	8
POWER AND FUEL	9
Electricity.	9
Natural Gas	9
Other Fuels	9
WATER AND SEWERAGE	10
Water	10
Sewerage	11
LOCAL GOVERNMENT	12
City.	12
County.	12

<u>Chapter</u>	<u>Page</u>
Assessed Value of Property - 1972	12
Local General Property Tax Rates Per \$100 of	
Assessed Valuation - 1972	12
Planning and Zoning.	15
Safety	15
Police	15
Fire	15
Rescue Service	15
Sanitation	15
EDUCATION	16
Public Schools	16
Vocational Schools	16
Colleges and Universities	17
HEALTH	18
Hospitals.	18
Nursing Homes	18
Public Health.	18
OTHER LOCAL FACILITIES	19
Communications	19
Library Services	19
Religious Institutions	20
Financial Institutions	20
Hotels and Motels.	20
Clubs and Organizations	20
RECREATION.	23
Local	23
Area	23
AGRICULTURE - NATURAL RESOURCES - CLIMATE . . .	25
Agriculture.	25
Natural Resources	25
Climate	25
HISTORY	26

GENERAL HIGHWAY MAP LYON COUNTY KENTUCKY

PREPARED BY THE
KENTUCKY DEPARTMENT OF HIGHWAYS
DIVISION OF PLANNING
IN COOPERATION WITH THE
U.S. DEPARTMENT OF TRANSPORTATION
FEDERAL HIGHWAY ADMINISTRATION

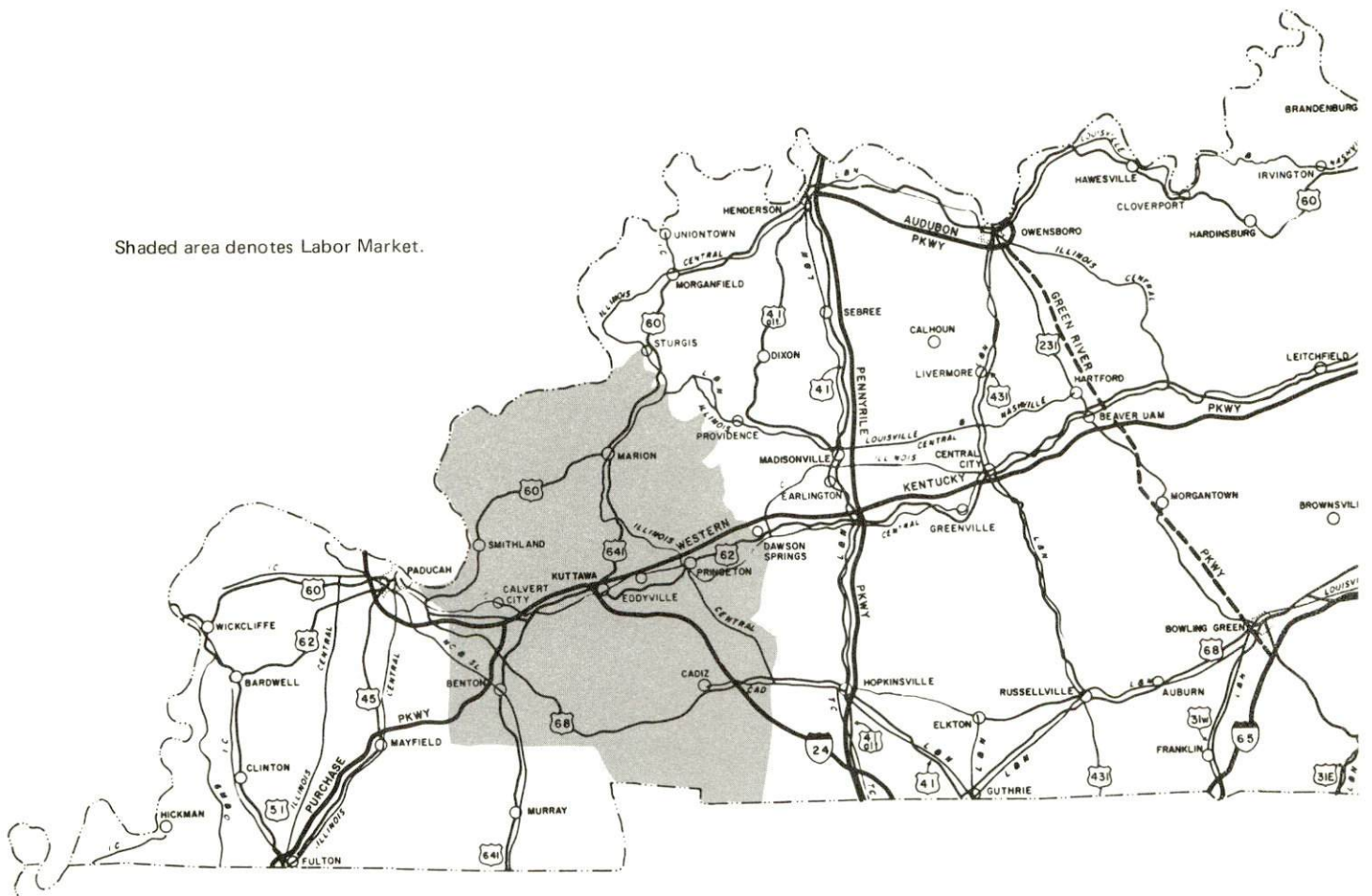
ORIGINAL DATA 1970			
REVISIONS			
DATE	BY	DATE	BY
1-1-71	J.M.G.		
1-1-72	J.M.G.		



EDDYVILLE & KUTTAWA LABOR MARKET AREA



Shaded area denotes Labor Market.



EDDYVILLE-KUTTAWA, KENTUCKY - A RESOURCE PROFILE

Eddyville, largest city in Lyon County, and a 1972 "All Kentucky City," is situated near the center of the county. Eddyville is 180 miles from Louisville, Kentucky; 220 miles from St. Louis, Missouri; and 115 miles from Nashville, Tennessee. In 1970, Eddyville had a population of 1,981.

Kuttawa, second largest city in the county, is located two miles west of Eddyville. In 1970, Kuttawa had a population of 453.

Lyon County, with a land area of 216 square miles, is located at the western edge of the Mississippian Plateau Region of western Kentucky. Lyon County had a 1970 population of 5,562.

The Economic Framework

Total employment in Lyon County in 1971 averaged 1,410 with agriculture providing 300 jobs, trade and services 150, government 420, and manufacturing over 200. A very significant increase in manufacturing employment occurred in 1970 with the location of Shawnee Plastics. The major industrial product is plastic parts for autos and appliances.

Per capita personal income in the county in 1970 was \$1,751, approximately a 132 percent increase since 1960.

In the Eddyville-Kuttawa labor market area, which includes Lyon and the five adjoining counties, 1971 total employment averaged 21,940, with agriculture providing 2,900 jobs, manufacturing 6,040, government 3,540, and trade and services 3,240. Manufacturing employment in the labor market area has increased approximately 80 percent since 1962, with the sharpest gains in the metal products and machinery industries.

Sources for Growth

1. There is a current estimated labor supply of 6,105 men and 5,915 women available for industrial jobs in the labor market area. In addition, 3,110 young men and 2,930 young women will become 18 years of age by 1978 and potentially available for work.

2. The local transportation capability is excellent. The Illinois Central Gulf Railroad provides a variety of services to the county. The county has more than adequate trucking service. U. S. Highways 641 and 68 serve the county. The western Kentucky Parkway is only 2 miles east of Eddyville, and I-24, which is under construction, will pass between Eddyville

and Kuttawa. Barge transportation is available on the Cumberland and Tennessee Rivers. Nearest small craft air service is available at Gilbertsville and Princeton, both 14 miles from Eddyville. Commercial air service is available at Barkley Field, 43 miles away.

3. Electricity is provided in large quantity by Kentucky Utilities Company, Pennyrile RECC, and Henderson-Union RECC. Natural gas service is provided by Western Kentucky Gas Company in Eddyville and by Kuttawa Municipal Gas Company in Kuttawa. Texas Gas Transmission Corporation serves as the source of supply. Two distributors of propane and four distributors of distillate fuel oil deliver in Eddyville and Kuttawa.

4. Industrial sites - Eddyville has one Industrial Park available for industrial use and Kuttawa has one site available.

5. Education - one school system operates within Lyon County. One university and three community colleges are within 50 miles of Eddyville and Kuttawa.

The West Kentucky State Vocational-Technical School is located in Paducah only 35 miles away, and offers training in 15 different courses. Tilghman Area Vocational Education Center also located in Paducah offers training in 20 different courses.

Community Programs for Improvement

In 1972, Eddyville was selected as an "All Kentucky City." The program is sponsored by the Kentucky Chamber of Commerce for excellence in community progress.

Completed projects include: a new city park and playground, establishment of a River Port Authority, formation of a joint planning commission and formation of a historical society.

Planned projects include: a water district, a historical museum, a sewer and fire district, a new 750,000 gpd sewage treatment plant, expansion of the water treatment plant and new lines for the water and sewerage systems.

Recreation, Entertainment and Livability

Kentucky Dam Village State Resort Park, 12 miles distant, includes 1,200 acres and a Village Inn. The facilities include lodge, cottages, and camping sites. Recreational facilities and activities include a pool, 18-hole golf course, horseback riding, playground, tennis court, airstrip, and a lake for boating and fishing.

Kenlake State Resort Park, 40 miles distant, is an 1,800-acre resort park with hotel, cottages and camping facilities. The park facilities and activities include: fishing, boating, pool and lake swimming, horseback riding, golfing, tennis and shuffleboard.

Pennyrile Forest State Resort Park, 25 miles distant, is a 436-acre resort park with a 55-acre lake, lodge, cottages, and camping facilities. The park recreational facilities and activities include: native pine and hardwood forest, lodge pool, beach, bathhouse, boat rentals, fishing, golf, horseback riding, hiking, picnic shelter, playground, and supervised recreation.

Lake Barkley State Resort Park, 22 miles distant, is a 3,000-acre resort park. The facilities include a lodge and cottages, and camping sites. Recreational activities include fishing, boating, swimming and golfing.

Land Between the Lakes National Recreation Area comprises 170,000 acres of wooded ridge formed into a peninsula by Kentucky and Barkley Lakes for recreation, conservation, and education. Recreational activities include fishing, water sports, hunting and camping.

Lake Barkley, a 93,000-acre reservoir, has 1,004 miles of shoreline. Recreational activities include fishing, boating, swimming, camping, hunting and picnicking. Barkley Dam near Grand Rivers is 157 feet high and 10,180 feet long.

Kentucky Lake, with 2,380 miles of shoreline, is the longest of any man-made lake in the world. Activities include fine fishing and water sports, swimming, boating, and water skiing. Huge Kentucky Dam is TVA's largest and controls the waters of the Tennessee River near its junction with the Ohio River at Paducah. The dam is 206 feet high, 8,422 feet long, and cost \$115 million.

THE LABOR MARKET

POPULATION TRENDS ^{1/}

Area	Population			Percent Change	
	1970	1960	1950	1960-70	1950-60
Eddyville	1,981	1,858	1,840	+ 6.6	+ 1.0
Kuttawa	453	635	794	-28.7	-20.0
Labor Market Area	63,831	60,280	61,124	+ 5.9	- 1.4
Lyon County	5,562	5,924	6,853	- 6.1	-13.6
Caldwell County	13,179	13,073	13,199	+ 0.8	- 1.0
Crittenden County	8,493	8,648	10,818	- 1.8	-20.1
Livingston County	7,596	7,029	7,184	+ 8.1	- 2.2
Marshall County	20,381	16,736	13,387	+21.8	+25.0
Trigg County	8,620	8,870	9,683	- 2.8	- 8.4

GENERAL EMPLOYMENT CHARACTERISTICS, 1971 ^{2/}

Major Employment Group	Employment	
	Lyon County	Labor Market Area
TOTAL	1,410	21,940
Agricultural	300	2,900
Nonagricultural	1,110	19,040
Manufacturing	40*	6,042
Government	420	3,540
Trade and Services	158	3,240

*Does not include employment at Shawnee Plastics.

MANUFACTURING EMPLOYMENT TRENDS BY INDUSTRY MARCH 1972 AND 1962 ^{3/}

Industry	Lyon County			Labor Market Area		
	1972	1962	%Change	1972	1962	%Change
TOTAL	187	27	+ 592.6	5,652	3,146	+ 79.7
Food & Kindred Products	0	0	0	59	24	+145.8
Apparel, Textiles, Leather	0	0	0	742	495	+ 49.9
Lumber, Furniture	0	13	- 100.0	701	182	+285.2
Printing & Publishing, Paper	0	3	- 100.0	186	159	+ 17.0
Chemicals, Petroleum & Coal, Rubber	187	5	+3640.0	1,768	1,548	+ 14.2
Stone, Clay & Glass	0	6	- 100.0	34	160	- 78.8
Primary Metals	0	0	0	690	573	+ 20.4
Machinery, Metal Products, Equipment	0	0	0	1,472	0	--
Other	0	0	0	0	5	-100.0

EDDYVILLE-KUTTAWA MANUFACTURING FIRMS,
THEIR PRODUCTS AND EMPLOYMENT 4/

THEIR PRODUCTS AND EMPLOYMENT				
Firm	Product	Employment		
		Total	Male	Female
<u>Eddyville</u>				
Buchanon Mfg. & Interiors	Furniture, draperies, bedspreads	12		
Dunbar & Sullivan Dredging Company	Barge repair	18	17	1
<u>Kuttawa</u>				
Ashland Oil, Inc.	Asphalt	7	6	1
Emulsified Asphalt Co.	Emulsified asphalt	8		
Shawnee Plastics	Plastic parts for autos & appliances	200	70	130
Guess Trucking & Construction Co., Inc.	Ready mix concrete	6		

WAGES

Wage information will be furnished upon request by the Kentucky
Department of Commerce, Research and Planning Division.

LABOR ORGANIZATIONS

<u>Union</u>	<u>Representing workers at:</u>
International Brotherhood of Teamsters, Chauffeurs, Warehousemen, and helpers of America	Ashland Oil, Inc.
International Hod Carriers, Building and Common Laborers' Union of America	Dunbar & Sullivan Dredging Company

CURRENT AND FUTURE LABOR SUPPLY -
EDDYVILLE-KUTTAWA LABOR MARKET AREA

<u>Area</u>	<u>Current Labor Supply, 1972 ^{5/}</u>			<u>Future Labor Supply by 1978 ^{6/}</u> <u>(Becoming 18 Years of Age)</u>		
	<u>Total</u>	<u>Male</u>	<u>Female</u>	<u>Total</u>	<u>Male</u>	<u>Female</u>
Labor Market						
Area	12,016	6,103	5,913	6,039	3,111	2,928
Lyon Co.	1,588	1,304	284	416	211	205
Caldwell Co.	2,561	1,220	1,341	1,181	594	587
Crittenden Co.	1,415	700	715	791	430	361
Livingston Co.	1,516	716	800	711	353	358
Marshall Co.	3,584	1,530	2,054	2,088	1,087	1,001
Trigg Co.	1,352	633	719	852	436	416

PER CAPITA PERSONAL INCOME ^{7/}

<u>Area</u>	<u>1970</u>	<u>1960</u>	<u>% Change</u>
Lyon County	\$1,751*	\$ 755	+131.9
Labor Market Area			
Range	\$1,751 to 3,924*	\$755 to 1,585	N.A.
Kentucky	3,099	1,581	+ 96.0
U.S.	3,933	2,216	+ 77.5

*Unadjusted for commuting.

TRANSPORTATION

Rail

Line serving Eddyville and Kuttawa - Illinois Central Gulf Railroad

Services - Freight, siding, switching; REA Express

For details on routing, schedules, rates, and services, contact:

Director of Industrial Development
Illinois Central Gulf Railroad Company
135 East 11th Place
Chicago, Illinois 60605

Truck Service

<u>Company</u>	<u>Home Office</u>
Harper Truck Service, Inc.	Paducah, Kentucky
A. Ligon Truck Line, Inc. (United Trucking)	Lebanon, Kentucky
McLean Trucking Company	Winston-Salem, North Carolina
Skaggs Transfer, Inc.	Louisville, Kentucky
United Parcel Service	St. Charles, Illinois

HIGHWAY MILES AND TRUCK TRANSIT TIME IN DAYS FROM EDDYVILLE-KUTTAWA, KENTUCKY, TO SELECTED MARKET CENTERS

<u>City</u>	<u>Highway</u> <u>Miles</u>	<u>Delivery</u> <u>Time ^{8/}</u> <u>TL</u>	<u>City</u>	<u>Highway</u> <u>Miles</u>	<u>Delivery</u> <u>Time</u> <u>TL</u>
Atlanta, Ga.	364	2	Los Angeles, Calif.	2,024	3
Birmingham, Ala.	302	2	Louisville, Ky.	180	1
Chicago, Ill.	375	1	Nashville, Tenn.	115	1
Cincinnati, Ohio	280	1	New Orleans, La.	645	2
Cleveland, Ohio	532	2	New York, N. Y.	956	2
Detroit, Mich.	546	1	Pittsburgh, Pa.	580	2
Knoxville, Tenn.	300	2	St. Louis, Mo.	220	1

Air

	<u>Nearest Local</u>	<u>Nearest Local</u>
	Kentucky Dam State Park Airport	Princeton-Caldwell County Airport
Location	Gilbertsville, 14 miles from Eddyville	Princeton, 14 miles from Eddyville
Runways:	1 paved, 1 turf	1 paved
Length:	4,000 ft., 2,900 ft.	3,000 ft.
Traffic		
Control:	Wind tee, Unicom	Wind tee
Lighting:	Runway lights from sundown to sunrise	
Services:	80 and 100 octane, jet fuel, tiedown, charter service and car rental, flight instruction, A & E repairs	

Nearest Commercial

	Barkley Field
Location:	Paducah, 43 miles from Eddyville
Runways:	2 paved
Length:	4,000 ft., 6,500 ft.
Traffic	
Control:	Wind tee, radio
Lighting:	Beacon, boundary, obstruction, runway lights and runway end identification lights
Services:	80 and 100 octane, jet fuel, Delta and Ozark Airlines, taxi, limousine, U-Drive-It, storage, major A & E repairs

Water

A private river terminal is located in the jurisdiction of the Lyon County River Port Authority and its environs. The River Port Authority is located on Lake Barkley, south of Eddyville and east of Kuttawa. Lake Barkley is part of the inland waterway system which maintains a nine-foot navigation channel. The Ohio, Cumberland, and Tennessee Rivers are all part of the inland waterway system and are interconnected at or near this point.

Bus

Kentucky Bus Lines serves both Eddyville and Kuttawa.

Rental Services - Automobile rentals in the area

POWER AND FUEL

Electricity

Company serving Eddyville and Kuttawa - Kentucky Utilities Company

Source of power - Kentucky Utilities Company

Total generating capacity - 1,215,000 KW

Industrial rates furnished by - Kentucky Utilities Company, 120 South Limestone, Lexington, Kentucky 40507

Company serving Lyon County - (1) Pennyrile RECC; (2) Henderson-Union RECC

Source of power - (1) Tennessee Valley Authority; (2) Big Rivers RECC

Total generating capacity - (1) 19,400,000 KW (2) 400,000 KW

Industrial rates furnished by - (1) Pennyrile RECC, Hopkinsville, Kentucky 42240, (2) Henderson-Union RECC, Henderson, Kentucky 42420

Natural Gas

Company serving Eddyville - Western Kentucky Gas Company

Source of supply - Texas Gas Transmission Corporation

Size of transmission mains - 24-inch (supplier); 3-inch (distributor)

Distribution mains - 2 and 3 inches

Btu content - 1,000 per cubic foot; Specific gravity - .60

Rates: Industrial rates will be furnished by the Western Kentucky Gas Company, 608 Frederica Street, Owensboro, Kentucky 42301

Company serving Kuttawa - Kuttawa Municipal Gas Company

Source of supply - Texas Gas Transmission Corporation

Size of transmission mains - 26-inch (2) (supplier); 6, 4, and 2 inches (distributor)

Distribution mains - 4, 2 and 1 inches

Distribution pressure - 40 psi

Btu content - 1,015 per cubic foot; Specific gravity - .60

Rates: Industrial rates will be furnished by the Kuttawa Municipal Gas Company; Kuttawa, Kentucky 42055

Other Fuels

Propane and butane - Fortner Gas Company, Princeton

Osting - Gulf Distributor, Princeton

Fuel Oils -

Distillate fuel oil - Standard Oil Company, Princeton; Osting-Gulf Oil Company, Princeton; Sunoco Oil Company, Princeton; Ashland Oil Inc., Fredonia

Residual fuel oil - arrangements must be made with the refinery

Low sulphur content coal - Available in eastern Kentucky

WATER AND SEWERAGE

Water

Company serving Eddyville - Eddyville Water Department

Source - Lake Barkley

Treatment plant capacity - 540,000 gpd

Average daily consumption - 165,000 gallons

Peak daily consumption - 298,400 gallons

Type treatment - Sedimentation, coagulation, filtration, and chlorination

Storage capacity - 325,000 gallons

Size mains - 8, 6, 4 inches

Average pressure - 55 psi

Average temperature - 50 degrees F.

MONTHLY WATER RATES FOR WHOLESALE AND INDUSTRIAL CONSUMERS

0 to	2,000 gals.	\$3.50 (minimum)
2,000 to	5,000 gals.	.80 per M gals.
5,000 to	10,000 gals.	.70 per M gals.
10,000 to	30,000 gals.	.60 per M gals.
30,000 to	50,000 gals.	.50 per M gals.
50,000 to	100,000 gals.	.40 per M gals.
Over	100,000 gals.	.30 per M gals.

An additional charge of \$1.50 per month will be made to customers outside the city limits.

Company serving Kuttawa - Kuttawa Water and Sewer Department

Source - Lake Barkley

Treatment plant capacity - 800,000 gpd

Average daily consumption - 70,000 gallons

Peak daily consumption - 235,000 gallons

Type treatment - Sedimentation, filtration and chlorination

Storage capacity - 600,000 gallons

Size mains - 10, 8, 6, and 4 inches

Average pressure - 85 psi

Average temperature - 52 degrees F.

MONTHLY WATER RATES FOR WHOLESALE
AND INDUSTRIAL CONSUMERS

First	1,000 gallons	\$4.00 (minimum)
Next	4,000 gallons	1.10 per M gallons
Next	5,000 gallons	1.00 per M gallons
Next	5,000 gallons	.90 per M gallons
Next	5,000 gallons	.80 per M gallons
Next	5,000 gallons	.70 per M gallons
Next	25,000 gallons	.60 per M gallons
Next	50,000 gallons	.50 per M gallons
Next	900,000 gallons	.40 per M gallons
Over	1,000,000 gallons	.40 per M gallons

A 40¢ service charge is added to the foregoing schedule for connections outside the city limits of Kuttawa.

Surface water sources - Cumberland River and Barkley River
Average discharge - 25,510 cfs at Cumberland River near Grand Rivers, Kentucky (25 year record, 1940-65) prior to the opening of Barkley-Kentucky Canal
Expected ground water yield - 5 gpm or less in south central; 500-200 gpm from areas adjacent to Cumberland River below dam and east central; 5-50 gpm in remaining area

Sewerage

Company serving Eddyville - Eddyville Sewer Department
Design capacity - 95,000 gpd
Average daily flow - 80,000 gallons; Treatment - Primary and secondary
Type treatment - Trickling filter, clarifier, digester, drying beds
Treated effluent discharged into - Lake Barkley
Size of sanitary mains - 12, 10, and 8 inches; Size of storm mains - 18, 24 and 36 inches
Rates - 50 percent of monthly water bill

Company serving Kuttawa - Kuttawa Water and Sewer Department
Design capacity - 500,000 gpd
Average daily flow - 50,000 gallons; Treatment - Primary and secondary
Type treatment - Aeration, clarifier, digester, and drying beds
Treated effluent discharged into - Lake Barkley
Size of sanitary mains - 6, 8, 10 and 12 inches; Size of storm mains - 12 to 48 inches
Rates - 50 percent of monthly water bill

LOCAL GOVERNMENT

City

Eddyville

Structure - Mayor - 4-year term; 6 councilmen - 2-year terms

Budget 1972-73 - General Fund \$22,000; Water and Sewer Fund \$54,000

Fees and licenses - Business licenses vary from \$15 to \$30 per year;
unloading license - \$25 per year; auto sticker - \$5 per year

Kuttawa

Structure - Mayor - 4-year term; 6 councilmen - 2-year terms

Budget 1972 - General Fund \$9,514 (1971); Water and Sewer Fund
\$40,144; City Gas Fund \$109,029

Fees and licenses - Unloading licenses vary from \$5 to \$15 per year;
auto sticker - \$3 per year

County

Structure - County Judge - 4-year term; 3 magistrates - 4-year terms

Budget 1972-73 - General Fund \$95,171; Road Fund \$45,300

Assessed Value of Property, 1972

<u>Classes of Property</u>	<u>Eddyville</u>	<u>Kuttawa</u>	<u>Lyon County</u>
Real Estate & Tangibles		\$4,473,202	
Real Estate	\$4,122,185		\$36,430,312
Tangibles	1,394,881		4,826,551
Public Service	675,935	162,599	9,385,138

Local General Property Tax Rates Per \$100 of Assessed Valuation, 1972 ^{9/}

<u>Taxing Unit**</u>	<u>Eddyville</u>	<u>Kuttawa</u>	<u>Lyon County</u>
State	\$.015	\$.015	\$.015
County	.143	.143	.143
School	.360	.360	.360
City	.210	.210	
Total	\$.728	\$.728	\$.518

*Property assessed at 100 percent of fair value.

**Manufacturing machinery, raw materials inventories and goods in process
inventories are not subject to local tax. State rate is only \$.15 per \$100.



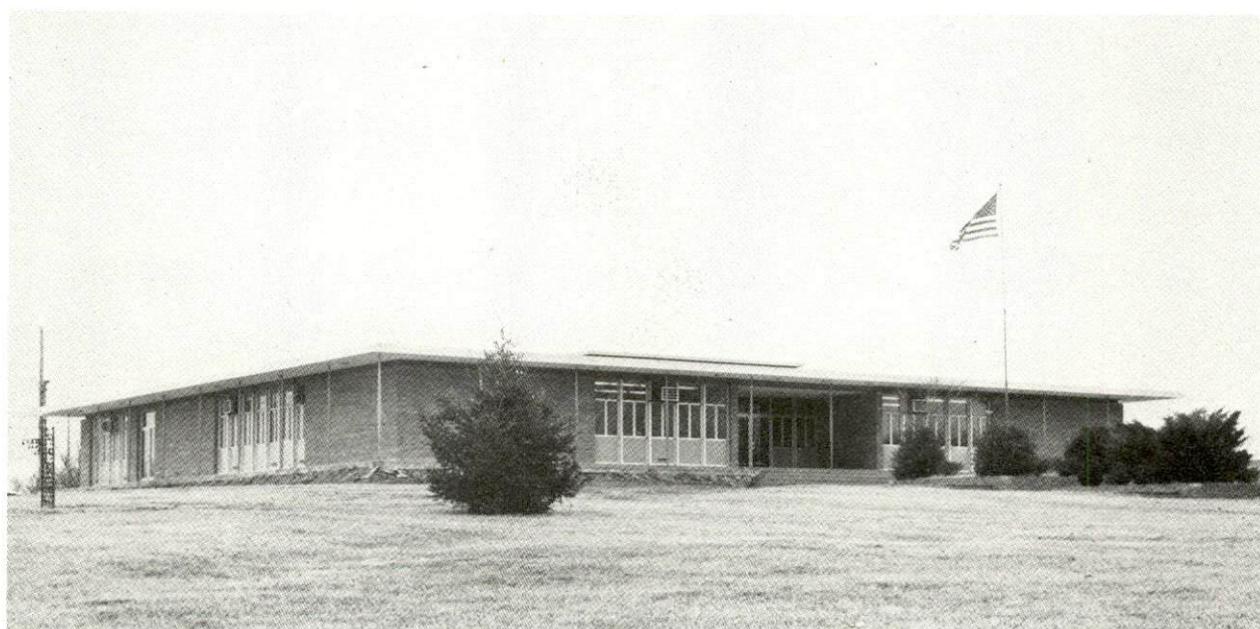
EDDYVILLE CITY HALL



KUTTAWA CITY HALL



LYON COUNTY LIBRARY



LYON COUNTY COURTHOUSE

Planning and Zoning

Joint agency - Eddyville-Kuttawa-Lyon County Joint Planning Commission
Zoning enforced - City wide
Subdivision regulations enforced - City and 5 miles beyond city limits
Local codes enforced - Building
Mandatory state codes enforced - Plumbing, National Fire Protection
Association Code, National Building Code (for major buildings and
residential construction containing more than 12 bedrooms per building)
Other programs - Public housing

Safety

<u>Police</u>	<u>Eddyville</u>	<u>Kuttawa</u>	<u>Lyon County</u>
Total staff	1	0	5
Radio-patrol cars	1	0	3

Fire

American Insurance			
Association Fire Rating	8 and 10	8	
Volunteers	18	22	
Equipment:			
750 gpm pumpers	1	1 (on order)	1
500 gpm pumper		1	

Rescue Service

Lyon County Rescue Squad:
Number of volunteers - 18
Equipment - Boat, motor, dragging equipment, oxygen equipment
Personnel training - First aid

Sanitation

	<u>Eddyville</u>	<u>Kuttawa</u>	<u>Lyon County</u>
Type service	Private	Private	
Fee charged:			
residential	\$2.50/mo.	\$3.00/mo.	Car load 50¢ Truck load \$1
business	Varies	Varies	Truck load \$1
Collection			
frequency:			
residential	Weekly	Weekly	Landfill is avail-
business	As required	Weekly	able for use by
Trash pickup	Weekly	Weekly	county residents
Disposal method	County landfill	County landfill	County landfill

EDUCATION

Public Schools

	<u>Lyon County</u>
Total Enrollment	979
Elementary	663
High School	316
Student- Teacher Ratio	22-1
Elementary	25-1
High School	19-1
Percent High School Graduates to College	53.1
Current Expenditures Per Pupil (1971-72)	\$574.83
Bonded Indebtedness, June 30, 1972	\$351,000

Vocational Schools

	<u>Nearest State School</u>
Location	West Kentucky State Vocational-Technical School Paducah
Miles Distant	35 miles
Curriculum	Accounting Jr. Management Clerical Secretarial Learning Lab. Electronics (Communications) Auto Body Repair Auto Mechanics Barbering Carpentry Commercial Foods Cosmetology Drafting Electricity Masonry Tailoring

Vocational Schools (continued)Nearest Area Education Center

Location	Tilghman Area Vocational Education Center Paducah
Miles Distant	35 miles
Curriculum	Marketing & Distributive Education Health Careers Nurse Aide Practical Nursing Surgical Technician Ward Clerk Electronics (Communications) Highway Technology Air Conditioning & Refrigeration Appliance Repair Auto Body Repair Auto Mechanics Carpentry Cosmetology Drafting Electricity Machine Shop Welding Service Station Attendant Small Engine Repair

Colleges and Universities

<u>Name</u>	<u>Area - Within 50 miles</u>		<u>Highest Degree Conferred</u>
	<u>Location</u>	<u>Enrollment</u>	
Hopkinsville Community College	Hopkinsville	752	Associate
Madisonville Community College	Madisonville	356	Associate
Murray State University	Murray	7,257	Masters
Paducah Community College	Paducah	1,161	Associate

HEALTH

Hospitals

<u>General Hospital</u>	<u>Location</u>	<u>Beds</u>
Caldwell County Memorial Hospital	Princeton (12 miles away)	85

General hospital facilities and services - 2 operating rooms, diagnostic X-ray, clinical laboratory including basal metabolism and electro-cardiograph, emergency and outpatient services, complete obstetrical facilities, pharmacy, dietary, and extended care facilities

Medical staff - 6 doctors, 12 registered nurses, 21 graduate licensed practical nurses, radiologist, pathologist and cardiologist

Nursing Homes

	<u>Number</u>	<u>Beds</u>
Personal care homes	1	64

Public Health

Facility - Lyon County Health Department

Staff - Health services aide, registered nurse, clerk, administrative assistant (part-time), sanitarian (part-time), nutritionist (part-time), and clinician (when needed)

Budget 1972-73 - \$24,404

OTHER LOCAL FACILITIES

Communications

	<u>Eddyville</u>	<u>Kuttawa</u>
Telephone -	South Central Bell	South Central Bell
	Telephone Company	Telephone Company
Services -	Standard	Standard
Postal - U. S. Post Office		
Class -	Second	Second
Mail received -	Twice daily	Twice daily
Mail dispatched -	Twice daily	Twice daily
Newspapers -	Herald Ledger	
Weekly and		
Circulation -	2,163	
Other papers		
received from -	Louisville and Paducah Kentucky	Eddyville, Louisville and Paducah, Kentucky
Radio -		
Stations received		
from -	Princeton, Benton, Paducah, Cadiz and Louisville, Kentucky	Princeton, Benton, Paducah, Cadiz and Louisville, Kentucky
Television - Cable Service		
Reception from -	Paducah, Kentucky; Cape Girardeau, Missouri; Harrisburg, Illinois	Paducah, Kentucky; Cape Girardeau, Missouri; Harrisburg, Illinois
Kentucky Educational		
Television -	Murray Transmitter - Channel 21 Madisonville Transmitter Channel 135	Murray Transmitter Channel 21 Madisonville Transmitter Channel 135

Library Services

Public library - Lyon County Library
Size collection - 18,500 volumes
Circulation, 1971-72 - 72,224 volumes
Services - Magazines, film strips, film strip projectors, microfilms,
records, record player, art, color TV, piano, story hour, copy
machine, book club, meeting room, bookmobile, and displays

Religious Institutions

	<u>Eddyville</u>	<u>Kuttawa</u>
Number of churches -	6	3
Denominations -	Baptist Church of Christ Methodist	Baptist Church of Christ Methodist
Nearest synagogues -	Paducah	Paducah
Congregations -	Temple Israel (Reform)	Temple Israel (Reform)

Financial Institutions

<u>Bank</u>	<u>Statement as of June 30, 1972</u>	
	<u>Assets</u>	<u>Deposits</u>
Citizens State Bank of Lyon County	\$7,700,566.	\$6,811,877.

Hotels and Motels

Total number - 4
Units - 62

Clubs and Organizations

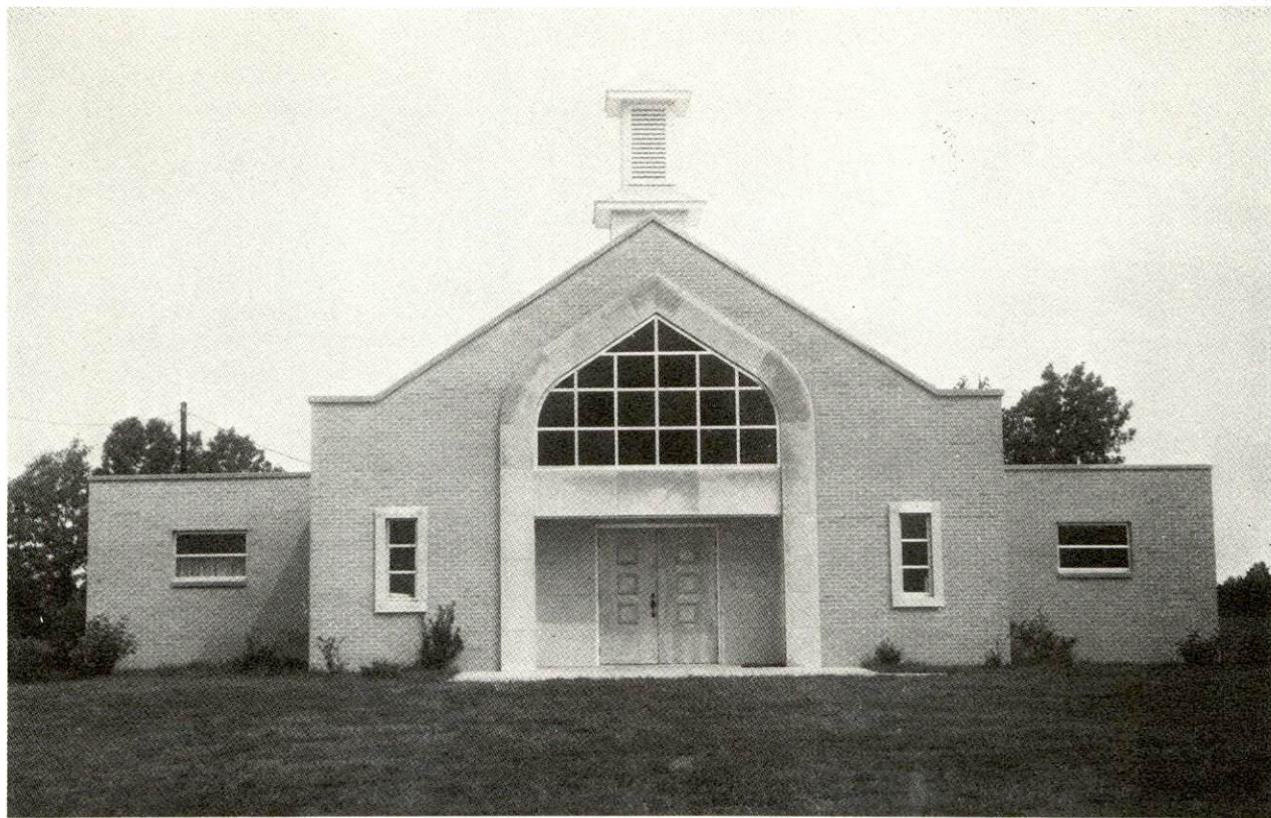
Business and Civic - Rotary, Lions, Lyon County Chamber of Commerce,
Civil Defense, Professional and Business Club, Inc., Jaycees

Fraternal - Masonic Lodge

Women's - Women's Civic Club, Homemakers

Youth - Boy Scouts, Girl Scouts, FFA, FHA, 4-H Club

Other - Farm Bureau, Woodmen of the World, Lake Barkley Riding Club



EDDYVILLE BAPTIST CHURCH



KUTTAWA UNITED METHODIST CHURCH



EDDYVILLE POST OFFICE



KUTTAWA POST OFFICE

RECREATION

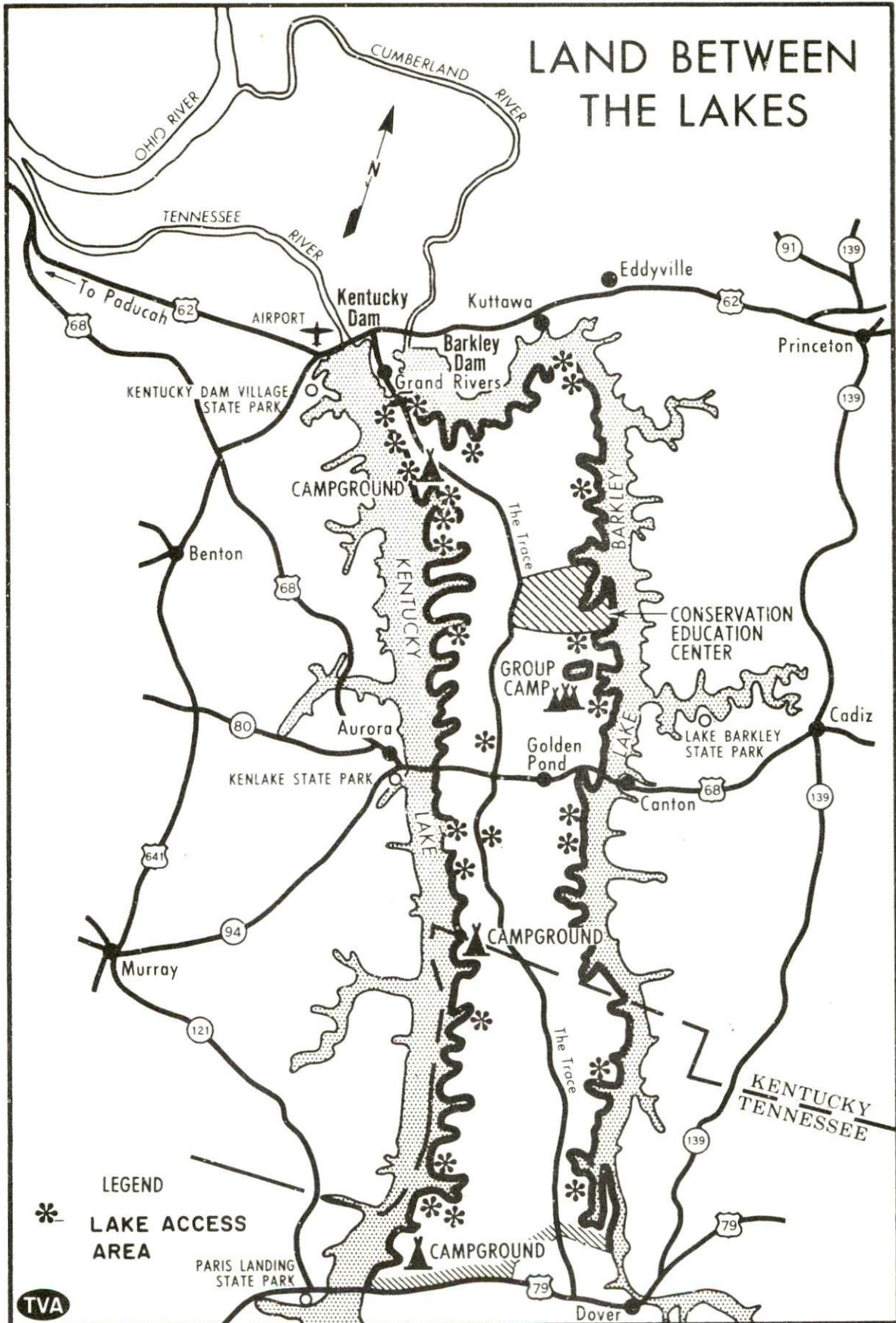
Local

	<u>Eddyville</u>	<u>Kuttawa</u>
Public Recreation Facilities		
Park -	1	
Playgrounds -	1	1
Swimming pool -	1	
Tennis courts -	2	
Baseball diamonds -	1	1
Other -	3 boat docks, fishing, boating	
Private Recreation Facilities		
Bowling lanes -	1 facility (8 lanes)	
Skating rink -		1
Tourist Attractions		
Founders Day		
Annual Sailboat Regatta		
Cultural Events		
Summer theater at Kenlake State Resort Park		

Area (Within 50 miles)

Kentucky Dam Village State Resort Park
 Kenlake State Resort Park
 Pennyrile Forest State Resort Park
 Lake Barkley State Resort Park
 Land Between the Lakes National Recreation Area
 Lake Barkley
 Kentucky Lake

LAND BETWEEN THE LAKES



AGRICULTURE - NATURAL RESOURCES - CLIMATE

Agriculture ^{10/}

	<u>Lyon County</u>	<u>Labor Market Area</u>
Total land area (acres)	138,240	1,253,824
Percent of area in farm land	44.6	60.3
Number of farms	390	4,338
Average size of farms (acres)	158.0	174.4
1969 value of all farm products	\$2,568,132	\$25,822,921
Value per farm	6,584	5,953
Total crop sales	768,634	7,261,269
Total livestock & livestock products	1,768,546	18,272,329
1970 agricultural production included:		
Burley tobacco (lbs.)	288,000	2,617,000
Corn (bu.)	238,000	2,498,000
Cattle and calves (number)	10,600	136,700
Hogs and pigs (number)	10,300	1,196,000
Milk production, 1969 (lbs.)	2,610,000	30,855,000

Natural Resources

Principal mineral resources	Sand and gravel
Other mineral resources	Limestone
Acres of commercial forest land	80,600
Most abundant tree species	Red oak, white oak, hickory, hard and soft maple

Climate ^{11/}

	<u>Lyon County</u>
Temperature	
Annual mean (30-year record)	60.2 degrees
Average annual 1971	59.3 degrees
Record highest, July, 1966 (6-year record)	103.0 degrees
Record lowest, January, 1966 (6-year record)	- 6.0 degrees
Seasonal heating degree days (30-year record)	3,578
Precipitation	
Mean annual total (30-year record)	45.14 inches
Mean annual snow and sleet (30-year record)	11.70 inches
Total precipitation 1971	40.65 inches
Mean number days precipitation (.01 inch or more) (30-year record)	118
Average number days thunderstorms (30-year record)	55
Prevailing winds (32-year record)	Northwest

HISTORY

Lyon County, the one-hundred and second county formed in the state, contains 216 square miles and dates from 1854. Its surface ranges from level lands to hilly areas and its soil is generally fertile. Three types of tobacco -- burley, dark-fired, and dark air-cured -- grow in the county. The west side of the county follows the Cumberland River from a point a few miles above Barkley Dam, downstream to Crittenden County. Lyon County is situated in the western Kentucky recreational area, and contains a portion of "The Land Between the Lakes National Recreational Area."

Lyon County contains large iron ore deposits, and in the late 1850's the Elizabethtown and Paducah Railroad opened them to domestic and international commerce. Because of the long, tedious routes to manufacturing centers, there never was a widespread interest in their development. Other deposits of iron ore, chiefly in Minnesota, were opened in the 1880's which proved fatal to Kentucky's chances to become an iron ore producing center.

Eddyville, the county seat, was settled in 1799 by Matthew Lyon and was incorporated in 1810. It was named for the eddies in the Cumberland River above and below its site. It became the county seat of Caldwell County when that county was formed in 1809. Later the seat of government was moved to Centerville, once again back to Eddyville, then finally to Princeton. When Lyon County was established, Eddyville became its permanent county seat.

The Eighty-Third Congress in 1954 authorized the construction of the Barkley Dam. It created a lake some 118 miles long which caused the relocation of two towns in Lyon County, including her county seat. It also flooded some 62,000 acres of her land. The dam was built to help harness the meandering and often turbulent Cumberland River, improve navigation, produce electric power and open a vast new field of recreation and tourist business in the state. Barkley Dam and the one at Jamestown several miles upstream are the first of several slated to be built in the Cumberland valley. Barkley Dam is the largest on the Cumberland River; however, it is smaller than its companion Kentucky Dam across the Tennessee River. The creation of Lake Barkley, however, necessitated the complete relocation of Eddyville, the county seat, and only the State Penitentiary was not moved. Its elevated site was not touched by the backwater of Barkley Dam, and the institution now occupies a man-made peninsula.

It was at Eddyville that Colonel Matthew Lyon built several hulls of warships for the United States government in 1811-1812. Its companion town, Kuttawa, only two miles distant while they were located on the river, and now even closer, was the home of William Kelly who discovered the air-boiling process, later known as the Bessemer process of making steel.

Kelly's long struggle to obtain a patent for his discovery, after Bessemer had first obtained one, was tense and bitter. It was unfortunate that he lost it through negligence within a few years and now only Bessemer's name is identified with the process.

The 1860 population of Lyon County was 5,807. The county had a steady increase in population until it reached a high of 9,423 in 1910. During the next two decades, the population decreased. In 1940, the county reached its second high of 9,067. Since 1940 there has been a steady decrease in population to its 1970 level of 5,562.

Although Lyon County's soils are fertile, agricultural production has never been as extensive as it could have been. Agriculture accounted for 300 of the county's 1,410 employed in 1971, with corn, burley, dark-fired, air-cured tobacco, cattle and hogs the principal products. Manufacturing employment increased from 27 in 1962 to 187 in 1972. The largest firm in the county is Shawnee Plastics.

SOURCES OF INFORMATION

- 1/ U. S. Department of Commerce, Bureau of the Census, Census of Population, 1950, 1960, 1970.
- 2/ Kentucky Department of Economic Security, Division of Research and Statistics.
- 3/ Kentucky Department of Economic Security, Number of Workers in Manufacturing Industries Covered by Kentucky Unemployment Insurance Law Classified by Industry and County, March 1972-March 1962.
- 4/ Kentucky Department of Commerce, Research & Planning Division.
- 5/ Kentucky Department of Economic Security, Kentucky Labor Supply Estimates by County, January 1972.
- 6/ Kentucky Department of Commerce, Future Labor Supply by 1978.
- 7/ University of Kentucky Office of Development Services and Business Research, Per Capita Income in Kentucky; U. S. Department of Commerce, Bureau of Economic Analysis, Survey of Current Business, August 1972.
- 8/ Harper Truck Service, Inc., P. O. Box 338, Paducah, Kentucky 42001.
- 9/ Kentucky Department of Revenue, Kentucky Property Tax Rates, 1972.
- 10/ U. S. Department of Commerce, Bureau of the Census, Census of Agriculture, 1969. U. S. Department of Agriculture and Kentucky Department of Agriculture, Kentucky Agricultural Statistics, 1971.
- 11/ U. S. Department of Commerce, Environmental Science Services Administration, Climatological Data, 1971.

All other information was obtained from governmental offices, local businesses and organizations.