

1969

Industrial Resources: Marion County - Lebanon

Kentucky Library Research Collection
Western Kentucky University, spcol@wku.edu

Follow this and additional works at: https://digitalcommons.wku.edu/marion_cty

 Part of the [Business Administration, Management, and Operations Commons](#), [Growth and Development Commons](#), and the [Infrastructure Commons](#)

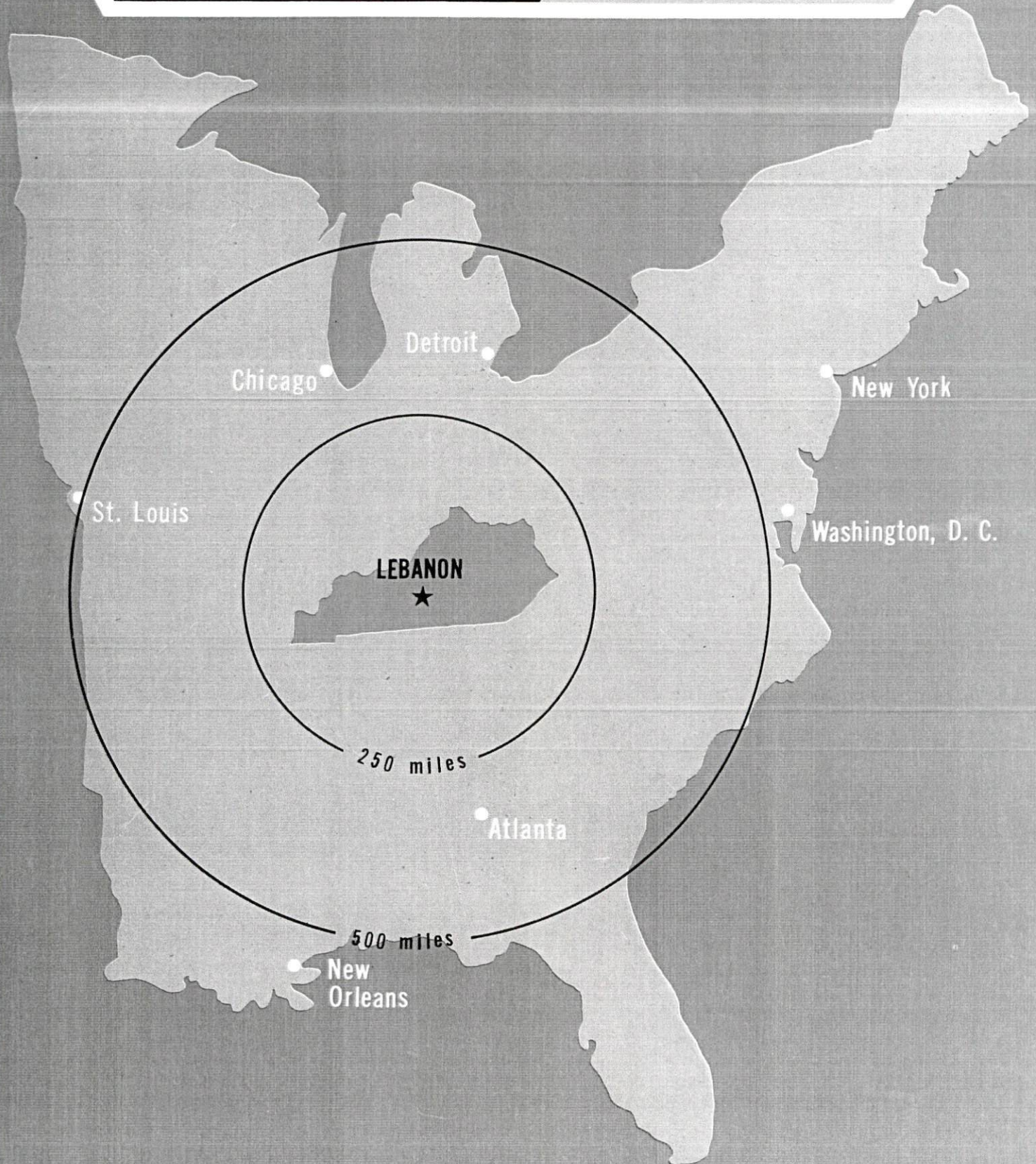
Recommended Citation

Kentucky Library Research Collection, "Industrial Resources: Marion County - Lebanon" (1969). *Marion County*. Paper 14.
https://digitalcommons.wku.edu/marion_cty/14

This Report is brought to you for free and open access by TopSCHOLAR®. It has been accepted for inclusion in Marion County by an authorized administrator of TopSCHOLAR®. For more information, please contact topscholar@wku.edu.

INDUSTRIAL RESOURCES

LEBANON KENTUCKY



LEBANON INDUSTRIAL SITES

1969

LEBANON INDUSTRIAL SITES

For more detailed information concerning the following sites, contact Gene Spragens, Jr., Industrial Development Chairman, Lebanon Chamber of Commerce, Lebanon, Kentucky, or the Kentucky Department of Commerce, Frankfort, Kentucky.

- SITE #1: ACREAGE AND TOPOGRAPHY: 47.80 acres, rolling
LOCATION: U. S. 68 - eastern city limits
HIGHWAY ACCESS: U. S. 68 on north; Sulphur Spring Road on east
RAILROAD: Louisville & Nashville Railroad - rail spur to site
WATER: Lebanon Water Works Company
GAS: Western Kentucky Gas Company
ELECTRICITY: Kentucky Utilities Company
SEWERAGE: Lebanon Municipal Sewerage System
OPTIONED BY: Lebanon Industrial Committee
- SITE #2: ACREAGE AND TOPOGRAPHY: 80 acres, slightly rolling
LOCATION: One-half mile west of Lebanon on Kentucky Route 49
HIGHWAY ACCESS: Kentucky Route 49
RAILROAD: Louisville & Nashville Railroad borders site on south.
WATER: Lebanon Water Works Company
GAS: Western Kentucky Gas Company
ELECTRICITY: Available
SEWERAGE: Lebanon Municipal Sewerage System
OWNERSHIP: Private
- SITE #3: ACREAGE AND TOPOGRAPHY: 8.7 acres, slightly rolling
LOCATION: Southwest of Lebanon on U. S. 68
HIGHWAY ACCESS: U. S. 68 borders the site.
RAILROAD: Rail is not available on the site. The Louisville & Nashville track is 1.5 miles distant.
WATER: Lebanon Water Works Company
GAS: Western Kentucky Gas Company
ELECTRICITY: Kentucky Utilities Company
SEWERAGE: Lebanon Municipal Sewerage System
OWNED BY: City of Lebanon
- SITE #4: ACREAGE AND TOPOGRAPHY: 12 acres, level land
LOCATION: Northeast section of Lebanon
HIGHWAY ACCESS: 700 feet of city street to U. S. 68
RAILROAD: The Louisville & Nashville track runs 500 feet south of the site.
WATER: Lebanon Water Works Company
GAS: Western Kentucky Gas Company
ELECTRICITY: Kentucky Utilities Company
SEWERAGE: Lebanon Municipal Sewerage System
OWNERSHIP: Private

Available Industrial Building

LOCATION: Woodlawn Avenue, Lebanon, Kentucky
OWNER: City of Lebanon YEAR CONSTRUCTED: 1959
NO. OF FLOORS: 1 (8,613 square feet)
ACREAGE AVAILABLE: Approximately 5.25
TYPE CONSTRUCTION: Brick, block and concrete
TYPE ROOF: Built up TYPE FLOOR: Brick-tile, concrete
HEATING: Gas fired steam heat
TRUCK LOADING DOCKS: Yes
ROADWAY ACCESS: U. S. 68 one block north, 3 blocks from Ky. Route 55
WATER: Lebanon Water Works Company SEWERAGE: 8-inch main
GAS: Western Kentucky Gas Company, 4-inch line
ELECTRICITY: Kentucky Utilities Company

LEGEND:

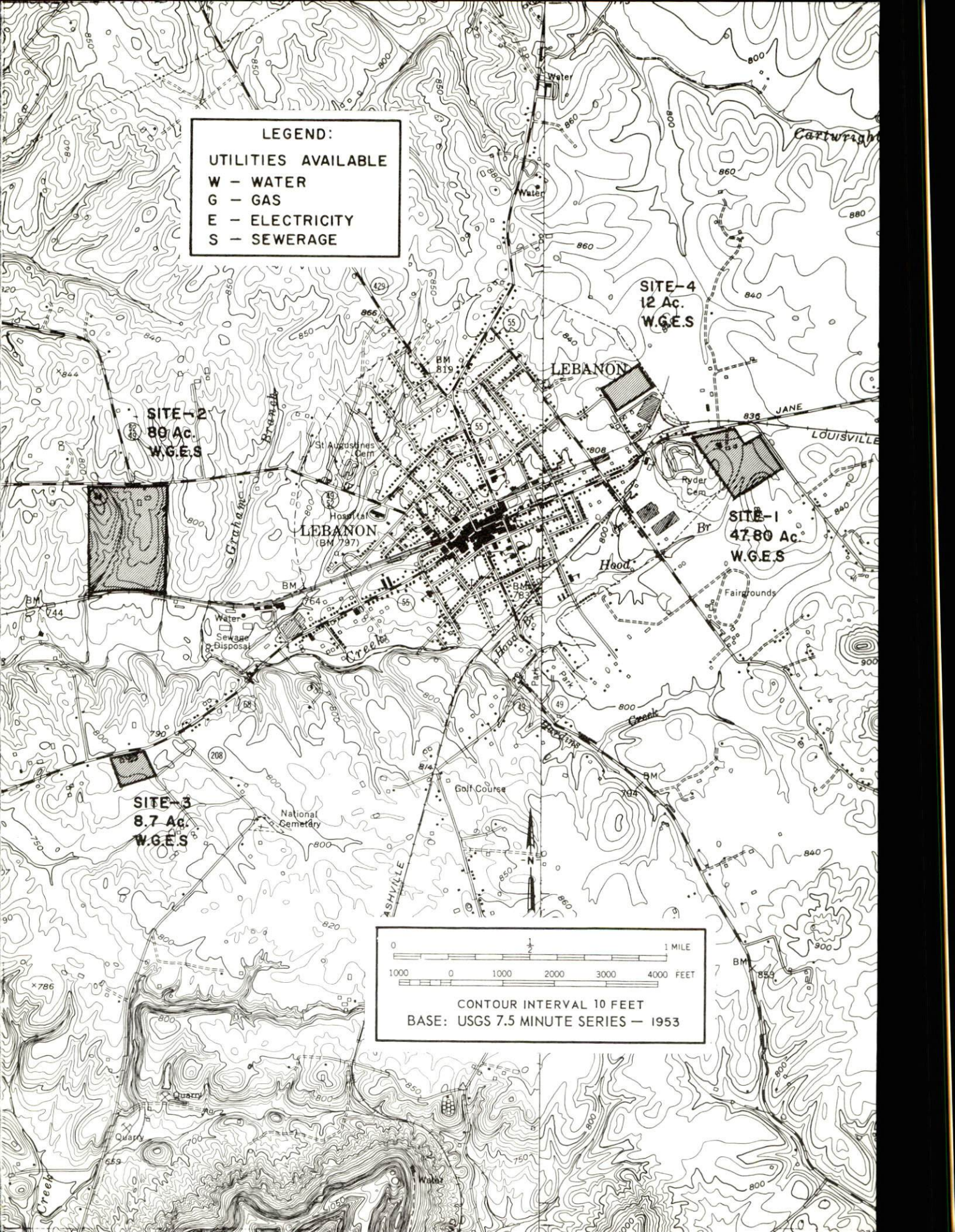
UTILITIES AVAILABLE

W - WATER

G - GAS

E - ELECTRICITY

S - SEWERAGE

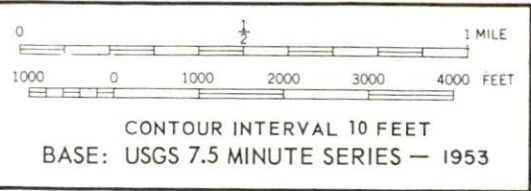


SITE-2
89 Ac.
W.G.E.S

SITE-4
12 Ac.
W.G.E.S

SITE-1
47.80 Ac.
W.G.E.S

SITE-3
8.7 Ac.
W.G.E.S



INDUSTRIAL RESOURCES

LEBANON, KENTUCKY

Prepared by

The Kentucky Department of Commerce

in cooperation with

The Lebanon Chamber of Commerce, Inc.

Frankfort, Kentucky

1969

This copy has been prepared by the Kentucky Department of Commerce,
Division of Research and Planning, and the cost of printing paid from
state funds.

TABLE OF CONTENTS

<u>Chapter</u>	<u>Page</u>
INDUSTRIAL SITES	i
LEBANON, KENTUCKY, A PROFILE	1
THE LABOR MARKET	3
Population	3
General Employment Characteristics	3
Manufacturing Economy	4
Labor Organizations	6
Wage Levels	6
Labor Supply	8
Income	8
EDUCATION	9
Elementary and High Schools	9
Vocational Schools	11
Colleges	11
TRANSPORTATION	13
Rail	13
Highways	13
Truck Service	14
Air	14
Other Transportation Services	15
POWER AND FUEL	16
Electricity	16
Natural Gas	16
Coal	17
Fuel Oil	18
WATER AND SEWERAGE	19
Water	19
Sewerage	20

<u>Chapter</u>	<u>Page</u>
AGRICULTURE-NATURAL RESOURCES-CLIMATE	21
Agriculture	21
Mineral Resources	21
Water Resources	21
Forests	22
Climate	22
LOCAL GOVERNMENT	23
Structure	23
Finance	23
Taxes	23
Planning and Zoning	24
Safety	24
Fire	24
Police	24
Sanitation	25
HEALTH	26
Hospitals	26
Nursing Homes	26
Public Health	26
OTHER LOCAL FACILITIES	28
Housing	28
Communication	28
Telephone	28
Telegraph	28
Postal	28
Newspapers	28
Radio	28
Television	28
Libraries	28
Churches	29
Financial Institutions	29
Hotels and Motels	31
Clubs and Organizations	31
Recreation	31
Community Improvements	33
HISTORY	34

LEBANON, KENTUCKY, A PROFILE

Location

Lebanon - a city of 5,800 residents - is the county seat and trade center of Marion County. Located on the fringe of Kentucky's beautiful and productive Bluegrass Region, Lebanon is only 60 miles southeast of Louisville and 65 miles southwest of Lexington.

The Economy

Marion County is now and has been in the past a predominantly agricultural county; however, manufacturing and trade and services are becoming increasingly important segments of the county's economy. In 1968, employment totaled approximately 5,260, of which 1,590 were employed in agriculture, 1,000 in manufacturing, and 1,000 in trade and services. Over 500 new manufacturing jobs have been added during the 1960's. Per capita income in 1968 was \$1,934, representing a gain of \$1,047 during the previous nine years. Total personal income in 1968 was \$30,948,000, an increase of \$16,536,000 since 1959. Wage rates, labor supply, available industrial sites, and community attitudes indicate additional economic growth.

Lebanon is near the middle of a seven-county area with about 40,000 jobs. There are 10,000 manufacturing jobs in the area, and since 1959 industrial employment has increased by 63 percent. Other important economic activities are: agriculture (9,500), trade and services (6,900), and government (2,900).

Labor Supply

There is a current labor supply of 4,000 men and 3,100 women within reasonable commuting distance of Lebanon. This supply will be augmented by 6,300 young men and 5,960 young women who will become 18 years of age during the next five years.

Industrial Sites and Services

Four industrial sites, ranging from 8.7 acres to 80 acres, are now available in Lebanon. The sites have all utilities. An Industrial Committee has been formed which constantly seeks to provide sites attractive to industry.

Rail service is provided to Lebanon by the Louisville & Nashville Railroad.

Two-lane highway access to Lebanon is by one federal and five Kentucky routes. An interchange of the Bluegrass Parkway is located 21 miles northeast of Lebanon.

Trucking service is available from four firms, one of which maintains terminal facilities in the city.

Commercial air service is available at Standiford Field, Louisville, 60 miles distant, and Blue Grass Field, Lexington, 65 miles distant.

Ample supplies of power and fuels are available. Electric power is provided by the Kentucky Utilities Company and the Inter-County Rural Electric Cooperative Corporation. Natural gas is supplied by the Western Kentucky Gas Company.

Education

The Marion County School System provides an excellent program of elementary and secondary education; location of the Marion County Vocational Extension Center in Lebanon has increased the vocational educational opportunities; and sixteen colleges and universities are within an approximate 65-mile radius of Lebanon.

Recreation

Recreation in the Lebanon area is varied and plentiful.

Located 3 miles from Lebanon is a 35-acre lake, built and maintained by the Marion County Sportsman's Club.

Facilities in Lebanon consist of two parks covering an area of 55 acres, one of which has a swimming pool, two baseball diamonds, two tennis courts, and related facilities. The Lebanon Golf Course has a 9-hole golf course.

Lexington, 65 miles distant, boasts two fine race tracks - Keeneland Race Course and the "Big Red Mile" Trotting Track. Louisville, 60 miles distant, has Churchill Downs and the spectacular Kentucky Derby, Louisville Downs, and Miles Park.

Intercollegiate athletic competition is found at the University of Kentucky, Lexington, and the University of Louisville. Major league sports may be found in Cincinnati - home of the baseball Reds, the basketball Royals, and the football Bengals.

Lexington has Centennial Theater; Louisville has a symphony orchestra and Actors Theater.

Further recreational diversity is found in the state parks located in the Lebanon area.

THE LABOR MARKET

Population

Lebanon has experienced a slow, steady increase in population since the turn of the century. According to a recent estimate, Lebanon's population reached 5,800 in 1968. Growth during the 1960 decade has been due partly to increased job opportunities and annexation.

Marion County has experienced a loss in population since 1950. This population loss is an indication that people are leaving the agricultural section of the county to go to other areas where job opportunities are more plentiful.

TABLE 1
POPULATION TREND - LEBANON AND MARION COUNTY,
KENTUCKY 1/

Year	Lebanon		Marion County	
	Population	% Change	Population	% Change
1900	3,043		12,290	
1950	4,643	52.6	17,212	5.7
1960	4,813	3.7	16,887	-1.9
1968	5,800 <u>2/</u>	20.5		
1969			15,900 <u>3/</u>	-5.8

General Employment Characteristics

During 1968 total employment in Marion County averaged 5,260, with 1,590 employed in agriculture, 1,000 in manufacturing, 1,000 in trade and services, and more than 400 in government.

Total employment in the Lebanon labor market area, which includes Marion, Boyle, Casey, Larue, Nelson, Taylor, and Washington Counties, averaged 40,000 during 1968. Agriculture accounted for 9,500 jobs, manufacturing 10,000, trade and services 6,900, and government 2,900.

Manufacturing Economy

Manufacturing activity in Marion County has increased during the 1960's. Manufacturing employment totaled 1,013 in September, 1968, for a 104.6 percent increase during the past nine years. Approximately 51 percent of industrial employment is female.

Fifteen firms in Marion County are engaged in manufacturing activity and produce 19 different products. The greatest production concentrations are in metal products, lumber, and apparel. Five manufacturing firms employ 100 or more workers.

Four of the county's manufacturing firms began production during the 1960's. These firms presently employ approximately 400 persons. In 1968, one company announced plans to expand its facilities and additional investment is estimated at \$100,000.

TABLE 2
LEBANON MANUFACTURING FIRMS, THEIR PRODUCTS,
AND EMPLOYMENT ^{4/}

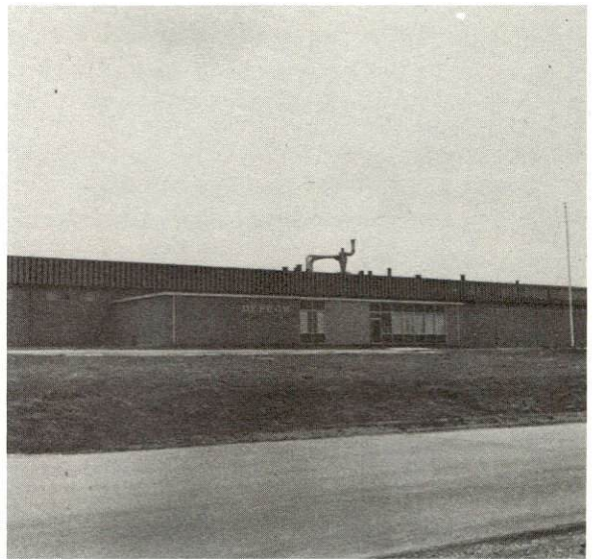
Firm	Product	Employment		
		Total	Male	Female
Bourbon Cooperage Co.	White oak whisky barrels	162	160	2
Dayton Etched Products Corp.	Name plates, plaques, metal decorative trim	250	125	125
Deeps Farm Supply	Feed	4	4	0
Jane Sportswear Co.	Ladies' sportswear	207	27	180
Kemp Lumber Co.	Rough lumber, dimension stock	11	11	0
The Lebanon Enterprise	Newspaper, job printing	6	1	5
Lebanon Machine Shop	Machine shop	3	3	0
Lebanon Oak Flooring Co.	Flooring, furniture dimension	91	89	2
Lebanon Ready Mix Concrete Co.	Ready mixed concrete	5	5	0
Linda Sportswear	Ladies' blouses	119	6	113
Modern Concrete Products Co.	Ready mixed concrete	5	5	0
Professional Molded Products	Foot shaped molded shoes	3	1	2
Swift & Co.	Cheese	11	10	1
T & H Feed Service	Feed	5	5	0
Telecom, Inc.	Intercom equipment, teaching laboratory equipment, switchboards	140	45	95



TELECOM, INC.



BOURBON COOPERAGE CO.



DEPCOR

In the Lebanon labor market area there were 10,000 employed in manufacturing in September, 1968, a 63 percent increase since 1959. Growth during the past nine years has been sharpest in the apparel industry.

Thirty-seven of the manufacturing plants in the area began operations during the 1960's.

TABLE 3

MANUFACTURING EMPLOYMENT, LEBANON LABOR MARKET AREA
SEPTEMBER, 1968 ^{5/}

Industry	Employment
TOTAL	10,016
Food and beverages	1,568
Apparel	5,378
Metal products and machinery	776
Lumber and furniture	906
Other	1,388

Labor Organizations

The following unions are represented in Lebanon:

<u>Union</u>	<u>Company</u>
Coopers' International Union of North America	Bourbon Cooperage Co.
International Union of Ladies' Garment Workers	Linda Sportswear Jane Sportswear Co.
International Woodworkers of America	Lebanon Oak Flooring Co.
International Union of Electrical Radio and Machine Workers, AFL-CIO	Telecom, Inc. Depcor

Wage Levels

The 1968 average weekly wage in all industries covered by unemployment insurance in Marion County was \$88.09, and \$90.30 for manufacturing. Comparable figures for Kentucky were: \$112.16 for all industries; \$123.97 for manufacturing. Average weekly wages in all counties in the Lebanon labor market area were below the Kentucky averages leading to a tentative

conclusion that workers can be recruited for jobs in Marion County at about the minimum wage level for production jobs. Some examples of specific occupational wage rates are:

<u>Production Employees</u>	<u>Wages Per Hour</u> ^{6/}		
	<u>Starting</u>	<u>Maximum</u>	<u>Prevailing</u>
Assembler	\$1.60	\$1.80	\$1.70
Drill Press Operator	1.60	1.80	1.70
Inspector	1.65	1.85	1.75
Lathe Operator	1.60	1.80	1.70
Machinist, Set Up	1.70	2.00	1.80
Production Laborer	1.60	1.80	1.70
Punch Press Operator	1.60	1.80	1.70
Sprayer or Painter	1.70	1.90	1.80
Welder, Arc or Acetylene	1.70	1.90	1.80
Welder, Resistance or Spot	1.60	1.80	1.70
 <u>Service Employees</u>			
Carpenter	\$1.75	\$2.50	\$2.00
Crane Operator	1.75	2.50	2.00
Electrician	2.00	3.00	2.50
Janitor	1.60	1.80	1.70
Laborer	1.60	1.80	1.70
Machinist	1.80	2.50	2.00
Mechanic, Maintenance	1.75	2.25	1.90
Shipping Clerk	1.75	2.15	1.90
Truck Driver	1.70	2.00	1.80
Welder, Acetylene, Carbon & Arc.	1.80	2.25	2.00
 <u>Office Employees</u>			
Bookkeeper or Accounting Clerk	\$1.70	\$2.25	\$1.80
Chief Clerk	1.80	2.50	2.00
Draftsman	2.00	3.00	2.25
File Clerk	1.60	1.80	1.70
Receptionist	1.60	1.80	1.70
Secretary	1.75	2.00	1.85
Stenographer	1.75	2.00	1.85
Typist	1.65	1.90	1.75

Labor Supply

There is an estimated current labor supply of 4,000 men and 3,100 women available for industrial jobs in the Lebanon labor market area. The current labor supply includes the unemployed, underemployed, and persons who would enter the labor force if jobs become available. During the next five years 6,300 boys and 5,960 girls will become 18 years of age, augmenting the labor supply.

Workers could be expected to commute to Lebanon mainly from Casey, Larue, Nelson, and Washington Counties in response to job opportunities. However, the number of workers who would be available for jobs at Lebanon would depend on a number of factors including wage scales and working conditions.

TABLE 4

CURRENT AND FUTURE LABOR SUPPLY- LEBANON LABOR MARKET AREA

County	Current Labor Supply ^{7/} 1969			Future Labor Supply by 1975 ^{8/} (Becoming 18 Years of Age)		
	Total	Male	Female	Total	Male	Female
Labor Market Area	7,111	3,975	3,136	12,285	6,325	5,960
Marion	730	476	254	2,184	1,089	1,095
Boyle	561	337	224	1,997	988	1,009
Casey	1,838	1,079	759	1,557	794	763
Larue	552	308	244	1,141	575	566
Nelson	1,603	767	836	2,621	1,469	1,152
Taylor	661	378	283	1,625	820	805
Washington	1,166	630	536	1,160	590	570

Income

The total personal income in Marion County in 1968 was estimated at \$30,948,000. Per capita income was \$1,934 for a gain of \$1,047 during the previous nine years. ^{9/}

EDUCATION

The educational system in the Lebanon area has the facilities to produce an effective labor force for future industrial growth.

Elementary and High Schools

The Marion County School System is comprised of two high schools, which have received standard ratings from the Kentucky Board of Education, and seven elementary schools. Vocational programs offered to the students include home economics, agriculture, industrial arts, and business education. The special instructional staff includes guidance counselors, teachers for educable and trainable mentally retarded children, remedial reading teachers, and remedial physical education teachers.

Employment for the 1968-69 school year totaled 182 professional and 132 nonprofessional personnel. The county school system's 1968-69 budget was \$2,107,000.

Construction of a new \$2 million Central High School is now underway with completion expected by September 1970. The site of the new school is adjacent to the Vocational Extension Center. Plans for an athletic field have been incorporated into the Central High School project.

There are five parochial schools located in Marion County. The schools had a total 1968-69 enrollment of 1,112 students and employed 46 teachers.



LEBANON HIGH SCHOOL

TABLE 5

SCHOOLS, ENROLLMENT, NUMBER OF TEACHERS, STUDENT-TEACHER RATIO IN LEBANON AND MARION COUNTY, 1968-69 ^{10/}

School	Enrollment	No. of Teachers	Student-Teacher Ratio
Bradfordsville Elementary	201	10	20-1
Calvary Elementary	220	10	20-1
Glasscock Elementary	539	23	23-1
Lebanon Elementary	805	33	24-1
Lebanon High	577	26	22-1
Raywick Elementary	183	9	20-1
St. Charles Elementary	525	20	26-1
St. Charles High	637	32	20-1
St. Joseph Elementary	93	4	23-1
Holy Cross Elementary (Par.)	191	9	21-1
St. Augustine Elementary (Par.)	397	13	31-1
St. Augustine High (Par.)	184	11	17-1
St. Francis Elementary (Par.)	303	10	30-1
St. Mary's Seminary (Par.)	37	3	12-1

Vocational Schools

The new Marion County Extension Center, affiliated with the Jefferson County Area Vocational School, is located in Lebanon. Instruction is offered in auto mechanics, carpentry, drafting, welding, and business and office education. The teaching staff now numbers 9 and the day-student enrollment is approximately 237.

The Jefferson County Area Vocational School, Jeffersontown, only 60 miles from Lebanon, offers a wider range of courses including appliance repair, auto body repair, commercial foods, electronics technician, health occupations, machine shop, office machines repair, printing, radio and TV repair, and practical nursing. In addition to regular preparatory classes, upgrading courses are offered in evening extension classes for employed persons. Special courses are also available for eligible people under the Manpower Development and Training Act.

Colleges

Lebanon's location in Central Kentucky places it near many excellent colleges and universities.

Campbellsville College, Campbellsville, is 20 miles south of Lebanon. This coeducational, liberal arts, four-year institution confers

two degrees: the Bachelor of Arts and the Bachelor of Science.

Centre College, Danville, is 30 miles east of Lebanon, and Saint Catherine Academy, Springfield, is only 10 miles to the north.

Other institutions of higher learning within a 65-mile radius of Lebanon include:

<u>College or University</u>	<u>Location</u>	<u>Distance in Miles</u>
Eastern Kentucky University	Richmond	65
Berea College	Berea	62
Jefferson Community College	Louisville	60
Bellarmino-Ursuline	Louisville	60
University of Louisville	Louisville	60
Catherine Spalding	Louisville	60
Lindsey Wilson Junior College	Columbia	39
Elizabethtown Community College	Elizabethtown	45
Nazareth College	Nazareth	29
Transylvania College	Lexington	65
University of Kentucky	Lexington	65
Lexington Technical Institute	Lexington	65

TRANSPORTATION

Rail

Lebanon is served by a branch line of the Louisville & Nashville Railroad, connecting with two main lines that run from Cincinnati to Atlanta and from Cincinnati to New Orleans. There are two local freights and two through freights daily. Switching service is provided and sidings are available to accommodate 125 cars.

The average number of inbound carloads per month is 116. Outbound carloads average 38 per month.

The nearest piggyback facilities are located at Danville, 31 miles from Lebanon.

REA Express provides Lebanon with pickup and delivery service Monday through Friday from 7 am to 3 pm.

TABLE 6

RAILWAY TRANSIT TIME FROM LEBANON, KENTUCKY, TO: 11/

City	No. of Days CL	City	No. of Days CL
Atlanta, Ga.	2	Los Angeles, Calif.	5
Birmingham, Ala.	2	Louisville, Ky.	1
Chicago, Ill.	3	Nashville, Tenn.	2
Cincinnati, Ohio	2	New Orleans, La.	3
Cleveland, Ohio	3	New York, N. Y.	4
Detroit, Mich.	4	Pittsburgh, Pa.	4
Knoxville, Tenn.	1	St. Louis, Mo.	2

Highways

Highways serving Lebanon include U. S. Route 68 and Kentucky Routes 55, 49, 429, 52, and 84. An interchange of the Bluegrass Parkway is located 21 miles northwest of Lebanon. The Parkway serves as a link in the network of major highways providing easy access to the major markets of the nation.

Marion County has been apportioned approximately \$90,000 for its County Road Aid Program during the 1969 fiscal year. The funds will be used for the maintenance and improvements of 85 sections of Marion County roads totaling a distance of 142.4 miles.

Truck Service: Lebanon is served by the following truck lines:

<u>Company</u>	<u>Home Office</u>
McDuffee Motor Freight, Inc.	Lebanon, Kentucky
Bestway Express, Inc.	Nashville, Tennessee
Central Motor Express, Inc.	Campbellsville, Kentucky
United Parcel Service	Louisville, Kentucky

TABLE 7

HIGHWAY MILES AND TRUCK TRANSIT TIME FROM
LEBANON, KENTUCKY, TO SELECTED MARKET CENTERS

City	Highway Miles	Delivery Time (Days)		City	Highway Miles	Delivery Time ^{12/}	
		LTL	TL			LTL	TL
Atlanta, Ga.	370	2	1	Los Angeles, Calif.	2,193	6	5
Birmingham, Ala.	364	2	1	Louisville, Ky.*	60	1	1
Chicago, Ill.*	360	2	1	Nashville, Tenn.	160	1	1
Cincinnati, Ohio*	150	2	1	New Orleans, La.	717	3	2
Cleveland, Ohio*	384	2	1	New York, N. Y.*	753	3	2
Detroit, Mich.*	432	3	1	Pittsburgh, Pa.*	461	3	2
Knoxville, Tenn.	216	2	1	St. Louis, Mo.*	321	2	1

*These points presently not being served by Bestway Express, Inc.; however, application for service is pending.

Air

Lebanon is located approximately 60 miles southeast of Standiford Field, Louisville, which is served by Allegheny, American, Delta, Eastern, Ozark, Piedmont, Northern, and Trans World Airlines. One hundred and eight scheduled flights daily are handled at Standiford Field.

Approximately 65 miles northeast of Lebanon is Blue Grass Field, Lexington, which is served by Eastern, Delta, Piedmont, and Allegheny Airlines with 28 flights daily. There are three paved runways - 6,500 by 150 feet, 3,500 by 150 feet, and 3,500 by 150 feet. Services include Weather Bureau and FAA Communication; charter service; U-Drive-It service; 80, 100, 145 octane fuel; jet fuel; major A&E repairs; storage; restaurant; flight instruction; and taxi.

The recently organized Lebanon-Springfield Airport Board is comprised of six members. The 135-acre plot of land on which the new airport facilities are being constructed is located on the county line dividing Marion and Washington Counties. The 2,850 by 60 foot runway has been paved and

an additional 1,000-foot turf landing strip, which will be provided in the near future, has been approved. Unicom radio facilities, office space, sandwich facilities and courtesy car service are now available. Construction of a hangar is being planned.

Other Transportation Services

The Southern Greyhound Bus Lines serves Lebanon with two buses north to Louisville and two buses south to Columbia daily.

Taxi service is provided by the Lebanon Cab Company, which operates from 7 am to 8 pm, and the Marion Cab Company, which provides 24-hour service.

Truck and U-Haul trailer rentals are available.

POWER AND FUEL

Electricity

Lebanon is supplied electric power by the Kentucky Utilities Company. The company serves 1,957 residential customers, 395 rural customers, 403 commercial customers, and 13 industrial customers in the immediate vicinity of Lebanon. A 10,000 KVA distribution substation is located within the city limits. The peak KW used in a 24-hour period has been 6,864. A 50,000 KVA transmission substation is located near the northeastern city limits. A \$56,000 expansion of the distribution substation and secondary facilities was just completed in the Fall of 1968.

The Kentucky Utilities Company has a generating capacity of approximately 740,000 KW in its six generating stations. Interconnections with nine neighboring utility companies provide a means of interchanging substantial blocks of electricity when desired. Kentucky Utilities Company rates for large industrial use may be obtained from the company's Industrial Development Department, Lexington, Kentucky, or the Kentucky Department of Commerce, Frankfort, Kentucky.

The Inter-County Rural Electric Cooperative Corporation serves 2,082 customers in Marion County. A \$50,000 expansion is planned by Inter-County RECC to serve the new Central High School which is to be constructed in 1969. East Kentucky RECC, with a present capacity of 276,000 KW and an additional 200,000 KW unit under construction, is the generation-transmission source. East Kentucky also has interconnections with other major generating sources. Rates for industry may be obtained from Inter-County RECC, Danville, Kentucky; East Kentucky RECC, Winchester, Kentucky; or the Kentucky Department of Commerce, Frankfort, Kentucky.

Natural Gas

Natural gas is distributed to 1,816 customers in the immediate Lebanon vicinity by the Western Kentucky Gas Company. The source of supply is the Tennessee Gas Transmission Company, which has a 30- and a 26-inch line located approximately 5 miles from Lebanon. The Western Kentucky Gas Company maintains a 6-inch transmission line which brings gas into the city. The distribution system is made up of 4-, 3-, and 2-inch lines.

The BTU content per cubic foot is 1,020 and specific gravity is .587.

The company is planning to extend its service area approximately 1 1/2 miles out the Danville Highway, providing service to an estimated 22 residential customers and 2 schools.

Western Kentucky Gas Rates

General service rate 1, for entire service area of Western Kentucky Gas Company effective March 15, 1967.

First	1,000 cu. ft. or less per month	\$1.50
Next	2,000 cu. ft. per month	.0895 per 100 cu. ft.
Next	7,000 cu. ft. per month	.0715 per 100 cu. ft.
Next	40,000 cu. ft. per month	.0655 per 100 cu. ft.
All additional	cu. ft. per month	.0585 per 100 cu. ft.

Rate 3-A:

Gas service under this rate is available only to customers who require and contract for not less than 100,000 cubic feet per day, or 24,000,000 cubic feet per year. Service may be 100 percent interruptible, or 100 percent firm, or a combination of the two. The cost shall be:

Interruptible Service

First	2,000,000 cu. ft. per month	\$950.00
Next	2,000,000 cu. ft. per month	44.5¢ per M cu. ft.
Next	2,000,000 cu. ft. per month	42.5¢ per M cu. ft.
All additional	cu. ft. per month	36.5¢ per M cu. ft.

Minimum Charge: \$950.00 per meter per month

If additional information is needed, contact the Industrial Development Department, Western Kentucky Gas Company, Owensboro, Kentucky.

Coal

Lebanon is served by both the Eastern and Western Kentucky Coal Fields. A representative delivery cost for coals can be determined for each district shown below:

<u>Point of Origin</u>	<u>Freight Delivery Cost ^{13/} (Net Ton)</u>
Jellico-Middlesboro	\$3.06
Harlan	3.06
Hazard	3.43
West Kentucky	3.54

Fuel Oil

Kentucky has three fuel oil refineries which are located in Catlettsburg, Louisville, and Somerset. Kentucky's fuel supply is supplemented by border state operations.

Delivered prices of the various grades may be obtained from the Kentucky Department of Commerce.

WATER AND SEWERAGE

Water

The Lebanon Water Works Company supplies treated water to 1,720 customers in the immediate vicinity of Lebanon. The source of raw water is the Rolling Fork River. The treatment plant has a daily capacity of 2,000,000 gallons. Treatment consists of settling, filtration, chlorination, and fluoride. Average daily use is 700,000 gallons; peak daily water use has been 864,000 gallons. The water is distributed at an average pressure of 74 psi through 16-, 12-, and 10-inch lines. Treated water is stored in a 450,000-gallon standpipe and a 902,000-gallon standpipe.

Monthly Rates:

<u>Cubic Feet</u>	<u>Amount</u>	<u>Cubic Feet</u>	<u>Amount</u>
200	\$ 2.50	1,700 to 1,800	\$11.10
200 to 300	3.10	1,800 to 1,900	11.60
300 to 400	3.70	1,900 to 2,000	12.10
400 to 500	4.30	2,000 to 2,100	12.50
500 to 600	4.90	2,100 to 2,200	12.90
600 to 700	5.50	2,200 to 2,300	13.30
700 to 800	6.10	2,300 to 2,400	13.70
800 to 900	6.60	2,400 to 2,500	14.10
900 to 1,000	7.10	2,500 to 2,600	14.50
1,000 to 1,100	7.60	2,600 to 2,700	14.90
1,100 to 1,200	8.10	2,700 to 2,800	15.30
1,200 to 1,300	8.60	2,800 to 2,900	15.70
1,300 to 1,400	9.10	2,900 to 3,000	16.10
1,400 to 1,500	9.60		
1,500 to 1,600	10.10		
		Next 2,000 cu. ft. ,	
		40¢ per 100 cu. ft.	
		Next 10,000 cu. ft. ,	
		35¢ per 100 cu. ft. ,	
		All over 15,000 cu. ft. ,	
		25¢ per 100 cu. ft.	

The Marion County Water District is under construction, with service expected to begin in the Fall of 1969. Approximately 290 customers in western Marion County will be served. Treated water will be purchased from the Lebanon Water Works. The Water District will maintain 8,000 feet of 4-inch lines, 30,000 feet of 3-inch lines, 69,000 feet of 6-inch lines, and one 75,000-gallon elevated storage tank. Future plans include the construction of a 100,000-gallon standpipe.

Sewerage

Lebanon's new sewerage system is expected to be in operation by September 1969. The new system will have a treatment capacity of 1,500,000 gpd and will provide both primary and secondary treatment. The system maintains 18-, 12-, 8-, and 6-inch sanitary mains and 12-inch storm mains. Approximately 98 percent of the city is served. Treated effluent is emptied into Hardin's Creek.

In addition to the new treatment plant, 7,600 feet of new interceptor lines have been laid.

Rates

	<u>Cubic Feet Per Month</u>	<u>Per 100 Cubic Feet</u>
Less than	200	\$1.625
Next	500	.39
Next	1,200	.325
Next	3,100	.26
Next	10,000	.2275
All over	15,000	.1625

Or by negotiation with the City of Lebanon.

AGRICULTURE - NATURAL RESOURCES - CLIMATE

Agriculture

The approximate total land area of Marion County is 219,520 acres, with 88 percent of the area devoted to farm land. In 1964 there were 1,263 farms in the county with an average size of 154 acres.

Farm income in the county is primarily from burley tobacco, supplemented substantially by dairying, cattle, and hogs. The 1964 value of sales of all farm products totaled \$7,276,611, averaging \$5,761 per farm. Crop sales totaled \$3,448,958; livestock and livestock products totaled \$3,819,003.

In 1967, agricultural production in Marion County included 4.5 million pounds of burley tobacco, 864,000 bushels of corn, and 5,670 tons of alfalfa hay. Livestock on farms on January 1, 1968, included 38,200 cattle and calves, 20,000 hogs and pigs, and 1,100 sheep and lambs. Milk cows on farms during 1966 averaged 6,000 head with milk production for the year totaling 41.1 million pounds.

Mineral Resources

The principal mineral resources of Marion County are limestone and dolomite. Other minerals which have identified but to no commercial significance are sand and gravel and clay.

Dolomite in the northwestern portion of the county offers a potential source of near high magnesium stone (40 percent or more $MgCO_3$). One quarry was in operation during 1965.

Water Resources

The largest supply of surface water is available from Rolling Fork, Salt River. Other sources are secured from impounded small streams. The average discharge of Rolling Fork near Lebanon is 314 cfs (26-year record, USGS).

The expected yield of ground water in Marion County, with the exception of a small area in the eastern portion, is 5 gpm or less. The remaining area is expected to yield 5-50 gpm, which is a potential for industrial water supplies. Exceptions may be found in restricted areas.

Forests

There are 82,200 acres of commercial forest land in Marion County, covering 37.4 percent of the total land area. The most abundant species are white oaks, red oaks, hickories, yellow poplar, beech, hard maple, and ash.

Within a 50-mile radius of Lebanon are 1,612,000 acres of commercial forest land. In 1962, 87 million board feet of timber were harvested from this area. While some of the timber harvest is used locally, much of it is shipped out of the area for further processing.

Forests of the entire area receive organized protection from fire from the State Department of Natural Resources.

Climate

Lebanon has a temperate climate. Winters are moderately cold with an average temperature of 35°. Temperatures during the spring and fall months range in the middle fifties. Summers are warm and humid with an average temperature of 75°.

Precipitation is moderate and ample. The winter, spring and summer seasons each receive about 11.5 inches of rain. The fall season is the driest with 9.25 inches.

Lebanon gets some snowfall each winter and the seasonal amounts are extremely variable. As a rule, the ground remains covered with snow for only a few days at a time.

LOCAL GOVERNMENT

Structure

Lebanon, a fourth-class city and county seat, is governed by a mayor elected for a four-year term and six councilmen elected for two-year terms.

Marion County is governed by a fiscal court composed of a county judge and eight magistrates. All are elected for four-year terms.

Finance

The City of Lebanon had a general income of \$226,576 for the 12 months ending June 30, 1968, while expenditures totaled \$221,606. During the same period, the Lebanon Water Works Company had an income of \$180,157 and expenditures totaled \$149,986. Bonded indebtedness outstanding of the city as of November 1, 1968, was \$570,000 in water revenue bonds and \$380,000 in sewer revenue bonds. The Lebanon Water Works Company is operated independently from the City of Lebanon; however, the city has assumed primary liability for the water revenue bonds. Industrial bonded indebtedness outstanding of the city as of June 30, 1968, was \$1,621,000.

Marion County's estimated budget for the fiscal year 1968-69 was \$168,824. As of July 1, 1969, County School System bonds outstanding totaled \$3,301,000.

Taxes

Property taxes are the major source of income for Lebanon and Marion County. Property must be assessed at 100 percent of value under provisions of the Kentucky Constitution. Net assessed value of property in these jurisdictions is as follows:

<u>Classes of Property</u>	<u>Lebanon, 1968</u>	<u>Marion County, 1968-69</u>
Real Estate & Tangibles	\$22,147,159	
Real Estate		\$59,364,686
Tangibles		8,036,251
Public Service	1,660,748	13,750,185

Property tax rates for Lebanon and Marion County are shown on the following page.

TABLE 8

PROPERTY TAX RATES PER \$100 OF ASSESSED VALUE FOR
LEBANON AND MARION COUNTY, 1968^{14/}

Taxing Unit*	Lebanon	Marion County
State	\$.015	\$.015
County **	.191	.191
School	.533	.533
City	.275	
Total	\$1.014	\$.739

*Special tax for fire protection (not county-wide) \$.020.

**\$.191 county tax includes county-wide health tax of \$.024 and library tax of \$.020.

The City of Lebanon requires business licenses. Fees range from a minimum of \$4 to a maximum of \$60 annually.

Lebanon is empowered by state law to allow a five-year exemption from municipal taxation for new industry.

Planning and Zoning

The six-member Lebanon Planning and Zoning Commission has completed the following projects: Comprehensive Plan, Subdivision Regulations (revised), Zoning Ordinance (revised), Capital Improvements Program and Neighborhood Analysis.

The city has a current Workable Program for Community Improvement and has adopted and enforces codes.

Safety

Fire: Lebanon has a Class-7 American Insurance Association fire rating. The Lebanon Fire Department is staffed by a part-time chief and 15 volunteers. Major equipment includes a 1937 Ahren Fox 750-gpm pumper truck; a 1954 Mack 750-gpm pumper truck; a 1963 International 750-gpm pumper truck; and an electrical generating truck with auxiliary 250-gpm pumper. Other equipment includes a rescue truck and foam equipment.

Police: The Lebanon Police Department is staffed by a chief, nine patrolmen, three radio dispatchers, and a clerk. Motorized equipment consists of three radio-equipped patrol cars. Radio contact is maintained

with the sheriff's department and the state police. Other equipment includes two walkie-talkies, fingerprint equipment, riot equipment, breathalyzer, and cameras.

The Marion County Sheriff's Office is staffed by the sheriff and two deputies. Privately owned cars are utilized.

Sanitation

The City of Lebanon provides free garbage collection service daily in the business district. Collection in the residential areas is provided weekly at a rate of \$1.50 per month. Disposal is by the land fill method.

The Sanitation Department is staffed by five employees and equipment includes a new 1969 Leach Packer, Garwood Packer, vacuum operated shreader, and a street sweeper.

HEALTH

Hospitals

Lebanon is served by the Mary Immaculate Hospital. This modern hospital has 79 beds, 23 bassinets, obstetric ward, electrocardiogram, X-ray and laboratory facilities, 2 operating rooms, and an emergency room. The hospital is staffed by 8 full-time registered nurses, 4 part-time registered nurses, 6 full-time licensed practical nurses, 2 part-time licensed practical nurses, 5 laboratory technicians, 2 X-ray technicians, 2 surgical technicians, 4 pathologists, 6 surgeons, 5 general practitioners, 1 EENT specialist, and 48 aides.

Nursing Homes

The Marion Manor Nursing Home, a 38-bed facility, is financed and operated by the Mary Immaculate Hospital.

The Cedars of Lebanon Rest Home is located in Lebanon. This licensed home for the aged has 34 beds.

Public Health

The Marion County Health Department is located in Lebanon. Personnel includes a health officer, 2 nurses, a clerk, a sanitarian, and 4 on the family planning staff. Major services provided by the county health department include immunization and tests, venereal disease and tuberculosis control, maternal and child health, health education, family planning, comprehensive care, mental health, dental health, chronic disease control, crippled and handicapped children, and vital statistics.

The 1968-69 budget was \$42,791.



MARY IMMACULATE HOSPITAL



MARION COUNTY HEALTH CENTER

OTHER LOCAL FACILITIES

Housing

There is a limited supply of rental housing in Lebanon. The rental range for a two- or three-bedroom house ranges from \$50 to \$100 per month. One 10-unit, 2-story brick veneer apartment building was recently constructed. There is a good supply of houses for sale in the city. The construction cost of an average three-bedroom brick veneer house with 1 1/2 baths, concrete block basement, and carport ranges between \$16,500 and \$19,500, excluding cost of lot. There are five established subdivisions in Lebanon and building lots are plentiful.

Communication

Telephone: A modern dial system is provided to 3,178 customers in Marion County by the General Telephone Company.

Telegraph: The Western Union Telegraph Company serves Lebanon and maintains an office in the Electric and Gas Company. Service is provided from 7:00 a.m. to 5:30 p.m., Monday through Saturday.

Postal: Lebanon has a first-class post office staffed by 16 employees. Mail is dispatched and received two times daily, except Sundays and holidays when it is dispatched and received once daily. The post office serves five rural routes. Mail deliveries are made once daily in the business district. The postal receipts for 1967-68 totaled \$88,535.

Newspapers: The Lebanon Enterprise, a weekly paper published each Thursday, has an approximate circulation of 5,300.

Other newspapers are received daily from Louisville, Kentucky.

Radio: Lebanon's local radio station is WLBN at 1590 kilocycles. The station serves the area with 1,000 watts of power, operating from sunrise to sunset.

Television: Television reception is good from stations in Lexington and Louisville, Kentucky. Programs are received by the use of outside antennas.

Libraries

The Marion County Public Library, a member of the Lincoln Park Library Region, serves the Lebanon area with a total of 13,217 volumes.

In April, 1968, the library circulated 2,564 volumes and 97 records, obtained 56 inter-library loans, recorded 190 reference transactions, and borrowed 2 films from the Kentucky Department of Libraries. During this same period of time, the bookmobile circulated 5,821 volumes and 219 records. The staff consists of one librarian, one assistant librarian, one bookmobile librarian, and one substitute bookmobile librarian. The library is open from 9:00 a. m. to 5:30 p. m. on Tuesday and Thursday, from 1:00 to 5:30 p. m. on Wednesday and Friday, from 9 a. m. to 5 p. m. on Saturday, and 7 to 9 p. m. on Tuesday. Story hours for preschool children are held on Saturday at 10 a. m. and 1 p. m.

Plans are underway for the construction of a one-story, brick building, which will house the library. The building will contain approximately 6,000 square feet of floor space, carpeting, and air conditioning, with the cost estimated at \$100,000. A parking area will be available as well as a loading area for the bookmobile. Construction is expected to begin in August, 1969, with a completion date of early 1970.

Churches

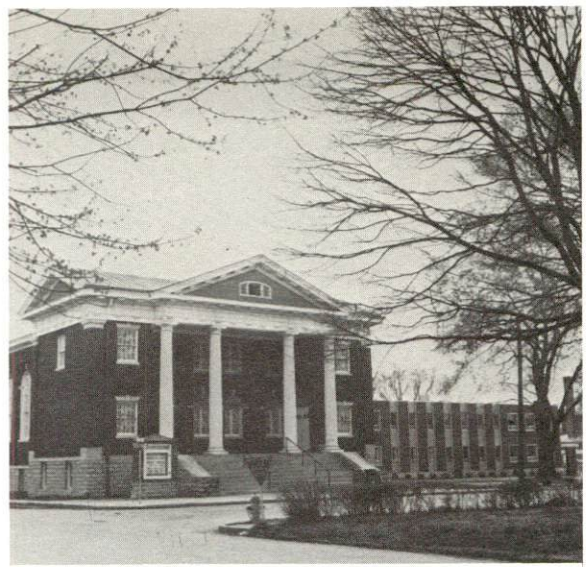
There are fourteen churches in Lebanon representing the following denominations: Baptist, Catholic, Christian, Church of Christ, Jehovah's Witnesses, Methodist, Presbyterian, and Latter Day Saints.

Financial Institutions

	<u>Statement as of December 31, 1968</u>	
<u>Bank</u>	<u>Assets</u>	<u>Deposits</u>
Bank of Loretto, Loretto, Kentucky	\$2,846,404.68	\$2,546,881.59
Citizens National Bank, Lebanon, Kentucky	4,977,951.04	4,388,187.59
Farmers National Bank, Lebanon, Kentucky	6,423,196.77	5,694,716.36
Marion National Bank, Lebanon, Kentucky	5,465,553.36	4,761,365.30
Peoples Bank, Gravel Switch, Kentucky	4,424,858.26	2,226,035.78
<u>Savings & Loan Associations</u>	<u>Assets</u>	<u>Shared Accounts</u>
Marion County Savings & Building Association	\$3,814,590.32	\$3,318,380.10



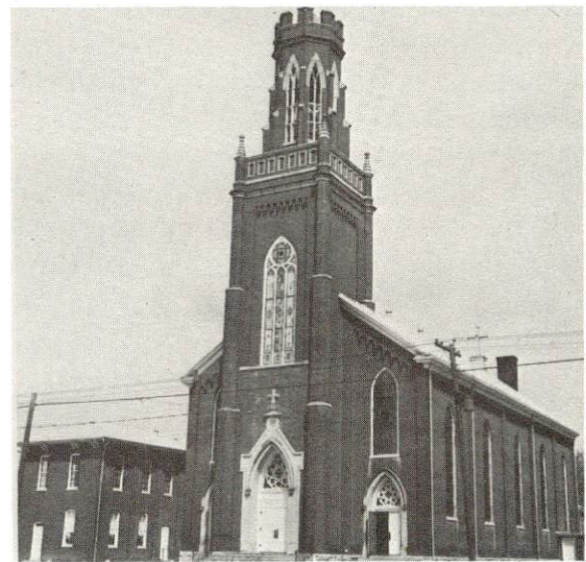
METHODIST CHURCH



FIRST BAPTIST



PRESBYTERIAN CHURCH



ST. AUGUSTINE



CHURCH OF CHRIST

Hotels and Motels

Hollyhill Motel	27 units
Golden Horseshoe Motel	13 units

Clubs and Organizations

Business and Civic: Chamber of Commerce, Junior Chamber of Commerce, Kiwanis, Rotary, Optimist, Medical Society, Dental Society, Red Cross, Welcome Wagon

Fraternal: American Legion, Masons, Knights of Columbus, VFW, Knights of Templar

Women's: VFW Auxiliary, American Legion Auxiliary, Woman's Club, Homemakers, Eastern Star, Business and Professional Women, Daughters of Isabella, Hospital Auxiliary

Youth: Boy Scouts, Girl Scouts, Cub Scouts, Brownies, FFA, FHA, 4-H, FTA, Beta Club, FBLA

Other: Sportsman's Club, Saddle Club, Ministerial Association, Boosters Club

Recreation

Local: Recreational facilities in Lebanon consist of two parks covering an area of 55 acres, four playgrounds, one indoor and one drive-in theater, one 9-hole golf course, two roller skating rinks, one swimming pool, and a civic center.

The city maintains a 28-acre park which is being used by the Boy Scouts and Girl Scouts. This park is lighted and picnic tables are available. This is in addition to Graham Memorial Park, which has a swimming pool and varied facilities including two baseball diamonds, two tennis courts and a basketball court.

Organized recreational activities include Little League, Babe Ruth League, and American Legion League baseball, Little League football, church softball leagues, and swimming team.

Area: Lebanon's location in the famous Bluegrass Region of Central Kentucky places the city in close proximity to an excellent variety of recreational opportunities.

Approximately one hour's driving time to the northwest is Louisville, Kentucky's largest city. Home of Churchill Downs and the Kentucky Derby,

Louisville also offers Miles Park and the Junior Derby, and Louisville Downs and harness racing. Cultural entertainment is provided by the Louisville Orchestra, Kentucky Opera Association, Louisville Civic Ballet Company and Actors, Inc. The Brown Theater is the home of the Louisville Theatrical Association. Louisville's 375-acre Kentucky Fair and Exposition Center is the site of trade shows, ice shows, auto racing, track meets, conventions, nearly continuous year round activity. Intercollegiate athletic competition in football, basketball, and baseball is found at the University of Louisville, while major league sports entertainment is provided by the Louisville Colonels basketball team and the Louisville Colonels baseball team.

Only 60 miles northeast of Lebanon is Lexington, capital of the horse world. Here are located many world famous horse farms, some of which welcome visitors to their grounds. The city boasts two fine race tracks - Keeneland and the Lexington Trotting Track. Dramatic and musical entertainment is provided by the Central Kentucky Philharmonic Orchestra, Central Kentucky Concert and Lecture Series, Guignol Theater, and Centennial Theater - a summer stock company. Outstanding inter-collegiate athletic competition is found at the University of Kentucky.

Further recreational diversity is found in the state parks located in the Lebanon area.

Old Fort Harrod State Park is located in Harrodsburg, 31 miles from Lebanon. "The Legend of Daniel Boone," a drama about early Kentucky life, is performed in the park's amphitheater, from late June to Labor Day.

My Old Kentucky Home State Park, Bardstown, 29 miles from Lebanon, covers a 235-acre area with camping accommodations, gift shop, 9-hole golf course, picnic shelter and playground. "The Stephen Foster Story," an outdoor drama, is presented in the park's amphitheater during the summer months.

Lake Cumberland State Park, Jamestown, 60 miles south of Lebanon, is a resort park on Lake Cumberland. Covering an area of 3,000 acres, facilities include a lodge, cottages, camping facilities, dining room, coffee shop, gift shop, Olympic pool, resort pool, boat and motor rental, fishing, 9-hole golf course, tennis and playground.

The Howardstown Reservoir is being given detailed consideration as an element in an overall plan for the Salt River Basin. This reservoir would be on Rolling Fork in Marion, Larue, and Nelson Counties. The project plan considered would serve the purposes of general recreation and preservation and enhancement of fish and wildlife resources as well as flood control, water supply, and water quality control.

Construction of the Green River Reservoir was initiated in 1964. This Reservoir will be operated primarily for flood control in the upper Green River Watershed. However, in accordance with a long range program, this project will provide for the most beneficial use of reservoir lands, and fish and wildlife resources, and will afford an opportunity for outdoor activities associated with large bodies of water for the residents in the Marion County area.

Community Improvements

Public: New \$2.5 million Central High School under construction - new vocational extension center - new airport - new sewage treatment plant - 7,600 feet of new sewage interceptor lines - new Marion County Water District - new garbage truck - new apartment building - new library building planned.

Business and Industrial: Kentucky Utilities, \$56,000 expansion of facilities - Inter-County RECC, \$50,000 expansion of facilities - Western Kentucky Gas Company, planning to extend its service in the Lebanon area - Bourbon Cooperage Company, expansion of facilities.

HISTORY

Marion County was formed in 1834 as the 84th Kentucky county. Land for the county was taken from Washington County. The county was named for General Francis Marion - a hero of the Revolutionary War.

The Rolling Fork of the Salt River flows across the southern portion of Marion County. Topographically, the county is generally undulating to level. Approximately two-thirds of the land is fertile, while the other third is relatively poor.

Marion County suffered enormously during the Civil War period. Three battles were fought at Lebanon. The people were divided in allegiance, with a majority of them in favor of the North. The emancipation of slaves led to a decrease of the peoples' ardor for the Union cause, since many citizens were accustomed to using slaves on their farms.

Lebanon, named for the cedars in the vicinity, has contributed many famous men to the political arena on both the State and National levels.

Names worthy of remembrance are:

James Proctor Knott - Governor of Kentucky from 1883 to 1887; member of the Constitutional Convention which wrote Kentucky's present Constitution.

A. S. Hill - served in the United States Congress.

Frank Chelf - elected to Congress in 1945 and served continuously for over twenty years.

Historical events of note include:

Branch of the Louisville & Nashville Railroad was built to Lebanon in 1857.

During the Civil War three battles were fought at Lebanon: on September 18, 1861; July 12, 1862; and July 5, 1863.

Marion County in the past has been primarily agricultural but the beginning of a transition to other pursuits is evident. Manufacturing and trade and service industries are becoming increasingly important to the county's economy. Lebanon and Marion County must keep a progressive attitude in order to maintain the rating won from the Kentucky Chamber of Commerce as the "most progressive of all small towns in Kentucky."

The residents of Lebanon are evidencing an interest in the creation of additional industrial jobs.

SOURCES OF INFORMATION

- 1/ U. S. Bureau of the Census, U. S. Census of Population, Kentucky.
- 2/ Lebanon Chamber of Commerce, Inc., Lebanon, Kentucky.
- 3/ Department of Sociology, University of Kentucky, Kentucky County Provisional Population Estimates 1969, Kentucky.
- 4/ Kentucky Department of Commerce, 1969 Kentucky Directory of Manufacturers.
- 5/ Kentucky Department of Economic Security, Division of Research and Statistics.
- 6/ Kentucky Department of Economic Security, Division of Employment Service.
- 7/ Kentucky Department of Economic Security, Division of Research and Statistics.
- 8/ Kentucky Department of Commerce, Kentucky's Labor Supply Estimates, 1968.
- 9/ Office of Development Services and Business Research, University of Kentucky, Lexington, Kentucky.
- 10/ Kentucky Department of Education, Kentucky School Directory, 1968-69.
- 11/ Louisville & Nashville Railroad, Louisville, Kentucky.
- 12/ Bestway Express, Inc., Nashville, Tennessee.
- 13/ Louisville & Nashville Railroad, Louisville, Kentucky.
- 14/ Kentucky Department of Revenue, Kentucky Property Tax Rates, 1968.