

1970

Industrial Resources: McCracken County - Paducah

Kentucky Library Research Collections
Western Kentucky University, spcol@wku.edu

Follow this and additional works at: https://digitalcommons.wku.edu/mccracken_cty



Part of the [Business Administration, Management, and Operations Commons](#), [Growth and Development Commons](#), and the [Infrastructure Commons](#)

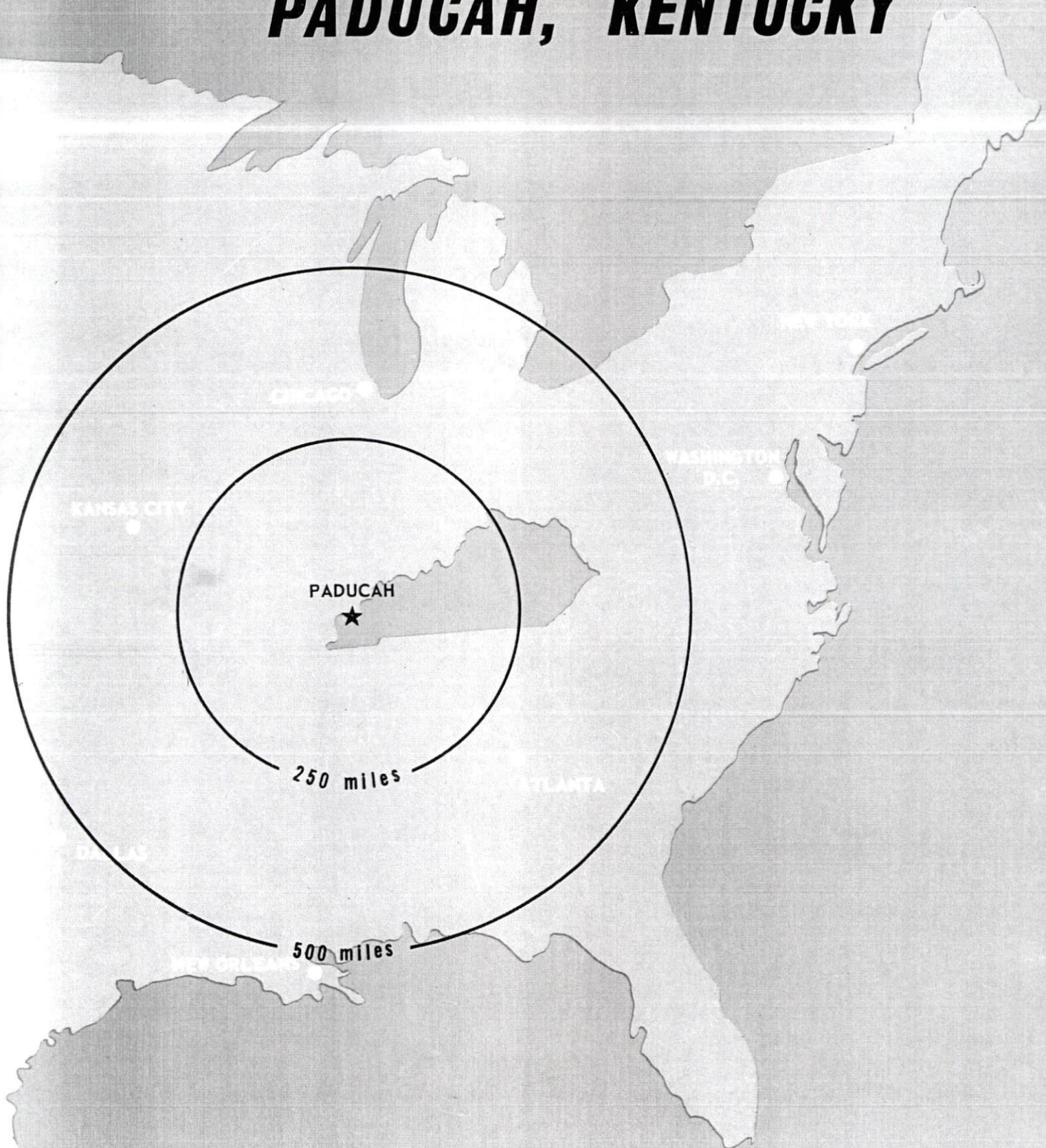
Recommended Citation

Kentucky Library Research Collections, "Industrial Resources: McCracken County - Paducah" (1970). *McCracken County*. Paper 14.
https://digitalcommons.wku.edu/mccracken_cty/14

This Report is brought to you for free and open access by TopSCHOLAR®. It has been accepted for inclusion in McCracken County by an authorized administrator of TopSCHOLAR®. For more information, please contact topscholar@wku.edu.

INDUSTRIAL RESOURCES

PADUCAH, KENTUCKY



PADUCAH INDUSTRIAL SITES

1970

For further information contact the Greater Paducah Chamber of Commerce, P. O. Box 810, Paducah, Kentucky, or N. C. Kieffer, Jr., Director of Industrial Development, Louisville & Nashville Railroad Company, Louisville, Kentucky, or the Kentucky Department of Commerce, Frankfort, Kentucky.

SITE # 1: ACREAGE AND TOPOGRAPHY: 93 acres of level land
LOCATION: On Lydon Road just off Kentucky 1954,
4 miles south of city
HIGHWAY ACCESS: Kentucky 450 or Kentucky 1954
RAILROADS: Louisville & Nashville Railroad, adjacent
to east side of site
WATER: Paducah Water Works
SIZE LINE: 8-inch, 1 mile distant
GAS: Western Kentucky Gas Company
SIZE LINE: 2-inch, 1 mile distant
ELECTRICITY: Paducah Power System
SEWERAGE: Woodlawn Water District, 8-inch, three-fourth
of a mile distant
OWNERSHIP: Louisville & Nashville Railroad

SITE # 2: ACREAGE AND TOPOGRAPHY: 260 acres of level land
LOCATION: 3 miles south of city
HIGHWAY ACCESS: No access road
RAILROADS: Louisville & Nashville Railroad traverses
site
WATER: Paducah Water Works
SIZE LINE: 8-inch, one-half mile distant
GAS: Western Kentucky Gas Company
SIZE LINE: 2-inch line, one-half mile distant
ELECTRICITY: Paducah Power System
SEWERAGE: Woodlawn Water District, 8-inch main
one-half mile from site
OWNERSHIP: Louisville & Nashville Railroad

SITE # 3: ACREAGE AND TOPOGRAPHY: 80.89 acres of level land
LOCATION: 3 miles south of city on Kentucky Highway
1954
HIGHWAY ACCESS: Fronts on Kentucky Highway 1954
RAILROADS: Louisville & Nashville Railroad adjacent
to northeast side of site
WATER: Paducah Water Works
SIZE LINE: 10-inch adjacent to site
GAS: Western Kentucky Gas Company
SIZE LINE: 2-inch, one-half mile distant
ELECTRICITY: Paducah Power System
SEWERAGE: Woodlawn Water District, 8-and 12-inch
mains adjacent to site
OWNERSHIP: Louisville & Nashville Railroad

SITE # 4: ACREAGE AND TOPOGRAPHY: 99.66 acres of level land
LOCATION: 3 miles south of city on Kentucky Highway 1954
HIGHWAY ACCESS: Kentucky Highway 1954
RAILROADS: Louisville & Nashville Railroad adjacent
to northeast side of site
WATER: Paducah Water Works
SIZE LINE: 10-inch adjacent to site
GAS: Western Kentucky Gas Company
SIZE LINE: 2-inch, one-half mile distant
ELECTRICITY: Paducah Power System
SEWERAGE: Woodlawn Water District, 12-inch main
adjacent to site
OWNERSHIP: Louisville & Nashville Railroad

SITE # 5: ACREAGE AND TOPOGRAPHY: 20.6 acres, clear and level
LOCATION: Kentucky Highway 994 and Berger Road
HIGHWAY ACCESS: U. S. 60, 62, 68
RAILROAD: Paducah and Illinois Railroad
ELECTRICITY: Paducah Power System
WATER: Paducah Water Works
GAS: Western Kentucky Gas Company
OPTIONED BY: Greater Paducah Industrial Development Association

SITE # 6: ACREAGE AND TOPOGRAPHY: 21 acres, clear and level
LOCATION: Kentucky Highway 994 and Berger Road
HIGHWAY ACCESS: U. S. 60, 62, 68
RAILROAD: Paducah and Illinois Railroad
ELECTRICITY: Paducah Power System
WATER: Paducah Water Works
GAS: Western Kentucky Gas Company
OWNED BY: Illinois Central Railroad

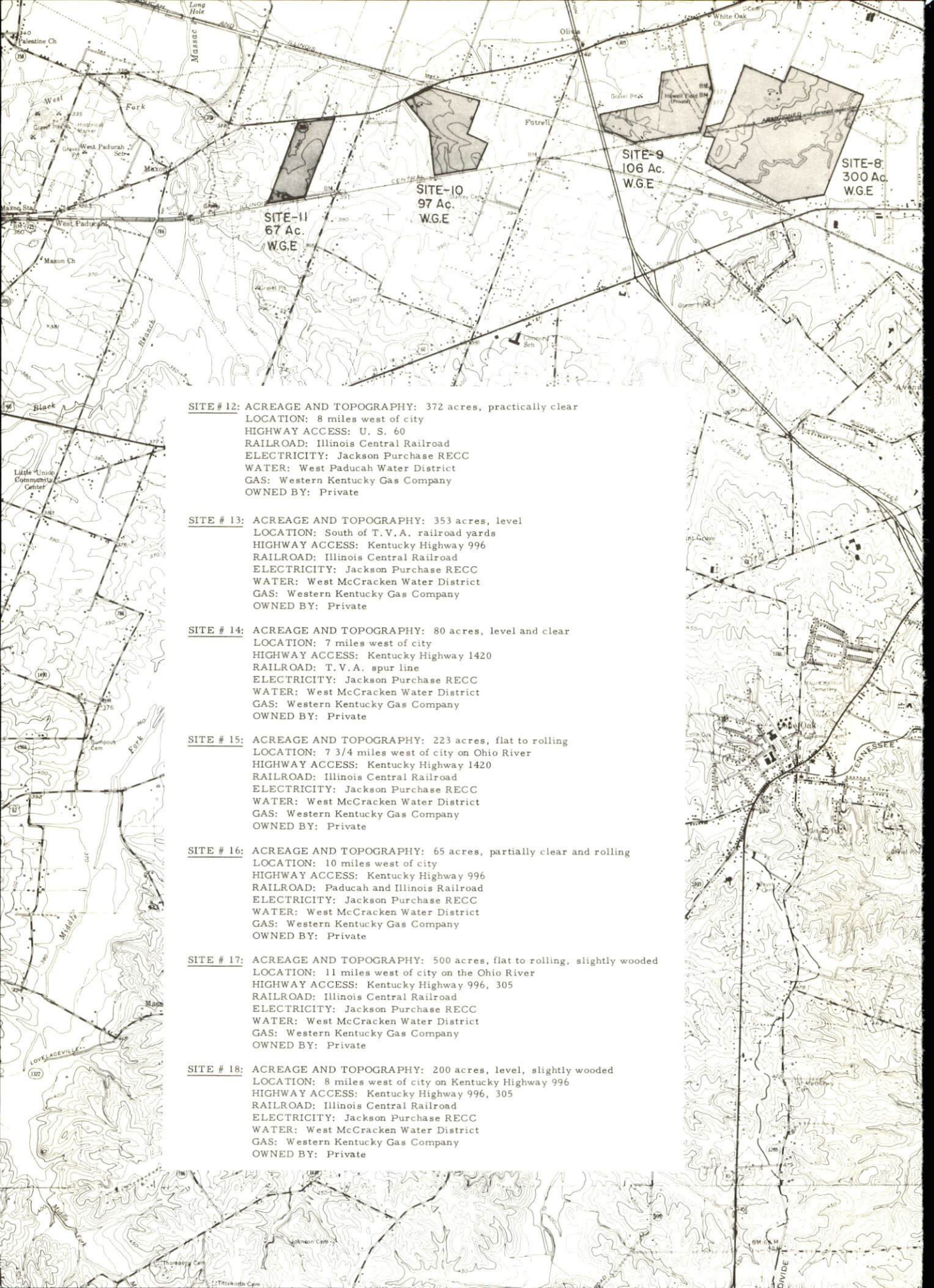
SITE # 7: ACREAGE AND TOPOGRAPHY: 57 acres, clear and level
LOCATION: Kentucky Highway 358, west of city
HIGHWAY ACCESS: Kentucky Highway 358
RAILROAD: None
ELECTRICITY: Paducah Power System
WATER: Paducah Water Works
GAS: Western Kentucky Gas Company
OWNED BY: Private

SITE # 8: ACREAGE AND TOPOGRAPHY: 300 acres, clear and level
LOCATION: Kentucky Highway 353, west of city
HIGHWAY ACCESS: U. S. 60
RAILROAD: Paducah and Illinois Railroad
ELECTRICITY: T. V. A.
WATER: Paducah Water Works
GAS: Western Kentucky Gas Company
OWNED BY: Private

SITE # 9: ACREAGE AND TOPOGRAPHY: 106 acres, clear and level
LOCATION: West of city on the Coleman Road
HIGHWAY ACCESS: Kentucky Highway 358
RAILROAD: Paducah and Illinois Railroad
ELECTRICITY: Paducah Power System
WATER: Paducah Water Works
GAS: Western Kentucky Gas Company
OWNED BY: Greater Paducah Industrial Development Association

SITE # 10: ACREAGE AND TOPOGRAPHY: 97 acres, level
LOCATION: 4 1/2 miles west of city
HIGHWAY ACCESS: Kentucky Highway 358, U. S. 60
RAILROAD: Paducah and Illinois Railroad
ELECTRICITY: T. V. A.
WATER: Paducah Water Works
GAS: Western Kentucky Gas Company
OWNED BY: Private

SITE # 11: ACREAGE AND TOPOGRAPHY: 67 acres, clear
LOCATION: 6 miles west of city
HIGHWAY ACCESS: Kentucky Highway 358, U. S. 60
RAILROAD: 200 yards from Paducah and Illinois Railroad
ELECTRICITY: Kentucky Utilities Company
WATER: Paducah Water Works
GAS: Western Kentucky Gas Company
OWNED BY: Private



SITE # 12: ACREAGE AND TOPOGRAPHY: 372 acres, practically clear
LOCATION: 8 miles west of city
HIGHWAY ACCESS: U. S. 60
RAILROAD: Illinois Central Railroad
ELECTRICITY: Jackson Purchase RECC
WATER: West Paducah Water District
GAS: Western Kentucky Gas Company
OWNED BY: Private

SITE # 13: ACREAGE AND TOPOGRAPHY: 353 acres, level
LOCATION: South of T. V. A. railroad yards
HIGHWAY ACCESS: Kentucky Highway 996
RAILROAD: Illinois Central Railroad
ELECTRICITY: Jackson Purchase RECC
WATER: West McCracken Water District
GAS: Western Kentucky Gas Company
OWNED BY: Private

SITE # 14: ACREAGE AND TOPOGRAPHY: 80 acres, level and clear
LOCATION: 7 miles west of city
HIGHWAY ACCESS: Kentucky Highway 1420
RAILROAD: T. V. A. spur line
ELECTRICITY: Jackson Purchase RECC
WATER: West McCracken Water District
GAS: Western Kentucky Gas Company
OWNED BY: Private

SITE # 15: ACREAGE AND TOPOGRAPHY: 223 acres, flat to rolling
LOCATION: 7 3/4 miles west of city on Ohio River
HIGHWAY ACCESS: Kentucky Highway 1420
RAILROAD: Illinois Central Railroad
ELECTRICITY: Jackson Purchase RECC
WATER: West McCracken Water District
GAS: Western Kentucky Gas Company
OWNED BY: Private

SITE # 16: ACREAGE AND TOPOGRAPHY: 65 acres, partially clear and rolling
LOCATION: 10 miles west of city
HIGHWAY ACCESS: Kentucky Highway 996
RAILROAD: Paducah and Illinois Railroad
ELECTRICITY: Jackson Purchase RECC
WATER: West McCracken Water District
GAS: Western Kentucky Gas Company
OWNED BY: Private

SITE # 17: ACREAGE AND TOPOGRAPHY: 500 acres, flat to rolling, slightly wooded
LOCATION: 11 miles west of city on the Ohio River
HIGHWAY ACCESS: Kentucky Highway 996, 305
RAILROAD: Illinois Central Railroad
ELECTRICITY: Jackson Purchase RECC
WATER: West McCracken Water District
GAS: Western Kentucky Gas Company
OWNED BY: Private

SITE # 18: ACREAGE AND TOPOGRAPHY: 200 acres, level, slightly wooded
LOCATION: 8 miles west of city on Kentucky Highway 996
HIGHWAY ACCESS: Kentucky Highway 996, 305
RAILROAD: Illinois Central Railroad
ELECTRICITY: Jackson Purchase RECC
WATER: West McCracken Water District
GAS: Western Kentucky Gas Company
OWNED BY: Private

SITE-7
57Ac.
WGE

SITE-6
21Ac.
WGE

SITE-5
20.6Ac.
WGE

SITE-4
99.66Ac.
WGES

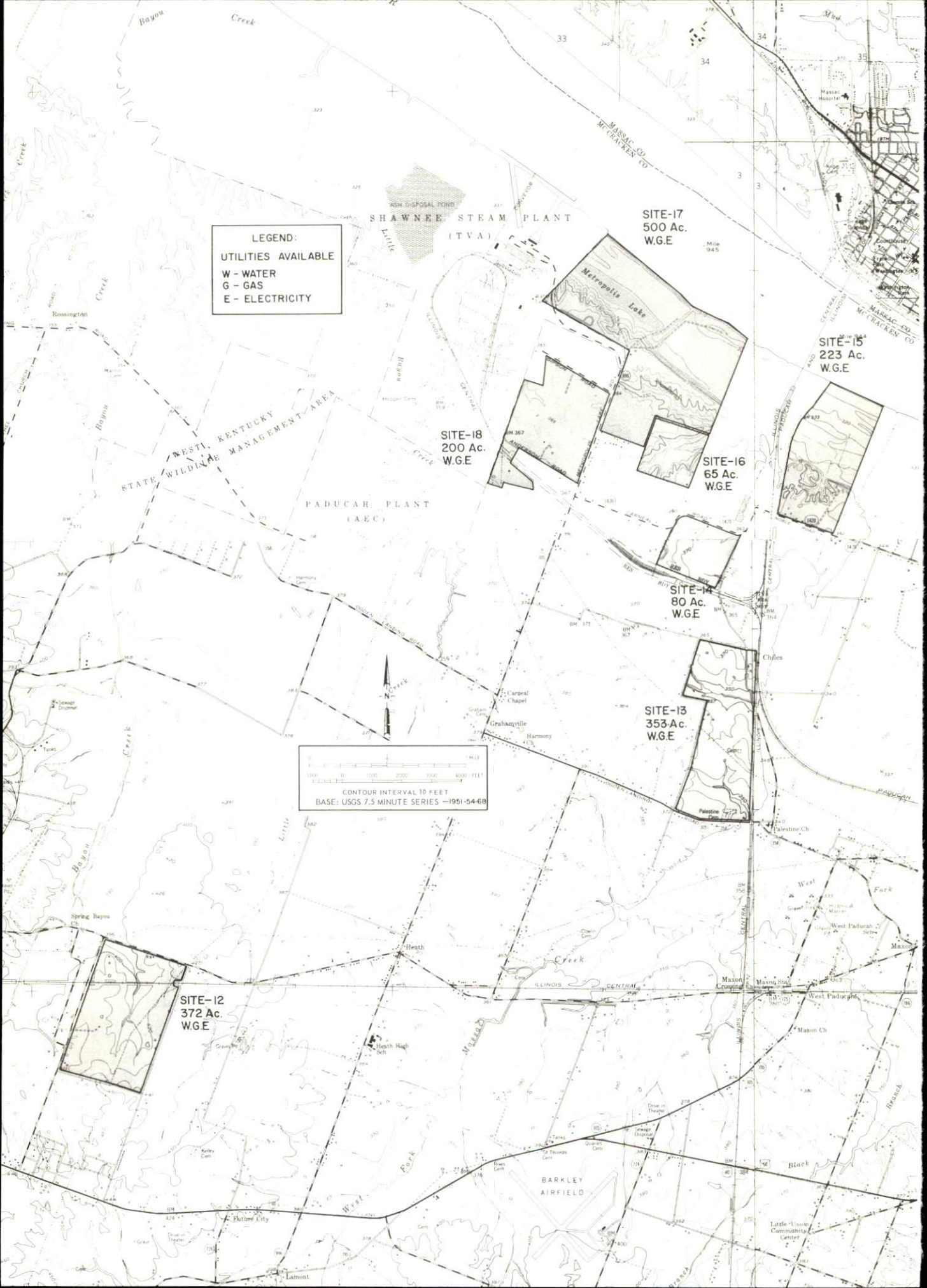
SITE-3
80.89Ac.
WGES

SITE-2
260Ac.
WGES

SITE-1
93Ac.
WGES

LEGEND
UTILITIES AVAILABLE
W - WATER
G - GAS
E - ELECTRICITY
S - SEWERAGE

0 1000 2000 3000 4000 FEET
1 MILE
CONTOUR INTERVAL 10 FEET
BASE: USGS 7.5 MINUTE SERIES - 1951-54
68



LEGEND:
UTILITIES AVAILABLE
W - WATER
G - GAS
E - ELECTRICITY

SHAWNEE STEAM PLANT
(TVA)

SITE-17
500 Ac.
W.G.E

SITE-15
223 Ac.
W.G.E

SITE-16
65 Ac.
W.G.E

SITE-14
80 Ac.
W.G.E

SITE-13
353 Ac.
W.G.E

SITE-18
200 Ac.
W.G.E

SITE-12
372 Ac.
W.G.E

CONTOUR INTERVAL 10 FEET
BASE: USGS 7.5 MINUTE SERIES -1951-54-68

INDUSTRIAL RESOURCES

PADUCAH, KENTUCKY

Prepared by

The Kentucky Department of Commerce

in cooperation with

The Greater Paducah Chamber of Commerce, Inc.

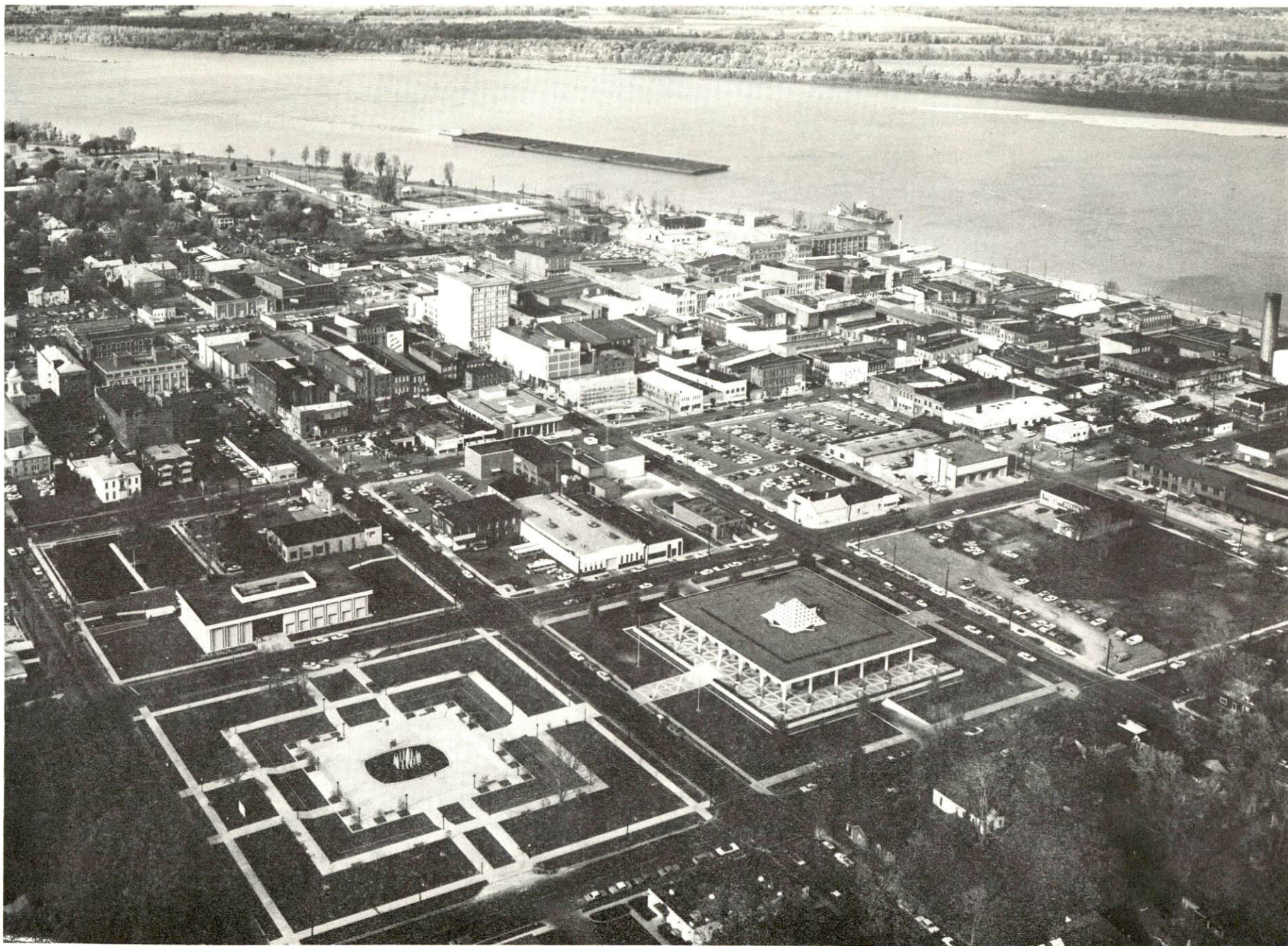
1970

This copy has been prepared by the Kentucky Department of Commerce,
Division of Research and Planning, and the cost of printing paid from
state funds.

TABLE OF CONTENTS

<u>Chapter</u>	<u>Page</u>
INDUSTRIAL SITES	i
PADUCAH, KENTUCKY - A RESOURCE PROFILE	1
THE LABOR MARKET	4
Population Trends	4
General Employment Characteristics, 1969	4
Manufacturing Employment Trends by Industry	4
Major Paducah Manufacturing Firms, Their Products and Employment	5
Wage Rates For Selected Occupations	7
Labor Organizations	7
Current and Future Labor Supply	8
Total Personal Income	9
Per Capita Personal Income.	9
EDUCATION	10
Public Schools	10
Parochial, Private and Special Schools	10
Vocational Schools	11
Colleges and Universities.	11
TRANSPORTATION	13
Rail	13
Truck Service	13
Air.	14
Bus.	14
Taxi	14
Rental Services	14
POWER AND FUEL	17
Electricity	17
Natural Gas	17
WATER AND SEWERAGE.	18
Water	18
Sewerage	20

<u>Chapter</u>	<u>Page</u>
LOCAL GOVERNMENT	21
City	21
County	21
Assessed Value of Property, 1969	21
Local General Property Tax Rates Per \$100 of Assessed Valuation, 1970	21
Planning and Zoning	22
Safety	22
Police	22
Fire	22
Rescue Service	22
Sanitation	23
HEALTH	26
Hospitals	26
Nursing Homes	26
Public Health	26
OTHER LOCAL FACILITIES	27
Communications	27
Library Services	27
Religious Institutions	27
Financial Institutions	28
Hotels and Motels	28
Clubs and Organizations	28
RECREATION	31
Local	31
Area	31
AGRICULTURE - NATURAL RESOURCES - CLIMATE	32
Agriculture	32
Natural Resources	32
Climate	32
HISTORY	33

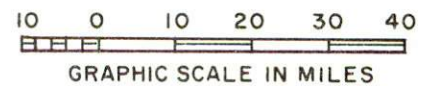
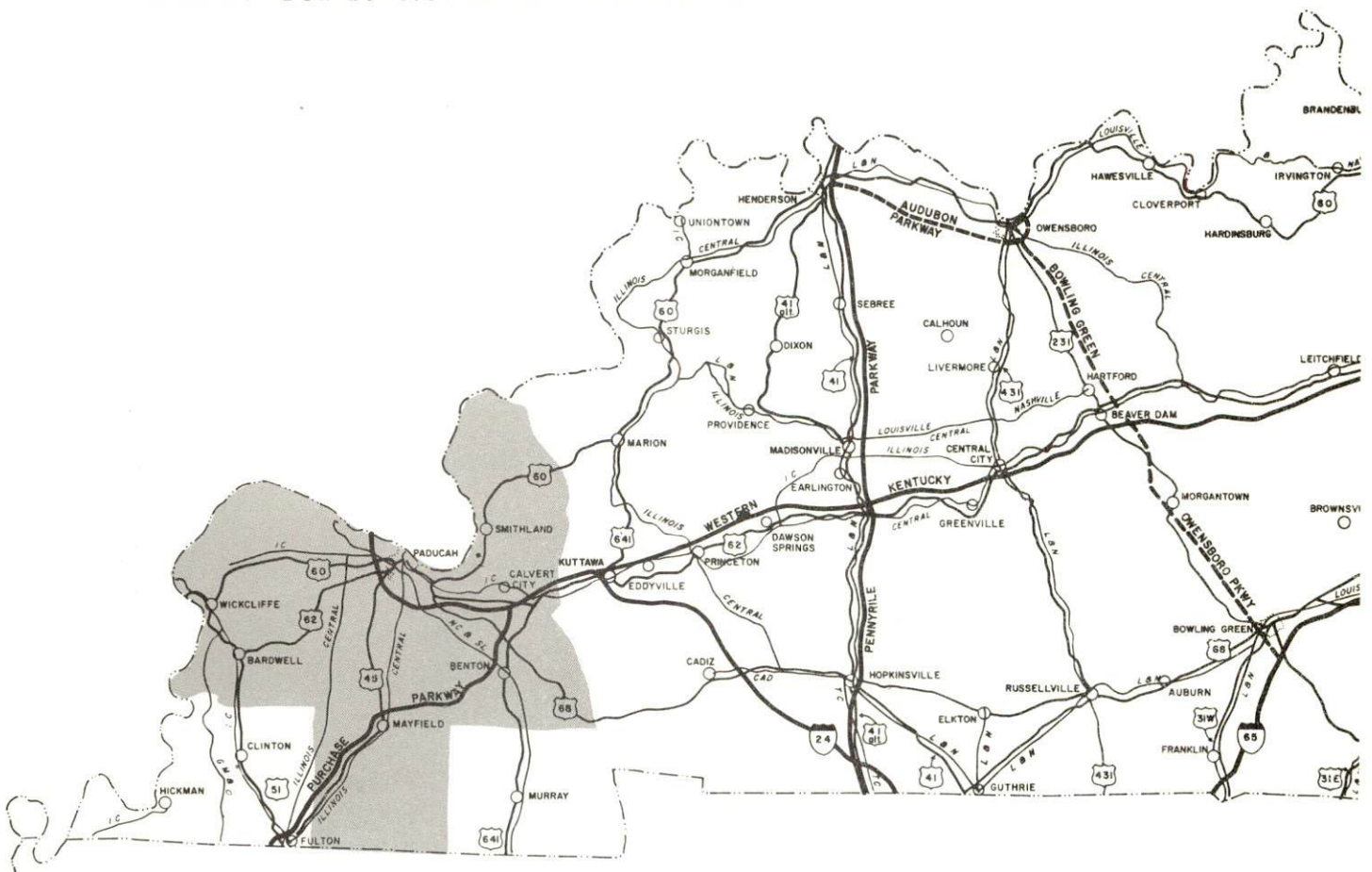


AERIAL VIEW OF PADUCAH, KENTUCKY

(Photo by Courier-Journal & Louisville Times)

PADUCAH LABOR MARKET AREA

*Shaded area denotes labor market area



PADUCAH, KENTUCKY - A RESOURCE PROFILE

Location

Paducah, the county seat of McCracken County, is located in western Kentucky at the confluence of the Tennessee and Chio Rivers and near the point where the Cumberland River flows into the Chio. This location places Paducah at the hub of the inland waterways system. Paducah is 216 miles west of Louisville, 322 miles northwest of Knoxville, 148 miles northwest of Nashville, Tennessee, 327 miles southwest of Cincinnati, Ohio, and 173 miles southeast of St. Louis, Missouri.

The Economic Framework

Total employment in McCracken County averaged 23,200 in 1969 with manufacturing providing 5,300 of these jobs, trade and services 8,390, and government 3,000 jobs. Major industrial products are loudspeakers, shoes, radiators and oil coolers, river barges, and U-235 for U. S. Government. The Illinois Central Railroad employs over 1,000 workers in its diesel locomotive repair shop.

Per capita income in the county in 1968 was \$2,889. Between 1959 and 1968, per capita personal income in the county increased 60 percent.

The Paducah labor market area includes McCracken County, the five adjoining Kentucky counties, and the five adjoining southern Illinois counties. In 1969, employment in the Kentucky portion of the labor market area totaled 48,200, including 4,000 in agriculture, 12,645 in trade and services, and 13,160 in manufacturing. In the Kentucky area, industrial employment has increased since 1959 with sharpest gains in primary metals, paper, printing and publishing, clay, food and kindred products, and chemical industries.

Resources for Growth

There is a current estimated labor supply of 3,680 men and 3,200 women available for industrial jobs in the Kentucky portion of the labor market area. This current labor supply is supplemented by the number of men and women in the adjoining Illinois counties who are available for industrial jobs. In addition, 6,355 young men and 6,015 young women will become 18 years of age by 1976 and potentially available for work.

The local transportation capability is excellent. Four railroads provide full services to the county. U.S. Highways 60, 68, 45, and 62 serve the county. The Western Kentucky Parkway is 35 miles away and Interstate 24, which will skirt the city of Paducah, is under construction. Water transportation is excellent. Commercial air service is available at Barkley Field, 8 miles west of Paducah.

Electricity is available in large quantity from the Tennessee Valley Authority or Jackson Purchase RECC. Natural gas is available from the Western Kentucky Gas Company. The raw water supply from the Ohio and Tennessee Rivers is more than adequate for continued growth.

Industrial sites - Paducah has 17 sites ranging in size from 10 to 500 acres available for industrial use.

Education is an important growth asset for Paducah. Three school systems operate within the county and educational television is available.

Murray State University is 45 miles from Paducah, with the fully accredited 2-year Paducah Community College located in Paducah.

There are two area vocational schools in Paducah - Tilghman Area Vocational School, which offers 14 different courses, and West Kentucky Area Vocational School, which offers 13 different courses.

Community Programs For Improvement

In 1968, Paducah was designated an All-Kentucky City. The award was the result of a strong program of successful community improvements led by extensive urban renewal.

The city and county are actively continuing their programs for community improvement. Projects which will be beneficial to the community include a new \$1,000,000 federal post office, a \$6,500,000 addition to one hospital and a new \$17,000,000 hospital, a new boat dock, a new north-south direct route through town, repavement of all city streets, the four-laning of U.S. 45 to Mayfield and parts of U.S. Highways 60, 62, and 68, a new shopping center, a new 300-acre county park, 80 additional parking spaces for the city, a new 18-hole country club golf course, a new tri-level civic plaza, additional 60-acre development to the present 62-acre Tyler Industrial Park, 500 low-rent housing units under the neighborhood development plan, upgrading of 550 dwellings by the Oak Lawn improvement league, the establishment of the Alben Barkley Museum, a new County Board of Education Center, a new water treatment plant which will eventually have a 20,000,000-gallon capacity, completion of a new sewage lift station, a new control tower for Barkley Field, and completed construction of I-24.

Recreation, Entertainment and Livability

Paducah and the surrounding area offer unlimited recreational opportunities. Year round, full-time supervised recreational programs are provided for all ages in Paducah. Seven public parks cover 300 acres in the city.

Kentucky Dam Village State Resort Park, 22 miles distant, is a 1,200-acre park with a village inn, lake cottages and camping facilities, pool, 18-hole golf course, bridle paths, playground, tennis court, air strip, and Kentucky Lake for boating and fishing.

Kenlake State Resort Park, 40 miles distant, is an 1,800-acre resort park with lodge, cottages, and camping facilities. The park facilities include fishing, boating, pool and lake swimming, horse riding, golfing, tennis, and shuffleboard.

Lake Barkley State Park, 55 miles distant, is a 3,000-acre resort park. The facilities include a lodge and cottages, and camping sites. Recreational facilities include fishing, boating, swimming and golfing.

Land Between the Lakes National Recreation Area, 20 miles distant, is 170,000 acres of wooded ridge formed into a peninsula by Kentucky and Barkley Lakes for recreation, conservation, and education. The facilities include fishing, water sports, hunting and camping.

Columbus-Belmont Battlefield State Park, 42 miles distant, has camping accommodations only. The facilities include miniature golf, hiking trails, picnic area and shelter, and playground.

THE LABOR MARKET

POPULATION TRENDS ^{1/}

Area	Population			Percent Change	
	1970	1960	1950	1960-70	1950-60
Paducah	33,618	34,479	32,828	- 2.5	+ 5.0
Labor Market Area	129,545	124,991	115,823	+ 3.6	+ 7.9
McCracken County	58,571	57,306	49,137	+ 2.2	+16.6
Ballard County	7,969	8,291	8,545	- 3.9	- 3.0
Carlisle County	5,230	5,608	6,206	- 6.7	- 9.6
Graves County	30,745	30,021	31,364	+ 2.4	- 4.3
Livingston County	7,391	7,029	7,184	+ 5.2	- 2.2
Marshall County	19,639	16,736	13,387	+17.3	+25.0

GENERAL EMPLOYMENT CHARACTERISTICS, 1969 ^{2/}

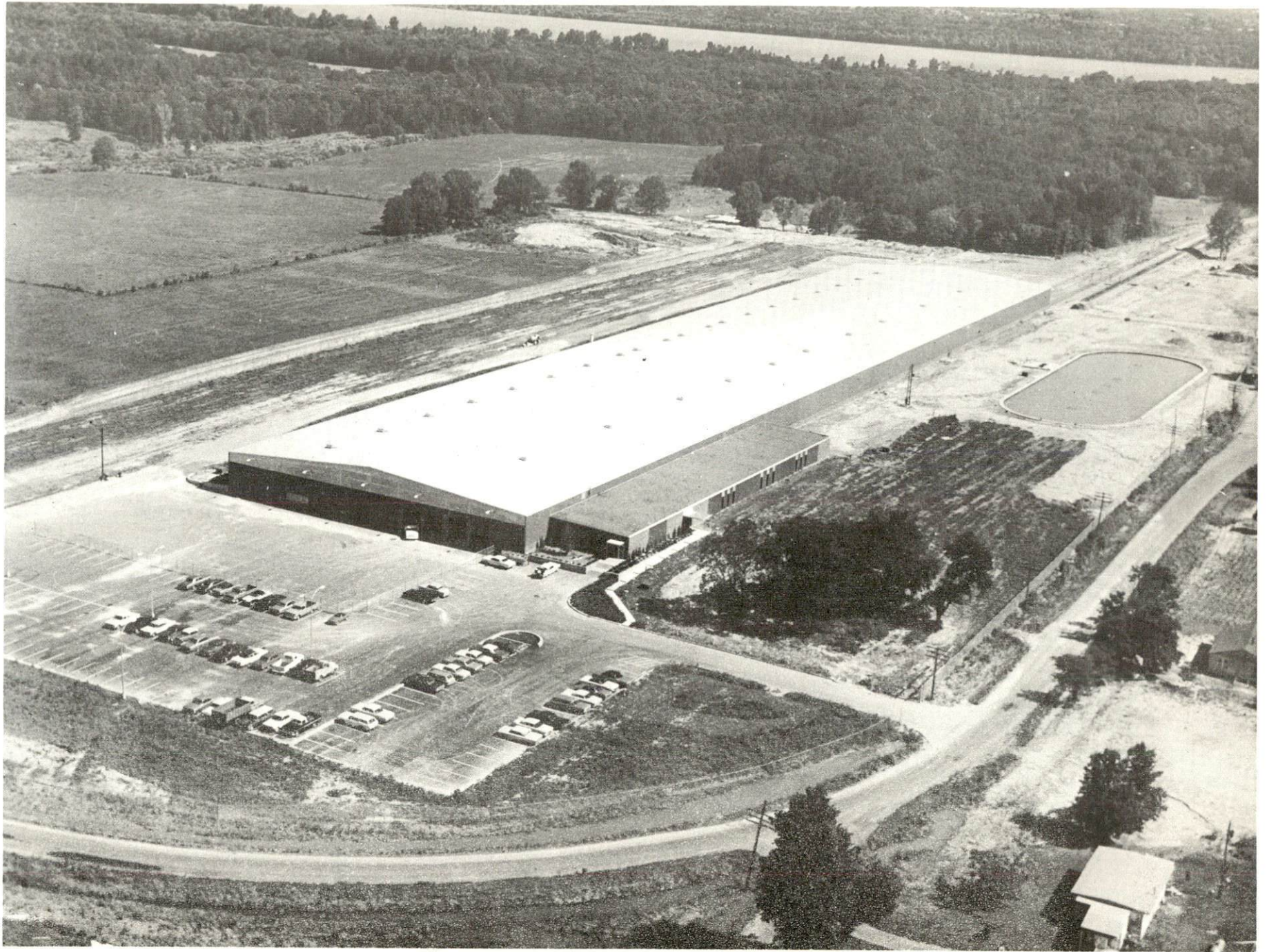
Major Employment Group	Employment	
	McCracken County	Labor Market Area
TOTAL	23,200	48,200
Agricultural	600	4,000
Nonagricultural	22,600	44,200
Manufacturing	5,300	13,158
Trade and Services	8,392	12,647
Government	3,000	6,100
Other	6,108	12,295

MANUFACTURING EMPLOYMENT TRENDS BY INDUSTRY MARCH 1960 AND 1970

Industry	McCracken County			Labor Market Area		
	1970	1960	% Change	1970	1960	% Change
TOTAL	4,794	5,170	- 7.3	12,503	10,748	+ 16.3
Food & kindred products	682	393	+73.5	773	603	+ 28.2
Tobacco	3	17	- 5.9	3	166	- 98.2
Apparel, textiles, leather	864	1,170	-26.2	2,696	3,547	- 24.0
Lumber & furniture	102	69	+47.8	816	273	+198.9
Printing, publishing, paper	248	167	+48.5	482	226	+113.3
Chemicals, petroleum, coal, rubber	1,213	1,701	-28.7	4,615	3,120	+ 47.9
Stone, clay & glass	85	97	-12.4	562	337	+ 66.8
Primary metals	154	0	--	912	511	+ 78.5
Machinery & metal products	1,421	1,556	- 8.7	1,595	1,960	- 18.6
Other	22	0	--	49	5	+880.0

MAJOR PADUCAH MANUFACTURING FIRMS,
THEIR PRODUCTS AND EMPLOYMENT ^{4/}

Firm	Product	Employment		
		Total	Male	Female
Aluma-Kraft Sales & Manufacturing Co.	Aluminum storm products	14	10	4
B B Foods Co.	Breaded frozen onion rings	185	30	155
CTS of Paducah, Inc.	Loudspeakers	600	180	420
Central States Veneers, Inc.	Face veneer	65	57	8
Coca-Cola Bottling Co.	Soft drinks	77	68	9
Colonial Baking Co. of Paducah	Bread	117	113	4
Essex International Corp.	Aluminum wire cable	105	100	5
Federal Materials Co., Inc.	Ready mixed concrete	55	50	5
Gilliam Candy Co., Inc.	Candy	50	25	25
Guy Gray Mfg. Co., Inc.	Plumbing fixtures	22	16	6
International Shoe Co.	Men's and boys' shoes	662	177	485
Metzger Packing Co., Inc.	Meat processing	44	40	4
Midwest Farms	Milk, ice cream mix	74	65	9
Modine Manufacturing Co.	Auto, truck radiators, oil coolers	482	469	13
Normandy Frocks	Women's dresses, uniforms	60	6	54
Paducah Bottling Co.	Soft drinks	68	65	3
Paducah Marine Ways, Inc.	River barges	300	292	8
Paducah Shirt Co., Inc.	Boys' shirts	150	11	139
Paducah Sun-Democrat	Newspaper	120	99	21
Royal Crown Nehi Bottling Co.	Carbonated beverages	18	16	2
Shelton Metrology Laboratory	Precision measuring machinery	35	32	3
Shiva Artist Colors	Professional art colors	20	10	10
Sippi Products, Inc.	Pottery	45	28	17
Southern Textile Machinery Co.	Textile machinery	32	27	5
Sunshine Dairy, Inc.	Milk, ice cream, cottage cheese	23	20	3
Union Carbide Corp.	U-235 for U. S. Government	1189	1116	73
Walker Boat Yard, Inc.	Building and repairing barges, boats	90	87	3
Yopp Seed Co., Inc.	Fertilizer	25	22	3



ESSEX INTERNATIONAL CORP.

WAGE RATES FOR SELECTED OCCUPATIONS
PADUCAH, KENTUCKY ^{5/}

Classification	Wages Per Hour		
	Starting	Maximum	Prevailing
<u>Production Employees</u>			
Assembler	\$2.10	\$3.32	\$2.43
Inspector	2.77	3.46	3.33
Production Laborer	2.07	3.22	2.71
Welder, Arc or Acetylene (Class-A)	2.59	3.22	2.80
<u>Service Employees</u>			
Electrician (Class-A)	\$3.47	\$3.80	\$3.64
Laborer	2.05	2.62	2.45
Machinist	3.07	3.67	3.22
Mechanic, Maintenance	3.32	3.54	3.49
Truck Driver, Industrial (Class-A)	1.95	2.27	2.10
<u>Office Employees</u>			
Bookkeeper	\$2.69	\$3.03	\$2.85
File Clerk	1.87	2.29	1.94
Receptionist	1.86	2.12	1.97
Secretary	2.21	2.46	2.32
Typist	1.88	2.19	2.06

LABOR ORGANIZATIONS

<u>Union</u>	<u>Representing Workers at:</u>
Bakery & Confectionery Workers Union	B B Food Company
United Automobile, Aerospace and Agricultural Implement Workers of America, Local 702	CTS of Paducah, Inc.
Operating Engineers, Local 761	Coca-Cola Bottling Co., Inc.
The International Brotherhood of Teamsters, Chauffeurs, Warehousemen and Helpers of America, Local 236 and Bakery and Confectionery Workers, Local 199	Colonial Baking Co. of Paducah
International Association of Machinists and Aerospace Workers	Essex International Corp.
Hod Carriers Union, Operating Engineers - Teamsters	Federal Materials Co., Inc.
Boot and Shoe Workers	International Shoe Co.
	(Cont'd)

UnionRepresenting Workers at:

Teamsters, Chauffeurs, Warehousemen and Helpers, Local 236	Midwest Farms
United Automobile, Aerospace and Agriculture Implement Workers of America, Local 702	Modine Manufacturing Co.
International Ladies' Garment Workers	Normandy Frocks
International Brotherhood of Boilermakers, Iron, Shipbuilders, Blacksmiths, Forgers and Helpers of America	Paducah Marine Ways, Inc.
Amalgamated Clothing Workers of America	Paducah Shirt Co., Inc.
Paducah Typographical Union, Local 134, and Paducah Printing Pressmen Union, Local 291	Paducah Sun-Democrat
Oil, Chemical and Atomic Workers International Union, Local 3-550	Union Carbide Corp.

CURRENT AND FUTURE LABOR SUPPLY -
PADUCAH LABOR MARKET AREA

County	Current Labor Supply, 1970 ^{6/}			Future Labor Supply by 1976 (Becoming 18 Years of Age) ^{7/}		
	Total	Male	Female	Total	Male	Female
Labor Market Area	6,875	3,679	3,196	12,372	6,355	6,017
McCracken	1,405	838	567	6,001	3,113	2,888
Ballard	532	186	346	744	366	378
Carlisle	606	374	232	468	242	226
Graves	1,665	1,026	639	2,608	1,347	1,261
Livingston	826	323	503	683	343	340
Marshall	1,841	932	909	1,868	944	924

TOTAL PERSONAL INCOME 8/

<u>Area</u>	<u>1968</u>	<u>1959</u>	<u>% Change</u>
McCracken County	\$ 172,951,000	\$ 105,999,000	+63.2
Labor Market Area	351,234,000	202,998,000	+73.0
Kentucky	8,516,000,000	4,655,000,000	+82.9

PER CAPITA PERSONAL INCOME 9/

<u>Area</u>	<u>1968</u>	<u>1959</u>	<u>% Change</u>
McCracken County	\$2,889	\$1,802	+60.3
Labor Market Area	\$1,592 to 3,571	\$870 to 2,187	+83.0 to +63.3
Kentucky	2,645	1,552	+70.4

EDUCATION

Public Schools

	<u>Paducah</u>	<u>McCracken County</u>
Total Enrollment	6,336	6,143
Elementary	3,077	3,020
Middle	1,267	1,667
High School	1,992	1,456
Student-Teacher Ratio	19-1	19-1
Elementary	20-1	21-1
Middle	18-1	19-1
High School	21-1	17-1
State Rating of High School	2 standard 1 comprehensive	1 standard 2 comprehensive
Other Accreditations	The Southern Association of Colleges and Schools	
Percent High School Graduates to College	67.5	63.8
Current Expenditures Per Pupil	\$510.20	\$449.81
Bonded Indebtedness, June 30, 1970	\$1,669,000	\$2,307,000

Parochial, Private and Special Schools

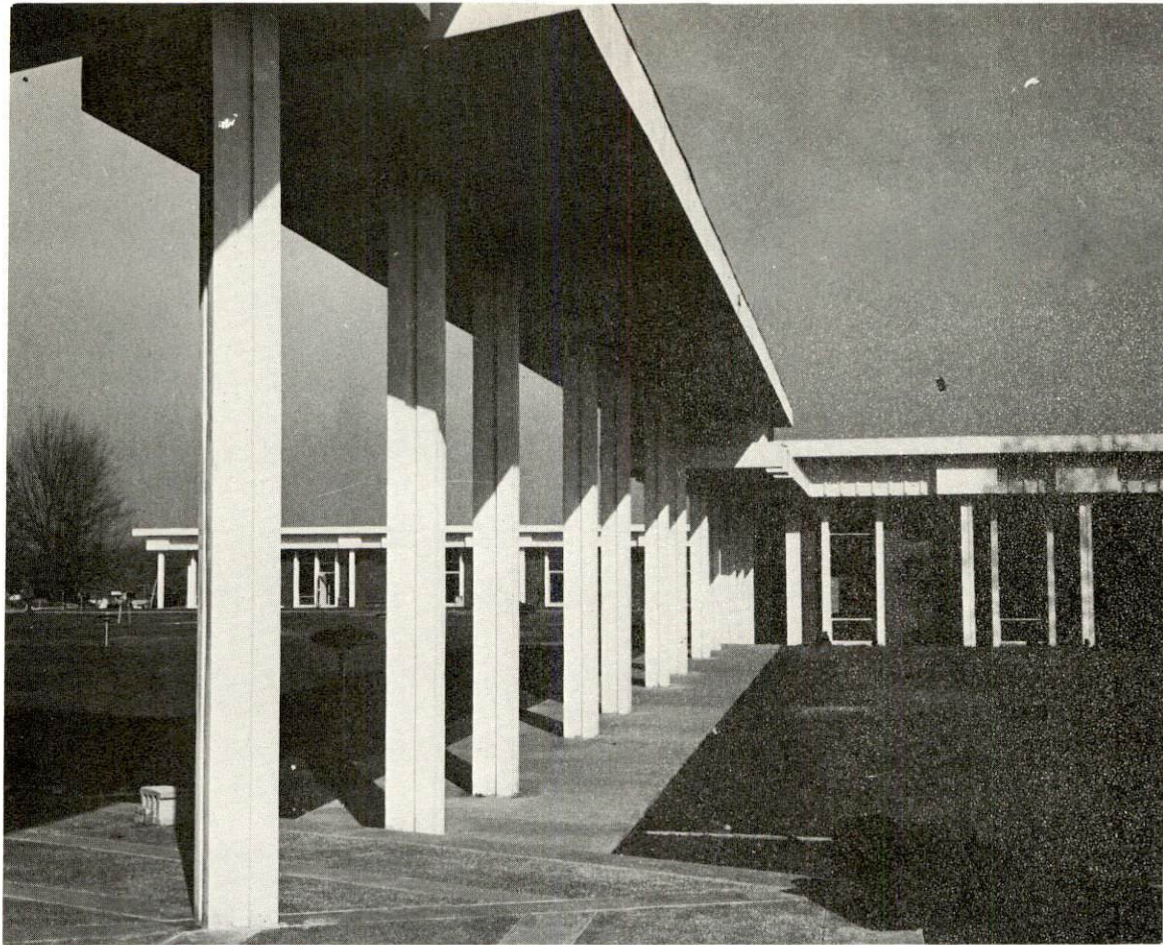
	<u>Parochial</u>
Total Enrollment	1,093
Elementary	703
High School	390
Student-Teacher Ratio	20-1
Elementary	27-1
High School	14-1

Vocational Schools

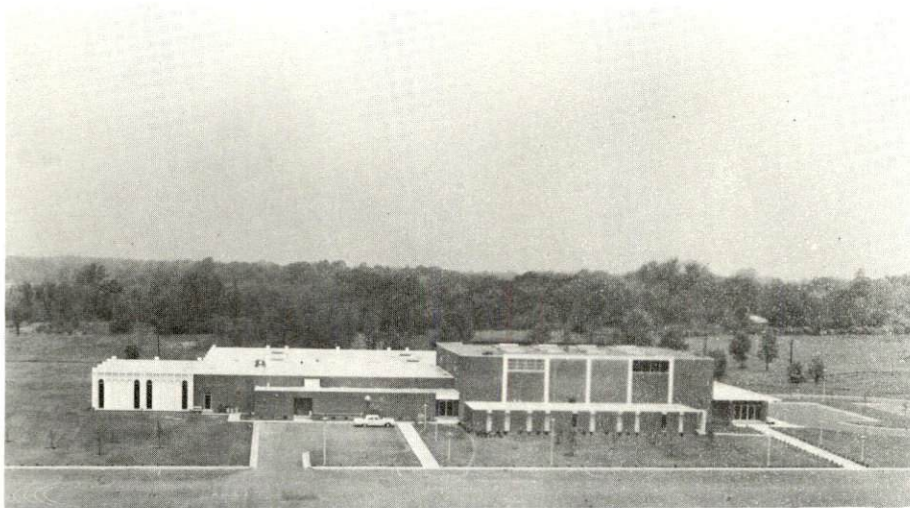
	<u>Nearest Area Schools</u>	
	Tilghman Area Vocational School	West Kentucky Area Vocational School
Location	Paducah	Paducah
Curriculum	Nurses Aide	General Clerical
	Practical Nursing	Secretarial-Steno
	Electronics	Electronics
	(Technology)	(Communications)
	Highway Technology	Auto Body Repair
	Appliance Repair	Auto Mechanics
	Auto Body Repair	Barbering
	Auto Mechanics	Carpentry
	Carpentry	Commercial Foods
	Cosmetology	Cosmetology
	Drafting	Drafting
	Electricity	Electricity
	Machine Shop	Masonry
	Small Gasoline Engine	Tailoring
	Repair	
	Welding	

Colleges and Universities

<u>Name</u>	<u>Area - Within 50 Miles</u>		<u>Highest Degree Conferred</u>
	<u>Location</u>	<u>Enrollment</u>	
Paducah Community College	Paducah	999	Associate
Murray State University	Murray	7,255	Masters



PADUCAH COMMUNITY COLLEGE



ST. MARY HIGH SCHOOL

TRANSPORTATION

Rail

Lines serving Paducah - Illinois Central Railroad; Louisville & Nashville Railroad; Chicago, Burlington and Quincy Railroads; Paducah and Illinois

Services - Freight, switching, siding, REA
Illinois Central - piggyback

RAILWAY TRANSIT TIME FROM PADUCAH, KENTUCKY, TO: 10/

No. of Days		No. of Days	
City	CL	City	CL
Atlanta, Ga.	3	Los Angeles, Calif.	5
Birmingham, Ala.	2	Louisville, Ky.	1
Chicago, Ill.	1	Nashville, Tenn.	2
Cincinnati, Ohio	2	New Orleans, La.	2
Cleveland, Ohio	2	New York, N. Y.	4
Detroit, Mich.	3	Pittsburgh, Pa.	3
Knoxville, Tenn.	2	St. Louis, Mo.	2

Truck Service

<u>Company</u>	<u>Home Office</u>
A & H Truck Line, Inc.	Evansville, Indiana
Bonifield Bros. Truck Line, Inc.	West Frankfort, Illinois
Cooper-Jarrett, Inc.	Orange, New Jersey
Hancock-Trucking, Inc. (Hennis)	Winston-Salem, North Carolina
Harper Truck Service, Inc.	Paducah, Kentucky
Arnold Ligon Truck Line, Inc.	Indianapolis, Indiana
McLean Trucking Company	Winston-Salem, North Carolina
Modern Truck Lines, Inc.	Memphis, Tennessee
Spector Freight System, Inc.	Chicago, Illinois
United Parcel Service	Louisville, Kentucky

HIGHWAY MILES AND TRUCK TRANSIT TIME IN DAYS FROM
PADUCAH, KENTUCKY, TO SELECTED MARKET CENTERS ^{11/}

City	Delivery			City	Delivery		
	Highway Miles	Time LTL	Time TL		Highway Miles	Time LTL	Time TL
Atlanta, Ga.	403	3	2	Los Angeles, Calif.	1,921	7	5
Birmingham, Ala.	326	3	1	Louisville, Ky.	216	2	1
Chicago, Ill.	369	1	1	Nashville, Tenn.	148	3	1
Cincinnati, Ohio	327	3	1	New Orleans, La.	556	4	3
Cleveland, Ohio	565	3	2	New York, N. Y.	965	4	3
Detroit, Mich.	538	3	2	Pittsburgh, Pa.	602	3	3
Knoxville, Tenn.	322	3	2	St. Louis, Mo.	173	1	1

Air

Nearest Commercial

Location: Runways: Length: Traffic Control: Lighting: Services:	Barkley Field 8 miles west of Paducah 2 paved 6,500 feet; 4,000 feet Wind tee Beacon, boundary, obstruction, runway lights and runway end identification lights 80-100 octane, jet fuel, Delta and Ozark Airlines, taxi, limousine, U-Drive-It, storage, major A & E repairs
--	--

Bus

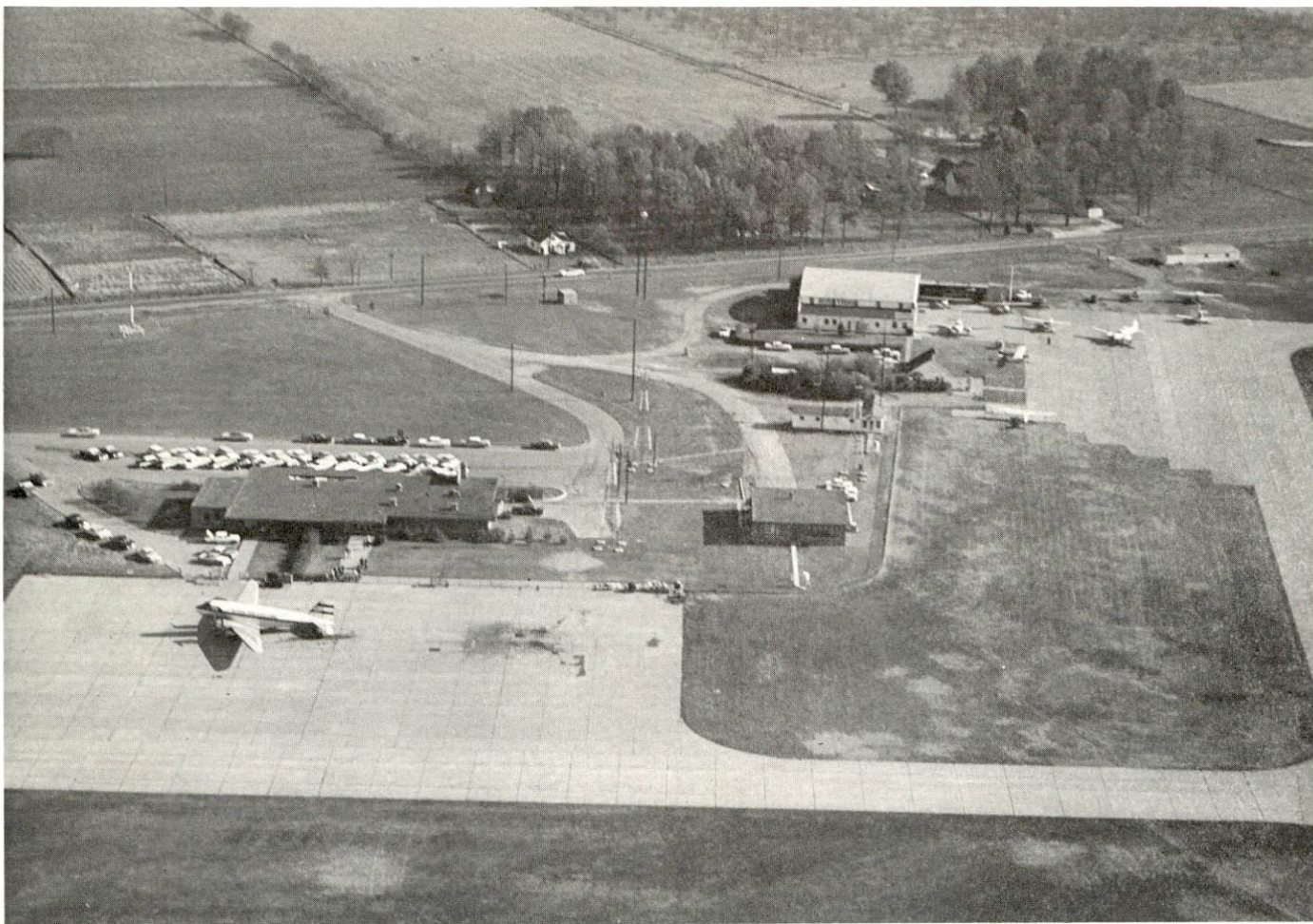
Greyhound Bus Lines, Kentucky Bus Lines, Brooks Bus Lines, Western Kentucky Stages, Inc., Kelley Transportation Company (Intercity), and Connors Bus Lines.

Taxi

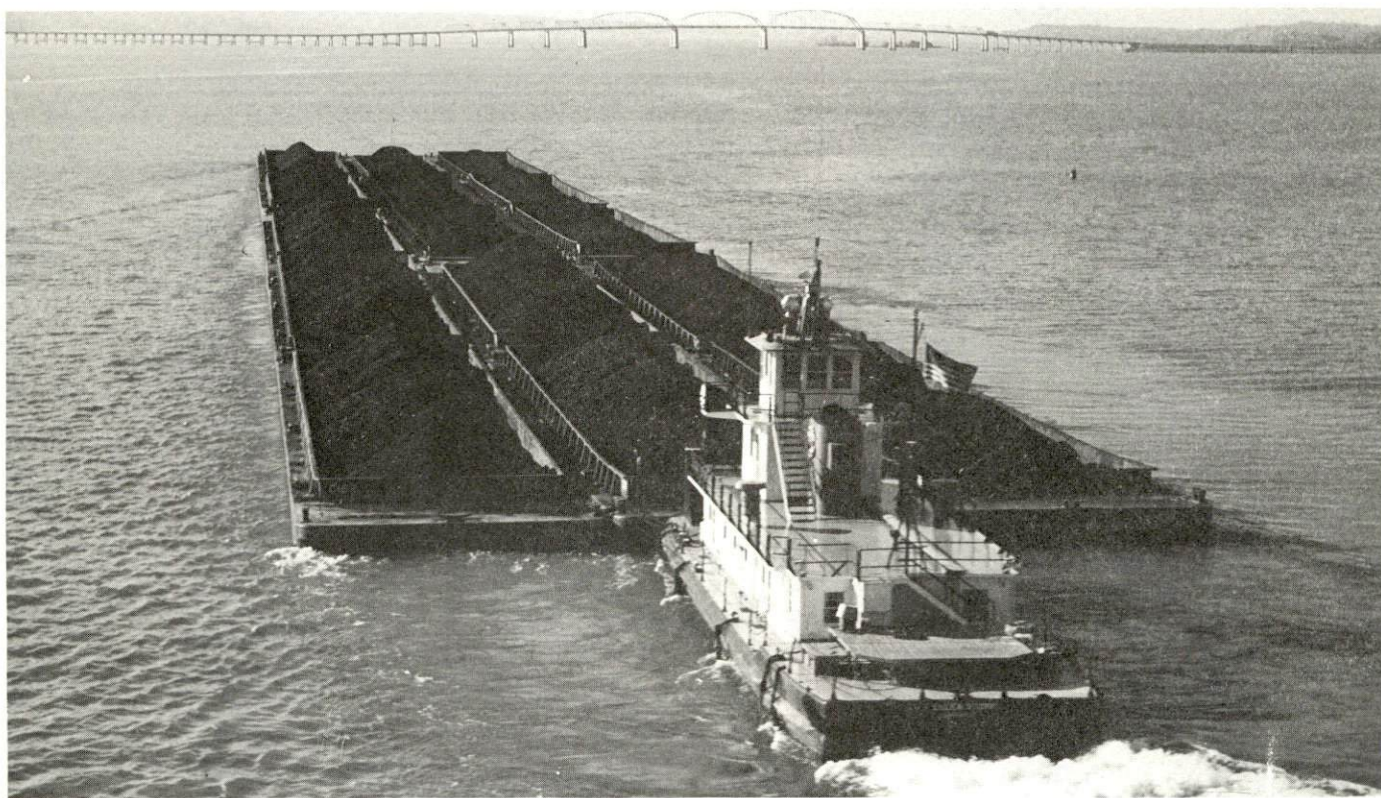
Yellow Cab of Paducah, Inc., 24-hour service

Rental Services

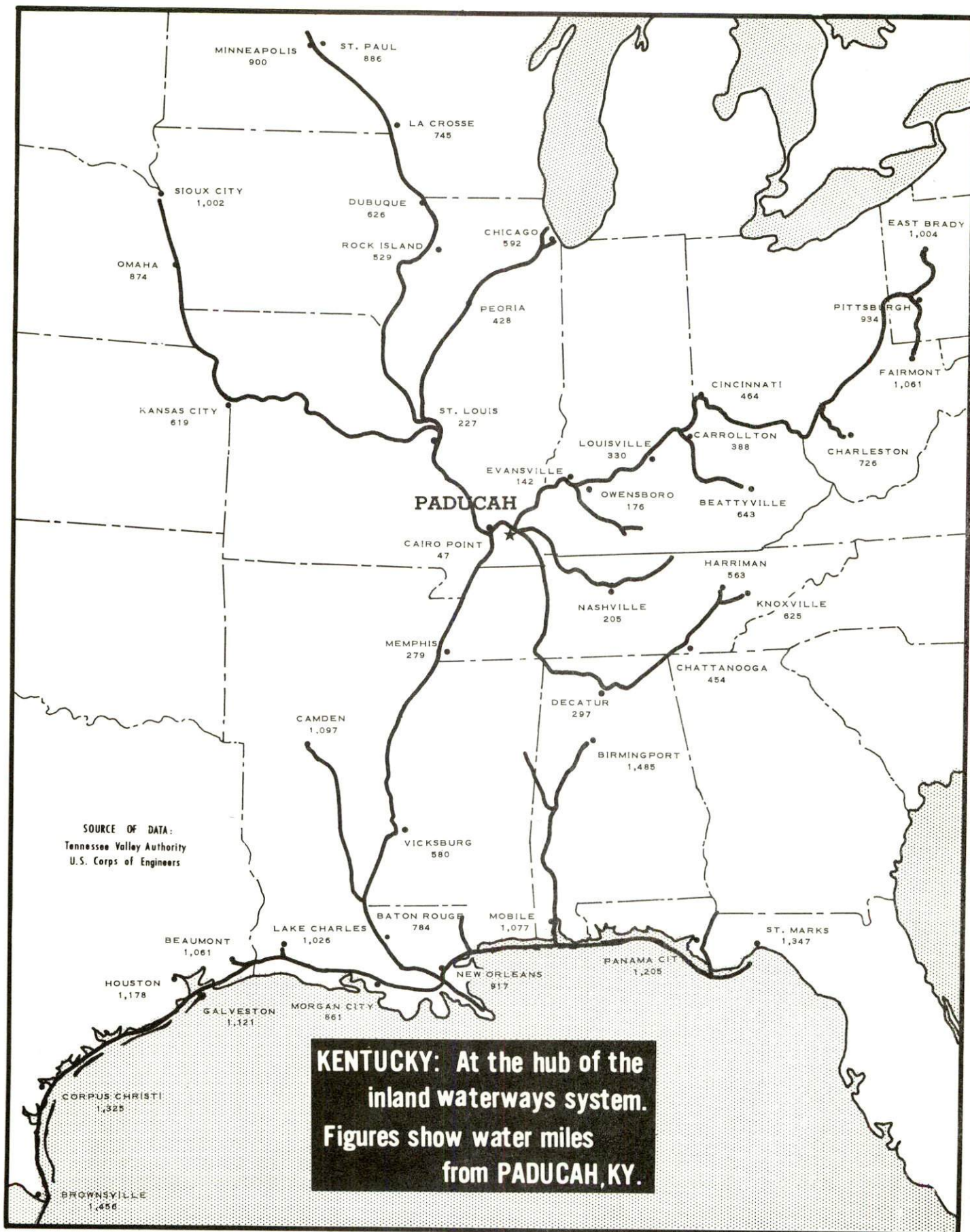
Car and truck rentals



BARKLEY FIELD



TOWBOAT WITH COAL BARGES
OPERATING IN THE PADUCAH AREA



POWER AND FUEL

Electricity

Company serving Paducah - Paducah Power System

Source of power - Tennessee Valley Authority

Total generating capacity - 18,202,090 KW

Industrial rates negotiated by - Paducah Power System, P. O. Box 180,
Paducah, Kentucky 42001

Company serving McCracken County - Jackson Purchase RECC

Source of power - Kentucky Utilities Company

Total generating capacity - 773,000 KW

Industrial rates negotiated by - Jackson Purchase RECC, P.O. Box
1378, Paducah, Kentucky 42001

Natural Gas

Company serving - Western Kentucky Gas Company

Source of supply - Texas Gas Transmission Corporation

Size of transmission lines - 2, 6, and 8 inches

Distribution lines - 2 to 10 inches

Btu content - 1,000

Specific gravity - .60

Distribution pressure - 7 to 50 lbs.

Rates: Industrial rates will be furnished upon request by the Western
Kentucky Gas Company, Paducah, Kentucky 42001.

WATER AND SEWERAGE

Water

Company serving Paducah - Paducah Water Works

Source - Ohio and Tennessee Rivers

Treatment plant capacity - 10,000,000 gpd

Average daily consumption - 6.5 million gallons

Peak daily consumption - 9.4 million gallons

Type treatment - clarification, filtration, taste and odor control,
bacteriological control, fluoridation, and Ph control

Storage capacity - 7,400,000 gallons

Average pressure - 65 psi

Average temperature - 40 - 78° F.

Size mains - 6 to 16 inches

MONTHLY WATER RATES FOR WHOLESALE AND INDUSTRIAL CONSUMERS

Monthly Rates for Water Service Inside City Limits

	<u>Consumption</u>	<u>Charge Per M Gallons</u>
0 to	2,500 gallons per month	\$.80
2,501 to	10,000 gallons per month	.70
10,001 to	100,000 gallons per month	.40
100,001 to	500,000 gallons per month	.30
500,001 to	1,000,000 gallons per month	.26
1,000,001 to	2,000,000 gallons per month	.22
All over	2,000,000 gallons per month	.18

<u>Meter Size</u>	<u>Minimum Consumption</u>	<u>Charge Per Month</u>
5/8-inch	2,500 gallons per month	\$ 2.00
3/4-inch	4,000 gallons per month	3.05
1-inch	7,500 gallons per month	5.50
1 1/2-inch	20,000 gallons per month	9.50
2-inch	40,000 gallons per month	17.50
3-inch	80,000 gallons per month	33.50
4-inch	150,000 gallons per month	56.50
6-inch	300,000 gallons per month	101.50

Bi-Monthly Rates for Water Service Inside City Limits

	<u>Consumption</u>	<u>Charge Per M Gallons</u>
0 to	5,000 gallons per period	\$.80
5,001 to	20,000 gallons per period	.70
20,001 to	200,000 gallons per period	.40
200,001 to	1,000,000 gallons per period	.30
All over	500,000 gallons per month billed on monthly basis.	

Monthly Rates for Water Service Outside City Limits (Exclusive of Surcharge)

	<u>Consumption</u>	<u>Charge Per M Gallons</u>
0 to	10,000 gallons per month	\$.90
10,001 to	100,000 gallons per month	.50
100,001 to	500,000 gallons per month	.40
All over	500,000 gallons per month	.26

	<u>Minimum Consumption</u>	<u>Charge Per Month</u>
5/8-inch	2,500 gallons per month	\$ 2.25
3/4-inch	4,000 gallons per month	3.60
1-inch	7,500 gallons per month	6.75
1 1/2-inch	20,000 gallons per month	14.00
2-inch	40,000 gallons per month	24.00
3-inch	80,000 gallons per month	44.00
4-inch	150,000 gallons per month	74.00
6-inch	300,000 gallons per month	134.00

Standby Fire Protection Charges Outside the City of Paducah

<u>Service Size</u>	<u>Charge Per Month</u>
4-inch	\$ 6.00
6-inch	10.00
8-inch	20.00
10-inch	40.00

Surface water sources - Ohio and Tennessee Rivers
Average discharge - unlimited for industrial use
Expected ground water yield - entire county 500 to 1,000 gpm
Yield along main streams - 500 to 1,000 gpm

Sewerage

Company serving Paducah - City of Paducah Sewer Works

Design capacity - 6,000,000 gpd

Average daily flow - 3,500,000 to 5,000,000 gallons

Treatment - primary

Type treatment - clarifiers, digesters and drying beds

Treated effluent discharged into - Ohio River

Size of sanitary mains - 30 to 102 inches

Size of storm mains - 1 to 102 inches

Rates - 20 percent of water bill, with minimum of \$1.20

LOCAL GOVERNMENT

City

Structure - Mayor - 4-year term; 4 commissioners - 2-year terms

City manager - appointed

Budget 1970 - General Fund \$3, 532, 923 (includes sewer fund); Water Fund \$912, 596

Fees and licenses - payroll tax of 1.25 percent deducted from earnings, occupational tax minimum \$18.75 to \$375; \$10 license fee for passenger cars

County

Structure - County judge - 4-year term; 3 commissioners - 4-year terms

Budget 1969-70 - General Fund \$456, 800; Road Fund \$209, 500

Assessed Value of Property, 1969

<u>Classes of Property*</u>	<u>Paducah</u>	<u>McCracken County</u>
Real Estate	\$131, 722, 890	\$228, 132, 955
Tangibles	40, 035, 720	79, 565, 797
Public Service	23, 919, 794	42, 850, 728

Local General Property Tax Rates Per \$100 of Assessed Valuation, 1970 ^{12/}

<u>Taxing Unit**</u>	<u>Paducah</u>	<u>McCracken County</u>
State	\$.015	\$.015
County	.197	.197
School	.809	.548
City	.642	
Total	\$1.663	\$.760

*Property assessed at 100 percent of fair value.

**Manufacturing machinery, raw materials inventories and goods in process inventories are not subject to local tax. State rate is only \$0.15 per \$100.

Planning and Zoning

Agency - Paducah-McCracken County Planning Commission

Plans completed - Comprehensive Plan, Subdivision Regulations and Zoning Ordinance

Plans in process - Workable Program for Community Improvement and an Area Urban Transportation Study

Codes adopted - Building, Housing, Electrical and Plumbing

Safety

<u>Police</u>	<u>Paducah</u>	<u>McCracken County</u>
Total staff	61	9
Radio-patrol cars	10	6
<u>Fire</u>		(Four Districts)
American Insurance Association Fire Rating	4	
Full-time staff	86	
Volunteers		122
Equipment:		
1,000 gpm pumpers	2	1
750 gpm pumpers	6	3
500 gpm pumpers		4
350 gpm pumpers		1
ladder truck	1	

Rescue Service

Civil Defense Rescue Squad:

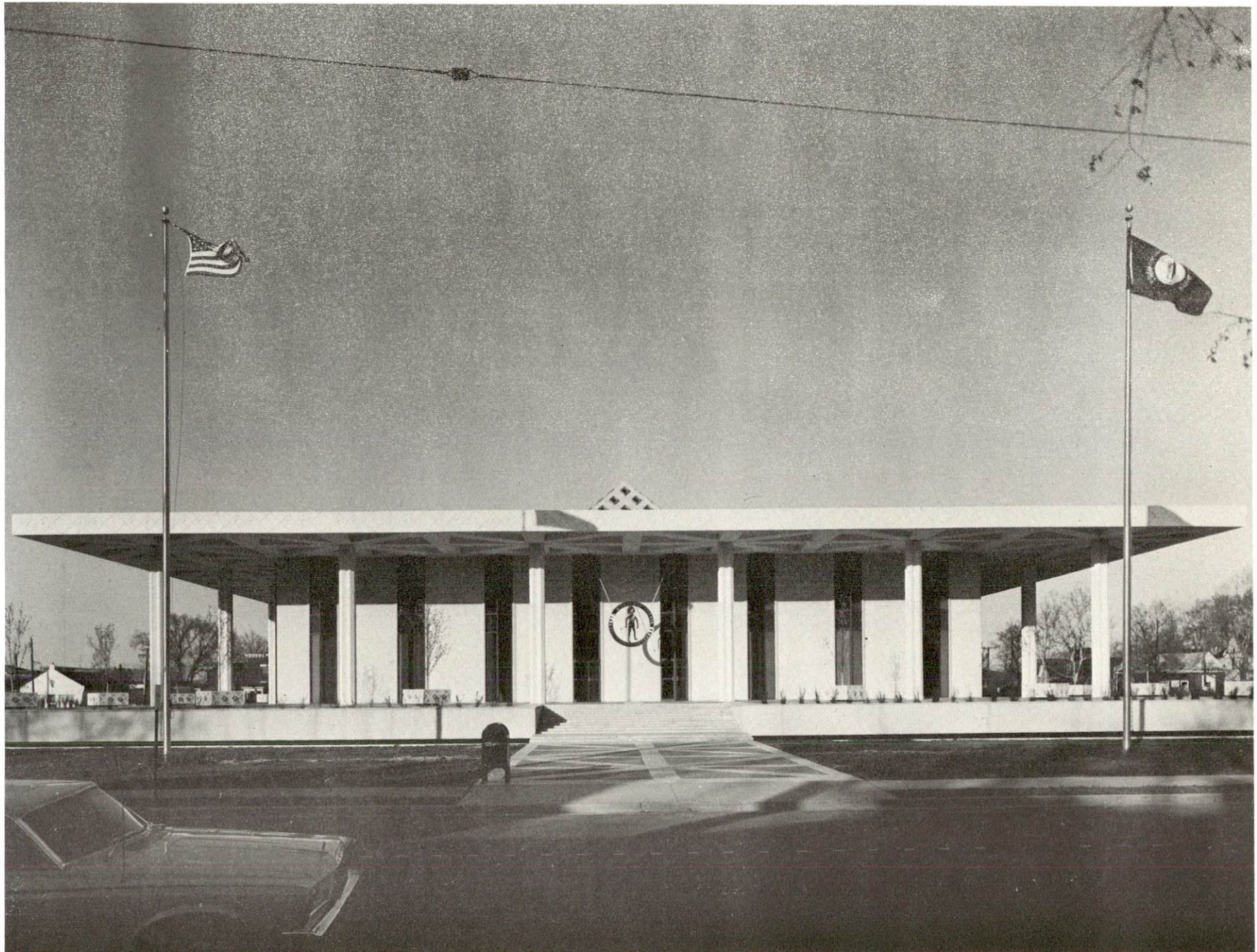
Number of volunteers - 30

Equipment - 5,000-watt and 10,000-watt mobile power generator,
1 water rescue truck, 7 boats and motors, 1 land rescue truck,
1,500-gpm pumper, 1,700-gallon tank truck, 1 jeep, 200-gallon
tank fire truck

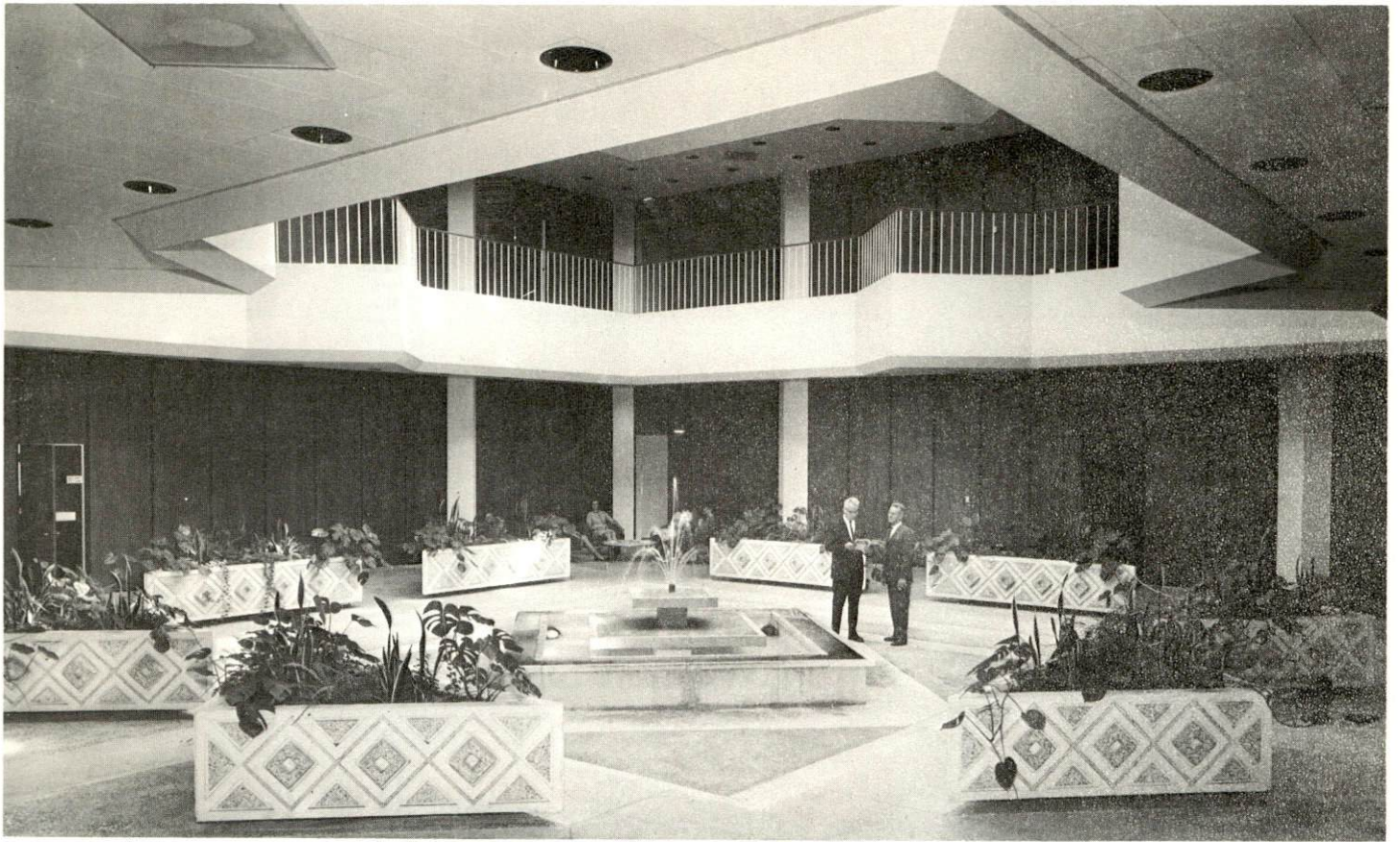
Personnel training - State Fire School, monthly drill, first aid

Sanitation

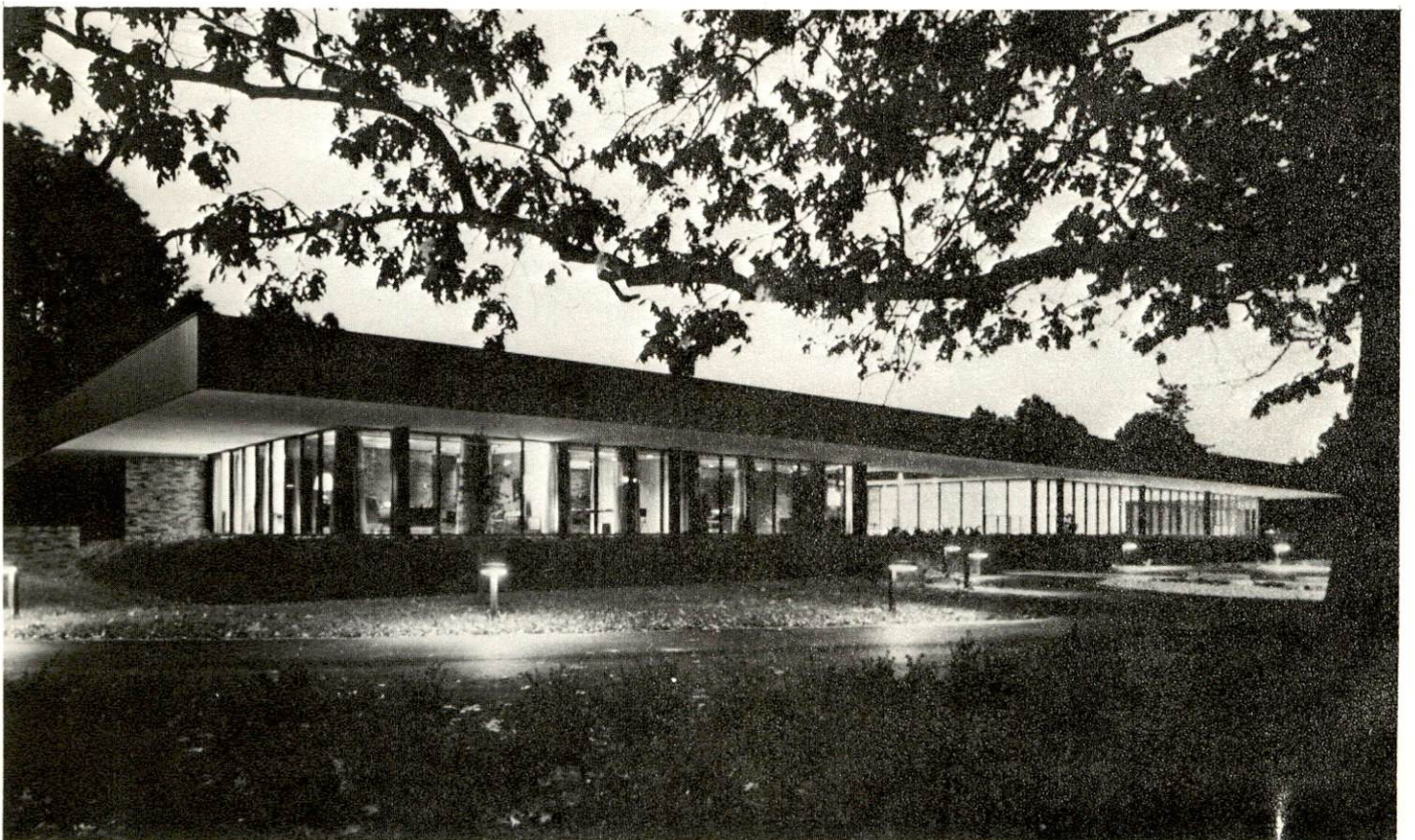
	<u>Paducah</u>	<u>McCracken County</u>
Type service	municipal	private
Cost		
residential	\$1.75 monthly	(Min.) \$2.25 monthly
business	varies with amount	varies
Collection frequency		
residential	weekly	weekly
business	weekly	weekly
Trash pickup	special pickup	weekly
Disposal method	sanitary land fill	two sanitary land fills



PADUCAH CITY HALL



INTERIOR OF PADUCAH CITY HALL



SHELTON METROLOGY LABORATORY

HEALTH

Hospitals

<u>General Hospitals</u>	<u>Location</u>	<u>Beds</u>
Western Baptist Hospital	Paducah	218
Lourdes Hospital	Paducah	141

Western Baptist Hospital facilities - emergency room, X-ray, laboratory, intensive care, delivery room, 8 operating rooms, recovery room, pharmacy, cardiac care, inhalation therapy, physical therapy, cobalt, School of Practical Nursing, EEG Department

Medical staff - 97 doctors, 62 registered nurses, 69 graduate licensed practical nurses

Lourdes Hospital facilities - emergency room, X-ray, laboratory, inhalation therapy, radioisotope, pediatrics, operating room, electrocardiology, psychiatric inpatient service

Medical staff - 90 doctors, 51 registered nurses, 35 graduate licensed practical nurses, 12 licensed practical nurses

Nursing Homes

	<u>Number</u>	<u>Beds</u>
Extended care homes	4	279
Personal care homes	6	153

Public Health

Facility - Paducah-McCracken County Health Department

Staff - 1 administrator, 4 sanitarians, 1 nursing director, 7 registered nurses, 5 clerks, 1 laboratory technician, 1 health officer, 1 maintenance man, 1 nutritionist

Budget 1970-71 - \$184,162

OTHER LOCAL FACILITIES

Communications

Telephone - South Central Bell Telephone Company
Services - standard

Telegraph - Western Union Telegraph Company
Services - standard

Postal - First-Class U.S. Post Office
Mail received - 6 times for surface mail - a.m.
Mail dispatched - 6 times for surface mail - p.m.

Newspapers - Paducah Sun-Democrat - Shopper News
Circulation - 30,764 (Daily) 12,000 (Weekly)
Other papers received from - Chicago, Illinois; New York, N. Y.;
St. Louis, Missouri; Nashville and Memphis, Tennessee; Evansville,
Indiana; and Louisville, Kentucky

Radio - WPAD - AM and FM; WKYX - AM and FM; WDXR

Television - WPSD and WDXR
Reception from - Harrisburg, Illinois; Cape Girardeau, Missouri
Kentucky Educational Television - Murray - Channel 21

Library Services

Public library - Paducah Public Library
Size collection - 41,000 volumes
Circulation, 1969 - 200,000 volumes
Services - 2 bookmobiles, film, records, story hour, art reproductions

Religious Institutions

Number of Churches - 24
Denominations - Adventist, Assembly of God, Baptist, Catholic, Christian,
Christian Science, Church of Christ, Church of God, Church of Living
God, Cumberland Presbyterian, Episcopal, Evangelical Reformed, Full
Gospel, Holiness, Reorganized Church of Jesus Christ of Latter Day
Saints, Lutheran, Methodist, Mormon, Nazarene, Presbyterian,
Pentecostal, Salvation Army, Unitarian and Jehovah's Witnesses
Number of Synagogues - 1; Type congregation - Reformed

Financial Institutions

<u>Bank</u>	<u>Statement as of June 30, 1970</u>	
	<u>Assets</u>	<u>Deposits</u>
Peoples First National Bank & Trust Company	\$38,148,448.29	\$34,169,588.56
Citizens Bank & Trust Company	48,524,963.90	42,522,541.62
The Paducah Bank & Trust Co.	15,562,846.36	13,982,384.83
<u>Savings and Loan Associations</u>	<u>Assets</u>	<u>Shared Accounts</u>
Home Federal Savings & Loan Association	\$21,982,319.85	\$19,625,174.14
First Federal Savings & Loan Association of Paducah	9,886,715.55	9,160,495.64

Hotels and Motels

<u>Number</u>	<u>Units</u>
20	1,118

Clubs and Organizations

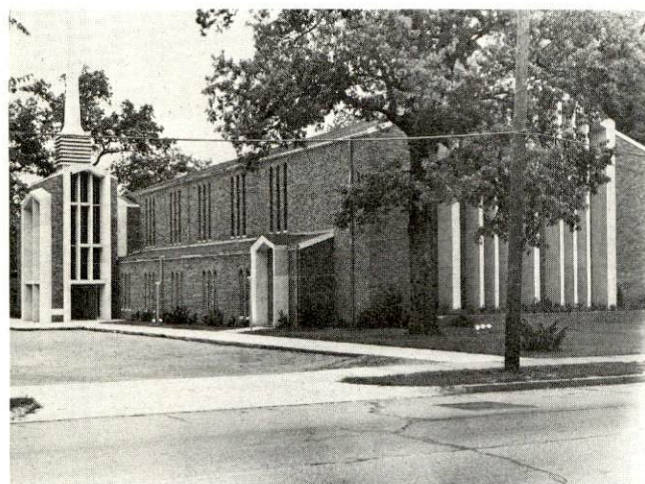
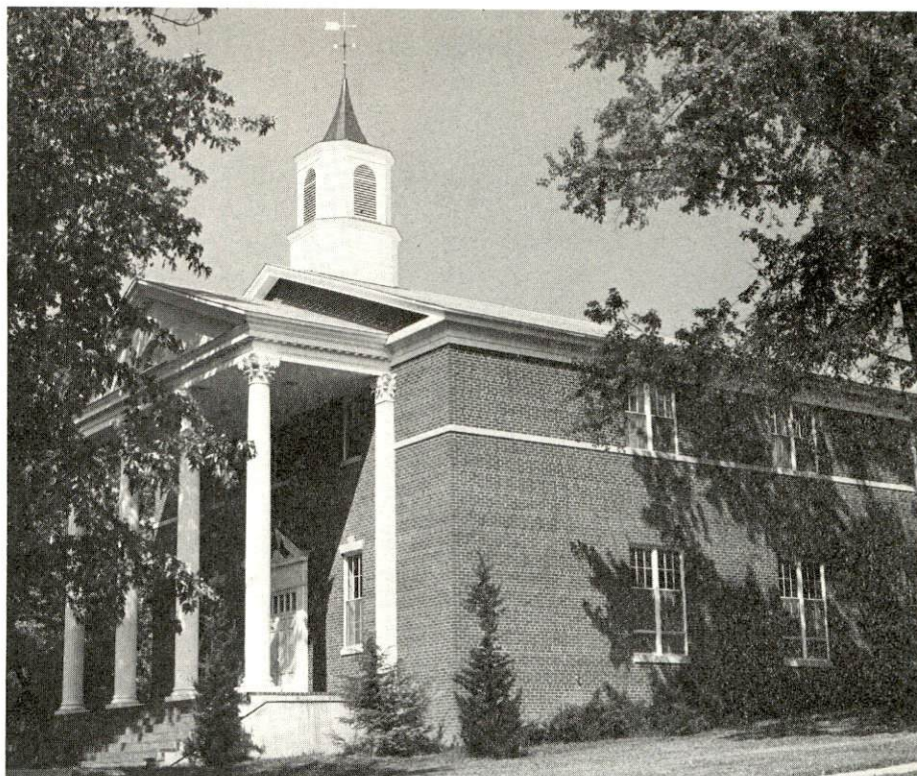
Business and Civic - Chamber of Commerce, Jaycees, Kiwanis, Lions, Rotary, Optimists, Civitan, Toastmasters, Medical Society, Ministerial Association, Salvation Army, Red Cross, Welcome Wagon, Beautification Board, Community Chest

Fraternal - American Legion, Eagles, FOP, IOOF, Masonic Lodge, Moose Lodge, Knights of Templar, Shrine, VFW, Elks, Knights of Columbus, Woodmen of the World

Women's - Woman's Club, B & PW Club, DAR, Eastern Star, Homemakers, Garden Clubs, Lioness, Jaycettes, Civitana, Altrusa, Elks Auxiliary, Moose Auxiliary, American Legion Auxiliary, VFW Auxiliary, American Business Women's Association, American Association of University Women, Daughters of the Confederacy, League of Women Voters, Daughters of America

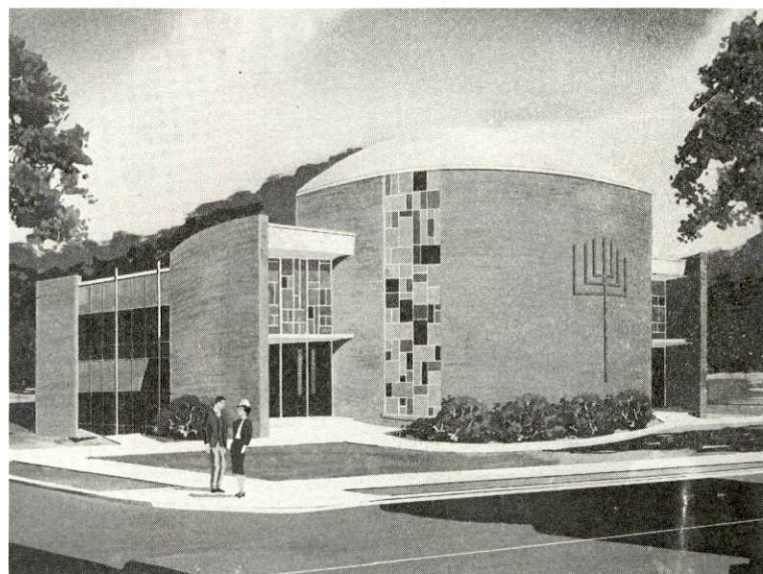
Youth - Boy Scouts, Girl Scouts, Cub Scouts, Brownies, FFA, FHA, 4-H, FTA, Beta Club, FBLA

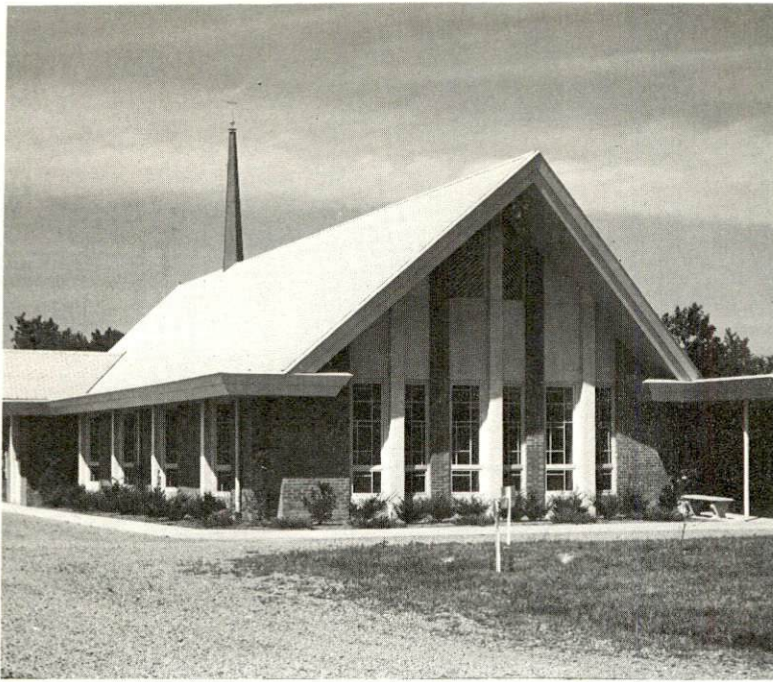
IMMANUEL BAPTIST CHURCH



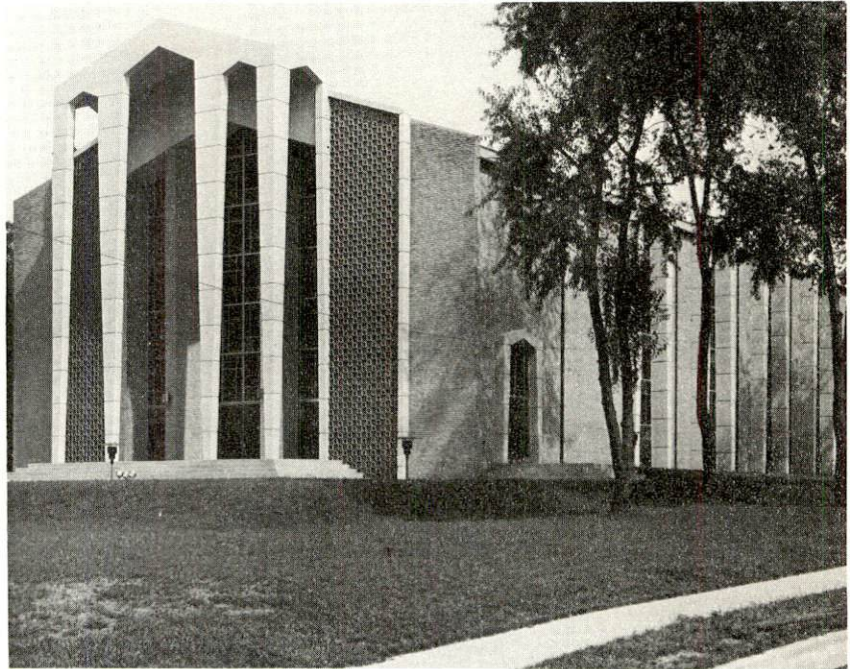
CHURCH OF CHRIST

TEMPLE ISRAEL - JEWISH CHURCH





EVANGELICAL REFORMED CHURCH



FIRST BAPTIST CHURCH



WESTMINISTER PRESBYTERIAN CHURCH

RECREATION

Local

Public Recreation Facilities

Supervised program - yes

Parks - 11

Playgrounds - 11

Swimming pool - 1

Golf course - 1

Tennis courts - 14

Baseball diamond - 1

Football fields - 5

Other - softball fields - 6

Private Recreation Facilities

Country clubs - 2

Golf courses - 2

Swimming pools - 2

Movie theaters - 2 indoor and 2 drive-in

Bowling lanes - 32

Tourist Attractions

Old Market House Museum

Barkley Monument

Grave of Irvin S. Cobb

Alben Barkley Museum

Red Line Tour for entire city

Cultural Events

Community Concert Series

Art Guild

Theatre

Public lectures

Area (Within 50 miles)

Kentucky Dam Village State Resort Park

Kenlake State Park

Lake Barkley State Park

Land Between the Lakes National Recreation Area

Columbus-Belmont Park

Ancient Buried City

AGRICULTURE - NATURAL RESOURCES - CLIMATE

Agriculture 13/

	<u>McCracken County</u>	<u>Labor Market Area</u>
Total land area (acres)	160,000	1,202,560
Percent of area in farm land	48.8	66.6
Number of farms	872	6,729
Average size of farms (acres)	89.5	118.9
1964 value of all farm products	\$2,448,606	\$24,919,798
Value per farm	\$ 2,808	\$ 3,703
Total crop sales	\$1,200,929	\$ 9,755,011
Total livestock & livestock products	\$1,245,283	\$15,155,065
1968 agricultural production included:		
Burley tobacco (lbs.)	981,000	4,619,000
Corn (bu.)	354,000	4,597,000
Cattle and calves (number)	14,300	148,300
Hogs and pigs (number)	8,100	110,100
Milk production, 1967 (lbs.)	7,535,000	82,795,000

Natural Resources

Principal mineral resources	sand and gravel
Other mineral resources	local clays
Acres of commercial forest land	37,600
Most abundant tree species	red oaks, sweet gum, white oaks, hickories, soft maple, ash, cottonwood

Climate 14/

	<u>McCracken County</u>
Temperature	
Annual mean (30-year record)	59.6 degrees
Average annual 1969	58.2 degrees
Record highest July, 1954 (27-year record)	104.0 degrees
Record lowest January, 1963 (27-year record)	- 5.0 degrees
Seasonal heating degree-days (30-year record)	3,821
Precipitation	
Mean annual total (30-year record)	45.23 inches
Mean annual snow and sleet (27-year record)	9.70 inches
Total precipitation 1969	42.06 inches
Mean number days precipitation (27-year record) (.01 inch or more)	114
Average number days thunderstorms (22-year record)	53
Prevailing winds (22-year record)	southwest

HISTORY

McCracken County, the seventy-eighth county formed in Kentucky, dates from 1825. Its territory was taken from Hickman County. The Tennessee and Ohio Rivers flow around its northern side.

The first settlers in McCracken County chose Wilmington, a town about 8 miles west of Paducah and 3 miles from the Ohio River, as a dwelling place. This land was owned first by General George Rogers Clark. Virginia gave him the land for meritorious service during the Revolutionary War. Clark had the habit of making debts which he was unable to pay. His lands in McCracken County were sold for debts, and were bought by George Woolfolk, a brother-in-law. William Clark, a brother, whose exploits with General Meriwether Lewis opened the Oregon territory to the United States, bought the lands, after a few years, from Woolfolk. William Clark gave the site of Paducah two years after McCracken County was organized, and the county seat was moved there from Wilmington in 1827. Paducah was incorporated as a town in 1830, and as a city in 1856.

James and William Pore built the first log cabin in Paducah (then known as Pekin) at the foot of Broadway. James Davis built a hut at the northeast corner of First and Broadway, and later constructed a frame house where Riverside Hospital now stands. Albert Hays, however, built the first frame house in the town in 1826.

The county was named for Captain Virgil McCracken who lost his life at the Battle of the Raisin on January 22, 1813.

Paducah is located on the Ohio River just below the mouth of the Tennessee. It was named for Chief Paduke, a Chickasaw, who sold the Purchase area to General Jackson and Isaac Shelby in 1818. After a slow start its growth was accelerated with the production of coal, the building of railroads, and the coming of industry into the area. It became an important river port as well as the shipping hub for the entire region. Later federal and state highways connected the town with other parts of the state and adjoining states.

In 1847, the first submarine cable used by Western Union was laid on the bottom of the Ohio River between Paducah and the Illinois side.

The Civil War had a great effect on the people of Paducah. Allegiances were divided and tensions ran high. The Battle of Paducah created great excitement among the residents. Sixty houses were destroyed to prevent the Confederates from taking shelter in them. General Grant took possession of the town in September, 1861.

J. R. Husbands was a prominent pioneer lawyer of McCracken County. Colonel Ed Murray, the builder of the Merrimac, a heavy ironclad with which the South tried to break the blockade of Norfolk, was a resident of Paducah. Irvin S. Cobb, journalist, humorist, author of short stories, and playwright, was born in Paducah in 1876. He became staff humorist on the New York World in 1905, and was war correspondent for the Saturday Evening Post during the greater part of World War I. His best known book, Old Judge Priest, has a Kentucky background. Among his other works, Exit Laughing, is autobiographical. He was the first winner of the O. Henry Award for the best short story of the year 1922. He died in New York City, March 10, 1944. He requested that his ashes be used to fertilize a dogwood tree at Oak Grove, the family burial plot, which would be a living monument to him if it lived.

Although not born in McCracken County, Alben W. Barkley spent most of his life as a resident of Paducah. He served as prosecuting attorney and county judge before going to the Congress of the United States in 1912. He went to the Senate in 1926, and during the 1930's supported the New Deal program, especially the Neutrality Act of 1939, the Lend-Lease program of 1941, the Reciprocal Trade Policy of 1934, and the Marshall Plan. He was Vice President under Harry S. Truman, then was re-elected to the Senate. He died in office on April 30, 1956, while addressing the student body at Washington and Lee University. His last words were: "I would rather be a servant in the House of the Lord than sit in the seat of the mighty."

SOURCES OF INFORMATION

- 1/ U. S. Department of Commerce, Bureau of the Census, Census of Population, 1950, 1960, 1970 (Preliminary figures).
- 2/ Kentucky Department of Economic Security, Division of Research and Statistics.
- 3/ Kentucky Department of Economic Security, Number of Workers in Manufacturing Industries Covered by Kentucky Unemployment Insurance Law Classified by Industry and County, September 1959, September 1969.
- 4/ Greater Paducah Chamber of Commerce.
- 5/ Kentucky Department of Economic Security, Division of Employment Service, Paducah Office.
- 6/ Kentucky Department of Economic Security, Kentucky Labor Supply Estimates by County, January 1970.
- 7/ Kentucky Department of Commerce, Future Labor Supply by 1976.
- 8/ University of Kentucky, Office of Development Services and Business Research, Total Personal Income for Kentucky.
- 9/ University of Kentucky, Office of Development Services and Business Research, Per Capita Income in Kentucky.
- 10/ Illinois Central Railroad, Louisville, Kentucky.
- 11/ McLean Trucking Service, Winston-Salem, North Carolina.
- 12/ McCracken County Tax Commissioner.
- 13/ U. S. Department of Commerce, Bureau of the Census, Census of Agriculture, 1964. U. S. Department of Agriculture and Kentucky Department of Agriculture, Kentucky Agricultural Statistics, 1969.
- 14/ U. S. Department of Commerce, Environmental Science Services Administration, Climatological Data, 1969.

All other information was obtained from governmental offices, local businesses and organizations.