

1972

## Industrial Resources: McCreary County

Kentucky Library Research Collections  
Western Kentucky University, [spcol@wku.edu](mailto:spcol@wku.edu)

Follow this and additional works at: [https://digitalcommons.wku.edu/mccreary\\_cty](https://digitalcommons.wku.edu/mccreary_cty)



Part of the [Business Administration, Management, and Operations Commons](#), [Growth and Development Commons](#), and the [Infrastructure Commons](#)

---

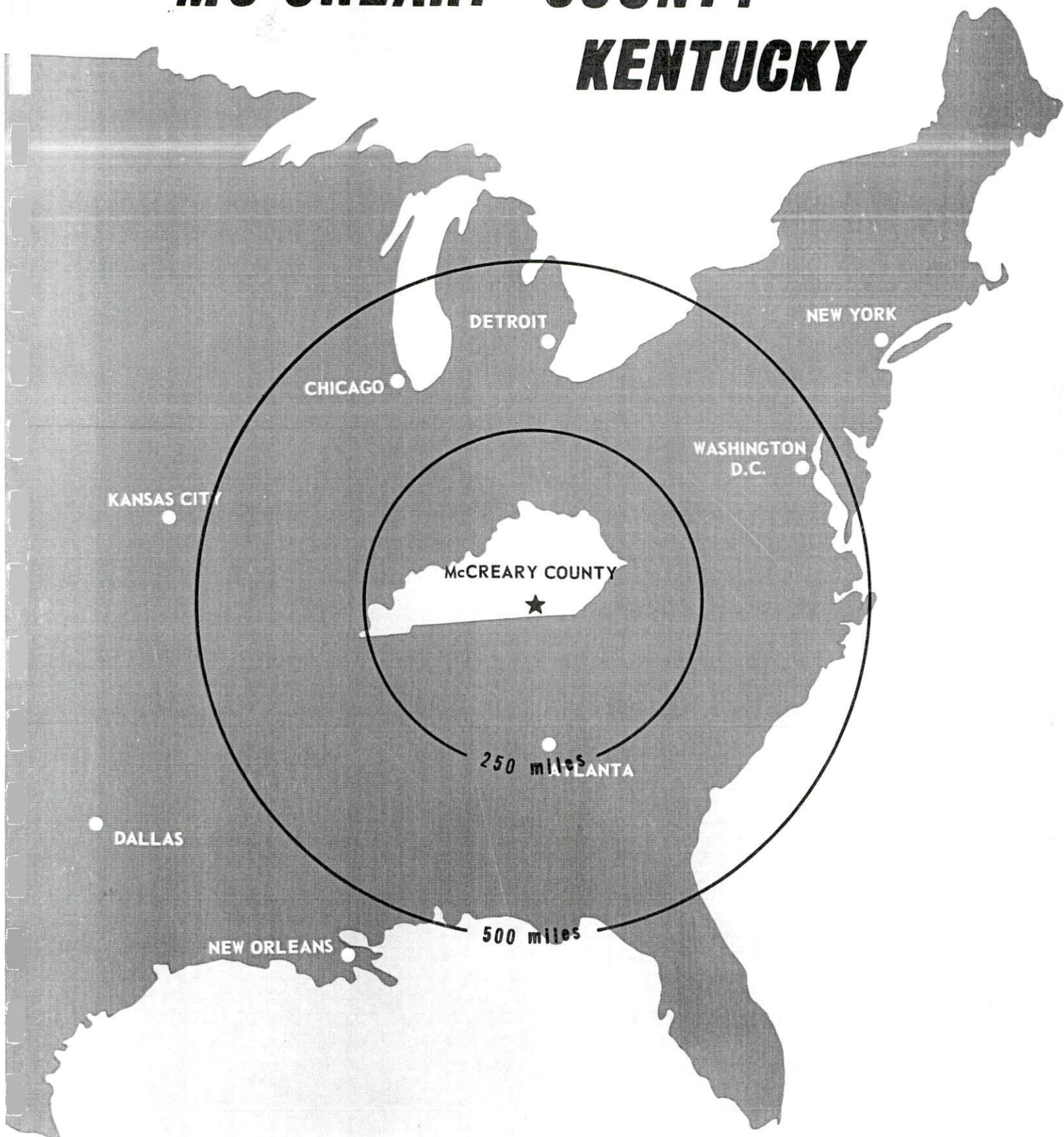
### Recommended Citation

Kentucky Library Research Collections, "Industrial Resources: McCreary County" (1972). *McCreary County*. Paper 11.  
[https://digitalcommons.wku.edu/mccreary\\_cty/11](https://digitalcommons.wku.edu/mccreary_cty/11)

This Report is brought to you for free and open access by TopSCHOLAR®. It has been accepted for inclusion in McCreary County by an authorized administrator of TopSCHOLAR®. For more information, please contact [topscholar@wku.edu](mailto:topscholar@wku.edu).

# INDUSTRIAL RESOURCES

## ***MC CREARY COUNTY*** ***KENTUCKY***



MCCREARY COUNTY INDUSTRIAL SITES

1972

## MCCREARY COUNTY INDUSTRIAL SITES

1972

For more information about the following sites, contact Judge R.H. Anderson or Mr. C.C. Shepherd, McCreary County Industrial Development Corporation, Inc., Whitley City, Kentucky; or the Kentucky Department of Commerce, Frankfort, Kentucky.

SITE #1: ACREAGE: 35 1/2 acres (20 acres cleared)  
LOCATION: 1 mile north of Greenwood  
HIGHWAY ACCESS: Approximately 1,450 feet west of U.S. 27;  
gravel access road onto site  
RAILROADS: Southern Railway System just west of site;  
old railroad bed on site  
WATER: McCreary County Water District  
SIZE LINE: 8-inch line is being extended to site.  
ELECTRICITY: South Kentucky RECC  
SEWERAGE: Package plant is necessary  
OWNERSHIP: McCreary County Development Association, Inc.

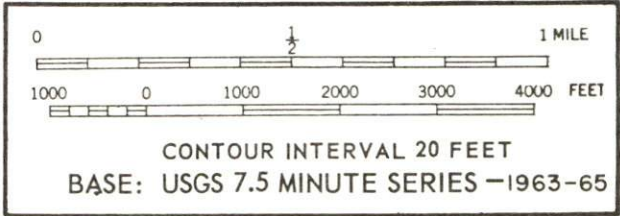
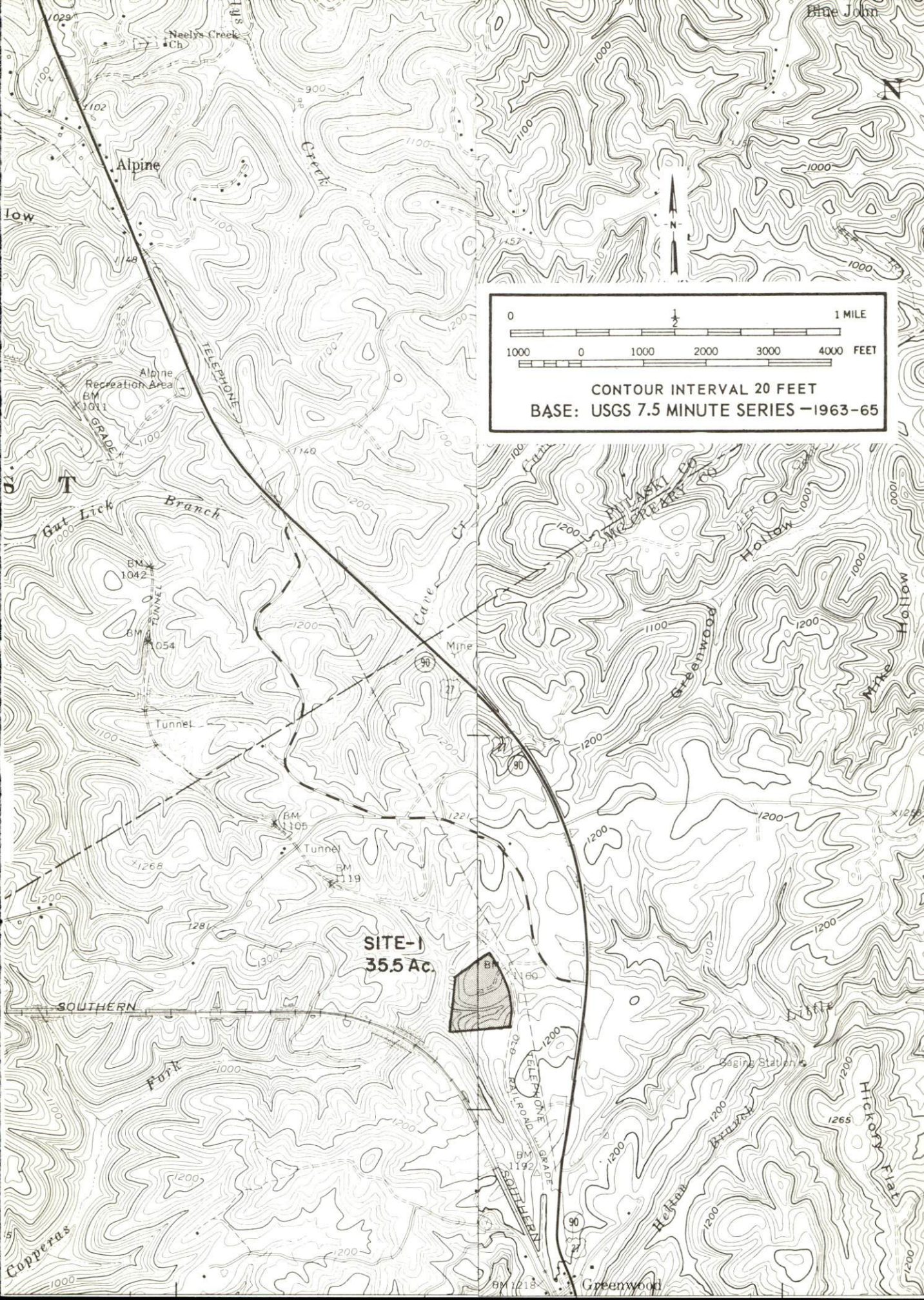
SITE #3: ACREAGE: 41 acres  
LOCATION: South edge of Pine Knot  
HIGHWAY ACCESS: U.S. 27 borders site on the west.  
RAILROADS: Southern Railway System; spur is to edge of site.  
WATER: McCreary County Water District  
SIZE LINE: 8-inch line is being extended to site.  
ELECTRICITY: South Kentucky RECC  
SEWERAGE: Package plant is necessary.  
OWNERSHIP: McCreary County Industrial Development Corporation, Inc.

SITE #4: ACREAGE: 43 acres (25 acres cleared)  
LOCATION: 4 miles south of Pine Knot  
HIGHWAY ACCESS: 400 feet east of U.S. 27; two access roads  
lead to site.  
RAILROADS: Not rail served  
WATER;\* McCreary County Water District  
SIZE LINE: 8-inch line is being extended to site.  
ELECTRICITY: South Kentucky RECC  
SEWERAGE: Package plant is necessary.  
OWNERSHIP: McCreary County Development Association, Inc.

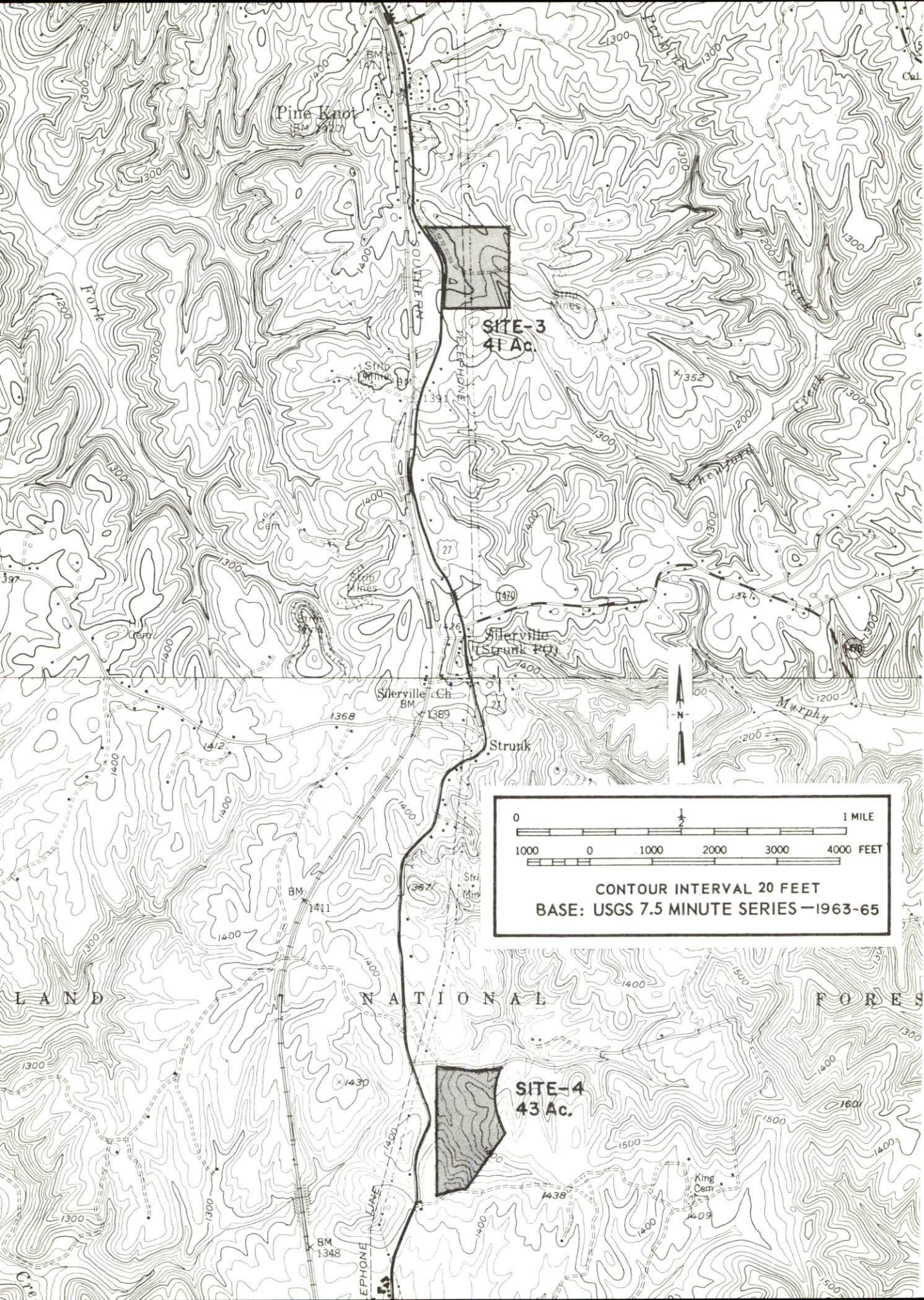
---

\*A 150,000-gallon water storage tank is to be constructed on this site.









Pine Knot  
BM 1427



**SITE-3**  
41 Ac.

Silerville  
(Strunk P.O.)

Silerville Ch  
BM 1389

Strunk

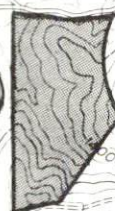


CONTOUR INTERVAL 20 FEET  
BASE: USGS 7.5 MINUTE SERIES - 1963-65

LAND

NATIONAL

FOREST



**SITE-4**  
43 Ac.

BM 1348

King  
Cem



INDUSTRIAL RESOURCES  
MCCREARY COUNTY, KENTUCKY

Prepared by  
The Kentucky Department of Commerce  
in cooperation with  
The McCreary County Development Association  
1972

This copy has been prepared by the Kentucky Department of Commerce,  
Division of Research and Planning, and the cost of printing paid from  
state funds.



## TABLE OF CONTENTS

<u>Chapter</u>	<u>Page</u>
INDUSTRIAL SITES . . . . .	i
MCCREARY COUNTY, KENTUCKY - A RESOURCE PROFILE . . . . .	1
THE LABOR MARKET . . . . .	3
Population Trends . . . . .	3
General Employment Characteristics, 1970 . . . . .	3
Manufacturing Employment Trends by Industry . . . . .	3
McCreary County Manufacturing Firms, Their Products and Employment . . . . .	4
Wage Rates for Selected Occupations . . . . .	4
Labor Organizations . . . . .	5
Current and Future Labor Supply . . . . .	5
Total Personal Income . . . . .	5
Per Capita Personal Income . . . . .	5
EDUCATION . . . . .	6
Public Schools . . . . .	6
Vocational Schools . . . . .	6
Colleges and Universities . . . . .	7
TRANSPORTATION . . . . .	8
Rail . . . . .	8
Truck Service . . . . .	8
Air . . . . .	9
Bus . . . . .	9
Taxi . . . . .	9
POWER AND FUEL . . . . .	10
Electricity . . . . .	10
Natural Gas . . . . .	10
WATER AND SEWERAGE . . . . .	11
Water . . . . .	11
Sewerage . . . . .	11

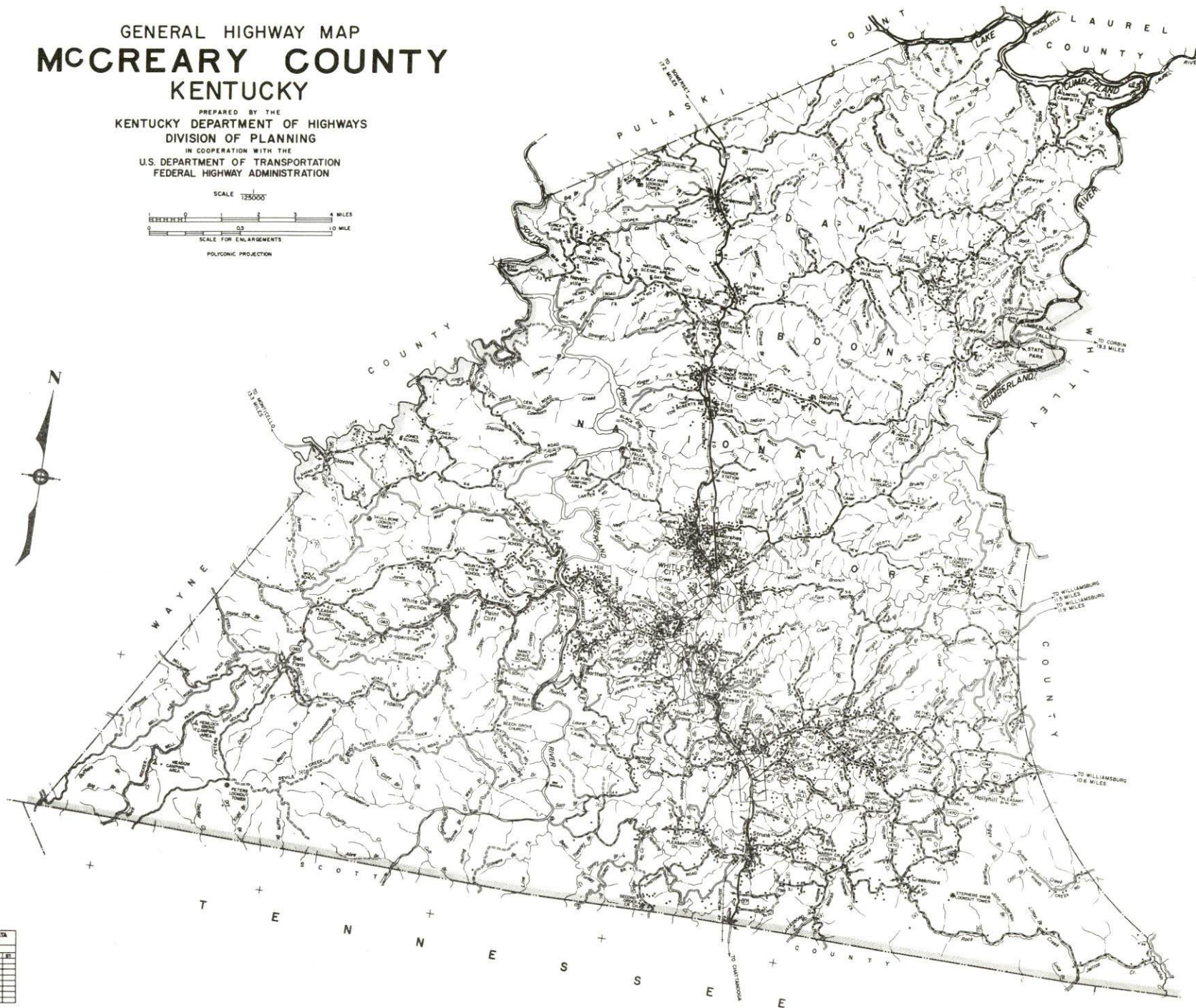
<u>Chapter</u>	<u>Page</u>
LOCAL GOVERNMENT . . . . .	12
City . . . . .	12
County . . . . .	12
Assessed Value of Property, 1971 . . . . .	12
Local General Property Tax Rates Per \$100 of Assessed Valuation, 1971 . . . . .	12
Safety . . . . .	13
Police . . . . .	13
Fire . . . . .	13
Rescue Service . . . . .	13
Sanitation . . . . .	13
HEALTH . . . . .	14
Hospitals . . . . .	14
Nursing Homes . . . . .	14
Public Health . . . . .	14
OTHER LOCAL FACILITIES . . . . .	15
Communications . . . . .	15
Religious Institutions . . . . .	15
Financial Institutions . . . . .	15
Hotels and Motels . . . . .	15
Clubs and Organizations . . . . .	16
RECREATION . . . . .	17
Local . . . . .	17
Area . . . . .	17
AGRICULTURE - NATURAL RESOURCES - CLIMATE . . . . .	18
Agriculture . . . . .	18
Natural Resources . . . . .	18
Climate . . . . .	18
HISTORY . . . . .	19



# GENERAL HIGHWAY MAP MCCREARY COUNTY KENTUCKY

PREPARED BY THE  
KENTUCKY DEPARTMENT OF HIGHWAYS  
DIVISION OF PLANNING  
IN COOPERATION WITH THE  
U.S. DEPARTMENT OF TRANSPORTATION  
FEDERAL HIGHWAY ADMINISTRATION

SCALE 1:250,000  
0 1 2 3 4 MILES  
0 1 2 3 4 5 6 7 8 9 10 MILE  
SCALE FOR ENLARGEMENTS  
POLYCONIC PROJECTION

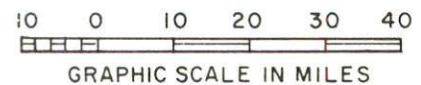
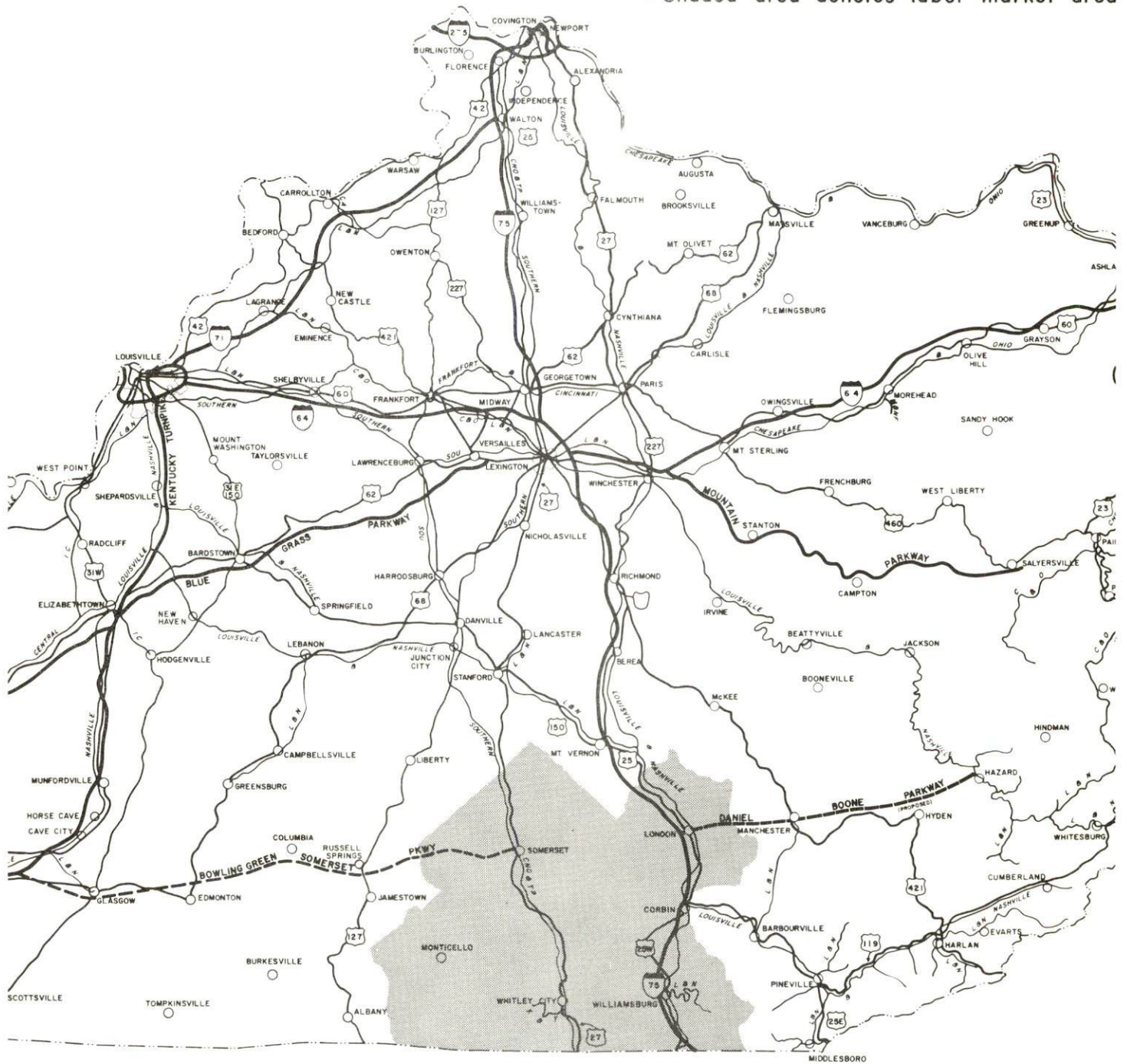


ORIGINAL DATA	1958
REVISIONS	
DATE BY	DATE BY
1-1-59 J.E.M.	
2-1-59 J.E.M.	
3-1-59 J.E.M.	
4-1-59 J.E.M.	
5-1-59 J.E.M.	
6-1-59 J.E.M.	
7-1-59 J.E.M.	
8-1-59 J.E.M.	
9-1-59 J.E.M.	
10-1-59 J.E.M.	
11-1-59 J.E.M.	
12-1-59 J.E.M.	



# MC CREARY COUNTY LABOR MARKET AREA

\* Shaded area denotes labor market area





## MCCREARY COUNTY, KENTUCKY - A RESOURCE PROFILE

### Location

McCreary County is located in the historic Daniel Boone National Forest in southeastern Kentucky on the Kentucky-Tennessee border. Whitley City, the county seat of McCreary County, is 90 miles north of Knoxville, Tennessee, 107 miles south of Lexington, Kentucky, and 165 miles southeast of Louisville, Kentucky.

The population of McCreary County in 1970 was 12,548, and the population of Whitley City was 1,060.

### The Economic Framework

Total employment in McCreary County in 1970 was 1,700 with manufacturing providing 325 of these jobs, government 600 jobs, and mining and quarrying 230 jobs. Major industrial products are men's and boys' dress shirts and lumber.

Per capita personal income in the county in 1969 was \$984 or \$1,863 below the Kentucky average.

The McCreary County labor market area includes McCreary County, the four adjoining Kentucky counties, and the adjoining Tennessee county. In 1970, total employment in the Kentucky portion of the labor market area averaged 33,300. Manufacturing provided 5,825 jobs, trade and services 6,880 jobs, government 5,100 jobs, and agriculture 5,400 jobs. Area industrial employment is heaviest in the lumber and furniture, and apparel industries.

Despite important industrial gains in recent years, the area still has a deficit of 4,948 manufacturing jobs when measured against the national industrial employment-population ratio. This indicates an area where the potential for additional manufacturing production is excellent.

### Resources For Growth

1. There is a current estimated labor supply of 6,000 men and 6,605 women available for industrial jobs in McCreary and the adjoining Kentucky counties. In addition, 6,375 young men and 5,880 young women in the area will have become 18 years of age by 1978 and potentially available for work. Also, the current labor supply would be increased by the number of men and women in the adjoining Tennessee county who are available for industrial jobs.

2. The Southern Railway System serves McCreary County. U.S. 27 runs through the center of the county, connecting with I-75 in Chattanooga, Tennessee.

3. Energy - Electricity is supplied by the Kentucky Utilities Company and South Kentucky RECC.

4. Industrial sites - McCreary County has three sites available for industrial use.

5. There are four senior colleges and three junior colleges within 80 miles of Whitley City. A community college and an area vocational school are located in Somerset, 28 miles distant.

#### Community Programs For Improvement

Recent community improvements include: a new office building, new jail; three laundromats; three additional county policemen with radio patrol cars; Cumberland Falls Estates, an 800-acre residential and recreational development. A shopping center and an airport for light aircraft are under construction.

Planned improvements include: expansion of Health Department, two 150,000-gallon water storage tanks, 66,000-acre recreation area, new central high school and vocational extension center.

McCreary County recently received the National Beautification Award, as a result of clean-up efforts and accomplishments that resulted from these efforts, and setting of standards to continue beautification of McCreary County.

#### Recreation, Entertainment and Livability

Cumberland Falls State Resort Park is partially in McCreary County. This park has an excellent lodge and dining room. Other facilities include housekeeping cabins, cottages, beach, bathhouse, riding stables, picnic areas, trailer and camping areas.

Natural Arch, in northern McCreary County, is an excellent area for camping and picnicking.

McCreary County offers the sportsman many hunting and fishing opportunities. The Cumberland River and its tributaries are known for an abundance of game fish. The famed annual "walleye run" on the upper Cumberland draws fishermen from many parts of the Eastern United States. Hunting is highlighted by the annual deer season in parts of McCreary County.

There are 22 natural arches in McCreary County and the U.S. Forest Service has provided 29 miles of hiking trails.



# THE LABOR MARKET

## POPULATION TRENDS <sup>1/</sup>

Area	Population			Percent Change	
	1970	1960	1950	1960-70	1950-60
Whitley City	1,060	1,034	-	+ 2.5	-
Labor Market Area	113,581	112,282	129,324	+ 1.2	-13.2
McCreary County	12,548	12,463	16,660	+ 0.7	-25.2
Laurel County	27,386	24,901	25,797	+10.0	- 3.5
Pulaski County	35,234	34,403	38,452	+ 2.4	-10.5
Wayne County	14,268	14,700	16,475	- 2.9	-10.8
Whitley County	24,145	25,815	31,940	- 6.5	-19.2

## GENERAL EMPLOYMENT CHARACTERISTICS, 1970 <sup>2/</sup>

Major Employment Group	Employment	
	McCreary County	Labor Market Area
TOTAL	1,700	33,300
Agricultural	100	5,400
Nonagricultural	1,600	27,900
Manufacturing	323	5,823
Trade and Services	241	6,878
Government	600	5,100
Mining and Quarrying	230	921

## MANUFACTURING EMPLOYMENT TRENDS BY INDUSTRY SEPTEMBER 1971 AND 1961 <sup>3/</sup>

Industry	McCreary County			Labor Market Area		
	1971	1961	%Change	1971	1961	%Change
TOTAL	216	52	+315.4	6,150	2,676	+ 129.8
Food & kindred products	0	0	-	770	555	+ 38.7
Apparel, textiles, leather	180	0	-	1,903	892	+ 113.3
Lumber & furniture	35	52	- 32.7	1,811	812	+ 123.0
Printing, publishing, paper	1	0	-	572	80	+ 615.0
Chemicals, petroleum, coal, rubber	0	0	-	278	117	+ 137.6
Stone, clay & glass	0	0	-	419	191	+ 119.4
Machinery & metal products	0	0	-	390	22	+1672.7
Other	0	0	-	7	7	-

MCCREARY COUNTY MANUFACTURING FIRMS,  
THEIR PRODUCTS AND EMPLOYMENT <sup>4/</sup>

<u>Firm</u>	<u>Product</u>	<u>Employment</u>		
		<u>Total</u>	<u>Male</u>	<u>Female</u>
<u>Whitley City</u>				
Cressel Bryant	Lumber	10	10	0
Leslie Martin Sawmill	Lumber	11	11	0
<u>Pine Knot</u>				
Dermon King Lumber Co.	Lumber, wood pallets	3	3	0
Kentucky Hills Industries	Wood handcraft, hand turned pottery, hand weaving	50	30	20
King Lumber Products	Sawmill	15	15	0
<u>Stearns</u>				
King Lumber Co., Inc.	Lumber	26	24	2
McCreary County Record	Newspaper, job printing	3	1	2
McCreary Manufacturing	Men's and boys' dress shirts	221	20	201

WAGE RATES FOR SELECTED OCCUPATIONS  
MCCREARY COUNTY, KENTUCKY <sup>5/</sup>

<u>Classification</u>	<u>Wages Per Hour</u>		
	<u>Starting</u>	<u>Maximum</u>	<u>Prevailing</u>
<u>Production Employees</u>			
Inspector	\$1.60	\$2.00	\$1.75
Production Laborer	1.60	1.90	1.70
Welder, Arc or Acetylene (Class-A)	1.90	2.50	2.25
<u>Service Employees</u>			
Electrician (Class-A)	\$1.75	\$3.75	\$2.80
Laborer	1.60	1.75	1.70
Mechanic, Maintenance	1.75	3.00	2.50
Truck Driver, Industrial (Class-A)	1.80	2.75	2.00
<u>Office Employees</u>			
Bookkeeper	\$1.75	\$2.50	\$2.00
File Clerk	1.60	2.00	1.90
Receptionist	1.60	2.25	1.90
Secretary	1.60	2.50	1.95
Typist	1.60	2.25	1.90



## LABOR ORGANIZATIONS

There are no unions representing manufacturing workers in McCreary County.

### CURRENT AND FUTURE LABOR SUPPLY - MCCREARY COUNTY LABOR MARKET AREA

<u>Area</u>	<u>Current Labor Supply, 1971 <sup>6/</sup></u>			<u>Future Labor Supply by 1978 <sup>7/</sup></u> <u>(Becoming 18 Years of Age)</u>		
	<u>Total</u>	<u>Male</u>	<u>Female</u>	<u>Total</u>	<u>Male</u>	<u>Female</u>
Labor Market Area						
Area	12,609	6,002	6,607	12,254	6,375	5,879
McCreary County	1,731	742	989	1,541	824	717
Laurel County	2,898	1,201	1,697	2,973	1,494	1,479
Pulaski County	3,309	1,692	1,617	3,599	1,851	1,748
Wayne County	2,371	1,366	1,005	1,558	793	765
Whitley County	2,300	1,001	1,299	2,583	1,413	1,170

### TOTAL PERSONAL INCOME <sup>8/</sup>

<u>Area</u>	<u>1969*</u>	<u>1959</u>	<u>% Change</u>
McCreary County	\$ 11,958,000	\$ 6,737,000	+ 77.5
Labor Market Area	199,410,000	91,838,000	+117.1
Kentucky	9,202,000,000	4,655,000,000	+ 97.6

### PER CAPITA PERSONAL INCOME <sup>9/</sup>

<u>Area</u>	<u>1969*</u>	<u>1959</u>	<u>% Change</u>
McCreary County	\$ 984	\$ 563	+ 74.8
Labor Market Area	\$984 to 2,180	\$563 to 953	NA
Kentucky	2,847	1,552	+ 83.4

\*Preliminary figures.

## EDUCATION

### Public Schools

	<u>McCreary County</u>
Total Enrollment	3,474
Elementary	2,409
Junior High	199
High School	866
Student-Teacher Ratio	32-1
Elementary	32-1
Junior High	49-1
High School	17-1
State Rating of High School	Standard (1) Basic (1)
Percent High School Graduates to College	31.7
Current Expenditures Per Pupil	\$399.43
Bonded Indebtedness, June 30, 1971	\$104,000

### Vocational Schools

	<u>Nearest Area School</u>
Location	Somerset Area Vocational School
Miles Distant	Somerset
Curriculum	28
	Data Processing
	General Clerical
	Secretarial-Steno
	Distributive Education
	Health Careers
	Electronics (Technology)
	Aircraft Technician Maintenance
	Appliance Repair
	Auto Mechanics
	Drafting
	Machine Shop
	Printing



### Colleges and Universities

<u>Name</u>	<u>Area - Within 80 Miles</u>		<u>Highest Degree Conferred</u>
	<u>Location</u>	<u>Enrollment</u>	
Centre College	Danville	717	Baccalaureate
Union College	Barbourville	902	Masters
Cumberland College	Williamsburg	1,807	Baccalaureate
Sue Bennett Junior College	London	181	Associate
Berea College	Berea	1,448	Baccalaureate
Somerset Community College	Somerset	682	Associate
Lindsey Wilson Junior College	Columbia	324	Associate

## TRANSPORTATION

### Rail

Line serving Stearns - Southern Railway System

Services - Freight, siding, switching, REA Express

#### RAILWAY TRANSIT TIME FROM STEARNS, KENTUCKY, TO: 10/

No. of Days		No. of Days	
City	CL	City	CL
Atlanta, Ga.	2	Los Angeles, Calif.	8
Birmingham, Ala.	2	Louisville, Ky.	2
Chicago, Ill.	4	Nashville, Tenn.	4
Cincinnati, Ohio	2	New Orleans, La.	3
Cleveland, Ohio	4	New York, N. Y.	5
Detroit, Mich.	4	Pittsburgh, Pa.	4
Knoxville, Tenn.	2	St. Louis, Mo.	3

### Truck Service

#### Company

Eagle Express Co., Inc.  
Eldridge Truck Line  
United Parcel Service

#### Home Office

Somerset, Kentucky  
Science Hill, Kentucky  
Louisville, Kentucky



HIGHWAY MILES AND TRUCK TRANSIT TIME IN DAYS FROM  
WHITLEY CITY, KENTUCKY, TO SELECTED MARKET CENTERS

City	Highway Miles	Delivery Time <u>11</u> / TL		City	Highway Miles	Delivery Time TL	
Atlanta, Ga.	281	3		Los Angeles, Calif.	1,949	7	
Birmingham, Ala.	307	3		Louisville, Ky.	165	2	
Chicago, Ill.	481	4		Nashville, Tenn.	150	3	
Cincinnati, Ohio	184	2		New Orleans, La.	658	5	
Cleveland, Ohio	432	4		New York, N. Y.	866	5	
Detroit, Mich.	453	4		Pittsburgh, Pa.	482	5	
Knoxville, Tenn.	90	2		St. Louis, Mo.	447	3	

Air

Nearest Commercial

Location: London-Corbin War Memorial Airport  
 3 miles south of London, 40 miles distant  
 Runways: 1 paved  
 Length: 6,000 feet  
 Traffic Control: Wind sock  
 Lighting: Beacon, runway and obstruction lights  
 Services: 80 and 100 octane, JP-A-50, Piedmont Airlines,  
 taxi, car rental, weather flight training, charter  
 and ambulance service, vending machines

Bus

Southern Greyhound Bus Lines

Taxi

24-hour service

## POWER AND FUEL

### Electricity

Company serving Whitley City, Pine Knot, and Stearns - Kentucky  
Utilities Company

Source of power - Kentucky Utilities Company

Total generating capacity - 1,215,000 KW

Industrial rates furnished by - Kentucky Utilities Company, Industrial  
Development Division, Lexington, Kentucky

Company serving McCreary County - South Kentucky RECC

Source of power - East Kentucky Power Cooperative

Total generating capacity - 548,000 KW

Industrial rates furnished by - South Kentucky RECC, Somerset, Kentucky

### Natural Gas

Natural gas is not available in McCreary County at this time.  
Propane gas is available from local distributors.



## WATER AND SEWERAGE

### Water

Company serving McCreary County - McCreary County Water District

Source - lake

Treatment plant capacity - 766,000 gpd

Average daily consumption - 275,000 gallons

Peak daily consumption - 350,000 gallons

Type treatment - chlorine, lime, feri-floc

Storage capacity - 400,000 gallons

Size mains - 2, 4, 6, and 8 inches

Average pressure - 72 psi

Average temperature - 42 degrees

#### MONTHLY WATER RATES FOR WHOLESALE AND INDUSTRIAL CONSUMERS

First	3,000 gallons	\$4.50 Minimum bill
Next	2,000 gallons	1.50 per M gallons
Next	5,000 gallons	1.00 per M gallons
Next	10,000 gallons	.75 per M gallons
Next	20,000 gallons	.50 per M gallons
All over	40,000 gallons	.40 per M gallons

Surface water sources - Cumberland River

Average discharge - Cumberland River at Cumberland Falls 3,099 cfs  
(60 years, USGS)

Expected ground water yield - 5 to 50 gpm over entire county

### Sewerage

The communities in McCreary County are not served by sanitary sewerage systems. Septic tanks are utilized for sewage disposal.

## LOCAL GOVERNMENT

### City

None of the communities in McCreary County are incorporated at this time.

### County

Structure - County Judge - 4-year term; 8 magistrates - 4-year terms  
Budget 1971-72 - General Fund \$65,750; Road Fund \$60,688

### Assessed Value of Property, 1971

<u>Classes of Property*</u>	<u>McCreary County</u>
Real Estate	\$17,852,179
Tangibles	6,135,221
Public Service	8,931,775 (1970)

### Local General Property Tax Rates Per \$100 of Assessed Valuation, 1971 12/

<u>Taxing Unit**</u>	<u>McCreary County</u>
State	\$ .015
County	.266
School	.400
Total	\$ .681

\* Property assessed at 100 percent of fair value.

\*\* Manufacturing machinery, raw materials inventories and goods in process inventories are not subject to local tax. State rate is only \$0.15 per \$100.



## Safety

### Police

### McCreary County

Total staff	6
Radio-patrol cars	6

### Fire

Volunteers	45
Equipment:	
1,000 gpm pumper	1
750 gpm pumper	1
utility truck	1
750-gallon tanker truck	1

### Rescue Service

#### McCreary County Rescue Squad:

Number of volunteers - 25

Equipment - 3 wagons, 1 boat and trailer, 1 boat motor, dragging equipment, CB radio

Personnel training - First aid, miners course, self help

## Sanitation

### McCreary County

Type service	county government
Cost:	
residential	\$3 per month
business	varies
Collection frequency:	
residential	weekly
business	weekly
Disposal method	land fill

## HEALTH

### Hospitals

<u>General Hospital</u>	<u>Location</u>	<u>Beds</u>
Somerset City Hospital	Somerset - 34 miles	113

General hospital facilities - 5 operating rooms, recovery room, X-ray unit, laboratory, physical therapy, obstetrics section, nuclear scanning, training facilities for student nurses and certified laboratory assistant students, vocational training for nurses aides, orderlies and ward clerks

Medical staff - 24 doctors, 22 registered nurses, 34 graduate licensed practical nurses, 7 registered nurses (part-time)

### Nursing Homes

	<u>Number</u>	<u>Beds</u>
Personal care homes	1	49

### Public Health

Facility - McCreary County Health Department

Staff - 2 nurses, 1 sanitarian, 2 clerks, 1 nutritionist (part-time)

Budget - A five-county district health department (Lake Cumberland District Health Department) includes Clinton, Cumberland, McCreary, Pulaski, and Wayne Counties. Total budget for the district for 1971-72 was \$303,675.

## OTHER LOCAL FACILITIES

### Communications

Telephone - Highland Telephone Cooperative, Inc.  
Services - standard

Telegraph - Western Union (Stearns)  
Services - phone

Postal - U. S. Post Office  
Class - second  
Mail received - once daily  
Mail dispatched - once daily

Newspapers - McCreary County Record  
Weekly and circulation - 3,224  
Other papers received from - Louisville and Lexington, Kentucky;  
Knoxville, Tennessee

Radio -  
Stations received from - Monticello, Somerset, and Corbin, Kentucky;  
Oneida, Tennessee

Television -  
Reception from - Knoxville, Tennessee  
Educational Television - Channel 29, Somerset, Kentucky;  
Channel 2, Sneedville, Tennessee

### Religious Institutions

Number of churches - 50  
Denominations - Baptist, Christian (Disciples), Church of Christ,  
Congregational, Methodist, Seventh Day Adventist

### Financial Institutions

<u>Bank</u>	<u>Statement as of December 31, 1971</u>	
	<u>Assets</u>	<u>Deposits</u>
Bank of McCreary County	\$8,865,269.33	\$7,975,053.70

### Hotels and Motels

Number - 6  
Units - 211



### Clubs and Organizations

Business and Civic - McCreary County Development Association,  
Community Development, Farm Bureau, PTA

Fraternal - Masons, Lions, American Legion, Jaycees, Kiwanis

Women's - Eastern Star, Homemakers, Business and Professional  
Women's Club

Youth - 4-H, FFA, Boy Scouts, Girl Scouts, Little League, FHA, DECA,  
Career Club, Future Teachers, Young Democratic Club, Young  
Republican Club

Other - Saddle Club, Sportsmen's Club, Fox Hunters Club, Hiking Club

## RECREATION

### Local

#### Public Recreational Facilities

Supervised program - McCreary County Recreation Association

Swimming pool - 1

Golf course - 1

Baseball diamonds - 4

Football fields - 2

Other - McCreary County 4-H Camp

#### Private Recreation Facilities

Tennis court - 1

#### Tourist Attractions

Cumberland Falls, Yahoo Falls, 22 natural arches, 2 craft centers,  
29 miles of hiking trails, deer hunting

### Area (Within 25 miles)

Lake Cumberland General Burnside Island State Park

Cumberland Falls State Park

Daniel Boone National Forest

Rock Creek (stocked with trout)

# AGRICULTURE - NATURAL RESOURCES - CLIMATE

## Agriculture 13/

	<u>McCreary County</u>	<u>Labor Market Area</u>
Total land area (acres)	267,520	1,546,880
Percent of area in farm land	8.0	43.5
Number of farms	296	7,859
Average size of farms (acres)	72.3	85.6
1964 value of all farm products	\$649,554	\$20,004,924
Value per farm	2,194	2,545
Total crop sales	46,932	9,949,055
Total livestock & livestock products	602,622	10,047,396
1969 agricultural production included:		
Burley tobacco (lbs.)	59,000	13,656,000
Corn (bu.)	15,000	1,954,000
Cattle and calves (number)	2,400	102,900
Hogs and pigs (number)	800	30,900

## Natural Resources

Principal mineral resources	Coal, petroleum
Other mineral resources	Clay, shale, limestone, sand, and gravel
Acres of commercial forest land	248,200
Most abundant tree species	Yellow pine, white oak, red oak, hickory, yellow poplar, beech, and soft maple

## Climate 14/

	<u>McCreary County</u>
Temperature	
Annual mean (30-year record)	59.6 degrees
Average annual 1970	59.0 degrees
Record highest August, 1968 (10-year record)	99 degrees
Record lowest January, 1966 (10-year record)	- 9 degrees
Seasonal heating degree-days (30-year record)	3,494
Precipitation	
Mean annual total (30-year record)	45.85 inches
Mean annual snow and sleet (28-year record)	12.9 inches
Total precipitation 1970	43.43 inches
Mean number days precipitation (.01 inches or more) (28-year record)	126
Average number days thunderstorms (28-year record)	47
Prevailing winds (14-year record)	northeast



## HISTORY

McCreary County, the last county formed in the State, dates from 1912. Its territory was taken from Pulaski, Wayne, and Whitley Counties and covers 408 square miles.

McCreary County was named for James B. McCreary, who served for six years in the Legislature before becoming the chief executive of the state. He was one of five men who were elected twice to the governorship of Kentucky. After a gubernatorial term from 1875 to 1879, he was elected to the United States Congress for six consecutive terms. From 1903 to 1909 he was a United States Senator before becoming governor a second time.

With the building of Highway 27 in the 1940's, Whitley City, Stearns, and Pine Knot developed into progressive communities with modern schools, churches, and a new courthouse. The Southern Railway ran through the county before the 1940's, but it did not connect with many sections of it. Stearns was once the largest town in the county with over 2,000 people, but by 1966 its population was less than one-half its former size. Stearns was once the center of a thriving lumber industry, and is a shipping point for both coal and lumber today. These McCreary County towns lie in the foothills of the Cumberland Mountains. There is little arable land in the surrounding region except along the creek bottoms that empty into the Cumberland River which forms the northern part of its eastern boundary line. Most of the Cumberland River valley is narrow and rough. A portion of Cumberland Falls State Park is in McCreary County.

## SOURCES OF INFORMATION

- 1/ U.S. Department of Commerce, Bureau of the Census, Census of Population, 1950, 1960, 1970.
- 2/ Kentucky Department of Economic Security, Division of Research and Statistics.
- 3/ Kentucky Department of Economic Security, Number of Workers in Manufacturing Industries Covered by Kentucky Unemployment Insurance Law Classified by Industry and County, September 1971, September 1961.
- 4/ Kentucky Department of Commerce, 1972 Kentucky Directory of Manufacturers.
- 5/ Kentucky Department of Economic Security, Division of Employment Services, Somerset Office.
- 6/ Kentucky Department of Economic Security, Kentucky Labor Supply Estimates by County, January 1971.
- 7/ Kentucky Department of Commerce, Future Labor Supply by 1978.
- 8/ University of Kentucky, Office of Development Services and Business Research, Total Personal Income for Kentucky.
- 9/ University of Kentucky, Office of Development Services and Business Research, Per Capita Income in Kentucky.
- 10/ Southern Railway System, Louisville, Kentucky.
- 11/ Eagle Express Company, Inc., Somerset, Kentucky.
- 12/ Kentucky Department of Revenue, Kentucky Property Tax Rates, 1971.
- 13/ U.S. Department of Commerce, Bureau of the Census, Census of Agriculture, 1964. U.S. Department of Agriculture and Kentucky Department of Agriculture, Kentucky Agricultural Statistics, 1969.
- 14/ U.S. Department of Commerce, Environmental Science Services Administration, Climatological Data, 1970.

All other information was obtained from governmental offices, local businesses and organizations.