

1970

Industrial Resources: Scott County - Georgetown

Kentucky Library Research Collections
Western Kentucky University, spcol@wku.edu

Follow this and additional works at: https://digitalcommons.wku.edu/scott_cty



Part of the [Business Administration, Management, and Operations Commons](#), [Growth and Development Commons](#), and the [Infrastructure Commons](#)

Recommended Citation

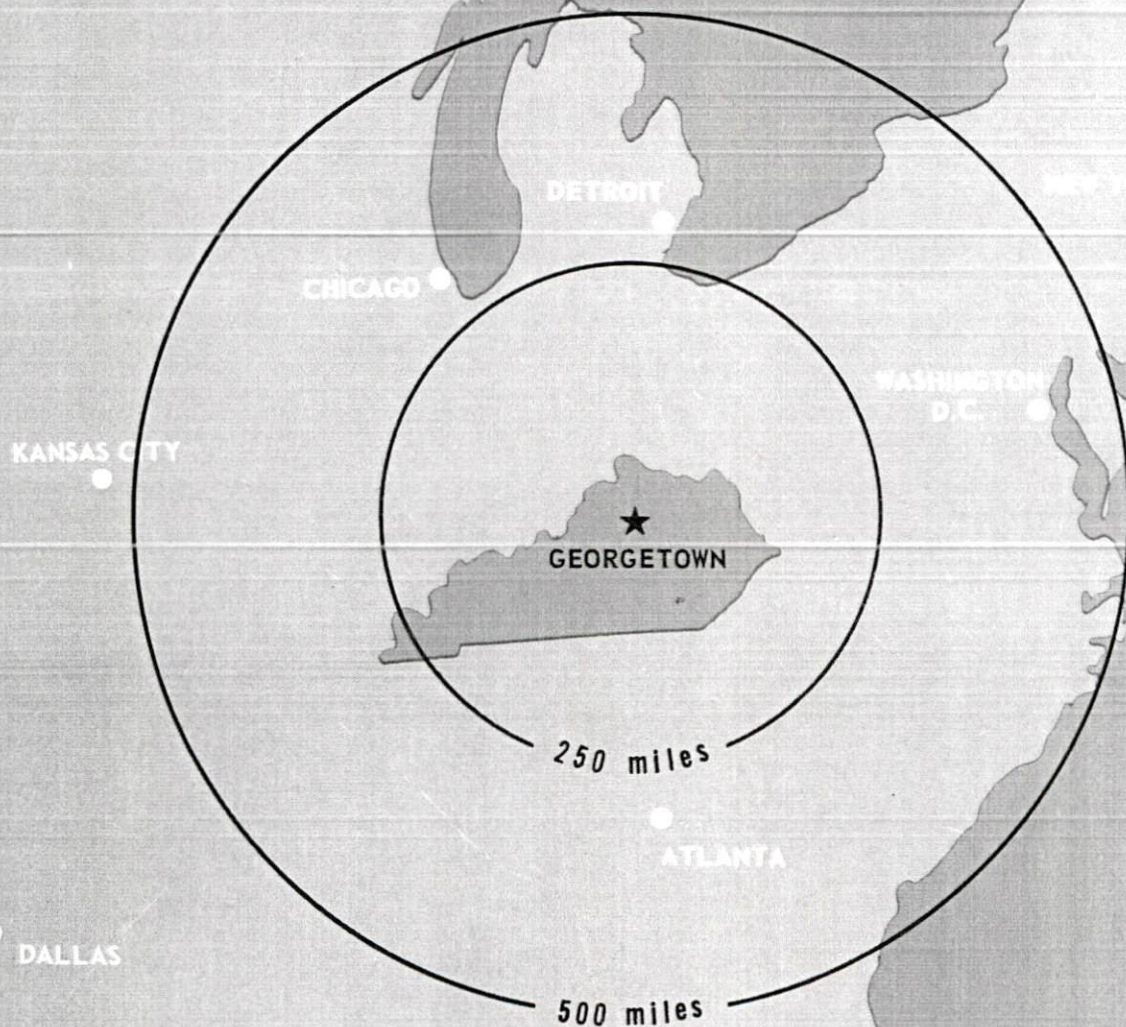
Kentucky Library Research Collections, "Industrial Resources: Scott County - Georgetown" (1970). *Scott County*. Paper 24.
https://digitalcommons.wku.edu/scott_cty/24

This Report is brought to you for free and open access by TopSCHOLAR®. It has been accepted for inclusion in Scott County by an authorized administrator of TopSCHOLAR®. For more information, please contact topscholar@wku.edu.

INDUSTRIAL RESOURCES

GEORGETOWN

KENTUCKY



GEORGETOWN INDUSTRIAL SITES

1970

GEORGETOWN INDUSTRIAL SITES

1970

Georgetown has 10 available industrial sites ranging in size from 3 to 465 acres. For more detailed information concerning the sites, contact Joe E. Johnson, Georgetown Improvement Company, Georgetown, Kentucky 40324, or the Kentucky Department of Commerce, Frankfort, Kentucky 40601.

SITE # 1: ACREAGE AND TOPOGRAPHY: 465 acres, gently rolling
LOCATION: One mile north on east side of U. S. 25
HIGHWAY ACCESS: U. S. 25
RAILROADS: Southern Railway System
WATER: Georgetown Municipal Water & Sewer Commission
SIZE LINE: 8-inch, 500 feet from site
GAS: Columbia Gas of Kentucky
SIZE LINE: 6-inch - medium pressure
ELECTRICITY: Kentucky Utilities Company
Voltage - 1,200 volts primary
SEWERAGE: None
OWNERSHIP: Private

SITE # 2: ACREAGE AND TOPOGRAPHY: 36 acres, level to gently rolling
LOCATION: On edge of northeast city limits, on Elkhorn Creek
HIGHWAY ACCESS: North Hamilton Street
RAILROADS: Southern Railway System
WATER: Georgetown Municipal Water & Sewer Commission
SIZE LINE: 10-inch
GAS: Columbia Gas of Kentucky
SIZE LINE: 6-inch - medium pressure
ELECTRICITY: Kentucky Utilities Company
Voltage - 1,200 volts primary
SEWERAGE: Georgetown Municipal Water & Sewer Commission
SIZE LINE: 8-inch
OWNERSHIP: Private

SITE # 3: ACREAGE AND TOPOGRAPHY: 12 acres, level
LOCATION: One-half mile north of city limits
HIGHWAY ACCESS: Degaris Mill Road
RAILROADS: None
WATER: West Scott County Water District
SIZE LINE: 8-inch, approximately 500 feet from site
GAS: Columbia Gas of Kentucky
SIZE LINE: 6-inch - medium pressure
ELECTRICITY: Kentucky Utilities Company
Voltage - 1,200 volts primary
SEWERAGE: Georgetown Municipal Water & Sewer Commission
SIZE LINE: 8-inch
OWNERSHIP: Private

SITE # 4: ACREAGE AND TOPOGRAPHY: 35 acres, gently rolling
LOCATION: Three-fourth mile north of city limits
HIGHWAY ACCESS: Immediately adjacent to I-75 Interchange on U. S. 62
RAILROADS: None
WATER: West Scott County Water District
SIZE LINE: 8-inch on site
GAS: Columbia Gas of Kentucky
SIZE LINE: 6-inch - medium pressure
ELECTRICITY: Kentucky Utilities Company
Voltage - 1,200 volts primary
SEWERAGE: Georgetown Municipal Water & Sewer Commission
SIZE LINE: 8-inch
OWNERSHIP: Private

SITE # 5: ACREAGE AND TOPOGRAPHY: 3 acres, rolling
LOCATION: One mile northeast of city limits
HIGHWAY ACCESS: U. S. 25 and I-75
RAILROADS: Not rail served - track will be removed
WATER: West Scott County Water District
SIZE LINE: 8-inch
GAS: Columbia Gas of Kentucky
ELECTRICITY: Kentucky Utilities Company
Voltage - 1,200 volts primary
SEWERAGE: Georgetown Municipal Water & Sewer Commission
SIZE LINE: 8-inch
OWNERSHIP: Private

SITE # 6: ACREAGE AND TOPOGRAPHY: 100 acres, level
LOCATION: 500 feet east of city limits
HIGHWAY ACCESS: Lemons Mill Road
RAILROADS: Southern Railway System
WATER: Georgetown Municipal Water & Sewer Commission
SIZE LINE: 10-inch, 500 feet from site
GAS: Columbia Gas of Kentucky
SIZE LINE: 3-inch - medium pressure
ELECTRICITY: Kentucky Utilities Company
SEWERAGE: Georgetown Municipal Water & Sewer Commission
SIZE LINE: 10-inch, 500 feet from site
OWNERSHIP: Private

SITE # 7: ACREAGE AND TOPOGRAPHY: 21 acres, level to gently rolling
LOCATION: Adjacent to east city limits
HIGHWAY ACCESS: Lemons Mill Road
RAILROADS: Southern Railway System
WATER: Georgetown Municipal Water & Sewer Commission
SIZE LINE: 10-inch, at property line
GAS: Columbia Gas of Kentucky
SIZE LINE: 3-inch - medium pressure
ELECTRICITY: Kentucky Utilities Company
Voltage - 1,200 volts primary
SEWERAGE: Georgetown Municipal Water & Sewer Commission
SIZE LINE: 10-inch, adjacent to site
OWNERSHIP: Private

SITE # 8: ACREAGE AND TOPOGRAPHY: 240 acres, level
LOCATION: Edge of southern city limits
HIGHWAY ACCESS: U. S. 25
RAILROADS: Southern Railway System
WATER: Georgetown Municipal Water & Sewer Commission
SIZE LINE: 10-inch at property line
GAS: Columbia Gas of Kentucky
SIZE LINE: 6-inch - medium pressure
ELECTRICITY: Kentucky Utilities Company
Voltage - 1,200 volts primary
SEWERAGE: Georgetown Municipal Water & Sewer Commission
SIZE LINE: 8-inch, pumping station at site
OWNERSHIP: Private

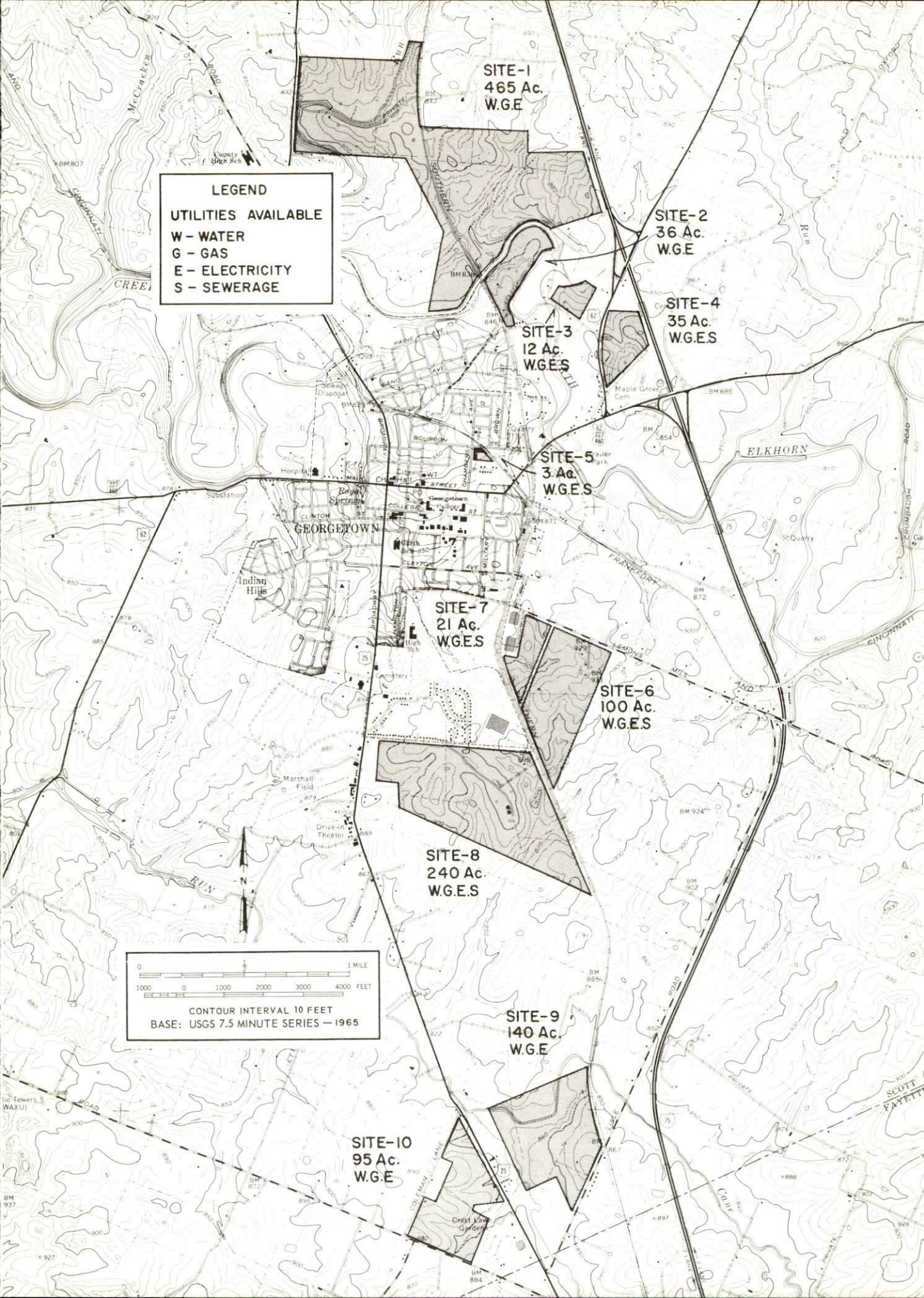
SITE # 9: ACREAGE AND TOPOGRAPHY: 140 acres, level to gently rolling
LOCATION: 2 1/2 miles south of Georgetown
HIGHWAY ACCESS: Lisle Road and U. S. 25
RAILROADS: Southern Railway System
WATER: West Scott County Water District
GAS: Columbia Gas of Kentucky
SIZE LINE: 6-inch - 200 lbs. pressure
ELECTRICITY: Kentucky Utilities Company
Voltage - 1,200 volts primary
SEWERAGE: None
OWNERSHIP: Private

SITE # 10: ACREAGE AND TOPOGRAPHY: 95 acres, level to gently rolling
LOCATION: 2 1/2 miles south of Georgetown, adjacent to U. S. 25 and Coleman Lane
HIGHWAY ACCESS: U. S. 25
RAILROADS: None
WATER: West Scott County Water District
GAS: Columbia Gas of Kentucky
SIZE LINE: 6-inch - 200 lbs. pressure
ELECTRICITY: Kentucky Utilities Company
Voltage - 1,200 volts primary
SEWERAGE: None
OWNERSHIP: Private

LEGEND

UTILITIES AVAILABLE

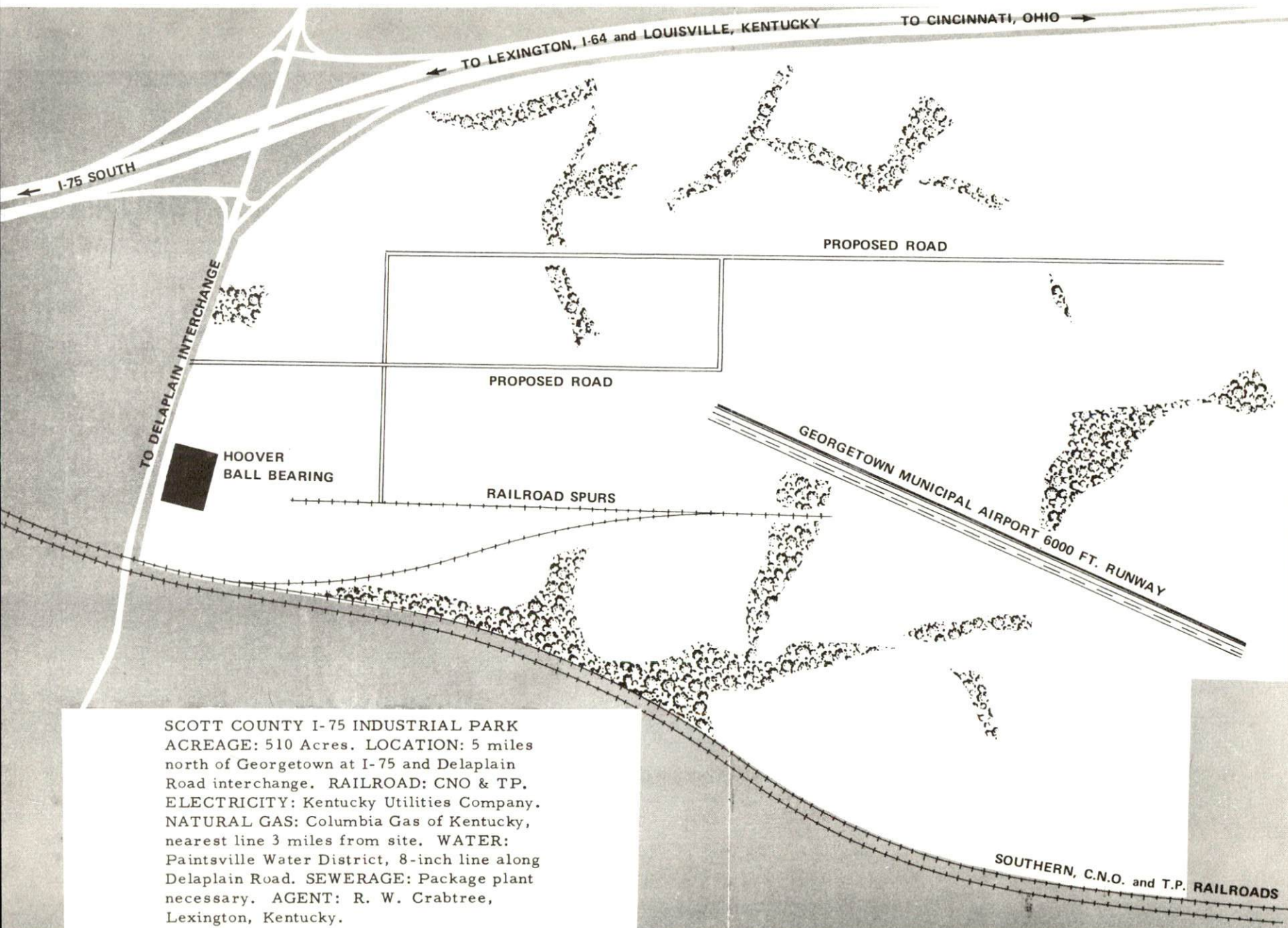
W - WATER
G - GAS
E - ELECTRICITY
S - SEWERAGE



0 1000 2000 3000 4000 FEET

1 MILE

CONTOUR INTERVAL 10 FEET
BASE: USGS 7.5 MINUTE SERIES - 1965



SCOTT COUNTY I-75 INDUSTRIAL PARK
ACREAGE: 510 Acres. LOCATION: 5 miles
north of Georgetown at I-75 and Delaplain
Road interchange. RAILROAD: CNO & TP.
ELECTRICITY: Kentucky Utilities Company.
NATURAL GAS: Columbia Gas of Kentucky,
nearest line 3 miles from site. WATER:
Paintsville Water District, 8-inch line along
Delaplain Road. SEWERAGE: Package plant
necessary. AGENT: R. W. Crabtree,
Lexington, Kentucky.

INDUSTRIAL RESOURCES
GEORGETOWN, KENTUCKY

Prepared by
The Kentucky Department of Commerce
in cooperation with
The Georgetown-Scott County Chamber of Commerce
1970

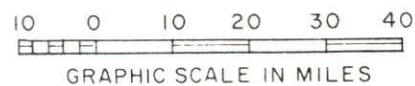
TABLE OF CONTENTS

<u>Chapter</u>	<u>Page</u>
INDUSTRIAL SITES	i
GEORGETOWN, KENTUCKY - A RESOURCE PROFILE	1
THE LABOR MARKET.	4
Population Trends	4
General Employment Characteristics, 1968	4
Manufacturing Employment Trends by Industry.	4
Georgetown Major Manufacturing Firms,	
Their Products and Employment	5
Wage Rates for Selected Occupations	5
Labor Organizations	6
Current and Future Labor Supply.	6
Total Personal Income	6
Per Capita Personal Income	6
EDUCATION	9
Public Schools	9
Parochial, Private and Special Schools	9
Vocational Schools	10
Colleges and Universities	10
TRANSPORTATION	13
Rail.	13
Truck Service	13
Air	14
Bus.	14
Taxi	14
Rental Services	14
POWER AND FUEL	15
Electricity.	15
Natural Gas	15
WATER AND SEWERAGE	16
Water.	16
Sewerage	16

<u>Chapter</u>	<u>Page</u>
LOCAL GOVERNMENT	17
City	17
County.	17
Assessed Value of Property - 1969	17
Local General Property Tax Rates Per \$100 of Assessed Valuation - 1969	17
Planning and Zoning.	17
Safety	18
Police	18
Fire	18
Sanitation	18
HEALTH	19
Hospitals	19
Nursing Homes.	19
Public Health.	19
OTHER LOCAL FACILITIES	20
Communications	20
Library Services	20
Religious Institutions	21
Financial Institutions	21
Hotels and Motels.	21
Clubs and Organizations.	21
RECREATION.	22
Local	22
Area	22
AGRICULTURE - NATURAL RESOURCES - CLIMATE	23
Agriculture	23
Natural Resources	23
Climate	23
HISTORY.	24

GEORGETOWN LABOR MARKET AREA

*Shaded area denotes labor market area



GEORGETOWN, KENTUCKY - A RESOURCE PROFILE

Location

Georgetown, an attractive college town, is located in Scott County in the famed Bluegrass Region of Kentucky. The Bluegrass, long famed in story and song for its Thoroughbred horses and beautiful farms, is emerging as an important industrial, educational, and research area. Growth - spearheaded by manufacturing but extending throughout the economy - has been a Bluegrass trademark during the decade of the sixties. Located only 12 miles north of Lexington, 75 miles south of Cincinnati, and 75 miles east of Louisville, Georgetown combines small town livability with quick access to the advantages of major metropolitan areas.

The Economic Framework

Total employment in Scott County averaged 5,975 in 1968 with manufacturing providing almost 1,350 of these jobs. During the first nine years of the decade, manufacturing employment increased by 465 jobs or 52.4 percent. Major industrial products manufactured in Georgetown include auto seat springs, furniture springs, power cords, cord sets, electrical wire, and ball point pens.

Per capita income in the county in 1968 was \$2,303 as compared to \$1,517 in 1959. The change represents a 51.8 percent increase.

Georgetown is the hub of a labor market area that includes Scott and seven other counties. Total area employment in 1968 averaged 140,610. Manufacturing furnishes 27,690 jobs. Since 1959 industrial employment has increased 67 percent with the sharpest gains in machinery and metal products industries.

Despite important industrial gains in recent years the area still has a deficit of 683 manufacturing jobs when measured against the national industrial employment-population ratio. This indicates an area where the potential for additional manufacturing is good.

Resources for Growth

1. There is a current estimated labor supply of 2,585 men and 2,565 women in the labor market area available for industrial jobs. In addition, 12,340 young men and 12,050 young women will become 18 years of age by 1976 and potentially available for work.

2. The local transportation capability is good. One railroad provides Georgetown with a variety of services. There is easy access to Interstate 75 - only 2 miles distant. Interstate 75 is a major highway artery into the industrial north and south, and an access to the eastern and western markets of the nation.

3. Energy - both gas and electricity - is available in large quantities. The local water supply comes from Royal Spring with Elkhorn Creek providing an alternate supply of raw water at the Elkhorn Creek Dam. Consequently, the raw water supply is adequate for continued growth.

4. Industrial sites - Georgetown has ten available industrial sites.

5. Education - There are two school systems - county and independent.

Eight senior colleges are within 50 miles of Georgetown, including the University of Kentucky and Transylvania University, both only 12 miles away in Lexington. Eastern Kentucky University is only 32 miles distant. And, at Georgetown is Georgetown College, the first Baptist college west of the Alleghenies, founded in 1829.

Georgetown is a liberal arts college offering a masters degree. Students from 35 states and 9 foreign countries attend it. The campus is a 52-acre expanse with facilities of varied architecture. Several new facilities have been constructed in recent years enabling the school to stay abreast of modern education.

Community Improvements

Community improvements recently completed or underway include a new city park covering 10 acres and costing approximately \$250,000. The park has a junior Olympic swimming pool, two baseball diamonds, two basketball courts, one volleyball court, ten horseshoe pits, and a playground area.

The city is lighted by 4,000 new mercury vapor street lights.

Several businesses have renovated the fronts of their buildings giving the city a new look.

A new police cruiser has been ordered, and new radio systems have been ordered for the city police and the county sheriff's department.

The Great Crossing Water District is ready to begin construction and should be completed by the Summer of 1971. It will serve the western half of Scott County.

The relocation of Marshall Field is almost out of the planning stage. The site selected for the airport is 4 1/2 miles from Georgetown in the I-75 interchange area. The new airport will have a 5,000-foot paved runway.

The City of Georgetown intends to annex additional property north-east of the city and extend all utilities to the area.

Plans are being considered to either construct a joint city-county building or to renovate the old courthouse.

An addition of 84 units to the present housing project has been approved, and construction is scheduled to begin in 1971.

Serious consideration has been given to the construction of a reservoir for additional raw water storage.

For added recreation, Georgetown plans to develop a 20-acre tract for a picnic area.

Recreation, Entertainment and Livability

Recreation in the Georgetown area is varied and plentiful - boating and fishing in the Kentucky River and Herrington Lake - sight-seeing in the State Capital City, Frankfort - visiting the many world-famous horse farms.

Lexington boasts two fine race tracks - Keeneland Race Course and the Big Red Mile Trotting Track. Louisville has Churchill Downs and the spectacular Kentucky Derby, Louisville Downs, and Miles Park.

Intercollegiate athletic competition is found at Georgetown College, the University of Kentucky, and the University of Louisville. Major league sports may be found in Cincinnati, Ohio - home of the baseball Reds, the basketball Royals, and the football Bengals.

Cultural offerings in the area include Centennial Theater at Lexington, Actors' Theater and a symphony orchestra at Louisville, and the summer opera at Cincinnati.

THE LABOR MARKET

POPULATION TRENDS ^{1/}

Area	Population			Percent Change	
	1970	1960	1950	1960-70	1950-60
Georgetown	8,739	6,986	5,516	+25.1	+26.6
Labor Market Area	286,597	238,224	204,084	+20.3	+16.7
Scott County	18,073	15,376	15,141	+17.5	+ 1.6
Bourbon County	18,035	18,178	17,752	- 0.8	+ 2.4
Fayette County	172,927	121,906	100,746	+31.1	+30.9
Franklin County	32,749	29,421	25,933	+11.3	+13.5
Grant County	9,485	9,489	9,809	--	- 3.3
Harrison County	13,959	13,704	13,736	+ 1.9	- 0.2
Owen County	7,248	8,237	9,755	-12.0	-15.6
Woodford County	14,121	11,913	11,212	+18.5	+ 6.3

GENERAL EMPLOYMENT CHARACTERISTICS, 1968 ^{2/}

Major Employment Group	Employment	
	Scott County	Labor Market Area
TOTAL	5,977	140,610
Agricultural	1,419	11,602
Nonagricultural	4,558	129,008
Manufacturing	1,344	25,656
Trade and Services	1,270	36,666
Government	590	35,573

MANUFACTURING EMPLOYMENT TRENDS BY INDUSTRY SEPTEMBER 1959 AND 1969 ^{3/}

Industry	Scott County			Labor Market Area		
	1969	1959	% Change	1969	1959	% Change
TOTAL	1,353	888	+ 52.4	27,690	16,526	+ 67.6
Food & kindred products	14	35	- 60.0	2,634	3,588	- 26.6
Tobacco	1	2	- 50.0	989	1,362	- 27.4
Apparel, textiles, leather	0	0	--	3,355	2,071	+ 62.0
Lumber & furniture	2	0	--	155	214	- 27.6
Printing, publishing, paper	12	8	+ 50.0	2,277	771	+195.3
Chemicals, petroleum, coal, rubber	100	23	+334.8	1,325	231	+473.6
Stone, clay, glass	0	0	--	457	609	- 25.0
Primary metals	166	0	--	331	0	--
Machinery & metal products	921	637	+ 44.6	13,457	7,392	+ 82.0
Other	137	183	- 25.1	2,710	288	+841.0

GEORGETOWN MAJOR MANUFACTURING FIRMS,
THEIR PRODUCTS AND EMPLOYMENT ^{4/}

Firm	Product	Employment		
		Total	Male	Female
Blue Ribbon Pen & Pencil Co., Inc.	Imprinted pens	53	8	45
Carbide Products, Inc.	Carbide tools, accessories	72	51	21
Electric Parts Corp.	Power cords, cord sets electrical wire, wiring harness	241	118	123
Georgetown Cable Products, Inc.	Electronic wiring, components	95	48	47
Georgetown Industries	Ball point pens	58	5	53
Hydro Plastic Co.	Typewriter parts	65	20	45
Kentucky Die Casting Corp.	Aluminum die casting	65	64	1
Mallard Pen & Pencil Co., Inc.	Ball point pens	160	35	125
Stiohn Products Corp	Special machines	51	12	39
Universal Wire Spring, Div. of Hoover Ball & Bearing Co.	Auto seat springs, furniture springs	483	465	18

WAGE RATES FOR SELECTED OCCUPATIONS
GEORGETOWN, KENTUCKY ^{5/}

Classification	Wages Per Hour		
	Starting	Maximum	Prevailing
<u>Production Employees</u>			
Assembler	\$1.65	\$1.80	\$1.75
Inspector	1.75	2.50	2.15
Production Laborer	2.40	2.80	2.60
Welder, Arc or Acetylene (Class-A)	2.75	3.25	3.00
<u>Service Employees</u>			
Electrician (Class-A)	\$3.00	\$4.00	\$3.50
Laborer	2.40	2.65	2.50
Mechanic, Maintenance	2.75	3.25	3.00
Truck Driver, Industrial (Class-A)	2.50	3.50	3.00
(contd.)			

Classification	Wages Per Hour		
	Starting	Maximum	Prevailing
<u>Office Employees</u>			
Bookkeeper	\$1.75	\$2.25	\$2.00
File Clerk	1.60	2.00	1.75
Receptionist	1.75	2.25	2.00
Secretary	1.75	2.50	2.10
Typist	1.60	2.00	1.75

LABOR ORGANIZATIONS

<u>Union</u>	<u>Representing Workers at:</u>
Electrical Workers	Electric Parts Corp.
International Association of Machinists	Kentucky Die Casting Co.

CURRENT AND FUTURE LABOR SUPPLY, GEORGETOWN LABOR MARKET AREA

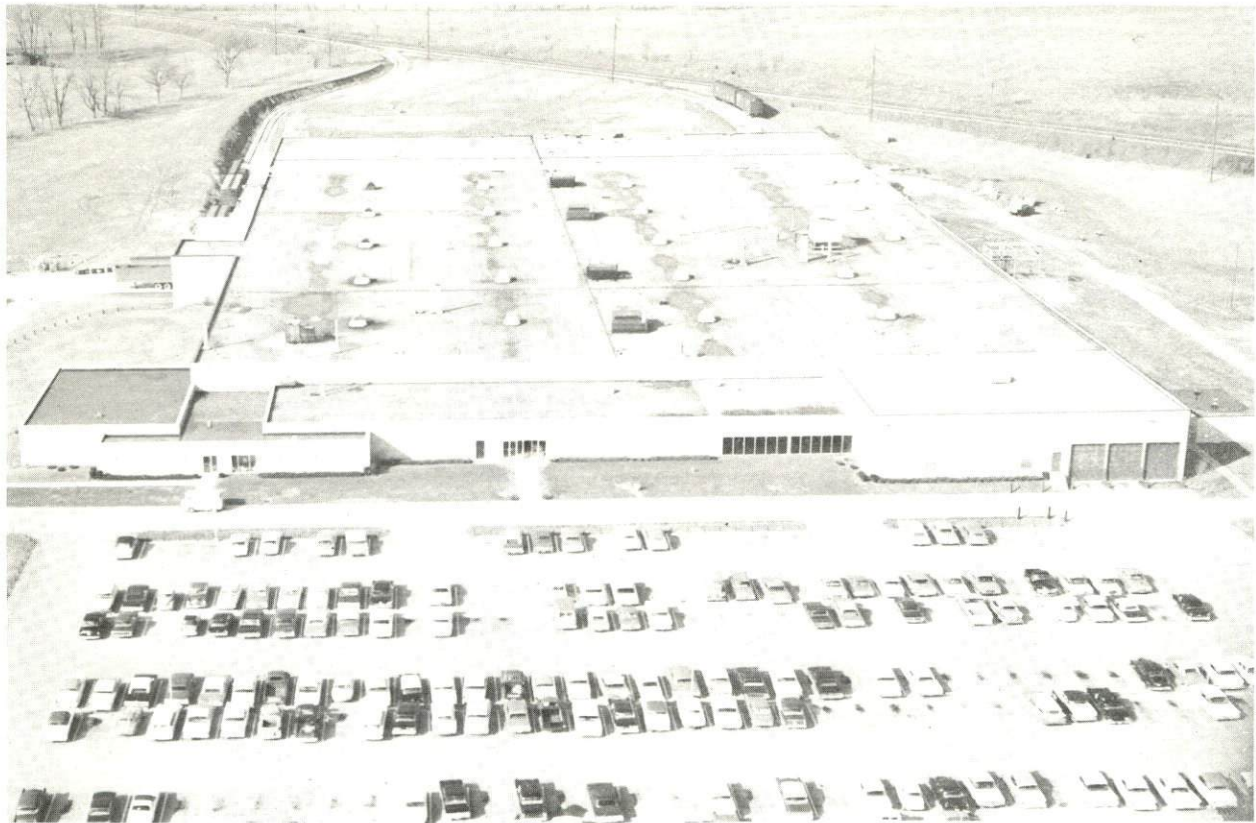
County	1970			Future Labor Supply by 1976 ^{7/}		
	Current Labor Supply ^{6/}			(Becoming 18 Years of Age)		
	Total	Male	Female	Total	Male	Female
Labor Market Area	5,145	2,583	2,562	24,391	12,338	12,053
Scott	583	281	302	1,458	746	712
Bourbon	537	150	387	1,835	908	927
Fayette	1,884	1,059	825	14,053	7,123	6,930
Franklin	605	410	195	2,734	1,377	1,357
Grant	420	146	274	943	498	445
Harrison	434	183	251	1,322	652	670
Owen	469	275	194	776	381	395
Woodford	213	79	134	1,270	653	617

TOTAL PERSONAL INCOME ^{8/}

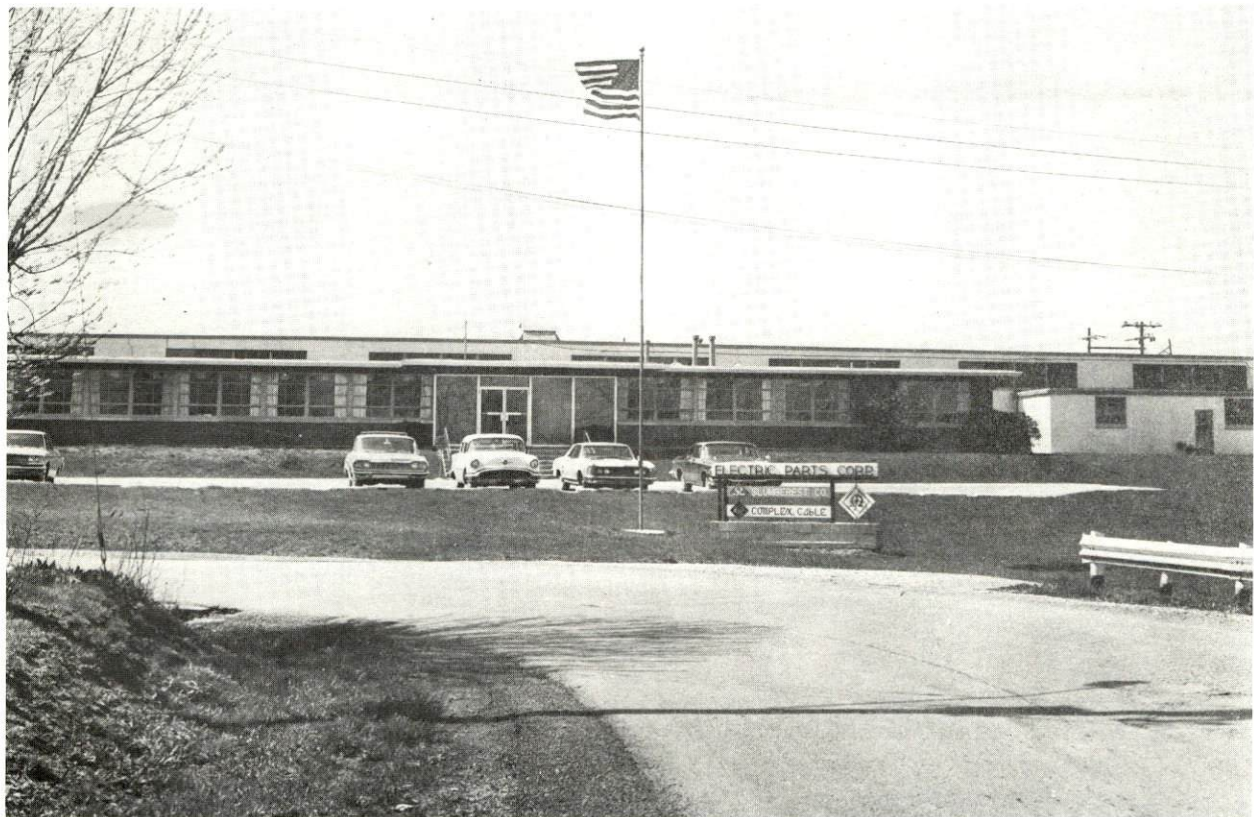
Area	1968	1959	% Change
Scott County	\$ 39,829,000	\$ 21,218,000	+ 87.7
Labor Market Area	917,462,000	420,509,000	+118.2
Kentucky	8,516,000,000	4,655,000,000	+ 82.9

PER CAPITA PERSONAL INCOME ^{9/}

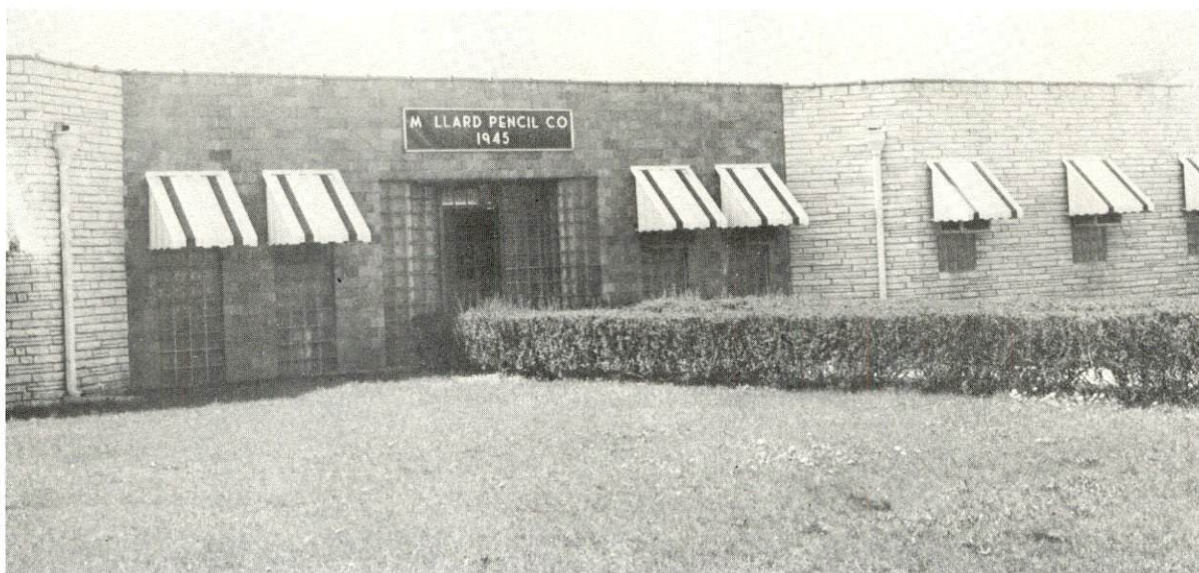
Area	1968	1959	% Change
Scott County	\$2,303	\$1,517	+51.8
Labor Market Area	\$1,820 to 3,252	\$1,154 to 1,954	+57.7 to +66.4
Kentucky	2,645	1,552	+70.4



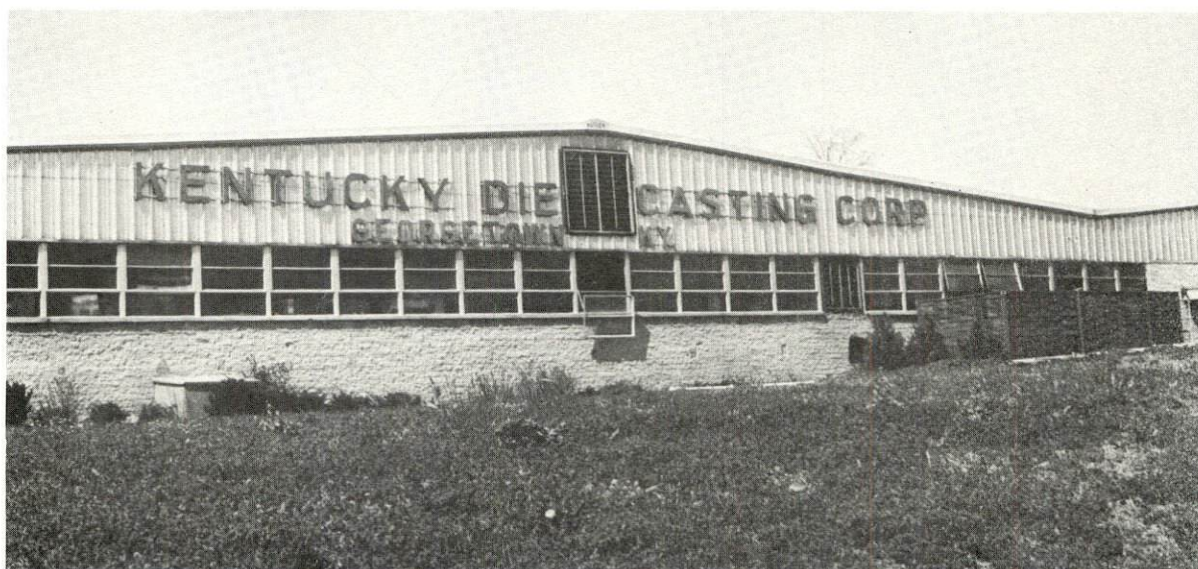
UNIVERSAL WIRE SPRING DIVISION
HOOVER BALL & BEARING CO.



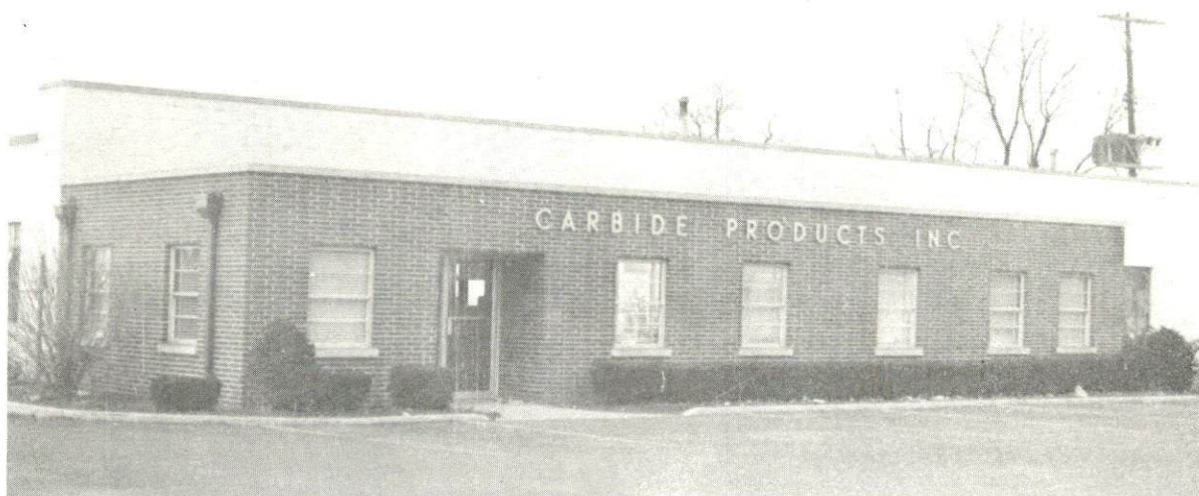
ELECTRIC PARTS CORP.



MALLARD PEN & PENCIL COMPANY, INC.



KENTUCKY DIE CASTING CORP.



CARBIDE PRODUCTS, INC.

EDUCATION

Public Schools

	<u>Georgetown Independent</u>	<u>Scott County</u>
Total Enrollment	994	2,916
Elementary	536	1,657
Junior High		718
High School	458	541
Student-Teacher Ratio	21-1	21-1
Elementary	21-1	20-1
Junior High		23-1
High School	20-1	19-1
State Rating of High School	Standard	Standard
Other Accreditations	Southern Associa- tion of Colleges and Schools	
Percent High School		
Graduates to College	51.0	33.3
Current Expenditures Per Pupil	\$425.41	\$458.01
Bonded Indebtedness, as of		
June 30, 1969	\$505,000	\$1,542,000

Parochial, Private and Special Schools

	<u>Parochial</u>
Total Enrollment	33
Elementary	33
Student-Teacher Ratio	11-1
Elementary	11-1

Vocational Schools

	<u>Nearest Area School</u>
Location	Lexington
Miles Distant	12
Curriculum	Auto Body Repair Auto Mechanics Electronics (Communication) Practical Nursing Radio and TV Repair Tool and Die Design Data Processing General Clerical Secretarial -Steno Distributive Education Commercial Foods Drafting Electricity Machine Shop Office Machine Repair Printing Sheet Metal Welding

Colleges and Universities

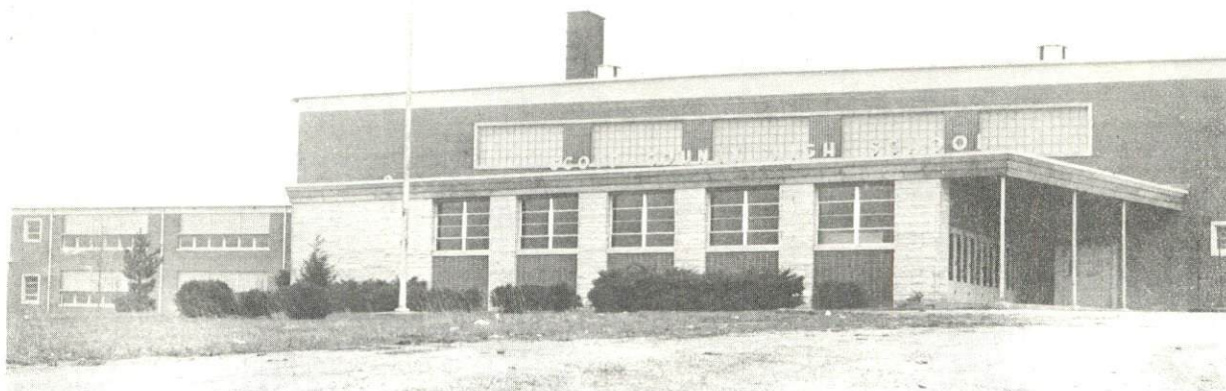
<u>Name</u>	<u>Area - Within 50 Miles</u>		<u>Highest Degree Conferred</u>
	<u>Location</u>	<u>Enrollment</u>	
Georgetown College	Georgetown	1,445	Masters
Kentucky State College	Frankfort	1,620	Baccalaureate
University of Kentucky	Lexington	16,161	Ph.D., M.D., D.M.D., J.D.
Transylvania University	Lexington	878	Masters
Asbury College	Wilmore	1,032	Baccalaureate
Eastern Kentucky University	Richmond	9,664	Masters
Centre College	Danville	749	Baccalaureate
Berea College	Berea	1,399	Baccalaureate
Midway Junior College	Midway	212	Associate



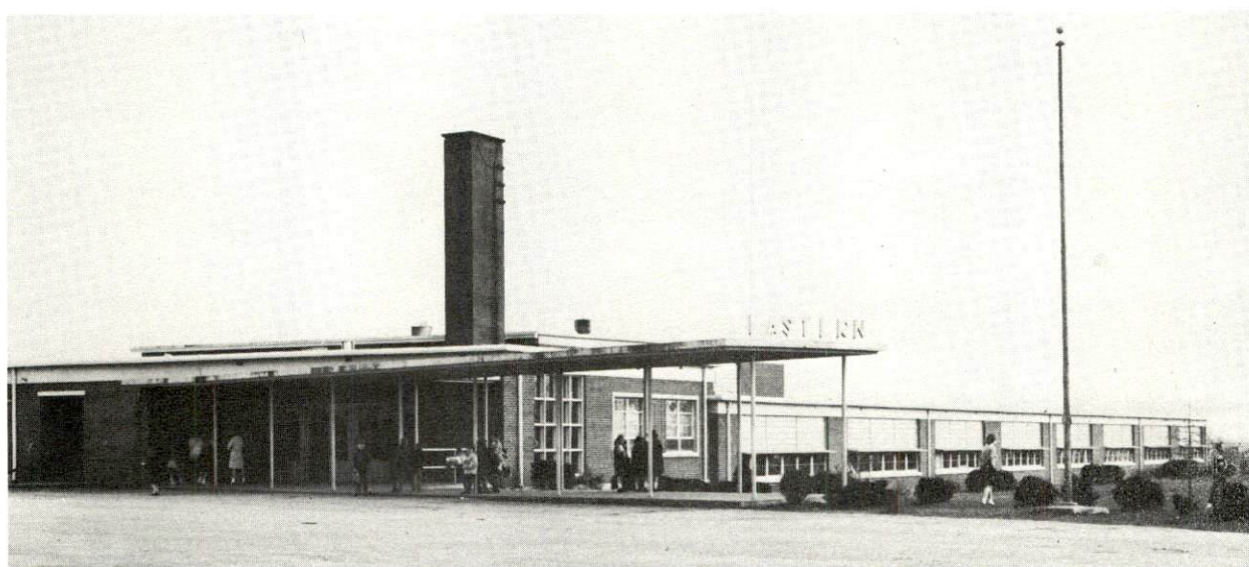
GARTH ELEMENTARY SCHOOL



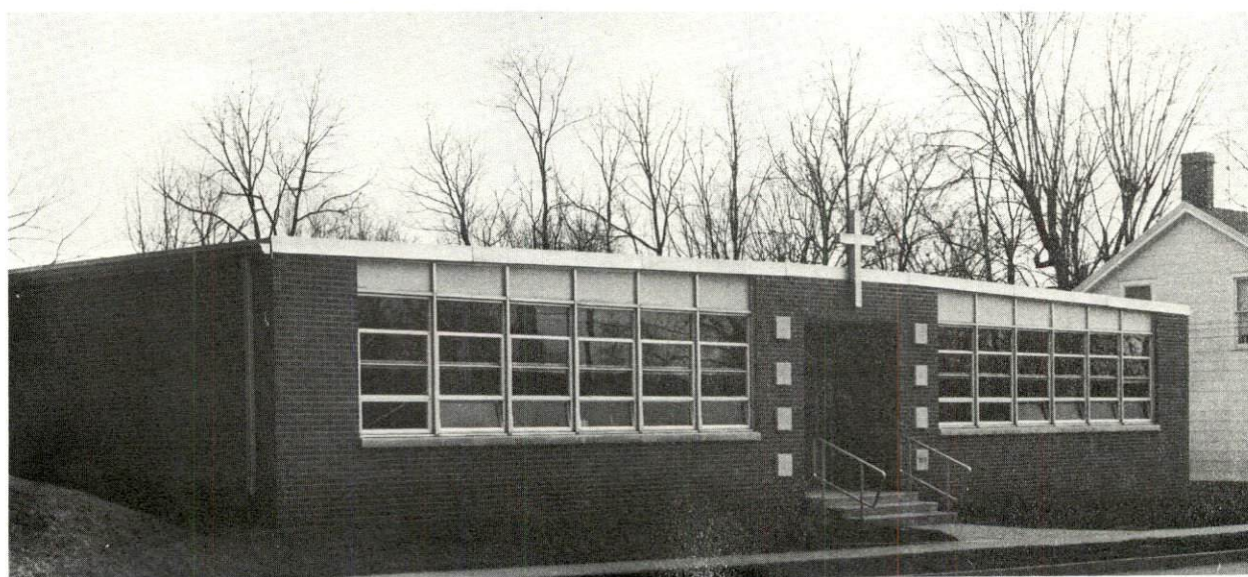
GEORGETOWN HIGH SCHOOL



SCOTT COUNTY HIGH SCHOOL



EASTERN ELEMENTARY SCHOOL



ST. JOHN SCHOOL

TRANSPORTATION

Rail

Line serving - Southern Railway System

Services - Two local freights daily, passenger daily, siding, switching

RAILWAY TRANSIT TIME FROM GEORGETOWN, KENTUCKY, TO: ^{10/}

City	No. of Days		City	No. of Days	
	CL			CL	
Atlanta, Ga.	2		Los Angeles, Calif.	6	
Birmingham, Ala.	2		Louisville, Ky.	2	
Chicago, Ill.	3		Nashville, Tenn.	3	
Cincinnati, Ohio	1		New Orleans, La.	3	
Cleveland, Ohio	3		New York, N. Y.	5	
Detroit, Mich.	3		Pittsburgh, Pa.	4	
Knoxville, Tenn.	2		St. Louis, Mo.	3	

Truck Service

Company

Home Office

Ecklar-Moore Express, Inc.	Lexington, Kentucky
McLean Trucking Co.	Winston-Salem, North Carolina
Dixie Ohio Express, Inc.	Akron, Ohio
Motor Freight Corp.	Terre Haute, Indiana
Wilson Freight Co.	Cincinnati, Ohio
Consolidated Freightways	Chicago, Illinois

HIGHWAY MILES AND TRUCK TRANSIT TIME IN DAYS FROM GEORGETOWN, KENTUCKY, TO SELECTED MARKET CENTERS

City	Highway Miles	Delivery Time ^{11/}		City	Highway Miles	Delivery Time	
		LTL	TL			LTL	TL
Atlanta, Ga.	398	3	2	Los Angeles, Calif.	2,174	6	5
Birmingham, Ala.	420	3	2	Louisville, Ky.	75	Overnight	
Chicago, Ill.	366	2	1	Nashville, Tenn.	222	2	1
Cincinnati, Ohio	75	Overnight		New Orleans, La.	776	3	2
Cleveland, Ohio	319	2	1	New York, N. Y.	721	3	2
Detroit, Mich.	340	2	1	Pittsburgh, Pa.	359	2	1
Knoxville, Tenn.	207	2	1	St. Louis, Mo.	332	2	1

Air

	<u>Local</u>	<u>Nearest Commercial</u>
	Marshall Field	Blue Grass Field
Location:	1 mile south of Georgetown	Lexington, Kentucky, 12 miles
Runways:	1 turf	3 paved
Length:	1,800 feet	6,500 feet; 3,500 feet; 3,500 feet
Traffic		
Control:	Wind sock	Tower, guards, approach control, ground control, ILS system
Lighting:	None	Approach lighting system, beacon, runways and obstruction lighted
Services:	80-100 octane, A & E repairs, tie down, taxi, charter, flight instructions	80-100-145 octane; jet fuel; major A & E repairs; storage; taxi; restaurant; Eastern, Delta, Piedmont, Allegheny Airlines; Buckeye Airlines (freight only)

Bus

Southern Greyhound Bus Lines

Taxi

One company - operating from 5:30 a.m. to midnight

Rental Services

Lexington, Kentucky, 12 miles

POWER AND FUEL

Electricity

Company serving - Kentucky Utilities Company
Source of power - Kentucky Utilities Company
Total generating capacity - 740,000 KW
Industrial rates negotiated by - Kentucky Utilities Company,
Lexington, Kentucky

Companies serving Scott County - Harrison County RECC, Owen County
RECC
Source of power - East Kentucky Power Cooperative
Total generating capacity - 515,000 KW
Industrial rates negotiated by - Harrison County RECC, Cynthiana,
Kentucky

Natural Gas

Company serving - Columbia Gas of Kentucky
Source of supply - Kentucky Gas Transmission Corporation
Size of transmission lines - 6-inch; distribution lines - 2 to 10 inches
BTU content - 1,020
Specific gravity - .065
Distribution pressure - varies

Rates may be obtained by contacting the Georgetown office, or Industrial
Sales Department, 166 Walnut Street, Lexington, Kentucky 40501.

WATER AND SEWERAGE

Water

Company serving - Georgetown Municipal Water and Sewer Commission
Source - Royal Spring, Elkhorn Creek
Treatment plant capacity - 1,500,000 gpd
Average daily consumption - 940,000 gallons
Peak daily consumption - 1,240,000 gallons
Type treatment - lime, alum, chlorine
Storage capacity - 450,000 gallons
Average pressure - 62 to 72 psi
Average temperature - 56+° F.
Size mains - 8, 6, and 4 inches

MONTHLY WATER RATES FOR WHOLESALE AND INDUSTRIAL CONSUMERS

First	600 cubic feet	50¢ per 100 cubic feet
Next	1,100 cubic feet	40¢ per 100 cubic feet
Over	1,700 cubic feet	20¢ per 100 cubic feet

Surface water sources - North Fork of Elkhorn Creek
Expected ground water yield - south half 5 to 50 gpm; north half 5 gpm
or less
Yield along main streams - in alluvium of North Fork of Elkhorn Creek
to 300 gpm

Sewerage

Company serving - Georgetown Municipal Water and Sewer Commission
Design capacity - 1,250,000 gpd
Average daily flow - 900,000 gallons
Treatment - Primary and secondary
Type treatment - Digester, drying beds, trickling filter
Treated effluent discharged into - Elkhorn Creek
Size of sanitary mains - 18 to 24 inches
Size of storm mains - 30-inch
Rates - 75 percent of monthly water bill plus 5 percent Kentucky Sales
Tax

LOCAL GOVERNMENT

City

Structure - Mayor - 4-year term; 8 councilmen - 2-year terms
Budget 1970 - General Fund \$307,000; Water and Sewer Fund \$245,574
Fees and licenses - \$10 vehicle tax sticker; occupational license - set fees, minimum rate or pay on gross receipts - whichever is greater

County

Structure - County Judge - 4-year term; 3 commissioners - 4-year terms
Budget 1969-70 - General Fund \$218,500; Road Fund \$74,500

Assessed Value of Property - 1969

<u>Classes of Property*</u>	<u>Georgetown</u>	<u>Scott County</u>
Real Estate	\$28,226,935	\$93,361,380
Tangibles	4,295,094	18,173,205
Public Service	2,789,606	12,060,716

Local General Property Tax Rates Per \$100 of Assessed Valuation - 1969 ^{12/}

<u>Taxing Unit**</u>	<u>Georgetown</u>	<u>Scott County</u>
State	\$.015	\$.015
County	.253	.253
School	.662	.540
City	.214	
Total	\$1.144	\$.808

Planning and Zoning

Agency - Scott County Planning Commission
Plans completed - General Plan, Zoning Ordinance, Subdivision Regulations
Codes adopted - all major codes

*Property assessed at 100 percent of fair value.

**Manufacturing machinery, raw materials inventories and goods in process inventories are not subject to local tax. State rate is only \$.15 per \$100.

Safety

Police

Total staff

Radio-patrol cars

Georgetown

10 regular
12 auxiliary

2

Scott County

7 part-time

2 private

Fire

American Insurance

Association Fire Rating

Staff

7

12 regular

15 auxiliary

Equipment:

1,000 gpm pumpers

1

750 gpm pumpers

1

600 gpm pumpers

1

500 gpm pumpers

1

250 gpm pumpers

2

300 gpm pumpers

1

Other

1

2 equipped pick-up
trucks

1 combination station
wagon-ambulance,
boat and trailer for
rescue

Sanitation

Georgetown

Type service

municipal

Cost:

business

\$6, 10, 15 monthly

residential

\$3 monthly

Collection frequency:

business

daily

residential

weekly

Trash pickup

with garbage collection

Disposal method

land fill

HEALTH

Hospitals

	<u>Number</u>	<u>Beds</u>
General hospital	1	56
General hospital facilities - 2 laboratories, EKG, nursery, emergency room, operating rooms, obstetrical and delivery rooms, diagnostic X-ray, inhalation therapy department, intensive-coronary care		
Medical staff - 8 doctors, 15 registered nurses, 11 licensed practical nurses		

Nursing Homes

	<u>Number</u>	<u>Beds</u>
Extended care home	1	50
Personal care home	1	10

Public Health

Facility - Scott County Health Department

Staff - 3 registered nurses, sanitarian, clerk, health officer (part-time)

Budget 1969-70 - \$51,861

OTHER LOCAL FACILITIES

Communications

Telephone - South Central Bell Telephone Company

Services - Touch tone dialing, auto machine accounting, direct distance dialing

Telegraph - Western Union

Services - Monday through Saturday - 8 a.m. to 8 p.m.

Postal - First-class U. S. Post Office

Mail received - twice daily

Mail dispatched - twice daily

Newspaper weeklies - Georgetown Times - Georgetown News - Graphic

Circulation - 2,000 - 2,400 - 2,010

Radio - WAXU, Georgetown College FM Station

Stations received from - Lexington and Louisville, Kentucky; and Cincinnati, Ohio

Television -

Reception from Lexington and Louisville, Kentucky; and Cincinnati, Ohio

Kentucky Educational Television - Lexington transmitter, Channel 46; Owenton transmitter, Channel 52

Library Services

Public library - Scott County Public Library

Size of collection - 34,789 volumes

Circulation, 1969 - 168,603

Services - Children's hour, films, records, pictures, magazines, bookmobile, pamphlets, telephone reference, inter-library loans, Xerox and copying service, projectors and screens loaned

Private library - Cooke Memorial Library, Georgetown College

Size collection - 99,300 volumes

Special collections - rare bibles

Services - Theological library, 1,100 periodicals, New York Times on microfilm to 1953, 2 microfilm reader-printers, selected recordings, newspapers, Xerox machine, films, pictures

Religious Institutions

Number of churches - 13

Denominations - Baptist, Catholic, Christian, Episcopal, Methodist, Nazarene, Presbyterian, Church of God, Church of Christ

Financial Institutions

<u>Bank</u>	<u>Statement as of December 31, 1969</u>	
	<u>Assets</u>	<u>Deposits</u>
First National Bank & Trust Co.	\$17,831,440.77	\$16,038,766.95
Farmers Bank & Trust Co.	10,965,319.83	10,017,361.76

Hotels and Motels

<u>Number</u>	<u>Units</u>
5	49

Clubs and Organizations

Business and Civic - Georgetown-Scott County Chamber of Commerce, Scott County Junior Chamber of Commerce, Kiwanis International Club, Georgetown Citizen's Advisory Committee, Rotary International Club, Optimist Club, Sadieville Lions Club, Ruritan National Club, Scott County Bar Association, Georgetown Improvement Company, Scott County Development Association

Fraternal - American Legion, Veterans of Foreign Wars, IOOF, Masons

Women's - American Legion Auxiliary, Women's Christian Temperance Union, Town and County Garden Club, Stamping Ground Woman's Club, Georgetown Junior Woman's Club, Scott County Woman's Club, Daughters of American Revolution, Scott County Homemakers, Scott County Business and Professional Women's Club, VFW Auxiliary, Eastern Star

Youth - Boy Scouts of America, Girl Scouts of America, Future Farmers of America, Future Homemakers of America, Little League Football, Little League Baseball, Little League Basketball

RECREATION

Local

Public Recreation Facilities

Supervised program - yes
Parks - 2
Playground - 1
Swimming pool - 1
Tennis courts - 2
Baseball diamonds - 3
Football fields - 3

Private Recreation Facilities

Golf course - 1
Swimming pool - 1
Movie theater - 1 drive-in
Bowling lane - 1
Other - miniature golf

Cultural Events

Georgetown College offers a variety of dramatic and musical presentations each year. The college planetarium is available for groups to tour by special arrangement. The Central Kentucky Philharmonic Orchestra presents five local concerts a year and features artists of national prominence. The Central Kentucky Concert and Lecture Series, Lexington, presents concerts and lectures annually.

Area (Within 25 miles)

Historical buildings and museums are in Frankfort, 15 miles distant. There are many famous horse farms in the Georgetown-Lexington area. Boating, swimming, and fishing enthusiasts can enjoy the Kentucky River, only 18 miles away. Horse racing is famous in nearby Lexington where there are two tracks: Keeneland and the Big Red Mile. Major intercollegiate sports are available in Lexington in addition to the college sports offered at Georgetown College.

AGRICULTURE - NATURAL RESOURCES - CLIMATE

Agriculture 13/

	<u>Scott County</u>	<u>Labor Market Area</u>
Total land area (acres)	181,760	1,392,640
Percent of area in farm land	91.2	87.8
Number of farms	1,112	8,522
Average size of farms (acres)	149.1	144.5
1964 value of all farm products	\$8,684,246	\$72,977,613
Value per farm	7,810	8,564
Total crop sales	5,401,482	39,283,174
Total livestock & livestock products	3,261,264	34,807,476
1967 agricultural production included:		
Burley tobacco (lbs.)	9,809,000	71,567,000
Corn (bu.)	442,000	2,733,000
Cattle and calves (number)	36,700	266,300
Hogs and pigs (number)	14,300	86,000
Milk production, 1966 (lbs.)	4,280,000	117,295,000

Natural Resources

Principal mineral resources	limestone
Other mineral resources	possibly some vein minerals
Acres of commercial forest land	25,400
Most abundant tree species	white oak, red oak, hickory, ash, hard and soft maple, yellow poplar

Climate 14/

	<u>Scott County</u>
Temperature	
Annual mean (30-year record)	55.6 degrees
Average annual 1969	54.6 degrees
Record highest, July 1966 (6-year record)	98.0 degrees
Record lowest, January 1966 (6-year record)	-10.0 degrees
Seasonal heating degree-days (30-year record)	4,683
Precipitation	
Mean annual total (30-year record)	44.73 inches
Mean annual snow and sleet (25-year record)	16.00 inches
Total precipitation 1969	39.50 inches
Mean number days precipitation (25-year record)	
(.01 inch or more)	128
Average number days thunderstorms (25-year record)	47
Prevailing winds (17-year record)	south

HISTORY

Scott County was the eleventh Kentucky county formed and the second after Kentucky became a state. Dating from 1792, it was taken from Woodford County and later gave lands to help form Harrison, Campbell, and Owen Counties. The county was named for General Charles Scott, a native of Virginia and a Revolutionary War officer.

South Elkhorn Creek flows along the southwestern boundary of the county while North Elkhorn and Eagle Creeks and their tributaries drain its western and northern portions, respectively. The county's surface is gently rolling in the south and hilly and broken in the north. Its soil is fertile and agricultural crops are produced in abundance. Horses and other livestock are raised in great numbers.

Georgetown, the county seat, when originally settled in October, 1775, was called McClelland's Station, but from about 1784 to 1790 it was called Lebanon. In the latter year it was incorporated by the legislature of Virginia, and the name was changed to Georgetown in honor of George Washington.

Historical events of note include:

The first visitors to Scott County came in 1774.

Settlements were made on North Elkhorn Creek and at Great Crossing before 1778.

The site for the second courthouse was furnished in 1814.

While seasoning white oak staves in Georgetown in 1789 to make barrels to hold sour mash, the staves caught on fire and burned to a deep char. It was discovered that the charred part of the stave, placed inside the barrel to reinforce its holding ability, removed foreign particles from the sour mash, changed its color, and mellowed the sharp taste. "This discovery formed the basis for many distillers' fortune, for it made Kentucky Bourbon Whisky internationally famous."

The famous Desha-Kimbrough duel occurred in 1866.

Names worthy of remembrance are:

Colonel John Floyd and James Douglas - first visitors to Scott County.

John, Alexander, and William McClelland; Andrew and Francis McConnell; David Perry; and Charles Lecompte - first settlers to Georgetown in 1775.

Jacob Stucker, John Johnson, and Captain David Henderson - settled in Scott County before 1778.

Elijah Craig - furnished site for second courthouse.

Richard M. Johnson - hero of the War of 1812 and later the only Vice President of the United States whose election was decided by the Senate.

William Gaines - known as "The Boy Defender of Kentucky's Honor."

George W. Johnson - Provisional Governor of the Confederate Government at Bowling Green.

George Boswell - first County Judge.

Robert Saunders - famous breeder of race horses.

Samuel Y. Keene - famous breeder of horses.

James K. Duke - owned the favorite dueling ground in central Kentucky.

James Robinson - Governor of Kentucky from 1862-1863.

Sam Hill - President of Georgetown College during the 1940's.

Georgetown, heretofore, a small Kentucky college town, is now entering a new era in its history. The 1960 decade has been one of industrial growth, increasing population, new subdivisions, shopping center expansion, and added recreational facilities.

SOURCES OF INFORMATION

- 1/ U. S. Department of Commerce, Bureau of the Census, Census of Population, 1950, 1960, 1970 (Preliminary figures).
- 2/ Kentucky Department of Economic Security, Division of Research and Statistics.
- 3/ Kentucky Department of Economic Security, Number of Workers in Manufacturing Industries Covered by Kentucky Unemployment Insurance Law Classified by Industry and County, September 1959, September 1969.
- 4/ Kentucky Department of Commerce, 1970 Kentucky Directory of Manufacturers.
- 5/ Kentucky Department of Economic Security, Division of Employment Service, Lexington Office.
- 6/ Kentucky Department of Economic Security, Kentucky Labor Supply Estimates by County, January 1970.
- 7/ Kentucky Department of Commerce, Future Labor Supply by 1976.
- 8/ University of Kentucky, Office of Development Services and Business Research, Total Personal Income for Kentucky.
- 9/ University of Kentucky, Office of Development Services and Business Research, Per Capita Income in Kentucky.
- 10/ Southern Railway System, Louisville, Kentucky.
- 11/ Ecklar-Moore Express, Inc., Lexington, Kentucky.
- 12/ Kentucky Department of Revenue, Kentucky Property Tax Rates, 1969.
- 13/ U. S. Department of Commerce, Bureau of the Census, Census of Agriculture, 1964. U. S. Department of Agriculture and Kentucky Department of Agriculture, Kentucky Agricultural Statistics, 1968.
- 14/ U. S. Department of Commerce, Environmental Science Services Administration, Climatological Data, 1969.

All other information was obtained from governmental offices, local businesses and organizations.