

1967

Industrial Resources: Taylor County - Campbellsville

Kentucky Library Research Collections
Western Kentucky University, spcol@wku.edu

Follow this and additional works at: https://digitalcommons.wku.edu/taylor_ctty

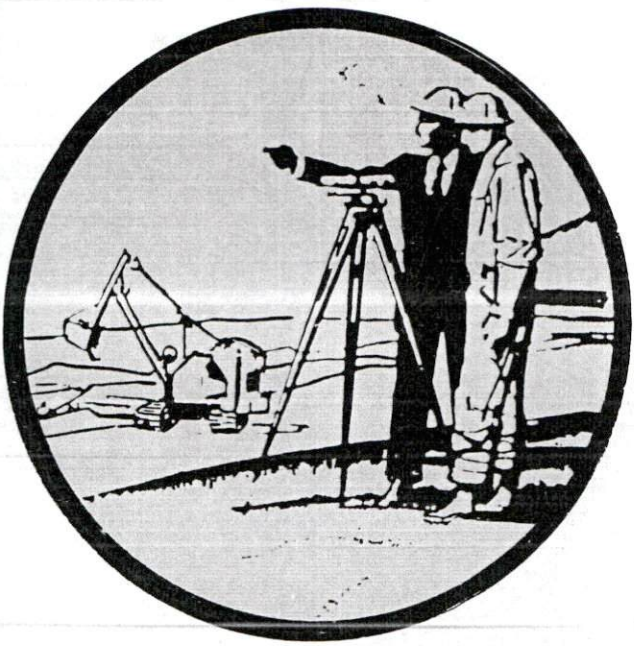
 Part of the [Business Administration, Management, and Operations Commons](#), [Growth and Development Commons](#), and the [Infrastructure Commons](#)

Recommended Citation

Kentucky Library Research Collections, "Industrial Resources: Taylor County - Campbellsville" (1967). *Taylor County*. Paper 17.
https://digitalcommons.wku.edu/taylor_ctty/17

This Report is brought to you for free and open access by TopSCHOLAR®. It has been accepted for inclusion in Taylor County by an authorized administrator of TopSCHOLAR®. For more information, please contact topscholar@wku.edu.

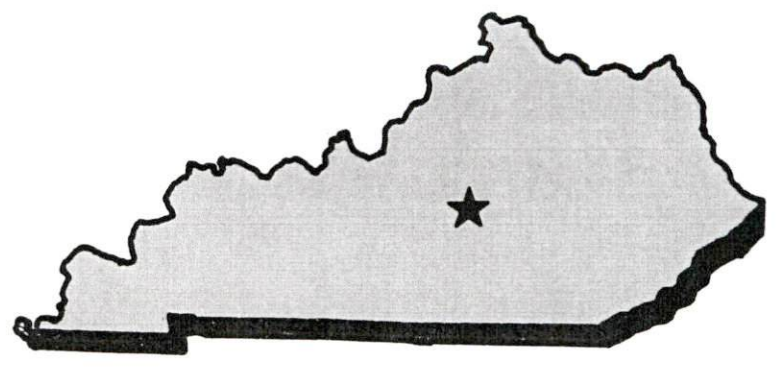
12-4-67



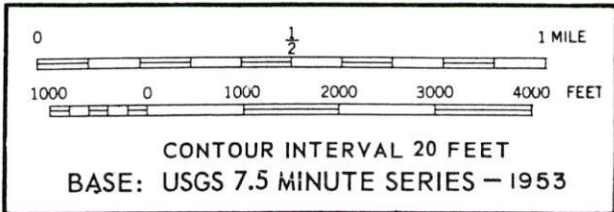
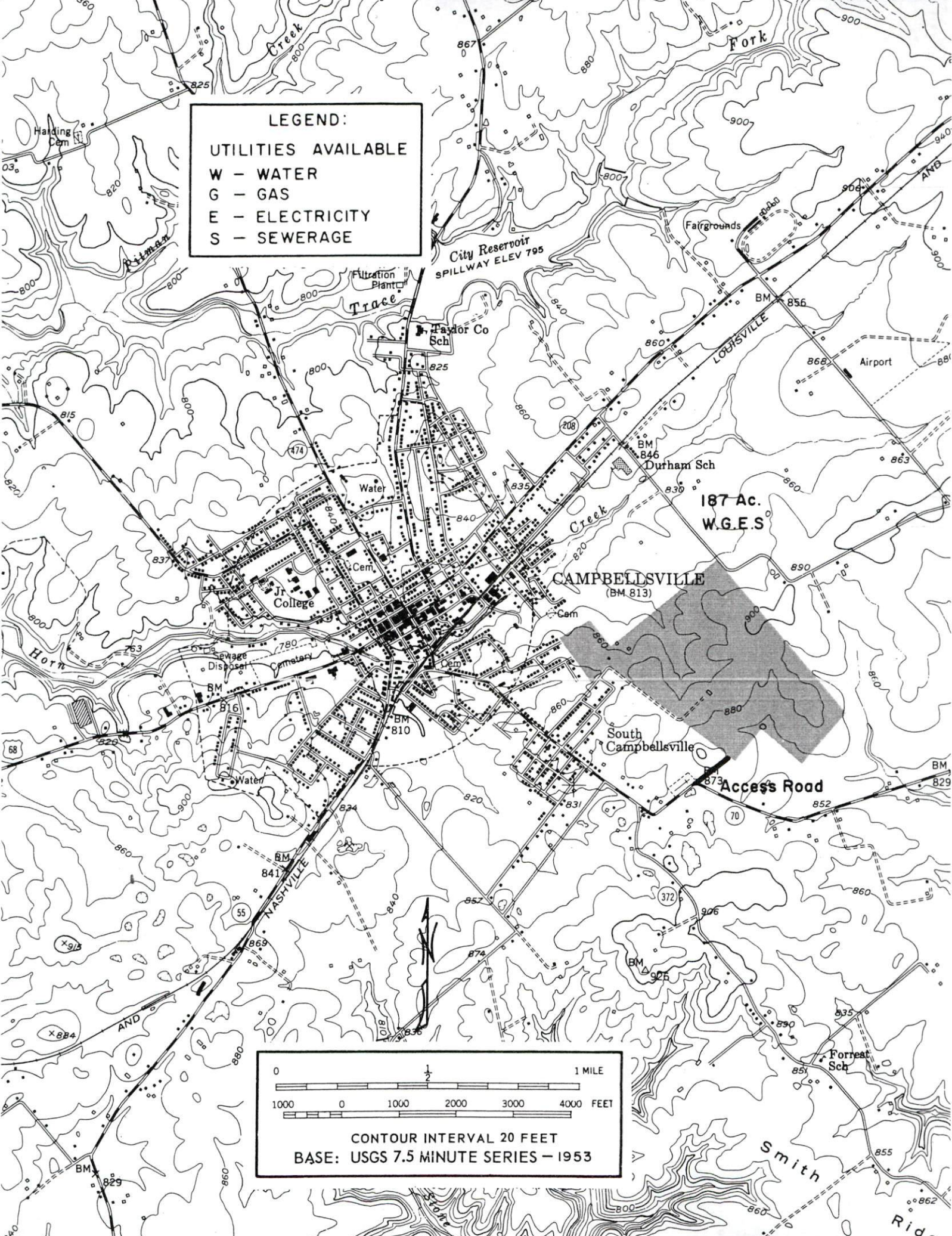
YOUR GUIDE TO A

KENTUCKY INDUSTRIAL SITE

CAMPBELLSVILLE
HAS THE
LOCATION



LEGEND:
UTILITIES AVAILABLE
 W - WATER
 G - GAS
 E - ELECTRICITY
 S - SEWERAGE



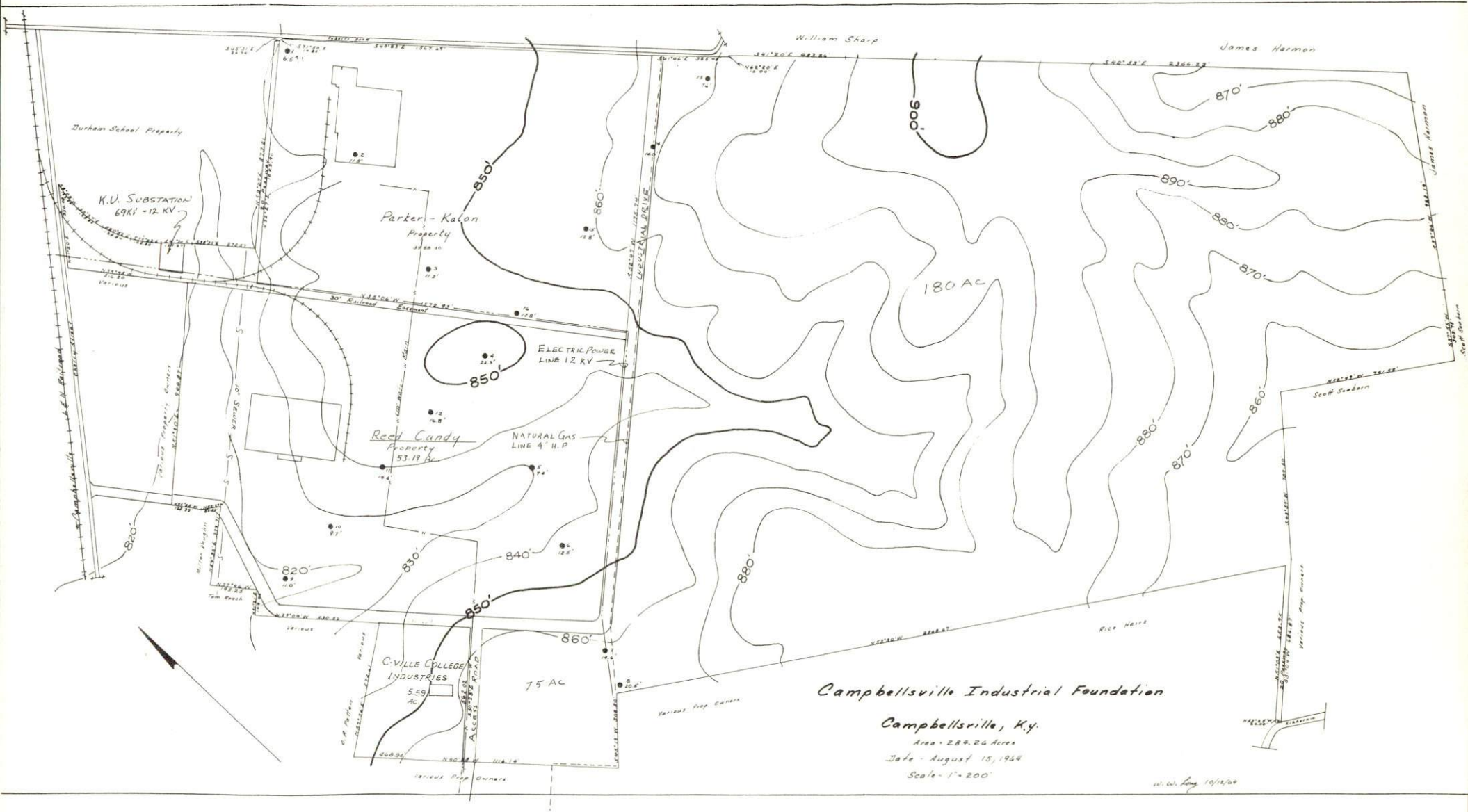
CAMPBELLSVILLE-TAYLOR COUNTY
INDUSTRIAL FOUNDATION

The Campbellsville-Taylor County Industrial Foundation, Inc., a nonprofit organization, owns 187 acres of land which have been set aside for industrial use. This land is located on the eastern edge of the city limits. Highway access is provided by Kentucky 70 and Kentucky 658. Also, an industrial access road which will be maximum weight capacity is now under construction and runs through the property.

The Louisville & Nashville Railroad lies within 1,400 feet of the property, with a spur track extending to part of the property. The L & N Company has its own easements to the property.

This property is relatively level, and the grading cost would be very small. Rock soundings will also be made available.

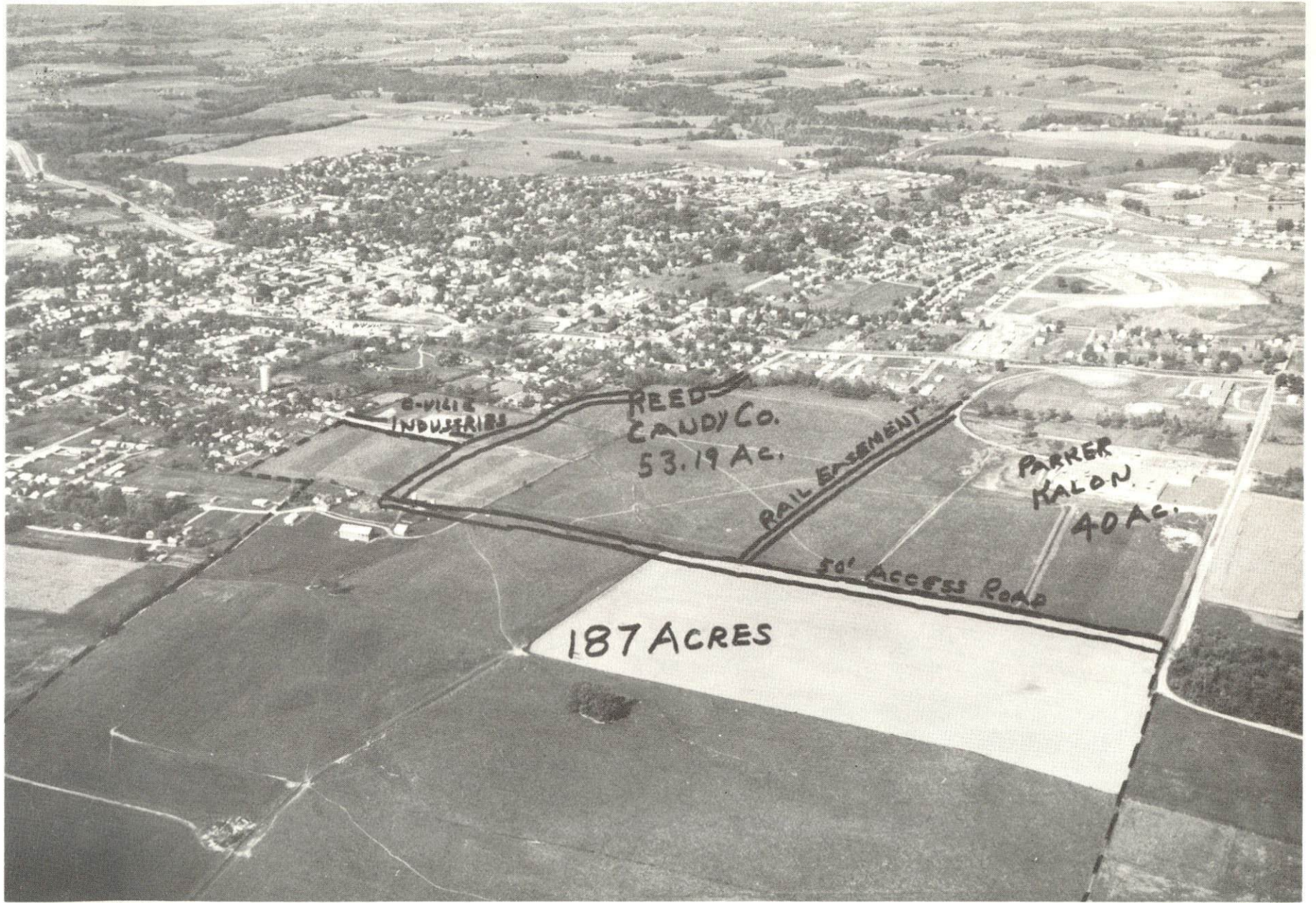
A 10-inch water line, a 10-inch sewer line, a high-pressure natural gas line, electricity, and rail to the property are readily available. Costs of further extending the utilities and rail to exact spots on the site may be negotiated.



Campbellsville Industrial Foundation

Campbellsville, Ky.
 Area - 284.26 Acres
 Date - August 15, 1964
 Scale - 1" = 200'

W. W. Long 10/12/64



B-VILLE
INDUSTRIES

REED
CAUDY CO.
53.19 AC.

RAIL EASEMENT

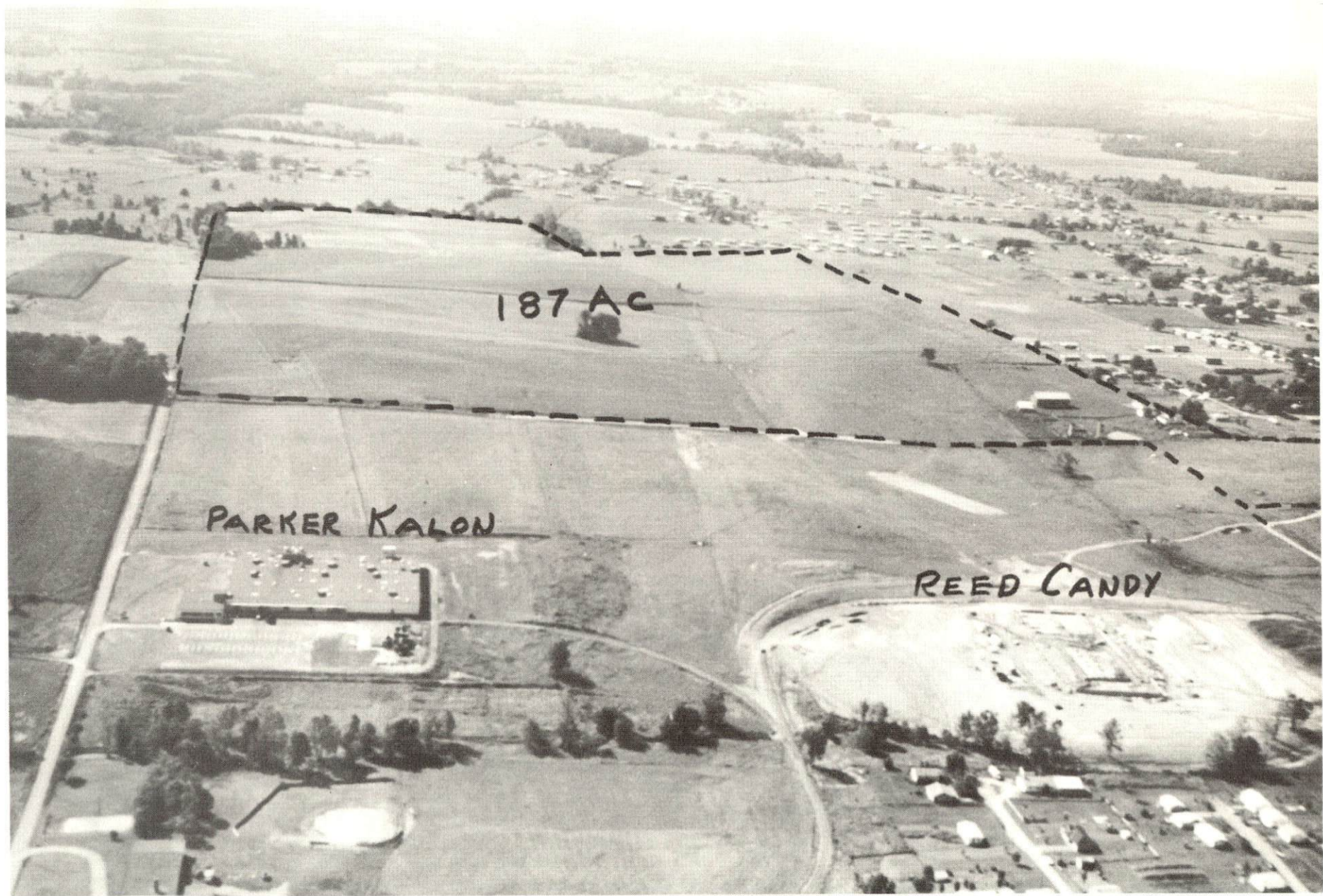
PARRER
MALON.
40 AC.

50' ACCESS ROAD

187 ACRES



187 Ac.



CAMPBELLSVILLE, KENTUCKY

LOCATION:

Campbellsville is located in the southwest portion of central Kentucky, 81 miles south of Louisville and 83 miles southwest of Lexington.

POPULATION:

1960:	Campbellsville - 6,966	Taylor County - 16,285
1967: (EST.)	Campbellsville - 10,000	Taylor County - 18,000

TRANSPORTATION:

Railroads: Campbellsville is served by a branch of the Louisville & Nashville Railroad, operating between Lebanon and Greensburg. There is one northbound and one southbound freight daily. Outbound carloads average 15 to 20 per month carrying lumber and clothing. Inbound carloads average 50 to 75 a month carrying cotton yarn, foodstuffs, butane gas, and building materials. Railway Express and switching services are available.

Air: The nearest major airport is Standiford Field, located 4 miles south of Louisville and 77 miles from Campbellsville. This airport is served by American, Delta, Eastern, Ozark, Piedmont and Trans World Airlines, with Eastern and American Airlines providing jet service.

Blue Grass Field in Lexington, 83 miles distant, also provides Campbellsville with commercial service. This field is served by Eastern, Piedmont, and Delta Airlines with 25 flights daily.

The Taylor County Airport, 1 mile from Campbellsville, maintains a 3,000-foot lighted and paved runway.

Truck Lines: Truck lines providing interstate and intrastate service to Campbellsville include: Central Motor Express, Campbellsville, Kentucky; McDuffee Motor Freight, Lebanon, Kentucky; and Skaggs Transfer, Inc., Louisville, Kentucky. Central Motor Express maintains a terminal in Campbellsville.

Bus Lines: Campbellsville is served by the Southern Greyhound Bus Lines, which operates between Greensburg, Columbia, and Louisville. There are three northbound and three southbound buses daily.

Highways: Highways serving Campbellsville are U.S. 68 and Kentucky Routes 55, 70, 210, 208, 744, and 658. A new highway that will generally follow the present route of Kentucky 55 is planned for construction. The completion of this project will give Campbellsville an excellent access road to the Bluegrass Parkway.

UTILITIES:

Electricity: Campbellsville and the Industrial Foundation property are served by the Kentucky Utilities Company, whose generating capacity totals 740,000 KW. The rural area is served power by the Taylor County RECC.

Natural Gas: The Western Kentucky Gas Company, whose source of supply is the Tennessee Gas Transmission Company, distributes natural gas in Campbellsville. BTU content is 1,020 and specific gravity is .60. Average pressure is 175 psi, while the transmission lines range from 4 to 6 inches.

Water: Treated water is supplied by the Campbellsville Municipal Water and Sewerage Company. The maximum daily pumping capacity is 2,484,000 gallons, and the peak daily use has been 1,500,000 gallons. Average daily use is 1,100,000 gallons. Storage facilities for treated water consist of a standpipe and two elevated tanks with a total capacity of 1,350,000 gallons.

Arrangements have been made with the Corps of Engineers for the installation of a pier and standpipe on Green River Reservoir, 4 miles from Campbellsville. This will provide for an additional 6,000,000 gpd.

Sewerage: Campbellsville is served by separate storm and sanitary sewers. Treatment capacity is 1,850,000 gpd, while the average daily flow is 500,000 gallons. Sanitary mains vary in size from 8 to 12 inches and the storm mains are 24 inches. Final discharge enters Buckhorn Creek.

EDUCATION:

Graded Schools:

System: Campbellsville Independent School District
Enrollment: Elementary 855; High School 412
Student-Teacher Ratio: Elementary 26-1; High School 19-1
Facilities: One high school and one elementary school,
auditorium and band hall.
Improvements: A 1,000-seat auditorium and band hall was
completed in 1965.

System: Taylor County
Enrollment: Elementary 1,326; High School 596
Student-Teacher Ratio: Elementary 29-1; High School 19-1
Facilities: Total of 81 classrooms in its elementary and high
schools

Vocational Schools: Campbellsville is served by the Somerset
Area Vocational School, Somerset, Kentucky, 67 miles distant.
Courses offered include: auto mechanics, electronics,
machine shop, printing, woodworking, radio, and electricity.

Colleges: Campbellsville College, a 4-year liberal arts college,
was founded in 1906. Degrees conferred include B. A. and B. S.
It is supported by the Baptist Churches of Kentucky and
accredited by the Southern Association of Colleges and
Secondary Schools. Enrollment is approximately 1,000 and the
college plans to double this figure within the next two years.
The school is currently involved in an extensive \$400,000
building program.

Other Kentucky institutions of higher learning in the
Campbellsville area include:

Lindsey Wilson Junior College, Columbia, 19 miles
Centre College, Danville, 51 miles
University of Kentucky, Lexington, 83 miles
Transylvania College, Lexington, 83 miles
Lexington Theological Seminary, Lexington, 83 miles
Western Kentucky University, Bowling Green, 80 miles
Bellarmine College, Louisville, 81 miles
University of Louisville, Louisville, 81 miles
St. Catherine Academy Junior College, Springfield, 28 miles

COMMUNICATION:

Telephone: The General Telephone Company of Kentucky, whose district office is in Campbellsville, provides service with a dial system. Direct distance dialing is not available at the present time. County-wide toll free service is utilized by 4,863 subscribers.

Postal Facilities: Campbellsville has a first-class post office with 27 employees. Mail is received and dispatched two times daily via star route. There are five city routes. Postal receipts for 1966 totaled \$120,876. Recent renovation of the building cost \$217,000.

Newspapers: Campbellsville is served by two weekly newspapers, the Central Kentucky News published on Wednesday with a circulation of 3,400 and the News Journal published on Thursday with a circulation of 5,000.

Daily papers are received from Louisville and Lexington.

Radio: Radio Station WTCO, in Campbellsville, operates on 1450 kilocycles with a power of 1000 watts during the day and 250 watts at night. Hours of operation are from 5:45 a.m. to 10:00 p.m. WTCO is not affiliated with any network.

WTCO also has a FM station at 103.9 megacycles.

Television: Reception from television stations in Louisville, Lexington and Bowling Green, Kentucky, and Nashville, Tennessee, via a television cable is described as excellent.

HEALTH:

Hospitals: The Rosary Hospital, Campbellsville, Kentucky, is staffed by 43 employees, including 8 medical doctors, 10 registered nurses, and 2 licensed practical nurses. The hospital has 33 beds and 12 bassinets with facilities for major and minor surgery, emergency treatment, and laboratory services.

Public Health: Campbellsville is served by the Taylor County Health Department. The staff includes 6 full-time employees and 3 part-time employees.

RECREATION:

Local: Recreational facilities in Campbellsville include: a 1 1/2-acre city park with swimming pool, three lighted baseball fields, a 14-lane bowling alley, one indoor and one outdoor movie theater, nearby lakes, Little League baseball and football, tennis courts on the college campus, and the Campbellsville Country Club, which has a 9-hole golf course, a clubhouse, and swimming pool.

Cardinal Park, of 2 1/2 acres, provides excellent picnicking facilities.

The city presently has a 43-acre municipal park under construction.

A 500-acre county park is also under construction on the Green River Reservoir.

The Kentucky Park Commission is planning a 2,200-acre park with full facilities on the banks of the Green River.

Area: Area recreational facilities include Mammoth Cave National Park, Lake Cumberland State Park, Herrington and Dale Hollow Lakes.

FINANCING:

Industrial revenue bond financing is supported by action of the city government.

ECONOMIC CHARACTERISTICS:

The area is primarily agricultural with more than 30,000 persons employed in farming. Taylor County alone has 4,937 persons in farming.

Wage rates in Taylor County are below average for the state. The average weekly earnings during 1965 were \$72.04 for all industries and \$70.65 for manufacturing. During the same period the state average was \$96.66 for all industries and \$110.10 for manufacturing.

The median annual income for families in Taylor County in 1960 was \$4,772. Of these families, 28.3 percent had an income of less than \$3,000 annually and 10.4 percent had an income of more than \$10,000 annually. Median income for males was \$2,329 and for females \$973.

Per capita income in Taylor County in 1963 was \$1,496, which was below the state average of \$1,799.

LABOR SUPPLY:

The Campbellsville labor supply area includes Taylor and the adjoining counties of Adair, Casey, Green, Larue and Marion. It is estimated that there are 3,580 men and 3,550 women in the six-county area available for industrial employment. Most of the labor force is within 30 miles of Campbellsville. Taylor County could furnish 450 men and 250 women of the above total.

The future labor supply in the Campbellsville area will include 4,565 boys and 4,530 girls who will become 18 years of age by 1973.

EXISTING INDUSTRY:

Firm	Product	Employment		
		Male	Female	Total
J. E. Bailey Wood				
Products	Barrell staves	12	0	12
Campbellsville Ice Co.	Ice	4	1	5
Campbellsville Industries	Aluminum track covers, aluminum signs, aluminum steeples	36	4	40
Campbellsville Milling Co.	Corn meal, feed	4	0	4
Carnation Co.	Evaporated milk	55	1	56
Chappell's Products, Inc.	Milk	92	7	99
Coca-Cola Bottling Co.	Soft drinks	19	4	23
Commonwealth Fertilizer Co., Inc.	Fertilizer	5	0	5
Coppock Feed & Supply	Feed, dairy equipment	4	1	5

(cont'd.)

Firm	Product	Employment		
		Male	Female	Total
Cox Lumber Co.	Lumber, crossties, stave bolts	6	0	6
Creative Press	Job printing	2	0	2
Deener Custom Kitchens	Custom cabinets	4	1	5
McMahan Furniture Co.	Cherry reproduction furniture	26	1	27
The News Journal	Newspaper shopping guide, letterpress printing, offset printing	5	3	8
Parker-Kalon Co.	Screws	146	4	150
Reed Candy Co.	(Under construction)	30	30	60
Taylor County Implement & Feed Co.	Feed	10	0	10
Union Underwear Co., Inc.	Men's and boys' underwear, infants wear	500	2,400	2,900
White Cloud, Inc.	Cleansers	15	3	18

For more detailed information concerning Campbellsville,
please request publication

"Industrial Resources, Campbellsville, Kentucky."

This copy has been prepared by the Kentucky Department of Commerce,
Division of Research, and the cost of printing paid from state funds.

MAJOR HIGHWAY NETWORK IN KENTUCKY

Compiled By
KENTUCKY DEPARTMENT
OF
COMMERCE
Frankfort, Kentucky
SEPT. 1966

MAJOR HIGHWAY NETWORK

LEGEND

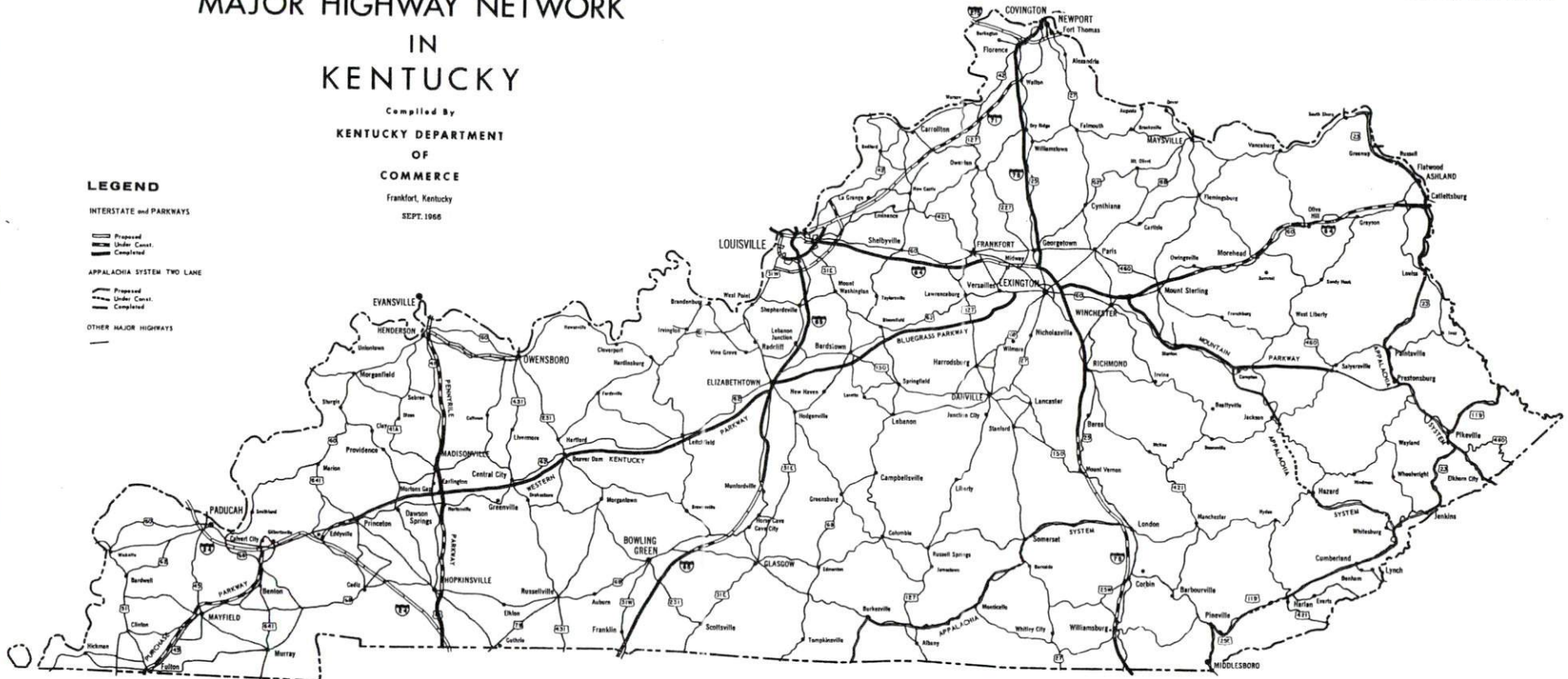
INTERSTATE and PARKWAYS

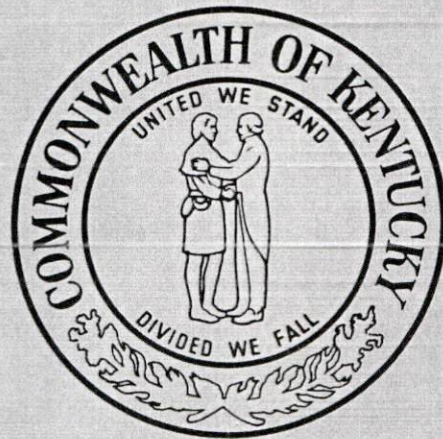
Proposed
Under Const.
Completed

APPALACHIA SYSTEM TWO LANE

Proposed
Under Const.
Completed

OTHER MAJOR HIGHWAYS





PREPARED BY
KENTUCKY DEPARTMENT OF COMMERCE
FRANKFORT, KENTUCKY

AND

CAMPBELLVILLE INDUSTRIAL
FOUNDATION

1967

Kentucky Library WKU