

1970

Industrial Resources: Trigg County - Cadiz

Kentucky Library Research Collections
Western Kentucky University, spcol@wku.edu

Follow this and additional works at: https://digitalcommons.wku.edu/trigg_cty



Part of the [Business Administration, Management, and Operations Commons](#), [Growth and Development Commons](#), and the [Infrastructure Commons](#)

Recommended Citation

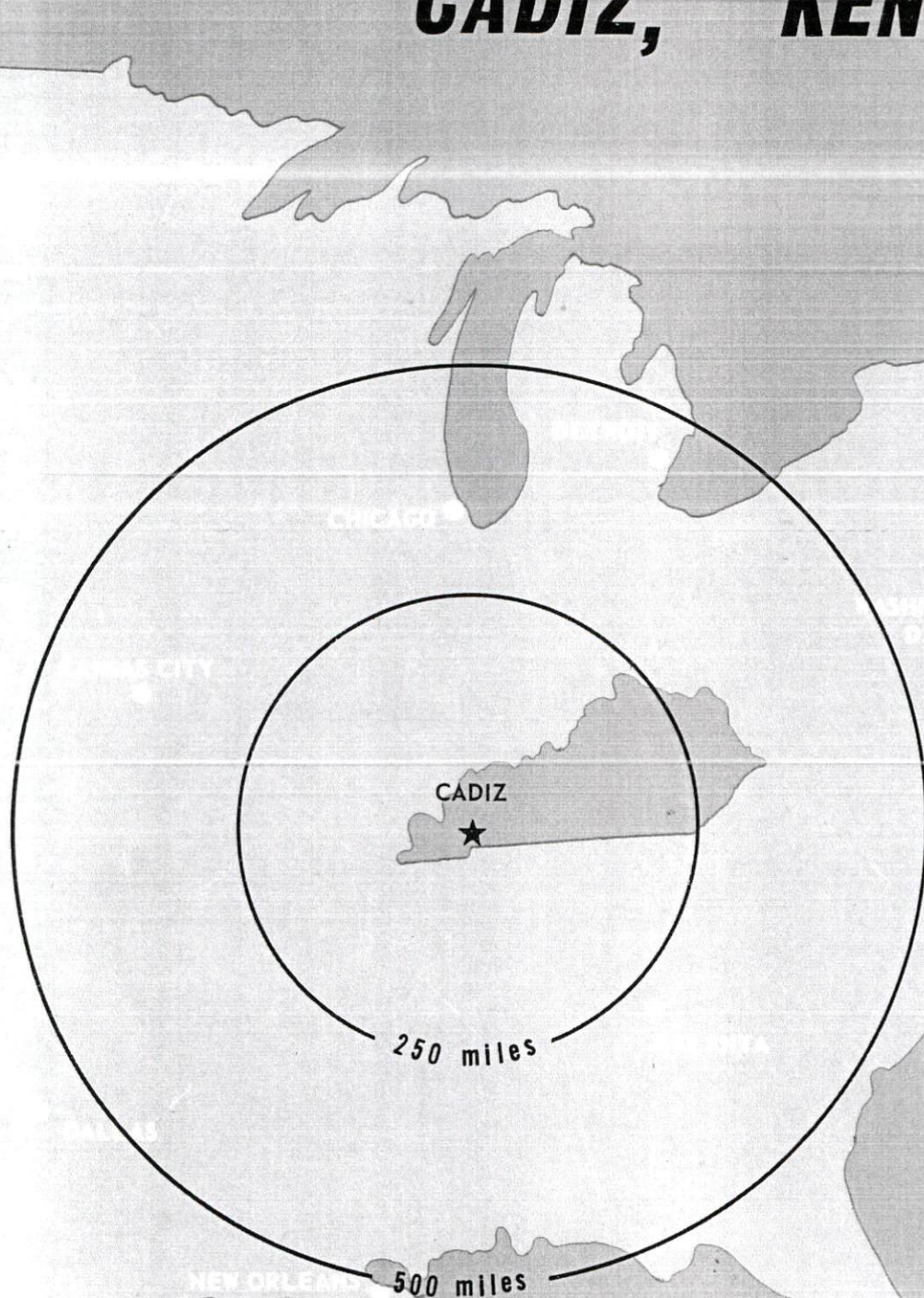
Kentucky Library Research Collections, "Industrial Resources: Trigg County - Cadiz" (1970). *Trigg County*. Paper 17.
https://digitalcommons.wku.edu/trigg_cty/17

This Report is brought to you for free and open access by TopSCHOLAR®. It has been accepted for inclusion in Trigg County by an authorized administrator of TopSCHOLAR®. For more information, please contact topscholar@wku.edu.

INDUSTRIAL
RESOURCES

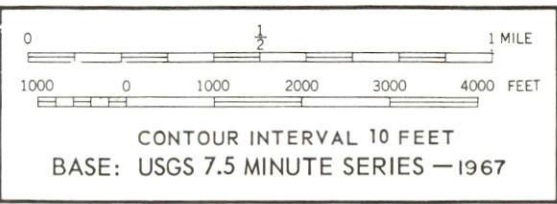
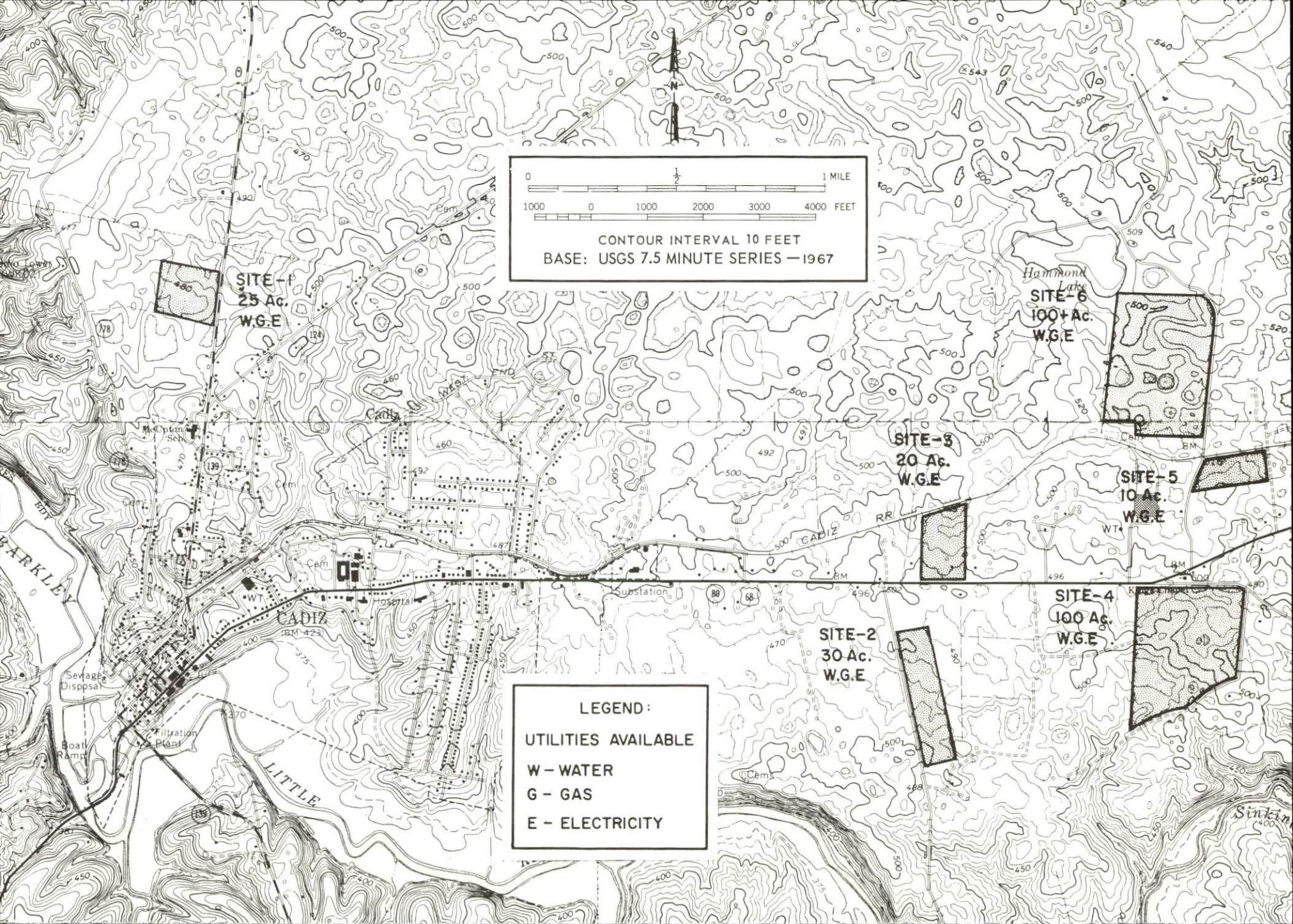
Triss

CADIZ, KENTUCKY



CADIZ INDUSTRIAL SITES

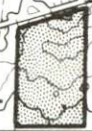
1970



SITE-1
25 Ac.
W.G.E



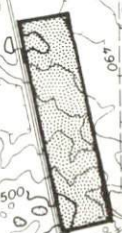
SITE-6
100+ Ac.
W.G.E



SITE-3
20 Ac.
W.G.E



SITE-5
10 Ac.
W.G.E



SITE-2
30 Ac.
W.G.E



SITE-4
100 Ac.
W.G.E

LEGEND:
UTILITIES AVAILABLE
W - WATER
G - GAS
E - ELECTRICITY

CADIZ INDUSTRIAL SITES

1970

For additional information concerning the following available industrial sites, contact
Brent Thompson, Trigg County Farmers Bank, Cadiz, Kentucky, or the Kentucky Department of
Commerce, Frankfort, Kentucky.

SITE #1: ACREAGE AND TOPOGRAPHY: 25 acres,
gently rolling
LOCATION: 1 mile north of Cadiz
ZONING: None
HIGHWAY ACCESS: Kentucky 139 borders
east side of site.
RAILROADS: Not rail served
WATER: Municipal - 2-inch line,
Trigg County Water District - 6-inch line
GAS: Western Kentucky Gas Company
ELECTRICITY: Pennyryle RECC
SEWERAGE: Package plant necessary
OWNERSHIP: Private

SITE #2: ACREAGE AND TOPOGRAPHY: 30 acres,
level to gently rolling
LOCATION: 1 mile east of Cadiz
ZONING: None
HIGHWAY ACCESS: One-fourth mile from
U.S. 68 via paved access road
RAILROADS: Not rail served
WATER: Municipal - 6-inch line 300 feet
from site
GAS: Western Kentucky Gas Company main
300 feet from site
ELECTRICITY: Pennyryle RECC
SEWERAGE: Package plant necessary
OWNERSHIP: Private

SITE #3: ACREAGE AND TOPOGRAPHY: 20 acres,
gently rolling
LOCATION: 1 mile east of Cadiz
ZONING: None
HIGHWAY ACCESS: U.S. 68 and Kentucky 80
borders south side of site.
RAILROADS: Cadiz Railroad borders north
side of site.
WATER: Municipal - 6-inch line
GAS: Western Kentucky Gas Company
ELECTRICITY: Pennyryle RECC
SEWERAGE: Package plant necessary
OWNERSHIP: Private

SITE #4: ACREAGE AND TOPOGRAPHY: 100 acres,
gently rolling
LOCATION: 1 1/2 miles east of Cadiz
ZONING: None
HIGHWAY ACCESS: U.S. 68, Kentucky 80, and
state maintained rural service road
RAILROADS: Not rail served
WATER: Municipal - 6-inch line
GAS: Western Kentucky Gas Company
ELECTRICITY: Pennyryle RECC
SEWERAGE: Package plant necessary
OWNERSHIP: Private

SITE #5: ACREAGE AND TOPOGRAPHY: 10 acres,
level
LOCATION: 1 1/2 miles east of Cadiz
ZONING: None
HIGHWAY ACCESS: Unimproved access road
from U.S. 68
RAILROADS: Cadiz Railroad
WATER: Municipal - 6-inch line 700 feet
from site
GAS: Western Kentucky Gas Company main
500 feet from site
ELECTRICITY: Pennyryle RECC
SEWERAGE: Package plant necessary
OWNERSHIP: Private

SITE #6: ACREAGE AND TOPOGRAPHY: 100+ acres,
gently rolling
LOCATION: 1 1/2 miles east of Cadiz
ZONING: None
HIGHWAY ACCESS: Unimproved access road
from U.S. 68
RAILROADS: Cadiz Railroad
WATER: Municipal - 6-inch line 700 feet
from site
GAS: Western Kentucky Gas Company -
600 feet from site
ELECTRICITY: Pennyryle RECC
SEWERAGE: Package plant necessary
OWNERSHIP: Private

INDUSTRIAL RESOURCES

CADIZ, KENTUCKY

Prepared by

The Kentucky Department of Commerce

in cooperation with

The Cadiz-Trigg County Chamber of Commerce

and

The Trigg County Industrial Foundation

1970

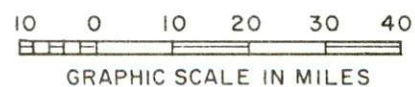
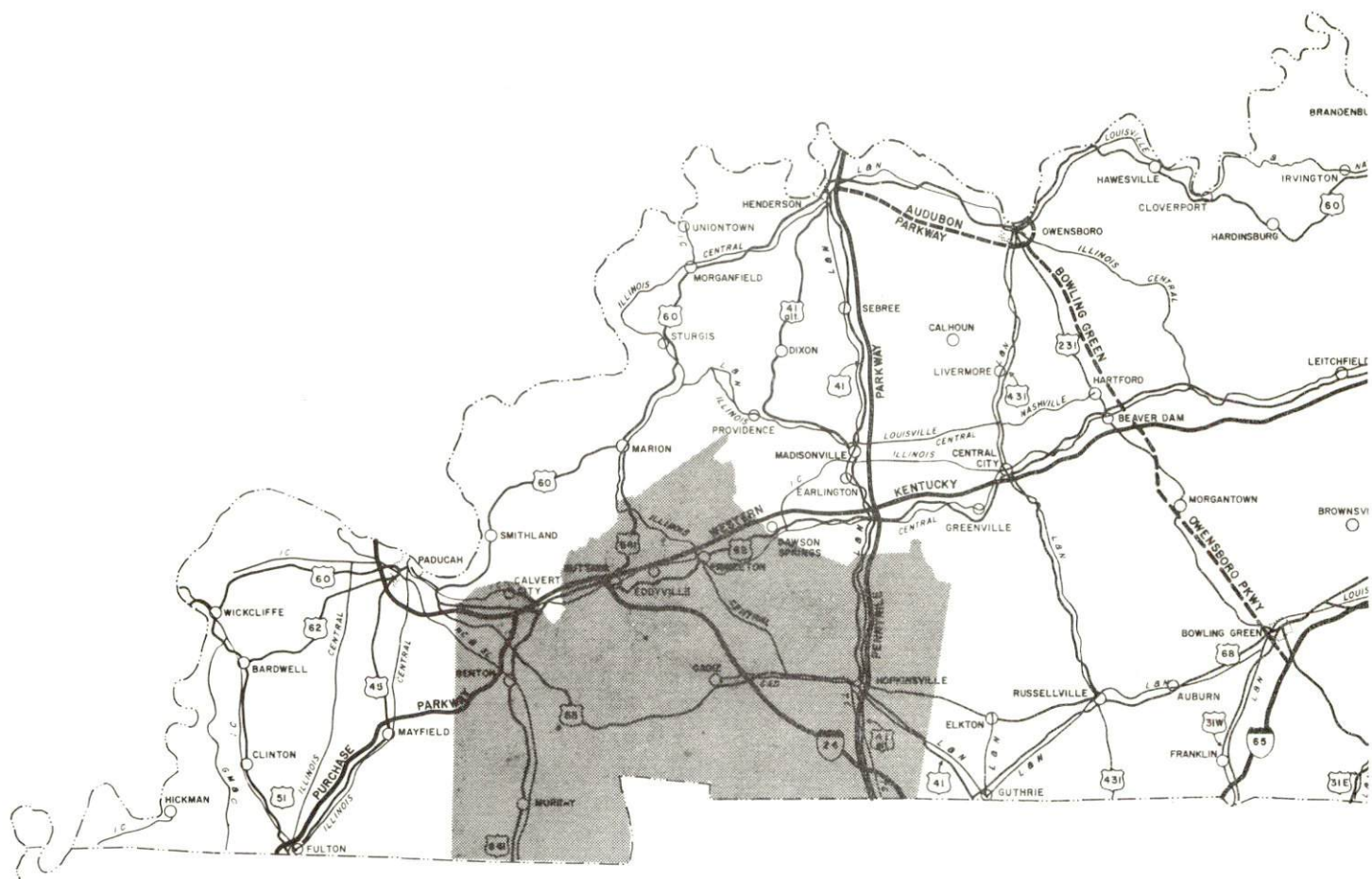
TABLE OF CONTENTS

<u>Chapter</u>	<u>Page</u>
INDUSTRIAL SITES	i
CADIZ, KENTUCKY - A RESOURCE PROFILE	1
THE LABOR MARKET	4
Population Trends	4
General Employment Characteristics.	4
Manufacturing Employment Trends by Industry	4
Cadiz Manufacturing Firms, Their Products and Employment	5
Wage Rates for Selected Occupations.	5
Labor Organizations	7
Current and Future Labor Supply	7
Total Personal Income	7
Per Capita Personal Income.	7
EDUCATION	8
Public Schools	8
Vocational Schools	8
Colleges and Universities	9
TRANSPORTATION.	10
Rail	10
Truck Service	10
Air	11
Bus.	11
POWER AND FUEL.	12
Electricity	12
Natural Gas	12
WATER AND SEWERAGE	13
Water.	13
Sewerage	15

<u>Chapter</u>	<u>Page</u>
LOCAL GOVERNMENT	16
City	16
County	16
Assessed Value of Property - 1969	16
Local General Property Tax Rates per \$100 of	
Assessed Valuation - 1969	16
Planning and Zoning	16
Safety	17
Police	17
Fire	17
Sanitation.	17
HEALTH	18
Hospitals	18
Nursing Homes	18
Public Health	18
OTHER LOCAL FACILITIES	19
Communications.	19
Library Services	19
Religious Institutions	19
Financial Institutions	20
Hotels and Motels	20
Clubs and Organizations	20
RECREATION	21
Local	21
Area.	21
AGRICULTURE - NATURAL RESOURCES - CLIMATE.	23
Agriculture	23
Natural Resources.	23
Climate	23
HISTORY	24

CADIZ LABOR MARKET AREA

*Shaded area denotes labor market area



CADIZ, KENTUCKY - A RESOURCE PROFILE

Location

Cadiz, " The Gateway to the Land Between the Lakes," is located in southwestern Kentucky approximately 5 miles east of the newly completed Lake Barkley. Cadiz, the county seat of Trigg County, is approximately 20 miles from Hopkinsville, 60 miles from Paducah, and 90 miles from Nashville, Tennessee. Trigg County is bordered by Lyon, Caldwell, and Christian Counties on the north and east, by Kentucky Lake on the west, and by Stewart County, Tennessee, on the south.

The Economic Framework

Total employment in Trigg County averaged 3,030 in 1968, with agriculture providing nearly 900 of these jobs and manufacturing providing some 500 jobs. During the first nine years of the decade manufacturing employment increased by about 130 percent. Major industrial products are automotive and truck seat springs and wearing apparel.

Per capita income in the county in 1968 was \$1,861. This figure was well below the Kentucky average, indicating a real potential for economic growth.

The Cadiz labor market includes Trigg and its five surrounding Kentucky counties. Area employment averaged 43,700 in 1968, including some 10,000 manufacturing jobs as well as 10,000 government jobs, and industrial employment has increased by nearly 65 percent. Growth has been sharpest in the primary metal, chemical, and machinery and metal products industries.

Despite important industrial gains in recent years the area still has a deficit of 3,312 manufacturing jobs when measured against the national industrial employment-population ratio. This indicates an area where the potential for additional manufacturing production is excellent.

Resources for Growth

1. There is an estimated labor supply of 3,400 men and 3,600 women available for industrial jobs in the labor market area. In addition, 7,000 young men and 5,900 young women will become 18 years of age by 1975 and potentially available for work.

2. The local transportation capability is good. Rail service is provided by the Cadiz Railroad which extends from Cadiz to Gracey, Kentucky, where it connects with the Illinois Central Railroad. Cadiz is approximately 20 miles from Hopkinsville, via U. S. 68, where an interchange of the Pennyrite Parkway is located. In addition, Interstate 24 is presently under construction. When completed, an interchange will be located approximately 5 miles from Cadiz. Water transportation via Lake Barkley - Cumberland River is also good.

3. Energy - both gas and electricity - is available in large quantity. The local water supply from Lake Barkley is more than adequate for continued industrial growth.

4. Cadiz has seven available industrial sites.

5. Cadiz lies within easy commuting distance of excellent vocational schools, three community colleges and Murray State University. In addition there is a conservation education center located in the Land Between the Lakes area which provides opportunity for the study of natural history.

Community Programs for Improvement

Cadiz has experienced a tremendous growth in recent years — new housing facilities, roads, churches, health, banking and educational facilities. As a result, utility services have increased, including the formation of the Barkley Lake Water District. An addition to the Hoover Ball and Bearing Company has also been recently completed; nearly 90 percent of the store fronts in the central business district have been modernized and a new state highway garage has been recently constructed.

Cadiz and Trigg County citizens are continuously searching for ways to improve their community. Planned improvements include the construction of a 34-bed personal care home; a city community center to include a library, recreation center, office space, meeting places, and a motion picture theater; another state highway garage; a state airport at Lake Barkley State Park; and a new county elementary school. The City of Cadiz is also planning to establish municipal sanitation service using a new county land fill for garbage disposal. Improvements are also slated for both the elementary and high school buildings.

Already underway is the new Lake Barkley State Park. The new resort includes a lodge which is scheduled to open in the Spring of 1970, a marina, public beaches, an 18-hole championship golf course, riding stables, and a camping area. A proposed new bank is planning to construct a building in Cadiz. In addition, the Trigg County Farmers Bank is presently constructing a new building. New housing and shop facilities are under construction.

Recreation, Entertainment and Livability

Cadiz, "The Gateway to the Land Between the Lakes," is located in the heart of one of the state's most beautiful recreation areas. It lies within 50 miles of four state parks and much of the Land Between the Lakes National Recreation Area lies within Trigg County. The area provides numerous picnic and camping facilities, water sports, and excellent fishing. In addition, Cadiz is located approximately 60 miles from Paducah and 90 miles from Nashville, Tennessee, where the advantages of a metropolitan area may be enjoyed. Collegiate and varsity athletic sports are available at Murray State University and community colleges within the area.

THE LABOR MARKET

POPULATION TRENDS ^{1/}

Area	1969 (Est.)	1960	1950	Percent Change	
				1960-69	1950-60
Cadiz	--	1,980	1,280	--	+54.7
Trigg County	9,000	8,870	9,683	+ 1.5	- 8.4
Labor Market Area	134,700	122,279	105,628	+10.2	+15.8
Caldwell County	13,500	13,073	13,199	+ 3.3	- 1.0
Calloway County	24,800	20,972	20,147	-18.3	+ 4.1
Christian County	60,000	56,904	42,359	+ 5.4	+34.3
Lyon County	5,700	5,924	6,853	- 3.8	-13.6
Marshall County	21,700	16,736	13,387	+29.7	+25.0

GENERAL EMPLOYMENT CHARACTERISTICS ^{2/}

Major Employment Group	1968	1968
	Trigg County	Labor Market Area
TOTAL	3,029	43,709
Agricultural	886	6,074
Nonagricultural	2,143	37,635
Manufacturing	501	10,023
Trade and Services	381	8,418
Government	333	10,097
Other	928	9,097

MANUFACTURING EMPLOYMENT TRENDS BY INDUSTRY SEPTEMBER 1959 AND 1968 ^{3/}

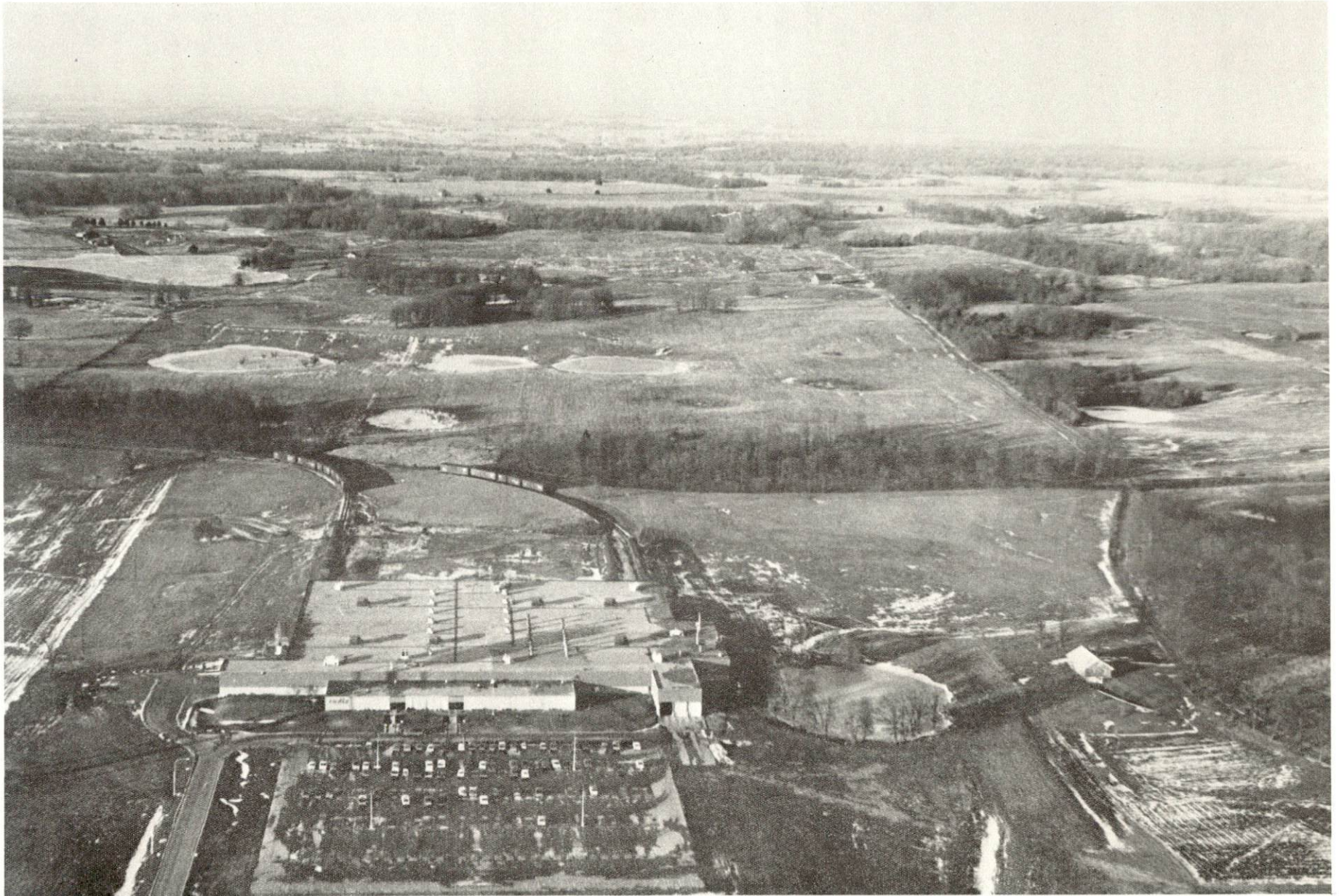
Industry	Trigg County			Labor Market Area		
	1968	1959	% Change	1968	1959	% Change
TOTAL	501	216	+131.9	10,023	6,085	+ 64.7
Food & kindred products	10	13	- 23.1	325	533	- 39.0
Apparel, textiles, leather	129	72	+ 72.2	1,788	1,859	- 3.8
Lumber & furniture	24	127	- 81.1	378	457	- 17.6
Printing, publishing, paper	1	4	- 75.0	108	91	+ 18.7
Chemicals, petroleum, coal, rubber	0	0	--	2,430	1,420	+ 73.2
Stone, clay & glass	0	0	--	121	103	+ 18.4
Primary metals	0	0	--	793	287	+176.3
Machinery & metal products	337	0	--	3,851	1,312	+193.5
Other	0	0	--	229	23	+ 90.0

CADIZ MANUFACTURING FIRMS,
THEIR PRODUCTS AND EMPLOYMENT 4/

Firm	Product	Employment		
		Total	Male	Female
Bailey Lumber Co.	Sawmill	25	25	0
Cadiz Spring Products, Division of Hoover Ball and Bearing	Automotive, truck seat springs	400		
Elk Brand Manufacturing Co.	Dungarees, insulated apparel	82	11	71
Noel Concrete and Excavating Co.	Ready mixed concrete, concrete block	25	24	1
Trigg Knit Hosiery Mill	Women's hosiery	64	15	49

WAGE RATES FOR SELECTED OCCUPATIONS
CADIZ, KENTUCKY 5/

Classification	Rate Per Hour		
	Starting	Maximum	Prevailing
<u>Production Employees</u>			
Assembler	\$1.65	\$1.89	\$1.74
Inspector	2.00	2.15	2.00
Production Laborer	1.70	1.89	1.74
Welder, Arc or Acetylene (Class-A)	1.70	2.00	1.80
<u>Service Employees</u>			
Electrician (Class-A)	\$3.75	\$5.10	\$4.00
Laborer	1.60	2.90	1.75
Machinist	2.30	3.00	2.82
Mechanic, Maintenance	2.30	3.00	2.89
Truck Driver, Industrial (Class-A)	1.60	2.00	1.60
<u>Office Employees</u>			
Bookkeeper	\$1.70	\$2.10	\$1.75
File Clerk	1.65	1.85	1.70
Receptionist	1.60	1.80	1.70
Secretary	1.85	2.15	1.85
Typist	1.60	1.80	1.65



HOOVER BALL AND BEARING COMPANY

LABOR ORGANIZATIONS

<u>Union</u>	<u>Representing Workers at:</u>
United Steelworkers of America	Cadiz Spring Products, Division of Hoover Ball and Bearing Company

CURRENT AND FUTURE LABOR SUPPLY - CADIZ LABOR MARKET AREA

<u>County</u>	<u>1969</u>			<u>Future Labor Supply by 1975</u>		
	<u>Current Labor Supply ^{6/}</u>			<u>(Becoming 18 Years of Age) ^{7/}</u>		
	<u>Total</u>	<u>Male</u>	<u>Female</u>	<u>Total</u>	<u>Male</u>	<u>Female</u>
Labor Market Area	6,954	3,368	3,586	12,001	6,995	5,906
Trigg	673	326	347	863	422	441
Caldwell	533	239	294	1,185	610	575
Calloway	1,712	825	887	1,566	793	773
Christian	1,555	688	867	6,104	3,104	3,000
Lyon	669	379	290	421	219	202
Marshall	1,812	911	901	1,862	947	915

TOTAL PERSONAL INCOME ^{8/}

<u>Area</u>	<u>1968</u>	<u>1959</u>	<u>% Change</u>
Trigg County	\$ 16,749,000	\$ 8,013,000	+109.0
Labor Market Area	376,688,000	186,264,000	+102.0
Kentucky	8,360,000,000	4,655,000,000	+ 79.6

PER CAPITA PERSONAL INCOME ^{9/}

<u>Area</u>	<u>1968</u>	<u>1959</u>	<u>% Change</u>
Trigg County	\$1,861	\$ 933	+99.5
Labor Market Area	\$1,372 to 3,636	\$918 to 2,171	+49.5 to +67.5
Kentucky	2,614	1,552	+68.4

EDUCATION

Public Schools

	<u>Trigg County</u>
Total Enrollment	1,954
Elementary	896
Junior High	530
High School	528
Student-Teacher Ratio	
Elementary	23-1
Junior High	24-1
High School	22-1
State Rating of High School	Standard
Percent High School Graduates to College	31.8
Current Expenditures Per Pupil	\$399.61
Bonded Indebtedness	\$485,000

Vocational Schools

	<u>Nearest Area School</u>	<u>Nearest Extension Center</u>
Location	Madisonville	Hopkinsville
Miles Distant	50 miles	20 miles
Curriculum	Practical Nursing	Appliance Repair
	Surgical Technician	Auto Mechanics
	Distributive Education	Carpentry
	Electronics (Industrial)	Drafting
	Auto Body Repair	Electricity
	Auto Mechanics	Welding
	Carpentry	
	Drafting	
	Electricity	
	Machine Shop	

Colleges and Universities

<u>Name</u>	<u>Area - Within 50 Miles</u>		<u>Highest Degree Conferred</u>
	<u>Location</u>	<u>Enrollment</u>	
Murray State University	Murray	7,334	Masters
Madisonville Community College	Madisonville	203	Associate
Paducah Community College	Paducah	1,051	Associate
Hopkinsville Community College	Hopkinsville	451	Associate

TRANSPORTATION

Rail

Lines serving Cadiz - Cadiz Railroad

Services - Joins with the Illinois Central Railroad at Gracey, Kentucky; freight, team track facilities for 16 cars.

RAILWAY TRANSIT TIME FROM GRACEY, KENTUCKY, TO: 10/

City	No. of Days		City	No. of Days	
	CL			CL	
Atlanta, Ga.	4		Los Angeles, Calif.	6	
Birmingham, Ala.	3		Louisville, Ky.	2	
Chicago, Ill.	3		Nashville, Tenn.	2	
Cincinnati, Ohio	4		New Orleans, La.	3	
Cleveland, Ohio	5		New York, N. Y.	5	
Detroit, Mich.	5		Pittsburgh, Pa.	4	
Knoxville, Tenn.	4		St. Louis, Mo.	3	

Truck Service

Company

Home Office

Harper Truck Service, Inc.
Arnold Ligon Truck Line, Inc.
(Ellis Trucking)
McLean Trucking Company

Paducah, Kentucky
Indianapolis, Indiana
Winston-Salem, North Carolina

HIGHWAY MILES AND TRUCK TRANSIT TIME IN DAYS FROM CADIZ, KENTUCKY, TO SELECTED MARKET CENTERS

City	Highway Miles	Delivery Time <u>11/</u>		City	Highway Miles	Delivery Time	
		LT	TL			LT	TL
Atlanta, Ga.	346	2-3	1-2	Los Angeles, Calif.	2,153	7-9	4-6
Birmingham, Ala.	292	2-3	1	Louisville, Ky.	188	1	1
Chicago, Ill.	390	2-3	1	Nashville, Tenn.	90	1-2	1
Cincinnati, Ohio	302	1-2	1	New Orleans, La.	713	3-4	2
Cleveland, Ohio	544	2-3	1-2	New York, N. Y.	974	3-4	2-3
Detroit, Mich.	567	2-3	1-2	Pittsburgh, Pa.	591	2-4	1-2
Knoxville, Tenn.	287	2-3	1-2	St. Louis, Mo.	234	1-2	1

Air

	<u>Local</u>	<u>Local</u>
	Allen Airport (private)	Broadbent Airport (private)
Location:	1 mile west of Cadiz	6 miles east of Cadiz
Runways:	one turf	two turf
Length:	3,000 feet	2,200 ft., 2,180 ft.
Traffic		
Control:	none	wind sock
Lighting:	none	none
Services:	tie down, phone	80 octane in emergency, phone at Broadbent Seed Plant
	<u>Local</u>	<u>Nearest Commercial</u>
	Woodruff Airport (private)	Barkley Field
Location:	3 miles east of Cadiz	8 miles west of Paducah
Runways:	one paved	two paved
Length:	3,500 feet	6,500 ft., 4,000 ft.
Traffic		
Control:	wind sock	wind tee
Lighting:	runway, obstructions	beacon, boundary, obstruction, runway lights and runway end identification lights
Services:	100 octane in emergency, tie down, phone	80 and 100 octane; jet fuel; Delta, Ozark, Sun, and Desota Airlines; taxi; limousine; U-Drive-It; storage; major A & E repairs

Bus - Western Kentucky Stages

POWER AND FUEL

Electricity

Company serving Cadiz and Trigg County - Pennyrile RECC
Source of power - Tennessee Valley Authority
Total generating capacity - 18,202,090 KW
Industrial rates furnished by - Tennessee Valley Authority, P. O.
Box 726, Hopkinsville, Kentucky

Natural Gas

Company serving Cadiz - Western Kentucky Gas Company
Source of supply - Texas Gas Transmission Corporation and local
production
Size of transmission lines - 6-inch
Distribution lines - 2, 3, and 4 inches
BTU content - 1,000; Specific gravity - .06
Distribution pressure - variable (up to 60 psi)

Rates will be furnished by Western Kentucky Gas Company, Owensboro,
Kentucky.

WATER AND SEWERAGE

Water

Company serving Cadiz - Cadiz Water Works
Source - Spring and Little River
Treatment plant capacity - 720,000 gpd
Average daily consumption - 200,000 gallons
Peak daily consumption - 250,000 gallons
Type treatment - chlorination, fluoridation, lime, alum, settling, filtration
Storage capacity - 640,000 gallons
Average pressure - 50 psi
Average temperature - 60 degrees
Size mains - 6 and 8 inches

MONTHLY WATER RATES FOR WHOLESALE AND INDUSTRIAL CONSUMERS

Minimum monthly water rates for the first 2,000 gallons or less of water per month for water connections of all sizes

<u>Size of Connection</u>	<u>Minimum Rates</u>
3/4-inch or less	\$ 4.00
over 3/4-inch to 1-inch	8.00
over 1-inch to 1 1/4-inch	11.25
over 1 1/4-inch to 1 1/2-inch	14.75
over 1 1/2-inch to 2-inch	21.25
over 2-inch to 3-inch	41.50
over 3-inch to 4-inch	68.00

Water Rates, City

Minimum (2,000 gallons)	\$ 4.00*
Next 3,000 gallons, per 1,000 gallons	1.35
Next 5,000 gallons, per 1,000 gallons	1.10
Next 10,000 gallons, per 1,000 gallons	.80
Next 30,000 gallons, per 1,000 gallons	.70
Next 50,000 gallons, per 1,000 gallons	.55
Over 100,000 gallons, per 1,000 gallons	.45

*Minimum rate for 3/4-inch or less.

Water Rates, Rural (Immediate area outside city limits)

Minimum	(2,000 gallons)	\$4.75
Next	3,000 gallons, per 1,000 gallons	1.60
Next	5,000 gallons, per 1,000 gallons	1.35
Next	10,000 gallons, per 1,000 gallons	1.10
Next	30,000 gallons, per 1,000 gallons	.95
Next	50,000 gallons, per 1,000 gallons	.70
Over	100,000 gallons, per 1,000 gallons	.45

Company serving Trigg County - Barkley Lake Water District

Source - Lake Barkley

Treatment plant capacity - 1,000,000 gpd

Average daily consumption - 125,000 gallons

Peak daily consumption - 250,000 gallons

Type treatment - sand filter, chlorination, fluoridation, lime, alum,
activated charcoal

Storage capacity - 500,000 gallons

Average pressure - 50-60 psi

Average temperature - 60 degrees

Size mains - 10, 8, 6, 4, and 3 inches

MONTHLY WATER RATES FOR WHOLESALE
AND INDUSTRIAL CONSUMERS

Minimum charges per month for 5/8-inch service \$4.00

First	2,000 gallons, per 1,000 gallons	2.00
Next	3,000 gallons, per 1,000 gallons	1.20
Next	5,000 gallons, per 1,000 gallons	1.00
Next	10,000 gallons, per 1,000 gallons	.80
Next	30,000 gallons, per 1,000 gallons	.70
Next	50,000 gallons, per 1,000 gallons	.50
Over	100,000 gallons, per 1,000 gallons	.35

Meter Size

Minimum Rates

5/8-inch	\$ 4.00
3/4-inch	4.00
1-inch	7.60
1 1/2-inch	12.60
2-inch	20.60
3-inch	40.00
4-inch	65.00

Industrial rates may be negotiated.

Surface water sources and average discharge - Lake Barkley, unlimited supply for most purposes; Cumberland River, Little River about 330 cfs, USGS

Expected ground water yield - Southern and northern portion 5-50 gpm, central portion 50-200 gpm

Yield along main streams - 50-200 gpm

Sewerage

Company serving Cadiz - Municipal

Design population - 3,500

Average daily flow - 90,000 gallons

Treatment - primary and secondary

Type treatment - aeration, digester

Treated effluent discharged into - Little River

Size of sanitary main - 4-8 inches

Rates:

SEWER RATES BASED ON WATER USAGE

Minimum (2,000 gallons)	\$3.15
Next 3,000 gallons, per 1,000	1.10
Next 5,000 gallons, per 1,000	.90
Next 10,000 gallons, per 1,000	.70
Next 30,000 gallons, per 1,000	.65
Next 50,000 gallons, per 1,000	.55
Over 100,000 gallons, per 1,000	.50

LOCAL GOVERNMENT

City

Structure - Mayor - 4-year term; 6 councilmen - 2-year terms

Budget 1969 - General Fund \$71,500; Water and Sewer Fund, 1969-70 - \$142,500

Fees and licenses - Business licenses range from \$25 to \$3,750, annually

County

Structure - County judge - 4-year term; 7 magistrates - 4-year terms

Budget 1969 - General Fund \$91,435; Road Fund \$61,214

Assessed Value of Property - 1969

<u>Classes of Property*</u>	<u>Cadiz</u>	<u>Trigg County</u>
Real Estate	\$6,873,380	\$44,290,935
Tangibles	2,249,253	6,426,105
Public Service (as of October 31)	669,920	4,620,094

Local General Property Tax Rates Per \$100 of Assessed Valuation - 1969 ^{12/}

<u>Taxing Unit**</u>	<u>Cadiz</u>	<u>Trigg County</u>
State	\$.015	\$.015
County	.098	.098
School	.451	.451
City	.260	.
Total	\$.824	\$.564

Planning and Zoning

Agency - Cadiz Planning Commission

Plans completed - Base Studies, Zoning and Subdivision Regulations, Public Improvements Program, Neighborhood Analysis, Comprehensive Plan, Housing Condition Survey

Plans in process - Capital Improvements Budget, Fringe Areas Studies, Housing Element Study

*Property assessed at 100 percent of fair value.

**Manufacturing machinery, raw materials inventories and goods in process inventories are not subject to local tax. State rate is only \$.15 per \$100.

SafetyPoliceCadizTrigg County

Total staff
Radio-patrol cars

5 3
1 1

Fire

Volunteers
Equipment:
275 gpm pumpers
300 gpm pumpers
750 gpm pumpers

16 16

1
1
1 1

SanitationCadiz

Type service
Cost

private contract
varies according
to collection
frequency

Collection frequency
Trash pickup
Disposal method

as required
weekly
land fill

HEALTH

Hospitals

	<u>Number</u>	<u>Beds</u>
General hospitals	1	40
General hospital facilities - laboratory, emergency, OBGYN, X-ray, EKG, cardiac care unit, part of West Kentucky Hospital Service, Inc.*		
Medical staff - 5 doctors, 6 registered nurses, 5 licensed practical nurses		

Nursing Homes

	<u>Number</u>	<u>Beds</u>
Extended care homes	1	39

Public Health

Facility - Trigg County Health Department *

Staff - Registered nurse, sanitarian, administrative assistant, clerk,
health officer(1/5 time)

Budget 1969-70 - \$40,638

*Participants in:

Mid-South Regional Medical Program
Pennyroyal Mental Retardation Program
Comprehensive Health Planning
Red Cross Whole Blood Program

OTHER LOCAL FACILITIES

Communications

Telephone - South Central Bell Telephone Company
Services - Standard, direct distance dialing

Postal - Second-class U. S. Post Office
Mail received - 3 times per day
Mail dispatched - 3 times per day

Newspaper Weekly - The Cadiz Record
Circulation - 2,000

Radio - WKDZ
Hours of operation - AM - sunup to sundown
Stations received from - Hopkinsville, Louisville, and Lexington,
Kentucky; Nashville, Tennessee

Television
Reception from - Paducah and Bowling Green, Kentucky; Cape
Girardeau, Missouri
Kentucky Educational Television - Channel 35, Murray transmitter
Tennessee Educational Television - Channel 2, Nashville transmitter

Library Services

Public libraries - Trigg County Library
Size collection - 20,385 volumes
Circulation 1967 - 54,518 volumes
Services - magazines, information file material, film strip slides,
phonograph records, framed paintings, audio-visual equipment,
sports equipment

Religious Institutions

Number of churches - 11
Denominations - Baptist, Methodist, Christian, Church of Christ,
Church of God, Catholic, and Presbyterian

Financial Institutions

<u>Bank</u>	<u>Statement as of June 30, 1969</u>	
	<u>Assets</u>	<u>Deposits</u>
Trigg County Farmers Bank	\$12,460,743.12	\$11,448,478.23

Hotels and Motels

<u>Number</u>	<u>Units</u>
4	52

Clubs and Organizations

Business and Civic - Chamber of Commerce, Lions Club, Civitan Club,
Junior Chamber of Commerce, Rotary

Fraternal - Masons, American Legion

Women's - Eastern Star, Hospital Auxiliary, Homemakers, Woman's
Club, Business and Professional Women's Club, Jaycettes

Youth - Boy Scouts, Cub Scouts, Girl Scouts, Brownies, Little League,
4-H, FFA, Explorers, Teen Club

RECREATION

Local

Public Recreation Facilities

Supervised program - 1

Parks - 1

Playgrounds - 1 (at school location)

Swimming pools - 1

Tennis courts - 2

Baseball diamonds - 1

Football fields - 1

Other - softball diamond, basketball court, 18 Army Corp of Engineers

Recreation Areas (includes launching ramp, picnic area, camping facility)

Tourist Attractions

Barkley Lake State Resort, Land Between the Lakes National Recreation Area

Cultural Events

Community Chorus, Summer Open Air Theater

Area (Within 50 miles)

Kenlake State Park, Kentucky Dam Village State Park, Pennyrile State Park, University of Kentucky Community Concert Series at Hopkinsville Community College



LAKE BARKLEY STATE PARK LODGE

AGRICULTURE - NATURAL RESOURCES - CLIMATE

Agriculture 13/

	<u>Trigg County</u>	<u>Labor Market Area</u>
Total land area (acres)	293,760	1,587,840
Percent of area in farm land	49.1	61.2
Number of farms	654	6,434
Average size of farms (acres)	220.7	151.3
1964 value of all farm products	\$4,418,937	\$33,120,417
Value per farm	\$ 6,757	\$ 5,148
Total crop sales	\$2,169,953	\$15,847,148
Total livestock & livestock products	\$2,248,689	\$17,292,106
1967 agricultural production included:		
Burley tobacco (lbs.)	6,828,000	14,224,000
Corn (bu.)	1,200,000	104,810,000
Cattle and calves (number)	26,100	169,300
Hogs and pigs (number)	26,900	1,225,000
Milk production, 1966 (lbs.)	3,920,000	66,835,000

Natural Resources

Principal mineral resources	limestone, clay
Other mineral resources	several deposits of iron minerals
Acres of commercial forest land	148,300
Most abundant tree species	red and white oaks, hickory, sweetgum, cottonwood, soft maple, ash (shown in order of abundance)

Climate 14/

Temperature	
Annual mean	60.0° (30-year record)
Average annual 1968	57.3°
Record highest September 1966	103.0° (13-year record)
Record lowest January 1966	- 6.0° (13-year record)
Seasonal heating degree-days	3,578 (30-year record)
Precipitation	
Mean annual total	45.14 inches (30-year record)
Mean annual snow and sleet	11.30 inches (27-year record)
Total precipitation 1968	43.93 inches
Mean number days precipitation, .01 inch or more	117 (27-year record)
Average number days thunderstorms	56 (27-year record)
Prevailing winds	south

HISTORY

Trigg County was established in 1820 as the sixty-sixth Kentucky county. It was named for Colonel Stephen Trigg, a native of Virginia who came to Kentucky as a member of the Court of Land Commissioners, and after the surveys were completed, decided to remain in Kentucky. He established the reputation as an Indian fighter, and the settlers felt secure when he was in the vicinity. He lost his life in 1782 in the Battle of Blue Licks.

A small quantity of lead ore was found in Trigg County before the Civil War and sufficient iron ore deposits were discovered to support three blast furnaces during the 1840's and 1850's.

A large amount of the "Land Between the Lakes" area lies in Trigg County. Today the county is bounded, cut through, and flooded with a water system that has changed not only its physical appearance but also its economic outlook. Recreational facilities and tourism are increasing each year and future prospects appear to be bright.

Cadiz, the county seat, was incorporated on December 6, 1822. It lies in the center of a large dark-leaf tobacco-growing area. It is noted for the number and quality of old hams shipped each year.

SOURCES OF INFORMATION

- 1/ U.S. Department of Commerce, Bureau of the Census, Census of Population, 1950, 1960. Department of Rural Sociology, University of Kentucky, Kentucky County Provisional Population Estimates: January 1, 1969.
- 2/ Kentucky Department of Economic Security, Division of Research and Statistics.
- 3/ Kentucky Department of Economic Security, Number of Workers in Manufacturing Industries Covered by Unemployment Insurance Law Classified by Industry and County, September 1959, September 1968.
- 4/ Kentucky Department of Commerce, 1970 Kentucky Directory of Manufacturers.
- 5/ Kentucky Department of Economic Security, Division of Employment Service, Hopkinsville Office.
- 6/ Kentucky Department of Economic Security, Kentucky Labor Supply Estimates by County, January 1969.
- 7/ Kentucky Department of Commerce, Future Labor Supply by 1975.
- 8/ University of Kentucky, Office of Development Services and Business Research, Total Personal Income For Kentucky.
- 9/ University of Kentucky, Office of Development Services and Business Research, Per Capita Income in Kentucky.
- 10/ Illinois Central Railroad, Louisville, Kentucky.
- 11/ McLean Trucking Service, Winston-Salem, North Carolina.
- 12/ Farmer & Humble, Certified Public Accountants, 1969 Kentucky Tax Rate Schedule.
- 13/ U.S. Department of Commerce, Bureau of the Census, Census of Agriculture, 1964. U.S. Department of Agriculture and Kentucky Department of Agriculture, Kentucky Agricultural Statistics, 1968.
- 14/ U.S. Department of Commerce, Environmental Science Services Administration, Climatological Data, 1967.

All other information was obtained from governmental offices, local businesses and organizations.