

1967

# Industrial Resources: Union County - Sturgis

Kentucky Library Research Collections  
Western Kentucky University, [spcol@wku.edu](mailto:spcol@wku.edu)

Follow this and additional works at: [https://digitalcommons.wku.edu/union\\_cty](https://digitalcommons.wku.edu/union_cty)



Part of the [Business Administration, Management, and Operations Commons](#), [Growth and Development Commons](#), and the [Infrastructure Commons](#)

---

## Recommended Citation

Kentucky Library Research Collections, "Industrial Resources: Union County - Sturgis" (1967). *Union County*. Paper 1.  
[https://digitalcommons.wku.edu/union\\_cty/1](https://digitalcommons.wku.edu/union_cty/1)

This Report is brought to you for free and open access by TopSCHOLAR®. It has been accepted for inclusion in Union County by an authorized administrator of TopSCHOLAR®. For more information, please contact [topscholar@wku.edu](mailto:topscholar@wku.edu).

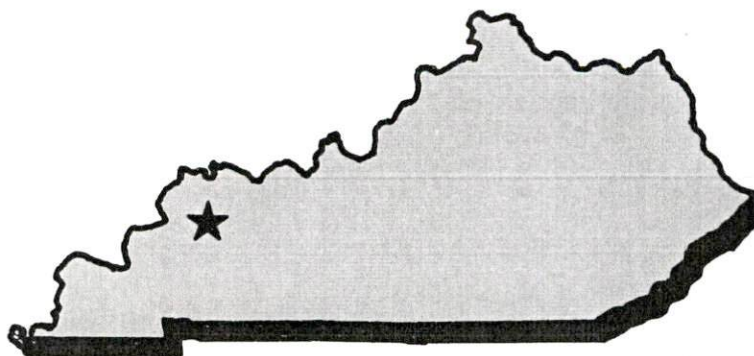
Trenton



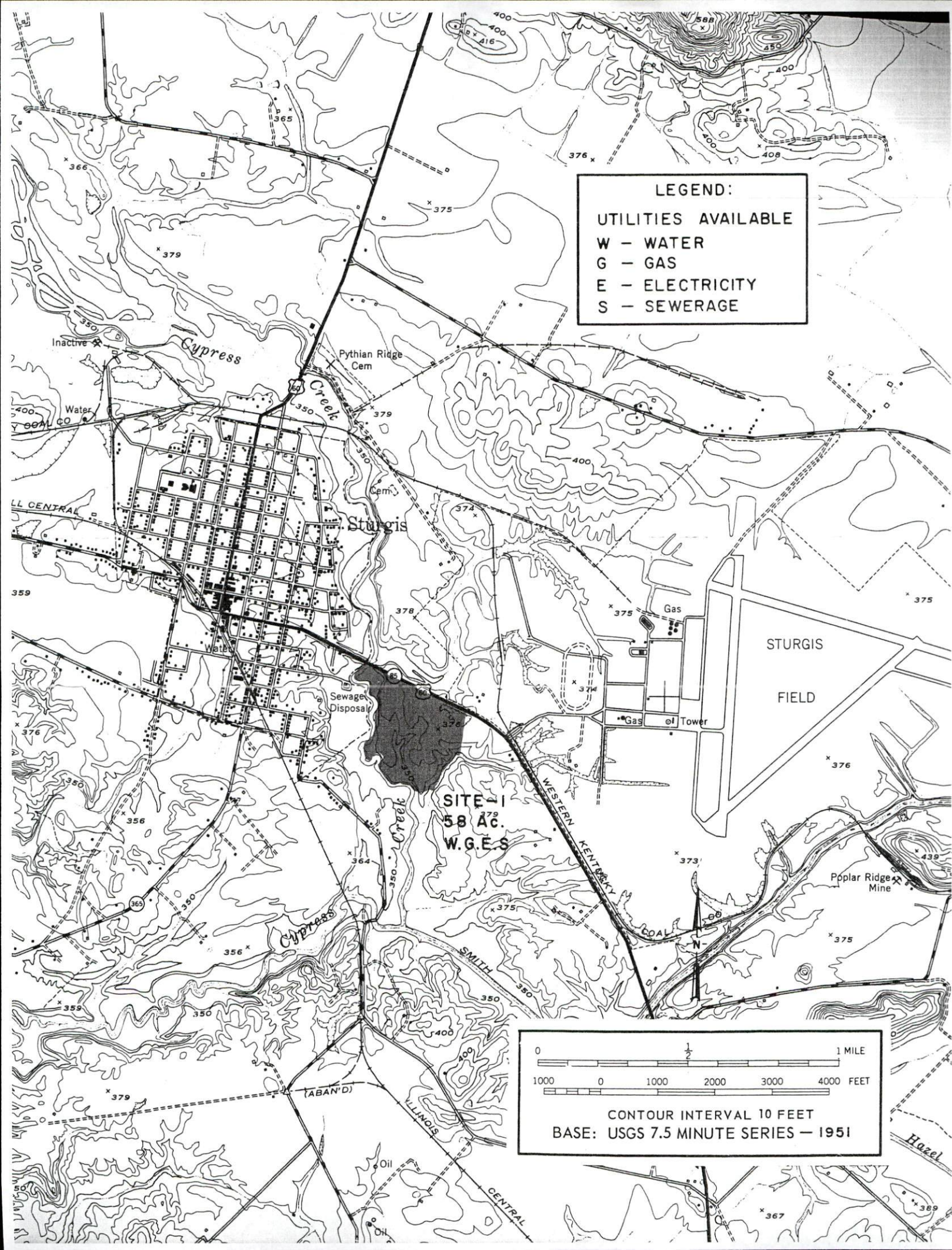
# YOUR GUIDE TO A

**KENTUCKY INDUSTRIAL SITE**

**STURGIS**  
HAS THE  
LOCATION







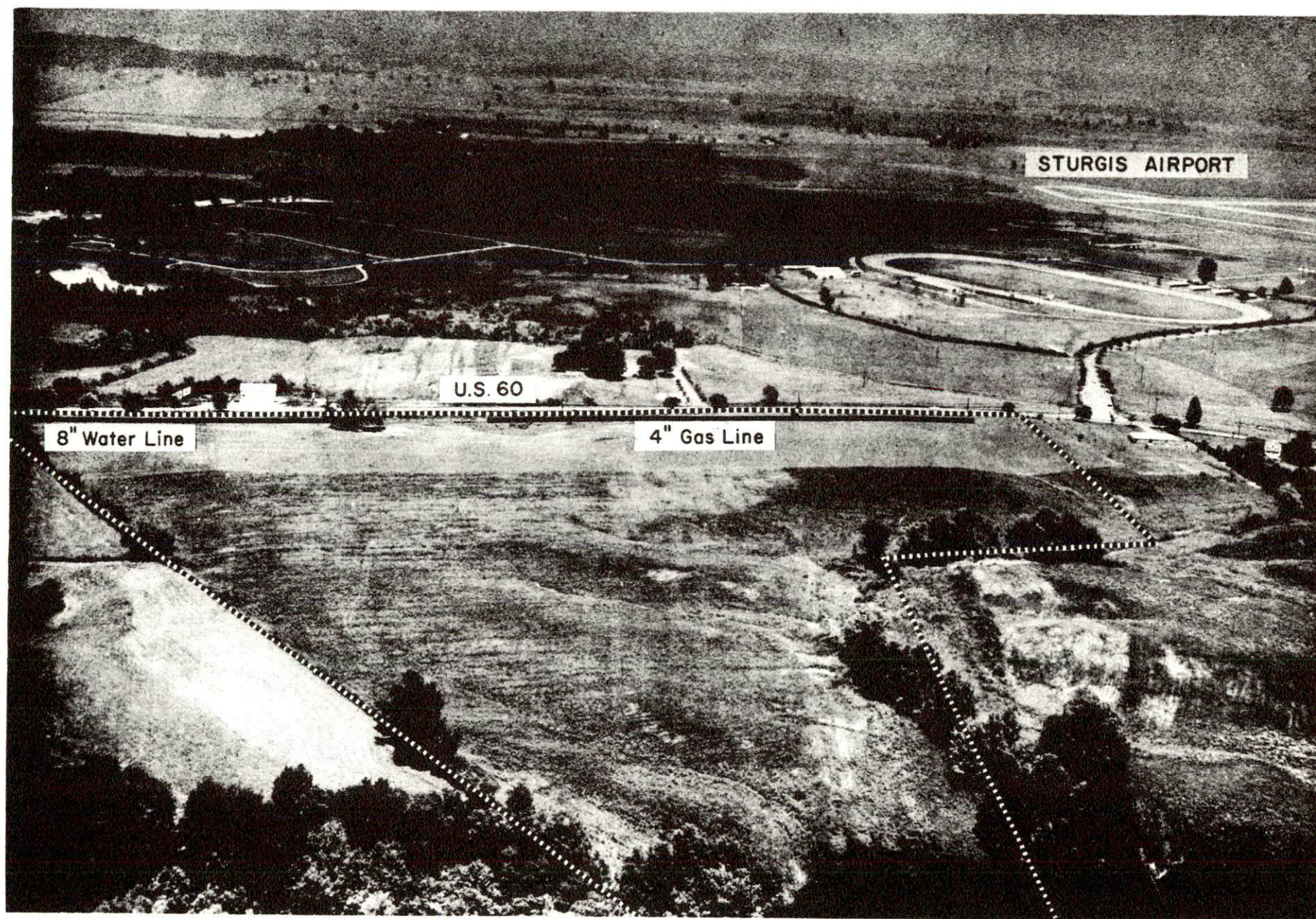
## STURGIS INDUSTRIAL FOUNDATION

The Sturgis Industrial Park, Inc. , a nonprofit organization, owns a 58-acre industrial site southeast of Sturgis. This site is fronted on U. S. 60 and U. S. 641 and Kentucky 109. The Illinois Central Railroad is nearby and rail siding is feasible.

Utilities available include electricity, an 8-inch water line, and a 4-inch high pressure gas line. Sewerage lines will be extended.

The price of this site, with all utilities available, is \$700 per acre.





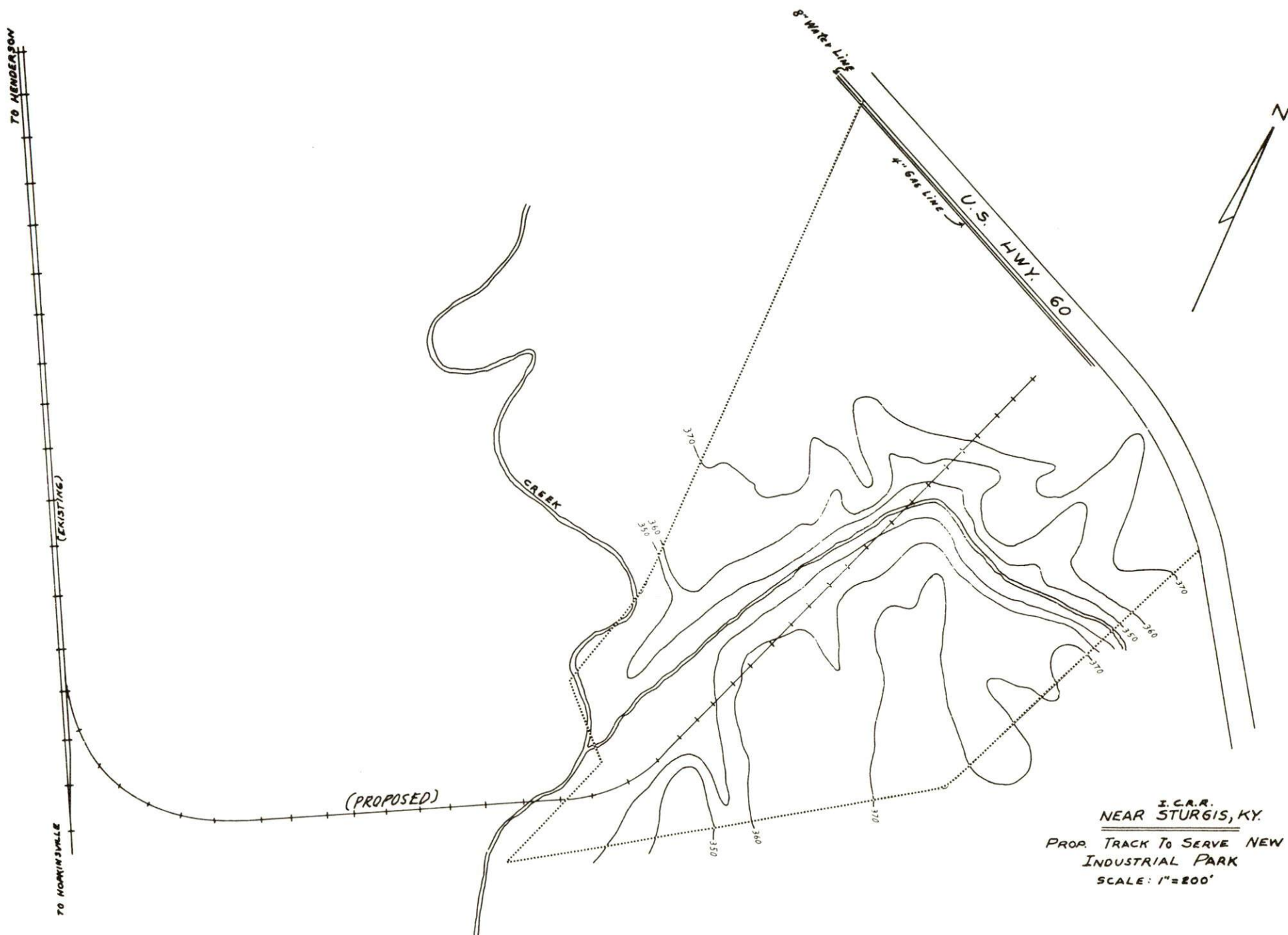
STURGIS AIRPORT

U.S. 60

8" Water Line

4" Gas Line





I.C.A.R.  
NEAR STURGIS, KY.  
PROP. TRACK TO SERVE NEW  
INDUSTRIAL PARK  
SCALE: 1"=200'

## STURGIS, KENTUCKY

### LOCATION:

Sturgis is located in the northwest portion of Kentucky, approximately 65 miles northeast of Paducah.

### POPULATION:

1960: Sturgis - 2,209

Union County - 14,537

### STURGIS LABOR SUPPLY AREA:

Includes Union and all adjoining counties. Estimated number of workers available for industrial jobs in the labor supply area: 2,200-2,600 men and 2,250-2,650 women. Number of workers available from Union County: 450-550 men and 500-600 women.

The future Sturgis area labor supply will include 3,696 boys and 3,527 girls who will become 18 years of age by 1973.

### TRANSPORTATION:

Railroads: The Illinois Central Railroad, operating between Evansville, Indiana, and Princeton, Kentucky, serves the Sturgis area with rail freight facilities.

Air: Sturgis Airport, with its three 5,000-foot paved runways, is available for use by private concerns. There are no scheduled commercial flights. The nearest major airport is Dress Memorial Airport at Evansville, Indiana, 44 miles distant. This field is served by Delta and Eastern Airlines.

Water: Water transportation facilities via the Ohio River are located at Caseyville, Kentucky, 5 miles distant, providing river facilities to all points on the inland waterway system in the United States.

Trucks: Interstate and intrastate trucking facilities are provided in Sturgis by three trucking firms.

Bus Lines: Southern Greyhound Bus Lines provides bus service to the Sturgis area.

Highways: Major highways serving Sturgis include U. S. Routes 60 and 641, and Kentucky Routes 109, 270, and 365.

HIGHWAY DISTANCES FROM STURGIS, KENTUCKY, TO:

<u>Town</u>	<u>Miles</u>	<u>Town</u>	<u>Miles</u>
Atlanta, Ga.	395	Louisville, Ky.	185
Birmingham, Ala.	358	Los Angeles, Calif.	2,586
Chicago, Ill.	346	Memphis, Tenn.	185
Cincinnati, Ohio	296	Minneapolis, Minn.	731
Cleveland, Ohio	507	Nashville, Tenn.	138
Detroit, Mich.	552	New Orleans, La.	638
Kansas City, Mo.	424	New York, N. Y.	951
Knoxville, Tenn.	334	Pittsburgh, Pa.	586
Lexington, Ky.	252	St. Louis, Mo.	176

UTILITIES:

Electricity:

City: Kentucky Utilities Company

County: Kentucky Utilities Company and the Henderson-Union RECC

Gas: The Texas Gas Transmission Corporation is the source of supply for the municipally owned and operated natural gas system.

Water: The Sturgis Water Works provides an adequate supply of water to Sturgis through its 650,000 gpd treatment plant. Peak daily use has been approximately 270,000 gallons.

Sewer System: The municipally owned Sturgis Sewer System consists of separate storm and sanitary sewers. Two Imhoff tanks are utilized for disposal.

HEALTH:

The Sturgis Hospital, a general short-term 25-bed hospital, was completed in 1956. Facilities include a nursery, operating room, laboratory, X-ray and emergency room. There is a full-time staff of two physicians and five registered nurses. The hospital also has access to the services of surgeons from Morganfield, Kentucky, and Evansville, Indiana. Sturgis also has the services of one dentist and one chiropractor.



## EDUCATION:

Sturgis is served by the Union County School System. The county schools include three elementary schools, two junior high schools, and one high school. The consolidated high school was opened in September of 1964 at a cost of \$1,500,000.

## RECREATION:

Local: The Union County Park and Airport, a 1,037-acre park, is located at the edge of the Sturgis city limits. This park has a grandstand with a seating capacity of 1,500 and a race track that is used for horse shows during the annual county fair. A drag strip for teen-agers has been set up on one of the airport runways under auspices of the local Kiwanis Club. Another feature of this park is its 24-acre lake which provides fishing, boating and swimming.

The City of Sturgis owns a 12-acre city park which is equipped with playground facilities. A Little League baseball and football team has been organized and play is conducted on a lighted field. A swimming pool which was completed in 1957 at a cost of \$40,000 as a project of the local Kiwanis Club is open to the public. Two tennis courts have recently been built near the swimming pool at a cost of \$17,000.

Area: Sturgis is located 45 miles from Kentucky Lake. Located on this lake are three state parks: Kentucky Lake State Park, Kentucky Dam Village State Park, and Cherokee State Park. From April to October, the lake is a paradise for fishermen, campers, hunters, boating, and water-skiing enthusiasts. Numerous local, state, and national conventions are held there annually.

Barkley Lake, only 1 mile east of Kentucky Lake, extends 117 miles towards Nashville on the Cumberland River. The two lakes will be connected by a canal and many facilities on Barkley Lake will be similar to those on Kentucky Lake.

Audubon State Park, located 41 miles from Sturgis, is noted for its historical museum. The park also offers cabins, picnic facilities, beach, bathhouse, and boating facilities.

Pennyryle Forest State Park, 45 miles from Sturgis at Dawson Springs, Kentucky, is located in the heart of a 15,000-acre forest. All types of recreation are available.

EXISTING INDUSTRY:

Firm	Product	Employment		
		Male	Female	Total
Fred Alloway	Lumber, building material, concrete	20	2	22
Franklin L. Collins	Mine materials	3	0	3
Duncan & Turner Lumber Co.	Lumber	7	0	7
Land-O-Nan Warehouse	Fertilizer	12	2	14
Morgan Concrete	Ready mixed concrete	6	0	6
Saturn Machine & Welding	Machine shop, hoppers, conveyors	6	0	6
Sturgis Clothing Co.	Men's clothing	9	126	135
Sturgis Concrete Products Co., Inc.	Concrete block, field tile	4	1	5
Sturgis Milling Co.	Feed	8	1	9
The Sturgis News	Newspaper, job printing	4	3	7

PREVAILING WAGE RATES:

<u>Production Employees</u>	<u>Wages Per Hour</u>
Assembler	\$2.00
Drill Press Operator	2.50
Lathe Operator	2.50
Production Laborer	1.40
Punch Press Operator	2.00
Sprayer or Painter	2.00
Welder, Arc or Acetylene	2.00
<u>Service Employees</u>	
Carpenter	\$2.00
Electrician	2.25
Laborer	1.40
Machinist	2.00
Truck Driver	1.40
Tool, Die or Gauge Maker	3.50



Office Employees

Draftsman	\$2.50
Key Punch Operator	2.00
Secretary	1.40
Stenographer	1.40
Tabulating Machine Operator	1.50
Typist	1.40

UNIONS:

The only union represented in Union County is the United Mine Workers of America.

For detailed information concerning Sturgis  
please request publication "Industrial Resources,  
Sturgis, Kentucky."

This copy has been prepared by the Kentucky Department of Commerce,  
Division of Research, and the cost of printing paid from state funds.

# MAJOR HIGHWAY NETWORK IN KENTUCKY

Compiled By  
KENTUCKY DEPARTMENT  
OF  
COMMERCE

Frankfort, Kentucky  
SEPT. 1966

## LEGEND

INTERSTATE and PARKWAYS

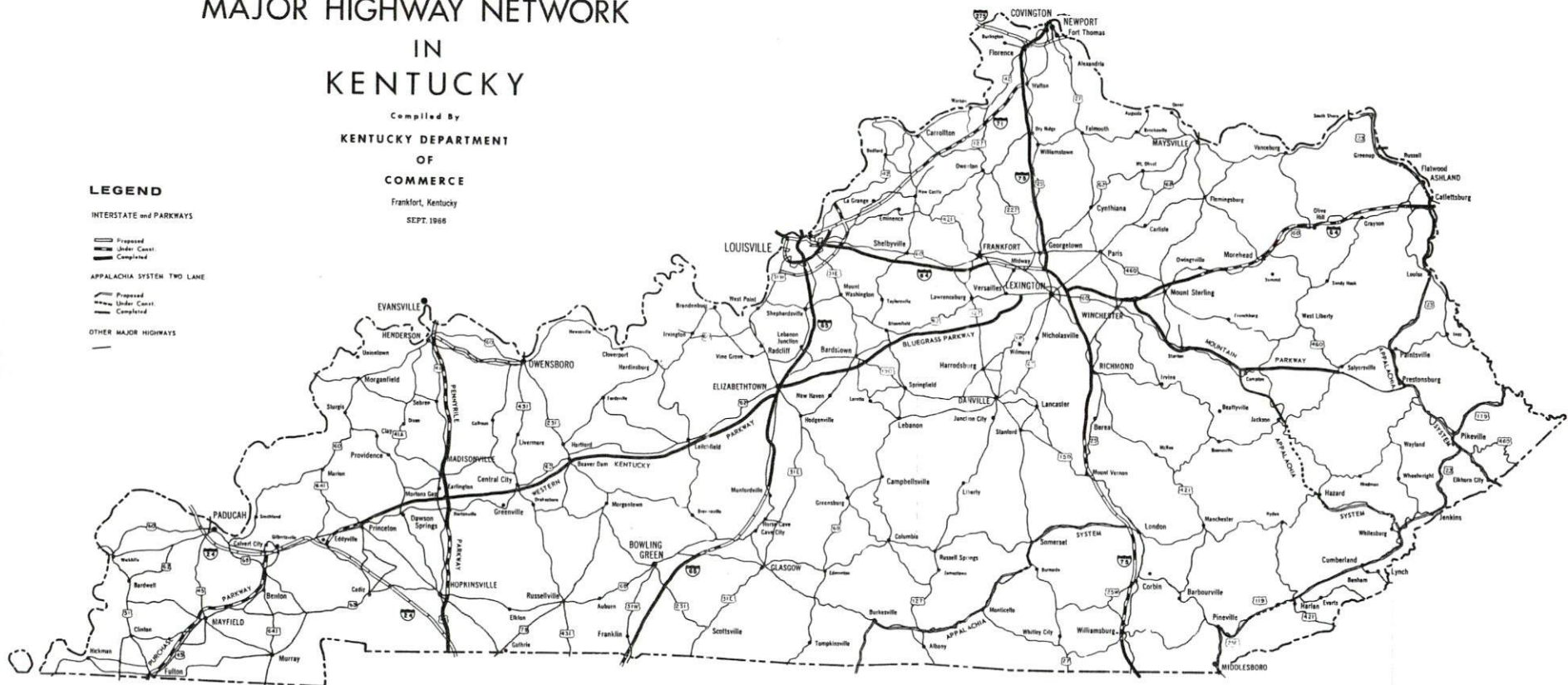
Proposed  
Under Const.  
Completed

APPALACHIA SYSTEM TWO-LANE

Proposed  
Under Const.  
Completed

OTHER MAJOR HIGHWAYS

MAJOR HIGHWAY NETWORK







PREPARED BY  
KENTUCKY DEPARTMENT OF COMMERCE  
FRANKFORT, KENTUCKY

AND

STURGIS INDUSTRIAL PARK, INC.

1967