

1984

## Industrial Resources: Wolfe County - Campton

Kentucky Library Research Collections  
Western Kentucky University, [spcol@wku.edu](mailto:spcol@wku.edu)

Follow this and additional works at: [https://digitalcommons.wku.edu/wolfe\\_cty](https://digitalcommons.wku.edu/wolfe_cty)



Part of the [Business Administration, Management, and Operations Commons](#), [Growth and Development Commons](#), and the [Infrastructure Commons](#)

---

### Recommended Citation

Kentucky Library Research Collections, "Industrial Resources: Wolfe County - Campton" (1984). *Wolfe County*. Paper 7.  
[https://digitalcommons.wku.edu/wolfe\\_cty/7](https://digitalcommons.wku.edu/wolfe_cty/7)

This Report is brought to you for free and open access by TopSCHOLAR®. It has been accepted for inclusion in Wolfe County by an authorized administrator of TopSCHOLAR®. For more information, please contact [topscholar@wku.edu](mailto:topscholar@wku.edu).

12  
431  
Wolfe County

RESOURCES  
FOR  
ECONOMIC  
DEVELOPMENT

**CAMPTON**



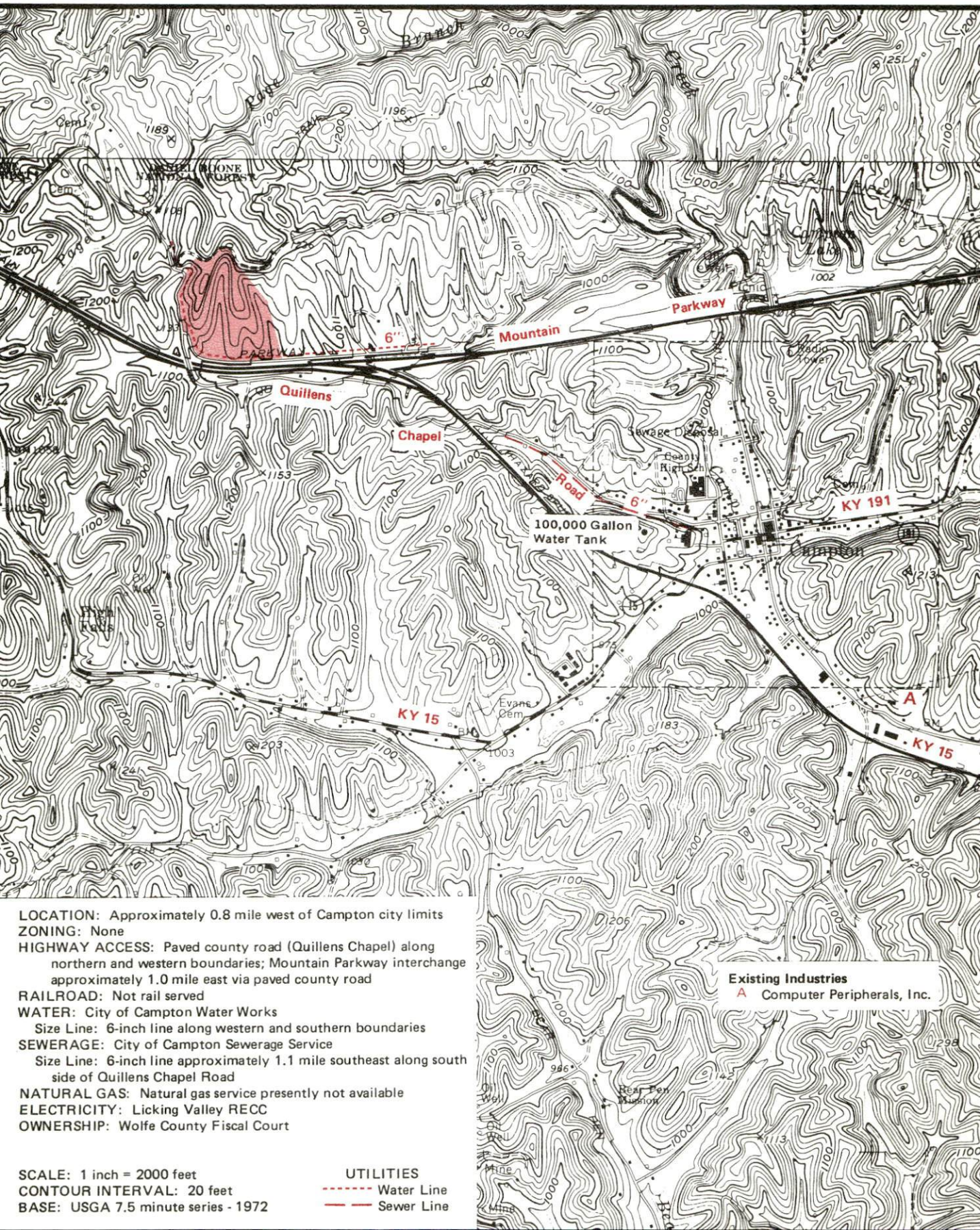
**KENTUCKY**

The Business Environment is Right



# CAMPTON, KENTUCKY --- Site 184 --- 40 Acres

For more information contact the Kentucky Department of Economic Development, Industrial Development & Marketing Division, Capital Plaza Tower, Frankfort, Kentucky 40601 (502-564-7140).



**LOCATION:** Approximately 0.8 mile west of Campton city limits

**ZONING:** None

**HIGHWAY ACCESS:** Paved county road (Quillens Chapel) along northern and western boundaries; Mountain Parkway interchange approximately 1.0 mile east via paved county road

**RAILROAD:** Not rail served

**WATER:** City of Campton Water Works

Size Line: 6-inch line along western and southern boundaries

**SEWERAGE:** City of Campton Sewerage Service

Size Line: 6-inch line approximately 1.1 mile southeast along south side of Quillens Chapel Road

**NATURAL GAS:** Natural gas service presently not available

**ELECTRICITY:** Licking Valley RECC

**OWNERSHIP:** Wolfe County Fiscal Court

**SCALE:** 1 inch = 2000 feet

**CONTOUR INTERVAL:** 20 feet

**BASE:** USGA 7.5 minute series - 1972

## UTILITIES

----- Water Line

----- Sewer Line

## Existing Industries

A Computer Peripherals, Inc.



RESOURCES FOR ECONOMIC DEVELOPMENT  
CAMPTON, KENTUCKY

Prepared by  
The Kentucky Department of Economic Development  
Division of Research and Planning  
in cooperation with  
The City of Campton

1984

Program manager - Pamela Riley; research - James R. Thompson; clerical - Bobbi Graves; graphics - Frank Ferrante, Tony Cecconi, Robert Owens; cartography - Site Evaluation Branch, Division of Industrial Development and Marketing. Cost of printing paid from state funds.

## TABLE OF CONTENTS

<u>Chapter</u>	<u>Page</u>
INDUSTRIAL SITES .....	i
CAMPTON, KENTUCKY - A RESOURCE PROFILE .....	1
THE LABOR MARKET AREA .....	3
Population .....	3
Labor Force Characteristics of Residents, 1983 .....	3
Selected Components of Nonagricultural Employment, by Place of Work, 1983 .....	4
Wolfe County Manufacturing Firms, Their Products and Employment .....	4
Labor Organizations in Manufacturing Firms .....	4
Industrial Services .....	5
Estimated Male Labor Supply .....	6
Estimated Female Labor Supply .....	6
Average Weekly Wages By Industry, by Place of Work, 1983 .....	7
Per Capita Personal Income .....	9
TRANSPORTATION .....	10
Rail .....	10
Highways .....	10
Truck Service .....	11
Air .....	12
Bus .....	12
Rental Services .....	12
Water .....	12
POWER AND FUEL .....	13
Electricity .....	13
Natural Gas .....	13
Other Fuels .....	13
WATER AND SEWERAGE .....	14
Public Water Supply .....	14
Raw Water .....	14
Sewerage .....	14
CLIMATE .....	15

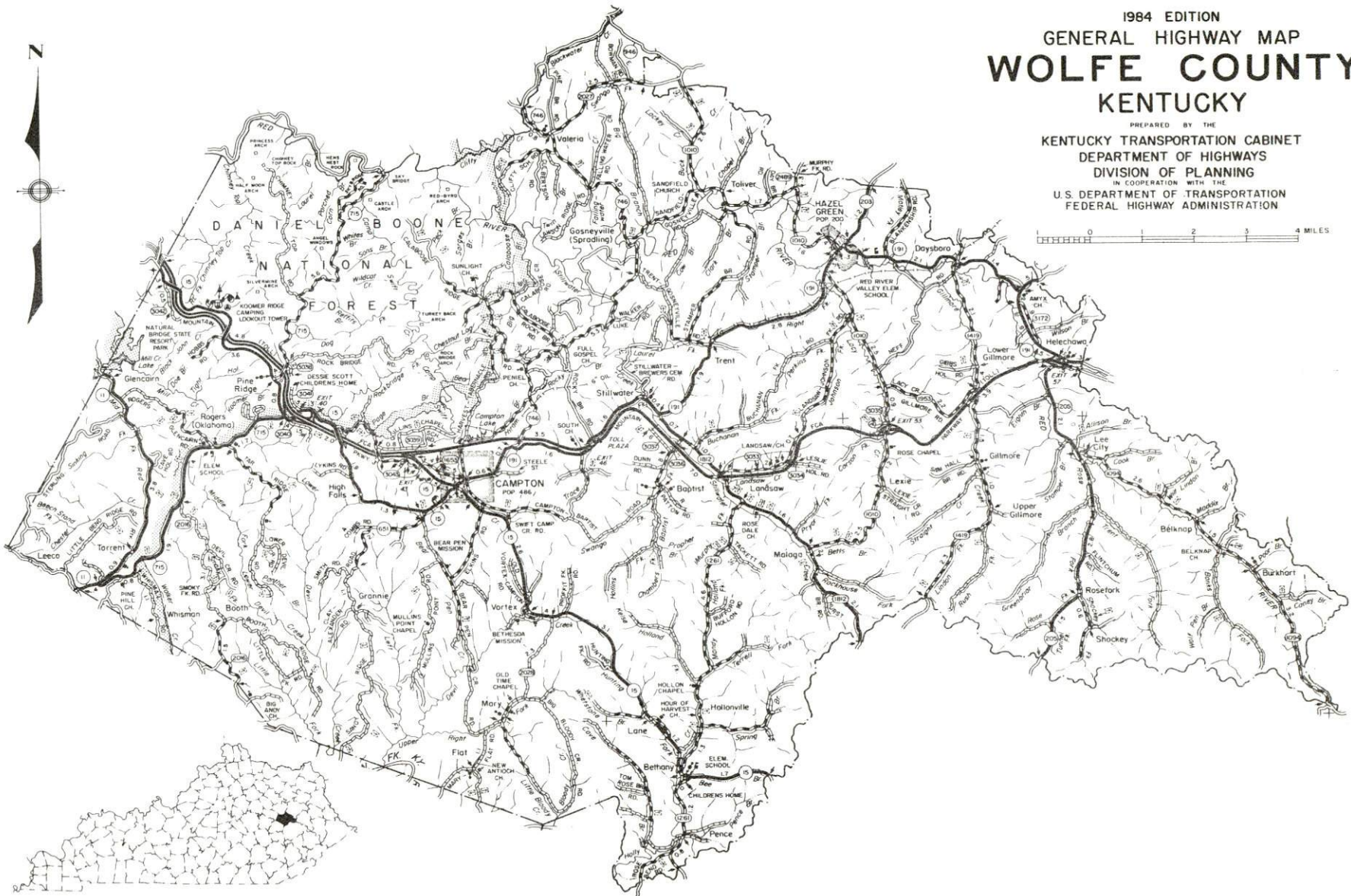
<u>Chapter</u>	<u>Page</u>
LOCAL GOVERNMENT .....	16
City .....	16
County .....	16
Assessed Value of Property, 1984 .....	16
Property Taxes .....	16
Combined State and Local Rates Per \$100 Valuation, 1983 .....	17
Planning and Zoning .....	17
Safety .....	17
Police .....	17
Fire .....	17
Refuse Collection and Disposal .....	18
EDUCATION .....	19
Public Schools .....	19
Nonpublic Schools .....	19
Area Colleges and Universities .....	20
Vocational Schools .....	21
HEALTH .....	23
Local Medical Personnel .....	23
Hospitals .....	23
Other Medical Facilities .....	23
Ambulance Service .....	23
Public Health .....	23
OTHER LOCAL FACILITIES .....	24
Communications .....	24
Library Services .....	24
Religious Institutions .....	25
Financial Institutions .....	25
Clubs and Organizations .....	25
RECREATION .....	26
COMMUNITY IMPROVEMENTS .....	28



1984 EDITION  
GENERAL HIGHWAY MAP  
**WOLFE COUNTY**  
**KENTUCKY**

PREPARED BY THE  
KENTUCKY TRANSPORTATION CABINET  
DEPARTMENT OF HIGHWAYS  
DIVISION OF PLANNING  
IN COOPERATION WITH THE  
U.S. DEPARTMENT OF TRANSPORTATION  
FEDERAL HIGHWAY ADMINISTRATION

0 1 2 3 4 MILES





**CAMPTON LABOR MARKET AREA**  
 With  
**MAJOR HIGHWAYS & RAILROAD SYSTEM**

Shaded area denotes Labor Market Area

The map displays the Campton Labor Market Area, which is shaded in gray. This area includes parts of several counties, notably Menifee, Morgan, and Wolfe. The map shows a dense network of major highways (indicated by solid lines with route numbers) and the railroad system (indicated by dashed lines). Numerous cities and towns are labeled throughout the region, including Louisville, Lexington, Frankfort, and many others. County names are also clearly marked. An inset map in the top left corner shows the outline of the state of Kentucky, with the study area highlighted in the eastern part of the state.

## **CAMPTON, KENTUCKY - A RESOURCE PROFILE**

Campton, the county seat of Wolfe County, is located in the western part of the Eastern Kentucky Coal Field. Campton is located 66 miles southeast of Lexington, Kentucky; 139 miles southeast of Louisville, Kentucky; 143 miles southeast of Cincinnati, Ohio; and 205 miles northeast of Knoxville, Tennessee. Campton had an estimated population of 493 in 1982.

Wolfe County covers a total land area of 223 square miles. Wolfe County is characterized by narrow, cliff-rimmed, flat-topped ridges in the northwest and in other parts of the county the slopes are not as steep, but the ridge tops are essentially the same. In 1982, Wolfe County had an estimated population of 6,800.

### **The Economic Framework**

The total number of Wolfe County residents employed in 1983 averaged 1,760, with nonagricultural jobs accounting for 1,600 workers. Manufacturing employers in the county reported 320 workers; state and local government 280; wholesale and retail trade 160; and services 80. Manufacturing employment is greatest in electric and electronic equipment industry.

Per capita personal income in 1982 was \$5,303. Between 1978 and 1982 per capita income increased by 43 percent.

The Campton labor market area includes Wolfe County and the six adjoining counties. The total number of residents of the labor market area employed in 1983 averaged 24,950, with nonagricultural jobs accounting for 24,010 workers. Manufacturing employers in the area reported 1,940 workers; state and local government 2,670; wholesale and retail trade 1,900; and services 1,240.

### **Resources for Growth**

1. Labor Supply - There is a current labor supply of 7,450 men and 7,190 women available for industrial jobs in the labor market area. In addition, from 1984 through 1988, 3,600 young men and 3,350 young women in the area will become 18 years of age and potentially available for work.

2. Transportation - The Seaboard System Railroad provides rail service at Jackson, 20 miles southeast of Campton. Campton is served directly by Kentucky Highway 15, a "AAA"-rated trucking highway. The Mountain Parkway, a multilane toll road is located one mile north of Campton. Interstate 64 is located 44 miles northwest of Campton via the Mountain Parkway. Three common carriers have the authority to serve Campton. The nearest commercial airport, Blue Grass Field near Lexington, is located 71 miles northwest of Campton. The Stanton Airport, 22 miles northwest of Campton, has a 3,000-foot paved runway to accommodate small aircraft.



3. Power and Fuel - Electric power is provided to Campton and Wolfe County by the Licking Valley Rural Electric Cooperative Corporation, which is supplied by the East Kentucky Power Cooperative Corporation. Natural gas service is not available in Campton at the present time. Three distributors of propane and four distributors of distillate fuel oil serve Campton.

4. Education - Primary and secondary education is provided to Campton and Wolfe County by the Wolfe County School System.

Four universities, three community colleges and one junior college are located within 70 miles of Campton.

The Mayo State Vocational-Technical School in Paintsville, 48 miles east, offers training in 27 courses and the Hazard State Vocational-Technical School in Hazard, 52 miles southeast, offers training in 19 courses. The Breathitt County Area Vocational Education Center in Jackson, 20 miles southeast, offers training in nine courses.



## THE LABOR MARKET AREA

The Campton Labor Market Area includes Wolfe County and the adjoining Kentucky counties of Breathitt, Lee, Magoffin, Menifee, Morgan and Powell.

POPULATION				
Area	1982*	1980	1970	Percent Nonwhite 1980
Campton	493	486	419	0.4
Labor Market Area	74,100	73,292	58,693	N/A
Wolfe County	6,800	6,698	5,669	0.2
Breathitt County	16,900	17,004	14,221	0.5
Lee County	7,700	7,754	6,587	0.5
Magoffin County	13,800	13,515	10,443	0.2
Menifee County	5,300	5,117	4,050	1.3
Morgan County	12,200	12,103	10,019	0.4
Powell County	11,400	11,101	7,704	1.2

\* Population estimates.

Note: The 1980 city counts of population by race are provisional.

Sources: U.S. Department of Commerce, Bureau of the Census, 1980 Census of Population and Housing, March 1981; 1980 Census of Population, Number of Inhabitants; Local Population Estimates, Series P-26, June 1984, September 1984.

LABOR FORCE CHARACTERISTICS OF RESIDENTS, 1983		
	Wolfe County	Labor Market Area
Civilian Labor Force	2,236	30,004
Employment	1,764	24,949
Agricultural	163	938
Nonagricultural	1,601	24,011
Unemployment	472	5,055
Rate of Unemployment (%)	21.1	16.8

Source: Kentucky Cabinet for Human Resources, Kentucky Labor Force Estimates, Annual Averages, 1983.

SELECTED COMPONENTS OF NONAGRICULTURAL EMPLOYMENT,  
BY PLACE OF WORK, 1983

	<u>Wolfe County</u>	<u>Labor Market Area</u>
All Industries (total)	958	10,863
Manufacturing	323	1,937
Wholesale & Retail Trade	157	1,896
Services	84	1,241
State/Local Government	279	2,670

Note: Excludes domestic workers, railway workers, certain nonprofit corporations, majority of federal government workers, and self-employed workers.

Source: Kentucky Cabinet for Human Resources, Average Monthly Workers Covered by Kentucky Unemployment Insurance Law, 1983.

WOLFE COUNTY MANUFACTURING FIRMS,  
THEIR PRODUCTS AND EMPLOYMENT

<u>Firm</u> (Establishment date)	<u>Product</u>	<u>Employment</u>		
		<u>Total</u>	<u>Male</u>	<u>Female</u>
<b>Campton</b>				
Computer Peripherals, Inc. (1969)	Printed circuit board assembly and testing, computer wire preparation and cabling	280	60	220
<b>Hazel Green</b>				
Ken Wood Pallet Company (1968)	Wood pallets and skids, lumber	54	50	4
<b>Pine Ridge</b>				
Spencer Saw Mill (1966)	Rough lumber, crossties	11	11	--

Sources: Kentucky Department of Economic Development, 1984 Kentucky Directory of Manufacturers; Division of Research and Planning.

LABOR ORGANIZATIONS IN MANUFACTURING FIRMS

There are no unions representing manufacturing firms in Wolfe County at the present time.

## INDUSTRIAL SERVICES

<u>Types of Services</u>	<u>Location</u>	<u>Mileage from Campton</u>
Custom Plastics Producers	Irvine	41
	Mt. Sterling	42
	Winchester	47
Electric Motor Repair	Winchester	47
	Lexington	66
Grinding, Precision & Tool	Winchester	47
	Richmond	62
Heat Treating Facilities	Richmond	62
	Lexington	66
Industrial Equipment & Supplies	Lexington	66
Industrial Gases	Richmond	62
	Lexington	66
Industrial Waste Removal	Lexington	66
Machine Shops, Tool & Die	Mount Sterling	42
	Winchester	47
	Paintsville	48
Metal Finishers	Winchester	47
	Richmond	62
	Lexington	66
Metal Service Centers	Lexington	66
Millwrights	Lexington	66

Sources: Kentucky Department of Economic Development, Kentucky Directory of Selected Industrial Services, 1983; Division of Research and Planning.



ESTIMATED MALE LABOR SUPPLY  
CAMPTON LABOR MARKET AREA

Area	Current				Future
	Total	Unemployed	Under-employed	Not in Labor Force	Becoming 18 years of age 1984 thru 1988
Labor Market					
Area*	7,451	3,715	1,582	2,154	3,596
Wolfe	992	324	126	542	309
Breathitt	1,063	700	363	0	809
Lee	1,245	317	207	721	378
Magoffin	1,086	514	172	0	723
Menifee	855	236	81	538	252
Morgan	1,211	743	460	8	551
Powell	999	481	173	345	574

\* Additional workers may be drawn from other nearby counties.

Note: Unemployed - persons unemployed and actively seeking work;  
Underemployed - persons employed but working only 14 to 26 weeks per year;  
Not in Labor Force - represents the number of persons who would enter the labor force if suitable employment were available (based on the assumption that persons in Kentucky would like to participate in the labor force in the same proportion that they do nationally).

Sources: Kentucky Cabinet for Human Resources, Kentucky Labor Supply Estimates by County, 1983. Kentucky Department of Economic Development, Future Labor Supply Becoming 18 Years of Age, 1984 thru 1988.

ESTIMATED FEMALE LABOR SUPPLY  
CAMPTON LABOR MARKET AREA

Area	Current				Future
	Total	Unemployed	Under-employed	Not in Labor Force	Becoming 18 years of age 1984 thru 1988
Labor Market					
Area*	7,187	1,340	1,039	4,808	3,349
Wolfe	762	148	82	532	275
Breathitt	1,376	253	214	909	812
Lee	1,043	86	131	826	340
Magoffin	1,273	263	142	868	710
Menifee	730	158	62	510	212
Morgan	1,096	173	178	745	507
Powell	907	159	230	418	493

\* Additional workers may be drawn from other nearby counties.

Note: Unemployed - persons unemployed and actively seeking work;  
Underemployed - persons employed but working only 14 to 26 weeks per year;  
Not in Labor Force - represents the number of persons who would enter the labor force if suitable employment were available (based on the assumption that persons in Kentucky would like to participate in the labor force in the same proportion that they do nationally).

Sources: Kentucky Cabinet for Human Resources, Kentucky Labor Supply Estimates by County, 1983. Kentucky Department of Economic Development, Future Labor Supply Becoming 18 Years of Age, 1984 thru 1988.

AVERAGE WEEKLY WAGES BY INDUSTRY,  
BY PLACE OF WORK, 1983

	<u>Wolfe County</u>	<u>Breathitt County</u>	<u>Lee County</u>	<u>Magoffin County</u>
All Industries	\$ 223.74	\$403.27	\$249.42	\$314.63
Mining & Quarrying	*	*	380.97	505.86
Contract Construction	0	231.72	228.73	185.80
Manufacturing	*	*	*	*
Transportation, Communications & Public Utilities	260.33	350.49	387.29	295.51
Wholesale & Retail Trade	162.87	200.01	206.58	165.63
Finance, Insurance & Real Estate	*	345.31	*	326.15
Services	134.73	180.83	189.71	179.86
State/Local Government	237.67	288.87	242.82	245.98
Other	0	*	*	0
	<u>Menifee County</u>	<u>Morgan County</u>	<u>Powell County</u>	
All Industries	\$ 216.10	\$234.93	\$230.65	
Mining & Quarrying	*	415.63	431.45	
Contract Construction	0	206.27	268.05	
Manufacturing	139.17	165.91	235.40	
Transportation, Communications & Public Utilities	153.79	301.76	308.14	
Wholesale & Retail Trade	195.27	186.75	152.30	
Finance, Insurance & Real Estate	*	254.76	*	
Services	126.41	216.96	166.71	
State/Local Government	255.32	270.72	244.44	
Other	0	114.16	*	

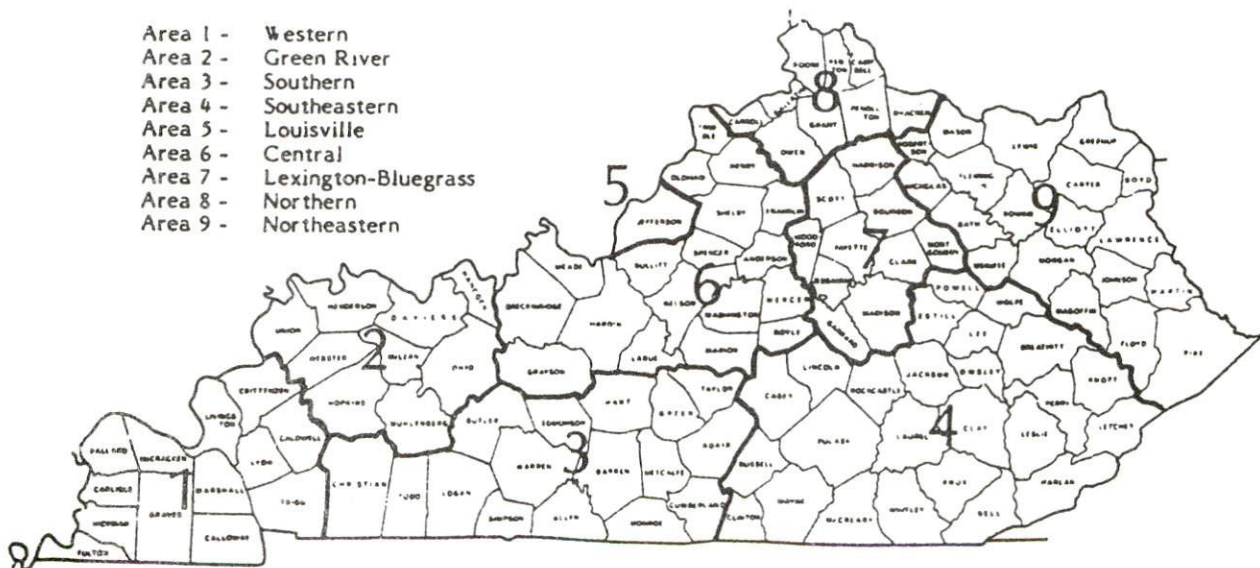
\* Not disclosed.

Note: Excludes domestic workers, railway workers, certain nonprofit corporations, majority of federal government workers, and self-employed workers.

Source: Kentucky Cabinet for Human Resources, Average Weekly Wages of Workers Covered by Kentucky Unemployment Insurance Law, 1983.

Occupational wage rates for specific industries are usually not available to most government agencies, and wage data furnished to state employment agencies by individual industrial employers are protected from disclosure by federal law. The most reliable up-to-date wage information can be obtained by direct contact with local employers.

Associated Industries of Kentucky, a voluntary organization of Kentucky businesses, regularly collect occupational wage rates and fringe benefits data from participating member firms. Data are compiled for over 127 clearly defined office, production, and service occupations. Tabulations are published for nine geographical areas of Kentucky, as shown on the map below. It should be noted that the data may be weighted by the preponderance of firms in the larger cities and may be somewhat higher than the rates paid in the smaller communities. Data from these tabulations are available, upon request, from the Kentucky Department of Economic Development, Frankfort, Kentucky 40601.



Associated Industries of Kentucky Area Wage Surveys



PER CAPITA PERSONAL INCOME

<u>Area</u>	<u>1978</u>	<u>1982</u>	<u>Percent Change</u>
Wolfe County	\$ 3,718	\$ 5,303	42.6
Labor Market Area Range	\$3,240 - 4,266	\$ 4,575 - 5,948	N/A
Kentucky	6,389	8,893	39.2
U. S.	7,776	11,100	42.7

Sources: U.S. Department of Commerce, Bureau of Economic Analysis, Survey of Current Business, April 1983; Commerce News, April 29, 1984. Kentucky Economic Information System, July 1984.

## TRANSPORTATION

### Rail

**Campton** is not served directly by rail. The nearest rail service is provided by Seaboard System Railroad at Jackson, 20 miles southeast of Campton.

Services at Jackson - Main line; 3 southbound and 2 northbound freights stop weekly; an average of 3 southbound and 3 northbound through freights daily; switching services with a switch engine stationed locally; team track space for 10 cars; siding space for 50 cars. The nearest piggyback services are available at Frankfort, 89 miles northwest of Campton\*.

For details on routing, schedules, rates, and services, contact:

Manager of Industrial Development  
Seaboard System Railroad  
P.O. Box 32290  
Louisville, Kentucky 40232  
(502) 587-5228

### Highways

Campton is served directly by the Mountain Parkway, a multilane toll road, and by Kentucky 15, a "AAA"-rated (80,000-pound gross load limit) trucking highway. Interstate 64 is located 44 miles northwest of Campton via the Mountain Parkway. The Daniel Boone Parkway, a multilane toll road, is located 48 miles southeast of Campton.

---

\* The nearest piggyback service is available at Frankfort, 89 miles from Campton. Seaboard provides piggyback service from Frankfort through the Louisville ramp with highway service substituted for rail between the two cities. Rates are charged from Frankfort.

## Truck Service

### Company

Bestway Express, Inc.\*  
Hazard Express, Inc.\*  
Overnite Transportation  
Company\*

### Home Office

Nashville, Tennessee 37210  
Hazard, Kentucky 41701  
  
P.O. Box 1216  
Richmond, Virginia 23209

\* Interstate and intrastate service.

Source: American Motor Carrier Directory, Fall 1984.

### Other Freight Services

Emery  
Federal Express  
Purolator Courier  
United Parcel Service

### Nearest Office or Shipping Center

Lexington, 66 miles northwest  
Lexington, 66 miles northwest  
Lexington, 66 miles northwest  
Clay City, 27 miles northwest

## HIGHWAY MILES AND TRUCK TRANSIT TIME IN DAYS FROM CAMPTON, KENTUCKY, TO SELECTED MARKET CENTERS

City	Highway Miles	Delivery Time TL	City	Highway Miles	Delivery Time TL
Atlanta, Ga.	398	4	Los Angeles, Ca.	2,246	5
Baltimore, Md.	544	4	Louisville, Ky.	139	1
Birmingham, Ala.	459	4	Nashville, Tenn.	276	2
Chicago, Ill.	418	3	New Orleans, La.	793	5
Cincinnati, Ohio	143	1	New York, N. Y.	716	4
Cleveland, Ohio	383	3	Pittsburgh, Pa.	376	4
Detroit, Mich.	403	3	St. Louis, Mo.	401	3
Knoxville, Tenn.	205	1			

Note: Mileage computations are via the best interstate or primary highways, not necessarily the most direct route of travel.

Sources: Rand McNally Road Atlas, 1979. Official Kentucky Mileage Map, 1980.  
Delivery time - Hazard Express, Inc., Hazard, Kentucky 41701.



## Air

### Local

Location: Stanton Airport  
22 miles northwest of Campton  
Runways: 1 paved  
Length: 3,000 feet  
Traffic  
Control: Wind sock; intercom; rotating beacon  
Lighting: Lighted runway  
Services: 100LL fuel; tie downs; hangar

### Nearest Scheduled Commercial Airline Service

Location: Blue Grass Field  
5 miles west of Lexington, Kentucky;  
71 miles northwest of Campton  
Runways: 2 paved  
Length: 6,500 feet; 3,500 feet  
Traffic  
Control: Tower  
Lighting: Approach lighting system, beacon, runways and  
obstructions lighted, VASI  
Services: Delta, Piedmont, United, USAir, Allegheny Commuter,  
Comair, Tennessee Airways; fuel - 100LL and  
jet-A; hangars, tie-downs; major A & P repairs;  
major Avionics repairs; APU, charter, flight  
instruction, oxygen, plane rentals, survival  
equipment; taxi, limousine, car rentals, courtesy  
car, weather information; restaurant, snack bar  
Air Freight  
Service: Air freight terminal

### **Bus - Greyhound Bus Lines**

**Rental Services** - Trailer rental service is available locally. Car and truck rental service is available at Winchester, 47 miles northwest of Campton.

## Water

Access to the inland waterways is available via the Big Sandy River, 79 miles northeast of Campton at Louisa, and the Kentucky River at Frankfort, 89 miles northwest of Campton. A 6-foot navigation channel is maintained on the Big Sandy River for a distance of approximately 10 miles, then it becomes a 9-foot channel and continues to its confluence with the Ohio River. A 6-foot navigation channel is maintained on the Kentucky River from Frankfort to Carrollton, where a 9-foot navigation channel is maintained to the Ohio River.

## POWER AND FUEL

### Electricity

Company serving **Campton and Wolfe County** - Licking Valley Rural Electric Cooperative Corporation  
Source of power - East Kentucky Power Cooperative Corporation  
Total generating capacity - 1,309,000 KW\*  
For industrial rates contact:

Industrial Development Division  
East Kentucky Power Cooperative  
P.O. Box 707  
Winchester, Kentucky 40391  
(606) 744-4812

### Natural Gas

Natural gas service is not available in Campton at the present time.

### Other Fuels (Within 35 miles)

#### Propane

Buckeye Gas Products  
P.O. Box 537  
Beattyville, Kentucky 41311

Finch Gas and Appliances  
U.S. 460 West  
West Liberty, Kentucky 41472

Empire Gas, Inc., of Jackson  
329 Broadway  
Jackson, Kentucky 41339

#### Fuel oils

Distillate fuel oil -

Beattyville Gas and Oil, Inc.  
Main Street  
Beattyville, Kentucky 41311

Rogers Oil Company  
Highway 11  
Beattyville, Kentucky 41311

Breathitt County Oil Company  
Highway 15  
Jackson, Kentucky 41339

Sun Oil Company  
Route 1  
Campton, Kentucky 41301

Residual fuel oil - Arrangements must be made with the refinery.

Low sulphur content coal - Available locally in eastern Kentucky.

\* East Kentucky Power Cooperative's total generating capacity will be increased when a new 650,000 KW coal-fired generation plant is completed in southeast Clark County in 1992.

## WATER AND SEWERAGE

### Public Water Supply

Company serving **Campton** - City of Campton Waterworks  
P.O. Box 35  
Campton, Kentucky 41301  
(606) 668-3574

Source - Wolfe Lake

Treatment plant capacity - 415,000 gallons per day

Average daily consumption - 140,000 gallons

Peak daily consumption - 189,000 gallons

Type treatment - Chlorination, filtration

Storage capacity - 415,000 gallons

Size lines - 4, 6 and 8 inches

Average pressure - 70 psi

Average temperature - 58 degrees F.

### MONTHLY WATER RATES

First	2,000 gallons	\$8.00	(Minimum)
Next	2,000 gallons	2.50	per M gallons
Next	5,000 gallons	2.20	per M gallons
Next	10,000 gallons	2.00	per M gallons
All over	19,000 gallons	1.50	per M gallons

Tap-on charge: \$200

### Raw Water

Surface water source - Red River

Average discharge - Red River near Hazel Green - 88.8 cfs (USGS, 29-year record)

Expected ground water yield - 50-200 gpm in the central and eastern portion of the county; 5-50 gpm along the southern edge and western portion of the county; and 5 gpm or less along the north central portion of the county

### Sewerage

Company serving **Campton** - City of Campton Sewerage System  
P.O. Box 35  
Campton, Kentucky 41301  
(606) 668-3574

Design capacity - 100,000 gallons per day

Average daily flow - 45,000 gallons

Type of treatment - Secondary

Treatment process - Aeration

Treated effluent discharged into - Swift Creek

Size of sanitary mains - 8 inches

Size of storm mains - 12 inches

Monthly rates - 100% of monthly water bill

Tap-on charge: \$50.00



## CLIMATE

### Wolfe County\*

#### Temperature

Normal (30-year record)	54.90 degrees
Average annual 1983	55.50 degrees
Record highest, August 1983 (39-year record)	103.00 degrees
Record lowest, January 1963 (39-year record)	-21.00 degrees
Normal heating degree days (30-year record)	4,814
(Heating degree day totals are the sums of negative departures of average daily temperatures from 65 degrees F.)	

#### Precipitation

Normal (30-year record)	45.68 inches
Mean annual snowfall (39-year record)	16.20 inches
Total precipitation 1983	40.76 inches
Mean number days precipitation (.01 inch or more) (39-year record)	131
Mean number days thunderstorms (39-year record)	46

#### Prevailing Winds (17-year record)

South

#### Relative Humidity

1 a.m.	77 percent (19-year record)
7 a.m.	81 percent (20-year record)
1 p.m.	60 percent (20-year record)
7 p.m.	64 percent (20-year record)

\* A national weather service station is located at the Julian Carroll Airport in adjoining Breathitt County.

Source: U.S. Department of Commerce, Environmental Science Services Administration, Climatological Data, 1983. Station of record: Lexington, Kentucky.

## LOCAL GOVERNMENT

### City

Structure - Mayor - 4-year term; 4 council members - 2-year terms

Budget 1984 - General Fund \$ 9,600

Water and Sewer Fund 135,000

Fees and licenses - Business and occupational licenses range from \$15 to \$50 annually; unloading license - \$25 annually

### County

Structure - County Judge/Executive - 4-year term; 3 magistrates - 4-year terms

Budget 1983-84 - General Fund \$86,376; Road Fund \$279,100

### Assessed Value of Property, 1984\*

<u>Classes of Property</u>	<u>Campton</u>	<u>Wolfe County</u>
Real Estate	\$1,806,600	\$31,214,572
Tangibles	597,322	15,944,059

### Property Taxes

All property in Kentucky is assessed at 100 percent of fair cash value.

Land and buildings are taxed by the state and may be taxed by local jurisdictions. The state rate is \$0.221 per \$100 of assessed valuation.

Manufacturing machinery, raw materials inventories, pollution control equipment, and goods in the process of manufacture are not subject to local taxation. The state rate is \$0.15 per \$100.

Other tangible personal property owned by manufacturers (automobiles, trucks, finished goods, office furniture, office equipment) is taxed by the state at \$0.45 per \$100 and may be taxed by local jurisdictions.

Intangible personal property located in Kentucky (money in hand, shares of stock, notes, bonds, accounts receivable, and other credits) is taxed by the state at \$0.25 per \$100, and is not subject to local taxation.

Property stored in public warehouses in a transit status is not subject to local taxation. The state rate is only \$0.015 per \$100.

Private leaseholds in industrial facilities owned by cities or counties and financed by industrial revenue bonds are subject to a state tax of \$0.015 per \$100 of value (essentially the lessee's equity, adjusted for appreciation or depreciation). Local taxation is not permitted.

\* Excludes Homestead Exemptions.

**Combined State and Local Rates Per \$100 Valuation, 1983\***  
(100% assessment)

	<u>Site Inside City of Campton</u>	<u>Site Inside Unincorporated Wolfe County</u>
1. Land and buildings	\$0.6003	\$0.4503
2. Mfg. machinery, raw materials, goods in process, pollution control equipment	0.1500	0.1500
3. Finished goods, office equipment, vehicles, other tangibles	0.8473	0.6973
4. Intangibles (accounts receivable, notes, bonds, etc.)	0.2500	0.2500
5. Property stored in public warehouses in a transit status	0.0150	0.0150
6. Leaseholds in industrial revenue bond financed plants	0.0150	0.0150

**Planning and Zoning**

There is no planning and zoning commission in Wolfe County at the present time, but mandatory state codes are enforced.

Mandatory state codes enforced - Kentucky Plumbing Code, National Electric Code, Kentucky Boiler Regulations and Standards, Kentucky Building Code (modeled after BOCA code)

**Safety**

<b>Police</b>	<b>Campton</b>	<b>Wolfe County</b>
Total staff	1	2 full-time 4 part-time
Radio-patrol cars	1	3

**Fire**

Insurance Services Office, Public Protection Classification	10	**
Volunteers	25	

\* Kentucky Department of Economic Development.

\*\* Fire service is provided to Wolfe County by fire departments from Campton, Hazel Green, and Lee City.



## Refuse Collection and Disposal

	Campton	Wolfe County
Type service	Private	Private
Fee charged:		
residential	\$6.00 per month	\$6.00 per month
business	Varies according to volume	Varies according to volume
industrial	Varies according to volume	Varies according to volume
Collection frequency:		
residential	Weekly	Weekly
business	As needed	As needed
industrial	As needed	As needed
Trash pickup	As needed	As needed
Disposal method	Sanitary landfill	Sanitary landfill

## EDUCATION

### Public Schools

#### Wolfe County

Total Enrollment (May, 1984)	1,500
Elementary	1,150
High School	350
Student-Teacher Ratio	18-1
Elementary	21-1
High School	12-1
Percent High School Graduates to College (1983)	20.0
Expenditures Per Pupil (1982-83)	\$1,581.96
Bonded Indebtedness (June 30, 1984)	\$ 576,000

### Nonpublic Schools

#### Bethany Elementary

Total Enrollment	25
Elementary (1-8)	25
Student-Teacher Ratio	8-1
Elementary	8-1

## Area Colleges and Universities

<u>Name</u>	<u>Location (Miles distant)</u>	<u>Enrollment (Fall, 1983)</u>	<u>Highest Degree Conferred</u>
Lees College	Jackson (20)	392	Associate
Hazard Community College	Hazard (52)	650	Associate
Prestonsburg Community College	Prestonsburg (52)	1,154	Associate
Morehead State University	Morehead (60)	6,505	Masters, Specialist*
Eastern Kentucky University	Richmond (62)	12,660	Masters, Specialist*
Lexington Community College	Lexington (66)	2,532	Associate
Transylvania University	Lexington (66)	655	Baccalaureate**
University of Kentucky	Lexington (66)	22,055	Doctorate, M.D., D.M.D., J.D.

\* Joint doctoral degree programs are offered in cooperation with the University of Kentucky, Lexington. The degrees are issued by the University of Kentucky.

\*\* Courses in a masters degree program are taught on the Transylvania campus by faculty members of Xavier University of Cincinnati. The degree is issued by Xavier University.



## Vocational Schools

Both the state vocational-technical schools and the area vocational education centers are operated by the Kentucky Department of Education. The state vocational-technical schools enroll persons full time who are at least 16 years of age and not in school. These students attend classes for six hours each day. The area vocational education centers are designed to accommodate high school students who are at least 15 years of age. These students attend vocational school for three hours each day. The state vocational-technical schools and the area education centers offer evening courses to enable working adults to upgrade current job skills.

### Nearest State School

Location	Mayo State Vocational-Technical School
Miles Distant	Paintsville
Curriculum	48
	Business and Office
	Accounting/Jr. Management
	Business Education
	Clerical
	Court and Conference Reporter
	Data Processing
	Secretarial (Legal and Medical)
	Consumer and Home Economics
	Consumer and Family Life Skills
	Health and Personal Services Occupations
	Cosmetology
	Nursing Aide
	Practical Nursing
	Industrial Education
	Auto Body Repair
	Auto Mechanics
	Carpentry-Building Trades
	Diesel and Heavy Equipment Maintenance and Repair
	Drafting - Mechanical
	Drafting - Technical (with CAD/CAM)
	Electronic Communications
	Graphic Arts (Printing)
	Highway Technology
	Industrial Electricity
	Industrial Electronics
	Machine Shop
	Mine Machine Operation
	Mine Machine Repair
	Radio and Television Repair
	Refrigeration, Air Conditioning and Heating
	Welding
	Learning Resource Center

(Cont'd)

Location	Hazard State Vocational-Technical School
Miles distant	Hazard
Curriculum	52
	Business and Office
	Clerical
	Stenographic-Secretarial
	Health and Personal Services Occupations
	Cosmetology
	Licensed Practical Nursing
	Industrial Education
	Air Conditioning, Heating and Refrigeration
	Auto Body Repair
	Auto Mechanics
	Carpentry-Building Trades
	Coal Mining Operations
	Drafting (with CAD/CAM)
	Heavy Equipment Maintenance and Repair (Diesel Mechanics)
	Heavy Equipment Operating Engineer
	Highway Technology
	Industrial Electricity
	Industrial Electronics
	Machine Shop
	Masonry
	Mine Maintenance Mechanic
	Welding
	Computer Laboratory
	Learning Resource Center
	Computer Aided Instruction

Nearest Area Education Center

Location	Breathitt County Area Vocational Education Center
Miles Distant	Jackson
Curriculum	20
	Business and Office
	Clerical
	Secretarial
	Industrial Education
	Appliance Repair
	Auto Body Repair
	Carpentry
	Diesel Mechanics
	Industrial Electricity
	Machine Shop
	Mining Careers

Arrangements can be made to provide training in the specific production skills required by an industrial plant. Instruction may be conducted either in the vocational school or in the industrial plant, depending upon the desired arrangement and the availability of special equipment.

## HEALTH

### Local Medical Personnel

Physicians - 2

### Hospitals

<u>General Hospital</u>	<u>Location</u>	<u>Beds</u>
Morgan County Regional Hospital	West Liberty, 25 miles northeast	30 acute 15 skilled nursing

General hospital facilities - Radiology, emergency room, pathology and clinical laboratory, home health services, pharmacy, ultrasound, respiratory services, two operating rooms, respiratory therapy

Medical staff - 8 physicians, internist, pathologist (part-time), radiologist (part-time), 4 licensed practical nurses, and 20 registered nurses

### Other Medical Facilities

Campton Medical Clinic

### Ambulance Service

Name - Wolfe County Ambulance Service  
Staff - 3 emergency medical technicians  
Service - 24-hour, county-wide  
Equipment - 2 fully equipped ambulances

### Public Health

Facility - Wolfe County Health Center (Kentucky River District)  
Staff - 2 registered nurses, licensed practical nurse, CFNP (part-time), sanitarian, 4 clerks, 3 aides, X-ray technician (part-time)



## OTHER LOCAL FACILITIES

### Communications

Telephone - Services -	Mountain Rural Telephone Company Standard
Telegraph - Services -	Western Union Toll-free number, 1-800-325-5100
Postal - Class - Mail received - Mail dispatched -	U.S. Post Office Second Twice daily Once daily
Newspapers - Weekly and circulation - Other papers received from -	Wolfe County News  2,200  Lexington and Louisville, Kentucky
Radio - Stations received from -	Jackson, West Liberty, Beattyville, Vancleve, Stanton, Lexington and Louisville
Television - Cable service Reception from	Lexington and Hazard, Kentucky; Huntington and Charleston, West Virginia; Johnson City, Tennessee
Kentucky Educational Television -	Morehead transmitter - Channel 38

### Library Services

Public library - Wolfe County Public Library  
Size collection - 20,100 volumes  
Circulation, 1983-84 - 78,856 (Library and Bookmobile)  
Services - Bookmobile, audiovisual material, records and albums, talking book machines, story hour for preschool children; space for civic group meetings, cameras, summer reading programs

### Religious Institutions

Number of churches - 5  
Denominations - Baptist  
Church of Christ  
Church of God  
Methodist

Nearest Synagogues - Lexington, 66 miles northwest  
Congregations - Adath Israel (reform)  
Ohavey Zion (traditional)

### Financial Institutions

<u>Banks</u>	<u>Assets</u>	<u>Deposits</u>	<u>Statement Date</u>
Farmers and Traders Bank	\$11,880,612.79	\$5,368,038.68	6/30/84

### Clubs and Organizations

American Legion  
Boy Scouts  
Eastern Star  
4-H Club  
Future Farmers of America  
Homemakers Club  
Kiwanis Club  
Lions Club  
Little League  
Masons  
Wolfe County Fish and Game Club  
Wolfe County Industrial Development Corporation  
Woman's Club

## RECREATION

### Local

**The Wolfe Lake Park** offers a baseball field, basketball court, tennis court, picnic tables, shelter houses, and a playground. Other recreational facilities in Campton include two baseball fields and four gymnasiums.

A homecoming festival is held annually each Labor Day weekend in Campton. The festival includes a parade, booths, crafts, and live music.

Wolfe County is located within the **Daniel Boone National Forest**, which covers 640,000 acres of timberland in eastern Kentucky. It encompasses much of Kentucky's great beauty and provides a vacation paradise. There are scenic hiking trails, rivers and streams stocked with a variety of fish, hunting preserves, camping sites, and numerous other natural and historical attractions.

### Area (Within 70 miles)

**Natural Bridge State Resort Park** near Slade, 12 miles northwest of Campton, is located in the Daniel Boone National Forest where cliffs and stone arches fill the landscape. The rugged awesomeness of the great Natural Bridge is the main attraction. The park has a 35-room resort lodge with a dining room and gift shop, ten rustic cottages, and 95 camping sites. Other facilities include a lake, a swimming pool, picnic shelters and playgrounds, hiking trails, and a riding stable.

**Cave Run Lake**, constructed by the U.S. Army Corps of Engineers, is located 48 miles north of Campton within the 640,000-acre Daniel Boone National Forest. The lake area offers everything for the camper, the boatsman, the hunter, the fisherman, and "the lover of leisure."

The spirit of Daniel Boone and his pioneers is reborn at **Fort Boonesborough State Park** in Boonesboro, 52 miles northwest of Campton. In the re-created fort, pioneer crafts of the eighteenth century are demonstrated by using functioning antiques from the frontier era. Cabins are furnished as they would have been in the days of Boone and documentary films are presented which depict the struggle of the first Kentuckians to make the Kentucky wilderness a home. A gift shop within the fort offers for sale all the handcrafted items made at the fort. Other recreational facilities and activities of the park include the finest sand beach on the Kentucky River with a modern bathhouse and a modern camping area with 187 sites.

**Buckhorn Lake State Resort Park**, 58 miles southeast of Campton at Buckhorn, is a full-facility resort park with a 36-room lodge. The lodge itself offers a dining room with a lake view, a gift shop, a pool, meeting rooms, and a recreation room. Other park facilities and activities include a beach, a bathhouse, a picnic shelter, 72 campsites, a playground, mini-golf, tennis, a dock with open and covered slips, boat rentals, a 40-foot levee plus a fishing pier, bicycle rentals, and planned recreation.



**Grayson Lake State Park** is located 60 miles northeast of Campton near Grayson. Facilities available include 71 campsites, a beach, and a picnic area. Good fishing and organized recreational programs can be found during the summer. The park is located in the 7,350-acre Grayson Lake Wildlife Area.

**Jenny Wiley State Resort Park**, 60 miles east of Campton near Prestonsburg, takes full advantage of its picturesque highland setting. The 1,700-acre park offers facilities and activities such as a lodge, a dining room, a gift shop, cottages, a lodge pool, recreation rooms, campsites, picnic areas, planned recreation, playground, golf, hiking, horseback riding, shuffleboard, fishing, and fishing boat and pedal boat rentals. A summer music theatre presents Broadway musicals in a 90-seat amphitheater.

**White Hall State Shrine**, 62 miles northwest of Campton near Richmond, one of the grand estate houses of post-Civil War Kentucky, is the Italianate mansion of Cassius Marcellus Clay, the early abolitionist and politician. Kentucky handcrafts are sold in the White Hall gift shop, only a short walk from the mansion.

**Lexington**, 66 miles northwest of Campton, offers a variety of cultural, sporting, and recreational activities. Thoroughbred and harness racing is presented at Keeneland Race Course and the Red Mile Harness Track during several meets each year. The University of Kentucky and Transylvania University offer a number of sporting events. The University of Kentucky basketball games are held at Rupp Arena, the world's largest basketball arena. Other attractions include Lexington Philharmonic concerts, Lexington Children's Theatre, and plays performed by Broadway touring companies, all held in the recently renovated Opera House.

**The Kentucky Horse Park**, a park dedicated to horses and to man's love for horses, is located 68 miles northwest of Campton near Lexington. The park, which contains more than 1,000 acres of Kentucky Bluegrass, features the International Museum of the Horse; the Man O'War Memorial; an antique carriage display; horseback and pony rides; walking farm tours; horse-drawn tours; a restaurant; a gift shop; and a campground area, which offers swimming, tennis, and planned activities. Numerous special events are held year-round and include various horse shows, steeplechasing, dressage, polo games, and rodeos.

**Waveland State Shrine**, 70 miles northwest of Campton near Lexington, features an 1847 Greek Revival mansion depicting Kentucky lifestyles from the days of early settlers to the antebellum era of gentility and elegance as well as the Civil War and postwar periods. The shrine also includes the Kentucky Life Museum and a plantation village on ten acres with many shops and displays.

## COMMUNITY IMPROVEMENTS

### Recent

The Wolfe County School System has completed a total curriculum study. New courses added to the curriculum include computer science; higher college preparatory math, biology, chemistry and physics; and a gifted and talented student program.

The construction of a 40-unit housing project for the elderly was recently completed.

The renovation of a community center, which is used for public meetings, was recently completed. Total cost of the project was \$150,000.

The construction of a \$140,000 pharmacy at the Campton Medical Clinic was completed in the fall of 1984.

### Under Way

A 44-acre industrial site is being developed by the Wolfe County Industrial Development Committee and the Wolfe County Fiscal Court. Approximately 7 to 8 acres have already been leveled and graded. Utility services are available on the site.

### Planned

Extensive physical education and recreational improvements are being planned for the Wolfe County School System.

There are plans for installation of a solid waste transfer station to be located in Wolfe County.

There are plans for acquisition of a new police cruiser.