

1973

Industrial Resources: Adair County, Kentucky

Kentucky Library Research Collections
Western Kentucky University, spcol@wku.edu

Follow this and additional works at: https://digitalcommons.wku.edu/adair_cty

 Part of the [Business Administration, Management, and Operations Commons](#), [Growth and Development Commons](#), and the [Infrastructure Commons](#)

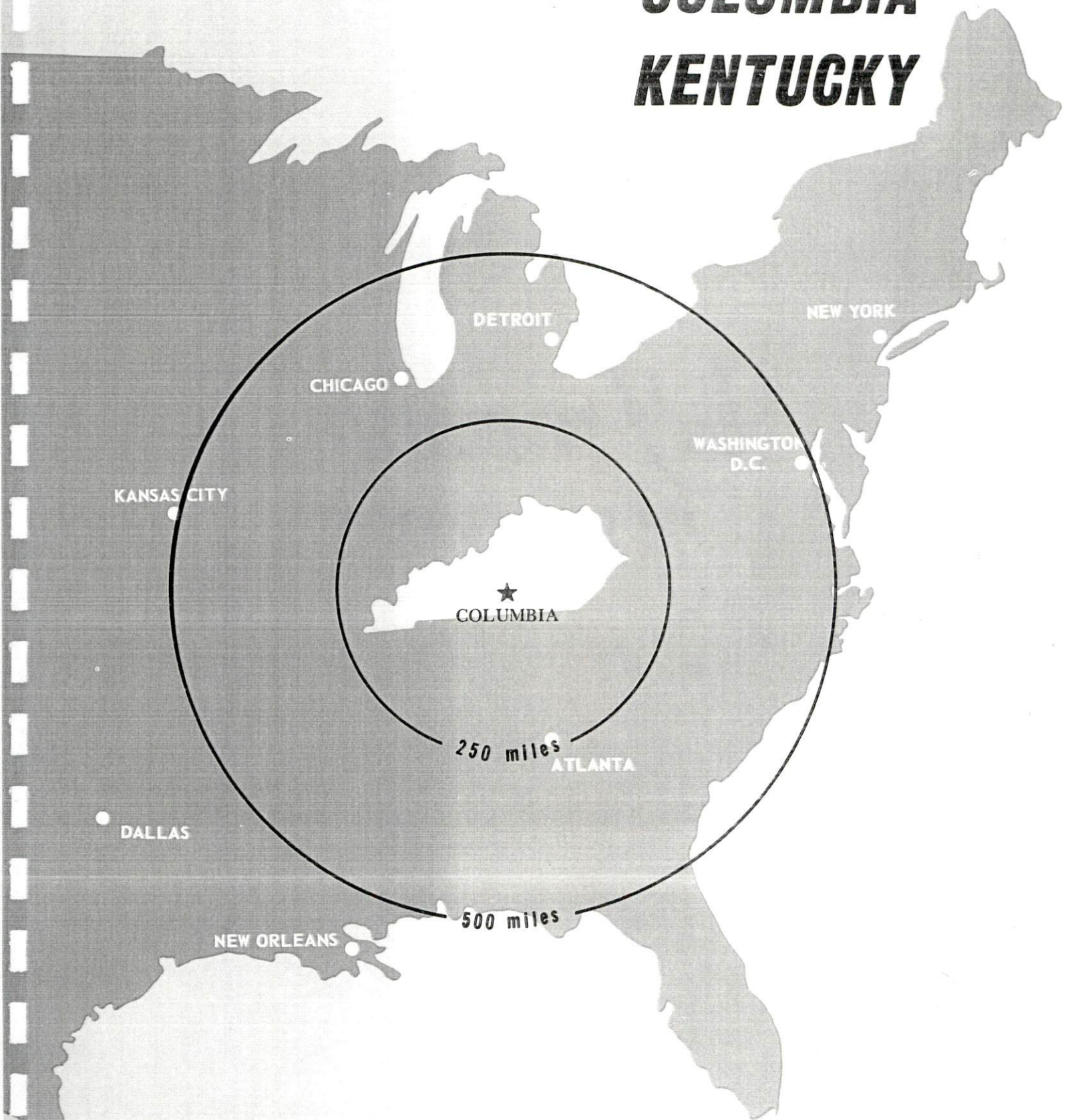
Recommended Citation

Kentucky Library Research Collections, "Industrial Resources: Adair County, Kentucky" (1973). *Adair County*. Paper 6.
https://digitalcommons.wku.edu/adair_cty/6

This Report is brought to you for free and open access by TopSCHOLAR®. It has been accepted for inclusion in Adair County by an authorized administrator of TopSCHOLAR®. For more information, please contact topscholar@wku.edu.

INDUSTRIAL RESOURCES

COLUMBIA KENTUCKY



ADAIR COUNTY, KENTUCKY

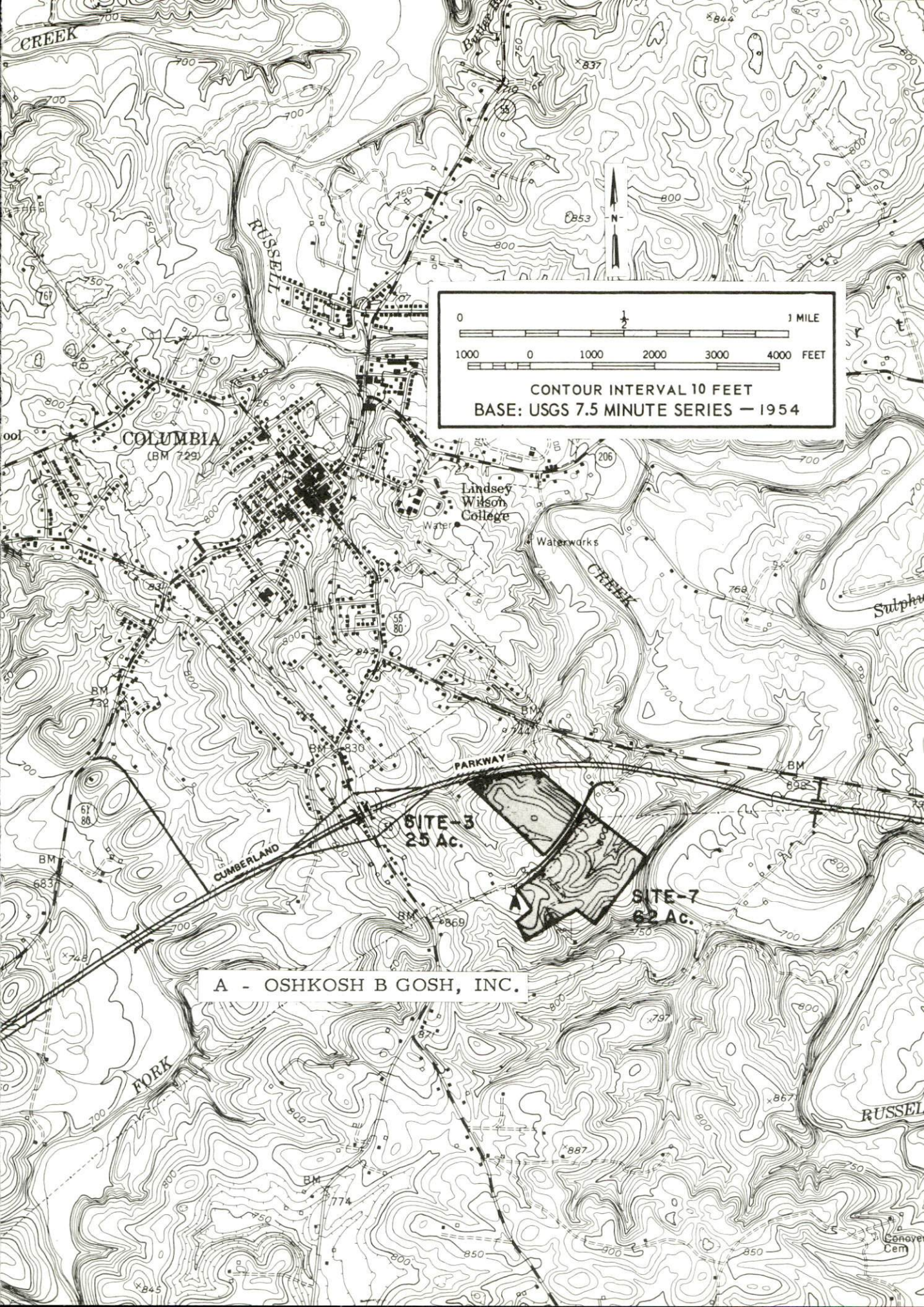
COLUMBIA INDUSTRIAL SITES

1973

For more information about the following sites, contact Mr. Edwin R. Cundiff, Columbia-Adair County Chamber of Commerce, Columbia, Kentucky or the Kentucky Department of Commerce, Capital Plaza Office Tower, Frankfort, Kentucky.

SITE #3: ACREAGE: 25 acres
LOCATION: In county, southeast of Columbia on Cumberland Parkway
ZONING: Not zoned
HIGHWAY ACCESS: Paved road to Kentucky 55
RAILROAD: Not rail served
WATER: Columbia Utilities Commission
SIZE LINE: 8-inch line approximately 700 feet southwest of site across paved road
GAS: Columbia Utilities Commission
SIZE MAIN: 2-inch main approximately 700 feet southwest of site
ELECTRICITY: Taylor County RECC
SEWERAGE: Columbia Utilities Commission
SIZE LINE: 8-inch line approximately 1,000 feet north of site across paved road
OWNERSHIP: Columbia-Adair County Chamber of Commerce

SITE #7: ACREAGE: 62 acres
LOCATION: In county, southeast of Columbia between Kentucky 55 and Kentucky 80
ZONING: Not zoned
HIGHWAY ACCESS: Paved road to Kentucky 55
RAILROAD: Not rail served
WATER: Columbia Utilities Commission
SIZE LINE: 8-inch line adjacent to southwest boundary of site
GAS: Columbia Utilities Commission
SIZE MAIN: 2-inch main adjacent to southwest boundary
ELECTRICITY: Taylor County RECC
SEWERAGE: Columbia Utilities Commission
SIZE LINE: 4-inch force main adjacent to southwest boundary, 8-inch line approximately 1,200 feet southwest across Kentucky 55
OWNERSHIP: Columbia-Adair County Chamber of Commerce



CREEK

RUSSELL

COLUMBIA
(BM 729)

Lindsey
Wilson
College

CREEK

SITE-3
25 AC.

SITE-7
62 AC.

A - OSHKOSH B GOSH, INC.

FORK

RUSSEL

Conover
Cem

INDUSTRIAL RESOURCES
COLUMBIA, KENTUCKY

Prepared by
The Kentucky Department of Commerce
in cooperation with
The Columbia-Adair County Chamber of Commerce

1973

This copy has been prepared by the Kentucky Department of Commerce,
Division of Research and Planning, and the cost of printing paid from
state funds.

TABLE OF CONTENTS

| <u>Chapter</u> | <u>Page</u> |
|--|-------------|
| INDUSTRIAL SITES | i |
| COLUMBIA, KENTUCKY - A RESOURCE PROFILE. | 1 |
| THE LABOR MARKET. | 5 |
| Population Trends | 5 |
| General Employment Characteristics, 1971 | 5 |
| Manufacturing Employment Trends by Industry. | 6 |
| Columbia Manufacturing Firms, Their Products and Employment | 6 |
| Wages. | 8 |
| Labor Organizations | 9 |
| Estimated Male Labor Supply | 9 |
| Estimated Female Labor Supply | 9 |
| Per Capita Personal Income | 10 |
| TRANSPORTATION | 11 |
| Rail. | 11 |
| Truck Service | 11 |
| Air | 12 |
| Bus | 12 |
| Taxi | 12 |
| POWER AND FUEL | 13 |
| Electricity. | 13 |
| Natural Gas | 13 |
| Other Fuels | 14 |
| WATER AND SEWERAGE | 15 |
| Water | 15 |
| Sewerage | 15 |
| LOCAL GOVERNMENT | 16 |
| City. | 16 |
| County. | 16 |

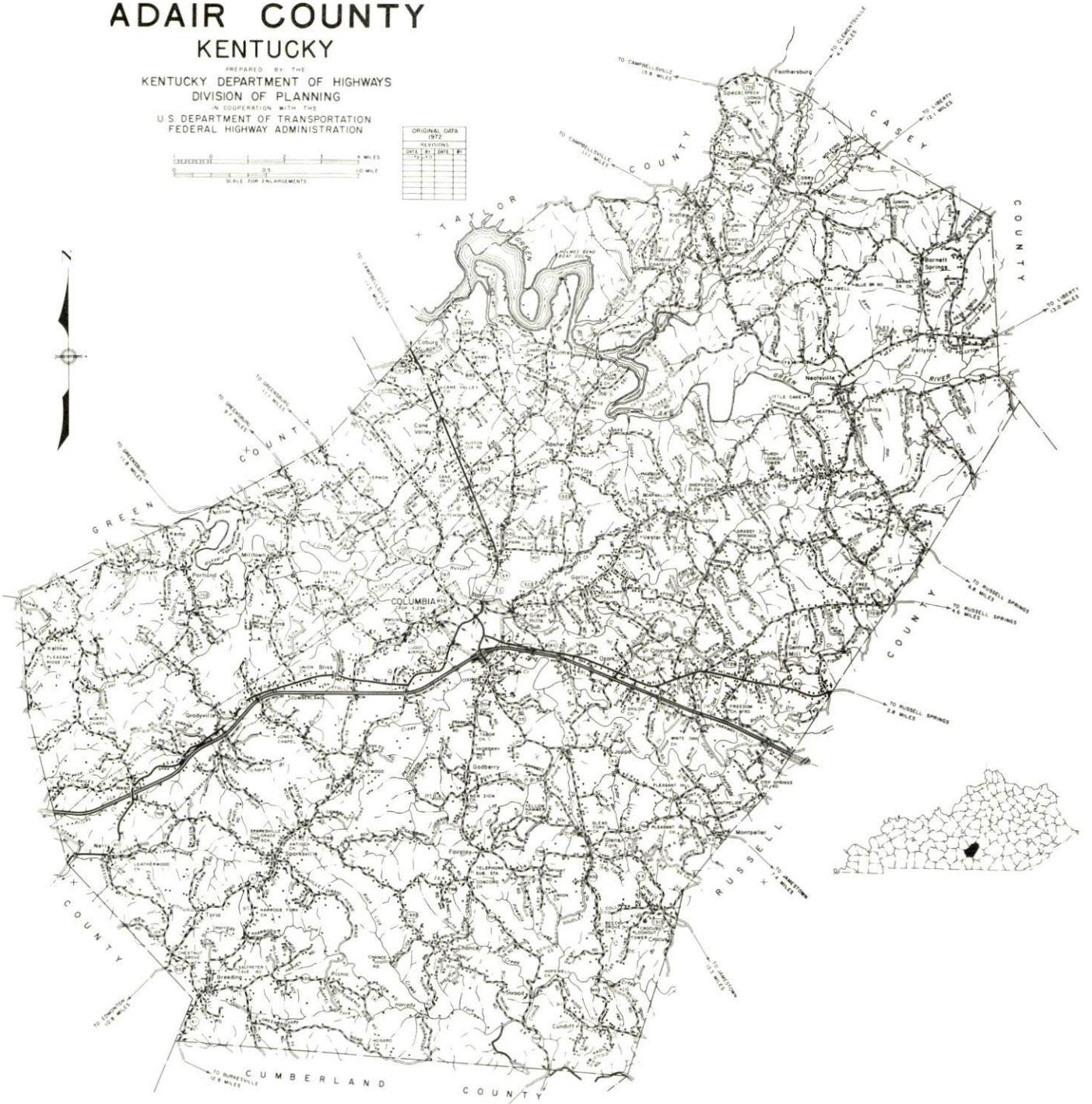
| <u>Chapter</u> | <u>Page</u> |
|---|-------------|
| Assessed Value of Property, 1973 | 16 |
| Property Taxes. | 16 |
| Local Property Tax Rate Per \$100 of | |
| Assessed Valuation, 1973. | 17 |
| Planning and Zoning. | 17 |
| Safety | 17 |
| Police | 17 |
| Fire | 17 |
| Rescue Service | 18 |
| Sanitation | 18 |
| EDUCATION | 19 |
| Public Schools | 19 |
| Nonpublic Schools. | 19 |
| Vocational Schools | 19 |
| Colleges and Universities | 20 |
| HEALTH. | 21 |
| Hospitals | 21 |
| Nursing Homes. | 21 |
| Public Health | 21 |
| OTHER LOCAL FACILITIES | 22. |
| Communications | 22 |
| Library Services | 22 |
| Religious Institutions | 23 |
| Financial Institutions | 23 |
| Hotels and Motels | 23 |
| Clubs and Organizations. | 23 |
| RECREATION. | 24 |
| Local | 24 |
| Area | 24 |
| AGRICULTURE - NATURAL RESOURCES - CLIMATE | 25 |
| Agriculture | 25 |
| Natural Resources | 25 |
| Climate | 26 |
| HISTORY. | 27 |

GENERAL HIGHWAY MAP ADAIR COUNTY KENTUCKY

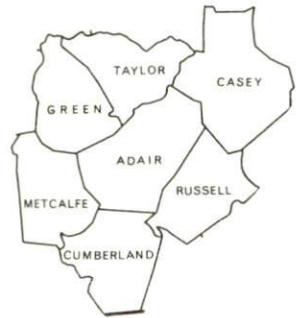
PREPARED BY THE
KENTUCKY DEPARTMENT OF HIGHWAYS
DIVISION OF PLANNING
IN COOPERATION WITH THE
U.S. DEPARTMENT OF TRANSPORTATION
FEDERAL HIGHWAY ADMINISTRATION



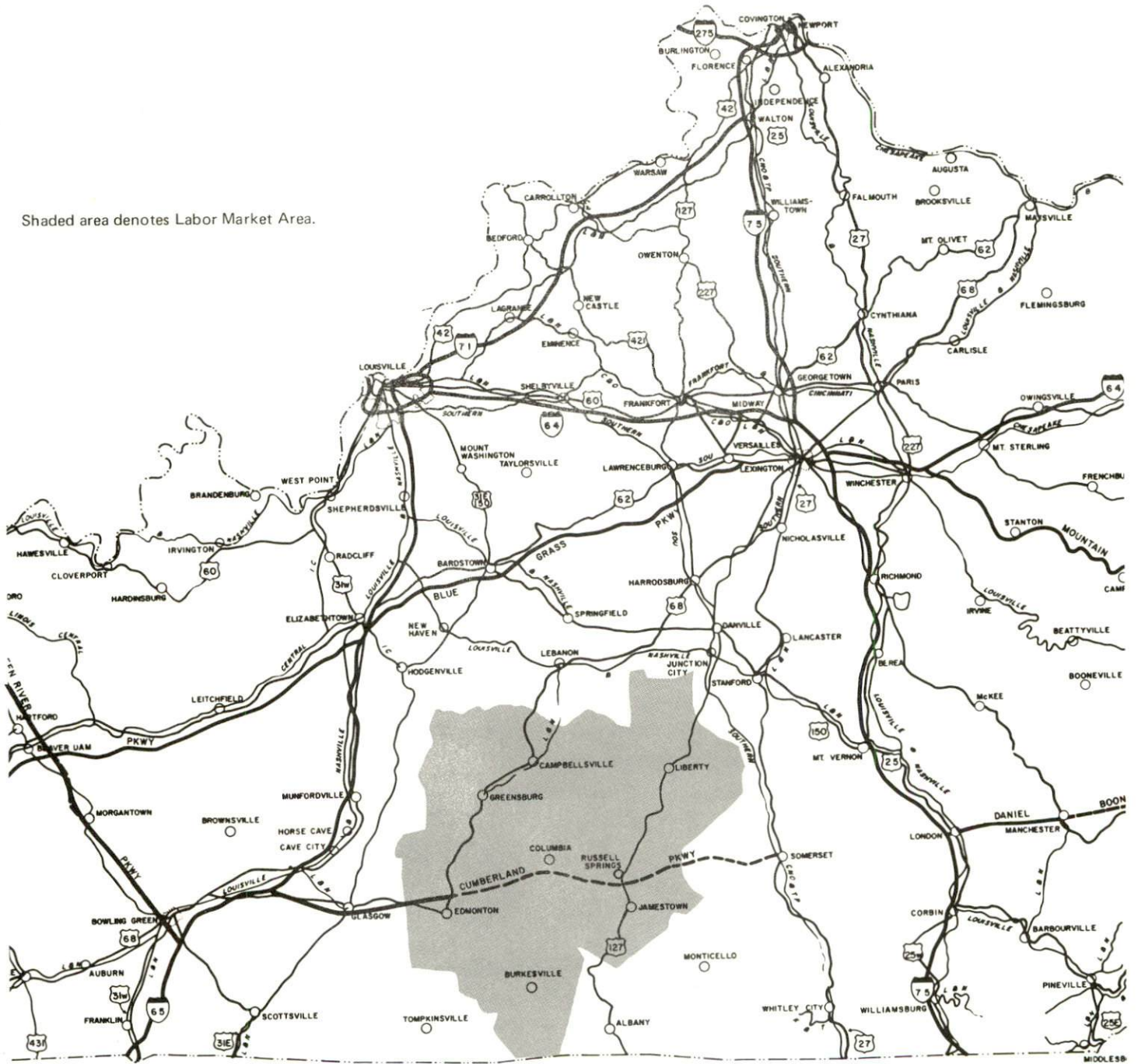
| ORIGINAL DATA | 1972 |
|--------------------------------------|------|
| ROADS | 100% |
| TRUCK ROUTES | 100% |
| STATE ROUTES | 100% |
| FEDERAL ROUTES | 100% |
| UNIMPROVED ROADS | 100% |
| UNIMPROVED TRUCK ROUTES | 100% |
| UNIMPROVED STATE ROUTES | 100% |
| UNIMPROVED FEDERAL ROUTES | 100% |
| UNIMPROVED UNIMPROVED ROADS | 100% |
| UNIMPROVED UNIMPROVED TRUCK ROUTES | 100% |
| UNIMPROVED UNIMPROVED STATE ROUTES | 100% |
| UNIMPROVED UNIMPROVED FEDERAL ROUTES | 100% |



COLUMBIA LABOR MARKET AREA



Shaded area denotes Labor Market Area.



COLUMBIA, KENTUCKY - A RESOURCE PROFILE

Columbia, the county seat of Adair County, is situated in the rolling Pennyrile Plains of south central Kentucky. Columbia is 88 miles southwest of Lexington, Kentucky; 97 miles southeast of Louisville, Kentucky; 83 miles northeast of Nashville, Tennessee; and 155 miles northwest of Knoxville, Tennessee. The population of Columbia was 3,234 in 1970 and the population of Adair County for 1970 was 13,037.

The Economic Framework

Total employment in Adair County averaged 3,710 in 1971 with manufacturing providing 290 jobs, trade and services 670, and government 420. Between 1962 and 1972, manufacturing increased by 210.3 percent, with the major industrial products being work and casual clothing.

Per capita personal income in the county in 1970 was \$1,847. Between 1960 and 1970, per capita personal income increased by 137.1 percent.

The Columbia labor market area includes Adair and the six adjoining counties. In 1971 employment in the labor market area totaled 23,940, including 6,070 in agriculture. Manufacturing furnished 6,260 jobs, trade and services 2,930, and government 2,490 jobs. Industrial employment has increased approximately 100 percent since 1962, with the sharpest gains in apparel and textile industries.

Despite industrial gains in recent years, this area still has a deficit of 1,108 manufacturing jobs when measured against the national manufacturing employment-population ratio. This indicates an area with a potential for additional manufacturing production.

Resources for Growth

1. There is a current estimated labor supply of 7,730 men and 6,180 women available for industrial jobs in the labor market area. In addition, 3,940 young men and 3,830 young women will become 18 years of age by 1979 and will be potentially available for work.

2. Major highway access is by Kentucky 80, and with the completion of the Cumberland Parkway, highway transportation in the area will be greatly improved. The Lu Dot Airport can accommodate light aircraft and is planning a new runway that will accommodate jet aircraft. Commercial air service is available at the Bowling Green-Warren County Municipal Airport, 70 miles west. Rail service is only 19 miles away, at Campbellsville, and is provided by the Louisville & Nashville Railroad.

3. Electric power is provided to Columbia by the Kentucky Utilities Company and in Adair County by the Taylor County RECC. Columbia's municipal gas system is supplied by Texas Eastern Transmission Corporation. The treated and raw water supply is adequate for continued growth.

4. Industrial sites - Columbia has two sites available for industrial use.

5. Education is an important growth asset for Columbia. Columbia and Adair County are served by a common school system and educational television is available.

Three universities, five senior colleges, three junior colleges, and three community colleges are all within 75 miles with Lindsey Wilson Junior College located in Columbia.

The Russell County Area Vocational Education Center, located at Jamestown, 19 miles southeast of Columbia, offers five different courses. Somerset State Vocational Technical School in Somerset, 47 miles east of Columbia, offers thirteen different fields of study.

Community Programs for Improvement

Columbia is undergoing a variety of community improvements. Some of the proposed improvements include: a new airport with a 4,000-foot paved runway; a county water district; a hospital with extended care health facility, containing 65 beds and allowing room for further expansion; a new emergency communication system; a new vocational school; a new Central Office Building for the school system. Plans for improving the water and sewer facilities are also underway.

Improvements under construction are: a new shopping center, and the rebuilding of Highway 55 North from the city limits to the Taylor County line.

Recent improvements include: a new Regional Kentucky State Police Barracks that serves eleven counties; an addition to the Adair County High School; a new kindergarten program that is based on the Title I and the State Minimum Foundation Programs; additions to Colonel William Casey Elementary School and John Adair Elementary School; a new District Highway Maintenance Garage; a new playground and recreation facilities; new ball fields complete with dugouts and bleachers; a new Nazarene Church; new restaurants; and three new parking lots.

Recreation, Entertainment and Livability

Columbia offers a variety of recreational activities and has a complete supervised program. There are two playgrounds, two swimming pools, one park, four tennis courts, two baseball diamonds, football field, track field, country club, golf course, an indoor and an outdoor theater, and boating and fishing in the county.

Other facilities close to Columbia include:

1. GreenRiver Lake State Park, located 8 miles from Columbia, which has an 8,360-acre lake and a dirt and rock filled dam, 141 feet in height and 2,350 feet in length. Recreational activities include fishing, boating, swimming, hiking, and picnicking.
2. Lake Cumberland State Resort Park is located in south central Kentucky. Lake Cumberland is the mainstream of scenic beauty and outdoor activity in south central Kentucky. The lake covers 50,250 acres with clear, azure water and has 1,255 miles of shoreline. It offers fishing resorts, rustic camping sites, boaters' paradise, hiking, swimming, riding, golfing, tennis, and picknicking.
3. Dale Hollow Reservoir is located near Corbin. The lake is 27,700 acres of prime scenic and fishing waters shared by southern Kentucky and northern Tennessee.
4. Barren River Lake State Resort Park is located southwest of Glasgow. The dam controls the waters of Barren River creating a lake 19 miles (minimum) to 46 miles (maximum) in length.
5. Mammoth Cave National Park is located approximately 70 miles west of Columbia. The park is one of the major tourist attractions of all times and the cave is one of the largest ever discovered. Facilities include a 51,000-acre park, a state park, two state shrines, two large lakes, many historical sights, festivals, hillside chair lifts, and even a prominent wax museum.
6. General Burnside State Park on Chandler Island in Lake Cumberland, near Burnside, south of Somerset, is open year around, has 400 acres and features camping, swimming, fishing, boating, picnic areas, playgrounds, and an 18-hole golf course.
7. Abraham Lincoln's Birthplace National Historic Site is located 3 miles south of Hodgenville. The site offers the original 100-acre farm, the log cabin enclosed in a granite memorial shrine, a Visitor Center with exhibits and an audiovisual program, a limestone spring and a 300-year old Boundary Oak.

8. Lincoln Homestead State Park is 5 miles north of Springfield. It is a restored settlement where Lincoln's grandparents lived. The park facilities include an 18-hole golf course, picnic areas, gift shop, and a museum.

9. My Old Kentucky Home State Park, located near Bardstown, is where Stephen Collins Foster was inspired to compose "My Old Kentucky Home." The stately mansion was built in 1795. The park offers camping, picnic areas, playgrounds, golf, souvenir and gift shop, typical plantation flower gardens, guides in the period costumes, and lavish furnishings.

In addition, there are also five state shrines near Columbia:

Perryville Battlefield State Shrine
Constitution Square State Shrine
Isaac Shelby State Shrine
Old Mulkey Meeting House State Shrine
William Whitley House State Shrine

THE LABOR MARKET

POPULATION TRENDS

| Area | Population | | | | Percent Change | |
|-------------------|------------|--------|--------|--------|----------------|---------|
| | 1972* | 1970 | 1960 | 1950 | 1960-70 | 1950-60 |
| Columbia | N. A. | 3,234 | 2,255 | 2,167 | +43.4 | + 4.1 |
| Labor Market Area | 81,000 | 79,024 | 83,838 | 93,590 | - 5.7 | - 5.2 |
| Adair County | 13,700 | 13,037 | 14,699 | 17,603 | -11.3 | -16.5 |
| Casey County | 13,100 | 12,930 | 14,327 | 17,446 | - 9.8 | -17.9 |
| Cumberland County | 6,500 | 6,850 | 7,835 | 9,309 | -12.6 | -15.8 |
| Green County | 10,300 | 10,350 | 11,249 | 11,261 | - 8.0 | - 0.1 |
| Metcalfe County | 8,100 | 8,177 | 8,367 | 9,851 | - 2.3 | -15.1 |
| Russell County | 11,300 | 10,542 | 11,076 | 13,717 | - 4.8 | -19.3 |
| Taylor County | 18,000 | 17,138 | 16,285 | 14,403 | + 5.2 | +13.1 |

*Provisional Estimates.

Sources: U. S. Department of Commerce, Bureau of the Census, Census of Population, 1970, 1960, 1950. U. S. Bureau of the Census, Current Population Reports, Series P-26, June 1973.

GENERAL EMPLOYMENT CHARACTERISTICS, 1971

| Major Employment Group | Employment | |
|------------------------|--------------|-------------------|
| | Adair County | Labor Market Area |
| TOTAL | 3,710 | 23,940 |
| Agricultural | 1,420 | 6,070 |
| Nonagricultural | 2,290 | 17,870 |
| Manufacturing | 290 | 6,263 |
| Government | 420 | 2,490 |
| Trade and Services | 674 | 2,933 |
| Other | 906 | 6,184 |

Source: Kentucky Department of Economic Security, Division of Research and Statistics.

MANUFACTURING EMPLOYMENT TRENDS BY INDUSTRY
SEPTEMBER 1972 AND 1962

| Industry | Adair County | | | Labor Market Area | | |
|---|--------------|------|----------|-------------------|-------|----------|
| | 1972 | 1962 | % Change | 1972 | 1962 | % Change |
| TOTAL | 391 | 126 | +210.3 | 6,969 | 3,491 | + 99.6 |
| Food & Kindred Products | 8 | 18 | - 55.6 | 240 | 230 | + 4.3 |
| Tobacco | 0 | 0 | 0 | 0 | 1 | -100.0 |
| Apparel, Textiles, Leather | 199 | 0 | -- | 5,384 | 2,651 | +103.0 |
| Lumber, Furniture | 144 | 99 | + 45.5 | 742 | 591 | + 25.5 |
| Printing & Publishing, Paper | 35 | 5 | +600.0 | 42 | 10 | +320.0 |
| Stone, Clay & Glass | 5 | 4 | + 25.0 | 16 | 8 | +100.0 |
| Primary Metals | 0 | 0 | 0 | 65 | 0 | -- |
| Machinery, Metal Products, Equipment | 0 | 0 | 0 | 480 | 0 | -- |

Source: Kentucky Department of Economic Security, Number of Workers in Manufacturing Industries Covered by Kentucky Unemployment Insurance Law Classified by Industry and County, September 1972, September 1962.

COLUMBIA MANUFACTURING FIRMS,
THEIR PRODUCTS AND EMPLOYMENT

| Firm | Product | Employment | | |
|-------------------------------------|--|------------|------|--------|
| | | Total | Male | Female |
| Adair Cheese Company | Fluid milk | 6 | 6 | 0 |
| Barnes Milling Company | Feed | 6 | 5 | 1 |
| City Supply Company | Ready mixed concrete, concrete stock tanks, kitchen cabinets | 19 | 16 | 3 |
| The Columbia Statesman | Offset printing, news- paper publishing, job printing | 43 | | |
| Day and Day Feed Mill | Feed | 3 | 3 | 0 |
| R. E. Gaddie, Inc. | Plant mix asphalt | 22 | 20 | 2 |
| Harvey & Bryant Supply Company | Cabinets | 3 | 3 | 0 |
| Kentucky Tile and Lumber Company | Hardwood lumber, dimension material, pallet material | 6 | 6 | 0 |
| M and W Milling Company | Feed | 4 | | |
| Morrison Lumber Company | Rough lumber | 25 | 25 | 0 |

(cont.)

| <u>Firm</u> | <u>Product</u> | <u>Employment</u> | | |
|------------------------------|--|-------------------|-------------|---------------|
| | | <u>Total</u> | <u>Male</u> | <u>Female</u> |
| Oshkosh B'Gosh, Inc. | Work and casual clothing | 174 | 20 | 154 |
| Roach Manufacturing Co. | Tobacco spears and knives, drive over gates, textile cattle rubs | 3 | 3 | 0 |
| Sandusky Building Supply | Millwork | 2 | 2 | 0 |
| W. H. Sandusky and Son, Inc. | Lumber | 9 | 8 | 1 |
| Whitney and Whitney | Hardwood lumber, flooring, crossties, pallet lumber | 17 | 17 | 0 |

Source: Kentucky Department of Commerce, 1973 Kentucky Directory of Manufacturers.

LABOR ORGANIZATIONS

| | |
|--|---|
| <u>Union</u> | <u>Representing Manufacturing Workers at:</u> |
| International Ladies' Garment Workers Union of America AFL-CIO | Oshkosh B'Gosh, Inc. |

ESTIMATED MALE LABOR SUPPLY
COLUMBIA LABOR MARKET AREA

| <u>Area</u> | <u>Current</u> | | | <u>Future</u> | |
|-------------------|----------------|-------------------------------|-------------------|----------------------------|--|
| | <u>Total</u> | <u>Not in Labor Force</u> | <u>Unemployed</u> | <u>Under- employed</u> | <u>Reaching 18 Yrs. of Age by 1979</u> |
| Labor Market | | | | | |
| Area | 7, 728 | 3, 596 | 992 | 3, 140 | 3, 944 |
| Adair County | 1, 341 | 720 | 121 | 500 | 597 |
| Casey County | 1, 471 | 744 | 159 | 568 | 697 |
| Cumberland County | 905 | 454 | 83 | 368 | 390 |
| Green County | 615 | 203 | 135 | 277 | 516 |
| Metcalfe County | 613 | 233 | 128 | 252 | 410 |
| Russell County | 1, 470 | 849 | 195 | 426 | 517 |
| Taylor County | 1, 313 | 393 | 171 | 749 | 817 |

Sources: Kentucky Department of Economic Security, Kentucky Labor Supply Estimates by County, 1972. Kentucky Department of Commerce, Future Labor Supply by 1979.

ESTIMATED FEMALE LABOR SUPPLY
COLUMBIA LABOR MARKET AREA

| <u>Area</u> | <u>Current</u> | | | <u>Future</u> | |
|-------------------|----------------|-------------------------------|-------------------|----------------------------|--|
| | <u>Total</u> | <u>Not in Labor Force</u> | <u>Unemployed</u> | <u>Under- employed</u> | <u>Reaching 18 Yrs. of Age by 1979</u> |
| Labor Market | | | | | |
| Area | 6, 182 | 2, 867 | 568 | 2, 747 | 3, 826 |
| Adair County | 1, 042 | 627 | 69 | 346 | 606 |
| Casey County | 1, 277 | 688 | 91 | 498 | 691 |
| Cumberland County | 515 | 206 | 47 | 262 | 328 |
| Green County | 740 | 305 | 75 | 360 | 442 |
| Metcalfe County | 632 | 390 | 72 | 170 | 414 |
| Russell County | 1, 196 | 651 | 115 | 430 | 504 |
| Taylor County | 780 | 0 | 99 | 681 | 841 |

Sources: Kentucky Department of Economic Security, Kentucky Labor Supply Estimates by County, 1972. Kentucky Department of Commerce, Future Labor Supply by 1979.

PER CAPITA PERSONAL INCOME

| <u>Area</u> | <u>1970</u> | <u>1960</u> | <u>% Change</u> |
|-------------------------|-------------------|----------------|-----------------|
| Adair County | \$1,847* | \$ 779 | +137.1 |
| Labor Market Area Range | \$1,719 to 2,826* | \$659 to 1,383 | N. A. |
| Kentucky | 3,099 | 1,581 | + 96.0 |
| U. S. | 3,933 | 2,216 | + 77.5 |

*Unadjusted for commuting.

Sources: University of Kentucky, Office of Development Services and Business Research, Per Capita Income in Kentucky. U. S. Department of Commerce, Bureau of Economic Analysis, Survey of Current Business, August 1972.

TRANSPORTATION

Rail

The nearest rail service, provided by the Louisville & Nashville Railroad, is located in Campbellsville, only 19 miles from Columbia.

Services - Freight service - 1 daily freight northbound and 1 daily freight southbound, switching facilities available, siding space. Nearest piggy-back facilities are in Glasgow, 41 miles west by southwest of Columbia.

For details on routing, schedules, rates, and services, contact:

Manager of Industrial Development
 Louisville & Nashville Railroad Company
 908 West Broadway
 Louisville, Kentucky 40203

Truck Service

Company

Central Motor Fxpress, Inc.*
 Manning Motor Express, Inc.
 Sanders and Leigh
 Skaggs Transfer, Inc.

Home Office

Campbellsville, Kentucky
 Glasgow, Kentucky
 Liberty, Kentucky
 Louisville, Kentucky

Other Freight Services

United Parcel Service

Nearest Service Center

Campbellsville, Kentucky
 19 miles away

*Local terminal.

HIGHWAY MILES AND TRUCK TRANSIT TIME IN DAYS FROM COLUMBIA, KENTUCKY, TO SELECTED MARKET CENTERS

| City | Delivery | | City | Delivery | |
|------------------|---------------|-----------|---------------------|---------------|-----------|
| | Highway Miles | Time TL | | Highway Miles | Time TL |
| Atlanta, Ga. | 335 | overnight | Los Angeles, Calif. | 2,204 | 7 days |
| Birmingham, Ala. | 269 | overnight | Louisville, Ky. | 97 | overnight |
| Chicago, Ill | 398 | 2nd day | Nashville, Tenn. | 83 | overnight |
| Cincinnati, Ohio | 210 | 2nd day | New Orleans, La. | 613 | overnight |
| Cleveland, Ohio | 451 | overnight | New York, N. Y. | 866 | 3 days |
| Detroit, Mich. | 472 | 2nd day | Pittsburgh, Pa. | 491 | overnight |
| Knoxville, Tenn. | 155 | overnight | St. Louis, Mo. | 361 | overnight |

Source: Delivery Time Only - Central Motor Express, Inc., P. O. Drawer C, Campbellsville, Kentucky 40011.

Air

| | <u>Local</u> | <u>Nearest Commercial</u> |
|-------------------------|--|--|
| Location: | Lu Dot Airport 1 1/2 miles southwest of Columbia | Metropolitan Nashville Airport Nashville, 83 miles from Columbia |
| Runways: | 1 turf | 3 paved |
| Length: | 2,100 feet | 8,500 feet, 7,700 feet, 4,025 feet |
| Traffic Control: | Wind sock, tetrahedron | FAA control: control tower, approach and ground control, guards, departure control |
| Lighting: | Lights on request | High intensity for instrument runway, medium intensity for other runways, obstructions, beacon and approach lights |
| Services: | 80 octane, taxi and air charters | 80, 91, 100 and 115 octane, jet fuel, major A & E repairs, storage, taxi and rental car service, city bus service, restaurant, hotel, FAA Flight Service Station; American, Ozark, Braniff, Eastern, Piedmont, Allegheny, Delta, TWA and Southern Airlines |
| Air Freight Service: | Chartered air freight service must be arranged | Air freight terminal; freight carrying airlines regularly service this terminal |

Bus

Southern Greyhound Bus Lines

Taxi

Two taxi companies, 24 hour service, 8 cabs radio-equipped

POWER AND FUEL

Electricity

Company serving Columbia - Kentucky Utilities Company
Source of power - Kentucky Utilities Company
Total generating capacity - 1,215,000 KW
For industrial rates contact:

Kentucky Utilities Company
Industrial Development Department
Lexington, Kentucky

Company serving Adair County - Taylor County RECC
Source of power - East Kentucky Power Cooperative
Total generating capacity - 548,000 KW
For industrial rates contact:

Taylor County RECC
Route 4
Campbellsville, Kentucky 42718

Natural Gas

Company serving Columbia - Columbia Utilities Commission
Source of supply - Texas Eastern Transmission Corporation
Size of transmission mains - 3-inch (supplier)
Distribution mains - 1 to 4 inches
Distribution pressure - 7 to 15 psi
Btu content - 1,015 per cubic foot
Specific gravity - .60
For rates and supplies contact:

Columbia Utilities Commission
City Hall
Columbia, Kentucky 42728

Other Fuels

Propane and butane

Adair Gas Service, East Kentucky 80, Columbia
Banks Gas Service, 700 Russell Road, Columbia

Fuel oils

Distillate fuel oil - Ashland Petroleum Company, 114 Reed, Columbia
Yale Oil Company, 102 East 80, Columbia
George Vance Sun Oil Products, Sandusky Street, Columbia
Standard Oil Company, 706 Birchfield Street, Columbia

Residual fuel oil - arrangements must be made with the refinery.

Low sulphur content coal - Available from Eastern Kentucky.

WATER AND SEWERAGE

Water

Company serving Columbia - Columbia Utilities Commission
Source - Russell Creek
Treatment plant capacity - 1,000,000 gallons per day*
Average daily consumption - 330,000 gallons
Peak daily consumption - 400,000 gallons
Type treatment - Coagulated, settled, filtered, chlorinated, fluoridated
Storage capacity - 489,000 gallons
Size mains - 4, 6, and 8 inches
Average pressure - 45 psi
Average temperature - 50° F.

MONTHLY WATER RATES FOR WHOLESALE AND INDUSTRIAL CONSUMERS

| | | |
|-------|----------------|----------------------|
| First | 3,000 gallons | \$4.00 (Minimum) |
| Next | 7,000 gallons | .095 per 100 gallons |
| Next | 10,000 gallons | .085 per 100 gallons |
| Next | 10,000 gallons | .075 per 100 gallons |
| Next | 10,000 gallons | .070 per 100 gallons |
| Next | 10,000 gallons | .055 per 100 gallons |

Surface water source - Green River (Russell Creek)
Average discharge - 269 cfs (32-year record)
Expected ground water yield - 5 to 50 gpm from broad central area
(east-west direction), 5 gpm or less throughout the remainder of the
county

Sewerage

Company serving Columbia - Columbia Utilities Commission
Design capacity - 395,000 gallons per day**
Average daily flow - 234,000 gallons; Treatment - primary
Type treatment - aeration, drying beds
Treated effluent discharged into - Russell Creek
Size of sanitary mains - 6, 8, and 10 inches
Rates - 60 percent of monthly water bill; tap on fee - \$75

*Study underway for improvements in treatment storage and distribution.

**Study underway on expansion to the sewage treatment plant.

LOCAL GOVERNMENT

City

Structure - Mayor - 4-year term; 6 councilmen - 2-year terms

| | |
|----------------------------|-----------|
| Budget 1973 - General Fund | \$125,308 |
| Water and Sewer Fund | 131,970 |
| Gas System | 167,704 |

Fees and licenses - Occupational fees and licenses vary from \$10 to \$60 annually, depending on the type of occupation

County

Structure - County Judge - 4-year term; 7 magistrates - 4-year terms

Budget 1973-74 - General Fund \$117,323; Road Fund \$39,700

Assessed Value of Property, 1973

| <u>Classes of Property</u> | <u>Columbia</u> | <u>Adair County</u> |
|----------------------------|-----------------|---------------------|
| Real Estate | \$13,440,000 | \$61,311,442 |
| Tangibles | 3,996,000 | 10,597,389 |
| Public Service | | 24,313,091 |

Property Taxes

Land and buildings are taxed by the state and may be taxed by local jurisdictions. The state rate is \$0.015 per \$100 of assessed valuation.

Tangible personal property owned by manufacturers (automobiles, trucks, finished goods, office furniture, office equipment) is taxed by the state at \$0.15 per \$100 and may be taxed by local jurisdictions.

Manufacturing machinery, raw materials inventories, and goods in process inventories are not subject to local taxation. The state rate is \$0.15 per \$100.

Property stored in public warehouses is not subject to local taxation. The state rate is only \$0.015 per \$100.

All property is assessed at 100 percent of fair cash value.

Local Property Tax Rate Per \$100 of Assessed Valuation, 1973*

| <u>Taxing Jurisdiction</u> | <u>Columbia</u> | <u>Adair County</u> |
|----------------------------|-----------------|---------------------|
| County | \$.160 | \$.160 |
| School | .466 | .466 |
| City | .330 | |

Planning and Zoning

Joint agency - City-County Planning Commission
Mandatory state codes enforced - Plumbing, National Fire Protection Association Code, National Building Code (for major buildings and residential construction containing more than 12 bedrooms per building)
Other programs - Public Housing - 30 units have recently been added with an addition of 70 more units planned

Safety

| <u>Police</u> | <u>Columbia</u> | <u>Adair County</u> |
|--|-----------------|---------------------|
| Total staff | 5 | 3 |
| Radio-patrol cars | 1 | 3 |
| <u>Fire</u> | | |
| American Insurance Association Fire Rating | 7 | |
| Volunteers | 24 | 24 |
| Equipment: | | |
| 2,000 gal. tank truck | | 1 |
| 750 gpm pumpers | 2 | 1 |
| 500 gpm portable pumps | 1 | 1 |
| 300 gpm portable pumps | 1 | 1 |
| emergency truck | | 1 |

*Kentucky Department of Revenue.

Rescue Service

Adair County Rescue Squad:

Number of volunteers - 100

Equipment - 3 vehicles, small truck, personal truck, portable kitchen, rough terrain truck, 2 boats, air pumps, scuba equipment for 7 people, two-way radio system, emergency equipment including porta-power, cutting equipment for wood and metal, first aid supplies, resuscitators, winches, dragging equipment, rope, axes, shovels, pipe wrenches, saws, stretchers, blankets, small hand tools, 4 power generators, tarpaulins, splints, lights, rainwear, electrical cords, and other necessary rescue equipment

Personnel training - Civil Defense rescue training, First Aid, Red Cross, scuba diving certification class

Sanitation

| | <u>Columbia</u> |
|-----------------------|-------------------------|
| Type service | municipal |
| Fee charged: | |
| residential | \$2 per month |
| business | \$8 per month (average) |
| Collection frequency: | |
| residential | daily |
| business | contracted |
| Trash pickup | daily |
| Disposal method | landfill |

EDUCATION

Public Schools

| | <u>Adair County</u> |
|--|---------------------|
| Total Enrollment (Fall 1972) | 3,133 |
| Elementary | 2,233 |
| High School | 900 |
| Student-Teacher Ratio | 22 to 1 |
| Elementary | 22 to 1 |
| High School | 23 to 1 |
| Percent High School Graduates to College | 22.2 |
| Expenditures Per Pupil (1971-72) | \$486.41 |
| Bonded Indebtedness, June 30, 1972 | \$1,750,000 |

Nonpublic Schools

| | |
|-----------------------|---------|
| Total Enrollment | 38 |
| Elementary | 38 |
| Student-Teacher Ratio | 17 to 1 |

Vocational Schools

| | <u>Nearest State School</u> | <u>Nearest Area Education Center</u> |
|---------------|--|---|
| Location | Somerset State Vocational-Technical School | Russell County Area Vocational Education Center |
| Miles Distant | 47 | 19 |
| Curriculum | Data Processing Clerical Secretarial Marketing and Distributive Education Health Careers Learning Lab Electronics (Technology) Aircraft Maintenance Technology Appliance Repair Auto Mechanics Drafting Machine Shop Printing | Health Careers Auto Mechanics Carpentry Electricity Welding |

Arrangements can be made to provide training in the specific production skills required by an industrial plant. Instruction may be conducted either in the vocational school or in the industrial plant, depending upon the desired arrangement and the availability of special equipment.

Colleges and Universities

| <u>Name</u> | <u>Area - Within 75 Miles</u> | | |
|------------------------------------|-------------------------------|------------------------------------|-------------------------------------|
| | <u>Location</u> | <u>Enrollment (Fall, 1972)</u> | <u>Highest Degree Conferred</u> |
| Lindsey Wilson Junior College | Columbia | 306 | Associate |
| Somerset Community College | Somerset | 690 | Associate |
| Cumberland College | Williamsburg | 1, 751 | Baccalaureate |
| Sue Bennett Junior College | London | 190 | Associate |
| Berea College | Berea | 1, 356 | Baccalaureate |
| Eastern Kentucky University | Richmond | 10, 580 | Masters |
| Centre College | Danville | 758 | Baccalaureate |
| Asbury College | Wilmore | 1, 115 | Baccalaureate |
| St. Catharine Junior College | St. Catharine | 131 | Associate |
| Campbellsville College | Campbellsville | 743 | Baccalaureate |
| Elizabethtown Community College | Elizabethtown | 731 | Associate |
| Fort Knox Center College | Fort Knox | 655 | Associate |
| Western Kentucky University | Bowling Green | 11, 329 | Masters |
| Tennessee Technical University | Cookeville, Tennessee | 6, 607 | Ph. D. |

HEALTH

Hospitals

| <u>General Hospital</u> | <u>Location</u> | <u>Beds</u> |
|-------------------------|-----------------|-----------------------------------|
| Adair Memorial Hospital | Columbia | 36 (not including OB and nursery) |

General hospital facilities - Operating room, delivery room, two emergency rooms, nursery, OB, X-ray and laboratory

Medical staff - 11 doctors (active staff) - one being a radiologist and two being surgeons, 10 doctors (courtesy staff), 13 registered nurses, 12 licensed practical nurses, 4 X-ray technologists, 4 laboratory technicians, and 1 laboratory aide

Nursing Homes

| | <u>Number</u> | <u>Beds</u> |
|---------------------|---------------|-------------|
| Extended care homes | 1 | 50 |
| Personal care homes | 2 | 44 |

Public Health

Facility - Adair County Health Department

Staff - 1 sanitarian, 1 registered nurse, 1 clerk, 1 health officer

Budget 1973-74 - \$36,164

OTHER LOCAL FACILITIES

Communications

Telephone - General Telephone Company - based in Glasgow
Services - standard

Postal - U. S. Post Office
Class - Second
Mail received - Twice daily
Mail dispatched - Twice daily

Newspapers - Adair County News The Columbia Statesman
Weekly and circulation - 2,400 2,800
Other papers received from - Cities in Kentucky, Tennessee and Indiana

Radio - WAIN-AM-FM
Stations received from - Louisville and Lexington, Kentucky; Nashville
Tennessee

Television -
Cable Service
Reception from - Louisville, Lexington and Bowling Green, Kentucky;
Nashville, Tennessee
Kentucky Educational Television - Somerset transmitter, Channel 29

Library Services

Public library - Adair County Public Library
Size collection - 25,847 volumes
Circulation, 1972-73 - 172,425
Services - Story hours, telephone reference services, services to shut-ins, services for the blind and handicapped, general reading lists (special subjects upon request), bookmobile, reading guidance and reference assistance, research center, audio-visual equipment, films, records, filmstrips; community, state, and national interagency referral; special programs (summer reading and other programs), games, framed prints for home and office, special programs presented for organizations upon request, tours for requesting groups, program planning based on community resources, service to local hospitals and convalescent homes, copying service (minimum fee)

Private library - Katie Murrell Library (Lindsey Wilson College)
 Size collection - 16,000 volumes
 Special collections - Periodicals, books, and other publications such as catalogs
 Services - Audio-visual equipment, phonographic records, telephone reference services, reading guidance and reference assistance, special programs, general reading list, order materials on request, reference work

Lake Cumberland Regional Library is also based in Columbia.

Religious Institutions

Number of churches - 9
 Denominations - Baptist, Catholic, Christian, Church of Christ, Church of God, Nazarene, Methodist, Presbyterian, Seventh Day Adventist

Financial Institutions

| <u>Banks</u> | <u>Statement as of June 30, 1973</u> | |
|---------------------|--------------------------------------|-----------------|
| | <u>Assets</u> | <u>Deposits</u> |
| Bank of Columbia | \$10,332,324.02 | \$9,107,175.00 |
| First National Bank | 7,668,790.83 | 6,048,051.50 |

Hotels and Motels

Total number - 4
 Units - 82

Clubs and Organizations

Business and Civic - Chamber of Commerce, Kiwanis, Lions, Rotary, Medical Society, Dental Society, Ministerial Association

Fraternal - American Legion, Masonic Lodge, VFW

Women's - Woman's Club, Business and Professional Women's Club, DAR, Eastern Star, Homemakers

Youth - Boy Scouts, Girl Scouts, Cub Scouts, FFA, FHA, 4-H, FTA, Beta, Key Club, Little League, Pony League

Other - NAACP, Sportsman Club, Farm Bureau

RECREATION

Local

Public Recreation Facilities

Supervised program - yes

Park - 1

Playgrounds - 2

Swimming pool - 1

Tennis courts - 4

Baseball diamonds - 2

Football field - 1

Other - track, boating and fishing in the county

Private Recreation Facilities

Country club - 1

Golf course - 1

Swimming pool - 1

Movie theaters - 1 indoor, 1 drive-in

Area (Within 50 miles)

Green River Lake State Park

Lake Cumberland State Resort Park

General Burnside State Park

Old Mulkey Meeting House State Shrine

Barren River Lake State Resort Park

Mammoth Cave National Park

Abraham Lincoln Birthplace National Historic Site

My Old Kentucky Home State Park

Lincoln Homestead State Park

Perryville Battlefield State Shrine

Constitution Square State Shrine

Isaac Shelby State Shrine

William Whitley House State Shrine

AGRICULTURE - NATURAL RESOURCES - CLIMATE

Agriculture*

| | <u>Adair County</u> | <u>Labor Market Area</u> |
|--|---------------------|------------------------------|
| Total land area (acres) | 236,800 | 1,176,320 |
| Percent of area in farm land | 83.2 | 81.2 |
| Number of farms | 2,186 | 8,982 |
| Average size of farms (acres) | 90.0 | 106.4 |
| 1969 value of all farm products | \$8,216,587 | \$40,226,707 |
| Value per farm | 3,758 | 4,478 |
| Total crop sales | 3,000,591 | 18,580,755 |
| Total livestock & livestock products | 5,106,897 | 21,178,966 |
| 1970 agricultural production included: | | |
| Burley tobacco (lbs.) | 4,309,000 | 26,477,000 |
| Corn (bu.) | 633,000 | 2,443,000 |
| Cattle and calves (number) | 28,900 | 155,700 |
| Hogs and pigs (number) | 11,900 | 64,500 |
| Milk production, 1969 (lbs.) | 52,260,000 | 195,330,000 |

Natural Resources

| | |
|---------------------------------|--|
| Principal mineral resources | Petroleum and limestone |
| Other mineral resources | Natural gas |
| Acres of commercial forest land | 108,000 |
| Most abundant tree species | White oak, red oak, hickory, yellow poplar, beech, hard maple, ash |

*U. S. Department of Commerce, Bureau of the Census, Census of Agriculture, 1969. U. S. Department of Agriculture and Kentucky Department of Agriculture, Kentucky Agricultural Statistics, 1971.

Climate*

Adair County

Temperature

| | |
|---|---------------|
| Annual mean (30-year record) | 59.6 degrees |
| Average annual 1972 | 58.1 degrees |
| Record highest, August, 1968 (12-year record) | 99.0 degrees |
| Record lowest, January, 1966 (12-year record) | - 9.0 degrees |
| Normal heating degree days (30-year record) | 3,494 |
| (Heating degree day totals are the sums of negative departures of average daily temperatures from 65° F.) | |

Precipitation

| | |
|--|--------------|
| Mean annual total (30-year record) | 45.85 inches |
| Mean annual snow and sleet (30-year record) | 13.00 inches |
| Total precipitation 1972 | 58.01 inches |
| Mean number days precipitation (.01 inch or more) (30-year record) | 128 |
| Average number days thunderstorms (30-year record) | 48 |
| Prevailing winds (14-year record) | Northeast |

*U. S. Department of Commerce, Environmental Science Services Administration, Climatological Data, 1972. Station of record: Knoxville, Tennessee.

HISTORY

Adair County, the forty-fourth county established in Kentucky, dates from 1801. Its lands were taken from Green County. Its surface is hilly, and the soil is generally poor based principally on slate. There are a few out-croppings of limestone, and around them the soil is fertile. The Green River and its tributaries drain all of the county except the extreme southern portion which is served by a tributary of the Cumberland River. Most of the streams flow from east to west across the county. The elevation of Adair County is around 750 feet above sea level.

Adair County was named for General John Adair who was born in Chester County, South Carolina. He came to Kentucky in 1786, settled in Mercer County and developed some land, but his chief interest at the time lay in protecting the frontier from the Indians. He served in the later conventions at Danville out of which Kentucky became a state. The people of his county elected him to the State Legislature nine times, five of which were before Adair County was established. He lost popularity momentarily from his conduct and opinions in the Aaron Burr Conspiracy. Later his actions were vindicated on the grounds that he believed Burr's plans had been approved by the United States government. He fought in the Battle of the Thames as Governor Shelby's aide with such bravery that his name was mentioned in the report to the War Department. He was appointed Adjutant General of the Kentucky troops which he commanded later in the Battle of New Orleans. He was elected governor of Kentucky in 1820, served in the United States Senate from 1825 to 1831, and later served in the House of Representatives of Congress for one term.

Columbia, the county seat, was settled about 1793 by William Hurt, a Revolutionary soldier, who built a cabin and cleared the first large area in Adair County. Later he built a two-story brick structure which is one of the buildings of historic interest in Columbia today. The house in which John O'Hara composed one stanza of "The Bivouac of the Dead" stood in the public square. Lindsey Wilson Training School was established in 1903 by Eliza Forte. It was later developed into a Class "A" junior college directed by the Methodist Episcopal Church South. It is accredited by the Southern Association of Colleges and Secondary Schools.

The annual Adair County Fair, held at Columbia in late August, sponsors agricultural exhibits, field sports, and horse racing.

Among the distinguished citizens of Adair County was Jane Lampton, daughter of Benjamin Lampton, who married John Marshall Clemens. Her fourth child, born in Missouri, was Samuel L. Clemens whose pen name, Mark Twain, is world famous.

In 1950 there were 17,603 people in Adair County. By 1960 the number had dropped to 14,699, and declined again in 1970 to 13,037. By 1972, the population had increased slightly to 13,700.

Agriculture accounted for 1,420 jobs of the county's 3,710 jobs in 1971. Principal agricultural products include: burley tobacco, corn, cattle, and hogs. Manufacturing supplied 290 jobs with the heaviest concentration in the apparel industry.

CURRENT INDUSTRIAL RESOURCES, COLUMBIA, KENTUCKY

This is a 1974 supplement to "Industrial Resources, Columbia, Kentucky" which was published in 1973.

Population

| | <u>1972 (Prov.)</u> | <u>1970</u> | <u>1960</u> |
|---|---------------------|-------------|-------------|
| Columbia | N. A. | 3,234 | 2,255 |
| Adair County | 13,700 | 13,037 | 14,699 |
| Labor Market Area | 81,000 | 79,024 | 83,838 |
| (Includes Casey, Cumberland, Green, Metcalfe, Russell, Taylor, and Adair Counties.) | | | |

General Employment Characteristics

| <u>Industry</u> | <u>Employment 1972</u> | |
|--------------------|------------------------|--------------------------|
| | <u>Adair County</u> | <u>Labor Market Area</u> |
| TOTAL | 4,500 | 30,550 |
| Agricultural | 1,370 | 7,940 |
| Nonagricultural | 3,130 | 22,610 |
| Manufacturing | 350 | 7,038 |
| Trade and Services | 626 | 3,444 |
| Government | 440 | 3,060 |
| Other | 1,714 | 9,068 |

Manufacturing Employment

| <u>Type Industry</u> | <u>Adair County</u> | | | <u>Labor Market Area</u> | | |
|---------------------------------------|---------------------|-------------------|----------------|--------------------------|-------------------|----------------|
| | <u>Sept. 1973</u> | <u>Sept. 1963</u> | <u>%Change</u> | <u>Sept. 1973</u> | <u>Sept. 1963</u> | <u>%Change</u> |
| TOTAL | 374 | 264 | 41.7 | 7,471 | 3,880 | 92.6 |
| Food & Kindred Products | 7 | 19 | -63.2 | 386 | 263 | 46.8 |
| Tobacco | 0 | 0 | 0 | 0 | 1 | -100.0 |
| Apparel, Textiles, Leather | 169 | 142 | 19.0 | 5,403 | 2,910 | 85.7 |
| Lumber, Furniture | 131 | 89 | 47.2 | 962 | 671 | 43.4 |
| Printing & Publishing, Paper | 63 | 5 | 1160.0 | 110 | 18 | 511.1 |
| Stone, Clay & Glass | 4 | 9 | -55.6 | 20 | 17 | 17.6 |
| Primary Metals | 0 | 0 | 0 | 75 | 0 | 100.0 |
| Machinery & Metal Products, Equipment | 0 | 0 | 0 | 515 | 0 | 100.0 |

There are presently 16 manufacturing firms in Columbia, Kentucky. Firms, employment, and year started operations:

| <u>Firms</u> | <u>Employment</u> | <u>Year started operations</u> |
|------------------------------|-------------------|--------------------------------|
| Adair Cheese Co. | 6 | 1959 |
| Barnes Milling Co. | 7 | 1965 |
| City Supply Co. | 19 | 1948 |
| The Columbia Statesman | 71 | 1968 |
| Day and Day Feed Mill | 3 | 1960 |
| Delaval Turbine Inc. | 50 | 1973 |
| R. E. Gaddie Inc. | 22 | 1938 |
| Harvey and Bryant Supply Co. | 2 | 1961 |
| Kentucky Tie and Lumber Co. | 9 | 1958 |
| M & W Milling Co., Inc. | 5 | 1946 |
| Morrison Lumber Co. | 25 | 1958 |
| Oshkosh B. Gosh Inc. | 193 | 1964 |
| Roach Manufacturing Co. | 3 | 1940 |
| W. H. Sandusky and Son, Inc. | 9 | 1940 |
| Whitney and Whitney | 17 | 1952 |

Labor Supply

| | <u>Adair County</u> | | | <u>Labor Market Area</u> | | |
|--|---------------------|-------------|---------------|--------------------------|-------------|---------------|
| | <u>Total</u> | <u>Male</u> | <u>Female</u> | <u>Total</u> | <u>Male</u> | <u>Female</u> |
| Current (1973) | 980 | 480 | 500 | 8,310 | 4,120 | 4,190 |
| Potential additions next five years | 1,208 | 595 | 613 | 7,625 | 3,877 | 3,748 |

Personal Income

Adair County, 1971: Per Capita - \$2,325
1961: Per Capita - \$ 808

Local Government

Property Tax Rates

Property tax rates per \$100 of assessed valuation, 1973.

| | <u>Columbia</u> | <u>Adair County</u> |
|--------|-----------------|---------------------|
| State | \$.015 | \$.015 |
| County | .160 | .160 |
| School | .466 | .466 |
| City | .330 | |
| Total | \$.971 | \$.641 |