

1972

Industrial Resources: Bourbon County

Kentucky Library Research Collections
Western Kentucky University, spcol@wku.edu

Follow this and additional works at: https://digitalcommons.wku.edu/bourbon_cty

 Part of the [Business Administration, Management, and Operations Commons](#), [Growth and Development Commons](#), and the [Infrastructure Commons](#)

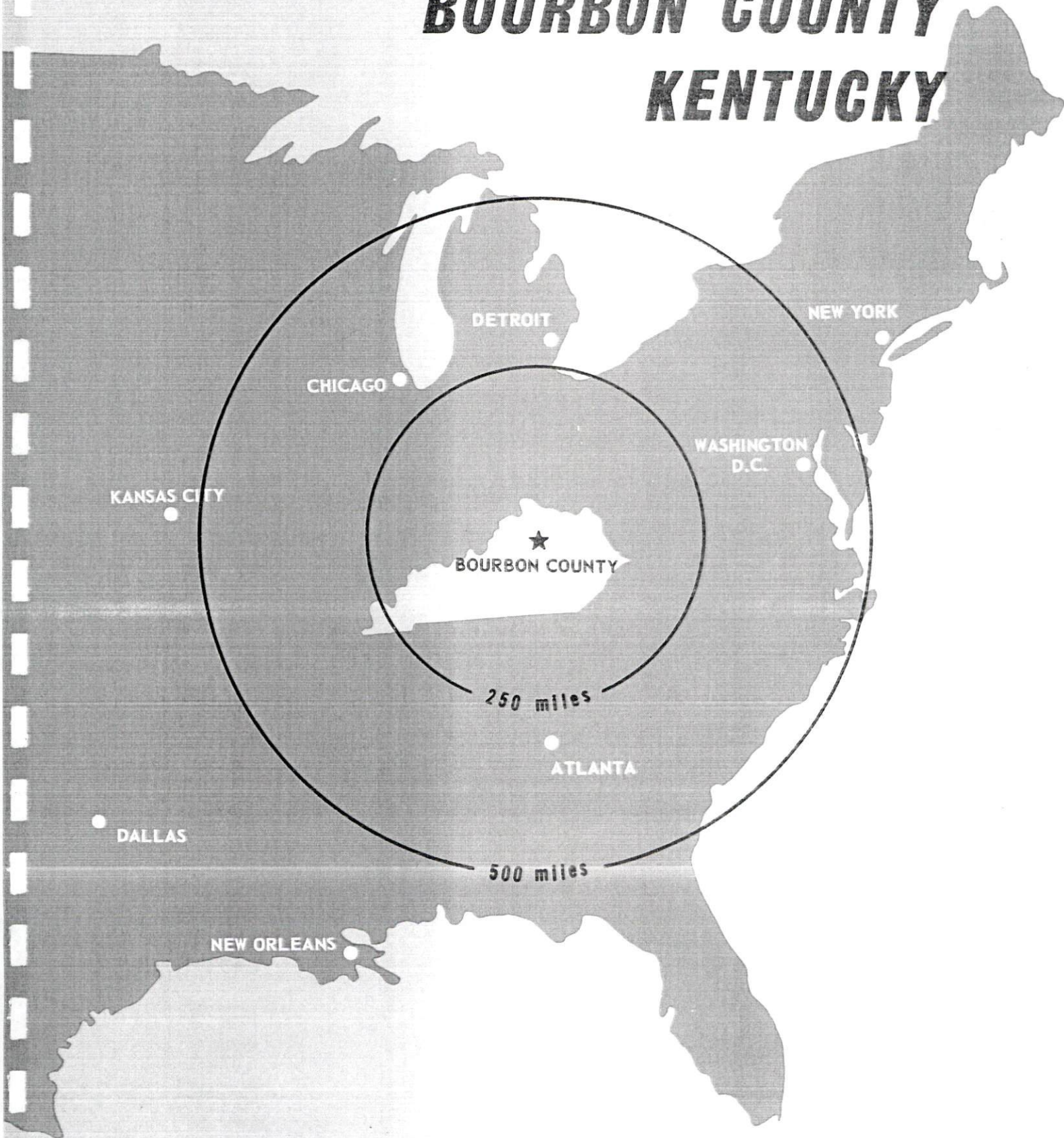
Recommended Citation

Kentucky Library Research Collections, "Industrial Resources: Bourbon County" (1972). *Bourbon County*. Paper 12.
https://digitalcommons.wku.edu/bourbon_cty/12

This Report is brought to you for free and open access by TopSCHOLAR®. It has been accepted for inclusion in Bourbon County by an authorized administrator of TopSCHOLAR®. For more information, please contact topscholar@wku.edu.

INDUSTRIAL RESOURCES

BOURBON COUNTY KENTUCKY

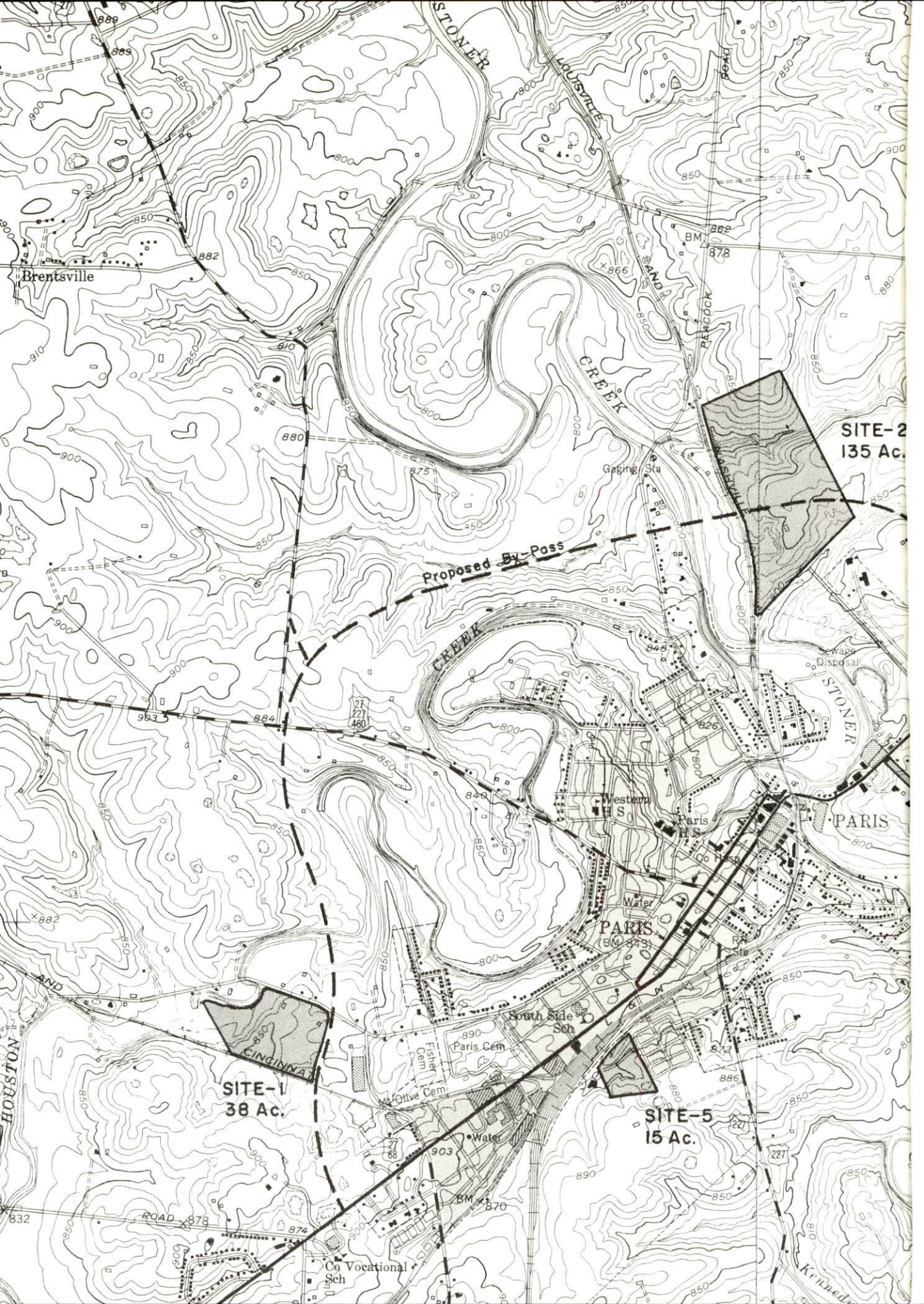


PARIS INDUSTRIAL SITES

1972

For more information about the following sites, contact Mr. James Prater, Bourbon County Industrial Development Corporation, Paris, Kentucky; or the Kentucky Department of Commerce, Frankfort, Kentucky.

- SITE #1: ACREAGE: 38 acres
 LOCATION: West Paris, within city limits
 ZONING: Industrial
 HIGHWAY ACCESS: Northeastern boundary along Fords Mill Road; proposed by-pass along eastern boundary
 RAILROADS: Louisville & Nashville Railroad borders on the south.
 WATER: Paris Water and Sewer Department
 SIZE LINE: 8-inch line, 800 feet from site on 20th Street; 6-inch line on Fords Mill Road at northeastern boundary
 GAS: Columbia Gas Company
 SIZE MAIN: 8-inch main on property
 ELECTRICITY: Kentucky Utilities Company or Paris Municipal Light & Power Company
 SEWERAGE: Paris Water and Sewer Department
 OWNERSHIP: Bourbon County Industrial Development Corporation
- SITE #2: ACREAGE: 135 acres
 LOCATION: North of Paris adjacent to city limits
 ZONING: Agricultural
 HIGHWAY ACCESS: Access road to south border from U. S. 68; site will have access from by-pass.
 RAILROADS: Louisville & Nashville Railroad borders on western boundary.
 WATER: Paris Water and Sewer Department
 SIZE LINE: 6-inch line along northern side of Main Street, approximately 3,700 feet from southern boundary of site; 6-inch line along eastern side of Peacock Road, approximately 600 feet from northwestern boundary of site.
 GAS: Columbia Gas Company
 SIZE MAIN: 4-inch main, approximately 200 feet from northwestern boundary
 ELECTRICITY: Kentucky Utilities Company
 SEWERAGE: Paris Water and Sewer Department
 OPTIONED BY: Bourbon County Industrial Development Corporation
- SITE #3: ACREAGE: 383 acres
 LOCATION: Northeast of Paris; fronts on U. S. 68, 1 1/2 miles from city limits
 ZONING: Agricultural
 HIGHWAY ACCESS: U. S. 68 borders west side of property and unimproved road to Jackstown Road.
 RAILROADS: Louisville & Nashville Railroad on the property
 WATER: Nearest line 1 1/2 miles from city at North Middletown Road
 SIZE LINE: 6-inch line at city limits (Main Street)
 GAS: Columbia Gas Company; nearest main 1 1/2 miles southwest of site.
 ELECTRICITY: Kentucky Utilities Company
 SEWERAGE: Package plant necessary
 OWNERSHIP: Private
- SITE #4: ACREAGE: 13 acres
 LOCATION: Within eastern city limits
 ZONING: Industrial
 HIGHWAY ACCESS: Paved access road from Main Street (U. S. 68)
 RAILROADS: Louisville & Nashville Railroad along southeastern boundary
 WATER: Paris Water and Sewer Department
 SIZE LINE: 8-inch line on southeast boundary of property; 6-inch line along U. S. 68, approximately 800 feet from northwestern boundary
 GAS: Columbia Gas Company
 SIZE MAIN: 2-inch main, 50 to 100 feet from northwest boundary
 ELECTRICITY: Paris Municipal Light & Power Company or Kentucky Utilities Company
 SEWERAGE: Paris Water and Sewer Department
 OWNERSHIP: Farmers Tobacco Warehouse Corporation
- SITE #5: ACREAGE: 15 acres
 LOCATION: South Paris
 ZONING: Industrial
 HIGHWAY ACCESS: Access road from U. S. 227
 RAILROADS: Louisville & Nashville Railroad adjacent to property
 WATER: Paris Water and Sewer Department
 SIZE LINE: 12-inch line, approximately 3 feet from southeast boundary
 GAS: Columbia Gas Company
 SIZE MAIN: 2-inch main at property line on northeast boundary
 ELECTRICITY: Paris Municipal Light & Power Company or Kentucky Utilities Company
 SEWERAGE: Paris Water and Sewer Department
 OWNERSHIP: Louisville & Nashville Railroad Company



Brentsville

SITE-2
135 Ac.

Proposed By-Pass

SITE-1
38 Ac.

SITE-5
15 Ac.

PARIS

PARIS
(90, 823)

Co Vocational
Sch

South Side
Sch

Western
H.S.

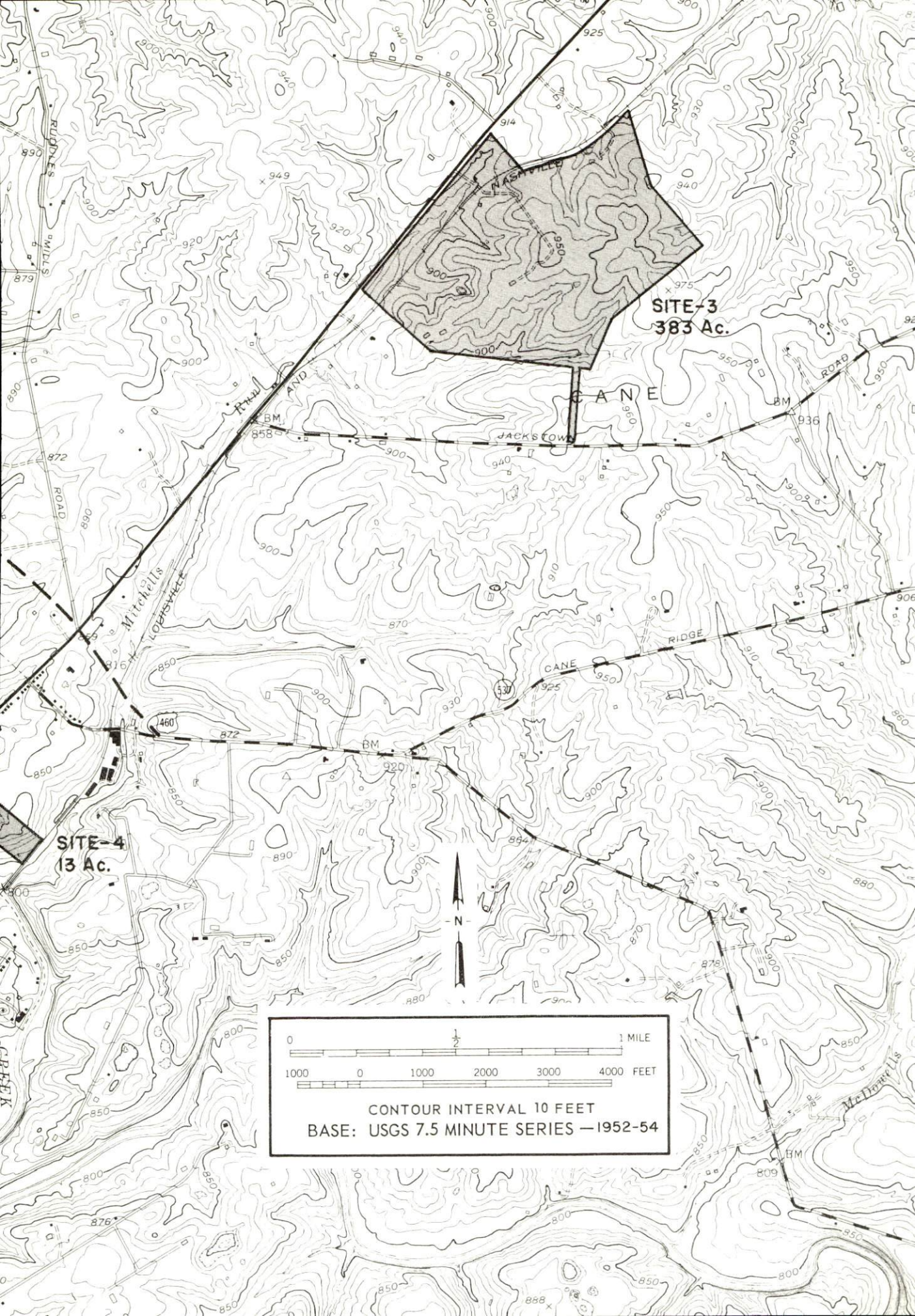
Paris
H.S.

Paris Cem

Fisher
Cem

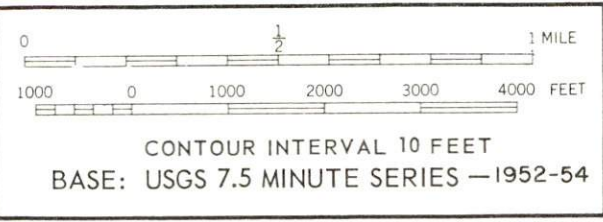
Potive Cem

Kennedy



SITE-3
383 Ac.

SITE-4
13 Ac.



INDUSTRIAL RESOURCES
BOURBON COUNTY, KENTUCKY

Prepared by
The Kentucky Department of Commerce
in cooperation with
The Paris-Bourbon County Chamber of Commerce, Inc.
and
The City of North Middletown

1972

TABLE OF CONTENTS

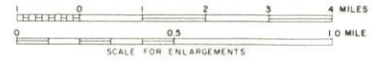
<u>Chapter</u>	<u>Page</u>
INDUSTRIAL SITES	i
BOURBON COUNTY, KENTUCKY - A RESOURCE PROFILE . .	1
THE LABOR MARKET	6
Population Trends.	6
General Employment Characteristics, 1970	6
Manufacturing Employment Trends by Industry.	6
Major Bourbon County Manufacturing Firms, Their Products and Employment	7
Wage Rates for Selected Occupations	7
Labor Organizations.	8
Current and Future Labor Supply	8
Total Personal Income.	8
Per Capita Personal Income	8
EDUCATION	11
Public Schools	11
Parochial and Private Schools	11
Vocational Schools	12
Colleges and Universities	13
TRANSPORTATION	15
Rail	15
Truck Service	15
Air	16
Bus	16
Taxi.	16
Rental Services.	16
POWER AND FUEL	17
Electricity	17
Natural Gas	17

<u>Chapter</u>	<u>Page</u>
WATER AND SEWERAGE	19
Water	19
Sewerage	20
LOCAL GOVERNMENT	22
City	22
County	22
Assessed Value of Property, 1971	22
Local General Property Tax Rates Per \$100 of Assessed Valuation, 1971	22
Planning and Zoning	23
Safety	23
Police	23
Fire	23
Sanitation	24
HEALTH	25
Hospitals	25
Nursing Homes	25
Public Health	25
OTHER LOCAL FACILITIES	27
Communications	27
Library Services	27
Religious Institutions	28
Financial Institutions	28
Hotels and Motels	28
Clubs and Organizations	28
RECREATION	30
Local	30
Area	30
AGRICULTURE - NATURAL RESOURCES - CLIMATE	33
Agriculture	33
Natural Resources	33
Climate	33
HISTORY	34

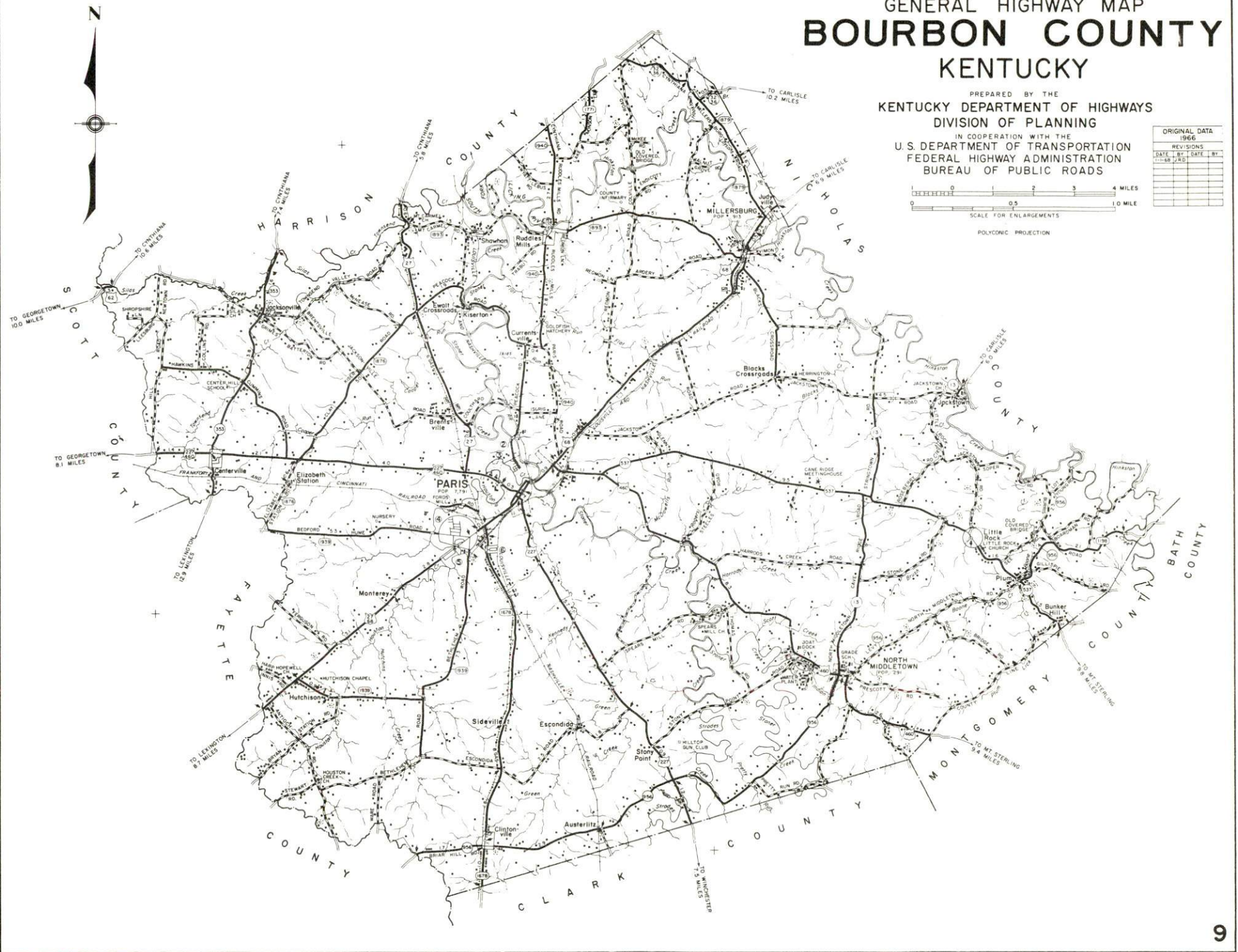
GENERAL HIGHWAY MAP BOURBON COUNTY KENTUCKY

PREPARED BY THE
KENTUCKY DEPARTMENT OF HIGHWAYS
DIVISION OF PLANNING
IN COOPERATION WITH THE
U.S. DEPARTMENT OF TRANSPORTATION
FEDERAL HIGHWAY ADMINISTRATION
BUREAU OF PUBLIC ROADS

ORIGINAL DATA	
1966	
REVISIONS	
DATE	BY



POLYCONIC PROJECTION

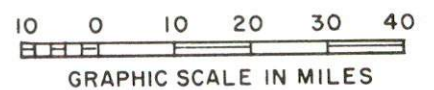
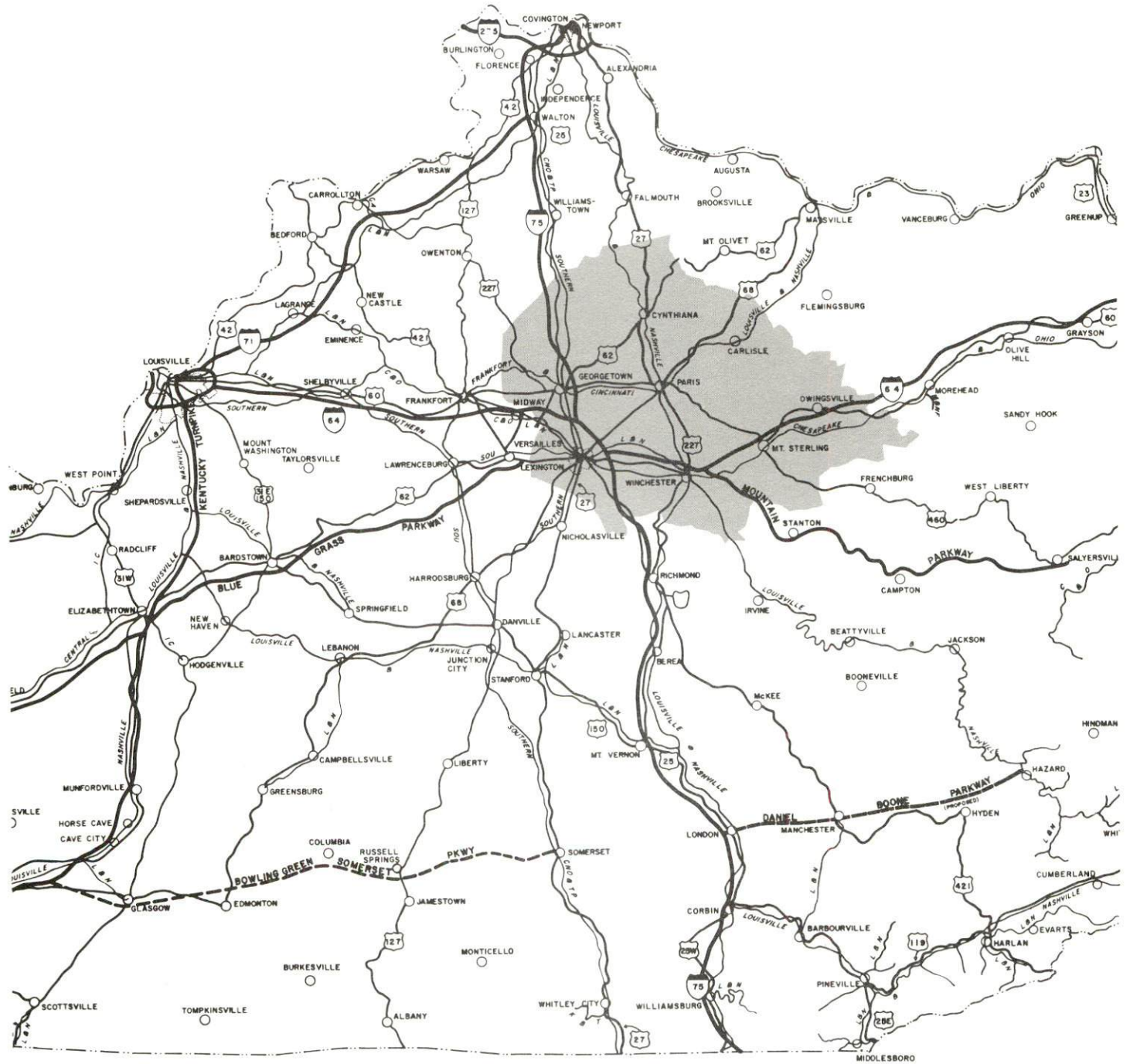




AERIAL VIEW OF PARIS, KENTUCKY

BOURBON COUNTY LABOR MARKET AREA

Shaded area denotes labor market area



BOURBON COUNTY, KENTUCKY - A RESOURCE PROFILE

Location

Bourbon County is located in central Kentucky in the heart of the Bluegrass Region. Established in 1785, Bourbon County is rich in history and tradition, and is noted for its beautiful horse farms.

Paris, the county seat of Bourbon County, was designated all All-Kentucky City in 1971. Paris is 15 miles from Lexington, Kentucky; 90 miles from Louisville, Kentucky; and 74 miles from Cincinnati, Ohio.

North Middletown is situated in the southwestern part of Bourbon County approximately 9 miles from Paris.

Bourbon County had a 1970 population of 18,476. Paris had a 1970 population of 7,823 while North Middletown had a population of 433.

The Economic Framework

Total employment in Bourbon County averaged 6,500 jobs in 1970, with manufacturing providing 1,000 jobs, trade and services 1,215, government 1,100, and agriculture 1,400. During the past decade manufacturing employment increased 12.4 percent. The county's major products are apparel and motor vehicle parts.

Per capita income in the county in 1969 was \$2,780. This figure represents a 93.6 percent increase since 1959, when it was \$1,436.

In the Bourbon County labor market area, which includes Bourbon County and its seven surrounding counties, total employment in 1970 averaged 132,100. Manufacturing provided 27,280 of these jobs, trade and services 36,630, and government 22,820. A large percentage of the area employment is found in Fayette County. The greatest increase in area industrial employment since 1960 has been in the machinery and metal products industries.

Resources for Growth

1. Labor supply - The current labor supply is estimated at 4,290 men and 3,670 women who are available for industrial jobs in the labor market area. In addition, 13,230 young men and 12,770 young women in the area will have become 18 years of age by 1978 and potentially available for work.

2. Transportation - The local transportation capability is satisfactory. Paris is only 16 miles east of Interstate 75 via U. S. 227 and 460, and 15 miles north of Winchester, via U. S. 227, where Interstate 64 and the Mountain Parkway converge. U. S. 27 and 68 from Paris to Lexington is to be four-laned in the near future.

North Middletown, served by U. S. 460, is only 15 miles northwest of Interstate 64.

The Louisville & Nashville Railroad serves Paris with a variety of services. Commercial air service is available at Lexington, only 20 miles from Paris.

3. Energy - Columbia Gas of Kentucky, Inc., serves Paris with natural gas. North Middletown is supplied natural gas by the North Middletown Gas & Water Company. Electric power is supplied to Paris by the Paris Light and Power Department and the Kentucky Utilities Company. The Kentucky Utilities Company also serves North Middletown and portions of Bourbon County. Clark RECC and Harrison County RECC also serve customers in Bourbon County.

4. Industrial sites - Paris has 5 sites available for industrial use.

5. Education - Millersburg Military Institute, a private military academy, is located 8 miles from Paris. The University of Kentucky and Transylvania University are located 15 miles distant. In addition, there are two other universities, five senior colleges, and three junior colleges within a 60-mile radius of Paris.

Community Programs for Improvement

Recent improvements to the community include nine new businesses, and eighteen firms which have completed extensive remodeling within the past year.

The library has had extensive renovation and enlargement to provide better service for the people. Summer reading programs for the children, service to shut-ins, audio-visual services, films, phonograph records are now available. A large meeting room is available for organizations.

Both the city and county school systems are making excellent progress in enhancing the educational programs. The city school system recently completed a building program at a total cost of \$1,250,000, which included 28 classrooms plus offices, library facilities for an elementary building, a 500-seat capacity cafeteria, a 500-seat capacity auditorium, and music facilities for band and general music. A \$410,000 addition and renovation of Southside Middle School is underway, with the addition of 3 classrooms, home economics and industrial arts facilities and art room, plus the renovation and enlargement of the cafeteria and library.

The county school system has initiated an Environmental Program, the first one of this type in Kentucky. The program is in three areas: (1) Outdoor laboratory covering 5 acres on the Bourbon County high and junior high school campus has been donated to the laboratory. The lot will consist of an outdoor classroom, wildlife attraction area, tree and shrub identification area, nature trail and soil conservation area. (2) Material Center: environmental books, film strips, slides, magazines and other teaching aids are being collected for teacher and student use. (3) Unit development materials will be written that can be used with the subject matter areas that are now in existence.

The YMCA has been remodeled and expanded at the cost of \$270,000. A new indoor and one new outdoor Olympic-size swimming pool have been added. A new health club with sauna, exercise and steam rooms is now in operation. The YMCA with its trained personnel now operates Garrard Park for the city. Construction is underway for increased parking area at the American Legion Park.

The city's Urban Renewal project has cleared over 20 acres for three separate housing projects. Thirty-eight building lots have been designated for low and moderate income single family homes. Thirty housing units for the elderly and thirty low-rent public housing units are nearing completion. The majority of the single family lots already have homes built on them and families are now occupying them.

The W. R. Stampler Corporation at Millersburg has built a new, additional 10,000-square foot building. Also, the Hinkle Contracting Corporation has constructed an 8,000-square foot addition to its present building.

Blue Grass West Mental Health Center is now established in Bourbon County. The Center serves three counties: Bourbon, Nicholas, and Harrison.

Communications systems have been improved and cable TV service is now being installed. South Central Bell Telephone Company now provides "touch tone" service for its customers in the city and county.

The state headquarters for the Garden Clubs of Kentucky recently was established in Paris.

The city's Community Beautification Committee has constructed several "mini" parks in small areas of the community.

Planned improvements include construction of a bypass around the business section of Paris. A portion of the bypass should be under construction in 1972; a four-lane highway - Paris to Lexington - by mid-1974.

South Central Bell Telephone Company plans to increase its service potential with the addition of 3,000 new lines to serve the anticipated growth in the county.

The city's Water Works Department in the near future will change the sand filtration treatment process to a filtration process that will be half sand, half granular carbon filtration. The Paris Light and Power Department plans a complete efficiency analysis of its electric power service with ultimate plans to increase generating power. The City Street Department is planning a long range road improvement priority plan for the next four years. The city plans to purchase a new fire truck.

Subdivision developers in the county are planning a new subdivision development. A shopping center is scheduled for construction in 1973.

Recreation, Entertainment and Livability

Garrard Park, located on a 30-acre tract along Stoner Creek, includes two shelter houses, playground equipment, ovens and grills, tennis courts, picnic areas supplied with benches and tables, a lighted baseball diamond and grandstand, a football field, and a lighted softball field with stands. A recreation supervisor from the YMCA is on duty during the summer months.

The American Legion Park has an exhibition hall and show ring. Events at the park include horse shows and the annual Bourbon County Fair.

The Stoner Creek Country Club, a private club, has a 9-hole golf course, swimming pool, tennis courts and a clubhouse.

The YMCA provides indoor sports including swimming plus an outdoor Olympic pool. A health club is in operation. Two full-time supervisors are employed.

The Roost Club is managed by a recreational director and open on the week-ends during the school months and on Tuesday and Friday evenings during the summer.

The public school ground has a baseball diamond.

The Hanson Street Youth Center offers indoor recreation including ping-pong, pool, dancing, and various group games. There are swings, slides, and basketball goals provided on the playground.

There is a 16-lane bowling alley, a downtown movie theater and drive-in theater.

Recreation in the Bourbon County area is varied and plentiful. Within an easy driving distance is the state's Capital city - Frankfort; Fort Boonesboro State Park, near Richmond; and Blue Licks Battlefield State Park, near Mt. Olivet.

Keeneland Race Course in Lexington, one of America's most beautiful tracks, offers excellent Thoroughbred racing during the spring and fall meets.

The world-famous Big Red Mile, home of the Lexington Trots, is one of America's foremost Standardbred tracks.

Several riding clubs and hunt clubs are in the area.

Intercollegiate athletic competition is found at the University of Kentucky. The University of Kentucky competes in several varsity sports - basketball, football, baseball, tennis, track, and golf.

THE LABOR MARKET

POPULATION TRENDS ^{1/}

Area	Population			Percent Change	
	1970	1960	1950	1960-70	1950-60
Paris	7,823	7,791	6,912	+ 0.4	+12.7
North Middletown	433	291	319	+48.8	- 8.8
Labor Market Area	280,102	229,491	201,240	+22.1	+14.0
Bourbon County	18,476	18,178	17,752	+ 1.6	+ 2.4
Bath County	9,235	9,114	14,410	+ 1.3	-36.8
Clark County	24,090	21,075	18,898	+14.3	+11.5
Fayette County	174,323	131,906	100,746	+32.2	+30.9
Harrison County	14,158	13,704	13,736	+ 3.3	- 0.2
Montgomery County	15,364	13,461	13,025	+14.1	+ 3.4
Nicholas County	6,508	6,677	7,532	- 2.5	-11.4
Scott County	17,948	15,376	15,141	+16.7	+ 1.6

GENERAL EMPLOYMENT CHARACTERISTICS, 1970 ^{2/}

Major Employment Group	Employment	
	Bourbon County	Labor Market Area
TOTAL	6,500	132,100
Agricultural	1,400	10,000
Nonagricultural	5,100	122,100
Manufacturing	1,000	27,279
Trade and Services	1,215	36,632
Government	1,100	22,820

MANUFACTURING EMPLOYMENT TRENDS BY INDUSTRY SEPTEMBER 1970 AND 1960 ^{3/}

Industry	Bourbon County			Labor Market Area		
	1970	1960	% Change	1970	1960	% Change
TOTAL	981	873	+12.4	26,900	14,081	+ 91.0
Food & kindred products	19	17	+12.0	1,402	1,597	- 12.2
Tobacco	4	37	- 8.9	1,094	1,287	- 15.0
Apparel, textiles, leather	686	417	+64.5	3,830	1,925	+ 99.0
Lumber & furniture	5	35	- 8.6	608	369	+ 65.0
Printing, publishing, paper	23	23	--	1,416	888	+ 59.5
Chemicals, petroleum, coal, rubber	0	0	--	1,069	141	+658.2
Stone, clay & glass	6	33	- 8.2	481	538	- 11.0
Primary metals	0	0	--	935	300	+ 21.2
Machinery & metal products	238	311	-23.5	15,159	6,625	+ 12.9
Other	0	0	--	906	411	+ 12.0

MAJOR BOURBON COUNTY MANUFACTURING FIRMS,
THEIR PRODUCTS AND EMPLOYMENT ^{4/}

<u>Firm</u>	<u>Product</u>	<u>Employment</u>		
		<u>Total</u>	<u>Male</u>	<u>Female</u>
<u>Paris</u>				
Blue Grass Industries	Disposable surgeons' gowns, nurses' caps, bath kilts	248	26	222
Gay-Bell Corp.	Prefabricated containers, metal stampings, tobacco hogsheds	27	25	2
The Grapette Bottling Co. Hansley, Inc.	Carbonated beverages Men's slacks, leisure wear, swimwear, gym wear	16 457	15 39	1 418
Industrial Products Div., Dura Corp., Walter Kidde & Co., Inc.	Tandem and single axle suspensions, motor vehicle parts, hydraulic system for hospital beds	199	87	12
The Paris Daily Enterprise	Newspaper, job printing	20	12	8
Parker Tobacco Co., Inc.	Tobacco prizing, redrying	43	25	18
Woodford Spears & Sons	Feed	32	30	2
<u>Millersburg</u>				
The W. R. Stampler Corp.	Conveyor belt feeder-breakers, hydraulic mine and railroad car movers	60	56	4

WAGE RATES FOR SELECTED OCCUPATIONS
PARIS, KENTUCKY ^{5/}

<u>Classification</u>	<u>Wages Per Hour</u>		
	<u>Starting</u>	<u>Maximum</u>	<u>Prevailing</u>
<u>Production Employees</u>			
Assembler	\$1.75	\$2.25	\$1.88
Inspector	1.90	2.50	2.25
Production Laborer	1.85	2.35	2.25
Welder, Arc or Acetylene (Class-A)	2.50	3.00	2.75
<u>Service Employees</u>			
Electrician (Class-A)	\$2.75	\$4.00	\$3.50
Laborer	1.65	2.50	2.25
Machinist	2.50	3.50	3.00
Mechanic, Maintenance	2.75	3.75	3.25
Truck Driver, Industrial (Class-A)	2.50	3.50	3.00

(cont'd)

<u>Classification</u>	<u>Wages Per Hour</u>		
	<u>Starting</u>	<u>Maximum</u>	<u>Prevailing</u>
<u>Office Employees</u>			
Bookkeeper	\$1.85	\$2.50	\$2.25
File Clerk	1.65	2.00	1.80
Receptionist	1.75	2.25	2.10
Secretary	2.00	3.00	2.50
Typist	1.65	2.25	2.00

LABOR ORGANIZATIONS

<u>Union</u>	<u>Representing Workers at:</u>
Allied Industrial Workers of America	Dura Corporation
Amalgamated Clothing Workers of America	Hansley, Inc.

CURRENT AND FUTURE LABOR SUPPLY -
BOURBON COUNTY LABOR MARKET AREA

<u>Area</u>	<u>Current Labor Supply, 1971 ^{6/}</u>			<u>Future Labor Supply by 1978 ^{7/}</u> (Becoming 18 Year of Age)		
	<u>Total</u>	<u>Male</u>	<u>Female</u>	<u>Total</u>	<u>Male</u>	<u>Female</u>
Labor Market Area	7,961	4,288	3,673	26,009	13,235	12,774
Bourbon	606	192	414	1,819	944	875
Bath	1,491	1,001	490	927	485	442
Clark	833	396	437	2,297	1,158	1,139
Fayette	2,611	1,498	1,113	15,698	7,973	7,725
Harrison	570	265	305	1,378	686	692
Montgomery	794	418	376	1,596	834	762
Nicholas	473	237	236	630	335	295
Scott	583	281	302	1,664	820	844

TOTAL PERSONAL INCOME ^{8/}

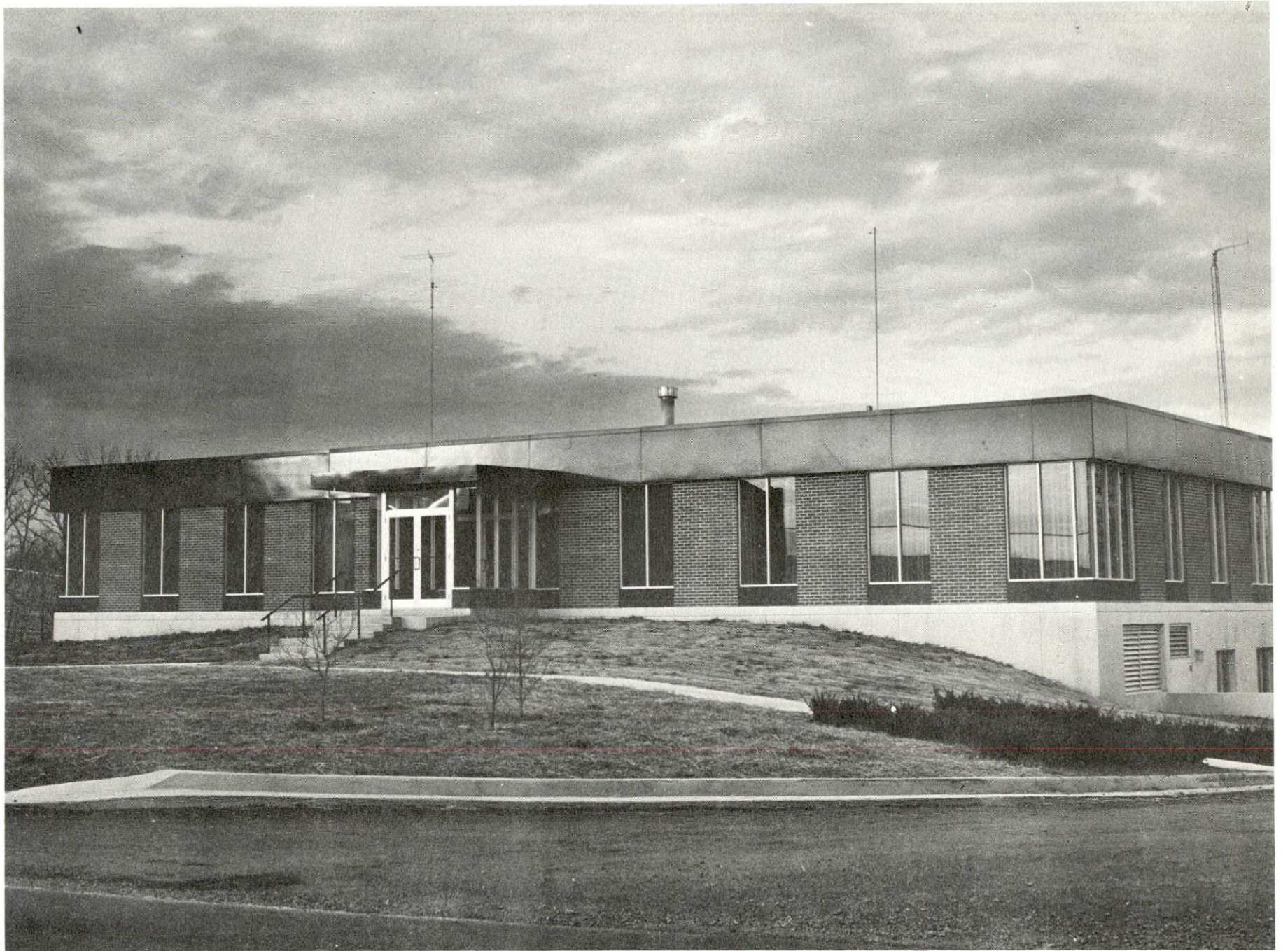
<u>Area</u>	<u>1969</u>	<u>1959</u>	<u>% Change</u>
Bourbon County	\$ 50,584,000	\$ 24,749,000	+104.4
Labor Market Area	956,243,000	397,078,000	+140.8
Kentucky	9,202,000,000	4,655,000,000	+ 97.6

PER CAPITA PERSONAL INCOME ^{9/}

<u>Area</u>	<u>1969</u>	<u>1959</u>	<u>% Change</u>
Bourbon County	\$2,780	\$1,436	+93.6
Labor Market Area	\$1,690 to 3,920	\$864 to 1,954	N. A.
Kentucky	2,847	1,552	+83.4



BLUE GRASS INDUSTRIES



HINKLE CONTRACTING CORP.

EDUCATION

Public Schools

	<u>Paris</u>	<u>Bourbon County</u>
Total Enrollment	1,530	2,672
Elementary	700	1,411
Middle School	350	475
High School	480	786
Student-Teacher Ratio	22-1	23-1
Elementary	25-1	24-1
Middle School	26-1	25-1
High School	17-1	20-1
State Rating of High School	Comprehensive	Comprehensive
Other Accreditations	Southern Association of Colleges and Schools	Southern Association of Colleges and Schools
Percent High School Graduates to College	33.7	30.8
Current Expenditures Per Pupil	\$472.86	\$537.35
Bonded Indebtedness, June 30, 1971	\$1,701,000	\$2,022,000

Parochial and Private Schools

	<u>Private</u>	<u>Parochial</u>
Total Enrollment	200	62
Elementary	50 (6-8)	62 (1-6)
High School	150 (9-12)	--
Student-Teacher Ratio	11-1	21-1
Elementary	12-1	21-1
High School	11-1	--
State Rating of High School	Standard	

Vocational Schools

Nearest Area School

Location	Central Kentucky Vocational School Lexington
Miles Distant	15 miles from Paris
Curriculum	Accounting Junior Management General Clerical Secretarial-Steno Practical Nursing Electronics (Communications) Technical Drafting Auto Body Repair Auto Mechanics Commercial Foods Cosmetology Drafting Electricity Machine Shop Office Machine Repair Printing Radio and TV Repair Sheet Metal Tool and Die Making Welding

Nearest Extension Centers

Location	Fayette County Lexington	Harrison County Cynthiana
Miles Distant	15 miles from Paris	15 miles from Paris
Curriculum	Horticulture Health Careers Nurses Aide Air Conditioning and Refrigeration Auto Body Repair Auto Mechanics Carpentry Electricity Machine Shop Welding	General Clerical Secretarial-Steno Auto Mechanics Carpentry Drafting Machine Shop Welding

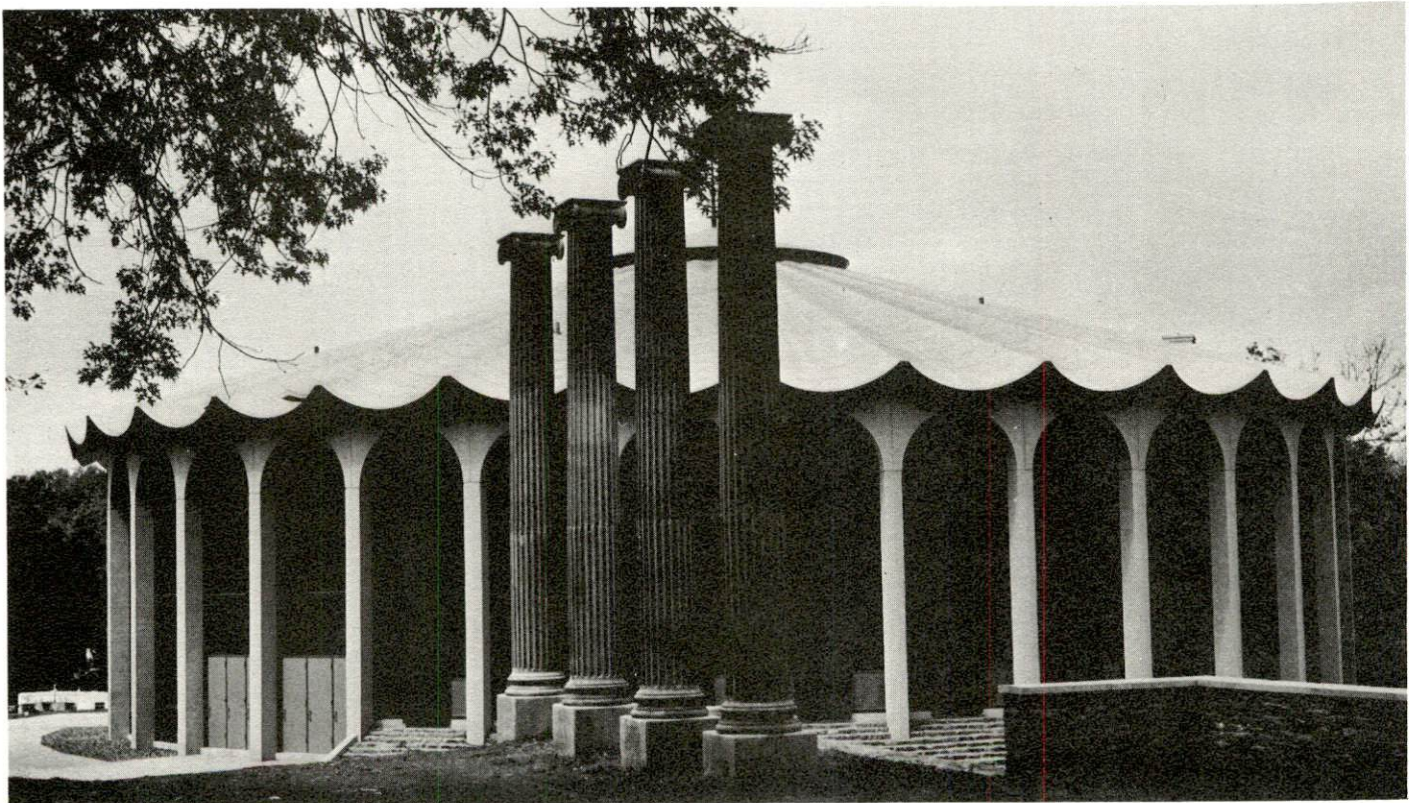
Colleges and Universities

<u>Name</u>	<u>Area - Within 60 Miles</u>		<u>Highest Degree Conferred</u>
	<u>Location</u>	<u>Enrollment</u>	
University of Kentucky	Lexington	19,258	Ph. D., M.D., D.M.D., J.D.
Transylvania University	Lexington	775	Masters
Lexington Technical Institute	Lexington	*	Associate
Kentucky State College	Frankfort	1,970	Baccalaureate
Georgetown College	Georgetown	1,299	Masters
Asbury College	Wilmore	1,091	Baccalaureate
Eastern Kentucky University	Richmond	10,170	Masters
Berea College	Berea	1,448	Baccalaureate
Centre College	Danville	717	Baccalaureate
Morehead State University	Morehead	6,255	Masters
Southeastern Christian College	Winchester	122	Associate
Midway Junior College	Midway	187	Associate

*Included in University of Kentucky (Lexington) enrollment.



NEW PARIS CITY SCHOOL



FINE ARTS CENTER - PARIS HIGH SCHOOL

TRANSPORTATION

Rail

Line serving Paris - Louisville & Nashville Railroad

Services - Freight, siding, switching, REA Express pickup and delivery.
Nearest piggyback service - Lexington, 15 miles

Line serving North Middletown - Nearest line in Paris, 9 miles distant

RAILWAY TRANSIT TIME FROM PARIS, KENTUCKY, TO: 10/

<u>City</u>	<u>No. of Days</u>		<u>City</u>	<u>No. of Days</u>	
	<u>CL</u>			<u>CL</u>	
Atlanta, Ga.	2		Los Angeles, Calif.	4	
Birmingham, Ala.	2		Louisville, Ky.	1	
Chicago, Ill.	2		Nashville, Tenn.	2	
Cincinnati, Ohio	1		New Orleans, La.	3	
Cleveland, Ohio	2		New York, N. Y.	3	
Detroit, Mich.	3		Pittsburgh, Pa.	3	
Knoxville, Tenn.	1		East St. Louis, Ill.	2	

Truck Service

Company

Home Office

Paris

Cooper-Jarrett, Inc.	Orange, New Jersey
Bourbon Transfer Co.	Paris, Kentucky
Dixie Ohio Express, Inc.	Akron, Ohio
Ecklar-Moore Express, Inc.	Lexington, Kentucky
McDaniel Motor Express, Inc.	Lexington, Kentucky
McLean Trucking Co.	Winston-Salem, North Carolina
Motor Freight Corp.	Terre Haute, Indiana
Turner Expediting Service	Louisville, Kentucky

North Middletown

McDaniel Motor Express, Inc.	Lexington, Kentucky
------------------------------	---------------------

HIGHWAY MILES AND TRUCK TRANSIT TIME IN DAYS FROM
PARIS, KENTUCKY, TO SELECTED MARKET CENTERS

City	Highway Miles	Delivery Time ^{11/}		City	Highway Miles	Delivery Time	
		LTL	TL			LTL	TL*
Atlanta, Ga.	400	3	2	Los Angeles, Calif.	2,197	6	5
Birmingham, Ala.	425	3	2	Louisville, Ky.	90	overnight	
Chicago, Ill.	367	2	1	Nashville, Tenn.	238	2	1
Cincinnati, Ohio	74	overnight		New Orleans, La.	776	3	2
Cleveland, Ohio	326	2	1	New York, N. Y.	752	3	2
Detroit, Mich.	343	2	1	Pittsburgh, Pa.	364	2	1
Knoxville, Tenn.	208	2	1	St. Louis, Mo.	354	2	1

*Truckloads, if necessary, can be expedited one day less than shown above.

Air

	<u>Nearest Local</u>	<u>Nearest Commercial</u>
	Cynthiana-Harrison County Airport	Blue Grass Field
Location:	1 1/2 miles south of Cynthiana, 13 miles from Paris	20 miles from Paris at Lexington
Runways:	1 paved	3 paved
Length:	3,200 feet	6,500 feet; 3,500 feet, 3,500 feet
Traffic		
Control:	Wind sock and lighted wind tee	Tower, approach and ground control, ILS system
Lighting:	Runway lights, sundown to sunrise	Approach lighting system, beacon, runways and obstruction lighted
Services:	80-100 octane, hangar and tie down, taxi and U-Drive-It	Eastern, Delta, Piedmont and Allegheny Airlines; 80, 100 and 145 octane; jet fuel; major A & E repairs; storage; restaurant; Weather Bureau; flight instruction; charter service; taxi; U-Drive-It service

Bus

Southern Greyhound Bus Line

Taxi

Two taxi companies, 24-hour service, 1 radio dispatch service

Rental Services - Paris - U-Haul-It Service, trucks and trailers
North Middletown - Nearest rental service, Paris, 9 miles

POWER AND FUEL

Electricity

Company serving Paris - Paris Light and Power Department

Source of power (1) Paris Light and Power Department (2) Kentucky Utilities Company

Total generating capacity - (1) 5,500 KW (2) 1,215,000 KW

Industrial rates furnished by - Paris Light and Power Department, Paris, Kentucky

Company serving Paris, North Middletown, and Bourbon County - Kentucky Utilities Company

Source of power - Kentucky Utilities Company

Total generating capacity - 1,215,000 KW

Industrial rates furnished by - Kentucky Utilities Company, Industrial Development Department, Lexington, Kentucky

Company serving Bourbon County - Clark RECC and Harrison County RECC

Source of power - East Kentucky Power Cooperative

Total generating capacity - 548,000 KW

Industrial rates furnished by - Clark RECC, Winchester, Kentucky; Harrison County RECC, Cynthiana, Kentucky

Natural Gas

Company serving Paris - Columbia Gas of Kentucky, Inc.

Source of supply - Columbia Gas Transmission Company

Size of transmission lines - 8-inch (supplier); 8-inch (distributor)

Distribution lines - 10, 8, 6, 4, 3, and 2 inches

Btu content - 1,020; Specific gravity - .06

Monthly rates -

First	1,000 cu. ft.	\$2.4126
Next	49,000 cu. ft.	.9226 per 1,000 cu. ft.
Next	50,000 cu. ft.	.8926 per 1,000 cu. ft.
Next	100,000 cu. ft.	.8526 per 1,000 cu. ft.
Next	800,000 cu. ft.	.8326 per 1,000 cu. ft.
Over	1,000,000 cu. ft.	.8126 per 1,000 cu. ft.
Minimum Bill		\$2.30

Company serving North Middletown - North Middletown Gas and Water Co.

Source of supply - Columbia Gas Transmission Company

Size of transmission line - 2 1/2 inches (distributor)

Distribution lines - 2, 1 1/2, 1 1/4, and 1 inches

Distribution pressure - 4 oz.

Rates (per month) -

First	2,000 cu. ft.	\$4.00 (minimum)
Next	5,000 cu. ft.	.90 per 1,000 cu. ft.
Next	13,000 cu. ft.	.80 per 1,000 cu. ft.
Over	20,000 cu. ft.	.70 per 1,000 cu. ft.

WATER AND SEWERAGE

Water

Company serving Paris - Paris Water Works Department

Source - Stoner Creek

Treatment plant capacity - 3,000,000 gpd

Average daily consumption - 950,000 gallons

Peak daily consumption - 1,343,000 gallons

Type treatment - Settling basins with rapid sand filtration, alum, lime

Storage capacity - 1,909,000 gallons

Size mains - 4, 6, and 8 inches

Average pressure - 80 psi

Average temperature - 50° F.

MONTHLY WATER RATES FOR WHOLESALE AND INDUSTRIAL CONSUMERS

First	2,000 gallons	\$3.40 (minimum)
Next	8,000 gallons	.90 per 1,000 gallons
Next	20,000 gallons	.85 per 1,000 gallons
Next	20,000 gallons	.75 per 1,000 gallons
Next	50,000 gallons	.65 per 1,000 gallons
Next	50,000 gallons	.60 per 1,000 gallons
Over	150,000 gallons	.50 per 1,000 gallons

For county residents - add 40 percent to above rate for water service

Note: The minimum shown above applies to 5/8-inch or 3/4-inch meters.

Minimum bill for larger meters is:

1-inch meter	\$ 5.25
1 1/2-inch meter	7.50
2-inch meter	10.50
3-inch meter	15.00
4-inch meter	30.00
6-inch meter	60.00

For larger customers using over 150,000 gallons per month, multiply gallons used by 50¢ and add \$30.10 (plus 40 percent for county users)

Private Fire Protection

Fire hydrant	\$ 7.50 per month
Sprinkler system - 4-inch connection	15.00 per month
Sprinkler system - 6-inch connection	15.00 per month
Sprinkler system - 8-inch connection	15.00 per month
Municipal fire hydrants	3.50 per month

Company serving North Middletown - North Middletown Gas and Water Co.
Source - Stoner Creek
Treatment plant capacity - 144,000 gpd
Average daily consumption - 60,000 gallons
Peak daily consumption - 90,000 gallons
Type treatment - chlorine, alum, lime
Storage capacity - 60,000 gallons
Size mains - 4, 2, and 1 1/2 inches
Average pressure - 50 psi
Average temperature - 50° F.

MONTHLY WATER RATES FOR WHOLESALE
AND INDUSTRIAL CONSUMERS

First	2,000 gallons	\$4.00 (minimum)
Next	3,000 gallons	.90 per 1,000 gallons
Next	5,000 gallons	.75 per 1,000 gallons
Next	40,000 gallons	.55 per 1,000 gallons
Next	50,000 gallons	.50 per 1,000 gallons
Next	50,000 gallons	.45 per 1,000 gallons
Next	150,000 gallons	.40 per 1,000 gallons

Surface water sources - Licking River's Stoner Creek
Average discharge - Stoner Creek at Paris - 248 cfs (16-year record)
(USGS)
Expected ground water yield - 5 to 200 gpm in center of county grading
out to 5 gpm or less

Sewerage

Company serving Paris - Paris Water & Sewer Department
Design capacity - 2,200 gpm
Average daily flow - 700,000 gallons
Treatment - Primary and secondary
Type treatment - Clarifier, trickling filters and drying beds
Treated effluent discharged into - Stoner Creek
Size of sanitary mains - 8, 10, and 12 inches
Size of storm mains - 15, 18, 24 and 36 inches
Rates - 70 percent of net water bill; for county residents - add to
rate for sewer service - 40 percent.

Company serving North Middletown - North Middletown Gas & Water Co.

Design population - 580

Type treatment - 3 lagoons

Treated effluent discharged into - Indian Creek

Size of sanitary mains - 8 and 6 inches

Rates - 80 percent of monthly water bill

LOCAL GOVERNMENT

City

Paris

Structure - Mayor - 4-year term; 4 commissioners - 4-year terms
 Budget 1971 - General Fund \$360,000; Water and Sewer Fund \$444,200;
 Electric Fund \$462,500
 Fees and licenses - Auto sticker \$10 annual fee; business and occupational
 license fees \$15 and up annually

North Middletown

Structure - Mayor - 4-year term; 6 councilmen - 2-year terms
 Budget 1971 - General Fund \$6,700; Water, Sewer and Gas Fund \$50,000
 Fees and licenses - Car sticker \$10 annually; business license fee \$15
 annually; truck sticker varies from \$15 to \$30, according to weight of
 truck

County

Structure - County Judge - 4-year term; 8 magistrates - 4-year terms
 Budget 1971-72 - General Fund \$168,625; Road Fund \$193,900

Assessed Value of Property, 1971

<u>Classes of Property*</u>	<u>Paris</u>	<u>North Middletown</u>	<u>Bourbon County</u>
Real Estate & Tangibles	\$37,189,294		
Real Estate		\$1,500,000	\$143,401,950
Tangibles			60,182,595
Public Service	2,877,112		10,738,558 (1970)

Local General Property Tax Rates Per \$100 of Assessed Valuation, 1971 ^{12/}

<u>Taxing Unit**</u>	<u>Paris</u>	<u>North Middletown</u>	<u>Bourbon County</u>
State	.015	\$.015	\$.015
County	.211	.211	.211
School	.750	.475	.475
City	.250	.250	
<u>Total</u>	\$1.226	\$.951	\$.701

*Property assessed at 100 percent of fair value.

**Manufacturing machinery, raw materials inventories and goods in process
 inventories are not subject to local tax. State rate is only \$.15 per \$100.

Planning and Zoning

Agency - Paris-Bourbon County Planning Commission
Plans completed - Commercial Area Study, Capital Improvements Budget
Plans in process - Comprehensive Plan (Revision), Subdivision Regulations (Paris only) (Revision), Zoning Ordinance (Paris only) (Revision)
Codes adopted - Building, Housing, Plumbing, Electric, Fire and Gas
Other programs - Workable Program for Community Improvement, Public Housing, Urban Renewal

Safety

<u>Police</u>	<u>Paris</u>	North <u>Middletown</u>	<u>Bourbon County</u>
Total staff	14 regular 7 special 8 adult school patrol guards 4 meter maids	1	4
Patrol cars	3 (radio-equipped)	1	1 (radio-equipped)
Other equipment	2 scooters for traffic and meters		

Fire

American Insurance Association Fire Rating	6	8	
Full-time staff	14		5
Volunteers	15	20(Isalaried)	14
Equipment:			
1,000 gpm pumper	1		
750 gpm pumpers	2		1
550 gpm pumper			1
500 gpm pumper		1	
1,000 gal. tankers		1	1
Other	3 boats and motors (on call), dragging equipment, first aid kits, mutual aid agreement with surrounding cities		

Sanitation

	<u>Paris</u>	<u>Middletown</u>	<u>Bourbon County</u>
Type service	municipal	private	private
Cost:			
residential	\$3 monthly	\$5 monthly	contract
business	varies on amount of volume	varies on amount of volume	contract
Collection frequency:			
residential	weekly	twice weekly	when desired
business	daily	twice weekly	when desired
Trash pickup	weekly		when desired
Disposal method	incinerator	land fill	incinerator

HEALTH

Hospitals

	<u>Location</u>	<u>Beds</u>
Bourbon County Hospital	Paris	76
State Tuberculosis Hospital, District 3	Paris	112
Bourbon County Hospital Facilities - 2 operating rooms, recovery room, X-ray, nursery, pharmacy, laboratory, physical therapy, inhalation therapy department, obstetrical section, emergency room		
Medical staff - 10 doctors, 21 registered nurses, 6 graduate licensed practical nurses		
State Tuberculosis Hospital, District 3 medical staff - 4 doctors, 8 registered nurses, 5 registered field nurses, 6 licensed practical nurses		
Other - Blue Grass West Mental Health Center		

Nursing Homes

	<u>Number</u>	<u>Beds</u>
Extended care homes	1	64
Personal care homes	4	66

Public Health

Facility - The Paris-Bourbon County Health Department
Staff - Health officer, 3 nurses, 1 home health aide, 2 clerks, 1 sanitarian,
1 nutritionist, 2 dentists
Budget 1971-72 - \$82,518



BOURBON HEIGHTS NURSING HOME

OTHER LOCAL FACILITIES

Communications

<u>Paris</u>	<u>North Middletown</u>
Telephone - South Central Bell Telephone Company Services - Standard (touch tone now available)	South Central Bell Telephone Company Standard
Telegraph - Western Union Services - phone	Nearest service in Paris
Postal - U. S. Post Office Class - First Mail received - 4 times daily Mail dispatched - 4 times daily	Third 2 times daily 2 times daily
Newspapers - Daily and circulation - The Daily Enterprise - 5,600 Weekly and circulation - Citizen Advertiser - 5,500 Other papers received from - Louisville and Lexington, Kentucky; Cincinnati, Ohio	Paris, Lexington, and Louisville, Kentucky; Cincinnati, Ohio
Radio - WPDE 1440 Stations received from - Lexington, Louisville, Cynthiana, and Winchester, Kentucky; Cincinnati, Ohio	Paris, Mt. Sterling, Lexington, Louisville, Cynthiana, Winchester, Kentucky; Cincinnati, Ohio
Television - Cable service Reception from - Lexington, Kentucky and Cincinnati, Ohio Kentucky Educational Television - Lexington transmitter, Channel 46	Lexington, Kentucky and Cincinnati, Ohio Lexington transmitter, Channel 46

Library Services

Public library - Paris-Bourbon County Public Library
Size collection - 19,536 volumes
Circulation, 1971 - 212,280
Services - Services for the blind, summer reading programs, audio-visual services and equipment, bridge lessons
North Middletown - Bookmobile service once a week

Religious Institutions

	<u>Paris</u>	<u>North Middletown</u>
Number of churches - Denominations -	16 Baptist, Catholic Christian, Church of God, Church of Christ, Episcopal, Latter Day Saints, Methodist, Nazarene, Primitive Baptist	5 Baptist, Christian, Methodist, Nazarene

Financial Institutions

<u>Paris</u> <u>Banks</u>	<u>Statement as of December 31, 1971</u>	
	<u>Assets</u>	<u>Deposits</u>
Bourbon Agriculture Bank and Trust Company	\$14,455,177.71	\$13,035,856.72
Peoples Deposit Bank and Trust Company	11,447,287.54	10,310,203.32
The National Bank and Trust Company of Paris	8,232,942.10	7,094,477.61
<u>North Middletown</u>		
North Middletown Deposit Bank	\$ 2,475,092.23	\$ 2,105,944.62
<u>Savings and Loan Associations</u>		
	<u>Assets</u>	<u>Shared Accounts</u>
Blue Grass Federal Savings and Loan Association	\$ 9,091,398.65	\$ 8,315,439.57

Hotels and Motels

Paris
Total number - 4
Units - 57

Clubs and Organizations

Paris

Business and Civic - Paris-Bourbon County Chamber of Commerce,
Jaycees, Kiwanis Club, Lions Club, Rotary Club, YMCA

Fraternal - Odd Fellows, Masons, American Legion, VFW

Women's - DAR, American Legion Auxiliary, Business and Professional Women's Club, Bourbon County Homemakers, PTA, Younger Woman's Club, VFW Auxiliary, Lioness, Civinettes, Garden Club, Hospital Auxiliary of Bourbon County

Youth - Boys Scouts, Girl Scouts, Cub Scouts, Brownies, 4-H, FFA, FHA, FBLA, Teen Square, Junior League, Small Fry Football

North Middletown

Business and Civic - North Middletown Development Corporation, Community Club, PTA

Women's - Homemakers

Youth - FFA, FHA, Boy Scouts, Girl Scouts, 4-H

RECREATION

Local

	<u>Paris</u>	<u>North Middletown</u>
Public Recreation Facilities		
Supervised program -	summer program	summer program
Parks -	2	
Playgrounds -	1	1
Swimming pool -	1	
Tennis courts -	4	2
Baseball diamonds -	2	1
Football field -	1	
Other -	YMCA, Health Club, Horse Show sauna massage, exercise room	

Private Recreation Facilities

Country club -	1	
Golf course -	1 (9-hole)	
Swimming pool -	1	
Movie theaters -	1 indoor, 1 drive-in	
Bowling lane -	1	
Other -	tennis court	billiards

Tourist Attractions

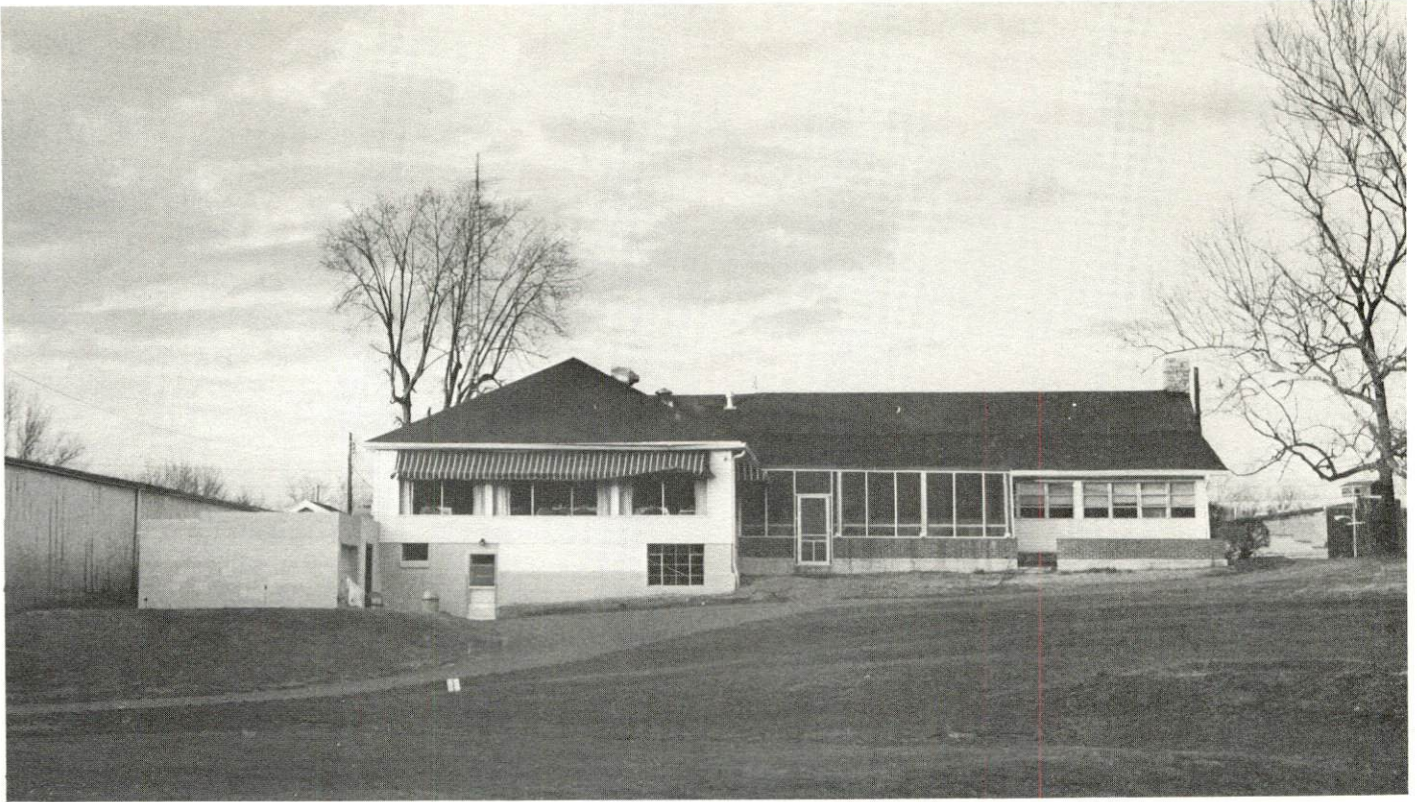
Duncan Tavern, Cane Ridge Shrine, horse farms,
1970 Kentucky Derby Winner, covered bridge, Lions
Club Dixieland Show, tobacco auctions

Area (Within 45 miles)

Fort Boonesboro State Park, Richmond, Kentucky
Blue Licks Battlefield State Park, Mt. Olivet, Kentucky
Frankfort, Capital of Kentucky
Lexington, Kentucky offers the full spectrum of entertainment



GARRARD PARK



CLUBHOUSE - STONER CREEK COUNTRY CLUB



GOLF COURSE

AGRICULTURE - NATURAL RESOURCES - CLIMATE

Agriculture 13/

	<u>Bourbon County</u>	<u>Labor Market Area</u>
Total land area (acres)	192,000	1,360,640
Percent of area in farm land	96.5	89.5
Number of farms	1,263	9,054
Average size of farms (acres)	150.1	134.5
1964 value of all farm products	\$13,360,640	\$76,247,697
Value per farm	10,839	8,421
Total crop sales	6,460,476	38,302,737
Total livestock & livestock products	6,920,550	37,900,430
1969 agricultural production included:		
Burley tobacco (lbs.)	11,990,000	70,016,000
Corn (bu.)	696,000	3,131,000
Cattle and calves (number)	50,000	287,100
Hogs and pigs (number)	31,700	88,700
Milk production, 1968 (lbs.)	12,160,000	94,500,000

Natural Resources

Principal mineral resources	Limestone
Other mineral resources	Clay, sand and gravel, vein minerals
Acres of commercial forest land	5,100
Most abundant tree species	White oak, red oak, black walnut, ash, hard maple

Climate 14/

	<u>Bourbon County</u>
Temperature	
Annual mean (30-year record)	55.6 degrees
Average annual 1970	54.5 degrees
Record highest July, 1966* (7-year record)	98.0 degrees
Record lowest January, 1966* (7-year record)	-10.0 degrees
Seasonal heating degree-days (30-year record)	4,683
Precipitation	
Mean annual total (30-year record)	44.73 inches
Mean annual snow and sleet (25-year record)	16.00 inches
Total precipitation 1969	39.50 inches
Mean number days precipitation (26-year record) (.01 inch or more)	129
Average number days thunderstorms (26-year record)	47
Prevailing winds (17-year record)	South

*Also on earlier dates, months or years.

HISTORY

Bourbon County is located in central Kentucky in the heart of the Bluegrass region. Hinkston Creek flows along its eastern border and Stoner Creek rises in the southwest and unites with the South Fork of Licking River in the northern area. The county's 300 square miles of territory has a gently rolling surface which is well-adapted to agriculture.

The first land surveys of the area were made by James Douglass and Colonel John Floyd in 1774 and 1775, with settlements following soon afterward. John Cooper settled on Hinkston Creek in 1775 and James Douglass settled in the area the next year. Thomas Kennedy settled at the mouth of Stoner Creek in 1776.

By 1785 there were enough settlers in the area for the Virginia Legislature to establish Bourbon County, the fifth of nine counties formed prior to Kentucky becoming a state. It was taken from Fayette County, and named in honor of the Bourbon family, the ruling family of France which aided the American effort for independence from Great Britain. The first court in the county was held in 1786 at the house of James Garrard, Kentucky's second Governor, and the only man ever elected to two successive terms. John Edwards, later a U. S. Senator, was also a member of the court, which issued an order to regulate tavern rates.

By 1790 corn whisky was made in large quantities here. It was for Bourbon County that Kentucky's famous Bourbon whisky, first produced in this part of Kentucky, was named. This industry grew rapidly, and by 1823 some forty distilleries were operating in the county.

Bourbon County played an important role in the religious history of the state. Following the Great Western Revival which began in Logan County, a movement called "The New Lights" was headed in Bourbon County by Barton W. Stone. Stone led his people into a merger with Alexander Campbell's Disciples of Christ, forming the Christian Church in 1832. The birthplace of the Christian Church is preserved in Bourbon County.

Paris, the county seat, was established as Hopewell in 1789 (because stagecoach drivers "hoped" they would reach it by nightfall), then called Bourbontown, and finally named Paris in 1790 for Paris, France. When the railroad first came to the county, the town became a commercial center of some importance. Paris had a population of 7,823 in 1970.

Bourbon County already had a population of 7,837 in 1790. Since 1810 the population has remained rather stable, with 17,752 in 1950, 18,178 in 1960, and 18,476 in 1970.

Agriculture provided 1,400 of the county's 6,500 jobs in 1970, with burley tobacco, corn, cattle, and hogs the principal products. Manufacturing employment increased over the past decade to 981 in 1970, with the greatest production in the apparel industry. Largest of the county's firms are Hansley, Inc., which makes men's slacks, Blue Grass Industries, making surgeons' gowns, and Industrial Products Division, Dura Corporation, producing hydraulic cooling pumps.

Among noted citizens in Bourbon County history was Cassius M. Clay, Jr., who was president of the convention which wrote Kentucky's present constitution. John Fox, Jr., the Kentucky novelist who wrote The Little Shepherd of Kingdom Come, was a native. Virgil Chapman lived there during terms in both houses of the U. S. Congress.

SOURCES OF INFORMATION

- 1/ U. S. Department of Commerce, Bureau of the Census, Census of Population, 1950, 1960, 1970.
- 2/ Kentucky Department of Economic Security, Division of Research and Statistics.
- 3/ Kentucky Department of Economic Security, Number of Workers in Manufacturing Industries Covered by Kentucky Unemployment Insurance Law Classified by Industry and County, September 1970 and 1960.
- 4/ Kentucky Department of Commerce, 1972 Kentucky Directory of Manufacturers.
- 5/ Kentucky Department of Economic Security, Division of Employment Services, Lexington Office.
- 6/ Kentucky Department of Economic Security, Kentucky Labor Supply Estimates by County, January 1971.
- 7/ Kentucky Department of Commerce, Future Labor Supply by 1978.
- 8/ University of Kentucky, Office of Development Services and Business Research, Total Personal Income for Kentucky.
- 9/ University of Kentucky, Office of Development Services and Business Research, Per Capita Income in Kentucky.
- 10/ Louisville & Nashville Railroad Company, Louisville, Kentucky.
- 11/ Ecklar-Moore Express, Inc., Lexington, Kentucky.
- 12/ Kentucky Department of Revenue, Kentucky Property Tax Rates, 1971.
- 13/ U. S. Department of Commerce, Bureau of the Census, Census of Agriculture, 1964. U. S. Department of Agriculture and Kentucky Department of Agriculture, Kentucky Agricultural Statistics, 1970.
- 14/ U. S. Department of Commerce, Environmental Science Services Administration, Climatological Data, 1970.

All other information was obtained from governmental offices, local businesses and organizations.