

1970

Industrial Resources: Boyle County - Danville

Kentucky Library Research Collections
Western Kentucky University, spcol@wku.edu

Follow this and additional works at: https://digitalcommons.wku.edu/boyle_cty

 Part of the [Business Administration, Management, and Operations Commons](#), [Growth and Development Commons](#), and the [Infrastructure Commons](#)

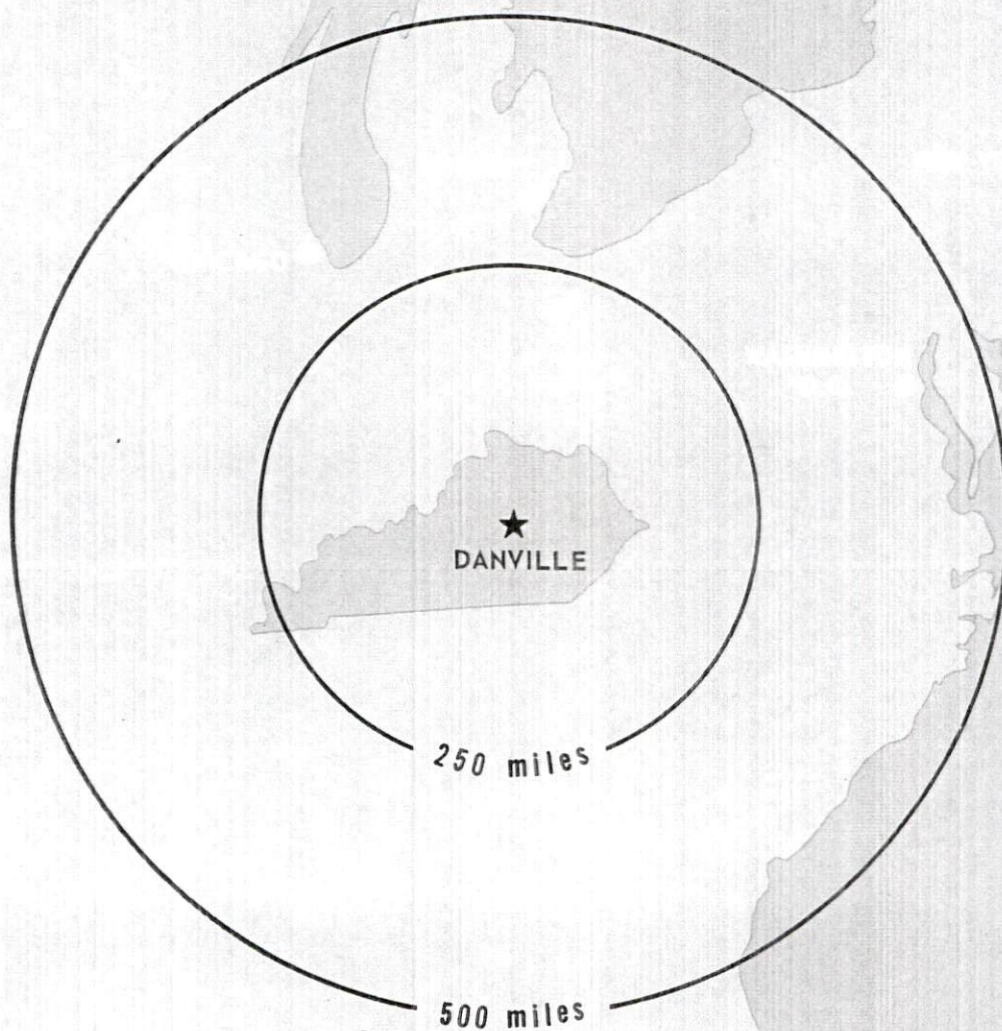
Recommended Citation

Kentucky Library Research Collections, "Industrial Resources: Boyle County - Danville" (1970). *Boyle County*. Paper 7.
https://digitalcommons.wku.edu/boyle_cty/7

This Report is brought to you for free and open access by TopSCHOLAR®. It has been accepted for inclusion in Boyle County by an authorized administrator of TopSCHOLAR®. For more information, please contact topscholar@wku.edu.

INDUSTRIAL RESOURCES

DANVILLE KENTUCKY



CURRENT INDUSTRIAL RESOURCES

CURRENT INDUSTRIAL RESOURCES, DANVILLE, KENTUCKY

This is a 1971 supplement to "Industrial Resources, Danville, Kentucky" which was published in 1970.

Population

	<u>1970</u>	<u>1960</u>
Danville	11,542	9,010
Boyle County	21,090	21,257
Labor Market Area	103,542	104,485

(Includes Boyle, Casey, Garrard, Lincoln, Marion, and Mercer Counties.)

General Employment Characteristics

<u>Industry</u>	<u>Employment 1969</u>	
	<u>Boyle County</u>	<u>Labor Market Area</u>
TOTAL	10,700	36,500
Agricultural	900	9,200
Nonagricultural	9,800	27,300
Manufacturing	3,100	8,000
Trade and Services	2,536	6,136
Government	1,650	4,243

Manufacturing Employment

<u>Type Industry</u>	<u>Boyle County</u>			<u>Labor Market Area</u>		
	<u>1970</u>	<u>1960</u>	<u>% Change</u>	<u>1970</u>	<u>1960</u>	<u>% Change</u>
TOTAL	2,831	1,743	62.4	7,907	4,496	75.9
Food & kindred products	107	151	- 29.0	405	454	- 10.8
Tobacco	6	19	- 68.0	100	30	233.3
Apparel, textiles, leather	1,079	835	29.0	3,227	2,481	30.1
Lumber & furniture	206	87	137.0	933	346	169.7
Printing, publishing, paper	620	94	56.0	663	135	391.1
Chemicals, petroleum, coal, rubber	4	4	--	99	4	2375.0
Stone, clay & glass	580	521	11.0	750	548	36.9
Machinery & metal products	229	26	78.0	993	190	424.7
Other	0	6	- 1.0	737	308	139.3

There are presently 24 manufacturing firms in Boyle County.
Major firms, employment, and year started operations:

<u>Firms</u>	<u>Employment</u>	<u>Year Started Operations</u>
American Greetings Corp.	700	1967
Corning Glass Works	500	1952
Genesco, Inc.	500	1946
Jackson of Danville	203	1946
Kentucky Textile Industries, Inc.	79	1967
Palm Beach Company	603	1937
Royal Industries	85	1969
Whirlpool Corp.	210	1969
Penn Ventilator Company, Inc.	117	1965

Labor Supply

	<u>Boyle County</u>			<u>Labor Market Area</u>		
	<u>Total</u>	<u>Male</u>	<u>Female</u>	<u>Total</u>	<u>Male</u>	<u>Female</u>
Current	803	503	300	8,035	5,008	3,027
Potential additions next five years	2,400	1,212	1,188	12,878	6,622	6,256

Personal Income

Boyle County, 1969: Total - \$67,610,000; Per Capita - \$3,030
1959: Total - \$34,033,000; Per Capita - \$1,555

Education

The Boyle County School System includes 1 high school with a comprehensive rating, and 5 elementary schools.

The Danville Independent School District includes 1 high school with a comprehensive rating, 1 junior high school, and 3 elementary schools.

The Kentucky School for the Deaf includes 1 high school with a basic rating, and 1 elementary school.

Nearest Vocational School: Garrard County Extension Center, 12 miles distant.
Courses offered: Auto Mechanics, Carpentry, Drafting, Electricity, Welding.

Power and Fuel

Electric Distributors

Kentucky Utilities Company
Inter-County RECC

Source of Supply

Kentucky Utilities Company
East Kentucky Power Cooperative

Natural Gas DistributorSpecific GravityBtu Per Cu. Ft.

Western Kentucky Gas Company

.60

1,018

Water and Sewerage

Water: Danville Water Works - Daily treatment capacity - 5,000,000 gallons; average daily use - 2,500,000 gallons; maximum daily use - 3,000,000 gallons; storage capacity - 3,150,000 gallons; size distribution lines - 6, 8, 10, and 12 inches

Lake Village Water Association - Source of supply - Danville Water Works; daily purchase capacity - 130,000 gallons; storage capacity - 50,000 gallons; size distribution lines - 3, 4, and 6 inches.

Sewerage: Type treatment - trickling filters, drying beds, chlorination; design capacity - 2,200,000 gallons per day; size of sewer mains - 8, 10, 12, and 15 inches.

Local Government

Business license - one percent of net profits (\$25 minimum)

Property Tax Rates

Property tax rates per \$100 of assessed valuation, 1970:

	<u>Danville</u>	<u>Boyle County</u>
State	\$.015	\$.015
County	.150	.150
School	.858	.621
City	.380	
Total	\$1.403	\$.786

Police Protection

Number of law enforcement officers - 24 (city); 4 (county).

Fire Protection: Number of full-time firemen - 16; number of volunteer firemen - 20; American Insurance Association fire rating, City of Danville, Class 6.

Industrial Sites

Sites shown on the 1970 Danville industrial site map remain available for industrial use.

DANVILLE INDUSTRIAL SITES

1970

DANVILLE INDUSTRIAL SITES

For more detailed information concerning the following sites, contact J. H. Bailey, Jr., Kentucky Utilities Company, Danville, Kentucky, or the Kentucky Department of Commerce, Frankfort, Kentucky.

SITE # 1: ACREAGE AND TOPOGRAPHY: 10 acres, level
 LOCATION: Boyle County Industrial Park, 1 mile southwest of Danville
 ZONING: Industrial
 HIGHWAY ACCESS: Kentucky Highway 34
 WATER: Danville Municipal
 SIZE LINE: 12-inch
 GAS: Western Kentucky Gas Company
 SIZE LINE: 4-inch
 ELECTRICITY: Kentucky Utilities Company - 69 kv source
 SEWERAGE: Danville Municipal
 OWNERSHIP: Danville Development Corporation

SITE # 2: ACREAGE AND TOPOGRAPHY: 12 acres, level
 LOCATION: Boyle County Industrial Park, 1 mile southwest of Danville
 ZONING: Industrial
 HIGHWAY ACCESS: Kentucky Highway 34 and bypass road
 WATER: Danville Municipal
 SIZE LINE: 12-inch
 GAS: Western Kentucky Gas Company
 SIZE LINE: 4-inch
 ELECTRICITY: Kentucky Utilities Company - 69 kv source
 SEWERAGE: Danville Municipal
 OWNERSHIP: Danville Development Corporation

SITE # 3: ACREAGE AND TOPOGRAPHY: 20 acres, gently rolling
 LOCATION: Kentucky Highway 34, 1 mile southwest of Danville
 ZONING: Industrial
 HIGHWAY ACCESS: Bypass; Kentucky Highway 34 within 400 feet of site
 RAILROADS: Served by Southern Railway spur
 WATER: Danville Municipal
 SIZE LINE: 12-inch
 GAS: Western Kentucky Gas Company
 SIZE LINE: 4-inch
 ELECTRICITY: Kentucky Utilities Company - 69 kv source
 SEWERAGE: Danville Municipal
 OWNERSHIP: Danville Development Corporation

SITE # 4: ACREAGE AND TOPOGRAPHY: 30 acres, gently rolling
 LOCATION: Boyle County Industrial Park, 1 mile southwest of Danville
 ZONING: Industrial
 HIGHWAY ACCESS: Paved access to bypass road
 RAILROADS: Served by Southern Railway spur
 WATER: Danville Municipal
 SIZE LINE: 12-inch
 GAS: Western Kentucky Gas Company
 SIZE LINE: 4-inch
 ELECTRICITY: Kentucky Utilities Company - 69 kv source
 SEWERAGE: Danville Municipal
 OWNERSHIP: Danville Development Corporation

SITE # 5: ACREAGE AND TOPOGRAPHY: 120 acres, level to gently rolling
 LOCATION: 1 mile southwest of Danville
 ZONING: Industrial
 HIGHWAY ACCESS: Kentucky Highway 34 and bypass road
 RAILROADS: Southern Railway System tracks within 1,000 feet of site
 WATER: Danville Municipal
 SIZE LINE: 12-inch
 GAS: Western Kentucky Gas Company
 SIZE LINE: 4-inch
 ELECTRICITY: Kentucky Utilities Company - 69 kv source
 SEWERAGE: 8-inch main of Danville Municipal System, 1,000 feet away
 OWNERSHIP: Danville Development Corporation

SITE # 6: ACREAGE AND TOPOGRAPHY: 76 acres, gently rolling
 LOCATION: Kentucky Highway 34
 ZONING: Industrial
 HIGHWAY ACCESS: Kentucky Highway 34
 RAILROADS: Southern Railway System spur on site
 WATER: Danville Municipal
 SIZE LINE: 12-inch
 GAS: Western Kentucky Gas Company
 SIZE MAIN: 4-inch
 ELECTRICITY: Kentucky Utilities Company
 SEWERAGE: Danville Municipal
 OWNERSHIP: Danville Development Corporation

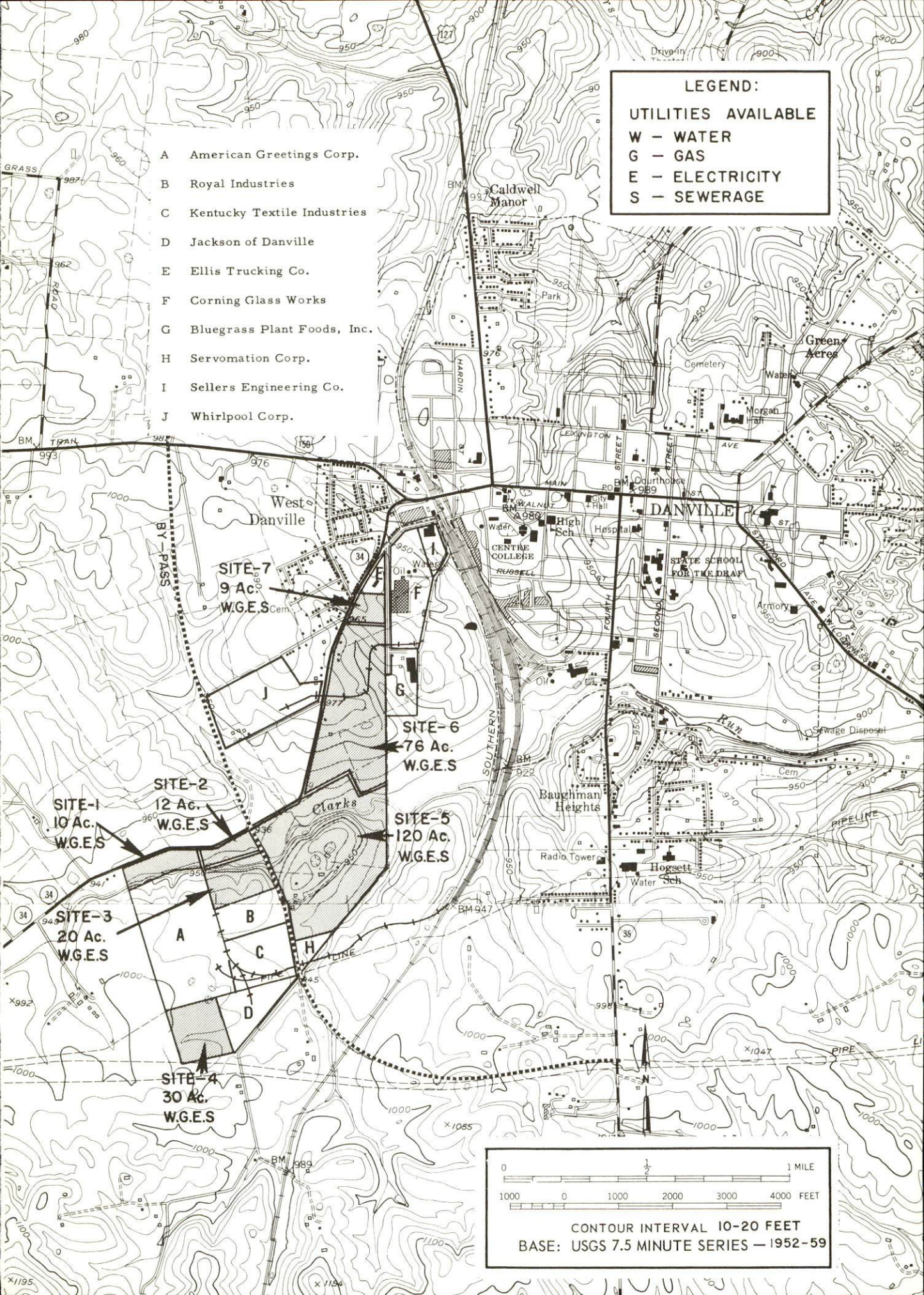
SITE # 7: ACREAGE AND TOPOGRAPHY: 9 acres, level to gently rolling
 LOCATION: Kentucky Highway 34
 ZONING: Industrial
 HIGHWAY ACCESS: Kentucky Highway 34
 RAILROADS: Southern Railway System spur within 500 feet of site
 WATER: Danville Municipal
 SIZE LINE: 12-inch
 GAS: Western Kentucky Gas Company
 SIZE MAIN: 4-inch
 ELECTRICITY: Kentucky Utilities Company
 SEWERAGE: Danville Municipal
 OWNERSHIP: Private

- A American Greetings Corp.
- B Royal Industries
- C Kentucky Textile Industries
- D Jackson of Danville
- E Ellis Trucking Co.
- F Corning Glass Works
- G Bluegrass Plant Foods, Inc.
- H Servomation Corp.
- I Sellers Engineering Co.
- J Whirlpool Corp.

LEGEND:

UTILITIES AVAILABLE

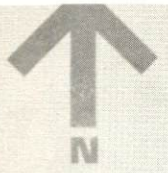
- W - WATER
- G - GAS
- E - ELECTRICITY
- S - SEWERAGE



0 1 1 MILE

1000 0 1000 2000 3000 4000 FEET

CONTOUR INTERVAL 10-20 FEET
 BASE: USGS 7.5 MINUTE SERIES — 1952-59



SELLERS ENGINEERING CO.

ELLIS TRUCKING CO.

CORNING GLASS WORKS

WHIRLPOOL CORP.

BLUEGRASS PLANT FOODS, INC.

ROYAL INDUSTRIES

AMERICAN GREETINGS CORP.

SERVOMATION CORP.

KENTUCKY TEXTILE INDUSTRIES

BOYLE COUNTY
Danville, Ke

INDUSTRIAL RESOURCES

DANVILLE, KENTUCKY

Prepared by

The Kentucky Department of Commerce

in cooperation with

The Danville-Boyle County Chamber of Commerce

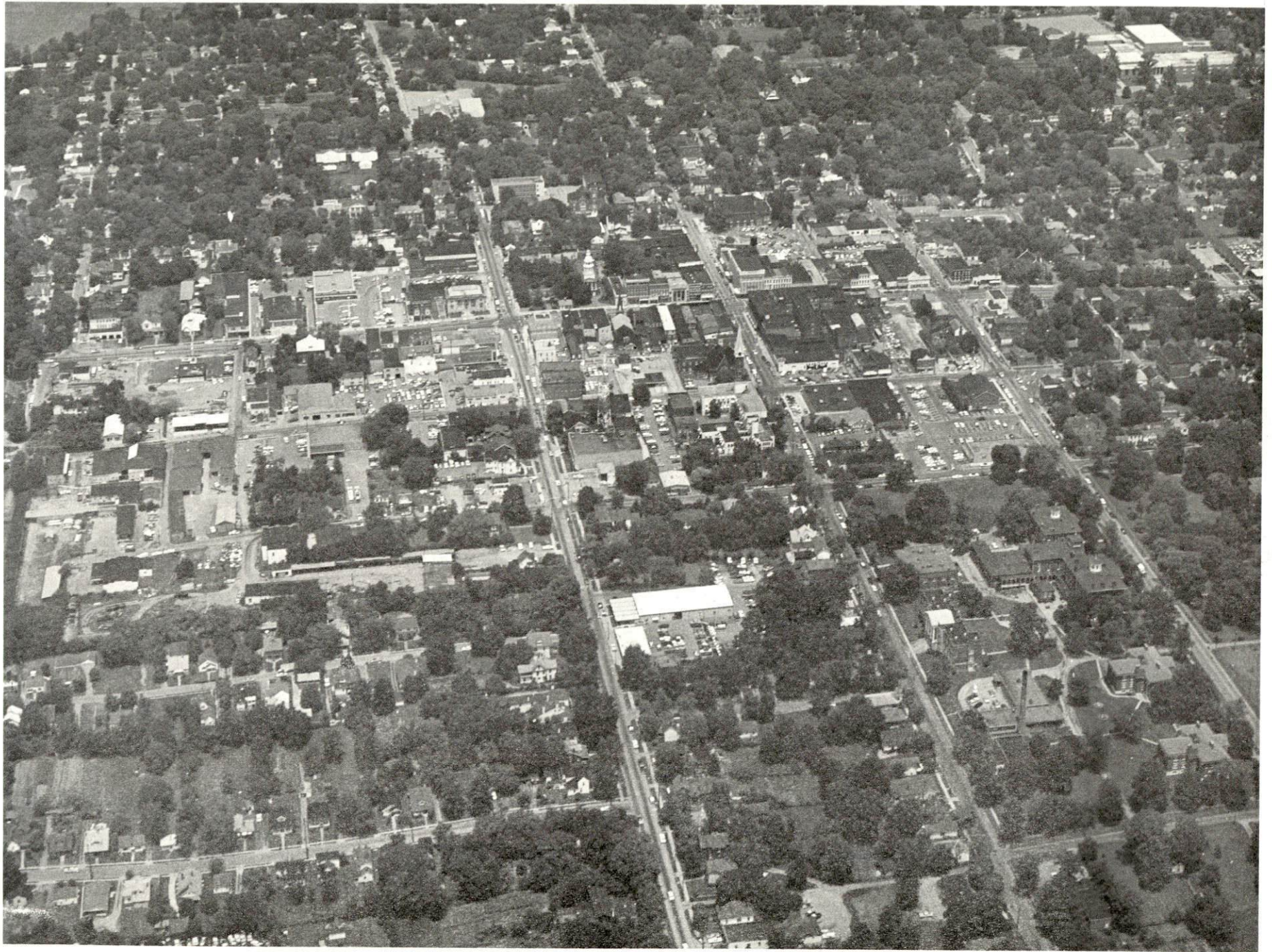
1970

This copy has been prepared by the Kentucky Department of Commerce ,
Division of Research and Planning, and the cost of printing paid from
state funds.

TABLE OF CONTENTS

<u>Chapter</u>	<u>Page</u>
INDUSTRIAL SITES	i
DANVILLE, KENTUCKY - A RESOURCE PROFILE	1
THE LABOR MARKET	5
Population Trends	5
General Employment Characteristics, 1969	5
Manufacturing Employment Trends by Industry	5
Danville Manufacturing Firms, Their Products and Employment	6
Wage Rates for Selected Occupations	9
Labor Organizations	9
Current and Future Labor Supply10
Total Personal Income10
Per Capita Personal Income10
EDUCATION11
Public Schools11
Parochial, Private and Special Schools11
Vocational Schools14
Colleges and Universities14
TRANSPORTATION15
Rail15
Truck Service15
Air16
Bus17
Taxi17
Rental Services17
POWER AND FUEL18
Electricity18
Natural Gas18
WATER AND SEWERAGE19
Water19
Sewerage20

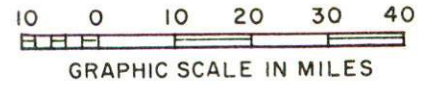
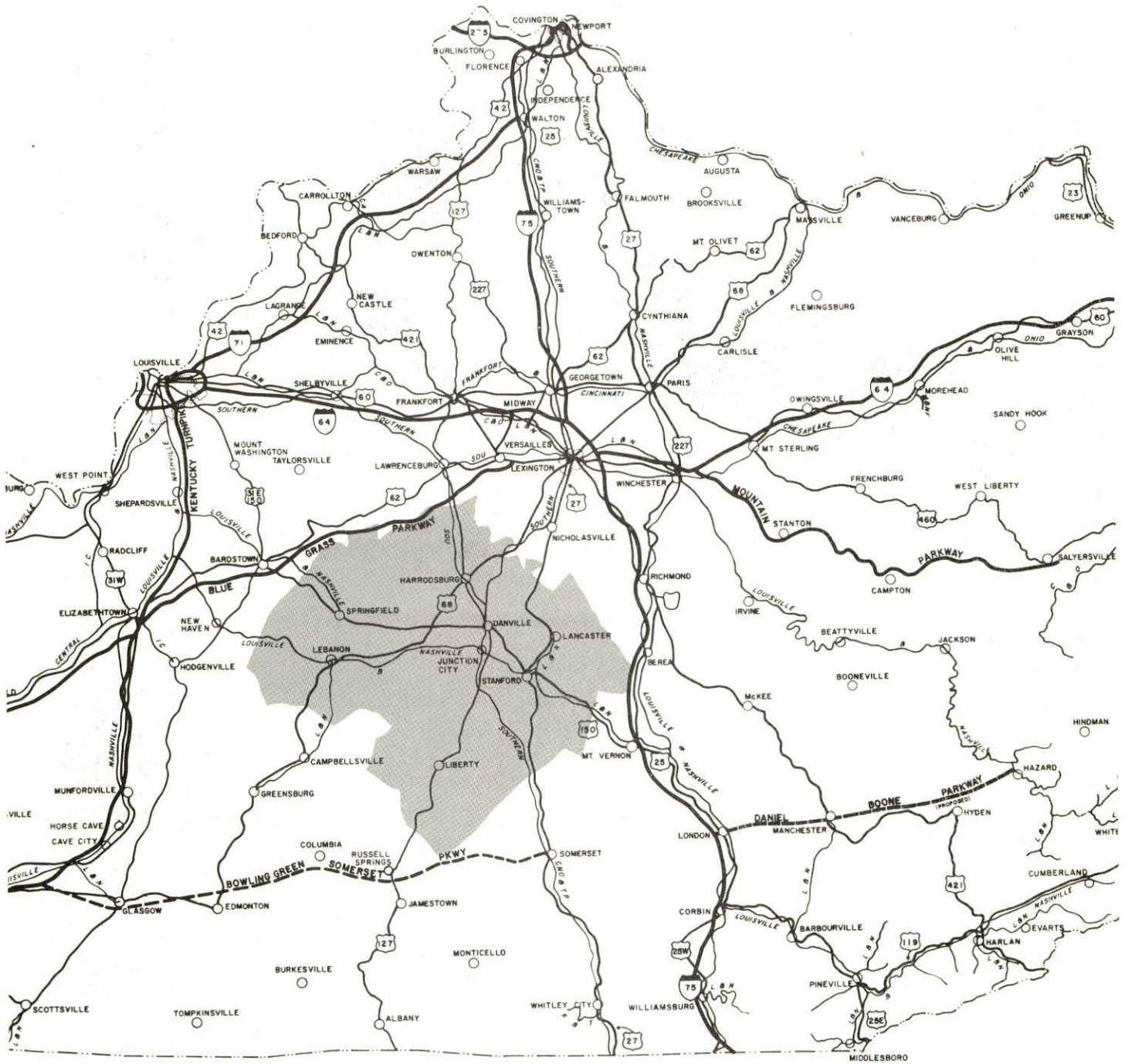
<u>Chapter</u>	<u>Page</u>
LOCAL GOVERNMENT	21
City	21
County	21
Assessed Value of Property, 1970	21
Local General Property Tax Rates Per \$100 of	
Assessed Valuation, 1970	21
Planning and Zoning	22
Safety	22
Police	22
Fire	22
Rescue Service	22
Sanitation	22
HEALTH	23
Hospitals.	23
Nursing Homes	23
Public Health.	23
Mental Health.	23
OTHER LOCAL FACILITIES	24
Communications	24
Library Services	24
Clubs and Organizations	24
Religious Institutions	25
Financial Institutions	25
Hotel and Motels	25
RECREATION	26
Local	26
Area	26
AGRICULTURE - NATURAL RESOURCES - CLIMATE.	28
Agriculture	28
Natural Resources	28
Climate	28
HISTORY	29



AERIAL VIEW - DANVILLE, KENTUCKY

DANVILLE LABOR MARKET AREA

*Shaded area denotes labor market area



DANVILLE, KENTUCKY - A RESOURCE PROFILE

Location

Danville, the county seat of Boyle County, is rich in history and tradition dating back to 1775. Called the "Cradle of the Commonwealth," Danville was the site of ten conventions which culminated in Kentucky's admission to the Union in 1792, and became the state's first Capitol for a brief period of time.

Today, with its population of almost 11,500, Danville is no typical small town. The designation of Danville as a 1968 All-American City is proof that the city is progressive and in tune with the times. The beauty of Danville's wide, tree-lined streets and stately rows of pillared mansions is combined with energetic and imaginative leadership to create growth in an environment of excellent livability. In 1968, Look Magazine called Danville a "little town with big time hustle." Danville's liberal endowment of leadership and an excellent geographical location are responsible for this uncommon, progressive character.

Danville is positioned in the central Bluegrass Region, 35 miles from Lexington and 70 miles from Louisville. Its central location in a centrally located state has made Danville an attractive prospect as a distributive center and manufacturing site for industry.

The Economic Framework

Total employment in Boyle County averaged 10,700 in 1969 with manufacturing providing 3,100 of these jobs. During the first nine years of the decade manufacturing employment increased by almost 1,600 jobs or 97 percent. Major industrial products are greeting cards, gift wrap, stationery, party paper, glass bulbs and tubing, ladies' shoes, upholstered furniture, and men's suits.

Per capita income in the county in 1968 was \$2,596 and ranked 21st among the state's 120 counties. In a word, the local economy is prosperous.

Danville is the hub of a labor market area that includes Boyle and the six adjoining counties. Area employment totals 36,500 jobs. Area industrial employment has almost doubled since 1959 with sharpest gains in these industries: apparel and leather; lumber and furniture; paper, printing and publishing; and machinery and metal products.

Herrington Lake, 4 miles from the city, is 36 miles long and dotted with private and commercial camps, offering a variety of water sports and recreation facilities. Pioneer Playhouse, the State Theater of Kentucky, brings summer stock theater to Danville during June, July and August. The city and environs is an historian's paradise featuring restored Constitution Square, The McDowell House and Apothecary Shop, many fine examples of early 19th century architecture, and Perryville Battlefield, 10 miles west, the site of Kentucky's bloodiest civil war battle. Nearby Harrodsburg features Fort Harrod, the state's first settlement, and the Legend of Daniel Boone, performed nightly during the summer months. Centre College offers various cultural events including the annual subscription Community Arts Series which consists of three concert programs, each of unique interest.

Lexington, 35 miles distant, offers the full spectrum of sophisticated entertainment, cultural and sporting events. The finest Thoroughbred and harness racing in the world is available at Keeneland Race Course and the Red Mile Trotting Track at several meets each year. The University of Kentucky provides nine months of sports excitement each year. The Central Kentucky Concert and Lecture Association presents an annual subscription series which brings to the city, world famous groups and individuals in the arts and sciences. There are also three symphony orchestras, theater groups which produce more than twenty plays each year, and scores of free concerts, lectures and art exhibitions at Transylvania University and the University of Kentucky.

THE LABOR MARKET

POPULATION TRENDS ^{1/}

Area	Population			Percent Change	
	1970	1960	1950	1960-70	1950-60
Danville	11,486	9,010	3,588	+ 27.5	+151.1
Labor Market Area	100,636	104,485	112,307	- 3.7	- 7.0
Boyle County	20,351	21,257	20,532	- 4.3	+ 3.5
Casey County	12,608	14,327	17,446	- 12.0	- 17.9
Garrard County	9,311	9,747	11,029	- 4.5	- 11.6
Lincoln County	16,053	16,503	18,668	- 2.7	- 11.6
Marion County	16,064	16,887	17,212	- 4.9	- 1.9
Mercer County	15,716	14,596	14,643	+ 7.7	- 0.3
Washington County	10,533	11,168	12,777	- 5.7	- 12.6

GENERAL EMPLOYMENT CHARACTERISTICS, 1969 ^{2/}

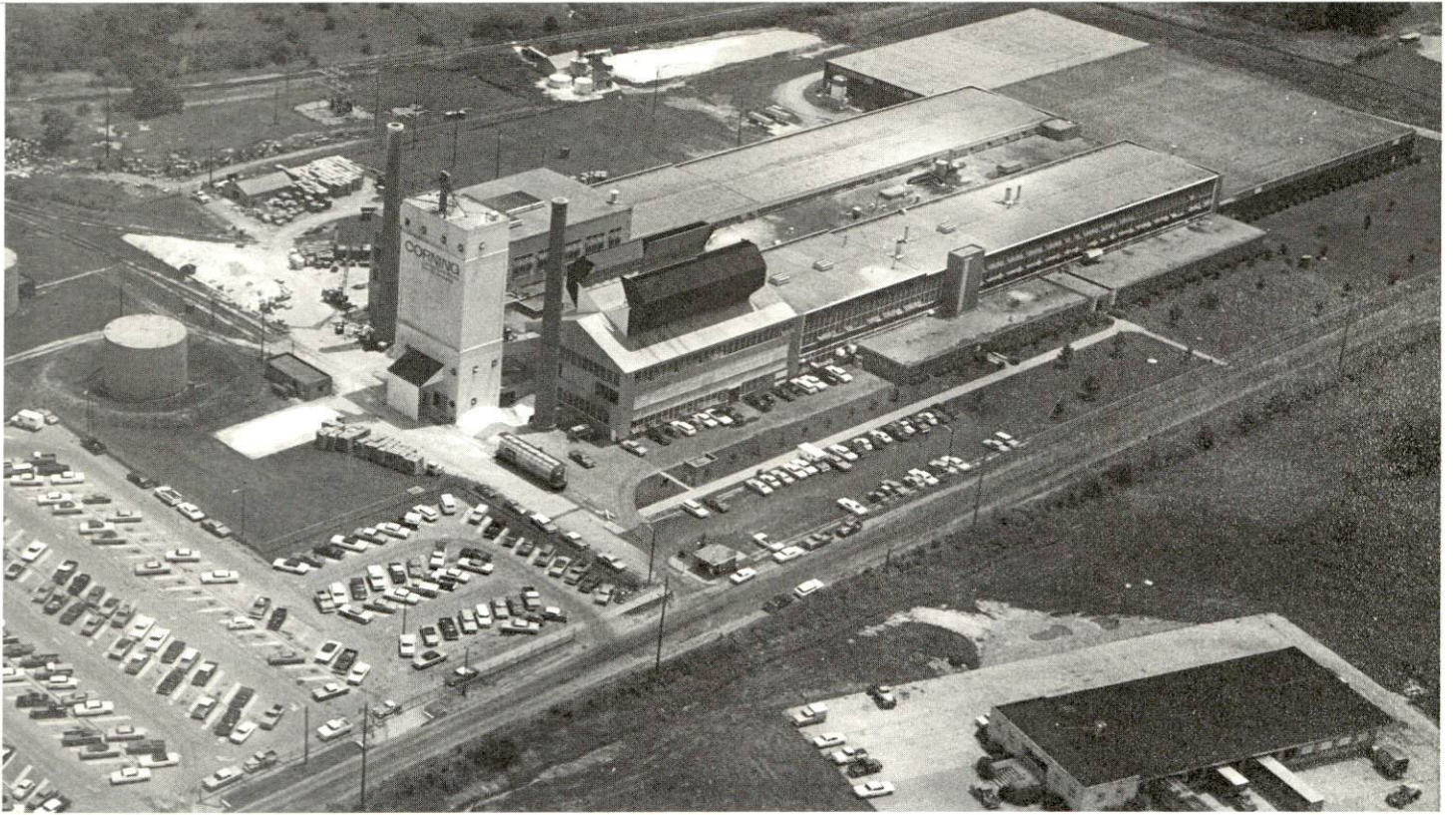
Major Employment Group	Employment	
	Boyle County	Labor Market Area
TOTAL	10,700	36,500
Agricultural	900	9,200
Nonagricultural	9,800	27,300
Manufacturing	3,100	8,000
Trade and Services	2,438	6,330
Government	1,650	4,050

MANUFACTURING EMPLOYMENT TRENDS BY INDUSTRY SEPTEMBER 1959 AND 1969 ^{3/}

Industry	Boyle County			Labor Market Area		
	1969	1959	% Change	1969	1959	% Change
TOTAL	3,119	1,584	+ 96.9	7,931	4,067	+ 95.0
Food & Kindred Products	145	144	+ 0.7	426	358	+ 18.9
Tobacco	5	19	- 73.7	60	30	+ 100.0
Apparel, Textiles, Leather	1,186	731	+ 62.2	3,285	2,331	+ 37.7
Lumber & Furniture	231	113	+ 104.4	896	374	+ 139.6
Printing, Publishing, Paper	667	101	+ 560.4	710	152	+ 367.1
Chemicals, Petroleum, Coal, Rubber	5	9	- 44.4	51	9	+ 466.7
Stone, Clay & Glass	631	428	+ 47.4	847	449	+ 88.6
Machinery & Metal Products	249	34	+ 632.4	905	50	+ 1710.0
Other	0	5		751	314	+ 139.8

DANVILLE MANUFACTURING FIRMS,
THEIR PRODUCTS AND EMPLOYMENT ^{4/}

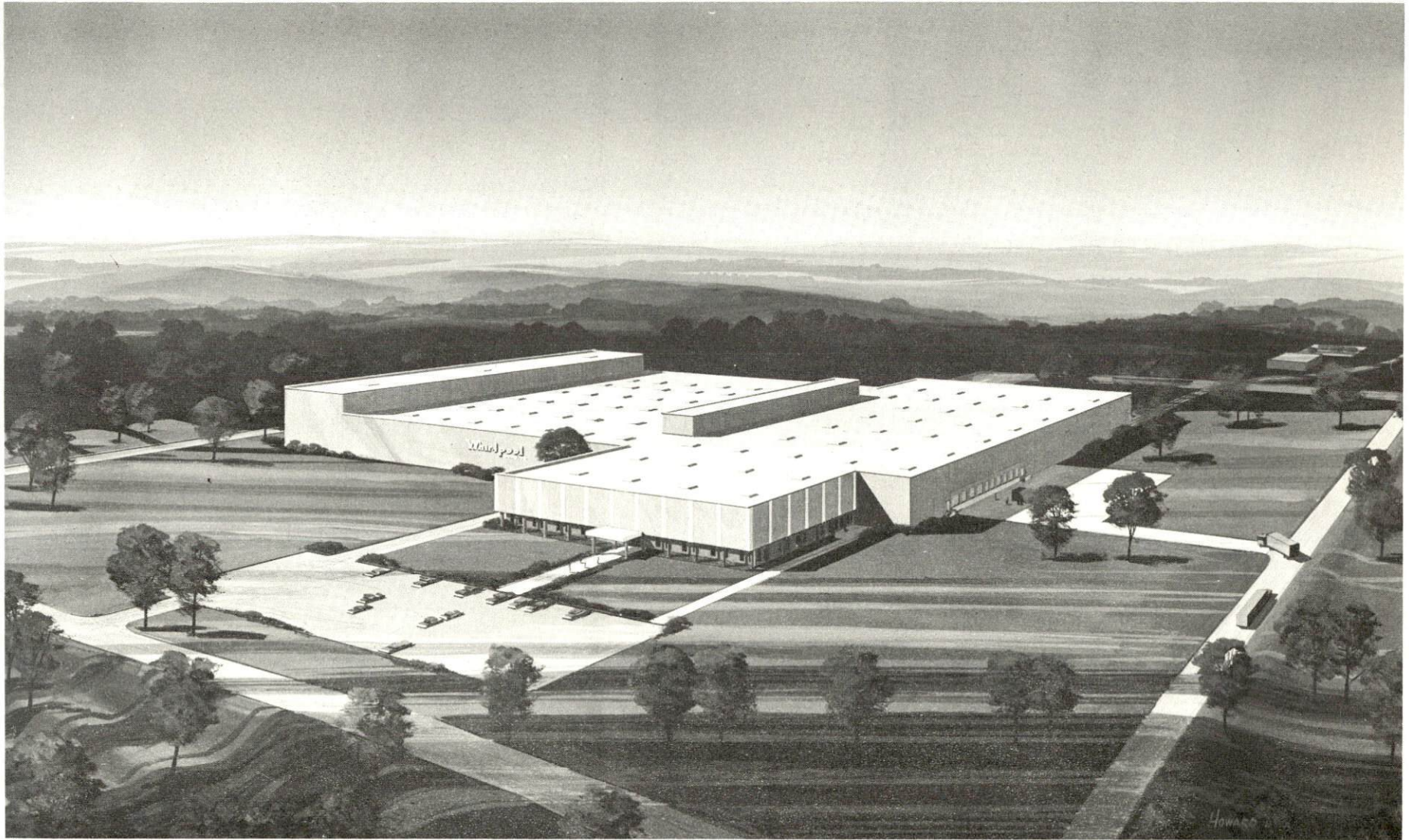
Firm	Product	Employment		
		Total	Male	Female
American Greetings Corp.	Greeting cards, gift wrap, stationery, party paper	700	175	525
Bluegrass Plant Foods, Inc.	Fertilizer	17	14	3
Bluegrass Printing Co.	Lithographic printing, letterpress printing	5	4	1
Boyle Block Co.	Concrete block	14	13	1
Fred Cain Farm Equipment Co., Inc.	Tractor accessories, field tillers	20	19	1
Caldwell Stone Co.	Agricultural lime	23	23	0
Coca-Cola Bottling Works	Carbonated beverages	19	19	0
Corning Glass Works	Glass bulbs, tubing	500	300	200
Crofton, Inc.	Foam rubber	7	5	2
Danville Advocate-Messenger	Newspaper, letterpress printing, offset printing	34	20	14
Danville Construction Co.	Asphalt paving	4	4	0
Dr. Pepper Bottling Co.	Carbonated beverages	10	10	0
Genesco, Inc.	Ladies' shoes	500	125	375
Jackson of Danville	Upholstered chairs, sofas	203	147	56
Kentucky Kandies	Candy, barbecue sauce, pancake syrup	6	1	5
Kentucky Textile Industries, Inc.	Plastic covered fabrics, auto felt trim, indoor-outdoor carpeting	79	55	24
Myers Concrete	Ready mixed concrete	6	5	1
Palm Beach Co.	Men's suits	603	25	578
Ready Mix Concrete Co.	Ready mixed concrete	17	16	1
Royal Crown Bottling Co.	Soft drinks	41	38	3
Royal Industries	Friction brake linings	85		
Sellers Engineering Co.	Boilers, commercial gas fired water heaters	35		
Whirlpool Corp.	Trash compactors	210	200	10



CORNING GLASS WORKS



PALM BEACH COMPANY



WHIRLPOOL CORPORATION

WAGE RATES FOR SELECTED OCCUPATIONS
DANVILLE, KENTUCKY 5/

Classification	Starting	Wages Per Hour	
		Maximum	Prevailing
<u>Production Employees</u>			
Assembler	\$1.80	\$2.10	\$1.90
Inspector	1.80	2.10	1.90
Production Laborer	1.80	2.10	1.90
Welder, Arc or Acetylene (Class-A)	1.90	2.25	2.00
<u>Service Employees</u>			
Electrician (Class-A)	\$2.50	\$3.00	\$2.75
Laborer	1.60	2.00	1.75
Machinist	2.50	3.00	2.75
Mechanic, Maintenance	2.50	3.00	2.75
Truck Driver, Industrial (Class-A)	1.85	2.15	1.95
<u>Office Employees</u>			
Bookkeeper	\$1.90	\$2.25	\$2.00
File Clerk	1.60	1.90	1.70
Receptionist	1.75	2.05	1.90
Secretary	1.90	2.25	2.00
Typist	1.75	2.05	1.90

LABOR ORGANIZATIONS

<u>Union</u>	<u>Representing workers at:</u>
American Flint Glass Workers Union of North America	Corning Glass Works
United Textile Workers of America	Kentucky Textile Industries, Inc.
Upholsterers International of North America	Jackson of Danville
Amalgamated Clothing Workers of America	Palm Beach Co.

CURRENT AND FUTURE LABOR SUPPLY
DANVILLE LABOR MARKET AREA

County	Current Labor Supply 1970 ^{6/}			Future Labor Supply by 1976 (Becoming 18 Years of Age) ^{7/}		
	Total	Male	Female	Total	Male	Female
Labor Market Area	7,250	4,507	2,743	10,979	5,582	5,397
Boyle	602	365	237	2,009	997	1,012
Casey	1,866	1,098	768	1,518	769	749
Garrard	506	396	110	896	465	431
Lincoln	1,886	1,246	640	1,746	924	822
Marion	750	490	260	2,191	1,092	1,099
Mercer	457	270	187	1,414	734	680
Washington	1,183	642	541	1,205	601	604

TOTAL PERSONAL INCOME ^{8/}

Area	1968	1959	% Change
Boyle County	\$ 59,467,000	\$ 34,033,000	+74.7
Labor Market Area	205,091,000	117,739,000	+74.2
Kentucky	8,516,000,000	4,655,000,000	+82.9

PER CAPITA PERSONAL INCOME ^{9/}

Area	1968	1959	% Change
Boyle County	\$2,596	\$1,555	+66.9
Labor Market Area	\$1,255 to 2,596	\$690 to 1,555	+66.9 to +81.9
Kentucky	2,645	1,552	+70.4

EDUCATION

Public Schools

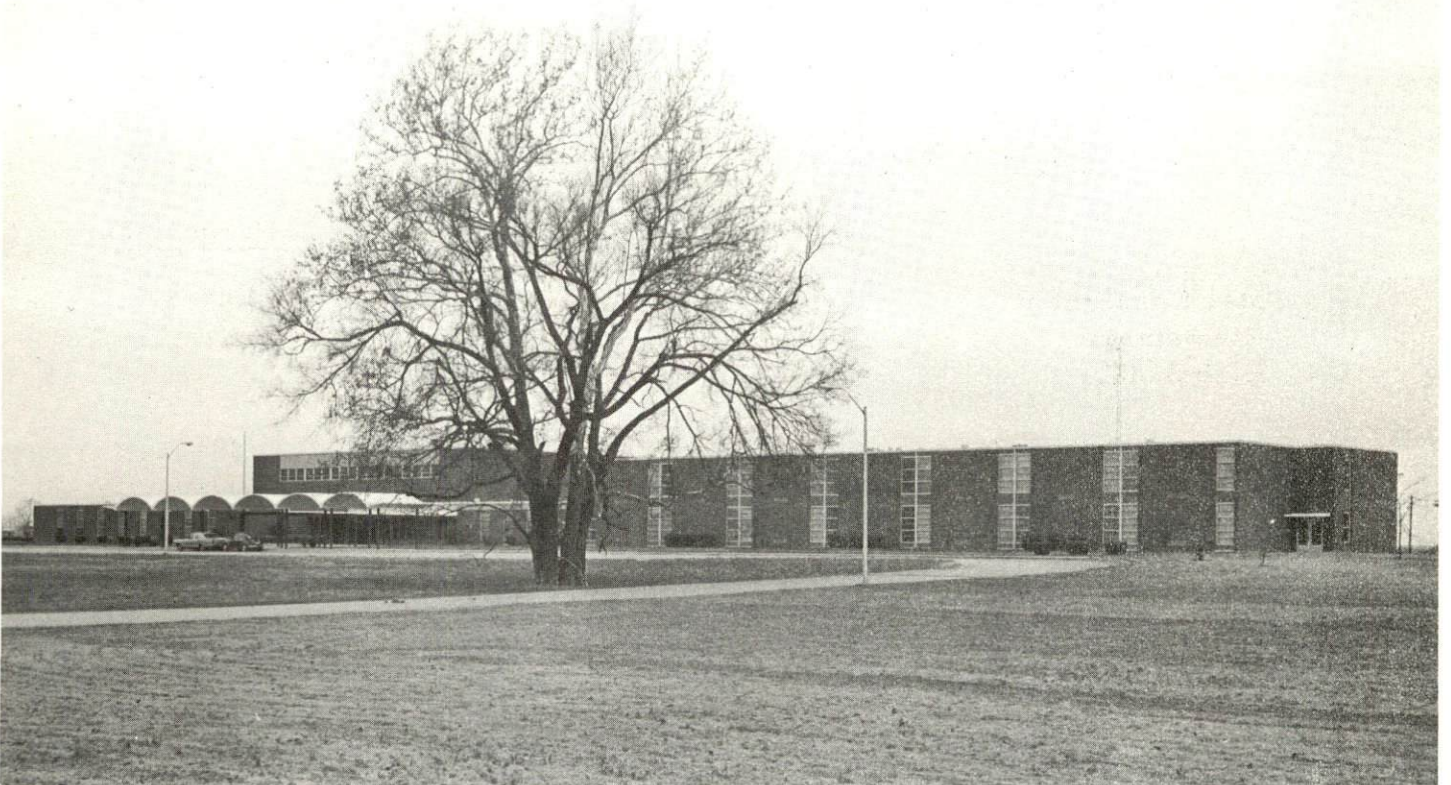
	<u>Danville</u>	<u>Boyle County</u>
Total Enrollment	2,433	2,287
Elementary	1,273	1,657
Junior High	431	
High School	729	630
Student-Teacher Ratio	24-1	22-1
Elementary	25-1	24-1
Junior High	29-1	
High School	20-1	18-1
State Rating of High School	Comprehensive	Comprehensive
Other Accreditations	Southern Association of Colleges and Schools	
Percent High School Graduates to College	70.7	41.9
Current Expenditures Per Pupil	\$459.62	\$424.61
Bonded Indebtedness, June 30, 1970	\$2,004,000	\$2,552,000

Parochial, Private and Special Schools

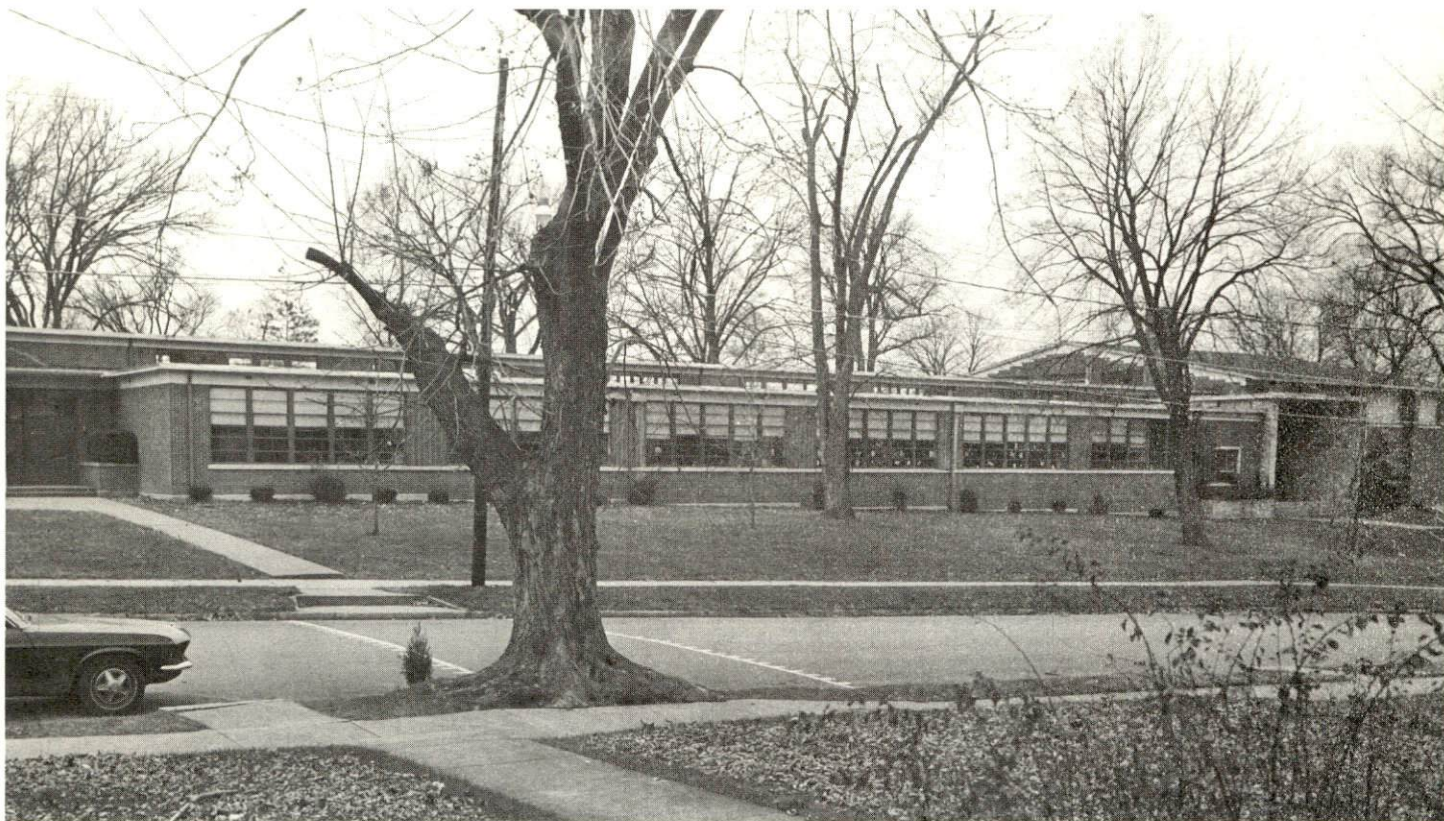
	<u>Special</u>	<u>Parochial</u>
Total Enrollment	552	83
Elementary	234	83
High School	318	
Student-Teacher Ratio	14-1	11-1
Elementary	9-1	11-1
High School	31-1	
State Rating of High School	Provisional	



DANVILLE HIGH SCHOOL



BOYLE COUNTY HIGH SCHOOL



JENNIE ROGERS SCHOOL



CENTRE COLLEGE DINING COMMONS

Vocational Schools

	<u>Nearest Area School</u>	<u>Nearest Extension Center</u>
Location	Lexington	Lancaster, Garrard County
Miles Distant	35	12
Curriculum	Data Processing General Clerical Secretarial-Steno Practical Nursing Distributive Education Electronics (Communication) Tool & Die Design Auto Body Repair Auto Mechanics Commercial Foods Drafting Electricity, Machine Shop Printing, Office Machine Repair Radio & TV Repair Sheet Metal, Welding	Appliance Repair Auto Mechanics Carpentry Welding Drafting

Colleges and Universities

<u>Name</u>	<u>Area - Within 50 Miles</u>		<u>Highest Degree Conferred</u>
	<u>Location</u>	<u>Enrollment</u>	
Centre College	Danville	749	Baccalaureate
Berea College	Berea	1,399	Baccalaureate
Eastern Kentucky University	Richmond	9,664	Masters
Asbury College	Wilmore	1,032	Baccalaureate
Campbellsville College	Campbellsville	882	Baccalaureate
University of Kentucky	Lexington	16,161	Ph. D. ; M. D. ; D. M. D. ; J. D.
Transylvania University	Lexington	878	Masters
Southeastern Christian College	Winchester	210	Associate
Georgetown College	Georgetown	1,445	Masters
Midway Junior College	Midway	212	Associate
Saint Catharine Academy	St. Catharine	156	Associate
Kentucky State College	Frankfort	1,620	Baccalaureate

TRANSPORTATION

Rail

Line serving - Southern Railway System

Services - Freight, switching, piggyback facilities, REA Express pickup and delivery

RAILWAY TRANSIT TIME FROM DANVILLE, KENTUCKY TO: 10/

City	No. of Days CL	City	No. of Days CL
Atlanta, Ga.	2	Los Angeles, Calif.	7
Birmingham, Ala.	2	Louisville, Ky.	1
Chicago, Ill.	3	Nashville, Tenn.	3
Cincinnati, Ohio	1	New Orleans, La.	3
Cleveland, Ohio	3	New York, N. Y.	5
Detroit, Mich.	3	Pittsburgh, Pa.	3
Knoxville, Tenn.	1	St. Louis, Mo.	2

Truck Service

Company

Home Office

Best Way Express, Inc.	Nashville, Tennessee
Cooper-Jarrett, Inc.	Orange, New Jersey
Davenport's Transfer	Harrodsburg, Kentucky
Distillery Transfer Service, Inc. (distillery products and supplies only)	Bardstown, Kentucky
Lawrenceburg Transfer Co.	Lawrenceburg, Kentucky
McDuffee Motor Freight, Inc.	Lebanon, Kentucky
McLean Trucking Co.	Winston-Salem, North Carolina
O.K. Trucking Co., Inc.	Cincinnati, Ohio
Smith's Transfer Corporation of Virginia	Staunton, Virginia
Turner Expediting Service	Louisville, Kentucky

HIGHWAY MILES AND TRUCK TRANSIT TIME IN DAYS FROM
DANVILLE, KENTUCKY, TO SELECTED MARKET CENTERS

City	Highway Miles	Delivery		City	Highway Miles	Delivery	
		Time LTL	TL			Time LTL	TL
Atlanta, Ga.	352	2	1	Los Angeles, Calif.	2,028	5	3
Birmingham, Ala.	415	2	1	Louisville, Ky.	80	1	1
Chicago, Ill.	409	3	1	Nashville, Tenn.	188	1	1
Cincinnati, Ohio	116	1	1	New Orleans, La.	789	3	2
Cleveland, Ohio	360	3	2	New York, N. Y.	775	5	3
Detroit, Mich.	381	2	1	Pittsburgh, Pa.	400	3	2
Knoxville, Tenn.	158	2	1	St. Louis, Mo.	343	3	2

Air

	<u>Local</u>	<u>Nearest Commercial</u>
Location:	Goodall Field Danville	Blue Grass Field Lexington
Runways:	2 paved	3 paved
Length:	2,400 feet; 3,400 feet	6,500 feet; 3,500 feet
Traffic Control:	Wind sock	Tower, guards, approach control, ground control, ILS system
Lighting:	Sundown to sunrise	Approach lighting system, beacon, runways and obstruction lighted
Services:	80-100 octane, hangar, tie down, flight instruction, charter, aerial crop spraying	80-100 and 145 octane; jet fuel; major A&E repairs; storage; restaurant; Weather Bureau; flight instruction; charter service; taxi; U-Drive-It service; Eastern, Delta, Piedmont, Allegheny, Airlines; Buckeye Airlines (freight)

Bus

Southern Greyhound, Trailways Bus Lines

Taxi

Yellow Cab Company, Bluegrass Cab Company,
Diamond Cab Company - 24-hour , radio-dispatched
service

Rental Services

Car, trailer and truck

POWER AND FUEL

Electricity

Company serving Danville - Kentucky Utilities Company
Source of power - Kentucky Utilities Company
Total generating capacity - 773,000 KW (1,200,000 KW by May, 1971)
Industrial rates negotiated by - Kentucky Utilities Company

Company serving Boyle County - Inter-County RECC
Source of power - East Kentucky Power Cooperative
Total generating capacity - 515,000 KW
Industrial rates negotiated by - Inter-County RECC, Danville, Kentucky

Natural Gas

Company serving - Western Kentucky Gas Company
Source of supply - Tennessee Gas Transmission Company
Size of transmission lines - 4 and 6 inches
Distribution lines - 2 to 8 inches
BTU content - 1,018
Specific gravity - .60
Distribution pressure - 4 oz. to 30 psi
Rates - Provided by Western Kentucky Gas Company, Danville Office

WATER AND SEWERAGE

Water

Company serving - Danville Water Works
 Source - Herrington Lake
 Treatment plant capacity - 5,000,000 gpd
 Average daily consumption - 2,500,000 gallons
 Peak daily consumption - 3,000,000 gallons
 Type treatment - Flocculation, sedimentation, filtration, chlorination
 Storage capacity - 3,150,000 gallons
 Average pressure - 70 psi
 Average temperature - 50°F.
 Size mains - 6, 8, 10, 12 inches

MONTHLY WATER RATES FOR WHOLESALE AND INDUSTRIAL CONSUMERS

First	20,000 cu. ft.	\$.30 per 100 cu. ft.	
			(Minimum monthly bill \$60)
Next	80,000 cu. ft.	.20 per 100 cu. ft.	
Next	100,000 cu. ft.	.18 per 100 cu. ft.	
Next	300,000 cu. ft.	.16 per 100 cu. ft.	
Next	500,000 cu. ft.	.14 per 100 cu. ft.	
All over	1,000,000 cu. ft.	.12 per 100 cu. ft.	

Name of water district - Lake Village Water Association
 Source of supply of treated water - Danville Water Works
 Amount of water which can be purchased in a 24-hour period - 130,000 gallons
 Average amount of water used in a 24-hour period - estimated 3,500 gallons per month per customer
 Number of customers served - 485
 Storage capacity - 50,000 gallons
 Average pressure - 30-35 psi
 Size mains - 6, 4, 3 inches

Rates:

First	1,000 gallons	\$6.00 (Minimum)	
Next	2,000 gallons	2.25 per 1,000 gallons	
Next	1,500 gallons	1.75 per 1,000 gallons	
Next	1,500 gallons	1.25 per 1,000 gallons	
All over	6,000 gallons	1.00 per 1,000 gallons	

Surface water sources - Dix River
Average discharge - 430 cfs (USGS)
Expected ground water yield - Entire county 5 gpm or less, except
center and extreme eastern portion where yield is 5 to 50 gpm
Yield along main streams - 5 to 50 gpm

Sewerage

Company serving - Danville Water Works
Design capacity - 2.2 million gpd
Average daily flow - 1.8 million gallons
Treatment - Primary and secondary
Type treatment - Trickling filters, drying beds, chlorination
Treated effluent discharged into - Clark's Run
Size of sanitary mains - 8, 10, 12 and 15 inches
Size of storm mains - 15 to 36 inches
Rates - 40 percent of monthly water bill

LOCAL GOVERNMENT

City

Structure - Mayor - 4-year term; 4 commissioners - 2-year terms;
 City Manager
 Budget 1970-71 - General Fund \$670, 227; Water and Sewer Fund \$450, 000
 Fees and licenses - Vehicle license - \$10 per annum; business net
 profits tax - one percent of net profits (\$25 minimum); payroll tax - one
 percent of gross wages

County

Structure - County judge - 4-year term; 6 magistrates - 4-year terms
 Budget 1969-70 - General Fund \$138, 744; Road Fund \$128, 251

Assessed Value of Property, 1970

<u>Classes of Property*</u>	<u>Danville</u>	<u>Boyle County</u>
Real Estate	\$46, 964, 662	\$98, 654, 550 (1969 figure)
Tangibles	3, 139, 786	27, 419, 208 (1969 figure)
Public Service	NA	24, 304, 447

Local General Property Tax Rates Per \$100 of Assessed Valuation, 1970 ^{12/}

<u>Taxing Unit**</u>	<u>Danville</u>	<u>Boyle County</u>
State	\$.015	\$.015
County	.150	.150
School	.858	.621
City	.380	
Total	\$ 1.403	\$.786

*Property assessed at 100 percent of fair value.

**Manufacturing machinery, raw materials inventories and goods in
 process inventories are not subject to local tax. State rate is only
 \$0.15 per \$100.

Planning and Zoning

Agency - Danville-Boyle County Planning Commission
Plans completed - Comprehensive Plan, Zoning Ordinance and
Subdivision Regulations, Base Studies
Plans in process - None
Codes adopted - National Building Code
Other programs - Urban Renewal

Safety

<u>Police</u>	<u>Danville</u>	<u>Boyle County</u>
Total staff	22	4
Radio-patrol cars	4	3
Other equipment	Standard	Standard

Fire

American Insurance Association Fire Rating	6	
Full-time staff	20	
Volunteers	20	80 (approx.)
Equipment:		
1,000-gpm pumpers	3	
750-gpm pumpers	1	5
ladder truck	1	
utility truck	1	
1,600-gallon tanker		1
1,000-gallon tankers		2

Rescue Service

Danville-Boyle County Rescue Squad:
Number of volunteers - 20
Equipment - 2 radio-dispatched trucks
Personnel training - Standard and advanced first aid

Sanitation

	<u>Danville</u>	<u>Boyle County</u>
Type service	municipal	private
Cost		
residential	none	\$4.00 a month
business	none	based on volume or frequency of pickup
Collection frequency		
residential	twice weekly	once a month
business	daily	by contract
Trash pickup	monthly	
Disposal method	land fill	land fill

HEALTH

Hospitals

	<u>Number</u>	<u>Beds</u>
General Hospital	1	114
Psychiatric Hospital	1 (state operated)	848

General hospital facilities - 3 operating rooms, recovery room, emergency room, X-ray and pathology equipment, laboratory, 4-bed intensive care unit

Medical staff - 20 doctors, 26 registered nurses, 54 graduate licensed practical nurses, 34 licensed practical nurses, urologist, anaesthetist

Nursing Homes

	<u>Number</u>	<u>Beds</u>
Extended care homes	1	50
Personal care homes	1	60

Public Health

Facility - Boyle County Health Center
Staff - Doctor (part-time), nurse, sanitarian, clerk
Budget 1970-71 - \$32,579

Mental Health

Facility - Comprehensive Care Center
Staff - Psychiatrist, two psychologists (one part-time), five social workers, one registered nurse, one licensed practical nurse

OTHER LOCAL FACILITIES

Communications

Telephone - South Central Bell Telephone Company
Services - All standard services, touch tone

Telegraph - Western Union
Services - Telephone

Postal - U. S. Post Office
Class - 1
Mail received - 4 times daily
Mail dispatched - 2 times daily

Newspapers - Danville Advocate-Messenger
Daily and circulation - 6,700
Other papers received from - Major cities

Radio - WHIR-AM WMGE-FM
Stations received from - Louisville and Lexington, Kentucky;
Cincinnati, Ohio

Television -
Cable service
Reception from - Louisville and Lexington, Kentucky
Kentucky Educational Television - Lexington transmitter - channel 8

Library Services

Public Libraries - Danville Public Library
Size collection - 24,182 volumes
Circulation, 1969-70 - 35,102

Private Libraries - Grace Doherty Library, Centre College
Size collection - 90,000 volumes
Special collections - Kentucky history

Clubs and Organizations

Business and Civic - Kiwanis, Chamber of Commerce, Rotary, Optimist,
Lions, Jaycees, Newcomers, Boyle County Medical Society, Danville
Historical Society, Danville Ministerial Association

Fraternal - Knights of Pythias, Masons, IOOF, American Legion, Rebekah Lodge

Women's - DAR, Women's Club, B & PW Club, Beta Sigma Phi, Danville Garden Club, Danville Junior Women's Club, Little Garden Club, AAUW, McDowell Hospital Women's Auxiliary, United Church Women, Eastern Star

Youth - Boy Scouts, Girl Scouts, Little League, FFA, FHA, 4-H

Other - Fish and Game Club

Religious Institutions

Number of churches - 29

Denominations - Baptist, Christian, Church of Christ, Church of God, Church of Jesus Christ of Latter Day Saints, Episcopal, Jehovah's Witnesses, Lutheran, Methodist, Nazarene, Presbyterian, Roman Catholic, Salvation Army

Financial Institutions

Statement as of June 30, 1970

<u>Banks</u>	<u>Assets</u>	<u>Deposits</u>
Bank of Danville	\$ 8,420,209.82	\$ 7,613,572.25
Farmers National Bank	13,455,196.29	12,142,850.55
Citizens National Bank	10,297,440.76	9,097,246.81
<u>Savings and Loan Associations</u>	<u>Assets</u>	<u>Shared Accounts</u>
Central Kentucky Federal Savings & Loan Association	\$ 8,488,191.47	\$ 7,691,245.98
Commonwealth First Federal Savings & Loan Association	9,984,116.55	9,256,405.16

Hotels and Motels

<u>Number</u>	<u>Units</u>
4	129

RECREATION

Local

Public Recreation Facilities

Supervised program - Danville-Boyle County Recreation Department

Parks - 2

Playgrounds - 8

Swimming pools - 3

Golf course - 1

Tennis courts - 2

Baseball diamonds - 4

Football fields - 4

Private Recreation Facilities

Country clubs - 2

Golf courses - 2

Swimming pools - 7

Movie theaters - 2

Bowling lanes - 1

Sports field - 1

Tourist Attractions

Constitution Square State Shrine, Old Crow Inn

McDowell Home & Apothecary Shop, Centre College

Wilderness Road Village-of-the-Arts

Cultural Events

Pioneer Playhouse

Community Arts Series

Area (Within 25 Miles)

Old Fort Harrod State Park, Perryville Battlefield State Shrine,
William Whitley House State Shrine, Isaac Shelby State Shrine,
Shakertown, Herrington Lake, Kentucky River, Legend of Daniel
Boone (Harrodsburg)



DANVILLE COUNTRY CLUB

AGRICULTURE - NATURAL RESOURCES - CLIMATE

Agriculture 13/

	<u>Boyle County</u>	<u>Labor Market Area</u>
Total land area (acres)	117,120	1,344,000
Percent of area in farm land	89.9	87.0
Number of farms	899	10,085
Average size of farms (acres)	117.2	115.9
1964 value of all farm products	\$5,095,621	\$47,521,034
Value per farm	5,668	4,712
Total crop sales	2,752,700	25,183,807
Total livestock & livestock products	2,326,566	22,302,153
1968 agricultural production included:		
Burley tobacco (lbs.)	4,390,000	39,696,000
Corn (bu.)	351,000	3,593,000
Cattle and calves (number)	25,000	258,700
Hogs and pigs (number)	5,700	70,100
Milk production (1967) (lbs.)	16,560,000	263,450,000

Natural Resources

Principal mineral resources	Limestone
Other mineral resources	Local vein minerals
Acres of commercial forest land	20,100
Most abundant tree species	White oaks, hickories, red oaks, ash, maple, red cedar, black walnut

Climate 14/

	<u>Boyle County</u>
Temperature	
Annual mean (30-year record)	55.6 degrees
Average annual - 1969	54.6 degrees
Record highest, July, 1966 (6-year record)	98.0 degrees
Record lowest, January, 1966 (6-year record)	-10.0 degrees
Seasonal heating degree-days (30-year record)	4,683
Precipitation	
Mean annual total (30-year record)	44.73 inches
Mean annual snow and sleet (25-year record)	16 inches
Total precipitation, 1969	39.50 inches
Mean No. days precipitation (25-year record) (.01 inches or more)	128
Average No. days thunderstorms (25-year record)	47
Prevailing winds (17-year record)	South

HISTORY

The Boyle County area was known from the earliest colonization in Kentucky, although it was not designated a county until 1842 after thirty years of seeking county status. Boyle County, the ninety-fourth Kentucky county formed, was named for John Boyle, an early settler who was a member of the U. S. Congress for three terms and Chief Justice of Kentucky for sixteen years.

Danville, the county seat, founded in 1775, became the place where much of the history of Kentucky and the westward movement was born and grew. The "Cradle of the Commonwealth of Kentucky," Danville was the center of efforts to make Kentucky County, Virginia, a separate state. Ten conventions were necessary before Kentucky attained statehood in 1792. They were held over a period of eight years in a building that stood on present-day Constitution Square. The state's first constitution was drafted at Danville, and the city became Kentucky's first capitol for a brief period of time.

Danville is aptly named the "City of Firsts" because:

- *The first post office west of the Allegheny Mountains was established in Danville in 1792.
- *Dr. Ephraim McDowell performed the world's first successful abdominal operation, an ovariectomy, in 1869.
- *The Kentucky School for the Deaf, established in Danville in 1823, was the first school of its kind in the world to be operated at government expense.
- *Transylvania University and Centre College were founded at Danville. Transylvania, the first institution of higher learning west of the Allegheny Mountains, was chartered in 1780, established in 1783 and later moved to its present site in Lexington. Centre was chartered by the Kentucky Legislature in 1819 and has become one of the town's points of pride for it boasts of many distinguished alumni, including two former U. S. Vice Presidents - Richard M. Johnson and John C. Breckinridge - and a former Chief Justice of the Supreme Court - Fred M. Vinson.

SOURCES OF INFORMATION

- 1/ U. S. Department of Commerce, Bureau of the Census, Census of Population, 1950, 1960, 1970 (Preliminary figures).
- 2/ Kentucky Department of Economic Security, Division of Research and Statistics.
- 3/ Kentucky Department of Economic Security, Number of Workers in Manufacturing Industries Covered by Kentucky Unemployment Insurance Law Classified by Industry and County, September 1959 and 1969.
- 4/ Kentucky Department of Commerce, 1970 Kentucky Directory of Manufacturers.
- 5/ Kentucky Department of Economic Security, Division of Employment Services, Danville Office.
- 6/ Kentucky Department of Economic Security, Kentucky Labor Supply Estimates by County, January 1970.
- 7/ Kentucky Department of Commerce, Future Labor Supply by 1976.
- 8/ University of Kentucky, Office of Development Services and Business Research, Total Personal Income for Kentucky.
- 9/ University of Kentucky, Office of Development Services and Business Research, Per Capita Income in Kentucky.
- 10/ Southern Railway System.
- 11/ McDuffee Motor Freight, Inc.
- 12/ Kentucky Department of Revenue.
- 13/ U. S. Department of Commerce, Bureau of the Census, Census of Agriculture, 1964. U. S. Department of Agriculture and Kentucky Department of Agriculture, Kentucky Agricultural Statistics, 1969.
- 14/ U. S. Department of Commerce, Environmental Science Services Administration, Climatological Data, 1969.

All other information was obtained from governmental offices, local businesses and organizations.