

1976

# Industrial Resources: Bracken County - Augusta and Brooksville

Kentucky Library Research Collections  
Western Kentucky University, [spcol@wku.edu](mailto:spcol@wku.edu)

Follow this and additional works at: [https://digitalcommons.wku.edu/bracken\\_cty](https://digitalcommons.wku.edu/bracken_cty)

 Part of the [Business Administration, Management, and Operations Commons](#), [Growth and Development Commons](#), and the [Infrastructure Commons](#)

---

## Recommended Citation

Kentucky Library Research Collections, "Industrial Resources: Bracken County - Augusta and Brooksville" (1976). *Bracken County*. Paper 9.  
[https://digitalcommons.wku.edu/bracken\\_cty/9](https://digitalcommons.wku.edu/bracken_cty/9)

This Report is brought to you for free and open access by TopSCHOLAR®. It has been accepted for inclusion in Bracken County by an authorized administrator of TopSCHOLAR®. For more information, please contact [topscholar@wku.edu](mailto:topscholar@wku.edu).

1976

# INDUSTRIAL RESOURCES

## **AUGUSTA & BROOKSVILLE KENTUCKY**



BRACKEN COUNTY, KENTUCKY



# BROOKSVILLE, KENTUCKY --- Site No. 176 -- 38 Acres

For more information contact Mr. William Wallin, Post Office Box 5, Brooksville, Kentucky 41004, or the Kentucky Department of Commerce, Capital Plaza Tower, Frankfort, Kentucky 40601.



LOCATION: Adjacent to eastern city limits  
ZONING: None  
HIGHWAY ACCESS: KY 10 adjacent to southern boundary of site  
RAILROAD: Not rail served  
WATER: Brooksville Utility System  
Size Line: 8-inch line along western boundary  
GAS: Natural gas service not available  
ELECTRICITY: Kentucky Utilities Company  
SEWERAGE: Brooksville Utility System  
Size Line: 8-inch line across KY 10 from southern boundary of site  
OWNERSHIP: Private

SCALE: 1 inch = 1200 feet  
CONTOUR INTERVAL: 20 feet  
BASE: USGS 7.5 minute series - 1952

UTILITIES  
..... Water Line  
--- Sewer Line



INDUSTRIAL RESOURCES  
AUGUSTA AND BROOKSVILLE, KENTUCKY

Prepared by  
The Kentucky Department of Commerce  
in cooperation with  
The Cities of Augusta and Brooksville

1976



This copy has been prepared by the Kentucky Department of Commerce, Division of Research and Planning, and the cost of printing paid from state funds.

Production Supervisor  
Patsy Wallace

Research  
Robert Shipley

Clerical  
Mildred Keefer

Graphics  
N. C. Montague  
Frank Ferrante  
Tony Cecconi

Cartography  
Site Development Section

## TABLE OF CONTENTS

<u>Chapter</u>	<u>Page</u>
INDUSTRIAL SITES . . . . .	i
AUGUSTA AND BROOKSVILLE, KENTUCKY - A RESOURCE PROFILE. . . . .	1
THE LABOR MARKET AREA . . . . .	3
Population . . . . .	3
General Employment Characteristics, 1974 . . . . .	3
Manufacturing Employment by Industry . . . . .	4
Augusta and Brooksville Manufacturing Firms, Their Products and Employment. . . . .	4
Labor Organizations. . . . .	5
Estimated Male Labor Supply. . . . .	5
Estimated Female Labor Supply . . . . .	5
Wages . . . . .	6
Per Capita Personal Income . . . . .	7
TRANSPORTATION . . . . .	8
Rail . . . . .	8
Highways. . . . .	8
Truck Service . . . . .	8
Air . . . . .	9
Bus . . . . .	9
Water . . . . .	9
POWER AND FUEL . . . . .	10
Electricity . . . . .	10
Natural Gas . . . . .	11
Other Fuels . . . . .	12
WATER AND SEWERAGE. . . . .	13
Water . . . . .	13
Sewerage. . . . .	15
CLIMATE. . . . .	16

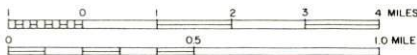
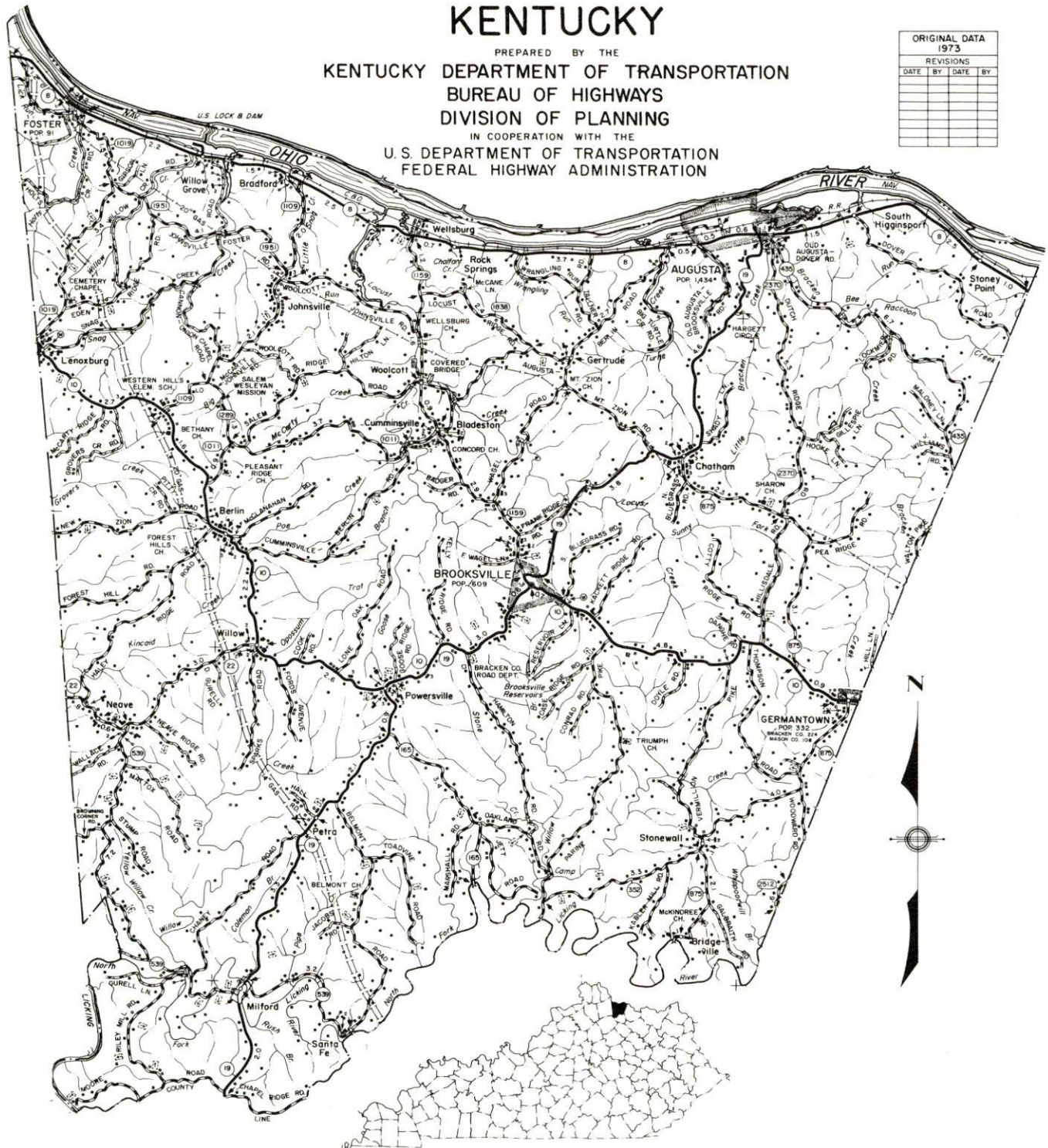


<u>Chapter</u>	<u>Page</u>
LOCAL GOVERNMENT . . . . .	17
City. . . . .	17
County. . . . .	17
Assessed Value of Property, 1975 . . . . .	17
Property Taxes . . . . .	18
Local Property Tax Rate Per \$100 of Assessed Valuation, 1975 . . . . .	18
Planning and Zoning . . . . .	18
Safety. . . . .	19
Police . . . . .	19
Fire . . . . .	19
Rescue Service . . . . .	19
Solid Waste . . . . .	19
EDUCATION . . . . .	20
Public Schools . . . . .	20
Nonpublic Schools . . . . .	20
Area Colleges and Universities. . . . .	21
Vocational Schools . . . . .	22
HEALTH. . . . .	23
Local Medical Personnel . . . . .	23
Hospitals . . . . .	23
Other Medical Facilities . . . . .	23
Ambulance Service . . . . .	23
Nursing Homes. . . . .	24
Public Health . . . . .	24
OTHER LOCAL FACILITIES . . . . .	25
Communications . . . . .	25
Library Services. . . . .	26
Religious Institutions . . . . .	26
Financial Institutions . . . . .	26
Hotels and Motels. . . . .	26
Clubs and Organizations. . . . .	27
RECREATION . . . . .	28
COMMUNITY IMPROVEMENTS. . . . .	30
HISTORY. . . . .	32

# GENERAL HIGHWAY MAP BRACKEN COUNTY KENTUCKY

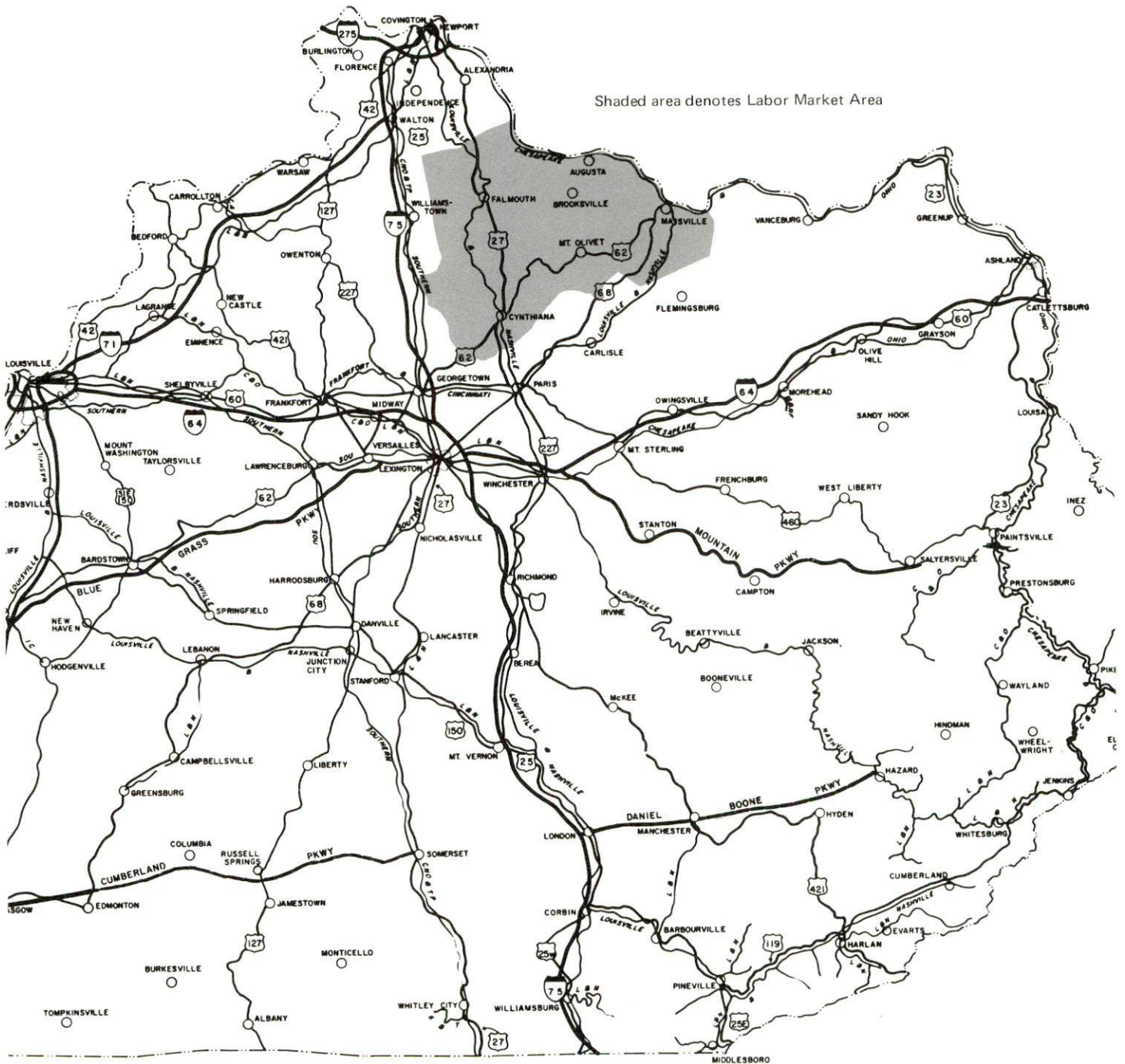
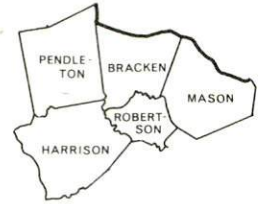
PREPARED BY THE  
KENTUCKY DEPARTMENT OF TRANSPORTATION  
BUREAU OF HIGHWAYS  
DIVISION OF PLANNING  
IN COOPERATION WITH THE  
U.S. DEPARTMENT OF TRANSPORTATION  
FEDERAL HIGHWAY ADMINISTRATION

ORIGINAL DATA 1973			
REVISIONS			
DATE	BY	DATE	BY

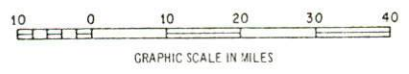




# AUGUSTA & BROOKSVILLE LABOR MARKET AREA



Shaded area denotes Labor Market Area



## AUGUSTA AND BROOKSVILLE, KENTUCKY - A RESOURCE PROFILE

Augusta, the largest city in Bracken County, had an estimated population of 1,430 in 1973. Brooksville, the county seat, had 632 inhabitants in the same year. Augusta is situated on the south bank of the Ohio River; Brooksville, 9 miles south of Augusta, lies amidst rolling countryside, Augusta is 70 miles southeast of Cincinnati, Ohio, and 129 miles northeast of Louisville, Kentucky.

Bracken County is located in the northeastern part of the Bluegrass physiographic region of Kentucky. The Ohio River forms the entire northern boundary of the county. The county, which covers an area of 204 square miles, had an estimated 1974 population of 7,600.

### The Economic Framework

The total number of Bracken County residents employed in 1974 averaged 2,370, including 810 in agriculture and 240 in government. Manufacturing employers in the county reported 390 workers; trade and services firms employed 200. Major industrial products are polyethylene, vinyl film, metal stampings, metal fasteners, and furniture glides.

Total unemployment in Bracken County averaged 2.7 percent of the labor force in 1974.

Per capita personal income in the county in 1973 was \$3,241, an increase of 26.4 percent since 1969.

The Augusta and Brooksville labor market area includes Bracken and the four adjoining counties. The total number of residents of the labor market area employed in 1974 averaged 22,200, including 4,110 in agriculture and 2,430 in government. Manufacturing employers in the labor market area reported 5,660 workers; trade and services firms employed 4,060.

### Resources for Growth

1. Labor Supply - There is a current labor supply of 1,180 men and 2,460 women available for industrial jobs in the labor market area. In addition, 2,580 young men and 2,450 young women in the area will become 18 years of age before 1981 and potentially available for work.

2. Transportation - Augusta is located on a main line of the Chessie System. Piggyback facilities are available at Cincinnati, Ohio, 70 miles northwest of Augusta. Kentucky highways 8, 19, and 435 provide access



to Augusta while Brooksville is located at the junction of Kentucky highways 19, 10, and 1159. Two trucking companies serve Augusta and one serves Brooksville. Augusta, by virtue of its location on the Ohio River, possesses water transportation capabilities. None, however, have been developed at present. There is no local air service. Commercial air service is available at the Greater Cincinnati Airport near Covington, Kentucky, some 65 miles northwest of Augusta and 57 miles northwest of Brooksville.

3. Utilities and Fuel - The Kentucky Utilities Company provides electric power to Augusta, Brooksville, and parts of Bracken County. The county also obtains electric power from the Fleming-Mason Rural Electric Cooperative Corporation and the Harrison RECC. Natural gas is distributed to Augusta by the City of Augusta Natural Gas Distribution System, whose source of supply is the Columbia Gas Transmission Corporation. The Brooksville Utility System distributes natural gas to Brooksville, its source of supply is also the Columbia Gas Transmission Corporation. Augusta and Brooksville are served by two propane and butane distributors. One distributor of distillate fuel oil serves Augusta, and two distributors serve Brooksville.

4. Education - Bracken County has two public school systems; The Bracken County School System and the Augusta Independent School District. One nonpublic school, St. Augustine Elementary School, is located in Augusta. Bracken County is located within 70 miles of five universities, seven senior colleges, two junior colleges, one technical institute and one community college. The Northern Kentucky State Vocational-Technical School in Covington, 67 miles northwest of Augusta and 59 miles northwest of Brooksville, offers training in 20 areas. The Maysville Area Vocational Education Center, 20 miles east of the two cities, offers seven areas of study.

THE LABOR MARKET AREA

POPULATION

<u>Area</u>	<u>1974*</u>	<u>1970</u>	<u>Percent Nonwhite</u>
			<u>1970</u>
Augusta	1,430**	1,434	2.0
Brooksville	632**	609	
Labor Market			
Area	52,100	50,770	
Bracken County	7,600	7,227	1.0
Harrison County	14,700	14,158	3.7
Mason County	16,900	17,273	9.3
Pendleton County	10,700	9,949	0.7
Robertson County	2,200	2,163	0.6

\*Provisional Estimates.

\*\*1973 Population Estimates.

Sources: U. S. Department of Commerce, Bureau of the Census, Census of Population, 1970. U. S. Bureau of the Census, Current Population Reports, Series P-25, No. 562, June 1975; Series P-26, No. 120, June 1975.

GENERAL EMPLOYMENT CHARACTERISTICS, 1974

<u>Major Employment Group</u>	<u>Employment by Place of Residence of Workers</u>	
	<u>Bracken County</u>	<u>Labor Market Area</u>
Total Employment	2,367	22,197
Agriculture	809	4,107
Government	239	2,432
	<u>Employment by Location of Jobs</u>	
	<u>Bracken County</u>	<u>Labor Market Area</u>
Manufacturing	388	5,664
Trade and Services	201	4,064

Source: Kentucky Department for Human Resources, Bureau for Administration and Operations.



MANUFACTURING EMPLOYMENT BY INDUSTRY  
SEPTEMBER, 1974

<u>Industry</u>	<u>Bracken County</u>	<u>Labor Market Area</u>
TOTAL	385	5,112
Food & Kindred Products	24	315
Tobacco	0	64
Apparel, Textiles, Leather	0	1,314
Lumber, Furniture	0	0
Printing & Publishing, Paper	9	75
Chemicals, Petroleum & Coal, Rubber	272	297
Stone, Clay & Glass	14	48
Primary Metals	0	578
Machinery, Metal Products, Equipment	66	1,975
Other	0	446

Source: Kentucky Department for Human Resources, Number of Workers in Manufacturing Industries Covered by Kentucky Unemployment Insurance Law Classified by Industry and County, September, 1974.

AUGUSTA AND BROOKSVILLE MANUFACTURING FIRMS,  
THEIR PRODUCTS AND EMPLOYMENT

<u>Firm</u> (Establishment date)	<u>Product</u>	<u>Employment</u>		
		<u>Total</u>	<u>Male</u>	<u>Female</u>
<u>Augusta</u>				
Clopay Corporation (1956)	Polyethylene, vinyl film	238	228	10
F. A. Neider Company (1883)	Metal stampings, metal fasteners, furniture glides	68	35	33
<u>Brooksville</u>				
The Bracken County News (1930)	Newspaper, job printing	5	1	4
Todds Farm Supply (1907)	Feed	5	4	1
Wood Lumber Company (1972)	Dog houses, utility sheds	3	3	0

Source: Kentucky Department of Commerce, 1976 Kentucky Directory of Manufacturers.

## LABOR ORGANIZATIONS

There are no labor unions representing manufacturing workers in Augusta or Brooksville.

### ESTIMATED MALE LABOR SUPPLY AUGUSTA AND BROOKSVILLE LABOR MARKET AREA

<u>Area</u>	<u>Current</u>			<u>Under- employed</u>	<u>Future</u>
	<u>Total</u>	<u>Not in Labor Force</u>	<u>Unemployed</u>		<u>Reaching 18 yrs. of age before 1981</u>
Labor Market					
Area	1,180	20	370	790	2,581
Bracken	140	0	40	100	344
Harrison	310	0	120	190	706
Mason	430	0	130	300	865
Pendleton	230	0	60	170	585
Robertson	70	20	20	30	81

Sources: Kentucky Department for Human Resources, Kentucky Labor Supply Estimates by County, 1975. Kentucky Department of Commerce, Future Labor Supply before 1981.

### ESTIMATED FEMALE LABOR SUPPLY AUGUSTA AND BROOKSVILLE LABOR MARKET AREA

<u>Area</u>	<u>Current</u>			<u>Under- employed</u>	<u>Future</u>
	<u>Total</u>	<u>Not in Labor Force</u>	<u>Unemployed</u>		<u>Reaching 18 yrs. of age before 1981</u>
Labor Market					
Area	2,460	1,260	250	950	2,447
Bracken	710	550	30	130	381
Harrison	340	0	50	290	646
Mason	650	230	110	310	853
Pendleton	540	330	50	160	477
Robertson	220	150	10	60	90

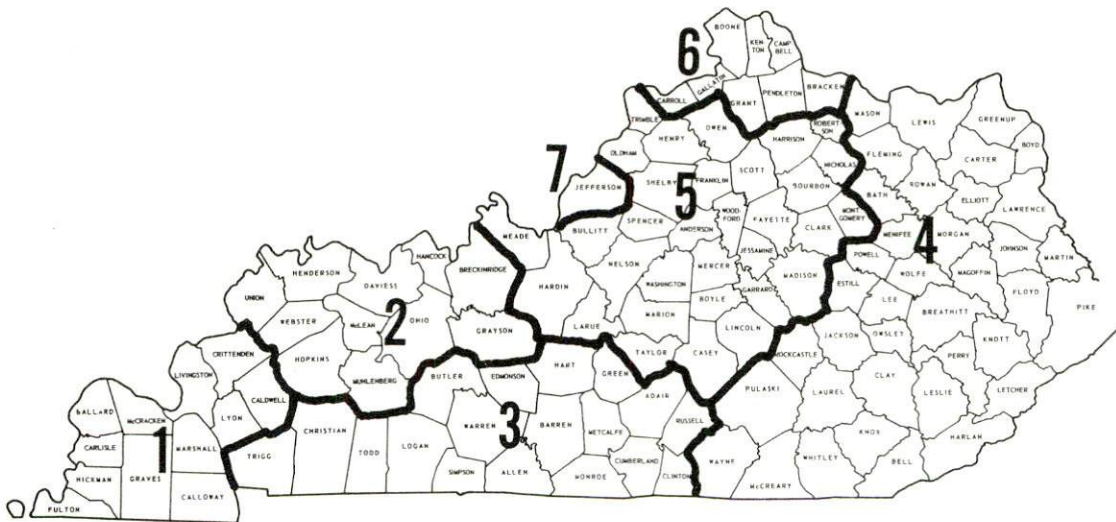
Sources: Kentucky Department for Human Resources, Kentucky Labor Supply Estimates by County, 1975. Kentucky Department of Commerce, Future Labor Supply before 1981.



## WAGES

Occupational wage rates for specific industries are usually not available to most government agencies, and wage data furnished to state employment agencies by individual industrial employers is protected from disclosure by federal law. The most reliable up-to-date wage information can be obtained by direct contact with local employers.

Associated Industries of Kentucky, a voluntary organization of Kentucky businesses, regularly collects occupational wage rates and fringe benefits data from participating member firms. Data is compiled for over 127 clearly defined office, production, and service occupations. Tabulations are published for seven regions of Kentucky, as shown on the map below. It should be noted that the data may be weighted by the preponderance of firms in the larger cities and may be somewhat higher than the rates paid in the smaller communities. Data from these tabulations are available, upon request, from the Kentucky Department of Commerce, Frankfort, Kentucky 40601.



Associated Industries of Kentucky Area Wage Surveys

PER CAPITA PERSONAL INCOME

<u>Area</u>	<u>1973</u>	<u>1969</u>	<u>Percent Change</u>
Bracken County	\$3,241	\$2,565	26.4
Labor Market Area			
Range	\$2,962 - 4,129	\$2,268 - 3,034	N. A.
Kentucky	4,050	2,894	39.9
U. S.	5,041	3,733	35.1

Sources: U. S. Department of Commerce, Office of Business Economics, Survey of Current Business, August, 1974. U. S. Department of Commerce, Bureau of Economic Analysis, April, 1975.



## TRANSPORTATION

### Rail

Line serving Augusta - The Chessie System

Services - One freight making a daily stop; four through freights daily (two eastbound and two westbound); switching facilities; team track with space for approximately 15 cars; additional siding space for six cars; nearest piggyback facilities available at Cincinnati, 70 miles northwest of Augusta

There is no rail service to Brooksville.

For details on routing, schedules, rates, and services, contact:

Real Estate and Industrial Development  
The Chessie System  
2 North Charles Street  
Baltimore, Maryland 21201  
(301) 237-2754

### Highways

Augusta is served by Kentucky Highways 8, 19, and 435.  
Brooksville is served by Kentucky Highways 19, 10, and 1159.

### Truck Service

#### Company

#### Home Office

Budig Trucking Company

1100 Gest Street  
Cincinnati, Ohio 45203

Reinhardt Transfer Company  
(Augusta only)

1410 Tenth Street  
Portsmouth, Ohio 45662

#### Other Freight Services

#### Nearest Shipping Center

United Parcel Service

Maysville, 20 miles east of Augusta  
and Brooksville

HIGHWAY MILES AND TRUCK TRANSIT TIME IN DAYS FROM  
AUGUSTA, KENTUCKY, TO SELECTED MARKET CENTERS

City	Delivery		City	Delivery	
	Highway Miles	Time TL		Highway Miles	Time TL
Atlanta, Ga.	430	2	Los Angeles, Calif.	2,256	7
Birmingham, Ala.	490	3	Louisville, Ky.	129	2
Chicago, Ill.	363	2	Nashville, Tenn.	273	2
Cincinnati, Ohio	70	1	New Orleans, La.	803	3
Cleveland, Ohio	314	2	New York, N. Y.	729	4
Detroit, Mich.	335	2	Pittsburgh, Pa.	354	2
Knoxville, Tenn.	236	2	St. Louis, Mo.	408	1 & 2

Source: Delivery Time Only - Budig Trucking Company, 1100 Gest Street, Cincinnati, Ohio 45203.

Air

Nearest Commercial

Location: Greater Cincinnati Airport  
8 miles southwest of Covington, Kentucky -  
65 miles northwest of Augusta and 56 miles  
northwest of Brooksville

Runways: 3 paved  
Length: 5,500, 7,800 and 9,500 feet

Traffic Control: Tower, guards, ground control, clearance  
delivery, approach control, departure control

Lighting: Beacon, REIL, MALS-RAIL, ALS-SFL, HIRL,  
Red T-Bar, CL and TDZ

Services: TWA, Delta, American, Piedmont, Allegheny,  
and North Central Airlines; fuel 100, Jet A 50,  
650 turbine; storage; major A & E repairs;  
hotel; restaurant; airport limousine; taxi;  
freight handling

Air Freight Service: Freight carrying airlines regularly service  
this terminal.

Bus -

Augusta

Trailways Bus Lines

Brooksville

Nearest commercial bus service  
at Augusta, 9 miles distant

Water - Augusta is located on the Ohio River, affording the community  
water transportation capabilities.



POWER AND FUEL

Electricity

Company serving Augusta, Brooksville, and parts of Bracken County -  
Kentucky Utilities Company  
Source of power - Kentucky Utilities Company  
Total generating capacity - 1,615,500 KW  
For industrial rates contact:

Industrial Development Department  
Kentucky Utilities Company  
120 South Limestone Street  
Lexington, Kentucky 40507  
(606) 255-1461

Company serving Bracken County - Fleming-Mason RECC; Harrison  
RECC  
Source of power - East Kentucky Power Cooperative  
Total generating capacity - 496,000 KW  
For industrial rates contact:

Industrial Development Division  
East Kentucky Power Cooperative  
P. O. Box 707  
Winchester, Kentucky 40391  
(606) 744-4812

and/or

Fleming-Mason RECC  
P. O. Drawer 328  
Flemingsburg, Kentucky 41041  
(606) 845-2661

and/or

Harrison RECC  
P. O. Box 312  
Cynthiana, Kentucky 41031  
(606) 234-3131

Natural Gas

Company serving Augusta - City of Augusta Natural Gas Distribution System

Source of supply - Columbia Gas Transmission Corporation

Size of transmission mains - 18-inch (supplier); 4-inch (distributor)

Distribution mains - 2 and 3 inches

Distribution pressure - 25 psi

Btu content - 1,250 per cubic foot

Specific gravity - .60

For rates and supplies contact:

City of Augusta Natural Gas

Distribution System

P. O. Box 96

Augusta, Kentucky 41002

(606) 756-2474

Company serving Brooksville - Brooksville Utility System

Source of supply - Columbia Gas Transmission Corporation

Size of transmission mains - 16 inches (supplier)

Distribution mains - 2, 3, 4, and 6 inches

Distribution pressure - 15 psi

Btu content - 1,000 per cubic foot

Specific gravity - .60

For rates and supplies contact:

Brooksville Utility System

P. O. Box 216

Brooksville, Kentucky 41004

(606) 735-2501

Other Fuels

Propane and butane (Augusta and Brooksville)

Midwest Bottle Gas Distributor, Inc.  
Falmouth, Kentucky 41040

Williams Energy Company  
Route 435  
Minerva, Kentucky 41062

Fuel oils

Distillate fuel oil -

Augusta

Standard Oil Company (bulk plant)  
Blue Run Road  
Maysville, Kentucky 41056

Brooksville

Standard Oil Company (bulk plant)  
Blue Run Road  
Maysville, Kentucky 41056

Finch Oil Company (bulk plant)  
U. S. Highway 68  
Maysville, Kentucky 41056

Residual fuel oil - Arrangements must be made with the refinery.

Low sulphur content coal - Available in Kentucky



## WATER AND SEWERAGE

### Water

Company serving Augusta - City of Augusta Water System  
C/O City Hall  
Augusta, Kentucky 41002  
(606) 756-3332

Source - Two wells (500 gpm each)  
Treatment plant capacity - 720,000 gpd\*  
Average daily consumption - 300,000 gallons  
Type treatment - Chlorination and fluoridation  
Storage capacity - 300,000 gallons  
Size lines - 4, 6, 8, and 10 inches  
Average pressure - 60 psi  
Average temperature - 50 degrees F.

#### MONTHLY WATER RATES FOR WHOLESALE AND INDUSTRIAL CONSUMERS

---

First	100,000 gallons	\$ .50 per M gallons
Next	100,000 gallons	.35 per M gallons
Next	100,000 gallons	.25 per M gallons
All over	300,000 gallons	.15 per M gallons

Tap-on charge: \$35

---

\*Based on use of one 500 gpm pump pumping 24 hours per day. Pumps are alternated. Both pumps can be used in case of emergencies.

Company serving Brooksville - Brooksville Utility System  
C/O City Hall  
Brooksville, Kentucky 41004  
(606) 735-2501

Source of supply of treated water - Bracken County Water District No. 1  
Average daily consumption - 50,000 gallons  
Peak daily consumption - 70,000 gallons  
Storage capacity - 150,000 gallons\*  
Size lines - 2, 4, 6, and 8 inches  
Average pressure - 40 to 45 psi  
Average temperature - 60 degrees F.

MONTHLY WATER RATES FOR WHOLESALE  
AND INDUSTRIAL CONSUMERS

---

First	2,000 gallons	\$3.00 (Minimum)
All over	2,000 gallons	1.00 per M gallons

Tap-on charge: \$65

Name of water district - Bracken County Water District No. 1\*\*  
Route 1  
Augusta, Kentucky 41002  
(606) 756-2517

Area served - The city of Brooksville and all of Bracken County with  
the exception of the city of Augusta  
Date when water district began operating - 1964  
Source of raw water - Three wells  
Capacity of treatment plant - 250,000 gpd  
Type of treatment - Chlorination and fluoridation  
Average amount of water used in a 24-hour period - 160,000 gallons  
Peak amount of water used in a 24-hour period - 190,000 gallons  
Storage capacity - 150,000 gallons  
Average pressure - 40 to 45 psi  
Average temperature - 60 degrees F.  
Size lines - 2, 3, 4, 6, and 8 inches  
Rates - Residential

First	1,000 gallons	\$5.25 (Minimum)
Next	2,000 gallons	1.25 per M gallons
Next	2,000 gallons	1.00 per M gallons
All over	5,000 gallons	.85 per M gallons

Tap-on charge: \$150

---

\*Total storage of Bracken County Water District No. 1

\*\*A \$300,000 program of improvements was completed in August, 1975,  
including a new well with 200 gpm pump; two new 200-gpm booster pumps  
with telemetering controls; and 11 miles of new distribution lines.

Surface water sources - The Ohio River and North Fork of the Licking River

Average discharge - Ohio River at Maysville, Kentucky, 91,010 cfs (23 years, USGS); North Fork Licking River near Lewisburg, Kentucky, 150 cfs (28 years, USGS)

Expected ground water yield - 500 - 1,000 gallons per minute along the Ohio River; 5 - 50 gallons per minute and 50 - 200 gallons per minute along the Licking River in southern Bracken County; 5 gallons per minute or less in remainder of county

### Sewerage

A 201 Facilities Plan for the city of Augusta has been submitted to the federal Environmental Protection Agency. The plan contains provisions for a 200,000 gallon per day sewage treatment plant. The plant will provide secondary treatment with contact stabilization, chlorination and sludge beds used in the treatment process. Treated effluent will be discharged into the Ohio River. If the 201 Plan is approved by EPA, construction of the plant should begin by the fall of 1976 with the facility operating by mid-1977.

Company serving Brooksville - Brooksville Utility System  
C/O City Hall  
Brooksville, Kentucky 41004  
(606) 735-2501

Design capacity - 200,000 gpd

Average daily flow - 35,000 gallons

Treatment - Primary

Type treatment - Aeration and chlorination

Treated effluent discharged into - A tributary of Locust Creek

Size of sanitary mains - 6, 8, and 10 inches

Rates -

0 -	2,000 gallons	\$6.80 (Monthly minimum)
2,000 -	4,000 gallons	1.35 per M gallons
4,000 -	8,000 gallons	1.25 per M gallons
8,000 -	15,000 gallons	1.00 per M gallons
All over	15,000 gallons	.85 per M gallons

Tap-on charge: \$25



# CLIMATE

## Bracken County

### Temperature

Annual mean (30-year record)	54.0 degrees
Average annual 1974	53.5 degrees
Record highest, August, 1962 (13-year record)	102.0 degrees
Record lowest, January, 1963 (13-year record)	- 19.0 degrees
Normal heating degree days (30-year record)	5,070
(Heating degree day totals are the sums of negative departures of average daily temperatures from 65 degrees F.)	

### Precipitation

Mean annual total (30-year record)	39.04 inches
Mean annual snowfall (27-year record)	23.40 inches
Total precipitation 1974	46.76 inches
Mean number days precipitation (.01 inch or more) (27-year record)	129
Average number days thunderstorms (27-year record)	44

### Prevailing Winds (16-year record)

South,  
southwest

### Relative Humidity (12-year record)

1 a.m.	77 percent
7 a.m.	81 percent
1 p.m.	59 percent
7 p.m.	63 percent

Source: U. S. Department of Commerce, Environmental Science Services  
Administration, Climatological Data, 1974. Station of record:  
Cincinnati, Ohio - Greater Cincinnati Airport.

LOCAL GOVERNMENT

City

Augusta

Structure - Mayor - 4-year term; 6 councilmen - 2-year terms

Budget 1975-76 - General Fund \$ 54,804.47

Water and Sewer Fund 63,462.84

City Gas System 208,964.52

Fees and licenses - Business license fees range from \$5.50 to \$200 annually.

Brooksville

Structure - Mayor - 4-year term; 6 councilmen - 4-year terms

Budget 1974

(Calendar 1974) General Fund \$60,405.21

Water and Sewer Fund 52,634.33

City Gas System 69,966.55

Fees and licenses - Business license fees - \$11 and \$21 annually.

County

Structure - County Judge - 4-year term; 8 magistrates - 4-year terms

Budget 1975-76 - General Fund \$122,551; Road Fund \$121,785

Assessed Value of Property, 1975

<u>Classes of Property</u>	<u>Augusta</u>	<u>Brooksville</u>	<u>Bracken County</u>
Real Estate	\$5,131,981	\$3,042,695	\$43,424,255
Tangibles	1,135,320	869,321	8,508,914

## Property Taxes

Land and buildings are taxed by the state and may be taxed by local jurisdictions. The state rate is \$0.015 per \$100 of assessed valuation.

Tangible personal property owned by manufacturers (automobiles, trucks, finished goods, office furniture, office equipment) is taxed by the state at \$0.15 per \$100 and may be taxed by local jurisdictions.

Manufacturing machinery, raw materials inventories, pollution control equipment, and goods in process inventories are not subject to local taxation. The state rate is \$0.15 per \$100.

Property stored in public warehouses is not subject to local taxation. The state rate is only \$0.015 per \$100.

All property is assessed at 100 percent of fair cash value.

### Local Property Tax Rate Per \$100 of Assessed Valuation, 1975\*

<u>Taxing Jurisdiction</u>	<u>Augusta</u>	<u>Brooksville</u>	<u>Bracken County</u>
County	\$ .286	\$ .286	\$ .286
School	.796	.566	.566
City	.331	.245	

## Planning and Zoning

The Bracken County Planning Commission is inactive.

Mandatory state codes enforced - Plumbing, National Fire Protection Association Code, National Building Code (for major buildings and residential construction containing more than 12 bedrooms per building)

\*Kentucky Department of Revenue, Kentucky Property Tax Rates, 1975



Safety

<u>Police</u>	<u>Augusta</u>	<u>Brooksville</u>	<u>Bracken County</u>
Total staff	3	1	5
Radio-patrol cars	1	1	3

Fire

American Insurance Association Fire Rating	6	7
Volunteers	40	30

Rescue Service

Augusta Rescue Squad:

Number of volunteers - 40

Equipment - Two rescue trucks, two portable generators, four flood lights, three oxygen resuscitators, and a high pressure pump

Personnel training - Five Emergency Medical Technicians (EMTS); three paramedics; first aid and fire fighting training

Solid Waste

	<u>Augusta</u>	<u>Brooksville</u>	<u>Bracken County</u>
Type service	Municipal	Private	Private
Fee charged:			
residential	\$1.50 per month	\$2.40 per month	\$2.40 per month
business	\$2.00 per month	According to volume	According to volume
industrial	Varies according to volume and service	According to volume	According to volume
Collection frequency:			
residential	Once per week	Once per week	Once per week
business	Twice per week	Once per week	Once per week
industrial	Varies according to volume and service	Once per week	Once per week
Trash pickup	Once per month	Annual clean-up campaign	Annual clean-up campaign
Disposal method	Sanitary landfill	Sanitary landfill	Sanitary landfill

## EDUCATION

### Public Schools

	<u>Augusta Independent</u>	<u>Bracken County</u>
Total Enrollment		
(Fall, 1975)	388	1,259
Elementary	200	853
High School	188	406
Student-Teacher Ratio	18-1	20-1
Elementary	21-1	20-1
High School	15-1	20-1
Percent High School		
Graduates to College	18.5	34.4
Expenditures Per Pupil		
(1974-75)	\$ 658.04	\$ 629.84
Bonded Indebtedness,		
June 30, 1975	\$259,000.00	\$987,000.00

### Nonpublic Schools

Total Enrollment	61
Elementary	61
Student-Teacher Ratio	20-1
Elementary	20-1

Area Colleges and Universities

<u>Name</u>	<u>Location (Miles Distant)</u>	<u>Enrollment (Fall, 1975)</u>	<u>Highest Degree Conferred</u>
Maysville Community College	Maysville (20)	362	Associate
Georgetown College	Georgetown (58)	1,062	Masters
Thomas More College	St. Mitchell (62)	1,352	Baccalaureate
Morehead State University	Morehead (64)	7,318	Masters, Ph. D. <u>1/</u>
Northern Kentucky State College	Covington (67)	6,041	Masters, J. D. <u>2/</u>
Midway Junior College	Midway (68)	350	Associate
University of Kentucky	Lexington (69)	22,526	Ph. D., M. D., D. M. D., J. D.
Transylvania University	Lexington (69)	722	Masters <u>3/</u>
Lexington Technical Institute	Lexington (69)	1,654	Associate
Southeastern Christian College	Winchester (69)	91	Associate
University of Cincinnati	Cincinnati, Ohio (70)	36,262 <sup>4/</sup>	Academic and Professional
Xavier University	Cincinnati, Ohio (70)	6,260 <sup>4/</sup>	Masters
College of Mt. St. Joseph on the Ohio (women)	Cincinnati, Ohio (70)	870 <sup>4/</sup>	Baccalaureate
Edgecliff College	Cincinnati, Ohio (70)	787 <sup>4/</sup>	Baccalaureate
Hebrew Union College	Cincinnati, Ohio (70)	216 <sup>4/</sup>	Ph. D., D. N. L.
Athenaem of Ohio (men)	Norwood, Ohio (70)	222 <sup>4/</sup>	Masters

1/ Cooperative program with the University of Kentucky, Lexington, for a Ph. D. in education only.

2/ Salmon P. Chase College of Law is part of Northern Kentucky State College.

3/ Courses in the Masters Degree program are taught on the Transylvania campus by Xavier University of Cincinnati faculty members. The degree is awarded by Xavier University.

4/ Enrollment-1973-74.



## Vocational Schools

	<u>Nearest State School</u>	<u>Nearest Area Education Center</u>
	Northern Kentucky State Vocational-Technical School	Maysville Area Vocational Education Center
Location	Covington	Maysville
Miles Distant	67 miles from Augusta	20 miles from Augusta
Curriculum	Clerical Data Processing Secretarial Child Care Services Clothing Services Commercial Foods Food Services Cosmetology Practical Nursing Industrial Education Air Conditioning and Heating Auto Body Repair Auto Mechanics Carpentry Commercial Art Drafting Electronics (Technology) Graphic Arts (Printing) Machine Shop Radio and TV Repair Welding	Agribusiness Home Economics Industrial Education Auto Body Auto Mechanics Building Trades Drafting Industrial Electricity

Arrangements can be made to provide training in the specific production skills required by an industrial plant. Instruction may be conducted either in the vocational school or in the industrial plant, depending upon the desired arrangement and the availability of special equipment.

## HEALTH

### Local Medical Personnel

	<u>Augusta</u>	<u>Brooksville</u>
Physicians	1	2
Dentists	1	1

### Hospitals

<u>General Hospital</u>	<u>Location</u>	<u>Beds</u>
Hayswood Hospital	Maysville, 20 miles east of Augusta and Brooksville	143

General hospital facilities - Three operating rooms, recovery room, nursery, five X-ray units, two obstetrical rooms, laboratory, pharmacy, physical therapy department, extended care facility, three intensive care rooms, and medical staff library

Medical staff - 3 surgeons, 7 medical doctors, 1 OB-GYN specialist, 3 consulting pathologists, 2 consulting radiologists, 1 physical therapist, 27 registered nurses, 22 licensed practical nurses, 4 X-ray technicians, 5 laboratory technicians, 1 physical therapy technician, and 3 physical therapy aides

### Other Medical Facilities

Comprehend, Inc., Comprehensive Care Centers - Augusta and Brooksville

### Ambulance Service

Name - Bracken County Ambulance Service

Staff - Two full-time Emergency Medical Technicians (EMTs) on 24-hour call; 20-25 EMT's (part time); 24-hour ambulance dispatcher in Augusta

Service - 24-hour, county-wide

Equipment - Two ambulances containing all standard emergency medical equipment - one stationed at Augusta and one at Brooksville

Nursing Homes

	<u>Number</u>	<u>Beds</u>
Personal care homes	1	50

Public Health

Facility - Bracken County Health Department  
Staff - Two registered nurses, one environmental health technician,  
and one administrator



OTHER LOCAL FACILITIES

Communications

	<u>Augusta</u>	<u>Brooksville</u>
Telephone -	Kentucky Telephone Company	Kentucky Telephone Company
Services -	Standard	Standard
Postal - U. S. Post Office		
Class -	Second	Second
Mail received -	Twice daily	Once daily
Mail dispatched -	Twice daily	Once daily
Newspapers -	The Augusta Times	The Bracken County News
Weekly and circulation -	1,800	2,550
Other papers received from -	Maysville, Lexington, and Louisville, Kentucky; Cincinnati, Ohio	Maysville, Lexington, and Louisville, Kentucky; Cincinnati, Ohio
Radio -		
Stations received from -	Maysville, Lexington, and Louisville, Kentucky; Cincinnati and Dayton, Ohio	Maysville, Cynthiana, Lexington, and Louisville, Kentucky; Cincinnati and Dayton, Ohio
Television -		
Reception from -	Lexington, Kentucky; Cincinnati and Dayton, Ohio	Lexington, Kentucky; Cincinnati, Dayton, and Columbus, Ohio
Kentucky Educational Television -	Covington, Channel 54	Covington, Channel 54

Library Services

Public library - Knoedler Memorial Library - Augusta

Size collection - 5,487 volumes

Circulation, 1974-75 - 5,446

Services - Records, pictures, meeting facilities, story hour, record player, genealogical research department, member - Kentucky Inter-Library Communications Network

Religious Institutions

	<u>Augusta</u>	<u>Brooksville</u>
Number of churches -	7	6
Denominations	Baptist Catholic Christian Methodist Nazarene Presbyterian	Assembly of God Baptist Catholic Christian Methodist Pentecostal
Nearest Synagogues -	Cincinnati, Ohio 16 synagogues (orthodox, reform, traditional, and conservative)	Cincinnati, Ohio 16 synagogues (orthodox, reform, traditional, and conservative)

Financial Institutions

<u>Banks</u>	<u>Assets</u>	<u>Deposits</u>	<u>Statement Date</u>
The First National Bank (Brooksville)	\$12,762,973.02	\$11,312,918.81	12/31/75
Farmers Liberty Bank (Augusta)	8,835,807.38	7,770,519.80	12/31/75

Hotels and Motels

Augusta and Brooksville have no hotels or motels.

## Clubs and Organizations

### Augusta

Business and Civic - Chamber of Commerce, Rotary Club

Fraternal - Masonic Lodge, American Legion, VFW, Knights  
of Columbus

Women's - Garden Club, Eastern Star, Daphne Club, Homemakers,  
American Legion Auxiliary, VFW Auxiliary, DAR, Volunteer  
Firemen's Auxiliary, Women's Club

Youth - Boy Scouts, Girl Scouts, Augusta Little League, Junior  
Firemen of Augusta

### Brooksville

Business and Civic - Lions Club, Brooksville Businessmen's Club

Fraternal - Masonic Lodge

Women's - Woman's Club, Garden Club, DAR, Eastern Star, Volunteer  
Firemen's Auxiliary

Youth - Cub Scouts, FFA, FHA, Little League, 4-H, Hi-Y, Y-Teens,  
Beta Club



## RECREATION

### Local

Augusta is in the process of improving city recreation facilities. There are three city parks. One has been expanded to include a new public swimming pool and two new tennis courts. A new park is under construction on the riverfront next to an old row house which is being restored to house a museum of the area's history. At present, a temporary history museum is open to the public on Sundays from May through December. The city is building a new athletic field which will be used for baseball and football. In addition, Augusta maintains boat launching facilities and a public recreation area on that site. There is also a private bowling alley and a youth recreation center. A local citizens committee has been formed to investigate possible municipal acquisition of the Augusta Ferry, presently not in service. Plans call for the ferry to be operated as a public utility and tourist attraction. The Save Historic Augusta Restoration Effort, a 100 member group, is very active in promoting the restoration of Augusta's old buildings, some dating to the late eighteenth century. Present efforts of this group focus on restoring houses along Augusta's riverfront. The group sponsors a tour of historic homes, a flea market, and an antique show each Labor Day weekend. The city, also maintains a supervised recreation program during the summer months.

Brooksville has purchased additional land to expand one of its two city parks. The city also has recently finished construction of a \$171,000 City Hall-Community Center. Other local recreation facilities include: a public swimming pool, one tennis court, one baseball diamond, one football field, areas for ice skating and horseshoe games, and a Putt-Putt Golf Course.

The Ohio River offers numerous water recreational opportunities for residents of Bracken County.

Area (Within 60 miles)

1. Kincaid Lake State Park, near Falmouth - 175-acre lake, camping (April 1-November 1), hiking, swimming, boating, picnicking, playground, amphitheatre, shuffleboard, mini-golf.

2. Blue Licks Battlefield State Park, near Mt. Olivet - (open April 1 - November 1) 100 acres on site of what is called the final battle of the American Revolution and the Indian-Pioneer struggle in Kentucky. Camping, 80-foot Olympic pool, hiking, picnicking, playground, fishing, museum.

3. Big Bone Lick State Park, near Florence - site of ancient salt sulphur spring used by prehistoric animals, the largest graveyard of ice-age animals ever discovered, museum, camping (open all year), picnicking, swimming pool.

## COMMUNITY IMPROVEMENTS

### Recent:

#### Augusta

1. Installation of fluoridation equipment in the city water system.
2. Improvements in the Augusta Independent School System: remodeling of the high school gymnasium; remodeling of the Home Economics Department, lunchroom, and kitchen; automatic fire alarm system installed in all buildings; and the addition to the curriculum of courses in distributive education, instrumental music, bachelor living, and consumer education (required of all seniors).
3. New 750 gpm pumper for the Augusta Volunteer Fire Department.
4. Expansion of a city park including a new public swimming pool and two new tennis courts.
5. Extension of natural gas and water lines to the community of Needmore, annexed by Augusta.
6. Old homes along River Side Drive placed on the National Register of Historic Places.

#### Brooksville

1. New \$171,000 City Hall-Community Center.

#### Bracken County

1. New ambulance service.
2. A \$300,000 program of improvements for the Bracken County Water District No. 1 including: a new well with 200 gpm pump; two new 200 gpm booster pumps with telemetering controls; and 11 miles of new distribution lines.



Planned:

Augusta

1. Construction of a \$250,000 sewage treatment plant.
2. A 100-acre industrial and residential site to be financed through the federal Department of Housing and Urban Development's Community Development Block Grant Program.
3. Levees at either end of town to prevent backwater flooding from Bracken Creek and Turtle Creek.
4. A floodwall along Second Street to protect against Ohio River floodwaters.

Underway:

Augusta

1. Construction of a new public park on the riverfront.
2. Restoration of an old row house to house a museum of the area's history.
3. Construction of a new athletic field.
4. A citizens' committee studying possible acquisition of the Augusta Ferry by the city to be operated as a public utility and tourist attraction.
5. Save Historic Augusta Restoration Effort, a 100 member group, active in promoting restoration of the city's old buildings.

Brooksville

1. Construction of the new Taylor Elementary School.
2. Purchase of a new 750-gpm pumper for the Brooksville Volunteer Fire Department.
3. New police cruiser for the Brooksville Police Department.
4. Enlargement of a city park.

## HISTORY

Bracken County, the twenty-third county established in Kentucky, dates from 1796. The first surveys of the area were made as early as 1773. William and Matthew Bracken, for whom the county is named, were two of the area's early explorers, hunters, and Indian fighters.

Augusta, the largest community in Bracken County with a 1973 population of 1,430, was established in 1781 by Captain Phillip Buckner. One of the oldest settlements in the state, Augusta preserves its rich heritage through a continuous effort aimed at restoring its old homes and buildings. Augusta was the first county seat and an important early river port. It also was a popular overnight stop for river travelers. Composer Stephen C. Foster was one of the town's most famous guests. As a youth, Foster would stop at Augusta enroute from Pittsburgh to Louisville, to visit his uncle, Dr. Joseph A. Tomlinson who was President of Augusta College. It was here that he became acquainted with the melodic and harmonious music of the Negro slaves. Tradition has it that this experience inspired Foster in later years to transform into written song the sorrow which the Negroes' voices reflected. Perhaps the main highlight of Augusta's history was the establishment of Augusta College in 1822. It was the first endowed Methodist college in the world.

During the Civil War, Augusta was the target of an attack by General John Hunt Morgan's Confederate Raiders. Led by Colonel Basil W. Duke, the Rebels, on September 27, 1862, launched an offensive against the Federal Home Guard under the command of Colonel Joshua T. Bradford. During a fierce battle, Duke burned the buildings which the Home Guard occupied, drove off two gunboats in the Ohio River, and forced the Federals to surrender. The Confederates, however, suffered such heavy losses that they were forced to withdraw from Augusta and abandon a planned march against Cincinnati.

Brooksville, established in 1839, has served as the county seat of Bracken County since 1842. It is situated near the geographic center of the county and had a population of 632 in 1973.

Bracken County has always had an agricultural economy. German immigrants introduced grape production and wine making to the region in the 1870's. The soil and climate seemed so adapted to the industry that Bracken soon became the leading wine producing county in the United States. Industrious vineyardists had visions of creating the "Rhineland of America" along the county's riverbanks, but disastrous winters and blight brought setbacks and the wine industry faded. The farmland around Brooksville

produces excellent burley tobacco, and at one time led the entire region in that industry. Tobacco hogsheads were shipped from Augusta by the thousands. The first White Burley tobacco (1897) was developed from Bracken seed.

The total number of Bracken County residents employed in 1974 averaged 2,370, including 810 in agriculture and 240 in government. Manufacturing employers in the county reported 390 workers; trade and services firms employed 200. The largest manufacturing employers, both located at Augusta, are: the Clopay Corporation, which manufactures polyethylene and vinyl trim; and the F. A. Neider Company, which makes metal stampings, metal fasteners, and furniture glides.

Persons of note, born in Bracken County include John Gregg Fee, who founded Berea College in 1855, and Dr. Joshua T. Bradford (1819-1871), one of Kentucky's noted surgeons.



**Kentucky Department of Commerce  
Capital Plaza Tower  
Frankfort, Kentucky 40601**

---

**Industrial Development Division  
(502) 564-7140**

**Community Services Division  
(502) 564-4300**

**Business Development Division  
(502) 564-4300**

**Research and Planning Division  
(502) 564-4886**

**Office of Minority Business Enterprises  
(502) 564-4270**

**Map Sales Office  
133 Holmes Street  
(502) 564-4715**

**Industrial Development Finance Authority  
(502) 564-4554**