

1970

Industrial Resources: Caldwell County - Princeton

Kentucky Library Research Collections
Western Kentucky University, spcol@wku.edu

Follow this and additional works at: https://digitalcommons.wku.edu/caldwell_cty

 Part of the [Business Administration, Management, and Operations Commons](#), [Growth and Development Commons](#), and the [Infrastructure Commons](#)

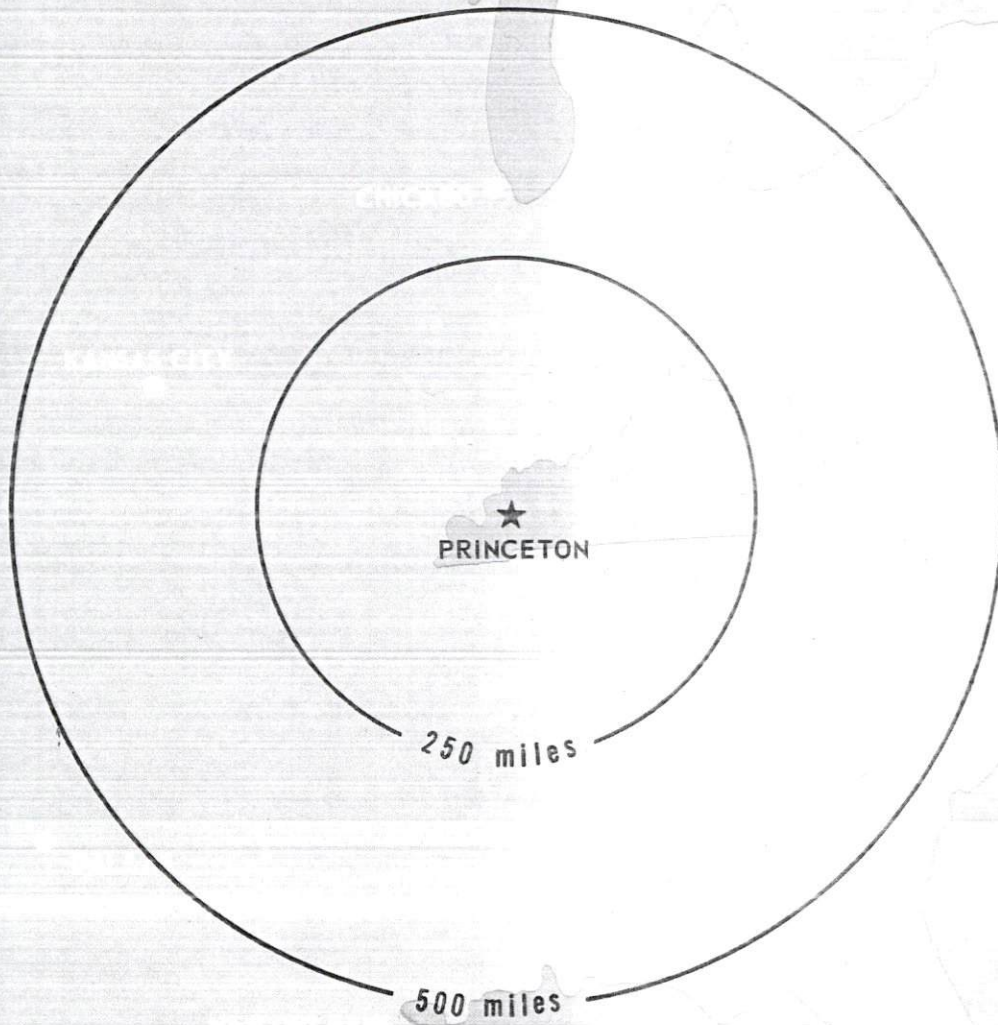
Recommended Citation

Kentucky Library Research Collections, "Industrial Resources: Caldwell County - Princeton" (1970). *Caldwell County*. Paper 11.
https://digitalcommons.wku.edu/caldwell_cty/11

This Report is brought to you for free and open access by TopSCHOLAR®. It has been accepted for inclusion in Caldwell County by an authorized administrator of TopSCHOLAR®. For more information, please contact topscholar@wku.edu.

INDUSTRIAL RESOURCES

PRINCETON, KENTUCKY



CURRENT INDUSTRIAL RESOURCES

CURRENT INDUSTRIAL RESOURCES, PRINCETON, KENTUCKY

This is a 1974 supplement to "Industrial Resources, Princeton, Kentucky" which was published in 1973.

Population

	<u>1972</u> (Provisional)	<u>1970</u>	<u>1960</u>
Princeton	N. A.	6,292	5,618
Caldwell County	13,000	13,179	13,073
Labor Market Area	146,800	143,527	146,121
(Includes Caldwell, Christian, Crittenden, Hopkins, Lyon, Trigg and Webster Counties.)			

General Employment Characteristics

<u>Industry</u>	<u>Employment 1972</u>	
	<u>Caldwell County</u>	<u>Labor Market Area</u>
TOTAL	5,690	55,220
Agricultural	660	5,170
Nonagricultural	5,030	50,050
Manufacturing	1,730	10,175
Trades and Services	1,043	12,317
Government	550	9,440
Other	1,707	18,118

Manufacturing Employment

<u>Type Industry</u>	<u>Caldwell County</u>			<u>Labor Market Area</u>		
	<u>Sept. 1973</u>	<u>Sept. 1963</u>	<u>%Change</u>	<u>Sept. 1973</u>	<u>Sept. 1963</u>	<u>%Change</u>
TOTAL	1,766	782	+125.8	10,377	4,860	+ 113.5
Food & Kindred Products	14	13	+ 7.7	459	566	- 18.9
Tobacco	0	0	--	14	16	- 12.5
Apparel, Textiles, Leather	502	529	- 5.1	2,756	1,883	+ 46.4
Lumber, Furniture	64	23	+178.3	354	571	- 38.0
Printing & Publishing, Paper	13	13	--	343	492	- 30.3
Chemicals, Petroleum & Coal, Rubber	0	9	-100.0	756	186	+ 306.5
Stone, Clay & Glass	0	21	-100.0	88	151	- 41.7
Primary Metals	0	0	--	430	43	+ 900.0
Machinery & Metal Products, Equipment	1,173	174	+574.1	4,972	945	+ 426.1
Other	0	0	--	205	7	+2828.6

There are presently 17 manufacturing firms in Princeton. Major firms, employment, and year started operations:

<u>Firms</u>	<u>Employment</u>	<u>Year started operations</u>
Arvin Industries	1,100	1963
Grinnell Corporation	345	1962
Princeton Hosiery Mills	450	1918

Labor Supply

	<u>Caldwell County</u>			<u>Labor Market Area</u>		
	<u>Total</u>	<u>Male</u>	<u>Female</u>	<u>Total</u>	<u>Male</u>	<u>Female</u>
Current (1973)	2,170	1,030	1,140	11,330	5,390	5,940
Potential additions next five years	1,182	570	612	13,311	6,857	6,454

Personal Income

Caldwell County, 1971: Per Capita - \$3,045
 1961: Per Capita - \$1,173

Truck Service

<u>Company</u>	<u>Home Office</u>
Harper Truck Service, Inc.	Paducah, Kentucky
A. Ligon Truck Line, Inc.	Lebanon, Kentucky
McLean Trucking Company	Winston-Salem, North Carolina
Schrodgers Express, Inc.	Cincinnati, Ohio
Skaggs Transfer, Inc.	Louisville, Kentucky
Tennessee Cartage Company, Inc.	Nashville, Tennessee
United Trucking Service, Inc.	Detroit, Michigan
Wilson Brothers*	Princeton, Kentucky (Local terminal)
Marvin Hayes Lines, Inc.**	Clarksville, Tennessee
Kentucky T.O.F.C. Delivery Service**	Princeton, Kentucky (Local terminal)
Guess Trucking and Construction Company, Inc.**	Princeton, Kentucky (Local terminal)
United Parcel Service	Louisville, Kentucky

*Produce hauler only - not general freight.

**Local cartage companies - do not provide over-the-road service.

Power and Fuel

Electric Distributors

Princeton Electric Plant Board
Pennyrile RECC
Henderson-Union RECC
Kentucky Utilities Company

Source of Supply

Tennessee Valley Authority
Tennessee Valley Authority
Big Rivers RECC
Kentucky Utilities Company

Natural Gas Distributor

Western Kentucky Gas Company

Specific Gravity

.60

Btu per cu. ft.

1,000

Water and Sewerage

Water: Daily treatment capacity - 2,000,000 gallons; average daily use - 781,000 gallons; peak daily use - 1,311,000 gallons; storage capacity - 900,000 gallons; size distribution lines 4, 6, 8, 10 and 16 inches

Rates:

5/8" Meter 150 cu. ft.		\$ 2.25
Next 100 cu. ft. @ .65	.65	
3/4" Meter 250 cu. ft.		2.90
Next 350 cu. ft. @ .65	2.28	
Next 150 cu. ft. @ .55	.83	
1 " Meter 750 cu. ft.		6.01
Next 350 cu. ft. @ .55	1.92	
1 1/4" Meter 1,100 cu. ft.		7.93
Next 900 cu. ft. @ .45	4.05	
1 1/2" Meter 2,000 cu. ft.		11.98
Next 1,100 cu. ft. @ .45	4.95	
Next 700 cu. ft. @ .40	2.80	
2 " Meter 3,800 cu. ft.		19.73
Next 3,600 cu. ft. @ .40	14.40	
3 " Meter 7,400 cu. ft.		34.13
Next 2,600 cu. ft. @ .40	10.40	
Next 9,450 cu. ft. @ .35	33.07	
4 " Meter 19,450 cu. ft.		77.60

All over 10,000 cu. ft. @ .35 per hundred cu. ft.

Water District: A county water district is presently being planned. The water district will purchase treated water from the Princeton Water Department.

Sewerage: Type treatment - primary and secondary; design capacity - 1,000,000 gallons per day; size of sewer mains - 8, 10 and 15 inches
Rates:

50 percent of the water bill

Local Government

Business Fees and Licenses: Occupational license tax - 1 percent on wages and profits

Property Tax Rates

Property tax rates per \$100 of assessed valuation, 1973

	<u>Princeton</u>	<u>Caldwell County</u>
State	\$.015	\$.015
County	.192	.192
School	.409	.409
City	.150	
Total	\$.766	\$.616

Special: (Not county wide) Donaldson Creek Watershed - \$.11

Tax for Schools

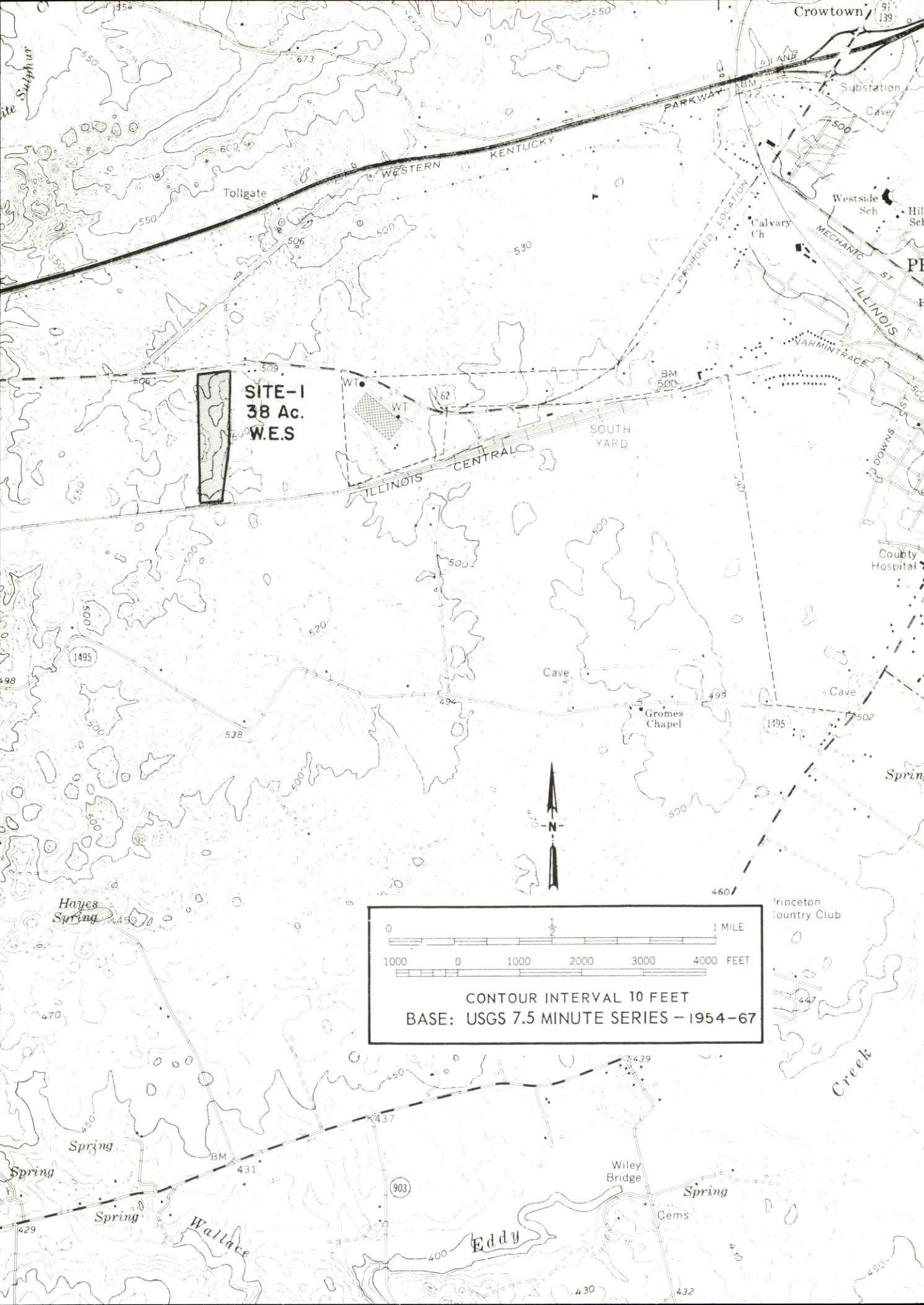
Caldwell County levies a 3 percent tax on utilities receipts for schools.

Industrial Sites

The sites shown on the 1973 site map remain available for industrial use.

PRINCETON INDUSTRIAL SITES

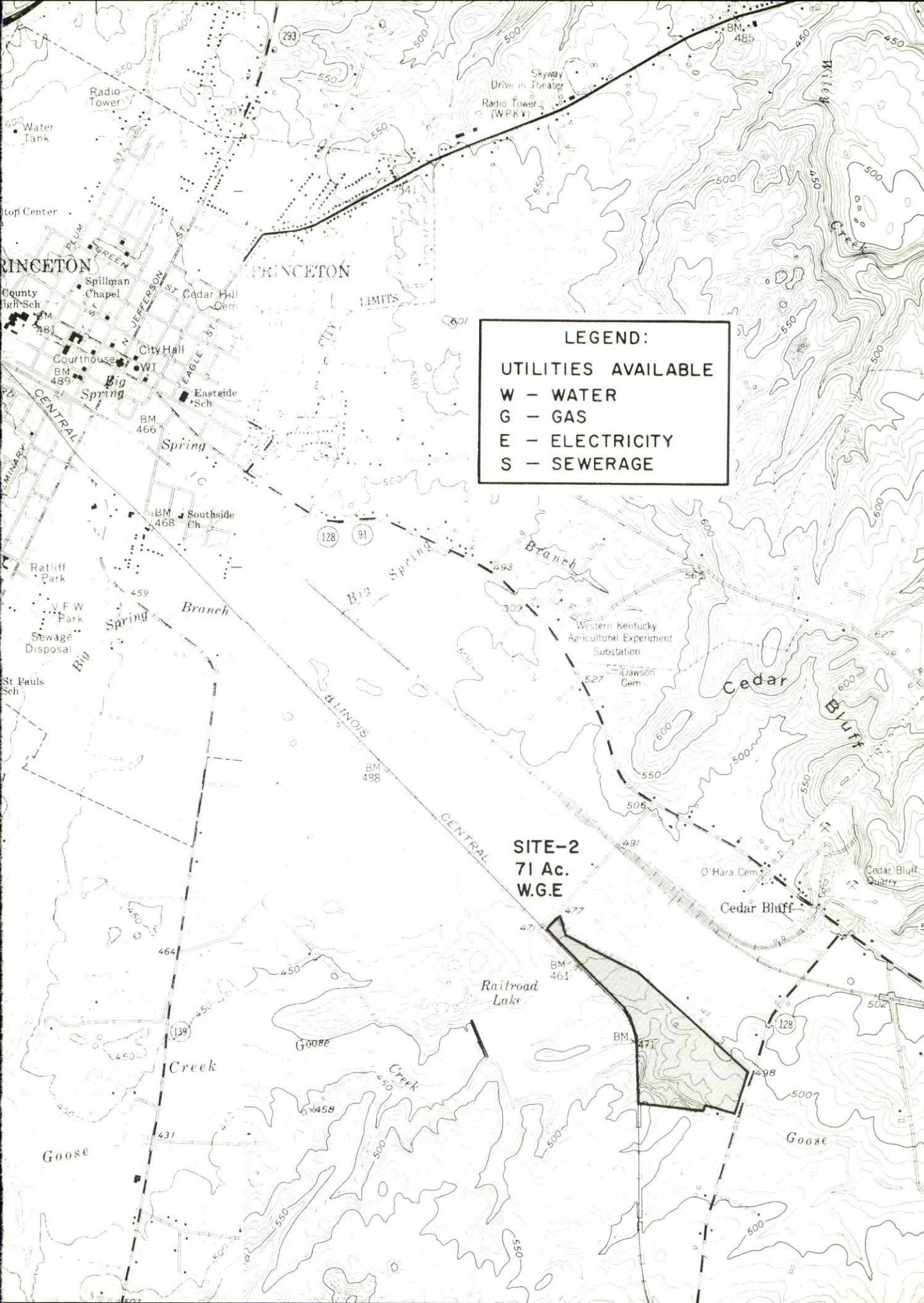
1970



SITE-1
38 Ac.
W.E.S.

0 1/2 1 MILE
1000 0 1000 2000 3000 4000 FEET

CONTOUR INTERVAL 10 FEET
BASE: USGS 7.5 MINUTE SERIES - 1954-67



LEGEND:

UTILITIES AVAILABLE

W - WATER

G - GAS

E - ELECTRICITY

S - SEWERAGE

**SITE-2
71 Ac.
W.G.E.**

PRINCETON INDUSTRIAL SITES

For additional information concerning the following sites, contact the Princeton Industrial Foundation, Princeton, Kentucky; or the Kentucky Department of Commerce, Frankfort, Kentucky.

SITE # 1: ACREAGE AND TOPOGRAPHY: 38 acres, rolling
LOCATION: West of Princeton, adjoining city limits
ZONING: None
HIGHWAY ACCESS: U. S. 62 borders site on the north.
RAILROADS: Illinois Central Railroad along southern border of site
WATER: Princeton Municipal Water Works
SIZE LINE: 8-inch, 1,000 feet from site
GAS: Western Kentucky Gas Company
SIZE LINE: 4-inch, 5,600 feet from site
ELECTRICITY: Princeton Electric Plant Board
SEWERAGE: Princeton Municipal Water Works, 1,000 feet from site
OWNERSHIP: Princeton Industrial Foundation

SITE # 2: ACREAGE AND TOPOGRAPHY: 71 acres, level to gently rolling
LOCATION: 2 1/2 miles southeast of Princeton
ZONING: Industrial
HIGHWAY ACCESS: On Kentucky 128
RAILROADS: Illinois Central Railroad borders site on the west.
WATER: Princeton Municipal Water Works
SIZE LINE: 10-inch
GAS: Western Kentucky Gas Company
SIZE LINE: 4-inch high pressure
ELECTRICITY: Pennyrile RECC
SEWERAGE: Package plant necessary
OWNERSHIP: Illinois Central Railroad

INDUSTRIAL RESOURCES

PRINCETON, KENTUCKY

Prepared by

The Kentucky Department of Commerce

in cooperation with

The Princeton Chamber of Commerce

1970

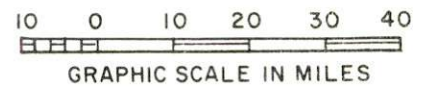
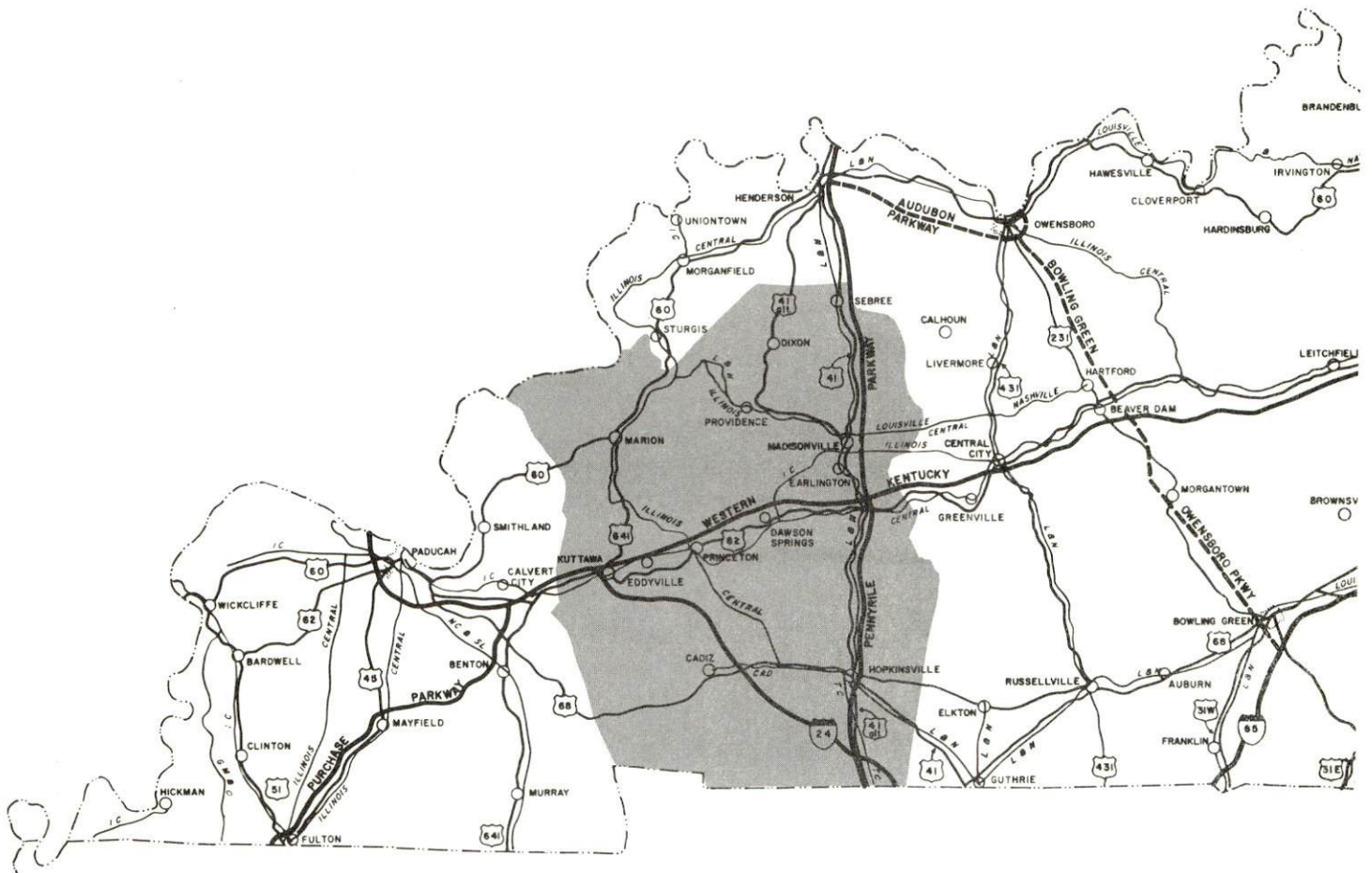
TABLE OF CONTENTS

<u>Chapter</u>	<u>Page</u>
INDUSTRIAL SITES	i
PRINCETON, KENTUCKY - A RESOURCE PROFILE	1
THE LABOR MARKET.	3
Population Trends	3
General Employment Characteristics, 1969	3
Manufacturing Employment Trends by Industry	3
Caldwell County Manufacturing Firms, Their Products and Employment	4
Wage Rates for Selected Occupations	6
Labor Organizations	6
Current and Future Labor Supply.	7
Total Personal Income	7
Per Capita Personal Income.	7
EDUCATION	8
Public Schools	8
Parochial, Private and Special Schools	8
Vocational Schools	8
Colleges and Universities	9
TRANSPORTATION	11
Rail.	11
Truck Service	11
Air	12
Bus	12
Taxi	12
POWER AND FUEL	13
Electricity.	13
Natural Gas	13
WATER AND SEWERAGE	14
Water	14
Sewerage	15

<u>Chapter</u>	<u>Page</u>
LOCAL GOVERNMENT16
City16
County.16
Assessed Value of Property - 196916
Local General Property Tax Rates Per \$100 of Assessed Valuation - 196916
Planning and Zoning.16
Safety17
Police17
Fire17
Rescue Service17
Sanitation17
HEALTH18
Hospitals18
Nursing Homes18
Public Health18
OTHER LOCAL FACILITIES19
Communications19
Library Services19
Religious Institutions19
Financial Institutions20
Hotels and Motels20
Clubs and Organizations20
RECREATION23
Local23
Area23
AGRICULTURE - NATURAL RESOURCES - CLIMATE24
Agriculture24
Natural Resources24
Climate24
HISTORY.25

PRINCETON LABOR MARKET AREA

Shaded area denotes labor market area



PRINCETON, KENTUCKY - A RESOURCE PROFILE

Location

Princeton, a small but progressive community, is located in the Pennyryle section of western Kentucky. Princeton, the county seat of Caldwell County, is situated on the Western Kentucky Parkway, and is 167 miles southwest of Louisville and 48 miles east of Paducah, Kentucky. The population of Princeton is 6,110; the population of Caldwell County is 12,603.

The Economic Framework

Total employment in Caldwell County averaged 5,800 in 1969 with manufacturing providing 1,700 of these jobs. During the first nine years of the decade manufacturing employment increased by 1,573 jobs or 237 percent. Major industrial products are electrical equipment, steel welding fittings, and children's hosiery.

Per capita income in the county in 1968 was \$2,434.

In the Caldwell County labor market area, which includes Caldwell and its six surrounding counties, total employment in 1969 averaged 48,400. Manufacturing provided 8,135 of these jobs, while trade and services provided 10,935 jobs. Area industrial employment is heaviest in electrical equipment, apparel, and textile industries.

Despite important industrial gains in recent years, the area still has a deficit of 4,906 manufacturing jobs when measured against the national industrial employment-population ratio. This indicates an area where the potential for additional manufacturing production is excellent.

Resources For Growth

1. There is a current estimated labor supply of 3,600 men and 4,580 women available for industrial jobs in the labor market area. In addition, 7,680 young men and 7,355 young women will become 18 years of age by 1976 and potentially available for work.

2. The local transportation capability is good. Rail service is provided by the Illinois Central Railroad. Princeton is located on the Western Kentucky Parkway, which provides access to Kentucky's interstate and parkway systems. Commercial air service is available at Paducah, 48 miles away, and facilities for small aircraft are available at Princeton.

3. Energy - both gas and electricity - is available in large quantity. The raw water supply from Barkley Lake is adequate for continued growth.

4. Industrial sites - Princeton has two available industrial sites.

5. Education - There are four community colleges and one university within a 60-mile radius of Princeton.

Community Programs For Improvement

Recent community improvements: a new 66-unit low-rent housing project has been completed, several businesses have been remodeled, the 9-hole golf course has been extended to 18 holes, the library has been remodeled and conference rooms have been added.

Community improvements planned: a new \$1,500,000 high school with grades 10, 11, and 12 is being planned, and the sewerage main in the western section of Princeton is being extended.

Recreation, Entertainment, and Livability

Princeton has a country club with a swimming pool and an 18-hole golf course, a riding club, and a supervised recreation program for the children.

Recreational facilities in the Princeton area are plentiful. Within easy driving distance of Princeton are: Land Between the Lakes National Recreational Area; Kentucky Dam Village State Park; Lake Barkley State Park; Pennyrile Forest State Park; Kenlake State Park; and John James Audubon State Park.

There are two annual Thoroughbred racing meets at Henderson, 68 miles distant, and a full schedule of college athletics is available at Murray State University at Murray, and Western Kentucky University in Bowling Green.

THE LABOR MARKET

POPULATION TRENDS ^{1/}

Area	Population			Percent Change	
	1970	1960	1959	1960-70	1950-60
Princeton	6,110	5,618	5,388	+ 8.8	+ 4.3
Labor Market Area	139,773	146,121	137,282	- 4.3	+ 6.4
Caldwell County	12,603	13,073	13,199	- 3.6	- 1.0
Christian County	55,539	56,904	42,359	- 2.4	+34.3
Crittenden County	8,253	8,648	10,818	- 4.6	-20.1
Hopkins County	37,090	38,458	38,815	- 3.6	- 0.9
Lyon County	5,126	5,924	6,853	-13.5	-13.6
Trigg County	8,397	8,870	9,683	- 5.3	- 8.4
Webster County	12,765	14,244	15,555	-10.4	- 8.4

GENERAL EMPLOYMENT CHARACTERISTICS, 1969 ^{2/}

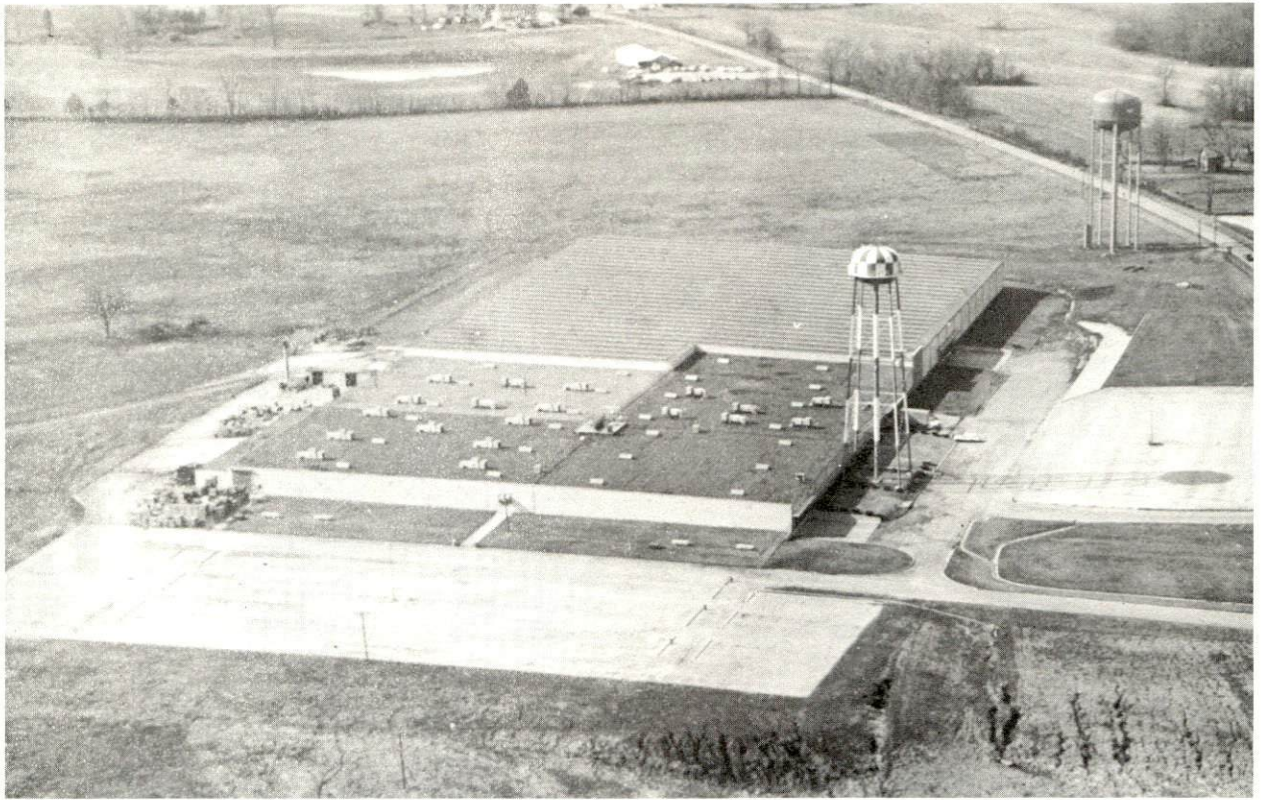
Major Employment Group	Employment	
	Caldwell County	Labor Market Area
TOTAL	5,800	48,400
Agricultural	800	5,900
Nonagricultural	5,000	42,500
Manufacturing	1,700	8,135
Trade and Services	1,106	10,934
Government	500	8,100

MANUFACTURING EMPLOYMENT TRENDS BY INDUSTRY
SEPTEMBER 1959 AND 1969 ^{3/}

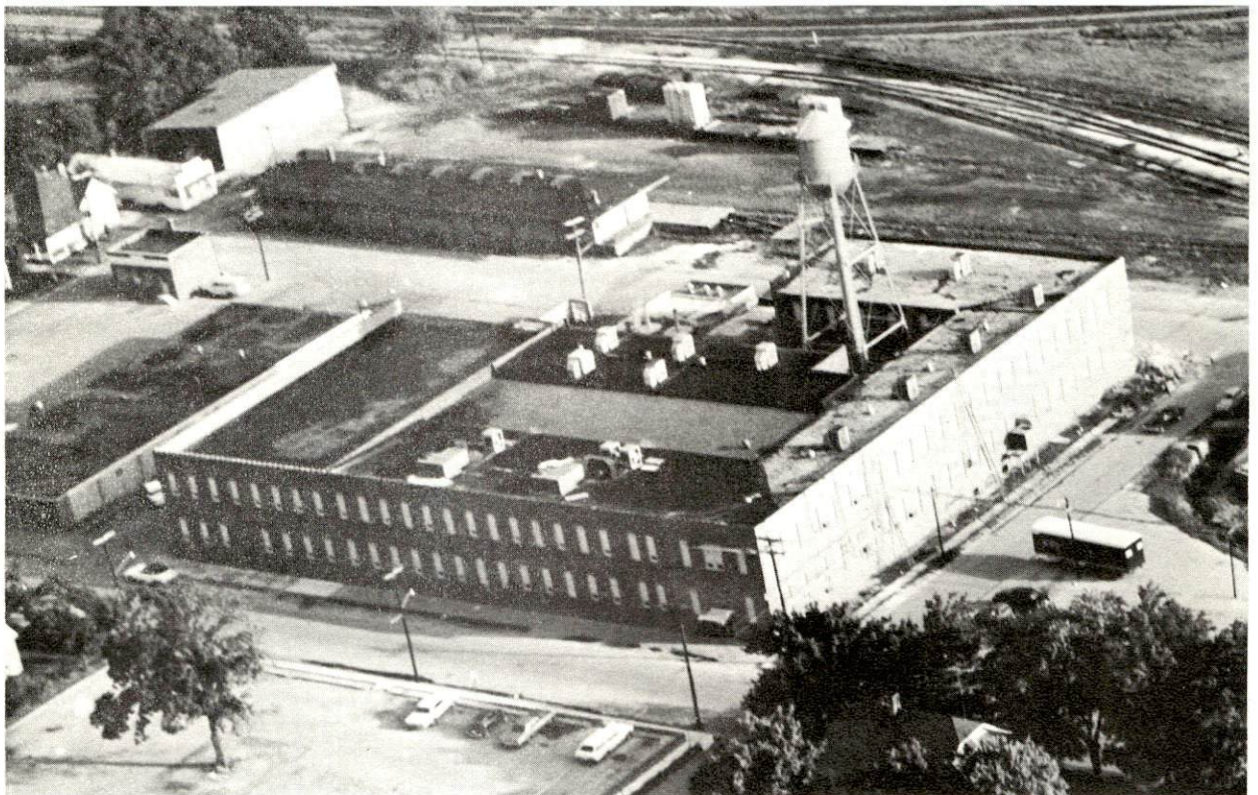
Industry	Caldwell County			Labor Market Area		
	1969	1959	%Change	1969	1959	%Change
TOTAL	2,236	663	+237.3	8,932	4,270	+ 109.2
Food & kindred products	13	51	- 74.5	396	518	- 23.6
Tobacco	0	0	-	14	22	- 36.4
Apparel, textiles, leather	436	511	- 14.7	2,591	1,770	+ 46.4
Lumber & furniture	75	77	- 2.6	385	594	- 33.2
Printing, publishing, paper	12	11	+ 9.1	507	448	+ 13.2
Chemicals, petroleum, coal, rubber	6	6	-	415	93	+ 346.2
Stone, clay & glass	0	7	-	82	121	- 32.2
Primary metals	0	0	-	519	19	+2631.4
Machinery & metal products	1,694	0	-	3,839	678	+ 466.2
Other	0	0	-	184	7	+2528.6

CALDWELL COUNTY MANUFACTURING FIRMS,
THEIR PRODUCTS AND EMPLOYMENT ^{4/}

Firm	Product	Employment		
		Total	Male	Female
<u>Princeton</u>				
O. Ames Co.	Parts for garden tools	15		
Arvin Industries	Radios, phonographs, TV's, electric scissors, hair dryers, radio components	1,100	200	900
Caldwell County Times, Inc.	Newspaper, commercial job printing	11	7	4
Cedar Bluff Stone Co.	Agricultural lime	42	40	2
Cumberland Mfg., Inc.	Misses' blouses, dungarees, misses' and ladies' shorts	65	11	54
Federal-Mogul Corp.	Powdered metals	80		
Grinnell Corp.	Steel welding fittings	272	252	20
Highway Asphalt Materials, Inc.	Asphalt paving materials	6	6	0
Kentucky Bi-Products	Ready mixed concrete	8	7	1
O. P. Link Handle Co., Inc.	Hickory blanks	8	8	0
Long Silo Co.	Concrete silo staves, feeding equipment	30	30	0
The Pine Lumber Co., Inc.	Lumber, crossties	9	9	0
Princeton Hosiery Mills	Children's hosiery	450	120	330
The Princeton Leader	Newspaper, job printing	2	1	1
Salyers Bros. Lumber Co.	Lumber, crossties	7	7	0
Tri-State Stave Co.	Barrel staves and headings	8	8	0
Williamson Drug Products	Pharmaceutical preparations	2	1	1
<u>Fredonia</u>				
T. R. Akridge & Son Co.	Fertilizer	4		



Arvin Industries



Princeton Hosiery Mills

WAGE RATES FOR SELECTED OCCUPATIONS
PRINCETON, KENTUCKY ^{5/}

Classification	Wages Per Hour		
	Starting	Maximum	Prevailing
<u>Production Employees</u>			
Assembler	\$1.65	\$2.05	\$1.79
Inspector	2.19	2.23	2.19
Production Laborer	1.89	1.89	1.89
Welder, Arc or Acetylene (Class-A)	1.89	2.23	1.89
<u>Service Employees</u>			
Electrician (Class-A)	\$2.00	\$5.50	\$5.50
Laborer	1.60	3.42	2.00
Machinist	2.50	3.50	2.50
Mechanic, Maintenance	2.50	3.00	2.50
Truck Driver, Industrial (Class-A)	1.60	2.00	1.60
<u>Office Employees</u>			
Bookkeeper	\$1.65	\$2.00	\$1.75
File Clerk	1.60	1.80	1.70
Receptionist	1.60	1.80	1.70
Secretary	1.87 1/2	2.15	1.87 1/2
Typist	1.60	1.80	1.65

LABOR ORGANIZATIONS

<u>Union</u>	<u>Representing Workers at:</u>
International Association of Machinist	Arvin Industries
Amalgamated Clothing Workers	Cumberland Manufacturing Company, Inc.
United Steel Workers	Grinnell Corporation
United Mine Workers, District 50	Princeton Hosiery Mills

CURRENT AND FUTURE LABOR SUPPLY -
CALDWELL COUNTY LABOR MARKET AREA

County	1970 Current Labor Supply ^{6/}			Future Labor Supply by 1976 ^{7/} (Becoming 18 Years of Age)		
	Total	Male	Female	Total	Male	Female
Labor Market Area	8,185	3,605	4,580	15,034	7,678	7,356
Caldwell	793	413	380	1,181	613	568
Christian	1,695	781	914	6,493	3,327	3,166
Crittenden	870	390	480	825	441	384
Hopkins	2,050	799	1,251	3,874	1,966	1,908
Lyon	731	420	311	426	223	203
Trigg	685	334	351	878	424	454
Webster	1,361	468	893	1,357	684	673

TOTAL PERSONAL INCOME ^{8/}

Area	1968	1959	% Change
Caldwell County	\$ 31,450,000	\$ 15,323,000	+105.2
Labor Market Area	435,023,000	205,425,000	+111.8
Kentucky	8,360,000,000	4,655,000,000	+ 79.6

PER CAPITA PERSONAL INCOME ^{9/}

Area	1968	1959	% Change
Caldwell County	\$2,434	\$1,251	+ 94.6
Labor Market Area	\$1,401 to 3,805	\$927 to 1,619	+51.1 to +135.0
Kentucky	2,645	1,552	+ 70.4

EDUCATION

Public Schools

	<u>Caldwell County</u>
Total Enrollment	2, 711
Elementary	1, 377
High School	1, 334
Student-Teacher Ratio	20-1
Elementary	20-1
High School	19-1
State Rating of High School	Standard
Percent High School Graduates to College	38. 1
Current Expenditures Per Pupil	\$420. 97
Bonded Indebtedness, June 30, 1970	\$380, 000

Parochial, Private and Special Schools

	<u>Parochial</u>
Total Enrollment	62
Elementary	62
Student-Teacher Ratio	15-1
Elementary	15-1

Vocational Schools

	<u>Nearest Area School</u>	<u>Nearest Extension Center</u>
Location	Madisonville	Hopkinsville
Miles Distant	30	29
Curriculum	Practical Nursing Surgical Technician Distributive Education Electronics (Industrial) Auto Body Repair Auto Mechanics Carpentry, Drafting Electricity, Machine Shop	Appliance Repair Auto Mechanics Carpentry Drafting Electricity Tool & Die Making

Colleges and Universities

<u>Name</u>	<u>Area - Within 60 miles</u>		<u>Highest Degree Conferred</u>
	<u>Location</u>	<u>Enrollment</u>	
Madisonville Community College	Madisonville	247	Associate
Hopkinsville Community College	Hopkinsville	451	Associate
Paducah Community College	Paducah	999	Associate
Murray State University	Murray	7,255	Masters
Henderson Community College	Henderson	720	Associate



Caldwell County Junior High



West Side Elementary School

TRANSPORTATION

Rail

Line serving - Illinois Central Railroad

Services - Siding, switching, freight, REA Express pickup and delivery

RAILWAY TRANSIT TIME FROM PRINCETON, KENTUCKY, TO: 10/

City	No. of Days		City	No. of Days	
	CL			CL	
Atlanta, Ga.	3		Los Angeles, Calif.	5	
Birmingham, Ala.	2		Louisville, Ky.	1	
Chicago, Ill.	2		Nashville, Tenn.	1	
Cincinnati, Ohio	2		New Orleans, La.	2	
Cleveland, Ohio	2		New York, N. Y.	4	
Detroit, Mich.	3		Pittsburgh, Pa.	3	
Knoxville, Tenn.	2		St. Louis, Mo.	2	

Truck Service

Company

Harper Truck Service, Inc.
 Ellis Trucking Co., Inc.
 McLean Trucking Company
 Schroder's Express, Inc.
 Tennessee Cartage Co., Inc.

Home Office

Paducah, Kentucky
 Indianapolis, Indiana
 Winston-Salem, North Carolina
 Cincinnati, Ohio
 Nashville, Tennessee

HIGHWAY MILES AND TRUCK TRANSIT TIME IN DAYS FROM
PRINCETON, KENTUCKY, TO SELECTED MARKET CENTERS

City	Highway Miles	Delivery Time $\frac{11}{/}$		City	Highway Miles	Delivery Time	
		LTL	TL			LTL	TL
Atlanta, Ga.	421	2	1	Los Angeles, Calif.	2,068	5	3
Birmingham, Ala.	307	2	1	Louisville, Ky.	167	1	1
Chicago, Ill.	453	2	1	Nashville, Tenn.	102	1	1
Cincinnati, Ohio	277	2	1	New Orleans, La.	638	3	2
Cleveland, Ohio	521	3	2	New York, N. Y.	936	5	3
Detroit, Mich.	542	2	1	Pittsburgh, Pa.	561	3	2
Knoxville, Tenn.	299	2	1	St. Louis, Mo.	227	2	1

Air

	<u>Local</u>	<u>Nearest Commercial</u>
	Princeton-Caldwell County Airport	Barkley Field
Location:	Princeton	Paducah, 48 miles
Runways:	1 paved	2 paved
Length:	3,000 feet	6,500 feet; 4,000 feet
Traffic Control:	Wind tee	Wind tee
Lighting:	None	Beacon, boundary, obstruction runway, and runway end lights
Services:		Delta, Ozark, Sun, and Desota Airlines; 80-100 octane; jet fuel; major A & E repairs; taxi; limousine; car rental; storage

Bus Kentucky Bus Line

Taxi Two companies provide 24-hour service.

POWER AND FUEL

Electricity

Company serving Princeton - Princeton Electric Plant Board

Source of power - Tennessee Valley Authority

Total generating capacity - 18,202,090 KW

Industrial rates negotiated by - South Kentucky Industrial Development Association, Hopkinsville, Kentucky

Company serving Caldwell County - (1) Pennyrile RECC, (2) Kentucky Utilities, (3) Henderson-Union RECC

Source of power - (1) Tennessee Valley Authority, (2) Kentucky Utilities, (3) Big Rivers RECC

Total generating capacity - (1) TVA - 18,202,090 KW, (2) KU - 773,000 KW, (3) Big Rivers RECC - 400,000 KW

Industrial rates negotiated by - Pennyrile RECC, Hopkinsville, Kentucky; Kentucky Utilities Company, Morganfield, Kentucky; Big Rivers RECC, Henderson, Kentucky

Natural Gas

Company serving - Western Kentucky Gas Company

Source of supply - Texas Gas Transmission Corporation

Size of transmission lines - 6-inch

Distribution lines - 6, 4, 3, and 2 inches

BTU content - 1,000

Specific gravity - .06

Distribution pressure - 60 psi

Rates:

Rates will be furnished by the Western Kentucky Gas Company, Madisonville Office.

WATER AND SEWERAGE

Water

Company serving Princeton - Princeton Municipal Water Works
 Source - Barkley Lake
 Treatment plant capacity - 2,000,000 gpd
 Average daily consumption - 650,000 gallons
 Peak daily consumption - 1,024,000 gallons
 Type treatment - filtration, sedimentation, coagulation
 Storage capacity - 900,000 gallons
 Average pressure - 62 psi
 Average temperature - 61 degrees
 Size mains - 4, 6, 8, 10, and 16 inches

MONTHLY WATER RATES FOR WHOLESALE AND INDUSTRIAL CONSUMERS

5/8-inch meter	150 cu. ft.	\$ 2.25
Next	100 cu. ft.	.65
3/4-inch meter	250 cu. ft.	2.90
Next	350 cu. ft. @65¢ per 100 cu. ft.	2.28
Next	150 cu. ft. @55¢ per 100 cu. ft.	.83
1-inch meter	750 cu. ft.	6.01
Next	350 cu. ft. @55¢ per 100 cu. ft.	1.92
1 1/4-inch meter	1,100 cu. ft.	7.93
Next	900 cu. ft. @45¢ per 100 cu. ft.	4.05
1 1/2-inch meter	2,000 cu. ft.	11.98
Next	1,100 cu. ft. @45¢ per 100 cu. ft.	4.95
Next	700 cu. ft. @40¢ per 100 cu. ft.	2.80
2-inch meter	3,800 cu. ft.	19.73
Next	3,600 cu. ft. @40¢ per 100 cu. ft.	14.40
3-inch meter	7,400 cu. ft.	34.13
Next	2,600 cu. ft. @40¢ per 100 cu. ft.	10.40
Next	9,450 cu. ft. @35¢ per 100 cu. ft.	33.07
4-inch meter	19,450 cu. ft.	77.60
All over	10,000 cu. ft. @35¢ per 100 cu. ft.	

Surface water sources - Tradewater River
Average discharge - about 315 cfs
Expected ground water yield - about 500 gpm in center of county,
grading outward to 5 to 50 gpm
Yield along main streams - 200 to 500 gpm

Sewerage

Company serving - Princeton Municipal Water Works
Design capacity - 1,000,000 gpd
Average daily flow - 498,000 gallons
Treatment - primary and secondary
Type treatment - aeration, drying beds, and trickling filters
Treated effluent discharged into - Eddy Creek
Size of sanitary mains - 6, 8, 10, 12, and 15 inches
Size of storm mains - 12 to 48 inches
Rates - 50 percent of water bill

LOCAL GOVERNMENT

City

Structure - Mayor - 4-year term; 6 councilmen - 2-year terms
Budget 1970 - General Fund \$270,000; Water and Sewer Fund \$160,573
Fees and licenses - All salaries, wages, commissions and net profits
of all businesses and professions are taxed one percent.

County

Structure - County Judge - 4-year term; 6 magistrates - 4-year terms
Budget 1969-70 - General Fund \$115,530; Road Fund \$39,300

Assessed Value of Property - 1969

<u>Classes of Property*</u>	<u>Princeton</u>	<u>Caldwell County</u>
Real Estate	\$18,946,184	\$49,817,720
Tangibles	9,135,268	26,499,260
Public Service	2,087,945	13,127,917

Local General Property Tax Rates Per \$100 of Assessed Valuation - 1969 ^{12/}

<u>Taxing Unit**</u>	<u>Princeton</u>	<u>Caldwell County</u>
State	\$.015	\$.015
County	.187	.187
School	.394	.394
City	.150	
Total	\$.746	\$.596

Planning and Zoning

Agency - Princeton Planning Commission
Plans completed - Comprehensive Plan, Zoning Ordinance
Plans in process - Subdivision Regulations

*Property assessed at 100% of fair value.

**Manufacturing machinery, raw materials inventories and goods in process inventories are not subject to local tax. State rate is only \$0.15 per \$100.

Safety

Police

Princeton

Caldwell County

Total staff	11	3
Radio-patrol cars	3	1

Fire

American Insurance Association Fire Rating	7	
Volunteers	17	17
Equipment:		
750 gpm pumpers	1	
500 gpm pumpers	2	1
utility trucks	1	1

(\$100 fee for county fires)

Rescue Service

Ever-Ready Radio Rescue Squad

Number of volunteers - 24

Equipment - ambulance, generator, short-wave radio, emergency van, boat and four power units

Personnel training - first aid

Sanitation

Princeton

Caldwell County

Type service	municipal	private
Cost:		
residential	\$1.25 per month	contract
business	\$15 average mo.	contract
Collection frequency:		
residential	twice weekly	when desired
business	when desired	when desired
Trash pickup	weekly	when desired
Disposal method	land fill	land fill

HEALTH

Hospitals

<u>General Hospital</u>	<u>Location</u>	<u>Beds</u>
Caldwell County War Memorial Hospital	Princeton	56

General hospital facilities - 2 operating rooms, clinical laboratory, emergency room, X-ray, obstetrical section, nursery, outpatient facilities

Medical staff - 6 doctors (full-time), 2 courtesy doctors, 7 consulting staff (doctors), 12 registered nurses, 18 graduate licensed practical nurses

Other - Princeton Mental Health Clinic

Nursing Homes

	<u>Number</u>	<u>Beds</u>
Extended care homes	1	27
Personal care homes	4	175

Public Health

Facility - Caldwell County Health Department

Staff - Registered nurse, administrative assistant, clerk

Budget 1969-70 - \$31,822

OTHER LOCAL FACILITIES

Communications

Telephone - South Central Bell Telephone Company
Services - standard

Telegraph - Western Union
Services - delivery and phone

Postal - U. S. Post Office
Class - First
Mail received - once daily
Mail dispatched - once daily

Newspapers -
Weekly and circulation - Caldwell County Times - 4,300; Princeton
Leader - 2,300
Other papers received from - Louisville, Paducah, and Hopkinsville,
Kentucky; Evansville, Indiana

Radio - WPKY
Stations received from - Paducah, Hopkinsville, Henderson, and
Central City, Kentucky; and Nashville and Clarksville, Tennessee

Television -
Reception from - Paducah and Bowling Green, Kentucky; Nashville,
Tennessee; Evansville, Indiana; Cape Girardeau, Missouri; and
Harrisburg, Illinois
Kentucky Educational Television - Madisonville - Channel 35

Library Services

Public Libraries - George Coon Memorial Library
Size collection - 25,802 volumes
Circulation, 1969 - 103,864
Services - story hour, films, pictures, microfilm strips, newspapers,
magazines, audio-visual equipment, phonograph records, conference
room, and art exhibits

Religious Institutions

Number of churches - 19
Denominations - Baptist, Catholic, Christian, Church of Christ,
Cumberland Presbyterian, Presbyterian U. S. A., Gospel Temple,
Holiness, and Methodist

Financial Institutions

<u>Bank</u>	<u>Statement as of June 30, 1970</u>	
	<u>Assets</u>	<u>Deposits</u>
Farmers Bank and Trust Co.	\$14,382,398.74	\$13,194,964.89
First Bank and Trust Co.	17,008,935.65	15,422,397.13
<u>Savings and Loan Associations</u>	<u>Assets</u>	<u>Shared Accounts</u>
Princeton Federal Savings & Loan Association	\$ 2,490,874.30	\$ 2,220,656.30

Hotels and Motels

Number - 2
Units - 29

Clubs and Organizations

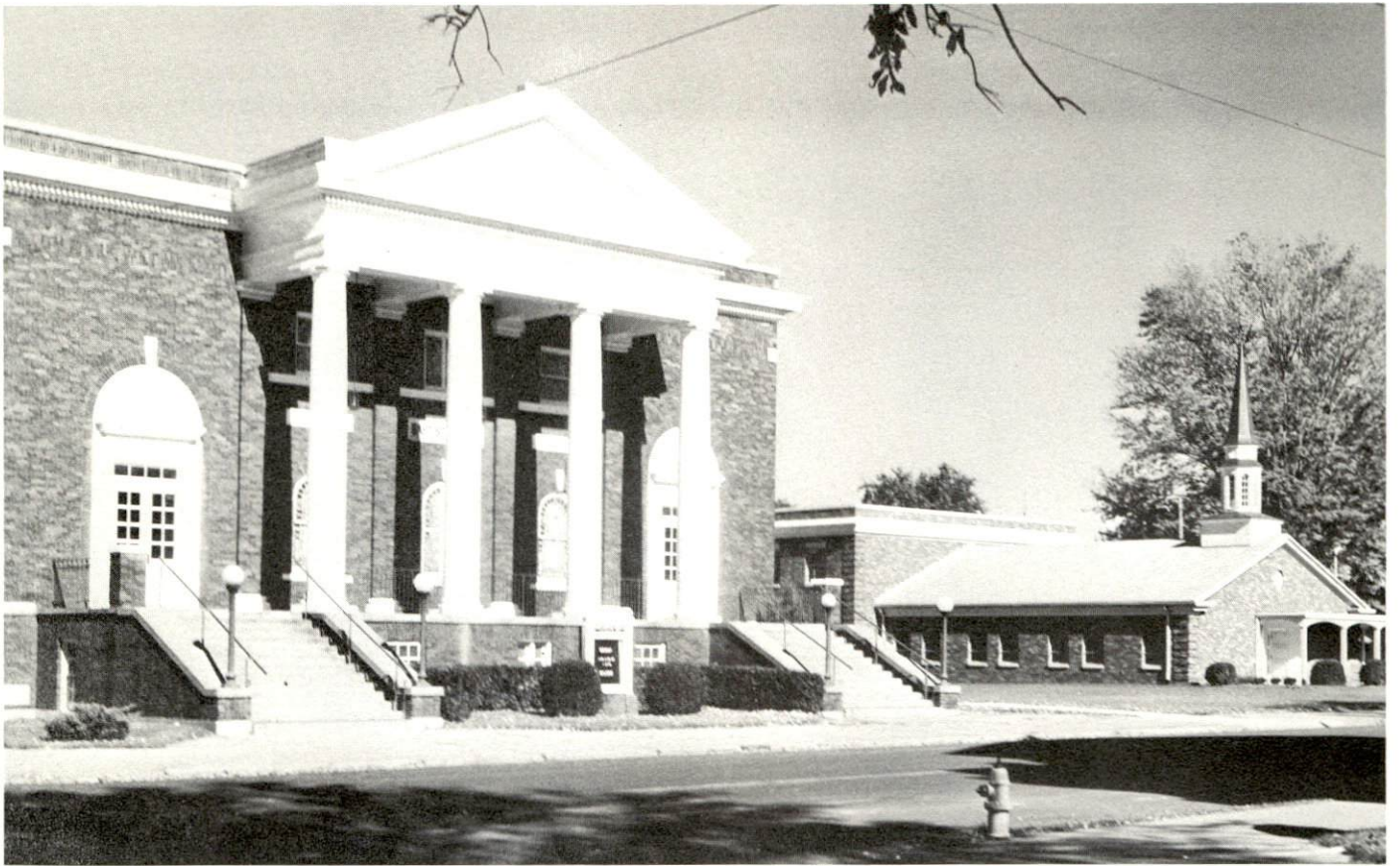
Business and Civic - Chamber of Commerce, Jaycees, Kiwanis, Lions, Rotary, Civitan, Ministerial Association, Red Cross, Farm Bureau, United Givers Fund

Fraternal - American Legion, Eagles, IOOF, Masons, VFW, and Elks

Women's - B and PW, Eastern Star, Garden Club, Rebekah Lodge, American Legion Auxiliary, Daughters of Confederacy, League of Women Voters, United Church Women

Youth - Boy Scouts, Girl Scouts, Cub Scouts, Brownies, FFA, FHA, 4-H, Beta Club, FBLA, Junior Achievement, Teen Club, National Honor Society

Other - Band Boosters, Book Lovers, Caldwell Flying Club, Riding Club, Sportsman Club



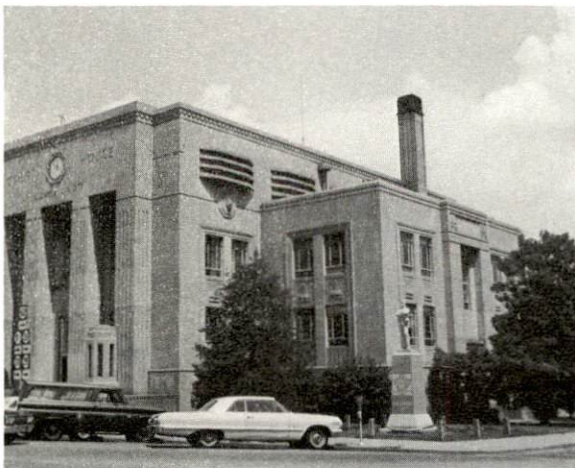
First Baptist Church



Caldwell County Times



First Bank & Trust Company



Caldwell County Courthouse



Farmers Bank & Trust Company
Branch Bank

RECREATION

Local

Public Recreation Facilities

Supervised program - Youth Incorporated

Park - 1

Playground - 1

Tennis courts - 2

Baseball diamonds - 3

Football field - 1

Other - basketball court

Private Recreation Facilities

Country club - 1

Golf course - 1

Swimming pool - 1

Movie theaters - 1 indoor, 1 outdoor

Tourist Attractions

Big Spring Park

Cultural Events

Community Concert Series

Area (Within 25 miles)

Kentucky Dam Village State Park

AGRICULTURE - NATURAL RESOURCES - CLIMATE

Agriculture 13/

	<u>Caldwell County</u>	<u>Labor Market Area</u>
Total land area (acres)	228, 480	1, 952, 640
Percent of area in farm land	68. 0	60. 9
Number of farms	944	6, 283
Average size of farms (acres)	164. 5	190. 7
1964 value of all farm products	\$ 4, 102, 083	\$34, 986, 020
Value per farm	4, 345	5, 568
Total crop sales	1, 450, 748	17, 505, 080
Total livestock & livestock products	2, 651, 334	17, 866, 968
1967 agricultural production included:		
Burley tobacco (lbs.)	884, 000	8, 714, 000
Corn (bu.)	862, 000	9, 747, 000
Cattle and calves (number)	32, 800	195, 900
Hogs and pigs (number)	18, 600	174, 000
Milk production (1966) (lbs.)	11, 990, 000	52, 802, 000

Natural Resources

Principal mineral resources	Limestone, coal, fluorspar
Other mineral resources	Clays and shales
Acres of commercial forest land	78, 900
Most abundant tree species	Red oaks, white oaks, hickories, yellow poplar, beech, hard maple, and ash

Climate 14/

	<u>Caldwell County</u>
Temperature	
Annual mean (30-year record)	60. 0 degrees
Average annual 1969	58. 6 degrees
Record highest (4-year record)	103 degrees
Record lowest (4-year record)	- 9 degrees
Seasonal heating degree-days (30-year record)	3, 578
Precipitation	
Mean annual total (30-year record)	45. 15 inches
Mean annual snow and sleet (28-year record)	11. 8 inches
Total precipitation 1969	42. 27 inches
Mean No. days precipitation (28-year record) (. 01 inch or more)	118
Average No. days thunderstorms (28-year record)	55
Prevailing wind (22-year record)	South

HISTORY

Caldwell County was formed in 1809 and named in honor of General John Caldwell. General Caldwell served under George Rogers Clark, was a member of the early conventions on statehood for Kentucky and was elected Lieutenant Governor of the Commonwealth in 1804.

The first settlers in Caldwell County were William Prince and Thomas Frazier who held land grants given by Virginia. Prince gave the land and founded Princeton which became the county seat, while Frazier established a settlement at Big Springs, a few hundred yards distant. Both of these places are now incorporated into the same town.

Simeon Norvell Leonard of Caldwell County discovered a smelting process to produce steel early in 1842. A few years later William Kelly in nearby Lyon County used the same method of blowing air across molten iron ore to make it hotter and eventually harden into steel. Sir Henry Bessemer of England patented the process in 1857 and it now bears his name.

Collins, writing in 1874, described the industries of Princeton as being "two wagon and plow shops, thirteen mechanics' shops, two steam flouring mills and a woolen shop."

John Mercer served seven consecutive terms in the State House of Representatives immediately after the formation of Caldwell County. His legislation kept the Tradewater River open for navigation by requiring every able-bodied man who lived within five miles of the river to give two days of work each year on it, as well as securing local ordinances by which Princeton was kept clean and attractive.

SOURCES OF INFORMATION

- 1/ U. S. Department of Commerce, Bureau of the Census, Census of Population, 1950, 1960, 1970 (Preliminary figures).
- 2/ Kentucky Department of Economic Security, Division of Research and Statistics.
- 3/ Kentucky Department of Economic Security, Number of Workers in Manufacturing Industries Covered by Kentucky Unemployment Insurance Law Classified by Industry and County, September 1959, September 1969.
- 4/ Kentucky Department of Commerce, 1970 Kentucky Directory of Manufacturers.
- 5/ Kentucky Department of Economic Security, Division of Employment Service, Hopkinsville Office.
- 6/ Kentucky Department of Economic Security, Kentucky Labor Supply Estimates by County, January 1970.
- 7/ Kentucky Department of Commerce, Future Labor Supply by 1976.
- 8/ University of Kentucky, Office of Development Services and Business Research, Total Personal Income For Kentucky.
- 9/ University of Kentucky, Office of Development Services and Business Research, Per Capita Income in Kentucky.
- 10/ Illinois Central Railroad, Louisville, Kentucky.
- 11/ Ellis Trucking Company, Indianapolis, Indiana.
- 12/ Kentucky Department of Revenue, Kentucky Property Tax Rates, 1969.
- 13/ U. S. Department of Commerce, Bureau of the Census, Census of Agriculture, 1964. U. S. Department of Agriculture and Kentucky Department of Agriculture, Kentucky Agricultural Statistics, 1968.
- 14/ U. S. Department of Commerce, Environmental Science Services Administration, Climatological Data, 1969.

All other information was obtained from governmental offices, local businesses and organizations.

This copy has been prepared by the Kentucky Department of Commerce,
Division of Research and Planning, and the cost of printing paid from
state funds.